

The Phoenix Grows ΑΣΦ



Alpha Sigma Phi welcomes a new Chapter and two colonies

Every December Alpha Sigs across the country gather to commemorate the action in 1845 by three young men at Yale that resulted in a unique Fraternity.

This past December was a particularly special time for the "Old Gal" as a new Chapter and two new colonies were welcomed to its ranks.

Delta Eta, East Carolina University, Greenville, N. C. is the new Chapter. The colonies are at Longwood College, Farmville, Virginia and Marshall University, Huntington, West Virginia.

Delta Eta was officially chartered on December 8. Extra tables and chairs were added several times as more parents, alumni, undergraduates and guests appeared to welcome the new Chapter.

Ben Ball, Wake Forest '75, transferred to East Carolina University and determined to start a Chapter of Alpha Sigma Phi. The Fraternity's Expansion Consultant and Chapter Consultants supported his efforts.

That the efforts resulted in a true brotherhood was apparent in the response by president Jay Morris when the charter was presented:

"You see a piece of paper. I see two years of hard work . . . of a handful of men talking with 50 prospects at parties. You see the names. I see faces . . . faces with special meaning and love. That piece of paper means more than practically anything that will happen in our lives."

It was a happy crowd that gathered. An entire busload of undergraduates journeyed

from nearby Gamma Lambda, Atlantic Christian College. Beta Mu, Wake Forest, sent an engraved silver bowl. Beta Zeta, N. C. State, provided the ritual team and gave the new Chapter special ritual equipment.

A delegation from the youngest Chapter, Delta Zeta, University of North Carolina at Charlotte, was on hand to pass on the traditional baby blanket, the Alpha Badge (a memento of Alpha Chapter that is passed from one new Chapter to another) and a special crystal plate.

Peter L. Tourtellot, American '57, Greensboro, N. C., Grand Councilor, presented the charter. Grand Marshal **Evin C. Varner, Presbyterian '58**, Washington, D. C., gave the main address on building bridges to brotherhood.

Alice Martin, ECU co-ed, presented a special Little Sister award to Doug Huggins and Jeff Betcher. Bob Miller of Delta Eta led a brass trio in music to mark the occasion.

Bill DeLoach served as master of ceremonies. Earlier he recognized Jeff Hoffman, Expansion Consultant and Rob Sheehan, Chapter Consultant. Hoffman presented the Frank Foli Hargear Award on behalf of the Bay Area Alumni Council to John Wesley Nobles of N. C. State. The award recognizes the undergraduate who has provided outstanding service to Alpha Sigma Phi beyond the boundaries of his own Chapter. With the award goes a cash stipend.

Representative from five other Greek organizations at ECU attended the banquet. There were brothers taking part in the event

from seven different Chapters of Alpha Sigma Phi.

Before the group moved the tables out and began a spirited dance party, new initiate Bob Miller summed up the occasion by saying: *"Thank Ben Ball for taking a few wet nosed college kids and turning them into a brotherhood of men."*

December 2nd saw a group of men gather for a special meal to note their official colonization at Longwood College, Farmville, Virginia.

Longwood, the birthplace of several national sororities, has only recently added men to its student body. Alpha Sigma Phi was invited to form a group there which was done under the direction of Expansion Consultant **Jeff Hoffman, N. C. State '76**.

(continued next page)

On the inside

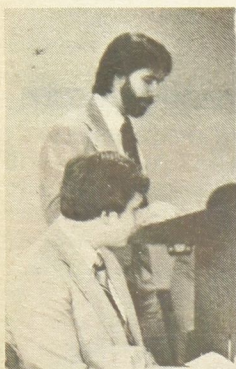
What's that special grin on the jack 'o lantern saying? To pay a visit to Wake Forest's Beta Mu Chapter which carved the pumpkin. **Page 3.**



Singing is coming back and a well-qualified brother suggests some ways to help it. **Page 7.**

They hardly ever sleep, they eat a lot of Big Mac's and they carry the message of brotherhood. A look at our Consultants. **Page 8.**

Chapters are having a great year. We asked them to tell you about it. The news starts on **Page 4.**



1-Rob Sheehan, Chapter Consultant, greets Longwood Colony. Jeff Hoffman, Expansion Consultant, is in foreground. 2-Part of Longwood colonization banquet crowd. 3-Longwood president Chuck Cole accepts colonization charter from Grand Marshal Evin Varner, left. 4-East Carolina University (ECU) Little Sister Alice Martin presents a surprise award to Jeff Betcher, left, and Doug Huggins. 5-ECU's Jay Morris displays the Alpha Badge, passed on by its most recent "owners", University of North Carolina at Charlotte. 6-Ben Ball, who planted seed for ECU Chapter, is flanked by Sheehan, left, and Hoffman. 7-ECU's Jay Morris accepting Charter on behalf of Delta Eta from Grand Council member Peter L. Tourtellot, right. 8-Wesley Nobles, N.C. State undergraduate, receives Hargear Award from Hoffman during ECU chartering. 9-Evin Varner, left, welcomes two new pledges at Longwood colonization. (No photos were available of Marshall colonization banquet.)



Charles Bruce (Chuck) Cole, president of the Colony, presided and impressed the group with his memory by introducing every member, date, parent and guest by name. Colony member Randy Cook gave the invocation and benediction.

Grand Marshal **Evin C. Varner, Presbyterian '58**, officially welcomed the colony and presented the group with its colonization certificate. Jeff Hoffman and Chapter Consultant Rob Sheehan presented individual certificates to the members. Dave Suchanic, faculty member and colony advisor, spoke on behalf of the Longwood administration. He commended the men of the colony for the high ideals they have demonstrated and the quality of their programming.

Alpha Delta Pi sorority was singled out for special thanks for its support, advice and encouragement. Guests included Tom Nanzig, Longwood's Director of Housing and Alpha Sig alumnus **Chuck Front, Westminster '75**, Richmond, Virginia.

Following the banquet, the group celebrated with a special reception and by pledging three more men!

Beta Delta Chapter, Marshall University, was chartered in 1929. The Chapter was closed a few years ago when it did not maintain the quality expected of an Alpha Sig Chapter despite concentrated support and work from the Headquarters staff. The Fraternity has remained in touch with the University, however, and following recent competitive presentations, was invited by the Marshall interfraternity council to return to the campus and form a new colony. The effort has been under the direction of Expansion Consultant **Jeff Hoffman**.

On December 6th, Beta Delta Colony was

officially recognized and welcomed by Alpha Sigma Phi. **Earl Stanley Fulks** presided at the special banquet.

Don Robertson, Coordinator, Student Activities and Organizations, Marshall University, welcomed the colony on behalf of the University. He commended the young group for its outstanding efforts in campus and community service projects. He praised the group's spirit and determination as well as the support from the Fraternity's headquarters.

Geoff Hall, Presbyterian '71, president of the Marshall Alumni Association, welcomed the group and announced a gift of \$400 for their treasury. He saluted **Don Blevins, Marshall '70**, and **Dick Barton Marshall '44**, for their special efforts in behalf of the colony. A particular thank you went to Mrs. Don Blevins for her support.

Kevin Garvey, Executive Director, officially recognized the group and presented the colony charter. Individual certificates were presented by Jeff Hoffman. Chapter Consultant **Rob Sheehan** who will now supervise the group was introduced.

Dave Lewis, president of Beta Delta Colony, accepted the charter. *"This brotherhood means a lot to me. Only a few weeks ago, we didn't know each other. Now we're a team. We're accomplishing things as a team . . . as a Fraternity."*

Special guest at the event was Clayton McNearney, faculty member, who had served as faculty advisor to the old Beta Delta Chapter.

The group adjourned to the student union for an informal party to celebrate its colonization.

December 1979. It'll go down in Alpha Sig history as a special time for the Phoenix to take flight.

THE TOMAHAWK

Vol. 78 No 3 (USPS 617-920)

Winter 1980

Member, College Fraternity Editors Association

Editorial Office

P.O. Box 4351

Charlotte, N. Carolina 28204

The **Tomahawk** is the oldest college fraternity publication. It first appeared in November 1847 at Yale College and continued until the college suspended it in 1852. Since its revival in April 1909, it has been published continuously.

Editor

Evin Varner

Editorial Assistant
Carol Hallenbeck

Circulation

Kathy Platt

Business Manager

Kevin Garvey

Alumni News
Tyler Cox

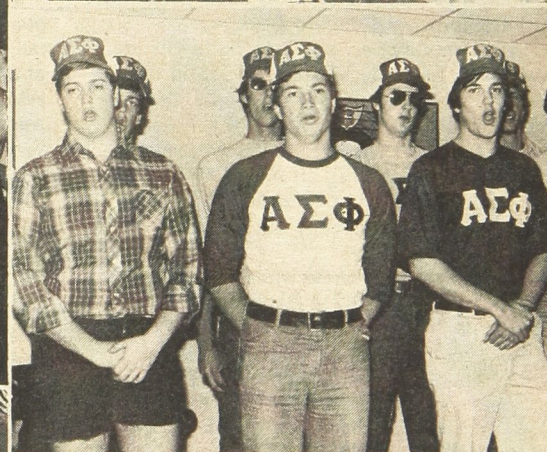
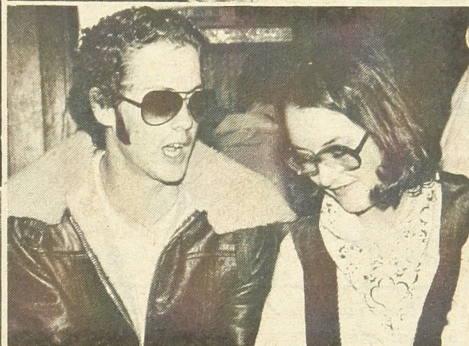
Art Director

Marty Washam

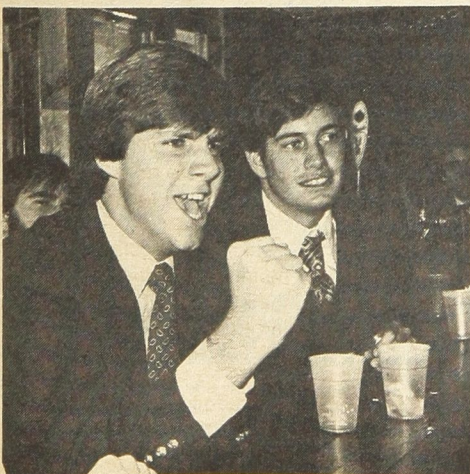
The **Tomahawk** is published quarterly by the Ellwood City Ledger, Ellwood City, Pa. U.S.A. for Alpha Sigma Phi Fraternity. Fifty cents a copy. Life subscription \$15.00. All remittances should be made payable to Alpha Sigma Phi Fraternity, 24 West William Street, Delaware, Ohio 43015. Second class postage paid at Delaware, Ohio, and at additional mailing offices.

Postmaster: Change of address form No. 3579 should be sent to Alpha Sigma Phi, 24 West William Street, Delaware, Ohio 43015.

Through the year with Beta Mu



Brotherhood, it starts with rush — telling someone you like that you'd like him to be your brother (1)... it's cheering on the intramural squad (2) and making game strategy (3)... it's pouring out to yell in the quad in a traditional greeting to a pledge class (4)... it's parties, like a 50's theme (5)... and the Little Sisters all dolled up for Christmas (6)... Brotherhood is fun and having costume parties (7)... it's the pledges learning Fraternity songs (8) and singing off-key... it's showing that Alpha Sig spirit (9)... and feeling it as part of a special group (10)... it's that once-in-a-lifetime moment of pinning a badge on your little brother. Brotherhood is Alpha Sigma Phi.



On campus—Chapters are putting the Phoenix into flight

Seems each year gets better for the Chapters of Alpha Sigma Phi. And so far, this school year hasn't been any exception.

Alpha Sigs are number one on many campuses all across the country. Here's just a sample of the many first places Chapters earned last fall:

Alpha Omicron, Missouri Valley College, took top honors in the homecoming decorations competition. **Beta Gamma** won first place in the Bethany College "Bits and Pieces" contest. **Psi**, at Oregon State University, took the largest pledge class on campus with 28 men. **Gamma Lambda**, Atlantic Christian College, also had the biggest pledge class on campus.

Last October, **Alpha Xi**, Illinois Institute of Technology, won the annual IFC sing competition. Later, it won the campus scholarship championship. Then, it nabbed first place in tennis, volleyball and racquetball.

Also in sports, **Beta Psi**, Rensselaer Polytechnic Institute, captured division championships in soccer, softball, ping pong and pool. And **Gamma Alpha**, Ohio Northern University, took first place in both flashball and volleyball for the third consecutive year.

Still more jocks are the men of **Delta Alpha**, Loyola University, who won the softball championship. In addition, **Delta** at Marietta College, won the IM handball tournament and **Gamma Phi** brothers were named number one in intramurals at **Concord College**.

In community service, **Beta Delta Colony**, Marshall University, won first place in the Red Cross blood drive. Incidentally, the men also had the highest grade point average on campus. **Delta Chapter**, Marietta, proved itself scholastically, earning an award for most improved grade point. And **Beta Epsilon** ranked first academically out of 34 fraternities at **Lehigh University**.

Yet another first came when **Purdue's Alpha Pi** won the Greek Olympics' annual tug-of-war for charity.

But even for those Chapters not placing first, it's still been a year of great accomplishments.

... A retreat, peanut nights and house remodeling ...

Gamma Zeta, Bowling Green University, reports a pledge class of 10 for fall quarter and an excellent homecoming celebration, thanks to great alumni cooperation. Earlier, the Chapter had a retreat directed by Larry Philippi and Executive Director Kevin Garvey. Coming up is a roller skating party with the Little Sisters and a Florida Fling raffle with Alpha Phi sorority. Also, the brothers plan to buy a foosball table and later participate in an assertiveness workshop.

At **Beta Omicron**, Tri State University, the men host peanut nights weekly. The peanuts are free. But they sell the beer and mixed drinks. Profits go toward social and rush functions.

After hosting the 1979 National Education

Conference, **Gamma Chi**, Indiana University, was busy with rush and theme parties. Brother Brian Jump was selected for membership on the Indiana Foundation Committee. And all the men are remodeling parts of the house.

Gamma Pi at Findlay College also has some new home improvements, including a new roof and several remodeled rooms—just in time for some fine rush functions that got the Chapter six pledges.

A beefed-up rush program for **Theta** has been the main thrust at the **University of Michigan** Chapter. With the help of Chapter Consultant Dave Beckel, the men expect to have the best rush in years. Other highlights include reaching Division A football playoffs, new paint in the kitchen and storeroom, and theme parties with Pi Beta Phi and Alpha Omicron Pi.

Like **Theta**, **Gamma Psi**, Lawrence Institute of Technology, now has Home Box Office with its TV. The men even sponsor movie nights. Other social events this year will include a barnyard party, a hayride and a treasure hunt.

... New furniture, a telethon, and special exam breaks ...

Eta Chapter, University of Illinois, pledged eight men and has been busy fixing up the house. Brothers say the new furniture is great.

Beta Delta Colony, Marshall University, proved its dedication to the community last fall. The men hosted a special Christmas party at a local hospital, and later took part in the WMUL Telethon for public broadcasting. A retreat and several social functions are in the year's forecast.

Beta Zeta, North Carolina State University, added six new brothers and is sure to get many more with its new rush tactic—sponsoring exam breaks in selected school dorms. Students get free drinks, snacks and conversation with the Beta Zeta men. Feedback has been great. And now, Alpha Sigma Phi is well-known on campus. Other good publicity came when Beta Zeta participated in the college's Great State Professor Race and the

IFC food drive. And last September, the Chapter held a very productive Province VII gathering to plan a conclave.

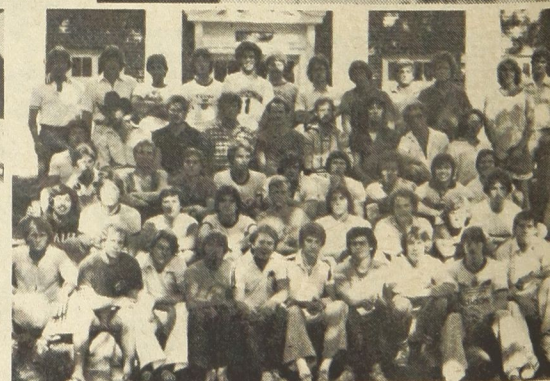
Homecoming was the milestone of the semester at **Beta Mu**, Wake Forest University. Over 90 couples returned for the festivities. Other high points came when a banner made by brothers and Little Sisters got national TV air-play during the Tangerine Bowl in Orlando. The social scene saw a "punk rock" party and the annual Beach Blast which drew record crowds. Alumni also set a record this year with their generous contributions.

... An anniversary, great homecoming and a Sig visit ...

Some major events are planned at **Beta Epsilon**, Lehigh University. Most important is its 50th anniversary celebration in April. All alumni are encouraged to attend. Also scheduled is a trip to Fort Lauderdale. Earlier this year, the undergraduates threw a much-appreciated Christmas party for 15 teenage runaways from the Valley Youth Center. A month later, the brothers took off for a terrific ski trip.

One of the largest turnouts ever from **Pennsylvania State University** alumni greeted **Upsilon's** homecoming this year. Other great accomplishments include placing seventh in over-all IM competition, taking sixth place with Phi Mu sorority in homecoming competition, and ranking eighth academically among all fraternities.

Highlights of the past semester at **Alpha Sigma**, Wagner, include a costume Christmas



Above, IIT—Three brothers at Black & White. All three are in Air Force ROTC and referred to around Alpha Xi as "block-heads," so the Chapter titled this shot "Block & White." Right top, DELTA BETA—What is Brother Steve Bernien doing lolling about there? He's part of Northern Michigan University's award-winning homecoming float. They didn't describe the theme, however. Right below, MU—Brothers at University of Washington gather in front of the Chapter house. And they gathered, and gathered and gathered...

Architectural barriers: Chapters and House Corporations should take a look at access for the handicapped, particularly if remodeling is planned. Ramps, curb cuts, special parking, widened doorways are important. The first floor, a bath and a bedroom should be accessible

to a person in a wheelchair. Any local society for the handicapped can offer suggestions. If you're the first on campus to do this, beat the publicity drums so others will follow suit.

party and a visit to a nearby nursing home—so well received, that the men were asked to drop in again. Five new brothers and four new Little Sisters were initiated. And the whole Chapter took a trip to Zeta Chapter at Ohio State. Still to come are the Songfest and the Campus Community Chest, a carnival for local charities. The Phoenix at Alpha Sigma is flying high!

This Christmas, **Psi, Oregon State University**, had the biggest tree on campus—30 feet tall. Other news—an excellent pledge class filled the house. Many brothers serve on campus committees. And during the cold wintry months, the Chapter chopped fire wood for retired senior citizens.

Last October, 16 men entered the Mystic Circle at **Tau, Stanford University**. Later, 200 alumni returned for the annual homecoming champagne brunch. Still successful is the traditional Thursday culture series, when brothers hear different speakers from the area. For social activities, the men have planned a raft trip, a wine-tasting party, and a tequila sunrise party.

... Fired up Greeks, a big rush and "show bid" ...

A second place homecoming float prize added \$60.00 to the budget at **Delta Beta, Northern Michigan University**. Also making homecoming unforgettable was the visit from many alumni and the Gamma Psi brothers. Northern Michigan's IFC recently named the Alpha Sigs the most "fired-up" Greeks on campus—for outstanding service, spirit and overall involvement.

Last semester, 12 new men joined the 35 brothers at **Gamma Phi, Concord College**.

Then, the Chapter co-sponsored a beautiful young lady in the homecoming queen contest with Sigma Sigma Sigma sorority. She placed second.

Rush keeps the men at **Phi, Iowa State University**, busy. But their hard work has paid off. The house is now packed with 58 brothers, the most since the late 60's. And Phi is poised for the next rush. This time to attract out-of-house brothers.

The main event coming up is "Varieties 1980", a classy talent show. Nine brothers will sing and play instruments to an arrangement of Beach Boy hits—complete with choreography and comedy touches. Last year, Phi's well-rehearsed act took top honors.

The most exciting news at **Alpha Xi, Illinois Institute of Technology**, is that Brother Ted Dahlstrom has received the Delta Beta Xi award. The Chapter is so proud! Last September's Black and White saw 40 alumni couples and 35 undergrads and dates having a fantastic time.

The men of **Delta Alpha, Loyola University**, want to thank alum Carl Moore for his efforts and generous contributions that went toward repairing the house's plumbing. More gratitude goes to housemother, Mrs. Sondergath, for her constant help to all the brothers. And congratulations to past HSP Steve Hillesheim, who has won the prestigious "Otis Award", joining very select company at Loyola.

... A sun deck, a new house, and a charity see-saw ...

At **Mu, University of Washington**, the year began with brothers and 29 pledges building a sun deck atop the house during a "work week." Next, came a successful homecoming

celebration with steak dinner for the alumni. Intramurals have kept the men in shape. And one brother, Gary Dohrn, might travel to Egypt to row on the Nile with the Washington Crew Team.

The annual Christmas dinner for family and friends was a huge hit. So will the upcoming Black Tie Talisman Rose formal. This fall, big brothers took little brothers to a professional hockey game. "That provided a great opportunity to get to know one another a little better," says Mu's HSC Robert Ratliffe.

A handsome, new two-story house has made the men at **Alpha Alpha, University of Oklahoma**, very happy. There's even a free washer and dryer inside. (The new house adds to Alpha Alpha's existing apartment complex.)

Alpha Chi at Coe College held the Alpha Sig Olympics for the entire Greek campus. Proceeds went to charity.

Beta Gamma, Bethany College, celebrated its 50th birthday. And at **Zeta, Ohio State**, the fall brought eight new pledges and six new Little Sisters. A Christmas dinner and several theme parties spotlighted Zeta's social calendar.

Delta Epsilon, Rio Grande College, is still admiring its **Stuart W. and Bruce R. Anderson Award** for best newsletter. Several service projects, including a 150-hour see-saw marathon for charity and parking cars at the Bob Evans Farm festival were special last semester. The Chapter has a new advisor, Brother Andrew Acus. At homecoming, the undergrads sold T-shirts that read, "I survived Homecoming 1979, I THINK!!!"

... A random party, new alumni interest and a new colony ...

Some outstanding parties were instrumental in the **Beta Psi, Rensselaer**, rush which netted 16 pledges last semester—brothers even prepared a special rush booklet, complete with a composite to help the freshmen recognize the Beta Psi men.

The Chapter threw a "Random Party," held on a random day for no particular reason. It was a smash! And the Little Sisters program got a renewed emphasis. Now, they'd like to share ideas with other Little Sister groups. Those interested can write the Chapter.

Other highlights—the basement has new hardwood walls. The Chapter hosted an open house for neighbors, making for good public relations. And Brother J. Alan Beard was elected IFC rush chairman.

Marietta's Delta Chapter annual Derby Day highlighted September. It drew a crowd of 12,000. Then in October, homecoming attracted alumni from as far away as Oklahoma. Coming up is the pledge formal and a fund-raising drive for the Cancer Society. Another massive fund-raiser is headed by alumnus C. Edward Stitt. Contributions will go toward refurbishing the Chapter's formal lounge.

Last September, a group of interested and enthusiastic men on the **Longwood College**

(continued next page)



Above left, LEHIGH—Sorority members from Centenary College are hosted by Beta Epsilon Chapter for its annual "Hotel-on-the-Hill" social. Above right, ALPHA NU—A special presentation was made by Pat Sheehan on behalf of the Chapter to Mrs. Norman E. Rose, center and daughter Nancy. Mrs. Rose and her daughter made a major gift to the Chapter in memory of Brother Norman E. Rose. Below left, Westminster Alpha Sigs played host to a group of Headstart children and had as much fun as the kids. (Brother Mark Bahr gives one a ride.) Center below, a group of brothers, alumni and friends share memories at the annual homecoming dinner. At Homecoming, far right, the Chapter recognized Brother Al Sternbergh, left, as "Distinguished Alumnus of 1979" in a presentation by then HSP Pat Sheehan, right.

Ballots are due from Chapters by April in the third annual **Sweetheart Competition**. Nominations were solicited from Chapters earlier in the year. Nominees are selected based on academic achievement, leadership, and campus service. Material sent to all

Chapters included photographs of the candidates and complete biographical information. The winner will be announced at the 1980 Alpha Sigma Phi National Convention.



...Phoenix into flight

campus banded together. By December 2, that bunch had become a Colony of Alpha Sigma Phi. And already, the men have participated in a can drive and have planned a canoe trip for the spring. They also sponsored Jane Bruce in the Miss Longwood pageant. Now, their sights are set on gaining their Charter by September.

If there's one thing **Gamma Alpha, Ohio Northern**, is good at, it's football. Thirty-four brothers played on the varsity football team—20 earned letters. The Chapter will host its annual Sig Olympics during Greek Week ceremonies. And with the help of alumni, the undergrads hope to refurbish the TV lounge. Also, there's hope of winning titles in IM wrestling, softball and track.

... New paint, a unique trophy and a "Mother Chapter" ...

A lot has happened at **Alpha Nu, Westminster College**. The Chapter house got new paint on the outside. Homecoming drew over 50 alumni. The dining room has a new floor. And there's new carpet in the Chapter room. All these home improvements were made possible by a \$1,000 gift from the bequest of Norman E. Rose and family.

A larger, more newsy, newsletter, designed to better serve alumni is in the works. A homecoming float featured the Phoenix. And the months ahead will mean hosting the Province VI Conclave and sponsoring the annual "Eat-a-thon for Epilepsy."

Beta Theta, Rutgers, says its biggest event last semester was the Rutgers-Princeton game at Princeton's Palmer Stadium. Keeping up an old all-fraternity tradition, the Alpha Sigs battled for a piece of the goalposts after the game. This year, the men got eight-feet, quite a day's catch, according to Beta Theta's Kevin Maney. That make-shift trophy goes in the Chapter's barroom. But in the kitchen, there's a new floor. In the bathroom, new paint. And in the pool room, new carpet.

Still to come is a Cancer Marathon—a weekend of fund-raising games, dances and parties. Also many brothers will flocked south to Fort Lauderdale during spring break.

The brothers at **Alpha Pi, Purdue**, serve as "Mother Chapter" for the men of the future colony at the University of Miami. Alpha Pi's past two pledges classes combined efforts and painted an impressive new sign for the front lawn. The Parent's Club donated a fire-place screen, grate and blower. And alumni are helping to remodel and expand the Chapter's library and guest facilities. The living room is getting a facelift too!

Brothers, pledges and Little Sisters went to the Bluebonnet Bowl in Houston, Texas to cheer on Brother Matt Bunchek, a Boilermaker team member. National TV gave time to the sheet sign the Sigs brought along.

For **Gamma Mu, University of Charleston**, the fall semester has been one of great change. A complete restructuring is underfoot, with

the help of Chapter Consultant Rob Sheehan. The Chapter's newsletter and the spring Black and White, both dormant for years, are coming back.

Reports from future **Gamma Theta Colony** at the **University of Miami**, say the Alpha Sigs are already making a good name for themselves. Eight men eagerly await colonization. Already, they placed quite respectably during Greek Week competition. And they continuously sponsor fund-raisers for Muscular Dystrophy. What's more, the men and their girl friends sold beer at football games, even at the Orange Bowl game itself.

... Washing for money, a bus trip and weight lifters ...

At **Delta Theta Colony, Radford**, the men hold car washes almost weekly just so they can raise the necessary chartering fee. All the money earned should help lower dues too. Biggest news from the Radford undergrads is that they've secured a room of their own from the school. Now a lot of work lies ahead to fix it up.

Alumni donated new kitchen equipment, including a stove and trash compacter for the men at **Beta Chi Chapter, American University**. Later, the undergraduates had a roaring disco-party—complete with DJ.

The men at **Delta Zeta, University of North Carolina at Charlotte**, are busy with rush.

August Convention reservations now accepted; sign up!

An Alpha Sigma Phi Convention is a special experience in brotherhood. **August 21-24, 1980** will be no exception as brothers from across the country gather at the Brown County Inn, Nashville, Indiana for the Fraternity's biennial Convention.

The site, an hour south of Indianapolis and an hour north of Louisville, Ky., offers a wide range of recreational activities plus the area's famed arts and crafts shops.

The Convention will feature the election of a new Grand Council and national officers, legislative sessions, awards banquets, educational workshops and reports on the operations of Alpha Sigma Phi. Special activities are planned for alumni and their families who include the Convention as part of their vacation plans. Special rates are available, but reservations must be made well in advance.

While official delegates of Chapters and chartered alumni groups are those who vote, all brothers—undergraduate and alumnus—are welcome at all sessions of the Convention.

Make plans now to take part in this special time of fun and Fraternity.

Invitations for an alumni reception drew a much bigger turnout than the men at **Alpha Psi, Presbyterian College**, had expected. The great response and a pledge class of 14 made last term spectacular for Alpha Psi. Better yet, the football team made NAIA finals.

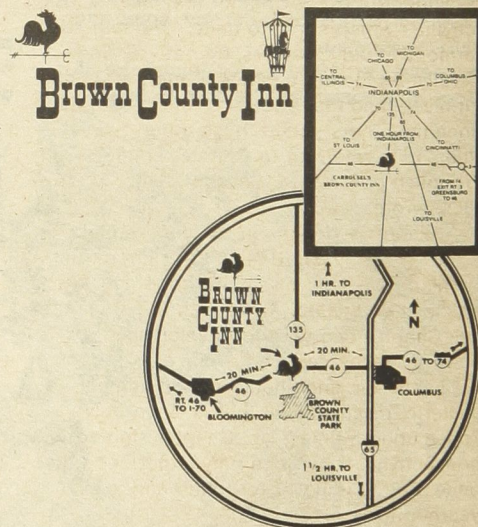
A very successful homecoming and a bus trip to Delta Eta's chartering banquet, spotlighted the semester at **Gamma Lambda, Atlantic Christian**.

Thanks to some handy workmanship, the **Gamma Delta, Davis & Elkins College**, party room now has a nifty walkup bar—perfect for a spring alumni event now in the making.

The house that **Delta Delta** moved into last year has gotten a major-workout. As have some of the undergrads. Seems the **Slippery Rock State College** brothers lift weights in the basement close to a picture of Brother Vincent Price, which reportedly inspires them to put all out.

Nu Chi Colony, East Carolina University, was chartered as Delta Eta Chapter on December 9, 1979. That was the big event of the semester. Other highlights included a superb fund-raiser fall term and a successful party with Alpha Omicron Pi sorority.

Finally, **Gamma Omicron, Tulane University**, reports some great rush functions down on Bourbon Street. And within the past few months, membership has doubled. The men have a special seating block at the Superdome. And Halloween brought a terrific party—and some outlandish costumes.



Alpha Sigma Phi Fraternity
24 West William Street
Delaware, Ohio 43015

☐ I would like more information about the 1980 Alpha Sigma Phi Convention. Tell me how my family and I can take part.

Name _____ Chapter _____

Address _____

City _____ State _____ Zip _____

Chapter singing: some how-to's on special harmony

Robert P. Swift, Hartwick '59, authored this special article on Chapter singing. This is the third time Brother Swift's by-line has appeared in *The Tomahawk*. He has done research into the history of Alpha Sig songs and would welcome information on that subject from any brother. Dr. Swift is now Chairman of the Music Department at Plymouth State College, Plymouth, New Hampshire. (Have a subject you'd like to write about? Your contributions are welcomed!)

During my undergraduate days at Hartwick, there were many opportunities for growth—not all in the classroom. Many were in Beta Xi Chapter which I joined at the conclusion of my freshman year.

One of the annual "growth opportunities" was the meeting in which we considered those to whom invitations to pledge should be given. It was growth for the Chapter but also for each of us as we tried to resolve differences of opinion.

There were always many on whom we would all agree. But others on whom there would be a division of sentiment, often with business majors, natural science majors, religion majors, arts majors and athletes pulling in different directions. And pulling hard. After all, the future was at stake. And it continues to be each year as every Chapter undergoes this continuing responsibility.

Every Chapter faces things that may tend to divide. But every Chapter may also work on activities which serve to unite. One can add harmony to our Chapters, figuratively and literally. As the more astute readers have now surmised (and that's 100% of this readership since the others joined those other "social clubs") I'm referring to Chapter singing.

English poet Walter Savage Landor (1775-1864) wrote:

There is delight in singing, though
none hear Beside the singer.

This is the type of singing to which this article is dedicated. Along with the steps that any Chapter can take to develop this powerful resource.

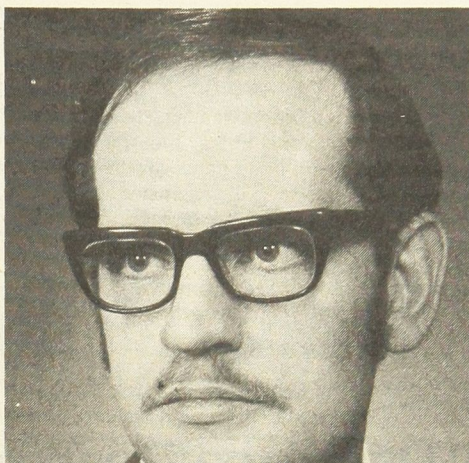
Chapter singing should not be some esoteric, mystical skill that is done only "once upon a time". No, Chapter singing is a now activity. It has been my experience that, once tried, it is never forgotten and is even yearned for.

"The whole is equal to the sum of its parts and greater than any one of them". That mathematical truth applies also to the experience of Fraternity singing and assumes new dimensions in definition. (I wish it were possible to play recordings of fraternity choruses to help emphasize this point.)

Stated simply, there are three ingredients for developing a singing Chapter:

1. A strong desire to sing as a Chapter.
2. Materials for singing.
3. A leader.

Of those three only the first is absolutely necessary.



Dr. Robert F. Swift

A strong desire to sing is a must, for where there's a will there's a way. All it takes to initiate Chapter singing is a genuine desire among the brothers to do so. Nor is a 100% level of participation necessary at first. Enthusiasm for singing, once generated, will continue to grow.

Three or four brothers are enough to get things started. Regular practice (i.e., routine singing) is also needed, if only for ten minutes or so after dinner three or four times a week.

As Landor said, the singing for one's own amusement (or amazement) may be adequate to begin with. However, a sure-fire technique for motivation is to establish some goal at the beginning, some "performance" toward which to work. This might be serenading a "Sweetheart of the Month" or singing to one of the sororities or caroling at a nursing home or hospital at Christmas. In each instance you are guaranteed an appreciative audience;

there is no chance for failure. Furthermore, you will receive far more from the experience than what you give.

Items two and three are extras. They can hasten the development but are not absolutely essential. By materials, I mean songbooks and musical instruments, guitars and/or piano (with players) being the most common. Note that singers with "good voices" is not a prerequisite; my more than 15 years of professional experience has confirmed that in most cases desire is the important factor, not ability.

National headquarters can provide copies of our fine songbook for a nominal fee. Often one or two brothers play instruments, or occasionally outsiders will volunteer their time and talents or provide them in trade for other services.

Many Chapters have music majors who would welcome the chance to develop their skills as instrumentalists or leaders. At Beta Xi Chapter, I was one of six or seven music majors and four of formed a barbershop quartet, the *A Sig Phi IV*, which performed throughout the central New York State region.

It may be possible to have a music faculty member or church choir director offer occasional assistance, especially in rather specialized areas as part-singing or correct singing techniques. In exchange for their help, the Chapter might support their programs by singing in their choirs.

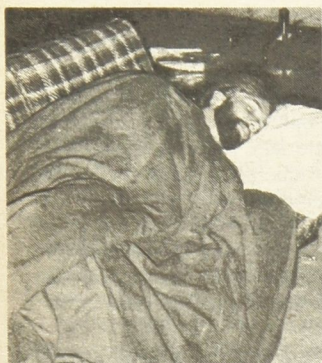
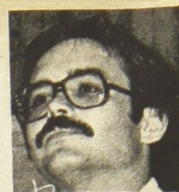
The Chapters of our great Fraternity offer a variety of experiences to each member—academic, social, even cultural. Fraternity singing has the potential for serving in all three areas. A sense of pride and camaraderie and spirit is fostered that cannot be duplicated in any other activity in quite the same way.

"Brothers, Sing On!"



Top, Beta Mu Brothers (Wake Forest) won the annual Greek Week Sing competition on campus during March 1979. Lead singers (L to R): Chip Clarke, Mike Garcia and Roy Smith. Bottom, pledges in the Spring, 1979, pledge class at Beta Mu chapter serenade the Brothers with new Alpha Sig songs they've learned.

Dennis "Skip" Parks, Baldwin-Wallace '72, Memphis, TN, was elected vice president of the Association of Fraternity Advisors at that group's recent national meeting. Parks is Advisor for Student Organizations and Greek Activities at Memphis State University. He was director of the 1979 National Educational Conference of Alpha Sigma Phi.



Life on the road — Rob Sheehan, far left, beds down for a few hours on a borrowed sofa. Center, Dave Beckel, left, and Sheehan compare notes during one of their rare meetings during the year. Right, Sheehan working with a colony officer at Radford University.

Alpha Sig Consultants: On the road for brotherhood

by Eric Jacobsen

Chapter Consultants. To some Chapters they're fearsome inspectors. To many alumni, they're unknown. To the Fraternity, they're vital in maintaining the flight of the Phoenix. Yet the Chapter Consultant role is greatly misunderstood.

Alpha Sigma Phi has had consultants on the road since 1947, when **Carroll Dilley, Ohio Wesleyan '42**, became the Fraternity's first "Field Secretary."

Some are well known within the Fraternity. Chapter Consultants **George E. Lord, Ohio Wesleyan '61**, and **Richard A. Dexter, Oregon State '60**, have gone on to become Grand Senior Presidents. **Gary Anderson, Westminster '71**, and **Kevin Garvey, Westminster '75**, became Executive Directors.

Other recent consultants have remained active in the Fraternity on the local, regional and national level. They include **Dennis "Skip" Parks, Baldwin-Wallace '72**, (75-76); **Frank W. Luman, Indiana '73**, (76-77); **Mike Boundy, Oregon State '74**, (77-78) and **Larry Philippi, Bowling Green '76**, (78-79).

All of those men would tell you that Chapter Consultants are vital to good Chapter operation . . . to bring new ideas, direction and a sense of national brotherhood. A consultant opens communications channels, has the objectivity to spot potential problem areas and the knowledge to offer workable solutions to those problems.

"The consultant serves as a helper, a teacher, a role model and a friend," says Philippi.

Rob Sheehan, Westminster '76, and **Dave Beckel, Ohio State '76**, are this year's two consultants. Foremost they must compare a Chapter or Colony's operations to the Fraternity's minimum standards as approved by the 1976 Convention. Then they must help the group reach, or hopefully, exceed those standards.

But as Sheehan says, "Most important of all, we visit a Chapter as a brother. Too often the men forget that."

"Unfortunately, many Chapters think we are spies for Headquarters," says Beckel.

"Chapters ask us, 'What did we do wrong?'"

That sort of misconception sometimes

causes undergraduates to clam up. And lack of communication means a wasted opportunity to learn new approaches and ideas.

Each summer, new consultants undergo a four-week training program. Seminars cover rush, pledge education, alumni relations, publications, campus relations, IFC interaction, Fraternity history and operations. But a consultant's training never stops. He's a constant learner and therefore a better teacher. At each Chapter he sees different methods and approaches that he can share with other Chapters. He also attends various national and regional interfraternity training conferences.

Beckel says the knowledge of different rush approaches is the best skill a consultant has. Not surprising, Chapters that request a visit frequently ask for a rush workshop. (And after such a workshop, membership almost always increases.)

Each year all Chapters receive at least one and generally two consultant visits. (This is one of the main ways that the Chapter's dues money sent to Headquarters comes directly back to them.) Since 1976, Alpha Sigma Phi has had on the road two consultants plus an expansion consultant, giving the Fraternity the best ratio of field staff to Chapters of any national fraternity.

An average consultation is three days. The consultant meets with Chapter officers, college administrators (usually the Greek advisor or dean of students) and with the entire Chapter. During a visit the consultant discusses and evaluates the Chapter's alumni relations, rituals, finances, administration, scholarship, sports and social programs.

The most valuable parts of the visit, says Sheehan, are the impromptu rap sessions with individual brothers. "That's when a lot gets accomplished," he adds.

Usually the final visit day is set aside for the consultant to present his observations and to offer viable solutions to any problems he may have spotted. At each Chapter, the consultant tries to leave at least one challenge, acceptable to the Chapter, for the men to work toward.

Within two weeks after a visit, recommen-

dation forms are sent to the Chapter, college administrators visited and the Chapter's advisors, identifying any specific problems the Chapter may have. Most follow-up reports, however, are filled with good comments and words of encouragement to become even better.

Hours after the consultant leaves one campus, he's on the doorstep of another Chapter at another campus. It's a demanding job. A lot of miles with few breaks. Sleeping on a lumpy sofa or grabbing a fast food burger due to tight budgets. Hours of paper work. Doing laundry in the middle of the night. No real social life. But there are rewards.

"When a brother treats me like a brother and shows he appreciates what I am doing, that's the best reward," says Sheehan. "Because I really try."

Perhaps the biggest rewards come when working with Colonies that become chartered or with weaker Chapters that become strong in membership. Delta Chapter, for example, saw its membership rise from 26 to 40 brothers with the help of a consultant and supportive alumni.

Another reward is the personal development each consultant gains during his time on the road. "The experience completely changed my life. I developed my leadership and social skills, and I increased myself confidence," says former consultant Philippi.

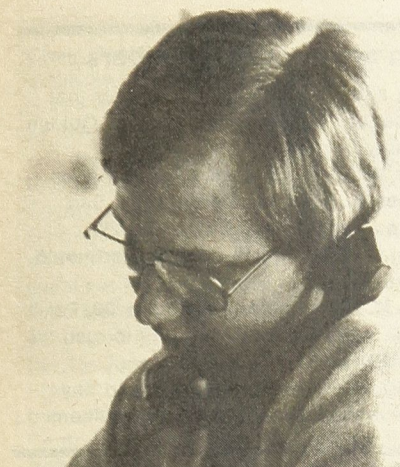
Executive Director Garvey emphasizes the important of field men: "They have been instrumental in reducing hazing. They've helped improve communications between Chapters and Headquarters. Best of all, they've helped the Chapters appreciate and make the most of the national organization."

"It's an interesting, important job," says Beckel.

Those who think they can fill that job are asked to get in touch with Executive Director Kevin Garvey. "Alpha Sigma Phi is making exciting strides. One reason is excellent consultants. We're always looking for outstanding brothers who can continue that tradition."

John B. Showerman, Northern Michigan '69, has been named by Grand Senior President Rick Dexter as the new Director of Alumni Affairs for Alpha Sigma Phi. He succeeds **Stan Miller, Purdue '64**, who recently joined the Grand Council. Showerman was the first president of Delta Beta Colony, now Delta Beta Chapter. He has

been active in the Chicago Area Alumni Council. A manufacturer's representative for Imperial Products, Inc., Showerman is based in Chicago but travels extensively on business. He and wife Ruthann and two-year-old son live in Deerfield, Illinois.



Jeff Hoffman

Expansion requires Consultant as well

Alpha Sigma Phi has another kind of Consultant—an Expansion Consultant. Creating new Chapters, reactivation of inactive Chapters and the guiding of those groups is his responsibility.

The program is currently headed by **Jeff Hoffman, N. C. State '76**. It's a new effort for the "Old Gal", not quite three years old. It has resulted in four new Chapters and a half dozen colonies, with more waiting in the wings.

Convention delegates have created a list of colleges and universities where they would like to see the Fraternity establish Chapters. The current focus for expansion is in the Southeast where college and university enrollments are

growing rather than decreasing as is the case in much of the country.

It's a long term effort. *"Calls and contacts made over two years ago are just now resulting in opportunities for Alpha Sigma Phi,"* comments Hoffman.

Hoffman is almost constantly on the road. He calls on administrators and interfraternity councils. He works with alumni. (Most university officials want assurance of alumni support for a new Chapter before they give permission for work to begin.) Presentations must often be made to undergraduate and faculty committees before the Fraternity is given permission to begin work on a campus. Calls are made on colleges where there is a moratorium on additional fraternities so Alpha Sigma Phi will have a chance when a new group is allowed to come on campus.

Expansion often begins at ground zero. Hoffman must walk onto a campus cold, where Alpha Sigma Phi is an unknown quantity. He must find and recruit outstanding young men. Often the men he contacts have little or no knowledge about fraternity life. It's a complex educational and selling job.

"We recruit members, organize the group, begin basic programming, pledge them and see that they are elevated to colony status," explains Hoffman. (Colony status means a group of 10 or more men working effectively toward achieving Alpha Sigma Phi minimum standards. *"After that, the group goes under the jurisdiction of a Chapter Consultant."*)

To achieve that means weeks on a campus. Information booths in student centers. Drop ins and informal socials. Mailings to students. Knocking on dorm doors. Working with sororities and other fraternities to find good

candidates. Long talks into the night, telling the Alpha Sig story.

It means leaving a small group holding meetings and doing its own recruiting and then returning a few weeks later to work further with them. It means guiding the group as it moves from being an informal "club" and becomes a brotherhood.

"Men in a colony have no role models to emulate. That's why the involvement of alumni is so vital," comments Hoffman. *"I'm proud that most colonies become model Chapters."*

As the group recruits members and learns about becoming part of Alpha Sigma Phi, it also must raise its \$600 chartering fee. (That fee pays for about half the cost of ritual equipment and other materials a new Chapter requires.)

Expansion is vital for the future of Alpha Sigma Phi. But there's more. *"A basic tenet of our Fraternity is sharing our brotherhood,"* says Hoffman. *"A Chapter does that through rush, asking others to be brothers. The Fraternity as a whole lives up to its commitment to share the brotherhood by starting new Chapters."*

Being on the road in expansion can be demanding. But Hoffman has found his two years rewarding: *"I've learned a great deal about myself and I've learned that the Fraternity and the Brotherhood we all share is extremely important and must never die."*

There's another reward of course. And that's evident in the proud papa expression Hoffman wears at every colonization banquet and chartering weekend. *"I wish I could share that wonderful feeling with every man in Alpha Sigma Phi."*

Alpha Sig has unique "historic" business career

by Tyler Cox

Within a stone's throw of the eighteenth-century Governor's Palace at Colonial Williamsburg, Va. lives an Alpha Sig alumnus who's "winding down" on his second of two national—international careers.

Donald J. Gonzales, Nebraska '39, has worked at the executive level of Colonial Williamsburg for the past 22 years—first as vice president for public affairs and more recently as senior vice president of the world-renowned foundation founded by John D. Rockefeller Jr.

"When the president is traveling, the buck stops here," he says. *"I have a couple of years to go and, based on my past experiences here, I know the administrative surprises will continue in the future just as they have popped up in the past 22 years and, I'm sure, just as they did 200 years ago."*

Don and his wife, Mary, also a Nebraskan, live in the pre-1746 Robert Carter House. As residents of the restored area, the Gonzaleses



Donald Gonzales

have hosted thousands of visitors, especially Alpha Sig alumni and students at the College of William and Mary.

"Mary is a true Alpha Sig," Don reports. *"She knew all the Brothers at XI Chapter as*

we dated all through the college years and before that. That makes our visits with the Fraternity people who come to Williamsburg all the more fun. Believe me, everyone gets here sooner or later!"

Before joining Colonial Williamsburg in 1958, Brother Gonzales was the diplomatic and White House correspondent for the United Press. In that career he traveled the world, interviewing Presidents Truman and Eisenhower and prime ministers and covering the Berlin blockade negotiation, East-West conferences, the Japanese peace treaty and the United Nations.

The only time outs for Don in his first career were a Neiman Fellowship at Harvard in 1949-50 and a brief career in the U.S. Army Air Corps as a pilot during World War II. He is a retired Colonel in the U.S. Air Force, but still flies a Cessna 172 Skyhawk "to get away from committees and the telephone."

Gonzales has served as a national board member of the Public Relations Society of America and is a past-president of the Virginia chapter. He also was the first chairman of the Virginia Arts Council and chaired a special Governor's Arts Award panel last year. Last summer, he and his wife received the Algernon S. Sullivan Award for service to William and Mary and its students.

"How can I replace my badge?" That was a frequent question on "Operation Information" forms coming back to Headquarters. Easy. Send your check for \$15.00 to Alpha Sigma Phi, 24 West William Street, Delaware, Ohio 43015, indicating your Chapter and initiation year. Badges are individually struck, so allow 6-8 weeks for delivery. Haven't sent in your "Operation Information" form? Do it now—Or ask Headquarters for another copy.



Ohio Northern: from surviving to thriving

by Eric Jacobson
Michigan '74

Three years ago, Gamma Alpha was just surviving. Today, the Ohio Northern Chapter is thriving.

Everybody has recognized the Chapter's turnaround for the good—the college, the community and the Headquarters staff.

"The entire campus now respects and admires a 'Sig'," says HSP Steve Barney.

But earning its new standing wasn't easy for Gamma Alpha. It took hard work, dedication and constant encouragement from Chapter Consultants.

A few years back, the Chapter had no scholarship program. No alumni relations program. No newsletter. Weak rush and pledge education programs. And virtually no involvement with either the campus IFC or the community.

Membership was good—47 brothers. But Kevin Garvey, then a visiting Chapter Consultant, realized Gamma Alpha was slowly becoming less a fraternity, and more a boarding house.

Fortunately, some undergraduates took concern. And by 1978, attitudes began to change. Brothers tried a new approach to rush. Groups of members met rushees in different rooms in the house and discussed various areas of Chapter operations. That new approach got 16 pledges. In addition, the Chapter beefed-up its pledge education program, putting an emphasis on pledges knowing the brothers. Also new was a newsletter for alumni.

But it's been within the past year that Gamma Alpha has made its biggest improvements.

"When a group of 50 guys extends themselves, the only way to go is up," says Barney.

Now, newsletters go out regularly. Several functions for alumni are planned throughout the year. A new scholarship program recently started, and the results have been excellent. Gamma Alpha has jumped from sixth, three years ago, to second this year in the all-fraternity GPA standing.

A special alumni directory is being published. The Chapter is scheduled to host the April Province V conclave. Various service projects are held each year for the campus and the community. Brothers are student senate and IFC officers. Some even helped choose the new Ohio Northern University president.

What's more, the Brothers recently captured the all-sports trophy for the fourth consecutive year. And all Chapter officers have assistants, learning the ropes before they take over.

Already this year, Ohio Northern has pledged 14 men. As in the past, the Chapter continues to heavily recruit football players for pledges—34 are on the Ohio Northern team now; 20 of them varsity letter winners.

But after taking the advice of Headquarters, HSP Barney says the Chapter is trying to broaden its rush program to attract even non-football players.

"Overall, this is a superior Chapter in all areas of operations," says Chapter Consultant Dave Beckel, who visited Gamma Alpha last December.

But that appraisal isn't good enough for Gamma Alpha. More improvements are planned, including increased communication with Headquarters. And with other Chapters. "We want to share our successes and failures with other Chapters to benefit the entire Alpha Sig society," says Barney.

Looking back, Barney explains, "I think the Brothers have a renewed sense of loyalty to the 'Old Gal'. We realized the need for change."

"The Brothers are proud of the fact they have improved the Chapter and their hard work only inspires harder work."

There are no secrets to Gamma Alpha's remarkable turnaround. It just takes a commitment to charge ahead and rejuvenate, improve or begin the programs, projects and approaches that make a Chapter its very best. Most of all, it takes Brotherhood—something very strong at Gamma Alpha!

Golden anniversary members

Here are additions and corrections for that special list of brothers receiving their Golden Anniversary Certificate:

Reidar Winther, Stanford '29, San Carlos, CA; **James A. Scatena, Stanford '29**, San Francisco; **Donald Bell, California '29**, Alameda, CA; **Richard E. Stoiber, Dartmouth '29**, Norwich, VT.

To **Dr. M. Allan Gilbert, Michigan '39**, Pal Coast, FL, our apologies for trying to rush the event by 10 years!

(Additional corrections on this and any other *Tomahawk* story are always welcomed.)

Operation Information returns were both helpful and interesting

by Jeff Hoffman

Doctors, lawyers and even an Indian chief. That's who make up the alumni of Alpha Sigma Phi. Over 300 brothers responded to the informal "Operation Information" which appeared in recent issues of *The Tomahawk*.

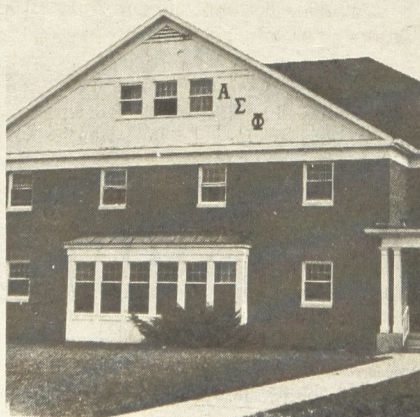
Most brothers said they would be willing to talk with undergraduates about their career fields—a valuable resource for our Career Development program. Others provided leads for expansion to new campuses, volunteered to serve the "Old Gal" on local, regional and national levels or expressed interest in establishing alumni councils in their areas.

Suggestions for improvement of alumni services, ideas for *The Tomahawk*, address updates on lost brothers and requests for addresses of other brothers were included on the questionnaires.

The survey provided a good look at a cross section of our alumni membership. Medicine, ecology, law, architecture, education, religion, business, politics, insurance, investments and advertising are a sampling of occupations represented by brothers. The survey showed that most alumni try to stay in contact with their Chapters and with members they knew as undergraduates. Most remain loyal to the high ideals of Alpha Sigma Phi and are involved in community charities and church work. Several indicated high interest in the Fraternity's hospitalization insurance plans. Opinions on discount purchase plans and travel packages were divided.

Alpha Sig alumni can be found in every state of the union, including (Eugene) **Pat Marquis, Oregon State '64**, who is a land surveyor in Anchor Point, Alaska, and **Arthur M. Bauckham, U.C.L.A. '26**, a retired businessman who has lived in Honolulu since 1931. Alumni can also be found in other countries. **John G. Townsend, Davis & Elkins '71**, is an Air Force navigator in Japan. **George W. Bowdey, Washington '34**, a retired Navy

(continued next page)



Left, each spring, Gamma Alpha hosts the Sig Olympics during Greek Week. The Tug-O-War competition is a guaranteed highlight. Right, on the outside, the Gamma Alpha Chapter house may look the same as it did three years ago. But on the inside, there are new curtains, carpet, freezer and waterheater.



T. Shirts: Tell the world you're an Alpha Sig. Three styles are available. Gray with red Alpha Sigma Phi—\$3.75. Gray with red and black "The Phoenix takes flight"—\$3.75. Or with the Greek letters, with raglan sleeve . . . red and white or blue and white—\$4.75. Large and extra large sizes available. Send your order with check to National Headquarters, Alpha Sigma Phi, 24 West William Street, Delaware, Ohio 43015.

captain resides in Scotland. And **John Bruce Craig, American '64**, is with the American embassy in Haiti.

The hobbies and interests of our alumni are as diverse as their locations. John Craig's embassy work has taken him to Saudi Arabia, Libya, Egypt and Haiti and his hobby is Egyptology. **Perry S. Smith, Loyola '74**, Chicago, IL, is a six miler and marathon runner and holds the undergraduate records for both events at his alma mater. **James N. Lewis, Ohio Northern '61**, Medina, Ohio, flies 727's for United Airlines and is the Ohio representative for Jungle Aviation and Radio Service, a branch of the Wycliff Bible Translators providing missionary work in South and Central America. Speaking of aviation, **Robert A. Dunbar, Cornell '50**, Columbus, OH, flies acrobatic airplanes for fun!

Thomas H. Miller, IIT '70, Glen Ellyn, IL, has the unusual hobby of fire fighting and prevention. And **Gary L. Helwig, IIT '67**, Arlington, VA, has begun a cottage industry making clocks.

Overall, "Operation Information" is being successful. The information provided will help the national headquarters staff design better services not only meet the needs of our alumni members but our undergraduate members as well. If you have filled out the questionnaire, but haven't mailed it please do so.

The information is invaluable to Alpha Sigma Phi, as the staff and Grand Council devise new ways to serve all members, for life.

Oh—for **Murriel Ray Ferrell, Concord '74**, Birch River, VA, who wanted to see his name in print. There it is. ■

Campaign '80 seeks Loyalty Fund support

Alpha Sigma Phi, like all fraternal groups, schools, and other institutions, cannot operate from fee income alone. That's why your annual contribution to the Loyalty Fund is so important. Fifteen dollars is the suggested annual alumni dues. All contributors are listed in the Honor Roll which will appear in the Summer issue of *The Tomahawk*.

Many alumni also make contributions to the Memorial Fund which underwrites scholarships and the educational work of the Fraternity . . . or to the Ralph F. Burns Fund, which honors Alpha Sigma Phi's remarkable Executive Secretary Emeritus. Both funds are tax-exempt.

All contributions should be sent to Alpha Sigma Phi, 24 West William Street, Delaware, Ohio 43015.

Be sure to enclose also some news and a photograph of yourself. And about any brothers you know as well.

Interest is growing in forming informal alumni groups in cities across the country. If you'd like to learn how to get a group of brothers together for fun and fellowship, just drop a note to the address above. ■

Alpha Sigs in action

Reports on activities and achievements of Alpha Sigma Phi across the country.

Alpha

Ward N. Madison, Yale '23, Madison, NH, is vice president of Madison's only church-parish and is a trustee of the Town & School Library.

Roger S. Sullivan, Yale '35, Scottsdale, AZ, is recovering from surgery.

For news of other alumni in Connecticut, see Delta, Epsilon, Beta Epsilon, Gamma Mu.

Gamma

Thomas E. Dodge, Massachusetts '66, Allison Park, PA, has been promoted to vice president of international sales for Medrad, Inc., a Pittsburgh-based medical equipment manufacturer.

Delta

Patrick H. Bowen, Marietta '59, Old Greenwich, CT, has been promoted to assistant general counsel for Kennebecott.

Glenver McConnell, Marietta '07, Tulsa, OK, soon will celebrate his 91st birthday.

Arnold P. Sutter, Marietta '67, Cincinnati, OH, is in his 9th year of teaching at Sycamore High School. He also is basketball coach.

For news of other alumni in Ohio, see Eta, Alpha Omicron.

Epsilon

James E. Humphreville, Ohio Wesleyan '49, Danbury, Ct, is coordinator of music in the Danbury Public Schools. He also conducts the Danbury Symphony Orchestra and the Community Chorus.

For news of other alumni in Ohio, see Eta, Alpha Omicron.

Eta

Sheldon D. Asher, Illinois '75, Chicago, IL, is midwest area nutrition and sales manager at MacGau Laboratories.

Christopher K. Beebe, Illinois '14, Glencoe, IL, has retired as chief chemist for the State of Illinois Division of Foods and Dairies.

Charles L. Bolster, Illinois '53, Los Altos, CA, now an area director of Syntex Laboratories.

Harry J. Bourn, Illinois '62, Lisle, IL, is a farm manager with Nortrust Farm Management Inc. of Chicago, a subsidiary of the Northern Trust Corp.

James W. Burks, Illinois '57, LaSalle, CO, is district superintendent of Weld County School District RE-1.

Lawrence J. Cobb, Illinois '73, Peoria, IL, works as an engineer with the Caterpillar Tractor Co.

Michael E. Cooper, Illinois '69, Minneapolis, MN, is an administrative analyst and assistant coordinator of the C.E.T.A. Training Program for the City of Minneapolis.

Wilbur L. Dooley, Illinois '31, Pekin, IL, is now retired.

H. Kenneth Foute, Illinois '40, Elmwood Park, IL, left the Drake Manufacturing Co. in 1975 to establish an American sales branch for W. Albrecht KG, a West German manufacturer of miniature electric lamps.

Raymond E. Glos, Illinois '25, Oxford, OH, now dean emeritus of the Miami University School of Business Administration.

Gordon D. Goranson, Illinois '66, Arlington Heights, IL, is assistant vice president of

LaSalle National Bank.

William D. Hall, Illinois '47, Batavia, IL, is a partner in Arthur Andersen and Co.

Donald L. Johnson, Illinois '31, Macomb, IL, retired in 1973 as a civil engineer with the Soil Conservation Service.

James E. Johnson, Illinois '55, Columbus, GA, has joined Sherman Industries of Birmingham, AL, as equipment resources manager.

Richard L. Joutas, Illinois '49, Northbrook, IL, is chairman of the board of Bradley Printing Co.

Jeffrey D. Kaiser, Illinois '72, Chicago, IL, has been an account executive for the Leo Burnett Co., major advertising agency, since 1976, first for the Green Giant Co. and now for the Kimberly Clark Corp.

Paul J. Kiedura, Illinois '76, Glenview, IL, is a stockbroker in downtown Chicago.

Phillip R. Lamkin, Illinois '78, Clinton, IL, is an attorney with Lamkin and Lamkin, P.C.

Joseph B. Lanterman, Illinois '36, Chicago, IL, has been employed by Armsed Industries Inc. since 1936. He has been a director since 1956.

Rossiter S. Llewellyn, Illinois '22, Santa Barbara, CA, is an advertising executive and chairman of Ross Llewellyn Inc.

David A. Lockwood, Illinois '74, Schaumburg, IL, is senior accountant for Boise Cascade.

Ronald L. Luken, Illinois '63, Naperville, IL, is administrative service manager for Arthur Andersen and Co.

R. Mark Mallory, Illinois '72, Orland Park, IL, now audit manager of Price Waterhouse and Co.

Dr. James R. Mason, Illinois '73, Indianapolis, IN, is a second-year resident in internal medicine in Indianapolis.

Roy W. Mayberry, Illinois '28, Dayton, OH, is a retired teacher and football coach at Fairview High School in Dayton.

Michael S. Meador, Illinois '79, Clarendon Hills, IL, is a partner in Meador Construction Co.

Charles R. Musser, Illinois '33, North Palm Beach, FL, now executive vice president and director of Wilson and Co. Inc.

Jerry C. Newell Jr., Illinois '76, Calumet City, IL, is a contractor and president of Newell Construction.

Jerry A. Nichols, Illinois '63, San Jose, CA, is an industrial designer and president of California Step Side Manufacturing Inc.

Dr. Carl E. Pruett, Illinois '43, McLean, Va, has retired as a U.S. Navy medical officer.

Raymond C. Raaf, Illinois '26, Northbrook, IL, is now retired.

James A. Roecker, Illinois '70, Morton, IL, is structural coordinator and an associate at Phillips Swager Associates Inc.

Albert J. Sanowskis, Illinois '76, Fort Pierce, FL, is a self-employed building contractor.

Dr. Joseph Sarmiento, Illinois '73, San Diego, (continued next page)

CA, has been transferred to San Diego as a resident in internal medicine with the U.S. Navy.

William L. Snyder, Illinois '74, Chicago, IL, is associated with Instrument Associates Inc.

Roger W. Spiegler, Illinois '49, Mount Prospect, IL, owns Spiegler's Department Store, Des Plaines, IL.

Richard M. Stock, Illinois '74, Chicago, IL, is assistant state's attorney for Cook County.

Richard B. Walker, Illinois '64, Albuquerque, NM, received the J.D. degree from the University of New Mexico School of Law in 1976.

Lawrence T. Witherspoon, Illinois '51, Houston, TX, is a financial analyst for Gulf Oil Corp.

John G. Yerington, Illinois '18, Benton Harbor, MI, is a self-employed contractor living in Phoenix in the winter and Michigan the rest of the year.

For news of other alumni in Illinois, see Pi, Phi, Alpha Chi, Alpha Iota, Alpha Pi.

Theta

Bruce Anderson, Michigan '64, San Francisco, CA, has been named a vice president of Levin Publishing Co., Inc. Anderson is editor of Levin's "Key Magazine" in San Francisco and launched similar publications for the firm in Reno and Lake Tahoe in addition to a Japanese edition of the San Francisco publication. Anderson, along with his uncle, **Stuart W. Anderson**, Dearborn, MI, **Eastern Michigan '73**, underwrite the national awards program for publications of the Fraternity.

Ray M. Hofelich, Michigan '27, Owensboro, KY, has retired from General Electric, but works part-time as assistant to the president of Brescia College.

Kenneth M. Nelson, Michigan '39, Milwaukee, WI, retired last year as a marketing manager for Cutler-Hammer and works now as a sales manager for the Johnson Brass Co. in Saukville.

Dr. Gail L. Shoup Jr., Michigan '47, Long Beach, CA, recently studied theatre forms for five months in India, Southeast Asia, China, Japan and Korea.

John K. Winters, Michigan '43, Northville, MI, is president of the Professional Engineers in Industry Practice Division of the Michigan Society of Professional Engineers.

For news of other alumni in Michigan, see Eta and Phi.

Iota

Francis J. Cramer, Cornell '26, Rochester, NY, is now retired.

Arthur E. Olsen, Cornell '62, Fairfax, VA, is serving a three-year assignment as assistant naval attache, Paris, France.

For news of other alumni in New York, see Psi, Gamma Rho, Gamma Chi.

Mu

Ramon L. Barnes, Washington '53, Puyallup, WA, serves as director of athletics and recreation for Puyallup School District. He also is director of the Board of Trustees of Fort Stellicoom Community College.

Paul R. Beeghly, Washington '62, Seattle, WA, is an actuary with Northern Life Insurance Co. in Seattle.

Frank N. Bell, Washington '22, Boise, ID, retired in 1973 as a U.S. District Court clerk and is now a trustee for U. S. District Bankruptcy Court.

Paul Brandson, Washington '75, Anchorage, AK, an accountant with Strand-Holeman and Co., recently took his C.P.A. exam.

John F. Clearman, Washington '56, Bellevue, WA, has been elected president of the Washington Society of Certified Public Accountants.

Lawrence H. Everett, Washington '70, Fall City, WA, left Abbey Medical after four years of custom wheelchair work to become station manager of Harbor Airlines and Pacific N.W. Commuter Airlines.

Thomas Ferguson, Washington '70, Everett, WA, is controller for Danard Custom Homes, Inc.

Daniel V. Franck, Washington '69, Seattle, WA, serves as vice president of Vic Franck's Boat Co. Inc.

Robert D. Hansen, Washington '67, Seattle, WA, now administrative assistant to the treasurer for Western International Hotels.

Ward M. Hartman, Washington '21, Sun City, CA, has traveled extensively in Europe and on the East Coast since his retirement in 1960.

Warde C. Hiberly, Washington '18, Salem, OR, is now retired.

Matt Howe, Washington '75, Anchorage, AK, associated with Strand-Holeman and Co., recently took his C.P.A. exam.

Ronald Jensen, Washington '55, Bainbridge Island, WA, president and chairman of the board of Pan-Alaska Fisheries Inc., is also vice president of Northwestern Production for Castle and Cooke Inc.

Everett H. Krippner, Washington '42, Dos Palos, CA, works as superintendent of schools for the Dos Palos School District. He retired in 1966 as a Lt. Col. in the Air Force Reserve.

Charles D. Lauber, Washington '45, Auburn, WA, is vice president, advertising and promotion, for the Palmer G. Lewis Co., a building supply distributor for the West Coast and Alaska.

Pat McNamara, Washington '69, San Diego, CA, graduated from law school in 1975, attended a seminary, and is now a deacon in a Roman Catholic parish near San Diego.

Gilmore O. Moen, Washington '36, Mount Vernon, WA, serves on the board of directors of Washington Federal Savings and Loan.

Steve Nute, Washington '64, Eugene, OR, is a health educator for Community Mental Health Consultants.

John Pearl, Washington '62, Walnut Creek, CA, now a general foreman for United States Steel Corp.

Phil Schwarz, Washington '44, Mercer Island, WA, has opened his own travel agency, "Travel Professionals."

Raymond D. Torbenson, Washington '31, Seattle, WA, is a lawyer with Torbenson, Thatcher, McGrath, Treadwill and Schoomaker.

Clark B. Williams, Washington '73, Menlo Park, CA, works as a judicial clerk in Portland's U.S. District Court while studying for the bar

exam. He is a graduate of Willamette Law School.

William E. Ziegler, Washington '38, Seattle, WA, retired after 32 years with Bethlehem Steel and now is West Coast sales representative for Lehigh Structural Steel Co.

For news of other alumni in Washington, see Psi.

Nu

J. E. Drew, California '16, San Francisco, CA, currently recovering from a fall.

R. R. Irwin, California '21, Glendale, CA, is a career counselor for professionals and executives.

Maitland B. McKenzie, California '22, president of the California Alpha Sigma Phi Association, has announced scholarships for study at UC-Berkeley for the following descendants of Nu Chapter members:

James C. Carrick, son of **Robert P. Carrick, Nu '54**; **Thomas E. Fraser**, grandson of **Dr. Harold E. Fraser, Nu '16**; **Rodger F. Hargear**, grandson of **Frank F. Hargear, Nu '16**; **William A. Hammerson**, son of **William P. Hammerson, Nu '42**.

Also **Hilary I. Holbrook**, daughter of **Richard E. Holbrook, Nu '47**; **Kenneth Needham**, grandson of **William S. Needham, Nu '26**; **Janet Perham**, daughter of **George S. Perham, Nu '50**; **James D. Raphael**, grandson of **Miles F. York, Nu '19** and **Dr. James C. Raphael, Nu 18** (both Omega); and **Richard M. Stanaro**, son of **Chester J. Stanaro, Nu '47**.

For news of other alumni in California, see Eta, Mu, Pi, Psi, Theta, Alpha Pi, Beta Gamma, Alpha Omicron, Alpha Tau, Beta Sigma.

Omicron

W. Raymond Brown, Pennsylvania '30, Lantana, FL, owned and operated Manor Park Apartments until 1977 and is now retired.

For news of other alumni in Pennsylvania, see: Gamma, Alpha Pi, Alpha Tau, Beta Chi, Gamma Epsilon, Gamma Tau.

Pi

John Harry, Colorado '19, Sun City, AZ, reports that an informal group of Alpha Sigma alumni in the Sun City area met in November for their autumn luncheon. They include **Frank Cowgill Stanford '17**, **James Hurley, Washington '26**, **Perley Lewis, Colorado '19**, **Charley Lewis, Colorado '21**, **George Morgan, IIT '30**, **Oscar Robertson, Colorado '18**, and **Tom Thompson, Minnesota '30**. A spring luncheon also has been planned.

For news of other alumni in Colorado, see Eta, Psi.

Phi

Dr. William J. Anderson, Iowa State '55, Ann Arbor, MI, is professor of aerospace engineering and chairman of the Computer-Aided Design Engineering Program at the University of Michigan.

Michael J. Fischer, Iowa State '76, Onalaska, WI, now a marketing representative with the Armstrong Cork Co.

Patrick M. Mino, Iowa State '69, Mazon, IL, works as general manager of Mazon Farmers Elevator Co.

William J. Worth, Iowa State '34, Elm Grove, WI, has retired from Allis Chalmers after 43 years as a design engineer.

For news of other alumni in Iowa, see Alpha Pi.

Salutes to Sigs:

The Tomahawk has joined with Chapters in saluting alumni who have given them support or of whom they're particularly proud. Here are some current salutes:

Illinois: **Gordon D. Goranson, Illinois '66**, Arlington Heights, IL, saluted for his three years of service as Alumni Council Chairman, pulling Eta through a difficult financial period. (Saluted by **John C. Fregean, Illinois '67**, of Chicago.)

Marshall: **W. Page Pitt, Marshall '32**, Stuart, Florida, retired journalism professor, honored by Marshall University for his 45 years of service by naming the school's journalism department after Brother Pitt. Brother Pitt's son, **Bill Pitt, Marshall '46**, is also an alumnus of Beta Delta Chapter but is listed, unfortunately, as a "lost" brother—we have no current address.

Purdue: **Eric Neal Allen, Purdue '71**, Greenfield, Indiana, for his past legal advice on behalf of Alpha Pi Chapter and his recent appointment as a full partner in Ging, Free, Brand, Tosick & Van Winkle Attorneys.

Psi

Eric Anderson, Oregon State '67, Lone, OR, owns 3,000 acres of wheat and 1,500 acres of irrigated land near Boardman. His "Earth Carpet" instant lawn business has expanded to 500 acres, with offices in Portland and Pasco, WA.

Robert L. Brock, Oregon State '47, Seattle, WA, now vice president and general manager of the Army Systems Division of Boeing Aerospace Co.

William A. Campbell, Oregon State '69, Anchorage, AK, is president and owner of Curtis & Campbell Wallcoverings North.

Charles N. Cole, Oregon State '63, APO New York, NY, left Texaco's refinery in Anacortes, WA, to work for three years as a master planner (civilian employee) for the U.S. Army in Germany.

Mark J. Fahey, Oregon State '75, Lake Oswego, OR, is a staff accountant with Arthur Young & Co.

Daniel L. Fricke, Oregon State '73, Riverside, CA, works as a planner in population research for Riverside County Planning Dept.

George W. Hagan, Oregon State '51, San Mateo, CA, left his responsibilities with the American Heart Association to become executive director of the Northern California Arthritis Foundation.

Jerome Hahn, Oregon State '62, Redding, CA, is sales manager of Hyampom Lumber Co.

Curtis L. Harlow, Oregon State '76, Portland, OR, now a first-year medical student at the University of Oregon Health Sciences Center.

Lloyd T. Hunt, Oregon State '69, Flushing, NY, flies as a pilot for American Airlines.

Armel L. Johnson, Oregon State '46, Seattle, WA, works at the Port of Seattle.

James D. Kennedy, Oregon State '68, Anchorage, AK, is self-employed in the construction business.

Robert J. Kipper, Oregon State '76, Salt Lake

City, UT, works in the Dairy Division of Safeway Co. Inc., Salt Lake City Quality Control.

Kevin A. Nichols, Oregon State '73, Denver, CO, received an M.A. in Traffic and Transportation Engineering in 1977 and works as a transportation engineer for Centennial Engineering in Denver.

Douglas F. Robbins, Oregon State '71, Covina, CA, is head golf professional at South Hills Country Club.

Dr. George C. Selfridge, Oregon State '26, Boulder City, CO, is retired following a career as a geologist, college professor, exploration engineer and member of the Manhattan (atomic bomb) project. He left the U.S. Department of the Interior's Office of Mineral Exploration in 1966.

Steven A. Stewart, Oregon State '66, Portland, OR, has left his responsibilities at Citizen's Bank in Eugene to earn a M.A. degree at Multnamah School of the Bible.

Kip R. Veit, Oregon State '69, Portland, OR, owns and operates "Drafrite," a business which cleans, maintains and repairs draft beer equipment.

J. Waune Watson, Oregon State '61, Phoenix, AZ, is a real estate broker and has been vice president of Biltmore Properties, Inc. for two years.

For news of other alumni in Oregon, see Mu.

Alpha Zeta

Phillip F. Johnson, UCLA '30, Woodland Hills, CA, reports that the inactive Alpha Zeta chapter is keeping its name alive by sponsoring a \$1000 UCLA Alumni Scholarship, which provides recognition.

William R. Leonard, UCLA '34, Coronado, CA, is now retired.

C. Mark Reed, UCLA '66, Hickory, NC, works in the Greensboro, NC office of Eastern Airlines Inc. and serves on the board of advisors of the Newsletter Association of Alpha Sigma Phi.

Robert L. Trammell, UCLA '70, Ontario, Canada, is a systems programmer for the Berte Control Systems Division of Parker Hannifin Corp.

For news of other alumni in California, see Eta, Mu, Pi, Psi, Theta, Alpha Pi, Beta Gamma, Alpha Omicron, Alpha Tau, Beta Sigma.

Alpha Iota

Henry J. Forssberg Jr., Alabama '59, Hackensack, NJ, is chairman of Hank Forssberg Advertising.

Marks V. Garland, Alabama '66, Woodbridge, VA, a flight officer on Boeing 727's with Eastern Airlines in Washington, DC, also flies the A-10A "Thunderbolt II" as a pilot in the 175th Tactical Fighter Group of the Maryland Air National Guard.

Ronald W. Reinghaus, Alabama '60, Maitland, IL, has received a Ph.D. in higher education.

For news of other alumni in New Jersey, see Alpha Psi, Iota.

Alpha Nu

William K. Brayer, Westminster '72, Cherry Point, NC, practices dentistry as a commissioned officer at the U.S. Marine base in Cherry Point. While in dental school, he received a three-year Navy scholarship.

Stephen R. Gittings, Westminster '77, Miami, FL, works with the Agricultural Research Service of the U.S. Department of Agriculture's Science and Education Administration.

Mark R. Huber, Westminster '76, Athens, GA, is studying journalism/public relations in graduate school at the University of Georgia.

Thomas L. McCullough Westminster '75, Grapevine, TX, has been promoted to production manager of microbiological instruments in the Diagnostics Division of Abbott Laboratories in Dallas.

For news of other alur i in Pennsylvania, see: Gamma, Alpha Pi, Alpha Tau, Beta Chi, Gamma Epsilon, Gamma Tau.

Alpha Xi

Chedo P. Graham, Illinois Tech '39, Longwood, FL, travels and does part-time management consulting in his retirement.

For news of other alumni in Illinois, see Pi, Phi, Alpha Chi, Alpha Iota, Alpha Pi.

Alpha Omicron

Ken Edwards, Missouri Valley '71, Marshall MO, has been selected chairman of the Missouri Division of the "Great American Smokeout" for the Chillicothe, MO chapter of the American Cancer Society.

The Rev. Bill Lawrence, Missouri Valley '65, Martins Ferry, OH, now the new pastor of First United Presbyterian Church of Martins Ferry. He had been pastor of First United Presbyterian Church, Turtle Creek, PA for eight years.

George W. Morrow Jr., Missouri Valley '64, Kirkwood, MO, is a supervisory auditor for the U.S. Treasury Department, Internal Revenue Service.

Louis E. Surleo, Missouri Valley '54, Littleton, CA, works as a supervisor in the Mail Processing Division of the U.S. Postal Service in Denver, CO.

Patrick A. Walter, Missouri Valley '72, Plainfield, IN, received an M.A. in computer science from the University of Missouri at Rolla and now works for Texas Instruments in Houston. He formerly taught high school in Melbourne, Australia, traveled in Asia and Europe and taught junior high in Poplar Bluff, MO.

Alpha Pi

David W. Clarke, Purdue '68, Fremont, CA, has been promoted to manager of distribution analysis with Shaklee Corp. in Oakland.

Robert T. Frapwell, Purdue '72, Norcross, GA, is center manager for data processing operations at Automatic Data Processing Inc. in Atlanta.

Gary P. Rietz, Purdue '75, Chicago, IL, now associated with Arthur Anderson & Co. of Chicago.

Charles V. Schmidt, Purdue '66, Indianapolis, IN, is director of Alumni Activities at Marian College in Indianapolis. Recently he purchased the oldest and smallest daily newspaper published in Indianapolis, The Indianapolis Commercial.

William A. Super, Purdue '73, Dubuque, IA, is senior engineering analyst at John Deere in Dubuque.

Gerald G. Wilson, Purdue '66, El Toro, CA, is a partner in the law firm of Lazof and Swanson.

(continued next page)



Skip Bryan, Tri State '63

For news of other alumni in Indiana, see Eta, Alpha Omicron.

Alpha Tau

Louis P. DeChiaro, Stevens '68, Whitehall, PA, received a Ph.D. in solid-state physics last year and works now at Belee Laboratories in Allentown, PA.

John R. Earl, Stevens '76, Manhattan Beach, CA, is a design engineer with Chevron, USA in El Segundo, CA.

Carl E. Kleiber, Stevens '26, Flanders, NJ, reports that he is still active at age 79.

Arthur N. Kugler, Stevens '26, Bricktown, NJ, has been listed again in Who's Who in America and Who's Who in the World.

For news of other alumni in New Jersey, see Alpha Psi, Iota.

Alpha Chi

Michael A. Crane, Coe '70, Chicago, IL, has left the Felony Trial Division of the Cook County State's Attorney office to join the Litigation Dept. of the Chicago law firm of Gordon, Elden, Schlack, Glickson, Gordon.

For news of other alumni in Iowa, see Alpha Pi.

Alpha Psi

J. Everett Blackburn, Presbyterian '62, Athens, GA, recently became department manager of Johnson & Johnson's Chicopee Plant in Georgia.

Loren D. Eagles Jr., Presbyterian '62, Shrewbury, NJ, is director of development at the Jersey Shore Medical Center in Neptune, NJ. He formerly worked in a similar capacity at Monmouth College.

David C. Mabie, Presbyterian '62, Nokesville, VA, has been an investigator with the Prince William County Police Dept. for the past eight years.

The Rev. James G. Monroe Jr., Presbyterian '58, Fort Lauderdale, FL, became rector of St. Michael the Archangel Anglican Catholic Church of Fort Lauderdale in 1978.

Col. Christian Patte, Presbyterian '53, Springfield, VA, is executive officer to vice admiral Kent J. Carroll at the Office of the Joint Chiefs of Staff at the Pentagon. He recently returned from three years in Germany, where he was commander of the Combat Equipment Group Europe and later deputy commander of the 10,000-man 2nd SUPCOM with headquarters in Stuttgart.

The Rev. Mills J. Peebles, Presbyterian '52, North Augusta, SC, has left the Columbia Church of Decatur, GA to become pastor of the Fairview Presbyterian Church of North Augusta.

Beta Gamma

W. J. Bonville, Bethany '47, Pasadena, CA, reports that his book, *Footnotes to a Fairytale*, has been selected for consideration by the award committee of Phi Beta Kappa for the Ralph Waldo Emerson Award.

Robert A. Sandercox, Bethany '51, Bethany, WV, has been named interim president of Bethany College.

Beta Epsilon

Bruce Abel, Lehigh '76, Ellicott City, MD, works at Seagram's in Baltimore and coaches little league hockey.

Lance Bell, Lehigh '76, Devon, PA, is a chemical engineer and part-time blimp pilot for B. F. Goodrich.

Wally Fields, Lehigh '49, Bethlehem, PA, is associated with Textile Chemical in Reading. He also is Class of '52 fund-raising agent and on the Board of Directors of Lehigh.

Neal Horst, Lehigh '60, Palmyra, PA, is assistant vice president of Buchart-Horn Engineering.

Richard B. Hunter, Lehigh '74, FPO San Francisco, CA, is an officer with the Civil Engineers Corps (Seabees) in charge of a 46-man detail at Camp Fuji, Japan.

Paul H. Krumrine III, Lehigh '70, Hatfield, PA, received a Ph.D. in chemical engineering in 1978 and now works in enhanced oil recovery as a research chemist with P.Q. Corp.

Ed Laughlin, Lehigh '76, Lexington, MA, specializes in chemicals for the auto industry as an employee of Grace Chemical in Lexington.

Bill Scheffley, Lehigh '53, Wescosville, PA, is a systems manager and past president of the Board of Governors and Board of Trustees of PP & L. He also officiates high school and college swim meets.

Geff Wallach, Lehigh '76, Stanford, CT, is associated with Stone and Webster.

For news of other alumni in Pennsylvania, see: Gamma, Alpha Pi, Alpha Tau, Beta Chi, Gamma Epsilon, Gamma Tau.

Memorial Fund contributions

Contributions to the Memorial Fund are often made to honor living brothers, friends or relatives.

Other contributions honor those who have entered Omega Chapter.

The Memorial Fund is a tax-exempt public foundation whose earnings underwrite the scholarship and educational programs of Alpha Sigma Phi.

Honor gifts

Evin C. Varner in the name of Delta Eta Chapter, East Carolina University, upon the occasion of its chartering.

Memorial gifts

A. W. Lubbers in memory of C. Russell Kramer; **Evin C. Varner** in memory of Gary Dark.

Beta Zeta

Gregory R. Williams, NC State '78, Cairo, GA, is a project engineer in the Bearings Division of the Torrington Co. in Cairo.

For news of other alumni in North Carolina, see Alpha Zeta, Alpha Nu, Beta Theta, Beta Omicron, Beta Psi.

Beta Theta

John F. Gordon, Rutgers '35, West End, NC, retired from Allied Chemical Corp. in 1978 and moved to NC last year from Ramsey, NJ.

Joseph J. Kunigonis, Rutgers '71, Lodi, NJ, reports that Beta Theta chapter has completed house improvements and purchased new rugs and televisions.

Dr. Donald M. Pfiefer, Rutgers '42, Milford, DE, has been board certified by the American Medical Academy of Orthopedic Surgeons.

For news of other alumni in New Jersey, see Alpha Psi Iota.

Beta Mu

J. Tyler Cox, Wake Forest '75, Winston-Salem, NC, received a second-place award

in writing competition sponsored by the International Association of Business Communicators, NC Piedmont chapter.

The Rev. Terry L. Matthews, Wake Forest '72, Kernersville, NC, has been appointed to the faculty of Greensboro College as lecturer in old Testament. He is associate minister at Main St. United Methodist Church in Kernersville.

Douglas S. Pungler, Wake Forest '66, Pfafftown, NC, and his wife were named "Family of the Year" for 1979 by the Wedgewood Civic Association. He also was elected to the board of directors of the Twin-City Kiwanis Club.

For news of other alumni in North Carolina, see Alpha Zeta, Alpha Nu, Beta Theta, Beta Omicron, Beta Psi.

Beta Xi

Robert F. Swift, Hartwick '59, Plymouth, NH, named chairman of the Music Department at Plymouth State College in New Hampshire.

Beta Omicron

R. R. "Skip" Bryan, Tri State '63, Greensboro, NC, has been named vice president and general partner in the Utility Service Co. of Madison, NC. He joined the firm in 1971 and has worked in field services and sales in four states.

John W. Doran, Tri State '69, Ontario, Canada, has been elected to the City Council of Brockville.

For news of other alumni in Indiana, see Eta, Alpha Omicron.

Beta Rho

Dr. Robert D. Braun, Toledo '58, Grand Forks, ND, has joined the faculty of the University of North Dakota School of Medicine.

For news of other alumni in Ohio, see Eta, Alpha Omicron.

Beta Sigma

Donald W. Murphy, Cincinnati '64, Cincinnati, OH, is owner of Leisure Market Developers, a marketing firm for Leisure Time Products.

Dan Peake, Cincinnati '68, FPO San Francisco, CA, works as an environmental health and public sanitation officer in Okinawa.

For news of other alumni in Ohio, see Eta, Alpha Omicron.

Beta Tau

Lawrence W. Hubbard, Wayne State '47, Brutus, MI, serves as president of the "Tip of the Mitt Watershed Council," a water protection group of property owners and civic groups.

For news of other alumni in Michigan, see Eta and Phi.

Beta Upsilon

Loran K. Hein, Milton '56, Kenosha, WI, is fencing coach and administrative assistant in athletics at the University of Wisconsin-Parkside in Kenosha. He has coached a number of national award-winning fencers.

For news of other alumni in Wisconsin, see Eta, Theta, Phi.

Beta Chi

David K. Bullard, American '61, Devon, PA, has been promoted to head the Group Department of INA International Corp., a job which includes world-wide travel.

Barry B. Cauffiel, American '74, Silver Spring, MD, is director of Corporate Security

Alumni of the Los Angeles area are invited to take part in a special Alpha Sigma Phi gathering on October 11, 1980 in conjunction with the UCLA-Stanford game. The event will be of special interest, of course, to Tau and Alpha Zeta alumni. For information, contact **Robert W. Kutz, California '67**, 66 S. Grand Oaks Ave., #4, Pasadena, California 91107.

and Safety for the Marriott Corp. in Washington, DC.

Beta Psi
William J. Martin Jr., RPI '75, Camp Lejeune, NC, is supply officer at the U.S. Marine Corps Rifle Range Detachment at Camp Lejeune.

For news of other alumni in New York, see Psi, Gamma Rho, Gamma Chi.

Gamma Alpha
Thomas K. English, Ohio Northern '74, Ada, OH, is president of the chapter's Tri-Angular Alumni Association.

For news of other alumni in Ohio, see Eta, Alpha Omicron.

Gamma Delta
Robert G. Baker Jr., Davis & Elkins '72, Columbus, MS, has been promoted to Captain and Regular Officer while in pilot training at Columbus Air Force Base, MS.

Gamma Epsilon
Scott R. Kriz, Buffalo '66, Omaha, NE, is a U.S. Air Force 747 pilot assigned to the National Emergency Airborne Command Post in support of the President.

Richard Planavsky, Buffalo '64, Buffalo, NY, has been appointed executive assistant to the Mayor of Buffalo.

James E. Ryan, Buffalo '64, Pittsburgh, PA, left the U.S. Air Force as a Captain in 1972 and is now district manager of the Michelin Tire Corp. in Pittsburgh.

For news of other alumni in New York, see Psi, Gamma Rho, Gamma Chi.

Gamma Iota
Jon W. Alquist, Arizona '59, Tucson, AZ, is assistant editor of the University of Arizona Alumni Association. Since leaving the U.S. Air Force as a Captain in 1976, he has won a number of national awards for press guides and programs which he edited in the University's Sports Information Office.

Lt. Cmdr. Ronald E. Weller, Arizona '65, Chesapeake, VA, was promoted recently to his present rank. He is stationed aboard the USS Dwight D. Eisenhower, the world's mightiest aircraft carrier, working in the combat information center.

For news of other alumni in Arizona, see Alpha, Psi.

Gamma Kappa
Arnold R. Beyer, Michigan State '59, Traverse City, MI, has worked for 19 years with Amoco Oil. He invites Alpha Sigs to visit him in the resort town of Traverse City.

Owen W. Gregg, Michigan State '61, Excelsior, MN, is Minneapolis branch manager of Fries & Fries, a flavor manufacturing firm that sells to the food, beverage and distilled spirits industries.

For news of other alumni in Michigan, see Eta and Phi.

Gamma Mu
George M. Spadaro, Charleston '63, Stanford, CT, joined the Wall Street investment banking firm of Moseley, Hallgarten, Estabrook & Weeden last year as senior vice president, director of product development and marketing.

Gamma Nu
Arnold J. Carston, Sacramento State '53, St. Helena, CA, and his wife hosted the annual Sacramento Alumni Council Sig Bust at their



Top left — Bay Area Alumni Council retiring president Bill Needham, California '26 (who later received the Delta Beta Xi) turns over the keys to the presidential wine cabinet (!) to be crowned president-elect Tux Wadsworth, California '17. Center — Emmet B. Hayes, Stanford '31, reads the Distinguished Service citation presented to the former Grand Senior President. At right — Bill Greuner, California '29, right, was one of several Council members to receive their Gold Anniversary award citations from Garrett F. Riegg, California '66. on left. Bottom, left. Executive Secretary Emeritus Ralph F. Burns addresses the Council prior to presenting the Distinguished Service award to Hayes. At right, Peter E. Sylvester, Stanford '50, center, presents Bay Area scholarships to Bill Gail, Stanford '78 left and to Kirk Radke, Stanford '78. on right. (Radke is also a member of Phi Beta Kappa.)

Emmet B. Hayes, Stanford '31, led Alpha Sigma Phi as the Fraternity's Grand Senior President from 1954-1956. His support and involvement with the Fraternity preceded those years . . . and have continued in the decades following.

So December 7, 1979, Alpha Sigma Phi recognized the contributions of Hayes with the presentation of the Distinguished Service Award.

The presentation took place at the Bay Area Alumni Council's annual Founders' Day banquet in Oakland, CA. The event drew a record 75 brothers representing 10 different Chapters of Alpha Sigma Phi.

Ralph F. Burns, Executive Secretary Emeritus of Alpha Sigma Phi was on hand to make the presentation.

Also recognized was **William S. Needham, California '26**, awarded the coveted Delta Beta Xi. Needham, who has served the Council as president for two terms, received the award from **Wallace M. Burr, Washington '23**, and a member himself of Delta Beta Xi.

Peter E. Sylvester, Stanford '50, introduced an undergraduate delegation from Stanford's Tau Chapter and presented on behalf of the Council scholarships to **William Gail, Stanford '76** and **Kirk Radke, Stanford '76**.

home recently. **Paschal Monk '60**, Sacramento, CA, council president, reports that the following alumni brothers and their families attended: **Ron Wudel '60**, Sacramento, CA; **Michael Levison '63**, San Mateo, CA; **Bob Quintella '65**, Sacramento, CA; **Truman Holtzclaw '64**, Fair Oaks, CA; and **Steve Foy '61**, Esparto, CA. Also reported there were **Bill Kaslar '61**; **Tim Fitzer '60**; and **Rod Graham '65**—we can't tell you where they're from, however, because according to Headquarters records those last three brothers are "lost". (Send in your addresses, brothers!)

Robert C. Howell, Sacramento State '62,

New officers of the Council were announced at the elaborate banquet. **Trusten P. "Tux" Wadsworth, California '17**, is the new president. **John F. Doane, California '36**, was elected vice president and **Wallace M. Burr** was re-elected as treasurer.

Ted Schmidt, Stanford '32, journeyed from Olympia, Washington to the banquet. **Dick Hanna, Stanford '29**, came from Carson City, Nevada. **Lt. Clyde P. Dietz, Oregon State '70**, came from Pacific Beach, Washington to join his father, **Henry A. Dietz, California '25**, at the banquet. **Ed Ragan, California '37**, flew in from Reno. And others came from long distances as well as the Bay Area itself.

Garrett F. Riegg, California '66, presented Golden Anniversary Awards to a group of Council members. **Roland D. Fontana, California '27**, presented a special president-emeritus award to **Ed Drew, California '16**, in appreciation of Drew's long leadership and guidance to the group.

It was a special evening of special presentations. But most special of all was the spirit of brotherhood. And that exists when any group of Alpha Sigs gather—especially when they're from the Bay Area Council.

Stockton, CA, is resident investigator in charge of the Food and Drug Administration's Hawaii Field Office in Honolulu.

For news of other alumni in California, see Eta, Mu, Pi, Psi, Theta, Alpha Pi, Beta Gamma, Alpha Omicron, Alpha Tau, Beta Sigma.

Gamma Xi
Michael Borden, Widener '64, Wyomissing Hills, PA, now a consulting engineer with Gilbert Associates Inc.

Charles F. Crampton, Widener '76, Lansdowne, PA, is assistant banking and money transfer system analyst for XRT Corp. in Broomall, PA.

(continued next page)



Charles Warner, Harvard '19

For news of other alumni in Pennsylvania, see:
Gamma, Alpha Pi, Alpha Tau, Beta Chi,
Gamma Epsilon, Gamma Tau.

Gamma Omicron

William T. Paul Jr., Tulane '72, Houston, TX, expects to receive an M.B.A. from Rice University in May. He plans to enter public accounting.

Gamma Rho

Robert W. Figlerski, Lycoming '77, Hempstead, NY, is completing requirements for a Ph.D. in clinical psychology at Hofstra University.

For news of other alumni in Pennsylvania, see:
Gamma, Alpha Pi, Alpha Tau, Beta Chi,
Gamma Epsilon, Gamma Tau.

Gamma Tau

Kenneth R. Rauscher, Indiana Tech '70, Hellertown, PA, reports that 75 persons are expected to attend Gamma Tau's 10th reunion in July at the Playboy Club in Lake Geneva, WI.

Gamma Upsilon

Terry Hawke, Eastern Michigan '67, Orchard Lake, MI, was elected alumni president at the Chapter's Homecoming Dinner/Dance. Other officers elected include **Jim Reineiti '70**, Grosse Point Woods, MI, vice president; **Dave Estes '71**, Riverview, MI, secretary; and **Bill Rowan '74**, Belleville, MI, treasurer. Three alumni events are scheduled for 1980.

For news of other alumni in Michigan, see
Eta and Phi.

Gamma Phi

Larry D. Pence, Concord '78, Covington, VA, now a graduate student at Radford University and resident director of Moffett Hall.

John R. Thomas, Concord '74, Welch, WV, is a social service worker for the Department of Welfare office in Welch.

Gamma Chi

Robert W. Anderson, Indiana '71, Frewsburg, NY, writes songs, plays guitar and sings with "Southern Tier Express" in western New York.

For news of other alumni in Indiana, see Eta,
Alpha Omicron.

Delta Alpha

Raymond S. Niles, Loyola '78, Niles, IL, is postal finance officer assigned to the 147th Postal Detachment in Heidelberg. He is responsible for the operation of seven post offices.

For news of other alumni in Illinois, see Pi, Phi,
Alpha Eta, Alpha Iota, Alpha Pi.

Delta Epsilon

Stacy C. Osborne, Rio Grande '72, Eastlake, OH, is a member of the Class of '83 at the Ohio College of Podiatric Medicine in Cleveland.

Delta Zeta

Paul E. Fomberg, UNC-Charlotte '78, Greensboro, NC, is a graduate student at Middle Tennessee State University in Murfreesboro.

For news of other alumni in North Carolina, see
Alpha Zeta, Alpha Nu, Beta Theta, Beta Omicron,
Beta Psi.

News and photo of yourself? Share it. The Tomahawk,
P.O. Box 4351, Charlotte, N.C. 28204.

Chapter Consultant position applications are being accepted by the Fraternity. Write Alpha Sigma Phi, 24 W. William St., Delaware, Ohio 43015.

Volunteer an hour or two of your time. Alpha Sigma Phi has a job for you to fit your interests and schedule. It's fun and rewarding. Contact Headquarters at the address above.

Salutes to Sigs!

Beta

Charles H. Warner, Harvard '19, was recently honored for 10 years of service to the Berkeley-West Contra Costa (California) Chapter, American Red Cross. Warner designed a new accounting system for the chapter and took responsibility for getting it started. He also wrote an operations manual for the chapter's accounting. He began as a volunteer driver

for the Red Cross. Several years ago he received the Clara Barton Award, a national award for outstanding service.

Brother Warner, a supporting member of the Bay Area Alumni Council, is also editor of the monthly newsletter of the Peralta (Berkeley) Branch of the Sons In Retirement (SIR's).

Omega Chapter

The memory of brothers who enter Omega Chapter may be honored by contributions to the Alpha Sigma Phi Memorial

C. Russell Kramer, Rutgers '31, Chatham, NJ. Prominent attorney. Served on the Fraternity's law committee for 17 years. Named to Delta Beta XI in 1951. Awarded the Fraternity's Distinguished Service Award in 1974. Guided Alpha Sigma Phi in many legal matters. Flags at Rutgers flew at half-mast on the day of his funeral.

Anthony Brandenthaler, Washington '16, Baker, Oregon. One of the founders of Mu Chapter. A prominent businessman, he was chairman of the Oregon Centennial Commission in 1959. In 1966, the city of Baker proclaimed "Anthony Brandenthaler Day" in honor of his civic service to the region.

Alpha: N. B. Parsons Jr., Yale '22, Sarasota, FL. **Beta:** Dr. Frank B. Cutts, Harvard '25, Providence, RI; Charles L. Bartlett, Harvard '20, Beaumont, TX. **Gamma:** Earle C. Prouty, Massachusetts '28, Guilderland, NY; Harold W. Brewer, Massachusetts '13, Naples, FL; Ray K. Thompson, Massachusetts '33, Northfield, MA. **Delta:** Nixon L. Unger, Marietta '14, Fort Lauderdale, FL. **Epsilon:** Kirk A. Thomas, Ohio Wesleyan '17, Long Beach, CA; Neal E. Artz, Ohio Wesleyan '20, Auburn, CA. **Zeta:** Marion J. Herman, Ohio State '29, Vanlue, OH; Neal F. Gillam, Ohio State '18, Upper Darby, PA. **Eta:** Sherman C. Anderson, Illinois '29, Albuquerque, NM; Raymond C. Raaf, Illinois '20, Northbrook, IL; Carl K. Walbert, Illinois '30, Tucson, AZ; Edward C. Medal, Illinois '34, Mt. Prospect, IL; Clinton C. McCune, Illinois '39, Batavia, IL; Paul L. Payton, Illinois '20, Oklahoma City, OK; James E. Havel, Illinois '35, Rhinelander, WI; Lt. Col. Russell L. Ostermeier, Illinois '31, Seaside, OR; Marshall Miller Cooledge, Illinois '22, Westfield, NJ; Cornelius Kruse, Illinois '15, Middletown, CT; Robert D. Leigh, Illinois '53, Albuquerque, NM. **Theta:** Frank R. Briggs, Michigan '25, Sarasota, FL. **Lambda:** J. E. Conn, Columbia '10, Muskogee, OK. **Mu:** William J. MacDonald, Washington '68, Portland, OR; Eugene L. Coulon, Washington '39, Ravensdale, WA. **Omicron:** Harry E. Dickens, Pennsylvania '29, Philadelphia, PA; Maurice H. Masland Jr.,

Fund... gifts that live on by underwriting the scholarship and educational programs of Alpha Sigma Phi.

Pennsylvania '15, Leesburg, FL; Richard H. Masters, Pennsylvania '46, Hamilton, Berumda; Joseph H. Willits, Pennsylvania '16, Langhorne, PA; Christian Heurich Jr., Pennsylvania '20, Chevy Chase, MD. **Pi:** Raymond R. Appel, Colorado '29, Grand Junction, CO. **Sigma:** Thomas B. Nantz, Kentucky '35, West Richfield, OH; Charles A. Lisanby, Kentucky '18, Princeton, KY. **Upsilon:** John F. Horting, Penn State '30, Lancaster, PA; Donald D. Marshall, Penn State '22, River Edge, NJ. **Phi:** Howard C. Reeder, Iowa '26, Wilmette, IL. **Psi:** Chester A. Klink, Oregon State '40, Portland, OR; Garold C. Gray, Oregon State '26, Tacoma, WA; Herman W. Mende, Oregon State '20, Portland, OR; Dr. L. W. Rising, Oregon State '40, Seattle, WA; F. Fontaine Freeman, Oregon State '23, Santa Fe, NM. **Alpha Alpha:** William E. Hood, Oklahoma '24, Erick, OK. **Alpha Gamma:** Leroy L. Byerly, Carnegie Tech '25, Pittsburgh, PA. **Alpha Delta:** Urho A. Makela, Middlebury '29, West Wareham, MA; Archie K. Sloper Jr., Middlebury '29, Wilton, CT. **Alpha Epsilon:** J. P. Orcutt, Syracuse '29, Ontonagon, MI; Edward F. Barry, Syracuse '25, Missoula, MT; Russell S. Lewis Syracuse '25, Hallowell, ME. **Alpha Zeta:** John I. Douglas, UCLA '43, Santa Ana, CA. **Alpha Lambda:** Lynn B. Crosby, Case '26, Springfield, IL. **Alpha Xi:** Joseph A. Bechtold, IIT '39, Wilmette, IL. **Alpha Chi:** Roscoe E. Beedee, Coe '28, Minneapolis, MN. **Alpha Psi:** Edgar R. Cole, Presbyterian '49, Asheville, NC; Col. Daniel C. Bird, Presbyterian '39, Alexandria, VA. **Beta Gamma:** Charles A. Sommer, Bethany '71, Pittsburgh, PA. **Beta Delta:** Austin H. Henning, Marshall '47, Jarrattsville, MD. **Beta Kappa:** Philip Foley, Centre in Kentucky '36, Port Allegany, PA. **Beta Mu:** Gary Lee Dark, Wake Forest '74, Charlotte, NC. **Beta Rho:** Lyle K. Nollenberger, Toledo '39, Stony Ridge, OH. **Beta Tau:** Harry L. Endsly, Wayne State '47, Detroit, MI. **Beta Psi:** Anthony F. DiMarco, Rensselaer '45, Wappingers Falls, NY. **Gamma Alpha:** H. Grant Heckler, Ohio Northern '43, Mount Vernon, OH. **Gamma Gamma:** Edward V. Berard, Connecticut '43, West Hartford, CT. **Gamma Delta:** Lynn D. Clark Jr., Davis & Elkins '51, Jasper, AL.

THE TOMAHAWK

A publication of Alpha Sigma Phi

Winter 1980

Postmaster: Change of address form No. 3579 should be sent to Alpha Sigma Phi, 24 West William Street, Delaware, Ohio 43015.

Address corrections: Please help us keep our addresses up to date. If the man named on label is no longer in college and not at this address, please advise us. Please tell us about any spelling errors or other mistakes. When moving, notify Headquarters as far in advance as possible.