

NOV 9 1922

PETITION
OF
DELTA KAPPA RHO
OF
University of Oklahoma
TO
ALPHA SIGMA PHI
FRATERNITY

PETITION

We, the undersigned, students in good standing in the----University-----
-----of Oklahoma----- located at ---Norman,---Oklahoma. ---
having hereunto attached our individual and class records, a history of our alma mater, and our
organization, do hereby petition Alpha Sigma Phi Fraternity to grant to us and to our suc-
cessors a Charter for a Chapter of the Fraternity at this institution and to assign us a Chapter
Letter.

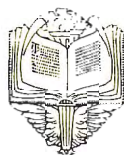
Should this Charter be granted we agree to support the Constitution and By-Laws, Rules
and Regulations, Customs, Laws and Traditions of Alpha Sigma Phi Fraternity, to perform its
rituals, and to perform our part in the government and support of the Fraternity as such, and,
under its laws govern ourselves as a Chapter in harmony and good fellowship, and that we and
our successors shall work for the best interests and advancement of the Fraternity wherever
and whenever we may, it being understood that nothing in this pledge shall in any way conflict
with our religious or political scruples, or our duties and obligations to our college, our family,
ourselves, our country, or our God.

IN TESTIMONY WHEREOF, we have hereunto set our hands and seals the 23rd
day of October 1922.

Scott P. Spryres	J. Woody Dixon.
J. Mottar M. Robertson	Frank B. Rogers
Mrs. L. Robertson	J. L. Gorby
Lawrence Lee Olson	Leon M. White
Wm. Maguire	Earle Hunt
Galvin P. Boxley	Wm. J. Carter
John B. Miles	Wm. A. White
	Chas. H. Fox



AIRPLANE VIEW OF CAMPUS, UNIVERSITY OF OKLAHOMA



THE UNIVERSITY OF OKLAHOMA

In barely more than a quarter of a century, the University of Oklahoma has grown to an annual enrollment of more than 6000 students. The school was established by Oklahoma Territory in 1892. It has a campus of 120 acres in one square adjacent to the City of Norman. It now represents an investment of almost \$8,000,000.00. The University is supported by funds appropriated from the general revenue of the state and by an income from lands set aside by Congress for public domain.

There are now twelve buildings on the campus not including the president's home and a new printing plant just being completed. Besides this plant, two hospitals are operated in Oklahoma City by the medical department of the University, the larger having been completed in the past year after an expenditure of \$300,000.00.

The medical school of the University has been granted an "A" rating by the American Medical Association, which places the school on a par with the larger medical schools of the nation.

The law school is the strongest in the Middle West and a member of the American Association of Law Schools.

Through the school of journalism, the University was awarded the distinction last year of entertaining the annual convention of Sigma Delta Chi professional journalistic fraternity.

The school of geology in point of enrollment is the largest of any state university. It is also the largest school of geology west of the Mississippi river and maintains the largest department of petroleum geology in the United States.

The University also maintains standard schools and departments in all other branches of work offered by the larger universities of the country. In addition to the regular University courses, research is conducted in many lines of work of value to the state. The Oklahoma Geological Survey, the Bureau of Standards and the Highway testing laboratory are housed on the campus. The Hospital at Oklahoma is available to the citizens of the state.

The following degrees are offered: M. A., M. S., M. D., advanced engineering degrees, B. A., B. S., qualified by name of school; B. F. A., B. M., LL B., Ph. C., and Ph. G.

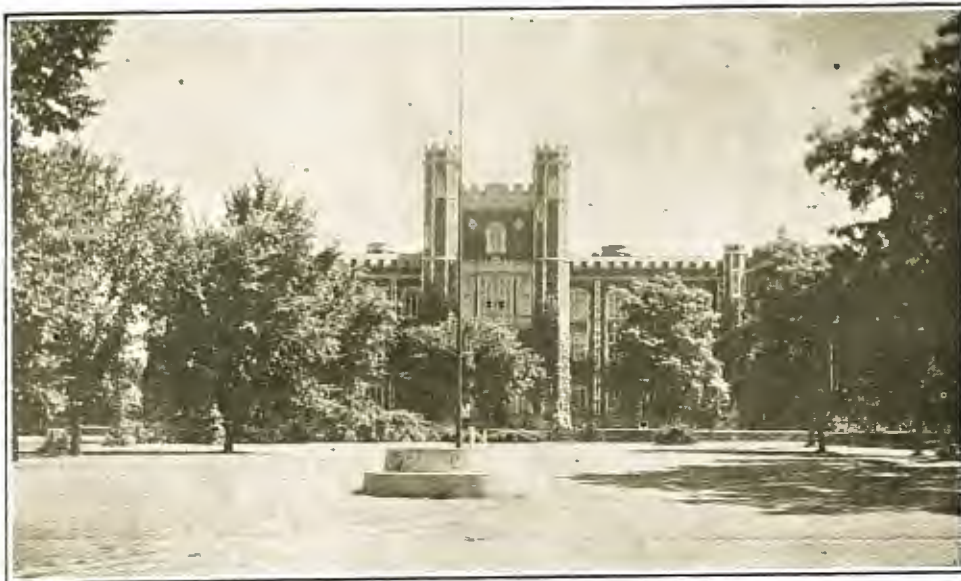
Due to clean sportsmanship, the University of Oklahoma was admitted and won the Missouri Valley championship in football in the same year, playing previously in the Southwestern Conference. Polo, basketball, baseball, tennis and track constitute the major sports on the campus.

The estimated enrollment of the University for the year 1922-23 is over six thousand and five hundred. The average annual increase for the past eight years is four hundred.

The University is a member of the American Association of Universities and Colleges, and is one of the four universities south of the Mason and Dixon line whose entrance requirements are equal to those adopted by the trustees of the Carnegie Foundation. The University was one of the three schools granted chapters of Phi Beta Kappa at the last Triennium, with fifteen schools petitioning for a charter, which in itself endorsed the standard of the schools and departments of the University.

The first dormitory ever built at a state university by a Masonic body was put into operation last year. It was built at a cost of \$250,000.00. There are three other dormitories on the campus representing an investment of half a million dollars.

Norman, the home of the University, is on the main trunk line of the Santa Fe and forms the southern terminus of an interurban which gives hourly service to Oklahoma City, eighteen miles north, capital and railroad center of the state.



ADMINISTRATION BUILDING



MONNET HALL, LAW BUILDING



HOLMBERG HALL, FINE ARTS BUILDING



DE BARR HALL, CHEMISTRY BUILDING



EDUCATION BUILDING



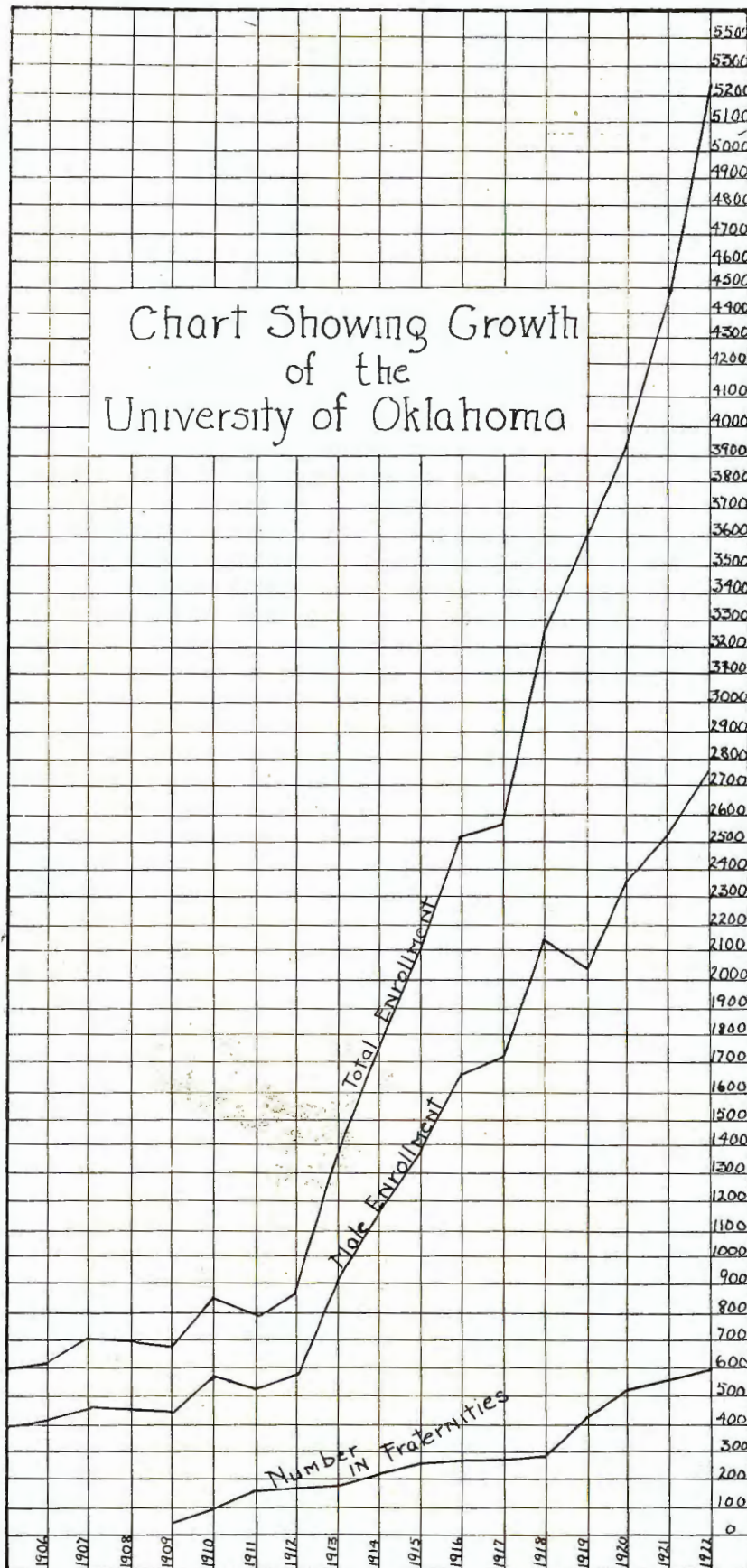
LIBRARY BUILDING



GEOLOGY BUILDING



ENGINEERING BUILDING





DELTA KAPPA RHO

Delta Kappa Rho was founded at the University of Oklahoma, January 5, 1921, by twelve men, and remained secretly organized until May 9, when formal announcement was made. The idea from the beginning was to petition a national fraternity which we could join our ideals to and feel proud of having done so. All old, well organized Greek letter fraternities have fine ideals, but we found through Professor Ivan G. Wright, Zeta, of the University of Oklahoma faculty, and Dan'l Hogan, Iota, Oklahoma City, that Alpha Sigma Phi has the ideals we want to live by and we trust that our ideals meet your approval in every way because that is the reason we have presented this petition.

Delta Kappa Rho is incorporated under the laws of the State of Oklahoma. Plans for a new home costing about \$25,000.00 have been drawn, and a plot 100 feet by 142 feet has been purchased near the campus at a cost of \$4,000.00 upon which we hope to erect our new home beginning next spring. We expect to raise the necessary money by selling bonds in the meantime. We have purchased furniture and fixtures amounting to better than \$700.00. Our total resources at present amount to \$5,147.32, and our total liabilities amount to \$5,147.32. This school year finds Delta Kappa Rho's financial prospects very bright, with all outstanding notes against members paid. The business connections of several members enable us to buy merchandise at very reasonable prices, all of which enables us to come out better financially and thereby improve our home.

The total membership of Delta Kappa Rho is as follows: Sixteen active members, twelve alumni, and nine pledges. It has been our policy to have only a small number of real fellows and every one a man first. The reason for this is because we felt that too many would spoil the real close fraternity spirit. In our group we have fourteen honorary organizations represented and almost every other organization on the campus. We have men from all over the state and balanced well among the schools and colleges of the University.

Delta Kappa Rho has occupied its present home since the fall of 1921. This home accommodates economically twenty-two men. From the beginning we have maintained a dining room. We have rented the home furnished, but are gradually replacing the rented furniture with our own. Thus distributing our financial obligations.

Delta Kappa Rho takes pride in her scholarship record for her average is much above that of the winner of the inter-fraternity council scholarship cup—won by the Acacias with an average of 2.8654. The average of Delta Kappa Rho for last semester was 3.6501, or close to a whole point above the winners. We hope to capture the cup when we are able to enter the inter-fraternity council. Only chapters of national fraternities are admitted.

Our social status on the campus is second to none. We gave five dances last school year among them were our costume dance, spring formal, and semi-formal dances. It is our custom to entertain faculty and sorority guests at Sunday dinners, and fraternity guests, rushees and others for Wednesday dinners.

We have our own songs, ritual, by-laws and constitution fully worked out and they have been in operation since our announcement.

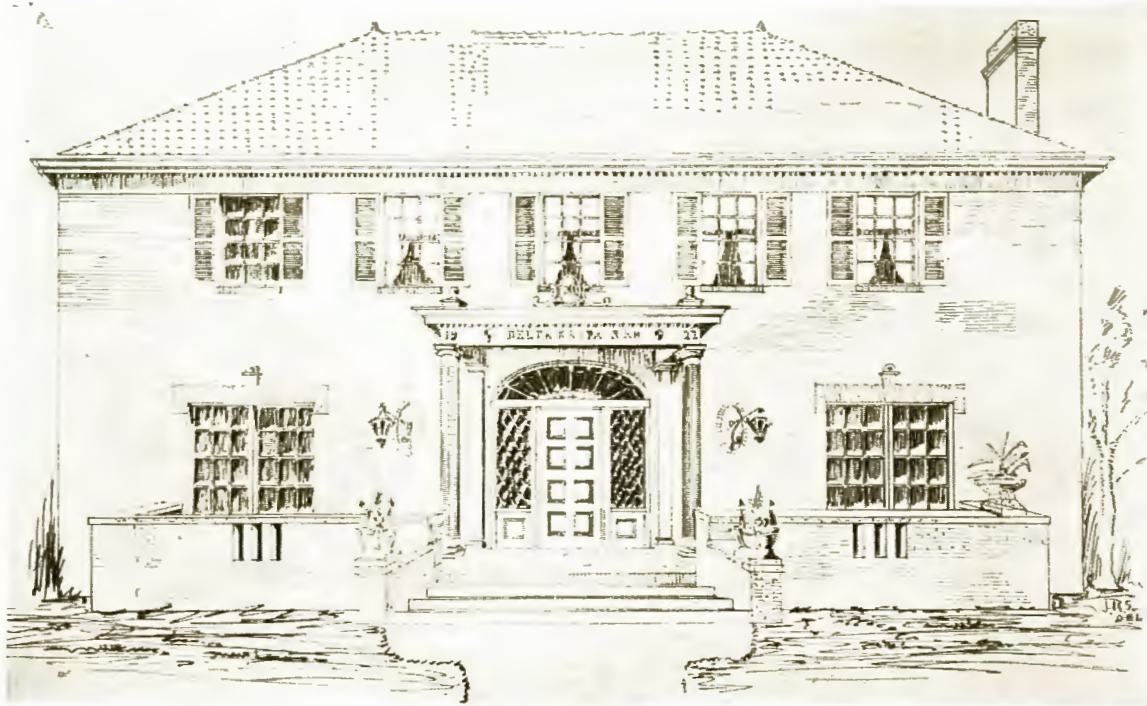




DELTA KAPPA RHO ORCHESTRA



OUR PRESENT HOME



OUR PROPOSED NEW HOME



AT HOME AFTER RUSH WEEK THIS FALL

FRATERNITIES AT THE UNIVERSITY

There are twenty men's social fraternities on the campus of the University of Oklahoma. They are given below in the order of their installation:

Kappa Alpha, Kappa Sigma, Beta Theta Pi, Sigma Nu, Sigma Alpha Epsilon, Sigma Chi, Phi Gamma Delta, Phi Delta Theta, Acacia, Sigma Alpha Mu, Phi Delta Psi, Pi Kappa Alpha, Phi Mu Alpha, Phi Delta Chi, Alpha Tau Omega, Delta Tau Delta, Delta Kappa Rho (petitioning Alpha Sigma Phi), Delta Pi (petitioning Delta Upsilon), and Pi Delta (petitioning Pi Delta Phi).

There are thirteen women's social fraternities on the campus. They are given in order of installation:

Kappa Alpha Theta, Delta Delta Delta, Pi Beta Phi, Kappa Kappa Gamma, Alpha Chi Omega, Alpha Phi, Delta Gamma, Gamma Phi Beta, Alpha Gamma Delta, Chi Omega, Alpha Xi Delta, Achuth, Omicron Pi (petitioning Alpha Omicron Pi).

The following national, Professional and Honorary Fraternities have chapters at the University of Oklahoma:

Phi Beta Kappa, Phi Delta Phi, Phi Alpha Delta, Alpha Kappa Kappa, Phi Beta Pi, Chi Zeta Chi, Sigma Tau, Sigma Gamma Epsilon, Sigma Delta Chi, Theta Sigma Phi, Alpha Kappa Psi, Delta Sigma Rho, Kappa Delta Pi, Phi Delta Kappa, Phi Mu Gamma, Phi Alpha Tau, Alpha Chi Sigma, Iota Sigma Pi, Sigma Delta Psi, Delta Psi Kappa, Kappa Kappa Psi, Scabbard and Blade, Kappa Tau Pi, Pi Zeta Kappa, Gamma Sigma.

The rapid growth of the University really dates from 1912 and since that time the University enrollment has increased approximately seven times while the number of fraternities has only increased about twice.

Men's Literary Societies: Congress, Athenaeon, Forum, Websterian. Departmental Clubs: Philosophical, Builders, Business Opportunity, Engineering, Sequoyahan, Pick and Hammer. Legal Organizations: Kulp Bar, Cheadle Bar and Blackstone Bar. Pep Organizations: Gob's Club, Ruf Necks. Student Council, Student Self-Governing Body: Oratorical Council, officers of all Literary Societies. Render Medal, for best Varsity oration.

Honorary Organizations: Plus Per, Medical; Tannin Club, Chemistry; Red, Red Rose, Teachers; Gamma Sigma, Goodfellowship; Alpha Kappa Kappa Medical; Phi Alpha Delta, Legal; Phi Delta Phi, Legal; Kappa Kappa Psi, Musical; Delta Sigma Rho, forensic; The Toga, most active all Varsity men; A. S. M. E., American Society of Mechanical Engineers; V Committee, honorary freshman Committee; Kappa Tau Pi, Religious; Sigma Tau, Engineers; St. Pats Board, Honorary executive committee of senior engineers.

ACTIVE MEMBERS OF DELTA KAPPA RHO



First Row—Scott Squyres, Matthew Robertson, Charles Fair, John Miles.
Second Row—Hugh Stites, Wesley Robertson, Hugh Goggin, Laurence Johnson.
Third Row—Alvin Gorby, Leon Willits, Wayne Barbour, William Wiggins.
Fourth Row—Earl Kuntz, Calvin Boxley, Woody Dixon, David Conrad.

BIOGRAPHICAL SKETCH OF ACTIVE MEMBERS

SCOTT PRESTON SQUIRES

Junior, School of Law. Father, Dallas R. Squires; mother, Fanny Isabella London; Born, Rosedale, Arkansas, July first, 1895; height, 5 ft. 7 in.; weight, 153 lbs.; complexion, dark; hair, black; eyes, light brown to gray; nationality, English-Irish-French.

Prepared for College at: The University Preparatory School, Tonkawa, Oklahoma. Honors: President of the Class of '17; Class Orator; President, Senate Literary Society '17; President of Y. M. C. A. '16-'17 and Delegate to 39th International Y. M. C. A. Convention '16; Preparatory School Band; Boy's Glee Club; Class Football '16; National Council Debating Club.

College Honors: President of Gob's Club '20; President, Philosophical Club '20; President Congress Literary Society (Organized 1897) '21; President, University of Oklahoma Band '20-'22; Historian, American Legion University Post 52 '21; Finance Officer American Legion Post 52 '22; Treasurer, Oratorical Council, '21; Chief Justice, Blackstone Bar '22; Kappa Kappa Psi, elected Grand President for years '21 to '23; Red Red Rose; Phi Alpha Delta; Chapter President '21-'22; Petition Editor.

JAMES MATTHEW MERRILL ROBERTSON

Sophomore, College of Arts and Science. Father, James Robertson Jr.; Mother, Cornelia Conley; born, Purcell, Oklahoma, June fourth, 1902; height, 5 ft. 11 in.; weight, 170 lbs.; complexion, light; hair, dark brown; eyes, blue; nationality, Scotch.

Prepared for College at: Purcell High School and San Antonio High School, San Antonio, Texas. Honors: President, Freshman Class; Vice-President, Sophomore, Junior and Senior Classes; Glee Club; President, Pierian Debating Society; Business Manager, High School Annual; President, University of Oklahoma Club.

College Honors: Ruf Necks; Congress Literary Society; Chapter Vice-President '21-'22.

CHARLES ATTICUS FAIR

Sophomore, College of Arts and Science. Father, C. E. Fair; Mother, Anne Fair. Born, DeQueen, Arkansas, January eighteenth, 1899. Height, 5 ft. 10 in.; weight, 153 lbs.; complexion, light; hair, brown; eyes, blue; nationality, Irish.

Prepared for College at: Wilburton High School, Wilburton, Oklahoma. Honors: Four Years on High School Debate Team, and Quartet; Declamation, winner of gold medal; President, Freshman Class; President, Excelsior Literary Society; four years regular football team.

College Honors: Winner of Render Medal '21 in Oratory; Delta Sigma Rho; winner of Inter-Society Oratorical Contest '21.

JOHN BUS MILES

Sophomore, College of Arts and Science. Father, Edgar W. Miles; Mother, Ollie Cook.

Born, Edwardsville, Illinois, March twenty-eighth, 1903. Height, 5 ft. 10 in.; weight, 145 lbs.; hair, brown; complexion, light; eyes, brown; nationality, English.

Prepared for College at: Purcell High School, Purcell, Oklahoma. Honors: President, Senior Class; Vice President, Junior Class.

HUGH DINSMORE STITES

Junior, School of Medicine. Father, H. L. Stites; Mother, Alma Cockrell. Born, Pilot Grove, Missouri, September sixteenth, 1900. Height, 5 ft. 7 in.; weight, 154 lbs.; complexion, dark; hair, black; eyes, gray; nationality, Scotch-Irish.

Prepared for College at: Pryor High School, Pryor, Oklahoma. Honors: Basket Ball; Debate Team three years; Crissmore Literary Society; Class Play; Valedictorian; Manager of Football Team.

College Honors: Alpha Kappa Kappa; Plus Per; Tannin Club; Junior Burlesque.

WESLEY LeROY ROBERTSON

Junior, School of Fine Arts. Father, Albert M. Robertson; Mother, Viva Nail. Born, Caddo, Oklahoma, November sixth, 1901. Height, 5 ft. 10 in.; weight, 140 lbs.; complexion, dark; hair, black; eyes, brown; nationality, Scotch-Irish-Indian.

Prepared for College at: Oklahoma City High School, Oklahoma City, Oklahoma. Honors: Glee Club; President, Websterian Literary Society.

Attended the University of California, Berkeley, California. Honors there: Freshman Glee Committee; Varsity and Frosh Glee Clubs; University Players; Community entertainers.

College Honors: Glee Club; Sooner Players; Vice-President Drama League; Drum Major, University Band; Kappa Kappa Psi; Gamma Sigma; Feature Dancer Stadium Stunt Night.

HUGH DANIEL GOGGIN

Junior, College of Arts and Science. Father, J. J. Goggin; Mother, Eva Washburne. Born, Kansas City, Missouri, September twenty-third, 1902; Height, 5 ft. 11 in.; weight, 150 lbs.; complexion, light; hair, black; eyes, gray; nationality, Irish-Scotch-German.

Prepared for College at: Kansas City Central High School, Kansas City, Missouri. Honors: High School Club.

College Honors: Chapter Vice President '22.

LAURENCE LEE JOHNSON

Junior, School of Law. Father, Charles Tilden Johnson; Mother, Josephine Marrs. Born, Greensburg, Kansas, April fifteenth, 1900. Height, 5 ft. 11 in.; weight, 190 lbs.; complexion, dark; hair, dark brown; eyes, gray; nationality, English.

Prepared for College at: Greensburg, Kan-

sas. Honors: Four Years Football; Baseball; Track; Manager of High School Annual.

College Honors: Treasurer of All Freshman Law Class '22; Congress; American Legion; Phi Alpha Delta; Kulp Barr.

ALVIN LEVI GORBY

Sophomore, School of Medicine. Father, Dr. Wilbur R. Gorby; Mother, Daisy S. Stemple. Born, Spencer, West Virginia, July twenty-sixth, 1901. Height, 5 ft. 11 in.; weight, 158 lbs.; complexion, light; hair, brown; eyes, blue; nationality, English.

Prepared for College at: Oklahoma City High School, Oklahoma City, Oklahoma. Honors: Inter Class Basket Ball; Football; Forum Debating Society; Publication Representative.

College Honors: Vice President All Freshman Medical Class; Student Instructor in Anatomy; Alpha Kappa Kappa; Gamma Sigma; Chapter President '22.

LEON MASON WILLITS

Sophomore, College of Arts and Science. Father, Jacob Allen Willits; Mother, Winnie Mason. Born, Columbia City, Indiana, August first, 1900. Height, 5 ft. 9 in.; weight, 150 lbs.; complexion, light; hair, light brown; eyes, blue; nationality, Scotch-Dutch.

Prepared for College at: Columbia City High School, Columbia City, Indiana, and Kingfisher High School, Kingfisher, Oklahoma. Honors: Senior Play; Football; Glee Club; State Oratorical contest winner '18.

College Honors: Congress Literary Society; Business Opportunity Club; R. O. T. C. Football; Y. M. C. A.; Chapter Treasurer and Stewart '22.

CLIFFORD WAYNE BARBOUR

Senior, College of Engineering. Father, Wylie H. Barbour; Mother, Cora Denison. Born, Fort Sill, Oklahoma, March thirty-first, 1903. Height, 5 ft. 8 in.; weight, 154 lbs.; complexion, dark; hair, black; eyes, gray; nationality, English.

Prepared for College at: Norman High School, Norman, Oklahoma. Honors: P. D. C. Debating Club.

College Honors: Freshman Track Team; Engineers Representative on Student Council; Gamma Sigma; President, Builders Club, '21; A. S. C. E.; Pistol Team; Forum Literary Society; Freshman Supervision Committee; The Toga.

WILLIAM EDWARD WIGGINS

Junior, College of Engineering. Father, H. N. Wiggins; Mother, Mary Shipton. Born, Hillsboro, Iowa, May thirtieth, 1898. Height, 5 ft. 8 in.; weight, 138 lbs.; complexion, fair;

hair, brown; eyes, brown; nationality, Holland Dutch-English.

Prepared for College at: Tyrone High School, Tyrone, Oklahoma. Honors: Basket ball; track.

College Honors: Athenean; American Legion, University Post 52.

JEFFERSON EARL KUNTZ

Junior, School of Law. Father, Louis L. Kuntz; Mother, Laura Parker. Born, Euless, Texas, May seventh, 1901. Height, 5 ft. 11 in.; weight, 178 lbs.; complexion, dark; hair, dark brown; eyes, blue; nationality, Swiss.

Prepared for College at: Iowa Park High School, Iowa Park, Texas. Honors: Valedictorian; Editor of High School Annual; Football; President Literary Society; Senior Class President.

College Honors: Long Star Club; Forum Literary Society; Harper Bar; Students' Polo Association; Freshman Football; Chapter Vice President '22.

CALVIN PEYTON BOXLEY

Freshman, School of Law. Father, Clark C. Boxley; Mother, Dott Ash. Born, Butler, Missouri, November sixth, 1902. Height, 5 ft. 9 in.; weight, 123 lbs.; complexion, light; eyes, blue; nationality, English.

Prepared for College at: Kansas City Central High School, Kansas City, Missouri. Honors: Debate; Dramatics; Literary Society; High School Club; Senior Class Committee.

Attended University of Missouri, while there Chairman of Pre-Laws; Athenean Society.

College Honors: Congress Literary Society; Sequoyan; Master Counselor of DeMolay.

JOHN WOODY DIXON

Senior, School of Law. Father, L. P. Dixon; Mother, Ollie Graham. Born, Sunset, Texas, September fourth, 1900. Height, 5 ft. 9 in.; weight, 140 lbs.; complexion, ruddy; hair, brown; eyes, blue; nationality, Irish.

Prepared for College at: Burneyville High School, Burneyville, Oklahoma. Honors: Winner Declamation Contest; Basket Ball; Debating.

Other Colleges: Harvard Radio School, Certificate Course.

College Honors: Cheadle Bar; Congress Literary Society; Representative Oklahoma Legislature.

DAVID EBEN CONRAD

Sophomore, College of Engineering. Father, F. B. Conrad; Mother, Ruby Campbell. Born, Fort Worth, Texas, November twentieth, 1903. Height, 5 ft. 9 in.; hair, light; eyes, blue; nationality, Scotch-Irish.

Prepared for College at: Marietta High School, Marietta, Oklahoma. Honors: Literary Society; Class Football; Baseball; Tennis. College Honors: Engineering Club.

DELTA KAPPA RHO ALUMNI



First Row—Leslie Irving Varner, Orris Silvanus McDonald, Maurice Dale Scruggs.
Second Row—Harry Howard Link, Charles E. McPherren, William H. Atkinson.
Third Row—Lansing Scranton, Charles C. Miles, Edwin E. Suman.

AMONG THE DELTA KAPPA RHO ALUMNI

MAURICE DALE SCRUGGS

Geologist for the Marland Oil Company, Ponca City, Oklahoma. Thirty-Second Degree Mason.

College Activities: Junior, College of Engineering; Engineer's Club; Pick and Hammer Club.

ORRIS SILVANUS McDONALD

President, McDonald Supply Company, Bartlesville, Oklahoma. B. S. in Engineering Geology '22.

College Activities: President, Kappa Tau Pi; Vice-President Varsity Y. M. C. A.; Sigma Tau; Chapter President '22.

LESLIE IRVING VARNER

Geologist, Kansas City, Missouri.

College Activities: Junior, College of Arts and Science; V. Committee; Pick and Hammer Club.

WILLIAM H. ATKINSON

Field Geologist for W. R. Ramsey, Oklahoma City, Oklahoma.

College Activities: B. S. in Petroleum Geology '22; Pick and Hammer Club; Websterian.

CHARLES E. McPHERREN

Lawyer, Durant, Oklahoma; State Senator; Spanish American War with Roosevelt's Rough Riders; Colonel in World War; Brigadier General of Oklahoma National Guard.

College Activities: T. B. University of Mississippi; Phi Delta Phi.

HARRY HOWARD LINK

Salesman for Wilson and Company, Chicago, Illinois.

College Activities: Junior, College of Arts and Science; Business Opportunity Club.

EDWIN E. SUMAN

Scout Executive and Bandmaster, Lawton, Oklahoma. Knights Templar; Shrine Band; Rotary Club.

College Activities: Red, Red Rose; Kappa Kappa Psi; Varsity Band and Orchestra; Drum Major; Assistant Bandmaster.

CHARLES C. MILES

Manager of University of Oklahoma Book Store, Norman, Oklahoma.

College Activities: B. A. in Public and Private Business '22; Red, Red Rose; Business Opportunity Club.

LANSING W. SCRANTON

Electrical Engineer for Oklahoma Electric Railway Company, Oklahoma City, Oklahoma.

College Activities: B. S. in Electrical Engineering '22; President A. S. M. E.; Sigma Tau; Builders Club; Class Football; Class Basketball; Engineers Club.

GEORGE A. VOTH

Manager of The Voth Ranch, Enid, Oklahoma; Aviator, World War; Mason.

College Activities: Junior, School of Law; Phi Alpha Delta; Kulp Bar; Congress; Inter-Bar Contest.

LLOYD C. KELTNER

Manager, Keltner Mercantile Company, Douglas, Oklahoma.

College Activities: Junior, College of Arts and Science; Congress; Business Opportunity Club.

GEORGE O. DUPY

Manager of The Dupy Ranch, Billings, Oklahoma.

College Activities: Junior, College of Arts and Science; Congress; Business Opportunity Club.

DELTA KAPPA RHO PLEDGES



First Row—Hawthorne Howard, James Wallace Boone, Ivan Hostetler.
Second Row—George Edward Phelps, Allen Yates Dunn, Fay Frank Hornkohl.
Third Row—William Loton Shippey, James Bryce Barnett, Paxton Harris Dent.

CONCERNING OUR PLEDGES

HAWTHORNE HOWARD

Marietta, Oklahoma. High School Activities: Dramatics; Band; Orchestra.
College Activities: Freshman, School of Pharmacy; University Band.

JAMES WALLACE BOONE

Caddo, Oklahoma. High School Activities: Track Team; Literary Society; Valedictorian.
College Activities: Freshman, College of Arts and Science.

IVAN HOSTETLER

Enid, Oklahoma. High School Activities: Annual Staff; Football; Literary Society.
College Activities: Freshman, School of Law; Freshman Football; Congress; Literary Society; Y. M. C. A.

GEORGE EDWARD PHELPS

Oklahoma City, Oklahoma. High School Activities: All State Guard, Football; Literary Society.
College Activities: Freshman, College of Arts and Science; Freshman Football.

ALLEN YATES DUNN

Wapanucka, Oklahoma. High School Activities: Football, Basket Ball, Track, Baseball (all letters).
College Activities: Freshman, College of Arts and Science; Freshman Football.

FAY FRANK HORNSKOHLE

Manitu, Michigan. High School Activities: Football; Orchestra.
College Activities: Freshman, College of Engineering; Varsity Band.

WILLIAM LOTON SHIPPEY

Stillwater, Oklahoma. High School Activities: Basket Ball; Football.
College Activities: Sophomore, College of Arts and Science; Varsity Football.

JAMES BRYCE BARNETT

Oklahoma City, Oklahoma. High School Activities: President of Glee Club; Director of Quartet; Orchestra; Band; Ciceronian Debating Society; Senior Play.
College Activities: Freshman, College of Arts and Science; Varsity Band; Kappa Kappa Psi (Pledge); Varsity Glee Club.

PAXTON HARRIS DENT

Greensburg, Kansas. High School Activities: Glee Club; Football; Basket Ball; Track; Two All School Plays; Booster Club; President, Y. M. C. A.
College Activities: Freshman, School of Journalism; Varsity Glee Club.

LETTERS OF RECOMMENDATION
FROM
THE UNIVERSITY OF OKLAHOMA

Office of the President
THE UNIVERSITY OF OKLAHOMA
NORMAN, OKLAHOMA

October 5, 1922.

Mr. Wayne M. Musgrave, Grand Junior President,
Alpha Sigma Phi, 120 Broadway,
New York City, New York.
Dear Sir:

Our local chapter of Delta Kappa Rho is petitioning your fraternity for a charter. This local is composed of a fine body of young men who will, in my opinion, constitute a satisfactory chapter of your fraternity.

The University has been growing very rapidly and the indications are that it will continue to do so. The result is that there is ample room for additional fraternities and our experience with the fraternities already installed is such that we welcome the addition of others. I commend, therefore, to your very favorable attention, the application of Delta Kappa Rho.

Sincerely yours,

STRATTON D. BROOKS,
President.

The Inter-Fraternity Council of
THE UNIVERSITY OF OKLAHOMA

October 19, 1922.

Mr. Wayne Musgrave, Grand Junior President
Alpha Sigma Phi Fraternity,
New York City, New York.
Dear Sir:

The Inter-Fraternity Council of the University of Oklahoma highly recommends Delta Kappa Rho for a chapter of Alpha Sigma Phi. Delta Kappa Rho was founded at the University of Oklahoma in 1921 and has made a steady growth since its founding. We feel that the phenomenal growth of this University has been such that there is room for another fraternity of such standing as Alpha Sigma Phi.

We feel that Delta Kappa Rho is made up of a class of men that will make a desirable addition to the National fraternities already here on the campus. We have no hesitancy in heartily recommending Delta Kappa Rho and we look forward with pleasure to the time when they shall become a National fraternity.

Very sincerely yours,

LAWRENCE R. HAGY,
Pres. Inter-Fraternity Council.

Office of Victor H. Kulp, Professor of Law
The School of Law
THE UNIVERSITY OF OKLAHOMA
NORMAN, OKLAHOMA

September 25, 1922.

Alpha Sigma Phi,
New York, N. Y.
Gentlemen:

The writer has been in close touch with Delta Kappa Rho for more than a year. It is indeed with pleasure that I recommend Delta Kappa Rho to you as a group worthy of being accepted into membership of any Greek letter fraternity.

Yours very truly,

VICTOR H. KULP,
Chairman, Board of Control.

Student Council
UNIVERSITY OF OKLAHOMA
NORMAN, OKLAHOMA

October 20, 1922.

Mr. Wayne M. Musgrave, Grand Junior President,
Alpha Sigma Phi Fraternity,
New York City, New York.

Dear Sir:

It is with pleasure that I recommend for your approval Delta Kappa Rho for a charter from your most worthy fraternity.

I have known individually the members of Delta Kappa Rho since their announcement as a local fraternity and will say that there are no more active men on the campus. They are in all worthy activities of the University and are held in high esteem by the whole student body.

I should like very much to see Alpha Sigma Phi place a chapter here and I feel that there could be no better group than Delta Kappa Rho for you to grant a charter to.

Sincerely,

ROBERT BELL,
President.

Dean of Undergraduates and Registrar
THE UNIVERSITY OF OKLAHOMA
NORMAN, OKLAHOMA

September 21, 1922.

To the Grand Council of Alpha Sigma Phi:

I take pleasure in recommending to your fraternity the members of the local group, known as Delta Kappa Rho, who are petitioning your organization. I believe that they are worthy of acceptance into your fraternity.

The petitioners include men active in all worthy campus activities. Moreover, they rank well in scholarship.

I think that there is room on the campus for this organization. It has been the policy both of the university authorities and of the student body to welcome new organizations, and I am sure that all would welcome a chapter of Alpha Sigma Phi.

Yours very truly,

ROY GITTINGER,
Dean of Undergraduates and Registrar.

School of Civil Engineering
THE UNIVERSITY OF OKLAHOMA
NORMAN, OKLAHOMA

September 29, 1922.

Alpha Sigma Phi Fraternity,
Attention Wayne M. Musgrave,
New York City, New York.

Sirs:

A group of young men, under the name of "Delta Kappa Rho," local fraternity, is petitioning your organization to become nationalized. I am glad to say a word for them.

I know many of the group and believe them to be of a very satisfactory type and good fraternity material. I feel that they should be given very careful consideration.

Yours very truly,

J. H. FELGAR,
Dean, School of Engineering.

Office of the Dean
School of Fine Arts
THE UNIVERSITY OF OKLAHOMA
NORMAN, OKLAHOMA

September 28, 1922.

The Alpha Sigma Phi Fraternity,
Care Wayne M. Musgrave, Grand Junior President,
New York City, New York.
Sirs:

Members of the Delta Kappa Rho local fraternity tell me they are petitioning the Alpha Sigma Phi for a Charter at the University of Oklahoma.

I know several of these boys and can vouch that they are up to standard and believe you will have reason to feel proud of them. The average scholarship of this chapter is above the average scholarship of men in the University. I do not think there is a member of this chapter that does not take part in some voluntary activity of the University outside their school work. They are men that are serious in their work and are not liable to let the "social bug" run away with them, while at the same time they are young men that are able to appear to advantage at any social function. I do not feel that you need to hesitate in granting them the charter. If I understand it right, they are not "left-overs" that other fraternities did not want, but boys that have banded together wishing to establish a chapter.

Very truly yours,

FREDRICK HOLMBERG,
Dean, School of Fine Arts.

School of Public and Private Business
THE UNIVERSITY OF OKLAHOMA
NORMAN, OKLAHOMA

September 30, 1922.

Mr. Wayne M. Musgrave, Grand Junior President,
Alpha Sigma Phi,
New York, N. Y.
Dear Sir:

Members of our local fraternity, Delta Kappa Rho, have informed me that they are making application to your national fraternity for a local chapter here. It is with pleasure that I make the following statement concerning the application:

This is the second year of the existence of the Delta Kappa Rho and it has therefore had time to prove its standing and work here at the University. Its membership consists of several of the leaders of student activity on the campus. Many of its members are self supporting men who have not only time to support themselves, but to exercise a worth while influence in university life. They are men who on the average have good scholastic records and would reflect credit on any national fraternity as representatives of that fraternity here on the campus.

You are probably aware that the University of Oklahoma is now one among the large educational institutions in the United States. Owing to the fact that there is only one dormitory for men here, this institution depends to a considerable extent upon fraternities to furnish homes and social life for its student body. There is not the least feeling of envy or bitterness between fraternity and non-fraternity men so far as I have been able to observe during the past nine years, and we feel that the establishment of additional local fraternities of a high standard is an asset to the University.

I feel certain that you would add standing, honor and influence to the Alpha Sigma Phi by accepting the Delta Kappa Rho as a local chapter at the University of Oklahoma.

Yours very truly,

A. B. ADAMS,
Director of the School of Public and Private Business.

LETTERS OF RECOMMENDATION

FROM MEMBERS OF

ALPHA SIGMA PHI FRATERNITY

Department of Sociology
THE UNIVERSITY OF OKLAHOMA
NORMAN, OKLAHOMA

August 15, 1922.

To Alpha Sigma Phi:

My connection with the University of Oklahoma began in February, 1922, and ever since I have had the splendid opportunity of judging the worth of Delta Kappa Rho as a local fraternity. I am personally acquainted with most of the members and find them to be a fine bunch of fellows. Coupled with this spirit of good fellowship is a desire for achievement in scholarship, campus activities and social leadership which is successful beyond any other local, and compares with any national fraternity on the campus.

I find their scholarship above the winners of the inter-fraternity council scholarship cup, which is composed of national fraternities. The winning fraternity had an average grade of 2.8654 and Delta Kappa Rho had an average for the same semester of 3.5601, which is almost a whole point above the winners. I find that Delta Kappa Rho has fourteen honorary fraternities represented among their members together with the National President of Kappa Kappa Psi, honorary musical fraternity. There is hardly a student activity but what has a representative of Delta Kappa Rho connected with some important part of it.

It has been my pleasure to look them up carefully and I want to recommend them to you unreservedly and wholeheartedly as excellent material for Alpha Sigma Phi and trust that you will waste no time in making your decision in their favor.

Fraternally,

IVAN G. WRIGHT, Zeta.

Rockledge
Ithaca, New York, October 15, 1922.

To the Chapters of Alpha Sigma Phi:

I heartily recommend the local fraternity, Delta Kappa Rho, which seeks a National charter of Alpha Sigma Phi.

For the last three months I have been in contact with members of Delta Kappa Rho and I consider them worthy of Alpha Sigma Phi. Not only are their ideals parallel with those of Alpha Sigma Phi, but each man is one of merit and good material for any fraternity.

As a climax to their greatness as a local they have "come through" with nine men as a result of the first semester "rush week." Most of these pledges were taken over strong nationals to my personal knowledge.

Oklahoma needs Alpha Sigma Phi and Alpha Sigma Phi needs Oklahoma. Let's go!

Fraternally,

DANIEL W. HOGAN, JR., Iota.

Oklahoma City, Oklahoma, October 15, 1922.

Alpha Sigma Phi Fraternity:

I hereby recommend to you Delta Kappa Rho, the petitioning body at the University of Oklahoma. I have been in association with its members for some time now and find them worthy of a charter from Alpha Sigma Phi fraternity.

The members of Delta Kappa Rho are held in high esteem due to their reputation for campus activity, scholarship and high moral standards. In the recent fall pledging campaign they have upset the "dope" by entering into the campaign with established National fraternities and have come through with "flying colors," and unprecedented feat at the University of Oklahoma. This speaks highly for them.

The University of Oklahoma is a fast growing institution with a bright future. The fraternity situation is not crowded and we can open up a new field for development of our fraternity. I believe we should enter the University of Oklahoma and I believe this is a wonderful opportunity for Alpha Sigma Phi.

Fraternally,

VICTOR STANGEL, Eta.

WASHINGTON UNIVERSITY

SAINT LOUIS

St. Louis, Mo., Sept. 28, 1922.

To Whom It May Concern:

I have had the opportunity during the past year to visit the University of Oklahoma at Norman, Oklahoma, a number of times. It is a very large university and is the leading school of the Southwest. I might add that they are a member of the Missouri Valley Conference. In their competition with the other members of the conference they have been very successful and have won some championships.

There is no doubt in my mind but what the University of Oklahoma is on a par with the type of schools at which there are chapters of Alpha Sigma Phi. Personally, I should like to see a chapter at this growing school and am therefore forwarding this recommendation.

Fraternally yours,

C. O. APPLEGRAN, Eta 1917.



INSTRUCTIONS TO CHAPTERS OF ALPHA SIGMA PHI

The within is a correct copy of a petition for a Charter from this Fraternity and should receive proper and prompt attention at your hands. It is prepared in accordance with the directions given the petitioners. The reports of the investigating committees, recommendations of members of faculties, other fraternities, etc., together with a finding from the G. J. P., etc., are attached.

These should be studied by every member of your Chapter to the end that he will be prepared to give proper consideration to the petition. Remember copies hereof are in the hands of your fellows in every Chapter and a prompt reply is not only due the petitioners, but also all within our own circle. Your reply should be in the form of a report under the hands and seals of your president and secretary directed to the G. J. P. and sent to him. Observe the provisions of the Fraternity Constitution in taking and reporting these votes. A majority vote of the members present decides the way in which your Chapter votes. Petitions can only be considered at a regular meeting of your Chapter unless every active member is present at a special meeting called for that purpose.

Respectfully,

DELTA KAPPA RHO

UNIVERSITY OF OKLAHOMA

NORMAN, OKLAHOMA



“BUM”
OUR MASCOT



SQUYRES-KIRKPATRICK PUB. CO.
Oklahoma City

Installation Banquet
of
Alpha Alpha Chapter
of
Alpha Sigma Phi Fraternity



Six-thirty P. M., May 19th, 1923



SKIRVIN HOTEL
Oklahoma City

MENU

Cream of Fresh Tomato au Craton

Crespe Radishe with Olives

Roast Young Chieken Gibblets

La Brown New Pot French Peas in Cream

Head Lettuce French Dressing

Neapolitan Ice Cream

Cake Coffee

PROGRAM

Toastmaster.....	Scott P. Squyres
Left Upon Leaving.....	Alvin L. Gorby
Your Choosing.....	Charles E. Hall
View to the Future	Calvin P. Boxley
As I See Them.....	Richard E. Stephens
Youngest of Sigs	Place Montgomery
Impressiveness and Alpha Sigma Phi.....	Irving D. Winslow

Songs

GUESTS

Irving D. Winslow.....Grand Secretary of Alpha Sigma Phi
Charles E. Hall.....Executive Secretary of Alpha Sigma Phi
Richard E. Stephens.....President of Xi Chapter
Dr. Ralph E. Myers.....Alumnus of Alpha Chapter
Victor Stangel.....Alumnus of Eta Chapter

CHARTER MEMBERS

Scott P. Squyres
James M. Robertson
Charles A. Fair
John Miles
Hugh Stites
Charler Miles
Hugh Goggin
Laurance L. Johnson
Alvin L. Gorby
Leon M. Willits
C. Wayne Barbour
William E. Wiggins
J. Earl Kuntz
Calvin P. Boxley
J. Woody Dixon
David Conrad

NEW MEMBERS

Dale Scruggs
Loton Shippey
George Phelps
Paxton Dent
David Fields
James Boone
Hawthorne Howard
Allan Dunn
Robert Zust
Ralph Chiles
Place Montgomery
Irvin Vogel
Charles Bebbington
Howard Couch



*The Grand Prudential Committee of
Alpha Sigma Phi Fraternity
announces the installation of
Alpha Alpha Chapter
at the
University of Oklahoma
Norman, Oklahoma
on
May nineteenth, nineteen hundred and twenty-three*

Price, 25 Cents

1922-1923 Edition

BLUM'S Commercial Travelers' Map of OKLAHOMA

SHOWING

RAILWAY SYSTEMS
RAILWAY DISTANCES
INTERURBAN TROLLEYS
LEADING INDUSTRIES and
Indexed Location of all towns
having a population of 1000 or
more. -: -: -:

Location of all Junction Points.
Population as per Census of 1920.
Directory of Commercial Hotels,
Hotel Rates, etc. -: -: -:

ALPHA SIGMA PHI FRATERNITY,
47 WEST 42nd STREET,
NEW YORK, N. Y.

BLUM'S COMMERCIAL MAP PUB. CO., Inc.

PUBLISHERS

3 WEST 29th STREET,

NEW YORK

HOTEL DIRECTORY OF OKLAHOMA

Rates quoted are minimum rates. (A) means American plan, (E) European plan. Heavy type indicates hotels having excellent commercial facilities. * indicates hotels having very large sample rooms. Population of each town is given in parentheses. Location of towns upon the map is indicated in brackets. The leading industries are given in the order of their local importance. Total Population of State is 2,028,283.

ABBREVIATIONS.

Ind.—Industrial Town.
Ag.—Agricultural Centre.
Sub.—Suburban Town.
Univ.—University or College.
Min.—Mining or Quarrying.

ADA (8,012); [E2]—Harris (E), \$2.00.

Ind.—Ag.—Min.—Cement, Cottonseed Oil, Corn Mills, Canning, Natural Gas, Lead, Zinc, Rock Asphalt, Glass Sand, Pottery Clay.

ALTUS (4,522); [B2]—Orient (A), \$8.75.

Ag.—Flour Mills, Grain Elevators.

ARDMORE (14,181); [D1]

ARDMORE* (E), \$2.00;

Whittington (E), \$1.50.

Min.—Ag.—Asphalt, Coal, Petroleum, Zinc, Natural Gas, Cotton Market, Cotton Oil Products.

BARTLESVILLE (14,417); [E4]

Maire (E), \$1.50;

St. Clair (E), \$1.50.

Min.—Ind.—Petroleum, Natural Gas, Zinc Smelters, Brick, Glass, Cement.

BLACKWELL (7,174); [D4]—Denton (A), \$8.00.

Ag.—

CHICKASHA (10,179); [C2]

McFARLAND* (E), \$1.50;

Early (A), \$3.00.

Ag.—Flour Mills, Cottonseed Oil Mills, Cotton Gins, Cotton, Corn and Wheat Growing.

CUSHING (6,826); [D4]—Thompson (E), \$1.00.

Min.—Ag.—Cotton, Oil, Gas.

DRUMRIGHT (6,460); [E4]

ROBERTS (E), \$1.50;

Strand (E), \$1.00.

Min.—Oil.

DURANT (7,340); [E1]—Atwood (E), \$1.50.

Ag.—Univ.—Cotton Gins, Hardwood Factory, Lumber Mills, State Normal School, Oklahoma Presbyterian College for Girls.

EL RENO (7,737); [C3]
Southern (E), \$1.00;
Kerfoot.

Ind.—Ag.—Roller Mills, Canning Factory, Planing Mill, Creamery, Foundry and Machine Shops, Railroad Shops, China Factory, Brick, Lumber. Important Shipping Point for Agricultural Products.

ENID (16,576); [C4]
Oxford (E), 1.50;
Billings (E), \$1.00.

Ag.—Ind.—Agricultural Implements, Steel Wire, Flour, Meat Packing, Railroad Shops. Jobbing Center.

GUTHRIE (11,757); [D3]—See Oklahoma City.
Ag.—Ind.—Lumber, Milling, Cotton Gins.

HENRYETTA (5,889); [E3]—Georgian (E), \$1.00.
Ag.—

HUGO (6,368); [F1]—Webb (A), \$3.00.
Ag.—Railroad Shops, Planing Mills, Grain Elevators, Cotton Gins, Cottonseed Oil Mill, Creosote Works.

LAWTON (8,930); [C2]—Midland (A), \$3.50; Keegan (E), \$1.25.
Ag.—Cotton, Oil.

McALESTER (12,095); [E2]—Busby (E), \$1.50.
Min.—Coal, Compress and Oil.

MIAMI (6,802); [F5]
Miami (E), \$1.50.
Ag.—Min.—

MUSKOGEE (30,277); [F3]
HOTEL SEVERS* (E), \$2.00 up; with bath \$3.00 up;
Turner (E), \$1.00;
Ag.—Min.—Univ.—Flour Mills, Cotton Compress, Brick, Railroad Shops. Oil Refining, Agricultural Implements, Oil, Gas, Coal. St. Joseph's College, Oklahoma Woman's College.

NORMAN (5,004); [D3]—Grand Central.
Ag.—

OKLAHOMA CITY (91,295); [D3]
HUCKINS HOTEL* (E), \$2.00 up; with bath \$2.50 up;
Skirvin (E), \$2.00;
Kingcade (E), \$1.50.

Ind.—Ag.—Lumber, Oil, Flour, Railroad Shops, Skirts and Overalls, Printing and Publishing, Machine Shops, Meat Packing.

OKMULGEE (17,430); [E3]—Parkinson (E), \$1.50.
Ind.—Ag.—Min.—Oil Refining, Cotton Gins, Iron Works, Glass, Lumber, Coal, Oil and Gas.

PAWHUSKA (6,414); [E4]
Duncan (A), \$3.50.
Ag.—

PICHER (9,676); [F5]—Connell (E), \$1.50.
Ag.—Oil.

PONCA (7,051); [D4]—Ponca (E), \$1.25.

Ag.—Planing Mills, Refining.

SAPULPA (11,634); [E4]—Sapulpa (E), \$1.50.

Ag.—Min.—Oil, Gas, Glass, Railroad Shops, Brick.

SHAWNEE (15,348); [D3]

Walcott (E), \$1.50.

Ind.—Ag.—Univ.—Cotton Gins, Cottonseed Oil, Flour, Brooms, Brick, Railroad Shops, Meat Packing. Oklahoma Baptist University.

STILLWATER (4,701); [D4]—Nichols (A), \$3.00.

Ag.—

TULSA (72,075); [E4]

TULSA* (E), \$2.50;

THE KETCHUM HOTEL* (E), \$2.00 up; with bath \$2.50 up.

Ind.—Ag.—Min.—Univ.—Autos, Cement Blocks, Cottonseed Oil, Furniture, Glass, Boilers and Tanks, Brick, Powder, Clothing, Oil, Gas, Coal.

VINITA (5,010); [F4]—Cobb (A), \$2.50.

Ag.—

LOCATION AND POPULATION OF CITIES HAVING LESS THAN
5,000 POPULATION

Afton, 1,518 (F4); Alderson, 855 (E2); Allen, 1,377 (E2); Alva, 3,912 (C4); Anadarko, 3,116 (C2); Antlers, 1,842 (E2); Apache, 919 (C2); Arapahoe, 326 (C3); Arnett, 404 (B4); Asher, 370 (D2); Atoka, 2,038 (E2); Avarad, 147 (C4).

Beaver City, 920 (B4); Beggs, 2,327 (E3); Bennington, 951 (E1); Bigheart, 2,099 (E4); Billings, 846 (D4); Bixby, 1,249 (E3); Blanchard, 842 (D3); Bokchito, 627 (E1); Bokoshe, 869 (F3); Boley, 1,154 (E3); Boswell, 1,212 (E1); Boynton, 1,204 (E3); Bridgeport, 294 (C3); Bristow, 3,460 (E3); Britton, 1,070 (D3); Broken Arrow, 2,086 (E4); Broken Bow, 1,983 (F1); Buffalo, 479 (B5).

Caddo, 1,421 (E1); Calvin, 700 (E2); Cardin, 2,640 (F5); Carmen, 792 (C4); Carnegie, 1,150 (C2); Cashion, 296 (D3); Cement, 1,098 (C2); Chandler, 2,226 (D3); Checotah, 2,390 (E3); Chelsea, 1,692 (F4); Cherokee, 2,017 (C4); Cheyenne, 400 (B3); Claremore, 3,435 (E4); Cleveland, 2,717 (E4); Clinton, 2,596 (C3); Coalgate, 3,009 (E2); Collinsville, 3,801 (E4); Comanche, 1,427 (C2); Commerce, 2,555 (F1); Cordell, 1,855 (C3); Covington, 1,283 (D4); Coweta, 1,318 (E3); Crescent, 878 (D3); Crowder, 581 (E3); Custer, 671 (C3).

Davenport, 440 (D3); Davis, 1,609 (D2); Delaware, 804 (E4); Dewar, 1,558 (E3); Dewey, 2,302 (E4); Duncan, 3,463 (C2); Dustin, 713 (E3).

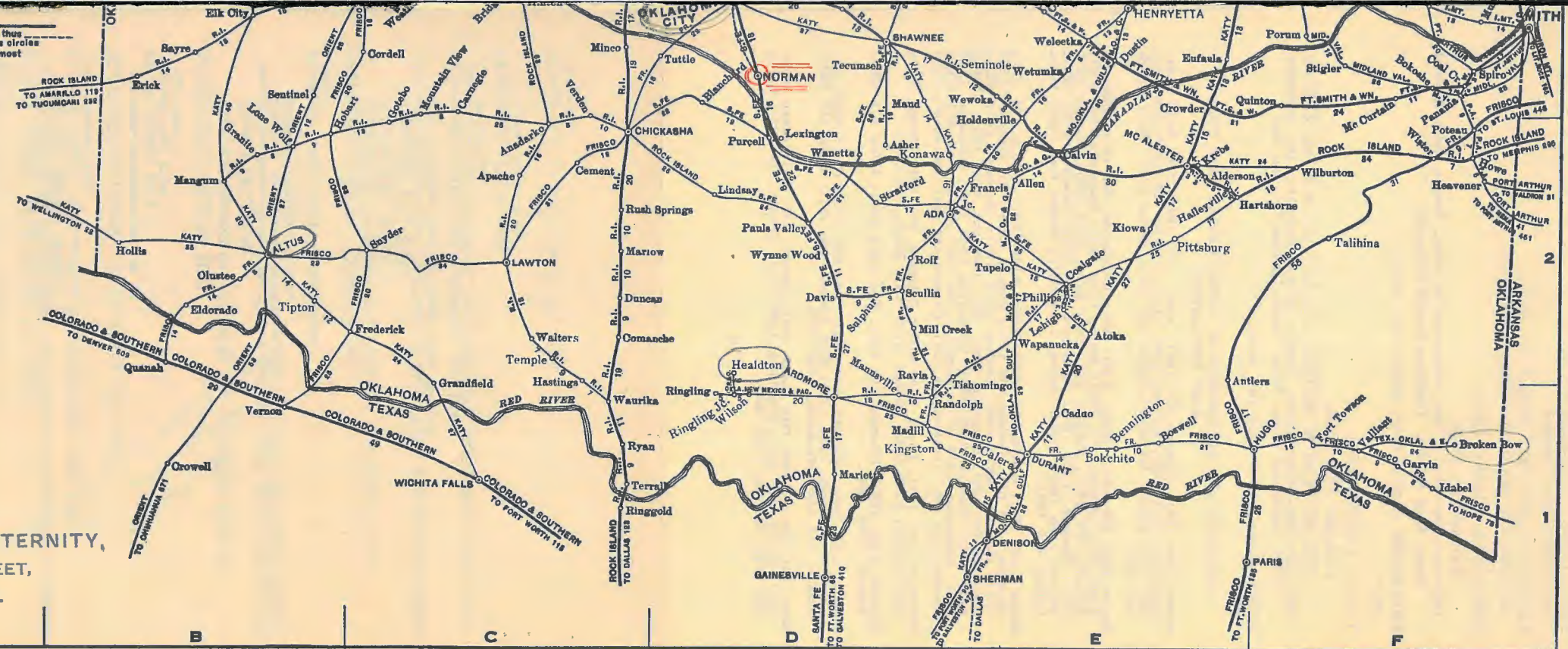
Edmond, 2,452 (D3); Eldorado, 967 (B2); Elk, 2,814 (B3); Erick, 971 (B3); Eufaula, 2,286 (E3).

Fairfax, 1,342 (D4); Fairland, 818 (F4); Fairview, 1,751 (C4); Fallis, 239 (D3); Fort Gibson, 1,353 (F3); Fort Towson, 965 (F1); Foss, 348 (B3); Francis, 911 (E2); Frederick, 3,822 (C2).

Gage, 804 (B4); Garber City, 1,446 (D4); Garvin, 292 (F1); Geary, 1,167 (C3); Gotebo, 787 (C2); Grandfield, 1,990 (C1); Granite, 912 (B2); Grove, 869 (F4); Guymon, 1,507 (A4).

by small letters i.e. Watonga.
Main lines of railroads are shown heavy, thus
Interurban trolleys are shown by broken lines, thus
Suggestion to Travelers: - Enlarge with ink the circles
showing location of towns to be covered; the most
available route will immediately be seen.

ALPHA SIGMA PHI FRATERNITY,
47 WEST 42nd STREET,
NEW YORK, N. Y.



Haileyville, 2,067 (E2); Hallett, 279 (E4); Hartshorne, 3,480 (E2); Hastings, 629 (C1); Healdton, 2,157 (D2); Heavener, 1,850 (F2); Helena, 615 (C4); Hennessey, 1,310 (C4); Hinton, 744 (C3); Hobart, 2,936 (B2); Holdenville, 2,932 (E2); Hollis, 1,683 (B2); Hominy, 2,875 (E4); Hooker, 946 (A5); Howe, 711 (F2); Hydro, 686 (C3).

Idabel, 3,067 (F1); Ingersoll, 218 (C4).

Jenks, 1,508 (E4); Jennings, 910 (E4).

Kiefer, 1,663 (E3); Kingfisher, 2,447 (C3); Kingston, 767 (E1); Kiowa, 1,287 (E2); Kanawa, 896 (E2); Krebs, 2,078 (E2); Kusa, 1,069 (E3).

Lamont, 586 (D4); Lehigh, 1,898 (E2); Lexington, 950 (D2); Lindsay, 1,543 (D2); Locust Grove, 587 (F4); Lone Wolf, 657 (B2).

McCurtain, 1,062 (F3); McLoud, 651 (D3); Madill, 2,717 (D1); Mangum, 3,405 (B2); Mannsville, 639 (D1); Marietta, 1,977 (D1); Marlow, 2,276 (C2); Maud, 637 (D3); Medford, 1,050 (D4); Mill Creek, 620 (D2); Minco, 606 (C3); Morris, 1,926 (E3); Mounds, 1,078 (E3); Mountain View, 917 (C2); Muldrow, 693 (F3).

Navina, 126 (D3); Newkirk, 2,538 (D5); Nowata, 4,435 (E4).

Ochelata, 419 (E4); Oilton, 2,231 (E4); O'Keene, 1,084 (C4); Okemah, 2,162 (E3); Olustee, 665 (B2); Osage, 757 (E4).

Pauls Valley, 3,694 (D2); Pawnee, 2,418 (D4); Perkins, 608 (D3); Perry, 3,154 (D4); Phillips, 972 (E2); Pittsburg, 892 (E2); Pond Creek, 965 (D4); Porter, 597 (E3); Porum, 533 (F3); Poteau, 2,679 (F2); Prague, 1,127 (E3); Pryor Creek, 1,767 (F4); Purcell, 2,938 (D2).

Quinton, 1,557 (F3).

Ralston, 703 (D4); Ramona, 793 (E4); Ravia, 513 (D2); Red Fork, 844 (E4); Ringling, 1,039 (D1); Ripley, 406 (D4); Roff, 1,138 (D2); Rush Springs, 768 (C2); Ryan, 1,379 (C1).

Sallisaw, 2,255 (F3); Sand Springs, 4,076 (E4); Sayre, 1,703 (B3); Seminole, 854 (E3); Sentinel, 723 (B3); Shamrock, 1,409 (E3); Shattuck, 1,365 (B4); Skiatook, 1,653 (E4); Snyder, 1,197 (C2); Sparks, 472 (D3); Spiro, 1,162 (F3); Sterrett, 703 see Calera (E1); Stigler, 1,797 (F3); Stilwell, 1,155 (F3); Stratford, 964 (D2); Stroud, 1,361 (E3); Sulphur, 3,667 (D2).

Tahlequah, 2,271 (F3); Talihina, 690 (F2); Taloga, 365 (C4); Tecumseh, 1,429 (D3); Temple, 906 (C2); Terral, 506 (C1); Texhoma, 687 (A4); Thomas, 1,223 (C3); Tipton, 727 (B2); Tishomingo, 1,871 (E2); Tonkawa, 1,448 (D4); Tupelo, — (E2); Tuttle, 590 (D3).

Valliant, 809 (F1); Verden, 496 (C2); Vian, 1,176 (F3).

Wagoner, 3,436 (F3); Walters, 3,032 (C2); Wanette, 783 (D2); Wapanucka, 1,038 (E2); Watonga, 1,678 (C3); Waukomis City, 463 (C4); Waurika, 3,204 (C1); Waynoka, 1,500 (C4); Weatherford, 1,929 (C3); Welch, 696 (F5); Weleetka, 1,588 (E3); Wellston, 650 (D3); Westville, 956 (F4); Wetumka, 1,422 (E3); Wewoka, 1,520 (E3); Wilburton, 2,226 (F2); Wilson, 2,286 (D1); Wister, 586 (F2); Woodward, 3,849 (B4); Wynnewood, 2,200 (D2); Wynona, 2,749 (E4).

Yale, 2,601 (D4); Yukon, 1,016 (D3).

HOTELS OF OTHER STATES

AUSTIN, TEX.

DRISKILL HOTEL* (A), \$4.50 up.

CISCO, TEX.

HOTEL GUDE* (E), \$1.50-\$3.00.

FORT WORTH, TEX.

WESTBROOK HOTEL* (E), \$2.00 up.

LITTLE ROCK, ARK.

HOTEL MARION* (E), \$1.50 up.

SAN ANTONIO, TEX.

GUNTER HOTEL* (E), \$1.50-\$5.00;

TRAVELERS HOTEL* (E), \$1.50 and \$2.00.

SHREVEPORT, LA.

THE TULLOS* (E), \$2.00 up.

WICHITA FALLS, TEX.

KEMP HOTEL* (E), \$2.00 up.

LEGAL HOLIDAYS OF OKLAHOMA

January 1st—New Year's Day.

February 22nd—Washington's Birthday.

(April 16th, 1922; April 1st, 1923—Easter Sunday).

May 30th—Decoration Day.

July 4th—Independence Day.

September 4th, 1922; September 3rd, 1923—Labor Day.

November 7th, 1922; November 6th, 1923—General Election.

November 11th—Armistice Day.

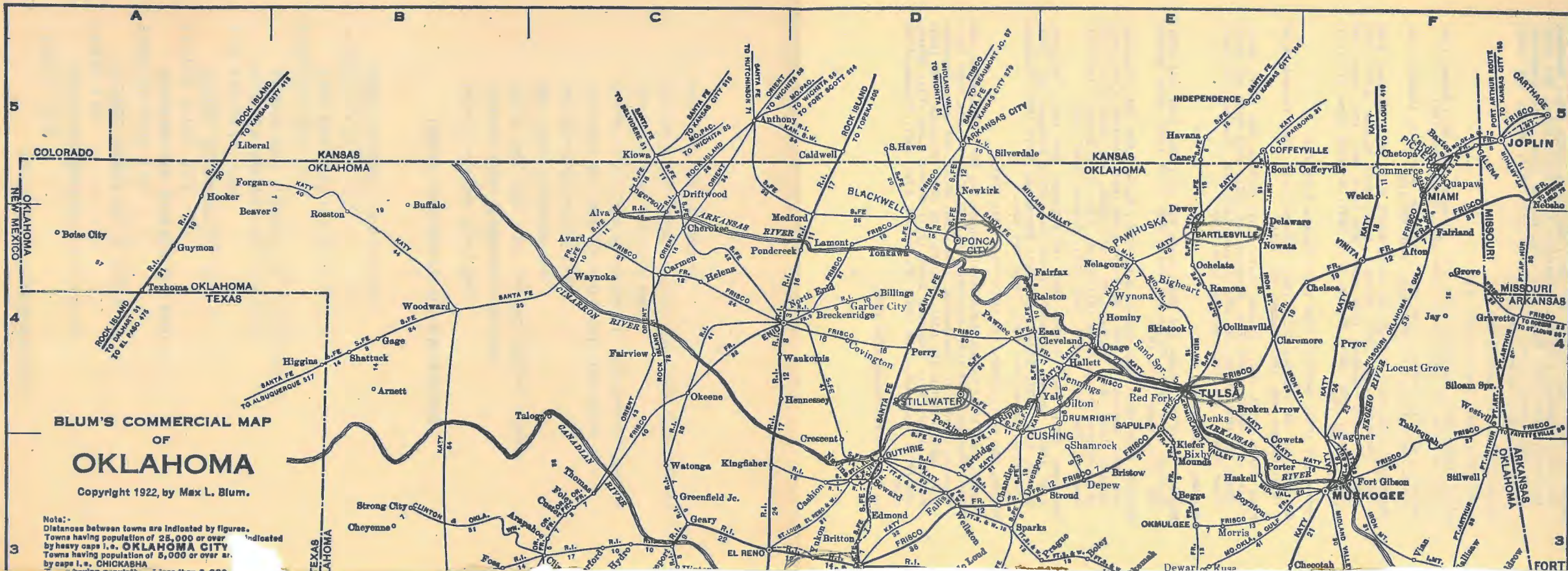
November 30th, 1922; November 29th, 1923—Thanksgiving.

December 25th—Christmas.

BLUM'S COMMERCIAL MAP
OF
OKLAHOMA

Copyright 1922, by Max L. Blum.

Note: -
Distances between towns are indicated by figures.
Towns having population of 25,000 or over
by heavy caps i.e. OKLAHOMA CITY
Towns having population of 5,000 or over are
by caps i.e. CHICKASHA



RAILROAD FARE

Passenger Rate is 3.6 cents per mile.

BAGGAGE INFORMATION

Size of Trunks.—Trunks must not exceed 72 inches in any one dimension.

Weight of Trunks.—Trunks must not exceed 250 pounds in weight.

Excess Baggage.—Minimum amount of charge for carrying more than 150 pounds weight is 30 cents.

Minimum rate per 100 pounds excess is 18 cents.

Rate per 100 pounds of excess is one-sixth of cash fare.

For every inch above 45 inches in any one dimension of trunk 5 pounds additional excess is charged.

Lost Baggage.—Railroad is liable for maximum value of \$100.00, unless passenger declares value in excess of \$100.00. Upon such declaration the railroad charges 10 cents for each additional hundred dollars of valuation or fraction thereof, assuming full liability for loss.

Publisher's Note:—Commercial Travelers' Maps of other states may be obtained at all stationers, bookshops, hotel news-stands, railway news-stands, or direct from the publisher.

PRICE 25 CENTS PER COPY

BLUM'S COMMERCIAL MAP PUBLISHING CO., Inc.

3 West 29th Street

New York

MAP SUGGESTIONS

To Lay Out a Route—Ink in circles showing the location of towns to be covered, the most available route will immediately be seen.

To Show Division of Sales-Territory—Fill in these circles with ink of different color, red indicating Smith's territory; green Jones' territory, etc.

Indicate sales-status of towns thus:

Red, towns having very active accounts.

Green, towns having active accounts.

Blue, towns having slow accounts.

Black, towns having no account, but which should have.

Good Railroad Service—(3 or more trains in each direction daily, also express trains), is indicated by heavy lines.

To compute time of travel, estimate as follows:

Local trains25 miles

Express trains30-35 miles

Local Interurbans20 miles

Limited Interurbans25 miles

The publishers request suggestions or criticisms from the traveling public. If any hotels mentioned in the hotel directory are not of the highest class in their respective localities, or do not adhere to rates quoted, kindly so inform us.

Blum's Commercial Map Pub. Co., Inc.
3 West 29th Street New York

OKLA Δ K P

ALPHA SIGMA PHI FRATERNITY

47 WEST 42ND STREET
NEW YORK

OFFICE OF THE
EXECUTIVE SECRETARY

December 9, 1922.

Mr. Robert Harrington, HSP
Gamma Chapter, Alpha Sigma Phi,
85 Pleasant Street
Amherst, Mass.

Dear Brother Harrington:

Herewith, I transmit to you by order of the Grand Prudential Committee, a petition to Alpha Sigma Phi from Delta Kappa Rho, a local at the University of Oklahoma of Norman, Oklahoma, together with copies of letters of recommendation from the Grand Senior President, the Grand Junior President, and the Grand Prudential Committee.

You and your chapter are asked to give the petition careful consideration and to take action thereon as early as convenient after which you will immediately transmit to this office the result of your action.

A majority vote of the number of active members present at the meeting at which action is taken will be favorable to the petition; less than a majority will reject it.

Kindly use the official blank provided upon which to record the vote of your chapter.

Fraternally yours in the M. C.,

Chas. F. Hall,
Executive Secretary.

The above letter sent to each HSP of each chapter, per names on reverse side.

E. B. Shotwell,
Alpha Chapter

J. R. Pratt

Rho Chapter

W. F. Lewis,
Beta Chapter

J. F. Dahzinger,
Sigma Chapter

E. H. Schafer
Delta Chapter,

M. C. Simpson
Tau Chapter

C. J. Thomas
Epsilon Chapter

R. M. Swift
Upsilon Chapter

F. W. Messer
Zeta Chapter

J. R. Redditt
Phi Chapter

LaVerne Rapp
Eta Chapter

Porter Burleigh
Chi Chapter

President (No Name)
Theta Chapter

R. E. Anderson
Psi Chapter.

H. B. Glathe
Iota Chapter

Lucius Chase
Kappa Chapter

R. J. Rickenbecher
Lambda Chapter

Hilding Johnson
Mu Chapter

President (No name)
Nu Chapter

President (no name)
Xi Chapter

L. A. Brunner
Omicron Chapter,

C. F. Weingand
Pi Chapter

ALPHA SIGMA PHI FRATERNITY

OFFICE OF THE
GRAND JUNIOR PRESIDENT
51 CHAMBERS STREET
NEW YORK

120 Broadway

To the Chapters of Alpha Sigma Phi Fraternity:

Greetings:-

Herewith I submit to you the petition of Delta Kappa Rho, from the University of Oklahoma, together with letters of recommendation from Professor Ivan G. Wright, Daniel W. Hogan, Jr., Victor Stangel, and Professor C. O. Applegran, all members of our Fraternity whose reports I am accepting in lieu of a special investigating committee, and this with the approval of the Grand Prudential Committee whom I have consulted concerning this method of handling this situation.

The University of Oklahoma is one of the accredited Institutions whose academic standing no one can question.

The fraternity situation at Oklahoma is not over done. In fact, there is a decided demand for more fraternities there, and the conditions spell success for the new chapter.

Delta Kappa Rho, you will find from their statement on Page 11, would seem to be in a moribund financial condition, but this is hardly more than a book-keepers statement. Their resources are as they have stated \$5,147.32, but their liabilities are somewhat like a corporation's liabilities, that is put on the books for stock which is never refunded or bought back, so that they are really a little more than \$5,000.00 to the good.

Regarding the personnel of the petitioners: I think there is no question as to their personal, social and academic standing, and their endorsements from the University President down to the Student Council strikes me as showing that they have the local backing of their associates in the University, who would like to see them admitted to our Fraternity.

It is, therefore, my great pleasure to submit this petition to you with the recommendation that it receive your enthusiastic, prompt and vigorous approval.

Yours in Alpha Sigma Phi,

Wayne M. Musgrave
G.J.P.

New York, November 15th, 1922.

O F F I C I A L B A L L O T

Petition of the Delta Kappa Rho Fraternity to Alpha Sigma Phi
Fraternity for the purpose of Establishing a chapter at
the University of Oklahoma - Norman, Oklahoma.

- - - - -

The Executive Secretary,
Alpha Sigma Phi Fraternity,
47 West 42nd Street,
New York, N.Y.

Dear Brother:

Our Chapter has given thorough and careful consideration to
the petition of the Delta Kappa Rho Fraternity for a charter in
order to establish a branch of our Fraternity at the University of
Oklahoma in Norman, Oklahoma.

At a regular meeting of this Chapter held on the _____
day of _____, 1922, at which a quorum was present,
_____ Chapter of $\Delta \Sigma \Phi$ voted as follows upon the
said application of Delta Kappa Rho:

_____ members were in favor of the application, and
_____ members voted to reject the petition, there
being _____ active members present.

Fraternally yours in the Mystic Circle,

_____ Chapter, $\Delta \Sigma \Phi$

_____ H. S.

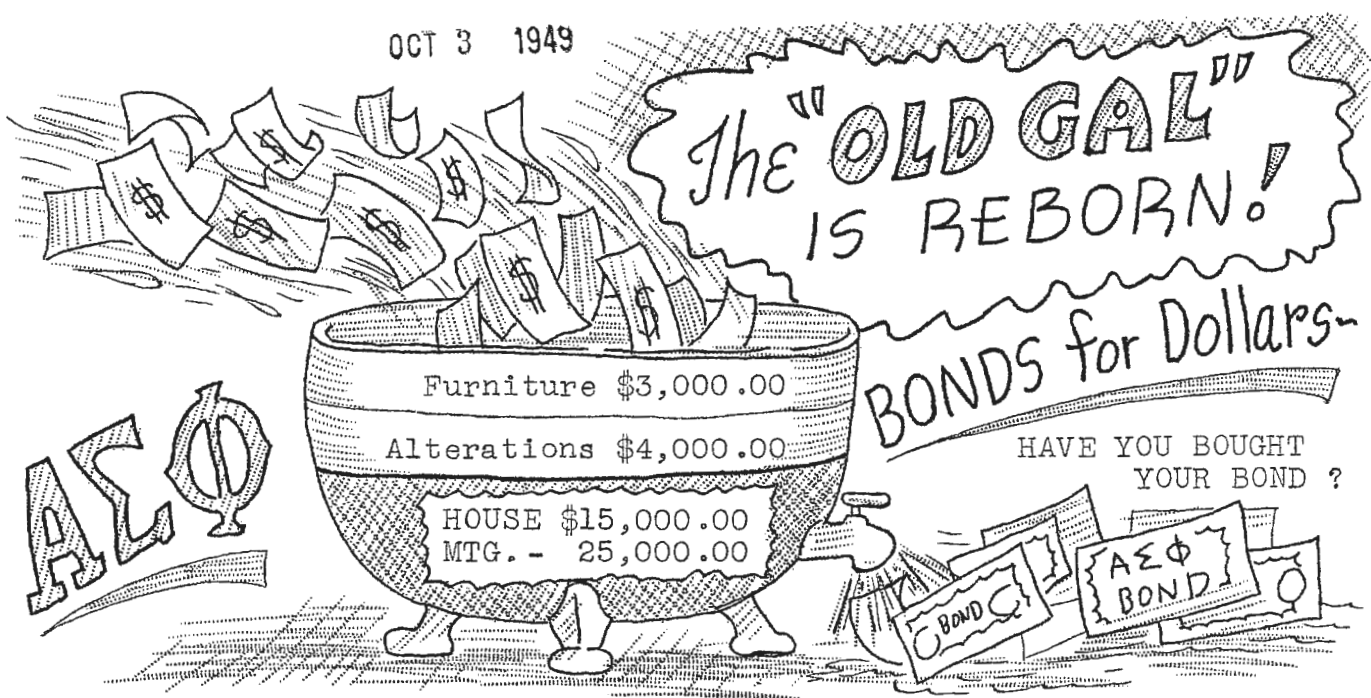
_____ H. S. P.

Data on vote
Petition of Δ K P (Okla.)

	Chapter	Date Ballot was Received:		Remarks: —			
		YES -	NO -	Yes	No	Total Present	Voted on:
17	Alpha	JAN 19 1923		35	0	35	12/14
8	Beta	DEC 22 1922		20	0	20	12/19
1	Gamma	DEC 13 1922		18	0	18	12/11
4	Delta	DEC 20 1922		17	4	21	12/18
10	Epsilon	DEC 22 1922		17	0	17	12/18
5	Zeta	DEC 21 1922		24	0	24	12/18
6	Eta	DEC 21 1922		27	0	27	12/18
14	Theta	JAN 20 1923		27	0	27	1/10
23	Iota	APR 25 1923		24	0	25 (1 not voting)	4/23
7	Kappa	DEC 21 1922		28	0	28	12/18
3	Lambda	DEC 19 1922		25	0	25	12/18
13	Mu	DEC 27 1922		28	0	28	12/20
20	Nu	JAN 23 1923		27	0	27	1/15
21	Xi	JAN 24 1923		19	0	19	12/18
2	Omicron	DEC 18 1922		33	0	33	12/15
14	Pi	JAN 13 1923		28	0	28	1/8
15	Rho	JAN 15 1923		26	0	26	1/8
9	Sigma	DEC 22 1922		17	0	17	12/13
12	Tau	DEC 26 1922		19	0	19	12/18
18	Upsilon	JAN 20 1923		20	0	20	1/15
22	Phi	FEB 8 1923		20	0	20	1/8
11	Chi	DEC 22 1922		23	0	21 (?)	12/20
16	Psi	JAN 15 1923		22	1	23	1/8
✓	-	23	0	544 - 5		548	✓

This petition unanimously passed when the 23rd vote came in from Iota APR 25 1923.

OCT 3 1949



Hi Sig! -

HAVE YOU HEARD!, Alpha Alpha has a new home at Norman.
Alpha Alpha has 31 fine new pledges.
Alpha Alpha has a baby grand piano and 5 musicians.
Alpha Alpha has a fine active Auxillary who helped
serve during rush week. - Thanks girls!
62 Alumni pledged to buy \$16,200.00 in bonds or an
average of \$261.00 per man.

Your Housing committee has worked out a new policy and plan of operation, the alumni own the house and lease it to actives, there will be a 30 day audit by an outside accounting firm. Thanks to brother John Pearson.

Your legal staff, headed by Brothers Ed Smith and Howard Davis and Cal Boxley have given their time, efforts and money to make this venture a success. They are doing a swell job - Thanks Boys!

Your Total sale of bonds (\$16,200.00) won't get the job done. You need to raise about \$6,000.00 More. You can subscribe and pay it over a 6 months period.

Your Brothers who have subscribed, PLEASE mail your money as soon as possible, It saves a lot of time and book work.

Your Bonds are being prepared - Remember they are 4% Bonds.

Your New Home played a big part in getting pledges. 'Tis said, "The outstanding pledge class at O.U." Convince yourself, Go take a look!.

Your 62 Brothers who have bought Bonds are - - -

Howard Davis
Earl Hassler
J.O. Hassler
G. A. Fisher
Louis Barnett
Vic Wood
Harrell Bailey
Steve King
John G. Matt
Mary Louise Squyres
Wm. H. Atkinson
Hugh D. Stites
E. L. Shaw
Ray Reeves
E. C. Payne
Joe Smalley
John Pearson, Jr.
Tom Ashton
Geo. E. Phelps
Curtis Berry
J. Fleet

Robt. Breeden
C. M. Hodgson
Robt. I. Morrison
Virgil Sprinkle
J. B. Miles
Owen Townsend
H. H. Link
Chas. C. Miles
D. K. Bishop
Mary Jo Grooms
Chas. McPherren
G. A. McCracken
N. A. Hassler
Gordon Richards
Leslie McGee
Al Mager, Jr.
A. O. Johnson
Leland Snow
Karl Kroeger
Clyde Kirk
L. Shippy

Calvin Boxley
Marvin Goodner
R. W. Carson
J. W. Boone
George Gay
Edward Smith
Irvin Vogel
Foster P. Boggs
James R. Holbird
Dr. Casey Childs
A. H. Cerney
Roger T. Blake
Warren Welch
A. A. York
J.M. Robertson
Elmer Streich
Jack K. Kohler
Wayne Barbour
R.C Longmire
A.S.P. (AA)
H. Loony

If you do not see your classmate's name in the above list, call him and find out Why. I know you all want to do your share and be among those who gave ALPHA ALPHA a Chance to Be Reborn, So Don't Put Off - DO IT NOW! Send that pledge or money to Treasurer Al Mager, TODAY.

Alpha Sigma Phi



Alpha Alpha Chapter
University of Oklahoma

The Purposes for which
ALPHA SIGMA PHI FRATERNITY
is formed are:

- TO FOSTER education, to maintain charity,
to promote patriotism,
- TO ENCOURAGE culture, to encourage high
scholarship,
- TO ASSIST in the building of character, to
promote college loyalties,
- TO PERPETUATE friendships, to cement social
ties within its membership,
- AND TO FOSTER the maintenance of college
homes by chapters for their active mem-
bers.

A Letter From The President



T. J. Johnson
President



Clayton Nichols
Vice-President



Mike Mitchell
Rush Chairman

Alpha Sigma Chapter
Alpha Sigma Phi
602 W. 80TH STREET
UNIVERSITY OF OKLAHOMA
Norman, Oklahoma



Dear Rushes,
You are taking one of the most important steps in a young man's life when you enter college and fraternity life this year. You have selected a first-rate university with first-rated fraternal organizations.

We of Alpha Sigma Phi believe that a fraternity is an integral part of a well-rounded college life for you. You will form life-long friendships in your fraternity and your choice of a fraternity should be made with the greatest of consideration.

Alpha Sigma Phi was founded in 1845 with the high purpose—"To Better the Man." Alpha Alpha chapter at the University of Oklahoma is continually striving to accomplish this purpose. With this as its purpose, Alpha Alpha has continued to grow throughout the years and maintain its excellent standing. Even more important, each member of the fraternity has become a more well-rounded individual.

Membership in Alpha Sigma Phi Fraternity is a privilege granted on invitation by the members to a man who is personally, intellectually, and socially compatible with the members of the Fraternity, and thereby worthy of the name of Alpha Sigma Phi.

Alpha Alpha of Alpha Sigma Phi Fraternity is sincerely looking forward to seeing you this summer and during rush week. We hope that during your college career and afterwards the men of Alpha Sigma Phi will be among your firmest friends.

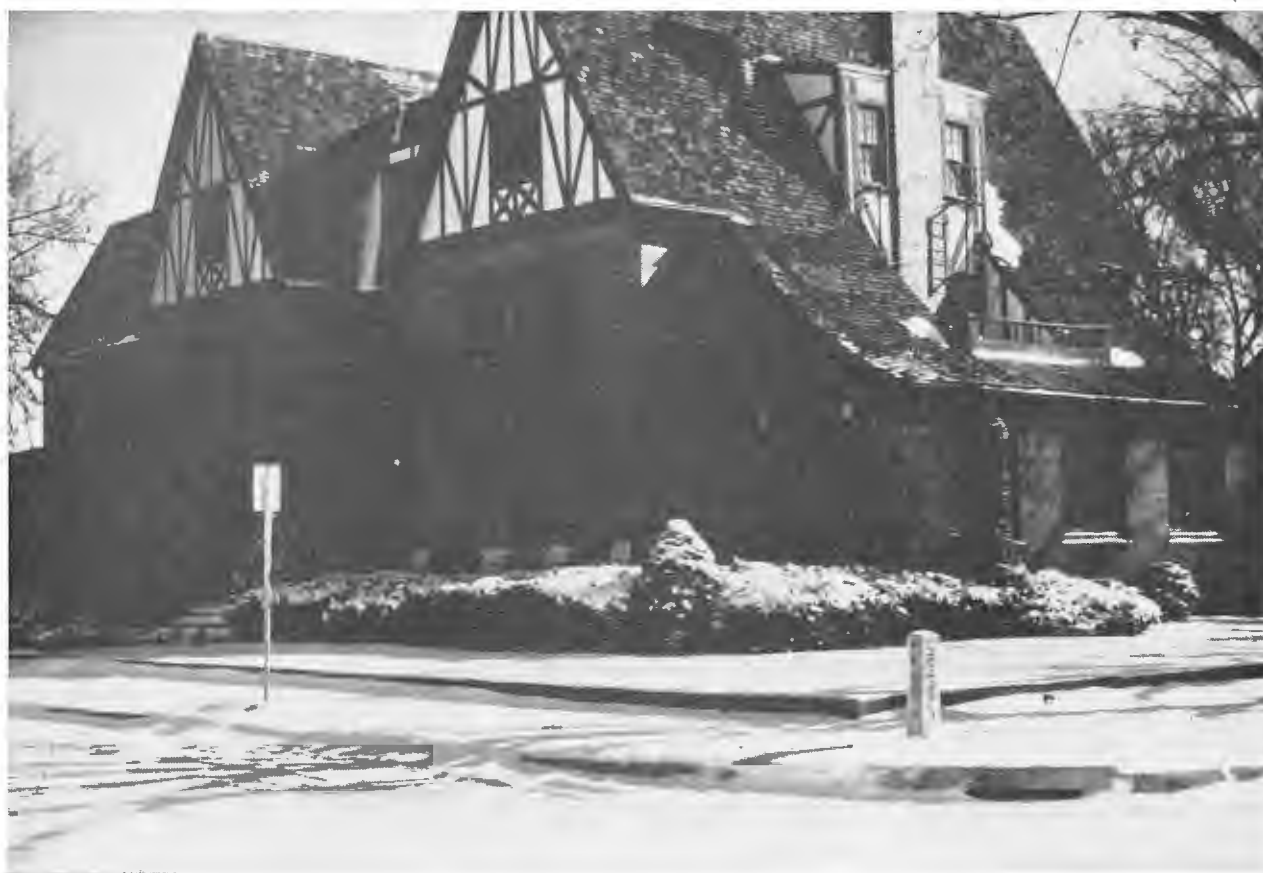
Sincerely yours,
T. J. Johnson
President



Mrs. Charles Ball
Housemother

"To Better The Man"

Alpha Alpha of Alpha Sigma Phi



602 West Boyd

Scholarship



Hours of study bring honor of O.U. moot court team representative to Tom Nelson, far left.

"To foster education . . . to encourage high scholarship," are the primary purposes of the college man as well as one of the basic principles expressed in the purposes of Alpha Sigma Phi. The university exists to foster education and the student must devote himself to the task of learning, taking full advantage of the opportunities which are offered him. The maintenance of a high scholastic standing was one of the basic reasons for the founding of Alpha Sigma Phi in 1845 and remains of first importance in Alpha Alpha chapter today. Recognizing that scholarship is of foremost importance in college and fraternity life, Alpha Alpha of Alpha Sigma Phi has developed a well-rounded program to assist both members and pledges in scholastic endeavors.

The chapter has developed a program with particular emphasis toward teaching the freshmen proper study habits. It is designed to enable the student to make the change from high school to college as smoothly as possible. The carefully planned program teaches the freshman correct study habits which help him to make the best use of his time. A supervised study hall is held at the chapter house throughout the entire year which provides him with the opportunities both to acquire these habits under careful supervision and to obtain help from members in the house who excel in certain fields. Several members of the university faculty are alumni of Alpha Sigma Phi and they are always willing to assist in any way they can. Alpha Sigma Phi has always been represented in the various honorary scholastic organizations on campus including Phi Beta Kappa, Phi Eta Sigma, Tau Beta Pi, Beta Gamma Sigma, Omicron Delta Kappa, and Pe-et. Alpha Sigma Phi ranks consistently among the top of the twenty-five fraternities and above the all-men's and all-fraternity grade average.

For the year, Alpha Sigma Phi ranked among the top ten fraternities. The first semester pledge class ranked in the top seven pledge classes. Alpha Sig's scholastic record is one that few fraternities can surpass.



Max Claiborne, 42, outstanding O.U. basketball player, is a symbol of the "all-around man" Alpha Sig strives to develop.



Dick Corbitt, O.U. guard, greets ex-President Harry S. Truman at "Big Red" football game.



The Alpha Sig Glee Club.

Sigs on Campus

Since the founding of Alpha Alpha chapter on the University of Oklahoma campus, the Alpha Sigs have been among the leaders in participation in campus activities. We feel that the experience of working together on worthwhile projects will greatly benefit the college man now and in later years. One of the most important attributes gained from a fraternity is the ability to work together. This is learned quickly in Alpha Sigma Phi through the group participation in campus activities.

In the past the Alpha Sigs have participated in such group activities as Sooner Scandals, Intramural Sports, Homecoming Decorations, All-University Sing, Mother's Day, Dad's Day and Greek Week and we intend to continue this well rounded program of group activities in the future.



Hugh interviews Dave Garroway.



Homecoming is a Hit

Yale 1845

ALPHA SIGMA PHI . . . from 1845 to the present

Few indeed are the fraternities of the nation that have as interesting and significant a history as that of Alpha Sigma Phi. As one of the oldest fraternities in the nation, she has been held in high esteem by generations of college men. Alpha Sigma Phi has contributed markedly to the colleges and universities where it has placed its chapters.

It was December 6, 1845, when three college freshmen met on the campus of Yale University to found Alpha Sigma Phi. Their youthfulness belied the seriousness of their purpose, but Louis Manigault, Stephen Ormsby Rhea, and Horace Spangler Weiser were laying the foundations of the Fraternity which was to exceed even their fondest dreams.

There existed on the Yale campus at the time, a system of class societies or fraternities. The freshmen belong to a freshman society, the sophomores to a sophomore society, and so forth, so that it was possible for a man to belong to four different societies during his college career. Alpha Sigma Phi was a sophomore fraternity. In 1864 the faculty at Yale suppressed the chapter there, but the loyalty to the Fraternity was so strong that even though it meant expulsion from the college if discovered, the members merely took the name of Delta Beta Xi, maintaining in secret the old traditions and rituals of Alpha Sigma Phi.



Alpha Sigs coast to coast . . . Eta Chapter at University of Illinois.



"Tomahawk," oldest national fraternity magazine in existence.

1845 is indeed an important date in our history; for our century-old heritage and our place as the tenth oldest fraternity of the undergraduate, social, Greek-letter world hinge upon this date.

The strength of the Fraternity comes not only from its rich heritage and its century of growth; it comes primarily from the caliber of its membership. Alpha Sigma Phi has consistently pledged and initiated the men whose ideals, character, personality, and leadership have made them worthy of the Mystic Circle; and these Brothers, both within college and out, have provided the excellent reputation which Alpha Sigma Phi Fraternity enjoys today.

. . . O. U. 1959

It's Party Time



The Alpha Sigs' Bayou Bounce is one of the biggest costume parties on campus!



Spring brings the annual Talisman Rose Formal.



Fraternity party + Sorority girl = sly grin.

at O. U. . . .



"It's all right, she's with me!"



Wow! Just another Alpha Sig tradition.

So Let's Have A Party!



Judith Corbitt is our Talisman Rose Queen.



What kind of a party is this? Just a little fun after study hours!

Life At The Alpha Sig House

Alpha Sigma Phi is a social fraternity and social events play an important part in the activities of each year. We feel that social development is an important phase of the development of every young man. The Alpha Sigs are known all over the campus for their many parties.

The Alpha Sigs believe that all work and no play really does make Jack a square, and have worked out a well-balanced program of both work and play. Every Friday night the club room at the chapter house is available for dancing, informal house parties are frequent events and Sunday night dinners with our dates are a regular feature.

The social season is started with the Victory Party. The Victory Party is held at the conclusion of Rush Week in the club room at the chapter house. At the Victory Party the pledges get their first real glimpse of fraternity life and begin to really feel a part of things. The Mad Hatter's Ball, a costume party held in October, is the next big social event. The Christmas season is begun with a house-decorating party and then the Christmas Formal which is held at an Oklahoma City Country Club. The Founder's Day Banquet also comes in December and is observed by all the chapters of Alpha Sigma Phi throughout the nation.

The first big party held during the second semester is the annual Talisman Rose formal. An election is held to select the Talisman Rose Queen who will reign for the coming year. The Bayou Bounce, a costume party in New Orleans style, is the second big party of the spring term. The house is decorated as a swamp with Spanish moss which is imported from New Orleans. The final big party of the year is the Sig Bust. The Sig Bust, which is sponsored by the Alumni Association, is a traditional party with every Alpha Sig chapter. It is a Spring Formal giving an appropriate climax to the year's social activities.

Work — Play! . . .



*After a long week of studying, at last . . .
Saturday night!*



Gordon Roesler, Perry, an N.C.A.A. champ on Oklahoma's famous wrestling team.

SIGS ON THE VARSITY

This year's Big Red team included three Alpha Sigs. Left, Dick Corbitt (74), reaches up to block a pass as brother Jim Lawrence (92) does line work.



. . . Sports

No program is complete without athletic competition. The Alpha Sigs participate fully in the intramural program of the university and supplement this with action within our group.

One of the highlights of the year is the annual pledge-member football game which is followed by the members being feted by the pledge class or, in other words—the losers. Similar battles are held upon the basketball court and the baseball field.

Last year the Sigs had teams in the football and basketball playoffs as well as in other sports such as table tennis and golf.

Tom Nelson, Dave Lard, and Stan Messer played in the Bronze Shoe Classic held annually between the Greeks and the Independents. Tom Nelson served on the University Intramural Board and the IFC Intramural Board as well as being the Alpha Sig Intramural Chairman.

Next year will see the Sigs looking forward to even greater successes, not being satisfied to rest upon the victories of the past.

Pledge Life at Alpha Sig

Alpha Sigma Phi takes the first step toward its goal—"To Better the Man"—by offering its pledges a well-balanced pledge program which is planned to both integrate the pledge with the fraternity and educate him in the art of fraternal living. The period of pledgship is the period when the basic principles and ideals of the fraternity are learned. The Alpha Sig pledge program has been developed through the years maintaining the proper balance between scholastic and social emphasis.

The pledge learns the history and traditions of the national fraternity and Alpha Alpha chapter. He becomes more familiar with the Greek system as a whole, both nationally and at O.U.

Proper social behavior is learned through instruction from the housemother and from practical experience. The pledge class has social functions of its own and, of course, it is included in all the regular fraternity social functions. These activities not only provide the fun and recreation which is necessary for well-balanced living, but they serve as the training ground for social graces. The pledge parties and especially the traditional pledge walkout will be among the most memorable times had during your college career.

Leadership is another area in which the pledge program of Alpha Sigma Phi offers valuable training. The pledge class is organized with officers selected from among the pledges. Every pledge is given a chance to serve in some capacity



Russal enjoys pledge-member "Space Party"

such as on any one of the various committees which plan the activities of the group. Through these offices the pledge learns to accept responsibility and to work in close cooperation with others.

The pledge duties which are assigned to be done by the pledge help him to learn respect for the chapter house and other property belonging to the group as a whole. The Big Brother system is planned to give any special help which the pledge might need.

Alpha Sigma Phi offers its pledges a well-rounded program designed in every way to benefit the pledge. Your days of pledgship are sure to be among the most memorable of your college career.

Our Vision of the Future



In 1923, just thirty-six years ago, the twenty-fifth chapter of Alpha Sigma Phi was chartered at the University of Oklahoma. The men who founded it carried with them many dreams, hopes, and ambitions for their young chapter. Throughout the years these dreams and ambitions have served as guideposts for Alpha Alpha. Even today she has one of the brightest futures of *any* fraternity on the University of Oklahoma campus. Very shortly construction will begin on a new three-hundred-thousand dollar chapter house, which when completed will be one of the most outstanding fraternity houses in the Southwest. It's modern, clean-cut, contemporary design will exemplify the character of the men it represents. It will stand as a symbol of consistent advancement, and will demonstrate that the men of Alpha Sigma Phi never rest on the laurels of the past but are always looking towards the future. To Alpha Sigs it will be more than just a new fraternity house, it will be the realization of a dream.



THE men of Alpha Sigma Phi have thoroughly enjoyed fraternity living at the University of Oklahoma for thirty-four years. The fraternity feeling can't be explained, the worth of the life can't be evaluated by anyone except by those men who have worn the cardinal and the stone. This manual presents but a brief picture of our life here. These are only the big points. The little things we know as fraternity life are seen only when one lives within the halls of the "Old Gal."

A bull-session in a crowded room, a talk on the front porch before dinner, a bridge game with Mother Ball, a guest from another chapter for the week end, the joy of an initiation; these are the things which are the most difficult to convey, but out of which develops a feeling that makes Alpha Sigma Phi part of a young man. The finest years of your life are spent in the presence of the finest friendships imaginable—this is Alpha Sig, *good men bound in good fellowship.*