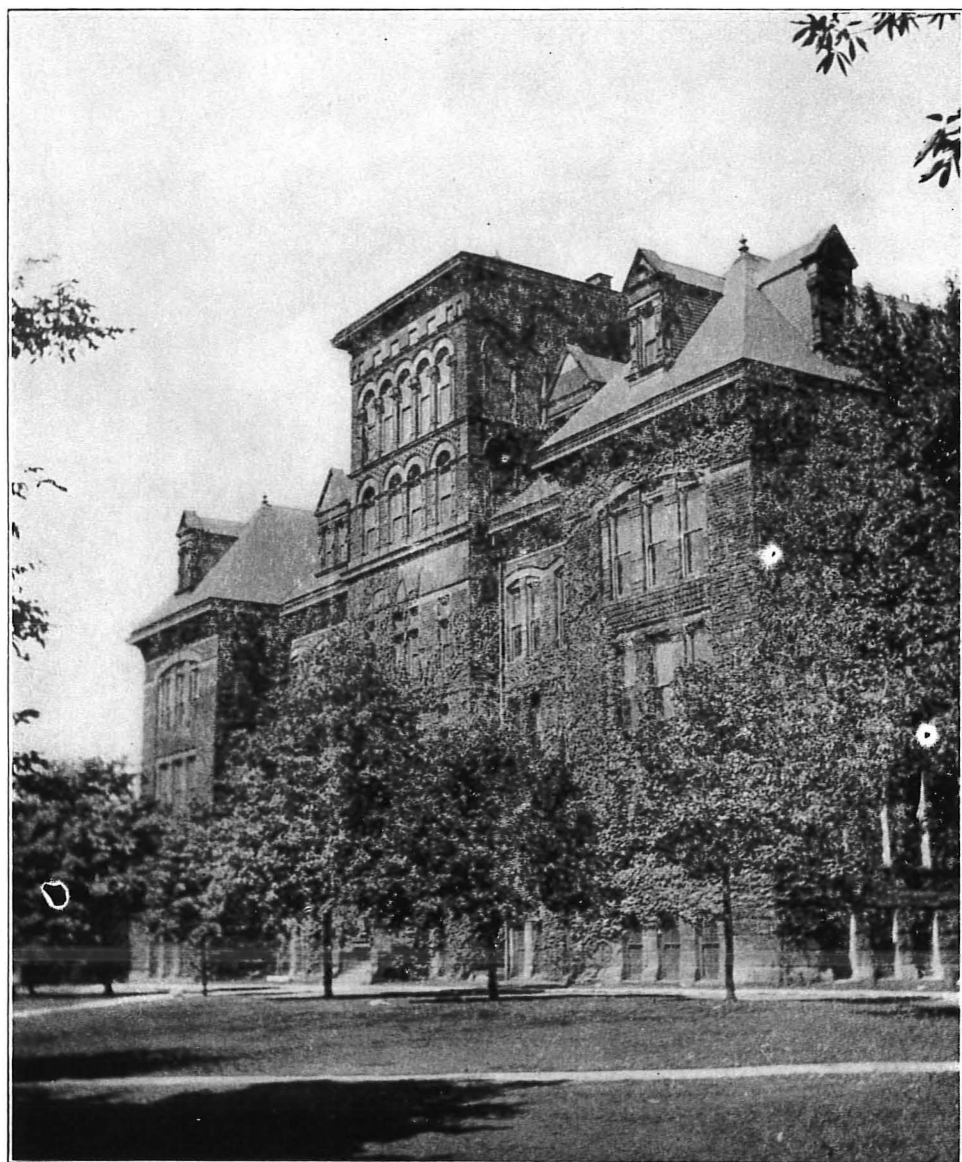


A
Petition
of
Tau Delta Tau

Case School of Applied Science
to
Alpha Sigma Phi





PETITION

BELIEVING ALPHA SIGMA PHI FRATERNITY to have for its ideals a high standard of scholarship and good fellowship as well as a firm moral standing, we the undersigned members of TAU DELTA TAU having similar ideals, respectfully request ALPHA SIGMA PHI to establish a chapter at Case School of Applied Science, Cleveland, Ohio.

Should such a chapter be granted we hereby swear to uphold the constitution of ALPHA SIGMA PHI at all times and be loyal to her forever.

Neff T. Dietrich, President
Paul M. Savage, Vice President
William F. Billingsley, Secretary
Horton Keith Curtis, Treasurer
Hoy Stevens
Fredrick Wm. Bayne
Henry W. Campbell
Cedric Paul Faubel
Russell C. Fish
Kenneth C. Griggs
Stephen Edward Tracey
John Edward Werner
Arthur Herbert Wicks
Otto Z. Klopsch
Harry Barker Wherry
Homer Carl Kaske
Morris Lee Rask
Oscar Wm. Torreson
Robert L. Zahour
Horace D. Fitzgerald
Norman E. Gertz
Andrew L. Janes
Lawrence E. Tompkins
John Victor Johnson
Marcus A. Monaghan
Paul F. Pfau
Adna R. Mohr
Leo Wm. Hebel
George Chas. Graf
Howard J. Fahrney
Harry O. Lovejoy
Oliver E. Haserodt
Wm. M. Sutcliffe
Carlyle I. Hanks

AN EXPLANATION

TAU DELTA TAU, a local fraternity established at Case School of Applied Science, Cleveland, Ohio, on April 17, 1922, is virtually Delta Chapter of Theta Tau, a national professional engineering fraternity. However, it has been deemed inadvisable to petition Alpha Sigma Phi in the name of Delta Chapter of Theta Tau, so the name Tau Delta Tau was assumed expressly for the purpose of petitioning Alpha Sigma Phi for the establishment of a chapter at Case School of Applied Science.

Before proceeding further it may be well to give an outline of the national policy of Theta Tau. Nationally Theta Tau is known as a semi-honorary engineering fraternity, being listed in Baird's as a professional engineering fraternity. It was established October 15, 1904, and at present has thirteen (13) chapters. Delta chapter was established at Case in 1911.

Most chapters of Theta Tau operate on an honorary basis, that is, the members are selected from the Sophomore, Junior and Senior classes on a basis of proficiency in either scholarship, student activities or athletics. The men are chosen without regard to other social fraternity affiliations, by which is meant that a social fraternity is eligible for membership in Theta Tau.

However, Delta Chapter of Theta Tau has been operating on a strictly social basis since her establishment and has competed with the ten other social fraternities at Case in regard to pledging Freshmen, maintaining a house, etc. In this way Delta is unlike her sister chapters.

At the last convention of Theta Tau in December, 1921, it was decided to retain the professional standing of Theta Tau. Shortly after this Delta decided to attempt to join some national social fraternity, since the members of Delta much prefer membership in a national social fraternity than merely in a limited professional fraternity.

It may be mentioned that the national officers of THETA TAU are not in any manner opposed to the members petitioning for a charter of a social fraternity. Their only request is that we do not petition in the name of DELTA CHAPTER of THETA TAU and this request has been complied with.

The members of TAU DELTA TAU stand well among other fraternities in scholarship. Last month we ranked fourth among the eleven Case fraternities and this is our average ranking. We have four TAU BETA PI men this year.

In student activities we rank unusually high. At Case participation in student activities is recognized by the awarding of honor points by the student governing body, the Case Senate. This year out of a total of seven hundred seventy (770) points to be awarded to the entire school we have one hundred and one (101). There are fifteen (15) honor keys to be awarded this spring to the leaders in student activities and of these we have five (5) or one-third of the total.

Among the more important honor positions held by TAU DELTA TAU men are: President and other members of the Senate, Captain and three letter members of the track team, three basketball letter men, two football letter men, two baseball letter men, manager of the football team, vice president of the Senior class, vice president of the Freshman class, manager and seven members of the musical clubs, four members of the leaders corps, Junior class historian, one member of the Case Tech, a weekly publication, and two members of Differential Board, which publishes the annual.

While the chapter does not own the house we are living in, we expect to have our own home within two or three years and already have a House Company organized with a substantial bit of stock paid for and considerably more subscribed. Barring unforeseen complications, we should be in our home within three years.

All our chapter equipment is vested with our House Company, which is a corporation for profit organized under the laws of Ohio. As the stockholders in our House Company are members of TAU DELTA TAU and are desirous of becoming members of ALPHA SIGMA PHI, in the event we are successful in our petition to ALPHA SIGMA PHI, all this chapter equipment will become available to the Case Chapter of ALPHA SIGMA PHI members in Cleveland. Under no consideration will the ALPHA SIGMA PHI house also be the THETA TAU house, as it is planned to operate THETA TAU at Case as a professional and semi-honorary fraternity in the future thus conforming with the national policy and as such the chapter of THETA TAU will have no use for a chapter house. Further, in a short time the members of ALPHA SIGMA PHI will form no greater a portion of the members of THETA TAU than any other fraternity at Case.

It might be well to state that our alumni are much in favor of our action in petitioning ALPHA SIGMA PHI and if this petition will be granted there will be some number who will desire alumni membership in Alpha Sigma Phi.



Oscar Wm. Torreson '23, Age 23

Physicist
Tau Beta Pi
Glee Club 1, 2, 3
Case Senate
Differential Board
Class Historian 2, 3



Stephen Edward Tracey '22, Age 26

Civil Engineering
Stadia Club



Robert L. Zahour '23, Age 21

Electrical Engineering
Electrical Club
Leaders Corps

Harry O. Lovejoy '25, Age 23



Fredrick Wm. Bayne

'22, Age 22

Mechanical Engineering
Mechanical Club
Tau Beta Pi
Case Senate
Boost Case Association
Glee Club '20, '21, '22
Manager Glee Club '22
Junior Class Officer
Differential Board
Honor Key 4



Neff T. Dietrich

'23, Age 23

Mechanical Engineering
Mechanical Club



Wm. F. Billingsley

'24, Age 19

Mechanical Engineering
Mechanical Club



Horton Keith Curtis

'23, Age 22

Mining Engineering
Pick and Shovel Club
Leaders Corps



Henry W. Campbell

'22, Age 23

Mechanical Engineering
Mechanical Club
Tau Beta Pi



George Chas. Graf

'23, Age 20

Mechanical Engineering
Pick and Shovel Club
Tau Beta Pi
Glee Club '22



Kenneth C. Griggs

'22, Age 21

Electrical Engineering
Eta Kappa Nu
Electrical Club
Baseball '21



Carlyle I. Hanks

'25, Age 19

Vice President Freshman Class



Leo Wm. Hebeler

'24, Age 24

Mechanical Engineering
Mechanical Club



Oliver E. Haserodt

'25, Age 18

Glee Club '22



Otto Z. Klopsch

'22, Age 21

Metallurgist
Pick and Shovel Club
Basketball 2, 3, 4
Track 2, 3, 4
Owl and Key
Tech Board 4
Honor Key 4



John Victor Johnson

'24, Age 21

Electrical Engineering
Electrical Club
Case Band '21, '22
Swimming Team



Homer Karl Kaske

'25, Age 18

Glee Club '22



Adna R. Mohr

'24, Age 23

Mechanical Engineering
Mechanical Club
Football 2
Varsity "C" Club
Glee Club 2



Andrew L. Janes

'24, Age 23

Electrical Engineering
Electrical Club
Leaders Corps



Paul Maurice Savage

'22, Age 22

Chemist Alembic Club
Alpha Chi Sigma
Owl and Key
Alpha Phi
Football Manager 4
Baseball 2, 3
President Case Senate 4
Class President 3
Class Vice President 4
Varsity "C" Club
Boost Case Association 2, 3, 4
Editor—Differential 3
Tech Board 1, 2, 3
Honor Keys 2, 3, 4
Senate Member 2, 3
Class Secretary 2
Case Delegate—National Student Council for
Limitation of Armaments



Nathan Hoy Stevens

'22, Age 26

Mechanical Engineering
Mechanical Club
Editor—Gear of THETA TAU



Marcus A. Monaghan

'24, Age 21

Mechanical Engineering
Mechanical Club
Case Band 1, 2
Glee Club 2



Paul F. Pfau

'24, Age 19

Mechanical Engineering
Mechanical Club
Leaders Corps 2
Class Officer 1



Morris Lee Rask

'22, Age 21

Metallurgist
Pick and Shovel Club
Varsity "C" Club
Track 2, 3, 4
Basketball 2, 3, 4
Case News Service
Case Senate
Honor Key 4



Harry Barker Wherry '24, Age 24

Mining Engineering
Pick and Shovel Club



Herbert Arthur Wicks '22, Age 21

Civil Engineering
Stadia Club
Glee Club 1, 2, 3, 4
Y. M. C. A.



Edward John Werner '22, Age 23

Mechanical Engineering
Mechanical Club



Wm. M. Sutcliffe '25, Age 18



Lawrence E. Tompkins '23, Age 21

Mechanical Engineering
Mechanical Club
Varsity "C" Club
Case News Service
Basketball 2, 3
Track 2, 3
Honor Key 3



Russell Charles Fish '22, Age 21

Mechanical Engineering
Pick and Shovel Club



Cedric Paul Faubel '22, Age 24

Metallurgist
Pick and Shovel Club
Red Cross Life Savings Corps
Glee Club '22
Swimming Team



Howard J. Fahrney '25, Age 18



Horace D. Fitzgerald '24, Age 19

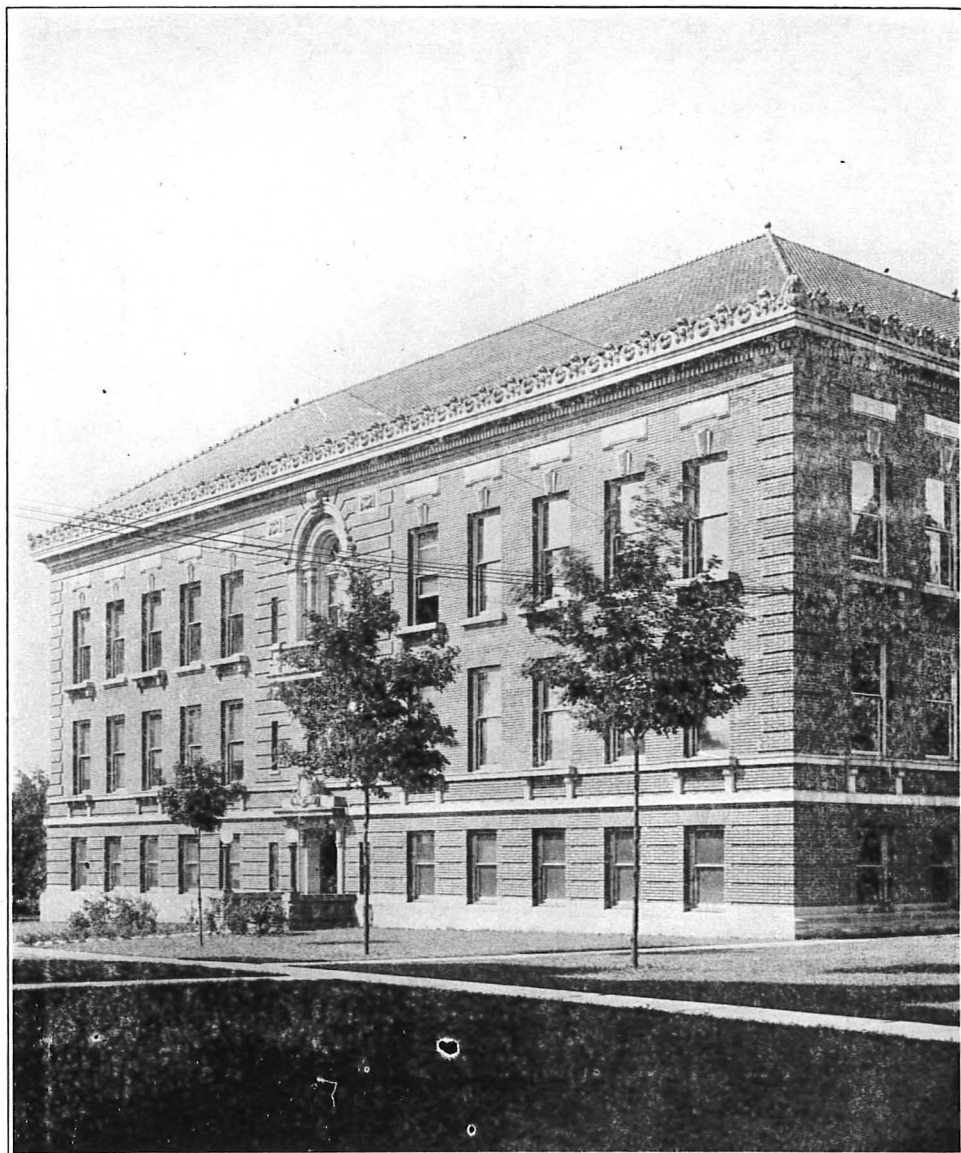
Mechanical Engineering
Mechanical Club



Norman E. Gertz '23, Age 20

Electrical Engineering
Electrical Club





BRIEF HISTORY OF CASE SCHOOL OF APPLIED SCIENCE

CASE SCHOOL OF APPLIED SCIENCE was founded on the 24th day of February, 1877. The founder set apart certain lands to endow and establish a scientific school in the City of Cleveland. After the death of Mr. Case, January 6, 1880, the necessary steps were taken to secure legal incorporation.

Instruction was begun in 1881 in the Case homestead. In September, 1885, the school was transferred to the new building on the present site on Euclid Avenue, opposite Wade Park. Since that time the growth of the college has made new laboratories and class room space necessary. At the present time there are six buildings besides the main building in which the various courses are taught and in which the laboratories are located.

The enrollment of the college has been of recent years about seven hundred students. Of this number slightly more than half are permanent residents of Cleveland. Courses are offered in the following branches of Engineering: Mechanical, Civil, Chemical, Mining, Electrical Metallurgical and a course in Physics.

The scholarship of Case School of Applied Science has always been of high standard, it being generally conceded to be second or third best engineering school in the country. In the school year 1919-20 a point system was inaugurated to further advance the scholarship of the school, whereby it is absolutely necessary for each student to successfully pass the required number of credit hours before he can enter the Junior class.

Although the scholarship of the school has always been held uppermost, during the last school year an honor point system has

been evolved for the purpose of encouraging and awarding participation in school activities.

The scholastic standing and well known character of the school, we believe, make it unnecessary to expand upon the type of men in general attending the institution. Again, the success of the alumni of the school speaks well for the training which the institution gives the students.

Although at present there is no affiliation between Case School of Applied Science and Western Reserve University, it is believed by many that a merger of the colleges will occur in a very few years.

Zeta Psi	1885
Phi Delta Theta	1896
Kappa Sigma	1903
Sigma Alpha Epsilon	1905
Beta Theta Pi	1905
Phi Kappa Psi	1906
Sigma Nu	1907
Zeta Beta Tau	1909
Sigma Tau Delta (local)	1909
Sigma Chi	1909
Theta Tau	1911

LETTER OF RECOMMENDATION

March 29, 1922.

The Officers of the Grand Chapter of
Alpha Sigma Phi Fraternity
Gentlemen:

I understand that the members of the TAU DELTA TAU Fraternity, whose members are also members of the Theta Tau engineering fraternity, have applied for admission to the ALPHA SIGMA PHI. TAU DELTA TAU (or THETA TAU) at present consists of thirty-four members. With a few exceptions, they average well in scholarship—some of them have very high rank and exercise a fine influence in scholarship over the other members of the fraternity. Their standing is probably as high as the general average of the student body. Personally, they are fine fellows—just the type of fellows we find in our colleges throughout the country, who become business and professional men of good standing after they graduate. Their attitude toward the college and its work is excellent in every way. The fraternity has never given the authorities of the college any trouble and I do not think it ever will. It seems to me that you will make no mistake if you take these young men into your organization. I believe they will be an honor to you and that you will come to regard the Case Chapter as one of the best you have.

Very sincerely yours,

CHARLES S. HOWE, President.

