

PETITION

OF

ALPHA SIGMA PSI

OF

KANSAS STATE AGRICULTURAL COLLEGE

TO

ALPHA SIGMA PHI

Instructions to Petitioners

In preparing the following petition observe the directions carefully.

1. Make up one petition for each of our Chapters, one for Grand Corresponding Secretary, one for our Grand Secretary, one for our Grand Junior President. Send all to our Grand Junior President.

2. Bind with silk cord or tape in order that they may be opened, reports inserted and recommendations attached.

3. Arrange every copy of the petition in the same manner.

4. Alumni members of the petitioning body should be set forth in that part of the petition reserved for such in the form of a "Who's Who," giving the surname first and the Christian and middle name, together with all information as to what he did in college, when he graduated, degrees, honors, and positions held since leaving college.

5. Assemble the petition in the following order:

A short history of the educational institution.

A history of the organization petitioning.

Individual statements.

Alumni lists.

A petition signed by every member of the petitioning body with his full name.

Pictures of the campus, house, group, etc., in their proper places.

The following sums should accompany the petition when sent in:

Charter fees	\$100.00
Pins for members	6.25 each
Plaques for members	7.50 each
Paraphernalia for members	4.00
Pharaphernalia for chapter	96.00
Initiation fees for members	15.00 each
Investigation expenses	100.00 indemnity
Expansion office expense	35.00

The investigation expenses may be larger than is actually required, but in any event it will not exceed the actual traveling and hotel expenses of the investigating committee and any sum in excess thereof will be refunded.

If the charter is not granted all sums in excess of actual expenses of investigation will be refunded.

Instructions to Chapters of Alpha Sigma Phi

The within is a correct copy of a petition for a Chapter from this Fraternity and should receive proper and prompt attention at your hands. It is prepared on official blanks furnished by the Fraternity and in accordance with the directions given the petitioners. The reports of the investigating committees, recommendations of members of faculties, other fraternities, etc., together with a finding from the G. J. P., etc., are attached.

These should be studied by every member of your Chapter to the end that he will be prepared to give proper consideration to the petition. Remember copies hereof are in the hands of your fellows in every Chapter and a prompt reply is not only due the petitioners, but also all within our own circle. Your reply should be in the form of a report under the hands and seals of your president and secretary directed to the G. J. P. and sent to him. Observe the provisions of the Fraternity Constitution in taking and reporting these votes. A majority vote of the members present decides the way in which your Chapter votes. Petitions can only be considered at a regular meeting of your Chapter unless every active member is present at a special meeting called for that purpose.

Respectfully,

ALPHA SIGMA PSI

KANSAS STATE AGRICULTURAL COLLEGE
MANHATTAN KANSAS

History of Kansas State Agricultural College

Kansas State Agricultural College, one of the most progressive educational institutions in the Middle West, was originally founded February 9, 1858 as Bluemont Central College. The College acquired its present name under the Morrill Act of Congress on February 3, 1863, when it became a federal land grant college. The present enrollment is over 4000 students, representative of twenty eight states and eleven foreign countries.

The College owns 1,399 acres of land, 160 acres of which is the campus proper, situated adjacent to the city of Manhattan, and on which there are at present forty beautiful buildings of white limestone so harmoniously grouped and uniformly constructed as to present one of the most beautiful and attractive campus scenes to be found at any college.

The total valuation placed upon the buildings and equipment of the College, including a valuation of \$61,792 on livestock owned, is \$3,795,320. Within the last four years there have been constructed at the college, an engineering building at a cost of \$270,000, a veterinary hospital at a cost of \$120,000, and a new agricultural building about to be completed at a cost of \$1,000,000.

The college now offers fifty-eight courses in five divisions: Engineering, General Science, Home Economics, Veterinary Medicine, and Agriculture. The degrees offered are: Bachelor of Science embracing a four-year curriculum, in agriculture, agricultural engineering, electrical engineering, mechanical engineering, civil engineering, architecture, flour-mill engineering, home economics, industrial journalism, agricultural chemistry, biochemistry, industrial chemistry, rural commerce, and general science; Bachelor of Music after completion of the four-year curriculum in music; Doctor of Veterinary Medicine after completion of the four-year curriculum and the degree of Master of Science with an additional two years of academic work; professional degrees in all engineering courses listed above upon completion of an additional academic year.

The Engineering Division has the greatest enrollment of the divisions with a total of 900. Having one of the most modern and completely equipped buildings, with a valuation, including the shops of the various departments, of over \$350,000, this school has become a leading technical institution.

The Agriculture Division has made the name of the college famous through the extensive instruction and experimental work carried on. Through the operation of agricultural experiment stations at various locations in the State, an invaluable service has been rendered to the farming industry of the State. The total enrollment is 560 exclusive of an enrollment of over 800 in short courses in the various departments of animal husbandry, dairy breeding, and poultry raising.

Among the eleven universities and colleges in the United States which offer courses in veterinary medicine, K. S. A. C. ranks fourth in enrollment with a total of 60 students. Besides a separate division building, the new hospital building recently completed is second to none.

The Departments of Music, General Science, and Home Economics provide for as complete and thorough training as will be found at any university or college. Graduates from these departments are in great demand not only in all parts of the State of Kansas, but in many other states.

The College Extension Division has distinguished the college with a recent enrollment in 1923, of 35,400 students who were taking some kind of work at one time. Two years ago the college inaugurated, through this division, the first "College of the Air" and has since, in conjunction with other divisions of the college, sent out regular programmes of instruction and entertainment. The broadcasting station which may be heard from all parts of the United States as Station KSAC, was erected at a cost of \$20,000.

In intercollegiate activities, the college stands at the top. In the field of forensics, ten varsity debates were scheduled last year with Pennsylvania State, Michigan Aggies, Iowa State College, Kansas University, Montana State College, Oklahoma University, Colorado Aggies, and Centre College of Kentucky. Of these ten debates, nine were won and one was lost.

Teams in livestock, dairy, and grain judging have been sent to all parts of the

country. The Livestock judging team took the sweepstakes at the American Royal at Kansas City in 1923. The Dairy Judging team placed second at the National Dairy Show in New York in 1923, competing against twenty-eight teams.

The publications at the college are: "ROYAL PURPLE," the college annual; "THE KANSAS STATE ENGINEER," engineering students publication; "THE KANSAS STATE COLLEGIAN," the regular college newspaper published by the students of journalism; "THE AGRICULTURAL STUDENT," a professional magazine published by the students of the agricultural division; "THE BROWN BULL," the college humor magazine; "THE INDUSTRIALIST" is the official college paper.

As a member of the Missouri Valley Conference, the Kansas Aggies, each year, meet Kansas University, Oklahoma University, Nebraska University, Iowa State College, Washington University, Drake, and Grinnell in football, baseball, basketball, and track. Football is, of course, the major sport and in this the Kansas Aggies have the reputation of frequently upsetting the "dope" in the valley. With the introduction of a system of competitive athletics in which teams or individuals representative of military units, fraternities, clubs, and county organizations compete in these intramural contests, interest in athletics has constantly grown until last year, 1923-24, nearly 1,500 students took part in some form of athletics.

In the summer Olympics of 1924, the showing made by Ray Watson and Ivan Riley, Kansas Aggies, exemplifies the training that the athletes at Kansas State are receiving.

A Memorial Stadium, which is being erected in memory of the forty-five Aggies who gave their lives in the World War, will represent a total cost of \$500,000 when completed. This amount has been raised by the loyal alumni of Kansas State. Besides the excellent track and field facilities thus created, there has just been completed a system of twenty-four completely inclosed outdoor tennis courts.

Kansas State is the home of the Annual Missouri Valley High School Meet and each year over fifty of the leading High Schools of the Valley compete in track and field events.

Under the able and outstanding leadership of Dr. William M. Jardine, who has just been elected to the office of Secretary of Agriculture in President Coolidge's Cabinet, the college has become established as one of the leading educational institutions of the Middle West.

Manhattan, the home of the Kansas State Agricultural College, is sixty miles directly west of the State Capitol at Topeka. The city is situated at the junction of the Kaw and the Blue rivers and is one of the most shady and picturesque spots in Kansas.

The following organizations are among those organized for the primary purpose of fostering scholarship and scientific endeavor at Kansas State:

Alpha Zeta—Scholastic fraternity in agricultural science.

Ferum—Honorary society of debate and oratory.

Mu Phi Epsilon—Women's honorary music fraternity.

Omicron Nu—Scholastic fraternity in home economics.

Phi Kappa Phi—Honor society for scholarship in all departments of American Universities and Colleges.

Phi Mu Alpha—Professional fraternity of men working in the interests of American music.

Phi Alpha Mu—Scholastic fraternity in general science.

Phi Delta Kappa—Honorary educational fraternity.

Pi Kappa Delta—Men's national debate and oratory fraternity.

Purple Masque—Dramatic fraternity.

Quill Club—Distinguished writers.

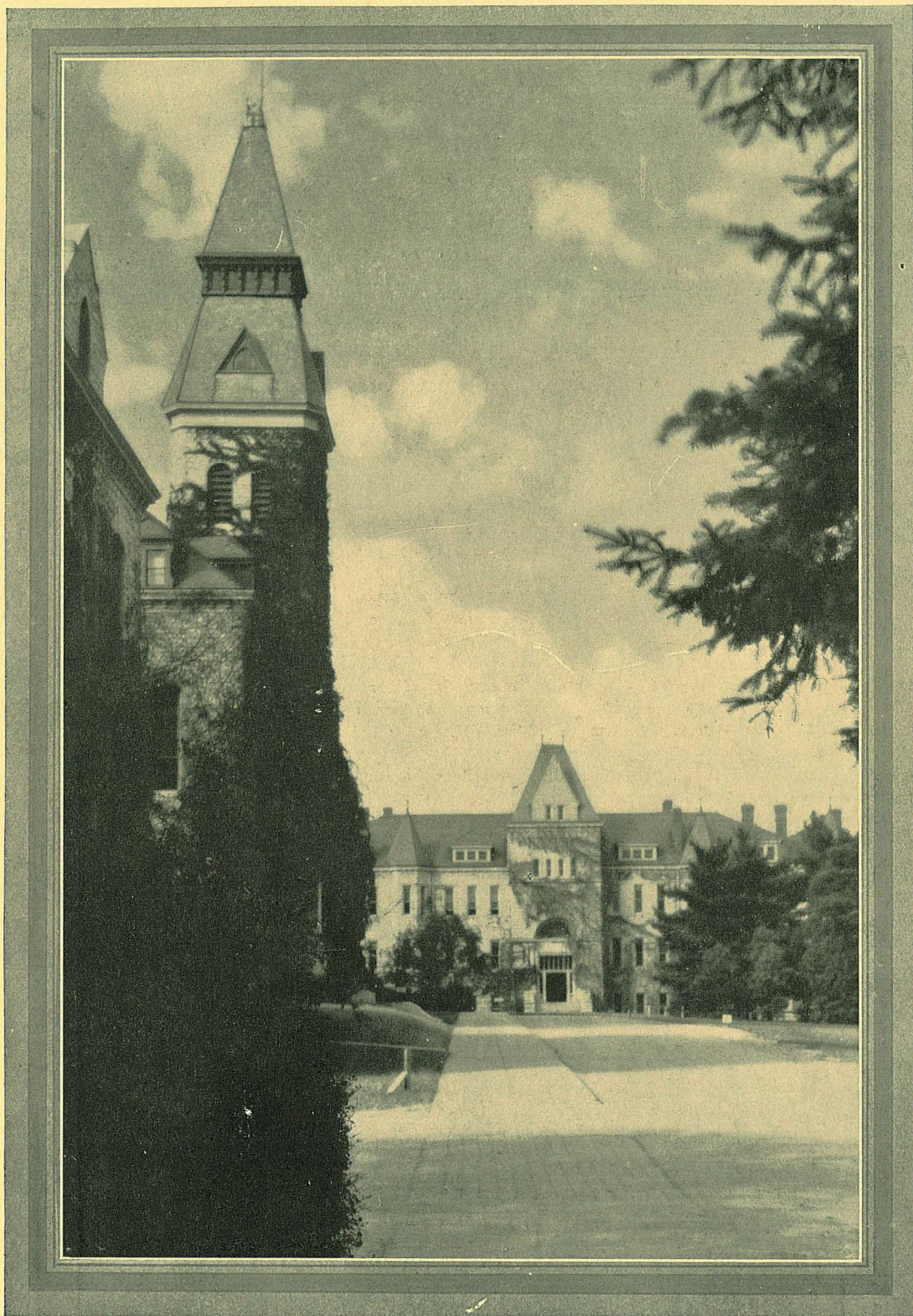
Scabbard and Blade—National honorary military fraternity.

Sigma Delta Chi—Men's professional and honorary journalism fraternity.

Sigma Tau—Honorary engineering fraternity.

Theta Sigma Phi—Women's professional and honorary journalism fraternity.

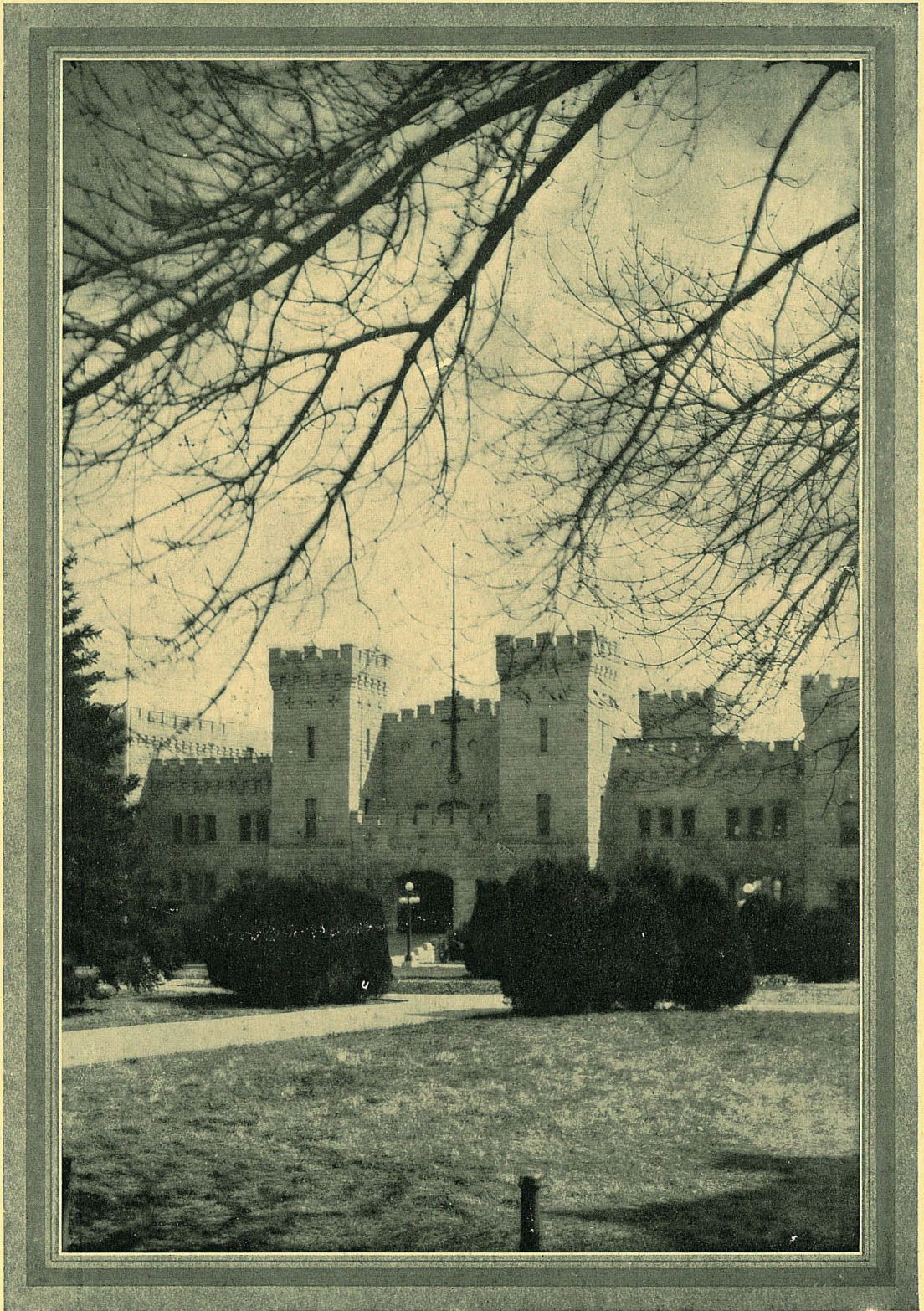
Zeta Kappa Psi—Women's forensic fraternity.



PAST CENTRAL TOWER OF ANDERSON HALL,
ADMINISTRATION BUILDING



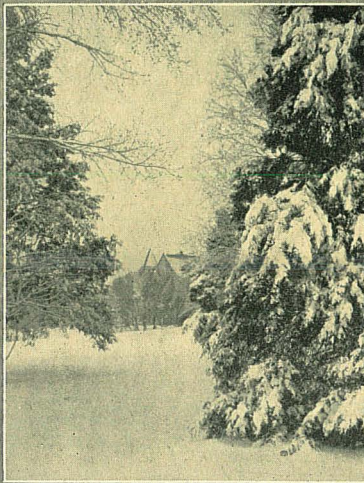
A SHADY LANE ON THE CAMPUS



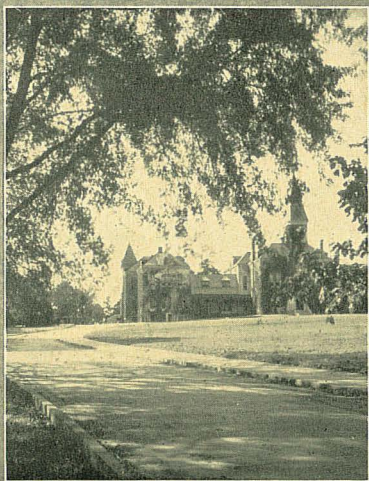
NICHOLS GYMNASIUM



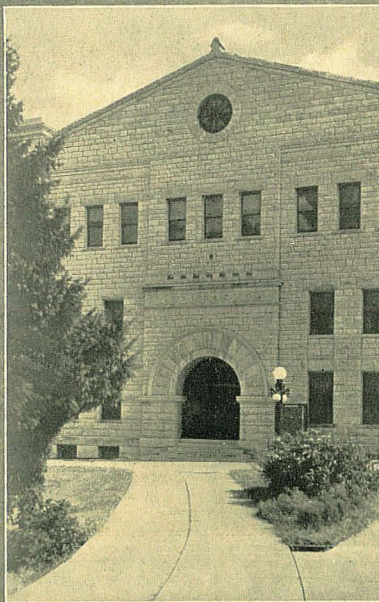
1



2

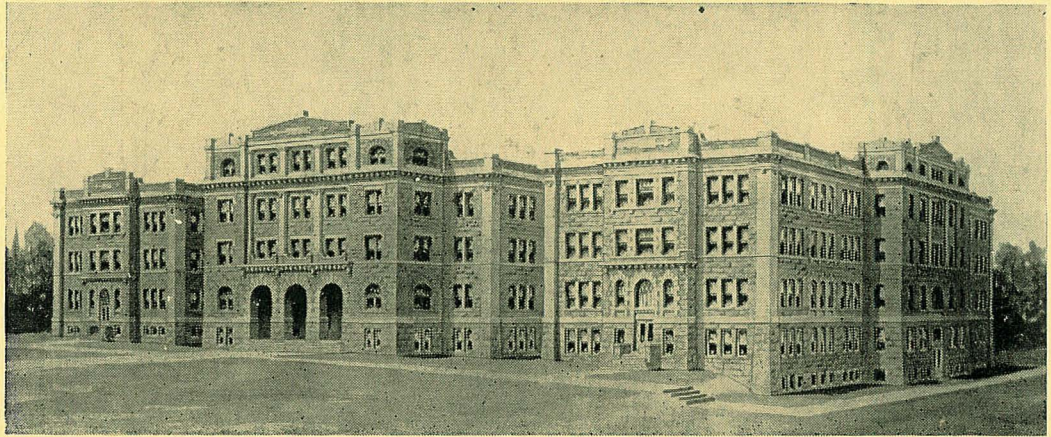


3

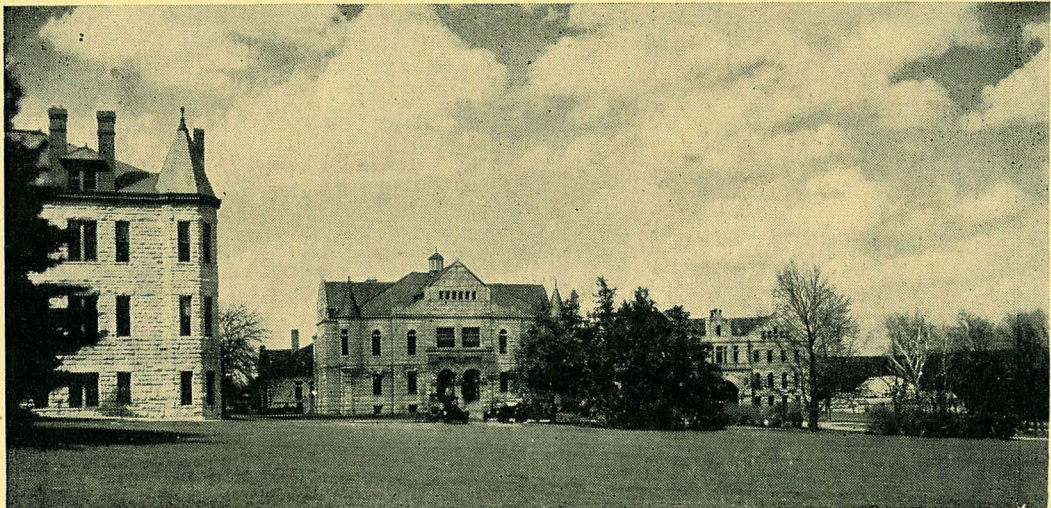


4

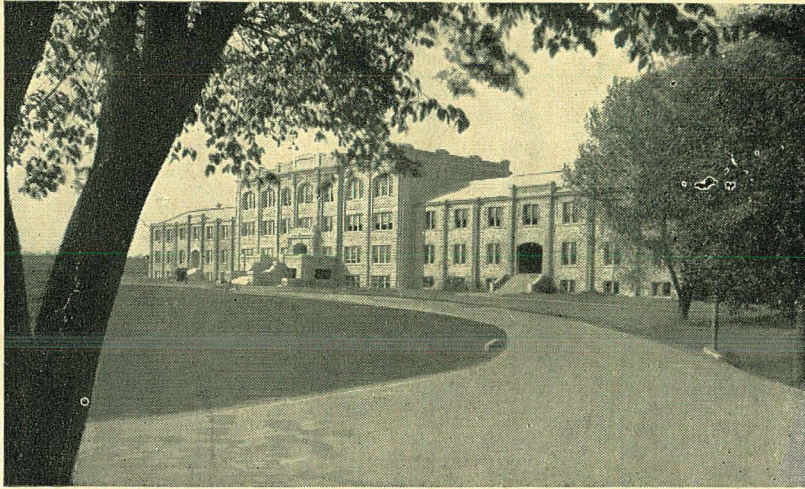
CAMPUS SCENES



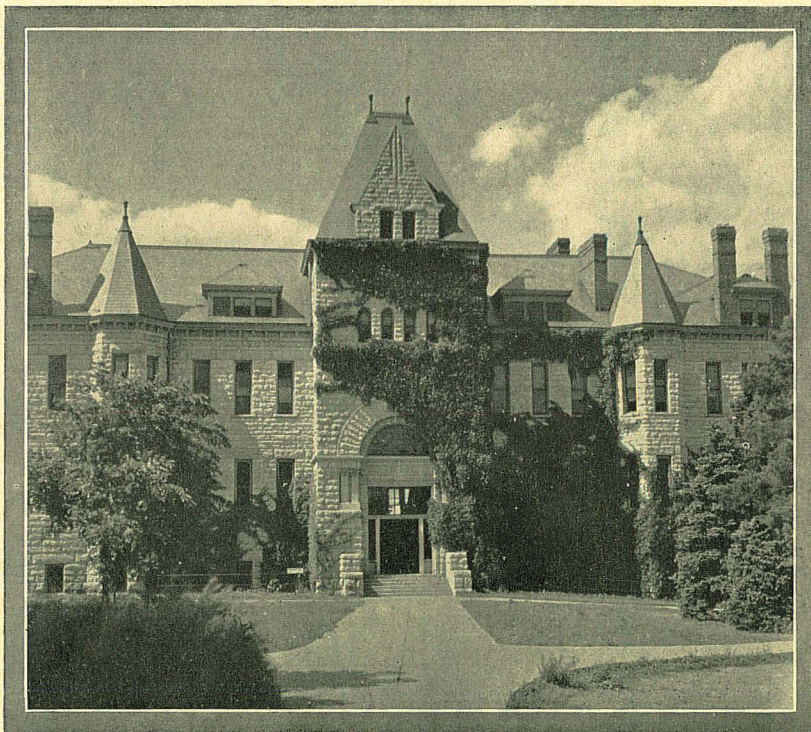
WATERS HALL, AGRICULTURAL BUILDING



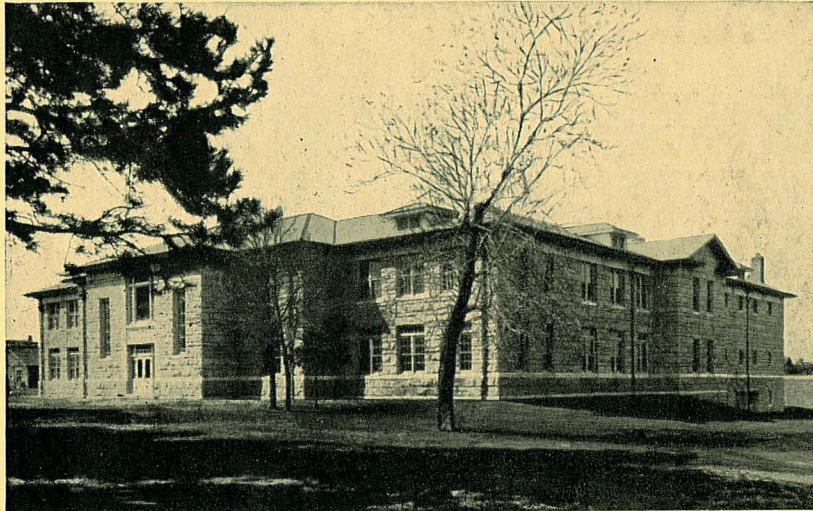
HORTICULTURE BUILDING



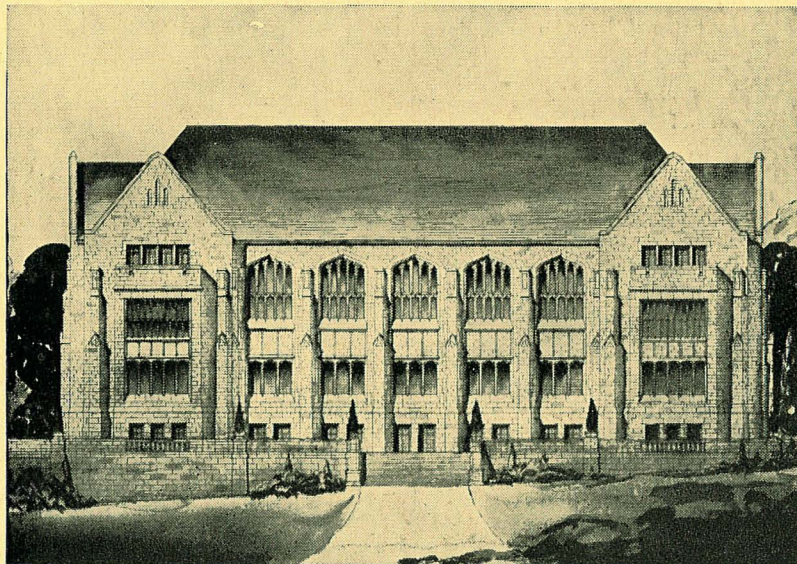
ENGINEERING BUILDING



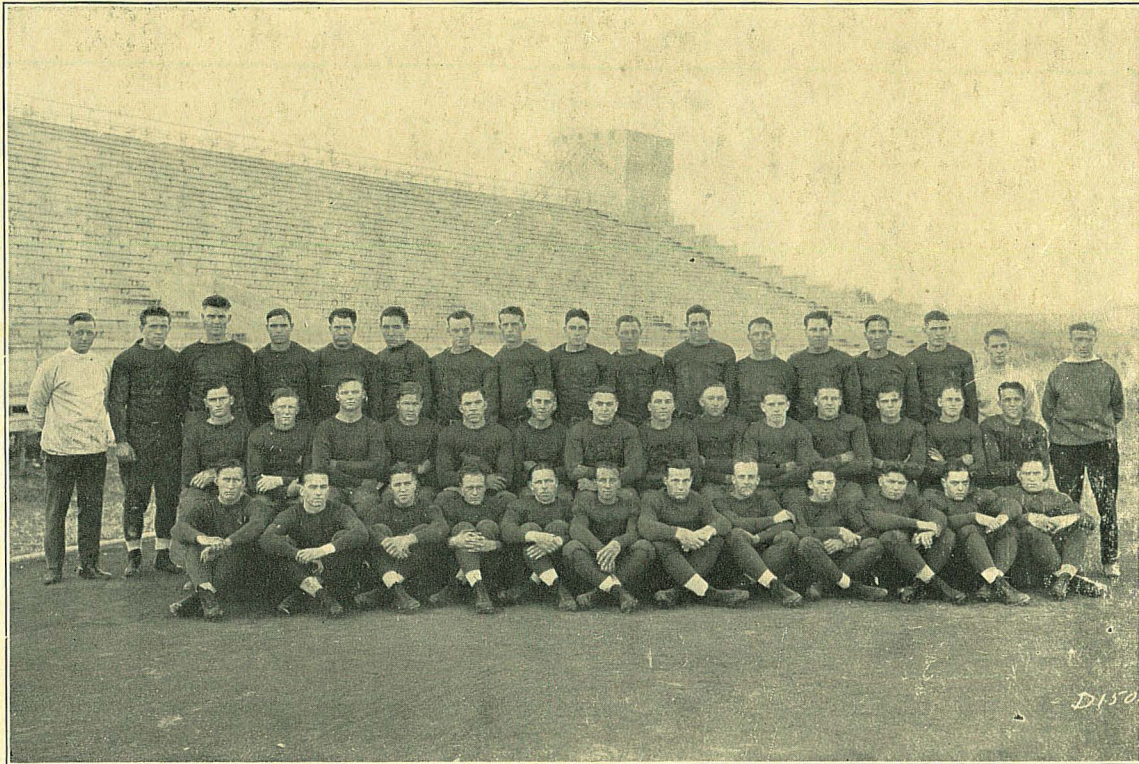
DENNISON HALL, CHEMISTRY BUILDING



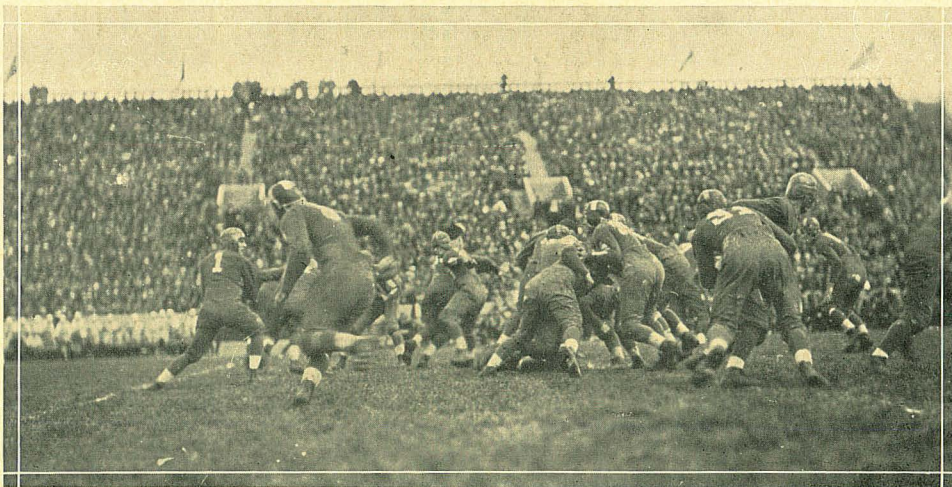
VETERINARY HOSPITAL



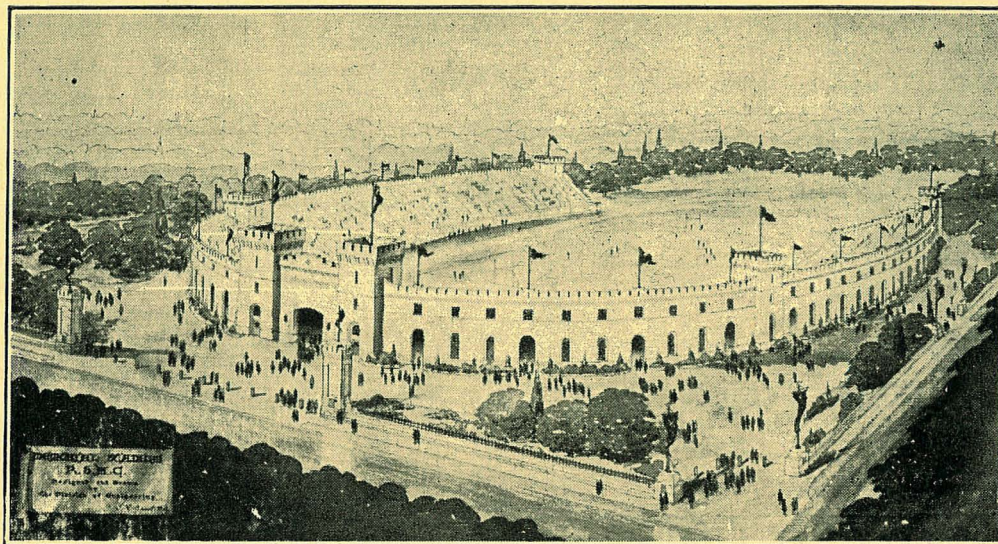
NEW LIBRARY BUILDING WHICH IS NOW UNDER CONSTRUCTION



THE AGGIE FOOTBALL TEAM—1924-25



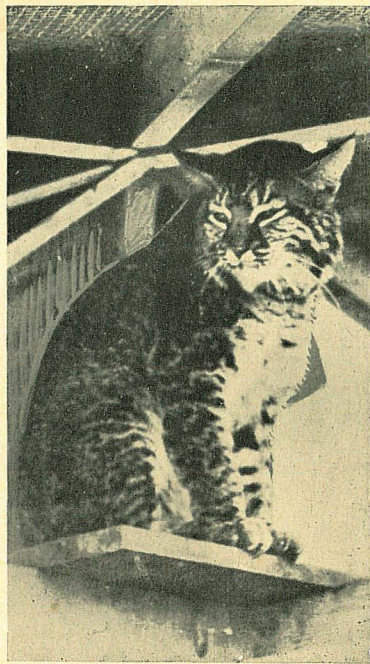
KANSAS AGGIES IN ACTION AT THE STADIUM
Aggies, 21; Oklahoma, 20.



MEMORIAL STADIUM ON AHEARN FIELD



PROF. M. F. "MIKE" AHEARN
 Director of Athletics at K. S. A. C.
 One of the faculty's most popular members.



"TOUCHDOWN II"
THE AGGIE MASCOT

Geographical Distribution of Students

(By States)			
Arkansas	10	Montana	3
Arizona	3	Nebraska	17
California	4	New Jersey	1
Colorado	11	New Mexico	10
Delaware	1	Ohio	4
District of Columbia	1	Oklahoma	41
Idaho	1	Oregon	1
Illinois	5	Pennsylvania	2
Indiana	3	South Dakota	1
Iowa	7	Texas	16
Kansas	3,754	Vermont	1
Louisiana	2	Virginia	1
Massachusetts	1	Wisconsin	1
Minnesota	3		
Missouri	85	Total	3,990
(Foreign Countries)			
Egypt	1	Sweden	1
India	1	Switzerland	1
Mexico	4	Turkey	1
Philippine Islands	4		
Palestine	1	Total	22
Serbia	1		
South Africa	4	Grand Total	4,012
South America	3		

Fraternities

Interfraternity and intersorority relations are maintained by the Men's Pan-Hellenic and the Women's Pan-Hellenic Councils. These councils are composed of one representative from each of the national social fraternities and sororities at the college.

The social fraternities and sororities and the date of installation are:

NATIONAL FRATERNITIES

Acacia	1913	Alpha Tau Omega	1920
Pi Kappa Alpha	1913	Phi Delta Theta	1921
Sigma Alpha Epsilon	1913	Phi Kappa	1921
Sigma Nu	1913	Farm House	1921
Phi Beta Sigma	1913	Alpha Rho Chi	1923
Beta Theta Pi	1914	Phi Sigma Kappa	1923
Sigma Phi Epsilon	1918	Phi Lambda Theta	1923
Delta Tau Delta	1919	Lambda Chi Alpha	1923
Kappa Sigma	1919	Delta Sigma Phi	1925

NATIONAL SORORITIES

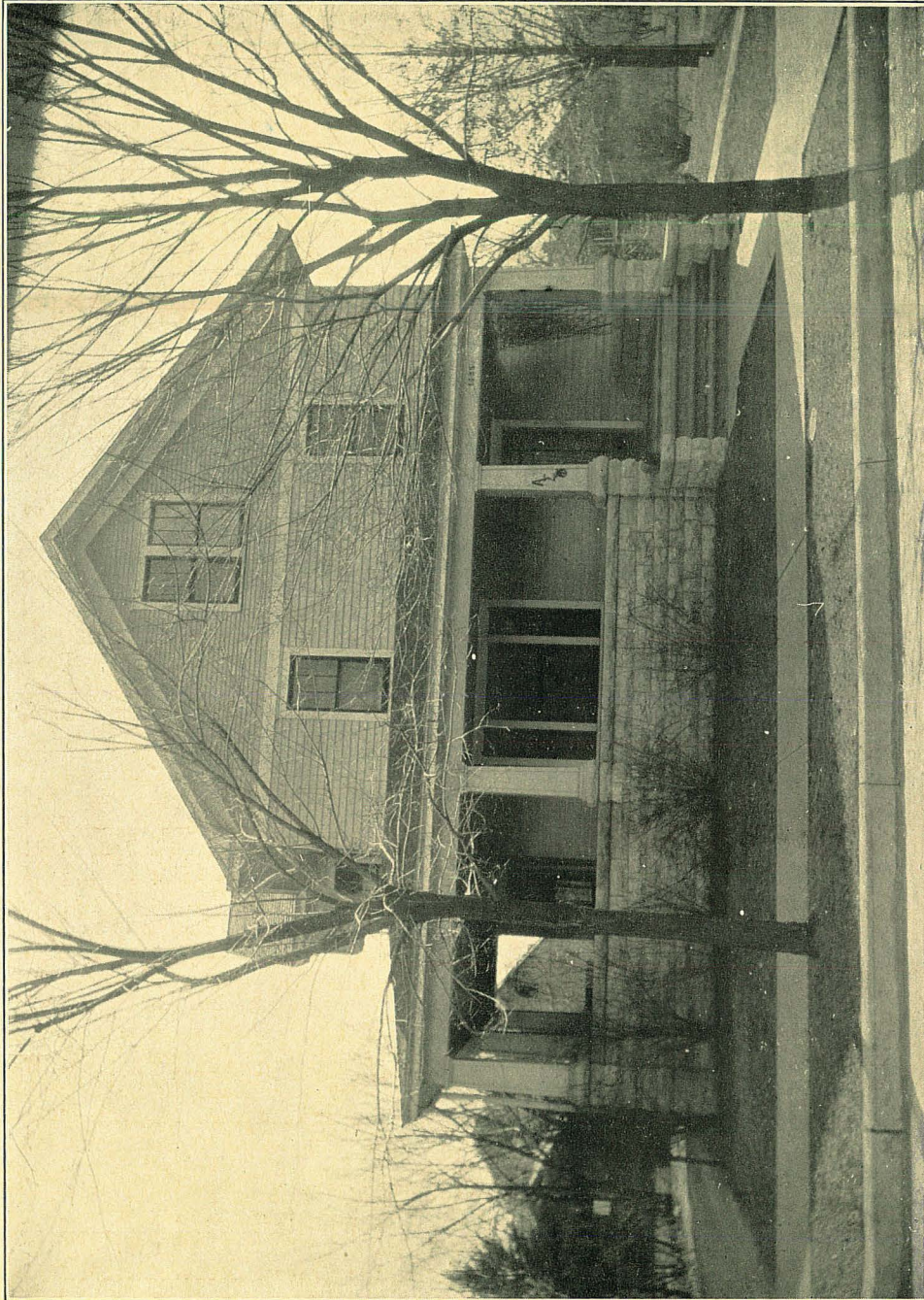
Delta Zeta	1915	Kappa Kappa Gamma	1916
Pi Beta Phi	1915	Kappa Delta	1920
Delta Delta Delta	1915	Alpha Xi Delta	1922
Chi Omega	1915	Phi Omega Pi	1923
Alpha Delta Pi	1915		

LOCAL FRATERNITIES

Alpha Sigma Psi	1923	Phi Kappa Theta	1922
(Petitioning Alpha Sigma Phi)		(Petitioning Phi Kappa Tau)	
Kappa Phi Alpha	1920	Sigma Phi Sigma	1922
(Petitioning Sigma Chi)		Beta Pi Epsilon	1923
Omega Tau Epsilon	1920	(Petitioning Theta Xi)	
(Petitioning Phi Gamma Delta)			

LOCAL SORORITIES

Gamma Phi Delta	1923	Alpha Theta Chi	1924
(Petitioning Delta Gamma)		(Petitioning Alpha Chi Omega)	



Alpha Sigma Psi

Alpha Sigma Psi was organized May 16, 1923, at Kansas State with an active membership of seventeen. Formal announcement was deferred until September 20, 1923 when the charter was granted by the State.

Alpha Sigma Psi was organized by those members of the inactive Eta Chapter of Alpha Psi who were in school in the spring of 1923. These men felt a bond of brotherhood too strong to break so organized themselves into Alpha Sigma Psi, the purpose of which was to petition a strong national fraternity.

Eta chapter of Alpha Psi came into being April 5, 1912, the first national fraternity to be installed at Kansas State. A house was maintained from the beginning of the school year of 1913 until disbandment in 1923. During this time the fraternity established an enviable record for itself in every major college activity. Eta Chapter was a member of the Pan-Hellenic Council, it being the only professional fraternity ever admitted to this Council which is an organization of all the national social fraternities at Kansas State. In scholastic standing of organizations the fraternity ranked third in 1923 and fifth the preceding year. Since membership in Eta chapter was limited to the Veterinary Division which became too small to support a fraternity of desirable men, the chapter was doomed.

After two years of futile effort on the part of the fraternity and the faculty members to get some action from the national officers which would save the fraternity, the chapter decided, upon the advice of alumni and faculty members, to disband and reorganize. The charter was sent in and the existing local fraternity immediately organized, the membership including thirty alumni of Eta chapter who immediately affiliated themselves with the new and present organization of Alpha Sigma Psi. These alumni have been most instrumental in aiding to further foster the high standards of scholarship, fellowship, and brotherhood established by Eta chapter and which standards have been upheld by Alpha Sigma Psi to the present day.

Concerning the activities of the alumni members, we modestly submit the following records: Five members of K Fraternity, honorary athletic fraternity of letter men of varsity squads; two members of Alpha Zeta; two members of Gamma Sigma Delta; sixteen members of Theta Sigma Lambda, sophomore political organization; twelve members of Tobasco, dancing fraternity; a sophomore class president; senior class vice-president; a senior class treasurer.

The total membership of Alpha Sigma Psi is: sixteen members, thirty alumni, six pledges. Among the present activities of members: One member of K fraternity; three members of Pi Epsilon Pi, college pep fraternity; three members of Tobasco; two members of Theta Sigma Lambda; one member Sigma Tau; one member Scarab, senior political fraternity; three members of College Glee Club; treasurer of the present senior class.

In athletics Alpha Sigma Psi has upheld her reputation as a participant in collegiate sports, having members on the varsity football and baseball teams, besides maintaining a basketball, baseball, and track team and competing in all intramural contests.

Our social activities are in evidence in every phase of social functions. These include our annual fall and spring parties, the annual home coming dance, our annual founders day banquet, a farewell banquet the last week of school, house dances frequently in the fraternity house, representation at fraternity open houses and house-mothers afternoon meetings, in addition to the regular entertainment of faculty members at dinners.

Alpha Sigma Psi has occupied its present home since the fall of 1923. The house accommodates twenty men and is entirely furnished with our own furnishings. Negotiations are now under way for the purchase of a new home, situated just two blocks from the college campus and in the best location in the city. The consideration is about \$15,000, which will include remodeling. Our present assets are \$2,350 and liabilities \$2,350.

Alpha Sigma Psi has its own ritual and constitution which have been in operation since reorganization.



Strobel		Kocher	Sherman	Young	Deifendorf	E. Blackburn	Call		
Larson	Kirkwood	Theiss	R. Johnson	Dade	Snyder	W. Johnson	H. Johnson	Cash	March
								Magaw	H. Blackburn

Biographical Sketch of Active Members

RUSSELL DWIGHT DADE

Senior, Division of General Science. Father, Ernest Dade; Mother, Clara Singley; Born, March 13, 1903.; height, 5ft. 8 in.; weight, 165 lbs.; complexion, light; hair, brown; eyes, blue; nationality, Welch-German.

Prepared for College at, Hutchinson High School, Hutchinson, Kansas. Honors: Football; Track; Class Baseball; Mathematics Club; Hi'Y Club; Inner Circle of Hi'Y; Dramatic Club; Dramatic Club Play; Senior Play; House of Representatives; High School Annual Staff.

College Activities: Alpha Psi; Secretary of Alpha Psi; Theta Sigma Lambda; Scarab; Senior Class Treasurer; Secretary of Alpha Sigma Psi (2); President of Alpha Sigma Psi; Assistant Editor of Petition.

HAROLD HETHERTON THEISS

Senior, in Division of Engineering. Father, Charles Theiss; Mother, Minnie Hodgson; born, Hutchinson, Kansas, October 23, 1893.; height 5ft. 7 1-2in.; weight, 145 lbs.; complexion, dark; hair, dark brown; eyes, brown; nationality, German.

Prepared for College at, preparatory school in connection with College Honors: Baseball; Track; Basketball Football; Captain of Basketball Team.

College Activities: Freshman Baseball; Varsity Football; Athletic Director of Sophomore Class; Theta Sigma Lambda; Tobasco; Vice-President of Alpha Psi; Secretary of Alpha Sigma Psi; A. S. C. E.

ALFRED WALTON JOHNSON

Senior, Division of Engineering. Father, John Alfred Johnson; Mother, Nettie Lew; born, July 3, 1902; Vermillion, Kan. Height, 5 ft. 7 in.; weight 155 lbs.; complexion, light; hair, brown; eyes, blue; nationality, Swede.

Prepared for College at, Vermillion High School, Vermillion, Kansas. Honors: Captain of Football Team; Basketball; Baseball; Two all School Plays: Senior Play; Glee Club; Quartet; Hi'Y Club.

College Activities: President of: Phi Mu Alpha, A. S. M. E. and Mechanical Engineering Seminar. Freshman Football and Baseball. Varsity Glee Club; Tobasco; Pi Epsilon Pi; Vice-President of Alpha Sigma Psi (3).

ARNOLD BERNARD CASH

Senior, Division of Engineering. Father, H. E. Cash; Mother, Eva Alice Ward; born, Greenup, Illinois, August 3, 1901; height, 6 ft. 1 in.; weight, 155 lbs.; complexion, light; hair, brown; eyes, gray; nationality, Scotch-Irish-English.

Prepared for College at, Greenup High School, Greenup, Illinois. Honors: Cheer Leader; Glee Club; Orchestra; Quartet; Senior Play; Track.

College Activities: Kansas State Engineer Staff, Assistant Business Manager; Varsity Glee Club; Varsity Band; Cadet Officer R. O. T. C.; A. I. E. E. Chapter Corresponding Secretary; Editor of Petition.

ELMER WILLIAM YOUNG

Senior, Division of Veterinary Medicine. Father, William T. Young; Mother, Minnie R. Schumaker; born, East Carondelet, Illinois, October 17, 1901; weight, 5 ft. 11in.; weight, 170 lbs.; complexion, light; hair, brown; eyes, blue; nationality, English-German.

Prepared for College at: East St. Louis High School, East St. Louis, Illinois. Honors: Dramatic Club; Literary Society; Editorial Staff; High School Paper; Glee Club.

College Activities: Alpha Psi; President Veterinary Medical Association, at Kansas State. Secretary, Alpha Sigma Psi.

IRVIN BERNELL KIRKWOOD

Senior, Division of Engineering. Father, W. M. Kirkwood; Mother, Maude Benson; born, Marysville, Kansas, March 19, 1903; height; 5ft. 7in.; weight, 150 lbs.; complexion, light; hair, brown; eyes, gray; nationality, Scotch-Irish.

Prepared for College at Marysville, High School, Marysville, Kansas. Honors: Football; Basketball; Track; Member of record relay team; Glee Club; Orchestra; Band; Senior Class President; Senior play.

College Activities: Sigma Tau; Pi Epsilon Pi; Tobasco; Glee Club; Chorus; Band; A. A. E.; A. S. C. E.

LEONARD LEWIS STROBEL

Sophomore, Division of General Science, Department of Industrial Journalism. Father, George C. Strobel; Mother, Mary Brinkman; born, Stafford, Kansas, August 30, 1903; height, 6ft. 1in.; weight 190 lbs.; complexion, light; hair, brown; eyes, blue; nationality, German.

Prepared for College at: Pratt High School, Pratt, Kansas. Honors: Football; Basketball; Track; Athenian Literary Society; Vice-President of Hi-Y Club; High School paper Staff.

College Activities: Freshman football; Varsity football; Intramural Basketball.

HARRIS FRANKLIN BLACKBURN

Junior, Division of Engineering. Father, Frank Blackburn; Mother, Mary Killion; born, Malta Bend, Missouri, November 8, 1904; height, 5ft. 9in.; weight, 160 lbs.; complexion, light; hair, brown; eyes, gray; nationality, Scotch Irish.

Prepared for College: Malta Bend High School, Malta Bend, Missouri. Honors: Baseball; Football; Basketball; Track; Tennis; Dramatic Club; Junior Class Treasurer; Glee Club; Band; Quartet.

College Activities: College band; Intramural baseball and basketball.

LAUREL ARMSTRONG MARCH

Junior, Division of Engineering. Father, H. C. March; Mother, Grace Armstrong; born, Bucklin, Kansas, February 7, 1903; height, 5ft. 8in.; weight, 180 lbs.; complexion, light; hair, brown; eyes, blue; nationality, German-English.

Prepared for College: Bucklin High School, Bucklin, Kansas. Honors: Salutatorian Senior Class; Track: Football; Captain of football team; Senior play; Alpha Delta Literary Society.

College Activities: Alpha Psi; Treasurer, Alpha Sigma Psi.

REUBEN MILTON JOHNSON

Sophomore, Division of Engineering. Father, John Alfred Johnson; Mother, Nettie Lew; born, Vermillion, Kansas, March 6, 1904; height, 5ft 7in.; weight, 155 lbs.; complexion, light; hair, brown; eyes, gray; nationality, Swede.

Prepared for College: Vermillion High School, Vermillion, Kansas. Honors: Captain, Football team; Captain, Basketball team; President, Corinthian Literary Society.

JAMES FREDRICK SNYDER

Junior, Division of Engineering. Father, Mark D. Snyder; Mother, Helen Maxfield; born, Monrovia, Kansas, September 13, 1903; height 5ft. 4½in.; weight, 130 lbs.; complexion, light; hair, light brown; eyes, blue; nationality, Swiss-Irish.

Prepared for College at: Atchison County High School, Effingham, Kansas. Honors: Football; Baseball; Glee Club; Quartet; Junior Play; Senior Play; Four all-school plays; Reporter for school paper.

College Activities: Freshman baseball; Pi Epsilon Pi; A. S. C. E.

RALPH GERALD LARSON

Junior, Division of Engineering. Father, Richard F. Larson; Mother, Rosa Wulber; born, Tescott, Kansas, January 31, 1904; height, 5ft. 9in.; weight, 145 lbs.; complexion, light; hair, light brown; eyes, brown; nationality, Dane-German.

Prepared for College: Leonardville High School, Leonardville, Kansas. Honors: Baseball; Football; Basketball; High School paper; High School play; Annual Staff.

College Activities: A. S. C. E.

HOWARD ARDWORTH SHERMAN

Freshman, Division of Engineering. Father, F. W. Sherman; Mother, Sallie B. Harrison; born, Joplin, Missouri, April 16, 1901; height, 5ft. 8½in.; weight, 160 lbs.; complexion, dark; hair, brown; eyes, brown; nationality, Irish-Dutch-Welsh.

Prepared for College at: Elk City High School, Elk City, Kansas. Honors: Basketball; Track; Baseball; Freshman Class Secretary; Sophomore Class President; Junior Class President; Senior Class Treasurer; Business Manager Dramatic Club; Senior Play; Chorus; Class valedictorian.

College Activities: Intramural basketball.

HENRY WILLIAM JOHNSON

Sophomore, Division of Engineering. Father, O. B. Johnson; Mother, Pauline Dorothea; born, Kansas City, Missouri, July 10, 1905; height, 5ft. 5in.; weight 125 lbs.; complexion, dark; hair, brown; eyes, blue; nationality, English.

Prepared for College at: Leavenworth, Kansas. Honors: Basketball; Track; Freshman Class President; Junior Play; Cadet Captain; Hi-Y; Glee Club; Tennis.

College Activities: Intramural basketball.

WALDO LEROY BONE

Freshman, Division of Engineering. Father, I. E. Bone; Mother, Anna J. McKay; born, Longton, Kansas, February 13, 1906; height, 6ft.; weight, 160 lbs.; complexion, light; hair, brown; eyes, blue; nationality, Scotch-Irish.

Prepared for College at: Longton High School, Longton, Kansas. Honors: Basketball; Football; Baseball; Senior play; Debating Team; Sophomore Class President.

College Activities: Intramural basketball.

WILLIAM EARL BLACKBURN

Freshman, Division of Engineering. Father, F. C. Blackburn; Mother, Mary E. Killion; born, Malta Bend, Missouri, January 19, 1908; height, 5ft. 11in.; weight, 135 lbs.; complexion, light; hair, brown; eyes, blue; nationality, Scotch Irish.

Prepared for College at: Malta Bend High School, Malta Bend, Missouri. Honors: Basketball; Literary Society; High School play; Senior play; Annual staff.

Pledges

CLARENCE BYRON DIEFENDORF

Sophomore, Division of Engineering. Father, F. C. Diefendorf; Mother, Lottie Taylor; born, June 8, 1905; height, 5ft. 9 in.; weight, 152 lbs.; complexion, dark; hair, brown; eyes, gray; nationality, German.

Prepared for College at: Leavenworth High School, Leavenworth, Kansas. Honors: Sophomore Class President; Senior Cabinet; Junior Play; Glee Club; Cadet Major; Football; Basketball.

GEORGE DALE CALL

Sophomore, Division of Engineering. Father, G. L. Call; Mother, Clara B. Broughton; born, Sublette, Kansas, February 4, 1904; height, 5ft. 9½ in.; weight, 140 lbs.; complexion, light; hair, brown; eyes, light gray; nationality, English.

Prepared for College at: Moline High School, Moline, Kansas. Honors: Senior Class President; Advertising Manager; High School Paper; Junior Class President; Sophomore Class Treasurer; Dramatic Club; Senior Play; Football; Basketball.

College Activities: Intramural Basketball.

KEITH LOUREE KOCHER

Freshman, Division of General Science. Department of Industrial Journalism. Father, Walter A. Kocher; Mother, Mary M. Paddock; born, Concordia, Kansas, November 13, 1907; height, 6 ft.; weight, 165 lbs.; complexion, light; hair, brown; eyes, blue; nationality, German.

Prepared for College at: Concordia High School, Concordia, Kansas. Honors: Scholarship honors in State Meet; three years in County Meet; Senior play; Track; Football; Hi-Y; Asst. Editor-Hurkarv '23; Athletic Editor '24.

College Activities: Kansas State Collegian Freshman Reporter Staff; Webster Literary Society.

ELDEN SAMUEL MAGAW

Freshman, Division of General Science. Father, Willis Magaw; Mother, Ella M. Uglow; born, Downs, Kansas, January 24, 1906; height, 5ft. 11in.; weight 156 lbs.; complexion, light; hair, brown; eyes, blue; nationality, English.

Prepared for College at: Concordia High School, Concordia, Kansas. Honors: Bronze Medal State Extempore Speaking Contest; Advertising Manager High School Paper; Debate Team three years; Captain Debate Team '24.

College Activities: Webster Literary Society.

CARL MATTHEW HORN

Freshman, General Science. Father, Andrew E. Horn; Mother, Lela Austin; born, Miltonvale, Kansas, Sept. 11, 1906; height, 5 ft. 10in.; weight, 168 lbs.; complexion, light; hair, dark brown; eyes, grey; nationality, English.

Prepared for College at: Miltonvale High School, Miltonvale, Kansas. Honors: Letters in Football, Basketball, Track; Glee Club; Junior and Senior Plays; Business Manager of School Annual.

JOSEPH GAINES SWARTZ

Sophomore, Division of Engineering. Father, James C. Swartz; Mother, Elizabeth Gaines; born, Denton, Kansas, February 24, 1904; height, 5 ft. 3in.; weight, 128 lbs.; complexion, light; hair, dark brown; eyes, brown; nationality, English.

Prepared for College at: Atchison High School, Atchison, Kansas. Honors: Junior and Senior Plays; Business Manager of High School Paper.

The Alpha Sigma Psi Alumni

EVERETT A. TUNNICLIFF

Instructor of Animal Pathology, University of Illinois. A member of American Academy for the advancement of Science, American Veterinary Medical Association. American Society of Bacteriologists. College Activities: D. V. M. degree in '21; Vice-President of Senior Class; Gamma Sigma Delta; Kansas Veterinary Medical Association; Pax; Scarab Pan-Hellenic Council '21; Alpha Psi.

ANDREW J. McKEE

Assistant Veterinarian at the H. G. Horning Small Animal Hospital, Houston, Texas.

College Activities: D. V. M. '23 Varsity Basketball; K Fraternity; Kansas Veterinary Medical Association; Tobasco; Pax; Scarab; Cadet Captain, R. O. T. C.; Junior Class Treasurer; Alpha Psi.

JAMES J. BLACK

Asst. Poultry Pathologist, New Jersey State Experiment Station.

College Activities: D. V. M. '23. Kansas Veterinary Medical Association; Gamma Sigma Delta; Shriner; Alpha Psi.

JAMES A. McKITTERICK

Practicing Veterinarian, Greenwood, Missouri.

College Activities: D. V. M. '22 K Fraternity; Varsity Basketball, Kansas Veterinary Medical Association; Tobasco; Alpha Psi.

FRANK J. HARE

Attending Cornell University, working for masters degree in Pathology. Formerly United States Veterinarian, in San Domingo.

College Activities: Member of Delta chapter of Alpha Psi at the Kansas City Veterinary College, later transferred his membership to the Eta chapter at Kansas State.

JOE A. BOGUE

Practicing Veterinarian, Lawrence, Kansas.

College Activities: D. V. M. '21 Captain Kansas Aggie Football Team '21; K Fraternity; Gamma Sigma Delta; Alpha Psi.

ELDEN E. LEASURE

Practicing Veterinarian, Soloman, Kansas.

College Activities: D. V. M. '16 Varsity Football; Kansas Veterinary Medical Association; Gamma Sigma Delta; K Fraternity; Alpha Psi.

FRED E. WILLIAMS

Athletic Director, Oakland High School, Topeka, Kansas.

College Activities: D. V. M. '22. Kansas State Teachers Certificate; Sophomore Class President; Captain Varsity Basketball '22; K Fraternity; Kansas Veterinary Medical Association; Tobasco; Alpha Psi.

FREDERICK G. HARTWIG

Practicing Veterinarian, Goodland, Kansas.

College Activities: D. V. M. '16; Varsity Football; K Fraternity; Kansas Veterinary Medical Association; Alpha Psi.

GLENN B. KIRKWOOD

M. D. Student at Columbia University; Chief Ambulatory Clinician, S. P. C. A. Hospital, New York City.; Commissioned Officer in U. S. Vet. Medical Reserve Corps; Mason.

College Activities: D. V. M. '23 Varsity Boxing; Kansas Veterinary Medical Association; Freshman Pan-Hellenic Council; Tobasco; Pax; Scarab; Alpha Psi.

GEORGE H. WECKEL

Radio Engineer, at General Electric
Schenectady, New York.

College Activities: B. S. in Electrical
Engineering; A. I. E. E.; Commissioned
Officer in Coast Artillery Reserve Corps;
Treasurer of Alpha Psi.

CARL EDGAR FOGLEMAN

Sales Department, of Wagner Electric
Company; St. Louis, Missouri.

College Activities: B. S. in Mechanical
Engineering; A. S. M. E.; Scarab; Pres-
ident of Alpha Psi.

GEORGE E. MARTIN

Practicing Veterinary Medicine at
Wellsville, Missouri.

College Activities: Veterinary Med-
ical Association; Alpha Psi.

ARTHUR J. JOHNSON

Materials Inspector, Missouri State
Highway Commission, Jefferson City,
Missouri.

College Activities: B. S. in Civil
Engineering, '25; Member A. S. C. E.;
A. A. E.; Commissioned Officer in U. S.
Coast Artillery Reserve Corps; Alpha
Psi.

GEORGE H. DEAN

In Government Hospital for World War
Veterans, at Tucson, Arizona; 32nd de-
gree Mason; American Legion.

College Activities: Veterinary Medical
Association; Secretary of Alpha Psi.

EDWIN L. BROWER

Tutoring at Garrett, Wyoming.

College Activities: Junior in Division
of Veterinary Medicine; Veterinary Med-
ical Association; Theta Sigma Lambda;
Pax; Senior Pan-Hellenic Council; Glee
Club; Micado (Opera); Tobasco; Varsity
Track; Alpha Psi.

BUFORD J. WITTEN

Farming at Trenton, Missouri.

College Activities: Sophomore in Agri-
culture; Alpha Psi.

LeROY R. NOYES

Practicing Veterinarian at Enid, Okla-
homa.

College Activities: D. V. M. '18;
Kansas State Veterinary Association.

BERT E. KEIRNS

Teaching in Greely County, Kansas,
High School.

College Activities: Junior in General
Science; A. B. degree at Kansas State
Normal.

FREDRICK W. EMERSON

Insurance Agent at Ankeny, Iowa.

College Activities: Degree in Veteri-
nary Medicine; Veterinary Medical As-
sociation.

GLENN E. NELSON

Purity Serum Company at Sioux City,
Iowa. Formerly, Veterinary Inspector
for Morris and Co. at Chicago.

College Activities: D. V. M. '13;
Kansas Veterinary Medical Association.

LEE A. SCOTT

Principal of Spring Hill High School at
Spring Hill, Kansas.

College Activities: Degree in Veteri-
nary Medicine; Veterinary Medical As-
sociation.

ROBERT B. SMITH

County Farm Bureau Agent, Raton, N. M.

College Activities: B. S. in Agriculture, '25; Klod and Kernel Club; Agricultural Association; Alpha Psi.

JAMES E. WILLIAMS

Practising Veterinary Medicine and Rural Mail Carrier, at Neosho Falls, Kansas.

College Activities: Doctor of Veterinary Medicines; Veterinary Medical Association; President of Pan-Hellenic Council

WILLIAM J. OVERTON

Partner in Cease Electric Company, Tulsa, Okla.

College Activities: Sophomore in Electrical Engineering; A. I. E. E.; Freshman Pan-Hellenic Council; Commissioned Officer R. O. T. C.; Scabbard and Blade; Alpha Psi.

LEONARD V. KELLY

Druggist Clerk at Greensburg, Kansas. College Activities: Sophomore in Agriculture.

FLOYD G. BASEN

Carpentering, Bushong, Kansas. College Activities: Sophomore in Electrical Engineering; A. I. E. E.

JERRY C. KRYSL

Tutoring at Lucas, Kansas.

College Activities: Sophomore in Agriculture; Freshman Football; Varsity Football; K Fraternity.

ALFRED L. STOCKEBRAND

Studying Osteopathy at Kirksville, Missouri.

College Activities: Junior in Agriculture; Alpha Psi; Tobasco; Theta Sigma Lambda; Pax; (President); Block and Eridle Club.

AMNEL E. McCULLOUGH

Salesman, Solomon, Kansas.

College Activities: Sophomore in Rural Commerce; Freshman Pan-Hellenic; Theta Sigma Lambda; Freshman Football.

CHARLES E. SHERER

Salesman, Mullinville, Kansas.

College Activities: Sophomore in Agriculture; Alpha Psi.

CHARLES B. HARRIS

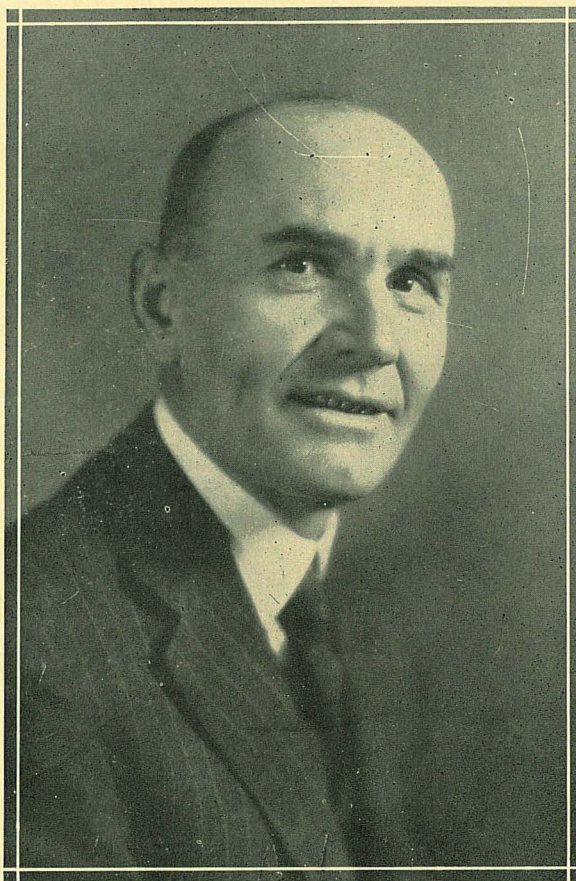
Principal of Fostoria High School, Fostoria, Kansas.; Elk; Blue Lodge Masonry.

College Activities: Senior in General Science.

GEORGE J. SCHEU

Merchant and member Chamber of Commerce, Manhattan, Kansas. Elk; thirty-second degree Mason; Country Club; Kiwanis.

College Activities: Student in General Science, '15.



DR. W. M. JARDINE

Who has just been appointed from the Presidency of Kansas State Agricultural College, to President Coolidge's Cabinet as Secretary of Agriculture.

KANSAS STATE AGRICULTURAL COLLEGE

MANHATTAN, KANSAS

Office of the President

February 27, 1925.

Alpha Sigma Phi Fraternity:
Gentlemen:

I understand that the local fraternity Alpha Sigma Psi, is petitioning your national fraternity for admission.

I am glad to write you in behalf of these young men. I have always found these young men willing to co-operate with me for the best interests of the school. There are a number of outstanding young people in this group. I believe they will make good fraternity material and that you will not regret giving them your serious consideration.

Very truly yours,

W. M. JARDINE,
President.

KANSAS STATE AGRICULTURAL COLLEGE

MANHATTAN, KANSAS

Office of the President

March 13, 1925.

Alpha Sigma Phi Fraternity:

Gentlemen:

I am glad to recommend to your organization a local group of young men who are now recognized under the name of Alpha Sigma Psi, and who are now petitioning for admission to Alpha Sigma Phi.

While I have only a limited personal acquaintance with this group, I am assured by several of the faculty members that the group contains some very excellent young men from the standpoint of scholarship and fraternity material. I am confident that, if you grant their petition, you will have no cause to regret your action.

Very truly yours,

F. D. Farrell,
Acting President.

KANSAS STATE AGRICULTURAL COLLEGE

MANHATTAN, KANSAS

March 5, 1925.

Alpha Sigma Phi:

I am informed that our local fraternity, Alpha Sigma Psi, is petitioning for a charter as a chapter of Alpha Sigma Phi. I am well acquainted with some of these young men and have met all or nearly all of them, and am glad to recommend them as apparently an unusually good group. They are conducting their organization successfully and constitute a reorganization of a group which has been in existence here for six or eight years.

I recommend them to you most cordially for favorable consideration in respect to a charter.

Very truly yours,

J. T. WILLARD,
Vice President,
Dean, Division of General Science.

KANSAS STATE AGRICULTURAL COLLEGE

MANHATTAN, KANSAS

Department of Chemistry

March 5, 1925.

Alpha Sigma Phi Fraternity:

Gentlemen:

I have been informed that our local chapter of Alpha Sigma Psi is petitioning for admission to Alpha Sigma Phi.

The young men composing this local group are representative of our student body. They stand well in scholarship and activities connected with the College. They conduct a home of their own and have been governed by the rules of our Pan-Hellenic Council in all their proceedings.

I am quite confident this group of young men with the aid of a national organization would prove a credit to your order.

Very truly yours,

H. H. KING,
In Charge of Fraternities.

KANSAS STATE AGRICULTURAL COLLEGE

MANHATTAN, KANSAS

Division of Veterinary Medicine

March 18, 1925

To the Alpha Sigma Phi Fraternity:

It pleased me very much to learn a few days ago that Alpha Sigma Psi, a local fraternity, is planning on petitioning Alpha Sigma Phi for a charter. I happen to be personally acquainted with several of the men that are members of the local Alpha Sigma Psi and I have always been impressed with their high standing from the standpoint of scholarship, deportment, and all around good appearance.

I sincerely trust that Alpha Sigma Psi will be successful in obtaining a charter from Alpha Sigma Phi, because I am satisfied that if any group of men attending Kansas State Agricultural College are worthy of this distinction it is the group that have banded themselves together in the local fraternity Alpha Sigma Psi.

Very truly yours,

R. R. Dykstra,
Dean of the Division of Veterinary Medicine.

KANSAS STATE AGRICULTURAL COLLEGE

MANHATTAN, KANSAS

Division of Engineering and Engineering Experiment Station

Office of Dean and Director

March 6, 1925.

Alpha Sigma Phi Fraternity:

Gentlemen:

The local fraternity, Alpha Sigma Psi, is, I am told, petitioning Alpha Sigma Phi. I am well acquainted with a number of the members of Alpha Sigma Psi and consider them to be a fine group of young men.

I believe you would make no mistake in granting their petition.

Very truly yours,

R. A. Seaton,
Dean and Director, Engineering.

KANSAS STATE AGRICULTURAL COLLEGE

MANHATTAN, KANSAS

Mrs. Mary Pierce Van Zile
Dean of Women

March 13, 1925

To the Alpha Sigma Phi Fraternity:

Because of my interest in a group of men students known locally as Alpha Sigma Psi, I take this opportunity to write to you in their behalf.

The college academic divisions and the extra-curricular activities of the institution are fairly well represented in the membership of this group. They have always shown a willingness to cooperate with the college authorities in any way that has been desired. In my judgement they are worthy of the consideration of any national fraternity that is interested in extension.

Very truly yours,

Mary P. Van Zile,
Dean of Women.

KANSAS STATE AGRICULTURAL COLLEGE

MANHATTAN, KANSAS

March 18, 1925.

To the Alpha Sigma Phi Fraternity:

The Men's Pan-Hellenic Council of Kansas State Agricultural College welcomes the opportunity of recommending Alpha Sigma Psi for a national charter.

The Alpha Sigma Psi fraternity represents an earnest group of men of high character who take an active part in the various scholastic and social activities of the Kansas State Agricultural College.

The Alpha Sigma Psi fraternity formerly possessed a national charter and held a membership of good standing in this council. The national charter was voluntarily returned and since has held a high standing in local fraternities.

We feel that they merit your careful consideration.

Respectfully submitted,

K. E. Yandell,

Secretary Men's Pan-Hellenic Council,
Kansas State Agricultural College.

KANSAS STATE AGRICULTURAL COLLEGE

MANHATTAN, KANSAS

Department of Physical Education and Athletics

March 25, 1925.

To the National Chapters of Alpha Sigma Phi:

Gentlemen:

It gives me great pleasure to recommend to you the petition of the local chapter of Alpha Sigma Psi, located at the Kansas State Agricultural College.

Because of my official position as Head Coach of Athletics at the College I have come into contact with several members of the chapter, and in every case I have found them to be men of sterling character, good morals, good students, and men whom I believe in years to come will be a credit to the fraternity, school and state.

The local chapter house is a large commodious building, located one-half block from the campus. The building compares favorably with the best fraternity houses in Manhattan.

Hoping that the National Chapter will look with favor upon the petition, I remain,

Very truly yours,

C. W. Bachman,

Head Coach.

Letters of Recommendation
from members of
Alpha Sigma Phi Fraternity

KANSAS STATE AGRICULTURAL COLLEGE
MANHATTAN, KANSAS

Department of Physical Education and Athletics

March 25, 1925.

To the National Chapters Alpha Sigma Phi,
47 West 42nd Street,
New York City, New York.

Dear Brothers in Alpha Sigma Phi:

Nearly a year ago several young men of this institution waited on me and informed me of their intention of preparing a petition for a chapter of Alpha Sigma Phi. Since that time it has been my privilege to meet often with these young fellows at their local chapter house.

The year's association with the members of Alpha Sigma Psi has convinced me that they are worthy of a place in the Mystic Circle. The active membership is made up of about twenty fellows of more than average ability in scholastic work. They present a pleasing appearance and are prominent socially and take a vigorous part in other college activities.

My sincere opinion is that Alpha Sigma Phi should be represented in the Kansas State Agricultural College by an active chapter and I believe that the petition of Alpha Sigma Psi is worthy of your profound consideration.

This institution ranks very high among the science colleges of the country. Student enterprises are of the highest order and college loyalty and school spirit is of the best.

Another good reason for granting a charter to Alpha Sigma Psi is the chapters that have been already installed at Oklahoma University, Iowa State, and Nebraska University. We are in the same conference and it seems to me it would be a fine thing for Alpha Sigma Phi to have another chapter in the Missouri Valley.

Fraternally yours,

M. F. Ahearn,

Director of Athletics.

Gamma Chapter, Mass. Agr. College.

KANSAS STATE AGRICULTURAL COLLEGE
MANHATTAN, KANSAS

Department of Horticulture

March 19, 1925

To the Chapters of Alpha Sigma Phi:

Dear Brothers:

For the past four or five years, I have been more or less intimately associated with the organization now known as Alpha Sigma Psi. In that time, both as a member of the faculty and as a guest at the social functions, I have found the members of this organization to be gentlemen and desirable as members of Alpha Sigma Phi.

They are active in many phases of the extra college work and would, I am sure, be worthy of carrying on the ideals and traditions of Alpha Sigma Phi in Kansas.

Sincerely and fraternally,

Walter B. Balch,

Asst. Prof. of Horticulture.

Iota Chapter, Cornell.

KANSAS STATE AGRICULTURAL COLLEGE

MANHATTAN, KANSAS

January 24, 1924

To the Chapters and Members of Alpha Sigma Phi:

It is with great pleasure that I do recommend the local fraternity, Alpha Sigma Psi, to other members and chapters of Alpha Sigma Phi.

I have been in contact with the members of Alpha Sigma Psi for the past five months and I know every man of the petitioning group. I sincerely believe that the fraternity and the school would be a credit to Alpha Sigma Phi, and that Alpha Sigma Phi would be a credit to Kansas Aggies.

Fraternally,
Paxton H. Dent,
Alpha Alpha Chapter.

THE ART CRAFT
MANHATTAN, KS.