

**ALPHA SIGMA PHI
IS OUR**

A PETITION FOR CHAPTER STATUS
BY THE ETA COLONY AT
THE UNIVERSITY OF ILLINOIS
TO THE GRAND COUNCIL AND THE
NATIONAL ORGANIZATION OF
ALPHA SIGMA PHI FRATERNITY
SUBMITTED 15 AUGUST 1982

ETA COLONY'S
REQUEST
TO THE GRAND COUNCIL OF
ALPHA SIGMA PHI FRATERNITY
FOR CHAPTER STATUS

The University of Illinois at Urbana-Champaign

Founded in 1867 under the Land Grant Colleges Act, the University of Illinois has a history of more than 100 years as a state-supported land-grant institution with a threefold mission of teaching, research, and public service. Originally named the Illinois Industrial College, the University opened on March 2, 1868, with three faculty members and fifty students in one building near the present community of Urbana-Champaign.

Since then, the University of Illinois has become one of the nation's major universities and has three main campuses -- the original Urbana-Champaign campus and the Chicago Circle campus, each offering baccalaureate, master's, and doctoral programs, and the Medical Center at Chicago with teaching, research, and service units in the health sciences. There are also branches of the Medical College at Urbana-Champaign, Peoria, and Rockford.

The Urbana-Champaign campus, the oldest and largest of the University's three campuses, is located 130 miles south of Chicago and 86 miles east of Springfield in the adjoining cities of Urbana and Champaign, a community of nearly 100,000 residents. Undergraduate, graduate, and professional programs of study are offered at the Urbana-Champaign campus through eight undergraduate colleges, the Graduate College, schools and institutes, the College of Law, and the College of Veterinary Medicine. In addition, two schools of the University of Illinois Medical Center at Chicago are

located at the Urbana-Champaign campus: the School of Basic Medical Sciences and the School of Clinical Medicine.

Eight colleges, the School of Social Work, and the Institute of Aviation offer approximately 150 undergraduate programs of study. The University of Illinois is an educational community of approximately 34,800 students (26,500 undergraduate, 7300 graduate, and 1000 professional students) and 11,000 faculty and staff members. The students come from every state in the union and many foreign countries, but generally about 97 percent of the undergraduates are Illinois residents. Minority students represent about 7 percent of the total campus population. Of the undergraduates, about 60 percent are men and 40 percent are women.

Each fall approximately 5800 new freshmen and 1500 junior transfer students register on campus. Traditionally, these students have been scholastically well above average. Recently the average freshman has had a composite ACT score of 26 and has ranked in the top 13 percent of his or her high school class.

The majority of faculty at Urbana-Champaign hold the highest-level degree in their fields. Recently, 73 percent of the assistant professors, 75 percent of associate professors, and 85 percent of the professors held the highest-level degree in their fields.

Over 4,500 courses are offered at Urbana-Champaign. The majority of intermediate and advanced courses are taught by professors. Approximately one-third of the introductory courses (100-level) are taught by assistant professors, while the remainder

are taught by graduate assistants who are pursuing advanced degrees.

Academic policies and standards at Urbana-Champaign are set by the Faculty-Student Senate, which has 200 faculty and 50 student members. (One member of Eta Colony's Rechartering class has been a student member of the U-C Faculty-Student Senate for 3 years.)

Classes at the Urbana-Champaign campus range in size from one to 100 or more students. Generally, introductory courses in many subjects are offered as large group lectures with students later participating in smaller required discussion or laboratory sessions. Some courses such as music practice, thesis, and special projects are taught on an individual basis. Recently, about 74 percent of all class sections have had fewer than 30 students.

The Urbana-Champaign campus operates on an academic calendar of two sixteen week semesters and one eight-week summer session. A three-week program of intensive instruction in certain courses is available through Intersession, which is conducted between the spring semester and the eight-week summer session. The fall semester runs from late August to just before Christmas; the spring semester runs from mid-January to mid-May.

The University's 703-acre residential campus, with 179 major buildings (and three under construction) for classrooms, laboratories, libraries, residence halls, and recreational and cultural activities, is located astride the Urbana-Champaign border with 1900 acres of agricultural experiment fields nearby. The campus is an attractive and stimulating place to live in and study at

because of its many specialized facilities. A forest plantation, an observatory, PLATO terminals, scenery and costume shops, a child development laboratory, greenhouses, an electron microscope laboratory, music practice rooms, language laboratories, the intra-mural physical education facilities, and special facilities for film and video studies are only a few of the outstanding resources for a complete college education.

The University Library is the third largest among American university libraries. Its collections now exceed five million bound volumes and three million other items, including microtexts, manuscripts, music scores, sound recordings, maps, films, videotapes, and aerial photographs. The library complex includes the central library building, the undergraduate library (a unique architectural design, built underground so as not to throw shadows on the Morrow Plots, the country's oldest, continuous agricultural experiment field) which is designed specifically for the study and research needs of undergraduate students, and twenty departmental libraries located in buildings across campus. Special features of the library include an audio listening area with a catalog of over 4500 records, a microfilm room, and a Rare Book Room with more than 100,000 volumes, including the H.G. Welles personal letters collection and many rare original film scripts.

A wide choice of social, cultural, professional, and recreational activities is available to students. Campus events regularly include programs, lectures, forums, theatrical productions,

films, dances, and special and scientific exhibitions. More than 600 professional, social, and religious organizations are active on campus.

The Illini Union is the University's student center. It houses dining facilities, bowling lanes, a billiard room, art galleries, a browsing library, a bookstore, student organization offices, a campus information office, a check cashing service, a ticket sales counter, lounges, a hotel, and numerous multi-purpose rooms for luncheons, dinners, dances, and meetings. The Illini Union Board (IUB) sponsors a program of activities designed to complement the cultural, recreational, and social life of the campus. There are sixty-two IUB-sponsored activities, among them: Dad's Day, Mom's Day, Homecoming, International Fair, Spring Musical, College Bowl and Trivia Bowl, concerts on the Quad, Union All-Niters, Copacabana, and the Student Film Festival.

The Krannert Center for the Performing Arts, a five-theatre complex offering student, faculty, and national and international professional performances in music, dance, and drama, is a nationally recognized center of cultural activity. During a recent program year, 350 performances were presented. The center also serves as an educational facility for more than 1000 music, dance, and theatre students. There are three museums on campus: the Krannert Art Museum, the World Heritage Museum, and the Natural History Museum.

Many facilities are available for intramural and personal sports and recreation including golf courses; indoor and outdoor swimming

pools; gymnasiums; indoor and outdoor tracks; tennis, basketball, handball, squash, and raquetball courts; ice skating rinks; pistol ranges; archery ranges; and playing fields.

The University of Illinois at Urbana-Champaign actively supports intercollegiate athletics for men and women and is committed to providing a high quality program for all student athletes. Men's intercollegiate sports include baseball, basketball, cross-country, fencing, football, golf, gymnastics, swimming, tennis, track, and wrestling. The women's program includes basketball, cross-country, golf, gymnastics, swimming/diving, tennis, track, and volleyball.

new fraternity



**Informational
Meeting:**

**Wed.
Sept. 16
Room 215
Illini Union
7 pm**

Alpha Sigma Phi

For More Information call JIM at 359-9541

Our Chartering Members

Brian Blalock	John Rapasky, Jr.
James Caruso	John Rapasky III
David Fines	Matt Weiss
Eric Griffith	Angelo Angelakos
Brad Hix	Daniel Costin
Charles McCaffrey	David Evans
Jeff Oken	Stuart Johnston
David Osadjan	Edward Zywicz
Mike Ostler	Mark Bossmann
Daniel Sass	Brian Burress
Andrew Stern	John Harrington
Paul Divittorio	Evan Geiselhart
Douglas Henderson	Advisor:
David Brett	James McMahon, AX '78
Rod Van Bibber	
David Whetstone	
Dean Bridges	
Ken Builta	
Richard Coakley	
Martin Dynes	
Robert Guerra	
Robert Hines	
David Miller	
H. Tom Miller	

Officers

President	Douglas Henderson
Vice-president	Angelo Angelakos
Secretary	James Caruso
Corresponding Secretary	Daniel Costin
Treasurer	David Fines
Pledge Educator	Robert Guerra
Sgt. at Arms	Dave Evans
Associate Editor	Charles McCaffrey
Prudential Members at Large	Brian Blalock
	Daniel Sass
House Manager	Eric Griffith
Rush Chairmen	Stuart Johnston
	David Miller
Scholarship Chairman	Jeff Oken
Social Chairman	Matt Weiss
Sports Chairman	John Rapasky

Committee StructureSocial Committee

Tom Miller
Bob Guerra
Paul Divittorio
Marty Dynes
Matt Weiss
Jim Caruso

Rush Committee

Dave Miller
Stuart Johnston
Dean Bridges
Mark Bossmann
Ed Zywicz

Service Committee

Andy Stern
Chuck McCaffrey
Mike Ostler
Brad Hix
Brian Burress
Dave Simons

Intramural Committee

Blake Smith
John Rapasky
Dave Brett
Ken Builta
Dave Whetstone

Scholarship Committee

Jeff Oken
Rich Coakley
Bob Hines
Dan Costin

Prudential Committee

Doug Henderson
Angelo Angelakos
Brian Blalock
Dan Sass
Dave Fines

House Committee

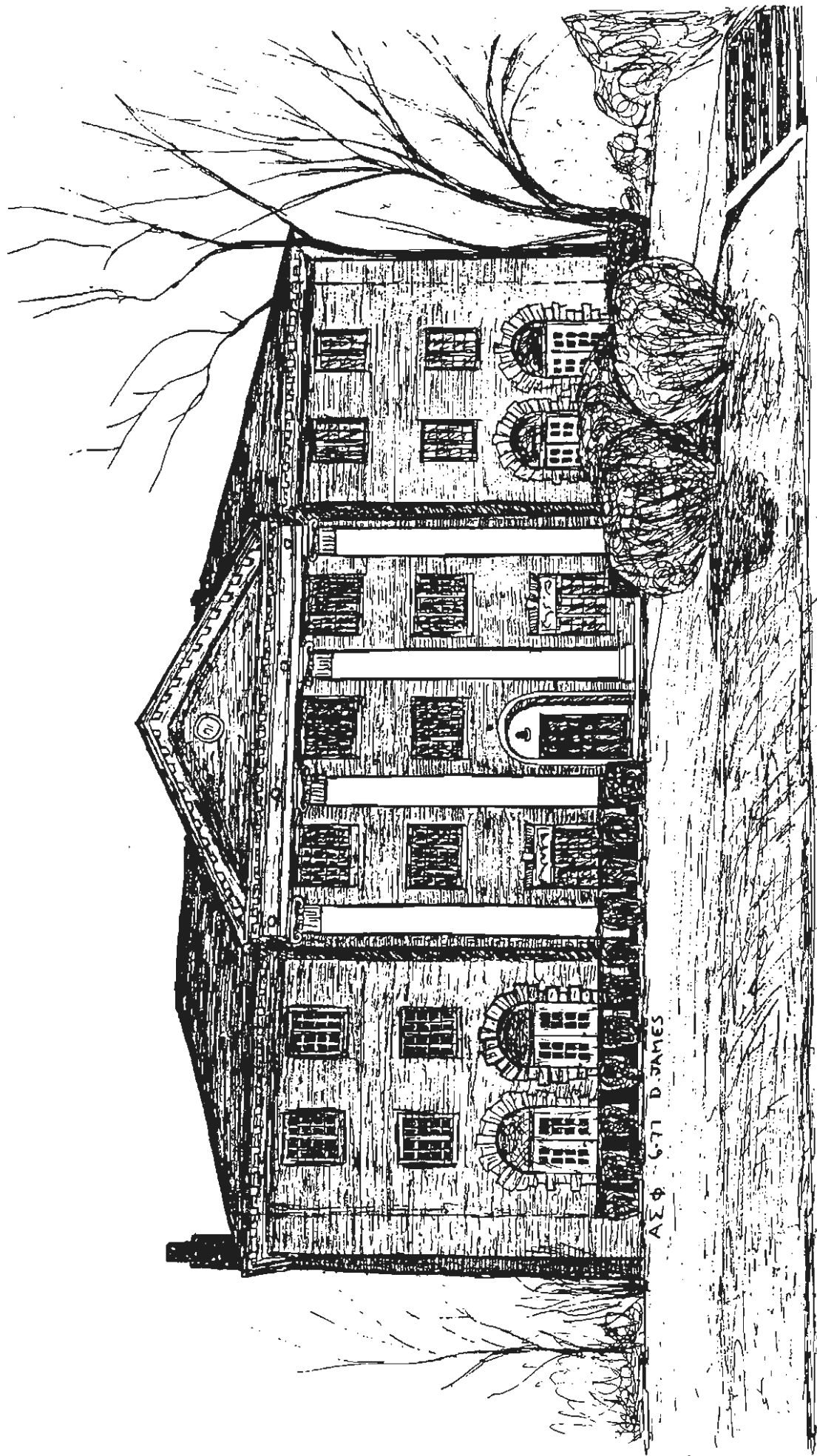
Eric Griffith
Doug Henderson
Mark Bossmann

The Fraternity System at the University of Illinois

The Greek system at the University of Illinois comprises 50 fraternities and 26 sororities. The governing body for the fraternities is the Inter-Fraternity Council, whereas sororities are separately governed by the Panhellenic Council. The two groups share a common office in the Illini Union and conjointly publish a campus newspaper for greeks, "The Illini Greek".

The first fraternity appeared on this campus only five years after the University of Illinois first opened its doors in 1867. From this first fraternity, the creation of the largest fraternity system in the world developed. As this system grew, so did its accomplishments. The first Homecoming celebrations were started on this campus by two fraternity men with the intentions of honoring the past alumni. Now this worthy tradition is nearly universal at both the college and high school levels throughout the United States.

University greeks take a leading role in nearly every campus function. Sharing in this leadership is a major goal of Alpha Sigma Phi as we develop. We are already beginning to show our abilities as leaders and campus movers.



ΑΣΦ

University of Illinois—Urbana Champaign
by 1977—D. A. James

History of Eta of Alpha Sigma Phi Fraternity

The Eos Club originated from the plight of a number of University of Illinois students living in an off-campus rooming house in 1907-08. As the cold days of fall wore into winter and the temperature of their rooms dropped far below the point where men can live and study in comfort, requests to the landlord went unheeded. Several of these men decided to change their status. When the landlord ordered these ringleaders to depart, the tenants decided to take a house for themselves and vacate en masse.

Carl DeWolfe Sater, Delta '06, was lodging in a house where some of those recruited into the Eos Club lived. He interested the members in applying for a charter in Alpha Sigma Phi, and volunteered to aid them in any possible way. At the next meeting of the Eos Club, the news was welcomed and a petition drawn up and signed. The petition was shortly dispatched to Wayne M. Musgrave, Alpha '07, G.J.P. and Chairman of the Grand Prudential Committee. On May 13, 1908, the petition was approved by the Grand Prudential Committee, and by unanimous vote of Alpha Chapter. On May 18, 1908, the petition was approved unanimously by the members of Delta.

When the University reconvened in the fall of 1908, arrangements were made for as many as possible of the members to go to Marietta College to be initiated at Delta Chapter. In the mean time, the colony elected and installed officers: B.H. Dietrich, President; H. C. Balcom, Vice-President; A.L. Smith, Secretary; E.F. Zahrobsky, Treasurer; and J.F. Kohut, Marshall. On October 22, 1908, six

members of Eta presented themselves at Delta Chapter for initiation. Wayne M. Musgrave had come from New Haven, Connecticut, to meet the candidates and direct the installation. Herbert S. Atkinson, Zeta '08, and George L. Ehrmann, Zeta '08, were present from the Ohio State Chapter, and the members of Delta had planned the ceremonies well. The six new initiates from Eta, including President Dietrich and Vice-President Balcom, returned to Champaign and on October 29, 1908, initiated the remaining charter members. Several locations served as chapter houses for Eta until its present home was built in 1928, at that time one of the largest and soundest fraternity structures in the country. It serves well today because of the foresight of its planners.

We will not try to summarize the next 50 years of Eta's history. Unfortunately, the declining membership quality and the financial irresponsibility of the chapter forced the Eta Alumni Corporation and the Alpha Sigma Phi Grand Council to suspend Eta's charter in the spring of 1981. For the following year, the chapter house was leased to the Maranatha Christian Fellowship.

Before the closing of the chapter, James McMahon, Alpha Xi '78, had agreed to serve as resident advisor to the troubled chapter. When McMahon was notified by Executive Director Robert Sheehan that Eta Chapter had had its charter suspended, he accepted Brother Sheehan's challenge to rebuild Eta. (Thank you, Jim.)

Without the use of the fraternity house, Brother McMahon set up Eta headquarters at his two bedroom apartment at 510 E. Stoughton,

Apt. 103, in Champaign. The second bedroom served as office for Jeff Schwind, Director of Chapter Development. Brother Schwind organized the early meetings of the fraternity in the fall of 1981.

The first informational meeting was held at the Illini Union on September 16, 1981. It was attended by 60 men interested in the new group. Only a third of these men remained with the early group, but this core was made up of men wise enough to recognize the magnitude of responsibility and dedication required to start a new fraternity, and strong enough to accept the tasks.

The first twelve men were formally pledged to Alpha Sigma Phi on September 27, 1981. Brother Schwind's program was successful and he passed responsibility for nurturing and advising the colony on to Brother McMahon.

One month and three pledging ceremonies later, the colony had thirty members. This was the minimum number of pledges required by the contract with the alumni to regain the chapter house. On December 12, 1981, the group was formally given colony status.

In the spring semester, the new Eta Colony concentrated on achieving the minimum standards of the Fraternity. Alpha Xi Chapter (Illinois Institute of Technology) became active in officer training of the new group and conducted formal pledge ceremonies. On April 8, 1982, Alpha Xi was approved as the official Sister Chapter of Eta Colony by the Grand Council.

By early May, eleven more men had been pledged to Alpha Sigma Phi, giving a total membership of 41.

Eta Chapter
Alpha Sigma Phi Fraternity

Preliminary Budget

REVENUES

Room, Board, and Dues (35 housemen x \$1100 x 2 semesters)	= \$77,000
Building Fund (not currently a source of revenue)	= 0

Total	= \$77,000

EXPENSES

Rent (mort.=9600, taxes=7500, ins.=2000)	= \$20,000
Food	25,000
Start-up food inventory	500
Cook's salary	5950
state unemp.=180, fed unemp.=42, soc. sec.=374	596
workmen's compensation insurance	150
Illinois Power	6500
Water	2000
Sewer	800
Telephone (monthly service x 12) (long distance net)	360 200
Exterminator	200
Garbage collection	315
License and fees	100
Household supplies	1500
Linen service	300
Maintenance and (small) repairs	2000
Furniture and equipment	500
Building improvement	2000
Social	3000
Rush	800
IFC dues	250
Campus Activities	1000
National Convention & other national fees	150
Flowers and gifts	150
Publications, stationery, postage	800
Accounting services	450
Little Sisters	150
Alumni relations	200
Other	-

Total	= \$75,921
PROFIT/(LOSS)	= \$ 1079

HOUSING AND BOARD CONTRACT FOR THE
ETA CHAPTER OF
ALPHA SIGMA PHI FRATERNITY AT THE
UNIVERSITY OF ILLINOIS

This contract is made by the Eta Chapter of Alpha Sigma Phi Fraternity, located at 211 E. Armoury, Champaign Illinois, hereafter designated "Chapter" and _____, hereafter designated "Member."

This contract is for the initial term listed and also for subsequent terms if extended by completing the portion below.

Member will have a status of _____ and Chapter agrees to provide the facilities for his status as defined by the chapter's constitution and by-laws.

In exchange for the above priveledges, Member agrees to pay Chapter according to the payment schedule listed below. Member also agrees to pay for personal charges incurred by him and for additional assessments voted by the chapter membership.

Member agrees to pay Chapter a security deposit of _____ for the duration of his association with Chapter.

Chapter assumes no liability for the personal property of Member.

Chapter officers shall have the right to enter all rooms of the chapter house for the purpose of inspection or repair.

Member understands that possession or use of controlled substances or involvement in illegal activity shall be grounds for his expulsion and the early termination of this contract.

In addition to the said terms of this contract, Member agrees during his association with Chapter to obey the rules of the University and to adhere to the constitution and by-laws of Alpha Sigma Phi Fraternity.

Chapter shall exhaust all internal procedures available to enforce the terms of this contract. Member agrees to pay all costs of collection including attorney's fees and legal expenses.

PAYMENT SCHEDULE

START DATE	FINISH DATE	DEPOSIT AMOUNT	DATE DUE	PAYMENT AMOUNT	DATE DUE	PAYMENT AMOUNT	DATE DUE	PAYMENT AMOUNT	DATE DUE	MEMBER SIGNATURE	CHAPTER REP SIGNATURE/off	DATE SIGNED

GUARANTY

The undersigned guarantor of the above-named Member hereby approves and agrees to the above contract and guarantees the due, proper, and full performance by the Member of the above chapter, and agrees that in the event of failure and default of said Member at any time to promptly carry out and perform any obligations on the part of the Member undertaken in the above contract, the undersigned, upon notice of such default, will promptly and in all respects perform such obligations and pay amounts owing thereon by the Member.

Guarantor: _____ Signature: _____

Address: _____

City: _____ State: _____ Zipcode: _____

Area Code/Phone number: _____

Relations with Deans and
Other University Officials

We have had frequent contact with Russell Snyder, Dean of Students in charge of fraternity relations. He has shown interest in our colony; his concern has showed in his cooperation and advice to our colony. In his capacity of Dean of Students, he attends monthly Inter-Fraternity Council meetings. We keep him informed of Eta Colony's developments, and he was a speaker at our colonization banquet.

The new colony had a special fundraising event (we sold Taffy Apples on the quad) to pay the previous chapter's debts with the University of Illinois. Clearing this encumbrance allowed the colony full use of University facilities for its functions.

Communication with Headquarters

Our colony has maintained a personal contact with Alpha Sigma Phi National Headquarters, inasmuch as Jeff Schwind, Director of Chapter Development, has made many visits, including one to a pledging ceremony. Our colony has also had the help and support of George Trubow, past G.S.P., who supervised our Formal Spring Rush this past April, and Kevin Garvey, past executive director, who gave our colony a pep talk prior to Rush. Our H.A.E. has consistently submitted material describing our colony's progress toward chapter status to "The Tomahawk" and "The Old Gal Gazette".

Ritual

Pledging Rituals have been strictly observed by Eta Colony, with the help of brothers from Illinois Institute of Technology, Purdue University, and Indiana University who officiated the seven formal pledge ceremonies we have had during the past academic year.

Inter-Fraternal Activity

Throughout the past academic year, Eta Colony of Alpha Sigma Phi Fraternity has participated in the University of Illinois Inter-Fraternity Council, inasmuch as we attended monthly meetings, kept in contact with the presidents and committee chairmen of other fraternities, and we donated work to Formal Spring Rush. We also made special efforts to support the projects of other fraternities and to establish good relations with our neighboring fraternities.

Alumni Relations

For receiving the challenge and opportunity to restart Alpha Sigma Phi on the campus of the University of Illinois, the colony is indebted to the Eta Alumni. James McMahon, Alpha Xi '78, has served as the liason between the alumni and the colony. Brother McMahon will continue his relationship with Eta next year in his expanded capacity of resident advisor at the Alpha Sigma Phi Eta Chapter House.

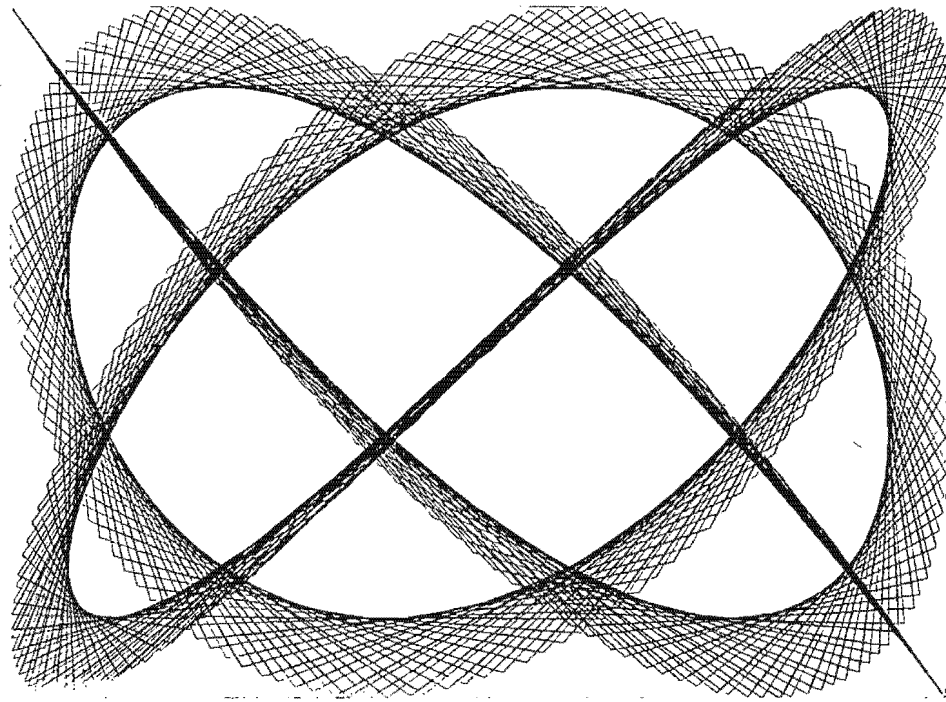
The colony held a Homecoming reception for Eta Alumni in the fall of 1981. At this time, there were 18 members of the colony.

This meeting was responsible for boosting the morale of the colony and for rejuvenating alumni interest in developing Eta Chapter. A Champaign banker and Eta Alumnus, Bernie Quick, has lead the local alumni efforts. A University of Illinois Professor, Malcom Cairns, Zeta Chapter Alumnus, has also been invaluable in the task of preparing the chapter house for re-occupation by Eta this coming fall.

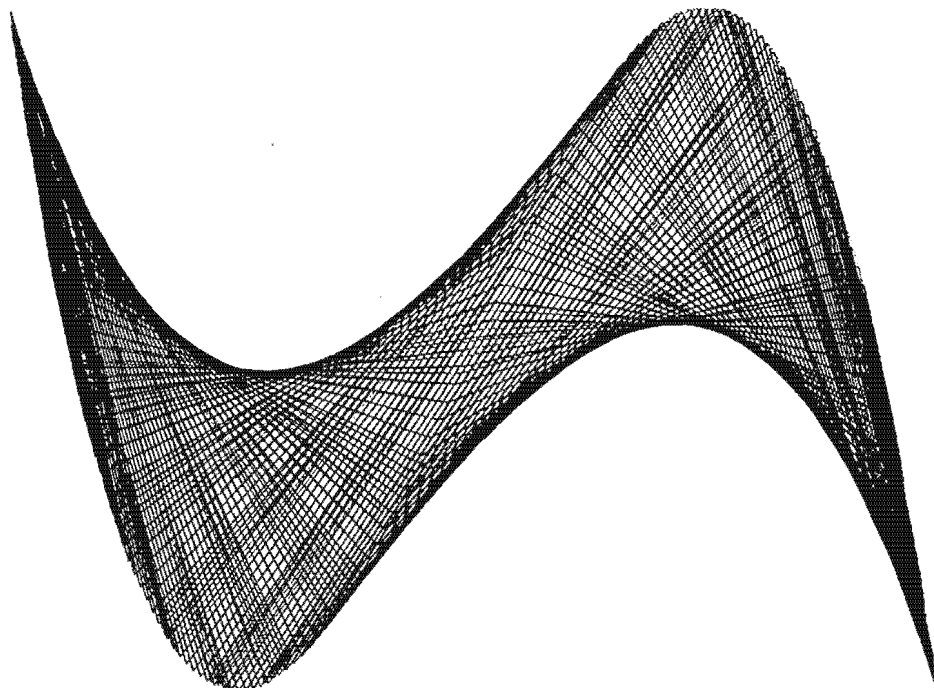
Petition compiled and written by: Douglas Henderson

Charles McCaffrey

James McMahon



OUR LIVES WILL BE TANGLED...



...UNTIL WE REACH

THE GREATER CIRCLE OF:

