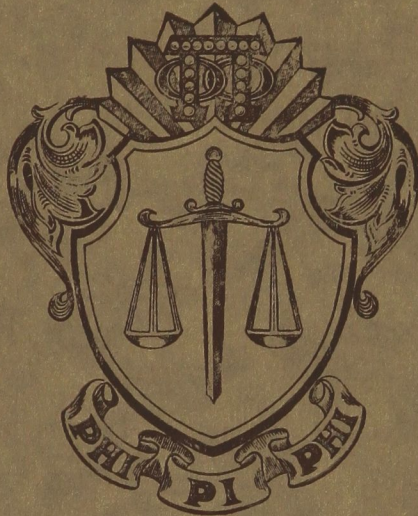


THE QUARTERLY
of
PHI PI PHI



SPRING
1925



The Quarterly of Phi Pi Phi Fraternity

A. C. VAN ZANDT, *Editor*



VOLUME I

MAY, 1925

NUMBER 2

Table of Contents

Directory	38
Chapter Roll	39
The Chicago Convention	41
Golden Chains of Phi Pi Phi	43
The Story of Northwestern	45
John Dinsmore, Beta	50
Rexford Newcomb, Delta	51
Pierre Zampiere, Epsilon	52
Carey Kierstead Ganong, Zeta	53
J. M. Adamson, Eta	54
James R. Griffiths, Eta	55
The Marching Song	56
William Webb Kemp, Theta	58
Frederick L. Griffin, Theta	59
College Honors and Activities	60
Chapter Brevities	72
A Bright Leight at Zeta	82
Among the Alumni	83
Pledges	87
Official Jewelers	90

THE QUARTERLY OF PHI PI PHI

DIRECTORY

PHI PI PHI FRATERNITY

Founded at Chicago on November 15, 1915

NATIONAL COUNCIL

National President.....	DR. WILLIAM BYRON KINNEY
	5611 West Lake St., Chicago
National Vice-president.....	FRED M. CLARKE
	105 North Clark St., Chicago
National Secretary-Treasurer.....	ARNOLD C. VAN ZANDT
	15 East Washington St., Chicago
Counsel.....	VICTOR SCOTT
	Burnham Bldg., Chicago

DISTRICT SUPERVISORS

Central.....	CLARENCE J. COLLINS
	1616 Wabash Ave., Mattoon, Ill.
Western.....	CLAIR M. SENIOR
	Judge Bldg., Salt Lake City, Utah
Pacific.....	WARREN F. LEWIS
	3045 Leeward St., Los Angeles, California

THE QUARTERLY OF PHI PI PHI

CHAPTER ROLL

ALPHA OMEGA

The Founders.....Chicago, Ill

ALPHA

Northwestern University.....Evanston, Ill.
2122 Sherman Avenue

BETA

University of Chicago.....Chicago, Ill.
923 East Sixtieth Street

GAMMA

Armour Institute of Technology.....Chicago, Ill.
3131 S. Michigan Avenue

DELTA

University of Illinois.....Champaign, Ill.
104 East Green Street

EPSILON

Washburn College.....Topeka, Kan.
1321 Buchanan Street

ZETA

University of Wisconsin.....Madison, Wis.
5 Langdon Street

ETA

University of Utah.....Salt Lake City, Utah
1264 East Second South Street

THETA

University of California.....Berkeley, Cal.
2333 College Avenue

Come to Convention

at

Chicago

June 25, 26, 27

Thursday, Friday, Saturday

THE NATIONAL OFFICERS

want you to come

THE CHICAGO CHAPTERS

want you to come

*and we will promise you it will be
worth coming for*

The Convention Committee:

VINCENT A. THOMPSON, *Chairman*

KURT KIESOW, *Alpha*

MARTIN A. CARLSON, *Beta*

RALPH ANDERSON, *Gamma*

THE CHICAGO CONVENTION

BY FRED M. CLARKE, *National Vice-president*

THERE are so many reasons why you should come to convention that it's hard to know just where to begin on the list. Anyway, it's good for the fraternity to have you there, and it's good for you to be there. And that's the main reason!

A convention is a broadening influence for the organization that conducts it and for the member who attends it. The organization gains the impetus of massed loyalty. The individual gets the blessings of personal friendships. It's a get together of kindred interests, the merging of common thoughts, the junction of common bonds, and all for the common good.

First there's the serious side of convention, the business meetings, discussions and deliberations, the shaping of plans and policy, and the weaving together of thread after thread into the firm fabric of organization. It's the place for an interchange of thoughts and ideas, the place to voice your opinions and to listen to the other fellow's. Out of it all your chapter, your fraternity, and you, yourself, the individual member will gain in strength, in unity and in spirit.

Then there's the social side, for all work and no play makes convention a dull day. Perhaps the greatest benefit of all that a convention can offer is the opportunity afforded for true fellowship. Our convention is a meeting of fraternity brothers, a gathering of chosen men, and for many of you it will be an occasion that will influence your entire lives. Here you will meet new faces, listen to new voices, think of new thoughts. Here you will find, if you but wish it so, friends whom you will carry down through the years of your life. You must find some way to come.

Your hosts on this occasion will be Alpha, Beta and Gamma Chapters, and no pains have been spared to make your visit a memorable one. Many of you already know Chicago from previous visits, so a description of the second greatest city in America

THE QUARTERLY OF PHI PI PHI

is hardly necessary. Chicago is a city of three million people and covers more ground than any other city in the world. It lies on the shore of Lake Michigan, principally in Illinois, but it stretches with greedy fingers as far as Wisconsin on the north and into Indiana on the south, if one is to include the over-lapping suburbs that run one into another in the mighty center of activity that is known as Greater Chicago.

Just to the north of Chicago is the village of Evanston, the home of Northwestern University and Alpha Chapter of Phi Pi Phi. Twenty miles to the south is the University of Chicago, the home of Beta Chapter. Almost between the two, and quite in the heart of the city, is Armour Institute of Technology, the home of Gamma Chapter.

Our convention will have a special interest, because it will be, so far as we know, the only progressive convention on record. Instead of cooping ourselves into some central hotel we shall divide our time between our three Chicago chapters.

On Thursday, June 25, convention will open formally at the Alpha Chapter house at ten A. M. After luncheon we shall pile into motor coaches and proceed to see Chicago. This trip will take us over fifty miles of boulevards and parks, and will give us an opportunity to inspect some of Chicago's giant industries at close range, including a stop-over at the Sears-Roebuck plant, and a visit to the world-famed stockyards where everything is utilized except the squeal of the pig. I am informed that this has at last been taken over by the radio industry, and is now being marketed as static. Convention banquet will be on Thursday evening, and will be strictly informal. The time, the place and the eats will be announced later, but present indications point to a very good dinner at a very good hotel. Among our guests and speakers will be several gentlemen of national prominence in the fraternity world, and a very interesting evening is promised.

On Friday, June 26, the convention will be the guests of Beta Chapter at their beautiful house on the South Side Midway. Here we shall be in business session for the entire day, with the

THE QUARTERLY OF PHI PI PHI

exception of time off for luncheon. On Friday evening the convention will be held at the Gamma chapter house on Michigan Boulevard. Here we can promise you an evening of rare entertainment. The dance will be informal, white flannels will be in order, and the Chicago chapters have promised to provide a sufficient number of charmers to keep the visiting brothers interested, delighted and perhaps even distracted.

On Saturday morning we shall have our final business meeting at the Gamma chapter house, and the convention will close with luncheon, followed by an afternoon at the ball park. Following convention proper the visitors have their choice of a vast variety of side trips on the lake, or to the dunes on the south or the lakes of Wisconsin on the north.

The convention ticket will sell for ten dollars, which includes everything except breakfasts. Visiting brothers and delegates will be housed by the Chicago chapters. We want you to come and to have the time of your life, but one rule will be strictly enforced to the letter. There must be no liquor in evidence at this convention, either outside or inside. Aside from that one point upon which we insist you may be yourself as far as you please.

GOLDEN CHAINS OF PHI PI PHI

To the music of *A Long, Long, Trail*. Words by Harry W. Witt, *Theta*, '25

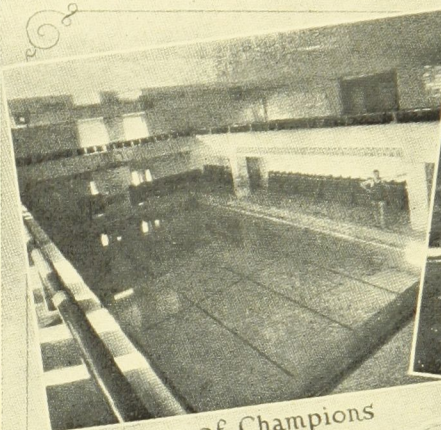
There's a deep and tender feeling,
Enshrined in figures of gold,
Where memories of Phi Pi Phi,
Are 'blazoned on each soul.

There's a warm fraternal spirit,
Enfolding you pal and me,
For golden chains of Phi Pi Phi,
Bind 'til eternity.

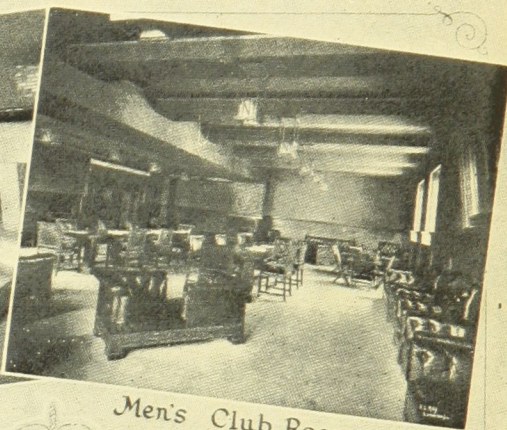
NORTHWESTERN UNIVERSITY

HOME OF ALPHA CHAPTER

Views of Patten Gymnasium

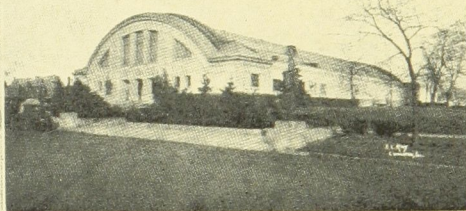


Home of Champions



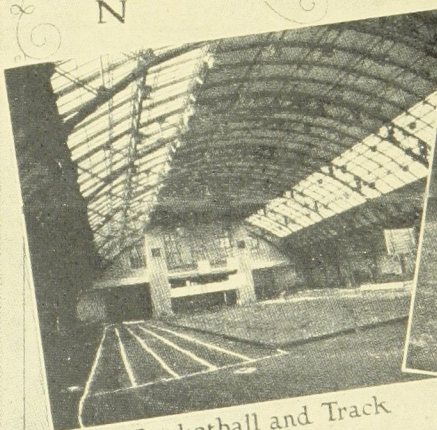
Men's Club Room

N
O
R
T
H
W
E
S
T
E
R
N

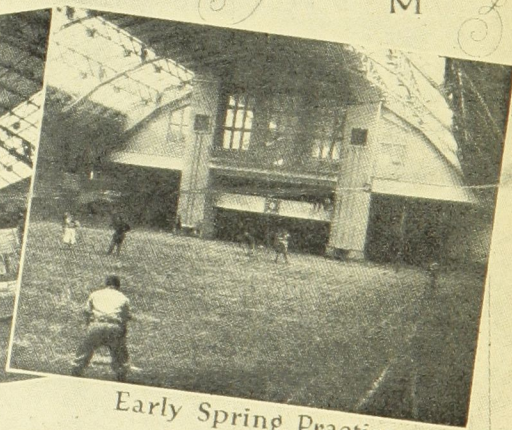


Largest in America

G
Y
M
N
A
S
I
U
M



Basketball and Track



Early Spring Practice

THE STORY OF NORTHWESTERN

BY S. WESLEY HERRING, *Alpha*

The first of a series of sketches of the colleges and universities in which chapters of Phi Pi Phi Fraternity are established.

THE charter of Northwestern University was signed by the governor of Illinois on January 28, 1851. The corporation consisted of forty-two trustees who selected as the seat of the university a tract of land on the shore of Lake Michigan, twelve miles north of the heart of Chicago. Here, in 1855, the first university building was erected and about its location has grown up the city of Evanston, a beautiful residential city of 45,000 inhabitants. To the academic and professional departments of the university developed in Evanston, there have been added from time to time professional schools, which, for convenience and proximity to needed facilities, are situated in Chicago. The College of Liberal Arts and the Graduate School, the College of Engineering, the School of Music, the School of Commerce and the Medill School of Journalism are in Evanston; the professional schools of Medicine, Law, Dentistry, and the part-time departments of the School of Commerce and the Medill School of Journalism are in Chicago.

The university campus in Evanston has an area of about seventy-five acres and is beautifully situated on the shore of Lake Michigan. On the South Campus are the buildings of the College of Liberal Arts, the College of Engineering, the School of Commerce and the School of Speech. On the North Campus are the Garrett Biblical Institute, the Gymnasium, the Observatory and the dormitories for men. The School of Music, Willard Hall, Chapin Hall, Pearsons Hall, Morse House and Emily Huntington Miller House and the dormitories for women, are a few minutes' walk from the South Campus. The buildings of the Medical School are in Chicago between Twenty-fourth and Twenty-fifth streets on Dearborn Street. The Schools of Law, Dentistry and Commerce

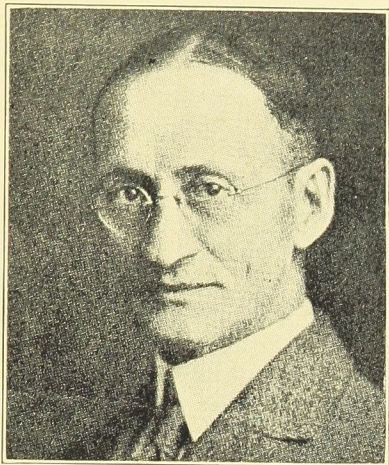
are in Northwestern University Building at the corner of Lake and Dearborn Streets, Chicago. The College of Liberal Arts, ideally located in Evanston, offers well-organized courses for general education. It is the oldest department of the university, opened to students in the fall of 1855.

From its small beginning it has grown, not by rapid expansion or by large benefactions, but by steady gains along conservative lines, each of its sixty years adding some improvements to its physical and educational equipment. The work of the College of Liberal Arts is mainly directed toward furnishing opportunities for a liberal culture or general education. The regulations affecting the choice of studies are such that the student may elect a large part of his work along lines in which he is especially interested.

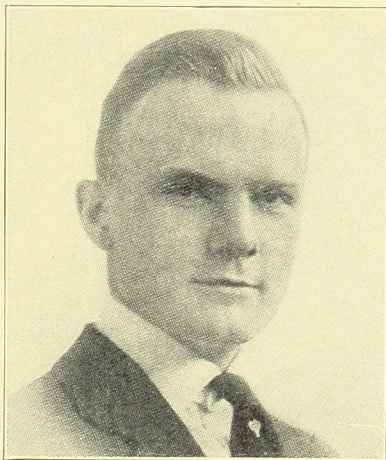
Northwestern University Medical School was organized as the Medical Department of Lind University of Chicago, and its first annual course of medical instruction began on October 9, 1859. The Medical School has been a pioneer in the advancement of medical education in the United States. It was the first American school to enforce a standard of preliminary education, to adopt longer annual courses of instruction and to initiate, in 1859, the graded curriculum, in which the studies were assigned in logical order, and in which laboratory departments prepared the way for the practical clinical branches.

The Northwestern School of Commerce was also a pioneer in its field. It still remains unusual in the opportunity it offers. The purpose is to familiarize the student with the fundamentals underlying modern business practice, so that he or she may have an intelligent basis for the decisions which an executive must make.

The school is well equipped to educate for business. Its location in a great city enables members of the faculty to maintain a close contact with the operation of modern business, and with business practice. It also permits inspection trips by students to important industrial, manufacturing and merchandising establishments. It further makes it possible to utilize successful business men as



WALTER DILL SCOTT
President



JAMES W. ARMSTRONG
Dean of Men



A WINTER CAMPUS SCENE
Northwestern University

instructors in certain specialized courses, and as general lecturers in various fields. The policy of the school is to identify itself closely with the business life of the community, in the belief that in this way it will be able to render a larger service both to its students and to the business world.

The Medill School of Journalism is affiliated with the Northwestern School of Commerce. It was established in February, 1921, as a tribute to the memory of Joseph Medill, founder of the *Chicago Tribune*. The school has the active support of the various Chicago newspapers and periodicals, which have offered their plants for use as laboratories where the students may become familiar with the actual operation of great newspapers.

Chicago newspapermen of rank and achievement co-operate with the school in serving as special lecturers. A series of weekly addresses by men prominent in the profession is arranged each year under the title "Lectures from the News Laboratory." In the course on Problems of Contemporary Thought, distinguished specialists in other fields are invited to speak.

The Law School was founded in 1859 with a sum of money given by Thomas Hoyne, when there were only three similar schools west of the Allegheny Mountains. The first dean was Henry Booth. For many years the School was under the joint control of the old University of Chicago and of Northwestern University, and was known as the Union College of Law. In 1891, the other university having long ceased to share in the management and being about to surrender its charter, Northwestern University assumed sole control, and the school has since been an integral part of the university, and has borne its name.

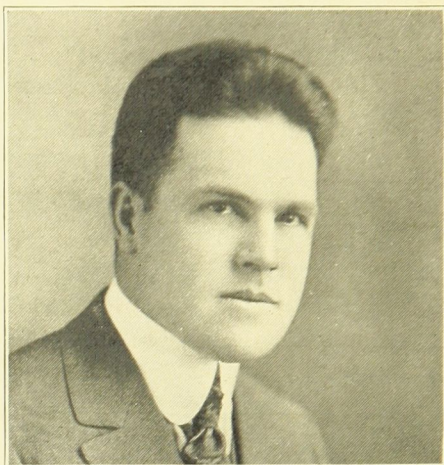
The course of study is arranged to give a knowledge of the law that will be indispensable to students wherever they may practice. Graduates of the school are now located in nearly every state and territory, as well as in foreign countries. Special courses are offered for acquiring knowledge of the law of Illinois.

In recent years a demand for instruction in engineering gradually made itself felt. A gift for the erection of an engineering

building, and for its endowment led the trustees of the university to take action in June, 1907, resulting in the establishing of a college of Engineering. This gift came from Mrs. Gustavus F. Swift and her son, Edward Swift. The building, known as the Swift Hall of Engineering, was dedicated in May, 1909. The purpose of the College of Engineering of Northwestern University is to furnish to each student a thorough training for the profession of engineering, combined with a general training of the man. The college aims to train engineers for the greatest average effectiveness in a lifetime rather than for the greatest effectiveness in the first year after graduation. It aims to develop a capacity for unlimited growth. Hence, strong emphasis is laid on those studies which end to develop the man as well as those which furnish training in engineering.

The Northwestern Dental School is ideally located in Chicago. It is recognized as one of the leading schools for dental training and investigation and is unsurpassed in its reputation for its efficiency and its equipment. One of the important reasons for the great development of the Northwestern Dental School is that it has the best of clinical facilities.

As in many other departments, Northwestern is a pioneer among the few American universities to maintain a fully equipped school of music. It has developed in a large and comprehensive way, courses of music intended to fit its students for professional careers as performers, composers, theorists, teachers or critics, and these courses have drawn mature and talented students from all sections of the country. Moreover, it provides for the study of music as an element of general culture or as an accomplishment. It also maintains a preparatory department for beginners of all ages.



JOHN C. DINSMORE, *Beta*
Purchasing Agent, University of Chicago

JOHN C. DINSMORE graduated from the University High School, Chicago, in 1907, and from the University of Chicago in 1911. He was business manager of the Athletic Department of the University of Chicago from 1911 until 1913 when the board of directors appointed him purchasing agent of the university. In 1920 he was appointed lecturer on purchasing in the School of Commerce, and is also on the faculty of Northwestern University.

In 1923 he was elected president of the Educational Buyers Association, and in 1924 he became vice president of the National Association of Purchasing Agents. During 1925 he has been assigned to a special research problem in purchasing for the Institute of American Meat Packers. Brother Dinsmore has shown a genuine interest in the problems of Beta Chapter, and holds the warm regard of every man in the group.

MARTIN CARLSON, *Beta*.



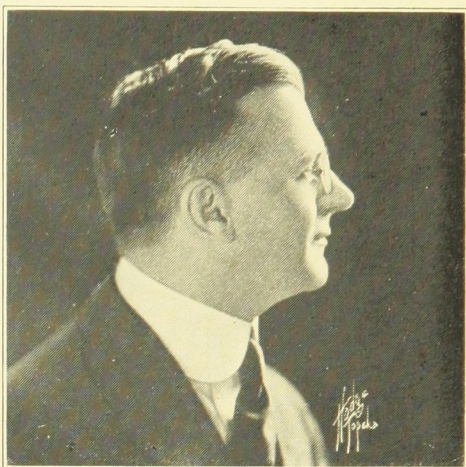
REXFORD NEWCOMB, *Delta*
Professor of Architecture, University of Illinois

BROTHER NEWCOMB was born in 1886 at Independence, Kansas, studied civil engineering at the University of Kansas, and received his B.S. degree in architecture from the University of Illinois in 1911, and received his A.M. from the University of Southern California in 1915, followed by his master of architecture degree from Illinois in 1918. He was acting professor of architecture at Texas A. and M. for one year, and has been at Illinois as professor of architecture since 1918.

Brother Newcomb is president of the American Institute of Architecture, associate editor of the *Western Architect*, and has been honored by Sigma Xi, Alpha Rho Chi, Sigma Tau, Alpha Chi Tau, Gargoyle, Scarab and a number of other societies.

He is the author of *The Franciscan Mission Architecture of Alta California*, *Evolution of the Prison Plan*, *Outlines in History of Architecture*, *Old Mission Churches and Historic Houses of California*, the *Volute in Architecture and Architectural Decoration* and a series of Monographs on Ceramics in *Architecture*.

L. R. WINSAUER, *Delta*.

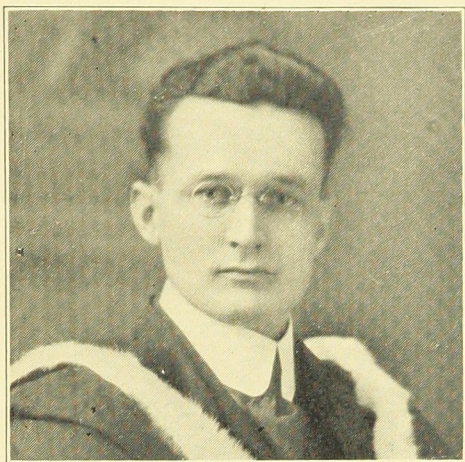


PIERRE S. ZAMPIERE, *Epsilon*
Dean of the College of Liberal Arts, Washburn College

DEAN ZAMPIERE was born in Venice, in 1885, the son of the French Consul General. He attended schools in Switzerland, and in 1904 entered the Royal Gymnasium of Cavour at Florence, Italy. Then came a year of study in Paris, and in 1917 he received his A.B. degree from Michael Angelo Buonorotti College in Florence. Next came a year at the University of Rome, and on to Lausanne, Switzerland, where he received his M.A. degree in 1910.

After a year of travel on the Continent he entered the University of Chicago, received his M.A. there in 1915, and continued with postgraduate work until 1917 when he was admitted to the bar of Indiana. For two years he was head of the Language Department at Ann Arbor, and transferred in 1919 to Washburn College where he became dean of the College of Liberal Arts, and a member of Phi Pi Phi Fraternity.

He is chairman of the Deans Association of Kansas, and has taken a leading part in the community and religious life of the city of Topeka. Dean Zampiere will spend this summer abroad and will attend Oxford University.



CAREY KIERSTEAD GANONG, *Zeta*
Department of Economics, University of Wisconsin

WHERE is another record of adventure to match the history of Brother Ganong, first Canadian member of Phi Pi Phi? Born in Nova Scotia in 1894, the son of a Baptist minister. Educated in schools of the St. John River Valley of New Brunswick. At fifteen years of age a telegrapher for the Western Union, which led into newspaper work. A stretch at Acadia Academy, and then the war.

Rejected at first for eyesight, but accepted for service in 1915. Trained for artillery at St. Johns, and overseas in 1916. A breathing spell in England, and then the Somme. Wounded at Vimy Ridge on Easter Sunday in 1917, with two months in the hospital; then back at the front again. Commissioned an officer of Canadian artillery as the Armistice was signed, followed by a period as lecturer for the Military Y.M.C.A.

Elected in 1923 to an open fellowship in economics at Toronto University, and graduated with his M.A. in June, 1924. Transferred to the University of Wisconsin, where he is a postgraduate student, an instructor in economics, and a very interesting member of Phi Pi Phi.



J. M. ADAMSON, *Eta*
University of Utah Faculty

J. M. ADAMSON was born at American Fork, Utah, on October 23, 1884, and was educated at the University of Utah preparatory school and the University of Utah, graduating in 1914. Following his graduation he was a teacher in Utah public schools and in 1920-21 became a member of the faculty of the West High School in Salt Lake. In the spring of 1921 he became a member of the extension division of the University of Utah. Since then he has served as director of the Lecture Department of the Extension Division. During the summer months he is the traction manager for the Salt Lake and Garfield Railroad, the line which connects Salt Lake with Saltair, the summer resort on Great Salt Lake. His position is highly appreciated by the brothers of *Eta* since he can be relied upon to furnish passes to the resort very frequently.

THEODORE LONG, *Eta*.



JAMES R. GRIFFITHS, *Eta*

Associate Professor of Physical Education, University of Utah

PROFESSOR JAMES R. GRIFFITHS was born in Union, Utah, on December 31, 1884. He attended the Snow Normal College at Cedar City, Utah, and in 1910 was graduated from the University of Utah. Upon his graduation he became a member of the university faculty and at present is associate professor of physical education, in which position he comes in contact with the majority of the freshmen.

Professor Griffiths, or "Jimmy" as he is better known, is a loyal supporter of all things connected with the university. He is a leader in hiking activities and his powers as an entertainer are well known.

THEODORE LONG, *Eta*.

THE MARCHING SONG OF PHI PI PHI

BY DONALD D. FOSTER, *Beta*

Let's sing out a true ley-al song A- bout our fra-
We'll all fight for old Phi Pi Phi, her we will

ter-ni- ty strong, Phi Pi is her name, She's al-ways the
nev- er say die, A- gainst eve-ry foe Our val-or we

same, Truth and hon- or for her we claim; In
show, And our stand- ard nev- er is low, For

all sport and play we will stand The high-est all over the
Phi Pi were game to the end, All pow-er and sin-ew we

land, A hard men-tal feat Is noth- ing to
lend. No task is too great When Phi Pi's at

beat, Phi Pi and De- feat nev-er meet!.
stake Spo- ses! We will make it or break!



WILLIAM WEBB KEMP, *Theta*

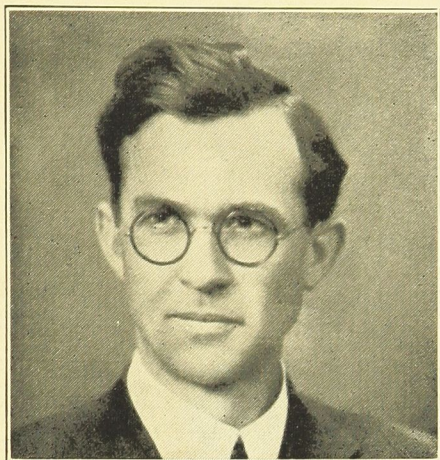
Dean of the School of Education, University of California

BROTHER KEMP was born at Placerville, California, in 1873, and graduated from Stanford University with B.A. in 1898. In 1905 he was a graduate student at University of California; Research Archives of London, England, in 1911, and Ph.D. from Columbia University in 1912.

Director of summer session University of Montana from 1912 to 1915. Professor, School of Administration at University of California from 1915 to 1920, and in 1923 became dean of the School of Education. He is president of San Jose State Teachers' College, lecturer at Stanford University, and a member of the board of education at Berkeley, trustee of the California Teachers' Association, belongs to the Commonwealth Club and is a member of Phi Delta Kappa.

Brother Kemp is the author of *The Support of Schools in Colonial New York*, and is joint author of *The Survey of Education in Hawaii*. He is a contributor to the *Encyclopedia of Education*.

HARRY WITT, *Theta*.



FREDERICK L. GRIFFIN, *Theta*

*Associate Professor Agricultural Education, University of
California*

BROTHER GRIFFIN was born in Colorado, but spent his boyhood on a farm in Oregon. In 1904 he entered Oregon Agricultural College and received the B.S. degree in 1908. He became an assistant in biology, and received his M.S. degree in 1911.

He entered Cornell as a graduate student, and in 1912 became an instructor at the University of California. In 1913 he became professor of agriculture at Oregon Agricultural College, remaining until 1916 when he went to Cornell as professor of rural education.

In the fall of 1918 Brother Griffin returned to California as associate professor of agricultural education, in which capacity he is known as the wise counsellor, sincere friend and unfailing source of inspiration to those who have been fortunate enough to know him.

HARRY WITT, *Theta*.

COLLEGE HONORS AND ACTIVITIES

IN ORDER acquaint the members of the several chapters of the honors and activities of the membership of the fraternity, there is given in the pages of this QUARTERLY a résumé of each chapter. The information that we have at hand may not be complete and in case a member is not mentioned in this list, it is because the chapter reporter has overlooked sending in the material.

We encourage the policy of all members seeking honors and being active in the various college organizations that have the support of the college and university officials, feeling that such participation will bring to each one a more complete understanding of his fellow men, and round out his college career. At the same time, it is desired that special emphasis be placed on scholarship. There is, however, sufficient time left, if properly apportioned, to participate in various activities and still maintain a reasonable degree of scholarship. If we follow the course of the least resistance while in college and do only the things that we are obliged to do, we shall find it is much easier to shirk things in later life. We obtain only what we put into our endeavors and therefore we should obtain all that we can while in college, for at the best the time is very limited.

Hereafter, the chapter letter will be so composed as to give the information of what the membership is doing in the way of activities which should be kept up to date.

ALPHA

Graduates

Roy A. Loebe
Interfraternity Council
Engineering Society

Seniors

Henry B. Lea
Northwestern Glee Club

Juniors

Joe J. Dessert
Wrestling Team
Circus Committee

Wesley S. Herring
Scholarship
Engineering Society
Chapter Secretary

THE QUARTERLY OF PHI PI PHI

Kurt A. Kiesow

President, German Club

Y.M.C.A. Cabinet

Membership Committee

Finance Committee

Vocational Help

Student Activities

Chapter president

Edward J. Laueson

Scholarship

Ki-Yi

Richard L. Lea

Northwestern Glee Club

Charles Owings

Varsity Basketball

Varsity Baseball

Henry B. Smith

Engineering Society

Sophomores

Harold F. Enright

Mu Alpha

Football

Circus Committee

Thurman F. Muller

President Commerce Club

Delta Sigma Chi Fraternity

Manager Commerce School Dance

Jesse Widby

German Club

Chapter Treasurer

Pledges

Leonard Carlson

Engineering Society

C. Robert McManus

Band

Daily Northwestern, Sport Staff

Edward Wilcox

Daily Northwestern Staff

BETA

University of Chicago

Seniors

Frank J. Roos, Jr.

Beta Epsilon

Intramural Touchball

Chapter President

Harry Meislahn

University of Chicago Band

Treasurer Lutheran Club

Intramural Touchball and Basketball.

Chapter Vice President

Charles V. Dinges, Jr.

University of Chicago Band

Intramural Volley Ball

Chapter Secretary

Theodore Fruhling

Alpha Sigma Delta

Business Staff *University Journal of Business*

Student Council C. and A. School

Glee Club

Intramural Touchball, Volley Ball

Basketball and Wrestling

Chapter Treasurer

Ernest J. Thuesen

Lutheran Club

Intramural Athletics

James W. Cooksey

Business Manager, *University Journal of Business*

Alpha Sigma Delta

Intramural Touchball

Charles Thorne

President of Presbyterian Club

First Lieutenant R.O.T.C.

Kappa Epsilon Pi

Melville C. Jones

Intramural Touchball, Basketball

THE QUARTERLY OF PHI PI PHI

Henry G. Hanson

Lutheran Club

Intramural Touchball

Arthur C. Droegmueller

Captain R.O.T.C.

Crossed Cannon

Order of Kedu Remthet

President Lutheran Club

President Society of Industrial
Engineers

Business Staff, *University Journal*
of Business

Blackfriars

Juniors

Martin E. Carlson

Treasurer Eta Sigma Phi

Y.M.C.A. Cabinet

Chairman Deputations Committee
Y.M.C.A.

Blackfriars

Intramural Council

Interscholastic Basketball Hous-
ing Committee

Lutheran Club

Political Science Club

Intramural Touchball, Volley Ball
and Handball

Robert H. Jackson

Black Friars

Gargoyles

Staff, *Phoenix*

William R. Avard

Intramural Touchball

Albert L. Daugherty

Eta Sigma Phi

Interfraternity Bridge

Glee Club

Henry F. Otto, Jr.

Intramural Touchball, Volley Ball,
Basketball

James V. Root

Art Editor, *Phoenix*

Blackfriars

Intramural Handball

John McDonald

Eta Sigma Phi

Dramatic Association

Interfraternity Bridge

Blackfriars

John F. Anderson

Glee Club

Y.M.C.A.

Intramural Touchball and Basket-
ball

Tyron R. MacIvor

Intramural Touchball

Freshmen

Walter P. Kincaid

Cap and Gown Staff

Intramural Touchball, Volley Ball
and Basketball

Maurice W. Moore

Intramural Touchball

Pledges

William J. Davis

Membership Committee, Y.M.C.A.

Franklin P. Mason

Freshman Wrestling Team

Intramural Basketball

Donald B. Mack

Social Service Committee

Y.M.C.A.

GAMMA

Seniors

M. H. Pate

F.P.E.S.

Boxing Team, Champion

Track, '23

Class Basketball

THE QUARTERLY OF PHI PI PHI

Class Baseball
Honor "A" Society
Chapter Sentinel
Delbert P. Noren
A.S.M.E.
Assistant Junior Marshall
A. Kley Miller
Tau Beta Pi
Salamander
Manager Swimming Team
F.P.E.S.
Chapter Steward
D. E. A. Larson
F.P.E.S.
J. G. Johnson
A.I. Ch.E., Secretary
Junior Marshall, '24
Class Basketball
Cap and Gown Committee
Robert P. Gaylord
Basketball, '22, '23, '24, '25, Captain, '24
F.P.E.S.
Honor "A" Society
Chapter Officer
William J. Dixon
Chi Epsilon
W.S.E., Secretary
Track, '23
A.S.C.E.
Elmer Davis
W.S.E.
Interclass Basketball
Varsity Basketball, '23
A.S.C.E.
Lawrence E. Burke
Executive Secretary Y.M.C.A.
Baseball, '22, '23, '24, '25, Captain, '25
Honor "A" Society
A.S.M.E.

Emory M. Pronger
A.I. Ch.E.
Otto S. Peterson
F.P.E.S.
Sphinx
Advertising Manager, *Cycle*
Press Club
Junior Social Committee
Chapter Vice President
Hal C. Mueller
Pi Tau Sigma
Sphinx
Photography Editor, *Cycle*
Press Club, Vice President
A.S.M.E.
Chapter Treasurer
E. H. Marhoefer
W.S.E.
A.S.C.E.
Chi Epsilon
Sphinx
Business Manager, *Cycle*
Assistant Manager Baseball Team, '25
Press Club, Treasurer
Swimming, '24, '25, Captain, '24
Sophomore Class Treasurer, '23-'24
Lyman J. Lowden
A.I.E.E.
Glee Club
Class Basketball
Class Baseball
Earl J. Harrington
A.I. Ch.E.
Chairman A.I.T. Reception Committee
Cycle Staff, '24
Golf Team
Chapter President

THE QUARTERLY OF PHI PI PHI

Perry C. Hall
A.I.E.E.

Class Baseball
Class Basketball
Chapter Officer

G. A. Gustafson
A.I.E.E.

— William E. Downes

A.S.C.E.
Baseball, '23, '24, '25
W.S.E.

Assistant Business Manager,
Cycle

Sphinx

Honor "A" Society
Interclass Basketball

Press Club

Chapter Secretary

Pat. M. Connelly

A.I.E.E.
Baseball, '23

— Ralph F. Anderson

Orchestra

Band

A.S.M.E.

Golf

J. H. Fairbanks

F.P.E.S.

Sophomores

Robert N. Brown

Swimming Team, '24, '25, Captain,
'25

Track Team

Glee Club

Press Club

— William P. Scholz

Press Club, Secretary

Cross-country Team, '23

George F. Verplank

Press Club

Orchestra

M. Gale Morgan

Varsity Basketball, '24-'25

Interclass Baseball

Interclass Basketball

Track Team

Tennis

Wilton F. Kuffel

Varsity Basketball, '24, '25

Class Basketball, '23, '25

F.P.E.S.

Class Baseball, '24

Press Club

Track Team

Myron R. Kleist

A.I.E.E.

Freshmen

Theodore Samuelson

A.A.S.

Track Team

Robert N. McFerran

F.P.E.S.

Swimming, '25

Class Baseball

L. Marhoefer

Swimming Team

Track Team

Freshman *Cycle* Representative

Chapter Officer

Harold V. Burke

Freshman Basketball Team

Freshman Baseball Team

F.P.E.S.

Tennis

Karl C. Anderson

A.A.S.

Press Club

Freshman Social Committee

Track Team

THE QUARTERLY OF PHI PI PHI

Pledges

Geo. J. Jennings
A.I.T. Tennis Champion, '24
Interclass Basketball
Interclass Baseball
C. F. Jillson
Freshman Track Team

DELTA

Seniors

Charles Bowen Danielson
University Band
Everett Carver
Phi Alpha Delta, Professional
Law Fraternity

Juniors

Edward E. Braznell
Chapter Secretary
Chapter Commissary
Robert S. Cannon
Chapter President
Junior Prom Committee
Junior Cap Committee
Dixie Club Formal Committee
Don Kirsch
News Editor; Assistant Sports
Editor, *Daily Illini*
Chairman, Alumni Association
Membership Drive Publicity
William J. Lang
Officer in R.O.T.C.
Joseph T. Lewis
Sachem, junior honorary fraternity
Manager Varsity Swimming Team
Junior Intramural Manager
Dolphin
Frank B. Powers
Eta Kappa Nu, honorary electrical
engineering fraternity.

Varsity Water Basketball Team
Dolphins, professional swimming
fraternity
Tribe of Illini, honorary letter
fraternity
Chapter Vice President

Sophomores

Fred M. Clarke, Jr.
Sophomore Track Manager
Student Opera
Lyman B. Kimmel
Varsity Track Team
Arthur L. Roberts
Chapter Sentinel
House Manager
Leslie R. Winsauer
R.O.T.C. Officer

Pledges

Ralph Dikeman
Freshman Water Basketball Team
William Jost
Staff, *Daily Illini*
K. C. O'Bryan
President Horticultural Club
Dad's Day Committee
Hubert Riggins
Freshman Track Team
Chester Wason
University Band
Lawrence Wilcox
Hoof and Horn Club
Varsity Stock Judging Team
Agriculture Club

EPSILON

Seniors

Wendell Shaw
Assistant in Chemistry Laboratory

THE QUARTERLY OF PHI PI PHI

- Vice President Biology Club
String Quartet
Orchestra
Chemistry Club
Helianthus Literary Society
Treasurer, Epsilon Chapter
- Marshall Mayberry
Interfraternity Basketball
Football
- Camden Strain
Pi Gamma Nu, national honorary
social science fraternity
High Honors Helianthus Literary
Society
- Ivan Barker
Chapter Treasurer and Sentinel
President Ichabod First Aiders
Assistant in Languages
Pi Gamma Nu
Social Science Fraternity
High Honors
Gamma Sigma Literary Society
- James W. Marlin
Chapter President
Men's Glee Club
Men's Quartet
Review Board
Press Club
Pi Kappa Delta
Y.M.C.A.
Interfraternity Council
Theology Club
Band
Krazy Kats
- Walter Brown
Varsity Football
W. Club
Athletic Board of Control
Engineers Club
House President
- Glenn Thomas
Chapter Treasurer
Delta Alpha Omega
Engineering fraternity
Secretary, Engineers' Club
Band
- Carl Richardson
Glee Club
Men's Quartet
Gamma Sigma, literary society
- Juniors*
- Charles V. Robison
Delta Alpha Omega, engineering
fraternity
Engineers Club
American Institute of Electrical
Engineers
Chemistry Club
Gamma Sigma, literary society
Cross-country
Track
- Langdon Morgan
Gamma Sigma, literary society
Football
Editorial Staff of the *Kaw*
Secretary-Treasurer, Washburn
Law Club
Captain Fraternity Basketball
Team
Krazy Kats
- Robert M. Matts
Chapter Vice President
Biology Club
W Club
Interfraternity Basketball
Chemistry Club
Krazy Kats
- Herbert A. Abmeyer
Chapter Secretary
Editor 1924 *Handbook*

THE QUARTERLY OF PHI PI PHI

Manager, *Washburn Review*
Review Board
Student Council
Secretary, Press Club
Program Chairman, Helianthus
Literary Society
Y.M.C.A.

Carmen Bottigliero
Chemistry Club
Glee Club
Ichabod, First Aiders, Honorary

Sophomores

Willis Tilton
Chemistry Club
Interfraternity Basketball
Orchestra

Alfred Johnson
Football
House President

Raymond Bushong
Y.M.C.A.
Football

Harold Shaw
Krazy Kats

Wimberly Perry
Orchestra
String Quartet

Walter W. Urban
Football

Dorr Pelton
Treasurer, Engineers' Club
Secretary of Delta Alpha Omega,
Engineering fraternity

William Blair Branham
Chemistry Club

Merton French
Chapter Officer
Y.M.C.A.

Gamma Sigma, Literary Society
Krazy Kats

Willard Gossett
Track
W Club
Delta Alpha Omega, engineering
fraternity
Engineers' Club
Krazy Kats

Albert Marlin
Band
Glee Club
Men's Quartet
Dramatic Club
Krazy Kats

Pledges

Harold McKay
Glee Club
Y.M.C.A.

Joseph A. Pappalardo
Interfraternity Basketball
Football
Glee Club
Honors

William H. Flickinger
Gamma Sigma, literary society
Krazy Kats

Walter Davis
Varsity Football
Chemistry Club
Engineers' Club
Interfraternity Basketball

Gordon Taylor
American Institute of Electrical
Engineers

Walter Rogers
Interfraternity Basketball

THE QUARTERLY OF PHI PI PHI

Robert Martin
Engineers' Club.

ZETA

Seniors

Fred M. Evans
President of the Commerce Club
Alpha Kappa Psi
Commerce Advisory Commission
Chairman of Admissions in
Varsity Exposition
Circulation Manager, *Commerce Magazine*

Lester F. Malzahn
Commerce Advisory Commission
Commerce Club
Press Club
Advertising Club
Philomathia, literary society
Foreign Advertising Manager of
the *Daily Cardinal*
Ad staff of the *Commerce Magazine*

Karl Freck
Commerce Advisory Commission
Staff of *Commerce Magazine*
Accounting Manager of the
Varsity Exposition
Baseball

Arthur R. Tofte
Ad Staff, *Commerce Magazine*
Ad Staff, *Literary Magazine*
Advertising Club

Earl E. Payton
Agricultural Literary Society
Saddle and Sirloin Society
Poultry Club
Class Wrestling
Editorial Staff, *Country Magazine*

Belmont Schlosstein
First Regiment Band
Chapter Officer

George W. Graham
University Section, A.S.M.E.
Pistol Club
Chapter Officer

Melville O. Bright
Philomathia Literary Society
Chapter Officer

Russel J. Russow
Vice President American Society
Agricultural Engineers
Intercollege Crew
Editorial Staff, *Country Magazine*

Juniors

Keith McCutcheon
Chapter Secretary
Charles E. Nelson
Chapter Officer

ETA

Seniors

Allen Austin
School of Arts and Sciences
Editor-in-chief, *Utah Chronicle*
Publicity Manager, Hiking Club
Presidents' Club
Sigma Delta, journalism fraternity
Interfraternity Council
Student Chapter, A.I.E.E.
U-Topian Club
Chapter President

Walter Kershaw
Chapter Vice President
Clarence S. Barker
Sigma Upsilon, literary fraternity
Vice President, English Club
Reporter, *Utah Chronicle*

THE QUARTERLY OF PHI PI PHI

Seth W. Pixton
 President, Student Chapter,
 A.I.E.E.
 Scribe, Theta Tau, engineering
 fraternity
 Phi Kappa Phi, scholastic frater-
 nity
 Chapter Sentinel

Juniors

John F. Betts
 Chapter Treasurer
 Gene Laird
 Lieutenant, R.O.T.C.
 U-Topian Club
 Student Chapter A.A.E.
 Student Police
 Utah Fights Club
 Ernest Kipp
 U-Topian Club
 President, School Band
 School Orchestra
 William Cecil Ockey
 School of Commerce and Finance
 Alpha Kappa Psi, commerce fra-
 ternity

Sophomores

William H. Whimpey
 Student Chapter A.S.M.E.
 Theodore W. Long
 Editor-in-chief, *Utah Humbug*
 Editorial Board, *Utonian*
 Managing Editor, *Utah Chronicle*
 Alpha Sigma, chemical fraternity
 Sigma Upsilon, literary fraternity
 Sigma Delta, journalism fraternity
 Skull and Bones, honorary junior
 society
 Chapter Secretary

George R. Halton
 Theta Tau, engineering fraternity
 Student Chapter A.A.E.
 Dean Starr
 U-Topian Club
 Secretary-Treasurer, School Band
 University Orchestra

THETA

Seniors

Lloyd K. Wood
 Chapter President
 Phi Delta Kappa, educational fra-
 ternity
 Zeta Xi, agricultural fraternity
 Oliver Vickery
 Chi Alpha, professional finance
 fraternity
 Assistant editor of *Commercial*
 Assistant Manager Gym Team
 Greek Theater Staff
 Staff, *The Daily Californian*
 Daniel F. Trussel
 Chapter Officer
 Agricultural Club
 Associated Federal Students Club
 Emile Sikora
 Circle X Society
 Commerce Association
 Manager Soccer Team
 La Rapiere Club
 Varsity Fencing Team
 William A. Montgomery
 Chi Alpha, professional finance
 fraternity
 Phi Chi, medical fraternity
 Manager Gym Team
 Chairman, Elections Committee
 Intramural Sports Committee

THE QUARTERLY OF PHI PI PHI

President, U. of C. Premedical Association	Fred E. Mau
Circle C. Society	Commerce Association
John J. Judge	Associated Federal Students Club
Staff, <i>Commercialia</i>	American Legion
Associated Federal Students' Club	
Commerce Association	<i>Juniors</i>
Newman Club	Harold Winham
Chi Alpha	Sigma Gamma Epsilon, professional mining
The American Legion	Rally Committee
	Boxing Squad
John Tate Laning	Freshman Crew in '23
Phi Beta Kappa	Mining Association
Tau Kappa Alpha, forensic honor society	Elvery Loynd
	Varsity Boxing Team
John E. Wiese	Lucian D. Hertert
Delta Theta Phi, legal fraternity	Premedical Dance Committee
Phi Beta Pi, medical Fraternity	Secretary, Premedical Association
University Welfare Council	William A. Gardiner
	Sigma Gamma Epsilon, professional mining society
Harry W. Witt	Interfraternity Handball
University Chapter, Associated Advertising Clubs of the World	Staff, <i>California Engineer</i>
Staff, <i>The Daily Californian</i>	Mining Society
Commerce Association	Cecil A. Reichman
Chi Alpha	Chapter Officer
Chapter Treasurer	Robert W. Burgess
Raymond G. Stanbury	Member Elections Committee
Delta Sigma Rho, forensic fraternity	Howard Parker
Delta Theta Phi, legal fraternity	Varsity Boxing Team
Elections Committee	Bernhardt Baumeister
Senate Debating Society	Premedic Association
Varsity Debating Team against the Oxford University Debating Team	Manager Junior Soccer Team
	University Masonic Club
Stone Crane	1926 Football Squad
President, Southern States Club	Chapter Secretary
University Welfare Commission	Karl Brenner
	Commerce Association

THE QUARTERLY OF PHI PI PHI

Emile W. Hanson
Intramural Athletics

Sophomores

Eugene E. Biggerstaff
Varsity Glee Club
Little Theater Players
Y.M.C.A. Cabinet

William J. Loynd
Commerce Association
Intramural Sports

John W. Thornton
Track Squad
Y.M.C.A. Cabinet

Leland B. Groezinger
Prelegal Association
Chapter Vice President

Francis Blanchard
Varsity Glee Club

Freshmen

James E. Smith
Freshman Glee Club



DELTA CHAPTER'S NEW HOUSE
305 East Green Street, Champaign, Illinois

CHAPTER BREVITIES

ALPHA—NORTHWESTERN UNIVERSITY

During the mid-semester vacation period, the chapter home was re-decorated and a few articles of furniture added so that we are prone to want to remain around the fire-side, especially these early spring days and evenings when the sharp breeze from off the lake adds to the attractiveness of burning logs in the fireplace.

Since the beginning of the current semester we were all looking forward to the annual formal which was held on March 21. The party was given at the Belden Hotel, in Chicago, and was a dinner dance. The alumni of the chapter turned out in full force and with the active chapter, there were about seventy-five present. The surprise feature was in the announcement of the engagements of four of the members of the active chapter. This coming so early in the spring we are beginning to wonder what the toll will be by June. The statistics are:

Earl Tiffany to Margaret Fuller.

"Russ" Allen to Cleone Lundquist.

"Ray" Todd to Ruth McIntyre.

"Ted" Ross to Winifred Kibby.

The varsity football squad has been leading a strenuous life since spring training began, the chapter being represented by "Chuck" Owings and "Bob" McManus, and when the autumn practice starts "Wes" Herring will be out. Herring is

the chapter "hope" for one of the backfield jobs. Baseball is now demanding the attention of Herring, and Joe Dessert is on the wrestling squad.

The Northwestern Glee Club has just about taken the Lea brothers from us. First they made a trip to the Pacific Coast, where they visited Theta Chapter. Since then they have made numerous trips to points nearer home.

Dramatics seem to be most alluring to Kiesow and "Hank" Lea and at present they are active in the plays that the German Club is producing.

BETA—UNIVERSITY OF CHICAGO

With term examinations all over and a feeling that we were successful, we are now turning our thoughts to the affairs of the last lap of the school year. The term also marks the end of undergraduate life for eleven of the active chapter for they will graduate in June. This is our largest senior class and the loss will be felt keenly when they leave. However, we have taken means to fill the gap in the ranks caused by graduation. Since most of our alumni will continue to live in Chicago we shall have the benefit of their counsel and support.

The chapter feels that they are continuing to acquire their share of honors on the campus, for we have had seven members elected to honor-

THE QUARTERLY OF PHI PI PHI

ary societies. Beta Epsilon, the honorary social service fraternity which corresponds to the student councils in other institutions, has awarded membership to Martin Carlson. This gives the chapter two members which is most unusual since many of the organizations are not represented.

The university has recently entered upon a campaign to raise a fund of \$17,500,000 to be used in making the university bigger and better. Considerable success has crowned the efforts of the committee and they are now ahead of the quota for this period. Brother "Jimmy" Root is doing all the illustrative work in connection with this drive. "Jimmy's" work will go to the four corners of the world.

Brother Mel Jones received his degree at the convocation of March 17 and is now busy building a racing car which he will drive at the Indianapolis races this spring. Mel has had considerable experience in automobile racing and in building cars so we hope to see his car across the line a winner in this big race.

During the week of March 30 to April 4, the annual interscholastic basketball tournament was held at Bartlett Gymnasium. For this year, the chapter had as their guests the basketball team from St. George, Utah. The team was composed of Captain Lund, Reed Blake, Melvin Fawcett, Emerald Cox, Glen Crossley and James Andrus. Coach Whitehead, D. C. Watson and Jack

Christenson accompanied the team. The team was a prize winner, receiving a shield and the players gold basketballs watch charms. As St. George is sixty miles from a railroad, from stagecoach to clanging cars and pulsing life of Chicago is quite a leap, so we are sure that our visitors enjoyed their experience here.

In current activities, "Bob" Jackson has been elected to the business staff of *Phoenix*, the university humor magazine; Brothers Fruehling and Anderson were members of the Varsity Glee Club, the headline attraction at the Tivoli Theater. Brother Fruehling made quite a name for himself as cheer leader during the act.

The Blackfriars are busy in their preparations for the presenting of the annual university play. This year we have Brothers Root, McDonald and Jackson lined up for parts in the cast. This will be the twentieth annual presentation and this production has unfailingly commanded the attention of Chicago citizens and press.

We continue to be well represented in the service, for Captain Art Doegemueller of the R.O.T.C. was a member of the committee responsible for the success of the military ball given at the South Shore Country Club on April 17. In the other branch, Brother Carlson has been recently appointed to the rank of lieutenant, junior grade, in the United States Naval Reserves.

THE QUARTERLY OF PHI PI PHI

GAMMA—ARMOUR INSTITUTE OF TECHNOLOGY

At the present time the house is proud to give mention to the fact that it has nine honorary men representing five honorary fraternities. Of this number we have two in Chi Epsilon, civil engineering; one in Salamander, fire protection engineering; one Tau Beta Pi, general engineering; one Pi Tau Sigma, mechanical engineering, and last but not least we have four members of Sphinx who have won that rare distinction through their efforts in connection with the college annual, the *Cycle*. Closely allied with Sphinx is the Press Club, the purpose of which is to train men to fill positions on the school publications. Eight members of Gamma are members of this club, three of whom hold offices of vice president, secretary and treasurer, respectively. This would seem to indicate that the men of Gamma are tending to broaden their minds in other directions than engineering.

Athletics has always been a long suit with the men of Gamma. The varsity basketball squad this past season had three men from Gamma. At the present time we are looking forward to the baseball season. We have at least a half dozen men trying out for the team. It might also be added that the captain of this year's team is a Gamma man. With the advent of spring the track men of the house are fast coming into

their own. Several of our freshmen give promise of being stars of the cinder path. Among the minor sports Gamma is well represented. The captain of the swimming team and two other members of the team hail from Gamma and one of our frivolous freshmen took the tennis championship cup last fall despite the keen competition. Incidentally, the boxing champion is a member of Phi Pi Phi.

Gamma also has her usual quota of men filling positions in class offices and the various engineering societies.

In interfraternity activities Gamma has always been able to hold her own. We have again been successful in carrying off the cup in interfraternity basketball for the seventh consecutive year. Through the united efforts of about fifteen of our men, we were able to win four out of five hard-fought games. Gamma is especially fortunate in that half of her men are capable of playing basketball. This spring, we shall lose several of our men through graduation but with the men who are left behind and the old Gamma "pep" we are sure that we can win the cup twice more, thereby making it permanently ours. As this QUARTERLY goes to press the interfraternity baseball games will be in full swing at Armour Tech. Last year we took the cup and we have material this year that gives us high hopes of capturing it again this season.

THE QUARTERLY OF PHI PI PHI

Each year about the first week in May Armour has junior week which is always finished up by an interfraternity circus. It is customary to award a prize to the fraternity having the best and most original stunt. Having won the prize last year, a sheep skin with the name of the winner on it, we are bending our efforts now toward another victory in this line.

DELTA—UNIVERSITY OF ILLINOIS

The big problem of Delta has been the chapter house problem. The present home, which was purchased some years ago, proved to be inadequate and as a result we were obliged to lease a private residence located across the street. Shortly before the end of the first semester, we located a very good house and set about to finance it. During the few days between semesters, we raised \$5,000 in cash and made the initial payment. Proceeds from the sale of the old home will also be applied, which will reduce the indebtedness somewhat. The new home will provide ample quarters for thirty-five men and is two blocks nearer the campus. Our budget will provide the liquidation of the entire indebtedness within a comparatively short time. This is, however, but temporary, for we fully expect to build a permanent chapter house a little later on.

Plans are being made now for next year and in counting the casualties, we shall lose but two men by gradu-

ation so that a very experienced chapter will begin the season next autumn. All of the present officers will be back and we are looking for the most prosperous year that we have had.

We have been paying quite a little attention to our scholastic standing and have made some progress over the past year. Much room for improvement is possible and with our house problem settled, we are laying special stress on our scholastic work.

In activities we continue to receive our share of honors. Brother Powers has been recently elected captain of the 1926 varsity basketball team and also elected to Sigma Tau. Brother Lewis has a very good chance of being elected as senior intramural manager for next year. Brother Kirsch, who is on the staff of the *Daily Illini*, will probably be the senior sports editor next year. Brother Wilcox was secretary of the Hoof and Horn Club last semester and is vice president this semester. He is chairman of the Livestock Show committee, Ag round-up committee, placed third in the stock judging contest and will be a member of the stock judging team next year. He has also found time to write a number of articles for the *Illinois Agriculturist*. Lyman Kimmel is one of the track team's best shot-putters and is certain to win his I this spring. At the Big Ten Conference meet at Northwestern he placed fourth. Brother Winsauer is chairman of the social committee of

THE QUARTERLY OF PHI PI PHI

the Reserve Officers Club and was a member of the decorating committee of the Arch. Fête. Hubert Riggins is out for freshman varsity track and is fairly sure of his numerals. He is a half miler. William Jost is one of our most active freshmen. Besides holding down a berth on the freshman varsity track team, he is out for tennis and a reporter for the *Illini*. Bill makes good grades too.

The equipment of the university is constantly being increased and during the last year work was started on a student hospital, library, gymnasium and Commerce School building, all of which will be ready for use this calender year.

EPSILON—WASHBURN COLLEGE

Washburn stepped in the limelight and obtained the national basketball honors in the recent national tournament. As a consequence we all enjoyed nearly a weeks holiday, though it was only intended that we have one day. "Herb" Abmeyer, who edits the *Review* critic column began to wonder whether he was to continue to be a member of the student body, as a result of his comments regarding the handling of the celebration. "Herb" is still with us and the college, as a result, has more college spirit than before.

Our annual spring formal will be given at the Topeka Country Club on the evening of April 17, and will be in the nature of a dinner dance.

Besides our faculty members, we shall have as our guests, President and Mrs. Womer and the dean of women. To all alumni of other chapters known to us as living nearby, we have sent invitations and hope that they will be present. This event occurs so near to the annual date of Epsilon's founding that it has more than the usual interest.

Epsilon won the interfraternity council scholarship cup and we are exerting our influence to maintain our present rank. Brother Strain has been offered a scholarship at the University of Wisconsin for next year. The scholarship calls for graduate work in political science, and carries free tuition and \$250.

While we have four members in the W Club we are in hopes that we will be able to increase our numbers. Langdon Morgan is sure of a berth on the varsity nine and Pappalardo and Menard, two pledges, are working hard for places.

Epsilon hopes that during the summer vacation they will be able to secure another chapter home. The present home is becoming too small to meet the needs of the chapter and is somewhat distant from the campus. Plans have been made to finance a new chapter home to be erected on the campus in the near future. The college has perfected arrangements whereby it will lease the ground at a very nominal figure and will advance a sum equal to that raised by the fraternity chapter to build the home. The thought is



OUR LETTER MEN AT WASHBURN

Reading from left to right: Willard Gossett, Robert Matts, Walter Davis, and Walter Brown.

Willard Gossett made his letter in track last year. He is a quarter miler and was also a member of the mile relay team. His time on the quarter mile last year was 52 $\frac{3}{10}$.

Robert Matts earned his letter in track in 1923 when he participated in the Washburn-Ottawa dual track meet, taking firsts in discus and shot put.

Walter Davis, a freshman, earned his football letter last fall as a guard on the varsity. Although only seven quarters were required to earn a letter Davis played in twenty-three quarters. He shows promise of developing into a valuable man for future Washburn grid teams.

Walter Brown won his third letter in football last fall, playing guard and tackle on the varsity. Brown is the biggest man on the team and when he throws himself into a play it always means trouble for those who get in his way.

that the home should cost in the neighborhood of \$40,000 to \$45,000. So far, none of the fraternities have taken advantage of the offer though some of the sororities have homes erected under this plan.

We are very sorry that the end of the present school is so near to a close for we shall lose our dean. Dean Zampiere has resigned from his post in the College of Liberal Arts, and while his plans have not been made known, they call for his departure from Washburn. The Dean and Mrs. Zampiere have grown very close to us and we shall miss them greatly, especially at our Monday night dinners which they have regularly attended.

ZETA—UNIVERSITY OF WISCONSIN

On April 3 a military ball was held with Zeta Chapter well represented. Twelve of the members made up a party, and had a box for themselves. The state legislature is expected soon to vote down the use of the capitol for university functions, and this will probably be the last one to be held in this beautiful building.

Plans for a spring formal on May 1 are under way, and as this is very near the date of Zeta's first anniversary it is taking on the name of a "birthday" dance. It is hoped that if it is at all possible, members of the other chapters can attend as Zeta's guests for the occasion.

About April 1 the lakes of Madison cleared of ice and the crew went

to the water. Last year at Poughkeepsie, Wisconsin rowed in to a second place. This year we are pulling with them for a first place, and are especially hopeful because one of our boys, George Houdek, has been manipulating an oar in the first shell in the first practices on Lake Monona.

After spring vacation, the university will hold its Exposition which comes but once every four years. This is the biggest single undertaking in one's college career. Fred Evans has charge of admissions, taking care of the crowd and policing the gymnasium where the Expo takes place. Under him he has working August Einfelt, William Edwards and George Houdek, all Zeta men.

August Einfelt has been splashing around in great shape in the tank. He made the frosh swimming squad and will help keep up Wisconsin's name for swimming by going out next year.

A new athletic spirit has come over Wisconsin with the advent of George Little, the Man from Michigan. Spring football practice has already started, and it is hoped that next fall when the cardinal jerseys appear on the field a Zeta man or two will be among the wearers. Fred Evans has been out to the early practices and after the rowing season is over, Houdek will probably put on the moleskins for Wisconsin.

With the ending of the first semester we lost Mel Thomas. We

are mighty sorry to have him go, for he is one of the last of the old guard who started Phi Pi Phi, and besides, one of the finest and truest men one can find anywhere. He said in a farewell speech at the table just before he left that the advantage he had in staying in the house here with the rest of the boys was something you old timers never had, and something he truly appreciated. Mel plans on going to Salt Lake City to reside.

ETA—UNIVERSITY OF UTAH

After the Easter holidays the fraternities at Utah will be in the midst of the freshman rushing period. Owing to the rules that no freshman can be pledged to a fraternity until the middle of the last semester of the freshman year it means that we do the major portion of pledging in the late spring.

Preceding the junior prom the chapter held open house which is a tradition of the campus. During the two days preceding the prom, the fraternities and sororities of the university hold open house, the fraternities taking one afternoon and the sororities the other. Parties of students and faculty members visit each of the houses in succession. Some few townspeople, relatives of the fraternity and sorority members, and out-of-town girls who come to Salt Lake for the prom, also take part in the entertainments. Dancing is enjoyed at each house and re-

freshments are provided. The custom brings the members of the various fraternities into closer contact and promotes freshman acquaintanceship with the fraternities, since open house is the only fraternity entertainment which freshmen may attend prior to the rushing season.

We have held several dancing parties recently, one on March 14 and another on April 4. Both were informal.

The chapter has voted to adopt the insurance method of financing the proposed new chapter home. The general details of the plan are very similar to the scheme as given in C. W. Peterson's article in the January number of *Banta's Greek Exchange*.

The chapter recently won a prize that has contributed to the comfort of the members. In a sales contest conducted by the university year-book, the chapter won first prize and as a result a handsome arm chair was presented to us.

Kenneth Greene, who suffered the loss of two fingers on his right hand in a hunting accident last fall, has been unable to return to school because he cannot write yet. He is very cheerful, though, and expects to return in the spring quarter. He is now a member of our chapter.

George Halton, one of our charter members who has been working on a survey party until now, has returned to school for the winter quarter.

THE QUARTERLY OF PHI PI PHI

Because of their exceptional outside activity, Theodore Long, our secretary, and Merrill Bennion, one of our pledges, have been elected to Skai-B, an honorary junior society. The membership of this club is exclusively to those who have a considerable record in student activity. Allen Astin and Theodore Long have been instrumental in organizing on the campus a new journalistic fraternity known as Sigma Delta. Ernest Kipp has honored our fraternity by being elected president of the University band. Ernie is a very talented cornet player and is a member of several orchestras.

Another of our charter members, Thorvald Johnson, is working in Salt Lake instead of going to school.

THETA—UNIVERSITY OF CALIFORNIA

The progress that Theta has made during the year has been very gratifying to all and we feel that our prospects for the future are very bright. With but one or two exceptions, every man in the chapter has entered some form of activity and this has not been done at the expense of our scholastic standing. For the first semester, we ranked twenty-two in a total of sixty-two organizations. Not only have we reached a place of importance among the other fraternities, but we have enjoyed the good will of the officials of the university, particularly that of the president and the dean of men. In addition, two prominent members of the faculty have accepted

membership in the fraternity. Dean William Kemp and Professor Fred Griffin are our two new brothers and already their experience and interest has left its impression.

Early in the year Brother Harry Witt composed the song "Golden Chains of Phi Pi Phi," and we have adopted it as one of Theta's songs. We hope that we shall have some more of Brother Witt's inspiration and that it will also induce some of the other literary members to enhance our songbook.

In the field of interfraternity sports we have not been idle. The chapter was well represented in the interfraternity basketball tournament and we are hopeful of winning the cup. Certainly, we shall place well. In handball, Brother Groezinger has been carrying the colors and started off with several "wins." Brother Sikora, who is a member of the varsity fencing team and won four out of five matches against Stanford last year, is starting out in the same manner again this year.

We have had several social affairs. Our formal initiation was held at the chapter house on February 14 and was followed by a formal banquet at the States, in San Francisco. On February 8, a tea was given to the parents and was very well attended. One of the results of this event was the suggestion of the formation of a mothers' organization and steps have been taken toward its formation. The most important party of the present season was the

THE QUARTERLY OF PHI PI PHI

formal dance which was held at the Palace Hotel, in San Francisco, on the evening of April 3. Open house was held on the Sunday afternoon preceding the formal.

During the recent tour of the Northwestern University Glee Club we entertained Brother Henry and Richard Lea of Alpha Chapter. We enjoyed their visit very much and hope that we may have the pleasure of having members of the other chapters pay us a visit.

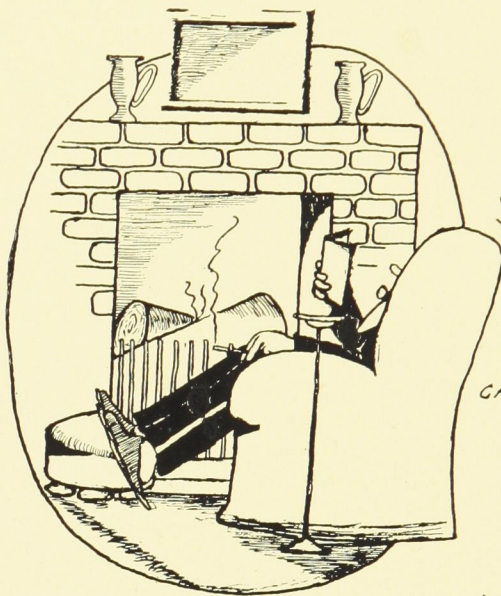
The alumni of Theta Chapter have perfected an organization which will mean much to the active chapter and as there are about fourteen seniors who will graduate, we shall soon have a very large organization of alumni. Many of the seniors will continue to make their home near to San Francisco.

The university year is nearing its end for finals will be completed by

May 4, then comes commencement and the summer vacation. While our year ends earlier than at most universities, it also begins about a month earlier. The first semester will begin about August 15.

We were very agreeably surprised when the marriage of Brother Robert Dorsey Maclay to Mary Claire Weaver was announced. The bride is a daughter of Mr. and Mrs. Philip Weaver, of Honolulu, and Wailulu. She is a sister of Ida Weaver, a student in the Medical College of the University of California. Mrs. Maclay is a niece of Rudolph Banning, well-known sugar man. Mr. and Mrs. Maclay have gone to Okanogan, Washington, where they will make their home. Brother Maclay is junior forester of the Chelan Forest and graduated from the University of California with the Class of 1923.

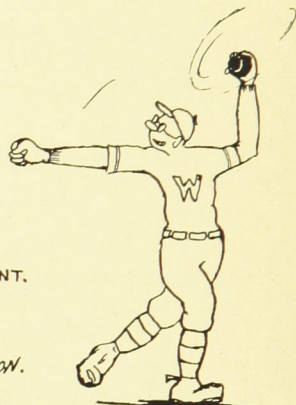
A BRIGHT LEIGHT AT ZETA



WE KNOW
YOU WOULD
LIKE TO
SEE ZETA'S
NEW PRESIDENT.

←
HERE HE IS—
←

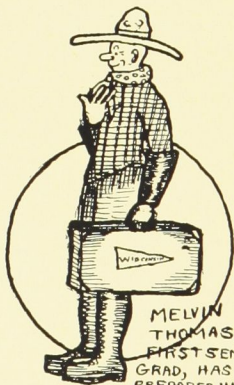
CHARLES E. NELSON.



KARL A. FRECK—
CAN PITCH BASEBALL
WITH EITHER ARM. IS A
SPLENDID PROSPECT FOR
COACH LOWMAN'S TEAM FOR
THIS SPRING.



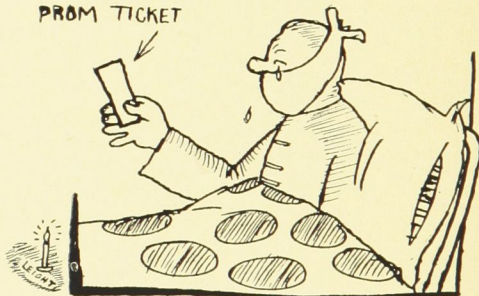
KEITH MCCUTCHEON, ZETA'S PIANIST.



MELVIN
THOMAS,
FIRST SEMESTER
GRAD, HAS
PREPARED HIMSELF

FOR HIS TRIP TO SALT LAKE CITY
HE WILL HAVE A POSITION WITH
AN ELECTRIC POWER COMPANY IN
THE MORMON CITY.—

PROM TICKET



BROTHER PAYTON CAME DOWN WITH THE
MUMPS AND WAS UNABLE TO ATTEND
WISCONSIN'S "PROM TO REMEMBER".

AMONG THE ALUMNI

ALPHA CHAPTER

From the "land out beyond" come echoes of the voices of men that "once had been."

A mournful chorus bears in upon the wind the tidings that already two good men have fallen by the wayside. Brothers William Farley and Vincent Thompson are married and hopelessly enamored of their spouses.

On the other hand, "Bill" Farley and "Tommy" Thompson both contend that now they realize life heretofore hasn't really been worth living. They say that these cynics are peeved because in both cases the marriages were "sprung" upon them as surprises, being announced sometime after the marrying ceremonies had taken place.

"Bill" Farley is now engaged in concrete construction in Chicago. He and the "Missus" make their home at the Sheridan Beach Hotel in Rogers Park.

"Tom" Thompson is advertising manager for the Colgate and Company Laundry Sales Division, and he and Mrs. "Tom" also live in Rogers Park.

And it is being rumored about that "Ted" Lundborg also is fast approaching matrimonial waters. At any rate, he says nothing but continues to learn the hotel business in Evanston.

The irrepressible Neil Wagner is now engaged in putting "pep" into

the commission fruit merchants of South Water Street. Neil can now tell the difference between a lemon and a grapefruit.

When we last heard from "Bob" Ludke, he was in Chicago, in the office of the Great Atlantic and Pacific Tea Company. "Bob" has his eye on the Far West when the A & P plans to extend greatly.

The nonresident alumni, with their addresses are:

Melvin E. Amstutz, '25, 830 Main St., Peoria, Ill. Resident Engineer, Illinois State Highway.

James E. Jobs, ex-'24, 3426 N. Meridian St., Indianapolis, Ind. Medicine, University of Indiana.

Wm. R. Nelson, '24, 2806 Mitchell Ave., St. Joseph, Mo.

Floyd Parry, ex-'25, R. F. D. 4; Box 72, Elgin, Ill. Accountant.

Wm. Edward Rideout, Alpha of Phi Rho Sigma House, Chicago, Ill. N. U. Medical School.

John A. Schmidt, '24, Phi Pi Phi House, Chicago Ill. Graduate Student at the University of Chicago.

BETA CHAPTER

Emile L. Cotton, Miami, Fla. Fruit buyer for a wholesale fruit company.

John F. Calsen, Moline, Ill. Accountant for the Moline Plow Works.

Stanley W. Nichols, 923 E. 60th St., Chicago, Ill. Auditor for the Chicago Service Co.

THE QUARTERLY OF PHI PI PHI

Donald D. Foster, 923 E. 60th St., Chicago, Ill. Salesman in Art Section of Marshall Field & Co.

Raymond F. Nilsson, 1470 E. 70th St., Chicago, Ill. Timekeeper for Swift & Co.

Chester T. Breneman, 6021 Drexel Ave., Chicago, Ill. Employed in the Auditing Department of American Steel & Wire Co.

Clarence B. Wicker, Almena, Kan. Assistant Cashier of Almena State Bank.

John H. Meade, c/o Halsey-Stuart, Milwaukee, Wis. Employed at Milwaukee Branch of Halsey-Stuart.

Members in the Graduate School, University of Chicago:

John William Schimdt. Graduate of Northwestern University.

Fred Lehman. Graduate of the University of Illinois.

GAMMA CHAPTER

Members who graduated or did not return to school this semester are the following:

E. J. Biever, 3131 S. Michigan Blvd. Commonwealth Edison Co.

J. R. Brady, 7761 South Shore Drive. Illinois Steel Co.

E. Christenson, 5123 Crystal St.

J. Citta, 2222 S. 63rd St., Berwyn, Ill. Barret & Co.

R. P. Greenlee, 3131 S. Michigan Blvd.

H. A. Groustra, 23 W. 109th St.

D. H. Hazel, 117 W. Ann St., Flint, Mich.

J. V. Hogan, left no address.

E. W. Husemann, 8545 Sangamon St.

F. E. Jarvis, 3131 S. Michigan Blvd.

R. Lowe, 2600 W. Division St. H. L. Stevenson Co.

G. A. Morgan, 610 W. 55th St. Peoples Gas Light & Coke Co.

H. E. Niksch, Left no address.

N. B. Olson, 836 N. Laramie Ave. Yellow Coach Mfg. Co.

E. J. Terry, Baraboo, Wis. Wisconsin Inspection Bureau, Wausau, Wisconsin.

A. C. DeHaan, 9410 Champlain Ave. Standard Oil Co.

W. E. Johnson, 4216 N. Paulina St.

S. L. Chaney, 3131 S. Michigan Blvd. Teacher, Chicago High School.

DELTA CHAPTER

M. F. Anderson, 6246 Harper Ave., Chicago, Ill. Draftsman, Illinois Central Railroad.

G. F. Baird, Y.M.C.A., Dayton, Ohio. Research Laboratory General Motors Co.

H. E. Balbach, 6246 Harper Ave., Chicago, Ill. Swift & Co., Advertising Department.

C. J. Collins, 1616 Wabash Ave., Mattoon, Ill. Instructor in Mathematics, Mattoon High School.

C. D. Edmons, Mt. Carroll, Ill. Highway Department.

F. W. Jacobs, 912 Belden Ave., Chicago, Ill. Schultz Bakery.

L. J. Jones, 221 S. Scoville Ave., Oak Park, Ill. Hill Packard Co.

THE QUARTERLY OF PHI PI PHI

A. H. Labahn, 1522 Jarvis Ave., Chicago, Ill. *Daily News*, Advertising Department.

F. G. Lehman, 6843 Dorchester Ave., Chicago, Ill. Sanitary District, Chicago, Ill.

W. H. McKinney, 4355½ N. Ashland Ave., Chicago, Ill. Atlantic & Pacific Tea Co.

H. T. McNamara, 847 N. Michigan Ave., Chicago, Ill. Sprague Warner Co.

A. K. Miller, 3131 S. Michigan Ave., Chicago, Ill. Graduate Work at Armour Institute of Technology.

F. M. Muller, 825 Buena Ave., Chicago, Ill. Brochon Co., Salesman.

W. H. Pfeiffer, 104 E. Green St., Champaign, Ill. University of Illinois Research Laboratory, Urbana.

R. S. Reamer, 4859 Fountain Ave., St. Louis, Mo. Warner Chemical Co.

A. V. Samuelson, 8024 Langley Ave., Chicago, Ill. Victor Samuelson Furniture Co., Manager.

E. L. Sherertz, 823 S. Buchanan Ave., Marion, Ill. County Engineer Highway Department.

R. H. Weston, Bush Brick Co., Nashville, Tenn. Bush Brick Co., Nashville, Tenn.

EPSILON CHAPTER

Laverne Morris, 1346 30th St., Des Moines, Iowa. Taking postgraduate work at Drake University; preaching.

William McDowell, Muscotah, Kan. Preaching.

INACTIVE

Earl Engler. Traveling for his health in the Southern States.

Gaylord Hogle. Attending Strickler's Business College in Topeka, Kan.

ZETA ALUMNI

A. E. Niebuhr, Owl Drug Co., Milwaukee, Wis. Employed at Owl Drug Co.

Harvey H. Karnopp, 501 Bell Telephone Bldg., 418 Broadway, Milwaukee, Wis. Accounting Department, Bell Telephone Co.

Stan Hetland, West Bend, Wis. Promotion Department, Amity Leather Co.

George Hrubesky, Menasha, Wis.

Harold Smith, 5804 Race Ave., Chicago, Ill. Accounting Department, Western Electric Co.

Royal Coates, E. J. Thomas and Ralph Carlyon, General Electric Co., South Bend, Ind.

Melville Thomas, Newcastle, Neb. Utah Power and Light Co., Salt Lake City, Utah. Engineering Department.

ETA CHAPTER

Walter C. Green, '24. Working on Ph.D. degree, University of Michigan. Address: 912 Monroe, Ann Arbor, Mich.

Adrian J. Gray, ex-'26. Attending New York University. Address: 549 W. 113th St., New York, N. Y.

Joseph T. Lindsey, '24. Employed by Utah Light & Power Company, Salt Lake City. Address: 340 M St., Salt Lake City, Utah.

THE QUARTERLY OF PHI PI PHI

Kimball Anderson, ex-'26. Working on his father's farm in Alberta, Canada. Address: New Dayton, Alberta, Canada.

Thorvald Johnson, ex-'26. Working for Keeley Ice Cream Co., Salt Lake City. Address: 128 College St., Salt Lake City, Utah.

Kenneth S. Greene, ex-'26. Convalescing from injuries received in hunting accident last fall. Address: 30 Coatsville Avenue, Salt Lake City, Utah.

THETA ALUMNI

Where they are and what they're doing:

George Blowers, ex-'25, is with the Standard Oil Co. at Hayward, Cal. Box 481, Hayward, Cal.

Ralph Follett, '26, is working at Palo Alto, Cal. R. F. D. 1.

Bill Kessler, '23, is employed at the Miracle Mfg. Co., San Francisco, Cal. Address: 144 Central Ave., San Francisco, Cal.

Ellerd G. King, '24, is in Los Angeles selling automobiles. Address: 144 Central Ave., San Francisco, Cal.

Leonard King, '26, is attending the University of Arizona.

Laverne Lavender, '24, is practicing law in Los Angeles.

Robert D. Maclay, '23, is with the U. S. Forest Service. Address: Okanogan, Wash.

Anson Morgan, '25, is attending Hastings School of Law, 331 Octavia St., San Francisco, Cal.

Ben Taylor, '23, is with the Internal Revenue Department in Los Angeles. 322 W. 53rd St., Los Angeles, Cal.

Glen Sturdivant, '23, is taking postgraduate work at the University of Arizona.

Graham Hockett, '23, has returned from the Harvard Graduate School of Business and is now at Linnton, Ore.

Ralph Cassady, '24, is selling bonds with Shingle Brown and Company in San Francisco. Address: Theta Chapter.

Maurice A. Buckley, '23, is teaching mathematics. Address: Bakersfield High School, Cal.

Phil Silver, '23, is assistant to Judge Walters in Los Angeles. Address: 1318 E. 23rd St., Los Angeles, Cal.

Walter A. Petterson, '24, is with the Standard Oil in the accounting department. Address: 62 Sanchez St., San Francisco.

Walter Powell, '25, expects to return to college in the fall.

Harold J. Ralph, '24, is now doing public accounting work in San Francisco. Address: Theta Chapter.

Alkin Rosslow, '24, is with Ernst and Ernst. Address: 670 Twenty-eighth Ave., San Francisco.

William L. Seavey, ex-'26, is with the Hood Rubber Co. Address: 585 Howard St., San Francisco.

Leonard Gay Stevenson is with Foster and Kleiser. Address: 23 Palm Ave., San Francisco.

THE QUARTERLY OF PHI PI PHI

PLEDGES SINCE THE LAST ISSUE OF THE "QUARTERLY"

ALPHA

<i>Name</i>	<i>Home City</i>
Harold F. Enright	Chicago
J. Edward Wilcox	Chicago

BETA

William J. Davis	Rice Lake, Wis.
Franklin P. Mason	Wheeler
John C. Dinsmore	Chicago

GAMMA

Karl C. Anderson	Chicago
Harold Burke	Chicago
George J. Jennings	Chicago
Lawrence J. Marhoefer	Chicago
Robert N. McFerran	Evanston
Theodore Samuelson	Chicago
G. A. Gustafson	Chisholm, Minn.

DELTA

Alfred H. Labahn	Algonquin
Lawrence A. Wilcox	Wyoming
Herbert C. Riggins	Havana
Kenneth C. O'Bryan	Little Rock, Ark.

EPSILON

Harold C. McKay	Dresden
Camden S. Strain	Topeka
Raymond Bushong	Richland

ZETA

William H. Edwards	Barron
Clayton M. Ziemann	Randolph
Victor D. Riley	Madison
Bronte H. Leicht	New Lisbon
August W. Einfeldt	Oak Park, Ill.
Earl Frank	Stevens Point
Allen J. Shafer	Stevens Point

THE QUARTERLY OF PHI PI PHI

ETA

Zalph S. Calder
Leland F. Johnson
Dean Starr
Moyle B. Peterson
W. H. Whimpey
Alfred M. Funk
Samuel L. Wheeler

Vernal
Susanville, Cal.
Salt Lake City
Sandy
Santaguin
Thistle
Springville

THETA

Ben B. Taylor
Edward E. Cassady
Frank M. Misch
Ernest E. Purcell
Emile W. Hansen
Herbert H. Mensing
Raymond G. Stanbury
Robert W. Burgess
Graham C. Hockett
Gen. E. Sturdevant,
Ralph N. Brown
Lloyd D. Fisher
T. Max Taylor

Los Angeles
Vallejo
Berkeley
San Francisco
San Francisco
San Francisco
Berkeley
San Diego
Portland, Ore.
Tucson, Ariz.
Berkeley
Berkeley
Dayton, Tenn.

YOUR OWN PAGE TO EDIT

To the Reader:

The space below is for notes about yourself and other alumni you may know. Send us news about births, weddings, deaths, change of address, business changes, political and civic activities—and tips on things that *THE QUARTERLY* should publish.

Write them down now, tear off this sheet and mail it immediately to the Secretary, A. C. Van Zandt, 15 E. Washington St., Chicago.

NAME

CHAPTER AND CLASS.....

ADDRESS

NOTE: For this good idea (if it works!) we are indebted to the *Garnet and White* of A X P.

WARREN PIPER CO.

Wholesale Jewelers

31 North State Street

CHICAGO



Official Jewelers

for

Badges, Sister Pins, Fraternity Novelties

AULD'S Inc.

Manufacturing Jewelers

225-229 North 4th St., COLUMBUS, OHIO



Official Jewelers

for

Fraternity Jewelry and Novelties

J. F. NEWMAN, Inc.

Manufacturing Jewelers

11 John Street

NEW YORK



Official Jewelers

for

Fraternity Jewelry and Novelties

