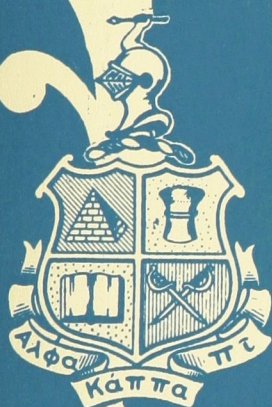


*The*  
**alpha**  
*of Alpha Kappa Pi*



VOLUME XVI

• *September* •  
1942

NUMBER 4





# The Alpha of Alpha Kappa Pi

## Just a Minute—

- DESPITE the coming of war, another college year has come to the fraternities and colleges of America. The way in which these strenuous conditions are met by the chapters will determine the value of the fraternity system and the strength of the chapters for years to come. Each chapter will have new and different problems. More inspiration, toil and faith will be necessary than ever before.
- ALPHA MU chapter at Carthage College makes its first bow in this issue of THE ALPHA. We heartily welcome this new chapter which comes with such a long and distinguished background.
- "AN OPEN LETTER TO A JUNIOR" marks the third of a series of articles written by an Alpha Kappa Pi father to his son at the beginning of each college year. It is well worth your attention in these times.
- AFTER you have read the list of "Brothers in the Service" kindly send to us the name of any brother omitted on the form prepared for this purpose. A complete list of the brothers serving our country is desired for the history and permanent records of the fraternity.

THE EDITORS

Volume XVI Number 4

SEPTEMBER · 1942

## CONTENTS

An Open Letter to a Junior .....	123
<i>Written by an Alpha Kappa Pi Father to his Son</i>	
Alpha Kappa Pi Re-enters Carthage College .....	125
<i>By Milus W. Bonker, Alpha Mu '43</i>	
The Fraternity Dollar .....	133
<i>By Frank J. Krebs, Grand Treasurer</i>	
The Adviser's Corner .....	134
Alpha Kappa Pi Highlights .....	136
Comments and Activities of Our Fellow Greeks .....	138
Brothers in the Service .....	140
Chapter News .....	143
Directory .....	146

## THE STAFF

*Editor:* C. Russell Kramer, Rho '31  
*Editorial Office:* 163 E. 111th St., New York City  
*Business Manager:* Frank J. Krebs, Iota '29, Dellroy, Ohio  
*Publication Office:* George Banta Publishing Co., 450 Ahnaip St., Menasha, Wisconsin  
*Member:* College Fraternity Editors Association

THE ALPHA is the official publication of the Alpha Kappa Pi Fraternity and is published in the months of September, December, February and April by the George Banta Publishing Co., 450 Ahnaip St., Menasha, Wisconsin.  
Entered as second class matter February 17, 1931, at the Post Office at Menasha, Wisconsin, under the Act of March 3, 1879. Acceptance for mailing at the special rate of postage provided for in the Act of February 28, 1925 embodied in paragraph 4, section 538, P. L. & R., authorized June 19, 1935.  
Subscription \$2.00 a year. Single copies 50c.  
All members of the Fraternity are invited to contribute articles and news items. Information regarding the alumni will be especially appreciated. Matter intended for publication should be in the hands of the Editor at least one month preceding the month of publication. Address all communications to 163 East 111th St., New York City.  
Change of address should be sent immediately to the Editor.





**N**ATIONAL  
**I**NTERFRATERNITY **C**ONFERENCE

*Principles of Democracy*

**T**HE COLLEGE FRATERNITY OF THE UNITED STATES AND CANADA WHICH WAS CONCEIVED IN THE ATMOSPHERE OF A STRUGGLE FOR POLITICAL INDEPENDENCE, AND CAME INTO BEING AS AN EXPRESSION OF SELF-GOVERNMENT; ADHERES STEADFASTLY TO SOCIAL, RELIGIOUS, POLITICAL, AND ECONOMIC DEMOCRACY AS THE ONLY SOUND BASIS FOR A SATISFYING PERSONAL AND NATIONAL LIFE; DEFENDS THE INDIVIDUAL'S RIGHT TO LIBERTY AND EQUALITY OF OPPORTUNITY; INCULCATES A SENSE OF RESPONSIBILITY TO SELF, TO COLLEGE, TO COUNTRY, AND TO SOCIETY; STRESSES THE SPIRITUAL VALUES OF LIFE AS THE FOUNDATION OF THE TRULY DEMOCRATIC WAY OF LIVING; SUPPORTS OUR COUNTRIES' CHAMPIONSHIP OF THE CAUSE OF DEMOCRACY;

**C**ONDEMNS ALL ACTIVITIES TENDING TO SUBVERT THE PRINCIPLES AND PROCESSES OF DEMOCRATIC GOVERNMENT; PLEDGES UNQUALIFIED LOYALTY AND DEVOTION TO COUNTRY.





# *The* ALPHA of Alpha Kappa Pi



## An Open Letter to a Junior

Written by an Alpha Kappa Pi Father to his Son

■ WELL, SON, two years of collegiate life are now behind you, and each succeeding year, I find it a bit more difficult to advise you through these annual letters. Not that I sense any spirit of difference growing between us, but that I have somehow caught the notion that you are growing-up, and therefore, for the best interest for all of us, must be counseled rather than to be told what to do and what not to do. So in this your Junior year let us emulate more the spirit of Cicero counseling with his son, rather than as a dictatorial father laying down hard and fast rules.

Let us recapitulate briefly. The Freshman year is the collegiate time for getting rightly faced and adjusted. This orientation you have mastered in a most pleasing manner. The Sophomore year, generally speaking, gives evidence as to whether or not you have found the right way of things, and, indeed, is the proving ground to show whether you will be able to continue until your college course has been completed. The close of this second year has found you to be capably efficient and well considered on the campus. Studies and extracurricular affairs have found you not lacking. It is only a well deserved courtesy that we state here that your home-folks are pleased and satisfied with your accomplishments thus far. There is not a single fly in the most precious ointment. Nothing

has happened in your experiences to cripple you mentally, physically or spiritually. The well rounded manhood is there for your third step along the pathway of your educational fitting for the future. While the old confidence is still pre-eminent in your desire and ability to continue as you have started, still let us not fail in pointing out that the Junior year is really the crucial year of your collegiate endeavors.

Before going further let us turn aside long enough to mention the Great War, not to discuss the war, but only to bring to your mind the solemn truth that, knowing the background of your family adherence to the American principles, even running back to the earliest Colonial days, there may be a complete break in your collegiate preparations. For if and when you reach the age of actual participation, we know there will be no slightest desire on your part to hold back your service to your country, nor to escape your full and responsible participation. Meanwhile, and until such time arrives, let me urge you to make the most of your opportunities so that a finer fitness may be yours when our Country's necessities calls for your support and your sacrifice in rendering such service.

But back to the letter in hand. Let me stress that now is the time when you should and must be settling in your own mind what work



you desire most to follow when college years are passed. Here is a most momentous problem, for as you decide, so to a great extent shall your after years be rated.

It is also needful at this point for you to know that more and more a discerning public bestows honor only on those persons deserving honor. Never take the false stand that you might be able to secure honor through self-willing it. It might be well to take as your guiding motto those words inscribed on the shield of the Prince of Wales, "I Serve." Only through service do we achieve most surely, and through service do we discover the finest satisfaction. So in reaching out, in this your Junior year, do not fail to hold in mind the high goal that is marked with service. To this end let us name the three traditional professions of Law, Medicine and Ministry, as well as the many open fields in the World of Industries. We name these activities, but do not discuss them other than to warn of the hidden dangers that often trip us up, when, with an eye too closely set to crass commercialism, we make the choice of our life work. Very much as

you reach your decisions this present year will your future endeavors be colored.

Not hurriedly, but carefully, and with the noblest ideals, you should begin to map your future course and to determine where and how your influence shall count when your days in college have ended. Here is the one big challenge of your third or Junior year.

Perhaps it might help you to think straight and to reach the right answers if we were to set before you the ideas of two keen and cultured minds.

David Grayson: "I do not have to make over the universe; I have only to do my job, great or small, and to look often at the trees and the hills and the sky, and be friendly with all men."

Charles Kingsley: "There are two kinds of freedom; one is false, where a man is free to do as he likes; the other which is true, where a man is free to do as he ought."

May your Junior year prove as profitable, and in an even more knowing way, than your Sophomore and Freshman years, which indeed were wholly successful to yours truly, and the members of the immediate family.

## Roll Call for A K Π Brothers in Service

We are maintaining a service directory which will also be used as a basis for the history of A K Π Brothers in the present World War. The list of Brothers in the service grows every day. We want the directory and history to be as complete as possible, so if you are in the service, if you are going in the service, or if you know a Brother who is in the service, please help us by filling in and returning this form to the Editors.

Name ..... Chapter ..... Class .....

Rank ..... Branch of Service .....

Date of Entry into Service .....

Permanent Mailing Address .....

Service Address .....

**Clip and mail to the Editor, 163 East 111th Street, New York City**



# Alpha Kappa Pi Re-enters Carthage College

## Alpha Mu Chapter Succeeds Zeta Chapter After 15 Years

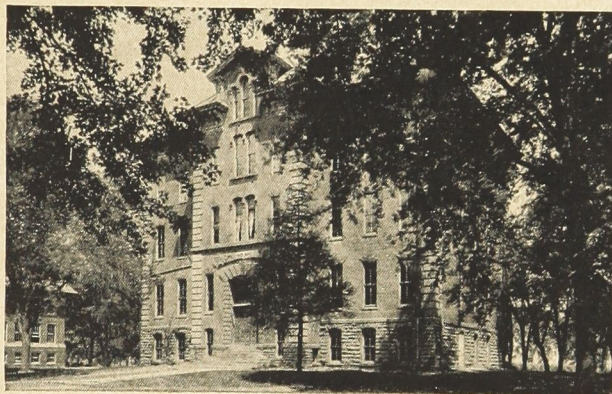
*By Milus W. Bonker, Alpha Mu '43*

### Carthage College

CARTHAGE COLLEGE was founded in the year 1870 to meet the need of the Lutheran Church in this section of the Mississippi Valley for an institution of

the historic "Old Main" from out of whose doors the seniors march each June to take their last walk down the traditional Evergreen Walk.

In 1873 Dr. David L. Tressler became the



"OLD MAIN," CARTHAGE COLLEGE

higher learning. It was the successor of similar schools at Hillsboro and at Springfield, Illinois. Carthage was selected as the location of the new school by a commission appointed by the several synods of the Lutheran Church of Illinois and adjacent states.

Thus it was in 1870 that the history of Carthage College began. Professor L. F. M. Easterday was the first teacher; a kindly man whose chief joy was imparting his knowledge to others. Only sixteen students attended that first class meeting held in the Burbank building on the village square. On May 10, 1871, the cornerstone of the first building on the campus was laid. This was

first president of the college; the institution began to function as a fully equipped liberal arts school, and the love and confidence of the community were hers. Four students graduated in 1875 as the first of the long line of distinguished young people who as Carthage College alumni have carried the name of the Christian college all over the world, to India, Africa, China, Alaska, Madagascar, Porto Rico, and South America.

After the untimely death of President Tressler in 1880, there was a time of change and depression. It was during this period that Mr. Henry Denhart became interested in the college. His generous gifts and the benefactions of others made possible the in-

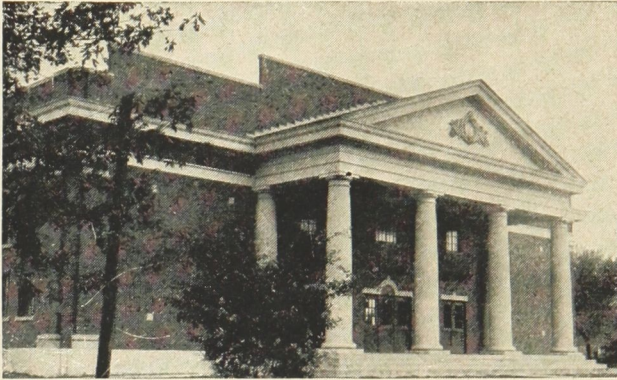


creased physical plant of the college and its greatly enlarged endowment fund.

The college's aim is to serve the needs of her young people. To do this she promotes many extra-curricular activities. The famous A Cappella Choir is dear to the heart

in football, basketball, track, and tennis. Every student has an opportunity to do the creative work he enjoys the most.

Carthage College endeavors to foster the Christian spirit which will permeate the life of its students and manifest itself in all

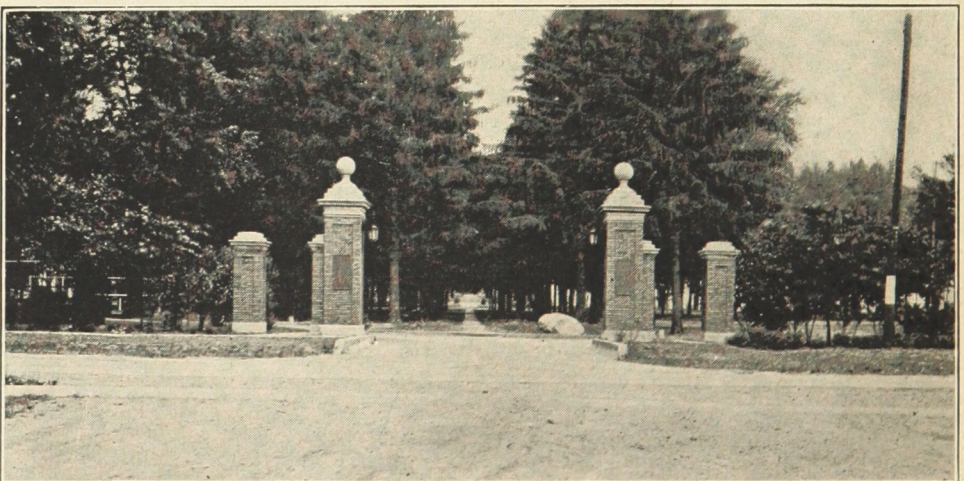


FIELD HOUSE, CARTHAGE COLLEGE

of every student and alumnus. It has made an enviable record for itself in musical circles and every annual tour it broadcasts over the National Broadcasting System on a nationwide hookup. It also has membership in national scientific, forensic, musical and literary organizations and has various social and religious groups on the campus. Carthage College has always maintained an excellent athletic record, having varsity teams

their relationships. Being a church-related college, it is also aware of its responsibility to train men and women for evangelical leadership and tries to discharge this task accordingly.

Early in the history of the accrediting of colleges by universities and by agencies like the North Central Association, Carthage College obtained recognition. By the University of Illinois, she is fully accredited in Class



MEMORIAL ARCH AND EVERGREEN WALK FORM MAJESTIC ENTRANCE TO CARTHAGE COLLEGE

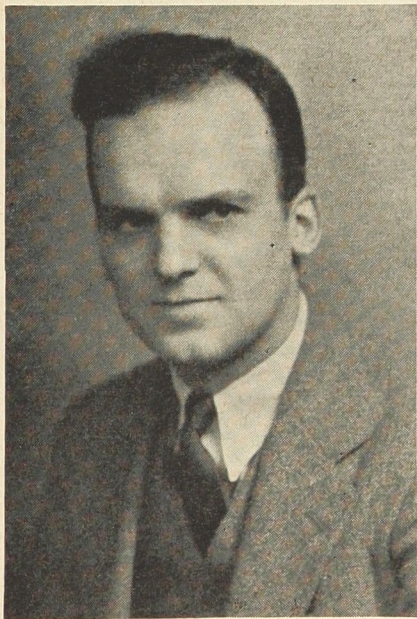


A, the university's highest rating. North Central Association of Secondary Schools and Colleges has always kept her on its accredited list since 1916. At present graduates have no difficulty in entering the best graduate, technical, and professional schools throughout the country. The college holds membership in the American Council on Education, in the Federation of Illinois Colleges, and in the Association of American Colleges.

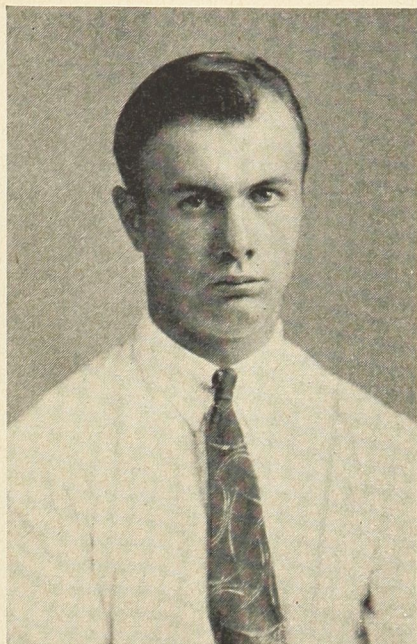
### History of Local Society

The local Alpha Kappa Pi Fraternity had its beginning on the twentieth day of March 1921, as a result of a meeting of six men at the home of Miss Carrie D. Merrill, Carthage, Illinois. These men, with a unanimity of purpose and ideals, felt the necessity of the formation of a new fraternity on the campus of Carthage College. The spirit of brotherhood has always been fostered and maintained throughout the history of the local chapter.

Being a progressive organization, our brothers desired the advantages of a more widened horizon. With this in view, in 1927,



CALVIN SIFFERD, *Chapter Counsellor*



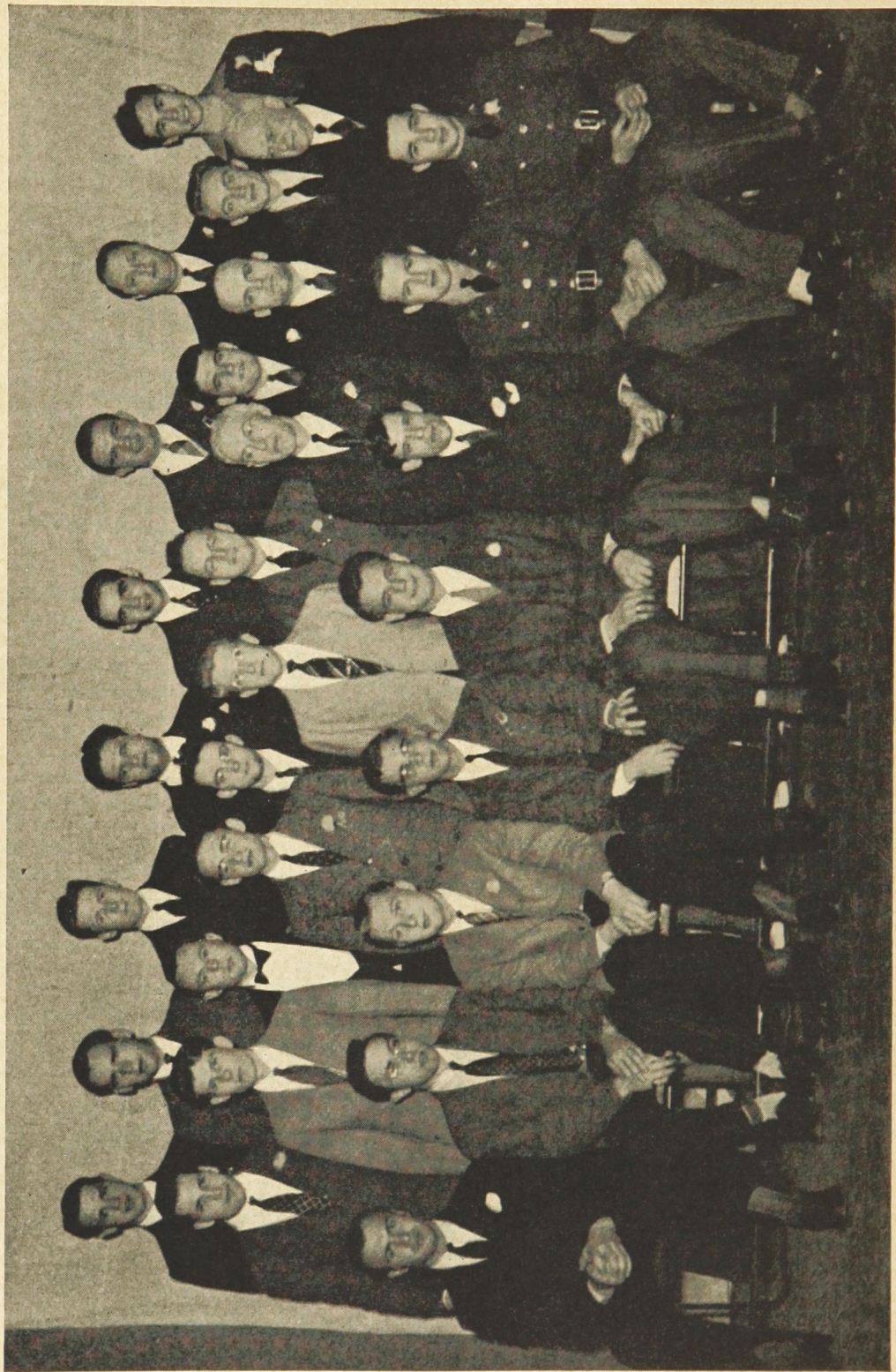
DONALD O. EISFELLER, *Alpha Nu '42*

*President of petitioning group, holder of college 440 yd. record, winner of graduate scholarship.*

they petitioned for membership into the national Alpha Kappa Pi brotherhood. This privilege was granted and our fraternity became the Zeta Chapter of Alpha Kappa Pi and duly initiated by a Mr. Allen of Ellsworth College, Iowa. Due to our college faculty and board of trustees' opposition, it was necessary to dissolve the charter.

The desire for national affiliation, however, did not die. In February of 1942, the Board of Trustees of Carthage College granted to each of its social organizations the opportunity to unite with the national society of its choice. We immediately consulted with Brother Wilson relative to the proper steps to be taken in renewing our charter privileges. On April 18, 1942, we were again initiated into Alpha Kappa Pi, this time as Alpha Mu Chapter. We had the distinguished pleasure of having with us Brother Albert H. Wilson, Brother Frank J. Krebs, Brother Shoemaker of the University of Toledo, and a delegation of brothers of Alpha Eta Chapter from Milton College,





ALPHA MU CHAPTER POSES WITH RITUAL TEAM AFTER INSTALLATION



Wisconsin, including Province Chief, Brother Van Horn.

With the addition of Alpha Kappa Pi to the Carthage College campus, we rest assured that the historic expression *Carthago non delenda est* shall ever be true. We shall always endeavor to be worthy of the honor bestowed upon us.

### The Installation

■ WITH the arrival of Brothers Wilson and Krebs on the campus of Carthage College, Alpha Mu had its beginnings. After being introduced to all of their potential brothers, they addressed the group with words of greetings. Immediately plans were made for the great day, April 18, 1942. At ten o'clock in the morning the initiations began, lasting throughout the afternoon until five o'clock. At noon the Alpha Eta delegation from Milton College, Wisconsin, arrived to take part in the ceremony. Five of their group together with Brother Shoemaker of Alpha Delta, and Brother Krebs, constituted the ritual team. Nineteen proud and happy brothers were added to the ranks of Alpha Kappa Pi. Of this number, one of the brothers was from Alpha Eta who had successfully completed his pledging season.

Needless to say, after an arduous day of initiating, the brothers were not reluctant to adjourn to the fellowship banquet. In the midst of a home-like setting, the brothers rejoiced with each other over the great events of the day. The meal was spiced with talks by our beloved Adviser, Brother Wilson; Brother Van Horn, province chief; Brother Lake, president of Alpha Eta; Brother Sifferd, on behalf of the alumni; and the indomitable Brother Krebs, who watches over the grand treasury. With a few concluding remarks by our president, the banquet was brought to a conclusion. The day was successfully closed by the first formal meeting of Alpha Mu Chapter.

### The Initiates

#### Undergraduates

William Theodore Shellhorn '42, Marinette, Wisconsin.

Donald Orrin Eisfeller '42, Chadwick, Illinois.  
Walter Elmer Wittman '43, Chicago, Illinois.  
Milus Walter Bonker '43, Manly, Iowa.  
Harold Quentin Longenecker '43, Hamilton, Illinois.

Clarence Charles Bachmann '43, Milwaukee, Wisconsin.

Benny James Steinberg '43, Madison, Illinois.  
Ardene Carley Kalkoske '44, Neenah, Wisconsin.

Waldo Earl Berger '44, Cedar Rapids, Iowa.

Malcolm Vincent Longenecker '44, Hamilton, Illinois.

Charles Louis Wendorff '45, Quincy, Illinois.

Arthur Donald Cox '45, Marinette, Wisconsin.

Richard Barton Sebert '45, Chicago, Illinois.

John Hardeman Fay '45, Carthage, Illinois.

#### Alumni

Raymond Leroy Bell '42, Bushnell, Illinois.

Gladstone Hume Cale '41, Hamilton, Illinois.

#### Faculty

James Wilson Poultney, Professor of Classics, Carthage, Illinois.

Lyle K. Atkins, Assistant Professor of Music and Director of Band and Orchestra, Carthage, Illinois.

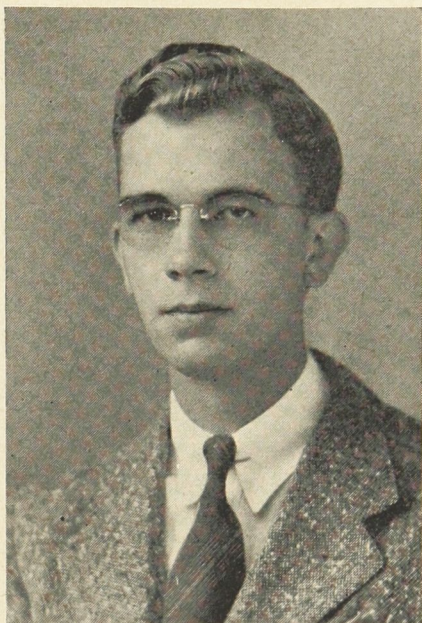
### Alpha Mu's First President

By Walter Wittman, Alpha Mu '43

■ OUR LOCAL CHAPTER was organized on March 21, 1921. Less than seven months later another event occurred, which, too, was destined to have a profound effect upon Alpha Kappa Pi at Carthage College. For on October 3, 1921, in a little town in northern Iowa—Manly to be exact—Milus Bonker first saw the light of day. He was nurtured on the corn that made Iowa famous, and today his friends agree that this corn is still in evidence. After struggling through grammar school and high school he was sent to Carthage College. It was here that the only significant event of his life took place—he became a pledge of the local Alpha Kappa Pi. He was tough enough to survive the informal initiations, so he was speedily accepted as a brother "Kap." This event proved to be as fortunate to the fraternity as it was to him. His abilities were soon recognized; he was elected to the secretarial post. He soon caught the zeal which filled the hearts of our first charter members—a desire to see our local Alpha Kappa Pi a



chapter of Alpha Kappa Pi. Being a lively correspondent, he and Brother Wilson got along famously. His untiring efforts soon proved to our Fraternity Adviser that a chapter at Carthage was on the road to becoming a reality. As stated elsewhere, the administrators of Carthage College frowned upon national social organizations. Brother Bonker



MILUS W. BONKER '43

*Carthage Chapter's First President*

set upon the task of proving to them that their fears were ungrounded. His success in this endeavor is apparent. Alpha Kappa Pi is now the only national fraternity on the campus of Carthage College. And it is no more than fitting that the first president of Alpha Mu chapter should be Brother Bonker.

Besides working for the benefit of his brothers, our president has found time to engage in numerous extra-curricular activities. He is no mean debater, and for three years has been confounding his forensic opponents. He is also quite a tennis player, having earned his "C" with his racket. During the summer he has been doing field secretary work for the college. At present he is temporarily occupying the office of Director of Public Relations.

Brother Bonker is studying for the ministry. He is majoring in Classics and will graduate with the A.B. degree in May of 1943. After graduation he will enter Northwestern Lutheran Theological Seminary at Minneapolis, Minnesota. His oratorical ability, pleasant personality, and sincerity make him well fitted to be a true minister of the Gospel.

We respect our president, and all who know him do the same. So—Brothers of Alpha Kappa Pi—we present the President of Alpha Mu, Brother Milus W. Bonker.

### Installation Sidelights

By THE OBSERVER

■ FRANK J. KREBS, incomparable Grand Treasurer of the fraternity who arrived early and stayed late, won the hearts and confidence of all the Alpha Kappa Pi men, new and old, at the Carthage installation. If the new chapter falls on financial difficulties it cannot be for reason the brothers were not drilled and started right by the financial wizard of the fraternity. Although it is said to be against all rules for a treasurer to be popular and desired, it was evident that no person was more sought after and acclaimed than our Buckeye "Watch Dog of the Treasury."

The visiting Alpha Kappa Pi men were deeply grateful for the way the Carthage brothers took pride in showing them the beautiful college campus and the attractive places in the historic Town of Carthage. Brothers Bachmann, Wittman, Stewart, Steinberg seemed to be the men named for this undertaking and right royally did they perform. It was not difficult to enthuse over so lovely a campus. The immense athletic fields and gymnasium, the old and historic buildings, along with the magnificent library almost completed, give an inspiring background.

Calvin Sifferd, now chapter counselor to Alpha Mu chapter, was on the job continually, and spoke at the banquet of his pride in being able to bring his Alpha Kappa Pi badge from the strong box, and flash it

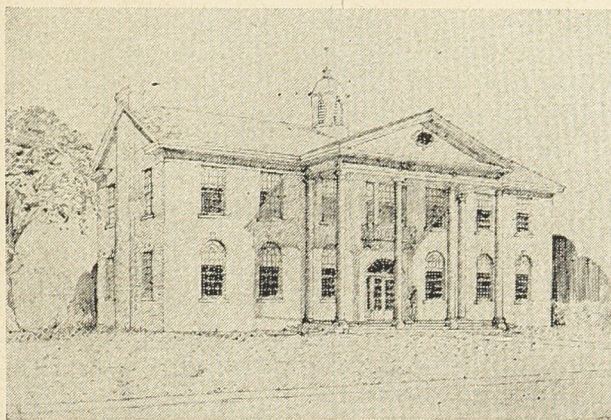


again after some fifteen years of submergence. An alumnus of the college and residing in his lovely home near the campus, Brother Sifferd will prove a tower of strength to the chapter for years to come. Brother Sifferd, it was plain to see, is one of the substantial business men of Carthage.

The new chapter suffers the loss of an

lege has engaged him to bring Carthage to the attention of desired students of that vicinage.

Donald Eisfeller, athlete and scholar, was the conservative and dignified retiring president of the petitioning group. No wonder the local society was at its very peak in achievement at the time of installation into



NEW LIBRARY AT CARTHAGE

outstanding senior in William Shellhorn. His list of honors speak for him. President of the "C" Club, member of the student council, member of the interfraternity council, and vice-president of the fraternity, he received the football award as the most outstanding player and contributing most to the success of the team. His influence will remain long after he has left the college and chapter.

Waldo Berger, sophomore and football artist from Cedar Rapids, Iowa, brings a little bit of family ties into the college connections. His uncle, the Honorable John L. Berger, Cedar Rapids, Iowa, is a member of the Carthage College Board of Trustees.

Milus W. Bonker, the inspirational spark plug during the past two years of petitioning, seemed to be able to be doing many things at the same time and also able to refute the truism that the same person cannot be in two or more places at the same time. He was everywhere, and always with a glad hand and happy smile. No wonder the col-

lege the Alpha Kappa Pi fraternity. Such leadership always brings results. Brother Eisfeller set a new college record in the 440 yard track event and was awarded a graduate scholarship at the University of Illinois which he turned down to enlist as a cadet in the Army Air Corps.

Carthage College is a stand out in musical lines and here we find Alpha Mu topping the picture with Professor Lyle K. Atkins, head of the Music College of Carthage, as well as the Director of Band and Orchestra, now wearing the Alpha Kappa Pi badge. The Professor felt so good over the matter that he "set up the smokes" just preceding the installation banquet. It was a pleasure also to have met his charming wife and lovely young daughter.

Unfortunately for Alpha Mu and Alpha Kappa Pi Professor Robert L. Warren, Assistant, Professor of Physics, was on leave of absence for military service and could not be present for his initiation. However, on his return the Ritual will be revealed to him.



Alpha Eta sent down a car load of enthusiastic Alpha Kappa Pis. There were six of them from Wisconsin and none more inspirational than Dean John N. Daland, Milton College. Others were Province Chief Milton Van Horn, of the Milton College faculty, and Brothers Baum, Lake, Roberts and Pledge Lipke.

Elmer Lipke, the pledge from Alpha Eta attending the installation, became so Alpha Kappa Pi minded that he was initiated. With Dean Daland on hand to verify his standing for membership, he returned to his home campus wearing the Seven Pointed Star of the fraternity. Pledge Lipke came as a visitor but returned as a full fledged fraternity brother.

It was evident that the two groups of Alpha Kappa Pis, Milton and Carthage, were congenial for in a short time it would have been impossible for a casual visitor to separate them into their rightful chapters. As one of the Milton representatives remarked: "It seems as though we have known each other for years and years."

Although the installation was taking place on Illinois terrain the fact was noted that of the Carthage men being initiated four were loyal Badgers from the State of Wisconsin: William Shellhorn, Clarence Bachmann, Ardene Kalkoske and Arthur Cox.

Dr. James Wilson Poultney, faculty member, was one of the most interested of all the Carthage men receiving the ritual. A graduate of Johns Hopkins and Professor of Classics at Carthage College, he still is one of the most active and busy men in all the affairs of the fraternity and college. Two instances were regrettable, one for Dr. Poultney, in that he lost his badge almost immediately after receiving it, and one for the

chapter in that he was called very shortly, after his initiation, to take up certain war labors for the government. No more popular man is found on campus or within the Town of Carthage than Brother Poultney.

Province Chief Van Horn really gave the heart of the rating of the men composing the new chapter when he remarked: "The constancy of these men (petitioners) through twelve years of the keenest desire for affiliation with the fraternity is alone, in my mind, a splendid endorsement." As one of the initiating team Brother Van Horn performed with dignity and fraternalism. Fortunate indeed is Alpha Eta to have his immediate guidance at all times.

It was pleasurable to observe the way the co-eds (Carthage College being blessed with a host of beautiful young ladies) were trying to seem not interested and still use every opportunity possible to gain a full inspection of the badge of the Alpha Kappa Pi coming to their campus life. No wonder the report is abroad that some of these interests have culminated in some of the Carthage brothers asking just how to secure a second badge in order that two instead of one might be wearers of the seven pointed star. Again we quote William Shakespeare and in full agreement: "There's nothing good unless a woman's in it."

It was most encouraging to hear the fine words of commendation spoken by President Schulz of the College regarding the Alpha Kappa Pi members. It is certain there will be no blocking of progress insofar as interest from the ruling source is concerned. Already Dr. Schulz has plans forming to give all the fraternities at Carthage a bigger opportunity to fully express their plans and ideals on that campus.



# The Fraternity Dollar

By Grand Treasurer Frank J. Krebs

See a pin and pick it up, All day you'll have good luck;  
See a pin and let it lay, Bad luck you'll have all day.

■ IN THIS ARTICLE there is a radical departure from all previous articles. This article will deal with specific instructions to the chapter treasurer. It will answer some of the questions that arise from time to time. Of course not all of the questions are answered nor does it eliminate the numerous correspondence with the national treasurer's office.

## INSTRUCTION SHEET TO CHAPTER TREASURER

### 1. *Initiation Fees and Pins*

The National initiation fee is \$18.00. This amount plus the quadruple application for membership must be in the Grand Treasurer's office *two weeks* prior to the day of initiation. Pins will be issued only if the cards are completely filled out. Please leave no blanks unfilled and check and recheck these cards. The initiation fee must be paid before the pin will be released.

### 2. *Pledge Pins*

Pledge pins may be ordered directly from L. G. Balfour Company, Attleboro, Massachusetts, or from Frank J. Krebs, Dellroy, Ohio. Price \$1.00 each plus U. S. Luxury tax, \$.10. Check, M.O., or cash must accompany the order.

### 3. *Fraternity Jewelry*

L. G. Balfour is the official Alpha Kappa Pi jeweler and is the only company that has permission to sell Alpha Kappa Pi jewelry.

All jewelry other than the official plain badge may be purchased from Balfour or their representative. No release from the National office is necessary. The U. S. Supreme Court has ruled that fraternity jewelry is not exempt from state or city sales or use tax.

### 4. *Replacing Official Badge*

A plain badge is the official Alpha Kappa Pi badge. This pin may be replaced only by permission of the Grand Treasurer. Such permission will be granted only when the request is accompanied by a notarized statement that the original pin has been lost.

### 5. *National Accounting System*

The Grand Treasurer will furnish to each chapter *free* a manual on Chapter Accounts and how to keep them. Requests should be sent to Frank J. Krebs.

### 6. *Reports*

Requests for information will be made from time to time. Please answer such requests promptly. All reports should be carefully filled out and checked before sent to the Grand Treasurer. *BE PROMPT AND ACCURATE.*

### 7. *National Dues*

National Dues are \$6.00 for each undergraduate initiated prior to the present academic year. All undergraduates who fail to pay this obligation should be dealt with according to the constitution.





# THE ADVISER'S CORNER

## Chapter Co-operation

■ IN THE MATTER of chapter building there are three marked ways in which the individual member may co-operate. One is to do less than your part of the job, which is really not co-operating at all and explains why the word dormant or inactive fills the space where the chapter's name would otherwise be appearing. The second is to be meticulous and do just exactly your share of what you find must be done to further the interests of the corporate chapter. In this attitude of co-operation the chapter will stand at status quo if not falling below the average level. Therefore mediocrity will be the result. The third is to do as much more than your share as you possibly can. Then, if all the other members decide upon the same course of action, what a stand out chapter would be found, and no matter on what campus that chapter may be established. What is the type of co-operation now holding the spot light in the chapters of Alpha Kappa Pi? As that question is answered so will the chapter be holding the torch in action.

## Chapter Counselors

■ FROM time to time the fraternity is asked by some chapter counselor: What is the work of the counselor? If a moment's reflection had been taken the above query would be wholly unnecessary. To take counsel means to confer, and to be a chapter counselor indicates that the Chapter Counselor has the right to acquaint himself with every fraternal and business detail of the chapter under his care. Then if he finds the program is progressive and healthy, to keep

the ship sailing under such conditions. If on the other hand he discovers poor management in social, financial or scholastic matters, it is his business to take immediate steps to remedy these conditions. If there is one criticism against the average counselor it is that too many of these appointees take their responsibilities too lightly, and in some instances fail either to inspire or correct the chapter, but waste the time of self and chapter in carping criticism. Alpha Kappa Pi is fortunate in possessing some remarkable Chapter Counselors, and from these men come no complaints but inspirational reports of progress. Others are doing splendid work and make no reports, which is not good policy. Then a few have permitted the chapter under their care to get into tight places, and then instead of correcting the errors, begin to ask "What can the chapter counselor do?" Over the years these chapters have been most fortunate in their Counselor: Alpha, Nu, Omicron, Rho, Psi, Alpha Alpha, Alpha Gamma, Alpha Delta, Alpha Eta, Alpha Iota and we are sure the most recent chapters at Rensselaer, Ohio Northern and Carthage will find their respective Counselors alert and capable. There is no work more important at this very moment in the life of the fraternity than that of the Chapter Counselor. Know your chapter, then meet the needs as they are brought to your attention.

## Province Chiefs

■ THE Province Chiefs in the Alpha Kappa Pi Fraternity should be more than active this coming collegiate year. War with its rightful demands has placed extra burdens



on the collegiate chapters and the Province Chief has his work cut out for him if there is to be the rightful contacting of the different collegiate units. Do not wait until the chapter falls into distress, but be ahead of the game and anticipate the needs and have them ready even before the need is actual. There is no better office in Alpha Kappa Pi where a live-awake Alpha Kappa Pi is able to contribute to the general advancement of the fraternity. He not only can keep his chapters in full going order, but he can make a study of the other colleges in his Province for possible future growth. One of the chief duties of the Province Chief is to see to it that his particular bailiwick is meeting the opportunity to make Alpha Kappa Pi stronger and better. The true Province Chief does not wait to give his advice and labors at the bi-ennial conventions, but he is continually on the watch-tower in service, so that when the bi-ennial conventions take place, he can give an appealing and constructive report of his Province Stewardship.

Right now every Province Chief should impress upon his chapters the following needs to be observed continually:

A day in and day out pledging program. Finding the man worthy the fraternity and winning him to the chapter. Keep the house filled insofar as possible. In pledging to coach the chapters to appreciate that Alpha Kappa Pi desires men, not mannikins.

Show the necessity to economize. Cut the budget to the bone and then meet it individually and as a chapter. Go as you pay rather than pay as you go.

Keep a systematic contact with the alumni and, if accounts are in arrears, show the chapter how to collect them.

Stress the foolishness of hell-week antics and inspire the chapter members to a constructive revamping of the house and chapter instead of wasting energy in non-essentials.

If the ALPHA were called upon to name one, and only one great and outstanding need in the fraternity, that need would be the need at this very moment of more Prov-

ince Chiefs who actually know their Province needs. No officer in the fraternity has the opportunity of coming closer to the heart of a chapter than the Province Chief of that particular chapter. Alpha Kappa Pi should give a bi-ennial prize to that Province Chief who more nearly meets his every obligation within that stated period of two years, than any other of his fellow officers.

### Extension Firsts

■ It is not of slight significance to appreciate the fact that Alpha Kappa Pi, coming into a national existence long after the fraternity system had taken root in the life of the American colleges and universities, is still able to point to the fact that she stands first among national orders at several prominent colleges, and all these colleges highly accredited as to degree conferring requirements. In order of Alpha Kappa Pi establishments our chapters were first to carry the national ideals to Newark College of Engineering, Newark, New Jersey; Wagner College, Staten Island, New York; Hartwick College, Oneonta, New York; Tri-State College, Angola, Indiana; University of Toledo, Toledo, Ohio; Wayne University, Detroit, Michigan; Milton College, Milton, Wisconsin; and Carthage College, Carthage, Illinois. At practically all these campuses, old and well established local societies became chapters in the Alpha Kappa Pi fraternity, and carried much strength into the chapter and national fraternity life through the initiation of their alumni members. Then, Alpha Kappa Pi was second in placing chapters at Marshall College, Huntington, West Virginia; West Virginia Wesleyan, Buckhannon, West Virginia; and at American University, Washington, D.C. She was preceded at the West Virginia campus by Kappa Alpha Southern, and at American by Phi Sigma Kappa. At Wake Forest Alpha Kappa Pi was third to enter and was preceded only by Kappa Alpha and Theta Kappa Nu, the last named now a member of the Lambda Chi Alpha through merger.

*(Continued on page 139)*





# ALPHA KAPPA PI HIGHLIGHTS

## On Staff of Church Paper

■ REGINALD W. DEITZ, *Alpha Alpha '35*, who was first president of the Hartwick chapter, was recently appointed to the staff of the Parish and Church School Board of the Lutheran Church. Their publication *The*



REV. REGINALD W. DEITZ, *Alpha Alpha '35*

*Lutheran* introduces Brother Deitz in a recent issue.

"Pastor Deitz comes from a family of clergymen both on his mother's and his father's side. His father, Raymond C. Deitz, D.D., has served pastorates in the New York Synod and is now pastor of Holy Trinity Church, Hollis, L.I., New York. Dr. Deitz is a member and former secretary of the Board of Trustees of Hartwick College.

Three uncles—the Rev. A. D. Deitz, professor of Systematic Theology at Hartwick Theological Seminary, the Rev. Olney E. Cook, and the Rev. John E. Hoick; a great uncle, the Rev. Luther P. Ludden, a former western secretary of the Board of Home Missions of the General Synod; a great-grandfather, the Rev. Alonzo P. Ludden; and a cousin, the Rev. Hugh Whitteker, president of the Nova Scotia Synod, are part of his family background. His mother was Miss Carrie Ella Whitteker, daughter of the Rev. Frank Whitteker.

"Pastor Reginald Deitz was born in Middleburg, New York. He attended high school at Johnstown, New York, graduating in 1931 as valedictorian of his class. He then entered Hartwick College, Oneonta, New York, from which he graduated *magna cum laude* in 1935. While at Hartwick he was a member of the college a cappella choir, president of the Andrew and Philip Society (the student religious organization), and assistant editor of the college year book. Pastor Deitz took his first two years of theological work at Hartwick Seminary and then went to Gettysburg Seminary, receiving his B.D. in 1938. For the next two years he was resident graduate fellow at Gettysburg Seminary, during which time he received his S.T.M. degree. He continued graduate work at Union Seminary, New York, in connection with his pastoral work.

"Pastor Deitz is one of the young but active pastors of the United Synod of New York. He was ordained by that synod at Rochester, New York, June 15, 1938. Even before his ordination he served as Protestant chaplain in the Boy Scout Camp for Manhattan 1936-37. In 1938 he was assistant



pastor of Luther Place Memorial Church, Washington, D.C., Dr. Carl C. Rasmussen pastor. He resigned this position to accept the fellowship at Gettysburg Seminary. In 1940 he became pastor of Christ Church, Airmont, Suffern, New York, and served that pastorate until coming here."

### Camp Work

■ FOLLOWING a custom of the past few years three boys were again sent to the seashore for a stretch of three weeks. The Camp is operated at "Cedar Beach," Port Monmouth, New Jersey, and in charge of Adviser A. H. Wilson. The boys going under the generosity of the fraternity were brothers—Robert, Richard and Anthony Diaz. During the "Days Off," Adviser Wilson was assisted by Brothers Richard R. Schwartz and Harold Tyrell, both from Theta chapter, Columbus University. It is a fine work, and all interested are grateful.

### Kind Words

■ IN MENTIONING the entrance of Alpha Kappa Pi into the life of Carthage College, the Editor of *The Cross and Crescent* (Lambda Chi Alpha) had these kind words to say: "A new field has been opened to the general fraternities with the entrance of the thriving and well-organized Alpha Kappa Pi into Carthage College, Carthage, Illinois. The local chartered was of the same name, Alpha Kappa Pi, and receives the 35th charter issued by the fraternity."

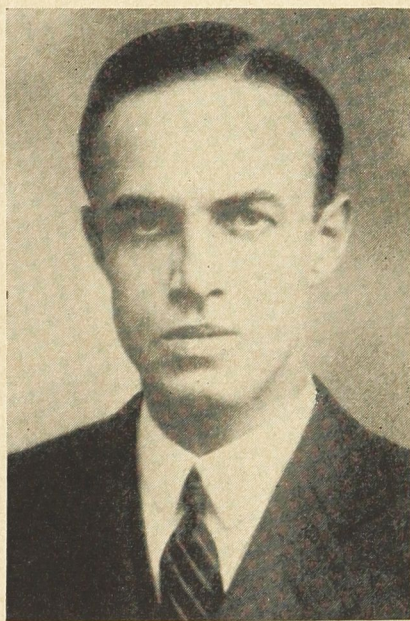
### Scholarship Cup

■ THE ALPHA is pleased to announce to the general fraternity that Alpha Alpha chapter, Hartwick College, Oneonta, New York, has won the cup for scholarship given on that campus. Thus Alpha Alpha chapter has topped its long list of triumphs along other lines, for the college year 1941-42, by going to the front in academic scholarship. Alpha Kappa Pi is always happy to note such

successes among the several chapters. However, with our Hartwick chapter, high scholarship is traditional.

### At Stevens

■ DR. PAUL ALLEN, JR., charter member of Phi chapter, St. John's College, Annapolis, Maryland, and for some time head of the chemistry department at St. John's, and for the past two years at Lynchburg College, Virginia, has been called to Stevens Institute of Technology, Hoboken, New Jersey, where he will continue to teach along his chosen line of chemistry. Before going to St. John's



DR. PAUL ALLEN, JR., *Phi*  
*Takes up duties at Stevens*

College, Dr. Allen attended Harvard and there received his degree. While residing in Maryland, Brother Allen served as Chief of Eta Province. After September 1, 1942, the Allen family will be located in New Jersey. Gamma chapter at Stevens will be benefited in having this enthusiastic Alpha Kappa Pi on their campus.



# COMMENTS OF FELLOW



# ACTIVITIES OUR GREEKS

## Greek Notes

■ LAMBDA CHI ALPHA has placed chapters at William Jewell College, Missouri, and Franklin College Indiana. At the first named college  $\Lambda X A$  meets  $\Sigma N$ ,  $K A$  and  $\Phi \Gamma \Delta$ , with  $K \Sigma$  recently withdrawn. At Franklin are chapters of  $\Phi \Delta \Theta$ ,  $\Sigma A E$  and  $K \Delta P$ , with an inactive  $\Delta T \Delta$  chapter of long time withdrawal. At Franklin  $\Lambda X A$  is a revival of a dormant  $\Theta K N$  chapter.

Sigma Tau Delta is a local at Mississippi State College, and is a former chapter in B K that did not merge with other chapters going along with the  $\Theta X$  fraternity. All negotiations were agreeable to all parties interested.

Pledging at the University of Florida seems to be an unplanned one among the fraternities. The past college year shows that some fraternities pledged as high as fifty or more freshmen, while other excellent fraternities were able to add, from the same class, not more than five or six men. The question might be asked as to the final outcome of such wide margin in pledge results?

Lambda Chi Alpha is the only fraternity, local or national, at Culver-Stockton College, Missouri. The past year thirty returning  $\Lambda X A$  men pledged a total of thirty-nine new members. Such success is often tinged with small satisfaction since there is no testing of mettle. A good sturdy rival would be beneficial to both  $\Lambda X A$  and the college.

Wofford College, South Carolina, is completing another half-million dollar endowment. Benefiting fraternities are:  $K A$ ,  $\Sigma A E$ ,  $K \Sigma$ ,  $A \Lambda T$ ,  $\Lambda X A$ ,  $A K \Pi$ ,  $\Delta \Sigma \Phi$ , and  $\Pi K \Phi$ .

Alpha Xi Delta has placed a chapter at

Penn State College, and becomes the thirtieth panhellenic sorority to enter this college.  $A \Xi \Delta$  carries chapters at Allegheny College, University of Pennsylvania and Penn State with a dormant chapter at the University of Pittsburgh. This gives the picture of the  $A \Xi \Delta$  life within the Keystone State.

Kappa Sigma has made its first entrance into the State of Connecticut by chartering a group of petitioners at the University of Connecticut. Nationals here are:  $\Phi M \Delta$  and  $A \Gamma P$ , with several locals with years of organization.

Alpha Chi Rho held its 1942 national convention at Middletown, Connecticut, with the Wesleyan University chapter house as headquarters. A feature of the convention was the pilgrimage to Trinity College, Hartford, Connecticut, some fifteen miles distant to visit the mother college of the fraternity.

Delta Psi, in taking over its beautiful new chapter house at Trinity College, possesses one of the most adequate and beautiful homes within the New England States. Other Trinity fraternities:  $\Delta K E$ ,  $A \Delta \Phi$ ,  $\Psi Y$ ,  $\Sigma N$ ,  $\Delta \Phi$  and  $A X P$ . Also one local,  $A T K$ .

Chicago University is rapidly becoming the graveyard for the Greek letter fraternities. Since the year 1932 no less than fifteen fraternities have withdrawn their charters, the most recent being the  $X \Psi$ . There are still some fifteen fraternities on that campus.

Washburn College, Topeka, Kansas, when threatened with a financial shortage, has been taken over by the City of Topeka as a Municipal University. Fraternities:  $\Phi \Delta \Theta$  and  $K \Sigma$ . Sororities:  $K A \Theta$ ,  $A \Phi$ ,  $\Delta \Gamma$ , and  $Z T A$ .



▪ SINCE the high tide of mergers and dissolutions among the general college fraternities seems to have been reached, and now that the merged fraternities have entered into their usual activities, and the dissolved fraternities are gradually being forgotten, it might be well to see just how the younger fraternities, those founded since the turn of the year 1900, are faring, and how many such units have been added permanently to the Greek Letter family. There are now in active service thirty-seven fraternities which were organized prior to 1900.  $\Delta \Sigma \Phi$ , founded at the City College of New York, was the last of the before-1900 fraternities, dating from December 19, 1899.  $\Sigma \Pi$  was founded at Vincennes University, Indiana, in 1897, but did not place a second chapter until 1905. Since that date the mother chapter has become dormant when the college lost its degree conferring power. Of the fraternities that have arrived on the scene since the year 1900, and after the dissolutions and mergers, we find there are twenty-one now actively functioning.

To some it might appear that the growth in numbers has been too great. However when you analyze these twenty-one fraternities as to requirements in membership, and consider the tremendous growth in college and university attendance, it might well be to change the conclusion from too many fraternities to the matter of too few. For instance we find that of this number, nine are fraternities for Hebrew students only, and of these nine, six of them were founded at the colleges and universities in New York City. All of them, except the one founded at George Washington University, were

founded within the State of New York. In a certain sense they are not competitive other than among themselves; hence there is no crowding here. Furthermore of the twelve remaining fraternities one is for Catholic students only while still another one is for students of Italian parentage. Thus we find that the general fraternities, within this post-1900 grouping, and stressing no particular qualifications for membership, number exactly ten. This growth is far below the fraternity increase that brought into existence the thirty-seven pre-1900 orders.

Of these ten fraternities  $\Lambda \chi \Lambda$  and  $\Sigma \Phi \epsilon$  have made the greatest advance in number of chapters and memberships, not only through the placing of chapters, but through two of the most noted mergers which have taken place among fraternities.

### The Adviser's Corner

*(Continued from page 135)*

At Ohio Northern Alpha Kappa Pi was the fourth of the N.I.C. fraternities but in reality first since the Theta Nu Epsilon from which Alpha Kappa Pi was formed was the first fraternity to place a chapter at Ohio Northern. It is also well to point out that all these chapters are prosperous and stand among the best and most contributive to the annals of the fraternity. There are still frontiers, even in the field of national fraternities, if there is the awareness to find them. Alpha Kappa Pi is proud of its first, second and third establishments, as well as of the other chapters now giving a devoted service to the precepts of the fraternity.

ALBERT HUGHES WILSON



# Brothers in the Service

(Rank and branch of service are given where known but the Editors have deemed it wise to omit their stations.)



## OUR GOLDEN STARS



ENSIGN LEE FOX, JR.  
*Alpha Gamma '42*

Killed in action at Pearl  
Harbor December 7, 1941

CADET KENNETH W. MCCORMICK  
*Alpha Gamma '41*

Killed in training plane crash  
at Pensacola, Florida on  
May 12, 1942



ENSIGN KENNETH W. MCCORMICK  
*Alpha Gamma '41*

*Killed in training plane crash at  
Pensacola, Florida*

### *Alpha*

JOHN R. BERMINGHAM, JR. '40 Ensign, Navy  
Air Arm

DONALD E. BOLTON '40, Ensign, Navy

THEODORE FEUERBACK '38, Cadet, Naval Air  
Corps

JOHN J. FLAHERTY '43

DAVID MALLON '40, Ensign, Navy

HENRY E. PRUNER '41, Ensign, Navy

WALTER E. SKINNER '44, Army Engineers

PETER J. SKURLA '41, Ensign, Navy

### *Beta*

JOHN D. BARBES '39, Navy

FRANK BETANCOURT '40, Pvt., Army

WERNER E. JOHNSON '41

EDWARD J. JONES '38, 2nd Lt., Army

LAWRENCE B. KNUDSEN '40

EARLE J. KIRBY '39

GEORGE R. MAYER '38

RAYMOND W. MILLER '40

J. CLARK MULLEN '39

JAMES ROBB '35, Lt., Naval Air Corps

PAUL ROGLER '36, Pvt., Army

ANTHONY W. SCALA '40

ROBERT J. SCHWARTZ '43, Seaman 2nd Class

ROBERT P. VOMACKA '41, Pvt., Medical Corps

ROBERT C. WHITE '40, Navy

### *Gamma*

JOHN ENGLISH '40, Ensign, Naval Reserves

DONALD GROOME '38, Pvt., Army

MAURICE NOYER '40, Ensign, Naval Air Corps

HENRY OSTRUM '41, Ensign, Naval Reserve

### *Delta*

WILLIAM F. EGLIT '30, Lt. Jr. Grade, Navy

CLIFFORD T. GRAHAM '32, Lt., Naval Reserve

HENRY WEINKAUFF '31, Captain, Army Engi-  
neers



*Eta*

W. D. ARNOLD '40, Lt., Infantry  
DANIEL BIRD '41, Lt., Army  
JAMES L. CULP '39, Lt., Army  
ALLEN FESSENDEN '41, Lt., Army  
GEORGE MABRY '40, Lt., Armored Division  
J. S. MCGREGOR '40, Lt., Army  
PHILIP W. ROGERS '43, Pvt., Army

*Theta*

ARTHUR W. HOOPER '42, Coast Guard  
JOSEPH A. LAWLER '38, Pvt., Army Quartermaster

*Iota*

GEORGE J. CUCKRO '39, Marines  
ROBERT J. HAVILL '39, Pvt., Army  
DAVID WILSON, Army Air Corps Cadet

*Kappa*

THOMAS W. BLAIR '35, Army Signal Corps  
WYMAN P. BOYNTON, Lt., Army  
EDWARD F. MCLAUGHLIN, Lt., Army  
RICHARD L. MORGAN, Captain, Army  
HAROLD R. SPAANS, Captain, Army  
JOHN E. STRONG, Captain, Army

*Lambda*

PAUL W. DEAFENBAUGH '40, Army  
BERT DECKER '40, Pvt., Air Warning Service, Army  
THOMAS GRIM '41, Army Air Corps

*Mu*

DORSEY V. BIAS '42, Army Air Corps  
ROY B. NESTOR '43, Army  
GLENN A. SIKES '35, Captain, Army

*Nu*

RALPH W. BROWN '35, Lt., Armored Division  
PHILIP W. DAVIS '39, Lt., Army  
WARREN T. DYRE '38, Ensign, Navy  
JACOB S. HARTZELL '40, Army Air Corps Cadet  
ROBERT D. MARSDEN '40, Lt., Army Signal Corps  
FRANK S. NELSON '38, Lt., Army  
RICHARD M. SHEPHERD '41, Lt., Army Ordnance  
MYRON P. SMITH '38, Lt., Army  
HERBERT J. TILLAPPAUGH '37, Lt., Army  
PETER W. WEISS '39, Lt., Army Air Corps

*Xi*

JOHN E. BARRY '40, Ensign, Navy  
CARL B. FISHER '42, Lt., Army  
ADOLPH J. HONEYCUTT '38, Marines  
ROBERT V. LAMB '40, Ensign, Navy  
J. H. LINDSTROM '33, Lt., Army Air Corps

*Omicron*

JOHN A. DORNSIFE '41, Corporal, Army Signal Corps

JOHN A. GALLUP '42, 2nd Lt., Army Air Corps  
GEORGE O. HALBIG '40, Navy  
ARTHUR C. HARRISS '35, Captain, Army  
FREDERICK MARTIN, JR. '40, Army

*Rho*

EDWARD F. BAUMER '34, Lt., Army  
E. BOYD BEYER '40, Army  
WILLIAM BOES '39, 1st Lt., Army  
WILLIAM O. COLLINS, JR. '36, Seaman 2nd Class  
JAMES B. CORTWRIGHT '40, 2nd Lt., Army Ordnance  
GIRVIN CUTHBERT '39, Pvt., Army  
WILBUR S. DARBY '40, Army Air Corps  
JAMES E. DEAN '39, 2nd Lt., Infantry  
ARNOLD DEANGELIS '42, Pvt., Army Engineers  
C. RIGHTER DIXON '38, Sgt. Pilot, Royal Canadian Air Force  
JOHN M. FASOLI '31, 1st Lt., Judge Advocate Division, Army  
JOHN FISH '43, Pvt., Army Air Corps  
CHESTER GULICK '34, Lt., Infantry  
G. EDWARD HOLLOWAY '29, Major, Army  
ROBERT JOBBINS '39, Field Artillery  
FREDERICK L. KADEY '41, Field Artillery  
HARRY J. KARAKAS '32, Chemical Warfare Service  
GEORGE A. KRAMER '34, Ensign, Navy  
FRANK KUSZEN '41, Pvt., Army  
KENNETH W. MACWHINNEY, JR. '38, Ensign, Naval Air Corps  
KENNETH MOSS '40, Pvt., Army  
FREDERICK PROSSER '40, 2nd Lt., Army  
JOSEPH RUGGIERI '30, Captain, Army  
PHILIP M. STOWELL '39, 1st Lt., Army  
ZOLTON TACKACS '40, 2nd Lt., Army  
WILLIAM A. TEICHMAN '35, 1st Lt., Infantry  
GEORGE L. VAN DILLEN '40, Pvt., Army  
GEZA WOLF '40, Pvt., Army

*Tau*

ROBINSON ABBOTT '18, Lt., Naval Reserve  
PRESTON DILLON '41, Naval Reserve  
JOSEPH DONOVAN '42, Army  
LEWIS LORING '41, Naval Reserve  
JOHN SCOPA '42, Army Air Corps  
ARTHUR SUNDERMAN '41, Naval Reserve

*Chi*

ROBERT BURUS, Pvt., Army  
JAMES E. CROSS '42, Pvt., Army  
LYNN D. DURHAM '38, 1st Lt., Army Air Corps  
MARSHALL DURHAM '41, Army Air Corps Cadet  
JOHN FOREHAND, Army Air Corps Cadet  
VICTOR HARRELL, Naval Air Corps Cadet  
JACK LEE '43, 2nd Lt., Army  
JACK MCCLELLAND, Marines  
DONALD STALLINGS, Naval Reserve  
JOHN TYLER '39, 2nd Lt., Army Air Corps



*Psi*

HOWARD M. ARNETT '39  
 LEE B. COLEMAN '39, Top Sergeant, Army  
 DONALD R. CRANE '38  
 MASON DARNELL, Pvt., Army  
 RICHARD DIAS '41, Cadet, Army Air Corps  
 RALPH S. DOBBINS '41, Naval Air Corps  
 SAMUEL GWOSDEN, Pvt., Army  
 WILLIAM B. HICKS, JR. '39, Pvt. 1st Class, Army Ordnance  
 NATHANIEL JACK '43, Army  
 FRED LINGER, JR. '40, Army  
 STROMEDE C. MULLEN '39, Pvt., Army  
 GOHEN A. PIFER '42, Sergeant, Army  
 LEONARD R. REPERT '39, Pvt., Army  
 DONALD STEEL, Air Corps  
 KENNETH C. STEUER '40, Pvt., Army  
 DELMAR WALKER, JR. '40, Naval Air Corps

*Alpha Alpha*

RAYMOND BEECHER, Army  
 STANLEY BOGGS '41, Corporal, Medical Corps  
 RICHARD E. DAVIS '42, Army Quartermaster  
 JOHN F. GIFFORD '40  
 RAYMOND E. JOHNSON '40  
 ROBERT A. REYNOLDS '40, Corporal, Coast Artillery  
 MILTON R. WALSH '43, Pvt., Army

*Alpha Beta*

HAROLD G. BARBER '43, 2nd Lt., Signal Corps  
 CHARLES H. BUCKLEY '40, Cadet, Naval Air Corps  
 JOHN L. BURT '41, Army  
 VICTOR A. G. CANFIELD '40, Navy  
 CARL R. CUNNINGHAM '43, Technician, Royal Canadian Air Force  
 BENJAMIN H. DAWSON '41, Cadet, Naval Air Corps  
 ROBERT DAY '41, Army  
 JAMES DOWNIE '41, 2nd Lt., Army Air Corps  
 LAWRENCE ELY, Army Air Corps  
 WILLIAM R. GAMBER '41, Cadet, Army Air Corps  
 GENE B. GROVE '41, Army  
 WARREN K. METZGER '41, Cadet, Army Air Corps  
 GEORGE C. SMITH '41, 2nd Lt., Royal Canadian Air Force  
 ALBERT THOMAS '41, Pvt., Army

*Alpha Gamma*

ROBERT P. HAUN '41, Naval Reserve  
 ROBERT H. HIGGINS '40, Lt., Army  
 JOSEPH P. MURPHY '43, Pvt., Army

JOHN L. RYAN '40, 2nd Lt., Army Air Corps  
 CURTIS W. THOMAS '37, 2nd Lt., Army Air Corps

*Alpha Delta*

JOHN H. BLODGETT '40, Pvt., Army  
 HAROLD F. BOEHLER '41, Cadet, Army Air Corps  
 HARRY CHILDERS '43, Cadet, Army Air Corps  
 HERBERT A. ENGLER '39, Pvt., Army  
 CARLETON FYLER '42, Navy  
 BASIL LITTIN '39, 2nd Lt., Marines  
 ROBERT LITTIN '40, 2nd Lt., Marines  
 PAUL J. MELUCAS '43, Cadet, Army Air Corps

*Alpha Epsilon*

JAMES L. ADAM '43, Cadet, Army Air Corps  
 MARVIN V. AYERS, Army  
 JOSEPH L. BAFFA '41, Ensign, Ordnance, Naval Reserve  
 NORMAN J. DURST '36, 2nd Lt., Army  
 ROBERT T. HENNING '42, 2nd Lt., Army Air Corps  
 WILLIAM H. KEMP, Army  
 HOWARD E. REDDING, Army Air Corps Cadet  
 GEORGE G. SHRIVE '39, 2nd Lt., Army  
 RALPH C. SWARTZ '42, Ensign, Naval Reserve  
 FRED R. ULRICK '40, Corporal, Army

*Alpha Zeta*

MERVIN S. ALLSHOUSE, JR. '41, Ensign, Navy  
 WILLIAM C. BERSTEDT '41, Midshipman, Naval Academy  
 JOSEPH CHANCE '42, Army Air Corps Cadet  
 JOHN C. ECKHOLD '41, Navy  
 C. WAYNE ENGLANDER '40, Ensign, Naval Air Corps  
 WILLIAM H. GARLAND '43, Army Air Corps Cadet  
 ROBERT G. LARSEN '43, Marines  
 L. RODGERS LIDDLE '41, Pvt., Army  
 FRANK E. MEGENITY '42, Pvt., Army  
 ROBERT P. WEBSTER '35, 1st Lt., Army Air Corps

*Alpha Eta*

LOREN W. ABBOTT '40

*Alpha Kappa*

MAURICE P. ALGER, 2nd Lt., Army  
 COLIN ARNOLD, JR. '40, Pvt., Army  
 KARL G. SHARKE '42, Ensign, Naval Reserve

*Alpha Lambda*

NELSON LAULESS, Army Air Corps Cadet





# CHAPTER NEWS



HOUSE PARTY TIME AT RHO CHAPTER

## ***Alpha—N.C.E.***

*Initiated:* Donald William Auld '45, Irvington, N.J.; Grover Carl Rudolph '44, Newark, N.J.; Philip Coe Kennedy '45, Arlington, N.J.; Robert Louis Layburn '44, Iselin, N.J.; John Petro '45, Belleville, N.J.; Joseph Louis Schwalje '45, Metuchen, N.J.; Jack MacKay Young '45, Nutley, N.J.

## ***Delta—Brooklyn Polytechnic***

*Initiated:* Frederick Marius Jacobsen '45, Brooklyn, N.Y.; Harry Walter Muni '45, New York City.

## ***Eta—Presbyterian***

*Initiated:* William Davis Burley '42, Clemson, S.C.; Jack Stevenson Tyler '44, Florence, S.C.

## ***Mu—Marshall***

*Initiated:* George Johnson Selvey, Jr. '44, Huntington, W.Va.; Lawrence Wade Thompson '44, Chattaroy, W.Va.; Charles William Leibee '44, Huntington, W.Va.; Joseph Garland Bryant '44, Huntington, W.Va.

## ***Xi—North Carolina***

*Initiated:* Frank Robertson Holliday, Jr. '43, Greensboro, N.C.; Gerald Eugene Jones '44, New-



bern, N.C.; Robert Lawrence Thomanson '44, Newbern, N.C.; Joseph Clement Powell '44, Winston-Salem, N.C.; Willie Lemuel May '43, Rockingham, N.C.; Carey Hamilton Holloway '43, Raleigh, N.C.; George Elmer Anderson '43, Huntington, W.Va.

### **Rho—Rutgers**

*Initiated:* David Alexander Decker, Alumnus, Chicago, Ill.

### **Tau—Tufts**

*Initiated:* Rowland Austin Beers '45, Arlington, Mass.; Francis Lawrence Giknis '45, Turner Falls, Mass.

### **Chi—Wake Forest**

*Initiated:* Walter Frederick Woodward '44, Salisbury, N.C.; Walter Bennett '45, Washington, N.C.; Francis Irwin Hargrove '45, Clinton, N.C.

### **Psi—West Virginia Wesleyan**

*Initiated:* William Stewart Mowery '45, Irwin, Pa.

### **Alpha Alpha—Hartwick**

*Initiated:* Willis Forsythe '44, Syracuse, N.Y.; John Chase '45, Milford, N.Y.; Eugene Drew '45, Rennselaer, N.Y.; Lynn Green '45, Rome, N.Y.; Smith Lain '45, Wellsburg, N.Y.; William Moody '45, Canada Lake, N.Y.; Robert Nelson '45, Gloversville, N.Y.; John Roberts '45, Buffalo, N.Y.; Landin Van Buren '45, Oneonta, N.Y.

### **Alpha Beta—Tri State**

*Initiated:* Eugene Barnhart '43, Freeport, Ill.; John William Bell '44, Fredonia, N.Y.; Charles Virgin Bennett '43, Alexandria, Ind.; Anthony Frank Conti '44, Fredonia, N.Y.; Steve Gibbons Draper '43, Milford, Del.; Gordon Edward Etter '43, Lima, Ohio; William Michael Gallahue '43, Lawrence, Mass.; George William Harrison '43, Cumberland, Md.; Stanley Martin Levers '44, Wooster, Ohio; William Parish Stillman '44, Pratt, Kan.; William Arthur Thomas '44, Cuyahoga Falls, Ohio; William Curtis Tice '44, Spencer Port, N.Y.; Dolphus Burgette Wilkins '44, Milford, Del.

### **Alpha Delta—Toledo**

*Initiated:* Edward Harry Draheim, Jr. '45, Toledo, Ohio; Valden Fredrich Farnham '45, Toledo, Ohio; Kenneth Edward Keating '45, Toledo, Ohio; Paul Franklin Libbe '45, Toledo, Ohio;

William Carl Libbe '45, Toledo, Ohio; Arthur Le Marr MacRitchie '45, Toledo, Ohio; Walter Richard West '45, Toledo, Ohio; John Louis Mills '45, Toledo, Ohio; Kenneth Hugh Rice '45, Toledo, Ohio.

### **Alpha Zeta—Wayne**

*Initiated:* Jems Fredrick Bell '43, Detroit, Mich.; James Arnot Heller '45, Detroit, Mich.; Wallace Leigh Keating '43, Detroit, Mich.; John Stilwell Ladendorf '42, Detroit, Mich.; Donald Lee Meyers '44, Detroit, Mich.; Keith Moffatt '42, Detroit, Mich.; Loyes Otway Reynolds '45, Detroit, Mich.; Robert Marshall Steen '44, Detroit, Mich.; Glenn Theodore Purdy '45, Detroit, Mich.

### **Alpha Eta—Milton**

*Initiated:* Elmer Lipke '45, Janesville, Wis.

### **Alpha Theta—Wofford**

It is good to be able to report that everything is going nicely at Alpha Theta, and Wofford College. The chapter has lost fine men to the country's armed service, but being a college with a Military Department, the younger men are kept here to receive further instruction in the arts and sciences of such things.

At the close of the college year we elected officers and are set for the coming months immediately ahead of us: President, Bill Koopmann, Jr.; Bill Brown, vice-president; Dan Ferguson, secretary; Lansford McFadden, historian; Wilmot Mitchell, treasurer; Monroe Hiers, chaplain; Robert Sonneborn, sentinel; James Tribble, marshal. With this corps of officers, backed whole-heartedly, by the entire chapter, Alpha Theta is out to make Alpha Kappa Pi, on this ancient campus, stronger and still stronger, as the years come and go.

L. F. MCFADDEN

### **Alpha Iota—American**

*Initiated:* John Preston Wood, 44, Washington, D.C.

### **Alpha Kappa—Rennselaer**

*Initiated:* Robert James Butler '43, Waterbury, Conn.; Norman William Roberts '44, Watervliet, N.Y.

### **Alpha Lambda—Ohio Northern**

*Initiated:* Harry B. Raison, Alumnus, Lima, Ohio; Fred Wesley Florida, Alumnus, Ada, Ohio; Dic Leighton Dorney '44, Arlington, Ohio.



## ALUMNI CHAPTERS

### Oneonta Alumni

Eleven Alpha Kappa Pi alumni, all members of the Alpha Alpha chapter, Hartwick College, met at the 69 Spruce Street chapter house, May 9, 1942, and discovered that the largest attendance was recorded since the founding of this Oneonta chapter of alumni.

In the absence of Chairman Beecher, Vice Chairman Frisbee opened the meeting. The first feature was the reading of a splendid letter from Chairman Beecher urging the alumni to keep active and alert during these trying war days. Then followed the reading of cards and letters from more than twenty-five of our Alpha Alpha alumni expressing regrets in being compelled to remain away from this gathering of fellow Alpha Kappa Pi men. These greetings came from places

of business, home towns, and war camps.

It was decided by the association to maintain a Service Chart to be hung in the Alpha Alpha chapter house, and to inscribe thereon all the Alpha Alpha chapter men entering the military service.

Officers for the coming year were named as follows: President, Phil Frisbee; vice-president, John Sheldon; secretary-treasurer, Walter Whitney; Bulletin Editor, Wilson Worman.

This alumni group of Alpha Kappa Pi brothers are not only interested in the affairs of our Alpha Alpha chapter, Hartwick College, but in the affairs of the national endeavors, and, therefore, stand ready to do anything within our power to promote its welfare throughout the full length of our fraternity.

WILSON WORMAN

Box No. 114, Guilderland Center, N.Y.



FRATERNITY BUILDING AT WAKE FOREST which Army has taken over forcing the five fraternities housed there to find new quarters. Chi chapter is presently negotiating for house which it occupied before moving into the Fraternity Building.



# The Alpha Kappa Pi Fraternity

Founded March 23, 1921, at the Newark College of Engineering, Newark, New Jersey  
Incorporated under the laws of the State of New Jersey

## Grand Officers

ARBA S. TAYLOR, *Tau '26*.....*Grand President*  
637 Salem Ave., Elizabeth, N.J.  
DAVID S. BLANKENSHIP, *Eta '28* .....  
.....*Grand First Vice-President*  
2355 Dellwood Drive, Atlanta, Ga.  
PARKE B. FRAM, *Delta* .....  
.....*Grand Second Vice-President*  
38 Livingston St., Brooklyn, N.Y.  
W. SAMUEL KITCHEN, *Mu '31*....*Grand Secretary*  
321 26th St., Huntington, W.Va.

FRANK J. KREBS, *Iota '29*.....*Grand Treasurer*  
Dellroy, Ohio  
ALBERT G. JAHN, *Omicron '23*...*Grand Historian*  
3620 N. 15th St., Philadelphia, Pa.  
GEORGE E. OWEN, *Lambda '31*...*Grand Chaplain*  
514 Atlantic Life Bldg., Richmond, Va.  
ALBERT H. WILSON.....*Fraternity Adviser*  
163 East 111th St., New York City

## Board of Trustees

FRANK G. HELYAR, *Rho* .....  
.....4 Rutgers St., Stelton, N.J.  
KENNETH A. MACFADYEN, *Alpha '30* .....  
.....Lake Drive West, Packanack Lake, N.J.  
PAUL E. SCHWEIZER, *Alpha* .....  
.....14 Stewart Ave., Arlington, N.J.

LEON R. FENCIL, *Omicron '28* .....  
.....5942 N. Reach St., Philadelphia, Pa.  
N. ELLSWORTH WHEATON, JR., *Rho '33*.....  
.....25 Myrtle St., Bloomfield, N.J.

## The Active Chapters

### ALPHA PROVINCE

CHIEF: Wesley E. Rogler, *Beta '32*  
18 48th St., Weehawken, N.J.

ALPHA.....NEWARK COLLEGE OF ENGINEERING  
*Address:* 38 James St., Newark, N.J.  
*President:* Thomas Johnson  
*Secretary:* Walter Horner  
*Historian:* James Ellor  
*Chapter Counselor:* Royal E. Cleveland, 24 Murray St., Glen Ridge, N.J.

BETA.....WAGNER COLLEGE  
*Address:* c/o Alpha Kappa Pi Lodge, Wagner College, Staten Island, N.Y.  
*President:* Leonard Klemann  
*Secretary:* Paul Sukovich  
*Historian:* Carl E. Heilsberg  
*Chapter Counselor:* Wesley Rogler, 18 48th St., Weehawken, N.J.

GAMMA....STEVENS INSTITUTE OF TECHNOLOGY  
*Address:* 636 Hudson St., Hoboken, N.J.  
*President:* C. William Stengel, Jr.  
*Secretary:* William Steeper  
*Historian:* John J. Curry  
*Chapter Counselor:* Fred R. Weaver, 11 Johnson Park, Utica, N.Y.

RHO.....RUTGERS UNIVERSITY  
*Address:* 26 Union St., New Brunswick, N.J.  
*President:* Richard Snethen

*Secretary:* Raymond Wheaton  
*Historian:* Paul Lenhart  
*Chapter Counselor:* N. Ellsworth Wheaton, Jr., 25 Myrtle St., Bloomfield, N.J.

### BETA PROVINCE

CHIEF: Albert G. Jahn, *Omicron '23*  
3620 N. 15th St., Philadelphia, Pa.

NU.....LEHIGH UNIVERSITY  
*Address:* 514 Delaware Ave., Bethlehem, Pa.  
*President:* Richard C. Hopkins  
*Secretary:* John E. Devitt  
*Historian:* Laurence A. Mosier  
*Chapter Counselor:* Robert F. Herrick, Lehigh University, Bethlehem, Pa.

OMICRON.....PENNSYLVANIA STATE COLLEGE  
*Address:* Alpha Kappa Pi House, State College, Pa.  
*President:* Gus Henrich  
*Secretary:* James Boltz  
*Historian:* William A. Lynch  
*Chapter Counselor:* Gordon D. Kissinger, Peoples Bank Bldg., State College, Pa.

ALPHA GAMMA.FRANKLIN & MARSHALL COLLEGE  
*Address:* 533 W. Chestnut St., Lancaster, Pa.  
*President:* Richard W. Hyde  
*Secretary:* Richard S. Dougherty  
*Historian:* Charles Snyder  
*Chapter Counselor:* Dr. Robert W. Higgins, 709 N. Pine St., Lancaster, Pa.



# GAMMA PROVINCE

CHIEF: L. Milton Van Horn, *Alpha Eta '40*  
Milton, Wisconsin

ALPHA ETA ..... MILTON COLLEGE  
Address: Milton College, Milton, Wis.  
President: George Lake  
Secretary: Alden D. Hayes  
Historian: William Burdick  
Chapter Counselor: John N. Daland, Milton, Wis.

ALPHA MU ..... CARTHAGE COLLEGE  
Address: Carthage College, Carthage, Ill.  
President: Milus W. Bonker  
Secretary: Charles Bachmann  
Historian: Charles Wendorff  
Chapter Counselor: Calvin Sifferd, Carthage, Ill.

# DELTA PROVINCE

CHIEF: Marshall Durham, *Chi '40*  
603 Maple Ave., Burlington, N.C.

ETA ..... PRESBYTERIAN COLLEGE  
Address: c/o Alpha Kappa Pi Lodge, Clinton, S.C.  
President: Martin Abbott  
Secretary: Norman Williamson  
Historian: Earl F. Cody  
Chapter Counselor: Fred Allen, Clinton, S.C.

XI ..... NORTH CAROLINA STATE COLLEGE  
Address: 6 Ferndell Lane, Raleigh, N.C.  
President: Raymond Wood  
Secretary: John J. Kuiper  
Historian: John Patterson  
Chapter Counselor: Dr. Byron E. Lauer, 1618 Hillsboro St., Raleigh, N.C.

CHI ..... WAKE FOREST COLLEGE  
Address: Alpha Kappa Pi House, Wake Forest, N.C.  
President: Clarence E. Bridger  
Secretary: Alden Kuhlthau  
Historian: J. M. Lee  
Chapter Counselor: Dr. Herman Parker, Wake Forest, N.C.

ALPHA THETA ..... WOFFORD COLLEGE  
Address: Alpha Kappa Pi Lodge, Spartanburg, S.C.  
President: W. H. Koopmann, Jr.  
Secretary: Dan Ferguson  
Historian: L. C. McFadden, Jr.  
Chapter Counselor: James O. Crosby, Jr., 150 N. Dean St., Spartanburg, S.C.

# EPSILON PROVINCE

CHIEF: Melvin A. Haas, *Tau '40*  
31 Sears Ave., Melrose, Mass.

KAPPA .....  
.. MASSACHUSETTS INSTITUTE OF TECHNOLOGY  
Address: 13 Gloucester St., Boston, Mass.  
President: Rea Stanhouse  
Secretary: Benjamin Kingsbury  
Historian: Frank A. Yett

TAU ..... TUFTS COLLEGE  
Address: 106 Professor's Row, Medford, Mass.  
President: Arthur Crane  
Secretary: Walter Scanlan  
Historian: Alvin Buck  
Chapter Counselor: Frank B. Rogers, 31 Park Dr., Boston, Mass.

# ZETA PROVINCE

CHIEF: Jackson W. Rafeld, *Psi '33*  
3564 Normandy St., Shaker Heights, Ohio

IOTA ..... MOUNT UNION COLLEGE  
Address: 1690 S. Union Ave., Alliance, Ohio  
President: Curtis Coleman  
Secretary: John Sponseller  
Historian: Ryder Cook  
Chapter Counselor: Malcolm Kienzle, Canton, Ohio

ALPHA BETA ..... TRI STATE COLLEGE  
Address: 113 N. Superior St., Angola, Ind.  
President: Weldon Reeder  
Secretary: Rufus Rumpfolt  
Historian: Harold A. Thompson  
Chapter Counselor: Millford E. Collins, 308 E. Maumee St., Angola, Ind.

ALPHA DELTA ..... UNIVERSITY OF TOLEDO  
Address: 2603 Montebello Rd., Toledo, Ohio  
President: George Maludy  
Secretary: Frank Dennen  
Historian: Basil Foussianes  
Chapter Counselor: John B. Brandeberry, University of Toledo, Toledo, Ohio

ALPHA EPSILON ..... UNIVERSITY OF CINCINNATI  
Address: 2929 Jefferson Ave., Cincinnati, Ohio  
President: Ralph Swartz  
Secretary: George Maras  
Historian: George Maras  
Chapter Counselor: Ray Allison, Cincinnati, Ohio

ALPHA ZETA ..... WAYNE UNIVERSITY  
Address: 641 W. Hancock St., Detroit, Mich.  
President: Lawrence Smith  
Secretary: Lorrin Lammers  
Historian: William Mahan, Jr.  
Chapter Counselor: David McElroy, 12826 Marlowe Dr., Detroit, Mich.

ALPHA LAMBDA ..... OHIO NORTHERN UNIVERSITY  
Address: 503 S. Gilbert St., Ada, Ohio  
President: Harry L. Bozarth  
Secretary: Richard N. Ford  
Historian: Gerald Wibbler  
Chapter Counselor: Dr. Thomas J. Smull, Ada, Ohio

# ETA PROVINCE

CHIEF: Albert W. Heinmiller, *Zeta '28*  
13th & K Sts. N.W., Washington, D.C.



ALPHA IOTA ..... AMERICAN UNIVERSITY  
*Address:* American University, Washington, D.C.  
*President:* John Abbadessa  
*Secretary:* William McMillan  
*Historian:* Edward Wood  
*Chapter Counselors:* John E. Bentley and Walter F. Shenton, American University, Washington, D.C.

#### THETA PROVINCE

CHIEF: Rufus D. McDonald, *Iota* '32  
 235 Naples Ter., New York City

DELTA.....BROOKLYN POLYTECHNIC INSTITUTE  
*Address:* 54 Sidney Pl., Brooklyn, N.Y.  
*President:* Robert Beischer  
*Secretary:* Harry Knutson  
*Historian:* L. W. Fromm, Jr.  
*Chapter Counselor:* Albert Jansen, 523 Eighth St., Brooklyn, N.Y.

THETA.....COLUMBIA UNIVERSITY  
*Address:* 504 Hartley Hall, Columbia Dr., New York City  
*President:* Arthur W. Hooper  
*Secretary:* Howard L. Morgan  
*Historian:* Antonio Amico  
*Chapter Counselor:* Joseph Lawler, 21-58 28th St., Astoria, L.I., N.Y.

ALPHA ALPHA.....HARTWICK COLLEGE  
*Address:* 69 Spruce St., Oneonta, N.Y.  
*President:* Jerol Kent  
*Secretary:* Murray Mayes  
*Historian:* Charles Deitz  
*Chapter Counselor:* LeRoy Weller, 300 Main St., Oneonta, N.Y.

ALPHA KAPPA ..... RENSSELAER POLYTECHNIC INSTITUTE  
*Address:* 195 Hoosick St., Troy, N.Y.  
*President:* Jack Forbes  
*Secretary:* Charles Rabolli  
*Historian:* Richard Sittner

#### IOTA PROVINCE

CHIEF: Durward D. Darnell, *Mu* '33  
 P.O. Box 564, Charleston, W.Va

LAMBDA.....BETHANY COLLEGE  
*Address:* Alpha Kappa Pi House, Bethany, W.Va.  
*President:* Lewis S. Deer  
*Secretary:* John R. Taylor  
*Historian:* Richard M. Wallace  
*Chapter Counselor:* Dr. Bernal R. Weimer, Bethany, W.Va.

MU.....MARSHALL COLLEGE  
*Address:* 1505 4th Ave., Huntington, W.Va.  
*President:* Frank Qulia  
*Secretary:* Chas. Tucker  
*Historian:* Andrew Kantor  
*Chapter Counselor:* Romeo Brooks, 677 5th Ave., Huntington, W.Va.

PSI.....WEST VIRGINIA WESLEYAN  
*Address:* 15 Meade St., Buckhannon, W.Va.  
*President:* Forrest Stump  
*Secretary:* Kenneth R. Knox  
*Historian:* William W. Simpson  
*Chapter Counselor:* Allen T. Hamner, Jr., Buckhannon, W.Va.

### The Alumni Chapters

BALTIMORE ALUMNI CHAPTER  
*Chairman:* Robert C. Crawford, *Phi* '34, 3161 Ravenwood Ave., Baltimore, Md. Address chairman for time and place of meetings.

BOSTON ALUMNI CHAPTER  
*Secretary:* Jerry J. Costello, *Tau* '33, 22 Circuit Ave., Lynn, Mass. Call secretary for time and place of meetings

CHICAGO AREA ALUMNI CHAPTER  
*Chairman:* John A. Tockstein, *Sigma* '36, 2320 S. Hamlin Ave., Chicago, Ill. Address chairman for time and place of meetings.

HUNTINGTON ALUMNI CHAPTER  
*Secretary:* George L. Garner, *Mu* '35, 2216 11th Ave., Huntington, W.Va. Meets first Thursday of each month. Call secretary for place of meetings.

METROPOLITAN ALUMNI CHAPTER  
*Secretary:* Clifford T. Graham, *Delta* '32, 15 Polhemus St., Brooklyn, N.Y. Address secretary for time and place of meetings.

NORTHERN NEW JERSEY ALUMNI CHAPTER  
*President:* Kenneth A. MacFadyen, *Alpha* '30, Lake Drive West, Packanack Lake, N.J. Meets second Tuesday of each month at Alpha Chapter, 38 James St., Newark, N.J.

OHIO ZETA ALUMNI CHAPTER  
*President:* Donald Heffelfinger, *Iota* '33, 230 S. Lincoln Ave., Alliance, Ohio. Address president for time and place of meetings.

PHILADELPHIA ALUMNI CHAPTER  
*Secretary:* Leon R. Fencil, *Omicron* '28, 5942 N. Reach St., Philadelphia, Pa. Address Secretary for time and place of meetings.

STATEN ISLAND ALUMNI CHAPTER  
*Secretary:* George Mayer, *Beta* '38. Call Secretary at Gibraltar 2-2092 for place of meeting. Meets first Wednesday of each month.







# OUR OPPORTUNITY FOR SERVICE

★ ★ ★

*Both to you in college and to  
your friends in the Armed Forces*

**TODAY** your Official Jewelry Contract serves you more  
valuably than ever.

**PROTECTION** of your name and insignia has been made  
possible through your loyal patronage and cooperation in  
discouraging unauthorized manufacture of your insignia.

**ANTICIPATING** the present shortage of material and  
labor, we have prepared sizable stocks of your approved  
insignia for your protection, to assure you of reasonably  
prompt delivery free from any price advance.

★ ★ ★

## *Free Copy*

### **BALFOUR BLUE BOOK**

features fraternity jewelry,  
saddle leather, military insignia,  
pass cases, writing portfolios,  
and gifts for men in the  
Service.

*Mail post card for*  
**YOUR FREE COPY**

## **STATIONERY**

### *Samples Free on Request*

Weekly letters on fine crested  
paper keep up the morale of  
friends in the Service. Use  
crested stationery for rushing.

**FREE SAMPLES**  
*Invitations—Programs—  
Place Cards*

## **CHRISTMAS CARD SAMPLES FREE**

Mail your order early. Send cards to all  
friends in the Service.

★ ★ ★

*Official Jeweler to Alpha Kappa Pi*

**L. G. BALFOUR COMPANY**

**ATTLEBORO**

**MASSACHUSETTS**