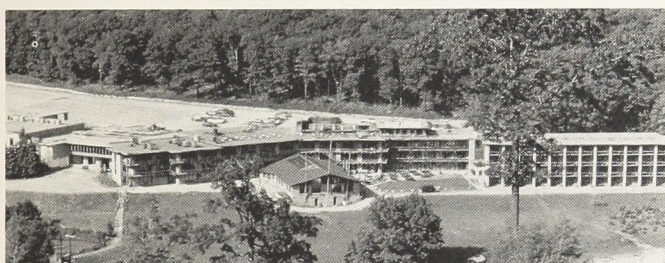


Alpha Sigs called to Convention honoring retiring Executive Secretary Ralph Burns



Ralph Burns, top photo right, shows Grand Senior president George Trubow the special Lambda Chi Alpha Fraternity Order of Interfraternity Service which he received. Burns, who has served as Executive Secretary of Alpha Sigma Phi for 40 years, has been recognized as a leader in America's fraternity world. He will officially retire from his post at the 1976 National Convention which will be held at the famous Seven Springs Resort, Champion, Pa., (shown above), on August 11-15, 1976.

On the inside

Page 2—A look at the Burns Era, some photographs and thoughts about a remarkable career.

Page 3—Insurance program offered through Alpha Sigma Phi may save you dollars.

Page 4—Special section on the involved alumnus of Alpha Sigma Phi. Without the support and assistance of its alumni, the "Old Gal" just couldn't operate in the way that it does. It's a proven equation—the more involved alumni become, the better Alpha Sigma Phi becomes.

Page 8—Coupon to clip and send in. It'll bring you information about the 1976 National Convention that you'll want to be a part of.

Forty years with a single organization is a remarkable record in any business.

Forty years as Executive Secretary of a Fraternity is almost unheard of. Except for Alpha Sigma Phi's own Ralph Burns. The man who has come to be regarded as "Mr. Alpha Sig" has announced that he will retire as of the 1976 National Convention.

Plans had already been made to salute the 40-year record of Burns at the Convention. Now the entire Convention will become a tribute to a remarkable man.

Grand Junior President Robert A. Allen is chairman of the Convention, set for August 11-15, 1976 at Seven Springs Resort, Champion, Pennsylvania.

Brother Allen has issued a special call to Alpha Sigs everywhere to make a special effort to attend the '76 Convention. *"Every Alpha Sig has been influenced by Ralph Burns. In fact, it'd be hard to find a member today whose shingle doesn't bear Ralph's signature. We hope there will be a record number of alumni and undergraduates in attendance to make the '76 Convention a memorable one in every way."*

"America is celebrating its 200th anniversary this year," states Grand Senior President George Trubow. *"And the American Fraternity system also marks its 200th year in 1976. For Alpha Sigma Phi, the retirement of Ralph Burns indicates that this indeed is a history-making year for the "Old Gal." We will come together at Convention to celebrate Brotherhood and honor one who exemplifies in such a way as to challenge us one and all."*

Trubow indicated that efforts are underway to recruit staff support for the Fraternity so that there may be an easy transition of leadership. Burns will remain available to the Fraternity as a consultant as well. □

Ralph: . . . the 'Dean' . . . 'Mr. Alpha Sig' for 40 years, the definition of "brother"



At the Centennial of Alpha Sigma Phi, former executive secretaries join the 6th Executive Secretary, Ralph Burns. Left to right, Charles Hall (1919-1924), A. Vernon Bowen (1928-1932); Allen B. Kernie (1932-1934) and Burns.

Ralph Burns, in 1936, was a young man taking the helm of a Fraternity old in heritage but young in its growth and development. For it had hardly been 25 years since the revival of Alpha and Alpha Sigma Phi's real march to national prominence. Ralph took over the New York city office of Alpha Sigma Phi just in time to help in the restructuring of the national organization. In 1939, he helped lead Phi Pi Phi into the Alpha Sig fold. World War II saw him forced to take a second job and run Alpha Sigma Phi at night, unsalaried. At the end of the war, it was Burns who challenged Alpha Sigs everywhere to pick up the remnants of their chapters and rebuild the "Old Gal." He was there for the major merger of Alpha Kappa Pi into Alpha Sigma Phi. The moving of headquarters from New York to Delaware, Ohio. He was instrumental in the founding of the National Interfraternity Conference and set the pace for interfraternity co-operation on a national basis. Burns was later to serve as head of the Fraternity Executive's Association and the College Fraternity Editor's Association. In the fraternity world, among university administrations everywhere, Ralph is known as the "Dean." And it was the "Dean" who was there for the merger with Alpha Gamma Upsilon. He was there to lend a steady hand as the "Old Gal" faced the turmoil or the sixties...and to lead her out to positive new growth. His signature graces an untold number of Alpha Sig shingles. Thousands and thousands of Alpha Sigs have known Ralph Burns. Which is remarkable. But even more remarkable is that he knows and remembers most of them.



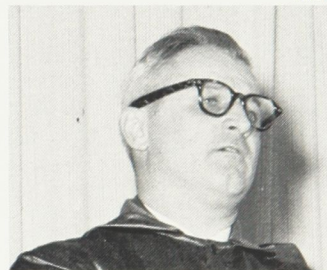
1956



1948



1956



1954

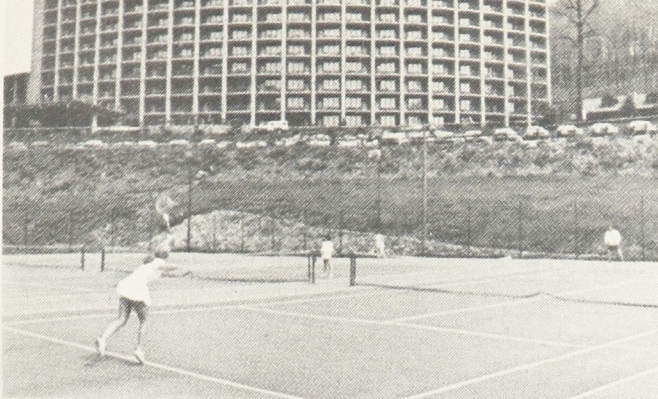


1952



Burns, far left, on visit to chapter (Alpha Psi, Presbyterian), greets Dave Blankenship, former national president of Alpha Kappa Pi and former ΑΣΦ Grand Council member, Geoff Hall (Assistant Province Chief, Province VIII) and Alpha Psi HSP John Erwin. (1974).

Small wonder that on a recent test, one hapless pledge wrote "Ralph Burns" when asked to name the founder of Alpha Sigma Phi. Any Alpha Sig will tell you that's the wrong definition for Ralph. The only appropriate definition is "Brother." □



Page 8 Coupon brings information on Convention

Golf? Tennis? Swimming? Hiking? Great food?

It's all there at Seven Springs, Champion, Pa., scene of the 1976 National Convention of Alpha Sigma Phi. The beautiful resort nestles in a scenic mountain area just an hour from Pittsburgh.

The biennial Convention of Alpha Sigma Phi will be called to order on Wednesday, August 11 and will conclude on mid-day, Sunday, August 15.

It will be a rollicking good time for all as only an Alpha Sig get-together can be. Special programs for wives. Social events and outings throughout the week. Informal gatherings in front of the chalets that will be headquarters for Alpha Sig delegates.

Chapters have been urged to send as many representatives in addition to their official delegate as possible. And alumni everywhere are being urged to come to what will be a mammoth Alpha Sig reunion. A coupon on Page 8 may be sent for room rates and other information. Anyone may attend for the entire period or for only a portion of the Convention. The resort makes the Convention a perfect family vacation destination.

Grand Junior President Robert Allen, Convention chairman, is planning a full schedule of events that will appeal to alumnus and collegiate members alike.

It will be a memorable, fun-filled occasion. Be sure that you're a part of it! □

Here's a cost break on insurance; see page 8 coupon.

Believe it or not, Alpha Sigma Phi offers most members a way to save money and provide something very vital for themselves and their families.

It's the Fraternity-sponsored Hospital Money Insurance Plan.

The mass purchasing power represented by Alpha Sigma Phi, coupled with group administration of the plan, makes the premium rates for this hospital insurance program remarkably attractive. The "Old Gal" is proud to be able to offer you this additional membership benefit.

Since its inception, the plan has been underwritten by CNA Insurance (Continental Casualty Company). Recently all aspects of the administration of the plan have been transferred to American Insurance Administrators, 1373 Grandview Ave. Columbus, Ohio 43212.

This hospital plan is designed to supplement present medical care coverage, which is often needed to fill in where the limitations, exclusions, and omissions in one's primary health insurance do not cover. Inflation has outpaced the benefits available from primary health insurance, too, in many cases.

Benefit payments are made directly to the insured member. A choice of benefit amounts up to \$100 per day, payable from the very first day of hospitalization, is available. There is no maximum benefit period for hospitalization until you reach age 65. After age 64, the maximum benefit period, 365 days.

Costs vary according to age, of course, but an example of the remarkably attractive premium rates would be \$158.10 payable semiannually, for a brother under 40, his wife, and children. That amount would guarantee \$40 a day in benefits for every day of hospitalization.

A Special Enrollment Period is being announced by administrators of the plan, and a mailing is going out to all brothers. During this Special Enrollment Period **all brothers under age 65**, regardless of health condition or history, will be accepted into the plan. Brothers under age 65 cannot be turned down! □

Insurance administrator Alan E. Zink, left, confers with Executive Secretary Burns.



Involved alumni: backbone of Alpha Sigma Phi

One of the purposes of Alpha Sigma Phi is “. . . to foster the maintenance of college homes by chapters for their undergraduate members.”

Because new membership comes from the collegiate level, much of the attention of the Fraternity is focused there. That is where the vitality of the Fraternity is . . . where its programs evolve and are carried out. Indeed, most Alpha Sigs identify most with their chapter and are most interested in what is happening on the campus.

But other purposes of Alpha Sigma Phi include “. . . to promote college loyalties . . . to perpetuate friendships, to cement social ties within its membership.” And that applies to Alpha Sigs of all ages. One of the main purposes of the Fraternity is “. . . to assist in the building of character.” Through the shared experience of her teachings and her rituals, every Alpha Sig is challenged to that goal throughout life.

It is the involved, active body of alumni in Alpha Sigma Phi who assure the perpetuation of the “Old Gal.” Without them, she could not boast of her proud 130 year heritage or look to a promising future.

The men who remember the oaths they took to Alpha Sigma Phi, who remember that they were taken for a lifetime, not just for college years, are the men who make Alpha Sigma Phi what it is. The involved alumnus is the backbone of Alpha Sigma Phi. In this special section, we take a look at some of them, their work and salute them for their efforts. □

The givers . . . they keep the “Old Gal” going!

This past year, 1,539 members of Alpha Sigma Phi sent checks to the Fraternity. Checks that amounted to \$20,734.25. A vital sum to the “Old Gal.”

For, short of raising collegiate fees to unreasonable rates, the Fraternity could not offer a worthwhile program without alumni financial support.

What did the money do?

It helped underwrite chapter visitation. It helped

underwrite *The Tomahawk* (whose endowment fund is too small to cope with today's printing costs). It helped underwrite *The Old Gal Gazette*; and production of a new pledge manual.

Part of that sum was earmarked for the Memorial Fund. The Memorial Fund helps underwrite the biennial Education Conference, provides scholarships and grants for outstanding collegiate brothers and special awards to chapters.

But there is concern. The number of contributors this past year dropped by over 200 from previous years. The total number of contributors represents only 3.72% of the membership.

In comparison with other fraternities of similar size, Alpha Sigma Phi needs to improve the showing of financial loyalty. One other fraternity, not known for wealthy alumni, reports over \$32,000 from 1300 contributors in only six months. Almost all fraternities of comparable size report alumni contributions in excess of \$50,000 annually.

While large gifts are certainly welcomed, what Alpha Sigma Phi needs is many more alumni writing a small annual check. The cumulative effect is powerful.

Alumni have set for themselves a voluntary annual “dues” rate of \$10 a year. As Alpha Sigma Phi moves into a new period of growth and development, it must look to its alumni members for continuing and growing financial loyalty. □

Alumni Councils: potential strength for The Fraternity

At one time, members evidenced their lifetime commitment to Alpha Sigma Phi through participation in chartered alumni councils across the country.

Then most of the Councils gradually dwindled.

But, just as there is new vitality and interest in fraternity on the campus, there has been renewed interest in establishing Alumni Councils in major cities.

Councils provide vital support for Alpha Sigma Phi. They often take on chapters as projects, provide guidance and help on extension, and assist undergraduates with various needs.

Councils assist the Fraternity in maintaining updated address files. And it is through the Councils that the Fraternity may find those alumni who can and will serve in administering and managing Alpha Sigma Phi.

The development of a renewed network of

Alumni Council is perhaps the leading need of Alpha Sigma Phi. It is also the area that offers the most potential strength to the Fraternity.

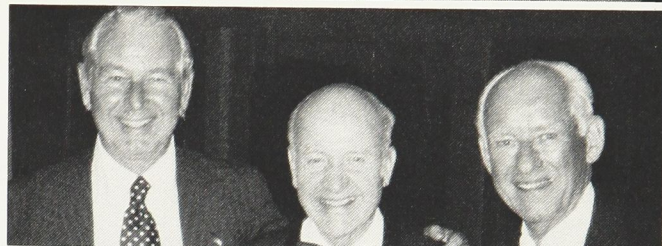
The Bay Area Alumni Council, San Francisco, is the oldest and most active group. Tracing its history to 1913, it was officially chartered in 1944. The Council's annual Founders' Day banquet is a justly-fabled event. Its monthly luncheon meetings always feature an interesting program. Information about the Council, which has representatives of 22 different chapters is members, can be obtained from Secretary-Treasurer T.P. Wadsworth, Nu '17, 1952 Los Angeles Avenue, Berkeley, California 94707.

Also holding regularly scheduled luncheon meetings plus annual social events is the Sacramento Alumni Council. For information, Contact Jim Cook, Sacramento '63, 5840 18th Ave., Sacramento, California 95820.

Activities have been underway this year to revive Washington, D.C.'s famed Third Thursday Thirsters. For information, contact Beta Chi chapter.

Greg Sinise, Purdue '70, 7968 Silverleaf Drive, Indianapolis, Indiana 46260 is heading up a group that is working on forming an alumni council in that area.

Want to have fun and help Alpha Sigma Phi? Start an alumni council. Contact Director of Alumni Affairs, Stan Miller, Massachusetts Mutual Life, Suite 1001, Life Building, 300 Main St., Lafayette, Indiana 47901. Brother Miller can provide suggestions, materials and guidelines. □



The Bay Area Council Founder's Day Banquet is always a special event. Top: Peter E. Sylvester, Tau '50, (right), presents undergraduate Patrick E. Cannon, Tau '74, with the Council's annual scholarship. Second picture—T.P. Wadsworth, Nu '17, receiving the Delta Beta Xi award from Ed Drew, Nu '16. Third—Henry A. Dietz, Nu '25, Frank R. Denke, Nu '26 and Arthur H. Breed, Nu '23, gather before professional pianist Denke entertains the group. Fourth picture—George V. "Sal" Williams, Nu '13 and Gene Sturgis, Nu '13 share pledge class memories. At left is Ro Fontana, Nu '27 and '74 president of the Council who also received a Delta Beta Xi award. Wallace M. Burr, Mu '23, is now president, succeeding Tory Bryant, Nu '30.

The "sharers" — a little help goes a very long way!

The phone rings. A chapter has somehow gotten into trouble with local zoning laws. Luckily, an alumnus who is an attorney has told Alpha Sigma Phi to call on him, if needed. The Fraternity calls and the brother helps the chapter solve the problem and shows them how to keep out of future difficulties.

A chapter treasurer is overwhelmed with the books he must keep. An alumnus with a financial background is contacted and helps the undergraduate learn how to manage the money and properly keep track of it.

A chapter needs to make improvements on its quarters. Alpha Sigma Phi contacts several alums. One is a contractor. Another is in the building supply business. Their guidance helps the chapter save money and avoid costly mistakes.

A collegiate brother is interested in a special

career. The chapter advisor puts him in touch with another alumni brother who is working in that profession. The undergraduate learns of the opportunities and eventually enters the field.

The examples are endless. Concerned alumni who let Alpha Sigma Phi know that they can be called on for special needs. It doesn't have to be an ongoing, week-in, week-out involvement. But their support is extremely valuable to the national organization, to chapters and to individual undergraduate brothers as well.

These "sharers," who are willing to give from time to time of themselves and their expertise, are a tremendous resource to Alpha Sigma Phi. And they exemplify what "brotherhood" is all about.

You can be one of these special men. Just drop a note to headquarters. □

National officers keep a watchful eye on the “Old Gal”

Setting direction, policy and overseeing the management of Alpha Sigma Phi is a group of very involved alumni—the national officers.

Central is the role of the Grand Council, men elected by collegiate members to be responsible as a board of directors in the running of the Fraternity between National Conventions.

More and more these men are becoming actively involved in many areas of operation as well as policy setting. They are contacting chapters, working on extension and conventions, planning and directing national events, managing finances and making decisions. Their work involves a lot of telephoning, corresponding, traveling and meetings.

The Council is currently composed of GSP George Trubow, Washington, D.C. attorney and government official; GJP Robert Allen, Johnston, Pa., executive; GS George Lord, Delaware, Ohio, attorney and state government official; Treasurer Alfred B. Wise, Delaware, Ohio banking executive; GM Louis DeLuca, Staten Island, N.Y., college development director; Councilor Richard A. Dexter, Wakefield, N.J., telephone company executive; and Councilor Richard R. Gibbs, Tulsa, Oklahoma, who heads several business firms there.

Backing up the Council are the general officers: Grand Chaplin, Father Richard A. Byrne, Washington, D.C.; Grand Historian Frank Krebs, Charleston, W. Va., retired college administrator; and Director of Alumni Affairs, Stan Miller, insurance executive, Lafayette, Indiana. National Province Programs Coordinator Tom Wajnert, San Francisco, U.S. Leasing Executive; and Director of Publications Evin Varner, Charlotte, N.C., advertising agency principal. Also Director of Expansion Peter L. Tourtellot, Greensboro, N.C., sportswear firm president.

The Grand Council and General Officers of the Fraternity represent another area for service from involved alumni. Interested in becoming involved at this level? Let Alpha Sigma Phi know! □

Province program supports chapters, promotes interchange

Like a large business, Alpha Sigma Phi is broken down into easier-to-manage divisions. Or, in our case, Provinces. And there is a constant need for active, involved alumni to serve as Province Chiefs and assist in Province programs.

The U.S. is broken up into 12 Provinces. Each grouping of chapters coordinates through the Province Chief. He tries to keep an eye out for needs and challenges that each chapter faces, he tries to get other alumni involved with each chapter . . . he's there if a chapter has a problem of any kind. Each Province tries to hold an annual Conclave that is a sharing and learning experience for all chapters attending.

Province Chief Jim Hamner comments on his role: *"I have found my involvement to be extremely rewarding. I've enjoyed working with the chapters . . . and have found them extremely eager to receive help from alumni members. Chapters need alumni help to develop to their fullest potential. Alumni seem to sit back waiting to be asked . . . undergraduates seem to be reluctant to ask for help, unsure of how to go about establishing contact with alumni. The Province Chief and other active alumni can serve a vital role in this regard."*

It's a big job . . . but a vital, rewarding one. There's a place for you in Province work. If you're interested, drop a note to the National Province Program Coordinator: Thomas C. Wajnert, VP-U.S. Leasing Corp. 633 Battery Street, San Francisco, California 94111. □

ΑΣΦ funds managed by loyal alumni brothers

There are five funds of Alpha Sigma Phi. **The General Fund** is the basic operating fund. It's under the control of the Grand Council as is **The Reserve Fund** which grants loans to chapters for improvements and emergency needs.

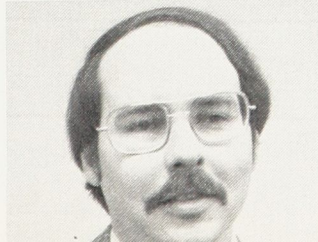
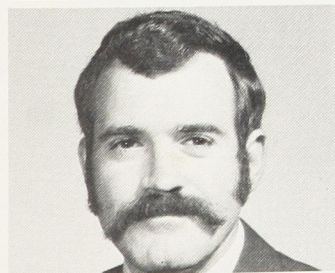
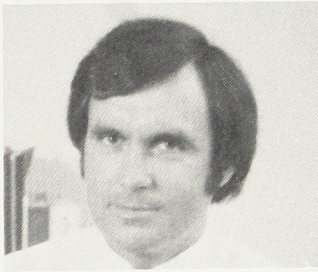
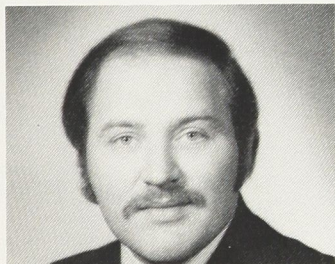
The Memorial Fund is a tax-exempt fund that underwrites scholarships and the educational program of the Fraternity. Its trustees are Paul J. Cupp, Pennsylvania '21, Bryn Mawr, Pa., retired business executive; Dr. Raymond E. Glos, Illinois '22, Oxford, Ohio, Dean Emeritus, School of Business Administration, Miami University; and Dr. Robert E. Miller, Connecticut '49, President, Quinebaug Valley College, Danielson, Conn.

The Tomahawk Fund helps underwrite the publication of our national magazine. Its investment committee, all located in Cleveland, Ohio, are: Richard Sanders, Missouri Valley '62, account executive with Merrill Lynch; Norman Hadsell, Ohio Wesleyan '52, analyst with McDonald & Company and Jack R. Staples, Ohio Wesleyan '31, partner in Fulton, Reid & Staples.

The ASP Corporation, the national housing corporation of Alpha Sigma Phi, is administered by the following directors and officers: Herbert L. Dunham, Michigan '17, Grosse Pointe, Michigan, retired from a distinguished career in retailing; John M. Heaphy, Michigan '47, partner in Vandever, Garzia, Tonkin, Kerr & Heaphy of Detroit; Dr. L. Donald Weston, Michigan '47, principal of Pattengill School, Berkley, Michigan; Barry Jensen, Iowa State '63, Birmingham, Michigan newspaperman; Ralph Holzhauer, Michigan '40, a practicing architect of and Alfred B. Wise, Baldwin-Wallace '43, Grand Treasurer of the Fraternity and President of the Delaware County Bank, Delaware, Ohio.

It is the gifts of brothers to these funds and the dedication of these brothers who watch over and administer the funds that keeps Alpha Sigma Phi operating. □

Some current Province officials (See story on Page 6). At left, Tom Wajnert, National Province Programs Coordinator. First row, left, Arthur Cox (IV); right—James H. Hamner (I); second row, left, Geoff Hall (VIII), right—William H. Klaban (IX); bottom row, left, Bruce Burns (V), right, Jeff Brice (VI). Volunteers are needed in the Province Program. If you can help a few hours a month, please let Brother Wajnert know.



Does alumni involvement help? Just ask Beta Gamma chapter, Bethany. Shown here is a freshman surrounded by Beta Gamma alumni who came back this year to help the chapter in its rush program. The result? A big pledge class that was the best on campus, the biggest in years!

Every chapter needs support, assistance of Alpha Sig alumni

Want to get involved and know that you're making a major contribution? Help an undergraduate chapter of Alpha Sigma Phi. Grand Chapter Advisors do yeoman work. But the healthy chapter is one that has a large number of alumni involved.

Join your chapter's Alumni Association or Corporation (join the one nearest you as well.) And join with more than a check. Because it is personal guidance, sharing of experience and the continuity of alumni that makes the difference.

Alumni and undergraduates work together in setting standards and expectations of the chapter. Chapter officers and committee chairmen present written goals and programs for review by the Alumni Association. Standards on house maintenance, fiscal responsibility and community behavior are developed by alumni and undergraduate brothers. Alumni can help by assisting with retreats or programs on organization management, leadership development, career planning or other things that will enrich the chapter program.

Alumni have to be careful not to "make Alpha Sigma Phi what it used to be." Their goal should be to help the undergraduates decide what they want it to be and how to make it become that.

Get in touch with Headquarters or your nearest chapter and say you'll help. You'll be glad you did! □

A look at alumni contributions by chapters

The alumni contribution program is vital to the well-being of Alpha Sigma Phi. Here's a more detailed look at alumni giving for the past year. Each chapter is listed, followed by the number of contributors, then the number of living brothers for that chapter. The percentage of living brothers from the chapter who gave is also listed.

American	9 (401)	2%	Eastern Michigan	4 (198)	2%
Atlantic Christian	5 (256)	2%	Findlay	2 (146)	1%
Baldwin-Wallace	15 (698)	2%	Hartwick	9 (461)	2%
Bethany	10 (393)	3%	Illinois	58 (1,028)	6%
Bowling Green	10 (265)	4%	Illinois Tech	46 (616)	7%
Cincinnati	7 (258)	3%	Indiana	5 (181)	3%
Coe	3 (211)	1%	Indiana Tech	2 (86)	2%
Concord	2 (121)	2%	Iowa State	35 (470)	7%
Cornell	23 (829)	3%	Lawrence Tech	3 (91)	3%
Davis & Elkins	16 (604)	3%	Lehigh	25 (451)	6%

Numbers: The top 10 chapters in terms of numbers of alumni giving are Illinois, Penn State, Ohio Wesleyan, Ohio State, California, Illinois Tech, Michigan, Purdue, Iowa State and Oklahoma.



Mail today!

Alpha Sigma Phi Headquarters
24 W. William Street
Delaware, Ohio 43015

- ☐ Please send me information concerning the 1976 National Convention . . . perhaps I can attend!
- ☐ Please have the Alpha Sigma Phi insurance administrators send me information concerning this program and how it can save me and my family real money.
- ☐ Enclosed is a contribution to the Fraternity. Please apply toward the _____ Fund.
- ☐ I'd like to get re-involved with Alpha Sigma Phi. Please have the Director of Alumni Affairs send me some information on how I might help.

Name _____

Chapter _____

Address _____

City _____

State _____ Zip _____

Your profession _____

Loyola	5 (177)	3%	Carnegie Tech	6 (105)	6%
Lycoming	3 (180)	2%	Carthage	0 (31)	—
Marietta	24 (914)	3%	Case	4 (56)	7%
Marshall	10 (500)	2%	Centre	0 (21)	—
Michigan	45 (677)	7%	Chicago	7 (167)	4%
Milton	5 (401)	1%	Colorado	21 (332)	6%
Missouri Valley	15 (454)	3%	Connecticut	10 (546)	2%
Morris Harvey	12 (406)	3%	Dartmouth	0 (143)	—
Northern Michigan	2 (111)	2%	Detroit Inst. Tech.	4 (58)	7%
Ohio Northern	10 (556)	2%	Duquesne	0 (56)	—
Ohio State	49 (540)	9%	Ellsworth	0 (26)	—
Oklahoma	35 (646)	5%	Franklin-Marshall	0 (111)	—
Oregon State	26 (658)	4%	Harvard	7 (287)	2%
Pennsylvania	35 (697)	5%	Iowa	6 (208)	3%
Penn State	56 (998)	6%	Kentucky	17 (341)	5%
Presbyterian	9 (402)	2%	U. of Mass.	0 (554)	—
Purdue	43 (732)	6%	MIT	0 (45)	—
R.P.I.	4 (432)	1%	U. of Miami	1 (65)	2%
Rio Grande	3 (95)	3%	Michigan State	8 (143)	6%
Rutgers	17 (653)	3%	Middlebury	3 (234)	1%
Slippery Rock	0 (55)	—	Minnesota	10 (108)	9%
Stanford	35 (713)	5%	Missouri	8 (288)	3%
Stevens	27 (414)	7%	Mt. Union	7 (173)	4%
Tarkio	1 (52)	2%	Nebraska	18 (177)	10%
Toledo	14 (713)	2%	Newark College of		
Tri State	20 (868)	2%	Engineering	6 (179)	3%
Tufts	14 (513)	3%	New Hampshire	0 (28)	—
Wagner	12 (602)	2%	NC State	0 (43)	—
Wake Forest	14 (386)	4%	St. John's	0 (24)	—
Washington	35 (1,146)	3%	Ohio Wesleyan	50 (689)	7%
Westminster	27 (967)	3%	Sacramento	5 (147)	3%
Widener	9 (318)	3%	Syracuse	5 (307)	2%
Adrian	3 (15)	20%	Tulane	3 (191)	2%
Alabama	12 (321)	4%	Washington U.	1 (72)	1%
Arizona	2 (101)	2%	Wayne State	11 (508)	2%
Bridgeport	0 (35)	—	West Virginia	5 (203)	2.5%
Brooklyn Poly In.	7 (258)	3%	W. Va. Wesleyan	7 (366)	2%
Buffalo	5 (409)	1%	Wisconsin	19 (199)	10%
California	48 (595)	8%	Wofford	0 (141)	—
UCLA	27 (478)	6%	Yale	17 (384)	4%

Equivalent: The income from alumni giving last year represents the equivalent of almost \$300,000 in endowment invested at 7%.

Omega Chapter

The memory of brothers who enter Omega Chapter may be honored by contributions to the Alpha Sigma Phi Memorial Fund... gifts that live on by underwriting the scholarship and educational programs of Alpha Sigma Phi.

Leon Arbuckle, Illinois '13, Marshall, Il.; S. Edwin Bacon, Alabama '31, S. Yarmouth, Ma.; Howard E. Beebout, Marietta '21, Lima, Oh.; Luther Buckner, Hartwick '49, Amsterdam, N.Y.; Gustaf A. Danielson, Penn State '18, Erie, Pa.; John N. Fox, Oklahoma '52, Arlington, Tx.; Robert R. Frost, Colorado '26, Lakewood, Co.; Leland B. Groezinger, California '42, San Francisco, Ca.; Guy L. Hayman, Cornell '10, Northbrook, Pa.; Ralph E. Hirsh, Yale '24, Cleveland Hts., Oh.; Zell F. Mabee, Colorado '22, Healdsburg, Ca.; Howard P. Meister, Marietta '13, Cleveland, Oh.; Peter M. Schroeder, Minnesota '29, Detroit Lakes, Mn.; Robert L. Shoecraft, Sr., Illinois '24, Moline, Il.; Robert J. Smith, Wayne '55, Pleasantville, N.Y.; Robert H. Trenkamp, Yale '31, Cleveland Hts., Oh.; George S. Veazie, Cornell '11, Elmira, N.Y.; Arthur G. Vieth, Missouri Valley '45, Chattanooga, Tn.; James R. Warren, Jr., West Virginia '50, Glasgow, Va.; Hursel A. Wilkinson, Oklahoma '24, Beaumont, Tx.; Claude F. Williams, Cornell '12, Sun City, Az.