

Summer 1978

Just ask Dr. Frank Krebs, Mount Union '29, our Grand Historian.

One of the remarkable things about remarkable Alpha Sigma Phi is its uncanny ability to continually find new life, a new spark, new purpose. It is one reason for our considerable age.

The phoenix, the mythical bird reborn of its own ashes, is appropriate on the crest of our coat of arms.

In the past, the phoenix took flight most often in the form of remarkable individuals or circumstances. The ability of Delta Beta Xi to keep the traditions of the "Old Gal" alive at Yale. The effort of loyal alumni who did the same when Delta dwindled to no members at all. The remarkable second founding and subsequent growth led by Edwin M. Waterbury and Wayne Montgomery Musgrave.

Individuals like Ralph F. Burns with a 40-year stewardship. And Wilbur H. Cramblet who as Grand Senior President served longer than any man and led the Fraternity through a war and mergers.

Plus many, many more.

Once again the phoenix is taking flight.

And this time it is equally remarkable. For it is a concerted effort of members—undergraduate and alumnus alike—that is sending the old bird soaring.

That teamwork across the country is producing some encouraging results.

For the first time in almost a decade, Alpha Sigma Phi has been operating in the black financially and can start returning to its reserves money that had to be borrowed to cover deficit years.

With a strong effort by undergraduates, backed by loyal alumni, Chapters are rebounding and growing and improving. A year ago, Alpha Sigma Phi enumerated standards of operation for its Chapters. More and more Chapters are not only meeting those minimum standards, but have set for themselves the challenge to exceed them. (That is not to say that we are without some anemic Chapters. Efforts continue to strengthen and rebuild where needed.)

Matching the development within Chapters has been the development of new services and better serving by National Headquarters. Membership lists are now computerized. A newsletter service is being offered. Fees and financial matters are being handled in a more business-like manner. Historical archives have been improved.

On the inside

Alpha Sigma Phi gets a new Executive Director as Gary Anderson moves on. **Page 2.**

Chapters report on their activities over the past year. Be sure and read each one, starting on **Page 3.**

Alumni contributions make the operation of Alpha Sigma Phi possible. The Fraternity salutes those who share. **Page 9.**

"Alpha Sigs in Action"—our section on alumni news and happenings returns next issue. Now is a good time to send in **your** news. Send a photo as well.



New programs have evolved. A career development and guidance program, A new scholarship program is under consideration. Alumni support programs are now in place and being improved.

A National Province Program Coordinator—Kevin J. Garvey, Westminster '75, has been appointed and a revitalization of province work is anticipated.

Perhaps one of the most dramatic indications that the phoenix is taking flight is Alpha Sigma Phi's expansion efforts. The program is under the direction of Peter L. Tourtellot, American '57, a Greensboro, N.C. business executive.

Now on staff is the position of expansion consultant—a fulltime employee with the responsibility of seeking growth opportunities for the Fraternity and helping make those opportunities realities.

In the past year a new Chapter—Beta Zeta at North Carolina State University—was chartered. A colony at the University of North Carolina at Charlotte has official recognition.

Surveys are underway of campuses where there is a growing fraternity system. There seems to be considerable interest in having a responsible fraternity with quality pro-

gramming like Alpha Sigma Phi come onto many campuses.

Interest groups have been formed at Radford (Va.) College, East Carolina University (N.C.) and work is underway at the University of North Carolina at Chapel Hill. As it is at the University of Delaware.

Local groups in Florida and Virginia have expressed interest in Alpha Sigma Phi.

Work has been going on in contacting colleges and universities where the "Old Gal" has dormant Chapters in the hopes of reactivation. Several have given positive reactions. There are also campuses where fraternities have been banned that are changing their policies, giving Alpha Sigma Phi additional opportunities.

Expansion requires the backup of alumni as advisors and in other roles. If you're interested in helping, let Headquarters know. So the phoenix is taking flight.

But we cannot rest on laurels. There is much yet to be done. And there is always a drive to improve what is existing.

It is a time for every member of Alpha Sigma Phi to take pride in the recent accomplishments of the Fraternity. And then translate that pride into action to help her soar even further.



Your check to the Ralph F. Burns Foundation, part of the Memorial Fund, helps underwrite the educational work of Alpha Sigma Phi. And it honors "Mr. Alpha Sig", the brother who spent 40 years building the Fraternity's remarkable reputation. If your life was touched by the dean of the fraternity world as was thousands of lives, you'll want to take part. Our Executive Secretary Emeritus, by the way, still finds time to help the "Old Gal" and is a sought-after speaker.

Kevin Garvey named new Executive as Gary Anderson departs Alpha Sig staff

This October Alpha Sigma Phi gets its eighth executive.

Kevin Garvey, Westminster '75, takes the reins at the Fraternity's Delaware, Ohio executive office then.

Gary Anderson, Westminster '71, will be leaving the staff after more than four years. He'll be pursuing interests in the private sector.

Garvey, a native of Victor, New York, served Alpha Sigma Phi as a Chapter Consultant, visiting and working with almost every undergraduate Chapter. The tall blond was outstandingly successful in his work with undergraduates and alumni alike.

At Alpha Nu Chapter, Garvey held several offices including HSP. He was involved in many campus activities and gained recognition as an outstanding swimmer.

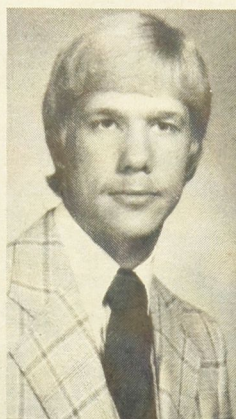
Anderson will remain on the staff for a period to assist in training the new executive and planning for a smooth transition.

Gary Anderson joined the Fraternity staff as a Chapter Consultant and traveled throughout the country for Alpha Sigma Phi for two years. He was promoted to the post of executive director on the retirement of Ralph Burns.

He describes his time as executive director as one of reassessment and new beginnings:

"We've had to keep moving to maintain the goodwill Ralph Burns left in motion. At the same time we've been pinpointing those areas which need new effort: Chapter standards, expansion, tighter financial control and alumni involvement among them."

"Headquarters has been able to hold the line on expenses while increasing services. Our expansion program is showing progress."



**Kevin Garvey,
Westminster '75**



**Gary Anderson,
Westminster '71**

We're hopeful that Chapters will continue to increase membership," says Anderson.

"If there's one area particularly needing attention it is alumni involvement. We've faltered a bit in finding ways to allow for it and in recruiting support."

Anderson concludes: *"I'll be eternally grateful for this opportunity. The scope and depth of the work done have broadened my horizons far greater than any other experience I might have chosen. I'm pleased to have seen accomplished many immediate goals. I hope that Brothers everywhere will give Kevin the same fine support they have offered me."*

Garvey will be heading a staff at Headquarters that includes Marilyn Sipes, comptroller; Kathy Oja, administrative assistant; and Brenda Hopkins, records specialist. In addition there are two consultants traveling on behalf of the Fraternity.

Here's a wish list and you can help make wishes come true

Recycling is the "in" thing these days.

Alpha Sigma Phi wants to give you a chance at recycling and a way to help the "Old Gal" as well.

There are items needed at our National Headquarters that current budgets won't stretch to include. Perhaps you have some of these items around your home or office unused (or know where a great deal can be obtained).

Materials are needed for an on-going program to refurbish and make our headquarters building more functional. Here is the current "want list":

Collator (8 sheets or larger). Used but working electric typewriter (the standby is over 20 years old!). Book shelves of any kind. Drapes. Sofa.

Conference table and chairs. Secretarial chairs. Hot plate. Reception room chairs.

One dream is to turn a room in the building into a bunkhouse for traveling consultants. Field men are in and out of Delaware throughout the year but not enough to justify renting an apartment. Bunk beds, chest of drawers and a shower unit are needed to convert space for this purpose.

Perhaps you have on hand paint that could be used in the building maintenance program. Or carpet. Or shrubbery or ground cover for the exterior.

And maybe, just maybe, there's a member somewhere with an unused flagpole so the Fraternity's flag could wave proudly at Headquarters.

If you can provide any of these items or would like to underwrite one, please write to Alpha Sigma Phi, 24 West William Street, Delaware, Ohio 43015. All gifts will be properly recorded in the archives of the Fraternity.

THE TOMAHAWK

Vol. 76 No. 1
Summer 1978
Member, College Fraternity Editors Association.

Editorial Office
P.O. Box 4351
Charlotte, N. Carolina 28204

The *Tomahawk* is the oldest college fraternity publication. It first appeared in November 1847 at Yale College and continued until the college suspended it in 1852. Since its revival in April 1909, it has been published continuously.

Editor
Evin Varner

Business Manager
Gary A. Anderson

Editorial Assistant
Kathleen Oja

Art Director
Marty Washam

The *Tomahawk* is published quarterly by the Ellwood City Ledger, Ellwood City, Pa. U.S.A. for Alpha Sigma Phi Fraternity. Fifty cents a copy. Life subscription \$15.00. All remittances should be made payable to Alpha Sigma Phi Fraternity, 24 West William Street, Delaware, Ohio 43015. Second class postage paid at Delaware, Ohio, and at additional mailing offices.

Postmaster: Change of address form No. 3579 should be sent to Alpha Sigma Phi, 24 West William Street, Delaware, Ohio 43015.

Omega Chapter

The memory of brothers who enter Omega Chapter may be honored by contributions to the Alpha Sigma Phi Memorial Fund . . . gifts that live on by underwriting the scholarship and educational programs of Alpha Sigma Phi.

Merle Bartley, Cornell '26, South Dayton, NY; Robert E. Bloser, Ohio State '14, West Palm Beach, FL; Merritt R. Clifton, Lehigh '36, Cleveland Heights, OH; Arthur W. Consoer, University of Wisconsin '10, Park Ridge, IL; Jess M. Harris Jr., University of Oklahoma '30, Hamilton, TX. Bernard Huber Jr., Penn State '29, Glenshaw, PA; Glen Morris, Penn State '20, Merritt Island, FL; Edward W. Roessler, Dartmouth College '28, Chester, NJ; James M. Williams, Ohio Wesleyan '30, Worthington, OH. Wesley M. Hine, Stanford '21, Delta Beta Xi '41, Mission Viejo, CA. Hine served on the Grand Council from 1942 to 1950. He was also one of the first trustees of the Memorial Fund of Alpha Sigma Phi. E. L. Ludvigsen,

Minnesota '22, Nokomis, FL. A Life Trustee of the Memorial Fund of Alpha Sigma Phi. Austin T. Cushman, University of California '21, San Marino, CA. Cushman was formerly the Chairman of the Board, Sears, Roebuck & Company, Chicago. He received the Fraternity's Distinguished Merit Award, recognizing outstanding professional achievement, in 1960. He was a member of the Bay Area Alumni Council.

Correction: Lester D. Bartley, Michigan '34, was inadvertently included in last issue's Omega listings. Our sincere apologies.

Memorial Fund

Recent contributions to the Memorial Fund include these gifts: in memory of Philip L. Moore—T. P. Wadsworth. In memory of Wesley M. Hine—T. P. Wadsworth, A. Brodie Smith. In memory of Austin T. Cushman—Henry A. Dietz.

For the Chapters of the "Old Gal" it was a busy, varied year

Eta University of Illinois

What was the highlight of the past year?

Eta Chapter says it was homecoming:

A homecoming float to welcome back the alums was designed and long hours and late nights went into stuffing flowers for decorations. It paid off with the Sigs winning the coveted Chancellors' Award!

A buffet lunch allowed undergraduates and alumni to get together and talk. Then the game. And then a traditional homecoming dance. The best part was the number of alumni who returned "home" and shared their experiences with the undergraduate Chapter.

Iota Cornell University

Rockledge continues its upward climb with new membership growth and improved programs.

The undergraduate members and the alumni corporation both worked on new constitutions and bylaws this past year.

Rockledge itself has been getting a facelift and new signs as well. Brothers who stayed over the summer built a new barbecue pit in the back yard.

Iota's hockey team proved itself outstanding and soccer improved, thanks to the transfer of a Beta Psi brother.

Mixers with Cornell's sororities have spiced the social calendar in addition to some big semi-formals. Iota has also added community service projects to its program and has found them fun and worthwhile.

Omicron University of Pennsylvania

Thanks to outstanding support by Brother Nicolas Luzak, Omicron's alumni corporation has been reorganized and is active again.

With the guidance of alumni, the Chapter was able to sell its old house and repay a \$20,000 loan to the national organization.

Omicron was active in many service projects, including the Big Brother's program of Philadelphia.

This fall the Chapter plans on reopening its kitchen after a five-year "vacation". Omicron looks forward to the spirit of brotherhood that will result from the sharing of meals once again.

Theta University of Michigan

Theta will celebrate its 70th year at homecoming this fall. And it'll be celebrating recent growth. An all-out rush program has resulted in the Chapter doubling its membership.

Theta collected over 23,000 postage stamps for the Fraternity's service project through Headquarters and gained radio and newspaper coverage on its efforts.

Serenading sororities was re-instituted as was an exchange dinner with the Alpha Delta Pi's.

The Chapter hosted the Province V Conclave, published a newsletter almost monthly and welcomed 40 alumni brothers at homecoming. New on the scene was a

parent's weekend in the fall. And with a lot of detective work, more than three-fourths of the "lost" brothers were "found".

Theta is once again getting involved in campus Greek affairs. Bill Grisolia became the Fraternity Coordinating Council President; Eric Jacobson was associate editor of the campus Greek newspaper; brothers helped organize a dance marathon for the Diabetes Association. Pete Wiltse was the All-Greek Social Committee Chairman.

Tau Stanford University

Tau Chapter has been involved this past year in the University recycling program, collecting cans, bottles and paper.

"Tau Talks", Chapter newsletter, has been revived after an absence of some years. Over 40 alumni attended the annual Chapter-alumni brunch in the fall.

The annual skiing trip to Lake Tahoe continued to be a highlight of the year.

Tau continues to make many improvements on its house. Recently acquired is a universal weight machine. And just installed is a photography darkroom. The Chapter's game room also saw improvements during the year.

Upsilon Penn State

With almost 60 members, Upsilon is a far cry from its two members only a few years ago. The change is in attitude stated by the Chapter: *"The brotherhood that rushes together, stays together."*

Rush activities include dinners, picnics, informal get-togethers and pizza nights.

The Upsilon pledge program now stresses more interaction with the brotherhood and has as its goal total Chapter unity. The emphasis is on education and preparation for leadership. Pledges still "bolt", especially for trip to Iota at Cornell and Beta Epsilon at Lehigh.

Upsilon is involved in almost every interfraternity function at Penn State. The Chapter has been building floats for parades, making booths for carnivals, entering chariot races, helping other Greeks with philanthropic projects. The result is a better-known Alpha Sigma Phi and valuable rush exposure and fun as well.

Academic ratings are improving with the enforcement of weeknight quiet hours, awards for house scholar, pledge scholar and a new library in the attic.

Of 50 fraternities on campus, Upsilon ranked 7th in intramurals.

With the help of alumni plus a \$10 per brother per term "special projects fund", the party room has gotten a new tile floor, new lighting and re-upholstered furniture.

In addition, the brotherhood has taken over many duties previously paid for and turned the money over to the fund. Those duties include dishwashing and laundering. Pledge classes also help with projects including



John Barker, Beta Mu, Wake Forest University gives a demonstration of that good old Alpha Sig spirit as he cheers on the Wake Forest Deacons at a football game. Alpha Sigs reserve a section of seats for the Chapter.

interior and exterior painting.

In the works is a "History of Upsilon" to supplement "To Better the Man". The Chapter is contacting alumni for information, from its founding in 1918 to its "second founding" in 1972.

Phi Iowa State

Alpha Sigma Phi made the national press and TV thanks to Phi's Cannon. Eight feet tall and weighing 300 pounds, the cannon is fired at all home football games when ISU makes a touchdown or field goal. Alpha Sigs make up the crew and even load the shells.

When Iowa played in the Peach Bowl in Atlanta, Phi decided the Cannonball Express had to roll. And 14 hours later, the Cannon arrived in Atlanta. It attracted a lot of press attention as well as that of the crowd.

The Alpha Sigs making the trip got to tour Atlanta, meet brothers from N. C. State (the opponents in the game which N. C. State won 24-14) and from Wake Forest.

(continued next page)



Theta Brothers at Michigan carefully work on a sign to encourage the football team. Another sign on the campus last year declared that Alpha Sigma Phi is "scholarship and more".

Chapter reports

Phi has been enjoying the expanded and renovated house, which was particularly shown off at Founder's Day. Phi brother Stan Thurston was awarded the coveted Delta Beta Xi award at that time.

During the year the Chapter initiated its faculty advisor, Herman Christian Eichmeir. He had been outstanding in his support of Phi so the brothers decided to make him a brother as well!

Psi

Oregon State

Psi men manned telephones for 20 hours of a telethon that raised funds for the Easter Seal Society. The Chapter's street dance attracted 2000 people. Psi held Halloween and Christmas parties for local children, sponsored a community car wash, and delivered food to shut-ins at the Good Samaritan Retirement Village.

The Brotherhood worked with the local park and recreation group in providing a wrestling program for area youngsters. House Mother Mrs. Margaret Sandoz helped to organize several fund raising projects for the Corvallis Senior Citizens Association.

Rush programs that are well-planned resulted in making Psi the third largest fraternity at Oregon State. Academics plays a vital role in Chapter life. Scholarship dinners are given by the Chapter each term for those men who earn at least a 3.0 grade point average or who have improved their grades by one-half quality point. For those not doing so well, there are mandatory study tables.

The Chapter, with over half the membership taking part, fielded teams in almost every available intramural sport. Psi made the playoffs in three sports.

The Chapter house had a facelift, thanks to Project '77 funds. Psi salutes Norm Burkes for doing most of the painting.

Mom's Day and Dad's Day were great successes. During Mom's Day the Chapter made it to the finals of the IFC all-University sing. The Talisman Rose Court—ten lovely ladies from various sororities—participated in many Chapter functions, gave wake-up breakfasts and helped Psi select and decorate its 27-foot-tall Christmas tree.

Social life for Psi included various joint functions with other Greeks on campus. Ice cream socials, barbecues, costume parties, disco dances and pizza-making parties were a few of the diverse events on the social calendar.

Plans include the continued active support of service projects. A new pledge requirement is for each member to take part in at least one other campus activity. Planned are continued social events with other Greeks and more events with alumni.

Alpha Nu

Westminster

Sig Olympics, the second annual Eatin' for Epilepsy, expansion of the eating club, plus house improvements kept Alpha Nu busy. Work on improving the Chapter's traditional high academic rating was also done.

Alpha Sigs took first place in the annual Pan-Hel/IFC Blood Drive that insured

coverage for the students, faculty and administration for a year. Sigma Sweethearts have continued to grow and now sport their own t-shirts. The Sweethearts helped with social events, landscaped the front of the house and undertook a community service project.

A new stove hood and fire extinguishing equipment was added, thanks to alumni help and with a loan from the national organization.

To raise funds the Chapter has undertaken doughnut sales, M&M sales and a light bulb sale.

Alpha Xi

Illinois Institute of Technology

Alpha Xi played a major role in the IIT-Cancer Society Dance Marathon at the Playboy Towers Hotel in Chicago. Fifty-seven couples from area colleges and high schools as well as IIT took part.

Brother Bev Dudley and his sister were one of 14 couples who finished the 50-hour ordeal.

Brother Randy Doliber was chairman of Ballroom & Staff. The Alpha Sigs handled finances for the event. Brothers and Little Sisters provided the needed manpower. Brother Doliber did such an outstanding job that the Union Board selected him to chair the entire event next year.

Alpha Sigs were active in IFC events this year and have played a strong role in building the IIT fraternity system.

Some new ideas were tried for the social program. One was a disco complete with lights, sound system and disc jockey. Another was a tri-house party between the Sigs, Deltas and Sig Eps. And the Little Sisters provided a barbeque that everyone enjoyed.

Alpha Pi

Purdue

Alpha Pi started the year by hosting the National Educational Conference. And the year kept hopping from there.

The Alpha Sigs and the Chi O's took first place in the University Sing, the first time in 13 years that Alpha Pi has entered. It took a lot of work but it was a lot of fun. Especially the first annual Alpha Sig Gong Show, starring the Alpha Sigs, Chi O's and parents, that comprised the victory celebration.

Alpha Pi's usual fine intramural program kept the house busy along with an entry in the Little 500 go kart competition.

On the social scene, there was a new touch—the first Alpha Sig Ski Weekend. And with the campus snowed out, Alpha Pi's basement became non-stop party headquarters for all nearby Greeks.

Outstanding this year was Alpha Pi's service projects. With the Alpha Chi's, the Chapter visited the Home Hospital before Halloween and gave out costumes to the kids. On Halloween, with the Little Sisters, the Chapter entertained children from Lafayette. And then went trick or treating for UNICEF. In December, the Chapter sold cards for UNICEF with the Gamma Phi Betas at the Lafayette post office. There was also a Christmas party for children in the area. And later a clothing and toy drive on behalf of the Red Cross.

What do you think? Alpha Sigma Phi occasionally is asked about expanding its insurance program currently offered to members. There are other opportunities for providing services to members, ranging from travel to special discount purchases. What services would you like to see Alpha Sigma Phi offering its members? Share your thoughts with Headquarters, 24 West William Street, Delaware, Ohio 43015.

Alpha Tau

Stevens Tech

Strong on the comeback trail, Alpha Tau has 16 brothers living in the house. The house itself has seen improvements inside and out.

In intramurals, the Chapter has gone from being a non-competitor to a 4th place IFC standing. The annual IFC Christmas Display Award was captured once again by the Alpha Sigs.

Social events and outings are more frequent and an on-going rush program is adding outstanding new men to the Chapter. John Lidstrom, Alpha Tau alumnus, was awarded the coveted Delta Beta Xi award. And Alpha Tau once again is at the top of academic standings at Stevens.

Plans are underway to keep the new growth going—with a special salute to the hard-working alumni who pulled Alpha Tau through hard times.

Alpha Chi

Coe College

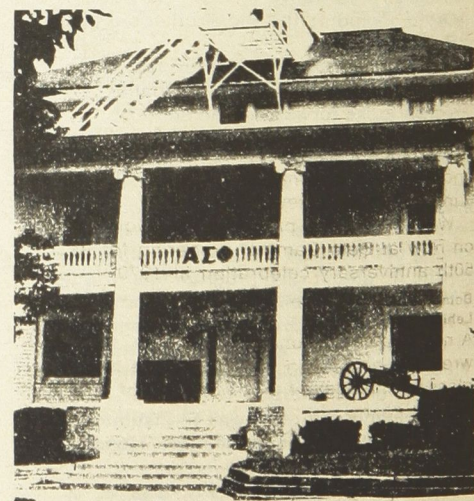
Alpha Chi has been charting new growth and new members are quickly taking active roles in helping make the Chapter better.

Social events during the year included a homecoming dance, a pledge dance and a formal dinner. The Alpha Sigs also held parties with the Chi Omegas and one with the Tri-Deltas. (At that one, the girls showed up wearing togas!)

The annual Flunk Day party was held at Pennican Ridge State Park with beautiful weather, softball, frisbee and food.

Alpha Chi took part in the Friends Olympics sponsored by the area volunteer bureau. Then they put on their own Sig Olympics, which pitted three sorority teams and one team of independent women.

Most Coe students are on a 20 meal a week food plan which makes for hunger pangs on Sundays. Every Sunday one of the Brothers cooks Sunday dinner. It's fun, filling and has been a great time to rush as well.



What's big and white and proud? Why the newly expanded and renovated home of Phi Chapter at Iowa State. The "new" home is a delight after months of living on top of each other, report Phi members.

Don't let us lose you. We need your address corrections. And those of other members as well. Headquarters has a free kit on how you can help in "stalking" lost brothers. Parents and families of Brothers can help by sending address corrections as well. Please help.



"Brotherhood is sharing" say these men from Beta Psi, RPI. And sharing also means taking part in campus activities, such as a special Greek Chariot Race. Beta Psi's hockey teams are always outstanding and this year was no different.

Alpha Psi Presbyterian

It was quite a year for Alpha Psi. A pledge class that almost doubled the size of the Chapter started the year off.

It was Alpha Psi's Golden Anniversaries year and an entire weekend was set aside for celebrating. The Little Sisters presented a special gong show that kicked off the weekend.

A banquet noted the birthday with the president of the college greeting the guests. A highlight was the appearance of charter member and founder David Blankenship. Executive Director Gary Anderson was a speaker as was Evin Varner, Alpha Psi alumnus and the Fraternity's Director of Publications. After the banquet, everyone returned to the house for a disco party that went on and on.

The annual Black and White was a highlight of the year as well, with members journeying to the Waynesville Country Club in the mountains for a weekend of fun and brotherhood.

Beta Gamma Bethany College

"The surprising Alpha Sigs"—that's what they're calling us at Bethany.

It started with the Chapter's first entry in years in the homecoming float competition—a winner. And that was followed by outstanding results on the intramural fields. Then it was backed by an outstanding pledge class.

And alumni of Beta Gamma were surprised and pleased with the first issue of "The Black Lantern" in some seven years.

Which is a good prelude to the work going on now at Beta Gamma, preparing for its 50th anniversary celebration in 1979.

Beta Epsilon Lehigh

A national championship in football, top ten in wrestling and being snowed in and having classes cancelled were highlights of the Lehigh year.

Beta Epsilon took part in those activities including skiing on the hill that is the Lehigh campus.

The Chapter balanced its budget. A new lawn was planted and the sophomores used their pledge project to make landscaping improvements on the front bank.



Coming up is a new living room and repainting the hallways throughout the house.

Grades climbed at the Chapter as Beta Epsilon went back into the top ten fraternities. Partying didn't get forgotten with the Chapter hosting sororities from West Chester State College. In intramurals, the Chapter rose to 11th among 33 fraternities. Soccer became a Chapter sport and pledges with foreign backgrounds promise to keep it popular. Volleyball, bowling, softball, badminton, wrestling and boxing are all sports where brothers and pledges excelled.

The Beta Epsilon Bulletin for alumni was introduced to supplement The Bull's Eye. Alumni responded by providing a new fire alarm system. A five-year furniture plan has also been created to keep Beta Epsilon on top!

Beta Zeta North Carolina State

For most Chapters, it happens only once. But occasionally it happens twice. And the second time is twice as nice! Beta Zeta Colony officially became Beta Zeta Chapter of Alpha Sigma Phi on February 18. (Alpha Kappa Pi had granted a charter at N. C. State but the Chapter became inactive during World War II.)

Grand Senior President George Lord was on hand as was Executive Director Gary Anderson and Director of Expansion Peter Tourtellot. Plus other distinguished alumni.

Wake Forest brothers initiated the new members in the culmination of three years of hard work.

Eight men from Beta Zeta attended the 1977 Educational Conference—the largest delegation there. Their enthusiasm helped produce a large fall pledge class. Beta Zeta placed third among all fraternities academically with the pledge class taking second place. Beta Zeta held its first Carolina Car Bash prior to the N. C. State-UNC football game. With the help of the Chapter's Little Sisters the first annual Christmas party was a great success.

Through the aid of NCSU Greek Affairs advisor Herb Council, Beta Zeta has moved into a new house located across the street from the campus. Great things are planned for its first full year as a Chapter.

Beta Mu Wake Forest University

It was jubilation time at Beta Mu when the Chapter made history by winning Greek Week. Nine events from tug-o-wars to a sing to a blood drive went into the win.

The annual Talisman ball saw 120 people having a great time. Each date received a rose and seniors were recognized with white carnations.

A fine fall pledge class was followed by a 19-man spring semester class. A Black Lantern procession went for the new men at initiation. The year saw Beta Mu capturing the first place academic rating at Wake Forest. The Beta Mu Alumni Association was formed and has already been very supportive of the Chapter.

Homecoming started off with a party at the home of GCA Doug Pungner and his wife. There was a pre-game luncheon and an after-game dance. There was a mountain weekend. And a beach weekend. Pledges earned money at a local department store, thanks to an alumnus' help, and used the money to build a trophy cabinet.

Brothers and Little Sisters visited the local nursing home for Christmas caroling and took part in several canned goods drives for the needy.

Beta Mu's Chapter room has a new look. With the help of a loan from the national organization, new carpet and furniture is in place. And everyone pitched in for a paint-up, clean-up that left the place sparkling.

Beta Xi Hartwick College

Two welcome changes at Beta Xi this year were the Interfraternity Scholarship award and the Interfraternity Intramural Sports cup, won in competition with all other fraternities on campus.

There were changes in Chapter operations, too. All committee heads now report to the Prudential Committee before each meeting. All new business is discussed before the Chapter meetings. The Alumni Committee is now issuing the newsletter three times a year. A budget committee is now regulating expenses efficiently. Beta Xi's scrapbook has been revived. And so has the tradition of wearing black robes during the silent

(continued next page)

Chapter reports

procession marking the start of Pinnacle Week.

The brotherhood of Beta Xi thanks former Chapter Consultant Kevin Garvey for helping them revamp their rush program. After Spring rush, Beta Xi initiated nine men—more than all of the other fraternities at Hartwick combined.

Beta Xi has been active in helping the local Boys Club and held sledding parties for the youngsters in December and February.

Beta Chi American University

With a tremendous revitalization program, Beta Chi has doubled its size and promises to do the same again this year.

Signaling its intent on being a major force on the American campus, the Chapter held a Black Lantern Procession that had everyone talking!

During the year the Chapter had a chance to visit with Brother Vincent Price when he appeared at Ford's Theatre in "Diversions and Delights".

Being in Washington makes for interesting Chapter life. Especially when many members, political science major particularly, are working part-time in the government. Brothers this year worked in the National Archives, the Treasury Department, Department of Agriculture, the CIA, and the Office of the Vice President.

Beta Psi Rensselaer Polytechnic Institute

Two significant changes occurred this year. Membership has increased and the Chapter reports the largest number of live-in brothers in its history. The year also brought the formation of a Little Sister program, beginning with ladies from RPI and nearby Russel Sage College.

The men of Beta Psi were active in promoting their public image. They participated in Troy Work Day and held a block party that over 100 neighbors attended. The annual open house was a great success, too.

Joint undergraduate-alumni events like softball and hockey games made for fun and brotherhood. Alumni also made it possible for the Chapter to purchase a new color TV to replace one stolen last summer.

Social events included a weekend party at Iota Chapter, Cornell, a parent's weekend, a Halloween party, Christmas party and the annual formal dinner.

Sports took its share of attention. Beta Psi fielded teams in ice hockey, football, softball, tennis, soccer, table tennis, billiards, bowling, gym hockey, handball, volleyball, track and field plus swimming. The Chapter's soccer team returned as league champion after last year's perfect record.

Beta Psi's housing committee has been reactivated and is at work searching for a new lodge. Over \$17,000 has been contributed in the hopes that a suitable house can be found.

Gamma Alpha Ohio Northern

With a lot of hard work, the brotherhood has finally been able to celebrate the paying off of the original mortgage. The challenge now is to keep the budget balanced.

To celebrate being out of debt, Gamma Alpha went to work removing old paint in the living room giving it a bright new look. The Spring pledge class repainted the party room in Sig colors and did a super job. And in appreciation for her outstanding service to the Chapter over the years, the brotherhood repainted the housemother's apartment.

The sports program continued to show the Alpha Sigs are the greatest. And the social program was full—from homecoming to a big Christmas party with band. Winter Formal was snowed out but Gamma Alpha made up for it with a great Spring Formal at Wickers Hotel on Indian Lake.

Gamma Delta Davis & Elkins

The pledge class report at Gamma Delta says it all:

"We did well to pledge Alpha Sigma Phi. It was amazing to find people who were so diverse and yet added up to such a cohesive group. When we joined we knew they wanted us to be their brothers."

"Friendship is the key in brotherhood. As pledges we are helping our friends rebuild Alpha Sigma Phi at Davis & Elkins."

"We have paneled our lounge and our HSP was the hardest worker of all. We've also painted the hallway. The place is definitely shaping up."

"Membership is growing. And we are becoming a driving force on the campus. We are proud to be able to contribute to that."

Gamma Zeta Bowling Green State

For the first time in years, Gamma Zeta's "Black Lantern" newsletter was again in print.

The Chapter was active in Greek Week (taking a second place trophy), the annual push cart race, provided the University's mascot, Freddie Falcon in the person of David Zimmerman and cheered Greg Group who rode his bike 100 miles in two separate charity events.

Parent's Day saw about 60 attending for a casino party and buffet supper. The Chapter provided cash awards for scholarship, introduced a 24-hour kitchen, a communications seminar and a new pledge education program.

Gamma Zeta won a plaque for giving the greatest percentage of blood to the Red Cross of any campus group. It sponsored a Christmas party for the aged and the Little Sisters held a party for local orphans. Plans are underway to hold a 24-hour charity ice skating marathon with Alpha Chi Omega sorority.

Gamma Xi Widener College

Eight Alpha Sigs helped take Widener's basketball team to the NCAA Division III Championship finals—that was a highlight for Gamma Xi.

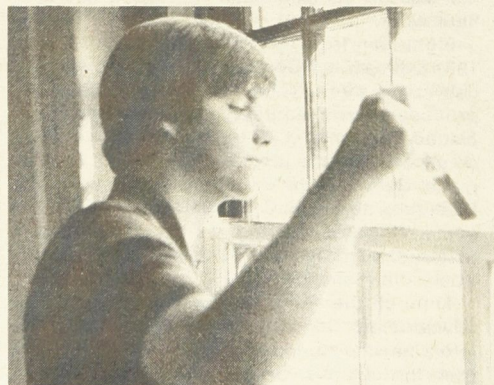
A low point was a fire—later shown to be arson—that required the Chapter to seek temporary housing for some weeks. Thanks to preplanned fire drills, no one was hurt.

In community service, the Chapter was recognized for its work with a retarded citizen's Boy Scout troop. The Chapter also transported Hispanic kids to the college for language classes. The courses were held at night and without the help of the Sigs, the young people would not have been able to take part. The Chapter plans on donating trees to the college for a small park on an open part of the campus.

Gamma Xi has established a housing fund that is in need of alumni support. Funds have been raised by raffles and by pin ball machines, with the Chapter keeping half the profits.



Theta Chapter members and staffers of the Michigan IFC newspaper gather in Theta's basement to work on an issue and have a bit of fun as well.



Beta Mu Chapter, Wake Forest University, spruced up its lodge rooms and everyone pitched in to lend a hand. Brother Clarke learns a new skill as a painter of trim.



At the North Carolina State Chartering banquet this spring, someone demonstrated the famed Theta Pie Flip. The new Beta Zeta Chapter renamed it the Beta Zeta Theta Pie Flip and several tried their hands at the feat.

Gamma Upsilon Eastern Michigan

A 30th anniversary celebration and a new house, all in one year!

The handsome new home for Gamma Upsilon is at 207 Summit North, Ypsilanti.

The 30th birthday was held in McKenny Hall at EMU. Special guests were Stuart W. Anderson, GCA, Grand Province Chief Arthur W. Cox and Executive Director Gary A. Anderson. The alumni association presented the Chapter with a handsome plaque to mark the event.

Gamma Upsilon has started its first Little Sisters program. And the Chapter's pledges undertook a canned goods drive for the needy.

Gamma Phi Concord College

Highlighting the year was the terrific growth and active support of the Chapter's Little Sisters.

The fall rush program resulted in 21 new pledges. Fall also brought a great homecoming and Founder's Day dances plus joint parties with the Alpha Taus and the Sigmas.

Spring found the brotherhood working extra hard to make the Black and White formal the most successful ever. The Chapter was honored by a visit from Grand Senior President George Lord at the dance.

The Alpha Sigs helped out with the March of Dimes telerama. New GCA for the Chapter is Don Jenkinson.

Gamma Phi plans on repeating it all plus more this coming year. The Chapter issues a special invitation to its alumni to increase their attendance at Chapter functions.

Gamma Chi Indiana University

A big new house and a big 10th anniversary celebration. That sums up the year. The anniversary brought back alumni for a great weekend. Toastmaster was past Grand Senior President George Trubow and speaker was Executive Secretary Emeritus Ralph Burns. Maxine Henson, cook for 10 years, was honored for her service and friendship.

Every Gamma Chi brother makes a commitment to rush that means making friends with prospective members. That approach produced a Fall class of 24 men



Community service projects can have their ups and downs. That's what the brothers at Delta Epsilon, Rio Grande, found out when they saw-sawed for 100 hours for charity. The event not only helped local

causes, it drew attention of radio, TV and newspapers plus a lot of parents attending Rio Grande's parent's weekend.

and a special spring rush program has already netted 28 men for this Fall.

Gamma Chi placed seventh academically among all fraternities. Eight brothers were honored at a scholarship banquet for having a 3.5 GPA or better. Don Harris, Joe Adams and Tom Brown received special recognition for their perfect 4.0's!

Forty young women pledged the Chapter's Little Sisters program and then helped in fund raising projects, picnics, disco parties and other events.

Service projects included the annual Halloween party for the children of the Stonebelt Center in Bloomington. The Fall pledge class sponsored and rode in a bike-a-thon for the Cancer Society. The Spring pledge class assisted with a Red Cross blood drive.

Gamma Chi's entry in IU's Little 500 bicycle race placed 16 in a field of 33 in the 50-mile race. Special thanks goes to Dave Filbey who rode 111 of the 200 laps!

Gamma Psi Lawrence Institute of Technology

Gamma Psi has proudly moved into a new house. The alumni corporation and the undergraduates worked together to acquire the ranch style home close to the campus. It houses six brothers and the basement will function as a general assembly hall. Furnishings were obtained through donations by friends of the Chapter and through garage sales.

Fall rush was kicked off by the annual barn party and hay ride. Pledges then collected over \$150 in their Trick or Treat for UNICEF. In December the Chapter raised over \$500 by holding a raffle which included prizes such as a color TV, a CB radio and an airplane ride.

Gamma Psi took part in the Walk-a-thon for muscular dystrophy. Each man participating raised at least \$50. Summer plans included a golf outing, a pool party and a baseball game on the huge lot of the new house.



A portion of the alumni who returned to visit Delta Delta Chapter, Slippery Rock for their annual dinner.

Plus Gamma Psi is participating in a continuous-ecosystem-balancing-recycling-effort. In other words, a daily paper drive!

Delta Delta Slippery Rock State

Unity—that's the word for Delta Delta.

And it is showing up in new growth, improved programs and outstanding achievements.

During the year the Chapter won the blood bank competition with 81% of the members contributing—triple that of any other group.

Alpha Sigma Phi won the homecoming float competition and followed that with a party for alumni. And a room in the Jaycee Haunted House decorated by Delta Delta took third place.

Other highlights of the year include an improved Little Sisters program; an outstanding basketball team and collecting money for the children's hospital.



Fraternity life sometimes means work as the pledges of Psi Chapter, Oregon State, discovered. As their special project, they decided to relandscape the Chapter house.

(continued next page)

Chapter reports



It's a tradition at Beta Gamma Chapter, Bethany—when you get engaged or pinned, you get a dunking. It's the



"Duck Pond Ritual" as an unwilling brother heads toward the pond near the Chapter. This generally is after a chase. The victim discovers a new style of diving.



And then emerges cold and wet but knowing a party awaits in his honor after he's dry again.

Delta Epsilon Rio Grande College

Brothers at Delta Epsilon know something about ups and downs. They started the year with a fund-raising project—100 hours on a giant see-saw.

\$1000 was raised for the March of Dimes and other charities through pledges and money thrown into barrels to keep the Alpha Sigs teetering. Newspapers, radio and TV covered the event that ended midway of Rio Grande's parent's weekend.

To earn money for the Chapter, the undergraduates and alumni teamed up to handle parking at a local festival and pulled in \$1,200!

Delta Epsilon is growing with ever bigger pledge classes. And this year added an interesting touch—repledge day. On that day brothers reverted to being pledges, wore coat, tie and pin and everyone attended breakfast together. The pledge class painted the interior of a center for the visually handicapped and found a much-needed piano for the center as well.

New to the Chapter was a Black Lantern procession at the time its pledges were inducted. Materials for the procession were borrowed from Delta Chapter, Marietta. Plans are underway to repeat the event.

Delta Kappa Colony

University of North Carolina at Charlotte

It's a slow climb up the ladder of success, but Delta Kappa has the spirit. Pledging has been up as has programming and activities.

The men of Delta Kappa are becoming more active in campus events. A float was entered in the annual homecoming celebration and a queen nominated. The Colony entered the campus "Pose with a Strohs" contest and won two free kegs of beer.

At exam time special "survival kits" (a bag with apples, candy and other goodies) were distributed to sorority members on campus.

New rush programs, scholarship programs and an excellent newsletter edited by Don Goforth have been effective additions. The men of Delta Kappa have set this year to be the year for achieving Chapter status in Alpha Sigma Phi.



Intramurals are an important part of every Chapter's year. Increasingly there are "new" sports in traditional programs, as here with Psi Chapter's Rich Price heading for a goal in soccer.



Winter comes to Rockledge, Iota Chapter, Cornell. And guess what they were planning at the same time? A Dixieland party. It didn't cool off the party, however!



Is that a fiddler on the roof? Brothers of Gamma Psi Chapter, Lawrence Institute of Technology proudly

show off their new home at 25131 Circle Drive, Southfield, Michigan.

Get the "was" out!

Fraternity membership is for life. So we all need to make sure that we don't fall into the pattern of saying, "I was an Alpha Sig." It's present tense: "I am an Alpha Sig."

In fact, have a bit of fun with it. When someone comments that "I was a Beta Beta Beta," speak up and say, "That's interesting because I am an Alpha Sig."

Still am!"

And another thought. Include your membership in Alpha Sigma Phi on your biographical data sheets in prominent position. You'll be surprised how often a mention of your Fraternity will appear in print. And that might bring you in contact with another brother. Or a young man who has questions about possible membership.

Alpha Sigma Phi salutes loyal brothers for their support

Alpha Sigma Phi deals in intangibles. Intangibles that have proven worthwhile and needed for over 130 years.

But in perpetuating those intangibles, that very tangible thing called money is very necessary.

Alumni brothers made contributions this past year that represented 24.5% of the total budgeted income for the programs and operation of the Fraternity. Obviously those gifts are vital to the welfare of Alpha Sigma Phi. It is with special pride and gratitude that the Fraternity lists here those who have made Alpha Sigma Phi a part of their giving program.

This year a new recognition program begins.

Those giving up to \$15 are listed as Honor Roll members. Contributions between \$15 and \$100 earn the designation of Pinnacle Club.

There are special listings of CLVEN Club members (up to \$250); and the Talisman Club (up to \$500). Gifts up to \$1000 brings membership in the Cardinal & Stone Club. Contributions of \$1000 or more earn membership in the Founders' Club.

These club memberships are awarded each fiscal year ending June 30.

Beginning in 1979 Alpha Sigma Phi will start a recognition program for those Brothers reaching milestones in their cumulative giving to the Fraternity.

The donor list in this issue recognizes those who have made contributions to the Loyalty Fund (the annual giving for general operations), to the Memorial Fund or the Ralph F. Burns Foundation (scholarships and educational activity) and to any other activity designated by the Brother making the gift.

The Fraternity is deeply appreciative of the Brothers who through their generosity means others will be able to enjoy the Fraternity experience which has meant so much to every member.

If you would like more information concerning the funds of the Fraternity, special bequests or giving programs, please write Headquarters for literature.

Four new Life Trustees have been recognized by the Memorial Fund. Life Trustees have contributed \$1000 or more to the Memorial Fund, either by single gift or cumulatively over a period of years.

Those added to the list are: **Dr. Elbridge "Jack" Best, California '13; Ralph A. McGoey, California '23; Charles W. Shaeffer, Pennsylvania State '30; and T. P. "Tux" Wadsworth, California '17.**

Existing Life Trustees include **Stuart W. Anderson, California '22; Howard E. Beebout, Augustine, Eastern Michigan '73; Waldemar R. Marietta '21; Paul J. Cupp, Pennsylvania '21 and Dallas L. Donnan, Illinois '21.**

Also **James V. Fitzpatrick, Illinois Institute of Technology '47; Raymond E. Glos, Illinois '22; Ralph S. Hudson, Yale '15; J. B. Hurd, Stanford '21; E. L. Ludvigsen, Minnesota '22;**

Floyd W. Mosiman, Stanford '17; Harold C. Mueller, Illinois Institute of Technology '39; Steven S. Sanders, Michigan '23 and E. K. Sturgis, California '13.

This is the final list of Life Trustees to the Memorial Fund. Beginning next year, all contributions to any fund or activity of the Fraternity will be counted toward a Brother's cumulative giving. The new program will be more complete in recognizing the annual and cumulative contributions to all aspects of Alpha Sigma Phi.



ALPHA SIGMA PHI FRATERNITY

FOUNDERS' CLUB MEMBERS 1977-1978

ANDERSON, S.W.—EASTERN MICHIGAN UNIVERSITY '73
BEST, E.J.—UNIVERSITY OF CALIFORNIA '13
McGOEY, R.A.—UNIVERSITY OF CALIFORNIA '23
SHAEFFER, C.W.—PENN STATE UNIVERSITY '30
WADSWORTH, T.P.—UNIVERSITY OF CALIFORNIA '17

CARDINAL & STONE CLUB MEMBERS 1977-1978

FRANKS, M.E.—UNIVERSITY OF ILLINOIS '34

TALISMAN CLUB MEMBERS 1977-1978

KEGEL, W.C.—WESTMINSTER COLLEGE '48
TRUBOW, G.B.—UNIVERSITY OF MICHIGAN '53

CLVEN CLUB MEMBERS 1977-1978

BELL, S.W.—OHIO WESLEYAN UNIVERSITY '27
BLACK, L.R.—UNIVERSITY OF ILLINOIS '27
BLASI, M.G.—RUTGERS '65
BUNCH, R.G.—MARSHALL UNIVERSITY '33
COCHRAN, L.S.—UNIVERSITY OF PENNSYLVANIA '20
COFFEY, R.—UNIVERSITY OF CALIFORNIA '17

CURRY, T.G.—MISSOURI VALLEY '60
CUSHMAN, A.T.—UNIVERSITY OF CALIFORNIA '21
DROEGEMUELLER, A.C.—UNIVERSITY OF CHICAGO '39
EATON, W.K.—UNIVERSITY OF PENNSYLVANIA '19
FENCIL, L.R.—PENN STATE UNIVERSITY '30
FISHER, L.W.—CORNELL UNIVERSITY '15
FORWARD, C.B.—OHIO STATE UNIVERSITY '48
GREEN, M.J.—CONCORD COLLEGE '70
HAENN, W., JR.—UNIVERSITY OF PENNSYLVANIA '42
HARMS, H.H.—NORTHERN MICHIGAN UNIVERSITY '73
HEURICH, C., JR.—UNIVERSITY OF PENNSYLVANIA '20
HIBERLY, W.C.—UNIVERSITY OF WASHINGTON '18

HILSTROM, H.R.—IOWA STATE UNIVERSITY '31
HULTQUIST, L., JR.—UNIVERSITY OF ALABAMA '60
McGILLIVRAY, W.T.—UNIVERSITY OF MINNESOTA '26
MILLER, S.N.—PURDUE UNIVERSITY '64
MOSIMAN, F.W.—STANFORD UNIVERSITY '17
MUELLER, H.C.—ILLINOIS INSTITUTE OF TECHNOLOGY '39
PETERSON, O.S.—ILLINOIS INSTITUTE OF TECHNOLOGY '39
RANSOM, R.A.—CARNEGIE-MELLON UNIVERSITY '25
RICHARDSON, G.S.—UNIVERSITY OF COLORADO '17
ROBERTSON, O.L.—UNIVERSITY OF COLORADO '18
ROMIG, G.C.—PENN STATE UNIVERSITY '23
SCHULTZ, N., JR.—STANFORD UNIVERSITY '35
SENIOR, H.J.—UNIVERSITY OF MICHIGAN '20
VANDEMARK, C.W.—UNIVERSITY OF CINCINNATI '60
WAGNER, W.B.—WESTMINSTER COLLEGE '52
WOOD, I.C.—CARNEGIE-MELLON UNIVERSITY '25
WYCKOFF, J.W.V.—MARIETTA '16
YOUNG, B.F.—OHIO WESLEYAN '13
ZAMPARELLI, J.F.—TUFTS UNIVERSITY '47

PINNACLE CLUB MEMBERS 1977-1978

MEMBERS AT LARGE
Schwarz, C.B. '40
Clark, F.V. '44
Brown, G.C. '44
ALPHA
YALE
Norton, R.D. '17
Smith, D.G. '20
Chapman, C.S. '11
Scholten, R.A. '31
Thorpe, H.B. '21
Frost III, R. '40
Bass, G.E. '23
Beckwith, S.A. '15
Martin, C.G. '14
Sullivan, R.C. '35
Wittington, N.E. '26
Bulkley, G. '15
BETA
HARVARD
Gorriaran, M. '23
Farnham, A.S. '26
Allen, T.R. '17
GAMMA
UNIVERSITY OF MASSACHUSETTS
Kabat, J. '35
Ryan, E.P. '28
Brewster, D.T. '39
Shipman, L.C. '37
Babineau, R. '63
Blazon, G.M. '69
Harlow, N.L. '13
Crotty, P.A. '62
Seymour, D.E. '55
DELTA
MARIETTA COLLEGE
Midkiff, E. '70
Forrester, C.W. '66
Wartluft, D.L. '60
Broughton, C.L. '61
Arnold, B.F. '22
Freiberg, J.R. '57
Bergen, R.L. '34
Crone, P.C. '26
Patrick, G.A. '60
Schlicher, R.R. '34
Patton, W.F. '62
Thomas, N.A. '20
Robinson, C.G. '08
McConnell, J.R. '14
Miller, Wm. '07
Fogle, C.D.Jr. '36
Hickel, N.R. '30
Cubelli, G.E. '39
Merlin, D.G. '56
Smith, F.D.Jr. '48
Crawford, C.H. '29
Christy, N.R. '38
Broughton, R.D. '36
EPSILON
OHIO WESLEYAN UNIVERSITY
Ballard, F.C. '54
Blind, H.D. '52
Greene, M.F. '30
Crockett, D.B. '56
Peterson, W.D. '49
Thaler, D.M. '49
Kepner, H.M. '56
Smith, T.C. '49
Broberg, W.E. '47
Peterson, J.C. '58
Bailey, M.C. '37
Hughes, T.C. '56
Arai, H.Y. '54
Cole, E.B. '13
Hull, H.A. '39
Burns, R.F. '32
Beeghly, C.M. '27
Brown, W.M. '34
Merrill, J.B. '52
Reiter, D.K. '59
Sullivan, L.D. '49
Brandfass, E.A. '28
Mills, A.A.Jr. '37
Smyth, C.E. '50
Homans, R. '33
Long, D.R. '41
Lovell, E.M. '33
Betsch, W.D. '29
Ohi, J.P. '27
Pratt, S.F. '57
Naylor, C.I. '32
Otto, C.C. '53
Hadsell, N.W. '52
Elwood, W.K. '47
Ruopp, P.W. '24
Lovell, C.E. '27
Turner, F.W. '20

Honor roll

ZETA

OHIO STATE

UNIVERSITY

Dixon, F.W. '30
Herrington, J.D. '27
Briggs, G.F. '55
Strong, W.B. '42
Anderson, K.V. '70
Dutcher, C. '71
Grossman, R.A. '67
Igo, R.B. '64
McCartney, D.D. '53
Burns, W.B. '63
Bougher, E.L. '25
Swisher, M.H. '21
Bugbee, C.J. '19
Gierhart, G.R. '43
Jahn, A.C. '27
Ripple, H.L. '40
Clark, E.W. '30
Huber, C.C. '42
Armstrong, G.S. '43
Lape, D.K. '54
Aten, F.G. '40
Schuster, H.L.Jr. '45
Lathrop, G.L. '23
Roth, R.C. '58
McLean, C.R. '53
Mohr, P.D. '53
Gerlach, J.G. '43
Sims, J.M. '65
Pritchett, C.P. '29
Roehm, R.D. '17
Calaway, C.P. '19
Millay, G.F. '40
Herbert, P.M. '09
Taylor, I.B.Jr. '42

ETA

UNIVERSITY

OF ILLINOIS

Bartling, C.W. '30
Foster, J.C. '69
Hameetman, R.A. '71
Marchiando, P.J. '59
Newell, J.C. '49
Roegner, J.A. '58
Spiegler, R.W. '43
Wilton, P.L. '27
Lenzo, J. '65
Lehwald, J.Wm. '31
Fregeau, J.C. '67
Armstrong, H.C. '30
Klocek, G.W. '66
Larue, R.E.Jr. '26
Biro, N.G. '51
Johnson, J.E. '50
Lowe, G.K. '31
Sanders, P.T. '20
Christian, Wm.A. '28
Lanternman, R.B. '34
Manning, R.V. '25
Huppert, W.W. '49
Llewellyn, R. '19
Picard, J.L. '26
Stottlar, S.D. '47
Hartmann, C.P. '54
Cleworth, C.W. '14
Pierce, O.W. '25
Hendricks, R.C. '56
Sherman, W.S. '22
Garrett, F.J.Jr. '37
Nelson, G.M. '39
Putta, J.G. '39
Musser, C.R. '30
Foute, H.K. '38
Monsson, C.D. '38
Monsson, W.H. '19
Robnett, P.H. '48
Haines, R.W. '29
Glos, R.E. '22
Trutter, J.T. '39
Kelsey, R.J. '35
Pruett, C.E. '38
Selig, J.A. '31
Baldwin, D.M. '30
Colwell, R.F. '27
Snyder, D.A. '22
Glos, D.F. '21

THETA

UNIVERSITY

OF MICHIGAN

Brown, D.G. '65
Eades, C.C. '19
Fredrickson, J.H. '60
Hansen, D.C. '58
Ladd, J.W. '64
Markus, T.S. '67
Reisman, O.L. '49
Rockershousen, W.F. '56
Schwark, J.R. '65
Sutherland, C.M. '64
Wilt, T.R. '65
Raczkowski, R.T. '64
Danyko, D.D. '66
Dukarski, M.J. '73
Fuss, P.S. '54
Johnson, A.F. '48
Kaufman, D.H. '64
Park, R.W. '54
Carscallen, C.H. '57
Devine, W.D.Jr. '60
Puffer, J.W.III '61
Stoller, R.A. '28
Tessmer, R. '48

Zahnow, O.C. '37
Garner, J.E. '29
Campbell, J.A. '20
McGlaughlin, N.D. '31
Beckman, W.A. '54
Bohn, R.T.Jr. '43
Brandenstein, Z.G. '43
Murray, J.R. '40
Shoup, G.L.Jr. '47
Cova, J.C. '68
Sellers, C.W. '14
Wood, D.L. '58
Burrell, A.A. '13
Mason, W.G. '17
Mayers, S.T. '27
Coale, F.A. '59
Dunn, H.S. '49
Hammill, D. '29
Pomeroy, J.A. '26
Thompson, R.E. '64
Webber, C.E. '61
Conlon, T.L. '25
Heym, H.C. '17
Lauria, L. '62
Heston, W.M.Jr. '29
Pederson, E.A.Jr. '34
Shea, S.C. '30
Genebach, L.B. '17
Janes, R.J. '41
Jenkins, M.J. '65
Dunham, H.L. '17
Holzhauer, R.N. '40
Chapman, M.A. '33
Flora, W.R. '25
Ruhl, R.C. '60
Shenefield, J.W. '23
Grinnell, H.S. '25
Walbridge, W.E. '35
Engel, C.S. '30

IOTA

CORNELL

UNIVERSITY

Corsini, G.J. '73
Frediani, R.J. '72
Jasionis, J.E. '57
Smith, D.C. '27
Riddle, W.E. '61
Hamil, J.W. '53
Van Heiningen, J.J. '57
Gillespie, J.J. '32
Kelly, W.F. '42
Verbsky, J.D. '51
Ryberg, Ed. '64
Adelmann, H.R. '39
Hannan, W.P. '29
Toussaint, P.J. '66
Freeman, J.S. '66
Linsner, G.P. '55
Bastian, B.A. '28
Herbert, B.A. '58
Dunbar, R.A. '50
Mahl, Wm. '20
Whittaker, C.G. '20
Conger, G.B.III '56
Nolin, A.R. '20
Howard, C.R. '57
Sturtevant, J.F. '16
Herkner, G.W. '26
Engelhardt, C. '39
Uhrbrock, H.W. '20

KAPPA

UNIVERSITY

OF WISCONSIN

Kaiser, P. '31
Taube, K.D. '52
Forsgren, K.E. '36
McGurn, W.E. '28
Chase, L.P. '20
Sullivan, G.R. '29
Knoll, W.A. '11
Perrin, H.L. '18
Sisson, H.M. '24
Sullivan, J.F.Jr. '21
Stevens, C.E. '33
Fulfer, A.F. '41
Yegen, P.Jr. '17
Burke, K.R. '10
Anderson, P.A.C. '18
Kemp, F.F. '28

LAMBDA

COLUMBIA

UNIVERSITY

Palmer, H.W. '13
Hawkins, R.C. '16
Palmer, D.O. '26
Bliss, P. '21
Kidder, J.H. '19
Williams, W.J. '25
Biunno, V.P. '32
Poculuko, N. '49
Koenig, A.S.Jr. '32
Day, A. '20

MU

UNIVERSITY

OF WASHINGTON

Amundsen, C.L. '73
Banner, C.R. '72
Courtney, C.E. '18
Everett, L.H. '70
Hibbard, A.E. '28
Lund, E.G. '72
Martin, D.E. '52
Meredith, J.E. '54
Morrison, L.P. '71
Strugar, G.R. '35

Wallace, D.A. '49
Wold, L.M. '43
Gardner, O. '20
Moen, G.O.Jr. '35
Ness, K.M. '36
Patton, L.G. '48
Rapier, D.R. '69
Veys, M.R.Jr. '50
Ramsey, R.E. '53
Beresford, C.H. '42
Erickson, C.W. '43
Rudeen, A.J. '43
Skoo, G.R. '45
Clark, R.W.K. '40
Fisher, P.M. '18
Krippner, E.H. '42
Merrill, J.M. '34
Kempinsky, H.A.Jr. '36
Turner, C.P. '26
Warren, G.F. '25
Dobson, J.W. '26
Fellows, R.A. '70
Lauber, C.D. '45
Rogers, W.G. '16
Ditmars, I.D. '25
Peters, D.R. '45
Neumann, C.M. '26
Cole, S.A. '40
Rue, W.R. '24
Wasley, W.F. '64
Wood, W.R. '19
Gillespie, S.C. '30
Burr, W.M. '23
Burrows, K.G. '46
McClarren, R.H. '25
McDermid, D.C. '24

NU

UNIVERSITY

OF CALIFORNIA

Bohn, J.A. '29
Higgins, N.S. '48
Perkins, D.C. '64
Wilber, H.M. '22
Breed, A.H.Jr. '23
Clarke, G.A. '31
Nichols, M.A. '64
Carrick, R.P. '54
Lutz, R.D. '47
Riemke, R.A. '63
Montgomery, W.L. '24
Watson, D. '27
Bree, J.H. '24
Doane, J.F. '36
Moore, D. '49
Kutz, R.W. '67
Needham, W.S. '42
Jensen, R.V. '52
Obendorf, J.H. '47
Pierson, D.B. '24
Woodward, O.J. '27
Harding, G.L. '40
Bell, D.V. '42
Reinhardt, J.C. '19
Miller, T.K. '35
Arthur, R.J. '43
Gentle, C.B. '42
McCarthy, F. '28
McKenzie, M.B. '22
Witzel, E.M. '37
Watkins, R.A. '30
Ettinger, L. '13
Witzel, F.D. '28
Drew, J.E. '16
Young, R.H. '15
Barbier, E. '19
Denke, F.R. '26
White, A.E. '18
Street, W.S. '22
Dietz, H.A. '25
Williams, E.S. '24
Fontana, R.D.Jr. '27

XI

UNIVERSITY

OF NEBRASKA

Therrien, R.C. '39
Parks, N.C. '37
Woods, E.M. '36
Neff, J.C. '19
Denning, R.H. '38
Cole, D.F. '13
Hyde, R.W. '41
Schmid, M.G. '20
Dunn, W.H. '39
Omicron
UNIVERSITY OF PENNSYLVANIA
Carmen, H.A. '48
Knight, A.B. '29
Place, J.D.Jr. '39
White, C.L. '24
Little, B.A. '19
Nakamura, R.M. '58
Shaw, J.H. '49
Bell, J.H. '47
Horan, P.M.Jr. '49
Lasor, W.S. '28
Maloney, W.G. '36
Kilgore, J.G.Jr. '68
Wilson, H.P. '50
Sparks, D.R. '46
Delamater, R.W. '26
Hall, W.R.II '67
Meagher, E.A. '45
Renninger, F.H. '45
Stuebner, R.L. '45
Mitchell, C.H. '40
Thorp, C.E.Jr. '39

Bowman, R.M. '69
Cawley, R.C. '38
Barnshaw, L.D. '24
Campbell, L.R.Jr. '47
Russell, G.B. '31
Peters, R.P. '21
Standish, L.J.Jr. '32
Fegely, J.F. '57
Cupp, P.J. '21

PI

UNIVERSITY

OF COLORADO

Burrows, K.B. '27
Jones, E.M. '17
Lewis, P.M. '19
Johnson, C.P.Jr. '39
Lenning, G. '23
Eckel, J.G. '20
Hix, C.A. '21
Watrous, W.M. '34
Weese, H.J. '61
Gallagher, W.W. '38
Sellers, J.E. '29
Harry, J. '19
Thomas, E.W. '39
Miller, O.V. '23
Lundgren, J.C. '30
Carpenter, H. '27
Hall, W.M. '15
Howsam, R.L. '38

RHO

UNIVERSITY

OF MINNESOTA

Lust, L.C. '26
Steiger, E.L. '19
Herbison, C.W. '25
Stodola, H.W. '27
Hanna, W.L. '18
Iverson, C.J. '16
Foote, W.W. '23
Denison, C.A. '30
Regnier, L.A. '23
Ludvigsen, E.L. '22

SIGMA

UNIVERSITY

OF KENTUCKY

McCuddy, C.O. '17
Newman, G.W. '25
Morgan, K.C. '39
Smith, K.R. '22
Miller, J.W. '33
Jones, O.L. '20
Manly, S. III '26
Moss, R.O.Jr. '39
Wilson, W.C. '26
Allen, B.L. '27
McCammon, D.K. '31
Davis, L.B. '31
Kane, J.M. '32
Magoffin, B.Jr. '38

TAU

SANFORD

UNIVERSITY

Blakely, D. '70
Poore, A.A. '62
Stoneman, G.B. '58
Giffra, M.R. '37
Priest, D.E. '51
Sturgeon, J.A. '54
Tangeman, J.R. '34
Melvin, S.R. '40
Harris, H.B. '31
Phillipson, D.E. '61
Bradley, G.E. '25
Conlin, W.R. '33
Campbell, J.B. '41
Hanson, D.R. '53
Lahusen, G. '47
Templeton, R.P. '28
Caneer, J. '49
Hancock, J.W. '55
McCourt, P.E. '56
Cowgill, F.H. '17
Miller, F. '17
Martin, D.L. '47
Russell, J.D. '30
Schmidt, T.F. '32
Baty, J.N. '48
Conroy, E.H. '26
Hayes, E.B. '31

UPSILON

PENN STATE

UNIVERSITY

Griffiths, F.R. '46
Koven, M. '38
Martin, A.L. '48
Mills, D.F. '47
Oliver, J. '39
Rierson, W.P. '59
Riker, R.B. '29
Yoder, R.W. '41
Boyd, G.H. '36
Forster, A.H. '28
Gombos, E.R. '65
Houseman, C.T. '51
Metzger, C.H.Jr. '52
Rimel, C.L. '60
Smith, C.B. '40
Fallon, T.F. III '41
Hutchinson, R.L. '30
Rodda, N.F. '29
Taylor, G.R. '64
Collins, D.E. '46
Eaglesham, T.W. '33
Williams, G.E. '40
Hinks, R.R. '42
Walker, R.A. '55
Collins, A.B. '63

Kissinger, G.D. '30
Skoolglund, J.W. '49
Martinez, M.A. '51
Page, V.C.Jr. '37
Dean, R.C. '61
Selden, J.W. '38
Warrender, W.F. '53
Wescott, G.T. '50
Brower, R.F. '56
Ferraro, J.L. '57
Rankin, P.B. '23
Fisher, R.S. '21
Quinn, M.G. '30
Custer, S.A. '41
Leonard, R. '44
Thompson, R.D. '53
Stroud, H.A.Jr. '21
Doyle, R.P. '56
Bright, W.J. '33
Gilbert, P.F. '42
Thomas, G.S. '36
Hancock, R.E. '29
Reichenbach, N.H. '21
Klaban, W.H. '50
Perry, D.G.C. '42
Patton, J.M. '33
Gromiller, J.W. '51
Astoria, L.D. '65
Skoolglund, C.Mr. '18
Megargel, C.E. '22
Van Valkenburg, J.F. '40
Bader, G. '23

PHI

IOWA STATE

UNIVERSITY

Holthaus, K.C. '71
Virden, S.P. '71
Buck, R.M. '30
Lehman, J.A. '70
Plotz, G.A. '69
Ethington, R.D. '71
Bohan, C.L. '28
Ruhsam, H.E. '38
Olson, S. '65
Rule, J.R. '56
Best, L.M. '21
Johnston, J.R. '56
Wharton, J.M. '65
Embre, J.N. '22
Nickerson, H.J. '58
Sterbenz, F. '59
Anderson, W.J. '55
Sterbenz, P.E. '57
Moore, L.F. '27
Arnold, L.E. '23
Drew, D. '59
Wirth, W.J. '34
Brooks, M.R.Jr. '39
Grimes, G.C. '65
Stearns, W.F. '29
Arnold, F.J. '23
Jaspers, R.H. '57
Lasell, R. '54
Oconner, W.J. '56
Gunderson, J.M. '56
Stinson, E. '20
Heckman, L. '24
Thurston, S.G. '66
Riepe, C.R. '35

CHI

UNIVERSITY

OF CHICAGO

Powers, W.F. '23
Puschel, W.E. '29
Caruso, F.F. '22
Solf, W.A. '32
Freidheim, L.E.Jr. '30
Hulbert, H.G. '21

PSI

OREGON STATE

UNIVERSITY

Bronson, J.W. '68
Helgeson, V.A. '25
Larkin, M.D. '66
Nichols, M. '20
Place, D.E. '66
Schuttpeiz, A. '20
Todd, K.C. '32
Waters, M.K. '73
Forbes, J.C. '64
Spriggs, D.G. '53
Compton, M.A. '23
Vandel, G.T. '27
Dunn, H.S.Jr. '42
Robertson, A.A. '63
David, J.E. '47
Rose, R.R. '61
York, R.L. '20
Carson, W.E. '33
Ledgerwood, S.L. '63
Hawley, N.R. '25
Lund, W.H. '24
Klink, C.A. '40
Lieuallen, R.O. '58
Berry, J.H. '63
Roberts, H.K. '40
Bohen, J.D. '50
Hagg, O.N. '23
Strong, H.W. '27
Dexter, R.A. '60
Welch, W.H. '21
ALPHA ALPHA
UNIVERSITY OF OKLAHOMA
Clark, J.A. '30
Fields, D.E. '23

Harmon, J.T. '59
McCullough, K.E. '54
Montgomery, R.S. '26
Olinghouse, J.E. '64
Woodward, N.W.Jr. '51
Woody, W.P. '62
Johnson, D.K. '27
Thomas, W.T. '28
Barrett, F.E. '26
Womack, T.D. '72
Bebbington, C.R. '23
Fleet, J.J. '24
Haas, G.G. '67
Vassilakos, D.G. '70
Colbert, B.R. '48
Runyan, J.R. '32
Barnett, L. '35
Slayton, J.A. '72
Wiggins, W.E. '23
Carson, J.S. '72
Mathes, W.A. '70
Pierce, I.J. '35
Welch, P.F. '35
Goth, P.M. '66
Scott, N.K. '26
Francis, J.E. '56
Joyce, W.V. '24
Breedon, R.H. '26
Crnkovich, J.T. '48
Barnett, W.J. '32
Sharp, G.H. '49
Gordon, Wm.T. '50
Everett, J.P. '37
Gibbs, R.R. '51
Bell, C.S. '55
Miles, J.R. '64
Conrey, T.M. '36
Sidwell, R.R. '32
Akre, C.T. '28
Carmichael, P.W. '30
Harrison, J.M. '31

ALPHA BETA

UNIVERSITY

OF IOWA

Brandhorst, G.H. '27

ALPHA GAMMA

TECH. INSTITUTE

CARNEGIE

Goodwin, C.B. '26

Treon, D. '27

Fleming, W.B. '25

Robinson, J.E. '31

ALPHA DELTA

MIDDLEBURY

COLLEGE

Powers, W.H. '35

Baines, E.A. '40

Costaldo, A.J. '33

Miesse, A.G. '41

ALPHA EPSILON

SYRACUSE

UNIVERSITY

Pomeroy, S.E. '26

Diaso, H.R. '28

Ohara, A.P. '38

Resch, Wm.H. '35

ALPHA ZETA

U.C.L.A.

Cooper, D.J. '55

Francisco, J.B. '27

Nieves, H. '66

Nuckles, T.F. '48

Kuster, D.H. '50

Grube, K.P. '30

Harvey, R.A. '32

Gallup, L.K. '42

Wong, C. '66

Johnson, P.F. '30

Field, B.H. '26

Flickinger, P.E. '47

Hall, J.E. '32

Wulff, K.A. '35

ALPHA ETA

DARTMOUTH

COLLEGE

Peacock, J.A. '28

ALPHA THETA

UNIVERSITY

OF MISSOURI

Gill, B.F. '46

Murray, R.W. '30

Weber, L.W. '29

Gwinner, D.C. '55

ALPHA IOTA

UNIVERSITY

OF ALABAMA

Helms, S.B. '30

Patruno, S.S. '61

Taylor, J.L.Jr. '48

Garland, V. '66

Copeland, D.A. '62

Heslop, Wm.R. '41

Domnanovich, J.M. '66

Graham, R.H.III '60

Koch, R.S. '34

Cronin, D.J. '48

Allen, J.B. '30

ALPHA MU
BALDWIN-WALLACE
 Schnaterbeck, R.A. '53
 Stephens, D.E. '51
 Stephens, M.E. '73
 Kuhnner, J.S. '73
 McCaughlin, J.A. '56
 Smith, P. '40
 Sommer, R.C. '49
 Coy, R.L. '58
 Sutherland, R. '40
 Reynolds, D.L. '51
 Chapman, J.H. '48
 Nemeth, J.K.Jr. '47
 Shirkey, Wm.L. '46
 Larsen, D.H. '53
 Wise, A.B. '43
ALPHA NU
WESTMINSTER
COLLEGE
 Johnson, E. '34
 Himes, R.K. '39
 Pierson, L.R. '56
 Anderson, D.A. '51
 Chew, R.L. '72
 Toporcer, L.H. '54
 Eckles, T. '47
 Fuhrer, R.E. '48
 Fuller, J.R. '71
 Rose, N.E. '39
 Edwards, F.J. '70
 Musser, P.M. '42
 Schneckenburger, D.K. '73
 McCullough, T.L. '57
 Paine, F.V. '44
 French, T.A. '39
 Simpson, J.W. '47
 Anderson, G.A. '71
 Cullison, R.M. '46
 Marsico, F. '54
 Hart, G.R. '43
 Reznik, E.W. '48
 Muchow, Wm.P. '64
 Jamison, W. '39
 Navarra, F.H. '48
 Hildebrand, C.H. '44
 Sternbergh, G.A. '48
ALPHA XI
ILLINOIS INST. TECH.
 Adams, R.J. '61
 Harison, L.C. '47
 Imbsen, G.H. '58
 Kustin, C.Jr. '54
 Verre, J.L. '47
 Browning, R.W. '44
 Caldwell, Wm.M. '39
 Miller, T.H. '70
 Schneeberger, C.E. '61
 Vajda, G.F. '71
 Zinkel, R.R. '50
 Rudolph, O.B. '49
 Arndt, G.E. '63
 Chase, E.D. '58
 Matsuda, G.P. '72
 Poland, J.A. '53
 Buechler, J.R. '60
 Dahlstrom, T.A. '58
 Fijak, T.Jr. '58
 Uram, C.G. '51
 Zielinski, R.P. '68
 Kegel, R.A. '59
 Dommer, R.L. '70
 Anderson, W.E. '41
 Anker, E.J. '55
 Clayton, J.E. '39
 Maihock, D.J. '41
 Muscato, A.R. '66
 Weidenmiller, J.E. '41
 Carey, N.W. '41
 Leland, W.H. '63
 Plengey, Wm.D. '39
 Stewart, W.P. '57
 Balza, J.J. '68
 Faulkner, F.L. '43
 Lovejoy, J.W. '58
 Carlson, R.N. '66
 Erikson, G. '58
 Pado, T.F. '52
 Piepenbrink, R.E. '39
 Wendell, M.W. '54
 Wage, A.E. '49
 Husemann, E.W. '39
 Danforth, G.E. '63
 Collier, T.P. '39
 Jansen, P.Jr. '43
 Coccia, M.A. '42
 McCullough, C.W. '41
 Bledsoe, V.C. '62
 Bergman, R.S. '53
 Freund, R.J. '44
ALPHA OMICRON
MISSOURI VALLEY
 Ort, R.R. '68
 Billington, B.J. '54
 Bernhardt, J.G. '62
 Dowil, R.L. '68
 Thomas, D.A. '69
 Edwards, K.E. '71
 Spaulding, E.D. '50
 Wienke, R.E. '50
 Kohl, K.A. '69
 Lawrence, B. '65
 Schondel, G.E. '63
 Blackburn, J.L. '49
ALPHA PI
PURDUE
UNIVERSITY

Booty, R.A. '61
 Gibson, R.L. '71
 Hunt, R.W. '53
 Hurt, C.D. '63
 Kreps, D.W. '72
 Merrell, J.S. '72
 Murphy, P.F.III '69
 Uhl, R.H.Jr. '72
 Wright, W.P. '70
 Yeakley, M.L. '72
 Mehaliko, G.T.Jr. '69
 Endres, R.O. '69
 Ford, L.C. '72
 Frapwell, R.T. '72
 Nayman, K.R. '71
 Rietz, R.E. '50
 Serafin, A.J. '62
 Sinise, G.A. '70
 Wilson, G.G. '66
 Schmidt, C.V. '66
 Wallisch, D.J. '73
 Moore, T.P. '72
 Hood, G.A. '72
 Leech, J.N. '69
 Stafford, T.H. '66
 Stanley, C.R. '57
 Young, R.A. '66
 Allen, C.D. '72
 Cady, D.W. '66
 Jarvis, A.E.Jr. '67
 Wulf, C.A.Jr. '41
 Baker, R.D. '73
 Leeper, R.W. '72
 Shute, L.A. '63
 Cutshaw, J.W.Jr. '51
 Maxted, W.R. '44
 Sum, R.N. '52
 Freehafer, C.R. '55
 Lindemann, R.C. '71
 Allen, E.N. '71
 Cox, K.A. '72
 Cunningham, D.G. '72
 Kuchar, R.A. '58
 Mihalik, A.S. '68
 Jackson, A.C.Jr. '41
 Baas, J.E. '65
 Givler, M.C. '65
 Mouw, H.J. '46
 Cron, G.L. '69
 Wachter, C.M. '68
 Faulkner, F.L.III '71
 Wood, R.R. '55
 Sausaman, R.F.Jr. '64
 Newgard, J.R. '39
 Allen, R.A. '43
ALPHA RHO
NEWARK COLLEGE
OF ENGINEERING
 Medlin, R.E. '52
 Doby, G.F. '44
 Keach, B.C. '49
ALPHA SIGMA
WAGNER COLLEGE
 Soriano, R.A. '61
 Tosi, A.J. '50
 Cranston, V.A. '52
 Smith, L.J. '46
 Forchelli, J.D. '64
 Hoppe, E.O. '26
 Steeve, H.W. '57
 Tarsio, K.J. '59
 Metzger, J. III '58
 Dietrich, S.W. '38
 Russo, T.J. '47
ALPHA TAU
STEVENS INST. TECH.
 Everdingen, J.V. '62
 Luckert, W.L. '65
 Lewis, W.J. '54
 Gibbs, J.R.Jr. '42
 Heydt, H.J. '70
 Fielding, A.W. '38
 Biamonte, O. '39
 Brooks, A.R.III '70
 McKimm, T. '61
 Brice, J. '68
 Talbot, J.D. '63
 Tamulevucz, J.V. '69
 Cancelosi, J.J. '67
 Barry, A.C. '61
 Forslund, R.P. '59
 Waypa, K. '67
 Kleiber, C.E. '26
 Tobin, R.W. '26
 Lidstrom, J.A. '57
 Crone, L.A. '26
 Wohltmann, C.A. '63
 Stengel, C.W.Jr. '40
 Eckel, E.J. '50
 Oliver, B.H. '26
ALPHA UPSILON
BROOKLYN
POLY INST.
 Alexion, J.C. '38
 Brunjes, A. '26
 Lawler, Wm. '33
ALPHA CHI
COE COLLEGE
 Hoffman, J.H. '71
 Loucks, D.A. '67
 Wise, Wm.M. '58
 Korschach, R.J. '62
 Mackenzie, J.J. '62
 Shors, Wm.F. '29
ALPHA PSI
PRESBYTERIAN
 Williams, R.C. '62
 Varn, A.S.Jr. '43

Wilson, G.D. '39
 Blankenship, D.S. '28
 Varner, E.C. '58
BETA ALPHA
MOUNT UNION
COLLEGE
 Kohl, M.F.F. '30
 Williams, J.L. '49
 Krebs, F.J. '29
BETA GAMMA
BETHANY COLLEGE
 Markley, A.J. '29
 Neal, W.P.Jr. '58
 Hupalo, W.T. '62
 Owen, G.E. '29
 Ciuffoletti, A.G. '50
 Horner, W.H. '29
 Kuti, A.J. '35
 McGill, E.C. '50
 Sandercox, R.A. '51
 Maloy, T.D. '61
 Bonville, W.J. '47
 Cutlip, R.B. '37
BETA DELTA
MARSHALL
UNIVERSITY
 Henderson, C.C. '29
BETA EPSILON
LEHIGH
UNIVERSITY
 Geesey, R.A. '55
 Heilman E.H.III '59
 Holyoke, J.P. '42
 Mahoney, J.E. '73
 Lutz, J.C. '73
 Meyer, H.M. '49
 Schultes J.F.Jr. '73
 Abel, R.W. '51
 Moskowitz, J. '47
 White, E.T. '39
 Haviland, R.L.Jr. '60
 Smith, T.S. '71
 Sunderland, D.E. '62
 Troxel, D.E. '70
 Volpe, R.J. '72
 Graham, W.O.III '73
 Looloian, J.K.Jr. '68
 Pors, L.R. '70
 Mountsier, J.S. '46
 Von Dreusche, C.F.Jr. '49
 Rankin, C.D. '30
 Widmer, K. '34
 Krumrine, P.H.III '70
 Lubbers, A.W. '31
 Hrivnak, G.A. '46
 Moyer, P.F. '46
 Betz, J.D. '38
 Dempsey, P.J. '52
 Gallagher, E.S. '34
BETA ZETA
NORTH CAROLINA
STATE
 Galba, E.P. '31
 Lovelace, E.K. '36
 Lindstrom, J.H.Jr. '30
BETA ETA
UNIVERSITY OF
NEW HAMPSHIRE
 Coldwell, H.I. '31
 Hedman, S. '31
BETA THETA
RUTGERS
 Kidd, H.W. '54
 Pfiefer, D.M. '62
 Agolia, M.A. '73
 Spencer, F.C. '32
 Teichman, W.A. '33
 Geck, R.C. '58
 Putz, R.H. '52
 Baumer, E.F. '31
 Van Dien, F.F. '58
 Holloway, G.E.Jr. '31
 Fritts, T.W. '66
 Pannucci, J. '68
 Brofazi, F.R. '51
 Oneill, J.F. '62
 Wheaton, N.E.Jr. '31
 Kramer, C.R. '31
 Senerchia, F.F. '31
 Dean, J.E. '37
 Shafer, K. '58
BETA IOTA
TUFTS UNIVERSITY
 Berube, C.R. '48
 Huening, P.C. '65
 Miller, D.I. '65
 Virginski, W.B. '61
 Clark, C.R. '46
 Ward, W.R. '36
 Abdu, L. '37
 Stevens, D.E. '49
 Moore, J.R. '47
 Parks, E.W. '47
 Thompson, R.W. '59
 Brickett, C.M. '57
BETA LAMBDA
ST. JOHNS COLLEGE
 Smith, E.I. '32
BETA MU
WAKE FOREST
UNIVERSITY
 Gray, P.J. '65
 Britt, L.J.Jr. '51
 Harrell, V.H.Jr. '39
 Sacrinty, N.W. '44
 Lanford, C.G. '58
 Small, L.C. '51
 Pungler, D.S. '66

Turner, J.C. '52
 Durham, L.D. '36
 Speas, J.I. '62
BETA NU
WEST VIRGINIA
WESLEYAN
 Xenakis, G.A. '42
 Cody, N.F. '33
 Hymes, C.M. '47
 Chapman, V.R. '33
 Arnold, J.S. '36
 Simpson, W.W. '41
BETA XI
HARTWICK
COLLEGE
 Andersen, T.D. '70
 Kirk, J.T. '68
 Cody, L.A. '54
 Swift, R.F. '59
BETA OMICRON
TRI-STATE
UNIVERSITY
 Markel, T.L. '69
 Orr, C.E. '39
 Williamson, E.W. '71
 Smith, R.L. '67
 Eckstrom, W.R. '52
 Tierney, E.R. '71
 Lewis, W.R. '60
 Bryan, R.R. '63
 Klee, J.J. '57
 Maxel, J.M. '57
 Riegel, T.E. '68
 Franconi, A.M.Jr. '67
 Joiner, T.H. '61
 Lienesch, G.W. '41
 Johnson, J.E. '59
 McCormick, J.T. '35
 Jones, J.N. '57
 Forbriger, W.S. '46
BETA PI
FRANKLIN
MARSHALL
 Snyder, C.F.Jr. '41
 Bair, C. '40
BETA RHO
UNIVERSITY
OF TOLEDO
 Fitts, M.R. '73
 Fruth, L.L. '69
 Maher, D.S. '53
 Myers, J.S. '61
 Andre, G.J. '63
 Pfander, L.V. '49
 Hettrick, H.H. '37
 Hess, P.F. '68
 Celigoj, F.A. '63
 Jarrett, T. '44
 Hagele, R.G. '49
 Hutchinson, J.R. '62
 Myers, W.G. '47
 Poirier, T. '62
 Syring, M. '60
 Areddy, J.M. '52
 Boor, R.L.Jr. '55
 Lange, W.H. '59
 Gregor, J.H. '50
 Buell, C.W. '37
BETA SIGMA
UNIVERSITY OF
CINCINNATI
 Beck, D.R. '55
 Grunkemeyer, J.C.III '73
 Segerer, R.W. '54
 Stanley, R.B. '57
 Niehus, D.C. '68
 Honious, G.L. '61
 Beecroft, W.G.Jr. '55
 Niemeyer, A.R. '61
 Schock, D.L. '69
 Weismann, W.S.III '63
 Ayers, M.V. '37
 First, T.E. '54
 Loewenthal, B.J. '66
 Cox, D.R. '60
 Baetz, G.G. '37
BETA TAU
WAYNE STATE
UNIVERSITY
 Croci, R.A. '47
 Dobson, R.C. '42
 Heller, J.A. '42
 Scott, T.M. '38
 Sincoc, F.A. '50
 Lowe, C.E. '47
 Chance, J.H.Jr. '40
 Kopka, D.F. '48
 Flees, W.L. '67
 Gaberson, H.A. '51
 Cox, A.R. '50
BETA UPSILON
MILTON COLLEGE
 Gerhardt, S.H. '71
 Moss, M.S. '66
BETA PHI
MILTON COLLEGE
 Mitchell, W.H.Jr. '41
BETA CHI
AMERICAN
UNIVERSITY
 Anglin, W.M. '49
 Green, D.C. '66
 Tourtellot, P.L. '57
 Travaglini, J.P.Jr. '66
 Stulak, J.N. '66
 Barkdull, W.L. '40
 Vallieres, A.I. '41
 Popham, L.C.III '50

Steinko, F.A.Jr. '64
BETA PSI
RENSSELAER
POLY. INST.
 Nava, E.L. '61
 Smith, G.T. '43
 Vennett, R.M. '61
 Rappolt, J.F. '56
 Bayerdorffer, H.C. '57
GAMMA ALPHA
OHIO NORTHERN
UNIVERSITY
 Hytree, D.C. '61
 Long, E.E. '64
 Weaver, W.W. '67
 Green, T.A. '67
 Thomas, B.A. '73
 Claston, S.F. '72
 Kubis, R.J. '67
 Walton, S.L. '73
 Fornadley, G.T.Jr. '55
 Vogt, T.F. '69
 Wilcox, B.J. '72
 Gourley, J.J. '54
 Needy, J.A.Jr. '55
 Henning, L.R. '48
GAMMA GAMMA
UNIVERSITY OF
CONNECTICUT
 Griswold, D.E. '50
 Ripley, W.C. '50
 Matarazzo, S.C. '62
 Jones, P.B. '67
 Hogan, A.G. '51
 Miller, R.E. '49
 Vanek, R.J. '64
GAMMA DELTA
DAVIS & ELKINS
 Reynolds, A.J. '49
 Schmidt, A.F. '57
 Schollhammer, D.J. '72
 Shaffer, E.J. '64
 Dakes, M.G. '56
 Woodworth, D.M. '61
 Renner, E.H. '49
 Greer, R.C.III '50
 Armitage, J.L.III '57
 Arndt, R.F. '61
 Grote, R.A. '62
 Yulo, F.R. '49
GAMMA EPSILON
UNIVERSITY OF
BUFFALO
 Bamberg, C.A. '55
 Planavsky, R. '64
 Pfeffer, T.L. '61
 Thiel, B.W. '66
 Tennant, P.A. '65
 Ferlisi, J.A. '52
 Barret, W.J. '50
 Pepe, P.A. '56
 Board, H.B. '50
 Hierl, A.E. '61
GAMMA ZETA
BOWLING GREEN
STATE
 Ryder, G.J. '50
 McFerren, S.J. '72
 Conrad, C. '66
 Krotz, G.R. '50
 Deutsch, R.E. '65
 Dedrick, T.R. '67
GAMMA ETA
WASHINGTON
UNIVERSITY
 Kappel, J.C.Jr. '58
 Lange, E.H. '51
 Mitchell, G.L. '61
GAMMA THETA
UNIVERSITY OF
MIAMI
 Riddle, P.J.III '52
GAMMA IOTA
UNIVERSITY OF
ARIZONA
 Cartright, J.M. '66
 Zeitler, E.L. '67
 Austin, E.P. '55
 Tokuyama, H.H. '62
 Stewart, W.D. '62
GAMMA KAPPA
MICHIGAN STATE
UNIVERSITY
 Leindecker, J.P. '58
 Gregg, O.W. '61
 Ash, F. '62
 Cornell, T.B. '56
 Winquist, C.J. '56
GAMMA LAMBDA
ATLANTIC CHRISTIAN
 Capel, E.A.Jr. '67
 White, J.W.Jr. '73
 Rasberry, E.A.Jr. '58
 Giarmis, L.S. '58
 Boykin, M.I. '58
GAMMA MU
MORRIS HARVEY
 Mooney, R.L. '68
 Holliday, R.J. '63
 Roberts, B. '62
 Alexander, G.W.III '64
GAMMA NU
CALIFORNIA STATE
AT SACRAMENTO
 Carlson, A.J. '63
 Petersen, M.R. '67
 Sherwood, R.E. '67

GAMMA XI
WIDENER COLLEGE
 French, B.D. '70
 Haydt, C.J. '67
 Lawrence, G.R. '62
 Linial, A.Z. '68
 Lore, J.G. '67
 Knapp, P.J.Jr. '73
 Fuini, D.L. '64
 Pfeifle, W.G. '64
 Pherson, J.W. '67
 Valent, T.F. '65
 Durney, H.C.Jr. '69
 Rainey, R.G. '67
 Snyder, G.P. '69
GAMMA OMICRON
TULANE UNIVERSITY
 Burkett, W.J.Jr. '71
 Laclede, R.P.Jr. '71
 Allison, T.E. '71
 Burton, Wm.D.Jr. '67
 Krupsky, J.W. '68
GAMMA PI
FINDLAY COLLEGE
 Garvey, C.F. '68
GAMMA RHO
LYCOMING COLLEGE
 Dinger, R.E. '71
 Langdon, Wm.H. '65
 Wiltsee, A. '66
 Herchenrider, M.W.Jr. '71
GAMMA SIGMA
DETROIT INST.
TECHNOLOGY
 Barton, B.G. '68
 Lethemon, W.G. '66
 Standish, J.C. '67
 Barton, G.G. '68
 Dise, J.H. '66
 Brown, J.A. '66
GAMMA TAU
INDIANA INSTITUTE
OF TECHNOLOGY
 Rauscher, K.R. '70
 Richard, J.D. '70
 Vitko, R.P. '71
GAMMA UPSILON
EASTERN MICHIGAN
UNIVERSITY
 Schiller, R.A. '66
 Sibert, B. '66
 Johnston, R.S.Jr. '68
GAMMA PHI
CONCORD COLLEGE
 Bailey, G.W. '71
 Carter, L.M.III '66
 Randall, S.R. '72
GAMMA CHI
INDIANA UNIVERSITY
 McKay, J.T. '68
 Levy, M.L. '72
 Beeman, G.L. '68
 Chaney, J.R. '67
 Neddo, L.M.Jr. '67
GAMMA PSI
LAWRENCE INST.
OF TECHNOLOGY
 Nark, M.B. '68
 Churchill, G.D. '67
 Judge, B.P. '67
 Dawley, R.S. '72
DELTA ALPHA
LOYOLA UNIVERSITY
 Klos, C.P. '70
 Odonnell, J.K. '68
 Stansbury, R.A. '75
 Brophy, J.M.III '68
DELTA BETA
NORTHERN MICHIGAN
UNIVERSITY
 Mercure, R.S. '71
 Deland, T. '70
DELTA GAMMA
TARKIO COLLEGE
 Goldstein, M.D. '71
DELTA DELTA
SLIPPERY ROCK
 DePaul, L.J. '73
THETA SIGMA
UNIVERSITY OF
BRIDGEPORT
 Parker, E.R. '70
DELTA EPSILON
RIO GRANDE
COLLEGE
 Smith, T.E. '72
 White, S.E. '74
Loyalty Fund '77-'78
MEMBERS AT
LARGE
 Elliott, J.W. '69
 Anderson, J.R. '44
ALPHA YALE
 Eames, E.H. '23
 Samuelson, A.W. '43
 Murphy, A.K. '31
 Madison, W.N. '23
 Houston, R.E., Jr. '26
 Knowles, D.I. '23
 Traub, H.J. '21
BETA HARVARD
 Brauns, E.B. '24
 Eaton, S.L. '24
 Hall, L.P. '19

Honor roll

GAMMA UNIVERSITY MASSACHUSETTS
 Barke, H.E. '37
 Dodge, T.E. '66
 Luce, P.E. '36
 Dresser, M. '25
 Gioiosa, A.A. '13
DELTA MARIETTA COLLEGE
 Boiling, P.C. '60
 Rempe, E.T., Jr. '24
 Ward, L.C. '19
 Felici, A. '48
 Frye, J.C. '31
 Hejl, A.C. '55
 Simpson, L.O. '19
EPSILON OHIO WESLEYAN UNIVERSITY
 Dawson, D.L. '42
 Smith, H.A. '34
 Swank, R.W. '49
 Beck, G.C. '40
 Cunningham, L.L., Jr. '29
 Recker, T.L. '35
 Allen, B.P. '22
 Stephens, J.H. '48
 Hockman, Wm.H. '35
 Johnson, O.N. '17
 Rees, W.H. '28
ZETA OHIO STATE UNIVERSITY
 Morrison, R.L. '55
 Sims, J.H. '36
 Keggan, J.C. '52
 Waltz, R.R. '22
 Oberlin, H.R. '54
 Stegmiller, H.W. '32
 Harper, C.L. '40
 Sims, C.M. '10
 Herman, H.A. '24
 Koch, G.G. '61
 Calhoun, R.L. '28
 Tuttle, G.D. '23
 Potts, W.D. '68
 Roos, H.S. '27
 Lemon, G.E. '31
ETA UNIVERSITY OF ILLINOIS
 Given, C.M. '63
 Rayburn, L.P., Jr. '17
 Jakowsky, R.H. '70
 Landon, R.H. '25
 Lawrence, H.D. '59
 Westwood, G.F. '31
 Maughmer, M.D. '69
 Gallagher, R.H. '55
 Raaf, R.C. '20
 Lauterbach, W.W. '18
 Ruegger, J.M. '34
THETA UNIVERSITY OF MICHIGAN
 Bartley, L.D. '34
 Bombery, M.F. '66
 Powell, D.S. '67
 Kleinhans, F.W. '68
 Van Loan, G. '25
 Bieser, C.O. '47
 Hofelich, R.M. '27
 Winters, J.K. '43
 Wilson, W.W. '47
 Nuttall, M.S. '17
 Weaver, T.D. '13
 Wieneke, R.F. '19
 Dunham, D.B. '24
IOTA CORNELL UNIVERSITY
 Skilton, H.I., II '57
 Fogg, S.L. '74
 Cramer, F.J. '26
 Olson, H.G. '31
 Schade, J.A. '18
 Van Aken, J.L. '37
 Melville W.D., Jr. '60
KAPPA UNIVERSITY OF WISCONSIN
 Pridmore, H. '65
 Anderson, E.A. '12
 Ruhsam, E.H. '17
 Zuehlke, U.R. '14
LAMBDA COLUMBIA UNIVERSITY
 Mueller, C.H. '22
 Collingwood, D.M. '14
 Weldon, E.D. '13
 Grunden, W.I. '28
 Yeaman, J.H. '48
MU UNIVERSITY OF WASHINGTON
 Chamberlain, H.E. '67
 Cole, O.H. '15
 Landon, F.J. '35
 Coffee, G. '23
NU UNIVERSITY OF CALIFORNIA
 Richardson, J.A. '29

Stanaro, C.J. '47
 Walker, P.J. '14
 Ragan, E.M. '37
 Wertsch, R.A. '37
 Zanzot, H.C. '31
 Bennett, H.E. '14
 Flickinger, R.W. '50
 Miller, L.B. '15
 Smith, A.B. '15
XI UNIVERSITY OF NEBRASKA
 Felton, H.W. '21
OMICRON UNIVERSITY OF PENNSYLVANIA
 Baker, P.G. '31
 Comery, R.T. '40
 Kulling, D.L. '70
 Vanranst, M.A. '34
 Brown, W.R. '30
 Moomaw, S.J. '52
 Scott, R.E., Jr. '26
 Bardwell, J.A. '47
 Waite, F.R. '64
 Axley, O.O. '23
 Bentz, L.W., Jr. '45
 Brummer, J.A. '28
 Boag, Wm.A. '19
 Decker, M.F. '28
PI UNIVERSITY OF COLORADO
 Giacomini, L.G. '15
 Dereus, V.G. '25
 Brant, W.J. '36
 Webber, H.M. '23
 Walker, C.W. '26
 Stewart, B.M. '33
 Keyes, C.M. '27
RHO UNIVERSITY OF MINNESOTA
 Smith, L.P. '19
 Thompson, T.M. '30
 Anderson, K.E. '30
 Clark, L.S. '20
SIGMA UNIVERSITY OF KENTUCKY
 Engler, F.E. '49
 Bethel, H.L. '37
TAU STANFORD UNIVERSITY
 Yost, F.M. '37
 Wintner, R. '29
 Hyatt, D. '40
UPSILON PENN STATE UNIVERSITY
 Hartman, C.W. '46
 Kline, G.S. '42
 Pischke, R.O. '50
 Jones, H.L. '30
 Peters, T.B. '18
 Smith, R.H. '54
 Jones, J.K. '26
 Spangler, N.W. '42
 Predzin, J.L. '47
 Good, W.G. '58
 Wertz, A.S. '18
PHI IOWA STATE UNIVERSITY
 Mino, J.E. '72
 Ziemann, T.E. '65
 Grossman, J.C. '20
 Arnold, W.R. '25
 Paras, G.S. '34
 Schoelerman, L.D. '66
 Cloys, W. '20
CHI UNIVERSITY OF CHICAGO
 McDonald, G.H. '20
 Vice, A.J. '31
PSI OREGON STATE UNIVERSITY
 Faucett, R.L. '20
 Truttman, F.M. '48
 Bell, G.B., Jr. '32
 Bree, J.L. '30
ALPHA ALPHA UNIVERSITY OF OKLAHOMA
 Kilpatrick, G.A. '63
 Daniels, C.E. '61
 McGee, J.L. '33
 Thomas, J.S. '48
 Thompson, R.J. '28
 Hood, W.E. '24
 Goodner, M.E. '27
 Montgomery, R.P. '23
 Züst, R.A. '24
ALPHA BETA UNIVERSITY OF IOWA
 Lubke, H.A. '38
 Hutchison, E.L. '24
 Hanson, A.W. '28
 Harrington, R.J. '28
ALPHA GAMMA CARNEGIE TECH. INSTITUTE
 Daum, F.R. '27
 Babin, J. '35
 Brown, H.F. '26

Okeson, S.A. '28
 Fischer, D.H. '30
 Sidells, A.F. '26
 Rosing, T.F. '27
ALPHA DELTA MIDDLEBURY COLLEGE
 Frank, H.T. '25
 Siipola, G.T. '30
 Donnelly, J.L. '25
 Anderson, K.W. '25
 Gollnick, E.F. '25
 Happ, C.L. '25
ALPHA ZETA U.C.L.A.
 Butterfield, F.H. '40
 Rowley, E.A. '70
 Pierce, W.R. '51
 Young, F.W. '66
 Trammell, R.L. '70
 Dehavan, D.L. '57
 Froelich, F.H. '30
 Bauckham, A.M. '26
 Fielden, R.C. '27
 Leonard, W.R. '34
 Ulrich, M.L. '26
 Sanders, F.H. '49
 Campbell, L.E. '56
 Manley, O.M. '35
ALPHA THETA UNIVERSITY OF MISSOURI
 Rixman, S.F.H. '49
 Lemon, J.L., Jr. '59
 Clapper, W.O. '57
 Moore, J.A. '30
ALPHA IOTA UNIVERSITY OF ALABAMA
 Hendrickson, J.L. '57
 Lemos, R.M. '50
ALPHA KAPPA WEST VIRGINIA UNIVERSITY
 Toompas, E.A. '47
 Dunlap, A.D. '55
 Clower, J.I. '47
ALPHA LAMBA CASE WESTERN RES.
 Cook, A.J., Jr. '39
ALPHA MU BALDWIN WALLACE
 Restid, B.W. '72
 Geiss, M.C. '46
 Mattox, R.E. '61
 McCue, E.J. '49
 Acton, B.A. '69
 Buehl, W.A. '30
 Grunden, J.P., Jr. '64
 Goss, G.G. '52
 Govich, B.M. '49
 Fatica, M.F. '39
 Alheit, E.J. '44
 Leach, J.K. '41
 Mountz, W. '43
ALPHA NU WESTMINSTER COLLEGE
 Logan, L.H. '60
 Conner, H.R., Jr. '48
 Wilson, T.E. '49
 Scheid, J.E., Jr. '42
ALPHA XI ILLINOIS INST. TECH.
 Graham, C.P. '39
 Hedeon, D.K. '44
 Jensen, N.B. '61
 Gregory, J.J. '39
 Janssen, E.G., Jr. '47
 Sakumoto, W.K. '69
 Morgan, G.A. '30
 Sallmann, D.W. '65
ALPHA OMICRON MISSOURI VALLEY
 Saville, L.J. '73
 Jager, K.A. '68
 Korbitz, W.E. '45
ALPHA PI PURDUE UNIVERSITY
 Collier, W.E. '39
 Deardorff, K.A. '70
 Weinhardt, S.A. '72
 Hess, G.A., Jr. '63
 Richey, R.C. '69
 Witty, J.C. II '41

ALPHA RHO NEWARK COLLEGE OF ENGINEERING
 Moetter, G.M. '39
 Wolpert, F.S. '26
 Kopf, A.S. '26
 Gauch, J.H. '50
ALPHA SIGMA WAGNER COLLEGE
 Grossman, S.B. '62
 Newberg, F.G. '62
 Schroeder, M.O.F. '39
 Gollnick, F.L. '26
 Troast, G.G. '71
 Harvey, G.D. '60
 Jicha, R.H. '43
ALPHA TAU STEVENS INSTITUTE OF TECHNOLOGY
 Bradshaw, R.W. '69
 Biron, R.J. '63
 Creazzo, J.A. '70
 Metzger, L.A. '68
 Kugler, A.N. '26
 Sundberg, E.B. '29
 Zyack, R.T. '26
 Stocker, G.C. '62
 Scheidegg, C.P. '66
 Ermisch, A.R. '26
 McCullough, W.A. '62
ALPHA UPSILON BROOKLYN POLY. INST.
 Crager, W.C. '26
 Kaupp, W.O. '35
ALPHA CHI COE COLLEGE
 Greifzu, J.M. '67
ALPHA PSI PRESBYTERIAN
 Dunlap, D.T., Jr. '59
BETA ALPHA MOUNT UNION COLLEGE
 Thoma, B.A. '50
 Solida, D.J. '29
 Keller, C.C. '29
 McFarland, V.A. '29
BETA DELTA MARSHALL UNIVERSITY
 Winter, P.C. '31
 Britton, G.R. '49
BETA EPSILON LEHIGH UNIVERSITY
 Lynch, J.E. '70
 Chew, E.F., Jr. '51
 French, H.W. '47
 Greene, R.E. '70
 Lewis, G.B. '63
 Underhill, J.B. '51
 Hovanec, G.A., Jr. '72
 Young, R.C. '58
 Ambrogio, J.N., Jr. '39
 Blake, R.E. III '69
 Wilson, R.M. '33
BETA ZETA NORTH CAROLINA STATE
 Coward, W.B. '38
BETA THETA RUTGERS
 Yablonsky, L.R. '65
 Gilde, L.C., Jr. '47
 Orrico, J.L. '70
 Asay, G.W. '33
 Petry, R.K. '31
 Wheaton, R.H. '40
 Gordon, J.F., Jr. '35
 Kuszen, F.N. '37
BETA IOTA TUFTS UNIVERSITY
 Dahlen, K.E. '38
 Rollins, E.B. '31
 Bolger, L.J. '40
BETA KAPPA CENTRE IN KENTUCKY
 Robinson, J.H., Jr. '36
 Willett, J.R. '32
BETA MU WAKE FOREST UNIVERSITY
 Eudy, R.L. '74
 Kraus, G.P. '72
 Matthews, T. '72
 Paris, J.C. '69
 Koether, G.H., III '68
 Ryan, J.T. '59

BETA NU WESLEYAN W. VIRGINIA
 Gaston, W.R. '48
 Brown, C.W. '43
 McCourt, E.H. '33
BETA XI HARTWICK COLLEGE
 Schell, C.S. '73
 Bang, C.D. '72
 Gregory, M.L. '73
BETA OMICRON TRI-STATE UNIVERSITY
 Carlson, E.R. '44
 Alfieri, J.E. '53
 Stewart, J.I. '56
 Deyoe, H.B. '37
BETA PI FRANKLIN MARSHALL
 Anstaett, H.B. '37
BETA RHO UNIVERSITY OF TOLEDO
 Maher, D.E. '65
 Root, R.C. '64
 Allen, J.K. '41
 Sampson, R.D., Jr. '61
 Redmond, R. '65
BETA SIGMA UNIVERSITY OF CINCINNATI
 Brettschneider, D.J. '69
 Eberl, P.H. '72
 Boulmetis, S.N. '62
 Cohron, G.P. '72
 Zimmerman, W.R. '65
 Catlier, J.B. '56
 Sanner, G.W. '63
BETA TAU WAYNE STATE UNIVERSITY
 Adams, T.F. '56
 Schneider, A.E., Jr. '56
 Burke, W.C. '46
 Hubbard, L.W. '47
 Monnett, R.L. '51
BETA UPSILON MILTON COLLEGE
 Campion, J.P. '68
 Barranco, W.S., Jr. '65
 Muggler, T.C. '49
 Putnam, W.H. '64
BETA CHI AMERICAN UNIVERSITY
 Burch, T.A. '63
 Marino, F.T. '40
 Bullard, D.K. '61
 Jeffrey II, J. '51
 Muron, V.A. '51
BETA PSI RENSSLAER POLYTECHNIC INSTITUTE
 Austin, K.J. '74
 Mackey, L.B. '47
 Olender, E.J. '67
GAMMA ALPHA OHIO NORTHERN UNIVERSITY
 Fasold, J.G. '50
 Pentarek III, M.G.J. '72
 Clapper, C.D. '68
 Allen, N.L. '50
 Emerson, J. '65
GAMMA BETA CARTHAGE COLLEGE
 Paton, H. '27
GAMMA GAMMA UNIVERSITY OF CONNECTICUT
 Clark III, A.N. '60
 Zisk, E.J. '51
 Williams, T.L. '66
 Murray, L.P. '32
 Cray III, C.K. '66
 Schott, E.E. '51
 Antes, J.E. '51
 Brockett, W.H. '51
 Barton, R.R. '64
 Dambrosio, D. '61
GAMMA DELTA DAVIS & ELKINS
 Fulmore, I.E. '64
 Lefebvre, A.F. '59

Gudz, W. '49
 Little, J.C. '51
 Testas, L.J., Jr. '55
 Cathie, W.C. '63
 Skelly, E.J., Jr. '53
 Deacon, D.B. '63
GAMMA EPSILON UNIVERSITY OF BUFFALO
 Gia Quinto, R.M. '59
 Terlecky, P.M. '62
 Barrett, R.E. '62
 Bunge, K.E. '66
GAMMA ZETA BOWLING GREEN STATE
 Orr, R.D. '69
GAMMA ETA WASHINGTON UNIVERSITY
 George, W.R. '57
GAMMA IOTA UNIVERSITY OF ARIZONA
 Hofer, M.M. '67
 Alquist, J.W. '59
GAMMA KAPPA MICHIGAN STATE UNIVERSITY
 Abramczyk, T. '61
 Beyer, A.R. '59
GAMMA LAMBDA ATLANTIC CHRISTIAN
 Caldwell II, W.M. '73
 McGilvray, B.F. '73
 Etheridge, N.L. '58
GAMMA MU MORRIS HARVEY
 Davis, A.I. '65
 Keller, R.G., Jr. '63
 Pond, D.R. '68
 Sutton, K. '64
 Clarke, R.D. '65
 Tunajek, J.R. '60
 Siegel, R.A. '66
GAMMA NU CAL STATE AT SACRAMENTO
 Sipes, S.R. '63
GAMMA XI WIDENER COLLEGE
 Priebe, D.A. '62
 Lotter, G.C. '66
 Ricci, V.B. '62
GAMMA OMICRON TULANE UNIVERSITY
 Reid, J.S. '68
GAMMA PI FINDLAY COLLEGE
 Tarr, C.T. '72
 Apple III, C.M. '72
GAMMA RHO LYCOMING COLLEGE
 Bartlow, K.P. '65
 Cone, J.V.W. '66
 Wineriter, G.L., Jr. '71
 Kern, C.A. '70
GAMMA TAU INDIANA INST. TECH.
 Shupler, R.S. '72
 James, E.A. '72
GAMMA UPSILON EASTERN MICHIGAN UNIV.
 Pearsall, A.I. '66
GAMMA PHI CONCORD COLLEGE
 Strick, G.E. '70
 Davis, R.C. '68
GAMMA PSI LAWRENCE INST. TECH.
 Oldberg, R. '68
 Schwartz, C.P. '68
 Weir, T.K. '67
DELTA ALPHA LOYOLA UNIVERSITY
 Liebenritt, D.J. '70
 Bleser, R.P. '70
 Laubhan, D.A. '68
 Brown, M.D. '70
 Longhini, D.A. '68

THE TOMAHAWK

A publication of Alpha Sigma Phi

Summer 1978

Postmaster: Change of address form No. 3579 should be sent to Alpha Sigma Phi, 24 West William Street, Delaware, Ohio 43015.

Address corrections: Please help us keep our addresses up to date. If the man named on label is no longer in college and not at this address, please advise us. Please tell us about any spelling errors or other mistakes. When moving, notify Headquarters as far in advance as possible.