

Putting the bucks behind brotherhood

A Special Report

Is Alpha Sigma Phi a business or a brotherhood?

It's both.

As a brotherhood, it's healthy. Special effort over the past five years has successfully moved the Fraternity from losing Chapters to gaining them; from having a majority of Chapters on the "ailing" list to seeing most regain a strong position on their campuses.

As a business, things could be better. Simply stated, undergraduate dues and fees can no longer support the type of Fraternity that Alpha Sigs want Alpha Sigma Phi to be today. Add to that the considerable impact of inflation.

That's why the response to the annual Loyalty Fund appeal which went recently to all Alpha Sig alumni is so vital. That's why the Grand Council is exploring possible special fund-raising efforts and other avenues to increase income.

Shouldn't the Fraternity simply cut back on services and expenses in keeping with income? Alpha Sigma Phi did just that at the end of the sixties. The results were disastrous. Without proper support, Chapters declined even faster, and so did income. Without communications with the Fraternity, alumni involvement and contributions plummeted.

So a few years ago the Council, after taking steps to operate the Fraternity on a more businesslike basis so the most could be gotten out of every dollar, ordered cut services restored. A revitalized publications program was begun. New and innovative programs such as Career Development were instituted.

Those steps were taken in the face of deficit financing—cautiously borrowing from reserves.

The dramatic revitalization the Fraternity has felt indicates the risk is starting to pay off. But the red ink is still there. Alpha Sigma Phi projects income this year of \$154,000 against a budget of \$160,000. (An accompanying chart gives an overview of the Fraternity's income and expenditures. Members wanting a detailed budget may obtain one by writing to Headquarters.)

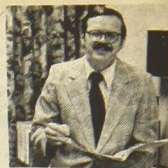
Income is basically derived from undergraduate dues and fees, plus alumni contributions. The goal for alumni gifts this fiscal year is \$35,000.

"But what about the Fraternity's special funds? As old as Alpha Sigma Phi is, it should have quite an endowment!" comments one alumnus.

Well, Alpha Sigma Phi was born in 1845, but its real growth came after 1920. There has never been an endowment as such. The funds of the Fraternity are:

(continued next page)

Stan N. Miller, Purdue '64, Delta Beta Xi '75, has been named to the Grand Council. He succeeds Michel A. Coccia, Illinois Tech '42, who stepped down due to the press of his legal practice and as president-elect of the Illinois Bar. Miller, a lawyer, is a nationally-recognized insurance man in Lafayette, Indiana. He has served Alpha Sigma Phi as national Director of Alumni Affairs. He was instrumental in the founding of Gamma Chi Chapter, Indiana University.



The Reserve Fund: This fund was begun in 1940 as a restricted fund to meet small and short-term emergency financial needs of Chapters and the Fraternity. It was built from an allocation from initiation fees, but that was discontinued in 1966. The fund since then has stood at approximately \$100,000. During the life of the fund, the Council has made 123 loans to 47 different Chapters, amounting to over a quarter of a million dollars. It is from this fund that the Fraternity has borrowed as necessary for operating funds. The bulk of the fund is committed in loans outstanding to Chapters.

The Memorial Fund: Established in 1945, the Memorial Fund is a tax-exempt public foundation devoted solely to educational purposes including scholarships, scholarship awards, and support for the Biennial National Educational Conference. The Memorial Fund contains the resources of the Ralph F. Burns Foundation which exists for scholarships, leadership development, educational and charitable purposes. The assets of the Memorial Fund are currently at approximately \$82,000. (Obviously, none of its earnings may be used for Fraternity operations.)

The Tomahawk Fund: A restricted fund, started in 1923 with a percentage of initiation fees. The 1972 Convention ended that practice. The Internal Revenue Service has ruled that the fund, with assets of approximately \$200,000, may remain tax free only if used for educational purposes, which is now being done. The cost of publishing *The Tomahawk* now has come from the operating funds of the Fraternity.

The A-S-P Corp.: This fund is a tax-paying entity formed in 1959 with stock being purchased in large part by a portion of initiation fees, which is no longer being done. This corporation exists to provide second mortgage financing to assist Chapters with housing. It has provided some 15 loans over the years in the amount of over \$135,000. Its assets of

1979-80 Fraternity Income

Projected: \$156,675.00

Source	Percentage
Initiation fees	37.34%
Pledge fees	13.40%
Chapter fees	.72%
Loyalty Fund (net)	15.96%
Merchandise (net)	.26%
Interest earned	1.12%
Parking rentals	1.15%
Education (Tomahawk fund earnings)	8.94%
Old Gal Gazette	.09%
Insignia	.23%
Miscellaneous	.32%
Undergraduate dues	5.11%
Expansion funds	1.60%
Accounting fees from A-S-P Corp.	1.91%
Expansion funds (borrowed)	10.85%

1979-80 Fraternity Expenses

Projected: \$159,940.00

Source	Percentage
Salaries	41.24%
Office—supplies, maintenance, utilities	6.63%
Telephone & Postage	6.57%
Computer	1.89%
Insurance & Professional Fees	3.86%
Tomahawk & Publications	16.63%
Consultation	5.63%
Expansion	7.78%
Conference	.94%
Program Areas	.84%
Interfraternity	1.31%
Insignia purchases	5.31%
Miscellaneous	1.38%

Top 10 Chapters by number of contributions—1978-1979 campaign

1. Penn State	102
2. Illinois	101
3. Michigan	96
4. Purdue	83
5. California/Berkeley	80
6. Illinois Institute of Technology	77
7. Washington	74
8. Ohio Wesleyan	68
9. Pennsylvania	67
10. Ohio State	66

approximately \$90,000 are almost totally committed in outstanding loans.

In short, there is no endowment that produces operating funds for the Fraternity. And where do those operating funds go?

The bulk of the money—and staff attention—goes to Chapter services, to the 50 campuses where Alpha Sigma Phi operates Chapters and colonies. This is because the Fraternity's lifeblood flows from these campuses.

The most visible service is Chapter visitation. Consultants are normally in their first to third year after graduation, and possess a wealth of leadership experience from their undergraduate Chapters, plus intensive training by the Fraternity in all phases of operations, counseling, leadership development and small group dynamics.

Every Chapter receives one or more visits during the academic year. Visits are directed to the special needs of the Chapter: how to achieve direction for the Chapter facing disharmony; how to recruit for the Chapter having trouble attracting new members; or a total rebuilding effort for the Chapter that is slipping and in need of major revision.

To meet the needs of Chapters, a second Consultant has been added to the staff this year. Staff will complete a total of over 500 visitation days this year. Rising Chapter

membership, growing undergraduate enthusiasm, and increased sophistication in Chapter programs indicate the effectiveness of the Fraternity's consultation work. Alpha Sigma Phi's programs are reflecting our rapidly changing society with new directions in Fraternity education, recruitment, and membership involvement. The Fraternity is strengthening the opportunities it provides for leadership, social development, and self-government not gained by class attendance alone. (See a report in this issue on the National Educational Conference.)

Complementing all this are printed resource materials—handbooks, forms and manuals.

Services are provided to the alumni who work directly with local Chapters. Staff assistance is available to individual house corporations in developing programs and in rebuilding dormant alumni groups. The Fraternity provides printing and mailing services and alumni mailing lists to Chapters and alumni groups (but not to commercial concerns).

Expansion is another program receiving funds. Up until a few years ago there were many local fraternities. Today there are almost none. To grow, Alpha Sigma Phi must go out and **make** its own opportunities for new Chapters and reactivation of dormant Chapters. A full-time Expansion Consultant is traveling for Alpha Sigma Phi. The program is meeting with considerable success. In fact, a major reason a second Chapter Consultant was added to the staff was to work with the increasing number of colonies to bring them to Chapter status so growth opportunities would not be lost.

Translating the ideals of Alpha Sigma Phi into positive action means having a professional staff, headquarters, and people with the time, education and experience to develop the programs and services necessary to fulfill the Fraternity's promise. The experiences of a Chapter in Oregon can be brought to our Chapters in North Carolina by such people. Each Chapter is stronger by virtue of our breadth and diversity, our commitment to our ideals, and our overall stability.

Alpha Sigma Phi is taking a chance by increasing its services. Aiming for success is much better than the certainty of failure. And those goals are being reached. But long-range stability and growth require the "Old Gal" to continue to grow physically and spiritually. It requires commitment from every member.

That's why the Loyalty Fund is so vital. It is a way for every member to share in the complex work of Alpha Sigma Phi. It is a vote of confidence in the importance—today more than ever—of an intangible. It is putting bucks behind brotherhood. ■

THE TOMAHAWK

Vol. 78 No. 2 (USPS 617-920)

Fall 1979

Member, College Fraternity Editors Association

Editorial Office
P.O. Box 4351
Charlotte, N. Carolina 28204

The Tomahawk is the oldest college fraternity publication. It first appeared in November 1847 at Yale College and continued until the college suspended it in 1852. Since its revival in April 1909, it has been published continuously.

Editor
Evin Varner

Editorial Assistant
Carol Hallenbeck

Circulation
Kathy Piatt

Business Manager
Kevin Garvey

Alumni News
Tyler Cox

Art Director
Marty Washam

The Tomahawk is published quarterly by the Ellwood City Ledger, Ellwood City, Pa. U.S.A. for Alpha Sigma Phi Fraternity. Fifty cents a copy. Life subscription \$15.00. All remittances should be made payable to Alpha Sigma Phi Fraternity, 24 West William Street, Delaware, Ohio 43015. Second class postage paid at Delaware, Ohio, and at additional mailing offices.

Postmaster: Change of address form No. 3579 should be sent to Alpha Sigma Phi, 24 West William Street, Delaware, Ohio 43015.

U.S. Postal Service, Statement of Ownership, Management and Circulation. Title of Publication: *THE TOMAHAWK* of Alpha Sigma Phi (USPS 617-920). Date of filing: 9/11/79. Frequency of Issue: Quarterly. Location of known office of publication: 24 West William Street, Delaware, Ohio 43015. Location of the headquarters of general business offices of the publishers: Same as above. Publisher: Alpha Sigma Phi Fraternity, Inc., 24 West William Street, Delaware, Ohio 43015. Editor: Evin Varner, P.O. Box 4351, Charlotte, N.C. 28204. Managing Editor: Kevin J. Garvey, 24 West William Street, Delaware, Ohio 43015. Owner: Alpha Sigma Phi Fraternity, Inc., 24 West William Street, Delaware, Ohio 43015. Known bondholders, mortgagees and other security holders: None. Extent and nature of circulation—average number of copies each issue during preceding 12 months and (actual number of copies of single issue published nearest to filing date): Total number of copies printed: 29,000 (29,000). Paid circulation, Sales through dealers and carriers, street vendors and counter sales: 0 (0). Mail subscriptions: 26,891 (26,766). Total paid circulation: 26,891 (26,766). Free distribution by mail carrier or other means, samples, complimentary and other free copies: 465 (423). Total distribution: 27,356 (27,189). Copies not distributed: office use, left over, unaccounted, spoiled after printing: 1,644 (1,811). Returns from news agents: 0 (0). Total: 29,000 (29,000). I certify that the statements made by me above are correct and complete.

Kevin J. Garvey, Business Manager

John Harry, Colorado '19, recently got Alpha Sig alums in the Sun City, Arizona area together for lunch. Those attending included Tom Thompson, Minnesota '30; George Morgan, IIT '30; Perley Lewis, Colorado '19; Oscar Robertson, Colorado '18; Glendon Minor, Minnesota '22 and Frank Cowgill, Stanford '17.

Unable to attend at the last moment were Stone C. Hallquist, Middlebury '25; Curtis Brabec, Minnesota '28; Charley Lewis, Colorado '21 and Russel Johnson, Minnesota '29. (If you'd like to organize some informal dutch-treat get togethers in your area, contact Headquarters for mailing lists and suggestions.)

Rio Grande shows its concern via community service

By Eric Jacobson
Michigan '74

All Alpha Sigs have hearts beneath their vests. But the hearts beneath Delta Epsilon brothers' vests are exceptionally large. The Chapter's outstanding community service program is why.

Past HSP Doug Borsich says Alpha Sigma Phi is "king of community service on the Rio Grande campus." The Rio Grande community agrees. And it's delighted to have the Alpha Sigs around.

Delta Epsilon has always helped the needy in Rio Grande. Each year the Chapter's commitment to the community grows.

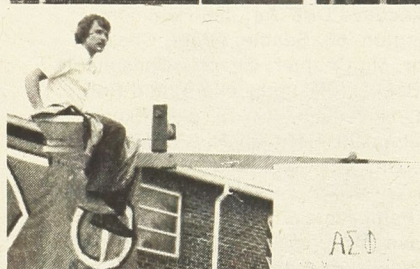
For years the brothers have parked hundreds of cars at the Bob Evans Farm Festival. Annually, the men collect thousands of dollars for the March of Dimes during their 140-hour see-saw marathon. Last year, Delta Epsilon put up new street signs for the Valley of Rio. Brothers even provide tutoring at the Rio Grande Learning Center. And back in 1974, brothers set a record—still unbroken—during a charity 100-hour basketball marathon.

No matter what the project is, Borsich says there's always two key elements to success—brotherhood and total cooperation by the brothers. Everybody must work. And everybody at Delta Epsilon does work.

Foremost, the Chapter works with the community, talking to business men, and to college administrators and faculty, before initiating a project.



At left, two views of the annual Delta Epsilon See-Saw marathon for the March of Dimes. It resulted in radio and newspaper coverage and \$1000 for a good cause. Above, brothers twice a week arrange for mentally handicapped and deaf youngsters to use the Rio Grande pool.



Once a project has been planned, the Chapter's publicity committee collaborates with the Public Relations Office of the college. Local radio and newspapers cover the service event.

"If a job is worthwhile or of human interest, we discover people are willing to publicize the event," says Borsich.

Spotlighting last year was a project where brothers took handicapped children swimming and bowling at the college. These deaf and mentally disturbed youngsters attend the Guiding Hands School, which recently awarded Delta Epsilon with a plaque for its service.

More service projects are sure to come. New this past April was a 100-hour ping-pong marathon for charity. And the Chapter is

organizing a recreation program for handicapped adults in the Rio Grande area.

But community service benefits the Chapter too. Besides the great publicity, there's often substantial earnings for Delta Epsilon. Up to \$2,000 a year. The ever popular car wash earns money for the Chapter. Money raised in similar fund-raisers goes toward plaques, scholarships and general expenses.

Delta Epsilon brothers never have trouble trying to start a project. They have made Alpha Sigma Phi well-known, well-liked and well-received in Rio Grande and on campus.

"Once projects have been successfully completed, the contacts remain," explains Borsich.

Delta Epsilon—proud, hard-working and all heart!

Letters to the editor

Dear Brothers;

Sitting here on the missile site in an isolated part of West Germany has given me a lot of time to think about the past and the future. Sometimes it gets very difficult, sitting here day after day, month after month, watching time go by and wondering how much the real world is changing. Watching Ozzie and Harriet on TV (in German) does not exactly keep me up on the times!

But there is one thing in this world that I know never changes; and that is the Brotherhood of Alpha Sigma Phi. The Brotherhood that I have known in the past, and the brotherhood that I still share in the present, is the one tangible thing in my life. Some people think that brotherhood is an abstract ideal that fraternities strive to achieve. To me it is as real as the missiles sitting on a launcher outside my window. At times I think that I can even describe its color, its dimensions, its capabilities.

But sometimes Brotherhood becomes elusive and is difficult to find. For me to find it, it took a great deal of guidance. It took the dedication and patience of Evin Varner. It took the long time friendship of Randy Lee,

Jeff Hoffman, Randall Campbell, Terry Brown, and the Shore Brothers. It took the inspiration and optimism of Spencer Smith. It required the wisdom of Rick Ainsworth, and the patience and hard work of all the brothers of Beta Zeta Colony. Thank you, Brothers, for helping me find the true meaning of Brotherhood. I now know that all of these things are necessary ingredients for the essence of brotherhood.

Fraternally Yours,
Gary E. Gourley
1Lt., Air Defense Artillery
United States Army

(Editor's note: Few Alpha Sigs have worked harder to experience brotherhood than Brother Gourley. He formed a group at N.C. State University and led it to its successful chartering as Beta Zeta Chapter. Letters to the editor are always welcome. Send them to The Tomahawk, P.O. Box 4351, Charlotte, N.C. 28204.)

News and photo of yourself? Share it. The Tomahawk, P.O. Box 4351, Charlotte, N.C. 28204.

Chapter Consultant position applications are being accepted by the Fraternity. Write Alpha Sigma Phi, 24 W. William St., Delaware, Ohio 43015.

Volunteer an hour or two of your time. Alpha Sigma Phi has a job for you to fit your interests and schedule. It's fun and rewarding. Contact Headquarters at the address above.



Welcome to a special group — the Delta Iota Colony of Alpha Sigma Phi at Longwood College, Farmville, Virginia. Famed as the birthplace of several national sororities, Longwood College now admits male students. And history is being made again with a fast-growing, very spirited group working toward become a Chapter. The initial group at Longwood was formed by Jeff Hoffman, Expansion Consultant. President of the group is Chuck Cole, P.O. Box 198, Longwood College, Farmville, Virginia 23901.

Moving? Save 50¢

It costs Alpha Sigma Phi more than 50¢ every time the Post Office provides a new address (or simply says you've moved, but it doesn't know where.) Help save the Fraternity real dollars by reporting address changes well in advance. Send to Alpha Sigma Phi, 24 West William Street, Delaware, Ohio 43015.

The Stuart W. and Bruce A. Anderson Awards for editorial excellence went to three Chapters at National Educational Conference. Stuart W. Anderson was there to assist in the presentation of checks and plaques. Representing the winners were, left to right, Mark Bahr, Westminster (Old Gal Gazette award); Brian Neff, Rio Grande (Newsletter award) and Mark Smith, Rensselaer (Tomahawk award).



Hoosier Hospitality highlights top '79 educational conference

"I'd like to comment on this amazing brotherhood I felt on the national level that I never thought existed. Thank you!"

That's how one delegate to the 1979 National Educational Conference of Alpha Sigma Phi described the experience. *"Real education from brothers, alumni and staff,"* commented another.

"Hoosier Hospitality" declared special signs all over Gamma Chi's huge, modern Bloomington, Indiana home. Flags, pennants, a painted sidewalk and even a double-decker bus welcomed Alpha Sigs from across the country to the Chapter at Indiana University. Brian Jump and a hard-working group of Gamma Chi brothers made that hospitality felt while feeding, housing and entertaining the group without a hitch.

Dennis "Skip" Parks, Baldwin-Wallace '72, was Conference Director. The former Chapter Consultant is now a dean and advisor to student organizations at Memphis State University, Memphis, TN.

He planned an educational program that included sessions on goal setting, rush, pledge education, expansion, financial management, publications and alumni relations. The delegates learned about Alpha Sigma Phi's minimum standards, the services available from Headquarters, the national province program and the Fraternity's career development program. The group also explored problems relating to alcohol abuse.

Somewhat, between Thursday, August 23 and Sunday, August 26, there was time for area sight-seeing, athletic events, bull sessions with brothers from across the country, a "casino" night party and serenades of nearby sorority houses. Plus announcement of scholarship winners and publication award winners.

The conference, underwritten by the Memorial Fund of Alpha Sigma Phi, is held every two years. A growing number of alumni joined the undergraduates for the learning-and-sharing experience.

Grand Senior President Rick Dexter, Oregon State '60, Westfield, NJ, kicked off the

conference with a state of the Fraternity speech—outlining Alpha Sigma Phi's considerable achievements in recent years and challenging members to work harder to "send the Phoenix soaring even higher."

The Fraternity's Grand Council held its summer meeting in conjunction with the conference.

Faculty included Kevin Garvey, Westminster '75, Executive Director; Jim Hammond, Washington '66, Seattle, Grand Chapter Advisor, Mu Chapter; Chapter Consultants Dave Beckel, Westminster '76, and Rob Sheehan, Westminster '76, plus Expansion Consultant Jeff Hoffman, N. C. State '76.

Also Dick Sanders, Missouri Valley '62, Grand Treasurer, Cleveland, Ohio; Chuck Vohs, Penn State '75, Columbus, Ohio, chairman of a committee that has created a new Chapter treasurer manual; Evin Varner, Presbyterian '58, Director of Publications, Charlotte, NC; Stan Miller, Purdue '64, Director of Alumni Affairs, Lafayette, Indiana.

Also Eric Jacobson, Michigan '74, publications volunteer of Quincy, Illinois; James Hamner, Oregon State '58, Province Program Coordinator, Fort Wayne, Indiana; Al Sternbergh, Westminster '48, Director of Career Development and Placement, New Wilmington, PA; Dr. Otto Sonder, American '47, Director of Scholarship, Oneonta, NY; plus Conference Director Parks.

Also participating were Executive Secretary Emeritus Ralph F. Burns, Ohio Wesleyan '32, Delaware, Ohio, and former Executive Director, Gary Anderson, Westminster '71, Dayton, Ohio.

Delegates broke up into Province groupings to elect undergraduate Province Presidents. And also viewed a new official exoteric pledge ceremony presented by Grand Marshal Evin Varner and a ritual team led by Gamma Chi's Dan Hoffman.

"This was great and it's really for the whole Chapter, not just official delegates. You can bet there'll be more from my Chapter at the next national meeting!" said one bleary-eyed but happy delegate as he headed home. ■

'79 Educational Conference delegates broke into Province groupings to elect Province Presidents who will serve until Convention '80. These men are responsible for co-ordinating a Spring Conclave and other regional activities.

Elected were **I—Barry Johnson**, Oregon State; **II—Scott Grissom**, Oklahoma; **III—Greg Robinette**, Purdue; **IV—Pete Monaghan**, Toledo; **V—Boyd Taylor**, Ohio State; **VI—Mark Bahr**, Westminster; **VII—Wesley Nobles**, N. C. State; **VIII—Bob Walter**, Widener; and **IX—Al Breedlove**, Penn State.

Thirteen scholarship awards were announced at the 1979 Educational Conference by the trustees of the Memorial Fund of Alpha Sigma Phi. Checks went to an outstanding group of Alpha Sig scholars across the country.

Michael Honeyman, Gamma XI, Widener, took top honors as the **1979 Scholar of the Year** with a 3.87 average (out of a perfect 4.0) in accounting. Honeyman is president of the senior class, HSP, a student government senator and a member of the track team.

Friends of Alpha Gamma Chapter Award went to **Carl Corrigan**, Iota, Cornell, where he is HJP and a premed student. He is a teaching assistant and a hospital volunteer.

Louis Zee, Gamma Chi, Indiana University, won the **Friends of Rho Chapter Grant**. He is HSC and is an accounting major.

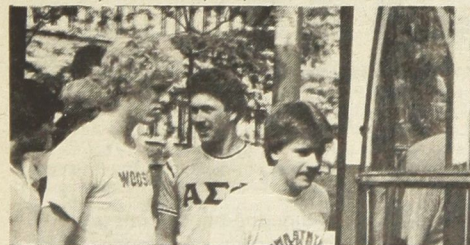
Scholar of the Year in Technology Awards went to **Kenneth Keckler**, Beta Sigma, Cincinnati and **Gary Smith**, Alpha Tau, Stevens Tech. Keckler, a chemical engineering major, is HE of his Chapter. Smith, in electrical engineering, is HSP, a varsity basketball player, IFC editor and on the student newspaper.

Jeffrey Heintz, Alpha Nu, Westminster, was named **Scholar of the Year in Liberal Arts**. He is a political science major and an outstanding musician.

Steve Santilli, Beta Gamma, Bethany, won a **Scholar of the Year-Science Grant**. He is HSP, a chemistry/premed major and a band member. **Bart Balint** of the same chapter, also won the **Science Award**. He is Chapter HCS and a chemistry/premed major who is president of the American Chemical Society.

Given scholarship awards by the Memorial Fund were:

Donald Harris, Gamma Chi, Indiana (biology/chemistry); **Stephen Lewis**, Gamma Alpha, Ohio Northern (pharmacology); **David Argall**, Gamma Rho, Lycoming (international studies); **Jeffrey Robb**, Delta Epsilon, Rio Grande (public administration) and **Daniel Martich**, Beta Gamma, Bethany (chemistry/premed). ■

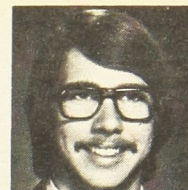


Left, above — Delegates board a bus at NEC. Right, above — Undergraduates at one training session. Left, below — GSP Dexter, center, talks with delegates from East Carolina and Radford colleges. Right, below — Al Sternbergh, Director of Career Development, James Hamner, Province Program Coordinator and Kevin Garvey, Executive Director.



David Beckel, left, and Robert Sheehan have joined the staff of Alpha Sigma Phi as Chapter Consultants. They will be traveling across America during the coming year, working with undergraduate Chapters. Beckel, from Sharon, Pa., was HSP of Zeta Chapter, Ohio State where he graduated cum laude with a major in Natural

Resources, Parks and Recreation Administration. Sheehan, Greensburg, Pa., was HSP of Alpha Nu Chapter, Westminster College. He graduated magna cum laude with a double major in political science and elementary education. Both men have received high national honors as competitive swimmers.



Historic Zeta out to create history today

"There's new life, new vitality and new spirit at Ohio State's Zeta Chapter of Alpha Sigma Phi.

"We got tired of feeling sorry for ourselves and decided to do something about it," says Duane Stanislaw.

Zeta was chartered in 1908. Over the years it has initiated almost 700 men into the Mystic Circle.

In 1951, it moved into its present house at 81 East Fifteenth Ave. in Columbus—right in the middle of fraternity-sorority row. The historic home, which had belonged to Zeta alumnus Arthur Jahn, is approaching the 150-year mark. Outside it has elaborate brick-work and wood trim; inside is hand carved cherry and oak, high ceilings, fireplaces everywhere and even stained glass windows. The house can quarter up to 20 with room for five more in a carriage house.

Things went well for Zeta until the early 70's when membership dropped. At one point the Chapter was down to five members. Somehow, it hung on. But hanging on became a habit. With few members, the Chapter couldn't participate in Greek events, field intramural teams or even hold a good social program.

"We were intimidated by the surrounding large fraternities. We'd knock them for being irresponsible, but deep inside, we were envious and very jealous of their success. We were so busy trying to be content with being small that we forgot to rush," comments Dan McDowell.

But despite that, there was a special spirit at Zeta. *"I feel it is belief . . . belief that there's a place at OSU for Alpha Sigma Phi's philosophies and purposes,"* says Stanislaw.

That belief plus frustration at being small galvanized the Chapter into action. And they've been on the move ever since.

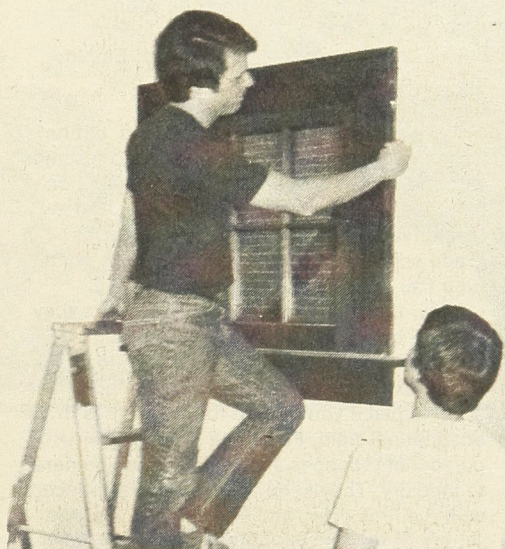
Over 100 posters went up all over campus pointing out that Alpha Sigma Phi is more than just parties and good times. With the entire Chapter involved in rush, prospective members were frequent guests for meals at the Chapter house. (Cook Helen Lynch, with Zeta for 11 years, has played an important role thanks to her considerable skills and personal interest in the Chapter.)

A sound and slide show was developed by Kevin Young and Dave Beckel. (Beckel is now a traveling Chapter Consultant for the Fraternity.) The show has been used on campus, at area high schools and at OSU branch campuses to attract transfer students. Summer rush, unheard of at Zeta, was organized.

The Chapter started to grow. But it grew in more than numbers. It grew in confidence, morale, in the quality of its programs.

A scholarship program was planned. And the Chapter has seen it result in a trophy for the highest grade point average of all fraternities (42) at OSU.

Social life became exciting with theme parties. The campus started talking about



Top, left — Red Herrman, one of Zeta's 10 founders attends Sig Bust. Top right — Ohio State's historic home. Middle, left — Duane Stanislaw and Dan McDowell make repairs on the Chapter room. Middle, right — Parent's Day visitors. Bottom, left — Balerie Tarter, center, an OSU cheerleader and sister of Brother Tom Tarter, is honored at a congratulatory dinner at Zeta. Bottom, right — Dan McDowell hard at his engineering homework.

Alpha Sig's western party, barnyard party (complete with hay-covered floors) and "slide party" with the stairway into the basement party room turned into a sliding board.

With the house filling up, the Chapter was able to hold its first Parents Day—an outstanding success that included a cook-out, a look at the slide show, campus tours and a formal dance.

Zeta took part in Greek Week with gusto. *"We got greater joy and satisfaction out of all of us doing something together than in winning or losing an event,"* says McDowell. Zeta finished in the top five.

Improvements were made on the beautiful old house. Traditions were revived. Like Black and White. An annual canoe trip each May. A Little Sisters program was begun and with that group, the Chapter has held a special picnic and an annual wine and cheese semi-formal.

The Little Sisters, catching the Zeta spirit, invented the annual "Ditch of Drawers". Undershorts of brothers, smuggled out of the house, appear on the front lawn at Halloween, decorated with the owner's name and appropriate holiday garb.

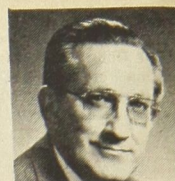
Zeta's softball and volleyball teams made it to the finals this past year. And a bowling team is in the works.

And Zeta is setting the pace in interfraternity co-operation. With sorority exchanges. With a co-operative float for homecoming. Even by sharing ideas on rush and operations with other groups.

Not content to just fill the house, Zeta is now working on a growing roster of "live-outs". No longer inward-looking and insular, the Chapter is reaching out, developing new ideas, trying new programs. *"We're building on the spirit of Zeta future,"* says Duane Stanislaw.

Obviously it is a special spirit indeed. ■

Wallace Abel, Westminster '44, contributed this article as a volunteer in Alpha Sigma Phi's Career Development and Placement program. Brother Abel, Delta Beta Xi '64, is president of his own Scottsdale, Arizona advertising and public relations firm. He served Alpha Sigma Phi as national extension chairman 1964-66 and as publications chairman 1966-68. He previously was coordinator, investor information, Alcoa, Pittsburgh and editor, *General Motors World*, New York.



Your resume: don't give references but offer them "on request"

by Wallace Abel
Westminster '44

Jay is the son of an old friend. In the spring of his senior year at college he brought a draft of his resume to me for advice.

"Who should I include as references?" he asked.

"Jay, the question is not who, but whether," I responded.

He looked at me in disbelief. "But you always have to have references!"

"You're right, but you don't always have to include them on your resume. In fact, it's better if you don't. Let me show you why.

"Your resume is only a sales piece to give a prospective employer an idea of whether you and he have enough in common to go on talking. But it isn't the whole selling job. That comes later in the interviews and how you bring yourself off and in what your references may have to say about you when the time comes.

"But your resume isn't intended to be a complete dossier of your life or even of your educational and professional background. It should only give a quick and accurate sketch of who you are and what you've done. And it should do it in two pages or less.

"When a prospective employer has your resume in hand, he should have material to give the two of you a basis for talking about his needs as they relate to yours. He has something about which to ask you questions about yourself.

"If you are one of many candidates, he has something he can go back to later and refresh his mind about each of you. He likely may compare yours to resumes of your competitors as he eliminates some and accepts others.

"If you happen to be the successful candidate, he may find it a handy reference for deciding your assignments, rather than keeping a bulky file from the Personnel Office in his desk."

"If he checked references on every person who came to him about a job, he'd get nothing else done. The time that he'll check your references may not come until he gets down to deciding among two or three finalists."

Jay still was not convinced. "But won't he need to check up on me before he decides to hire me?"

"Of course he will. And you can bet your life that he will check up on you before you're hired. But in the early stages of screening candidates for a job he's only interested in having a brief summary to work from.

"Or he may offer you a job conditional on good comments from your references."

Jay nodded agreement, but he was still doubtful. "And what if I get a bad reference?"

"Then chances are he'll drop back to the next candidate before deciding. You'll never know that you got bad reference. But one day, after a pregnant pause in your negotiations, you'll get a letter from the firm. In less than a hundred well chosen words, they'll thank you for the opportunity for reviewing your 'very fine

credentials.' They will note that they had a great many applicants to choose from, that the decision was difficult, and that they have chosen someone else.

"If you made a particularly good impression on them, they may wish you luck in your search for a 'suitable position', and express confidence that you will find one soon. The letter is one of those clichés of modern business life, especially with Equal Employment Opportunity People looking over their shoulders."

Jay was beginning to come around, but he wasn't quite convinced. "But I've seen resumes with the names and addresses and telephone numbers of references right on them. And my teachers told me to do it, starting clear back in grade school. Aren't there some times when you use references on a resume?"

"Jay, there are some instances where they still are being used, but using them doesn't make them valid, and the idea is a throwback to old textbooks and older personnel practices.

"One place you're sure to find them is in the educational field. For some reason, their personnel practices are antediluvian compared to industry. They keep insisting on references with the first letter, and sometimes even want letters of recommendation at the same time. But then, these are the same poor souls who, in their arch way, still call a resume a "Curriculum Vitae" or "Vitae" for short.

"You may also find references in rare instances in the engineering field. But because of close association of engineers with industry, the practice is fading rapidly.

"Besides, there's one practical reason for keeping your references' names off your resume. It's for the protection of you and your references."

Jay looked puzzled. "Protection?"

"Yes, protection. When you apply for a job, you don't know who you're dealing with. It may be the chairman of the board. More likely, when your resume arrives, it goes to a clerk in the Personnel Department with more enthusiasm than discretion.

"Let's say you have permission of three people to use their names as references. You list them on your resume, and mail copies of it to 50 companies. Suppose five of those companies check your references right off, but, for reasons other than references, none of them hire you.

"Your references have been pestered five times to no avail, and you have turned up in their minds as a loser. On your next round of resumes, they may be wishing they hadn't allowed you to use their names. Worse, they might become less enthusiastic about you in future calls.

"Giving out names and addresses can be risky business. If you don't give them out in the first place, nobody can check them until the time is right. Until you want them to."

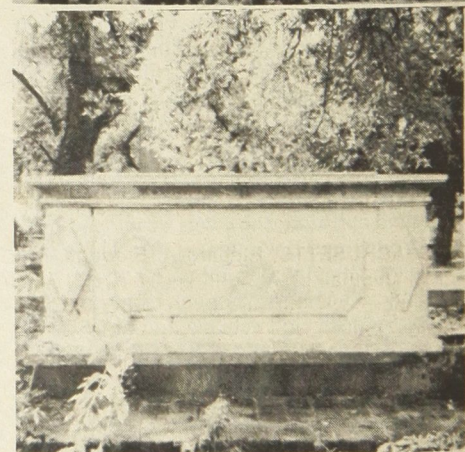
Nothing I had said had gone quite so far as

this last reason in bringing Jay around to my way of thinking. He was convinced, but the issue of references still bothered him. He just had to deal with it. "How should I handle references on my resume?"

I smiled. "The last line on the page should read: 'References: On Request.' This indicates that you've done your home work, you know what you're doing, and that you'll be ready when the information is needed.

"Have your list ready and your permissions from them. Have their names, titles, business addresses, ZIP codes, Area Codes and telephone numbers before you mail the first resume.

That was the way Jay prepared his resume. Two months after graduation day, he walked into a major Chicago Bank. It was a cold call. He ended up competing for a job with a relative of one of the officers of the bank. Jay was hired and he has had several promotions since.



Expansion Consultant Jeff Hoffman was recently traveling through Charleston, South Carolina and took time to check into sites there relating to Alpha Sigma Phi Founder Louis Manigault. At top is the family home, the Joseph Manigault House, 1803, an Adams style house that is open to the public. At bottom is the tomb of the Fraternity's Founder, located in Magnolia Cemetery. The cemetery is out from the city, near the Cooper River. The tomb contains the remains of Manigault, his wife, a son and a daughter.

Volunteer: **Michael S. Sardinsky, University of Charleston '66**, who is now on the placement staff of Slippery Rock State College, has also volunteered to assist in Alpha Sigma Phi's Career Development and Placement program. The program is under the direction of **G. Alan**

Sternbergh, Westminster '48. You can be a resource person. It doesn't take a lot of time. Be available for counseling. Perhaps help write an article. To find out more, write to Brother Sternbergh in care of Fraternity Headquarters.



Alpha Sigma Phi honors its 50 year brothers

For over 250 members of Alpha Sigma Phi, 1929 was indeed a special year. Because that was the year they entered the Mystic Circle.

A golden anniversary is a special occasion indeed. So Alpha Sigma Phi salutes those men lucky enough to have experienced a half century of brotherhood. On Founders' Day, December 6, a special certificate goes to the following men.

(If there are omissions or errors in our list, please advise us.)

YALE: F. A. Allis, Upper Montclair, NJ, John K. Brines, Wellesley Hills, MA, E. P. Bullard III, Bridgeport, CT, Millard A. Kelly, Chestertown, MD, Wm. G. Perrin, Weston, MA, Selden Rodman, Oakland, NJ, Jas. B. Sniffen, Stratford, CT, Moreau Yeomans, Greenvale, NY;
HARVARD: Arthur T. Carpenter, Ridgewood, NJ;

MASSACHUSETTS: Richard A. Eldridge, South Chatham, MA, John B. Ryan, Jr., South Lyndeboro, NH, Richard W. Wherity, Grand Rapids, MI;

MARIETTA: Charles H. Crawford, Wheeling, WV, Edw. V. Heldman, Marietta, OH, John B. Holst, Jackson, MI, Chas. D. Messerly, Martins Ferry, OH, Jacob V. Salisberry, Woodsfield, OH, Lucia B. Smith, Warner, OH;

OHIO WESLEYAN: John D. R. Barbour, Youngstown, OH, Walter D. Betsch, Columbus, OH, L. L. Cunningham, Jr., Bellaire, OH, Geo. A. Drake, Monroeville, OH, Geo. E. Haney, Columbus, OH, Jesse H. Lyons, Columbus, OH, Donald R. Morrison, Elmhurst, IL, Fred H. Morton, Elyria, OH;

OHIO STATE: Charles T. Alberts, Clearwater, FL, Dick J. Cole, Yorktown, VA, Walter B. Devine, Zanesville, OH, Marion J. Herman, Vanlue, OH, Neal H. Magee, Columbus, OH, Robert W. Priest, Columbus, OH, Clark P. Pritchett, Columbus, OH;

ILLINOIS: Sherman C. Anderson, Albuquerque, NM, Wilbur L. Dooley, Pekin, IL, Harry E. Duerst, Elmhurst, IL, Howard C. Dunbar, Stonington, IL, Richard W. Haines, Duquoin, IL, Orval L. Newhouse, Three Lakes, WI;

MICHIGAN: John M. Duffield, Chicago, IL, James E. Garner, Trenton, MI, M. Allan Gilbert, Garden City, NY, Douglas Hammial, Sedona, AZ, Richard H. Jung, Sheboygan, WI, Norman S. McDonald, Sierra Madre, CA, Thos. G. Roach, Grand Rapids, MI, Thorvald C. Sorensen, Detroit, MI, Frank K. Weber, Loudonville, NY;

CORNELL: William C. Agnew, Rochester, NY, John F. Hadley, Oil City, PA, W. P. Hannan, Canandaigua, NY, Paul H. Harrison, Jr., New York, NY, James R. McKowne, Buffalo, NY, J. W. McWilliams, Jr., Rochester, NY, Paul W. Neidhart, Mansfield, OH, Thomas B. Ray, Scarsdale, NY, John H. Roy, Elmira Heights, NY, Jason S. Summers, Jr., Rochester, NY;

WISCONSIN: Carlton Boulay, Tucson, AZ, Henry J. Hardt, Fairfield Bay, AR, Albert E. Streu, Two Rivers, WI, George R. Sullivan, Shaker Heights, OH;

COLUMBIA: John S. Bruns, Arlington, VA, Walter C. Huebner, Morristown, NJ, John M. Keyes, New York, NY;

WASHINGTON: Robert H. Carter, Ephrata, WA, Samuel M. Davis, Bainbridge Isl, WA, Lloyd A. Ducommun, Seattle, WA, Roy L. Gardner, Seattle, WA, Andrew L. Helgerson, Harlingen, TX, William B. Hutchinson, Seattle, WA, Stanley R. Johnson, Langley, WA, William Muhonen, Seattle, WA, Loren W. Schoel, Redmond, WA, John L. Vogel, Seattle, WA;

Convention '80 dates announced

Plan your 1980 vacation now. And plan it for August 21-24.

Those are the dates of the 1980 National Convention of Alpha Sigma Phi. It'll be at the Brown County Inn, Nashville, Indiana. Located at the foot of the Little Smokies, the scenic area is famous for its art and craft villages.

Already at work on the Convention is its chairman, Gary Anderson, Westminster '71. Anderson, former executive director of the Fraternity, is now market administrator for Ohio Bell, Dayton, Ohio.

Details will be announced in future issues. But plan now on being there when Alpha Sigma Phi celebrates 135 years of brotherhood.

Penn State's Upsilon Chapter is on the move. Left, above — the annual chariot race with Alpha Sigma Phi's Phoenix taking the lead. Right, above — Upsilon and Alpha Phi sponsor a booth at the big Spring Week and two youngsters try it out. Below, left — a group of Upsilon pledges and Little Sisters. Upsilon's beautiful home has been receiving extensive redecorating and a major alumni program is also underway.

CALIFORNIA: John A. Bohn, Piedmont CA, Edward N. Dudman, San Francisco, CA, William M. Greuner, Jr., Lafayette, CA, William W. Ladley, Fort Worth, TX, Joseph H. Libbey, Jr., Antioch, CA, James A. Richardson, Alexandria, VA, Elwood W. Wright, Jr., San Francisco, CA;

NEBRASKA: Horace D. Graham, Dakota City, NE, Lloyd W. Jeffries, Grosse Point, MI, Dudley R. Utter, Garland, TX;

PENNSYLVANIA: Paul L. Bachman, West Hartford, CT, Harry E. Dickens, Philadelphia, PA, Huebert W. Gledhill, Jr., Watkins Glen, NY, Albert W. Horton, Laurel, DE, Howard J. Kammack, Goleta, CA, Arthur B. Knight, Los Angeles, CA, G. Edward Swartley, Lansdale, PA, John P. Woodward, Lancaster, PA;

COLORADO: Raymond R. Appel, Grand Junction, CO, Donald Buck, Mercer Island, WA, William L. Gamble, Brighton, CO, Harold C. Greager, Ft. Collins, CO, Wilbur A. Johnson, Denver, CO, Jesse E. Sellers, Scotia, NY;

MINNESOTA: Russell G. Johnson, Sun City, AZ, Gerald A. Krueger, St. Louis Park, MN, Gerald L. Moore, Minneapolis, MN;

KENTUCKY: William R. Barton, Burbank, CA, Thos. M. Beard, Hardinsburg, KY;

STANFORD: Henry Brandon, Los Angeles, CA, Daniel C. Cutter, San Francisco, CA, Richard R. Hanna, Carson City, NV, Louis C. Moore, Carmel, CA, Gordon W. Titus, Arcadia, CA, Reidar Wintner, San Carlos, CA;

PENN STATE: Herbert Ash, Jr., Downingtown, PA, Alden R. Gates, Hingham, MA, Roy F. Hancock, State College, PA, John P. Lockard, Hollidaysburg, PA, Reed B. Riker, Allentown, PA, Nelson F. Rodda, Kingston, PA, John J. Rutherford, Jr., Miami, FL, Donald W. Swain, Silver Spring, MD, Day H. Thomas, Wilkes-Barre, PA, Harry A. Voelker, Pittsburgh, PA;

IOWA STATE: George E. Felton, Eldora, IA,

(continued next page)

Ann Landers, in her nationally syndicated column, quotes **John Trutter, Eta '39**, vice president of Illinois Bell, Chicago concerning phone company regulations. Even Ann Landers knows that Alpha Sigs are the experts!



Russell W. Haviland, Phoenix, AZ, Leroy J. Nelson, Rolfe, IA, Harold C. Sindt, West Des Moines, IA, William F. Stearns, Osage, IA;
CHICAGO: Andrew J. Brislen, Chicago, IL, Walter E. Puschel, Riverside, CT;
OREGON STATE: Howard F. Brown, Vancouver, WA, Frank C. Harms, Springfield, VA, Leslie M. Isted, Dousman, WI, Fred L. Joy, Centreville, AL, Joseph T. McNaught, Beaverton, OR, Melvin R. Roberts, Madera, CA, John W. Zimrick, Ventura, CA;
OKLAHOMA: F. Tom Ashton, Levelland, TX, Glen W. Dawson, Tulsa, OK, Harvey N. Elsey, Waskom, TX, Robert C. Hull, Jr., Tulsa, OK, K. H. Johnston, Bartlesville, OK, Richard C. Longmire, Pauls Valley, OK, R. I. Morrison, Oklahoma City, OK, Jack O. Stone, Lubbock, TX, Forrest Thomas, Jr., Healdton, OK, Armstead York, Okmulgee, OK;
IOWA: Edw. L. Carmody, Davenport, IA, John R. Foster, Ft. Madison, IA, Clifford S. Geisinger, Storm Lake, IA, Diedrick R. Hopkirk, Southbridge, MA;
CARNEGIE: Wm. H. Hilton, Kingston, NY, Thomas W. Hunter, Pittsburgh, PA, Richard Turner, Farmington, CT;
MIDDLEBURY: Raymond B. Ashdown, Ballston Lake, NY, Harry Bullukian, Jr., Franklin, MA, Urho A. Makela, West Wareham, MA, Archie K. Sloper, Jr., Wilton, CT;
SYRACUSE: Leslie C. Clark, Utica, NY, John H. Falvey, Louisville, KY, Edward M. Ferry, Amherst, MA, Jean M. Lameray, Bronx, NY, J. Pemble Orcutt, Ontonagon, MI, Gordon H. Rapp, Syracuse, NY, J. Morgan Smith, Albuquerque, NM, Carl T. Welte, Wayne, PA, Charles H. Woltz, Buffalo, NY, George V. Wright, Syracuse, NY;
UCLA: John R. Hoyt, Solvang, CA, Thos. W. McCabe, Silver City, NM, Benjamin F. McFarland, Newhall, CA, H. Frank Sproul, Burbank, CA;
DARTMOUTH: Gordon M. Lane, Barre, VT, Richard E. Steiber, Norwich, VT;
MISSOURI: Jerome J. Bredall, M.D., Newark, DE, Carl H. Diemer, St. Louis, MO, Robert D. Eardley, Pittsburgh, PA, Rod E. Gillette, Merritt Island, FL, Robert G. Lowry, Aurora, MO, Logan T. Monsees, Enid, OK, Vernon C. Myers, Norwalk, CT, Claude M. Owen, New York, NY, Bradford S. Pyle, Detroit, MI, John F. Roberts, Norman, OK, Paul R. Sanford, Brookfield, MO, James E. Shepherd, Concord, MA, Wallace D. Stewart, Sarasota, FL, Joyce A. Swan, Rapid City, SD, Herman A. Walker, Kansas City, MO, Leon W. Weber, University City, MO;
NEWARK: Stanley F. Spence, Millington, NJ, Carl F. Wilson, West Palm Beach, FL;
WAGNER: Henry A. Baerentlau, Manhasset, NY, Carl H. Ludders, Orchard Park, NY;
STEVENS: Martin J. Duignan, New York, NY, George S. Huntington, Montvale, NJ, E. B. Sundberg, Tyngsboro, MA;
BROOKLYN: Clifford T. Graham, Roslyn Heights, NY;
COE: Arthur M. Busch, St. Paul, MN, Russell A. Peters, Davenport, IA, William F. Shors, Indianapolis, IN;
PRESBYTERIAN: Melvin A. Bennett, Myrtle Beach, SC, Arthur H. McQueen, Loris, SC;

MOUNT UNION: Chas. F. Beardmore, Blue Ridge, VA, Florian J. Brest, Ossining, NY, Cecil H. Coleman, Alliance, OH, George W. Ferner, Cuyahoga Falls, OH, Harold A. Hahn, Cleveland, OH, Reuben P. Hildebrand, Massillon, OH, C. Osborne Hutton, Euclid, OH, Carl C. Keller, Alliance, OH, Frank J. Krebs, Charleston, WV, C. Dana Lamb, Lakeside, OH, Philip R. Lamb, Alliance, OH, W. Lowell Lamb, Tucson, AZ, George R. Leyda, Oxford, NC, Rufus D. McDonald, Flanders, NJ, Victor A. McFarland, Ravenna, OH, Carrell N. Minard, Ravenna, OH, Joseph H. Prince, M.D., Dayton, OH, Kermit K. Putman, Sebring, FL, Mandel E. Rimmel, Akron, OH, George W. Rogers, Salem, OH, Philip H. Styer, N. Canton, OH, Amos D. Sweet, Houston, TX, Donald J. Thoma, East Canton, OH, Edwin J. Trott, North Canton, OH, Ralph S. Wehner, Greenville, PA;
MIT: Wyman Pender Boynton, Portsmouth, NH, Jeremiah F. Cook, Westfield, NJ, Wilfred P. Eaton, Toms River, NJ, Robert A. Foster, Concord, NH, Henry N. Halberg, Little Rock, AR, Ralph W. Hamilton, San Francisco, CA,

Edgar R. Leland, Chestnut Hill, MA, Richard L. Morgan, Indian Harbor Beach, FL, Ralph Peterson, Florham Park, NJ, John A. Plugge, Chevy Chase, MD, Harold R. Spaans, Wayne, PA, Joseph C. Twinem, Cripple Creek, CO;
BETHANY: Walter D. Brock, Portsmouth, OH, Ralph Nelson Fasick, Rupert, WV, James Joseph Harris, McKeesport, PA, W. Howard Horner, San Diego, CA, Oliver K. Loer, Swayzee, IN, Arthur J. Markley, N. Ridgeville, OH, Herald Blanchard Monroe, Lakewood, OH, George E. Owen, Melbourne Beach, FL;
MARSHALL: Gary W. Bobbitt, Huntington, WV, James C. Bobbitt, Huntington, WV, Orman Bowyer, Huntington, WV, Ival H. Brown, Huntington, WV, Mason G. Cyrus, Huntington, WV, Durward D. Darnell, Charleston, WV, Stollie T. DeJournett, Huntington, WV, Conley H. Dillon, Silver Spring, MD, Harper G. Grimm, Charleston, WV, Clio C. Henderson, Wardensville, WV, W. S. Kitchen, Roanoke, VA, Robert S. Musgrave, Bradenton, FL, Roscoe F. Stephens, Milton, WV, Henry E. Thornburg, Huntington, WV;

Alpha Sigs in action

Reports on activities and achievements of Alpha Sigma Phi across the country.

Gamma

Dr. Harvey E. Barke, Massachusetts '37, Farmingdale, NY, is, after 31 years as a professor of ornamental horticulture, the new director of training and research for 15 Flower Time Garden Centers in Linderhurst, NY.

Donald C. Broderick, Massachusetts '41, Vassalboro, ME, is a librarian and director of learning resources.

William E. Carruth, Massachusetts '60, Westfield, MA, is an administrator of computer applications for Massachusetts Mutual Life Insurance Co. in Springfield.

John F. Coman, Massachusetts '60, Southington, CT, is manager of an engineering computer service for Northeast Utilities in Berlin

Malcolm Dresser, Massachusetts '25, Mount Dora, FL, has retired as an executive recruiting consultant. He is a past Grand Treasurer.

Delta

Bruce Daniels, Marietta '64, Anaheim, CA, is senior salesman of medical electronics in Anaheim.

Donald H. Wyman, Marietta '72, Marietta, OH, is assistant sales manager of Doug IAS Products (lawn and garden tools) in Parkersburg, WV.

Epsilon

James G. Ainey Jr., Ohio Wesleyan '48, Lacey, WA, is a commission accounting advisor for Washington Utilities and Transportation Commission

Alton C. Dubois, Ohio Wesleyan '64, Chicago, IL, serves as chief supervisor and administrator at a residential treatment center for disturbed children.

Richard Franklin, Ohio Wesleyan '36, Baltimore, MD, is a professor at Johns Hopkins

University.

The Rev. Charles F. King, Ohio Wesleyan '55, Oconomowoc, WI, is senior pastor at the United Methodist Church in Oconomowoc.

Charles E. McManis, Ohio Wesleyan '51, Las Vegas, NV, is involved with writing and photography.

Dr. William D. Moorhead, Ohio Wesleyan '55, Houston, TX, does research for the oil industry.

Thomas J. Robinson, Ohio Wesleyan '60, Richland, WA, develops computer systems for the Hanford Nuclear Project as program manager for BCS Richland Inc.

Conrad B. Schwarz, Ohio Wesleyan '68, Wilmington, NC, is a sales and credit consultant for Corbett Packaging Co.

Zeta

William P. "Scoop" Dumont, Ohio State '16, Sonoma, CA, was listed in the Omega Chapter by mistake. Our apologies to Brother Dumont.

Richard C. Roth, Ohio State '68, Dayton, OH, works as supervisor of Dayton Power and Light Company's Gas Construction Dept.

Eta

Raymond Glos, Illinois '22, Oxford, OH, has been honored for a decade of service as treasurer on the board of McCullough-Hyde Memorial Hospital in Oxford.

James E. Johnson, Illinois '50, Columbus, GA, is equipment resources manager for Sherman Industries of Birmingham, AL.

Ronald A. Napier, Illinois '62, Huntington Beach, CA, is an operating manager in the freight services.

George M. Nelson, Illinois '39, Sturgeon Bay, WI, now vice president of Boettcher-Nelson Insurance, a company which handles the franchise for Chevrolet, Oldsmobile and

(continued next page)



Architectural barriers: Chapters and House Corporations should take a look at access for the handicapped, particularly if remodeling is planned. Ramps, curb cuts, special parking, widened doorways are important. The first floor, a bath and a bedroom should be accessible

to a person in a wheelchair. Any local society for the handicapped can offer suggestions. If you're the first on campus to do this, beat the publicity drums so others will follow suit.

Cadillac in Sturgeon Bay.

Scott A. Severson, Illinois '71, Arlington Hts., IL, serves as manager of data processing for Flexan Corporation.

Paul D. Veatch, Illinois '47, Deerfield, IL, works in sales for Equitable Life Insurance.

Theta

Douglas Hammial, Michigan '29, Sedona, AZ, is past president of the board of Sedona Health-Care Services. Retired for 11 years, he and his wife plan to tour four European countries soon.

Bruce T. Jacobson, Michigan '54, Toledo, OH, supervises 100 music teachers as a director of music education.

Douglas S. Powell, Michigan '67, Springfield, PA, analyzes results of forest inventories as a research forester in 14 northeastern states.

Leonard A. Sholtis, Michigan '68, Saline, MI, is corporate inventory control supervisor at Hoover-NSK Bearing Company in Ann Arbor, MI.

Wayne R. Stone, Michigan '72, Troy, MI, is a melt shop metallurgist for Jones & Laughlin Steel Company in Warren, MI.

Robert C. Thompson, Michigan '64, Ann Arbor MI, is coordinator of planning for St. Joseph Mercy Hospital.

Theron D. Weaver, Michigan '13, Alexandria, VA, is a retired U.S. Army Brigadier General.

Raymond J. Webb Jr., Michigan '47, Holland, MI, is Midwest regional sales manager for the Pigments Division of Hilton Davis Division of Sterling Drugs Inc.

L. R. West, Michigan '38, Grosse Pointe Woods, MI, is now retired.

Iota

Robert A. Dunbar, Cornell '50, Columbus, OH, is employed by Principal-Dunbar Geotechnical Engineers.

Whinfield D. Melville, Cornell '60, Pittsford, NY, works in data processing and product development.

Jeffrey D. Snedeker, Cornell '75, Madison, WI, now a medical student at the University of Wisconsin.

Mu

Carl B. Anderson, Washington '12, Clearwater, FL, is retired from Gulf Petroleum Company and stays busy at age 90. He's a member of the original Mu Chapter pledge class.

Frank T. Beers III, Washington '56, Las Vegas, NV, is a resident engineer for Holmes and Narver Inc.

John J. Bolan, Washington '45, Portland, OR, is both manager for advertising and credit with the Charles H. Lilly Company and president of the Oregon Association of Credit Management Inc.

Donald V. Boland, Washington '49, Carmichael, CA, now an agent for the Federal Bureau of Investigation.

Robert B. Bouick, Washington '42, Federal Way, WA, is vice president of C. Ralph Gleaming Realtors.

Capt. George W. Bowdey, Washington '34, Scotland, is now retired.

Arthur A. Brandenthaler, Washington '16, Baker, OR, still works at his saw mill at age 83.

Salutes to Sigs!

The Tomahawk has joined with Chapters in saluting alumni who have given them support or of whom they're particularly proud.

Here are some of the current salutes:

Bowling Green State: Ric Courson, Bowling Green '71, now of Toledo, who was Gamma Zeta's houseparent '78-79, a guiding force and helpful in upgrading its pledge program.

North Carolina State: Roger E. Medlin, Newark College of Engineering '52, of Raleigh, who has attended all Beta Zeta social and ritual functions.

Westminster: Alan G. Sternbergh, Westminster '48, New Wilmington, Pa., for long loyalty to the Chapter, service as an advisor and director of the '79 Career Day for alumni and brothers of Alpha NU . . . Kevin Garvey, Westminster '75, Delaware, Ohio, who continues to give Chapter advice and support even as he directs the national Fraternity.

Tulane: David Blevins, Tulane '69, who has been outstanding in support of Gamma Omicron's reactivation . . . Terry Christenson, Michigan '67, Tulane psychology professor, who have given group time and enthusiasm as advisor.

Duncan W. Bricknell, Washington '17, Santa Barbara, CA, has moved to Santa Barbara after three years in Guadalupe, Mexico.

Frederick L. Brown, Washington '52, Pittsburgh, PA, is national manager for field sales for Alcoa Building Products Inc.

Hadley E. Chamberlain, Washington '67, Newport Beach, CA, is a consultant with Nissan Motor Corporation (Datsun).

Thomas E. Dobson, Washington '53, Salem, OR, is part-time director of patient affairs at Oregon State Hospital and part-time Episcopal chaplain to state prisons, correctional Institutions and hospitals in Marion County.

Donald E. Engdahl, Washington '27, Spokane, WA, is retired.

Allen J. Erickson, Washington '37, Seattle, WA, retired last year as vice president of operations for Northwestern Glass Company for 32 years.

Irving H. Friese, Washington '31, Tacoma, WA, retired in 1975 from the Pacific National Bank in Tacoma.

Stuart C. Gillespie, Washington '30, has traveled since retirement and is a member of View Ridge Swim and Tennis Club, Swedish Club and Puget Sound Maritime Historical Society.

Eric G. Lund, Washington '72, Edwards, CA, is a First Lt. in the U.S. Air Force in the fields of contract management and research and development.

Paul F. Munson, Washington '48, Mercer Island, WA, is self-employed as a manufacturer's representative.

Stephen Nute, Washington '64, Eugene, OR, is a health educator in Eugene.

John F. Pool, Washington '62, El Paso, TX, is a special agent with the U.S. Department of Justice, Drug Enforcement Administration.

Dick Ramsey, Washington '53, Bothell, WA, is a pharmacist and owner of Ostrom

Enterprises Inc.

Dr. Charles M. Smith, Washington '12, Provo, UT, retired six years ago from practicing medicine at age 85. He also is a member of the chapter's first pledge class.

Mark D. Still, Washington '75, Del Rio, TX, is a Second Lt. in the U.S. Air Force and received his wings in May at Laughlin Air Force Base in Texas.

Dr. Richard H. Tew, Washington '63, Grass Valley, CA, recently opened his new medical practice.

Raymond D. Torbenson, Washington '31, Seattle, WA, is a lawyer with the Professional Service Corporation firm.

George F. Warren, Washington '25, founded and has supported the Warren Reading Foundation Inc., an organization which has helped more than 6,000 students acquire better study skills.

W. Russell Wood, Washington '19, Seattle, WA, is the retired president of Skagit Logging Company.

George S. Woodworth, Washington '26, Portland, OR, has retired from his law practice, having spent most of the last 25 years as Oregon's Assistant State Attorney General.

James H. Yeaman, Washington '48, Charlottesville, VA, works in the comptroller's office at the University of Virginia.

Nu

Howard E. Bennett, California '14, Oakland, CA, has visited several continents since his retirement in 1964 as a chemist and salesman for the Sherwin Williams Company.

Don Perkins, California '64, Sacramento, CA, is a special projects forester for the California Department of Forestry.

Robert A. Wertsch, California '37, San Francisco, CA, is a lawyer in San Francisco.

Minor K. White, California '56, Ferguson, MO, works on mobilization planning as a Lt. Col. in the Chief Mobilization Plans Branch of the U.S. Army.

Omicron

Roger G. Bowman II, Pennsylvania '69, Thief River Falls, MN, is manager in an Insurance Department.

Milton F. Decker, Pennsylvania '28, Mamarsneck, NY, is owner of M. F. Decker Associates, a sales consultant to publishers in the areas of sales development, marketing research, promotion, presentations and direct mail.

The Rev. William W. Jones, Pennsylvania '48, India, has been appointed superintendent of the international Woodstock School.

John G. Kilgore Jr., Pennsylvania '68, Northville, MI, is a financial analyst in Detroit, MI.

Pi

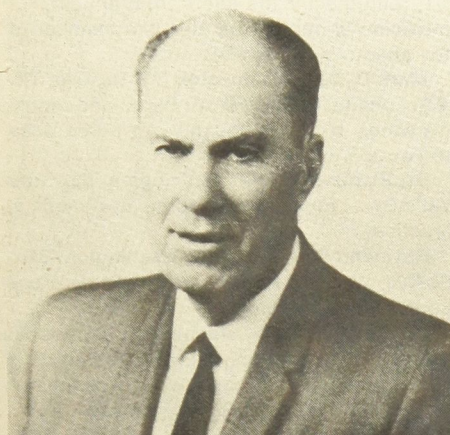
Col. John Harry, Colorado '19, Sun City, AZ, served 19 years as a city official for the Town of Glastonbury, CT, before his retirement in 1973.

The Rev. Edgar Wahlbert, Colorado '19, Estes Park, CO, has been appointed chaplain of the Newsletter Association of Alpha Sigma Phi. A retired minister, he has been associated

(continued next page)

Happy birthday. The 1979-80 year brings some important milestones for some Chapters. Iota, Cornell, turns 70; Omicron, University of Pennsylvania is 65; Beta Gamma, Bethany, hits 50 as does Beta Epsilon, Lehigh, while Gamma Delta, Davis and Elkins, celebrates its 30th. Psi, Oregon State, marks 60; Beta Zeta, N. C. State,

marks the 50th anniversary of its first chartering; Beta Xi, Hartwick and Beta Omicron, Tri-State, will hit 40 as will Beta Chi, American and Rensselaer Polytechnic's Beta Psi. Gamma Phi, Concord, reaches 20 and Delta Delta, Slippery Rock, will mark its first decade.



In 1579 Sir Francis Drake landed in what is now California and explored the "backside of America" that he dubbed "Nova Albion" (New England.)

The landing allowed for observations of flora, fauna, Indians and terrain and there Drake claimed a new kingdom for Queen Elizabeth I.

But where exactly did he land? That question has dogged scholars and created heated debate.

Alpha Sig **Warren Hanna, Minnesota '18**, hasn't solved the riddle with *Lost Harbor* (University of California Press, \$15.95) but his book is gaining rave reviews during the Drake Quadricentennial year.

Hanna is the founder of a prominent law firm specializing in workers' compensation cases. He became fascinated by the mystery surrounding Drake's landing since reading a book on the subject in 1927.

So Hanna decided to apply the judicial temperament he had developed from the 12 years he spent as a workers' compensation judge to the Drake problem. "I had developed a way of looking at both sides of an issue," he says. "I didn't want to be an advocate. I wanted to get the answer—if there was one."

The book, described by one reviewer as "a fine, readable work of scholarship", presents a thoughtful but enthusiastic discussion of the evidence and clues about where Drake might have landed and compares the various theories.

One columnist wrote about the book: "Hanna presents the case for each landing site. He acts judiciously. He makes no conclusions of his own, but invites the reader to review all the evidence, study the clues and fill in his own score card."

with a number of churches in Michigan and Colorado and represented the United Nations Relief and Rehabilitation Administration abroad in 1944.

Rho

Lawrence S. Clark, Minnesota '20, Edina, MN, supervises approximately 800 volunteers in Minnesota as a District SCORE (Service Corps of Retired Executives) representative.

Dr. Owen W. Wangensteen, Minnesota '17,

Minneapolis, MN, spoke at the 25th annual meeting of the Iowa Academy of Surgery in Mason City. As professor emeritus of surgery at University of Minnesota, he is regarded as one of the nation's distinguished senior members of the academic surgical community. His primary research interest is intestinal tract surgery.

Niles Wedge, Minnesota '20, Zumbrota, MN, has managed the family's Wedge Lumber Company since 1922. His sons, Jim and Dick, have helped to manage the company and develop "Wedgewood," an 18-lot development south of town.

Sigma

Beriah Magoffin, Kentucky '38, Louisville, KY, has been accepted as a member of the National Society of the Sons of the American Revolution, Alexandria, VA.

Tau

Gene L. LaHusen, Stanford '47, Riverside, CA, is vice president of an insurance agency.

Upsilon

Lt. Col. Albert A. Griffith, Penn State '71, is a Lt. Col. in the U.S. Army—not a 2nd Lt., as was noted in the Spring issue of *The Tomahawk*. He is stationed in Frankfurt, Germany

Richard G. Liedy, Penn State '55, Parker, CO, has moved back to Colorado from a short-lived real estate venture in Sarasota, FL.

Alexander H. Lord, Penn State '62, Lake Worth, FL, has accepted the position of administrator of Northeast Florida Hospital.

M. S. Taite Jr., Penn State '41, Fairfield, CA, has returned to full-time work as a health inspector for Soland Co. Department of Public Health.

J. H. Whisler, Penn State '33, Walnut Creek, CA, is semi-retired from Allis-Chalmers, a manufacturing agent for Electronic Supervisory Control and Telemetry in Water and Waste-water Industry for northern California.

Phi

Ray Conger, Iowa State '24, State College, PA, is professor emeritus of physical education at Penn State, where he takes movies of football games. The winner of several national track events, he set an American record for 1,500 meters in qualifying for the 1928 Olympics.

Jerry W. Eilers, Iowa State '68, Marion, IO, is a plant engineer in Cedar Rapids, IO.

Geoffrey C. Grimes, Iowa State '65, Cedar Falls, IO, is a partner in the architectural firm of Stenson, Warm and Grimes.

Scott E. Olson, Iowa State '65, Cedar Rapids, IO, is president of Olson, Popa and Novak, an architectural firm in Cedar Rapids, IO.

Jimmy R. Rule, Iowa State '56, Nora Springs, IO, has been elected president of the Iowa Farm Business Association, a record-keeping computer analysis organization with more than 3,500 members.

Edward Thayer, Iowa State '20, Riverside, CA, is retired.

Lyle E. Ziemann, Iowa State '61, Chesterfield, MO, is an engineering superintendent for The Monsanto Company in St. Louis, MO.

Chi

William J. Davis, Chicago '46, Tryon, NC, is a

retired attorney and head of the Insurance Trade Association.

James V. Root Sr., Chicago '24, Danville, IL, is a retired advertising agency owner and commercial artist.

Psi

Jack D. Bolen, Oregon State '50, Walla Walla, WA, is an engineer for Fairbanks-Morse Pumps.

Marshall Hieronimus, Oregon State '75, Seattle, WA, is an associate engineer at Boeing and a Backgammon Club member.

Pat Marquis, Oregon State '64, Anchor Point, AK, owns P & R Land Surveying and is associated with the Alaska Society of Professional Land Surveyors.

Kevin S. Nichols, Oregon State '73, Arvada, CO, is a traffic and transportation engineer for Centennial Engineers of Wheat Ridge, CO.

Gene P. Runtz, Oregon State '66, Bandar Pahlavi, Iran, is senior forest engineer for Charnell & Associates of Iran.

Richard E. Sherman, Oregon State '73, Treasure Island, FL, is general manager of The Island Inn Resort Hotel.

J. Wayne Watson, Oregon State '61, Phoenix, AZ, works in real estate and investing brokerage.

Alpha Alpha

Lyle K. Bartlett, Oklahoma '48, Kalispell, MT, is a real estate consultant.

Perry M. Goth, Oklahoma '66, Ventura, CA, is a sergeant in the Ventura Police Department.

Thomas R. Hall, Oklahoma '73, Dallas, TX, is regional market development manager of an overhead door corporation in Dallas and serves as United Way team captain.

H. W. Peace II, Oklahoma '58, Casper, WY, is an exploration manager in the Rocky Mountain District of the Union Oil Company in California.

Leslie Pierce, Oklahoma '50, Tulsa, OK, is executive vice president of Utica National Bank and Trust Company.

Lee S. Ridgeway, Oklahoma '65, Boston, MA, is an organist, harpsichordist, choral conductor and teacher at the Trinity Church in Togsfield.

James A. Slayton, Oklahoma '72, Oklahoma City, OK, is a petroleum landman.

Terry D. Womack, Oklahoma '72, Duncan, OK, is an engineer in electrical research and development.

Alpha Beta

Carl F. Distelhorst, Iowa '25, Winter Park, FL, was formerly a financial consultant associated with a savings and loan business.

Alpha Delta

Linwood B. Law, Middlebury '25, Buffalo, NY, has retired after 40 years with the Buffalo Chamber of Commerce.

Alpha Epsilon

William H. Tschirhart, Syracuse '48, Bethpage, NY, is a title closing attorney for the First American Title Insurance Company of Garden City, NY.

Alpha Zeta

Arthur M. Bauckham, UCLA '26, Honolulu, HA, retired in 1973, but still does some consulting work for his former employer.

David W. Dial, UCLA '70, Pomona, CA, is a student in mechanical engineering at California State Polytechnic University.

Blake H. Field, UCLA '26, Needham, MA, is a

Alpha Mu Chapter, Baldwin-Wallace College, Berea, Ohio, is undergoing a period of reevaluation leading to recolonization in the fall of 1980 following suspension by the Grand Council. Action was taken because the Chapter—which dates back to 1883—had not been operating in a manner acceptable to the standards of Alpha Sigma Phi or the College administration. Alumni of the Chapter are urged to contact Headquarters to learn of how they can assist in recolonization efforts.

retired vice president of investments for the Boston Safe Deposit and Trust Company. He is treasurer of a private charitable foundation and has enjoyed worldwide travels with his wife, Dorothy.

Herbert L. Mitchell, UCLA '33, Pasadena, CA, is executive vice president of Hamada of America Inc., a distributor of offset printing presses.

Ronald A. Nelson, UCLA '53, Yucaipa, CA, is a drug abuse counselor and a retired U.S. Army Lt. Colonel.

Robert Trammell, UCLA '70, Ontario, Canada, is a senior systems programmer.

The Rev. Frank Young, UCLA '66, Holly, MI, is rector at St. John's Episcopal Church.

Alpha Theta

Donald F. Bittner, Missouri '61, Stafford, VA, is military historian at Command and Staff College and lecturer in history at Northern Community College in Woodbridge, VA.

William O. Clapper, Missouri '57, Vinton, VA, is supervisor of foreign languages for the Roanoke County Public School in Salem.

The Rev. Norman E. Leach, Missouri '61, San Francisco, CA, is director of the San Francisco Healing Community Project, a program concerned with the Jewish, Catholic and Protestant communities and the disabled. He is author of the first comprehensive policy and program declaration to be adopted by a denomination, an accomplishment which earned him the National Ecumenical Service Recognition Award in 1977 from the National Council of Churches Commission on Regional and Local Ecumenism.

Alpha Iota

Harold W. Hansen, Alabama '51, Metuchen, NJ, is chief industrial engineer for Fedders Corporation of Edison.

Alpha Mu

Dennis C. Brown, Baldwin & Wallace '60, Huntsville, AL, is headmaster at the Randolph School in Huntsville.

David W. Francis, Baldwin & Wallace '67, Chippewa Lake, OH, is an advertising executive with Loos, Edwards and Sexaver Inc. in Akron.

Nathan Ives, Baldwin & Wallace '41, Haddon Heights, NJ, is in the food sale business.

David K. Schneckenburger, Baldwin & Wallace '73, Barnhart, MO, is a sales representative for Jones & Laughlin Steel Corporation in St. Louis, MO.

Alpha Nu

Clarence W. Abel, Westminster '44, Scottsdale, AZ, is a free lance writer/editor.

Henry J. Brennaman, Westminster '42, New Castle, PA, has retired. He is a member of the original group that signed the first charter of Alpha Nu Chapter.

Steve Catarinella, Westminster '69, Turtle Creek, PA, is president of Steve Catarinella Construction Company Inc.

Rodney Chew, Westminster '72, Smithton, PA, is an engineered-apparatus contract estimator for the Elliott Company.

Robert M. Cullison, Westminster '46, Phoenix, AZ, is an insurance agent.

Ross Donaghy, Westminster '55, Spring, TX, is employed at the U.S. Steel Sales Office in

Houston.

The Rev. Ralph M. Donaldson, Westminster '42, Eighty Four, PA, is a minister at Emmanuel United Presbyterian Church.

David M. Eakin, Westminster '69, FPO NY, is a lieutenant in the U.S. Navy.

Robert D. Ferguson, Westminster '27, Pittsburgh, PA, is a partner in the law firm of Tuchsor, Areusberg, Very & Ferguson.

Dr. George R. Hart, Westminster '43, New Wilmington, PA, is an ear, nose and throat specialist in New Castle.

The Rev. Alfred C. Horn, Westminster '57, Kent, WA, has been pastor of Marcus Whitman United Presbyterian Church for the past nine years.

John L. Johnston Jr., Westminster '71, Pittsburgh, PA, is a certified public accountant and a partner in the firm of Thomas W. Elverson & Company.

Bruce A. Kayuha, Westminster '69, Norfolk, VA, is an attorney in the U.S. District Court, Eastern District of Virginia.

Nelson Martin, Westminster '73, Punxsutauney, PA, is clerk of the National Supply Company, a division of Armco Steel Corp.

John H. Mercer, Westminster '40, Kaneoche, HA, is a claims supervisor for the Hawaiian and Guaranty Company.

Emmette E. Mitchell, Westminster '74, Scottsdale, PA, is an auditor for the firm of Ernst & Ernst.

R. Bruce Robinson, Westminster '67, Carbondale, CO, is assistant vice president of the First National Bank of Aspen, CO.

Charles W. Salzmman, Westminster '74, Pittsburgh, PA, is a toxicology technician for the Alleghany County Coroner's Office in Pittsburgh. He also is a graduate student in pharmacology/toxicology at Duquesne University in Pittsburgh.

The Rev. John R. Sharp, Westminster '59, Baltimore, MD, is pastor at Govans United Presbyterian Church.

John Stewart, Westminster '72, Sewickley, PA, is a claims advisor for the Security Insurance Company of Hartford.

Charles E. Vogel, Westminster '49, Columbia, SC, is manager of quality control engineering for the Westinghouse Nuclear Fuel Division in Columbia.

H. Lee Waldron, Westminster '62, 1st BN, 41st FA, APO NY, is a major in the U.S. Army assigned to the S-4 missile battalion.

Warren E. Watkins, Westminster '51, Clark Summit, PA, is manager for customer service at the International Salt Company.

John E. Williams Jr., Westminster '49, Laporte, TX, is a U.S. Steel sales representative.

Samuel C. Work, Westminster '52, Laplace, LA, is a plant controller for Kaiser Aluminum and Chemical Corporation.

Alpha Xi

Robert L. Allen, Illinois Tech '53, Portland, OR, is mayor of Portland.

Steven G. Cheehy, Illinois Tech '74, Bolingbrook, RI, designs valves and pressure vessels.

Notes

A word of explanation: "You've got my year wrong!" That cry comes often from readers. Sometimes indeed we do. But some confusion results from the fact that *The Tomahawk* identifies brothers by year of initiation, not year of graduation.

Alumni groups: Organizational efforts are underway to form a Detroit Area Alumni Council. Executive Director Kevin Garvey and Grand Councilor Stan Miller have visited in the area, working with interested brothers. Brother Stuart Anderson, Dearborn, hosted one dinner gathering. For information on future meetings, drop a note to Fraternity Headquarters.

The Greater Piedmont Alumni Council has held several meetings in North Carolina. Contact **Randall Campbell**, president, 4219-3 Avent Ferry Rd., Raleigh, N. C. 27606. Alpha Psi alumni, Presbyterian College, are working on an Alumni Association. Contact **Rev. Randon H. Jackson**, First Presbyterian Church, 209 West Coffee Street, Greenville, S. C. 29601.

Gary L. Helwig, Illinois Tech '67, Arlington, VA, assists the U.S. Navy in the design of command and control equipment as a combat system engineer.

Robert A. Kegel, Illinois Tech '59, Manhattan, IL, is general manager of the Beling Consulting firm in Joliet, IL.

John W. Lovejoy, Illinois Tech '58, Phoenix, AZ, has been named an assistant general auditor of Armour and Company, a subsidiary of the Greyhound Corporation. A former supervisor of field audits, he is the recipient of the National Honor Award given in conjunction with the certified internal auditors examination.

Thomas H. Miller, Illinois Tech '70, Glen Ellyn, IL, is a property supervisor for the CNA Insurance Company, responsible for policy development and nationwide training in fire protection.

Robert W. Rahn, Illinois Tech '51, West Hartford, CT, has been elected associate general counsel in the law department of The Hartford Insurance Group.

Alpha Omicron

John T. Cannizzaro, Missouri Valley '71, Sherman Oaks, CA, is a computer operator in data control in Century City, CA.

Leonard L. Molander, Missouri Valley '61, Hoffman Estates, IL, is store manager for Venture Stores, a discount department store in Schaumbury, IL.

Frank H. Sleeper, Missouri Valley '49, Madison, MS, is an agency administrator for Dixie National Life Insurance Company in Jackson.

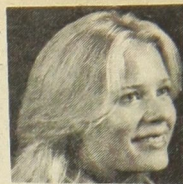
Jerome C. Winegar, Missouri Valley '56, Boston, MA, is headmaster at South Boston High School and director of Kettering Foundation Summer Institute.

Kwai Lum Young, Missouri Valley '49, Albany, MO, practices general dentistry.

(continued next page)

Undergraduate Chapters submitted photos and background information, then the Chapters voted on the **1979 National Alpha Sig Sweetheart**. The winner is **Heather Mattson**, Cornell, the Iota nominee. She is an Iota Little Sister and majors in applied economics in the College of Agriculture. First runner-up is Susan Elaine

Meredith, Indiana University Chi Omega nominated by Gamma Chi. She is a symphonic harpist. Second runner-up is Marty McQuid, Slippery Rock Sigma Sigma Sigma and nominee of Delta Delta Chapter. She is majoring in public health.



Salutes to Sigs!



Chapters of Alpha Sigma Phi were recently asked to share names of their alumni of whom they're particularly proud.

Cornell's Iota Chapter quickly submitted the name of **Charles A. Bell** (Westminster '43, later affiliated with Iota). And with good reason. Bell, the Chapter said, is a good example of "success, diversity and determination."

This Iota Sig is currently Executive Vice President and member of the board of Hilton International. Headquartered in New York's Waldorf-Astoria, the company is concerned with the management of all Hilton hotels throughout the world. (Hiltons in the U.S. are under the banner of an unrelated company, Hilton Hotels Corporation.) Hilton International is a subsidiary of Trans World Airlines.

But if Brother Bell has his way, Hilton International will be managing a new domestic chain of hotels—Vista International. The first is under construction at New York's World Trade Center. (Hilton International already manages the Center's famed Windows on the World restaurant plus 18 other food and beverage establishments in the complex.) A second Vista International is slated for Atlantic City and negotiations are taking place in some 8-10 key cities.

"Vista International hotels will have 400-700 rooms oriented to the individual traveler and smaller company meetings rather than large conventions. They will emphasize the high standards of personal service and attention to excellent food that characterize our 78 hotels in more than 50 countries," says Brother Bell.

Not that Hilton International intends to stop its growth abroad. Plans are in the works for five or six hotels in Central and South America plus almost a score of hotels in Europe, Africa, the Middle East and Far East.

Riding herd on Western Hemisphere operations for Hilton comes naturally to Bell. He studied, of course, in Cornell's famed School of Hotel Administration. Received his certificate in French from the University of Grenoble. And studied international business management at Harvard.

Bell has learned by doing as well. As food and beverage controller and then purchasing

agent at the Caribe Hilton in San Juan; as a food consultant for Harris, Kerr, Forster and as chief steward for the Hotel Plaza. He joined Hilton Hotels Corporation in 1957 and moved to Hilton International when it was later spun off as a separate corporation.

Want to know something about fine wines and food? You'd do well to ask Brother Bell, whose knowledge has been recognized by membership in the elite Confrerie des Chevaliers du Tastevin. ■

Alpha Pi

Jeff Dorton, Purdue '74, Mt. Vernon, OH, is grounds manager of campus and athletic grounds at Kenyon College in Gambier, OH.

Gordon A. Hess Jr., Purdue '63, Lakewood, OH, is employed by the U.S. Department of Justice in Cleveland.

Dr. Robert C. Lindemann, Purdue '71, Wilmington, NC, is a physician at New Hanover Memorial Hospital.

Wesley R. Maxted, Purdue '44, Germantown, TN, is a materials handling consultant.

Gary L. Montgomery, Purdue '74, New Castle, IN, is a civil engineer for the Soil Conservation Service. He invites Alpha Pi's passing through to call or visit.

Ed Moroff, Purdue '45, Metamora, MI, is vice president of construction for H. I. Campbell Company, international builders in Detroit.

Peter F. Murphy III, Purdue '69, Evansville, IN, is an accountant.

Thomas K. Nedved, Purdue '55, Fox Lake, IL, is manager for an engineering/laboratory section in Waukegan, IL.

Cy A. Schaadt, Purdue '69, Houston, TX, is a senior petroleum engineer for Mobil Oil in Houston.

William E. Smith, Purdue '48, Wheaton, IL, is manager of Kearney Management Consultants in Chicago.

Paul J. Valovich, Purdue '62, LeMoore, CA, is a naval aviator for the Flying Vought, an A-7E Corsair of the carrier USS America in the Mediterranean.

Alpha Tau

John R. Gibles, Stevens '42, Amelia Island, FL, is retired vice president and director of Lago Oil & Transport Company, an Exxon Corporation.

David R. Grouls, Stevens '61, Sylvania, OH, is plant manager of the grocery products division of the Purex Corporation.

Harold J. Heydt, Stevens '70, Idaho Falls, ID, is a research engineer in nuclear reactor safety.

John A. Lidstrom, Stevens '57, Stonington, CT, is a maintenance supervisor at Pfizer Inc. in Gorton, CT.

Alexander A. McKenzie, Stevens '59, Lexington, MA, works in consulting and research and development of computer networks.

Peter W. VanSeggern, Stevens '63, Florham Park, NJ, is a design draftsman for Automatic Switch Company in Florham Park and is a member of the First Aid Squad.

Alpha Chi

John H. Hoffman, Coe '71, Glenview, IL, serves as president of the Board of Trustees of

Morton Grove Community Presbyterian Church and is managing partner of an investment pool.

Robert J. Konschalc, Coe '69, Vineland, NJ, is production supervisor for Progresso Foods.

Alpha Psi

Joseph E. Britt, Presbyterian '75, Columbia, SC, is a youth counselor at a Juvenile Corrections Facility in Columbia.

Don T. Dunlap, Presbyterian '59, Pittsboro, NC, is in charge of data processing for the University of North Carolina at Chapel Hill.

Ted B. Freeman, Presbyterian '51, Conyers, GA, is director of the Division of Education Services at the Region IV office of Educational Programs D.H.E.W. in Georgia.

Alan R. McKie, Presbyterian '56, Springfield, VA, is an executive with the Federal Communications Commission and a sailing enthusiast.

John E. Smith III, Presbyterian '63, Monterey, CA, is a major and a student in an Italian language school. He and his wife will travel to Italy after his schooling to work in a military diplomatic post.

Beta Alpha

John H. Bennett, Mount Union '48, Nyack, NY, is a junior high school librarian at Clarkstown Central School District. He has written books on the history of Rockland County, NY.

The Rev. L. Edward Durbin, Mount Union '52, Chautauqua, NY, is a free lance writer, speaker and counselor in Jamesway, following 23 years as a Methodist clergyman.

Beta Beta

Robert A. Foster, M.I.T. '29, Concord, NH, has retired as a building contractor and construction engineer.

Beta Gamma

The Rev. Dr. Richard T. Herrington, Bethany '54, Lakewood, OH, is an associate regional minister of the Christian Church in Ohio (Disciples of Christ) in Cleveland.

Fred A. Johnson III, Bethany '72, Quakertown, PA, and his father own and operate two spring water companies in Lansdale, PA.

The Rev. Dr. George E. Owen, Bethany '29, Melbourne Beach, FL, is a retired clergyman and writer. Active in many church and community affairs, he is former assistant to the general minister and president of the Christian Church (Disciples of Christ) and executive chairman of the Division of General Departments of the United Christian Missionary Society.

Robert M. Whipkey, Bethany '68, Virginia Beach, VA, is a stock broker for Bache-Halsey-Stuart-Shields Incorporated.

Beta Epsilon

Ray E. Blake III, Lehigh '69, Bridgeport, WA, is office manager of Blake Construction Company.

Dan Breene, Lehigh '67, Foster City, FL, is a marketing manager for Equipment Leasing Company in San Francisco.

Theodore F. Gleichmann Jr., Lehigh '57, Florham Park, NJ, is a combustion engineer for Public Service Electric & Gas Company of Newark.

Clark D. Henley, Lehigh '66, Fairview Park, OH, works in investment banking and sales of



F. Brooks Cowgill, Stanford '50, has been elected Vice President and Treasurer of New England Mutual Life Insurance Co., Boston. Cowgill was HSP of the Stanford Chapter. "Alpha Sigma Phi was significant to me not only in the close personal friendships, but in the opportunity for leadership training for the future," he comments. Frank H. Cowgill, Standard '17, Sun City, Arizona, preceded his son as HSP of the Chapter.

fixed-income securities for Prescott, Ball & Turben.

Peter J. Merkle, Lehigh '59, Longwood, FL, is a separation and settlement director for the Florida Group of United Telephone.

Beta Zeta

Edward K. Lovelace, N.C. State '36, New Albany, IN, is president and chairman of the board of Roberts & Strack Veneer Company, Inc.

Beta Theta

A. Vincent Agovino Jr., Rutgers '72, Old Bridge, NJ, is a health officer for the Warren Township Health Department in Warren, NJ.

Benjamin Cheng, Rutgers '69, Mission Viejo, CA, is in medical sales.

Edwin J. Gailing, Rutgers '57, Goshen, NY, is a land planner and developer in Rock Hill, NY.

Ronald C. Geck, Rutgers '58, Danbury, CT, is business controls manager of the Dixie Manufacturing American Can Company.

Peter L. Ghiorse, Rutgers '65, Oradell, NJ, is vice president and general manager of the Wallkill Ford Automobile Agency.

David P. Higgins, Rutgers '62, Onalaska, WI, is associate professor of finance in the Department of Economics of Wisconsin at the University of Wisconsin.

C. Russell Kramer, Rutgers '31, Chatham, NJ, is a lawyer in Newark, NJ.

Joseph J. Kunigonis, Rutgers '71, Lodi, NJ, is a food broker sales representative.

Dr. James H. Letham, Rutgers '63, McKeesport, PA, practices optometry in McKeesport.

Nelson E. Wheaton Jr., Rutgers '31, Fort Lauderdale, FL, is retired.

Beta Iota

Edward W. Parks, Tufts '47, Middleboro, MA, is general manager at a chemical plant.

Beta Mu

Benjamin K. Ball, Wake Forest '75, Morehead City, NC, is a real estate broker with The Gallery of Homes.

Roger R. Buchanan, Wake Forest '76, N. Wilkesboro, NC, is a social worker for the N.C. Department of Human Resources for the blind in Ashe, Alleghany and Wilkes Counties.

J. Tyler Cox, Wake Forest '75, Winston-Salem, NC, received an award of excellence for his publication, *Around the Medical Center*, in the annual awards competition of the Newsletter Association of America.

Keith A. Kraner, Wake Forest '76, Hartford, CT, is an analyst trainee in the national accounts department of the Aetna Casualty and Surety Company.

Thomas A. Rozanski, Wake Forest '76, Cherry Hill, NJ, received the "American Defense Preparedness Award" from the Department of Military Science and was elected to Phi Beta Kappa at the 1979 Commencement Exercises of Wake Forest.

J. Taylor Ryan, Wake Forest '59, Franklin Lakes, NJ, is a senior marketing representative in IBM's General Systems Division in Lyndhurst, NJ.

Beta Xi

Charles D. Bang, Hartwick '72, Amhurst, MA, is vicar of Immanuel Lutheran Church.

Reginald J. Birks, Hartwick '68, Arlington, VA, is a furniture salesman at Bloomingdale's.

John E. Smith, Hartwick '61, Acra, NY, is vice president of the Bankers Trust Company of Albany.

Peter T. Storch, Hartwick '72, Burke, VA, is a data analyst for Ensco, Incorporated in Alexandria.

Robert Swift, Hartwick '59, Bartlett, TN, was selected as one of four teachers at Memphis State to receive the 1979 "Distinguished Teaching Award."

Beta Omicron

Dick Abram, Tri State '76, Ennis, TX, has moved to Ennis from Middlebury, IN, to start a window manufacturing firm, Able Enterprises.

Randy Babb, Tri State '70, Lawndale, CA, is a senior systems analyst in Torrance, CA.

Michael W. Barthell, Tri State '60, Ft. Wayne, IN, is president of Industrial Technology Inc.

Paul Brewer, Tri State '70, Ft. Wayne, IN, has worked for United Trucking Service since 1973.

Don Cerrato, Tri State '68, Bethlehem, PA, is associated with the Lehigh Agency of Franklin Life Insurance Company.

Paul Franklin, Tri State '68, North Plainfield, NJ, is in his eighth year as a sports reporter for the Courier News in Somerville, NJ.

Mike Galiyano, Tri State '67, Sinking Springs, PA, designs Egyptian coal and oil-fired power plants as an electrical engineer for Gilbert/Commonwealth Associates.

John Letki, Tri State '73, Spring Arbor, MI, is a structural engineer for nuclear power plants with Gilbert/Commonwealth Associates.

Bill Lewis, Tri State '60, Sinking Springs, PA, is director of social services for a children's home in Reading.

John Murray, Tri State '72, Valencia, PA, is a civil engineer.

Rick Paradise, Tri State '74, South Bend, IN, has worked as project engineer in electronic fuel controls for Bendix since 1975.

Gordon Pearce, Tri State '67, Lively, Ontario, has worked the past eight years for Canadian Alloys Division of Inco Ltd.

John Pelczar, Tri State '71, Livermore, CA, enjoys exploring the state in his motor home.

Robert F. Reiland, Tri State '43, Lake Park, FL, is a structural analyst for Pratt & Whitney Aircraft in West Palm Beach.

Ken Schamanek, Tri State '62, Albion, MI, is personnel manager for Hayes-Albion Corporation, a foundry with 1,400 employees.

Don Shaheen, Tri State '75, Portage, IN, works in design and inspection of steel structural work as an engineer-in-training with American Bridge Division of U.S. Steel.

Darryl Shoff, Tri State '67, Westlawn, PA, is a project manager for a contractor building sewage and processing plants.

Fred Sunday, Tri State '72, Pittsburgh, PA, has been employed by U.S. Steel since graduation.

Richard S. Thompson, Tri State '57, Augusta, GA, is a real estate broker in Augusta.

Richard Tietz, Tri State '75, Voorhees, NJ, is in the Oil & Gas Well Logging business, serving oil companies and working on rigs along the Gulf Coast.

Thomas C. Platt, editor of *The Tomahawk* in 1849 went on to play, as did many early Alpha Sigs, an important role in the history of the U.S.

Dr. Frank J. Krebs, Mt. Union '29, Grand Historian, responding to an article on early editors on the occasion of *The Tomahawk's* 70th year of continuous publication, shares this information:

Platt went on from Yale to serve in the House of Representatives from 1873-1877 and succeeded Roscoe Conkling as boss of the New York Republican Party. In that position, he was responsible for putting Theodore Roosevelt into the Vice Presidency, from which position Roosevelt moved into the Presidency in 1901 on the death of McKinley.

Platt was a U.S. Senator from 1897 to 1909. He had served in the Senate briefly in 1881 but when his mentor, Conkling quarreled with President Garfield over patronage, Platt followed Conkling in submitting his resignation. From that time he was "Me Too" Platt. In Teddy Roosevelt's days, Platt was known as "Easy Boss".

Those interested in more might read *The Rise of Theodore Roosevelt* by Edmund Morris.

Steve Whitesel, Tri State '70, Northlake, IL, is self-employed.

Beta Rho

Robert A. Alexander, Toledo '67, Alexandria, VA, is a territory sales manager.

John Myers, Toledo '61, Riverview, MI, is a safety administrator for Chrysler-Detroit Tank of Warren, MI.

Beta Sigma

Lt. Col. John B. Catiller, Cincinnati '56, Rueil-Malmaison, France, is an executive for Group Aerospace R & D in the area of avionics and electromagnetic wave propagation.

Peter T. P. Osborne, Cincinnati '56, Milford, OH, is a special agent in Southern Ohio for the Globe American Casualty Company.

Daniel W. Peake, Cincinnati '68, Cincinnati, OH, has been promoted to Ensign in the U.S. Navy after eight years of service. He soon will work as an environmental health officer after reassignment to Okinawa, Japan.

Beta Tau

Charles H. Dill Jr., Wayne State '50, West Branch, MI, retired from his former job after 46 years and now is an independent investor, real estate developer and stock investor.

John R. Gallagher, Wayne State '65, St. Thomas, Virgin Islands, is a partner in the certified public accounting firm of Brammer, Chasen & O'Connell.

Beta Chi

Steven G. Kashishian, American '76, Ridgefield, NJ, is a stockbroker in investment and banking for Phillips-Appel & Walden Incorporated of Wayne, NJ.

Beta Psi

Edward O. Hall, R.P.I. '63, St. Charles, IL, is a computer programmer/analyst for Western Electric in Naperville, IL.

Mark Kirst, R.P.I. '74, Vallejo, CA, is aboard a fast-attack nuclear-powered submarine with home port in Vallejo.

Gamma Alpha

James N. Lewis, Ohio Northern '61, Medina, OH, flies Boeing 727's out of the Cleveland Regional Office as a flight officer for United Airlines.

John O. Reed, Ohio Northern '48, Indianapolis, IN, is assistant director of placement at Ball State University.

(continued next page)



Robert W. Rahn, Illinois Tech DC Brown, Baldwin-Wallace
Gamma Gamma

David A. Korponai, Connecticut '63, La Paz, Bolivia, is finance and administrative assistant office manager of S. J. Groves and Sons, a Minneapolis construction company. He asks interested Alpha Sigs to contact him for business connections in Bolivia, Ecuador, Colombia and Brazil.

Gamma Delta

John L. Armitage, Davis & Elkins '57, Westerville, OH, is president of a real estate development in Westerville.

The Rev. Russell D. Burns, Davis & Elkins '49, Mt. Juliet, TN, is director of New Church Development for the Presbytery of Middle Tennessee. The father of four Eagle Scouts, he has served on the staff of the last two national Boy Scout jamborees and at Philmont Scout Ranch.

Robert A. Grote, Davis & Elkins '62, Laguna Niquel, CA, is president of a West Coast and Arizona computer dealer.

Edgar M. Schumann, Davis & Elkins '54, Poughkeepsie, NY, is senior programming manager for the IBM Corporation.

Earl J. Shaffer, Davis & Elkins '64, Tampa, FL, is a manager of the Benefit Consulting Division of Frank B. Hall Company.

Ronald W. Stevens, Davis & Elkins '69, Herndon, VA, is an engineer in anti-submarine warfare for the TRW Company.

Frank G. Taylor, Davis & Elkins '59, Charleston, SC, has been promoted to corporate secretary of the Public Savings Life Insurance Company.

Thomas J. Thoburn, Davis & Elkins '61, Frazer, PA, is a computer analyst for Consolidated Rail Corporation in Philadelphia.

John G. Townsend, Davis & Elkins '71, Kadena AB, Okinawa, Japan, is a navigator in the U.S. Air Force.

Peter E. Zelov, Davis & Elkins '77, Bryn Mawr, PA, worked during the summer as an assembly line worker making catalytic converters for Ford Motor Company.

Gamma Epsilon

Kenneth E. Bunge, Buffalo '66, Colorado Springs, CO, is an attorney and assistant professor of law at the U.S. Air Force Academy.

Jack D. Janese, Buffalo '68, Buffalo, NY, is a hairdresser in Eggertsville, NY, and teaches disco dancing.

Don Lever, Buffalo '50, Somerdale, NJ, sells

Savin Copiers in Haddonfield, NJ, as an account executive for Stewart Ind.

Edward Nelson, Buffalo '60, Hempstead, NY, is a merchandiser for corduroy textiles for Greenwood Mills in New York City.

Bruce W. Thiel, Buffalo '66, Foster City, CA, is personnel manager of Bechtel Corporation, a construction and engineering industry.

Gamma Zeta

Ronald L. Dielman, Bowling Green '66, Perrysburg, OH, is a supervising chemist in a SNG Reforming Plant.

Larry Philippi, Bowling Green '76, Bowling Green, OH, is working on his master's degree in student personnel and is a house parent at Bowling Green University. He is a former Chapter Consultant for the Fraternity.

Rodney J. Rupp, Bowling Green '70, Wauscon, OH, is a claims representative for an automobile owner's insurance company.

Clark E. Welch, Bowling Green '50, Albuquerque, NM, is secretary/treasurer of Implex, Inc. in Albuquerque.

Gamma Iota

Edward P. Austin, Arizona '55, Bremerton, WA, is a professional engineer for OICC Trident in Bremerton.

Hideki H. Tokuyama, Arizona '62, Camarillo, CA, is part owner of an insurance agency in Oxnard, CA.

Gamma Kappa

Leo D. Garlock, Michigan State '56, Cuyahoga Falls, OH, is a senior chemical engineer for the synthetic rubber division of Firestone Synthetic Rubber & Latex Co.

Gamma Mu

Allan I. Davis, Charleston '65, Newberry Springs, CA, is vice president of Twin Lake Recreational Resort Inc., a camping and fishing resort. He also is an accountant, president of the Southern California Fish Farmers Association, vice president of the Newberry Springs Water Association and a member of the National Association of Accountants.

Peter T. Goodwin, Charleston '67, Orange, CT, is a certified public accountant for Wiggin & Dana.

Gamma Xi

Frank P. Conroy, Widener '77, Cinnaminson, NJ, is a management trainee in the Consumer Credit Industry and hopes to be an international auditor.

Richard G. Cullin, Widener '71, Stroudsburg, PA, plans to continue teaching and coaching at East Stroudsburg Area High School.

John F. Horn, Widener '75, Colwyn, PA, is an auditor for Peat, Marwick, Mitchell and Company.

Ralph J. Treat, Widener '72, Philadelphia, PA, is administrative assistant to Pennsylvania Representative Ronald Donatucci.

Thomas F. Valent, Widener '65, Wallingford, PA, is a U.S. Postal Inspector with the Federal Law Enforcement & Investigation. He moved to the state after eight years in Alabama.

Gamma Omicron

W. Jackson Buckett Jr., Tulane '71, Paris, France, is a research engineer for Sciaky, S.A.

Robert H. Grizzard II, Tulane '66, Lakeland, FL, is an attorney at law in general practice.

"How can I replace my badge?" That was a frequent question on "Operation Information" forms coming back to Headquarters. Easy. Send your check for \$15.00 to Alpha Sigma Phi, 24 West William Street, Delaware, Ohio 43015, indicating your Chapter and initiation year. Badges are individually struck, so allow 6-8 weeks for delivery. Haven't sent in your "Operation Information" form? Do it now—it's in the last issue of *The Tomahawk*. Or ask Headquarters for another copy.



Gamma Pi

James J. Paule, Findlay '64, Bryan, OH, is a manager of transportation and distribution for the Spangler Candy Company in Bryan.

William S. Reber, Findlay '68, Tipp City, OH, is manager for a professional employment and recruiting firm in Dayton.

Gamma Rho

Douglas G. Brown, Lycoming '69, Steelton, PA, is district manager for Aetna Life in Harrisburg, PA.

Gamma Sigma

Graham Barton, Detroit '68, Livonia, MI, is executive vice president of First Oven Place in Rumulus, MI.

Gamma Upsilon

Stuart W. "Scooter" Anderson, Eastern Michigan '73, Dearborn, MI, was chairman of 1979 Homecoming/Alumni Day activities at Eastern Michigan University.

Robert G. Cabello, Eastern Michigan '70, Saginaw, MI, is assistant coordinator of residence life in Bloomington, IN.

Gamma Phi

Murriel R. Ferrel, Concord '74, Birch River, WV, is an insurance agent for People's Life in Montgomery.

Gamma Chi

John Cable, Indiana '67, Burbank, CA, is a district sales representative in South Gate, CA.

Ronald P. Fischer, Indiana '69, Cincinnati, OH, is a marketing manager for the General Systems Division of IBM Corporation.

Dan McCampbell, Indiana '75, Cincinnati, OH, is a sales manager for Shillito's Department Store in Western Woods Shopping Mall in Cincinnati.

Kent A. Rebman, Indiana '72, Austin, TX, is an administrative accounts specialist for the IBM Corporation.

Gamma Psi

Steven M. Chegash, Lawrence Tech '76, East Detroit, MI, is a computer programmer and analyst.

Delta Alpha

John K. O'Donnell, Loyola '68, Countyside, IL, is a stockbroker for Merrill-Lynch in Chicago.

Perry S. Smith Jr., Loyola '74, Chicago, IL, is a diagnostic ultrasound technician for Measurement Labs in Northbrook.

Delta Beta

Robert A. Gearhart, Northern Michigan '69, Phoenix, AZ, is in pharmaceutical sales.

Robert C. Roehrig, Northern Michigan '69, Fenton, MI, has been promoted to industrial arts department head for the Beecher School District in Flint, MI.

Delta Delta

H. Glenn Earhart, Slippery Rock '70, Baltimore, MD, is an ecologist in the U.S. Army Corps of Engineers in Baltimore.

Delta Epsilon

Herbert H. Holland Jr., Rio Grande '75, Columbus, OH, is a sales representative for Metropolitan Life in Lancaster.

Delta Zeta

Edwin B. Simpson, UNC Charlotte '78, Greenville, SC, is a management trainee and shift supervisor for Milliken (textiles).



ALPHA SIGMA PHI DIRECTORY

Founded at Yale College, December 6, 1845 by Louis Manigault, Stephen Ormsby Rhea and Horace Spangler Weiser. National Head-

GRAND COUNCIL

Richard A. Dexter (Oregon State '60) **Grand Senior President**, 729 Kimball Avenue, Westfield, New Jersey 07090

Richard R. Gibbs (Oklahoma '51) **Grand Junior President**, 1501 East Sixth, Tulsa, Oklahoma 74120

Louis DeLuca (Wagner '58) **Grand Secretary**, 524 Lamoka Avenue, Staten Island, New York 10312

Richard S. Sanders (Missouri Valley '62) **Grand Treasurer**, Merrill Lynch, Pierce, Fenner & Smith, 55 Public Square, Cleveland, Ohio 44113

Evin Varner (Presbyterian '58) **Grand Marshal**, Rt. #1, Box 44, Pineville, North Carolina 28134

Stan N. Miller (Purdue '64) **Grand Councilor**, 313 North Fifth, Lafayette, Indiana 47901

Peter L. Tourtellot (American '57) **Grand Councilor**, Box 21486, 335 Church Street, Greensboro, North Carolina 27420

LIVING PAST GRAND SENIOR PRESIDENTS

Lloyd S. Cochran , Pennsylvania '20	1948-52
Emmet B. Hayes , Stanford '31	1954-56
Charles T. Akre , Iowa '28	1956-60
Donald J. Hornberger , Ohio Wesleyan '25	1960-62
Raymond E. Glos , Illinois '22	1966-68
John L. Blackburn , Missouri Valley '49	1968-70
Robert E. Miller , Connecticut '49	1970-74
George B. Trubow , Michigan '53	1974-76
George E. Lord , Ohio Wesleyan '61	1976-78

ALPHA SIGMA PHI FRATERNITY

HEADQUARTERS

24 West William Street, Delaware, Ohio 43015

EXECUTIVE STAFF

Kevin J. Garvey (Westminster '75) **Executive Director**

Jeffrey R. Hoffman (North Carolina State '76)

Expansion Consultant

David L. Beckel (Ohio State University '76)

Chapter Consultant

Robert M. Sheehan, Jr. (Westminster '76)

Chapter Consultant

ADMINISTRATIVE STAFF

Carol G. Hallenberck, **Administrative Assistant**

Merilyn J. Sipes, **Comptroller**

Kathy A. Piatt, **Records Specialist**

EXECUTIVE SECRETARY EMERITUS

Ralph F. Burns (Ohio Wesleyan '32)

PROGRAM DIRECTORS

Stan N. Miller (Purdue '64) **Director of Alumni Relations** 313 North Fifth, Lafayette, Indiana 47901

Otto Sonder, Ph.D (American '47) **Director of Scholarship**, 52 West Street, Oneonta, New York 13820

quarters for the Fraternity "to better the man" is located at 24 West William Street, Delaware, Ohio 43015. (614) 363-1911.

G. Alan Sternbergh (Westminster '48)

Director of Career Development and

Placement, Westminster College,

New Wilmington, Pennsylvania 16142

Evin C. Varner (Presbyterian '58) **Director of**

Publications Rt. #1, Box 44, Pineville, North

Carolina 28134

GRAND HISTORIAN

Frank Krebs, Ph.D. (Mount Union '29) 1703

Edgewood Drive, Charleston, West Virginia

25302

MEMORIAL FUND TRUSTEES

Paul J. Cupp (Pennsylvania '21) 933

Muirfield Road, Bryn Mawr, Pennsylvania 19010

Richard R. Gibbs (Oklahoma '51), 1501 East

Sixth, Tulsa, Oklahoma 74120

Robert E. Miller (Connecticut '49),

Quinnebaug Valley Community College,

P. O. Box 449, Danielson, Connecticut 06239

TOMAHAWK FINANCE ADVISORY COMMITTEE

Norman Hadsell (Ohio Wesleyan '52)

McDonald & Company, 2100 Central National

Bank Building, Cleveland, Ohio 44114

Richard S. Sanders (Missouri Valley '62)

Merrill Lynch, Pierce, Fenner & Smith, 55

Public Square, Cleveland, Ohio 44113

Jack R. Staples (Ohio Wesleyan '31) Fulton-

Reid-Staples, 800 Penton Plaza, Cleveland,

Ohio 44114

A-S-P CORPORATION DIRECTORS

Richard A. Dexter (Oregon State '60) 729

Kimball Avenue, Westfield, New Jersey 07090

Richard S. Sanders (Missouri Valley '62)

Merrill Lynch, Pierce, Fenner & Smith, 55

Public Square, Cleveland, Ohio 44113

Alfred B. Wise (Baldwin-Wallace '43) 28

South Franklin, Delaware, Ohio 43015

NATIONAL PROVINCE PROGRAM COORDINATOR

James Hamner, 102 West Superior Court,

Fort Wayne, Indiana 46802

THE PROVINCES

Province I: Washington, Oregon State, Stanford

Province II: Iowa State, Coe, Oklahoma, Missouri Valley

Province III: Northern Michigan, Illinois Tech, Loyola, Illinois, Purdue, Indiana

Province IV: Tri-State, Toledo, Michigan, Eastern Michigan, Lawrence Tech

Province V: Findlay, Cincinnati, Baldwin-Wallace, Bowling Green, Ohio State, Ohio Northern

Province VI: Slippery Rock, Westminster, Bethany, Davis & Elkins, University of Charleston, Rio Grande, Marietta

Province VII: Concord, University of North Carolina at Charlotte, North Carolina State, Wake Forest, Presbyterian, Atlantic Christian

Province VIII: American, Lehigh, Pennsylvania, Rutgers, Stevens Tech, Wagner, Wiedener

Province IX: Tufts RPI, Hartwick, Cornell, Lycoming, Penn State

CHAPTERS

American University (Beta Chi 1940) Box 77, Eagle Station, American University, Washington, D. C. 20016

Atlantic Christian College (Gamma Lambda 1958) 902 West Gold, Wilson, North Carolina 27893

Baldwin-Wallace College (Alpha Mu 1929) 114 Maple Street, Berea, Ohio 44017

Bethany College (Beta Gamma 1919)

200 Point Breeze Drive, P. O. Box 398, Bethany College, Bethany, West Virginia 26032

Bowling Green State University (Gamma Zeta 1950) Fraternity Row, Bowling Green State University, Bowling Green, Ohio 43403

University of Charleston (Gamma Mu 1960) c/o Jim Buckalew, Athletic Department, University of Charleston, Charleston, West Virginia 25301

University of Cincinnati (Beta Sigma 1937) 136 Wentworth Avenue, Cincinnati, Ohio 45220

Coe College (Alpha Chi 1928) 1321 A

Avenue, N.E., Cedar Rapids, Iowa 52402

Concord College (Gamma Phi 1966) Box C-6, Concord College, Athens, West Virginia 24712

Cornell University (Iota 1909) 804 Stewart

Avenue, Rockledge, Ithaca, New York 14850

Davis & Elkins College (Gamma Delta 1949) Box 0, Davis & Elkins College, Elkins, West Virginia 26241

Eastern Michigan University (Gamma Upsilon 1948) P. O. Box 477, Ypsilanti, Michigan 48197

Findlay College (Gamma Pi 1964) 805 North Cory Street, Findlay, Ohio 45840

Hartwick College (Beta Xi 1935) 71 Spruce Street, Oneonta, New York 13820

University of Illinois (Eta 1908) 211 East Armory, Champaign, Illinois 61820

Illinois Institute of Technology (Alpha Xi 1939) 3361 South Wabash, Chicago, Illinois 60616

Indiana University (Gamma Chi 1968) 1415 North Jordan, Bloomington, Indiana 47401

Iowa State University (Phi 1920) 2717 West Street, Ames, Iowa 50010

Lawrence Institute of Technology (Gamma Psi 1933) 25131 Circle Drive, Southfield, Michigan 48075

Lehigh University (Beta Epsilon 1929) Building #106, Box F-2, Lehigh University, Bethlehem, Pennsylvania 18015

Loyola University (Delta Alpha 1968) 1062 West Columbia, Chicago, Illinois 60626

Lycoming College (Gamma Rho 1951) Williamsport, Pennsylvania 17701

(continued next page)



CHAPTERS

Marietta College (Delta 1860) 302 Sixth Street, Marietta, Ohio 45750

University of Michigan (Theta 1908) 920 Baldwin Avenue, Ann Arbor, Michigan 48104

Missouri Valley College (Alpha Omicron 1945) Box 73, Missouri Valley College, Marshall, Missouri 65340

North Carolina State University (Beta Zeta 1930) 10 Enterprise Drive, Raleigh, North Carolina 27607

University of North Carolina at Charlotte (Delta Zeta 1979) University of North Carolina at Charlotte Station, Cone University Center, Charlotte, North Carolina 28223

Northern Michigan University (Delta Beta 1969) Box 6, Northern Michigan University, Marquette, Michigan 49855

Ohio Northern University (Gamma Alpha 1942) Fraternity Circle, Ohio Northern University, Ada, Ohio 45810

Ohio State University (Zeta 1908) 81 East 15th Avenue, Columbus, Ohio 43201

University of Oklahoma (Alpha Alpha 1923) 500 College Drive, Norman, Oklahoma 73069

Oregon State University (Psi 1920) 410 N.W. 25th, Corvallis, Oregon 97330

University of Pennsylvania (Omicron 1914) 3824 Spruce Street, Philadelphia, Pennsylvania 19104

Pennsylvania State University (Upsilon 1918) 328 East Fairmount, State College, Pennsylvania 16801

Presbyterian College (Alpha Psi 1928) Box 1000, Presbyterian College, Clinton, South Carolina 29325

Purdue University (Alpha Pi 1939) 951 David Ross Road, West Lafayette, Indiana 47906

Rensselaer Polytechnic Institute (Beta Psi 1940) 31 Belle Avenue, Troy, New York 12180

Rio Grande College (Delta Epsilon 1972) Box 262, Rio Grande College, Rio Grande, Ohio 45674

Rutgers University (Beta Theta 1931) 106 College Avenue, New Brunswick, New Jersey 08903

Slippery Rock State College (Delta Delta 1970) 347 South Main Street, Slippery Rock State College, Slippery Rock, Pennsylvania 16057

Stanford University (Tau 1917) Box 5787, Stanford, California 94305

Stevens Institute of Technology (Alpha Tau 1926) 903 Castle Point Terrace, Hoboken, New Jersey 07030

University of Toledo (Beta Rho 1937) 1815 West Bancroft, Toledo, Ohio 43606

Tri State University (Beta Omicron 1935) 709 West Maumee, Angola, Indiana 46703

Wagner College (Alpha Sigma 1926) 631 Howard Avenue, Staten Island, New York 10301

Wake Forest University (Beta Mu 1932) Box 7291, Reynolda Station, Winston-Salem, North Carolina 27109

University of Washington (Mu 1912) 4554 19th Avenue, N.E. Seattle, Washington 98105

Westminster College (Alpha Nu 1939) 129 Waugh Avenue, New Wilmington, Pennsylvania 16142

Widener College (Gamma Xi 1962) Box 1200, Widener College, Chester, Pennsylvania 19013

COLONIES

East Carolina University (Nu Chi Colony) P. O. Box 3766, Greenville, North Carolina 27834

Tulane University (Gamma Omicron Colony) c/o Dave Engel, HSP, Box 469, University Center, Tulane University, New Orleans, Louisiana 70118

Radford University, (Delta Theta Colony) Box 5712, Radford, Virginia 24142

Omega Chapter

ALPHA M. Yeomans '29, Greenvale, NY; Dr. H. Seely '27, Roseburg, OH; **DELTA** R. E. Williams '39, Vero Beach, FL; A. J. Lockard '22, Miami, FL; B. C. Haught '27, W. Lafayette, IN; **EPSILON** Judge C. Dietrich '15, Ravenna, OH; E. M. Cole '16, New Philadelphia, OH; P. C. Davis '15, Mansfield, OH; **ZETA** J. L. Morrill '11, Columbus, OH; **ETA** C. K. Walbert '30, Tucson, AZ; C. C. McCune '39, Batavia, IL; R. D. Leigh '53, Albuquerque, NM; **THETA** J. Dresbach '21, Detroit, MI; R. T. Savage '25, Worthington, OH; G. Van Loan '25, Cincinnati, OH; **IOTA** J. F. Sturtevant '16, Atlanta, GA; P. A. Rucker, '77, Bethesda, MD; **KAPPA** W. J. Kahlenberg '26, Two Rivers, WI; C. A. Church '21, Sheridan, WY; **MU** M. D. McQuarrie '32, Bellevue, WA; **NU** O. J. Woodward II '27, Fresno, CA; **XI** R. S. Stauffer '27, Cheyenne, WY; **OMICRON** S. W. Carnwath '37, Warminster, PA; **SIGMA** O. Brown '19, Louisville, KY; **UPSILON** W. H. Aregood '20, Schuylkill Haven, PA; J. R. Kern '30, Bowmansville, PA; E. R. Snyder '35, Upper Darby, PA; **PHI** J. S. Quist '20, Ames, IA; **CHI** G. H. Earle '20, Hermansville, MI; W. C. Fenton, Jr. '30, Farmington Hills, MI; **PSI** G. C. Gray '26, Tacoma, WA; C. C. Fields '23, Roseburg, OR; C. A. Klink '40, Portland, OR; **ALPHA ALPHA** Dr. J. C. Berry '26, Norman, OK; L. Y. Roddie '27, Houston, TX; **ALPHA GAMMA** J. K. Myers '28, Pittsburgh, PA; **ALPHA DELTA** A. K. Sloper, Jr. '29, Wilton, CT; **ALPHA EPSILON** E. F. Barry '25, Missoula, MT; H. M. Merz '32, Lodi, NY; **ALPHA ETA** H. D. Newman '28, Fairlawn, NJ; **ALPHA OMICRON** M. B. Westhoff '47, Marshall, MO; **ALPHA PI** E. L. Phillips '48, Kent, OH; **ALPHA RHO** A. S. Kopf '26, Elizabeth, NJ; **ALPHA PHI** J. E. Clayton '39, Itasca, IL; E. J. Biever '39, Oak Park, IL; D. Conant '39, New Bern, NC; **ALPHA PSI** J. D. Mobley '33, Blackstock, SC; E. R. Cole, '49, Asheville, NC; **BETA EPSILON** C. H. Blankenship '30, Bethlehem, PA; **BETA ZETA** L. U. Bailey '44, New Market, VA; **BETA OMICRON** B. H. Cole '49, Somers, CT; **BETA PIA** R. K. Townsley '45, Robesonia, PA;

ALUMNI COUNCILS

Bay Area Alumni Council, T. P. Wadsworth, Bay Area Alumni Council, 1952 Los Angeles Avenue, Berkeley, California 94707

Chicago Alumni Council, Carl Moore, P. O. Box 2344, Chicago, Illinois 60690

Detroit Alumni Council, Stuart W. Anderson, 2180 Morley Avenue, Dearborn, Michigan 48124

Indy Alumni Council, c/o P. O. Box 44523, Indianapolis, Indiana 46244

Los Angeles Alumni Council, Robert Kutz, P. O. Box 1785, Chico, California 95927

Sacramento Alumni Council, Jim Cook, 6855 Antigua Way, Sacramento, California 95831

Greater Piedmont Alumni Council, Randall Campbell, 42193 Avenet Ferry Road, Raleigh, North Carolina 27606

The memory of brothers who enter Omega Chapter may be honored by contributions to the Alpha Sigma Phi Memorial Fund... gifts that live on by underwriting the scholarship and educational programs of Alpha Sigma Phi.

BETA RHO L. K. Nollenberger '39, Stony Ridge, OH; **BETA TAU** R. McClure '68, Redford, MI; **GAMMA ALPHA** A. A. Robinson '42, Ft. Lauderdale, FL; F. W. Florida '42, Newark, OH

Memorial Contributions

Gary A. Hood in memory of **Larry Weiss**; Henry A. Dietz in memory of **Carl L. Dietz** and **W. R. Augustine**; Mrs. Karen Frantz (sister-in-law) in honor of **Danny Frantz**; Roland V. Manning in honor of **Curtis L. Snyder**; Edward S. Gallagher in honor of **Henry G. Naisby**; Ralph D. Roehm in honor of **Neil F. Gillam**; T. P. Wadsworth in honor of **Myron C. Higby**; Floyd W. Mosiman in honor of **Myron C. Higby**; In memory of **Carl L. Dietz**, Nu '21, and **Waldemar R. Augustine**, Nu '22, by Henry A. Dietz, Nu '25; In memory of **Danny Lee Frantz**, **Gamma Alpha '69**, by Mrs. Karen Frantz, sister-in-law; In memory of **L. Curtis Snyder**, **Eta '25**, by Roland V. Manning, Eta '25; In memory of **Henry G. Naisby**, **Beta Epsilon '35**, by Edward S. Gallagher, Beta Epsilon '34; In memory of **Myron C. Higby**, **Tau '18**, by T. P. Wadsworth, Nu '17, and Floyd W. Mosiman, Tau '17; In memory of **O. J. Woodward**, Nu '27, by Charles D. Haseltine, Nu '27; In memory of **Bernard C. Haught**, **Delta '27**, by Stan N. Miller, Alpha Pi '64; In memory of **James B. Allen**, **Alpha Iota '30**, by Allan L. Francis, Alpha Iota '61.

Honored by gifts to the Memorial Fund were **Larry Weiss**, **Alpha Pi '73**, by Gary A. Hood, Alpha Pi '72; **Neal F. Gillam**, **Zeta '18**, by Ralph D. Roehm, Zeta '17.

Omega Notes

James Lewis Morrill, **Ohio State '11**, Columbus, Ohio. Former president of both University of Wyoming and University of Minnesota. Morrill Hall at the Marion Branch of OSU dedicated to him in 1977. Recipient of the Distinguished Merit Award of Alpha Sigma Phi in 1954.

THE TOMAHAWK

A publication of Alpha Sigma Phi

Fall 1979

Postmaster: Change of address form No. 3579 should be sent to Alpha Sigma Phi, 24 West William Street, Delaware, Ohio 43015.

Address corrections: Please help us keep our addresses up to date. If the man named on label is no longer in college and not at this address, please advise us. Please tell us about any spelling errors or other mistakes. When moving, notify Headquarters as far in advance as possible.