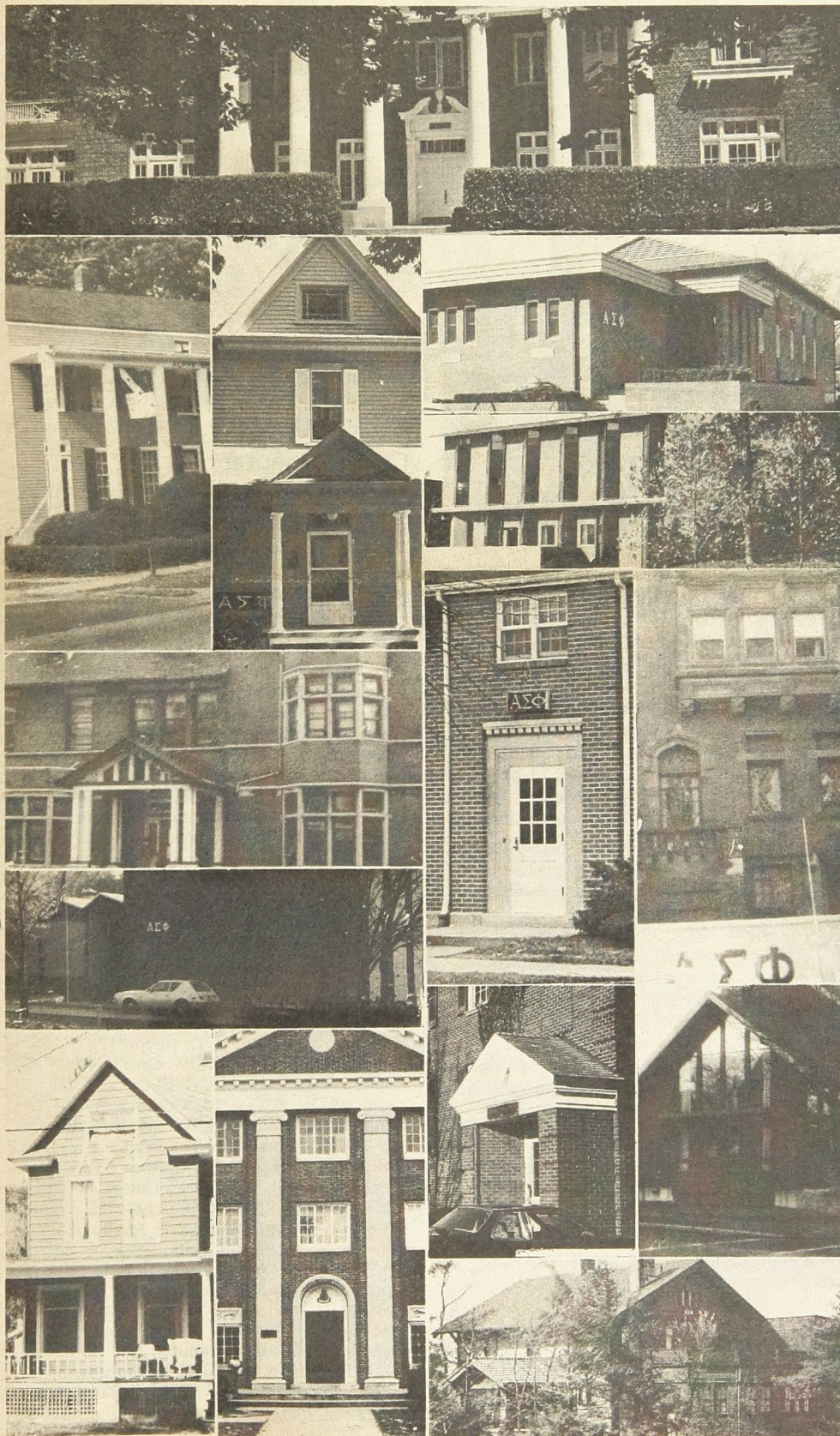


Summer 1979



The fraternity house: honored tradition nears a crossroads.

Some say \$20 million.

A lot more than that, say others.

The figure debated is the value of all Alpha Sigma Phi Chapter houses scattered across America. And no matter how you measure, it's a lot of real estate. And represents a lot of hard work by a lot of Alpha Sigs. And means home and meals for hundreds and hundreds of men.

Alpha Sig houses can be big, like Purdue's 81-man structure. Or Oregon State's 72-man house. Indiana will be home to 74 this fall. Washington houses 60 in its main building, another 20 in its annex.

Or they can be smaller, such as Westminster's 17-man house or American's 16-man structure.

Some are unique. Ohio State lives in an officially-designated historic home. Tri-State occupies an 1870 "heritage house". At Cornell, just ask for "Rockledge". Illinois has what was once America's largest fraternity house.

Many are old, having passed the 50, 75 or 85-year mark.

And all are the concern (or should be) of all undergrads and alumni regarding fire safety, proper insurance and liability coverage, and maintenance to keep the structures up to local code specifications.

For many Alpha Sigs, the "house" is what they say when they mean the Fraternity. But many others know that a building does not a brotherhood make.

Wake Forest took the Grand Senior President's Award as the Fraternity's outstanding Chapter to its home: a dorm section. Rio Grande bubbles with enthusiasm and excellent programming, minus a house. Presbyterian now has a lodge, the best accommodations in its 50-year history. Lycoming meets and parties in a dorm lounge.

Those "homeless" Chapters may be the wave of the future.

The enormous investment required isn't the only deterrent to the traditional fraternity house. Many campuses, faced with dark projections of enrollment drops in the next few

(continued next page)

On the inside

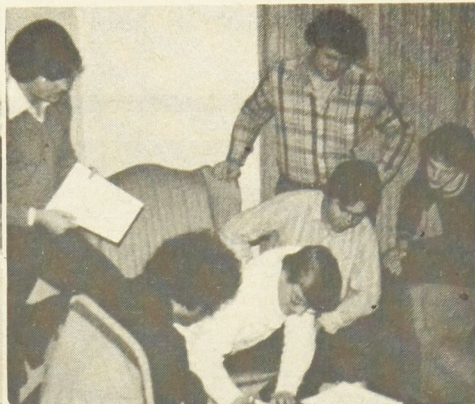
A new colony gains official recognition at Radford University. See **Page 2**.

Honor Roll . . . a salute to those who have taken part in Alpha Sigma Phi's annual Loyalty Fund. Is your name there? Starts on **Page 9**.

Chapter reports . . . here's what is happening on the undergraduate scene. Starts on **Page 3**.

"Alpha Sigs in Action"—our usual section on alumni news takes a break to provide room for Chapter reports. See the Fall issue for news of your brothers. And send in news about yourself (with a photo) today!

NBC-TV's "Today" show this spring featured the Phoenix mark as painted on the front of Westminster's Alpha Nu Chapter in a special report on fraternities. The coverage was positive in nature. You can help spread the good word by telling young people of the benefits of being a part of the Greek system. And by saying a good word about Alpha Sigma Phi, as well.



Upper right — Radford campus scene. Upper right — A Colony committee at work on rush plans. Lower left — Part of the Colony gathers to mark its recognition. Lower right — A building on the campus of this fast-growing Virginia university.

Radford Colony celebrates recognition

Within hours after officially becoming a Colony of Alpha Sigma Phi, members and friends of Delta Theta Colony at Radford University were busily washing cars.

The Virginia group quickly pressed Grand Marshal Evin Varner into service as manager of the cash box and handed Expansion Consultant Jeff Hoffman a sponge and hose. At the end of the day, the wet but enthusiastic group had another \$150.00 in the bank toward its chartering fee. Thanks to hard work and similar events, that particular goal is almost reached.

Radford, a fast-growing unit of the Virginia

university system, added male students a few years ago. A fledgling fraternity system has begun. Alpha Sigma Phi has been visiting the campus for some time. In December, 1978, Varner and Hoffman made a presentation to the University IFC and administrative officials.

After that Hoffman formed the group from scratch and has guided them with the help of Gamma Phi Chapter, Concord College and John Bone, Concord '76, of Blacksburg, Virginia, who has helped conduct pledge education classes. Faculty advisor Dr. George Papadatos has provided close supervision.

So four months later—May 4, 1979—a happy group achieved its first step toward becoming a Chapter of Alpha Sigma Phi and celebrated with a banquet and dance.

"The Alpha Sigma Phi experience teaches enthusiasm, responsibility, sharing . . . it strengthens a man in his own sense of dignity and worth . . . it teaches brotherhood," said Grand Marshal Varner in presenting the Colony designation to the group.

Special guests included a delegation from Gamma Phi Chapter; William Clapper, Missouri '57 and his wife from Vinton, Va. and Larry Graham, Concord '74, a graduate student at Radford.

Houses to change

years, are concerned about filling their dorms. And commuter students are starting to dominate many campuses—students who need social and meeting space but not living accommodations.

Oklahoma's Alpha Alpha Chapter alumni sensed the change and replaced an old traditional house with a new fraternity apartment house.

Jack Anson, executive director of the

National Interfraternity Conference, recently predicted:

"The chapter house will be a study center—linked electronically to the library—with video tape and other yet undiscovered facilities available. The house of the future will be smaller and specifically designed for its functions. The design will combine living, social and study activities in special areas incorporating privacy as well as community sharing."

All Chapters and Alumni Associations might do well to give thought to a new approach toward future housing needs, rather than aiming for today's standard which may become tomorrow's white elephant.

Returning at homecoming or Founders' Day to a lodge or dorm section or an apartment house or a small house with electronic study center may not sound so appealing.

Until you remember that Alpha Sigma Phi continues to make changes to meet the challenges it faces. But remains ever loyal to its unchanging principles. And that is what we all really go back to. Again and again. ■

Omega Chapter

Frederic Babcock, Xi '13, Winter Park, FL. Former travel editor of the Chicago Tribune and a former Pulitzer Prize fiction judge and author in his own right. Served Alpha Sigma Phi as Grand Corresponding Secretary.

Myron C. Higby, Tau '18, Los Angeles, CA. Delta Beta Xi '52. Past president of the Los Angeles Alumni Council. He composed the music for "The Tie of Alpha Sigma Phi."

Dr. Edwin W. Paxson, Beta Tau '38, Pacific Palisades, CA. A member of the Rand Corporation staff, he directed the firm's first systems analysis. He held the Presidential Certificate of Merit for service as a civilian scientist in World War II.

William E. Quirk, Psi '35, Rancho Santa Fe, CA. Former vice president of Pacific Telephone Co., he was named "Mr. San Diego of 1977" for his long, accumulative civic prominence.

Alpha: D. I. Knowles '23, Orlando, FL.; P. L. Raish '24, Akron, OH.; **Gamma:** J. J. Kelleher '14, Northampton, MA.; T. J. Oliver '29, Cocoa Beach, FL.; **Delta:** J. F. Thompson '53, New Matamoras, OH.; **Epsilon:** R. E. Boyer '22, Monroe, OH.; **Zeta:** J. W. Foster '24, Springfield, OH.; **Eta:** C. W. Garner '22, Macomb, IL.; **Theta:** H. C. Heym '17, Birmingham, MI.; **Iota:** H. W. Griffin '19, Rochelle Park, NJ.; **Mu:** C. E. Casady '15, Kent, WA.; W. K. Lee '13, Kirkland, WA.; A. L. Senn, Jr. '40, Redmond, WA.; **Xi:** A. R. Everett, MD '23, New York, NY.; **Omicron:** J. E. Swartz '30, Port Arthur, TX.; **Rho:** C. W. Herbison '25, St. Paul, MN.; **Tau:** N. M. Cross '32, Greeley, C.A.; W. C. Patchett '30, Walnut Creek, C.A. **Alpha Delta:** A. P. Papke, '25, Milwaukee, WI.; **Alpha Zeta:** Dr. R. F. Schappi '26, Yreka, CA.; **Alpha Theta:** J. F. Roberts '29, Norman, OK.; **Alpha Lambda:** E. J. Loeffler '39, Annandale, VA.; **Alpha Tau:** O. Biamonte '39, West Long Beach, NJ.; F. W. Schmitz '36, Livingston, NJ.; **Beta Gamma:** J. J. Rodgers '57, Coopertown, PA.; **Beta Upsilon:** A. D. Hayes '40, Madison, WI.; **Gamma Zeta:** R. W. Henry '50, Elyra, OH.

THE TOMAHAWK

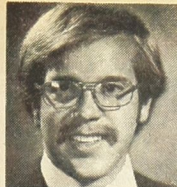
Vol. 77 No. 1
Summer 1979
Member, College Fraternity Editors Association

Editorial Office
P.O. Box 4351
Charlotte, N. Carolina 28204

The Tomahawk is the oldest college fraternity publication. It first appeared in November 1847 at Yale College and continued until the college suspended it in 1852. Since its revival in April 1909, it has been published continuously.

Editor Evin Varner	Business Manager Kevin Garvey
Editorial Assistant Carol Hallenbeck	Alumni News Tyler Cox
Circulation Kathy Piatt	Art Director Marty Washam

The Tomahawk is published quarterly by the Ellwood City Ledger, Ellwood City, Pa. U.S.A. for Alpha Sigma Phi Fraternity. Fifty cents a copy. Life subscription \$15.00. All remittances should be made payable to Alpha Sigma Phi Fraternity, 24 West William Street, Delaware, Ohio 43015. Second class postage paid at Delaware, Ohio, and at additional mailing offices.
Postmaster: Change of address form No. 3579 should be sent to Alpha Sigma Phi, 24 West William Street, Delaware, Ohio 43015.



Assisting in editing this section of Chapter reports was **Eric Jacobson**, young alumnus of **Theta Chapter**, University of Michigan. Jacobson, currently completing graduate work at the University of Illinois in Journalism, has volunteered to assist the Fraternity's publications program. □ If, by the way, you don't find your Chapter represented, please drop a note to the Chapter, letting them know of your disappointment. Numerous requests and phone calls went to every Chapter, requesting reports.

Undergraduate Chapters busily putting the Phoenix into flight

Undergraduates at the 1978 Convention declared 78-79 as the first year of flight for the Phoenix. It was a good year indeed.

The year saw Chapters doubling membership, renewing alumni programs, starting little sister programs, revitalizing newsletters, excelling in sports and scholarship, helping the community, acquiring homes or improving them and providing leadership for important IFC offices.

What a year!

Delta Marietta College

An improved rush program with emphasis on one-to-one resulted in 19 new pledges. Scholarship has gotten attention this year with a new study area, files and in-Chapter tutoring. Eight of the college's ten varsity sports featured Alpha Sigs

Delta's house received a lot of improvements during the year. And the tradition of the Black Lantern processional continued.

Zeta Ohio State University

Fun. And more fun. This year, undergraduates had a barnyard party, ski weekend, Parent's Day, a Sig-Bust, cookouts, canoe trip, Halloween party and a special Christmas dinner.

But the year wasn't all fun and games. The Chapter room got a fresh coat of paint and Zeta held a car wash in the parking lot at National Headquarters and earned \$50.

Two brothers, Kent Herreman and Kevin Young, made the Chapter composite. Their photography and layout produced professional results.

Zeta pledges organized a slave auction, selling Little Sister and pledge labor. And it worked well. Some brothers paid \$8.00 just for a car wash!

A proud Zeta sends best wishes to its Dave Beckel, now Chapter Consultant.

A new friendship with Zeta Tau Alpha, a visit from Indiana's pledges and Penn State Brothers and a "Wild West" saloon party, complete with ragtime piano and swinging doors, made this year one never to forget.

Eta University of Illinois

Eta's house is getting a facelift, a big one. Alumnus Jack Selig made possible new plumbing and wiring. Also new is trophy room furniture.

Undergraduates refinished all lower level hardwood floors and painted TV and party rooms plus the kitchen. Everybody worked—even Chapter Consultant Larry Philippi painted during his visit.

The 36 members enjoyed three dances and three dinner exchanges with nearby sororities. And Eta sponsored all-campus band parties that start at midnight. HSP Steven Molo (also 1979 Alpha Chi Omega Ax-Man) says they've been great publicity for the Chapter.

Something else new is a cash prize for the most improved scholar. Being considered is a rebate on room and board for B-averages or better!



The Fraternity's new Phoenix symbol goes onto new hockey jerseys at Beta Psi Chapter, Rensselaer Polytechnic Institute. The scores may not have improved thanks to the new shirts, but the design has certainly attracted the attention of opponents and spectators.

In sports, Eta placed fourth in intramural basketball.

Eta welcomed brother and former Illini football coach Ray Eliot as a special dinner speaker. He talked about togetherness and pride in athletics and Fraternity life. After that, the brothers were ready for the next rush weekend! It was a great year, but HSP Molo says next year is going to be even better.

Theta University of Michigan

A year of touching up prevailed at Theta. After recent major house repairs, the brothers added finishing touches by painting the living room, sun room and basement. The Alumni Association provided a long-needed fireplace screen. New living room carpet is the next goal.

Social life got a boost when Theta participated in nearly a dozen exchange dinners with campus sororities. Around Christmas, the Alpha Sigs went serenading and later invited the ladies of Alpha Omega Pi over to help trim the tree.

Theta brothers played intramural softball and football and won fourth place in the bed race during a lively Greek Week.

More than 200 alumni and their families joined the undergraduates at homecoming to celebrate Theta's 70th anniversary. And to see the Chapter's spotless kitchen—awarded the cleanest fraternity kitchen award at Michigan.

Golden retriever and mascot Rose celebrated her third year with the men of Theta.

Iota Cornell University

When Iota telephones its alumni, they answer! This year with an \$11,480 answer. That's how much alumni and undergrads collected during a phonathon. Over half of the 350 called donated to the fund that will go for improving and modernizing Rockledge's electrical system.

Social life included a foot stompin' square dance, a beach party, a King Tut party (with tomb!), a Parent's Weekend, a formal and the popular canoe trip.

The Chapter participated in softball, volleyball and bowling. New on the scene is the foosball table. Finances for the machine comes from the losing competitor!

This spring, the Alpha Sigs co-sponsored the first annual "Run for Hope" to benefit the American Cancer Society. Brothers did all the promotion and provided the organizational manpower for the 170-runner race.

As another service project, Iota and its Little Sisters hosted a park picnic for 22 underprivileged children. That wore everyone out!

"Iota Sig", the regularly published newsletter, keeps alumni informed about the Chapter and about alumni activities, too.

Mu University of Washington

Even with 102 undergraduates, Brotherhood is stronger than ever at Mu. This year 56 new men pledged this tightly united group.

The year saw a big brother/little brother pumpkin carving contest, quarter final competition in football plus keen teamwork during volleyball. Basketball, softball and wrestling were also on the schedule.

Alumni luncheons are back and Mu enjoys half a dozen exchanges—always based on a theme—with neighboring sororities each quarter.

Brotherhood builds at the annual retreat when the Chapter takes off for a weekend to iron out problems, set goals and voice ideas. Parties and a golf tourney follow the rap sessions.

Pledges sold magazines to raise money and later held a day-long Christmas party—complete with presents and Santa—for needy children.

Forty brothers doorbelled Seattle for the Mother's March of Dimes. Then, Mu and Alpha Phi sorority raised \$9,700 during the local Variety Club Dance Marathon. Mu also organized and hosted the "Gong Show" during Greek Week.

New this year were kitchen floors, carpeting throughout, color TV and basement remodeling. The Talisman Rose Formal highlighted

(continued next page)

winter quarter. The annual cruise on a double-decked boat down Lake Washington made spring quarter unforgettable.

Under HCS Mike Kennedy, the Chapter is creating three or four new scholarship awards. And "Musings", Chapter newsletter, has added new emphasis on alumni news. This summer brings a huge rush program directed by Tim O'Hara and Ted Davis. The goal is 25 men.

Mu's pride is overflowing. And it wants all of Alpha Sigma Phi to know!

Upsilon Pennsylvania State University

"... Once again the 'Old Gal' has regained her place as one of Penn State's finest fraternities," says Upsilon's Stephen Heisler. Upsilon is in the upper third in academics among all fraternities—quite a jump from its 54 out of 56 ranking two years ago.

The Chapter is eighth out of 60 in intramurals. Fine performances in football, track and softball earned the ranking. And it placed eighth with Alpha Gamma Delta in Spring Week Competition.

Socially Upsilon is doing so well that brothers have had to turn down many party invitations.

And structurally, this year brought new living room carpeting, a remodeled foyer, new speakers and sound system, renovated TV room, new showers and stairs plus a new stove. Alums provided some labor for the improvements. And 250 faithful alumni attended Upsilon's record-breaking homecoming weekend.

The Chapter's Little Sisters provided a memorable Parent's Day. Many thanks to the Chapter's new cook, Sylvia Miles, who prepared all the food for the day's picnic.

A new scholarship award goes to the best big brother/little brother team. Planned this summer is a visit to Psi Chapter.

Phi Iowa State University

When the men of Phi brought their eight-foot, 300-pound cannon onto Iowa State's football field years ago, they hoped it'd become an Alpha Sigma Phi tradition. Now, it's a university tradition! It gives Phi lots of good publicity, so the Chapter is hoping to start taking the cannon to away games as well.

More recognition came when Brother Todd Harris was elected IFC president. And when the Chapter won "Varieties"—an all-campus, three-night variety show.

Fund raising, including a raffle and a 24-hour teeter-totter marathon with Alpha Xi Delta kept Phi busy. The mayor and state officials came to watch the marathon.

More than 50 high school seniors visited the Chapter during Greek Week. Later, Phi pledged 19 men for the year. They're all great. And under the leadership of pledge class president Don McCarthy, they took top honors in homecoming banner competition.

The house of Phi looks good with new storm windows, siding and living room furniture plus a do-it-yourself patio for the backyard.

December's combined alumni and Founders' Day was a great success. *Chad was on it.*

Alumni are asked to send the Chapter names of high school seniors who would make good pledges. (Alum Dick Wiley has already sent in 10 names!) In talking to prospects, alumni can tell them Phi won three top awards in softball during the year.

Psi Oregon State University

Psi added 39 new men to their 64-strong Brotherhood this year, setting a Chapter record.

Winning the Grand Senior President's Award last summer prompted Psi to make this year even better than the last.

Starting off, the Chapter took second place in the Delta Gamma sorority volleyball tournament. Then claimed the league title in football. Next captured the B-League bowling crown. And finally placed sixth on the all-fraternity grade point average scale.

Psi invited alums back for a Founders' Day banquet in January. And regularly challenges alumni in basketball competition.

The Chapter lost its cook of 10 years. But the replacement Mrs. "O" soon had the Psi men claiming they're still the best fed.

Two freshmen brothers, Joe Ourada and Mark Ricoy, were tapped into Phi Eta Sigma, national honorary society for superior achievement by freshmen.

House improvements included new gutters, a kitchen cabinet, a TV room couch and a coat of paint for the entryway and stairwells.

Alpha Alpha University of Oklahoma

Alpha Alpha is busting its seams. Therefore the brothers are raising money to purchase another house in back of the one on College Drive. They need more room, especially for meetings and parties.

Alpha Nu Westminster College

A new "one-to-one" approach to rushing has produced tremendous results. Thirty-one men pledged Alpha Nu this year.

Other good news came when the Chapter won the over-all Greek Week competition. That for the eighth year in a row. For the third year, the Chapter hosted "Eat-a-thon for Epilepsy" where contestants collected from sponsors for each pancake they gobbled in 20 minutes. The Chapter again sponsored the Sig Olympics for eight sorority teams. Zeta Tau Alpha came up on top this year.

The regular Chapter newsletter has a new, bigger and fancier look. Another facelift happened when brothers painted the Phoenix on the front of the house. More paint and some wallpaper improved the inside.

With a tip from alumni Brother Henry Brenneman, the Chapter contacted Highland United Presbyterian Church and got 35, used but free, robes for the Chapter's ceremonies. Just in time for Alpha Nu's 40th birthday.

By next year, Alpha Nu hopes to have a new floor for the kitchen and dining room.

Alpha Xi Illinois Institute of Technology

The brothers of Alpha Xi are top-notch scholars and athletes. They took the intramural championship. And placed first in racquet

HE Manual: A special committee has been hard at work developing a new manual for Chapter treasurers and procedures for better Chapter financial management. Chaired by **Charles J. Vohs, Penn State '75**, the group includes **Maxson Greene, Ohio Wesleyan '30**, **Chauncey Forward, Ohio State '48**, and **Scott Soper, Rio Grande '73**. The task force is also working with Executive Director Kevin Garvey and Grand Treasurer Dick Sanders. The manual should be issued during the 79-80 year. (Like to get involved in similar projects? Contact Headquarters.)



Top — Two brothers stop to chat in a hallway of Alpha Pi, Purdue. Below — Phi Chapter, Iowa State, says this is their "absolutely fantastic championship softball team".

ball, handball and tennis. Earlier, the top ranking in the fall IFC scholarship competition really boosted the Chapter's pride.

Brother Jim McMahon, co-captain of the school swim team, is the new IFC president. Brother Brad Krygier is the new sports chairman.

The Chapter helped in a 50-hour dance marathon aiding the American Cancer Society. Randy Doliber and Dave Marshall were co-chairmen for the event, held in Chicago's Playboy Club. It raised over \$14,000.

Social highlights were an alumni smoker, a senior farewell party and an "Around the World" party featuring refreshments from various countries and served in different rooms in the house.

Alpha Xi replaced its stairwell roofs and will put up new fire doors this summer.

During February, the Chapter hosted Province III Conclave where brothers gathered to discuss social, scholarship and rush programs.

Alpha Pi Purdue University

Strong rush and pledge programs filled the house with 80 men.

The Parents' Club and the alumni made possible a new trophy case, new social room floor and the redecorating of the ladies room.

Alpha Pi won the fraternity intramural swimming championship, breaking another group's 10-year streak. The Chapter took part in the University Sing Contest.

Brothers helped Delta Gamma Sorority organize Purdue's first Anchor Splash, a Greek swim for charity that raised \$500 for United Way. It also got good newspaper and TV coverage.

The spring pledge class visited Eta. Later the undergrads hosted Halloween and Christmas parties for underprivileged children. But the special egg hunt for the kids at Easter topped all efforts.

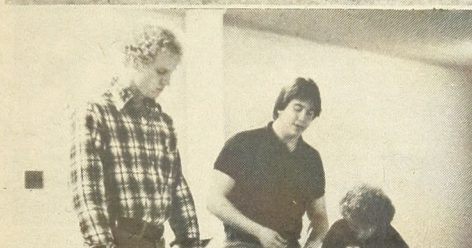
A senior roast, serenades, theme parties with 40 Little Sisters and the annual "Acce Shaker" with Alpha Chi Omega kept the brothers busy socially. So did the annual Black and White.



Mrs. Carol Hallenbeck, left, has joined Alpha Sigma Phi National Headquarters as administrative assistant. A Denison University graduate, she is a member of Alpha Phi sorority. Organist/choirmaster at St. Peter's Episcopal Church, she holds a music degree from Union Theological Seminary. Mrs. Kathy Piatt, right, is the Fraternity's new records specialist. A native of Ashley, Ohio, she is president and co-founder of the Fun & Fantasy Mothers' Club. In her spare time, she creates needlework crafts.



Above — Ohio Northern's football team has an Alpha Sigma Phi slant. Sixteen Gamma Alpha brothers and three pledges play while three alumni and two undergraduates help coach the varsity team. Athletic director Marv English is an Alpha Sigma Phi, too. Left — Brothers at Alpha Xi, IIT, conduct business at a Chapter meeting.



Alpha Sigma Wagner College

Brothers are rebuilding this historic Chapter. And winning the campus songfest and pledging seven men into the Brotherhood were highlights of the year.

**Alpha Tau
Stevens Institute of Technology**
Alpha Tau brothers said "hello" to many new renovations this year—a new front wall, new lofts and new living room carpet.

But they also said "goodbye" to the graduating brothers who worked so hard to revitalize and save the Chapter four years ago. They'll be missed!

Alpha Chi Coe College

Alpha Chi is moving. The college is tearing down its old house, the only fraternity house at Coe. But the new one should be just down the road.

If approved, the clever Alpha Chi's want to charge those who pass by 25 cents for sledge hammer hits as the old house is torn down.

Social events included exchanges with the AOPhi's, Tri-Delts and Chi O's. Other memorable events were a pledge formal and a spring formal.

Brothers' fathers came to a father/son banquet. And the Chapter sponsored the Special Olympics for the underprivileged children of Cedar Rapids.

Alpha Psi Presbyterian College

In its 50th year, Alpha Psi doubled its membership with two pledge classes totaling 23 men. Alumni donations boosted the \$1,700 rush budget.

The Chapter helped with the installation of Delta Zeta Chapter, and now is planning on taking part in a Province Conclave this fall.

An April Hawaiian holiday party for alumni and undergraduates, a homecoming car wash and fourth place in the homecoming float competition highlight the year at Presbyterian.

Beta Gamma Bethany College

Beta Gamma has just finished the first half of its 50th anniversary celebration with a spring cookout and a rowdy alumni vs undergraduate football game. A gala celebration is planned for the fall. Alumni will be receiving more information.

The Chapter has started a "50 for the 50th" drive that will spruce up the house for the celebration. Projects underway include rewiring of the entire house, fire escapes installed, walls replastered and all new lighting for the first floor.

A hand-delivered letter to neighbors made for good relations. The letter told neighbors who to contact if they ever have any complaints or problems.

Beta Epsilon Lehigh University

"Everyone knew we took our partying seriously. Now they know we feel the same about our studies." That's what Jeffrey Slayton reports, reflecting on the Chapter's number two academic ranking among 33 fraternities at Lehigh.

Beta Epsilon takes its sports seriously, too. Brothers competed in hockey, boxing and varsity baseball. And the Chapter had two baseball and two softball teams.

A visit from a Susquehanna University sorority, days of donating blood, 10 pledges, a remodeled living room and fifth place in fall's track relays all made the year special at Beta Epsilon.

A first in several years for Lehigh's Alpha Sigs came when they hosted the Province VIII Conclave.

And Kandy, the new purebred female golden retriever mascot, is sure to be a hit next year—the Chapter's golden anniversary.

Beta Zeta North Carolina State University

"Beta Zeta is one of the fastest growing fraternities on campus." Two excellent pledge classes, bringing membership from 17 a year ago to 38 now, is proof.

Beta Zeta packed its first year as a Chapter full of activities. Brothers visited Upsilon

Chapter and helped in the chartering of Delta Zeta.

Two professors were sponsored by the Chapter in a three-mile charity race. And two parties with Nu Chi Colony at East Carolina University spotlighted the social calendar.

Brothers donated blood and collected 412 pounds of canned food in the IFC food drive. Fall pledges raised \$93 in a raffle. And the Chapter took first place in the Muscular Dystrophy Dance-a-thon. The year saw a Talisman Rose Banquet, 15 new Little Sisters and a festive Christmas dinner. Robert Crews was honored as outstanding brother of the year.

Already the Chapter is looking ahead. The Greater Piedmont Alpha Sigma Phi Alumni Association met for the first time in April. More meetings are sure to come. Next year's rush calendar is final and the alumni address file is getting an update.

Beta Theta Rutgers University

Alumni turnout is overwhelming at Beta Theta. More than 100 alumni brothers attended a weekend party. And many returned again for the social highlight of the year, the "Mili Ball."

Under Social Chairman Dave Ripple, the Chapter's had some fun and unique parties. Including its latest claim to fame, an "Iced Tea Party."

Beta Mu Wake Forest University

The 1978-79 year was one of firsts for Beta Mu—a first in the IFC Green Week Sing and a first in campus-wide bowling.

Another was the Chapter's first Alumni Day. And what a success. One hundred alumni, wives, dates and friends enjoyed the banquet. And later danced the Charleston and the Fox Trot.

A homecoming dance, a wine and cheese party and a beach party (with six inches of sand on the dance floor) kept the undergrads socially fit. The beautiful Talisman Ball found all dates wearing roses.

The Little Sister program got a boost. Now there are 15 members.

Two brothers are studying in London this year. Another, Tom Rozanski, was named to Phi Beta Kappa.

The Chapter's music room had been completely redesigned. The spring pledge class repainted the lounge and the fall class painted lines in a church parking lot.

Again a first is the Chapter's "10 for 10" program. Graduating seniors donate \$10 every year for 10 years after graduation.

Beta Omicron Tri State University

It's hot in the Beta Omicron Chapter house. Eight inches of insulation on the roof and in the lower apartments now keep the heat in and the electrical bill down.

Alumni financed a new water heater and a new water line to the main house. The fall pledge class installed new gutters and added a fresh coat of paint.

Nine new pledges and undergraduate

(continued next page)

Chapter reports

Fraternity and Sorority editors from across the country have elected Evin Varner, *Tomahawk* editor, as secretary of the College Fraternity Editors Association. He was also chosen program chairman for the 1980 CFEA workshop. Varner had previously served on the organization's board. The election took place at the annual

meeting in late June in St. Petersburg, Fla. Following CFEA's meeting at the same site was the annual meeting of the Fraternity Executives Association where Executive Director Kevin Garvey represented Alpha Sigma Phi. Attending the FEA expansion workshop at the same time was Chapter Consultant Rob Sheehan.



brothers fielded football and baseball teams. No championships came this year. But Beta Omicron's teams nevertheless fought hard.

Alumni generously donated \$2,000 at the annual Spring Frolic. Earlier, alums returned for the Chapter's Christmas party, where three huge birds were stuffed and cooked. This time, leftovers lasted until Christmas vacation.

Beta Rho **University of Toledo**

Toledo's Alpha Sigs are number one in intramural sports. For the 18th time in 19 years, Beta Rho won the Intramural All-Sports Trophy by placing first in most of 13 different sporting events.

And then they added a second place in the academic and social services division, too!

Other highlights included a hay ride, a homecoming float party, a brewery trip, a taco & tequila party and the popular boggie-down disco dance.

Brothers have a goal to get more involved in student affairs. Well, they're already on their way. The University Senate has three Alpha Sigs and Jeff Hill is the new IFC president.

Brother Jeff Schwind got a special award this year. He was named outstanding Greek Man at Toledo.

Right now, the 45 brothers and 17 pledges are looking for a new house.

Beta Sigma **University of Cincinnati**

Reorganizing efforts are keeping Beta Sigma men busy. So is planning for fall's rush and repairing the house for that. The Chapter has its sights set on filling the house with new pledges.

Beta Chi **American University**

Beta Chi's Little Sister program is a first for the Chapter and for the American University campus as well.

This year the Chapter improved its rushing and pledging programs. The new approach stresses brotherhood and National and Chapter histories. It's worked quite well.

Beta Psi **Rensselaer Polytechnic Institute**

Hockey and sky diving are big at Beta Psi. The Chapter fielded three hockey teams and regularly plays its alumni in hockey. This year the score was tied 2-2. The Fraternity's new Phoenix symbol flies across the Chapter's new Phoenix jersey. The B-League captured the intramural title and the other teams placed fourth and eighth. Last fall, 11 Beta Psi men took to the air and spent a day sky diving.

On campus, Kevin Lansing got a Navy ROTC scholarship and Ken Ryan is cartoonist for the campus paper.

Forty-seven alumni returned for the Alumni Banquet. Also on the social scene were three new parties: a "Funky T-Shirt" party; the "World Series Get Together" and a hat party.

Beta Psi's 36 brothers out-called all other fraternities during the RPI alumni phonathon to raise \$3000. The Chapter featured the Alpha Sigma Phi Ladder Climb in the IFC Carnival and entered a five-member team in the campus version of "Family Feud"—"Fraternity Feud." These and other activities got the Chapter and

the brothers on TV not once, but three times.

And perhaps you saw the banner that Seven Beta Psi's took to a Mets baseball game in New York. It said, "Alpha Sigma Phi Loves The Mets."

Gamma Alpha **Ohio Northern University**

Three significant events made this year special. The Alumni Corporation issued its first newsletter. The Chapter won intramural flashball. And brothers placed first in volleyball.

Gamma Delta **Davis & Elkins College**

"Seven is Gamma Delta's lucky number! This year, seven men pledged the Chapter. And seven women were initiated into Gamma Delta's new Little Sisters program.

Soon there will be a lot of muscle flexing at Davis & Elkins. The Chapter is organizing a strongest man on campus contest for charity.

The super Little Sisters and a terrific social calendar made the Chapter's 30th year "... the best of the last five years," reports Brother Mitchel Bernstein.

Gamma Zeta **Bowling Green State University**

This year, Gamma Zeta topped all campus charity events. By selling raffle tickets with Alpha Phi sorority for a trip to Florida, \$2000 was raised. Enough money for Wood County Hospital to buy a heart machine. McDonald's paid for the ticket printing and area merchants donated additional prizes.

Gamma Zeta also won a local blood drive, and with a 5-1 record, placed second in intramural basketball.

A special honor—the Sigma Chi Mitch Weitzman Memorial Award (for high morals, personal responsibility, leadership and scholarship) went to Brother Jamie McCloskey.

Chapter officers held a retreat at Headquarters with Executive Director Kevin Garvey coordinating.

Little Sisters organized a toga party. The annual Sig Bust occurred at a KOA campground. And the Alpha Sigs held the first annual Mock Wedding on campus. Seniors chose the groom and the groom picked his "wife" for the day.

Alums received special treatment at Alumni Day in May. For them, the undergrads reserved the new campus recreation center for the entire day. Alumni did everything—basketball, tennis, handball, ping-pong, swimming, running and much more.

Gamma Lambda **Atlantic Christian College**

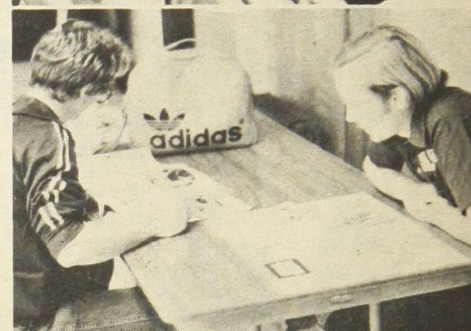
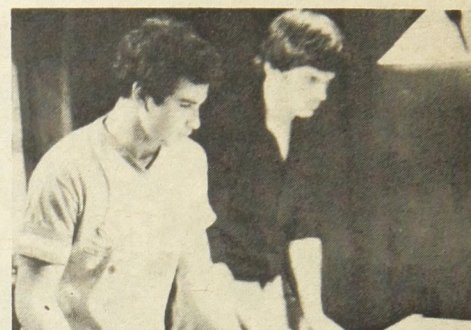
Gamma Lambda has been busy helping others. This time, helping the Colony at East Carolina University. The Chapter had some good parties with the Colony as well.

An 11-man pledge class in the fall and a series of excellent service projects also highlighted the year.

Gamma Mu **University of Charleston**

Morris Harvey College has a new name—it's the University of Charleston now.

And other new things are underfoot. Gamma Mu is reorganizing with the help of alumnus Jim Buckalew. And the Chapter is intent



Top — Delta Alpha brothers, Loyola, give the Chapter's football table a workout. Below — A study break at Beta Xi Chapter, Hartwick.

on recapturing the kind of status it had when it was the largest Chapter in the country. There is hope for new life in the entire fraternity system on the campus.

Gamma Xi **Widener College**

What do volleyball, table tennis, checkers, backgammon, flash bowling, and pinochle have in common? All first place awards for Gamma Xi Chapter, that's what!

Thanks to those top-flight rankings, the Chapter placed second in Greek Week competition. Brothers also won the tug-of-war, which Tau Kappa Epsilon had dominated since 1961!

As service projects, brothers painted a room in the Chester (Pa.) Art Museum. Then provided an escort service seven nights a week for campus women. And later held a special Halloween party for hospitalized children.

Highlighting the social calendar was a beach party with 12 inches of sand on the floor, two formals and a luncheon with Philadelphia 76er owner, Brother Fitz Dixon.

Pledging 20 new men was another significant event. Right now, Gamma Xi's two goals are to strengthen its alumni support and to find a new house.

Gamma Omicron **Tulane University**

Gamma Omicron is house-shopping. For now, an apartment is the focal point for this spirited group.

The men of Gamma Omicron were active in softball and soccer. In April, they hosted their first annual Sig Bust for alumni and undergraduates.

Five new Little Sisters helped brothers enjoy seven parties, including a superb Halloween celebration. Pint by pint, brothers donated blood during a campus drive.

Alumni groups forming: Alumni of Alpha Psi Chapter, Presbyterian College, are working on a new Alumni Association. For information contact Randon H. Jackson, Associate Minister, First Presbyterian Church, 209 West Coffee Street, Greenville, South Carolina 29601. Brothers in the North Carolina Piedmont have formed the Greater Piedmont Alumni Council. For information, write Randall Campbell, president, at 4219-3 Aventura Rd., Raleigh, N. C. 27606.



Top left — Zeta Chapter, Ohio State, uses National Headquarters parking lot for a car wash to benefit the Chapter treasury. Top center — intramural action at Alpha Tau, Stevens. Top right — resting and watching TV after the game in the Alpha Tau house. Above — Action in the game room at Davis & Elkins.

At homecoming, Gamma Omicron had its own special popcorn booth. And for upcoming rush, the group has put a special section about the Alpha Sigs in the IFC rush booklet. Also, every brother is contacting incoming freshmen from their hometowns.

Gamma Pi Findlay College

Like many Chapters this year, Gamma Pi doubled its membership. Eleven super pledges made it possible. And the Chapter is poised for even greater things this coming year.

Gamma Rho Lycoming College

Thirty brothers and five new pledges worked hard to move Alpha Sigma Phi to the number two slot academically at Lycoming. It wasn't easy!

The Spring Weekend for alumni went well. Welcome additions were new paint and furniture for the library and a new stereo, purchased through a loan from the national Fraternity.

Gamma Upsilon Eastern Michigan University

Tradition is back at Gamma Upsilon. Once again, formal initiations begin with a black lantern procession. It's quite an impressive sight for the candidates waiting in their dorms.

The Chapter has sold its house and hopes to find a less expensive one by September. Meanwhile, Gamma Upsilon extends a warm invitation to alumni to become more involved in Chapter functions.

Brother Joe Fisher is the new liaison officer to Grand Chapter Advisor Stuart Anderson. "The Items", Chapter newsletter, is currently celebrating its 30th year.

Gamma Phi Concord College

Two top rankings make Gamma Phi well known on campus. It has the highest fraternity grade point average. And second place in overall intramurals.

That reputation grew when brothers placed second in both the campus-wide College Bowl Tourney and the Greek Games. Also when the Chapter's Little Sister president was crowned 1979 Homecoming Queen.

Brothers collected \$364 for the March of Dimes in only one day. More recently, they entered Little Sister Marsha Garvin in the Alpha Sigma Phi National Sweetheart Competition.

Alumni brothers attended the traditional wine party and homecoming festivities. That fun-filled weekend ended with a special Sunday breakfast for alumni and undergraduates.

The Chapter's newsletter has a new format. Now it looks like a personal letter to alumni, filled with news. This informal touch works well reports Sam Baker.

This year, Gamma Phi had the exciting opportunity of working with the new Delta Theta Colony at Radford University.

Gamma Chi Indiana University

"I.U.—Show us your tan!" the posters read. And after the spring break, many had tans to show. Gamma Chi co-sponsored the event with a sorority at a local disco. The turnout was great. The \$1.00 cover charge was donated to the Red Cross. Judges selected the most even tan, darkest tan and most contrast!

In addition to its scholarship banquets held every semester, the Chapter has arranged for its faculty advisor to be available for counseling on both academic and personal concerns.

A big pig roast, shared with two nearby sororities and a neighboring fraternity, was a great success. It was held at the Gamma Chi house with the other fraternity bringing their tables and chairs and providing the beverages. The pork cooked all day. The sororities brought salads and desserts. Everyone helped—even with the clean-up. And then moved out the tables for dancing.

Hosting National Education Conference has been the big news this year at Gamma Chi. Along with new dining room furniture, thanks to the alumni. And carpeting, thanks to the Parents' Club.

The Chapter publishes a newsletter—and so does its alumni association. Alums play a big role in Gamma Chi's success, even contacting area high schools, seeking potential pledges. Prompt mailing of information about Alpha Sigma Phi meant record numbers of high school seniors visiting the Chapter . . . and a

great pledge class ready to start this fall.

Another edition of the alumni directory is planned. Chi Omega Sue Meredith was the Chapter's representative in the Fraternity sweetheart contest. Little Sisters held a fund-raising Sunday Chili dinner and went with the brothers to visit Eta Chapter.

Gamma Psi Lawrence Institute of Technology

Making friends dominated Gamma Psi's year, fulfilling a goal to develop good relationships with the other fraternities on campus.

Community service was also important. Christmas toys for needy children around Detroit were collected. And newspapers were piled up in a long-term paper drive.

To raise money, the brothers sold raffle tickets for prizes, including a TV. The Chapter became \$400 richer for it.

Alumni came back to see the new house which has served well for many enjoyable theme parties. Especially for a disco dance and a picnic with Delta Tau Sigma sorority. Greek Week rivalry saw a third place for the Alpha Sigs. The Chapter is starting a Little Sisters program.

The summer brings a pool party and a trip to a local amusement park. Finally, a big "thank you" for all the alumni donations during the year.

Delta Alpha Loyola University

This has been a year of painting, repairing and cleaning up all over the house at Delta Alpha . . . with sights set on a record-breaking year in 79-80.

Delta Beta Northern Michigan University

The Phoenix certainly took flight this year with membership doubling with the addition of 18 new men.

Marquette's Ramada Inn may have thought it was being invaded by a flock of penguins in last spring. It was just 100 Alpha Sigs, undergrads and alumni, decked in tuxedos. The Black and White dinner and dance was the highlight of this year's 10th anniversary. Alumni Brother John Showerman, the Chapter's first president, gave a speech that enlightened all on the Chapter's history. In this year of growth, Delta Beta fielded teams in basketball, football and broomball. Brothers helped handicapped children ride horses and also aided handicapped adults in bowling.

One brother is vice president of the student government; another is treasurer of the IFC.

After this fantastic year, the Delta Beta men are certainly proud Alpha Sigs.

(continued next page)

Volunteers needed: Alumni who can give a few hours of their time are being particularly sought for Province work in **Province IV (Michigan)** and **Province V (Ohio)**. Volunteers are welcomed to help with the regional organization of Alpha Sigma Phi across the country. For more information, contact Executive Director Kevin Garvey, Alpha Sigma Phi, 24 West William Street, Delaware, Ohio 43015. You can make a difference!



Delta Delta
Slippery Rock State College
Rejoice for Delta Delta has a new house.

Watch the purse strings, however, because that means money is tight.

But it hasn't kept the Chapter from having a great social program through the year that has kept spirits high.

Delta Epsilon
Rio Grande College
Alpha Sigma Phi has a great reputation on campus and in the community, thanks to the dedicate efforts of 34 undergraduates.

Good publicity came from a 140-hour see-saw marathon that raised \$1,000 for the March of Dimes. Also when pledges held a Valentine party for children of the Guiding Hands School. Brothers take deaf and mentally disturbed youngsters swimming and bowling each week. The children's school awarded Delta Epsilon with a plaque.

Some brothers suggested that the Valley of Rio needed some new street signs and volunteered to put them up. Coincidentally, the sign colors are red and grey!

Even the Chapter's basketball backboard has the Fraternity's crest on it. As a fundraiser, the Chapter held an appointment-only car wash. Ten dollars got a wash and wax, inside and out. Some customers paid up to \$20 for the good work.

Headquarters got a good cleaning, thanks to the efforts of Delta Epsilon pledges who volunteered for the job when they visited the Delaware office on their "Disappearance Day". A new service project was a 100-hour charity ping-pong marathon.

Tradition abounds when the Chapter holds its Black Lantern Processional. For Pinnacle Week, brothers wear Fraternity shirts and ties all week long.

For the first time in years, the Chapter won the Greek Week events during May Week 1979. At the annual May Day celebration, Mark Smeltzer was selected "super pledge" and Pete Bopp was named "Sig of the Year." Pledge Jeff Kenner was awarded the Rhoades Scholarship. And alumnus Dr. Spees presented two cash awards for super scholastic performance. Frank Gregory is the new IFC president and Tim Saunders is the IFC secretary.



Delta Zeta
University of North Carolina at Charlotte
Two hard-earned awards—the IFC Scholastic Award and the Chi Phi Sportsmanship Award—ended the year perfectly.

But the biggest event was on March 3 when Delta Zeta gained Chapter status.

Actives spent a weekend at the home of Evin Varner, director of publications. Expansion Consultant Jeff Hoffman conducted an organizational workshop for the Chapter.

For sorority women on campus, Delta Zeta provided exam survival kits: bags of candy and goodies. The Chapter took fourth place in volleyball and first in table tennis. It fielded basketball and softball teams as well. The social agenda included a successful Founders' Day, a formal and a special party, thanks to a brother who won the refreshments through a radio station contest. Some crazies in the group even went sky-diving.

Rush plans for the year are now set. Information letters will welcome incoming freshmen and brothers will be holding rush orientation programs.

Delta Theta Colony
Radford University
The Phoenix has landed in Virginia. On March 12, the Colony gained official recognition and started on its path toward



Top — Upsilon, Penn State, celebrated homecoming with a very successful "grease" dance. Alumni loved it! At left — A N.C. State professor, sponsored by Beta Zeta Chapter, nears the finish line in a special charity race. Above — Eta Chapter, Illinois, welcomes back a special Alpha Sig speaker. (See Chapter report.)

becoming the first Alpha Sigma Phi Chapter in Virginia.

Campus Greeks, independents and brothers from Concord helped celebrate.

Already the enthusiastic men have won a prize for donating the most blood in a campus drive. With rousing car washes, the group has earned its chartering fees. But that's not all, they work as community Big Brothers and often help area elderly. On campus, the men of Delta Theta took charge of Greek Games during Greek Week.

At their special pace, Alpha Sigma Phi should soon be making history at Radford.

Nu Chi Colony
East Carolina University
Highlight of the year was receiving official recognition as a Colony of Alpha Sigma Phi. Now the drive is on to achieve Chapter status.

It was a year of hard work and a lot of fun with intramurals, IFC work, campus and community service projects plus a lot of good social events.

The Colony said farewell to its "father" Ben Ball who graduated.

Alpha Sigma Phi salutes those who give the gift of brotherhood

This and the next three pages of this issue represents a very special "thank you" note from Alpha Sigma Phi.

For listed here are the almost 1,800 brothers who have given the gift of brotherhood with their contributions to the Fraternity.

Those who respond to the annual Loyalty Fund of Alpha Sigma Phi perform a vital service—their gifts represent 17% of the dollars spent by the Fraternity on behalf of its Chapters and various membership benefits.

Without these gifts, Alpha Sigma Phi would

not be able to continue to expand, revive Chapters, publish *The Tomahawk* or offer its scholarship incentive programs.

This listing recognizes contributions on a cumulative basis beginning with 1977 gifts. It includes gifts to the Memorial Fund and the Ralph F. Burns Foundation as well as those vital contributors to the general operating funds of the Fraternity.

Those whose cumulative gifts have reached \$1000 or more are named members of the Founders' Club. Other giving levels are: Cardinal & Stone Club (\$500-\$1000); Talisman

Club (\$250-500); and CLVEN Club (\$100-250).

Contributions between \$15 and \$100 earn the Pinnacle Club designation. Those giving up to \$15 are listed as Honor Roll members.

All members are urged to take part in the 1979-80 Loyalty Fund campaign which is now starting. Those who would like more information concerning the funds of the Fraternity, special bequests or giving programs are asked to write Headquarters for literature.

Your gift can help make the Phoenix fly ever higher.

FOUNDERS CLUB MEMBERS 1978-1979

Anderson, S. W.—Eastern Michigan '73
Best, E. J.—California '13
Coffey, R.—California '17
Cupp, P. J.—Pennsylvania '21
Franks, M. E.—Illinois '34
Glos, R. E.—Illinois '22
Heurich, C., Jr.—Pennsylvania '20
Hiberly, W. C.—Washington '18
Hilstrom, H. R.—Iowa State '31
Kegel, W. C.—Westminster '48
McGoey, R. A.—California '23
Mosiman, F. W.—Stanford '17
Mueller, H. C.—Illinois Tech. '39
Richardson, G. S.—Colorado '17
Shaeffer, C. W.—Penn State '30
Wadsworth, T. P.—California '17

CARDINAL & STONE CLUB MEMBERS 1978-1979

Akre, C. T.—Iowa '28
Baetz, G. G.—Cincinnati '37
Black, L. R.—Illinois '27
Bunch, G. R.—Marshall '33
Cleworth, C. W.—Illinois '14
Day, A.—Columbia '20
Dietz, H. A.—California '25
Fisher, L. W.—Cornell '15
Freund, R. J.—Illinois Tech. '44
Gibbs, R. R.—Oklahoma '51
Holmes, J. L., Jr.—Penn State '24
Hultquist, L., Jr.—Alabama '60
Lanterman, J. B.—Illinois '34
Lovell, E.—Ohio Wesleyan '27
Peterson, O. S.—Illinois Tech. '39
Robertson, O. L.—Colorado '18
Romig, G. C.—Penn State '23
Sanders, R. S.—Missouri Valley '62
Schultz, N., Jr.—Stanford '35
Strubow, G. B.—Michigan '53
Turner, F. W.—Ohio Wesleyan '20
Williams, E. S.—California '24

TALISMAN CLUB MEMBERS 1978-1979

Allen, R. A.—Purdue '43
Anderson, P. A. C.—Wisconsin '18
Bader, G.—Penn State '23
Bergman, R. S.—Illinois Tech. '53
Blasi, M. G.—Rutgers '65
Broughton, R. D.—Marietta '36
Carpenter, H.—Colorado '27
Christy, N. R.—Marietta '30
Coccia, M. A.—Illinois Tech. '42
Colwell, R. F.—Illinois '27
Conrey, T. M.—Oklahoma '36
Curry, T. G.—Missouri Valley '60
Cutlip, R. B.—Bethany '37
Dedrick, T. R.—Bowling Green '67
DeLuca, J. F.—American '50
Dexter, R. A.—Oregon State '60
Dunn, W. H.—Nebraska '39
Eaton, W. K.—Pennsylvania '19
Engelhardt, C.—Cornell '39
Fegely, J. F.—Pennsylvania '57
Fencil, L. R.—Penn State '30
Flemming, A. S.—Ohio Wesleyan '24
Fontana, R. D., Jr.—California '27
Fulmor, J. N.—California '13
Gallagher, E. S.—Lehigh '34
Glos, D. F.—Illinois '21
Hadsell, N. W.—Ohio Wesleyan '52

Haenn, W., Jr.—Pennsylvania '42
Hall, W. M.—Colorado '15
Harrison, J. M.—Iowa '31
Hawkins, R. C.—Columbia '16
Hayes, E. B.—Stanford '31
Herbert, P. M.—Ohio State '09
Howsam, R. L.—Colorado '38
Kemp, F. F.—Wisconsin '28
Krebs, F. J.—Mount Vernon '29
Kutz, R. W.—California '67
Lindamood, W. W.—Marietta '22
Lundgren, J. C.—Colorado '30
Magoffin, B.—Kentucky '38
McConnell, G.—Marietta '07
Megargel, C. E.—Penn State '22
Merrill, P. C.—Stanford '17
Miller, S. N.—Purdue '64
Pritchett, C. P.—Ohio State '29
Ransom, R. A.—Carnegie-Mellon '25
Rasberry, E. A., Jr.—Atlantic Christian '58
Reeder, H. C.—Iowa '26
Showerman, J. B.—Northern Michigan '69
Sturgis, C. R.—U.C.L.A. '43
Taylor, I. B., Jr.—Ohio State '42
Uhrbrock, H. W.—Cornell '20
VanDeMark, C. W.—Cincinnati '60
Welch, W. H.—Oregon State '21
Wise, A. B.—Baldwin-Wallace '43
Wulff, K. A.—U.C.L.A. '35
Wyckoff, J. W. V.—Marietta '16
Young, B. F.—Ohio Wesleyan '13
Zamparelli, J. F.—Tufts '47

CLVEN CLUB MEMBERS 1978-1979

ALPHA/YALE
Bass, G.E. '23
Beckwith, S.A. '15
Bulkley, G. '15
Frost, R., III '40
Martin, C.G. '14
Sullivan, R.C. '35
Withington, N.E. '26

BETA/HARVARD
Allen, T.R. '17
Farnham, A.S. '26

GAMMA/UNIVERSITY MASSACHUSETTS
Seymour, D.E. '55

DETA/MARIETTA
Crawford, C.H. '29
Cubelli, G.E. '39
Fogle, C.D., Jr. '36
Hickel, N.R. '30
Merlin, D.G. '56
Robinson, C.G. '08
Simpson, L.O. '19
Smith, F.D., Jr. '48

EPSILON/OWU
Beeghly, C.M. '27
Bell, S.W. '27
Betsch, W.D. '29
Brangfass, E.A. '28
Elwood, W.K. '47
Ferris, J.S. '39
Hockman, W.H. '35
Homans, R. '33
Johnston, R.F. '34
Long, D.R. '41
Lovell, E.M. '33
McCammon, M.B. '20
Mills, A.A., Jr. '37

Naylor, C.I. '32
Ohl, J.P. '27
Otto, C.C. '53
Pratt, S.F. '57
Rees, W.H. '28
Ruopp, P.W. '24
Sever Inghaus, J.W. '25
Smyth, C.E. '50

ZETA/OHIO STATE
Armstrong, G.S. '43
Aten, F.G. '40
Calaway, C.P. '19
Clark, E.W. '30
Demelker, B. '30
Dumont, W.P. '16
Forward, C.B. '48
Gerlach, J.G. '43
Gierhart, G.R. '43
Huber, C.C. '42
Kohl, J.R. '39
Lape, D.K. '54
Lathrop, G.L. '23
Lemon, G.E. '31
McLean, C.R. '53
Millay, G.F. '40
Mohr, P.D. '53
Potts, W.D. '68
Ripple, H.L. '40
Roehm, R.D. '17
Roos, H.S. '27
Roth, R.C. '58
Schellenger, H.K. '23
Schuster, H.L., Jr. '45
Sims, J.M. '65

ETA/UNIVERSITY ILLINOIS
Baldwin, D.M. '30
Brydges, D.T. '26
Foute, H.K. '38

Garrett, F.J., Jr. '37
Haines, R.W. '29
Kelsey, R.J. '35
Labahn, A.H. '44
Llewellyn, R. '19
Monsson, C.D. '38
Monsson, W.H. '19
Musser, C.R. '30
Nelson, G.M. '39
Pruett, C.E. '39
Putta, J.G. '38
Robert, P.H. '48
Roschmann, J.A. '51
Ruegg, J.M. '34
Selig, J.A. '31
Shoecraft, R.L. '24
Snyder, D.A. '22
Trutter, J.T. '39

THETA UNIVERSITY MICHIGAN
Benjamin, H.S., Jr. '29
Chapman, M.A. '33
Conlon, T.L. '25
Dunham, D.B. '24
Dunham, H.L. '17
Engel, C.S. '30
Flora, W.R. '25
Grinnell, H.S. '25
Holzhauer, R.N. '40
Janet, R.J. '41
McWood, A.B. '41
Nuttall, M.S. '17
Pederson, E.A., Jr. '34
Pomeroy, J.A. '26
Ruhl, R.C. '60
Senior, H.J. '20
Shenefield, J.W. '23
Thompson, R.E. '64
Walbridge, W.E. '35
Weaver, T.D. '13
Webber, C.E. '61
Wieneke, R.F. '19
Wood, D.L. '58

IOTA/CORNELL
Conger, G.B., III '56
Herkner, G.W. '26
Howard, C.R. '57
Nolin, A.R. '20
Sturtevant, J.F. '16

KAPPA UNIVERSITY MICHIGAN
Burke, K.R. '10
Fuller, A.F. '41
McGurn, W.E. '28
Perrin, H.L. '18
Pinther, H.O. '16
Sisson, H.M. '24
Stevens, C.E. '33
Yegen, P.J. '17
Zuehlke, U.R. '14

LAMBDA/COLUMBIA
Koenig, A.S., Jr. '32
Poceluko, N. '49

MU UNIVERSITY WASHINGTON
Bell, F.N. '22
Burr, W.M. '23
Burrows, K.G. '46
Coffee, J.M. '15
Cole, S.A. '40
Gillespie, S.C. '30
Hunter, R.T. '28
McClarren, R.H. '25
McDermid, D.C. '24
Neumann, C.M. '26

Rue, W.R. '24
Wasley, W.F. '64
Wood, W.R. '19

NU/UC/BERKLEY
Arthur, R.J. '43
Barbier, E. '19
Bell, D.V. '42
Bennett, H.E. '14
Drew, J.E. '16
Cushman, A.T. '21
Denke, F.R. '26
Ettinger, L. '13
Gentle, C.B. '42
Harding, G.L. '40
Haseltine, C.D. '27
Jensen, R.V. '52
McCarthy, F. '28
McKenzie, M.B. '22
Miller, T.K. '35
Needham, W.S. '42
Obendorf, J.H. '47
Pierson, D.B. '24
Reinhardt, J.C. '19
Richards, W.L. '38
Ross, E. '18
Street, W.S. '22
Watkins, R.A. '30
White, A.E. '18
Witzel, O.R. '32
Witzel, E.M. '37
Witzel, C.R. '32
Woodward, O.J. '27
Young, R.H. '15

XI/NEBRASKA
Cole, D.F. '13
Denning, R.H. '38
Hyde, R.W. '41
Schmid, M.G. '20
Woods, E.M. '36

OMICRON/UNIVERSITY PENNSYLVANIA
Barnshaw, H.D. '24
Bowman, R.M. '69
Campbell, L.R., Jr. '47
Cawley, R.C. '38
Cochran, L.S. '20
Decker, M.F. '28
Peters, R.P. '21
Russell, G.B. '31
Standish, L.J., Jr. '32
Taylor, A.M. '19

PI/UNIVERSITY COLORADO
Harry, J. '19
Miller, O.V. '23
Sellers, J.E. '29
Thomas, E.W. '39

RHO/UNIVERSITY MINNESOTA
Denison, C.A. '30
Foote, W.W. '23
Iverson, C.J. '16
Ludvigsen, E.L. '22
McGillivray, W.T. '26
Regnier, L.A. '23

SIGMA/UNIVERSITY KENTUCKY
Allen, Buford L. '27
Davis, L.B. '31
Kane, J.M. '32
McCammon, D.K. '31

TAU/STANFORD
Baty, J.N. '48
Caneer, J. '49
Conroy, B.H. '26

Honor roll

Cowgill, F.H. '17
Hancock, J.W. '55
Hanson, D.R. '53
Ingram, D.L. '51
Martin, D.L. '47
McCourt, P.E. '56
Miller, F. '17
Russell, J.D. '30
Schmidt, T.F. '32
Templeton, R.P. '28

UPSILON/PENN STATE

Astorino, L.D. '65
Bright, W.J. '33
Brower, R.F. '56
Bruce, J.S. '53
Custer, S.A. '41
Davis, H.E. '18
Doyle, R.P. '56
Fisher, R.S. '21
Gilbert, P.F. '41
Gromiller, J.W. '51
Hancock, R.F. '29
Kissingner, G.D. '30
Klaban, W.H. '50
Leonard, R. '44
Patton, J.M. '33
Oharen, T.J. '54
Perry, D.G.C. '42
Quinn, M.G. '30
Reichenbach, N.H. '21
Skoooglund, C.M. Sr. '18
Stroud, H.A., Jr. '21
Thomas, G.S. '36
Van Valkenburg, J.F. '40
Wertz, A.S. '18

PHI/IOWA STATE

Arnold, F.J. '23
Arnold, L.E. '23
Drew, D. '59
Fry, L.V. '34
Grimes, G.C. '65
Gunderson, J.M. '56
Heckman, L. '24
Jaspers, R.H. '57
Lasell, R. '54
Oconner, W.J. '56
Riepe, C.R. '35
Stearns, W.F. '29
Stinson, E. '20
Thurston, S.G. '66
Wirth, W.J. '34

CHI/UNIVERSITY CHICAGO

Caruso, F.F. '22
Droegemuller, A.C. '39
Freidheim, L.E., Jr. '30
Hulbert, H.G. '21
Solf, W.A. '32

PSI/OREGON STATE
Bolen, J.O. '50
Hagg, O.N. '23
Lieuaillen, R.O. '58
Middlekauff, R.E. '61
Strong, H.W. '27
Watson, J.W. '61

ALPHA ALPHA UNIVERSITY OKLAHOMA

Barnett, W.J. '32
Bell, C.S. '55
Breeden, R.H. '26
Crnkovich, J.T. '48
Davis, H. '27
Everett, J.P. '37
Francis, J.E. '56
Miles, J.R. '64
Gordon, W.T. '50
Joyce, W.V. '24
Pierce, I.J. '35
Sharp, R.H. '49
Walker, R.D. '50
Welch, W.F. '35

ALPHA BETA UNIVERSITY IOWA

Carmichael, W.P. '30

ALPHA GAMMA CARNEGIE TECH

Fleming, W.B. '25
Robinson, J.E. '31
Rosing, T.F. '27
Wood, I.C. '25

ALPHA EPSILON SYRACUSE

Ohara, A.P. '38
Resch, W.H. '35

ALPHA ZETA/UCLA

Campbell, L.E. '56
Field, B.H. '26
Flickinger, P.E. '47
Hall, J.E. '32
Johnson, P.F. '30
Kuster, D.H. '50
Manley, O.M. '35

ALPHA THETA UNIVERSITY MISSOURI
Gwinner, D.C. '55
Reid, J.I. '36
Weber, L.W. '29

ALPHA IOTA UNIVERSITY ALABAMA
Allen, J.B. '30
Cronin, Donald J. '48
Domnanovich, J.M. '66
Graham, R.H., III '60
Koch, R.S. '34

ALPHA KAPPA WEST VIRGINIA UNIVERSITY

Burton, B.E. '31
Fisher, F.P. '58

ALPHA MU BALDWIN-WALLACE

Kishman, G.H. '43
Larsen, D.H. '53
Mountz, W. '43
Nemeth, J.K., Jr. '47
Shirkey, W.L. '46

ALPHA NU WESTMINSTER

Hart, G.R. '43
Hilderbrand, C.H. '44
Jamison, W. '39
Muchow, W.P. '64
Navarra, F.H. '48
Reznik, E.W. '48
Sternbergh, G.A. '48
Wagner, W.B. '52

ALPHA XI/ILLINOIS TECH
Balza, J.J. '68
Bledsoe, V.C. '62
Carlson, R.N. '66
Collier, T.P. '39
Danforth, G.E. '63
Davis, A.L. '73
Erikson, G. '58
Faulkner, F.L. '43
Husemann, E.W. '39
Jansen, P., Jr. '43
Leland, W.H. '63
Lovejoy, J.H. '58
McCullough, C.W. '41
Muscato, A.R. '66
Pado, T.F. '52
Piepenbrink, R.E. '39
Plengey, W.D. '39
Sallmann, D.W. '65
Stewart, W.P. '57
Wage, A.E. '49
Wendell, M.W. '54

ALPHA OMICRON MISSOURI VALLEY

Blackburn, J.L. '49
Schondel, G.E. '63

ALPHA PI/PURDUE

Cron, G.L. '69
Cunningham, D.G. '72
Faulkner, F.L., III '71
Krejci, W.G. '67
Mouw, H.J. '46
Newgard, J.R. '39
Sausaman, R.F., Jr. '64
Taylor, C.E. '42
Wachter, C.M. '68
Wood, R.R. '55

ALPHA RHO/NEWARK COLLEGE OF ENGINEERING

Keach, B.C. '49

ALPHA SIGMA/WAGNER

Deluca, L. '58
Russo, T.J. '47

ALPHA TAU/STEVENS INSTITUTE OF TECHNOLOGY

Barry, A.C. '61
Crone, L.A. '26
Eckel, E.J. '50
Kleiber, C.E. '26
Lidstrom, J.A. '57
Oliver, B.H. '26
Stengel, C.W., Jr. '40
Tobin, R.W. '26
Wohlmann, C.A. '63

ALPHA EPSILON BROOKLYN POLYTECHNIC

Alexion, J.C. '38
Brunjes, A. '26
Lawler, W. '33

ALPHA CHI/COLE
Mackenzie, J.J. '62
Shors, W.F. '29

ALPHA PSI PRESBYTERIAN
Blankenship, D.S. '28
Varner, E.C. '58

BETA ALPHA MOUNT UNION

Williams, J.L. '49

BETTA GAMMA/BETHANY

Bonville, W.J. '47
Maloy, T.D. '61
Saxman, B.E. '33

BETA DELTA/MARSHALL

Amodio, J.J. '48

BETA EPSILON/LEHIGH

Betz, J.D. '38
Blake, R.E., III '69
Dempsey, P.J. '52
Hrivnak, G.A. '46
Krumrine, P.H., III '70
Lubbers, A.W. '31
Moyer, P.F. '46
Wilson, R.M. '33

BETA THETA/RUTGERS

Dean, J.E. '37
Senerchia, F.F. '31
Shafer, K. '58
Wheaton, N.E., Jr. '31

BETA IOTA/TUFTS

Brickett, C.M. '57
Moore, J.R. '47
Parks, E.W. '47
Taylor, A.S. '32
Thompson, R.W. '59

BETA LAMBDA/ST. JOHN'S

Smith, E.I. '32

BETA NU VIRGINIA WESLEYAN

Arnold, J.S. '36
Brown, C.W. '43
Chapman, V.R. '33
Simpson, W.W. '41

BETA OMICRON/TRI-STATE

Forbriger, W.S. '46
Jones, J.N. '57
McCormick, J.T. '35

BETA SIGMA UNIVERSITY CINCINNATI

Cox, D.R. '60
Loewenthal, B.J. '66

BETA TAU/WAYNE STATE

Cox, A.R. '50
Flees, W.L. '67
Gaberson, H.A. '51

PINNACLE CLUB MEMBERS 1978-1979

MEMBERS AT LARGE

Anderson, J.R. '44
Brown, G.C. '44
Clark, F.V. '44
Elliott, J.W. '69
Herman, D.E. '69
Robison, C.V. '41
Schwarz, C.B. '40

ALPHA YALE

Bracken, T.E. '25
Calfee, J.B. '32
Chapman, C.S. '11
Eames, E.H. '23
Holden, W.H.T. '15
Houston, R.E., Jr. '26
Knowles, D.N. '23
Madison, W. '23
Murphy, A.K. '31
Norton, R.D. '17
Norton, R.A. '21
Scholten, R.A. '31
Seely, H. '27
Smith, D.G. '20
Thorpe, H.B. '21
Traub, H.J. '21

BETA/HARVARD

Eaton, S.L. '24
Gorriaran, M. '23
Hall, L.P. '19
Mason, W. '13

GAMMA MASSACHUSETTS

Allen, R.E. '64
Babineau, R. '63
Barke, H.E. '37
Blazon, G.M. '69
Brewster, D.T. '39
Canney, G.G. '26
Carpenter, E.S. '21
Crotty, P.A. '62

Mac Phee, W.D. '49

Monnett, R.L. '51

BETA CHI/AMERICAN

Muron, V.A. '51
Popham, L.C., III '50
Steinko, F.A., Jr. '64
Tourtellot, P.L. '57
Vallieres, A.I. '41

BETA PSI/R.P.I.

Bayerdorffer, H.C.
Rappolt, J.F. '56

GAMMA ALPHA OHIO NORTH

Henning, L.R. '48
Needy, J.A., Jr. '55

GAMMA GAMMA UNIVERSITY CONNECTICUT

Dambrosio, D. '61
Hogan, A.G. '51
Jones, P.B. '67
Miller, R.E. '49
Vanek, R.J. '64

GAMMA DELTA DAVIS & ELKINS

Yulo, F.R. '49

GAMMA EPSILON BUFFALO

Board, H.B. '50
Hierl, A.E. '61

GAMMA ZETA BOWLING GREEN STATE

Deutsch, R.E. '65

GAMMA IOTA UNIVERSITY ARIZONA

Mense, A.T. '64
Stewart, W.D. '62

GAMMA KAPPA MICHIGAN STATE

Beyer, A.R. '59
Cornell, T.B. '56
Winquist, C.J. '56

GAMMA MU CHARLESTON

Treadwell, W.F. '67

GAMMA NU SACRAMENTO STATE

Sherwood, R.E. '67

GAMMA QI/WIDENER

Dixon, F.E., Jr. '73

GAMMA SIGMA DETROIT TECH

Brown, J.A. '66
Dise, J.H. '66

GAMMA PHI/CONCORD

Green, M.J. '70

DELTA BETA NORTHERN MICHIGAN

Harms, H.H. '73

Patton, W.F. '62

Randolph, L.M. '63
Rempe, E.T., Jr. '24
Rochester, D.A. '62
Schlicher, R.R. '34
Thomas, N.A. '20
Ward, L.C. '19
Wartluft, D.L. '60

EPSILON OHIO WESLEYAN

Allen, B.P. '22
Arai, H.Y. '54
Bailey, M.C. '37
Ballard, F.C. '54
Beck, G.C. '40
Blind, H.D. '52
Broberg, W.E. '47
Brown, W.M. '34
Burns, R.F. '32
Cole, E.B. '13
Crockett, D.B. '56
Cunningham, L.L., Jr. '29
Davis, E.C. '41
Greene, M.F. '30
Hughes, T.C. '56
Hull, H.A. '39
Johnson, O.N. '17
Kepner, H.M. '56
Lantz, D.S. '30
Mellen, J.E. '36
Merrill, J.B. '52
Mills, A.A., III '67
Olds, H.V. '13
Peterson, J.C. '58
Peterson, W.D. '49
Plunkett, J.A., Jr. '49
Polandick, C. '55
Ryen, J. '26
Recker, T.L. '35
Reiter, D.K. '59
Smith, H.A. '34
Smith, T.C. '49
Spees, L.G. '57
Stanley, C.M. '13
Stephens, J.H. '48
Sullivan, L.D. '49
Swank, R.W. '49
Swisher, T.R. '51
Thaler, D.M. '49
Vonderasek, C.J. '55
Cady, S.H., Jr. '24
Campbell, J.A. '20
Carscallen, C.H. '57
Coale, F.A. '59
Cova, J.C. '68
Danyko, D.D. '66
Devine, W.D., Jr. '60
Dodd, R. '42
Dukarski, M.J. '73
Dunn, H.C. '49
Dunn, J.D. '47
Eades, C.C. '19
Fredrickson, J.H. '60
Fuss, P.S. '54
Garner, J.E. '29
Genebach, L.B. '17
Hagar, C.N. '37
Hammill, D. '29
Hansen, D.C. '58
Heston, W.M., Jr. '29
Heym, H.C. '17
Hoffelich, R.M. '27
Jenkins, M.J. '65
Johnson, A.F. '48
Kaufman, D.H. '64
Kleinhaus, F.W. '63
Ladd, J.W. '64
Lauria, L. '62
Manty, D.E. '67
Markus, T.S. '67
Mason, W.G. '17
Mayers, S.T. '27
McCubrey, J.B. '54
McLaughlin, N. '31
Murray, J.R. '40
Nelson, K.M. '39
Park, R.W. '54
Powell, D.S. '67
Puffer, J.W., III '61
Raczowski, R.T. '64
Reisman, O.L. '49
Robison, S.W. '27
Rockershausen, W.F. '56
Schwark, J.R. '65
Sellers, C.V. '14
Setta, T.F., Jr. '67
Shea, S.C. '30
Shirley, R.A. '53
Shirrell, R.D. '47
Shoup, G.L., Jr. '47
Stoller, R.A. '28
Sutherland, C.M. '64
Tessmer, R. '48
Van Loan, G. '25
Waterbury, W.R. '43
West, L.R. '38
Weston, L.D. '47
Wilson, W.W. '47
Wilt, T.R. '65
Winters, J.K. '43
Zahnow, C.C. '37

ETA/ILLINOIS

Armstrong, H.C. '30
Balderson, B.A. '34
Bartling, C.W. '30
Bednar, R.R. '62
Biro, N.G. '51
Rolster, C.L. '52
Burnett, O.F. '23
Caveney, J.E. '46
Christian, W.A. '28
Cowan, L.J. '51
Derby, R.O. '47
Elliott, W.J. '42
Felten, J.C. '51
Foster, J.C. '69
Fregeau, J.C. '67
Gallagher, R.H. '55
Gillen, M.C. '65
Gladish, R.L. '61
Gough, C.A. '57
Grill, D.A. '31
Hameetman, R.A. '71
Hanley, S.R. '71
Harper, C.B. '28
Harrold, B.L. '61
Hartmann, C.P. '54
Hendricks, R.C. '56
Hermann, R.J. '63
Holland, F.E. '56
Holste, J.R. '54
Huppert, W.W. '49
Izard, R.F. '59

Jakowsky, R.H. '80

Jeolink, W.F. '31
Johannes, R.P. '53
Johnson, J.E. '50
Klocek, G.W. '66
Landon, R.H. '25
Larue, R.E., Jr. '26
Lauterbach, W.W. '18
Lawrence, H.D. '59
Lehward, J.W. '31
Lenzo, J. '65
Logan, E.E. '10
Lowe, G.K. '31
Manning, R.V. '25
Marchiando, P.J. '59
Maughmer, M.D. '69
Newell, J.C. '49
Picard, J.L. '26
Pierce, C.W. '25
Quinton, S.L. '73
Raaf, R.C. '20
Rhodes, M.G. '57
Roeder, J.A. '58
Rullman, B.E., Jr. '34
Sanders, P.T. '20
Sandowskis, A.J. '71
Sherman, W.S. '22
Spiegler, R.W. '43
Stewart, A.S. '31
Stone, R.E. '61
Stollard, S.D. '47
Tagler, G.J. '70
Watson, R.B. '61
Westwood, G.F. '31
Wickman, R.P. '36
Wilton, P.L. '27
Yerington, J.G. '15
Young, A. '56

THETA/MICHIGAN

Aldridge, C.W., '38
Bartley, L.D. '34
Beckman, W.A. '54
Bieser, C.O. '47
Bohn, R.T., Jr. '43
Bombery, M.F. '66
Brady, F.J. '30
Brandenstein, Z.G. '43
Bridgman, G. '51
Brown, D.G. '65
Burrell, A.A. '13
Cady, S.H., Jr. '24
Campbell, J.A. '20
Carscallen, C.H. '57
Coale, F.A. '59
Cova, J.C. '68
Danyko, D.D. '66
Devine, W.D., Jr. '60
Dodd, R. '42
Dukarski, M.J. '73
Dunn, H.C. '49
Dunn, J.D. '47
Eades, C.C. '19
Fredrickson, J.H. '60
Fuss, P.S. '54
Garner, J.E. '29
Genebach, L.B. '17
Hagar, C.N. '37
Hammill, D. '29
Hansen, D.C. '58
Heston, W.M., Jr. '29
Heym, H.C. '17
Hoffelich, R.M. '27
Jenkins, M.J. '65
Johnson, A.F. '48
Kaufman, D.H. '64
Kleinhaus, F.W. '63
Ladd, J.W. '64
Lauria, L. '62
Manty, D.E. '67
Markus, T.S. '67
Mason, W.G. '17
Mayers, S.T. '27
McCubrey, J.B. '54
McLaughlin, N. '31
Murray, J.R. '40
Nelson, K.M. '39
Park, R.W. '54
Powell, D.S. '67
Puffer, J.W., III '61
Raczowski, R.T. '64
Reisman, O.L. '49
Robison, S.W. '27
Rockershausen, W.F. '56
Schwark, J.R. '65
Sellers, C.V. '14
Setta, T.F., Jr. '67
Shea, S.C. '30
Shirley, R.A. '53
Shirrell, R.D. '47
Shoup, G.L., Jr. '47
Stoller, R.A. '28
Sutherland, C.M. '64
Tessmer, R. '48
Van Loan, G. '25
Waterbury, W.R. '43
West, L.R. '38
Weston, L.D. '47
Wilson, W.W. '47
Wilt, T.R. '65
Winters, J.K. '43
Zahnow, C.C. '37

IOTA/CORNELL

Adelmann, H.R. '39
Alden, J.C. '52
Bastian, B.A. '28
Bryce, E.R., Jr. '64
Corsini, G.J. '73
Cramer, F.J. '26
Dunbar, P.A. '50

Fogg, S.L. '74

Frediani, R.J. '72
Freeman, J.S. '66
Gillespie, J.J. '32
Hamill, J.W. '53
Hannan, W.P. '29
Harwood, W. '12
Herbert, B.A. '58
Jasionis, J.E. '57
Johnson, H.S. '09
Kelly, W.F. '42
Linsner, G.P. '55
Mahl, W. '20
Melville, W.D., Jr. '60
Olson, H.G. '31
Pease, C.L. '66
Phillips, E.S. '28
Riddle, W.E. '61
Ryberg, E. '64
Schade, J.A. '18
Smith, D.C. '27
Stevens, R.W. '47
Thompson, J.B., III '64
Toussaint, P.J. '66
Van Aken, J.L. '37
VanHeiningen, J.J. '57
Verbsky, J.D. '51
Whittaker, C.G. '20
Yoder, H.F. '23

KAPPA/WICONSIN

Anderson, E.A. '12
Brace, D.O. '20
Chase, L.P. '20
Forsgren, K.E. '36
Hilgendorf, H. '36
Hinn, H.J. '28
Kaiser, P. '31
Knoll, W.A. '11
Pridmore, H.E. '25
Ruhms, E.H. '17
Sullivan, G.R. '29
Sullivan, J.F., Jr. '21
Taube, K.D. '52
Tederstrom, A.H. '23

LAMBDA COLUMBIA

Biunno, V.P. '32
Bliss, P. '21
Carr, W.E. '28
Collin, W.E. '21
Collingwood, D.M. '14
Gruen, W.J. '28
Kiddler, J.H. '19
Mueller, C.H. '22
Palmer, D.O. '26
Palmer, H.W. '13
Rudd, C. '25
Schovil, F.K. '18
Weldon, E.D. '13
Williams, W.J. '25

MU/WASHINGTON

Amundsen, C.L. '73
Banner, C.R. '72
Beresford, C.H. '42
Brown, P.L. '52
Chamberlain, H.E. '67
Clark, R.W.K. '40
Coffee, G. '23
Cole, O.H. '15
Courtney, C.E. '18
Ditmars, I.D. '25
Ditmars, J.A. '24
Bobson, T.W. '26
Erickson, A.J. '37
Everett, L.H. '70
Fellows, R.A. '70
Fisher, P.H. '18
Fletcher, J.M. '21
Gardner, C.L. '26
Gardner, O. '20
Goodfellow, J.P. '45
Graf, R.L. '54
Griffith, J.M. '28
Hammond, J. '66
Hansen, R.D. '67
Hibbard, A.E. '28
Johnston, R.G. '63
Kempinsky, H.A., Jr. '36
Krippner, E.H. '42
Landon, F.J. '35
Lauber, C.D. '45
Loughary, J.B., Jr. '20
Luecken, C.A.P. '25
Lund, E.G. '72
Martin, O.E. '52
McNeil, J.M. '66
Meredith, J.E. '54
Merrill, J.M. '34
Moen, G.O., Jr. '35
Morrison, L.P. '71
Nelson, W.H., Jr. '34
Ness, K.M. '36
Patton, L.G. '48
Peters, D.R. '45
Pool, J.T. '62
Ramsey, R.E. '53
Rapiet, R.E. '69
Rice, R.T. '73
Rogers, W.G. '16
Rudeen, C.W. '43
Schwarz, P.W. '42
Skog, D.R. '45
Stuarg, G.R. '35
Tollefson, T.C. '25
Turner, C.P. '26
Veys, M.R., Jr. '50
Wallace, D.A. '49
Warren, G.F. '25
Yeaman, J.H. '48

NU/CALIFORNIA

Bernard, L.G. '25
Bohn, J.A. '29
Bree, J.H. '24
Breed, A.H., Jr. '23
Carrick, R.P. '54
Clarke, G.A. '31
Doane, J.F. '36
Flickinger, R.W. '50
Higgins, N.S. '48
Huberty, J.S. '39
Jones, G.W. '35
Lutz, R.D. '47
Meckel, R.B. '40
Mensing, H.H. '42
Miller, L.B. '15
Montgomery, W.L. '24
Moers, D. '49
Newkirk, R.S. '65
Nichols, M.A. '64
Perham, G.S. '50
Perkins, C. '64
Price, P.W., Jr. '42
Ragan, E.M. '37
Reidy, K.J. '58
Riemke, R.A. '63
Schick, J.C. '42
Sciutto, G.M. '63
Smith, A.B. '15
Standard, C.J. '47
Stratta, J.L. '42
Thornburn, D.B. '23
Walker, P.J. '14
Watson, D. '27
Wells, G.M. '13
Wertsch, R.A. '37
White, M.K. '56
Wilber, H.M. '22
Williams, G.W. '13
Zanzot, H.C. '31
XI/NEBRASKA
Felton, H.W. '21
McGinnis, K.T. '30
Neff, J.C. '19
Parks, N.C. '37
Peterson, W.C. '22
Therier, R.C. '39
OMICRON U. PENNSYLVANIA
Aillison, G. '66
Axley, O.O. '23
Baker, P.G. '31
Bardwil, J.A. '47
Bell, J.H. '47
Bennett, A.B., Sr. '26
Bentz, L.W., Jr. '45
Boag, W.A. '19
Brainerd, J.A. '23
Brown, W.R. '30
Brummer, J.A. '28
Budd, R.M. '21
Bunzel, C.F., Jr. '54
Carmen, H.A. '48
Charlton, M.S. '49
Comery, R.T. '40
Cowan, H.B., Jr. '43
Delamater, R.W. '26
Dunn, T.L. '51
Eaton, M.T. '19
Hall, W.R., II '67
Horan, P.M., Jr. '49
Jacoby, E.G. '61
Johnson, G.S., Jr. '47
Kennedy, M.H. '19
Kilgore, J.G., Jr. '68
Knight, A.B. '29
Lasor, W.S. '28
Little, B.A. '19
Maloney, W.G. '36
Meagher, E.A. '45
Mitchell, C.H. '40
Moomaw, S.J. '52
Nakamura, R.M. '58
Place, J.D., Jr. '39
Puzio, T.J. '50
Rech, W.F. '45
Renninger, F.H. '45
Ritchie, B.T. '60
Schweikert, D.K. '42
Scott, R.E., Jr. '26
Shaw, J.H. '49
Sparks, D.R. '46
Stuebner, R.L. '45
Sunder, W.G. '28
Thorpe, O.E., Jr. '39
Waite, F.R. '43
White, C.L. '24
Wilson, H.P. '50
PI/COLORADO
Brant, W.J. '36
Burrows, K.B. '27
Dereus, V.G. '25
Dye, P.H. '35
Eckel, J.G. '20
Gallagher, W.W. '38
Hix, C.A. '21
Johnson, C.P., Jr. '39
Jones, E.M. '17
Keyes, C.M. '27
Lenning, G. '23
Lewis, P.M. '19
Stewart, B.M. '33
Wahlberg, E.M. '19
Walker, C.W. '26
Watrous, W.M. '34
Webber, H.M. '23
Weese, H.J. '61
RHO/MINNESOTA
Anderson, K.E. '30
Bryan, T.J. '31

Clark, L.S. '20
Hanna, W.L. '18
Herbison, C.W. '25
Lust, L.C. '26
Nelson, J.P. '20
Smith, L.P. '19
Steiger, E.L. '19
Stodola, H.W. '27
Thompson, T.M. '30
SIGMA/KENTUCKY
Bethel, H.L. '37
Engler, F.E. '49
Hund, J.W. '35
Jones, O.L. '20
Lyle, I.W., Jr. '31
Manly, S., III '26
McCuddy, C.C. '17
Miller, J.W. '33
Morgan, K.C. '39
Moss, R.C., Jr. '39
Newman, G.W. '25
Smith, K.R. '22
Wilson, W.C. '26
TAU/SANFORD
Alderman, R. '53
Blair, J.D. '28
Blakely, D. '70
Bradley, G.E. '25
Brown, N.J. '38
Campbell, W.B. '41
Conlin, J.R. '33
Culp, H.G. '49
Ducommun, E.G. '39
Gard, J.H. '52
Giffra, M.R. '37
Gonser, W.L. '50
Harris, H.B. '31
Haserot, J.J. '52
Humphrey, P.G. '35
Hyatt, D. '40
Irvine, E.E. '47
Koepke, F.H. '39
Lahusen, G. '47
Melvin, S.R. '40
Phillipson, D. '61
Poore, J.A. '62
Priest, D.E. '51
Schmid, B.L. '47
Stroud, W.M. '74
Sturgeon, J.A. '54
Tangeman, J.R. '34
Wintner, R. '29
Yost, F.M. '37
UPSILON/PENN STATE
Baker, R.E. '22
Balkey, J.A., Jr. '55
Boyd, G.H. '36
Butler, P.P. '48
Colbaugh, J.E. '67
Collins, A.B. '63
Collins, D.E. '64
Dean, R.C. '61
Eaglesham, T.W. '33
Eichholtz, R.A., Jr. '70
Eshenbaugh, W.A. '62
Fallon, T.F., III '41
Ferrari, R.A. '56
Ferraro, J.L. '57
Forster, A.H. '28
Freeseaman, J.A. '65
Gombos, B.R. '65
Good, W.G. '58
Griffith, A.A., Jr. '47
Griffiths, F.R. '46
Hall, R.H. '38
Harris, A.C. '32
Hinks, R.R. '42
Hinks, W.H., Jr. '42
Houseman, O.T. '51
Hutchinson, R.L. '30
Jones, H.L. '30
Jones, J.A. '56
Jones, J.K. '26
Kosinski, J.G. '58
Koven, M. '38
Lord, A.H. '62
Lynch, L.G., Jr. '55
Marozzi, E.V. '64
Martin, A.L. '48
Martinez, M.A. '51
Merkel, P.P. '18
Metzger, C.H., Jr. '52
Mills, D.F. '47
Monk, D.B. '57
Nicholas, J.W. '19
Oliver, J. '39
Page, V.C., Jr. '37
Pamley, H.M. '28
Peters, T.B. '18
Pischke, R.O. '50
Predzin, J.L. '47
Rankin, P.B. '23
Rierson, W.P. '59
Riker, R.B. '29
Rimel, C.L. '60
Rodda, N.F. '29
Selden, J.W. '38
Sheen, M.R. '38
Skoglund, J.W. '49
Smith, C.B. '40
Smith, R.H. '54
Sowers, C.W. '53
Spangler, N.W. '42
Taylor, G.R. '64
Thompson, R.D. '53
Walker, R.A. '55
Warrender, W.F. '53
Wescott, G.T. '50
Whisler, J.H. '33
Wickland, E.H., Jr. '59

Williams, G.E. '40
Williams, H.S. '35
Yoder, R.W. '41
PHI/IOWA STATE
Anderson, W.J. '55
Arnold, W.R. '25
Best, L.M. '21
Bohan, C.L. '28
Brooks, M.R., Jr. '39
Buck, R.M. '30
Cloys, W. '20
Culbert, L.L. '68
Dockstader, W.B. '37
Embre, J.N. '22
Ethington, R.D. '71
Grossman, J.C. '20
Hare, R.C. '72
Holthaus, K.C. '71
Jennings, R.E. '61
Johnston, J.R. '56
Lehman, J.A. '70
Meyer, L.A. '62
Miller, T.E. '69
Moore, L.F. '27
Nickerson, H.J. '58
Olsen, P.W. '72
Olson, S. '65
Palmer, J.T. '56
Paras, G.S. '34
Plotz, G.A. '69
Royalty, T.J. '69
Ruhsam, H.E. '38
Rule, J.R. '56
Schoelerman, L.D. '66
Sterbenz, F. '59
Sterbenz, P.E. '57
Thomas, C.W. '52
Virden, S.P. '71
Wharton, J.M. '65
Ziemann, T.E. '65
CHI/CHICAGO
Elliott, C.H. '22
McDonald, G.H. '20
Noble, F.M. '20
Powers, W.F. '23
Puschel, W.E. '29
Root, J.V. '24
Scholz, R.R. '25
Vicek, A.J. '31
PSI/OREGON ST.
Bell, J.B., Jr. '32
Berry, J.H. '63
Bibby, T.L. '66
Blanchard, K.R. '63
Bree, J.L. '22
Bronson, J.W. '68
Butterlich, V.F. '21
Campbell, W.A. '69
Carson, W.E. '33
Coburn, W.R. '72
Cole, J.R., Jr. '70
Compton, M.A. '23
Cummings, J.W. '59
David, J.E. '47
Dietz, C.P. '70
Dunn, H.S., Jr. '42
Forbes, J.C. '64
Hammer, J.H. '59
Hawley, N.R. '25
Helgeson, V.A. '25
Johnson, M.F. '56
Kennedy, J.D., Jr. '68
Klink, C.A. '40
Knowlton, D.L. '63
Larkin, M.D. '66
Ledgerwood, S.L. '63
Lund, W.H. '24
Marquis, E.P. '64
Martin, R.W., Jr. '42
Nicholas, M. '20
Oneal, R.D. '67
Penson, H.N. '46
Place, D.E. '66
Roberts, H.K. '40
Robertson, A.A. '63
Rose, R.R. '61
Rusch, I.R. '48
Russell, E.E. '20
Sanford, D.D. '47
Schmoke, S.A. '63
Schuttpelz, A. '20
Spriggs, D.G. '53
Sturges, R.M. '38
Thorson, R.H. '38
Todd, K.C. '32
Truttmann, F.M. '48
Vandel, G.T. '27
Waters, M.K. '73
Wolf, T.S. '73
York, R.L. '20
ALPHA ALPHA OKLAHOMA
Ashton, F.T. '29
Barnett, L. '35
Barrett, C.M. '26
Barrett, F.E. '26
Bebbington, C.R. '23
Carson, J.S. '72
Clark, J.A. '30
Colbert, B.R. '48
Daniels, C.E. '61
Fields, D.E. '23
Fleet, J.J. '24
Goodner, M.E. '27
Goth, P.M. '66
Hass, G.G. '67
Harmon, J.T. '59
Hood, W.E. '24
Johnson, D.K. '27
Lenau, C.L. '28

Mathes, W.A. '70
McCullough, K.E. '54
McGee, J.L. '33
Messers, S.D. '57
Montgomery, W.J. '23
Montgomery, R.S. '26
Mount, P.C. '69
Olinghouse, J.E. '64
Peace, H.W., II '57
Riggs, J.E. '48
Runyan, J.R. '32
Scott, N.K. '26
Skinner, M.R. '66
Slayton, J.A. '72
Terry, S.L. '66
Thomas, J.S. '48
Thomas, W.T. '28
Thompson, R.J. '28
Travis, D.E. '67
Vassilakos, D.G. '70
Wiggins, W.E. '23
Womack, T.D. '72
Woodward, N.W., Jr. '51
Woody, W.P. '62
Zust, R.A. '23
ALPHA BETA/U.IOWA
Brandhorst, G.H. '27
Carmichael, H.H. '28
Distelhorst, C.F. '25
Green, R.G. '38
Hanson, A.W. '52
Harrington, R.J. '28
Hutchinson, E.J. '24
Post, R.B. '36
Ray, R.H. '24
Sidwell, R.R. '32
ALPHA GAMMA CARNEGIE TECH.
Babin, J. '35
Brown, H.F. '26
Fischer, D.H. '30
Goodwin, C.B. '26
Ingold, L.W. '32
Krudener, A.A. '32
Okeson, S.A. '28
Schauwecker, K.F. '30
Sidells, A.F. '26
Treon, D. '27
ALPHA DELTA MIDDLEBURY
Anderson, K.W. '25
Baines, E.A. '40
Chapin, M.W., Jr. '25
Costaldo, A.J. '33
Donnelly, J.L. '25
Frank, H.J. '25
Gollnick, E.F. '25
Happ, C.L. '25
Miesse, A.G. '41
Powers, W.H. '35
Siipola, G.T. '30
ALPHA EPSILON SYRACUSE
Barry, E.F. '25
Diaso, H.R. '28
Oberfall, J.W. '49
Pomeroy, S.E. '26
Tschirhart, W.H. '48
Wells, T.F. '57
ALPHA ZETA/UCLA
Ackerman, L.C. '36
Badger, T.C. '45
Bauckham, A.M. '26
Byer, E. '26
Cooper, D.J. '55
Dehaven, D.L. '57
Demmon, R.H. '26
Fielden, R.C. '27
Francisco, J.B. '27
Froelich, F.H. '30
Gallup, L.K. '42
Grube, K.P. '30
Harrison, J.E. '49
Harvey, R.A. '32
Leonard, W.R. '34
Mitchell, H.L. '33
Nelson, R.A. '53
Nieves, H. '66
Nuckles, T.F. '48
Oneil, W.P., Jr. '43
Pierce, W.R. '51
Rush, W.J. '49
Sanders, F.H. '49
Trammell, R.L. '70
Ulrich, M. '26
Wills, E.C. '22
Wong, C. '66
Young, F.A. '66
ALPHA ETA DARTMOUTH
Peacock, J.A. '28
ALPHA THETA U. MISSOURI
Bax, E.R. '39
Clapper, W.O. '57
Dunsford, F.J. '50
Gill, B.F. '46
Lemon, J.L., Jr. '59
Moore, J.A. '30
Murray, R.W. '30
Rixman, S.F. '49
Traub, D.V. '49
ALPHA IOTA ALABAMA
Carson, W.G. '43
Copeland, D.A. '62
Francis, A.R. '61
Garland, V. '66
Helms, S.B. '30
Hendrickson, J.L. '57

Heslop, M.W. '41
Lee, R.M. '40
Lemons, R.M. '50
Patruno, S.S. '61
Taylor, J.L., Jr. '48
ALPHA KAPPA WEST VIRGINIA
Clower, J.I. '47
Corcoran, H.V. '32
Devol, H.A. '31
Dunlap, A.D. '55
Leiphart, C.D. '31
Martin, W. '32
Toompas, E.A. '47
Trenton, A.F. '48
ALPHA LAMBA CASE WESTERN
Cook, A.J., Jr. '39
Garrison, D.A. '39
ALPHA MU BALDWIN-WALLACE
Acton, B.A. '69
Alheit, E.J. '44
Armington, S.F., Jr. '41
Buehl, W.A. '30
Chapman, J.H. '48
Coy, R.L. '58
Dick, R. '47
Fatica, M.F. '39
Geiss, M.C. '46
Goss, G.G. '52
Govich, B.M. '49
Grunden, J.P., Jr. '64
Kuback, D.H. '54
Kuhner, J.S. '73
Leach, J.K. '41
McLaughlin, J.A. '56
Owens, W.F. '61
Parks, D.R. '72
Reynolds, D.L. '51
Roberson, W.N. '57
Schnaterbeck, R.A. '53
Smith, P. '40
Sommer, R.C. '49
Stephens, D.E. '51
Stephens, M.E. '73
Sutherland, R. '40
ALPHA NU WESTMINSTER
Anderson, D.A. '51
Anderson, G. '71
Chew, R.L. '72
Conner, H.R., Jr. '48
Cullison, R.M. '46
Eckles, T. '47
Edwards, F.J. '70
Führer, R.E. '43
Fuller, J.R. '71
Himes, R.K. '39
Johnson, R.L. '71
Marsico, F. '54
McCullough, T.L. '57
Merwin, R.L. '51
Musser, P.M. '42
Paine, F.V. '44
Pierson, L.R. '56
Rose, N.E. '39
Schaffert, R.J. '51
Scheid, J.E., Jr. '42
Schneckenburger, D.K. '73
Simpson, J.W. '47
Smith, A.E. '49
Toporcer, L.H. '54
Waldron, H.L. '62
Walker, R.H. '56
Wilson, T.E. '49
ALPHA XI ILLINOIS TECH
Adams, R.J. '61
Anderson, W.E. '41
Anker, E.J. '55
Arndt, G.E. '63
Browning, R.W. '44
Buechler, J.R. '60
Caldwell, W.M. '39
Carey, N.W. '41
Chase, E.D. '58
Clayson, J.E. '39
Dahlstrom, T.A. '58
Dekovic, C.W., Jr. '54
Deuter, C.H. '39
Dommer, R.L. '70
Fijak, T., Jr. '58
Gabel, R.B. '65
Glossop, D.L., Jr. '52
Graham, C.P. '39
Gregory, J.J. '39
Griglic, C.J. '50
Harison, L.C. '47
Hedeen, D.K. '44
Imsen, G.H. '58
Janssen, E.G., Jr. '47
Jensen, N.B. '61
Kegel, R.A. '59
Kustin, C., Jr. '54
Maihock, D.J. '41
Matsuda, G.P. '72
McNellis, J.J. '59
Miller, T.H. '70
Morgan, G.A. '30
Morrissey, G.M. '62
Munini, L.J. '61
Poland, J.A. '53
Rogers, R.E. '63
Ruda, M.J. '69
Rudolph, O.B. '49
Sakumoto, W.K. '69
Schneeberger, C.E. '61
Stuart, D.K. '64

Tappan, P.W. '49
Uram, C.G. '51
Vram, G.F. '71
Verre, J.L. '47
Weidenmiller, J.E. '41
Zielinski, P.P. '68
Zinkel, R.R. '50
ALPHA OMICRON MISSOURI VALLEY
Berkley, N. '68
Bernhardt, J.G. '62
Billington, B.J. '54
Brown, R.C. '66
Cooper, D.W. '70
Dowd, R.L. '68
Edwards, K.E. '71
Espeland, N.C. '61
Gamet, P.B. '71
Jager, K.A. '68
Keller, W.H. '70
Kohl, K.A. '69
Korbitz, W.E. '45
Lawrence, B. '65
Lee, L.M.H. '56
Molander, L.L. '61
Crt, R.R. '68
Schelbel, E.J. '72
Sleeper, F.H. '49
Spaulding, E.D. '50
Surles, L.E. '54
Tanaka, H. '71
Thomas, D.A. '69
Thompson, T.J. '72
Wienke, R.E. '50
Young, K.L. '49
ALPHA PI/PURDUE
Allen, C.D. '72
Allen, E.N. '71
Bass, J.E. '65
Baker, R.D. '73
Booty, R.A. '61
Cady, D.W. '66
Caldwell, W.R. '58
Cottrell, P.D. '68
Cox, K.A. '72
Cutshaw, J.W., Jr. '51
David, S.R. '73
Earle, A.P. '42
Endres, P.C. '69
Ford, R.C. '72
Frapwell, T.J. '72
Greehafer, C.R. '55
Gibson, R.L. '71
Giunipero, L.C. '67
Givler, M.C. '65
Grundman, M.E. '69
Hess, G.A., Jr. '63
Hood, G.A. '72
Hunt, R.W. '53
Hurt, C.D. '63
Jackson, A.C., Jr. '41
Jarvis, A.E., Jr. '67
Karpick, D.M. '71
Kreps, D.W. '72
Kuchar, A.R. '58
Leech, J.N. '69
Leeper, R.W. '72
Linclemann, R.C. '71
Maxter, W.R. '44
Mehalko, G.T., Jr. '69
Merrell, J.S. '72
Mihalik, A.S. '68
Moore, T.P. '72
Mullins, J.M. '70
Murphy, P.F., III '69
Nayman, K.R. '71
Neukranz, L.W. '73
Pearson, R.G. '67
Phinney, D.E. '66
Richey, R.C. '69
Rietz, R.W., Jr. '72
Rietz, R.E. '50
Schmidt, C.V. '66
Serafin, A.J. '62
Shute, L.A. '63
Sinise, G.A. '70
Soulen, W.R. '49
Stafford, T.H. '66
Stanley, C.R. '57
Sum, R.N. '52
Taylor, R.R. '72
Thorne, J.P. '69
Uhl, P.H., Jr. '72
Van Guntan, D. '43
Wallisch, D.J. '73
Weinhart, S.A. '72
Williams, H.W. '69
Wilson, G.G. '66
Witty, J.C., II '41
Wright, W.P. '70
Wulf, C.A., Jr. '41
Yeakley, M.L. '72
Young, R.A., Jr. '66
ALPHA RHO NEWARK COLLEGE OF ENGINEERING
Cox, R.J. '26
Doby, G.F. '44
Gauch, J.H. '50
Korf, A.S. '26
Medlin, R.E. '52
Moelet, G.M. '39
Reibel, P.F., Jr. '47
Wolpert, F.S. '26
ALPHA SIGMA WAGNER
Bale, M.J. '71
Cranston, V.A. '52
Dietrich, S.W. '38
Forschelli, J.D. '64

Honor roll

Gollnick, F.L. '26
Goss, C.K. '63
Harvey, G.D. '60
Hoppe, E.C. '26
Jicha, R.H. '43
Johnson, W.E. '40
Metzger, J.H., III '58
Schoenlank, R.F. '49
Schroeder, M.D. '39
Smith, L.J. '46
Soriano, R.A. '61
Steeve, H.W. '57
Tarsit, K.J. '59
Tosi, A.J. '50
Troast, G.G. '71
ALPHA TAU STEVENS TECH.
Bennet, A.D. '28
Biamonte, C. '39
Biamonte, R.V. '42
Brice, J. '68
Brooks, A.R., III '70
Cancelosi, J.V. '67
Crabtree, J. '62
Creazzo, J.A. '70
Depaulo, J.J. '65
Ermisch, A.R. '26
Eversdingen, J.V. '62
Fielding, A.W. '38
Forslund, R.P. '59
Gibbs, J.R., Jr. '42
Grouls, D.R. '61
Heydt, H.J. '70
Hochstein, J.L. '70
Keowen, P.T. '28
Kugler, A.N. '26
Lewis, A.S. '69
Lewis, W.J. '54
Luckert, W.L. '65
McCullough, W.A. '62
McKimm, T. '61
Metzger, L.A. '68
Roosevelt, J.G. '67
Scheidegg, C.P. '66
Schmitz, F.W. '36
Stemmle, R.W. '59
Stocker, G.C. '62
Sundberg, E.B. '29
Talbot, J.D. '63
Tamulevich, J.J. '69
Van Seggern, P. '63
Waypa, K. '67
Wilcox, P.J. '63
Zwack, P.T. '26
ALPHA UPSILON BROOKLYN POLY INST.
Crager, W.C. '26
Kaupp, W.O. '35
ALPHA CHI/COE
Crane, M.A. '70
Greifzu, J.M. '67
Helming, J.D. '58
Hintz, P.W. '28
Hoffmann, J.H. '71
Kensinger, D.G. '69
Konschak, R.J. '69
Loucks, D.A. '67
Slechts, C.F. '28
Wise, W.M. '58
ALPHA PSI PRESBYTERIAN
Freeman, T.B. '51
Harper, C.C. '60
Sumner, R.C. '58
Varn, A.S., Jr. '63
Williams, R.C. '62
Wilson, C.D. '39
BETA ALPHA MOUNT UNION
Giusti, G. '35
Hutton, C.O. '29
Keller, C.C. '29
Kohl, M.F. '30
McFarland, V.A. '29
Thoma, D.J. '29
BETA GAMMA BETHANY
Bartholomew, T., II '61
Bragg, R.L. '56
Ciuffoletti, A.G. '50
Horner, W.H. '29
Hupalo, W.T. '62
Kuti, A.J. '35
Lester, H.J. '67
Markley, A.C. '29
McGall, E.C. '50
Neal, W.P., Jr. '58
Owen, G.E. '29
Sandercox, R.A. '51
Taylor, C.R. '47
BETA DELTA MARSHALL
Boon, M. '49
Britton, G.R. '49
Goodman, E.C., II '53
Henderson, C.C. '29
Kitchen, W.S. '29
Mills, W.W. '32
Winter, P.C. '31
BETA EPSILON LEHIGH
Abel, R.W. '51
Allison, W.C. '73
Ambrogio, J.N., Jr. '39
Buckler, E.S., Jr. '30
Dworski, L.D. '66
Geesey, R.A. '55

Honor roll

Gleichmann, T.F., Jr. '57
Graham, W.O., III '73
Greene, R.E. '70
Hamilton, R.W. '52
Haviland, R.L., Jr. '60
Heilman, E.H., III '59
Holyoke, J.P. '42
Hovanec, G.A., Jr. '72
Langenberg, F.C. '47
Lewis, G.B. '63
Looloian, J.K., Jr. '68
Loux, H.A. '48
Lutz, J.C. '73
Mahoney, J.E. '73
Markle, P.J. '59
Marsden, R.D. '37
Meyer, H.M. '49
Miller, L.H. '40
Moskowitz, J. '47
Mountster, J.S. '46
Paliwoda, W.M. '70
Pors, L.R. '70
Quinn, J.J., III '74
Rankin, C.D. '30
Schultes, J.F., Jr. '73
Shepherd, R.M. '38
Smith, T.S. '71
Sunderland, D.E. '62
Troxel, D.E. '70
Volpe, R.J. '72
Von Dreusche, C.F., Jr. '49
Weber, E.H. '53
White, E.T. '39
Widmer, K. '34
Wise, B.A. '70
Young, P.C. '58
Zacharchuk, W.V. '46

BETA ZETA
N.C. STATE
Coward, W.B. '38
Galba, E.P. '31
Hoffman, J.R. '76
Lindstrom, J.H., Jr. '30
Lovelace, E.K. '36

BETA ETA
U. N. HAMPSHIRE
Goldwell, H.I. '31
Hedman, S. '31

BETA THETA
RUTGERS
Agolia, M.A. '73
Allen, F.H. '57
Asay, G.W. '33
Baumer, E.F. '31
Bills, C.T. '48
Brofazi, F.R. '51
Eisenman, R.W. '73
Fritts, T.W. '66
Geck, R.C. '58
Ghiorse, P.L. '65
Gilde L.C., Jr. '47
Gordon, J.F., Jr. '35
Holloway, G.E., Jr. '31
Kidd, H.W. '54
Kramer, C.R. '31
Kramer, G.A. '31
Kunigonis, J.J. '71
Kuzsen, F.N. '37
Magee, W.C. '69
O'Neill, J.F. '62
Orrico, J.L. '70
Ort, G.H. '31
Pannucci, J. '68
Petty, R.K. '31
Pfleifer, D.M. '62
Putz, R.H. '52
Seponara, F.C. '64
Somers, G.M. '49
Spencer, F.C. '32
Teichman, W.A. '33
Van Dien, F. '58
Wheaton, R.H. '40

BETA IOTA/TUFTS
Abdu, L.M.D. '37
Berube, C.R. '48
Bolger, J.L. '40
Clark, C.R. '46
Dahlen, K.E. '38
Huening, P.C. '65
Klitzke, M.R. '51
Miller, D.L. '65
Rollins, E.B. '31
Stevens, D.E. '49
Taormina, E.R. '43
Virginski, W.B. '61
Ward, W.R. '36

BETA KAPPA
CENTRE
Adams, M.W. '32
Bedinger, G.G. '32
Willett, J.R. '32
Williams, P.A., Jr. '32

BETA LAMBLA
ST. JOHN'S
Woodman, R.G. '32

BETA MU
WAKE FOREST
Bridger, R.L., Jr. '41
Britt, L.J., Jr. '51
Durham, L.D. '36
Eudy, R.L. '74
Gray, P.J. '65
Harrell, V.H., Jr. '39
Hutchinson, T.S., Jr. '68
Koether, G.H., III '68
Kraus, G.P. '72
Lanford, C.G. '58

Matthews, T. '22
Paris, J.C. '69
Preuette, I.C., Jr. '46
Punger, D.S. '66
Ryan, J.T. '59
Sacrinty, N.W. '44
Small, L.C. '51
Spears, J.I. '62
Turner, J.C. '52
Via, W.G. '63
White, W.R. '54
Williams, C.E. '49

BETA NU
W.V.A. WESLEYAN
Birrell, R.G. '34
Cody, N.F. '33
Gaston, W.R. '48
Hymes, C.M. '47
McCourt, E.H. '33
Mellott, G.M. '33

BETA XI
HARTWICK
Andersen, T.D. '70
Cody, L.A. '54
Colihan, W. '72
Gerots, R.H. '70
Hallock, F.J. '73
King, D.C. '68
Kirk, J.T. '68
Loweth, W.A. '70
Smith, J.E. '61
Swift, R.F. '59
Williams, R.W. '48

BETA OMICRON
TRI-STATE
Alfieri, J.E. '53
Bryan, R.R. '63
Chadwick, L.J. '68
Crittton, D.N. '59
Deyoe, H.B. '37
Eckstrom, W.R. '52
Franconi, A.M., Jr. '67
Harrison, K.A. '73
Johnson, J.E. '59
Joiner, T.H. '61
Klee, J.J. '57
Lewis, W.R. '60
Lienesch, G.W. '41
Market, T.L. '69
Maxel, J.M. '57
McGuire, R.C. '46
McWat, D.H. '54
Nitta, G.S. '69
Orr, C.E. '39
Philipp, F.A. '57
Reichert, R.F. '64
Remington, J.W. '39
Riegel, T.E. '68
Smith, J.R. '61
Smith, R.L. '67
Stewart, J.I. '56
Tejan, R.U. '63
Thompson, R.S. '57
Tierney, E.R. '71
Williamson, E.W. '71

BETA PI/FRANKLIN & MARSHALL
Bair, C. '40
Snyder, C.F., Jr. '41

BETA RHO/TOLEDO
Ackland, T.R. '60
Allen, J.K. '41
Anderson, R.T., Jr. '52
Andre, G.J. '63
Aredy, J.M. '52
Bensch, A.C. '65
Boor, R.L., Jr. '55
Braun, R.D. '58
Braymaier, D. '47
Butler, J.A. '57
Celino, F.A. '63
Coen, W.P. '50
Douglas, A.G. '51
Fitts, M.R. '73
Fruth, L.L. '69
Gregor, J.H. '50
Haden, J.W. '59
Hagele, R.G. '49
Hess, P.F. '68
Hettrick, H.H. '37
Hutchinson, J.R. '62
Jarrett, T. '44
Lange, W.H. '59
Maher, D.R. '53
Myers, J.S. '61
Myers, W.G. '47
Pfander, L.V. '49
Poirier, T. '62
Redmond, R. '65
Sampson, R.D., Jr. '61
Stall, H.P. '61
Syring, M. '60
Weik, F.J. '64

BETA SIGMA
U. CINCINNATI
Ayers, M.V. '37
Beck, D.R. '55
Beecroft, W.G., Jr. '55
Boulmetis, S.N. '62
Brettschneider, D.J. '69
Catiller, J.B. '56
Cohron, G.P. '72
Durst, N.J. '37
First, T.E. '54
Grunkemeyer, J. III '73
Honious, G.L. '61
Murphy, D.W. '64
Nedderman, W.H., Jr. '65
Niehus, D.C. '68

Niemeyer, A.R. '61
Peake, D.W. '68
Salomon, S.M. '67
Sanner, G.W. '63
Schock, D.L. '69
Seeger, R.W. '54
Smith, L.C. '64
Stanley, R.B. '57
Vanatta, H.C. '37
Weismann, W.S., III '63
Zimmerman, W.R. '65

BETA TAU
WAYNE ST.
Adams, T.F. '56
Axel, H.C. '46
Burke, W.C. '46
Chance, J.H., Jr. '40
Croc, R.A. '47
Dill, C.H., Jr. '50
Dobson, R.C. '42
Gannon, P.W. '52
Gardner, C.W. '51
Heller, J.A. '42
Hotchkiss, G.D. '56
Hobart, L.W. '47
Kopka, D.F. '48
Kriewald, R. '50
Leonard, J.K. '52
Lowe, C.E. '47
Orlans, J.H. '69
Schneider, A.E., Jr. '56
Scott, T.M. '38
Sincok, F.A. '50
Stevens, W.D. '56

BETA UPSILON
MILTON
Barranco, W.S., Jr. '65
Gerhardt, S.H. '71
Kirkwood, J. '67
Moss, M.S. '66
Mugger, T.C. '49
Primrose, L.C. '70
Putman, W.H. '64

BETA PHI/WOFFORD
Mitchell, W.H., Jr. '41

BETA CHI/AMERICAN
Anglin, W.M. '49
Barkdull, W.L. '40
Buck, T.R. '48
Bullard, D.K. '61
Green, D.C. '66
Jeffrey, J. II '51
Kashishian, S.G. '76
Mann, F.L. '43
Marino, F.T. '40
Springob, H.K. '48
Stulak, J.N. '66
Stutz, F.W. '60
Travaglini, J.P., Jr. '66

BETA PSI/R.P.I.
Mackey, L.B. '47
Merrill, T.H. '70
Nava, E.L. '61
Olender, E.J. '67
Smith, G.T. '43
Vennett, R.M. '61

GAMMA ALPHA
OHIO NORTHERN
Blair, J.F. '68
Ciaston, S.M. '72
Emerson, J. '65
Fender, F.D. '38
Fornadley, G.T., Jr. '55
Frantz, D.L. '69
Gourley, J.J. '54
Green, T.A. '67
Guillozet, J.L. '66
Hansen, H.J. '46
Hosack, J.L. '63
Hytree, D.C. '61
Kubis, R.J. '67
Kuhn, R.R. '49
Long, E.E. '64
Miller, W.C. '50
Schaffner, C.R. '72
Smith, V.L. '66
Sponseller, H.R. '55
Thomas, B.A. '73
Van Dyne, J.R. '72
Vogt, T.F. '69
Von Fultz, B. '49
Walton, S.L. '73
Weaver, W.W. '67
Wilcox, B.J. '72

GAMMA GAMMA
U. CONNECTICUT
Antes, J.E. '51
Barton, R.R. '64
Brockett, W.H. '51
Clark, A.M., III '60
Crady, C.K., III '66
Donahue, F.H. '49
Griswold, D.E. '50
Korponai, D.A. '63
Matarazzo, S.C. '62
Murphy, L.P. '32
Primavera, R.E. '54
Rilpey, W.C. '50
Schott, E.E. '51
Silver, J.L. '43
Williams, T.L. '66
Zisk, E.J. '51

GAMMA DELTA
DAVIS & ELKINS
Armitage, J.L., I '57
Arndt, R.F. '61
Bunnell, R.B. '49
Cathie, W.C. '63
Dakes, M.G. '56
Deacon, D.B. '63

Greer, R.C., III
Grote, R.A. '62
Gudg, W. '49
Hart, D.C. '70
Lefebvre, A.F. '59
Libby, W.R. '49
Little, J.C. '51
Renner, E.H. '49
Reynolds, A.J. '49
Schmidt, A.F. '57
Schollhammer, D.J. '72
Shaffer, E.J. '64
Skelly, E.J., Jr. '53
Taylor, F.G. '59
Testas, L.J., Jr. '55
Thoburn, T.J. '61
Woodworth, D.M. '61

GAMMA EPSILON
BUFFALO
Anderson, T.M. '62
Bamberg, C.A. '55
Barrett, R.E. '62
Barrett, W.J. '50
Botula, C., III '65
Bunge, K.E. '66
Ferlisi, J.A. '52
Harrigan, C.M., Jr. '51
Nielsen, J.N. '62
Pepe, P.A. '56
Pfeiffer, T.L. '61
Planavsky, R. '64
Scarmnach, C.A. '63
Tennant, P.A. '65
Terlecky, P.M. '62
Thiel, B.W. '66

GAMMA ZETA
BOWLING GREEN
Blackmore, L.M. '52
Cameron, W.A. '50
Conrad, C. '66
Daily, D.M. '66
Group, G.G. '50
Krotz, G.R. '50
Marchand, J.W. '50
McFerren, S.J. '72
Orr, R.D. '69
Pokorny, G.R. '50
Ryder, G.J. '50
Summey, L.J. '50

GAMMA ETA
WASHINGTON U.
George, W.R. '57
Kappel, J.C., Jr. '58
Lance, G.H. '51
Mitchell, G.L. '61

GAMMA THETA
OF MIAMI
Riddle, P.J., III '52

GAMMA KAPPA
U. ARIZONA
Alquist, J.W. '59
Austin, E.P. '55
Cartwright, J.M. '66
Hofer, M.M. '67
Muir, A.L. '56
Steinwachs, D.M. '67
Tokuyama, H.H. '62
Zeitler, L. '67

GAMMA KAPPA
MICHIGAN STATE
Abramczyk, T. '61
Ash, F. '62
Gregg, O.W. '61
Kappeler, A.A. '56
Leindecker, J.P. '58
Mehas, M.P. '62

GAMMA LAMBDA
ATLANTIC CHRISTIAN
Barefoot, W.T. '53
Boykin, M.I. '58
Caldwell, W.M., II '73
Capel, E.A., Jr. '67
Etheridge, N.L. '58
Gliarmis, L.S. '58
Langley, A.L., Jr. '64
McGilvray, B.F. '73
Norman, C.E., Jr. '70
White, J.W., Jr. '73

GAMMA MU
CHARLESTON
Alexander, G.W., III '64
Belknap, L.K. '68
Buckalew, J.L. '68
Clarke, R.D. '65
Cox, W.E., II '60
Dewitt, D.E. '60
Holliday, R.J. '63
Marcklioli, J.P. '67
Mooney, R.L. '68
Pereira, E.M. '65
Pond, D.R. '68
Roberts, B. '62
Siegel, R.A. '66
Spardaro, G.M. '63
Sutton, K. '64
Tunajek, J.R. '60
Wall, C.I. '60

GAMMA NU
SACRAMENTO STATE
Carston, A.J. '63
Howell, R.C. '62
Monk, L.P. '60
Petersen, M.R. '67
Sipes, S.R. '63

GAMMA XI
WIDENER
Cullin, R.G. '71
Detskan, R.T. '68
Curney, H.C., Jr. '69
French, B.D. '70

Fuini, D.L. '64
Haydt, C.J. '67
Knapp, P.J., Jr. '73
Lawrence, G.R. '62
Linial, A.Z. '68
Lore, J.G. '67
Lotter, G.C. '66
Noble, C.D. '67
Pfleife, W.G. '64
Pherson, J.W. '67
Priebe, D.A. '62
Pye, D.T. '62
Rainey, R.G. '67
Ricci, V.B. '62
Snyder, G.P. '69
Szeg, S.D. '69
Valent, T.F. '65

GAMMA MICRON
TULANE
Allison, T.E. '71
Barlow, W.L. '64
Burkett, W.D., Jr. '71
Burton, W.D., Jr. '67
Krupsky, J.W. '68
Laclede, R.P., Jr. '71
Matt, H.Jr. '63
Reid, J.S. '68

GAMMA PI/FINDLAY
Apple, C.M., III '72
Garvey, C.F. '68
Reber, W.S. '68

GAMMA RHO
LYCOMING
Cone, J.V. '66
Dinger, R.E. '71
Herchenrider, M., Jr. '71
Hoover, T.G. '65
Kern, C.A. '70
Langdon, W.H. '65
Schaeffer, P.B. '68
Wiltsee, A. '66
Wineriter, G.L., Jr. '71

GAMMA SIGMA
DETROIT INST. OF TECH.
Barton, B.G. '68
Barton, G.G. '68
Lethemon, W.G. '66
Standish, J.G. '67

GAMMA TAU/INDIANA
INST. OF TECH.
Bohlim, R.C. '72
Eversole, K.B. '71
Haley, P.F. '70
James, E.A. '72
Rauscher, K.R. '70
Richard, J.D. '70
Shupler, R.S. '72
Vitko, R.P. '71

GAMMA UPSILON
EASTERN MICHIGAN
Cabello, R.G. '70
Johnston, R.S., Jr. '68
Pearsall, A. '66
Proctor, N.W. '70
Schiller, R.A. '66

Sibert, B. '66
Stegeman, J. '66

GAMMA PHI
CONCORD
Bailey, G.W. '71
Carter, L.M., III '66
Davis, R.C. '68
Mann, M.L. '73
Randell, S.R. '72

GAMMA CHI
INDIANA
Beeman, G.L. '68
Boruff, J.H. '67
Cable, J.D. '67
Caulbe, A.L. '70
Chaney, J.R. '67
Grise, L.M. '70
Kariya, J.P. '73
Levy, M.L. '72
McKay, J.T. '68
Nedoo, L.M., Jr. '67
Nugen, B.R. '67
Paulsen, D.L. '67
Schalliol, D.E. '68
Sunderman, M.R. '70
Wahman, F.L. '73

GAMMA PSI
LAWRENCE TECH.
Churchill, G.D. '67
Dawley, R.S. '72
Judge, B.P. '67
Nark, M.B. '68
Schwartz, C.B. '68
Weir, T.K. '67

DELTA ALPHA
TAYLOR
Bleser, R.P. '70
Brophy, J.M., III '68
Brown, M.D. '70
Klos, C.P. '70
Laubhan, D.A. '68
Longhini, D.A. '68
Connell, J.K. '68
Stansbury, R.A. '75

DELTA BETA
NORTHERN MICHIGAN
Allworth, J.H., Jr. '70
Deland, T. '70
Mercure, R.S. '71
Weslien, J.E. '69

DELTA GAMMA
TARKIO
Goldstein, M.D. '71
Haley, P.F. '70
James, E.A. '72
Rauscher, K.R. '70
Richard, J.D. '70
Shupler, R.S. '72
Vitko, R.P. '71

DELTA EPSILON
RIO GRANDE
Smith, T.E. '72
Taylor, H.C. '73
White, S.E. '74

Smith, C.D. '62

MISSOURI VALLEY
Saville, L.J. '73
Winagar, J.C. '56

PURDUE
Alexander, D.H. '65
Breece, L.A. '39
Collier, E. '39
Deardorff, K.A. '70

WAGNER
Grossman, S. '62
Newberg, F.G. '62

STEVENS TECH
Bison, R.J. '63
Bradshaw, R.W. '69

PRESBYTERIAN
Beckham, R.S. '28
Dunlap, D.T., Jr. '59

MOUNT UNION
Soldo, B.A. '50
Yaggi, J.S., Jr. '35

LEHIGH
Chew, E.P., Jr. '51
French, H.W. '47
Lynch, J.E. '70
Swatt, K.E. '68
Underhill, J.B. '51

RUTGERS
Krohel, G.B. '68
Tietz, R.G. '75
Yablonicky, L.R. '65

CENTRE
Robinson, J.H., Jr. '36

WAKE FOREST
Cannon, D. '62

WEST VIRGINIA
WESLEYAN
Booth, H.W. '45

HARTWICK
Bang, C.D. '72
Gourley, H.J. '35
Gregory, M.L. '73
Kratoville, H.J., Jr. '50
Lisuzzo, S.J. '73
Schell, O.S. '73

TRI-STATE
Carlson, E.R. '44

BETA PI/FRANKLIN & MARSHALL
Anstaett, H.B. '37

TOLEDO
Maher, D.E. '65
Root, R.C. '64

U. CINCINNATI
Eberl, P.H. '72

MILTON
Campion, J.P. '68
Temke, C.M. '72

AMERICAN
Burch, T.A. '63

R.P.I.
Austin, K.J. '74
Reilly, J.M. '69

OHIO NORTHERN
Allen, N.L. '50
Clapper, C.D. '68
Fasolo, J.G. '50
Pentarek, M.G., III '72

CARTHAGE
Paton, H. '27

CONNECTICUT
Treat, R.H. '67

DAVIS & ELKINS
Fulmore, I.E. '64
Gorham, G.J. '74
Hudson, G.N. '63
Morgan, H.M. '52
Wendling, I.P.C. '50

BUFFALO
Gia Quinto, R.M. '59
Kritz, S.R. '66
McCurdy, R.C., Jr. '53

BGSU
Fruth, S.W. '69

CHARLESTON
Cavis, A.I. '65
Keller, R.G., Jr. '63

WIDENER
Conroy, F.P. '77

FINDLAY
Tarr, C.T. '72

LYCOMING
Bartlow, K.P. '65
Lemke, J.D. '69

CONCORD
Strick, G.E. '70

LAWRENCE TECH.
Fitzpatrick, P.J. '69
Oldberg, R. '70

LOYOLA
Cesaro, V.E. '70
Liebentritt, D.J. '70

Moving? Save 50¢

It costs Alpha Sigma Phi more than 50¢ every time the Post Office provides a new address (or simply says you've moved, but it doesn't know where.) Help save the Fraternity real dollars by reporting address changes well in advance. Send to Alpha Sigma Phi, 24 West William Street, Delaware, Ohio 43015.

Alpha Sig Parents: While your son is in college, his *Tomahawk* is sent to his home address. We hope you enjoy it. If he is no longer in college and is not living at home, please send his new address to the address above. Thanks!