

Summer, 1981



The response to the time-honored ideals of Alpha Sigma Phi by today's undergraduates has resulted in an unprecedented demand for more services and programs as young men seek growth through the Fraternity. To meet those needs and the opportunity to

offer a positive force in thousands of lives will require the involvement of alumni and an expanded role for the Fraternity's educational foundation, the Memorial Fund. (Kent Porter Photo.)

Today's Alpha Sig: Hungry for ideals, eager for growth

"They are more serious. They are searching for their place in this complex society."

Charles M. Slinghoff Jr., *Lehigh '59*, made that statement, commenting about today's undergraduates versus undergraduates of his college days. Slinghoff had just been presented with Delta Beta Xi recognizing his eight years as treasurer of Beta Epsilon's alumni board.

The statement—and Slinghoff himself—represent the dramatic, dynamic and challenging change that Alpha Sigma Phi has been undergoing in the last several years.

In a nutshell, it means that undergraduates are hungry for the ideals and principles that Alpha Sigma Phi represents. They are eager for the Fraternity to play an expanding role in their lives, they are looking to the Fraternity to help them grow. That hunger and eagerness is presenting historic opportunities for Alpha Sigma Phi. In terms of the impact it is having on the character development of thousands of individuals. And in terms of expansion of both programs and chapters.

Meeting those opportunities has resulted in an organization that is doing more for and with its members probably than at any time in its history. This unparalleled activity has resulted in an expanding role for the Memorial Fund of Alpha Sigma Phi and for the Fraternity's alumni.

How is this being evidenced?

Leadership development—Undergraduates

see Alpha Sigma Phi as a major part of their educational experience, an opportunity to learn and explore things they aren't getting in the classroom. This August, for example, record-breaking numbers attended the Fraternity's National Educational Conference which is underwritten by the Memorial Fund, the educational foundation of Alpha Sigma Phi.

The delegates to the conference tackled tough subjects they had requested. Programs on proper use of alcohol, ways to set and maintain high moral standards in their chapters, methods of carrying out responsible financial management.

Scholarship—Chapters are requesting workshops on scholarship development, help on setting up tutorial programs. They have asked that the Fraternity establish graduate fellowships.

Ritual—Ritual workshops are very popular at national meetings and chapters are asking the Fraternity for training on how to properly present the exemplification of Alpha Sigma Phi ideals. Undergraduates have asked for a new edition of the ritual.

Career Development—Members are using the Fraternity as a forum for exploring career choices and for learning about the free enterprise system. They are asking for program materials and guidance in this area from Headquarters and alumni.

Service—Undergraduates insisted on a new standard for chapters that includes a

minimum of two community service projects a year as a way to learn about good citizenship. Chapters are looking to the Fraternity for guidance on organization and management of those projects.

Housing—Undergraduates are taking a serious interest in their houses, lodges or suites. They see the management of these properties as a learning lab in business practices. So they are looking to their alumni and to Headquarters for increased guidance and services as they seek to learn about maintenance, insurance, mortgages and budgeting.

Chapter growth—Chapters are increasing their numbers of pledges and initiates. More men mean requests for help in running

Continued on Page 2

On the inside

Alpha Sigma Phi's chapters across the country are growing and adding exciting new dimensions. A record number of chapters are reporting in this issue. You'll want to read about them all and share in the pride of their accomplishments. Reports start on **Page 3**.

Is your name here? The 1980-81 Loyalty Fund salutes those whose gifts make it possible to share the ideals of the "Old Gal" with more and more men. There's special recognition for those who are Founders and members of the new Anniversary Club. See **Page 12**.

Alumni news. There's none in this issue, making room for chapter reports and the Loyalty Fund report. Alumni news returns in next issue. Now's the time to send in your news, along with a photo. Send to *Alpha Sigma Phi, 24 West William Street, Delaware, Ohio 43015*.

Today's Alpha Sig: Hungry for ideals, eager for growth

Continued from Page 1

larger, more diverse programs.

Fraternity growth—As the Fraternity "to better the man," Alpha Sigma Phi is being asked to establish or revive chapters at a rate that is beyond the current availability of staff and volunteers. The Fraternity's expansion program has resulted in fourteen groups in four years.

Is all this just a passing phase?

"I don't think so," says **Executive Director Rob Sheehan**. "There is a lot of pent-up need and demand. But I foresee it continuing. Colleges and universities see their role now and in the future as academic centers. For many reasons, they can't and won't seek to set and teach high moral standards. They must be concerned with large numbers. We're concerned about the individual and the education of the whole person."

The eagerness of undergraduates for the Fraternity to play an expanding role in their lives has made the Fraternity's Headquarters a beehive of activity. Chapters are requesting more visits, workshops, publications and guidance. The phone rings constantly; mail comes in great stacks.

"It's as though we spent 135 years learning so we could serve this and future generations in a special way," says Sheehan. "We are offering changeless ideals in a changing society."

Due to demand, the Fraternity is stepping up its recruitment of alumni to offer the guidance needed. And the Memorial Fund is gearing up to add the financial resources required to provide the educational programs requested. Current funds are no match for

the needs of the Fraternity.

"It's exciting. Sometimes it's overwhelming," says Executive Director Sheehan. "But if we truly believe in our ideals, we'll find the people and the resources. That's part of the Alpha Sig tradition, too!"

Omega Chapter

(The *Tomahawk* does not assume responsibility or liability for the accuracy of Omega listings. Information, from various sources, is printed as it is reported to the National Headquarters for record keeping purposes.)

Harold R. Smith, Michigan '16, Grosse Pointe, MI. An attorney, he received the Delta Beta Xi key in 1940. He was a member of the Grand Council, 1948-1950.

Gamma—Quincy A. Bagg, '19, South Hadley, MA; Currie H. Downs, '37, Rowley, MA; Ray G. Smiley, '23, Sterling Junction, MA. **Delta**—Robert Broughton, '36, Marietta, OH. **Epsilon**—Raymond H. Stansberry, '24, Upper Sandusky, OH. **Theta**—MacQuorn S. Nuttall, '17, Plaquemine, LA; J. R. Swanson, '22, Bloomfield Hills, MI. **Iota**—William C. Agnew, '29, Rochester, NY; Norman F. Hunt, '22, Branchport, NY; Albert S. Quinn, '27, Bellvue, WA.

Lambda—Rufus J. Rickenbacher, '19, Maplewood, NJ. **Mu**—Stuart C. Gillespie, '30, Seattle, WA; Carl A. Luecken, '25, Mesa, AZ; P. J. Watkinson, Jr., '37, Newport, OR. **Nu**—F. Leroy Hill, '14, Rockford, IL. **Phi**—William V.

The *Directory of Alpha Sigma Phi* is off the press and is being distributed to the thousands who purchased the book. The national directory provides geographical listings and chapter listings with current addresses and occupational information of those who responded to special mailings and telephone contact. If you ordered a copy (available only to members of Alpha Sigma Phi) and it has not arrived, contact Doreen Luff, Customer Service Representative, Bernard C. Harris Publishing Company, 170 Hamilton Avenue, White Plains, N.Y. 10601.



Education of the whole person is what Alpha Sigma Phi is providing. Members are looking to the Fraternity and its alumni for guidance in many aspects of their lives. They find in Alpha Sigma Phi changeless ideals in a changing society. As undergraduates seek an expanding involvement in their lives from the Fraternity, the "Old Gal's" alumni and its educational foundation, the Memorial Fund, must step up their activity as well. (Tyler Cox photo.)

Record, '40, Tucson, AZ. **Alpha Alpha**—Homer L. Ramsey, '26, Houston, TX. **Alpha Omicron**—Henry C. E. Bartels, '51, Kansas City, MO. **Beta Epsilon**—George A. Hrivank, '46, Cherry Hill, NJ. **Beta Mu**—Morrell C. Tatum, '38, Charleston, WV. **Beta Tau**—Jack W. Butler, '54, West Bloomfield, MI. **Gamma Kappa**—Marvin C. Rank, '55, Harper Woods, MI.

Memorial Gifts

The memory of brothers who enter Omega Chapter may be honored by contributions to the Alpha Sigma Phi Memorial Fund . . . gifts that live on by underwriting the scholarship and educational programs of Alpha Sigma Phi.

Mrs. E. H. Conroy (wife) in memory of Edward H. Conroy, Stanford, '26, Everest, KS.

Cullen P. Calaway, Ohio State '19, Toledo, OH, in memory of Norman E. Beck, Ohio State '21, Toledo, OH.

Robert W. Kutz, University of California '67, Bakersfield, CA, in memory of Gen. Joseph Berry, Oregon State '63, Corvallis, OR and Alvin Ulbrickson, Washington '23, Seattle, WA.

Mrs. Orren W. Pierce (wife) in memory of Orren W. Pierce, Illinois '25, Gibson City, IL.

T. P. Wadsworth, University of California '13, Berkeley, CA, in memory of F. Leroy Hill, University of California '14, Rockford, IL.

THE TOMAHAWK

Vol. 80, No. 1 (USPS 617-920)

Summer, 1981

Member, College Fraternity Editors Association

The *Tomahawk* is the oldest college fraternity publication. It first appeared in November 1847 at Yale College and continued until the college suspended it in 1852. Since its revival in April 1909, it has been published continuously.

Editor

Evin Varner

Business Manager

Rob Sheehan

Managing Editor

Carol Hallenbeck

Alumni News

Tyler Cox

Circulation

Brenda Hopkins

Chapter Reports

Eric Jacobson

The *Tomahawk* is published quarterly by the Ellwood City Ledger, Ellwood City, Pa. U.S.A. for Alpha Sigma Phi Fraternity. Fifty cents a copy. Life subscription \$15.00. All remittances should be made payable to Alpha Sigma Phi Fraternity, 24 West William Street, Delaware, Ohio 43015. Second class postage paid at Delaware, Ohio, and at additional mailing offices. Composition services by Compolith Graphics, Indianapolis, Indiana.

Postmaster: Change of address form No. 3579 should be sent to Alpha Sigma Phi, 24 West William Street, Delaware, Ohio 43015.



Volunteer **Eric Jacobson, Michigan '74**, Quincy, Illinois, assisted in the preparation of the chapter reports appearing in this issue. You'll see his by-line on other articles in *The Tomahawk* from time to time. He is a public relations staff member of Harris Corporation, Broadcast Products Division. (You can volunteer to help in the Fraternity's publications program or any other area. Just drop a note to Headquarters.)

Coast to coast, chapters present exciting updates

Alpha Sigma Phi and the Phoenix soared high this past school year. The chapter reports are proof!

And there's an all-time high in number of chapters reporting! Three cheers for that good showing.

Undergrads—read more than just your chapter's news. Read other reports to learn why some chapters honor alumni at homecoming and why others honor brothers with steak dinners. You'll discover effective rush tactics, new ideas for profitable fund-raisers, and attention-getting community service projects. You'll learn how some chapters captured the respect of the school and the neighbors. And you'll read of some outlandish theme parties.

And alums—read many reports to appreciate the broad scope of this country-wide, impressive Fraternity. Perhaps you'll spot a chapter activity you'd like to see at your chapter.

Incidentally, chapters completing the yellow Tomahawk chapter report forms as requested by the national office, have longer reports in most instances.

Here's to good reading . . .

Province I

Province Chief: James Hammond, Washington '66

Province President: Larry Andrews, Oregon State

Mu University of Washington

1981 saw the birth of a new alumni association at Mu. At Founder's Day Mu finalized plans for the rejuvenated alumni group and now encourages all alums to help put "u" back in Mu.

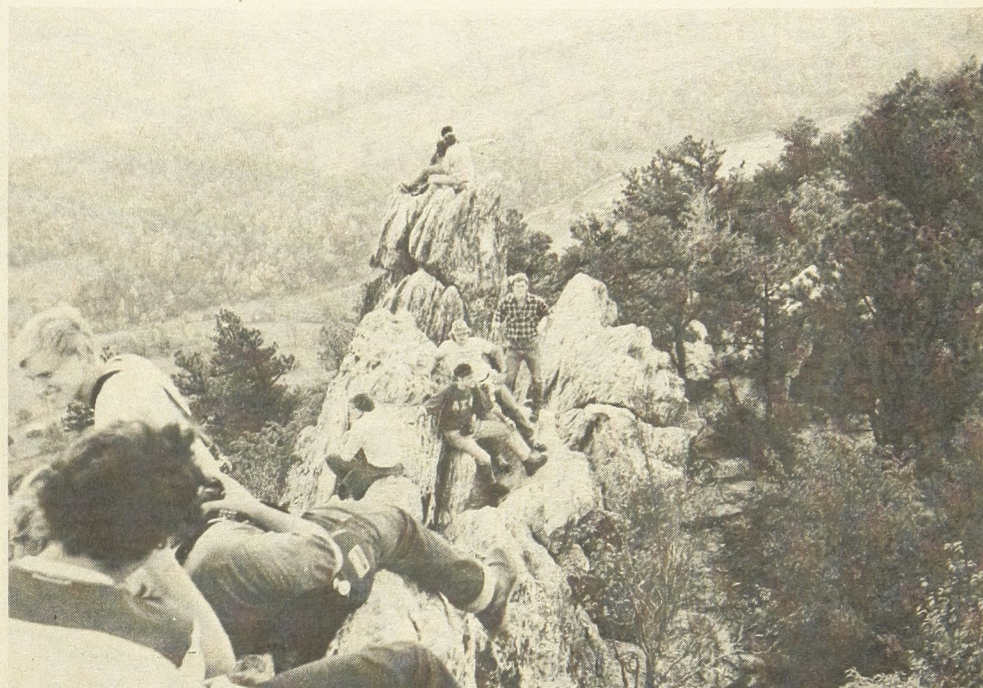
A three-year plan to make major improvements to the chapter house, the oldest fraternity house at the university, also took effect.

On the lighter side, the brothers enjoyed various theme parties—Cowboy and Iranians, Come As Your Favorite Olympic Athlete, and Get Ashed (inspired by Mt. St. Helens).

Last spring, twelve brothers took to the air to skydive. And in more traditional sporting activities, the men kicked their way to become the intramural soccer champs. Mu men also participated in varsity tennis, JV basketball, and rowing.

This summer, twelve brothers are employed in Alaska in the seafood industry, while undergraduate Bob Ratliffe is working in Washington, DC for congressman Joel Pritchard.

In the forecast is September's retreat,



Delta Theta chapter, Radford University, demonstrates that Alpha Sigma Phi is reaching new heights. The chapter takes frequent overnight hiking trips into the Virginia mountains. Wearing the Alpha Sig shirt in photo center is chapter advisor Dr. Robert Gill, a member of the Radford faculty. This most active advisor is not an

Alpha Sig however—he's a member of Delta Upsilon fraternity. The Radford chapter has also headed to the mountains to hold long range planning retreats as Delta Theta has continued to grow since its recent chartering. Chapter retreats and workshops on many subjects are often requested by chapters of Fraternity Headquarters.

when the men will determine the path Mu will take in 1982.

Nu University of California at Berkeley

Having been officially colonized last May, Nu colony now has its sights set for a December 6, 1981 chartering.

The colony already has published a newsletter—Nu News, and participated in two social activities. One alumni/undergraduate picnic and one where brothers played ice hockey without ice skates. What's more, they used volleyballs instead of pucks and brooms rather than sticks.

Gone from the Berkeley campus since 1969, Nu now has a house rented, thanks to alumni help and hard work by over 30 pledges—all poised for what next year will bring.

Tau Stanford University

"Academics at Tau are top priority," says HSP **Ken Vereschagin**. And the chapter 3.4 grade point average is proof. Also, five of the chapter's 18 graduating seniors were elected to Phi Beta Kappa.

Fall quarter brought a large turnout at the Alumni Brunch. A tasty Christmas feast. And an eventful Founder's Day: **Eric Jonsson** earned the Bay Area Alumni Council's scholarship that memorable day.

Themes ranging from Ancient Greece to New Wave England highlighted the chapter's Thursday night "Cultural Series." And in the

spring, the men traveled to Napa Valley to sample fine wines.

Right now, Tau is busy rewriting its constitution and revamping the chapter's organizational structure.

Psi Oregon State University

"Getting Involved" was this year's motto at Psi. In community service, the brothers cut and stacked wood for a nearby home for the elderly. Later, they hosted Christmas and Easter parties for pre-school children. But, the most memorable service project came when the Psi men served as ushers, door and parking lot attendants at OSU's new cultural center.

On campus, brothers "got involved" by serving as IFC officers and other organizational leaders.

And in sports, PSI fielded teams in football, volleyball, bowling, tennis, soccer, basketball, wrestling and coed innertube water polo. "Great teamwork and spirit" paid off in a winning season in water polo and wrestling, according to **HAE Jeff Duewel**.

Psi is equally active socially, boasting several theme parties with sororities, including a Halloween costume dance. Paired with Pi Beta Phi sorority, the men sang Broadway hits at the annual IFC Sing.

Spring brought Dad's Weekend, a coed 25-mile relay race to the top of Mary's Peak, and the chapter's annual street dance.

For home improvements, Psi's pledge

Chapter Reports

"One of the things that took me by surprise was the fact that it really was a 'working' convention. The Fraternity is truly governed by the undergraduate chapters. The ritual exemplification brought out something that made attendance at the Convention worthwhile many times over. Delegates came from diverse backgrounds and locations . . . however our common experience, exemplified in the ritual, binds us as brothers. This

brotherhood at a national level is something I feel very privileged to have experienced. I was astounded by the caliber of men on Grand Council. All of them are eminently successful in their careers, and yet choose to devote great amounts of their time to the guidance of the Fraternity." —**Pete Rukavina, Purdue**, reflecting on his attendance at the 1980 National Convention.



Washington pledges collected \$200 and a plaque for taking part in an automobile economy test run. Charles Bernstein, left, of Mu chapter, accepts from Russell Van Rooy, center, president of the Automobile Club of Washington, and James R. Hammond, Washington '66, right, executive director of the King County Automobile Dealers Association. The chapter drove 50 different vehicles in a day long test roundtrip from Seattle to

Portland to demonstrate that new cars "do get good mileage." The plaque came from the National Automobile Dealers Association. This photo, by the way, appeared across the country in many national automotive publications. Hammond is Province I Chief and famed for his rush presentations at national Alpha Sigma Phi meetings.

classes painted and brothers installed a new \$3,000 fire alarm system. Thanks to alumnus **Bill "Crash" Coburn**, for installing a new lighting system in the dining room and basement.

Other highlights were new public relations and goal committees and a new pledge education program, featuring two pledge educators.

Finally, Psi's newest addition is a dog named—what else—"Phoenix."

Province II

Province Chief: Kent Porter, Missouri Valley '74

Province President: Brad Barling, Iowa State

Phi Iowa State University

Phi's brotherhood extended beyond chapter walls when it helped in the reorganizing efforts at Alpha Chi at Coe College.

Now, the chapter, along with Alpha Pi sorority, is making plans for sponsoring a tetter-totter marathon service project next year.

This year found the undergraduates with the second highest grade point average of all fraternities on campus, reports Phi's **Scott Allen**.

Alpha Alpha University of Oklahoma

If there's brotherhood, then there must be provincehood. And Alpha Alpha lives it. The chapter helped initiate men into Alpha Theta at the University of Missouri, Province II's newest chapter.

Back home, Alpha Alpha welcomed seven new pledges of its own last fall.

Heavily into sports, the undergraduates entered teams in football, volleyball, and racquetball. Later, a special golf tournament raised money for charity.

New on the scene is an improved scholarship program, featuring awards for "most improved" and "best" scholars.

In efforts to maintain constant contact with its alumni, the chapter publishes its newsletter, Alpha Hay, and each year invites alums to a homecoming cookout.

Alpha Omicron Missouri Valley College

A special community service project made '81 a year to remember. Brothers held their first annual clothing drive for the boys and girls of Butterfield Ranch in Richmond, Missouri. Students and the community donated clothes in collection boxes built and placed in high-traffic areas on campus by the chapter.

Fall brought 17 new pledges. October saw the chapter's annual fund-raiser Haunted

House. And December was highlighted by something new—Alpha Omicron's first ever Faculty Tea.

Spring formal and a Valentines Day party came later.

Now, the brothers are sending summer rush letters to all men enrolling at the college next fall.

Alpha Theta University of Missouri

Alpha Theta was chartered in October and is now reestablished at the University of Missouri.

Twenty-eight actives enjoyed several theme parties, including an old fashion toga party. Next came three community service projects—donating blood, assisting at the Jerry Lewis Telethon, and washing six campus bus stop shelters.

"Events like those are going to be part of next year's planned first annual **Phoneix Week**," says HAE **Don Hanlon**.

The chapter's first Black Lantern procession in 20 years overwhelmed the entire campus.

And to help raise money for the house, the men held raffles—including one where the prize was a spirit-filled pumpkin.

The men even sell cokes during campus football games to raise money for the chapter.

Alumni can share in Alpha Theta's new found pride at an alumni/undergraduate barbecue, planned for October. Information is available from **Dave Hampton** at (314) 874-1344.

Alpha Chi Coe College

"Our colonization banquet on May 3, signalled the beginning of great things to come," reports Alpha Chi.

Shortly thereafter, the men enjoyed an exchange dinner with Alpha Omicron Pi sorority.

The forecast calls for sprucing up the chapter room.

(Alpha Chi has benefited from the Fraternity Rebuilding/Expansion program.)

Gamma Omicron Tulane University

Costumes, apple bobbing and pumpkin carving were all part of Gamma Omicron's memorable Halloween party, given for 45 children from the Greater New Orleans area.

A large fall pledge class and the addition of fifteen new ladies into its Little Sisters group were two other landmark events at Gamma Omicron.

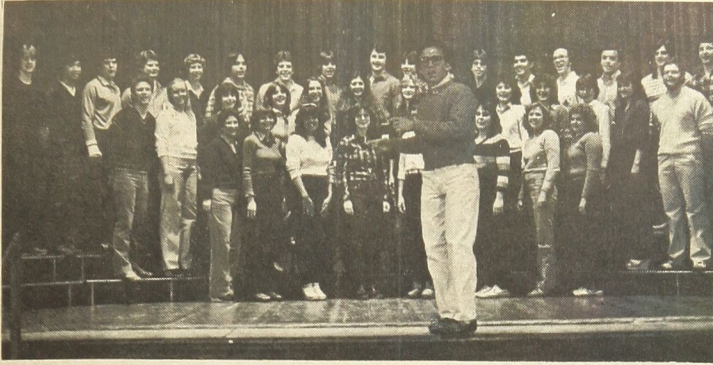
Province III

Province Chief: If you'd like to fill this important position, please contact Executive Director Rob Sheehan.

Province President: Jerry Flint, Purdue

Eta University of Illinois

Eta will benefit this year from the



Meet the Alpha Sigma Phi-Pi Beta Phi Singers. That's Psi's David Johnstone, the director, proudly leading the group. The singing ensemble was the hit of IFC Greek

Rebuilding Plan of The Fraternity's Expansion program, at the direction of the Grand Council and the co-operation of the chapter's alumni.

Alpha Xi Illinois Institute of Technology

Two important events milestone the year at Alpha Xi. First a whopping 70 alumni brothers returned for the chapter's annual Black and White festivities last December. And second, the undergrads helped in an out-of-state telethon sponsored by the school's office of admissions.

Alpha Pi Purdue University

Eight Alpha Pi men serve as campus or school group officers. Three play on varsity sporting teams. The chapter is ranked 11th out of 45 fraternities academically, and 32 joined the ranks at Alpha Pi this year, boosting membership to 77.

What's more, undergraduates hosted two parties for underprivileged children, aided Delta Gamma sorority at an all-Greek swim meet for charity, and beat in basketball, 59-56, the disc jockies of radio station WAZY in yet another fund-raiser.

On the social agenda were several theme

parties, including a 60's bash, a hoedown and the traditional Black and White.

Biggest highlight of all goes to the annual go-kart racing spectacular that drew crowds of thousands to the campus.

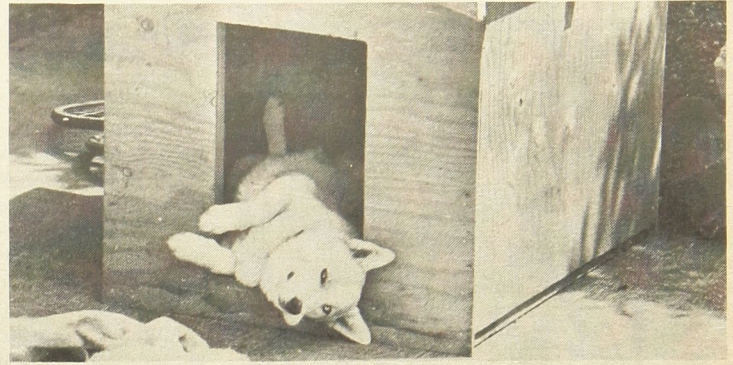
Up against 32 others Alpha Pi's car, driven by **Bill Shumaker**, was favored to win. A crash unfortunately put an end to that. But says Alpha Pi's **Kenneth Delaplane**, "It was the week before the Grand Prix that saw a closeness among brothers that was hard to equal. Everyone gave 110 percent."

That same dedication is now funneled toward summer rush, which includes a party following a Chicago Cubs baseball game.

Structurally, the house couldn't look better, reports Alpha Pi. The year brought a new bar, refinished paneling and doors in the dining room, and newly painted halls. And during a recent alumni corporation meeting the board members set five year goals which include many more major house improvements.

You can learn more about those through "The Grapevine"—the chapter's regularly published newsletter.

Looking back, the past year at Alpha Pi saw 250 alumni, wives, undergraduates and dates celebrating at homecoming. And the



Week with a presentation of Broadway Hits. At right is Psi's newest "member"—Phoenix who is lazily peering out of his "bachelor pad." Psi didn't report if Phoenix sings or not.

pride of the election of alumni brothers **Stan Miller** and **Don Morgan** to Grand Treasurer and Grand Councilor at last summer's National Convention.

Gamma Chi Indiana University

Pledges do the talking at Gamma Chi—through in-depth surveys administered at the end of each pledge education program. The men's frank answers are used to better the pledging experience at Gamma Chi. (And they're shared with chapter alumni via the Newsletter.)

Sixteen brothers were honored at a scholarship banquet and the chapter ranks fourth academically among 30 fraternities at IU.

Earlier, Gamma Chi sang its way to third place in Division A competition at the annual IU Sing. And six brothers participated in the eventful Little 500 bike race, now famous nationwide due to extensive TV and movie theater exposure.

The chapter sends its thanks to all alums who made donations that paid for new living room carpet and furniture.

Delta Alpha Loyola University

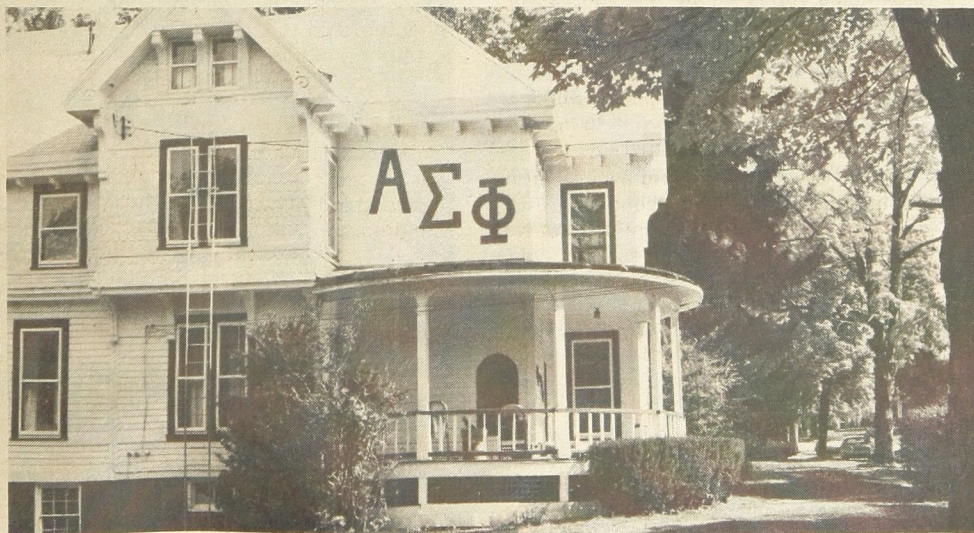
Delta Alpha set policy at Loyola this year. The IFC wholeheartedly adopted party guidelines devised by Delta Alpha. Those included limiting attendance, providing plenty of trash cans, employing reasonable music levels and notifying police, neighbors and school officials, *before* parties begin. The new rules have helped Delta Alpha in its neighborhood public relations efforts.

Says **Robert Passehl**, "We also raise from \$200 to \$300 for the chapter at these well-run all-university parties."

For even better relations with the neighbors, the chapter cleans sidewalks during the winters using shovels donated by the university.

In sports, the undergraduates captured titles in softball and football. The latter by defeating Alpha Delta Gamma 27-21 in four explosive overtimes.

For the house, there's new paint, repaired plumbing and new carpet.



What's big and sparkling white and has new storm windows and improvements all over? It's Beta Psi's house, one of two the chapter operates at Rensselaer Polytechnic Institute. And when the brothers aren't fixing up their house, they're busy on the ice rink, setting hockey records. An annual alumni-undergrad hockey game is a highlight of every year at Beta Psi.

Tom Druce, Alpha Nu, Westminster College, is making history. Because he is the first student in Westminster's history to be elected to a second term in the Student Association as president. Druce is a junior.



Read all about various chapter activities:

Beta Omicron Tri-State University

Beta Omicron is now twice as good. It doubled its membership this year. "We're definitely on the upswing," says the chapter.

Recent home improvements include a new garage roof and converting the furnace to gas—thereby avoiding increasing heating oil bills.

All the undergrads were plenty warm winter quarter, though, at the second annual beach party. Six inches of sand on the floor and 80 degree temperatures inside added authenticity. So did the 800-gallon hot tub outside!

New year's Spring Frolic will feature a 20-year reunion of the men initiated during/or around 1962. A "then" picture of that group of brothers appeared in the chapter's spring newsletter. Beta Omicron now wants those 1962'ers to pose for a "now" picture to be snapped at the upcoming Frolic.

Beta Rho University of Toledo

City invaded by Sigs! Beta Rho is host of the biennial National Education Conference, when Alpha Sigs will converge on campus to attend seminars on leadership, communications and scholarship, among others. Plans for that "once in a lifetime event," says Beta Rho has kept the men understandably busy.

But, normal operations didn't stop at Beta Rho. The chapter nabbed the all-sports trophy for the 20th year in a row, took second place in community service efforts, and clenched third in the campus Songfest.

This year, three undergraduates and alumni brother **Chris O'Connor** helped organize the popular University Jam I, a concert featuring fine rock bands from Toledo. That event was the hit of Spring Week 1981.

June brought the annual Sig Black and White. And there's a new house fund. Reports indicate the kitty now holds \$605. Nearly \$2,500, however, is needed to make the move to a bigger house. Interested alumni should contact the chapter on how to earmark a donation for that fund.

But until the move, Beta Rho has assumed new cleaning procedures, where the brothers clean the entire house in a day-long affair. Soon to follow will be lots of paint upstairs and down.

What a year!

Gamma Upsilon Eastern Michigan University

A large spring pledge class, a fulfilled homecoming and Black and White festivities, and sponsoring a night at a local bar in Ypsilanti were significant events this year at Gamma Upsilon.

Gamma Psi
Lawrence Institute of Technology
Gamma Psi didn't file a report this time.

Delta Beta Northern Michigan University

The ringing bells one heard in Marquette last Christmas was the sound of Delta Beta brothers helping the Salvation Army in its seasonal fund-raising activities.

Money making for the chapter, the undergraduates sold tickets and programs at university hockey and football games.

Province V

Province Chief: Chuck Vohs, Penn State '75

Province President: Mark Eisenzimmer, Ohio State

Zeta Ohio State University

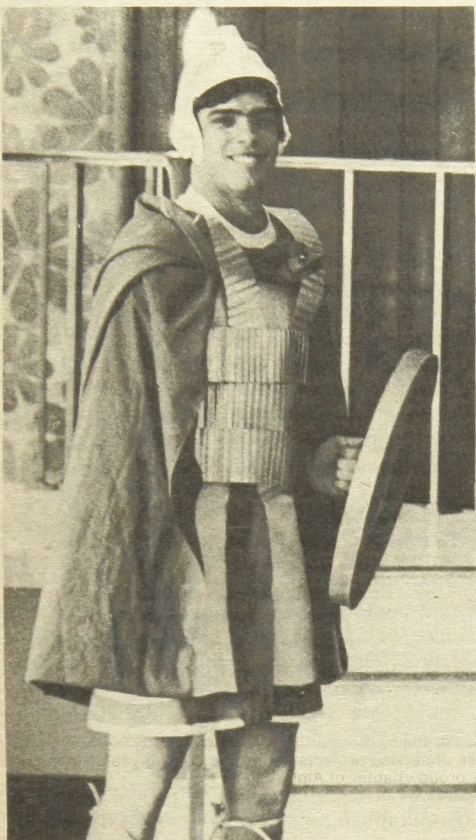
Keeping alumni informed is one activity Zeta does well. Even better now that the chapter's newsletter is published quarterly instead of yearly.

To aid the March of Dimes, the undergraduates decorated and acted in a haunted house at Halloween.

Something Traditional—The chapter rejuvenated its Mothers' and Wives' Club. Something new—a color TV set and soda machines.

At homecoming, Zeta teamed up with Alpha Tau Delta sorority to build an impressive float much admired by returning alumni.

Later, several brothers took to the road to



Alpha Sigma Phi and Phi Beta Colony is making history at Otterbein. The "Old Gal" will be the first national fraternity on the campus. Phi Beta is making its mark. Including seeing Bill Shade honored for the most original toga outfit at Otterbein's Greek Week.

Province IV

Province Chief: Gordon Beeman, Indiana '68

Assistant Province Chief: Patrick Sheehan, Westminster '77

Province President: Randy Dickens, Toledo

Theta University of Michigan

Theta's on the move! New this year was a Little Sisters program, organized by **HJP Larry Munski**. Eight men joined the Theta brotherhood and the chapter boasts a strong 3.3 grade point average.

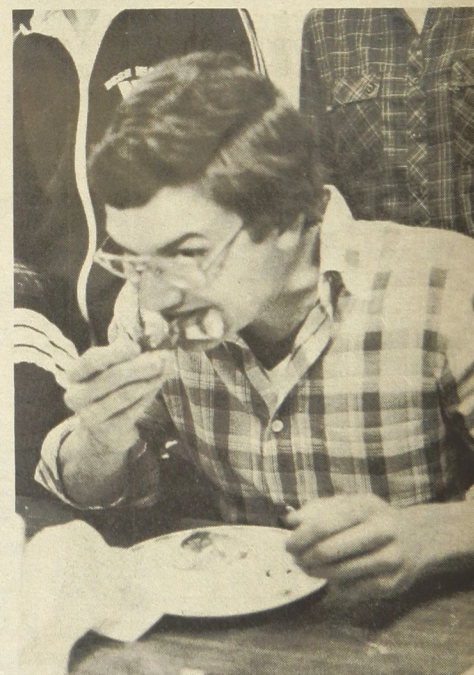
Fall brought a newly built TV room in the basement, an exchange dinner with the women of Alpha Gamma Delta, plus a third place win in intramural football.

Spring found the chapter hosting the Province Conclave with brothers from three other chapters attending.

In addition, the undergraduates celebrated at an unforgettable spring pledge formal.

Greek Week kept the men busy as will the beefed-up rush program planned for next fall.

"Our goal is to conduct the most intense rush effort ever," says **Theta's Duane Dewald**.



Why is this man pigging out on pizza? For a good cause, not because of the munchies. Paul Rozmus of Alpha Nu, Westminster, gobbles at the chapter's Eat-a-thon that raised \$1,500 for cystic fibrosis. Every Alpha Sigma Phi chapter carries out two or more community service projects each year.

Scholarship, theme parties, service projects, exciting growth

visit Theta and Beta Rho Chapters.

Four new pledges during winter quarter, and making *final* mortgage payments on the chapter house were other highlights this school year.

Alpha Mu Baldwin-Wallace College

An interest group is at work at Baldwin-Wallace. The Chapter has come under the rebuilding plan of the Fraternity's Expansion Program at the direction of The Grand Council.

Beta Sigma University of Cincinnati

The Grand Council has suspended the charter of Beta Sigma due to the Chapter's failure to meet the Fraternity's standards of operations.

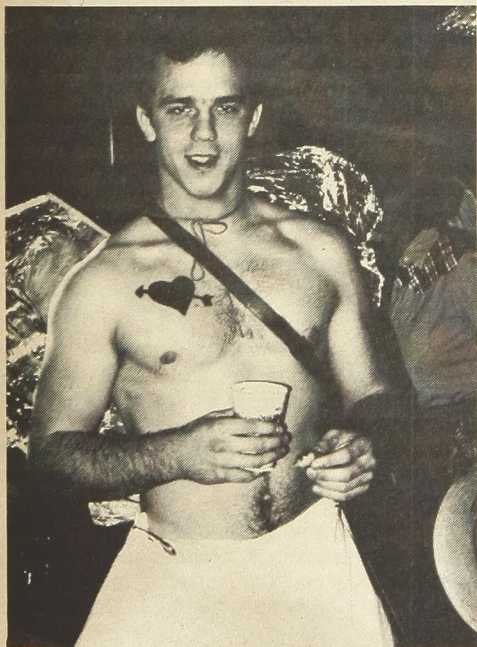
Gamma Alpha Ohio Northern University

A seven man committee scouts out service projects for Gamma Alpha. And then everyone helps out.

Twenty-one Alpha Sigs play on the varsity football squad. And a tasty pig roast drew good crowds after the Parent's Day football game. Later, alumni came "home" at homecoming to enjoy a well-cooked meal by house mother **Lucy Hubbell**.

In sports, the chapter placed second in flashball, and first in fraternity league horseshoes.

Structurally, there's new paint in the basement, kitchen, dining room and sleeping rooms.



Like many chapters, Iota at Cornell invents themes for its various social events. One recent party was entitled "Heaven & Hell." And former HSP Dirk Anderson arrived as cupid, complete with transparent wings. Iota has been stressing alumni involvement at Rockledge. And the chapter hosted brothers from other chapters at a Province Conclave weekend.



Alpha Theta chapter, University of Missouri, manned the phones for the MDA telethon and were recognized for their help on television. The chapter plans on holding a Phoenix Week of service projects during the coming year. Alpha Theta received its charter in October, 1980—a reactivation of a proud chapter of Alpha Sigma Phi.

Something new—the men have altered the chapter's pledging program to incorporate the ideals set by the national office. And it's working well.

Gamma Zeta Bowling Green University

Gamma Zeta awards alumni at homecoming—recognizing the most recently married and the one who traveled the furthest to attend, to name a few. Incidentally, over 100 alumni attended that big event this year.

Special for alums, undergraduate **Robert Thomas** prepared a slick informational handbook, detailing chapter history and vital information on the chapter and alumni association.

As a fund-raiser, the chapter sold all-greek T-shirts. In another, the men collected aluminum cans, pocketing 25¢ per pound.

Next year, they plan to paint playground equipment at a city park.

To promote scholarship, the chapter began a program, setting a minimum grade point, and providing tutors and a study table. Gamma Zeta also holds quarterly scholarship banquets, awarding with steaks, the men having high grades.

Fall included a fantastic roller skating party with Alpha Pi sorority, and numerous teas with other campus sororities.

Winter found the men enjoying Greek Week and the TKE-ROTC Water-Wars, where the Alpha Sigs brought home a second place trophy.

During Greek Week, the men captured third place overall and first in spirit

competition.

Plans for homecoming, next October 24 are underway.

Gamma Pi Findlay College

Highlighting the year was Southern Weekend during spring. Gamma Pi's main fund-raising project had the undergrads helping during the high school sectional wrestling tournament held in town.

Phi Beta Colony Otterbein College

Phi Beta Colony is destined to go far at Otterbein College!

Undergrads score well academically, and are active in the school newspaper, and on the cross country and track team. Others serve as student senators and dorm resident assistants.

The men boogied at two parties with nearby sororities—one where all tossed a Frisbee that featured the Phoenix logo.

In May, the men went to Cedar Point to spend a day at that "Amazement Park." "We're going again next year," reports the colony.

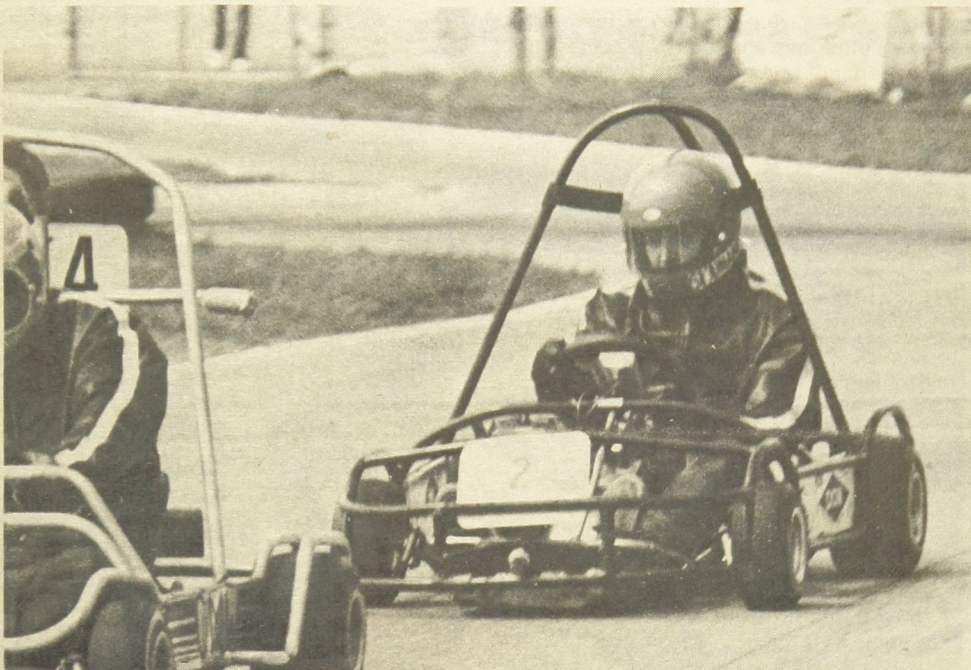
Province VI

**Province Chief: Dr. Larry Spees,
Ohio Wesleyan '57**

**Province President: John Van Horn,
Marshall**

Delta Marietta College

Like Gamma Alpha at Ohio Northern, Delta



Purdue's Bill Shumaker roars around a curve during the annual Grand Prix, cheered on by his Alpha Pi brothers. The Alpha Sig entry was favored to win over 32 others, but a crash wiped out the dream. But the important thing, the chapter reports, was the closeness that resulted from working together on the special project. Better luck next year!

has its football players—15 starters on the Marietta College squad. But it is showing the world it is a fraternity for non jocks as well.

To better alumni relations, the chapter invites alums to weekly chapter meetings.

Special thanks to all the alumni who made possible through generous donations, a new lounge—named after brother **Ed Stitt '29**.

Alpha Nu Westminster College

Alpha Sigs are leaders at Westminster College. Undergraduate **Tom Druce** is Student Association president. **Paul Rozmus**, editor of the school newspaper. **Scott Slagle**, IFC president, and **Keith Morgenstern**, IFC treasurer. Alpha Nu proudly welcomes **Rob Sheehan '71**, as the new Executive Director.

Beating four other fraternities, Alpha Nu nabbed first place in Greek Week competition. Later, the chapter sponsored a trampoline jump-a-thon and a pizza eat-a-thon that grossed \$1,500 for the Cystic Fibrosis Foundation of Western Pennsylvania.

A real sweetheart is **Linda Snyder**, Alpha Nu's entry in this year's Fraternity sweetheart competition. She took first place.

The undergrads insulated the chapter walls and pledge classes remodeled the basement floors and ceiling.

Now, the men have their sights set on maintaining their reputation as "athletes, scholars, and all-round diversified gentlemen," says Alpha Nu's **Paul Rozmus**.

Beta Gamma Bethany College

Nineteen pledges last February, a traditional Black Lantern procession on Founder's Day, and proving itself scholastically on campus

made this year great for Beta Gamma.

What's more, the men donated blood to the Red Cross, sponsored a child, and participated in a local church clothing drive.

Beta Delta Marshall University

Alpha Sigma Phi came back to Marshall on December 6, when Beta Delta received its charter. Brothers from Rio Grande College helped with the induction ceremonies.

For charity, the men answered phones during a WMUL-TV telethon to help raise money for the university's public broadcasting station.

Money—\$200.00—for the chapter house came from several successful car washes and rummage sales.

Later, the undergraduates provided transportation for College Bowl Quiz teams competing in the national finals at Marshall.

The chapter's social calendar was full with Friday night parties, rush bashes, disco parties and roller skating outings with the Little Sisters.

Intramurally, the men fought hard in softball, basketball and football.

Road trips included ones to **Gamma Mu**, **Zeta** and **Beta Rho**.

Plans for next year's homecoming, Founders' Day and Black and White are in the works.

Gamma Delta Davis & Elkins College

Two events highlighted the year at Gamma Delta. First an outstanding fall alumni weekend. And then a top-notch landscaping job by the undergraduates outside the dormitory they occupy.

Gamma Mu University of Charleston

Gamma Mu has gone to sea—that is, nine brothers are on the college crew team.

Fall found the chapter collecting turkeys for needy families at Thanksgiving and toys for hospitalized children at Christmas.

Spring brought an eventful Alumni Day/Weekend and the formal Black and White.

Delta Delta Slippery Rock State College

Most newsworthy at Delta Delta were its big pledge classes, a dance marathon and blood donations.

Delta Epsilon Rio Grande College

Delta Epsilon likes to help others. To help the community, the men hosted a Valentines Day party for children at the nearby Guiding Hands School—complete with sacks of candy and games. For the college, the pledges cleaned desks in Anniversary Hall and repainted backboards on the college's outside basketball courts.

What's more, the men helped organize and operate the Spring Carnival—the first of hopefully many more college fund-raising events at Rio Grande.

And to help themselves financially Delta Epsilon worked in the school cafeteria for one month.

A brother's mother made 30 black robes for the chapter's Black Lantern procession, the best in three years claims the chapter.

Rio Grande makes good use of non-alcoholic rush and pledging functions, and lists alumni brothers celebrating upcoming birthdays in the chapter's regularly published newsletter.

Province VII

Province Chief: Tyler Cox, Wake Forest '75

Assistant Province Chief: Wesley Nobles, NC State '78

Province President: David Bernheim, UNCC

Alpha Psi Presbyterian College

"Alumni relations are the wings of the Phoenix," says **HAE Riley Lanier**. Not surprising the chapter publishes regular newsletters and hosts a variety of events for its alumni brothers.

This year, all enjoyed a weekend Black and White and a Hawaiian Holiday barbecue and disco.

Alpha Psi's power-house B-league volleyball team took top honors and a 12-man pledge class organized a special Halloween party for a nearby orphanage.

Beta Zeta North Carolina State University

Beta Zeta was host of the productive Province VII Conclave this year. Beta Zeta's **Jim Lilley**, Province President, spearheaded that meeting of the minds, where seven of



1981 Sweetheart competition runners-up: Patricia Ryan, 1st runner-up, (left) was nominated by Gamma Xi at Widener University where she is a nursing student. With a 3.5 grade point average, she has served as a class senator and vice president of her class her senior year. Jean DeRosa, (right) 2nd runner-up, is nominee of Alpha Sigma, Wagner College. A Dean's List student and member of Who's Who, she is active with the Wagner College Choir and a children's tutoring program.

the Province's chapters attended.

Over 75 parents and alumni dined at a breakfast-lunch in February where brothers spoke about the chapter and presented a classy slide-show.

For community service Beta Zeta sponsored a rock-a-thon to benefit Multiple Sclerosis. That event ended on a note of \$1,400 for MS.

Taking part in Greek Week, and a IFC sponsored car wash for a leukemia charity also kept the men busy.

The house is in top form with new lamps, carpet, curtains and end tables, thanks to profitable Little Sister fund-raising projects.

And finally, as Beta Zeta approaches its fourth year of reactivation on campus, efforts to improve community and alumni relations are action items for the chapter.

Beta Mu Wake Forest University

An excellent showing academically earned Beta Mu the campus scholarship award this year. Beta Mu captured second place in Greek Week competition.

Thanks mostly to alum **Marvin Gentry**, the chapter now has a new patio and grill. Gentry earned the outstanding alumni award for his instrumental building and financing efforts in that project.

New party-related equipment, including a cooler and stereo were other welcome additions.

Coming up in November is Beta Mu's 50th anniversary, and a new program for alumni.

Gamma Theta Colony University of Miami

"... Alpha Sigma Phi has set an example for other fraternities..." says **Louise P. Mills**, the school's assistant dean of student personnel. Mills is referring to the colony's recent service project of planting 36 palm

trees around the Panhellenic building. The Alpha Sigs have pledged to water the trees every other day and to provide other care. That project was the colony's *fifth* service effort for the year.

Gamma Theta places high among fraternities scholastically and earns money by working concession stands at home football games.

The 17-hour drive to the Province Conclave was well worth the effort reports Miami. And now the men have their goals set for chartering next year.

Gamma Lambda Atlantic Christian College

Brothers mow neighbor's lawns as a community service project.

Gamma Phi Concord College

A standout homecoming dance, rush, intramurals, the traditional fall wine party and several get-togethers with Little Sisters keep Gamma Phi undergraduates happy this year.

Delta Zeta University of North Carolina at Charlotte

Delta Zeta brought Vegas to Charlotte during its second annual campus-wide Vegas night—complete with "craps tables," "blackjack" and much more.

Prizes donated by local merchants were auctioned off for "Alpha Sig Dollars"—Delta Zeta's answer for chips.

A visit to a day care center, a Halloween masquerade party and an unforgettable Founders' Day were other main events at Delta Zeta this year.

Delta Eta Eastern Carolina University

"It's been a banner year," reports Delta Eta chapter. "We acquired a house, nearly doubled our membership, and have been active in the community."



Alpha Sigma Phi's National Sweetheart 1981—Linda Diane Snyder, nominated by Alpha Nu, Westminster. Linda is a sociology major. She is a member of Delta Zeta sorority, Sigma Sweethearts and the Freshman House Council. She has assisted Alpha Nu with many of its charity and service projects. The fourth annual competition drew the largest field of nominees to date. Winners are chosen by votes of undergraduate chapters. Qualifications stressed are scholarship, campus involvement and "traits of character that put polish on our personalities."

A Christmastime food drive for the local Salvation Army was one such charitable project.

The chapter house was featured in a spring tour of historical homes in Greenville. And right now, it's undergoing finishing restoration work by the men.

The social scene saw a December Black and White formal dance and some rousing parties with the chapter's Little Sisters.

Delta Theta Radford University

History was made last November at Radford when Delta Theta was chartered. That came after two years of hard work by the undergraduates striving to earn chapter status. But the hard work hasn't stopped.

Since then, Delta Theta placed fourth in intramural basketball and first in IFC bowling.

The chapter also sponsored the college's Valentines Day dance using monies earned through a series of fund-raisers.

Service projects included cleaning a campus chapel, working at a charity dance-a-thon and sponsoring a community paper drive.

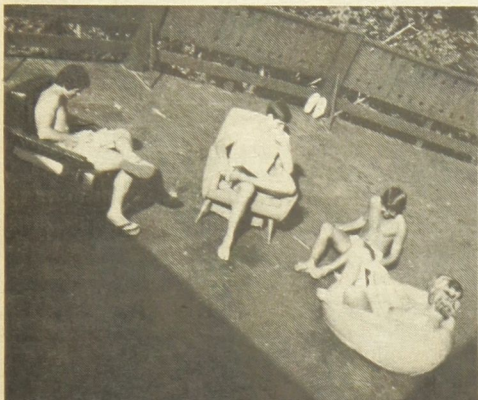
Even an education fund was started to award the chapter's scholars.

Last March, the group took to the cool mountains of Virginia for a retreat, organized by advisor **Dr. Robert Gill**. (Dr. Gill is a member of Delta Upsilon.) There, next year's plans were set. Those include improving rush



Intramurals are an important part of most chapter programs. Psi at Oregon State runs a very active intramural schedule and brothers always gather to cheer on their teams. Especially when it's "Hammerin' Hoss" Courtright at the bat. Live near a chapter? Plan on attending Alpha Sig intramurals.

Chapter Reports



When it's warm at Cornell (and the Iota brothers say that isn't often), members often gather for studying on the porch at Rockledge, overlooking the gorge. Informal and formal study tables and tutorial sessions are part of the scholarship programs at more and more chapters.

and alumni relations programs, acquiring a house and increasing brotherhood-building activities.

The newly-born chapter's first graduate and alumni brother is **Hugh Hornsby**, who earned that status this year.

Delta Iota Longwood College

Like Delta Theta, Radford University, Delta Iota received its charter last November. And also like Radford, the chapter's been busy ever since.

Delta Iota boasts five new pledges and nine great Little Sisters.

In May, it held its first awards ceremonies, honoring brothers for scholastic and fraternal achievements.

Several men participated in William Shakespeare's "A Comedy of Errors," a production of the Longwood Players.

And when **Vincent Price, Alpha '30**, came to town, a proud Delta Iota initiated a two minute standing ovation.

Intramurally, the chapter supported teams in softball and tennis.

Now, there are plans to hold a Black and White dance with Delta Theta.

Phi Alpha Colony Francis Marion College

No news was reported from this new member of Province VII.

Province VIII

Province Chief: Bruce Burns, Ohio State '63

Province President: Glenn Ritschel, Rutgers

Omicron University of Pennsylvania

The Grand Council has directed that Omicron come under the Rebuilding Plan of the Expansion Program. Work has begun among the chapter's alumni.

Alpha Rho Colony New Jersey Institute of Technology

After 28 years of absence, Alpha Sigma Phi is back at NJIT, (formerly Newark College of Engineering). That came true when Alpha

Rho became a colony in January.

The group of 26 men have been playing intramural sports, attending the Province VIII Conclave, and locating a chapter house on High St. in Newark. The men are now gathering tools, furniture and funds needed for restoring the house.

Some funds were raised during cake sales and car washes. Now, plans call for a fund-raising bike rally and barbecue.

Undergraduate **Scott Dunne** serves as general manager at the college radio station and **Neale Bedrock** was recently elected financial vice president of the NJIT Student Senate.

Alpha Sigma Wagner College

When Alpha Sigma sings, it wins—that's two trophies in this year's annual campus Songfest. The chapter even beat the music fraternity.

Then at Christmas the undergraduates took their singing talents to a nearby nursing home. Alumnus **Willy Ortiz** donated a cake for that tuneful event.

As another service project, Alpha Sigma danced in a two-day dance-a-thon for the Muscular Dystrophy Association.

Back on the homestead—the men knocked out a wall and joined the study and lounge, making for an improved lounge, where pledges added the finishing touches.

Pledges also helped the undergraduates construct a homecoming float. Giving the orders was float chairman **Jerry Champe**.

Spring brought a visit to and from **Zeta**, Ohio State University, the Semi-formal and attendance at the Province Conclave at Lehigh University.

The Little Sisters program got a boost with five new ladies and in sports, the chapter fielded teams in basketball and softball.

Alpha Tau Stevens Institute of Technology

Ringin' in the new and bringing back the past has kept Alpha Tau hopping. New is a Little Sisters program—now 15-ladies strong. Rejuvenated is the public relations committee, headed by undergrads **Dave Jendzeizky** and **Bob Weinschenk**.

Alpha Tau held an open house for the entire neighborhood. "All the neighborhood learned that we were not an 'animal house'," reports HSP **Jim Mark**.

Earlier, the men shoveled snow along the street block and offered neighbor's rides to the polls on national election day.

Academically, the chapter can't be beat. The IFC awarded the men with a plaque for finishing first scholastically among all fraternities. The chapter is strong in athletics, too!

Thanks to a month of "storming the dorms," during rush, the chapter now has 13 new brothers.

And all 43 Alpha Tau men are in some sport, organization or club on campus.

In the living room there are new couches. And on the front door—a new stained glass

window displaying the letters of Alpha Sigma Phi.

Beta Epsilon Lehigh University

Beta Epsilon went shopping this year. Consequently, there's new family room furniture, freezer, stereo, speakers, library chairs, carpet, dishwasher and refrigerator.

The kitchen items came in handy when brothers frequently invited faculty members over for dinner and conversation. Those educational get-togethers helped, because Beta Epsilon is ranked well scholastically among the 32 fraternities on campus.

Intramurally, it's in the top 10.

The chapter hosted the Province Conclave where over 80 Alpha Sigs rapped, played softball and partied.

Earlier, the chapter threw a party for 40 area children and treated the group to a Lehigh football game and lunch.

Briefly, the year included ski trips at Christmas, Parent's Weekend in October, Greek Week, Alumni Weekend and 14 pledges.

Beta Theta Rutgers University

Beta Theta celebrated its 50th birthday this year and what a year it was!

First, a Halloween party. Next a Christmas bash—complete with Santa played by HSP **Albert Wakai**. Then, new paint in the second floor bathroom with plans for more home improvements. And finally, scoring well in football, soccer, swimming and basketball.

Thanks to all the alumni who donated money for the chapter's newsletter, "Triangle."

Beta Chi American University

Alumni-undergraduate relations are improving! Many recent alumni graduates are taking active roles in the alumni corporation.

Gamma Xi Widener College

Gamma Xi is all eyes! In a Town Watch Program, several Gamma Xi men assist campus security in patrolling university grounds. Other brothers play on the varsity football team.

And all the men tackled the many needed repairs in their new Victorian-style house—painting, carpeting, and tiling.

All 58 brothers cheered for little sister **Erlane Campos** when she was crowned Homecoming Queen. The previous winner was also a Gamma Xi little sister.

Province IX

Province Chief: William Klaban, Penn State '50

Province President: Wesley Horbatuck, RPI

Iota Cornell University

Initiating 21 men into the chapter is the news at Iota. That big addition results from great rush programs. Now the chapter has 50

Bruce L. Cohen, Cornell senior, has been elected president of that university's Interfraternity Council. With 49 fraternities represented, the Cornell IFC is the nation's second largest such organization. A Dean's List student, Cohen served Iota chapter as vice president, managing its \$200,000 annual budget. Cohen interned this summer in labor relations with Atlantic Richfield. He has already begun a column in Cornell's newspaper to communicate about the IFC's work.



Chapters report that they're gentlemen, scholars and good citizens who have fun

dedicated undergraduates.

Newsletters go out regularly to alumni brothers and pledges are required to write to at least one alumn during pledgship.

"Major home improvements have put the chapter house in the best shape in three years," says Iota's **Harlow Russell**.

The year brought fifteen new Little Sisters and plans for an even better Little Sisters program next year. Several theme parties—Western, Heaven and Hell—with campus sororities were other highlights.

Old scrapbooks were revived—with letters sent to alumni asking for old pictures they may want to contribute. A new scrapbook for the 80's was started.

Brothers took to the road to visit Pennsylvania State University and in the spring flocked to Florida to bask in the sun.

Undergrads and alums devoured a terrific meal prepared by cook **Rita Lamphert** at homecoming. And one brother and one little sister each received the General Motors Scholarship (all tuition paid), for ranking tops in their engineering classes.

HJP Bruce Cohen is IFC president and **Walter Hlawitschka** was recently elected to Cornell's Board of Trustees as a student trustee.

Plans for next year include a weekend retreat for the chapter's officers, better contact with alumni—with a personal touch, and some major charity events.

By the way, energy-conscious Iota fines brothers who waste electricity.

Upsilon Pennsylvania State University

"This year brought a turning point in our rush program," reports **HAE Tom Erickson**. The chapter has devised better rush tactics and has improved rush social functions by emphasizing brother involvement.

Meanwhile, it's been a year of rebuilding for the Alpha Sigs at Penn State. Fall's pledge class repainted the inside of the house. Winter's pledges constructed a new partyroom bar. And spring's landscaped outside.

At homecoming, the men joined Kappa Alpha Theta to build a float and then welcomed back many returning alumni.

Alums have made generous donations that have helped make the necessary home repairs needed to comply with new fire regulations.

Beta Xi Hartwick College

Beta Xi men are scholars, athletes and all-around good guys. Scholars—the group earned the all-campus scholarship awards. Athletes—the men captured the all-campus intramurals award. And good guys—the undergraduates participated in a service-a-thon for a local charity and entertained 30

youngsters from the local Boy's Club at a pool party.

Twenty-seven brothers were honored with steak dinners at the annual senior dinner.

Mike DeMuth was named Beta Xi senior of the year.

Parent's Weekend, a Halloween bash, several bowling nights and roller skating parties packed the social calendar.

Beta Psi Rensselaer Polytechnic Institute of Technology

This year the chapter maintained its high standard of operation that helped it win the award at last summer's National Convention for the most improved chapter.

For example, undergrads completely repainted the main house, installed a new heating system, finished respectfully in intramurals and academics, initiated ten new men and hosted its annual alumni banquet with over 50 alums attending.

Each year, Beta Psi's annex is pitted against the main house in a fast-paced hockey match. Later, alums and undergrads battle it out. The win of 10-7 went to the undergraduates this year.

The Beta Psi men also proved themselves jocks in football, soccer, basketball, gym hockey and racquetball.

Eight new Little Sisters helped the brothers celebrate at several theme parties, including a T-shirt bash, where one brother wore 39 t-shirts at once.

Gamma Rho Lycoming University

Not a very good way to end this yearly wrap-up section, but Gamma Rho didn't volunteer any news.

Alpha Sig editor is named president of national group

For the first time in almost two decades, an Alpha Sig is heading a national interfraternal organization.

Evin C. Varner, Presbyterian '58, was elected president of the College Fraternity Editors Association (CFEA) at its annual meeting in June in Philadelphia. There are 76 fraternities, sororities and professional fraternities and sororities that belong to CFEA, making it the largest interfraternal organization in the country.

Through CFEA Greek editors and executives share information, produce workshops and recognize outstanding achievements in fraternal journalism.

Varner, editor of *The Tomahawk*, will preside at the 1982 annual meeting of CFEA in Indianapolis. He has served CFEA as an officer and has conducted workshops for various groups of Greek editors.

Serving with Varner will be Michael A. Moxley, Tau Kappa Epsilon, vice president; Robert E. Lyon, Kappa Alpha, secretary; and William C. Miller, Alpha Gamma Rho, treasurer. Board members include Eileen B. Rudolph, Delta Delta Delta and Dr. Charles H. Lippy, Alpha Chi Rho.

Ralph F. Burns, Executive Secretary Emeritus of Alpha Sigma Phi, was CFEA president in 1962. He headed the Fraternity Executives Association in 1952. The late **Lloyd S. Cochran**, a past Grand Senior President of Alpha Sigma Phi, was chairman of the National Interfraternity Conference in 1954.

Bay Area Council supports colony

Nu colony at the University of California-Berkeley has strong support from the **Bay Area Alumni Council**. The group has provided a sizeable donation toward the furnishing of the colony's new home and provided an additional donation to underwrite cost of a delegate to the National Educational Conference.

Bill Needham, California '26, has given the colony an electric floor polisher. "**Hank**" **Dietz**, California '25, has given the group a sword for use in its rituals. Other members of the Council are raising funds and checking attics for furnishings, according to **John F. Doane**, California '36, Council president.

California Association makes grants
The **California Alpha Sigma Phi Association** has awarded scholarships to ten students at the University of California-Berkeley.

Milton W. Morrison, California '37, has been elected president of the Association. He was previously a director. **Maitland B. McKenzie**, California '22, has served as president for many years.

Southern California alumni meet

Two **Nu colony** members were special guests at a June 24 meeting of the new **Los Angeles Alumni Council** along with the **Alpha Zeta Corporation**. **Bret Lawson** and **Tom Toller** shared with the group the progress of the University of California-Berkeley re-activation effort.

The meeting celebrated the 55th anniversary of the chartering of Alpha Zeta chapter at UCLA. **Phil Johnson**, UCLA '30, announced that the 1981 Alpha Sigma Phi Alumni Scholarship will go to Paul Conley of Stockton, CA. This is the second year the Alpha Zeta Corporation has made a grant to an entering freshman at UCLA.

Those attending the dinner meeting included **Don Durward**, UCLA '61; **Ed Snell**, UCLA '62; **Jim Cordi**, UCLA '64; **Larry Gallup**, UCLA '42; **Thomas Mew**, California '50; **Ron Nelson**, UCLA '53; **Pat Donegan**, UCLA '54; **Lloyd Campbell**, UCLA '56; **Lee Pierce**, UCLA '46; **Mark Reed**, UCLA '66; and **Bob Kutz**, California '67.

Kutz has been instrumental in reviving the Los Angeles Alumni Council. Those alumni interested in the group's newsletter and activities should write to Bob Kutz, P.O. Box 10326, Bakersfield, CA 93389.

"Before I pledged Alpha Sigma Phi, I had little sense of direction, little long term planning. However, my association with quality men has helped me direct my life. There is an atmosphere of success and it rubs off on all of us. I believe the members of this Fraternity will be the leaders of their communities. If true, I feel nothing but optimism for the future of this nation."—**Scott Starling, Purdue**

Loyalty Fund lists '80-81 contributors; sets sights on 13% increase for 1981-82

Think of this and the next four pages of The Tomahawk as a giant "Thank you" note. It goes to the brothers of Alpha Sigma Phi whose gifts to the 1980-81 Loyalty Fund drive made it possible to operate Alpha Sigma Phi.

Alumni gifts are critical. Gifts represented nearly 20% of the Fraternity's operating budget this past year. Those gifts made it possible for the Fraternity to start new chapters, revive dormant chapters, publish *The Tomahawk* and continue to maintain quality undergraduate chapters across America.

Loyalty Fund income this past year represented \$46,673.

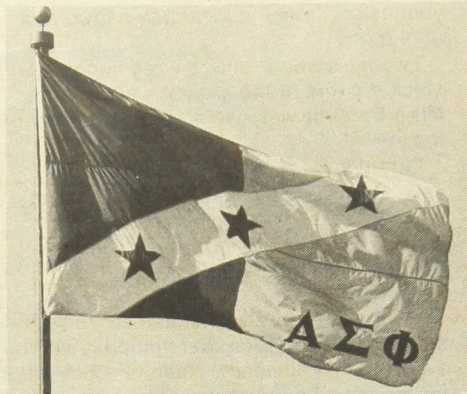
The goal for the coming year is \$53,500, an increase of 13%. (Key alumni, recognizing that Alpha Sigma Phi's alumni giving has lagged behind that of other national fraternities, have urged the Fraternity to seek additional support.)

A coupon on this page can be used to send with your gift. Let your check get the '81-'82 campaign going to a new record. You can designate your gift for the Loyalty Fund or for the Memorial Fund or the Ralph F. Burns Foundation. Gifts to the Memorial Fund are tax exempt.

An increasing number of brothers are buying insurance policies and designating Alpha Sigma Phi as beneficiary. Bequests and other gifts of stock or real estate can be made. For further information about those programs, contact the Fraternity's Headquarters.

The Loyalty Fund recognizes brothers at several giving levels.

The Founders are those who have given a one time or cumulative gift of \$1000 or more.



The cardinal and stone flag of Alpha Sigma Phi is flying higher and in more places, thanks to the loyal support of alumni who contribute each year to the Loyalty Fund drive. Send your check for the 81-82 campaign today. (Kent Porter photo).

Anniversary Club members are recognized for an annual contribution to the Loyalty Fund of \$135 or more—a dollar a year for each year of the Fraternity's age. (Make that \$136 for next year!)

Phoenix Club members are those who gave \$50-\$135. The Honor Roll salutes those who contribute up to \$50. (Brothers are asked to inform Headquarters of any errors or omissions in any of the listings.)

Inflation has hit Alpha Sigma Phi as it has all individuals and businesses. But the "Old Gal" continues to squeeze every dollar, getting two dollars of value as it seeks to take advantage of opportunities to grow that seem to appear every month. And as it seeks to develop stronger programs to teach and perpetuate the ideals of Alpha Sigma Phi. Thanks to loyal alumni like you, the Phoenix will soar even higher in the year ahead.

FOUNDERS CLUB MEMBERS

Anderson, S. W. Eastern Michigan '73	Hanna, W. Minnesota '18
Best, E. J. California '13	Hilstrom, H. R. Iowa State '31
Black, L. Illinois '27	Kegel, W. C. Westminster '48
Cleworth, C. W. Illinois '14	McGoey, R. A. California '23
Coffey, R. California '17	Mosiman, F. W. Stanford '17
Corbett, B. Wagner '56	Mueller, H. C. Illinois Tech '39
Cupp, P. J. Pennsylvania '21	Richardson, G. S. Colorado '17
Fisher, L. Cornell '15	Trubow, G. B. Michigan '53
Franks, M. E. Illinois '34	Wadsworth, T. P. California '17
Glos, R. E. Illinois '22	

ANNIVERSARY CLUB MEMBERS

Aw, F. T. Stanford '61/01	Lubbers, A. W. Lehigh '31/02
Best, E. J., Dr. California '13/05	Lundgren, J. C., Dr. Colorado '30/06
Blasi, M. G. Rutgers '65/05	Mavis, D. E. Michigan State '56/01
Brown, J. A. Detroit Inst-Tech '66/06	Middlekauff, R. E. Oregon State '61/03
Bunch, R. G. Marshall '33/06	Miles, J. R. Oklahoma '64/04
Burns, K. C. Cornell '76/02	Mosiman, F. W. Stanford '17/07
Cheverie, C. L. Tufts '58/01	Noble, B. Nebraska '26/02
Collin, W. E. Columbia '21/03	Reber, W. S. Findlay '68/03
Commons, J. P. Colorado '18/01	Romig, G. C. Penn State '23/05
Conrey, T. M. Oklahoma '36/05	Roschman, J. A. Illinois '51/03
Corbett, B. C. Wagner '58/01	Sandercox, R. A. Bethany '51/06
Distelhorst, C. F. Iowa '25/04	Sanders, R. S. Missouri Valley '62/01
Dumont, W. P. Ohio State '16/03	Strand, W. R. Ohio Wesleyan '48/01
Dunsford, F. J. Missouri '50/03	Thurston, S. G. Iowa State '66/06
Engelhardt, C. Cornell '39/06	Turner, F. W. Ohio Wesleyan '20/07
Fontana, R. D., Jr. California '27/07	Varner, E. C. Presbyterian '58/09
Gibbs, R. R. Oklahoma '51/06	Wadsworth, T. P. California '17/07
Hilstrom, H. R. Iowa State '31/06	Walker, R. D. Oklahoma '50/03
Kelsey, R. J. Illinois '35/06	Webber, C. E. Michigan '61/06
Kerney, R. W. Illinois Tech '40/02	Williams, E. S. California '24/06
Kutz, R. W. California '67/08	Wulff, K. A. California at Los Angeles '35/05
Lieuallen, R. O. Oregon State '58/06	Wyckoff, J. W. V. Marietta '16/06
Longworth, R. S. Ohio Wesleyan '36/02	



Alpha Sigma Phi Fraternity
24 West William Street
Delaware, Ohio 43015

Yes! I want to help kick off the 1981-82 Loyalty Fund. Here is my gift to help make the "Old Gal" stronger, to help make her grow!

- | | |
|----------------------------|----------|
| () Anniversary Club-\$136 | () \$50 |
| () \$100 | () \$20 |
| () Other: _____ | |

Name _____ Chapter _____

Address _____

City _____ State _____ Zip _____

- () I'm enclosing some news about me and a photo for The Tomahawk.
- () I'd like to become involved as a volunteer. I understand it will take only a few hours a month. Tell me more.
- () I'd like information on the Alpha Sigma Phi group hospital insurance plan.

"We invite, or more strongly, we challenge you to visit us and see for yourself the strength, pride and fellowship that exist within our chapter. I promise not only will you be impressed—you will even have a good time!"—**Brad Eican, HSP**, writing to the 1,200 members of Upsilon chapter.

Phoenix Club members give so "Old Gal" ideals may spread

Find your name here and that means you're a member of The Phoenix Club—a special group of brothers who are helping the Phoenix fly to new heights. Donors listed here supported Alpha Sigma Phi with gifts from \$50 up to \$135 during the past year.

Chapter affiliations are given after each name along with initiation year. The number following that indicates the number of times the brother has supported the Fraternity since cumulative record-keeping began in 1970-71. (If there are errors of any kind, please advise Headquarters.)

Phoenix gifts are important to the operations of Alpha Sigma Phi. A \$50 gift will heat the Fraternity Headquarters building for a month. A \$100 gift makes possible a one-day rush seminar conducted by a professional for a chapter. Or underwrites the typing, printing and mailing of a chapter newsletter to alumni.

Challenge brothers you know to become members of The Phoenix Club during the coming year and know the satisfaction of passing on the ideals of the Fraternity to more young men.

Ahern, J. W. Illinois '51/01
 Arndt, R. F. Davis & Elkins '61/03
 Aycock, M. L., Jr. Atlantic Christian '68/01
 Baetz, G. G. Cincinnati '37/06
 Bailey, M. C. Ohio Wesleyan '37/02
 Beeghly, C. M. Ohio Wesleyan '27/07
 Bell, J. H. Pennsylvania '47/05
 Bergman, R. S. Illinois Tech '53/06
 Brandfass, E. A. Ohio Wesleyan '28/06
 Braun, R. D. Toledo '58/03
 Bredar, J. A. Illinois '50/03
 Bright, W. J. Penn State '33/05
 Brown, P. N. Penn State '47/02
 Bruce, J. S. Penn State '53/05
 Buell, C. W. Tri-State '37/02
 Bunzel, C. F. Jr., Rev. Pennsylvania '54/03
 Burrell, A. A. Michigan '13/06
 Burrows, K. G. Washington '46/07
 Burton, W. D., Jr. Tulane '67/05
 Cabello, R. G. Eastern Michigan '70/05
 Campbell, L. R., Jr. Pennsylvania '47/06
 Carlson, H. E. R. R P I '50/01
 Carpenter, H. Colorado '27/06
 Carson, J. E. Westminster '48/02
 Chapman, M. A. Michigan '33/06
 Chase, E. D. Illinois Tech '58/05
 Chegash, S. M. Lawrence Tech '76/02
 Christy, R. N. Marietta '38/06
 Cleworth, C. W. Illinois '14/05
 Coccia, M. A. Illinois Tech '42/03
 Conlon, T. L. Michigan '25/05
 Cornell, T. B. Michigan State '56/05
 Cupp, P. J. Pennsylvania '21/04
 Curry, T. G. Missouri Valley '60/02
 Day, A. Columbia '20/04
 Dempsey, P. J. Lehigh '52/05
 Diaz, R. Illinois '42/01
 Dise, J. H. Detroit Inst Tech '66/04

Dixon, F. E., Jr. Widener '73/03
 Doliber, R. E. Illinois Tech '75/01
 Dukarski, M. J. Michigan '73/04
 Dunn, H. A., Jr. Oregon State '42/05
 Elles, C. J. Baldwin-Wallace '68/02
 Erikson, G. Illinois Tech '58/07
 Felten, J. C. Illinois '51/03
 Fencil, Leon R. Penn State '30/04
 Foute, H. K. Illinois '38/06
 Gallagher, E. S. Lehigh '34/05
 Gallagher, R. E. Minnesota '21/02
 Gayda, J. N. Tri-State '54/02
 Gerlach, J. G. Ohio State '43/05
 Green, M. J. Concord '70/04
 Grosch, J. A. Penn State '58/01
 Grossman, R. A. Ohio State '67/05
 Groth, A. H. Iowa State '20/01
 Gwinn, R. P. Chicago '26/02
 Hamburger, E. A. Brooklyn Poly Inst '45/01
 Hancock, R. F. Penn State '29/06
 Harrison, J. M. Iowa '31/06
 Hart, G. R., Dr. Westminster '43/04
 Harvey, J. A. Purdue '74/02
 Haseltine, C. California '27/06
 Heckman, L. Iowa State '24/06
 Hendricks, R. C., Dr. Illinois '56/04
 Hepler, J. K., Dr. Purdue '55/01
 Herchenroether, D. D. Westminster '77/01
 Hiberly, W. C. Washington '18/03
 Holland, W. F., Jr., Dr. Penn State '28/01
 Howsam, R. L. Colorado '38/06
 Ingram, D. L. Stanford '51/06
 Jones, G. W. California '35/04
 Jones, J. E. California at Los Angeles '69/01
 Jones, J. A. Penn State '56/03
 Kegel, W. C. Westminster '48/04
 Kincaid, C. W., Jr. Morris-Harvey '60/01
 Knutson, E. H. Iowa '37/01
 Koenig, A. S., Jr., Dr. Columbia '32/05

Krahmer, B. A. Iowa State '58/01
 Lane, G. R. Oklahoma '50/01
 Larsen, D. H. Baldwin-Wallace '53/05
 Lawler, W. Brooklyn Poly Inst '33/05
 Leindecker, J. P. Michigan State '58/04
 Leland, Wayne H. Illinois Tech '63/07
 Lewis, A. S. Stevens Tech '69/03
 Leyda, G. R. Mount Union '29/01
 Lindgren, O. W., Jr. Pennsylvania '36/01
 Lynch, L. G., Jr. Penn State '55/04
 Magoffin, B. Kentucky '38/25
 Maher, D. R. Toledo '53/03
 Martin, C. G. Yale '14/06
 Martin, D. L. Stanford '47/05
 Mason, W. G. Michigan '17/04
 Matsuda, G. P. Illinois Tech '72/05
 McCormick, J. T. Tri-State '35/04
 McCullough, C. W. Illinois Tech '41/06
 McDermid, D. C. Washington '24/06
 McGoe, R. A. California '23/04
 McGurn, W. E. Wisconsin '28/06
 McKenzie, M. B. California '22/02
 Mielach, B. F. Rutgers '51/01
 Mills, A. A., Jr. Ohio Wesleyan '37/06
 Monnett, R. L. California '51/07
 Mooers, D. California '49/06
 Morris, R. H. Michigan '57/01
 Mueller, H. C. Illinois Tech '39/06
 Nakamura, R. M. Pennsylvania '58/04
 Nolin, A. R. Cornell '20/10
 Olinghouse, J. E. Oklahoma '64/04
 Park, R. W. Michigan '54/04
 Patrick, G. W. Marietta '60/05
 Patton, L. G. Washington '48/02
 Pearson, R. G. Purdue '67/04
 Pokorny, G. R. Bowling Green '50/04
 Porea, R. C. Widener '68/01
 Potts, Warren D. Ohio State '68/06
 Ransom, R. A. Carnegie-Mellon '25/05

Rappolt, J. F. R P I '56/06
 Resch, W. H. Syracuse '35/06
 Ritchie, B. T. Pennsylvania '60/04

Roehm, R. D. Ohio State '17/05
 Rose, R. R. Oregon State '61/04
 Rush, W. J. California at Los Angeles '49/03
 Sandwen, A. H. Bethany '48/01
 Scarminach, C. A. Buffalo '63/03
 Schmid, M. G. Nebraska '20/04
 Schmidt, T. F. Stanford '32/07
 Schultz, N., Jr. Stanford '35/06
 Selig, J. A. Illinois '31/06
 Shenefield, J. W. Michigan '23/03
 Showerman, J. B. Northern Michigan '69/04

Sisson, H. M. Wisconsin '24/06
 Sonder, O. L., Jr. American '47/03
 Southard, J. K., Jr. Massachusetts '60/04
 Standish, L. J., Jr. Pennsylvania '32/05
 Stuart, D. K. Illinois Tech '64/05
 Sturgis, C. R. California at Los Angeles '43/03
 Tanney, R. R. Penn State '71/01
 Taylor, I. B., Jr. Ohio State '42/05
 Thurston, S. G. Iowa State '66/07
 Trubow, G. B. Michigan '53/04
 Verre, J. L. Illinois Tech '47/03

Von Dreesche, C. F., Jr. Lehigh '49/04
 Waara, F. M. Purdue '56/01
 Wajnert, T. C. Illinois Tech '61/04
 Warrender, W. F., Md. Penn State '53/05
 Watkins, R. A. California '30/06
 Winchell, R. L. Connecticut '51/01
 Winquist, C. J. Michigan State '56/06
 Witzel, E. M. California '37/05
 Wong, C. California at Los Angeles '66/05
 Zamparelli, J. F. Tufts '47/04
 Zielinski, R. P. Illinois Tech '68/02

Honor Roll salutes contributors who help keep Alpha Sigma Phi at the top

Meet the brothers of the Honor Roll. All men on this list contributed up to \$50 to the progress of Alpha Sigma Phi. Contributors are listed alphabetically under each chapter name. Chapters as listed alphabetically by college or university name.

The first two numbers following each name indicate year of initiation. The number following the slash mark indicates the number of years that brothers has supported Alpha Sigma Phi's Loyalty Fund. The Fraternity's computer has stored that information since 1970-71. (If there are errors of any kind, please advise Fraternity Headquarters.)

Check your chapter listing and see how many brothers are honored here. And encourage your brothers to start work now in making your chapter's list longer when the next Honor Roll appears! This support is vital to the development of the "Old Gal."

ALABAMA
 Arnold, R. J. '49/03
 Carson, W. G. '43/03
 Copeland, D. A., Dr. '62/04
 Cronin, D. J. '48/06
 Day, E. W. '41/01
 Eich Jr., W. F. '30/03
 Garland, M. V. '66/06
 Graham III, R. H. '60/06
 Hoffmann, C. L. '35/01
 Koch, R. S., Dr. '34/05
 McBride, F. G., Col. '35/03
 Vergos, G. M. '50/01

AMERICAN
 Barkdull, W. L. '40/06
 Buck, T. R. '48/04
 Buck, T. R. '48/01
 Bullard, D. K. '61/03
 Cauffiel, B. B. '74/02
 Conroe, D. E. '76/01
 Dunne, D. J. '73/01
 Green, D. C. '66/04
 Hecox, J. S. '57/03
 Hoak, B. C. '46/01
 Jeffrey II, J. '51/06
 Kashishian, S. G. '76/03
 Marino, F. T. '40/04
 Spain, F. L. '59/01
 Vallieres, A. I. '41/06

ARIZONA
 Austin, E. P. '55/04
 Steinwachs, D. M. '67/04
 Stewart, W. D. '62/06

BALDWIN-WALLACE
 Acton, B. A. '69/04
 Atack, F. C. '44/01
 Baumler, J. R. '66/01

Chapman, J. H. '48/06
 Dick, R. '47/04
 Fatica, M. F. '39/06
 Geiss, M. C. '46/05
 Gogol Jr., E. P. '74/01
 Goss, G. G. '52/06
 Govich, B. M. '49/05
 Grunden Jr., J. P. '64/02
 Hunter Jr., G. A. '56/01
 Kanary, R. A. '70/01
 Kegel, W. R. '74/03
 Leach, J. K., Dr. '41/06
 McLaughlin, J. A. '56/04
 Miller, J. H. '41/02
 Moran, J. J. '72/01
 Mountz, W. '43/06
 Nemeth Jr., J. K. '47/06
 Owens, W. F. '61/06
 Owings, T. E. '66/01
 Reid, C. J. '66/01
 Reynolds, D. L. '51/03
 Schalois, M. J. '51/02
 Schnaterbeck, R. A. '53/04
 Shirkey, W. L. '46/06
 Sturges, R. S. '71/02
 Swanson, A. V. '52/01
 Wendt, V. E., Dr. '49/02
 Wise, A. B. '43/03

BETHANY
 Bartholomew II, T. '61/05
 Bonville, W. J. '47/06
 Ferguson, G. J. '31/01
 Herrington, R. T. '54/01
 Horner, W. H., Dr. '29/05
 Kuti, A. J. '35/06
 Maloy, T. D. '61/05
 McGill, E. C. '50/05
 Saxman, B. E. '33/06
 Sipe, H. C. '34/04
 Smith, L. J. '68/01
 Urbach, E. J. '73/03
 Zaphry, P. A. '47/01

BOWLING GREEN
 Bishop, D. B. '77/01
 Blakemore, L. M. '52/07

Cameron, W. A. '50/02
 Conrad, C. '66/05
 Dedrick, T. R. '67/06
 Deutsch, R. E. '65/05
 Group, G. G. '77/01
 McFerren, S. J. '72/04
 Moyer, J. W. '70/01
 Orr, R. D. '69/05
 Ryder, G. J. '50/04
 Stewart, J. M. '67/01
 Weber, D. C. '50/02
 Wischow, H. C. '50/01

BROOKLYN POLY INST
 Alexion, J. C. '38/07
 Crager, W. C. '26/05
 Kaupp, W. O. '35/06
 Korwan, A. C. '30/01
 Lindemann MD, R. '38/01
 Scaran, R. M. '46/01
 Wandmacher, C. '45/01
 Weaver, S. A. '32/03

BUFFALO
 Anderson, T. M. '62/05
 Bamberg, C. A. '55/03
 Baube Jr., F. L. '50/01
 Botula, C., Maj. '65/05
 Bunge, K. E., Capt. '66/05
 Falcone, J. D. '66/01
 Harrigan Jr., C. M., Dr. '51/01
 Harris, G. W., Dr. '51/01
 Hierl, A. E. '61/06
 Kriz, S. R. '66/03
 McCurdy Jr., R. C. '53/02
 Nielsen, J. N. '62/03
 O'Neill, P. D. '54/01
 Pepe, P. A. '56/06
 Pfeffer, T. L. '61/03
 Terlecky, P. M., Dr. '62/04
 Thiel, B. W. '66/05

CALIFORNIA
 Arthur, R. J., Dr. '43/06
 Bell, D. V., Cmdr '42/05

Blackford Jr., R. '34/01
 Bree, J. H. '24/05
 Breed Jr., A. H. '23/04
 Brown, E. H. '54/01
 Bryant, T. T. '30/03
 Carrick, R. P. '54/05
 Deal, D. E. '52/01
 Doane, J. F. '36/06
 Drew, J. E. '16/03
 Follis, R. G. '19/01
 Fulmor, J. N. '13/04
 Gentile, C. B. '42/07
 Harding, G. L. '40/06
 Higgins, N. S. '48/04
 Higgins, W. D. '23/03
 Jensen, R. V. '52/05
 Lutz, R. D. '47/05
 Martina, P. M. '40/01
 McCarthy, J. B. '57/02
 McCarty, F. '28/07
 McComas, E. W., Ltcol '14/01
 McGrew, J. M. '40/01
 Miller, T. K. '35/06
 Montgomery, W. L. '24/04
 Needham, W. S. '42/06
 Nichols, M. A. '64/04
 Perkins, D. C. '64/04
 Pierson, D. B. '24/05
 Ragan, E. M. '37/06
 Reidy, K. J. '58/07
 Reinhardt, J. C. '19/05
 Richardson, J. A., Mj. Gen. '29/03
 Riemke, R. A. '63/05
 Rogers, S. H. '63/02
 Ross, E. '18/06
 Scales, H. H. '39/01
 Schick, J. C. '42/04
 Stanaro, C. J. '47/05
 Walker, P. J., Dr. '14/06
 Walker, S. R. '65/03
 Watson, D. '27/05
 Wertsch, R. A. '37/06
 White, A. E. '18/07
 White, M. K. '56/03
 Wilber, H. M. '22/04
 Witzel, C. R. '32/06
 Witzel, F. D., Capt. '28/06
 Young, R. H. '15/06
 Zanzot, H. C. '31/05

Loyalty Fund



F. Eugene Dixon Jr., Widener '73, Philadelphia, has sold the Philadelphia 76ers, a professional basketball team that he has owned since 1976. "Fitz" Dixon, prominent in civic affairs in Philadelphia, is a businessman who has also had a hand in other sports including the Eagles football team and the Phillies baseball club. The press has hinted that Dixon may be interested in the Phillies once again.

U.C.L.A.

Badger, T. C. '45/04
Campbell, L. E. '56/06
DeHaven, D. L. '57/04
Demmon, R. H. '26/03
Donagan, P. W. '54/01
Field, B. H. '26/07
Fielden, R. C. '27/06
Flickinger, P. E. '47/06
Francisco, J. B. '27/04
Froelich, F. H. '30/05
Grube, K. P. '30/05
Hall, J. E. '32/06
Hancock, R. A. '43/01
Harvey, R. A. '32/05
Horger, J. C. '53/02
Hoyt, J. R. '29/02
Johnson, P. F. '30/05
Leonard, W. R. '34/07
McKenzie, L. E. '32/02
Pierce, W. R. '51/03
Sanders, F. H., Cmdr '49/06
Spellicy, F. R. '26/04
Trammell, R. L. '70/07
Ulrich, M. L. '26/05
Veneman, C. A. '56/01

CARNEGIE-MELLON

Fleming, W. B. '25/06
Krudener, A. A. '32/03

Helming, J. D. '58/03
Hoffmann, J. H. '71/04
Konschak, R. J. '69/04
Moore, D. L. '71/01
Rex, W. H. '58/02
Shors, W. F. '29/06
Slechta, C. F. '28/03
Varner, G. '67/01

COLORADO

Allie, H. E. '54/01
Andrews, J. W. '50/01
Dereus, V. G. '25/06
Dye, P. H. '35/04
Eckel, J. G. '20/06
Gallagher, W. W. '38/06
Greager, H. C. '29/01
Hall, W. M. '15/06
Hanson, J. E. '39/03
Harry, J., Col. '19/05
Hix, C. A. '21/05
Holford, D. B. '28/01
Johnson Jr., C. P. '39/04
Keirns, G. H. '49/01
Lewis, R. G. '30/02
Mahone, M. R. '37/01
Miller, O. V. '23/06
Ramsey, T. E. '25/02
Robertson, O. L. '18/08

Gillespie, J. J., Ltcol '32/04
Girts, R. '65/01
Griffith, R. L. '25/01
Hamill, J. W. '53/05
Hannan, W. P. '29/02
Herbert, B. A. '58/06
Herkner, G. W. '26/06
Little, A. N. '74/01
Moore, J. E. '73/01
Nolin, A. R. '20/06
Olsen, A. E. '62/02
Olson, H. G. '31/05
Pease, C. L., Dr. '66/04
Phillips, E. S., Prof '28/03
Riddle, W. E. '61/03
Ryberg, E. '64/05
Schade, J. A. '18/05
Smith Jr., J. R. '28/01
Smith, D. C. '27/02
Van Aken, J. L., Dr. '37/05
Van Heiningen, J. J. '57/05
Whittaker, C. G. '20/06
Wright Jr., W. D. '20/02
Yoder, H. F. '23/04

DARTMOUTH

Peacock, J. A. '28/05

Swift, R. F. '59/03

HARVARD

Eaton, S. L. '24/06
Farnham, A. S. '26/06
Hall, L. P. '19/05
Wheeler, C. O. '15/01
Wyman, J. H. '21/01

Armstrong, H. C. '50/03
Austin, K. S. '38/01
Balderson, B. A. '34/03
Baldwin, D. M. '30/04
Bell, J. W. '32/01
Bourn, H. J. '59/04
Carney, J. C. '57/01
Caveney, J. E. '46/03
Chiselli, F. A. '35/01
Christian, H. P., Dr. '33/01
Christian, W. A. '28/05
Gallagher, R. H. '55/06
Given, C. M. '63/03
Gladish, R. L. '61/02
Glos, D. F. '21/06
Glos, R. E., Dr. '22/06
Goranson, G. D. '66/01
Gough, C. A. '57/05
Grater, W. C., Dr. '40/02
Haines, R. W. '29/06
Harper, C. B. '28/02
Hartmann, C. P. '54/05
Henderson, R. D. '42/03
Hodal, R. J. '34/01
Holste, J. R. '54/03
Huppert, W. W. '49/06
Johnson, J. E. '50/03
Kaiser, J. '75/01
Kassautski, K. P. '77/01
Kotovic, C. L. '26/05
Lanternman, J. B. '34/06
LaRue Jr., R. E. '26/05
Lauterbach, W. W. '18/05
Lehwald, J. W. '31/03
Lewis, J. T. '23/01
Llewellyn, R. S. '19/04
Locke III, T. H. '63/04
Lowe, G. K. '31/01
Manning, R. V. '25/05
Marchiando, P. J. '59/04
McCurdy, D. D. '50/04
Monsson, C. D. '38/05
Narsetta, W. J. '58/01
Nelson, G. M. '39/05
Park, S. D. '26/02
Pruett, C. E., Dr. '38/06
Pruett, C. E., Dr. '30/01
Putta, J. G. '39/05
Rhodes, M. G. '57/03
Sanders, P. T. '20/02
Sandvold, C. E. '16/01
Snyder, D. A. '22/05
Snyder, J. L. '54/01
Spiegler, R. W. '43/03
Stambach, H. M. '33/03
Stotlar, S. D. '47/06
Trutter, J. T. '39/06
Van Gerpen, G. C. '36/01
Weibel, J. R. '62/01
Wickman, R. P. '36/04

Franczek, M. A. '78/01
Gabel, R. B. '65/05
Geoghegan Jr., J. A. '76/01
Giometti, R. '77/01
Glossop Jr., D. L. '52/04
Grala, E. M. '49/01
Griglik Jr., C. '50/02
Grosspietsch, J. K. '75/01
Harison, L. C. '47/04
Hedeen, D. K. '44/05
Hong, S. K. '76/01
Hrbek, G. M. '75/03
Jansen Jr., P. '43/06
Janssen Jr., E. G. '47/06
Kegel Pe, R. A. '59/04
Kizior, D. J. '72/01
Kopera, P. M. '75/02
Krafft, R. C. '48/01
Krygiar, B. C. '77/01
Kustin Jr., C. '54/04
Long, L. E. '43/04
Lovejoy, J. W. '58/05
Lukens, R. G. '70/02
Maihook, D. J. '41/05
Morgan, G. A. '30/06
Morrissey, G. M. '62/05
Munini, L. J. '61/03
Novak, V. J. '41/02
Novy, R. F. '44/03
Oldenburg, R. A. '42/01
Olson, R. R. '78/01
Piepenbrink, R. E. '39/06
Rahn, R. W. '51/02
Rogers, R. E. '63/04
Ruda, M. J. '69/05
Rudolph, O. B. '49/02
Sallmann, D. W. '65/07
Sholeen, C. R. '66/02
Sigwald, J. J. '70/01
Smith, C. D. '62/04
Stewart, W. P. '57/06
Tappan, W. W. '49/03
Uram, C. G. '51/05
Vanden Boogart, R. C. '72/01
Veg, J. '47/01
Wage, A. E. '49/06
Weidenmiller, J. E. '41/05
Wendell, M. W. '54/06
Wilt, W. F. '45/02
Youngberg, E. C. '39/02
Zinkel, R. R. '50/04

Arnold, F. J. '23/05
Arnold, L. E. '23/06
Arnold, W. R. '25/05
Babcock, J. R. '65/03
Brooks Jr., M. R. '39/04
Cloys, W. '20/06
Corbin, P. A. '75/01
Culbert, L. L. '68/04
D. Addamio, G. '67/01
Denes, R. '67/01
Drew, D. '59/06
Ethington, R. D. '71/06
Fry, L. V., Dr. '34/05
Grimes, G. C. '65/04
Gunderson, J. M. '56/06
Hall, R. J. '61/02
Hanson, B. C. '38/02
Hanson, R. W. '57/03
Hill, R. A. '74/02
Horgen, I. S. '20/01
Johnson, H. C. '58/02
Johnston, J. R. '56/03
Landis, D. A. '76/01
Miller, A. L. '68/02
Miller, T. E. '69/03
Mino, J. E. '72/03
Nickerson, H. J., Dr. '58/06
O'Conner, W. J. '56/05
Olson, S. '65/05
Palmer, J. T., Dr. '56/02
Paras, G. S. '34/05
Plotz, G. A. '69/04
Riepe, C. R. '35/06
Rule, J. R. '56/06
Samson, L. P. '73/02
Stearns, W. F. '29/06
Sterbenz, F. '59/06
Sterbenz, P. E. '57/05
Stinson, E. '20/06
Thomas, C. W. '52/03
Wedekind, R. R. '61/01
Wharton, J. M. '65/05
Wirth, W. J. '34/05

Wallach, G. S. '76/01
Weber, E. H. '53/04
Widmer, K. '34/04
Williams Jr., H. H. '47/03
Wilson, R. M. '33/06
Young, R. C. '58/04

LOYOLA

Brown, M. D. '70/05
Burrell, M. J. '73/02
Creagh, D. R. '78/02
Farrell, J. M. '68/04
Laubhan, D. A. '68/04
Liebenfrit, D. J. '70/04
Lynch, M. A. '75/02
Morris, B. P. '71/01
Toljanic, J. A. '72/02

LYCOMING

Bartlow, K. P. '65/02
Diana, K. F. '72/02
Dupler, J. R. '69/03
Ellenberger, M. E. '72/02
Harris, D. G. '66/02
Hoover, T. G. '65/04
Lemke, J. D. '69/03
Melick, D. R. '74/02
Platoff, K. S. '75/02
Smith, M. K. '76/01
Wiltsee, A. '66/04
Wineriter Jr., G. L. '71/04

M.I.T.

Boynnton, W. P. '29/01
Redcay, A. K. '34/04

MARIETTA

Broughton, C. L. '61/05
Broughton, R. D. '36/05
Bush Jr., G. E. '24/01
Choquette, N. R. '65/01
Chorpenning, F. W., Ltcol '34/02
Crawford, C. H. '29/06
Crecco, R. D. '57/01
Crone, P. C., Dr. '26/05
Cubelli, G. E. '39/06
Felici, A. '48/06
Forester, C. W. '66/03
Freiberg Do, J. R. '57/02
Frye, J. C. '31/05
Gibbens, W. B., Judge '18/02
Gill, K. D. '59/01
Haveron, W. E. '66/04
Hejl, A. C. '55/04
Heuple, H. C. '60/02
Hickel, N. R. '33/06
Kotchka, J. A. '58/03
Levine, S. D. '71/04
Lord Jr., S. M. '60/02
Merlin, D. G. '56/06
Mohr, M. P., Dr. '49/05
Patton, F. '70/04
Reis, G. V. '73/01
Rempe Jr., E. T. '24/05
Robinson, C. G. '08/06
Rochester, D. A. '62/02
Smith Jr., F. D. '48/06
Thomas, W. H. '46/01
Wartluft, D. L. '60/04
Williamson, D. R. '76/01
Wyman, D. H. '72/02

KENTUCKY

Allen, B. L. '27/05
Bethel, H. L. '37/04
Bischof, F. L. '18/03
Davis, L. B. '31/06
Jones, O. L. '20/05
Kane, J. M. '32/06
Lyle Jr., I. W. '31/05
Manly III, S. '26/05
McCammon, D. K. '31/05
McUddy, C. O. '17/03
Miller, J. W. '33/05
Saunders, W. H., Ltcol '28/04
Smith, K. R. '22/06
Wilson, W. C. '26/06

LAWRENCE TECH

Churchill, G. D. '67/05
Flint, J. P. '77/01

LEHIGH

Abel, R. W. '51/04
Ambrogio Jr., J. N. '39/05
Dworski, L. D. '66/05
Dyre, W. '35/01
Field, A. W. '49/02
French, H. W. '47/02
Gleichmann Jr., T. F. '57/05
Hamilton, R. W., Dr. '52/04
Haviland Jr., R. L., Ltcol '60/05
Hendrick, R. R. '46/01
Hovanec Jr., G. A. '72/05
Koppes, A. W. '50/01
Koubek III, R. '75/02
Krumme III, P. H. '70/05
Lewis, G. B. '63/03
Lutz, J. C. '73/04
Moskowitz, J. '47/05
Mounts, J. S. '46/06
Quinn III, J. J. '74/03
Rankin, C. D. '30/06
Regl, W. E. '74/01
Roe, R. T. '71/02
Sheen, R. T. '30/01
Shepherd, R. M. '38/03
Smith, H. S. '75/02
Sunderland, D. E. '62/05
Wainwright, S. G. '77/01

MASSACHUSETTS

Allen, R. E. '64/02
Benea, C. '35/01
Brewster, D. T. '39/05
Canney, G. G. '26/04
Carpenter, E. S. '21/03
Dodge, T. E. '66/05
Doolittle, A. H. '23/01
Dresser, M. '25/04

"... Alpha Sigma Phi has helped me in so many ways. Taking an active role in offices from Parent's Club Chairman to the Prudential Committee has enabled me to meet and work with people that will have a lasting impression on my life. Alpha Sigma Phi will always be a part of my life. I look forward to working to help enable other brothers benefit from the kind of support I had."
—John Shideler, Purdue

Robinson, J. E. '31/07
Rosing, T. F. '27/06
Schauwecker, K. F. '30/03
Sidells, A. F. '26/06
Treon, D. '27/05
Turner, R. '29/02

CASE

Binder, G. P. '39/04
Cook Jr., A. J. '39/06
Garrison, D. A. '39/05

CENTRE

Adams, M. W. '32/03
Robinson Jr., J. H. '36/04
Willett, J. R. '32/05
Williams Jr., P. A. '80/04

CHICAGO

Droegemueller, A. C. '39/05
Elliott, C. B. '22/04
Freidheim Jr., L. E. '30/06
Hulbert, H. G. '21/05
Laves, U. R. '20/01
McDonald, G. H. '20/06
Puschel, W. E. '29/04

CINCINNATI

Ayers, M. V. '37/05
Beck, D. R. '55/04
Beecroft Jr., W. G. '55/05
Brettschneider, D. J. '69/05
Cattiller, J. B., Ltcol '56/06
Cohorn, G. P. '72/05
Durst, N. J. '37/04
Eberl, P. H. '72/03
First, T. E. '54/06
Honious, G. L. '61/03
Loewenthal, B. J. '66/06
Mente, P. A. '75/01
Murphy, D. W. '64/03
Peake, D. Ltjg '68/02
Schock, D. L. '69/06
Segerer, R. W. '54/03
Sipes, I. G., Dr. '61/02
Smith, L. C. '64/05
Vanatta, H. C. '37/04

COE

Clark, K. R. '28/01
Crane, M. A. '70/03

Sellers, J. E. '29/07
Strang, H. L. '24/01
Thomas, E. W. '39/06
Weese, H. J. '61/06
Yetter, P. A. '23/01

COLUMBIA

Bliss, P. '21/06
Carr, W. E. '28/05
Hall, S. C., Dr. '20/03
Hawkins, R. C. '16/06
Kidder, J. H., Bgen '19/06
Laboda, G. T. '41/03
Mammen, E. W. '26/01
Mueller, C. R. '22/06
Palmer, D. O. '26/06
Poceluko, N. '49/06
Scovill, F. K. '18/03
Weldon, E. D. '13/06

CONCORD

Randall, S. R. '72/02
Richardson, R. L. '66/01
Wilson, T. G. '77/01

CONNECTICUT

Antes, J. E. '51/06
Barton, R. R. '64/06
Dambrosio, D. '61/06
Depatie, W. J. '43/01
Griswold, D. E. '50/05
Grzyb, B. S. '66/01
Hogan, A. G. '51/06
Joyell, J. J. '63/01
Korponai, D. A. '63/03
Miller, R. E. '49/04
Munson, B. E. '62/01
Murray, L. P. '32/04
Nolan, C. V., 1Lt '64/01
Primavera, R. E. '54/02
Schott, E. E. '51/06
Somody, J. W. '60/01
Vanek, R. J. '64/07
Velluro, J. W. '50/01
Williams, T. L. '66/05

CORNELL

Alden, J. C., Dr. '52/05
Balcar, G. P. '51/01
Beltz, J. P. '54/01
Collamer, D. J. '76/01
Conger III, G. B. '56/06
Delaney, W. E. '54/01
Dunbar, R. A. '50/06
Ellinger, V. P. '73/02
Freeman, J. S. '66/05

DAVIS & ELKINS

Andersen, K. J. '57/02
Bunnell, R. B. '49/02
Cathie, W. C. '63/05
Dakes, M. G., Ltcol '56/05

Deacon, D. B. '63/06
Downes, S. C. '53/01
Drenkard, A. A. '49/01
Greer III, R. C. '50/05
Gudz, W. '49/06
Hudson, G. N. '63/04
Hunt, L. B., Lt '64/02
Libby Jr., H. J. '50/01
Libby, W. R. '49/03
Morgan, H. M. '52/02
Seybolt, R. C. '61/01
Shaffer, E. J. '64/03
Smith Jr., G. A. '58/01
Stevens, R. W. '69/03
Thoburn, T. J. '61/02
Wendling, I. P. '50/03
Yulo, F. R., Dr. '49/06

DETROIT INST TECH

Barton, B. G. '68/05
Barton, G. G. '68/06
Standish, J. G. '67/02

EASTERN MICHIGAN

Stegeman, J. '66/02
Suter, J. D. '77/01
Wilson, K. D. '69/01

FINDLAY

Rimer, T. A. '67/01
Vanbrunt, H. A. '69/01

FRANKLIN & MARSHALL

Bair, C., Dr. '40/06

HARTWICK

Andersen, T. D. '70/05
Beecher, R. V. '35/03
Bernhard, J. V. '77/02
Curtis, D. A. '75/01
Gerds, R. H. '70/04
Holly, N. W. '68/01
King, D. C. '68/03
Konash, R. A. '73/01
Kratoville Jr., H. J. '50/03
Lisuzzo, S. J. '73/02
Marvin, W. R. '72/02
Roggensack, H. J. '76/01
Sawicki, R. A. '74/01
Smith, J. E. '61/03
Storch, P. T. '72/01

ILLINOIS TECH

Adams, L. P. '74/01
Anderson, J. A. '50/01
Anderson, R. F. '39/01
Anderson, W. E. '41/05
Anker, E. J. '55/05
Balza, J. F. '68/05
Basile, J. F. '75/03
Browning, R. W. '44/03
Bruckner, A. A. '46/03
Buechler, J. R. '60/03
Carey, N. W. '41/06
Carlson, R. N. '66/05
Collier, T. P. '39/06
Corrigan, M. F. '68/02
Crowley, M. A. '77/01
Davis, A. L. '73/05
Dekovic Jr., C. W. '54/03
Deuter, C. H. '39/04
Devore, P. E. '58/02
Evanoff III, S. P. '77/01
Faulkner, F. L. '43/02
Faulkner, F. L. '43/06
Fijak Jr., T., Cmdr '58/06

INDIANA INST TECH

Cates, R. '71/01
Eversole, K. B. '71/03
Jaessing, F. A. '67/02
Rauscher, K. R. '70/04
Vitko, R. P. '71/06

IOWA

Akre, C. T. '28/05
Brandhorst, G. H. '27/03
Carlson, L. R. '27/01
Claassen, H. J. '28/01
Engeseth, H. B. '25/01
Hanna, K. L. '29/01
Hanson, A. W. '28/06
Harrington, R. J. '28/05
Hutchinson, E. J. '24/05
Jorgensen, A. P. '32/01
Manchester, W. H. '29/01
Masters, G. A. '30/01
Maurer, N. L. '33/01
Sears, J. H. '38/01

IOWA STATE

Anderson, W. J., Dr. '55/03



Robert E. Miller, Connecticut '49, Brooklyn, CT has been elected chairman of the New England Board of Higher Education, succeeding Rhode Island Senator John C. Revens. Miller, past Grand Senior President, is president of Quinebaug Valley Community College. The Board operates co-operative programs among New England's 261 colleges and universities.

Loyalty Fund

Feindel, D. A. '62/03
Harlow, N. L. '13/06
Luce, P. E. '36/05
Miller, J. C. '38/02
Poey, F. '21/03
Poremba, R. A., Lt
'67/01
Shipman, L. C. '37/04
Stranger, H. L. '37/04

MEMBERS AT LARGE
Anderson, J. R. '44/05
Brown, G. C. 'Mj. Gen.
'44/03
Clark, F. V. '44/04
Herman, D. E. '69/05
Robison, C. V. '41/03

MIAMI
Pitts, T. R. '53/02
Riddle III, P. J. '52/05

MICHIGAN
Bartley, L. D. '34/05
Beckman, W. A. '54/05
Benjamin Jr., H. S.
'29/03
Bieser, C. O. '47/06
Bohn Jr., R. T. '43/06
Bomberry, M. F. '66/04
Brady, F. J. '30/03
Bronson, K. R. '38/01
Brown, D. G. '65/04
Cady Jr., S. H. '24/04
Carscallen, C. H.
'57/05
Coale, F. A. '59/05
Damm, R. M. '30/01
Devine Jr., W. D. '60/05
Dodd, R. '42/03
Dunham, D. B. '24/06
Dunham, H. L. '17/05
Dunn, H. S. '49/06
Eades, C. C. '19/03
Engel, C. S. '30/05
Garner, J. E. '29/04
Grinnell, H. S. '25/05
Hagar, C. N. '37/03
Hammial, D. '29/06
Hodge, J. D. '47/01
Hofelich, R. M. '27/05
Holzhauer, R. N. '40/05
Huber MD, J. F. '22/03
Jacobson, E. A. '74/01
Janet, R. J. '41/07
Jung, R. H. '29/02
Kleinhaus, F. W. '63/05
Lauria, L. '62/05
Lavalley, D. R. '56/01
Magnus Jr., A. H.
'51/04
McClintie, W. A. '33/01
McDonald, N. S. '29/01
McWood, A. B. '49/03
Murray, J. R. '40/06
Nelson, K. M. '39/04
Osgood, R. K. '20/01
Pederson Jr., E. A.
'34/05
Pomeroy, J. A. '26/04
Powell, D. S. '67/03
Puffer III, J. W. '61/05
Robison, S. W. '27/05
Rockershousen, W. F.,
Lt '56/04
Ruhl, R. C. '60/06
Schwark, J. R. '65/04
Sellers, C. V. '14/05
Shirrell, R. D. '47/02
Shoup Jr., G. L., Dr.
'47/06
Sturm, W. D. '56/03
Tessmer, R. '48/05
Thompson, R. E. '64/06
Thornley, R. B. '33/01
Vossberg, G. O. '43/01
Walbridge, W. E. '35/06
Waterbury, W. R.
'43/05
Weaver, T. D., Gen
'13/06
Wendt, T. A. '70/02
West, L. R. '38/03
Wickman, M. A. '74/01
Wieneke, R. F. '19/07
Wilson, W. W. '47/05
Wilt, T. R. '65/04
Wood, D. L. '58/05
Yeagley, J. W. '28/01
Zahnow, O. C. '37/05

MINNESOTA
Anderson, K. E., Dr.
'30/05
Bryan, T. J. '31/04
Clark, L. S. '20/05
Denison, C. A. '30/07
Gallagher, T. F. '17/01
Pihlstrom, C. M. '30/01
Regnier, L. A. '23/06
Smith, L. P. '19/05
Steiger, E. L. '19/04
Thompson, T. M. '30/05

MISSOURI
Bredall MD, J. J.
'29/02
Clapper, W. O. '57/03
Gill, B. F. '46/05
Gwinner, D. C. '55/07
Jurgens, G. A. '31/01
Leach, N. E., Rev.
'61/02
Lemon Jr., J. L. '59/03
Monsees, L. T. '29/01
Murray, R. W. '30/05
Owen, C. M. '29/01
Reid, J. I. '36/05
Rixman, S. F. '49/05
Stewart, W. D. '29/01

MISSOURI VALLEY
Bernhardt, J. G. '62/06
Blackburn, J. L., Dr.
'49/04
Brown, R. C. '66/02
Dowil, R. L. '68/06
Edwards, K. E. '71/05
Forney, G. R. '68/04
Jager, K. A. '68/06
Keller, W. H. '70/03
Kohl, K. A. '69/03
Lee, L. M. '56/05
Minor Jr., T. M. '77/01
Molander, L. R. '61/03
Neill, W. E. '58/02
Porter, K. G. '74/02
Scheibel, E. J. '72/02
Sleeper, F. H. '49/04
Spaulding, E. D. '50/05
Sullivan, T. R. '72/01
Surles, L. E. '54/03
Thomas, D. A., Capt
'69/05
Vanselow, R. D. '50/02

CHARLESTON
Belknap, L. K. '68/04
Cottrell, J., Dr. '61/01
Davis, A. I. '65/05
Holliday, R. J. '63/06
Quinn, S. R. '66/01
Roberts, B. '62/05
Treadwell, W. F. '67/03
Tunajek, J. R. '60/05
Wallis, G. E. '76/01

MOUNT UNION
Giusti, E. G. '35/02
Heffelfinger, D. D.
'30/01
Hutton, C. O. '29/03
Keller, C. C. '29/04
Kohl, M. F., Dr. '30/04
Krebs, F. J., Dr. '29/07
McFarland, V. A. '29/06
Thoma, D. J. '29/05

MICHIGAN STATE
Ash, F. '62/04
Beyer, A. R. '59/06

Kappeler, A. A. '56/02

MIDDLEBURY
Anderson, K. W. '25/07
Baines, E. A. '40/05
Barmby, J. '40/01
Cunningham, R. G.
'30/02
Donnelly, J. L. '25/03
Frank, H. J. '25/05
Hallquist, S. C. '25/01
Happ Jr., H. '25/01
Happ, C. L. '25/06
Miesse, A. G. '41/04
Powers, W. H., Dr.
'35/05
Siipola, G. T. '30/05

MILTON
Barranco Jr., W. S.
'65/05
Blumreich, R. S. '46/02
Hein, L. K. '56/02
Moss, M. S. '66/03
Mugger, T. C. '49/06
Paul, E. R. '47/01
Putnam, W. H. '64/02

MINNESOTA
Anderson, K. E., Dr.
'30/05
Bryan, T. J. '31/04
Clark, L. S. '20/05
Denison, C. A. '30/07
Gallagher, T. F. '17/01
Pihlstrom, C. M. '30/01
Regnier, L. A. '23/06
Smith, L. P. '19/05
Steiger, E. L. '19/04
Thompson, T. M. '30/05

MISSOURI
Bredall MD, J. J.
'29/02
Clapper, W. O. '57/03
Gill, B. F. '46/05
Gwinner, D. C. '55/07
Jurgens, G. A. '31/01
Leach, N. E., Rev.
'61/02
Lemon Jr., J. L. '59/03
Monsees, L. T. '29/01
Murray, R. W. '30/05
Owen, C. M. '29/01
Reid, J. I. '36/05
Rixman, S. F. '49/05
Stewart, W. D. '29/01

MISSOURI VALLEY
Bernhardt, J. G. '62/06
Blackburn, J. L., Dr.
'49/04
Brown, R. C. '66/02
Dowil, R. L. '68/06
Edwards, K. E. '71/05
Forney, G. R. '68/04
Jager, K. A. '68/06
Keller, W. H. '70/03
Kohl, K. A. '69/03
Lee, L. M. '56/05
Minor Jr., T. M. '77/01
Molander, L. R. '61/03
Neill, W. E. '58/02
Porter, K. G. '74/02
Scheibel, E. J. '72/02
Sleeper, F. H. '49/04
Spaulding, E. D. '50/05
Sullivan, T. R. '72/01
Surles, L. E. '54/03
Thomas, D. A., Capt
'69/05
Vanselow, R. D. '50/02

CHARLESTON
Belknap, L. K. '68/04
Cottrell, J., Dr. '61/01
Davis, A. I. '65/05
Holliday, R. J. '63/06
Quinn, S. R. '66/01
Roberts, B. '62/05
Treadwell, W. F. '67/03
Tunajek, J. R. '60/05
Wallis, G. E. '76/01

MOUNT UNION
Giusti, E. G. '35/02
Heffelfinger, D. D.
'30/01
Hutton, C. O. '29/03
Keller, C. C. '29/04
Kohl, M. F., Dr. '30/04
Krebs, F. J., Dr. '29/07
McFarland, V. A. '29/06
Thoma, D. J. '29/05

Wehner, R. S. '29/01
Williams, J. L. '49/05

N. C. STATE
Coward, W. B. '38/06
Galba, E. P. '31/03
Hoffman, J. R. '76/03
Kronenwetter, S. M.
'79/02
Lindstrom Jr., J. H.
'30/05
Lovelace, E. K. '36/05
May Jr., W. L. '42/02
Shore, T. J. '77/02

NEBRASKA
Cole, D. F. '13/07
Denning, R. H. '38/06
Dunn, W. H. '39/05
Felton, H. W. '21/05
Hyde, R. W. '41/06
McGinnis, K. T., Dr.
'30/04
Parks, N. C. '37/06
Woods, E. M. '36/06

NEW HAMPSHIRE

Coldwell, H. I. '31/03

NJIT
Doby, G. F. '44/07
Elias, M. J. '26/01
Gauch, J. H. '50/06
Reibel Jr., P. F. '47/04
Sarnowski, W. P.
'30/01
Wolpert, F. S. '26/06

NORTHERN MICHIGAN
Blemberg, P. J., Capt
'69/04
Deland, T. '70/04
Mitchell, P. J. '77/02
Strutzel, P. J. '69/01

OHIO NORTHERN
Arrick, D. L. '68/01
Blair, J. F. '68/02
Ciaston, S. F. '72/05
Emerson, J. '65/05
English, T. K. '74/02
Fornadley Jr., G. T.
'55/06
Franklin, J. C. '58/01
Guillozet, J. L. '66/03
Hall, E. H. '54/01
Hansen, H. J. '46/05
Henning, L. R. '48/06
Kubis, R. J. '67/05
Needy Jr., J. A. '55/06
Schaffner, C. R. '72/05
Smith, V. L. '66/04
Souder, R. E. '77/01
Sponseller, H. R.
'55/03
Sponseller, J. M.
'68/01
Van Dyne, J. R. '72/02
Vogt, T. F. '69/05

OHIO STATE
Armstrong, G. S. '43/05
Aten, F. G. '40/06
Banyots, J. J. '68/04
Bauder, J. R. '55/01
Boller, G. M. '27/03
Bonar, E. W. '48/01
Boughner, E. L. '25/06
Breneman, K. C. '53/01
Briggs, G. F. '55/04
Cairns, M. '68/02
Calaway, C. P. '19/06
Calhoun, R. L. '28/06
Cameron, J. R. '39/03
Dixon, F. W., Dr. '30/02
Drescher, C. H. '53/01
Gierhart, G. R. '43/04
Harper, C. L. '40/05
Hazelton, R. F. '47/01
Herman, H. A. '24/05
Igo, R. B. '64/03
Jahn, A. C. '27/05
Koch, G. G. '61/07
Kohl, J. R. '39/05
Lape, D. K. '54/05
Lathrop, G. L. '23/07
Lemon, G. E. '31/06
Linn, G. L. '49/05
Mardis, C. A. '68/01
McLean, C. R. '53/06
Millay MD, G. F. '40/06
Mohr, P. D. '53/06
Parsons, K. Y. '61/04

Potts, N. D. '28/05
Pritchett, C. P., Dr.
'29/06
Pusti, N. '53/01
Reece, R. M. '51/02
Ripple, H. L. '40/06
Rogers, S. G. '77/01
Roos, H. S. '27/06
Roth, R. C. '58/06
Schellenger, S. W.
'27/01
Schuster Jr., H. L.
'45/06
Sims, J. H., Capt '36/04
Stegmiller, H. W. '32/06
Tuttle, G. D. '23/06
Waltz, R. R. '22/03
Wooley, C. '36/05
Young, R. W. '22/03

OHIO WESLEYAN
Arai DDS, H. Y. '54/02
Beck, G. C. '40/06
Betsch, W. D. '29/06
Blind, H. D. '52/04
Broberg, W. E. '47/06
Burns, R. F. '32/04
Crump, R. J. '62/01
Cunningham Jr., L. L.
'29/06
Davis, E. C. '41/02
Elwood, W. K., Dr.
'47/06
Fargo, R. B. '57/01
Graham, W. F., Lt
'63/01
Greene, M. F. '30/04
Guest, T. W. '47/02
Hatch, E. R., Dr. '48/01
Hetz, S. C. '62/03
Hockman, W. H. '35/06
Hull, H. A., Rev. '39/05
Johnston, R. F. '34/04
Lawson, K. S. '51/01
Lovell, C. E. '27/06
Lovell, E. M. '33/06
McCammon, M. B.
'20/02
Mellen, J. E. '36/02
Mullin, G. B. '26/01
Naylor, C. I. '32/04
Ott, D. C., Dr. '31/02
Otto, C. C. '53/05
Plunkett Jr., J. A.
'49/03
Polandick, C. '55/05
Pratt, S. F. '23/07
Recker, T. L. '35/06
Rees, W. H. '28/05
Reiter, D. K. '59/05
Robertson, W. M.
'23/01
Smith, E. M. '30/01
Stanley, C. M. '13/03
Stephens, J. H. '48/06
Sullivan, L. D. '49/05
Swisher Jr., J. H.
'47/02
Williams, R. T. '21/02
Zellner, J. M., Dr.
'62/01

OKLAHOMA
Ashton, F. T. '29/03
Barnett, W. J. '32/06
Breeden, R. H. '26/06
Clark, J. A. '30/04
Colbert, B. R. '48/06
Collins Jr., J. E. '53/03
Crnkovich, J. T. '48/06
Damelio, C. '69/01
Daniels, C. E. '61/05
Everett, J. P. '37/07
Fleet, J. J. '24/05
Francis, J. E. '56/06
Gordon, W. T., Dr.
'50/05
Harmon, J. T. '59/03
Janson Jr., N. F. '68/01
Johnston, G. M. '52/02
Joyce, W. V. '24/07
Knezek Jr., E. S. '54/02
Lenau, C. L. '28/04
Link, H. W. '49/02
Lucy, R. F. '51/02
Mathes, W. A. '70/06
McGee, J. L. '33/06
Montgomery, R. P.
'23/05
Montgomery, R. S.
'26/03
Morrison, R. I. '29/01
Mount, P. C. '69/05
Pierce, I. J. '35/06

PENN STATE
Astorino, L. D. '65/07
Ayres, M. H. '32/02
Bader, G. '23/06
Beagle, C. W. '30/01
Beck, S. E. '37/02
Boyd, G. H. '36/03
Breedlove, A. M. '77/01
Brower, R. F. '56/05
Browner, H. S. '56/01
Bufalini, B. A. '74/01
Butler, P. P. '48/05
Byrnes Jr., T. C. '56/01
Colbaugh, J. E. '67/04
Collins, A. B. '63/06
Collins, E. W. '74/02
Custer, S. A., Col.
'41/06
Dare, J. H. '69/02
Dean, R. C. '61/05
Deysher, J. E. '76/02
Doyle, R. P. '56/07
Duzy, F. J. '63/01
Eaglesham, T. W.
'33/04
Elfner, W. B. '77/01
Eshenbaugh, W. A.
'62/03
Fallon III, T. F. '41/05
Ferrari, R. A. '56/04
Ferraro, J. L. '57/06

Scott, N. K. '26/06
Sharp, G. H. '49/05
Terry, S. L. '66/03
Thomas, J. S. '48/06
Travis, D. E. '67/02
Trolinger, S. C. '70/02
Welch, W. F. '35/05
Wiggins, W. E. '23/06
Willits, L. M. '23/01
Womack, T. D. '72/03
Woody, W. P. '62/04

OREGON STATE

Alderson, R. L. '64/01
Berg, G. D. '76/03
Bohen, J. D. '50/05
Bree, J. L. '50/07
Carson, W. E. '33/04
Chapman, K. A. '31/01
Compton, M. A. '23/04
Dexter, R. A. '60/02
Faucett, R. L. '20/03
Hagg, O. N. '23/05
Harlow, C. L. '76/03
Havey, E. '51/01
Hawley, N. R. '25/06
Josh, M. W. '76/02
Kennedy Jr., J. D.
'68/03

Gilbert, P. F. '41/06
Good, W. G. '58/06
Graham Jr., S. T.
'31/01
Griffith Jr., A. A., Ltcol
'58/03
Gromiller, J. W. '51/05
Guthrie, C. A. '60/01
Hallman, K. H. '30/01
Harris Jr., A. C. '32/04
Hicks, A. J. '36/01
Hinks, R. R. '42/06
Houghton, W. R. '37/01
Jones, H. L. '30/06
Jones, J. K. '26/06
Kistler, D. R. '56/03
Kosinski, J. G. '58/03
Krapf, H. F. '42/01
Laverty Jr., E. '30/01
Lechthaler, R. C.,
Ensign '60/01
Leonard, R. '44/05
Lindenmuth, W. E.
'35/01
Mamula, W. '77/02
Martin, A. L. '48/03
Martinez, M. A. '51/04
McCarthy, J. D. '66/01
Megargel, C. E. '22/06

Kilgore Jr., J. G. '68/05
Knox, C. E. '46/01
Lasor, W. S., Rev.
'28/04
Little, B. A. '19/05
Mitchell, C. H. '40/06
Moomaw, S. J. '52/04
Phillips, C. J. '25/01
Place Jr., J. D., Lt
'39/03
Puzio, T. J. '50/03
Russell, G. B. '31/05
Scholtes, P. '58/01
Schweikert, D. K.
'42/04
Scott Jr., R. E. '26/05
Sunder, W. G. '28/03
Taylor, A. M. '19/02
Thorp Jr., C. E. '39/04
Vanranst, M. A. '34/03
Wagner, F. '28/02
Waite, F. R. '43/06
Washburne Jr., L. F.
'35/01

PRESBYTERIAN

Beckham, R. S. '28/04
Blankenship, D. S.
'28/06

"Alpha Sigma Phi creates a special bond and common direction which gives a group of men a chance to experience a microcosm of life . . . men with different backgrounds and interests . . . yet retaining a unity which underlines the need we have for one another. It truly has been the most valuable experience of my life and I shall forever strive to make such an experience available to those who seek it."—**Dirk Vause**, in his message to Gamma Chi chapter as he completed his term as HSP.

Knowlton, D. L., Maj
'63/03
Legore, D. D. '57/01
Lieuallean, R. M. '58/02
Lund, W. H. '24/05
Lundberg, R. H. '30/01
Morrow, R. W. '61/01
Newberg, J. G. '75/01
Nickelsen, C. D. '77/01
Nixon, R. A. '24/03
Parkhurst, N., Maj
'56/02
Penson, H. N. '46/04
Roberts, H. K. '40/06
Robertson, A. A., Maj
'63/06
Russell, E. E. '20/05
Sanford, D. D. '47/04
Schmoke, S. A. '63/03
Strong, H. W. '27/06
Sturges, R. M. '38/03
Vandel, G. T. '27/03
Veit, K. R. '69/02
Waters, M. K., Ensign
'73/03
Welch, W. H. '21/06
Wolf, T. S. '73/03

Mills, D. F. '47/04
Nicklas, J. W. '19/03
O'Haren, T. J. '54/05
Page Jr., V. C. '37/07
Parmley, H. M. '28/05
Patton, J. M. '33/06
Perry, D. G. '42/05
Pilluski, H. '47/02
Pischke, R. O. '50/04
Prystowsky, E. N.
'66/01
Rankin, P. B. '23/06
Reichenbach, N. H.
'21/06
Rodda, N. F. '29/05
Selden, J. W. '38/07
Skoglund Sr., C. M.
'18/06
Skoglund, R. W.
'78/01
Smith, R. H. '54/06
Sowers, C. W. '53/03
Starnes, V. R. '76/01
Stroup, D. B. '77/02
Thompson, R. D. '53/04
Van Valkenburg, J. F.
'40/06
Vohs, C. J. '75/02
Walker, R. A., Col.
'55/04
Wescott, G. T. '50/07
Whisler, J. H. '33/03
Wickland Jr., E. H.
'59/05
Williams, H. S. '35/02
Witmer, C. M. '40/02
Woodring, L. R. '34/01

PENNSYLVANIA
Allison, G., Lcmdr
'66/03
Bentz Jr., L. W. '45/05
Blaszczysk, J. S. '76/03
Boag, W. A. '19/06
Boardman Jr., R. E. '66/01
Brown, W. R. '30/03
Brummer, J. A. '28/03
Cawley, R. C. '38/06
Decker, M. F. '28/07
Dunn, T. L. '51/03
Eckersley, R. N. '39/01
Evans, D. J. '30/01
Fitts, J. '19/02
Gledhill Jr., H. W.
'29/01
Grafton, R. W. '50/01
Hall Jr., F. '57/01
Johnson Jr., G. S., Dr.
'47/04

Cranford, W. H. '34/01
Dawson, C. C. '72/01
Freeman, T. B. '51/04
Freeman, W. S. '77/01
Garrett, D. T. '61/02
Love, J. T. '75/01
Stankewich, S. R.
'76/01
Taylor, T. E. '59/01
Varn III, J. B. '74/03
Williams, R. C. '62/03
Wilson, G. D. '39/01
Wilson, J. H. '32/01

PURDUE
Alexander, D. H. '65/03
Allen, C. D. '72/05
Allen, E. N. '71/04
Allen, R. A. '43/05
Anderson, M. L. '75/01
Baker, R. D. '73/05
Cady, D. W. '66/03
Caldwell, W. R. '58/03
Clarke, D. W. '68/02
Craty, S. F. '72/02
Cunningham, D. G.
'72/05
David, S. R. '73/03
Dickerson, J. N. '71/02
Eickhoff, D. R. '64/03
Faulkner III, F. L.
'71/04
Ford, L. C. '72/03
Frapwell, R. T. '72/05
Froman III, C. A. '76/02
Giunipero, L. C. '67/03
Grossman, F. A. '39/01
Haller, D. E. '76/01
Hasse, R. M. '76/01
Hass, W. A. '75/01
Hood, G. A. '72/06
Hudson Jr., C. E.
'61/01
Karpick, D. M. '71/02
Krejci, W. G. '67/06
Kroger, K. G. '71/01
Kuchar, R. A. '58/06
Kurschner, J. G. '74/01
Leech, J. N. '69/05
Leeper, R. W. '72/03
Maxted, W. R. '44/06
McDonald, W. G.
'42/01
Meyer, R. A. '67/02
Mitchner, J. C. '73/01
Morgan, D. R. '57/01
Mouw, H. J. '46/06
Murphy III, P. F. '69/03
Newgard, J. R. '39/05



"Not my courses, but Alpha Sigma Phi has been the most influencing factor upon me. I have learned everything from how to strip and wax the floor to how to eat at the head table when there is a dinner guest. I've learned about people: how to communicate to them, how to motivate them, how to lead them, how to follow them, how to help them, how to learn from them." —Ken Sprong, Purdue

Presser, E. R. '61/01
Price, D. A. '65/01
Richey, R. C. '69/04
Rorke Jr., J. L. '56/01
Schrader, J. D. '64/04
Shearer, L. E. '48/02
Shute, L. A. '63/06
Sinise, G. A. '70/03
Skidmore, T. A. '71/01
Smith, S. W. '66/05
Stafford, T. H. '66/05
Stephan Jr., R. E. '65/01
Sum, R. N. '52/03
Topel, R. A. '75/02
Villard, M. G. '75/01
Warner, R. L. '76/01
Weinhardt, S. A. '72/05
White, C. R. '77/01
Williams, H. W. '69/04
Wood, R. P. '55/06
Wright, W. P. '70/03
Yeakley, M. L. '72/03

RPI

Caola Jr., R. J. '73/01
Conte, G. R. '73/01
Dolbear, R. L. '55/01
Fonseca, K. J. '77/01
Friedman, R. A. '77/01
Gris, J. J. '62/01
Hoefflin, J. R. '76/01
Hovsepian, D. M. '74/01
Imbriale, D. J., Mr. '75/01
Kirst, M. R., Lt. '74/01
Lieberman, J. W. '77/01
Martin Jr., W. J. '75/02
Nava, E. L. '61/05
Olender, E. J. '67/06
Silverman, B. C. '76/01
Smith, G. T. '43/03
Stephenson II, H. L. '76/02
Vennett, R. M. '61/03

RIO GRANDE

Mills, T. R. '73/03
Smyser II, R. H. '72/01
Taylor, H. C. '73/04
Wiltshire, D. D. '76/01

RUTGERS

Aaroe, W. H. '38/01
Baier, F. D., Dr. '31/01
Berry, C. A. '53/01
Buch, R. S. '71/01
Dean, J. E. '37/06
Deschu, J. C. '33/01
Eisenman, R. W. '73/06
Ennis, R. N. '53/01
Essig, J. L. '47/01
Fritts, T. W. '66/05
Gebler, K. A. '39/01
Gilde Jr., L. C. '47/05
Gordon Jr., J. F. '35/06
Holloway Jr., G. E., Dr. '31/05
Kleczo, T. C. '75/01
Kramer, G. A. '31/05
Kunigonis, J. J. '71/04
Law, H. E., Dr. '31/01
Maley, M. A. '68/02
Meyer, R. C. '43/01
Morrow, J. K. '60/01
Moyer, T. T. '67/01
O. Gorman, K. E. '76/01
O'Neill, J. F. '62/06
Ort, G. H. '31/05
Pannucci, J. '68/06
Peters, R. H. '31/01
Petty, R. K. '31/06
Piefer, D. M. '62/04
Senerchia MD, F. F. '31/05
Seponara, F. C. '64/02
Shafer, K. '58/06
Sider, A. '42/01
Somers, G. M. '49/04
Steiner, J. R. '65/02
Strassburger, P. J. '32/01
Wheaton Jr., N. E. '31/06

SACRAMENTO

Byer, J. R. '61/01
Carston, A. J. '63/02
Monk, L. P. '60/06
Petersen, M. R. '67/04
Sherwood, R. E. '67/06
Sipes, S. R., Lcmdr '63/04

SLIPPERY ROCK

Cherney, W. J. '78/01
DePaul, L. J. '73/05

ST. JOHNS

Smith, E. I. '32/06
Woodman, R. G. '32/03

STANFORD

Acres, T. H. '24/01
Baty, J. N., Dr. '48/04
Blair MD, J. D. '28/03
Bradley, G. E. '25/05
Brown Jr., N. '38/03
Campbell, J. B. '41/06
Campbell, K. W. '42/02
Canear, J. '49/06
Conlin, W. R. '33/05
Cowgill, F. H. '17/05
Culp, H. G. '49/05
Ducommun, E. G. '39/03
Gard, J. J. '48/02
Gonser, W. L. '50/03
Hancock, J. W. '55/06
Hanson, D. R. '53/06
Hasserot, J. J. '52/04
Koepke, F. H. '39/04
Lahusen, G. '47/06
Langton, B. E. '51/01
McCourt, P. E. '56/06
Melvin, S. R. '40/04
Moore Jr., J. E. '17/01
Parker, M. M. '60/01
Phillips, D. E. '61/06
Priest, D. E. '51/03
Rea, E. J. '36/02
Richardson, E. H., Col. '29/01
Russell, J. D. '30/07
Sale, D. B. '47/02
Scatena, J. '29/01
Stroud, W. M. '74/03
Sturgeon, J. A. '54/05
Templeton, R. P. '28/07
Weingand, C. '49/01
Winther, R. '29/05
Yost, F. M. '37/06

STEVENS TECH.

Barry, A. C. '61/06
Biamonte, R. V. '42/03
Bison, R. J. '63/02
Bradshaw, R. W. '69/03
Brice, J. '68/05
Brooks, A. E. '65/02
Cangelosi, J. V. '67/06
Cassidy, T. F. '56/02
Crone, L. A. '26/05
Ermisch, A. R. '26/06
Fielding, A. W. '38/02
Forstlund, R. '59/04
Gibbs, J. R. '42/05
Goff, S. B. '73/01
Goldfarb, C. M. '75/02
Kaugerts, J. E., Dr. '60/01
Kugler, A. N. '26/06
Lidstrom, J. A. '57/06
Mais, J. W. '55/01
Malik, J. M. '62/01
McCullough, W. A. '62/06
McKenzie, A. A. '59/02
McKimm, T. '61/03
Natanson, P. S. '68/02
Oliver, B. H. '26/07
Scheidt, C. P. '66/05
Schutte, W. G. '70/02
Skoblar, L. T. '66/03
Stein, S. A. '65/02
Stemmle, R. W. '59/03
Stengel Jr., C. W. '40/06
Stock, G. C. '62/05
Sundberg, E. B., Col. '29/05
Talbot, J. D. '63/04
Tamulevich, J. J. '69/06
Tobin, R. W. '26/06
Wohlmann, C. A. '63/06
Yanulevich, C. J. '77/02
Zwack, R. T. '26/06

SYRACUSE

Cusumano, J. F. '48/02
Hintermister, F. A. '51/02
Merrick, W. R., Dr. '37/01
Morton, P. S. '39/01
Oberfell, J. W. '49/03

O'Hara, A. P. '38/05
Serafini, A. '35/02
Snyder, L. J. '39/02
Thompson, W. P. '25/01
Wassum, J. S. '25/02
Wells, T. F. '57/03

TARKIO

Kramer, K. A. '71/01

TOLEDO

Ahrberg Jr., W. R. '37/01
Anderson, D. W. '65/02
Andre, G. J. '63/03
Aredy, J. M. '52/05
Bensch, A. C. '65/05
Boor Jr., R. L. '55/06
Butler, J. A. '57/03
Cobb, T. W. '76/01
Dean, C. '42/02
Douglas, A. G. '51/03
Gregor, J. H. '50/06
Haden, J. W. '59/02
Hagale, R. G. '49/05
Hethrick, H. H. '37/04
Hutchinson, J. R. '62/04
Lange, W. H. '59/05
Layman, R. C. '74/01
Marsh, L. A. '59/01
Meyers, M. C. '53/01
Myers, J. S. '61/04
Myers, W. G. '47/04
Perry Jr., E. W. '66/01
Pfander, L. V. '49/01
Poirier, T. '62/04
Powers, D. A. '37/01
Redfelsen, D. E. '75/02
Redmond, R. '65/06
Reif, C. R. '48/01
Schwind, J. P. '75/01
Schwyn, J. A. '63/02
Sigler, C. O. '69/01
Stall, H. P., Dr. '61/02
Steves, J. H. '75/01
Stoockley, J. T. '46/02
Syring, M. '60/05
Towse, R. '53/01
Traudt, J. M. '74/01
Youssef, G. '74/01
Zaenger, J. '56/02

TRI-STATE

Adair, G. M. '79/01
Alfieri, J. E. '53/02
Bryan, R. R. '63/05
Budreau, M. A. '75/01
Cannon III, J. L. '66/01
Ciganek, G. '70/02
Day, R. J. '65/01
Dedrick, F. R. '66/02
Delaura, V. F. '69/01
Deyoe, H. B. '37/06
Forbriger, W. S. '46/06
Franconi Jr., A. M. '67/05
Hamborg, H. '36/01
Jenner, D. A. '68/01
Johnson, J. E. '59/06
Jones, J. N. '57/06
Lewis, W. R. '60/05
Lienesch, G. W. '41/07
Maxel, J. M. '57/06
Miller, K. C. '41/01
Mortimer, J. W. '65/01
Neumann, D. A. '70/01
Opp, K. L. '64/01
Remington, J. W. '39/03
Riegel, T. E. '68/03
Ruegamer, P. S. '76/01
Thomas, R. J. '71/01

TUFTS

Blanchard Jr., N. H. '50/01
Bolger, L. J. '40/08
Brickett, C. M. '57/06
Crites Jr., W. W. '48/01
Grieco, J. A. '53/01
Klitzke, M. R. '51/05
Moore, J. R. '47/06
Nickerson, T. A. '52/01
Palmer, J. F. '32/02
Parks, E. W. '47/05
Phillips, J. G. '40/01
Sarno, R. C. '64/03
Stevens, D. E. '49/06
Thompson, R. W. '59/06
Virginski, W. B. '61/06
Waghorne, A. C. '32/01

Ward, W. R. '36/03
Yorke, R. A. '64/01

TULANE

Allison, T. E. '71/05
Burkett Jr., W. J. '71/05
Krupsky, J. W. '68/06
Laclede Jr., R. P. '71/05
Paul Jr., W. T. '72/02
Reid, J. S. '68/04
Serold, R. W. '66/01
Snow Jr., E. C. '70/01
Szymurski, S. R. '68/01
Wilhelm, J. A., Dr. '62/02

U.N.C.C.

Simpson, E. B. '78/01
Washburn Jr., V. W. '78/01

WAGNER

Bishop, S. P. '63/03
Brockway, J. A. '63/01
Cranston, V. A. '52/06
Dietrich, S. W. '38/05
Johnson, W. E. '40/04
Lahart, J. H. '41/01
Metzger III, J. '58/06
Roper, D. L. '54/01
Russo, T. J. '47/06
Schoenlank, R. H. '49/03
Schroeder, M. O., Col. '39/04
Soriano, R. A. '61/04
Volpe Sr., W. A. '47/01

WAKE FOREST

Blanton, J. C. '42/02
Douloug, D. H. '76/01
Edahl, C. C. '77/01
Gray, P. J. '65/04
Gross, J. R. '53/02
Harrell Jr., V. H. '39/05
Hutchinson Jr., T. S. '68/02
Koether III, G. H. '68/06
Kornogay, H. R. '42/03
Kraus, G. P. '72/04
Matthews, T. L., Rev. '72/04
May, J. B. '76/02
Moran, D. F. '77/01
Pungder, D. S. '66/04
Shaw, M. D. '66/01
Small, L. C. '51/04
White, W. R. '54/04

WASHINGTON

Berg, R. L. '76/01
Burr, W. M. '23/07
Clark, R. W. '40/05
Coffee, G. '23/06
Courtney, C. E. '18/04
Damen, M. T. '76/01
Dawes, J. R. '35/02
Ditmars, I. D. '25/07
Dobson, J. W. '26/05
Ellerbeck, K. H. '30/01
Everett, E. L. '31/01
Erickson, A. J. '37/03
Everett, L. H. '70/03
Fisher, H. A. '38/01
Gardner, C. L. '26/02
Griffith, J. M. '28/03
Helgeson, A. L. '29/03
Hunter, R. T. '28/04
Johnston, R. G. '63/03
Kappel Jr., J. C. '58/04
Kennedy, M. R. '77/01
Landon, F. J. '35/04
Lange, G. H. '51/05
Loughary Jr., J. B. '20/02
Martin, D. E. '52/04
Martin, T. E. '51/03
Mazna, G. J. '20/01
McClarren, R. H. '25/07
Merrill, J. M. '34/05
Mitchell, G. L. '61/06
Moen Jr., G. O. '35/03
Morrison, L. P. '71/03
Nelson Jr., W. H., Col. '34/03
Ness, K. M. '36/04
Norman, T. E. '75/02
Parr, H. R. '68/01
Pool, J. T. '62/03
Rapier, D. R. '69/05
Reid, B. E. '77/01
Reid, G. D. '67/01

Rice, R. H. '42/03
Rogers, W. G. '16/05
Rudeen, C. W. '43/03
Rue, W. R. '24/06
Shively Jr., N. L. '75/01
Skog, D. R. '45/02
Sonntag, J. L., Capt. '68/01
Steinmann, D. H. '53/01
Still, M. D. '75/02
Stoner, W. L. '35/01
Strecker, R. B. '78/02
Strugar, G. R. '57/04
Turner, C. P. '26/05
Wasley, W. F. '64/07
Wood, W. R. '19/06
Woodworth, G. S. '26/01

WAYNE STATE

Axel, H. C. '46/03
Chance Jr., J. H. '40/06
Croci, A. R. '47/04
Dobson, R. C. '42/02
Flees, W. L. '67/06
Gaberson, H. A., Dr. '51/06
Gardner, C. W. '51/04
Heller, J. A. '42/04
King, D. F. '54/01
Kopka, D. F. '48/06
Langtry, E. R. '38/01
Lowe, C. E. '47/05
Mac Phee, W. D. '49/05
Orlans, J. H. '69/04
Plonka, F. E. '58/02
Salton, R. F. '43/01
Scott, T. M. '38/04
Smith, L. A. '41/03
Starr, R. G. '48/01
Stein, C. K. '41/01
Stevens, W. D. '56/03
Sweet, L. E. '51/01
Watt, W. D. '67/01

WEST VIRGINIA

Clower, J. I. '47/04
Devol, H. A. '31/02
King, E. D. '32/02
Leiphart, C. D. '31/05

WESTMINSTER

Anderson, D. A. '51/04
Anderson, G. '71/05
Boak, J. D. '49/01

Bosse, T. K. '70/03
Chew, R. L. '72/05
Christofferson, J. R. '52/01
Conner Jr., H. R. '48/05
Cullison, R. M. '46/06
Delo, G. L. '75/02
French, T. A., Dr. '39/02
Garvey, K. J. '75/02
Gittings, S. R. '77/02
Graven, E. R. '75/01
Hildebrand, C. H. '44/06
Jamison, W., Dr. '39/06
Johnston, R. L. '71/03
Kline, M. G. '77/01
Marsico, D. A. '55/01
McCullough, T. L. '57/05
Muchow, W. P. '64/06
Paine, F. V. '44/05
Pierson, L. R. '56/04
Preston, R. G. '56/02
Reznik, E. W. '48/04
Salzman, C. W. '74/01
Schaefer, R. J. '51/03
Scheid Jr., J. E., Dr. '42/06
Schneckenburger, D. K. '73/03
Sheehan Jr., R. M. '76/01
Shirey, L. W. '47/01
Smith, H. W. '63/01
Sternbergh, G. A. '48/05
Toporcer, L. H., Dr. '54/04
Vogel, C. E. '49/02
Wavle III, J. A. '77/01
Wilson, T. E. '49/03

WIDENER

Brekne, C. A. '74/01
Cioletti, L. A. '69/03
Conroy, F. P. '77/02
Cowardright, J. W. '64/01
Durney Jr., H. C. '69/03
Erisman Jr., C. A. '73/01
Evans, A. G. '62/02
Ganai, G. L. '63/01
MacFarland, J. W. '65/01
Moore Jr., W. L. '69/01

Rainey, R. G. '67/06
Ricci, V. B. '62/06
Sharbaugh, C. R. '67/01
Sheehan Jr., E. T. '68/01
Shervin, V. E. '75/01
Valent, T. F. '65/05
Wizniak, M. O. '66/01
Zeller, G. W. '62/01

WISCONSIN

Anderson, P. A. '18/04
Burke, K. R. '10/07
Dougherty, G. H. '30/02
Hilgendorf, H. '36/02
Madden, J. D. '19/02
Paustian, A. F. '26/01
Perrin, H. L. '18/06
Pinther, H. O., Col. '16/05
Ruhsam, E. H. '17/05
Sisson, H. M. '24/05
Stevens, C. E. '33/06
Sullivan, G. R. '29/04
Taube, K. D. '52/05
Yegen Jr., P. '17/06

W. V. WESLEYAN

Arnold, J. S. '36/06
Birrell, R. G. '34/02
Brown, C. W. '43/06
Chapman, V. R. '33/07
Cody, N. F. '33/04
Hymes, C. M. '47/05
Mellott, G. M. '33/05
Simpson, W. W. '41/06

YALE

Bass, G. E. '23/05
Beckwith, S. A. '15/08
Bracken, T. E. '25/03
Downey, K. G. '24/04
Frost III, R. '40/04
Holden, W. H. '15/02
Madison, W. N. '23/06
Murphy, A. K. '31/04
Samuelson, A. W. '43/03
Smith, D. G., Rev. '20/04
Sullivan, R. C. '35/06
Traub, H. J. '21/06
Withington, N. E. '26/06

THE TOMAHAWK

A publication of Alpha Sigma Phi Summer 1981

Postmaster: Change of address form No. 3579 should be sent to Alpha Sigma Phi, 24 West William Street, Delaware, Ohio 43015.

Address corrections: Please help us keep our addresses up to date if the man named on label is no longer in college and not at this address, please advise us. Please tell us about any spelling errors or other mistakes. When moving, notify Headquarters as far in advance as possible.