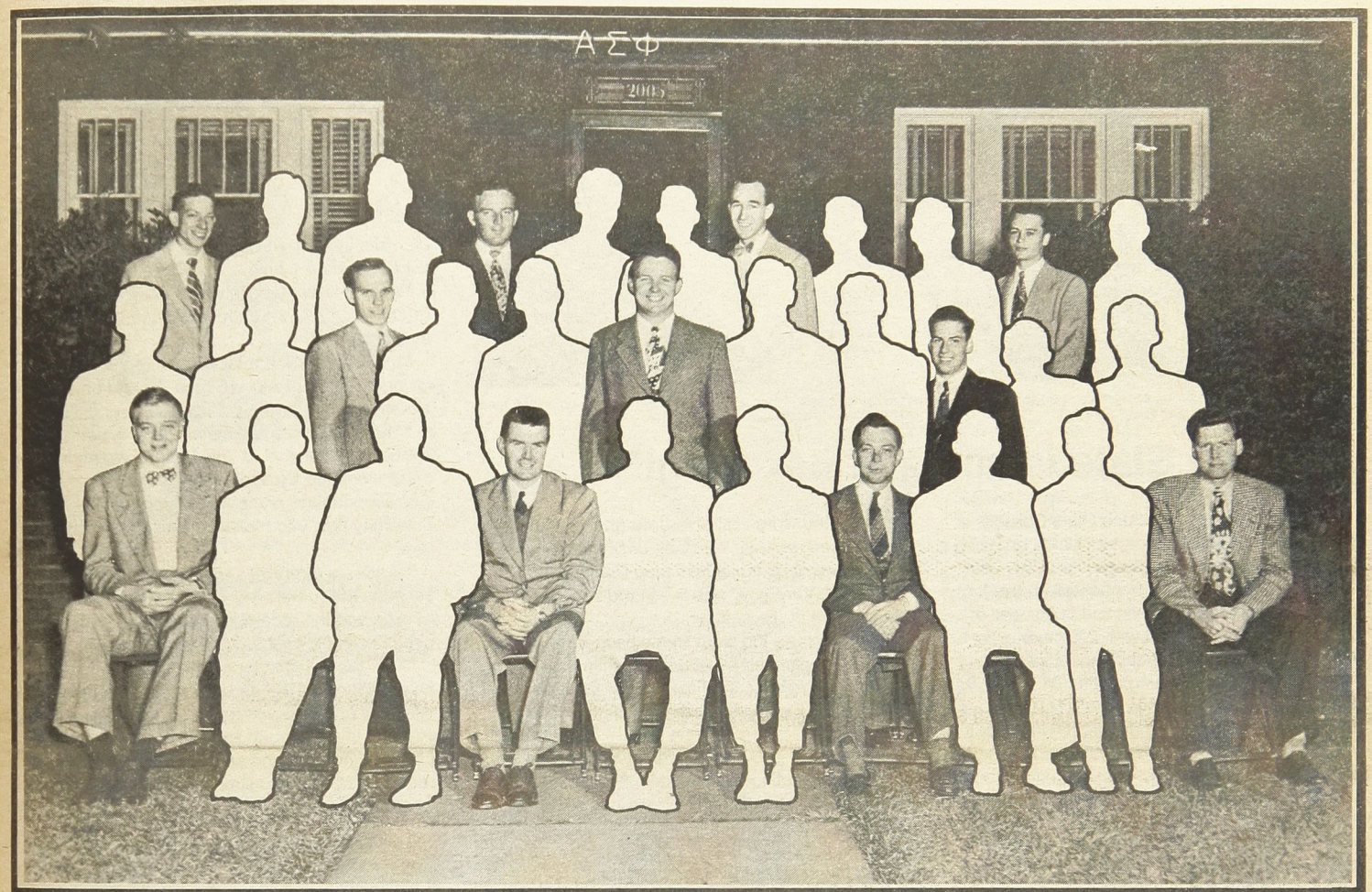


Fall, 1983



Fade in!

Previously “invisible” brothers start reappearing

For years a mysterious malady has struck the ranks of Alpha Sigma Phi members.

At graduation or soon thereafter, the ailment would strike. Two out of three Alpha Sigs would become “invisible”, fading from involvement and support of the Fraternity that had been an important part of their life and development.

The disappearing act has caused problems. It has meant an unfair burden for the one in three—they have had to shoulder a disproportionate share of the volunteer duties that keep Alpha Sigma Phi operating. Lack of financial support from those missing brothers has restricted the Fraternity's programs and growth opportunities.

But the one in three, while overburdened, has had an advantage: they've been having all the fun and gaining all the benefits of a continued participation in the brotherhood.

The word about the fun and the benefits must be getting out.

More and more brothers are rediscovering Alpha Sigma Phi. It is a trend that follows the growing numbers of undergraduates who are seeking out the fraternal experience. Did the campus growth spark the nascent trend of alumni return? It is difficult to ascribe. But throughout Alpha Sigma Phi the word is: “Welcome back!”

Here are some of the happy signs:

* Dramatic increases in the number of alumni attending chapter functions at Homecoming. Several chapters report attendance doubling or tripling expectations.

* Spontaneous reunions—brothers are organizing gatherings to renew friendships. A group of Wayne State brothers, for example,

recently met and delighted in seeing some faces for the first time in 25 years.

* Chapter alumni groups are growing. More are forming active alumni associations in addition to housing corporations. Zeta, Ohio State and Mu, University of Washington are just two examples.

(Continued on next page)

On the inside

To Better The Man: A Progress Report . . . that's the title of the annual report to the membership from Alpha Sigma Phi. It is a special 4-page section starting on **Page 9**.

A remarkable year—1933. And a special salute to the men who joined the ranks of Alpha Sigma Phi that year. Look for familiar names while you take a light-hearted history lesson. **Page 5.**

Victory and Defeat—Two major events, two chapters and two remarkable stories. Winning is great but the “losers” may have gained the most. **Pages 6 and 7.**

Upward—that's the pace of the annual loyalty fund. And an eight-page section tells the story. See how well your chapter members are supporting the “Old Gal”. Starts on **Page 13.**

The photo: For too many years, two out of three members of the Fraternity “disappeared” at graduation. Now many of these men are fading back in, regaining the benefits of brotherhood and helping shoulder the responsibilities of the Fraternity. The photo that illustrates the point—from the early 50's—is an unidentified group shot from old files. Can anyone provide background on the photo?



Bob Cabello of Stockton State, presents a special framed replica of the Delta chapter charter to the new Phi Gamma colony. Accepting are Tom Antonelli, left, and Bob Super.

Stockton State is home of new "Phi"

Phi Gamma colony at Stockton State College, Pomona, New Jersey has set its sights on being a record breaker from the first.

Formed last academic year as Beta Theta local, the group was officially colonized at the end of October with 23 men and with a number of its minimum requirements already accomplished.

Stockton State is a young institution not far from Atlantic City. The campus is noted for innovative educational programs and a fast-growing, close student body. The fraternity system is just starting to develop on the campus.

Working closely with the group has been Robert Cabello, Eastern Michigan '70, who was also affiliated with Theta, Michigan. Cabello is a dean at Stockton State.

With a successful fall rush and a detailed petition submitted to the Grand Council, the Stockton State group was granted its "Phi." Phi is the first

letter in the word Pharabios, life giving, and has been used recently in colony designations.

A group of young alumni from Gamma Xi, Widener University, who live in the area have been supportive of the colony.

Phi Gamma's big night was a banquet at a local restaurant planned by social chairman Art Cohen. Invocation was by Joe Fazio. Scott Crouse, vice president, "roasted" each member in turn as he introduced them. A capsule history of the group was given by Eric Kaplan, colony president.

Official greetings of Stockton State were delivered by Bob Cabello. He had a special gift from himself and the college: a beautifully framed copy of the Delta chapter charter. He had been given the copy of the historical document by Executive Secretary Emeritus Ralph Burns after he completed an internship at the National Headquarters in the 1970's.

There to officially install the group as a colony was Grand Junior President Evin C. Varner, Presbyterian '58. In his address, he complimented the colony on its achievements and assured them that though much work remains ahead, "the journey will be fantastic."

Varner presented the official colony certificate. And, with the help of Assistant Executive Director Jeffrey Schwind, called each member forward for his founder's certificate. The program concluded with remarks and benediction by Schwind.

The program concluded but the evening didn't. Phi Gamma members suddenly found themselves invaded by well-wishers from campus (including representatives of other Greek-letter groups) and a party ensued to celebrate. □

"Invisible" brothers returning to the fold

(Continued from Page 1)

Mu alumni are even staging golf tournaments and fielding softball teams.

* Alumni are getting involved in expansion. Efforts at UCLA and Stockton State were sparked by alumni.

* More brothers are taking part in the annual giving program of Alpha Sigma Phi and others are increasing their level of support.

* There has been a dramatic jump in news submitted by alumni to *The Tomahawk*. Address corrections are being volunteered.

Correspondence and calls concerning the Fraternity flow into Headquarters at a record rate.

* Products offered as non-income producing services to brothers—such as the new Fraternity necktie and the recently published membership directory—sold well beyond expectations.

* The gaps in chapter advisory positions are filling. (More are needed, however, and most chapters could benefit from additional specialized advisors in areas such as finances, rush, career planning, housing and service. These posts require less time investment than the Grand Chapter Advisor.)

In addition there have been efforts to establish informal alumni groups in various key cities. Fraternity-sponsored functions have drawn enthusiastic crowds.

Brothers who are interested in organizing a reunion of class years or starting a local alumni group are invited to contact Headquarters for address print-outs and how-to suggestions.

Starting to feel a bit less "invisible"? Good. Reach for the phone and call (614) 363-1911 for a warm "welcome back" greeting. And those men who have been having the fun and shouldering all the responsibility will welcome you, too.

Researchers predict that despite an on-going decline in college enrollments for the next decade, membership in Fraternities will increase. Hopefully more of the two out of three Alpha Sigs who have faded away will remember the fun, will remember their lifetime oath and Alpha Sigma Phi will have the manpower and the resources to make the most of the growth ahead. □

THE TOMAHAWK

An Educational Journal

Vol. 82, No. 2 (USPS 617-920)

Fall, 1983

Member, College Fraternity Editors Association

The Tomahawk is the oldest college fraternity publication. It first appeared in November 1847 at Yale College and continued until the college suspended it in 1852. Since its revival in April 1909, it has been published continuously.

Editor

Evin Varner

Managing Editor

Carol Hallenbeck

Circulation

Connie Robson

Business Manager

Robert M. Sheehan, Jr.

Alumni News

Tyler Cox

Chapter Reports

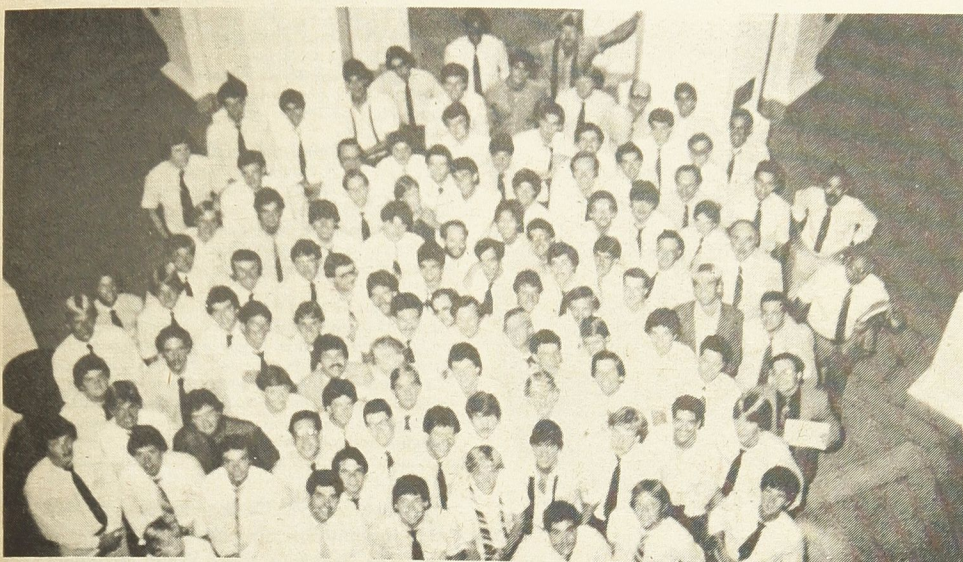
Eric Jacobson

The Tomahawk is published quarterly by the Ellwood City Ledger, Ellwood City, Pa. U.S.A. for Alpha Sigma Phi Fraternity. Fifty cents a copy. Life subscription \$30.00. All remittances should be made payable to Alpha Sigma Phi Fraternity, 24 West William Street, Delaware, Ohio 43015. Second class postage paid at Delaware, Ohio, and at additional mailing offices. Composition services by Compolith Graphics, Indianapolis, Indiana.

Postmaster: Change of address form No. 3579 should be sent to Alpha Sigma Phi, 24 West William Street, Delaware, Ohio 43015.

U. S. Postal Service, Statement of Ownership, Management and Circulation. Title of Publications: **THE TOMAHAWK** of Alpha Sigma Phi (USPS 617-920). Date of filing: 9/30/83. Frequency of Issue: Quarterly. Number of issues published annually: four. Annual subscription price: \$15.00. Location of known office of publication: 24 West William Street, Delaware, Ohio 43015. Location of the headquarters or general business offices of the publishers: Same as above. Publisher: Alpha Sigma Phi Fraternity, Inc., 24 West William Street, Delaware, Ohio 43015. Editor: Evin Varner, Route 1, Box 44, Pineville, NC 28134. Managing Editor: Robert M. Sheehan, Jr., 24 West William Street, Delaware, Ohio 43015. Owner: Alpha Sigma Phi Fraternity, Inc., 24 West William Street, Delaware, Ohio 43015. Known bondholders, mortgagees and other security holders: None. Extent and nature of circulation—average number of copies each issue during preceding 12 months and (actual number of copies of single issue published nearest to filing date): 33,066 (33,500). Paid circulation sales through dealers and carriers, street vendors and counter sales: 0 (0). Mail subscriptions: 30,805 (31,102). Total paid circulation: 30,805 (31,102). Free distribution by mail carrier or other means, samples, complimentary and other free copies: 1,698 (1,667). Total distribution: 32,503 (32,769). Copies not distributed: office use, left over, unaccounted, spoiled after printing: 563 (731). Returns from news agents: 0 (0). Total: 33,066 (33,500). I certify that the statements made by me above are correct and complete. **Robert M. Sheehan, Jr., Business Manager.**

Mike Slane, pledge of the Otterbein Colony, opened the National Educational Conference in dramatic fashion. The talented young actor recreated the famous "Old Gal" speech of the Fraternity's first Grand Senior President, Alfred Dewey Follet, Delta 1872. The speech was first presented in 1918.



Looking up—a sea of faces—the brothers at Educational Conference 1983 pause for the photographer.

Brothers gather to learn leadership, ideals

David M. Carney, Baldwin-Wallace '83, will—as most Alpha Sigs do—have vivid memories of his initiation as a brother in Alpha Sigma Phi.

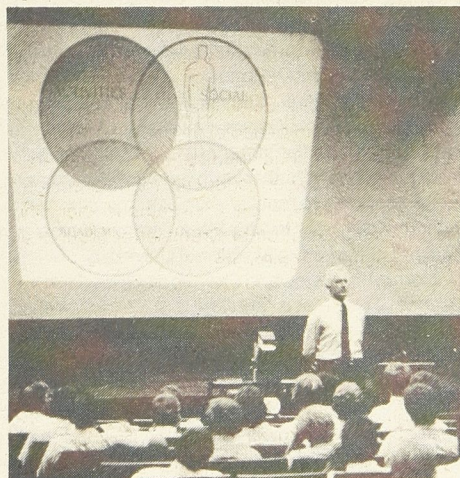
So will over 100 men representing Alpha Sig chapters from around the country. They took part in the ceremonies that made Carney a brother at the 1983 National Educational Conference (NEC) at The Ohio State University.

It was an appropriate highlight of the Memorial Fund-sponsored educational and leadership event. "Ideals Brought to Life" was the theme. And ritual work was a central focus, introducing the first

Time management tips for better scholarship and chapter operations was presented by **Jim McMahon**, Illinois Tech '78. McMahon is a graduate student at the University of Illinois, Champaign, and Grand Chapter Advisor for Eta chapter.

Developing responsible attitudes about alcohol was the topic of a workshop by Chapter Leadership Consultant **Tom Welsh**. **Tomahawk Editor Evin C. Varner** and Assistant Executive Director **Jeff Schwind** worked with delegates on chapter newsletters and communications.

Al Sternbergh, Westminster '48, New Wilmington, PA was there to assist with career development planning. Alumni relations and developing advisors was the subject for **Chris Koch**, Director of Alumni Development, **Dr. Robert Gill**, Radford University professor and advisor to Delta Theta chapter and **Robert M. Sheehan, Jr.**, Executive Director.



Dr. Ed King presents to undergraduates a stirring lecture on the need of ideals and of ritual in everyday life.

Omega chapter

John M. Coffee Sr., Washington '15, Delta Beta Xi '41, Townsend, MA. Also affiliated with Alpha, Yale. Member of Congress 1937-47. Served as member of Tacoma (WA) Civil Service Commission. Lawyer recognized as expert on labor, civil liberties and international affairs. He served Mu chapter as president.

(The *Tomahawk* does not assume responsibility or liability for the accuracy of Omega listings. Information, from various sources, is printed as it is reported to the National Headquarters for record keeping purposes.)

Gamma—Edward P. Ryan '28, Derry, NH. **Delta**—Ross Overton Decker '28, Ft. Gibson, OK. **Zeta**—John M. Barrows '28, Santa Barbara, CA; Melyer B. Casler '24, Birmingham, AL; Robert J. Lee '24, Venice, FL. **Mu**—Leland B. Foster '32, Seattle, WA. **Nu**—John Hyler Bree '24, Visalia, CA.

Omicron—A. Millard Taylor '19, Avalon, NJ.

Sigma—Sam Manly, III '26, Vero Beach, FL. **Phi**—Lindley M. Best '21, Visto, CA; Aaron Holland Groth '20; Auburn, AL; Lester Heckman '24, Cairo, NE. **Psi**—Michael A. Compton '23, McCall, ID. **Alpha Nu**—William E. Conrad '44, Allison Park, PA; Irving L. Mansell '39, New Wilmington, PA.

Alpha Xi—Jack E. Weidenmiller '44, Barrington, IL.

Alpha Omicron—Frank H. Sleeper '49,

Madison, MS. **Alpha Pi**—W. Reed Caldwell '58, Glenview, IL; E. Byrne Marhaeffer '52, Naples, FL.

Beta Tau—Donald M. Munro '38, Ann Arbor, MI.

Gamma Alpha—Thomas L. Stalter '51, Baltimore, MD. **Gamma Epsilon**—Edward S. Buckler, Jr. '30, Annapolis, MD. □

Grand Senior President **Stan Miller**, Purdue '64, Lafayette, IN chaired a special training session on "Rush with pride: quality and quantity."

Taking part in various discussion groups and Province planning sessions were Grand Province Chiefs: **Jim Hammond**, Washington '66, Seattle; **Kent Porter**, Missouri Valley '74, Kearney, MO; **Gordon Beeman**, Indiana '68, Ann Arbor, MI; **Chuck Vohs**, Penn State '75, Columbus, OH; **Larry Spees**, Ohio Wesleyan '57, Gallipolis, OH; and **Otto Sonder**, American '47, Oneonta, NY.

Members of the Grand Council, having completed their three-day summer meeting prior to NEC, took part in most sessions.

Zeta chapter, Ohio State, played host to NEC delegates for a barbecue, compliments of the Zeta Alumni Association. **David Leasure**, Ohio State '65, Zeta Alumni president, was there from Enon, Ohio to greet the delegates.

Delegates also found time to:

- Attend the Ohio State Fair.
- See "Fraternity is . . ." a film produced by the National Interfraternity Conference and shot primarily at Alpha Sigma Phi's Gamma Chi chapter, Indiana University. (The film is available to chapters through headquarters.)

• Applaud a rousing audio-visual presentation that recapped the 1983 NEC and gave a quick tour of Alpha Sigma Phi across America.

In between there was a lot of sharing of ideas and a special feeling of discovering that one has
(Continued on next page)

ALPHA
SIGMA
PHI

IDEALS
BROUGHT
TO LIFE!

updated edition of the Fraternity's rituals in several generations.

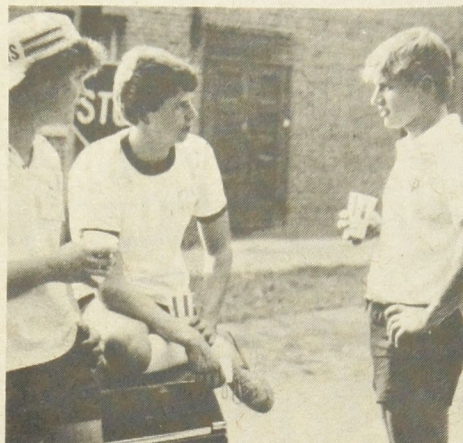
Delegates flocked around Dr. Edward King, Dean, Bradley University following his stirring presentation on the need for ideals and standards in life. King stressed the need to put the teachings of ritual into practice in everyday life, both within the chapter and for the individual.

Ideals were brought to life in practical ways with a series of workshops for the outstanding leaders chosen to represent Alpha Sig chapters:

Program planning by **Kevin Garvey**, Westminster '75, former Executive Director and now on the staff of Clarkson College, Potsdam, N.Y.

Financial planning by **Richard Gibbs**, Oklahoma '51, past Grand Senior President and now Director of Provinces. Gibbs and former First Lady Ann Gibbs were there from Tulsa.

Plan ahead—Announced at the 1983 National Educational Conference were sites for the next two national meetings of Alpha Sigma Phi. Convention '84 will be August 2-5 at the University of Illinois, Champaign. The 1985 National Educational Conference—dates to be finalized—will be at Penn State University, State College, PA. Plan now on being at both.



Left photo—David Carney, initiated at the 1983 National Educational Conference, is congratulated by Grand Council member Ed Hamburger at a cookout held at the Zeta chapter house. Right photo—The Alpha Nu, Westminster College, delegation compares notes about conference sessions. Left to right, Mike Fenno, Tom Davis and Jim Joye.

Awards highlight educational conference

(Continued from preceding page)

special brothers with similar aspirations on a lot of campuses.

NEC is underwritten by contributions to the Memorial Fund, the tax-exempt educational foundation of Alpha Sigma Phi. □

Delegates to the 1983 National Educational Conference were busy indeed. And one of the things that kept them busy was creating skits that were a highlight of the final NEC banquet.

The good humor and imagination of each Province group was enjoyed by a large audience that included many Columbus, Ohio area alumni.

"Ideals brought to life"—the conference theme—was the title of a slide presentation that showed dramatically how Alpha Sigs are putting ideals into practice. Famous faces flashed on the screen. And so did examples of chapter achievements and undergraduate determination "to better the man."

Colleen Alberts, 1983 National Alpha Sig Sweetheart was there to meet the men who had selected her. Fraternity songs filled the air that night, but none so enthusiastically as the one greeting the outstanding Widener University co-ed.

Awards announced and presented at the banquet included scholarships and grants recognizing and supporting outstanding academic work. Those included:

Scholar of the Year—**Lee Zalud**, Bethany College; Friends of Alpha Gamma Award (science)—**Jim Caruso**, University of Illinois; Friends of Rho Award (liberal arts)—**Nikolaos Zachariadis**, Slippery Rock University. Grants-in-aid went to **Paul Olesh**, Indiana University and **Doug Wenzel**, Iowa State University. The scholarships, like the conference itself, are underwritten by alumni annual giving.

The Frank F. Hargear Award to the undergraduate who best exemplifies the ideals and purposes of Alpha Sigma Phi went to **Roland Spickermann, California '82**.

What was memorable about the 1983 NEC? Here is a sampling of the responses of some of the delegates:

"I learned of many ways to improve my chapter."

"The most helpful parts were the seminar on building a great program and the presentation Rush With Pride. Also, being able to discuss your chapter's problems with other brothers and get solutions. Dr. King's talk was a real inspiration."

"Workshops were the most helpful. They all seemed to be well organized."

"Rush, knowledge of rituals, meeting brothers in my Province."

"The seminars and seeing the proper ideas and ways to present the ritual."

"Meeting men with one common interest from across the country."

"Getting ideas from other brothers."

"The demonstration of the ritual showed the proper way which was great."

"Dr. King's speech and the initiation ceremony."

"I found the workshops and Province meetings most useful. The Headquarters staff was excellent. The Saturday Banquet was great."

"The budget seminar was extremely helpful. So was the rush seminar. The whole NEC was a highlight."

"Actually watching the rituals as they are supposed to be done."

Judges in an unprecedented move recommended that recognition go to four chapter newsletters. **Evin C. Varner**, editor of The Tomahawk, cited increased quality of chapter publications and the larger number of chapters issuing newsletters thanks to a new Headquarters program as the reason.

First place went to *The Black Lantern*, Bethany. Second place, a tie: *Notissima*, University of California, Berkeley and *The Sig-O-Gram*, Rio Grande. Third Place: *The Iota Sig*, Cornell University.

The Tomahawk award was presented to **Gamma Alpha** chapter, Ohio Northern University for its excellent copy and photography submissions. Two special Tomahawk awards were announced that evening, recognizing outstanding volunteer service by two alumni: **Eric Jacobson, Michigan '74** and **J. Tyler Cox, Wake Forest '75**.

Installed at the banquet were presidents for

It was a bit like producing an entire season of summer stock theater in four days.

A hard-working ritual team seemed to be constantly rehearsing or presenting exemplifications of all Alpha Sigma Phi ceremonies before an appreciative audience of NEC delegates.

The team included Bob Pratt, Illinois Tech; Rich Mansfield, Andy Whiteley and Jeff Pedigo, Lehigh; John Morrison, Francis Marion; Tom Walter, Toledo; Randy Laipply, Rio Grande; Tom Davis, Westminster; Mike Sierra, Ohio Northern; and Steve Amend, Penn State. Others assisted in various ceremonies. The ritual work was under the direction of and commentary by Grand Junior President Evin Varner.

Total new services introduced included: senior service, memorial service, wedding service, birth/adoption service and milestone service. A new installation of officers was presented along with a revised chapter opening ceremony.

The new ritual manuals presented to delegates to take back to their chapters provide detailed instructions and background information plus diagrams on the actual initiation ceremony which remains basically unchanged.

regional Provinces. Taking their oath of office were: **Roland Spickermann**, University of California, Berkeley; **Mitch Weinbeck**, Iowa State; **Paul Olesh**, Indiana University; **Geoff Connell**, University of Michigan; **Earl Jones**, Bowling Green State University; **Jim Joye**, Westminster College; **Ian Karr**, Tulane University; **Jonathan Chaet**, American University and **Steve Amend**, Penn State.

Ralph Burns, Executive Secretary Emeritus, was there to give the benediction. □

In military, industry brother breaks record

Chester J. Stanaro, California '47, Saratoga, CA, spent 26 1/2 years in the Marines. He got things done.

Today he is Industrial Relations Manager for Rudolph & Sletten, Inc., Mountain View, CA—a major construction firm. He's getting things done.

"There is much in common in construction work with what I did in the Marine Corps," Brother Stanaro explains. "Particularly in the field where we muster forces, men and equipment to do hazardous work, rapidly and expertly."

He has become expert in a lot of areas. The first he tackled for Rudolph & Sletten was safety. His



program works. The firm recently put in 707,000 manhours without a lost time injury!

With a firm that has tripled in size in the last three years, he has put together an industrial relations program that is admired in the industry. "R&S is able to build well and fast, uninterrupted by avoidable misunderstandings," he reports.

Another major area surprised Stanaro. He started with "an idea for a safety paper" and it has grown into a full company newspaper that Stanaro edits. A Legion of Merit Medal holder, Stanaro speaks of the Marines with pride. And about his business as well, a firm he describes as "another outfit that won't settle for being second best." □

1933: problemed America, perservering Alpha Sigma Phi

Gas sold at 18.5¢ per gallon.

"She Done Him Wrong," a film starring Mae West, was packing movie houses across the country. Construction began on the Golden Gate bridge in San Francisco. The 21st Amendment to the Constitution—repealing prohibition—was ratified. Hem lines were long—not over 12" from the ground, even for daytime wear.

It was 1933—the year that the brothers listed here were initiated into the Mystic Circle of Alpha Sigma Phi. The Fraternity salutes these brothers from 47 chapters with the special Golden Anniversary Award.

These brothers deserve our salute. It was a difficult time and their leadership helped keep Alpha Sigma Phi going despite falling enrollments and financial crisis.

The New Deal. That was 1933. It was the abyss of the Great Depression. Franklin D. Roosevelt would be inaugurated that year. And he would launch the N.R.A.—National Recovery Administration.

Roosevelt ordered all banks closed. His banking reform measures were enacted by Congress and signed into law in one day, March 9, 1933: a peace time legislative record.

There were clouds overseas. Hitler was installed as Chancellor of the Reich. Japanese troops extended their occupation of Manchuria. And a pro-communist government in Spain disestablished the Catholic Church.



1933 was the year that Franklin D. Roosevelt was first inaugurated.

Despite it all, Alpha Sigs rallied to The "Old Gal." A sampling:

Delta, Marietta was home to the captains of the crew, football, track, and basketball teams plus the student body president and vice president. **Zeta's** silver anniversary brought back 102 Alpha Sigs.

Eta alumnus **C. William Cleworth** sponsored a special newsletter to the 3,000 pre-1924 initiates who were not **Tomahawk** subscribers. At **Eta**, alumni gathered for its silver anniversary. **Dallas Donnon** was recognized for traveling from Seattle for the event.

Theta claimed Michigan's football, tennis and track captains. **Iota** redid its card room and landscaped the Rockledge grounds. **Mu** alum **Phillip G. Johnson** was named president of Boeing. **Johnny Hutchinson** was signed by the St. Louis Browns. At **Nu**, **Arthur Harris** was sophomore president and HSP **Jack Hood** chaired the big Rally Committee.

Upsilon was led by HSP **Charles W. Shaeffer** who was VP of the Penn State student body. **Phi** won the N.Y. Alumni Council award for scholarship. **Psi's** **Ed Lewis** was leading Oregon State basketball to division titles. **Alpha Zeta**, UCLA, saw an Olympic bronze medal winner on **George Jefferson**. He was elected track team captain. At **Alpha Theta**, Missouri, **William Nelson** was elected VP of the Law School Student Association.

Special congratulations to the following brothers. If there are errors or omissions in the list, please advise Headquarters.

ALABAMA: Edwin L. Bernhart, River Edge, NJ; Varley H. Grantham Jr., Orlando, FL; William R. Lewis, Sylacauga, AL; Ward R. Williamson, Jamaica, NY.

BETHANY: Wellman Wilson Dietz, Massillon, OH; Raymond L. Henthorne, St. Louis, MO; Blair E. Saxman, Mechanicsburg, PA; Frank M. Zingel, Pittsburgh, PA.

CALIFORNIA: Joseph E. Gallison, Turlock, CA; Arthur F. Harris Jr., Berkeley, CA; George E. Ising, Livermore, CA.

U.C.L.A.: Charles A. Carlton, North Hollywood, CA; Frank H. Charters, Inglewood, CA; Donald S. Johnson, Carlsbad, CA; Herbert L. Mitchell, Pasadena, CA; Kenneth A. Oliver, Seattle, WA.

CENTRE: Allen B. Edwards, Saegertown, PA; Samuel R. Nicholson, Louisville, KY; Frank Robards Whitman, Danville, KY; Samuel Burke Williams, Shepherdsville, KY; Russell M. Wood, Westfield, MA.

CHICAGO: Edward J. Novak, Milwaukee, WI; Mason Tolman, Slingerlands, NY.

COLORADO: Everett K. Cartpenter, Phoenix, AZ; Ivan E. Houk Jr., Walla Walla, WA; William A. Matthews, Burbank, CA; B. M. Stewart, Okemos, MI; Aubrey M. Threlkeld, Harwich, MA.

COLUMBIA: Allyn A. Lathrop, Columbus, OH; Edward O. MacDonald, St. Croix, VI; Donald G. MacIver, Chilmark, MA.

CORNELL: William A. Buescher Jr., Tucson, AZ; Kenneth M. Lork, Naples, NY; Charles J. Mayard, Lake George, NY; Thomas F. Newman, South Yarmouth, MA; Robert B. Nichols, Norwalk, CT; Robert M. Silliman, Silver Spring, MD; Claude R. Snyder Jr., Elmira, NY; Jack E. Tyng, North Palm Beach, FL.

DARTMOUTH: Fay Allen Jr., Port St. Lucie, FL; Edward F. McGrath, Milton, MA; Kenneth Webster, Randolph, VT.

ILLINOIS: Charles W. Bennis, Lincoln, IL; Horace P. Christian, Oak Park, IL; Wayne F. Meents, Ashkum, IL; Carl F. Smith, Ft. Myers, FL; Harold M. Stambach, Silver City, NM.

IOWA: Neil L. Maurer, Laurens, IA; Grover H. Schneckloth, Davenport, IA.

IOWA STATE: Ralph W. Anderson, Grundy Center, IA; Bruce C. Bundy, Coralville, IA; Edgar F. Jeffries, Fort Dodge, IA; E. C. Sanford, Pleasant Hill, CA; Everett D. Witte, Burlington, IA.

(Continued on page 8)



1933 saw Mae West as a top movie box office attraction.



Newspaper recounts the news for Founders' Day 1933—December 6.

A group of brothers have been involved in a special campaign to raise funds to help underwrite the considerable cost of the new edition of the Ritual of Alpha Sigma Phi that has been issued. It is the first to be produced in over 30 years. Almost 100 brothers have contributed to this much-needed publication. If you'd like to take part, send your check—marked "Ritual"—to Alpha Sigma Phi, 24 W. William St., Delaware, Ohio 43015.

The thrill of victory!

It's called Grand Prix. And it has become a major annual event at Purdue University. It started as a fun race of karts powered by lawnmower engines in 1958 with speeds occasionally as high as 30 MPH.

Today's Grand Prix is the jewel in a week of activities that includes fashion shows, golf and tennis tourneys, a runner's marathon and a carnival. The karts are now carefully engineered precision machines that routinely hit 60 MPH in the 50 mile race that draws a crowd of over 20,000.

And the 1983 winner was **John Shumaker** of Alpha Sigma Phi.

Grand Prix at **Alpha Pi** of Alpha Sigma Phi is a year-round activity. And in one way or another the entire chapter gets involved. Particularly so this year with **Doug Fischer** on the Grand Prix Senior Board and with **Mike Ney** and **Lyle Bates** serving as trackworkers.

The crew—four men plus the driver—put much of the spring, especially the break period, into the effort. Practice runs are followed by qualifications and then the grind of the race itself. That's just 1 hour and 7 minutes to wrap up hundreds of hours of building the kart, engineering the motor, finding a sponsor, planning strategy and practice, practice, practice.

For John Shumaker the victory was particularly sweet. He has been very active at Alpha Pi, serving as scholarship chairman, social chairman and vice president plus attending national Fraternity meetings. John wanted the win for Alpha Sigma Phi.

And he wanted it for his brother **Bill Shumaker**, Purdue '78, Indianapolis. Bill drove for Alpha Sigma Phi from 1979-81. And to make it even more of a family affair, the Alpha Pi kart was sponsored by Shumaker Brothers Industries, Inc., Indianapolis, a firm headed by John and Bill's father. (Shumaker brother Dan has followed in Bill and John's steps, joining Alpha Pi in 1982.)

John, who drove last year, also took a trophy for leading 117 of the 160 laps.

Bill was there for the race. And he'd been there through the spring, helping out. Over 50 Alpha Pi alumni came back to cheer the chapter's team.

"The reaction of the chapter has been tremendous," reports John. "It lifted everyone's spirits. I'd say it's created one of the most positive

attitudes that any event ever has for the chapter. It's given everyone something else to be proud of."

Congratulatory messages have poured into Alpha Pi's house from alumni. Hardly were the parties over and the money counted from the gate (it goes for scholarships) before a group of Alpha Pi men were huddled. It was time to plan for 1984. It was time to once again put that special brand of Alpha Pi unity and drive and determination to work. □

The Shumaker Saga was the second time Alpha Sigma Phi has taken the laurels in the Purdue Grand Prix.

The first time was in 1964 and the driver was Robert A. Booty, Purdue '61.



Booty

Booty is now a design engineer with Mercury Marine Division of Brunswick Corp., Oshkosh, Wisconsin. Booty feels he learned a lot working on the Grand Prix that has helped in his profession, "Especially team coordination and attention to detail."

8000 people saw Booty's win that took just under three hours. He was one of only 25 of 41 starters to finish that year.

The chapter allocated about \$125 and Booty got an uncle to donate another \$100 for special parts that went into the modification the team carried out on the engine for speed, power and durability. (Today's two-stroke engines are considerably more sophisticated and expensive.)

Today Booty still "tinkers with engines." Except now they are in a 1953 Cessna 170B and sophisticated audio systems that he builds and develops.



John Shumaker rides the shoulders of fans as the 1983 Purdue Grand Prix winner. He drinks the traditional mug of milk and savors the victory. For Alpha Sigma Phi, it was a high point after coming close time and again in recent years. This was John's second run. His brother **Bill** had driven for Alpha Sigma Phi for three years. The winning kart was co-sponsored by Alpha Sigma Phi and the firm headed by John's father. 20,000 cheered the Alpha Pi victory.

Booty remembers: "Late in the race it started sprinkling. We were in the lead and would have won if it had been called. But I remember not wanting it that way. The rain held off and we won with the whole 100 laps—the *right* way. Felt good!"

Almost 20 years later a young John Shumaker was quoted in a newspaper as saying winning the race felt "really good." □



Robert Booty, holding his trophy as Alpha Sigma Phi's first Grand Prix winner, is interviewed. Gathered in front, left to right, **Dave Kutter**, **Dick Dolson** and **Andy Serafin**. Not in the photo is the fourth crew member, **Willie Charnetzky**. Perched

on Serafin's knee is the Grand Prix Queen. Robert Booty today is an engineer for Mercury Marine and spends his free time either fixing or flying his own plane.

The agony of defeat!

A popular movie called "Breaking Away" shared Indiana University's Little 500 bicycle race with the world.

The event is called the "World's Great College Weekend." Over 26,000 attend. **Eric Born**, vice president of **Gamma Chi** chapter of Alpha Sigma Phi, headed the Alpha Sig team in this year's race.

The event is important enough that a daily paper in Richmond, IN sent a reporter to follow hometown favorite Born's activities. Writer Dale Perry tells the story like this:

Born, like racers on most of the other 32 teams of finalists, had trained all winter in anticipation of it. A three-sport letterman through his years at Hagerstown High School and similarly active in college, he already was in good shape, but like other racers, Born had begun biking on stationary rollers while there still was ice on Bloomington streets. When spring break came, the Alpha Sigs drove to Daytona Beach for daily 60-mile workouts.

They were relative newcomers to Fraternity Row, with only 15 years of history and even less a past in The Race, never having placed higher than eighth. "We don't have the tradition that some teams do," Born said. They didn't expect to win. But they planned to try like hell.

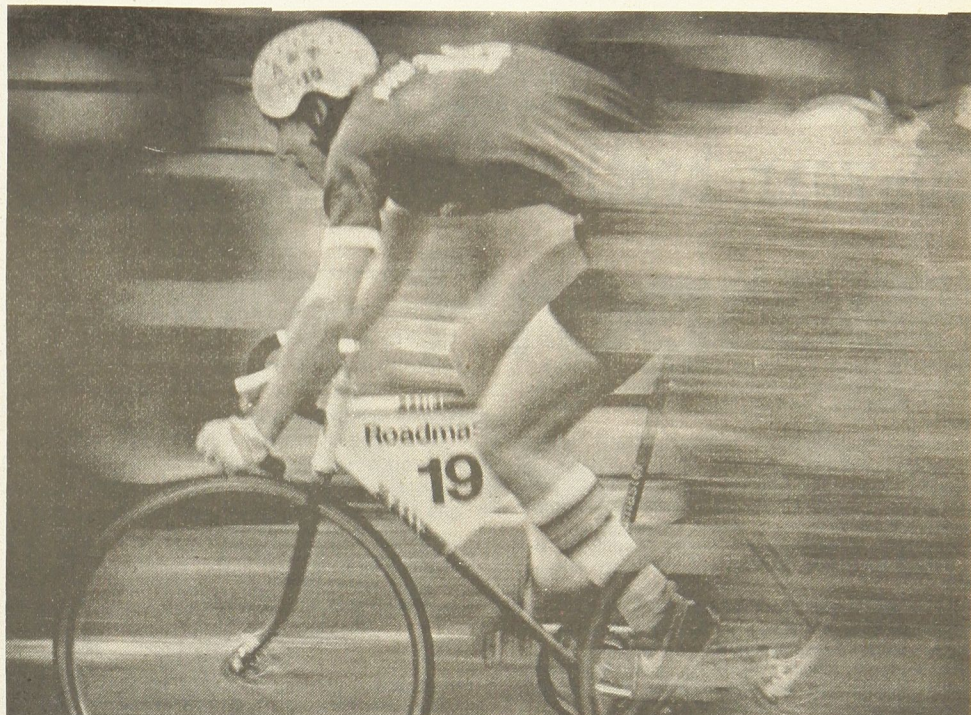
"The key," Born said, "is to never lose the pack. Then, in lap 199, have your best sprinter on the bike." Simple. But not really. In the 50 miles of racing, at speeds of 25 to 30 miles per hour, in a pack of 33 glory-hungry riders, where wheels are turning at nearly 130 rpms, and winning is divine, things will get messy. It's what the bikers fear worst and what the crowd wants most.

"It's exciting at the start and the finish," Born said. "In between, everybody's waiting for the wrecks."

There will be plenty of action for the crowd this day. Five yellow flags. Eric Born will be involved in two of them—he'll claim they "took enough years off my life"—but he'll ride out unhurt.

He will be the Alpha Sigs' primary rider, swooshing Team No. 19's bike around the treacherous Turn No. 3 and churning it down the front straightaway, with pedals whirling and spokes spinning, as waves of oral boosterism ripple through the congested stadium.

He will be on the bike when the checkered flag is waved. But he will be two laps behind the winner. Alpha Sigma Phi will not even place in the



Eric Born becomes a blur as he hurls around the Little 500 track for Alpha Sigma Phi. Alpha Sig team members Jeff Anderson, left, Kurt Terhar and Glenn Barb show their disappointment in the pit when the race didn't go their way. There's always next year. (Photos by Wade Thrall, Palladium-Item, Richmond, IND.)



top 10 teams. Born will be disappointed. "We didn't expect to win," he'll say, "but we expected to place a little better."

He will cough up the black powder he has swallowed following other bikers on the packed track—"cinder cough," he'll call it—and he will lick at his lips which have been sliced by the flying

In the news: A reporter for a daily newspaper in Iowa decided to find out about rush. So he signed up at Iowa State. He was surprised to find no animal houses, no rich boy palaces and no booze in addition to no hazing. "As rush progresses, you gravitate toward houses you like. I had an especially jovial time with the men of Alpha Sigma Phi." The article featured a big photo of the reporter in front of Phi chapter. A reporter after visiting Gamma Chi chapter, Indiana University shared in a letter: "They were a particularly hospitable group."

particles. Though post-500 parties already will be breaking out up and down Fraternity Row, Eric Born will feel generally rotten.

It will take just five words from a Fraternity brother to change things. They will be just the right words, spoken on the run, with a slap on the back. "Hey, Eric, you were tough." □

Golden Anniversary salute to 50-year brothers of Fraternity

(Continued from page 5)

KENTUCKY: Marvin A. Chapman, Bella Vista, AR; Robert C. McDowell, Bath, OH; James E. Scholl, Fairfax, VA.

LEHIGH: Richard M. Wilson, Huntsville, AL.

MARIETTA: Clarence A. Britton, Charleston, WV; Paul B. Harman, Coldspring, TX; Ned R. Hickel, Baton Rouge, LA; John T. McBurney, Post Falls, ID; C. B. Mincks Jr., Everett, WA.

MARSHALL: Robert G. Bunch, Madison, WV.

MASSACHUSETTS: John L. Bailey, Orleans, MA; Raphael F. Costello, Franklin, MA; Raymond Di Marzio, Portland, ME; Herbert W. Ferguson, Pittsfield, MA; Howard L. Hinckley Jr., Milton, MA; Robert A. Keefe, Milford, CT; Alexander A. Lucey, Medford, MA; Charles W. Marsh, Sarasota, FL; Royal K. Tanner, Greenfield, MA; Charles S. Woodbury, Salem, NH.

M.I.T.: Wilfred D. MacDonnell, Bloomfield Hills, MI.

MICHIGAN: George N. Hall, Ann Arbor, MI; Thomas K. Jefferis, Grosse Pointe Shores, MI; John W. Miller, Owensboro, KY; William A. McClintie, Detroit, MI; Robert J. Renner, Youngstown, OH; William Renner, Bronxville, NY; Robert B. Thornley, East Harwich, MA.

MIDDLEBURY: Anthony J. Costaldo, Glen Oaks, NY; Maxwell H. Kennedy, West Palm Beach, FL; Donald J. MacDougall, Sherborn, MA; Robert M. Smith, North Berwick, ME.

MISSOURI: John W. Wilds, New Orleans, LA.

MOUNT UNION: Eugene R. Benedetto, Alliance, OH; Robert O. Ferner, El Cajon, CA; Richard M. Goldrick, St. Paul, MN; Dwight L. Saltzgiver, Alliance, OH; William E. Thacker, Lansing, MI.

NEBRASKA: Gilbert L. Koza, Clarkson, NE; George H. Murphy, Sacramento, CA.

NEW HAMPSHIRE: Eric W. Andberg, Vienna, VA; Ernado J. DeVittori, Rochester, NH; Salvatore Grasso, Milford, NH; Ralph W. Morang, Quincy, FL; Donald C. Robbe, Nashua, NH; James Peter Romeo, Weymouth, MA; Raymond Smith, Montpelier, VT.

N.J.I.T.: Richard J. Amberg, Englewood, CO; S. C. Greidanus, Morristown, NJ; John E. Hanle, Hinsdale, IL; Paul W. Nordt Jr., Caldwell, NJ.

N. C. STATE: Needham B. Dozier, Rocky Mount, NC; Thomas B. Gardiner, Fairfax, VA; Charles H. Garner, Virginia Beach, VA; Charles D. Norlander, Brevard, NC; Herbert F. Schoof, Savannah, GA; Frederick W. Sutherland, Wayne, NJ; Frederick G. Walsh, Fargo, ND.

N. Y. POLYTECHNIC: Donald T. Arundel, Southbury, CT; Donald J. Edmunds, Fairfield, CT; Albert L. Emilian, Florham Park, NJ; Raymond G. Hegel, Sun City, AZ; Fred Heinzelman Jr., Clifton, NJ; James W. Humble, Cherry Hill, NJ; William Lawler, Mt. Lebanon, PA; John F. McCarthy, Bronx, NY; George McIntosh, Napa, CA; Joseph A. Meagher, Wantagh, NY; John M. Zeier, Princeton, NJ.

OHIO STATE: Samuel Busich, Mt. Clemens, MI; Thomas F. Forrest, Mansfield, OH; Harry S. Gump Jr., Ft. Meyers, FL; Julius A. Neill, Sandusky, OH; James E. Pipoly, Youngstown, OH; C. W. Schwiesow, Ripon, WI.

OHIO WESLEYAN: Douglas A. Blackburn, Los Angeles, CA; Courtland L. Gridley, Walden, NY; Roy Homans, Brunswick, GA; Earl M. Lovell, Lakeland, FL; Edward F. Morse, Orlando, FL; F. A. Norwood, Glenview, IL.

OKLAHOMA: Edgar E. Bartlett, Tulsa, OK; R. L. Ellis, Hominy, OK; J. L. McGee, Norman, OK.

OREGON STATE: Wallace E. Carson, Portland, OR; Warren O. Gibson, Kanohe, HI; C. W. Medley, Bend, OR.

PENN STATE: Sinclair A. Adam, West Chester, PA; William J. Bright, Palm Beach Gardens, FL; Paul L. Brogan Jr., Ocean City, NJ; Thomas W. Eaglesham, Mishawaka, IN; John W. Feeney, Harrisburg, PA; Jack R. Frost, Denver, CO; Robert W. Hance, Fresno, CA; Joseph H. Laroche, Reading, PA; Joseph F. McAmbley, Warren, PA; J. M. Patton, Wilmington, DE; Edward Jones Poehel, Plainsville, PA; William A. Rodgers, Sarasota, FL; Richard Scotlar Troxel, Albiontown, PA; J. H. Whisler, Walnut Creek, CA.

Special thanks for help in preparing this story on 1933 to Grand Historian Robert W. Kutz, California '67. The typeface used in the headlines is P.T. Barum, a face very similar to type styles popular in newspapers in 1933.

Each brother named receives a special Gold Anniversary certificate engrossed to mark their 50 years in the Mystic Circle. Should any brother listed not receive his certificate, Headquarters should be advised. Also advise of any errors or omissions.

PENN: William S. Bishop, Boca Raton, FL; Dallas E. Threnhauser, Pittsburg, PA; Lewis D. Trédick, Woodbury, NJ.

PRESBYTERIAN: Joseph Paul Todd, Atlanta, GA.

RUTGERS: G. William Asay, Levittown, PA; William O. Collins Jr., Wilbraham, MA; John C. Deschu, Bound Brook, NJ; Aaron L. Leonard, Scotch Plains, NJ; Joseph G. Marino, New Brunswick, NJ; William Henry Meister, Beach Haven, NJ; Richard F. Newcomb, South Yarmouth, MA; William Schmidt Jr., Washington, DC; William A. Teichman, New Brunswick, NJ; Gene A. V. Zirpolo, Rahway, NJ.

ST. JOHN'S: John Reeves Blakistone, Naples, FL; Herbert Eccleston, Naples, FL; Charles J. Kibler, Alexandria Bay, NY.

STANFORD: Leslie M. Barnes, San Jose, CA; Donald P. Cady, Susanville, CA; Everett H. Claiborne, Oakland, CA; William R. Conlin, Sacramento, CA; James A. Copp III, Los Angeles, CA; Thomas K. Hitch, Honolulu, HI; Edward V. Mills, San Francisco, CA; Lyman Tondro, El Centro, CA; Benjamin S. True, Milwaukee, WI.

STEVENS TECH: Edward M. Szita, San Diego, CA; Gennaro A. Vacca, Colonial Beach, VA; Lawrence H. Zahn, Summit, NJ.

SYRACUSE: John J. DeYoung, Clifton, NJ; Edward Jontos, Troy, NY; Donald S. McLearn, Hingham, MA.

TUFTS: Roger Drury Griffin, Beverly, MA; Kenneth D. Hay, Manawa, WI; John J. McGonagle, Cresskill, NJ; Alexander A. D. Paolero, Watertown, MA; Edward J. Rokean, Hyannis, MA.

WAGNER: Mark E. Benethum, Shippensburg, PA; Albert C. Corbin, Staten Island, NY; Lee Y. Davidheiser, Staten Island, NY; Arthur V. Verardi, Staten Island, NY; Frank C. Walter Jr., Staten Island, NY.

WAKE FOREST: Martin T. Greenwood, Kittrell, NC.

WEST VIRGINIA: Charles E. Cunningham Jr., Charleston, WV; William E. Gifford, Morgantown, WV; Eugene J. Hester, Clairton, PA; Warren W. Mankin, Grand Lake, CO.

W. VA. WESLYAN: Arnett Baughman, Philippi, WV; E. St. Clair Bentfield, Wheeling, WV; Chester F. Casto, South Charleston, WV; Clarence A. Casto, Largo, FL; V. Russell Chapman, Richland WA; Nicholas F. Cody, Charleston, WV; Charles E. Coleman, Bideford, ME; Thomas Victor Cuppett, Grafton, WV; James Wadsworth Furbee, Clarksburg, WV; Joseph Patrick Hall, Buckhannon, WV; Allen T. Hamner, Buckhannon, WV; Robert Addison Layfield, Buckhannon, WV; Eskridge H. McCourt, Webster Springs, WV; Jackson William Rafeld, Alliance, OH; Roy W. Reger, Phoenix, AZ; Archie A. Snyder, Jane Lew, WV; Kenneth S. Stewart, Pine Bluff, AR; Robert J. Stickney, Erwinna, PA; Earl E. Strohmeier, Ceredo, WV; Vernon Butler Thomas, Old Lyme, CT; Edmond Dennis Tucker, Nutter Fort, WV.

WISCONSIN: C. Edward Stevens, Milwaukee, WI.

YALE: Fayette Brown Jr., Sewickley, PA; C. A. Howard Jr., Attleboro, MA; Paul B. Sawyer Jr., Rochester, NY; John R. Sheehan Jr., Northampton, MA; Henry R. Stern, Oyster Bay, NY; John Train Jr., Savannah, GA; U. E. Walden, Hillsdale, NY.



William K. Warnock, right, at entrance to Koret of North America, with colleague Thaddeus N. Taube. Brother Warnock continues to consult to Levi Strauss following his retirement.

Garment business leader recalls his days at Nu

William K. Warnock, California '40, is considered one of the deans of the American garment business. So when his retirement was announced, Levi Strauss & Co. was quick to point out that Warnock would continue consulting for the firm.

Warnock's remarkable career has centered around one firm, Koret of North America. He joined Koret as a production trainee in 1945. In 1959 he became vice president-production. Warnock took on merchandising responsibilities in 1964 and in 1968 became president of the woman's apparel group.

In 1975 he became Koret's president and chief operating officer. The firm became part of Levi Strauss in 1979. He continued to head Koret and became a corporate vice president of Strauss.

Brother Warnock recalls a lot about his days at Nu of Alpha Sigma Phi. "I was most fortunate to be associated with a great group of men who understood the importance of the proper balance between social and academic. We also learned a lot about the chemistry of interpersonal relationships.

"Although my roommate and I probably won the championship for the most untidy room we also learned a bit about discipline."

Warnock lists a group of outstanding men at Nu during his era: **Jack Smith '37**, (Omega) vice president of Pacific Gas & Electric; **James W. Halley '40**, (Omega) key figure in California law circles and Republican politics; **Weldon Richards '38**, architect; **Wallace Meyer '40**, banking; **Robert Meckel '40**, medicine and **William C. Cramer '46**, business and engineering.

Brother Warnock and his wife Guin now live in Kentfield, CA. He recalls: "Some of our fondest memories go back to the days when as a married couple we served as 'chaperones' at Alpha Sig dances both prior to the war and after the war (I served in the Army Air Force as a GI) when many of our buddies returned to school and I had started my business career." □



TO BETTER THE MAN

A Progress Report

Illustration: Judy Ferrell

We live in a world dominated by bureaucracies and bracing for a high-tech revolution.

Abureaucracy tends to do things no individual in it would do if acting alone.

High technology raises serious ethical problems for society: about the tradeoff as automation on a massive scale rapidly renders skilled workers obsolete; about the danger to personal privacy when computers can quickly compile every bit of information held in widespread data banks; about the limits of genetic research and the medical responsibility for human life.

The times demand a heightened sense of ethical responsibility. Today's man must be aware of the ethical implications of his work and actions.

Technical wizards who are ethical ignoramuses are among the most dangerous of Earth's creatures.

To *Better The Man* is the title of the member's manual that goes to each new man in Alpha Sigma Phi. It is also, simply stated, the purpose of Alpha Sigma Phi. And the goal. It is a way of summing up the Fraternity's objectives to provide for its members that sense of ethical responsibility.

The value system upon which Alpha Sigma Phi was founded in 1845 is very much valid today. In its early days, Alpha

Sigma Phi was not alone in presenting ideals to young men. The job was shared by the community, family, religion and university. Today, when that sense of ethical responsibility is needed most, it is sad to note that it may be only within Alpha Sigma Phi that many young men primarily confront questions about standards, ideals and values to any large degree.

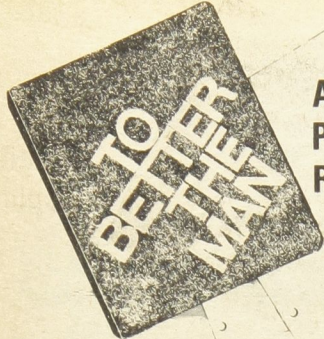
Alpha Sigma Phi is a business and a brotherhood.

This special report outlines its stewardship of the funds made available to the Fraternity to carry out its work.

But more importantly, it is a progress report . . . an update on Alpha Sigma Phi's efforts to assist in bettering the man and its aspirations to provide that sense of ethical responsibility our nation needs more today than any time in the Fraternity's 138-year history.

This is a report that invites a response. You. Your support and your involvement. Further progress requires the participation of many more. It is a hopeful, joyful, rewarding and worthwhile journey for everyone involved. Read on. And then react. Become part of a band of brothers intent on excellence.

1982-83 Annual Report
Alpha Sigma Phi Fraternity



A Progress Report

The Business

Finance and Resource Management

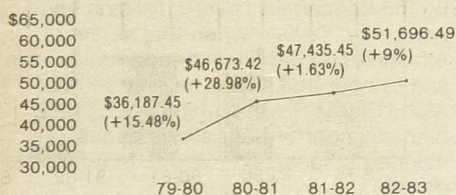
Alpha Sigma Phi is dedicated to providing a quality experience for every member.

Undergraduates affirmed the value of that experience at Convention '82 when they imposed on themselves a fees increase of 36%. The undergraduates spoke out for additional service and program help. They spoke for excellence for Alpha Sigma Phi.

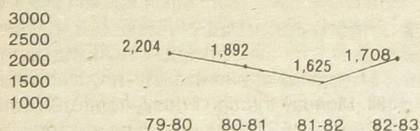
Providing the excellence of service and the expanding support that undergraduates deserve, providing continuing fraternal opportunities for all members and sustaining the growth of the Fraternity will require more income. No fraternity in the country operates merely on initiation fees—in fact, for most fraternities, those fees are a small part of operating capital.

"Every quality fraternity in America realizes that

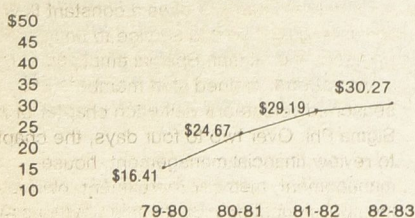
Loyalty Fund (Gross)



Number of donors



Average gift



the future depends on creating a substantial endowment plus a growing annual support program by its alumni," says Grand Senior President Stan N. Miller.

The financial picture is an encouraging one. (Any brother who would like a detailed budget may write to Headquarters.)

Alpha Sigma Phi is gaining more alumni support.

Alpha Sigma Phi is creating its first endowment to assure excellence and to assure the future. Alpha Sigma Phi is operating with remarkable efficiency and effectiveness.

With all brothers working together, resources for excellence are being found and will continue to grow.

Alumni Giving

Critical to the operation and growth of Alpha Sigma Phi is the Annual Loyalty Fund. A detailed report and list of donors to the 1982-83 campaign appears in this issue.

The news is good.

In last year's annual report, it was stated that a major increase would be needed to buy the same amount of services for chapters as income from the 80-81 campaign bought. Happily, alumni during 82-83 increased their giving by 9%. Hopefully that indicates a growing support that will mean much to the Fraternity. The increase is one that has encouraged volunteers, staff and chapters as all redouble efforts to take Alpha Sigma Phi to new levels.

Also encouraging is an increase in number of donors to 1,708. The challenge is to match and exceed the 79-80 number of brothers contributing: 2,204. Another positive increase was the average gift size—from \$29.19 to \$30.27.

The Brotherhood

Expansion

During 1982-83, Alpha Sigma Phi re-activated its chapter at the University of Illinois. The new Eta has made remarkable progress. The chapter's scholarship rating is one of the highest on campus. Outstanding men are being attracted to the chapter.

A colony at Otterbein College, Westerville, Ohio is adding to its strength. This is a pioneer effort, with Alpha Sigma Phi seeking to become the first national fraternity on a campus with an old and well-established local system

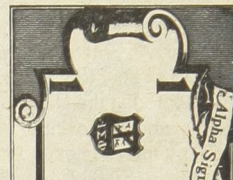
Operating under the guidance of the expansion program is Alpha Mu, Baldwin-Wallace, which is in a rebuilding phase.

Thanks to efforts by alumni, colonies are being formed at UCLA (home of Alpha Sigma Phi's Alpha Zeta chapter) and at Stockton State, Pomona, New Jersey. Work has also taken place at Western New England College where a brother recently transferred.

Considerable expansion opportunities exist that lack of funding has prevented. Continued alumni giving and support such as the UCLA effort are key to on-going growth.

Projected Finances, 1983-84

Income



Initiation fees: 31%



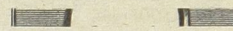
Alumni contributions: 24%



Pledge fees: 11%



Undergraduate dues: 22%

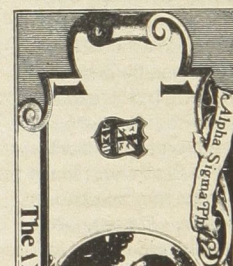


Investment fund: 4%



Miscellaneous: 8%

Expenses



Chapter services: 45%



Administrative: 27%



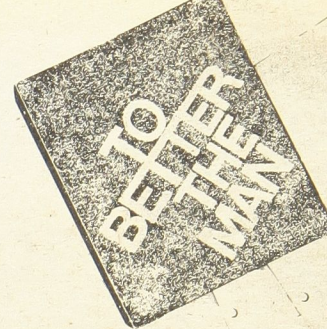
Office supplies: 14%



Tomahawk: 10%



Other: 4%



A Progress Report

Manpower

During 1982-83 there were 759 pledges to Alpha Sigma Phi and 672 men initiated into the Mystic Circle.

Early reports indicate an exciting growth in those figures for the upcoming year. An outstanding rush manual has been provided to all chapters. Special workshops have been presented at the National Educational Conference, at various Province Conclaves and, of course, by traveling staff. Bill Siering, a Toledo undergraduate brother, has created an effective recruitment presentation that has been given by him as a volunteer to benefit 8 chapters. The results have been outstanding.

Involved alumni and advisors are needed for day-to-day support of chapters. Where those are lacking, chapter size often threatens quality of operation and the assurance of continuation. The Fraternity needs more on-the-scene helpers. This is particularly true as enrollments continue to decline as they will into the 1990's.

Programs

Alpha Sigma Phi is a Fraternity rich in tradition.

One tradition is attitude about scholarship, rooted to the Fraternity's beginning as a literary society. Reports flow in of chapter after chapter installing libraries, hooking up computer terminals, mandating strict quiet hours and instituting study tables and tutor plans.

Across the nation, states are legislating higher drinking ages. The movement affirms Alpha Sigma Phi's long-standing program to encourage discussion about alcohol consumption and to provide alternative beverages at all social functions. The Fraternity works closely with chapters as they adjust to changing local laws and regulations.

Chapters have been responding enthusiastically to the new edition of Alpha Sigma Phi rituals. More and more chapters are reviving or starting ceremonies such as the Black Lantern Processional. More chapters are raising funds to refurbish and restock their ritual equipment.

Year after year, chapters show delightful innovation in campus and community service projects. Thousands of dollars and thousands of hours go to worthwhile causes across the country. Most chapters undertake at least two such projects each year. (See "Caring & Sharing"—Summer '83 issue of *The Tomahawk*.)

Chapters are responding to Alpha Sigma Phi's policy of positive pre-initiation programs with educational programs that are producing better trained and increasingly enthusiastic undergraduate brothers. Headquarters assists each chapter that wishes to revamp and update its pledge education program.

Chapter Standards

In 1976, undergraduates at Convention mandated a formalized set of Minimum Standards of Operation

for chapters. Those minimums reflect the high expectations that Alpha Sigma Phi has always had for its membership.

The Grand Council monitors chapter performance against those standards and where necessary acts to suspend or close chapters who fail or are unwilling to measure up.

Gamma Alpha chapter, Ohio Northern University and Gamma Delta chapter, Davis & Elkins, previously under suspension, have responded with positive growth and development. The Grand Council, in working with these chapters, has applauded their efforts.

Gamma Pi chapter, Findlay College, is under suspension currently due to low membership.

During 1982-83, Alpha Sigma Phi closed Tau chapter, Stanford University and Gamma Upsilon chapter, Eastern Michigan University. Tau had been under suspension for ritual abuse of membership selection provisions of the Constitution. Gamma Upsilon, despite efforts by staff, had been unable to build membership to levels allowing a quality program on its campus.

Publications

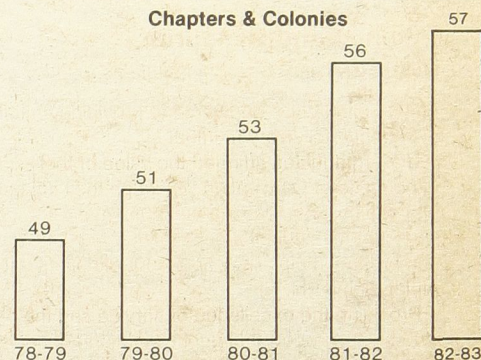
New during 1982-83 was an edition of the Rituals and Secret Work of Alpha Sigma Phi. The edition—distributed to chapters at the National Educational Conference—is greatly expanded over the previous, 30-year-old publication. New diagrams and instructional material have been added to make it easier for chapters to produce meaningful ceremonies.

The Tomahawk, the quarterly national publication of the Fraternity, currently goes to all members for whom the Fraternity has a correct address. (A great many fraternities distribute their publication only to current donors.) This has been made possible by increased alumni giving of the Annual Loyalty Fund and by special printing rates made available to the Fraternity. The printing assistance comes from William C. Kegel, Westminister '48 and Ryan Kegel, Baldwin-Wallace '74 Ellwood City, Pa.

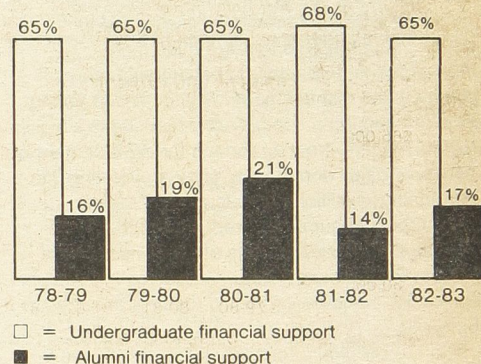
During the year *The Tomahawk* was honored by a first place and two honorable mentions in the national College Fraternity Editors Association (CFEA) competition. CFEA is made up of fraternities, sororities and professional Greek-letter groups. The competition is judged by working professionals in business, industry and association communications. *The Tomahawk* took awards in all three categories open to it. The honorable mentions are awarded by judges only when they choose to recognize outstanding work. Earlier *The Tomahawk* received an award from the National Interfraternity Foundation for an article judged as one of the best of the year in fraternal journalism.

Undergraduate response grows to *The Old Gal Gazette*, a special newsletter published every two weeks during the academic year. The publication is strongly "how-to" with emphasis on the various program areas of the Fraternity.

Chapters & Colonies



Undergraduate support vs alumni support



Fraternity Headquarters

National headquarters of Alpha Sigma Phi Fraternity is a 7-room office building at 24 West William Street, Delaware, Ohio 43015. It always seems to be bursting at its seams with activity.

Thousands of phone calls. (Any member may call, Monday through Friday, from 8:30 a.m. to 5:00 p.m. (EST) with questions or information and an amazingly large number of them do just that.) Many thousands of letters and mailings. Printing. Maintaining membership and address records for more than 44,000 men who have been initiated into Alpha Sigma Phi. (Brothers frequently call or write, tracking down friends.)

From Headquarters goes a constant flow of counsel, guidance and service to undergraduates, chapters and alumni. Special emphasis is given to:

Visitations. Trained staff members and seasoned volunteers visit each chapter of Alpha Sigma Phi. Over two to four days, the chapter gets to review financial management, house management, member recruitment, pledge and member education, scholarship development, ritual

(Continued on next page)



Annual Progress Report

A personal note to the 1982-83 Annual Report from Grand Senior President Stan Miller

Elsewhere in this issue is a list of hundreds of loyal Alpha Sigs who have given of themselves to make sure someone is available to our undergraduate brothers to assist, educate or motivate . . . to offer advice when needed.

But I wish every brother who contributed could visit a chapter to see the return on their investment. (And I wish every brother who hasn't yet contributed could also visit with a chapter. I think they'd then reach for their checkbook!)

It's exciting.

Alpha Sigma Phi is one of the best leadership training courses anywhere. The chapter is a unique environment that necessitates group cooperation, self-control, rules of order and procedure and self-government. The chapter also offers something increasingly rare for today's young men: an environment for character building.

It's working.

Our chapters are asking for assistance in developing programs that are even more challenging — especially in scholarship, career planning and management training. These young men are sharing a special spirit that seeks a higher road. They are creating forums for development of personal ideals and values. They are delving into our history, traditions, rituals and principles.

I'm proud of our undergraduate brothers, our chapters, our headquarters staff, our programs.

Please let me know your reaction to this report. Please let me know of your questions about your Fraternity.

We are building a foundation for excellence for Alpha Sigma Phi. It deserves your support. My thanks to the ever-growing number of you who are stepping forward and moving Alpha Sigma Phi forward to the future.

Fraternally yours,

Stan N. Miller, Purdue '64
Grand Senior President 1982-84



(Continued from preceding page)

presentation and officer training. Special workshops are prepared as needed to benefit individual chapter needs. Additional staff is needed in this vital area.

Advisors. Headquarters works to find, recruit and train chapter advisors. Special materials and mailings are prepared to assist advisors. Almost every chapter could benefit from additional advisory support . . . to provide continuity and day-to-day guidance. Alumni are urged to volunteer for this rewarding involvement that provides a remarkable return on comparatively little time investment.

Province and National Meetings. Again in 1983, the trend toward record attendance at the Fraternity's national meeting continued. The 1983 National Educational Conference at The Ohio State University provided an outstanding leadership and character development experience for undergraduates from across the country.

Regional meetings. Province Conclaves continued to grow in importance. The Fraternity has been bringing its regional directors — Grand Province Chiefs — to the annual national meeting for a special training course. Conclaves provide undergraduates with an opportunity for sharing the brotherhood, sharing ideas and gaining new organizational skills. Professionally developed programs for the regional meetings are producing excellent results throughout the country.

Scholarship. Dr. Dennis R. Parks, Baldwin-Wallace '72 is the Fraternity's new volunteer Director of Scholarship. Has has written a new manual that is designed to help individual members work toward better academic performance. A chapter scholarship program manual is being prepared. Brother Parks heads Capital University's Cleveland (Ohio) Center.

Career Development. Undergraduates are asking for further support in learning how to go about career planning. A unique program, directed to sophomore members in the chapters, has been developed and will be implemented shortly. It will provide an early start for young Alpha Sigs as they search for guidance in life planning decisions. The program is under volunteer Director of Career Development, G. Alan Sternbergh, Westminster '48. Brother Sternbergh has gained national recognition for the career planning programs he directs at Westminster College.

Alumni development. Alpha Sigma Phi is for life and the need for brotherhood never ends. The Fraternity needs more and more active alumni organizations — chapter corporations, chapter associations and city or regional councils. (There is always a direct correlation between a strong alumni group and a strong chapter.) Headquarters and the Grand Council has been devoting more time to this concern. Special events have been held in various cities to seek alumni group formation. Materials have been prepared for guidance of those who would like to volunteer their efforts to start groups.

Newsletters. To keep alumni better informed about their chapters, Headquarters works with chapters to issue at least two newsletters each

year. The Fraternity provides chapters with a low cost program of guidance, assistance, production and mailing. There has been a dramatic increase in the number of chapter newsletters and the quality of the publications.

Experience files. To assist chapters, Headquarters produces a series of manuals and guides. But an important program supplements those standard publications. Headquarters constantly compiles information on every topic, every question, every aspect of chapter need. The files reflect the work of professionals in academia and the business world and also the best ideas from all chapters. A wealth of experience is thus made available to any chapter on request.

CHAPTER STATISTICS 1982-83

Chapter	82-83 Pledges	82-83 Initiates	Chapter Membership	Initiates To Date
American	13	10	26	487
Atlantic Christian	12	12	17	331
Baldwin-Wallace	2	—	10	752
Bethany	5	12	37	578
Bowling Green	8	7	33	363
California	20	18	44	766
U.C.L.A.	7	—	14	483
Charleston	—	—	10	452
Concord	—	—	21	200
Cornell	18	17	68	1103
Davis & Elkins	11	9	22	672
East Carolina	26	20	36	73
Findlay	3	4	11	180
Francis Marion	8	3	19	27
Hartwick	14	21	45	615
Illinois	11	43	41	1383
Illinois Tech	9	5	23	706
Indiana	25	21	76	372
Iowa State	17	12	50	645
Lawrence Tech	14	17	19	142
Lehigh	16	14	56	566
Longwood	16	9	35	45
Loyola	—	15	33	281
Lycorning	19	16	46	257
Marietta	12	19	51	1408
Marshall	12	13	30	575
Miami	17	16	26	103
Michigan	7	9	17	908
Missouri	19	17	35	343
Missouri Valley	8	9	30	552
N.J.I.T.	12	12	36	395
U.N.C.C.	7	8	11	32
N.C.State	11	9	21	196
Northern Michigan	—	—	13	165
Ohio Northern	20	12	47	689
Ohio State	8	8	17	729
Oklahoma	9	5	14	810
Oregon State	25	15	57	894
Otterbein	8	—	14	—
Penn State	21	20	62	1250
Presbyterian	16	3	25	484
Purdue	39	33	125	1002
Radford	12	10	36	59
R.P.I.	14	15	49	546
Rio Grande	12	11	41	200
Rutgers	28	24	54	792
Slippery Rock	—	3	16	110
Stevens Tech	—	—	44	505
Stockton	13	—	17	—
Toledo	16	21	65	894
Tri.State	4	3	21	962
Tulane	18	11	20	236
Wagner	22	—	28	644
Wake Forest	20	3	57	526
Washington	25	25	91	1497
Westminster	22	28	88	1145
Widener	23	25	55	466

(Figures as of end of 82-83 academic year. Based on reports submitted to Headquarters for pledging and initiations.)

Annual alumni giving for 1982-83 sets a new upward pace

Alpha Sig alumni broke records this year for the Annual Loyalty Fund.

The annual giving program by brothers hit new peaks in total dollars and average size of gift. The total number of brothers giving is up, too, reversing a recent declining trend.

The **Annual Loyalty Fund** represented this past year 17% of the Fraternity's income. Every check is a brother giving of himself to make sure that Alpha Sigma Phi is reaching out.

The Founders Club

Akre, Charles T. Iowa '28/11	Kegel, William C. Westminster '48/08
Anderson, Stuart W. Eastern Michigan '73/10	Kegel, W. Ryan Baldwin-Wallace '74/05
Baetz, George G. Cincinnati '37/12	Krebs, Frank J. Mt. Union '29/25
Beeghly, Charles M. Ohio Wesleyan '27/13	Kutz, Robert W. California '67/45
Best, Elbridge J. California '13/12	Miller, Stan N. Purdue '64/11
Black, Louis R. Illinois '27/10	Mosiman, Floyd W. Stanford '17/20
Bunch, Robert G. Marshall '33/15	Mueller, Harald C. Illinois Tech '39/16
Cleworth, C. William Illinois '14/10	Richardson, George S. Colorado '17/09
Coffey, Ralph California '17/10	Robertson, Oscar L. Colorado '18/20
Commons, John P. Colorado '18/06	Romig, Gerald C. Penn State '23/12
Corbett, Bradford C. Wagner '58/02	Sandercox, Robert A. Bethany '51/10
Cupp, Paul J. Penn '21/09	Sanders, Richard S. Missouri Valley '62/08
Day, Ambrose Columbia '20/07	Schultz Jr., Niels Stanford '35/12
Franks, Melvin E. Illinois '34/10	Shaeffer, Charles W. Penn State '30/06
Gallagher, Edward S. Lehigh '34/12	Sheen, Robert T. Lehigh '30/04
Gibbs, Richard R. Oklahoma '51/12	Showerman, John B. Northern Michigan '69/10
Glos, Raymond E. Illinois '22/14	Trubow, George B. Michigan '53/15
Hadsell, Norman W. Ohio Wesleyan '52/09	Turner, Fred W. Ohio Wesleyan '20/10
Hanna, Warren L. Minnesota '18/09	Wadsworth, T. P. California '17/40
Haseltine, Charles DeB. California '27/15	Walker, Robert D. Oklahoma '50/08
Hayes, Emmet B. Stanford '31/09	Wehner Jr., John M. Penn '43/01
Hiberly, Warde C. Washington '18/09	Williams, Eugene S. California '24/14
Hilstrom, Hollis R. Iowa State '31/12	Wise, Alfred B. Baldwin-Wallace '43/08

As the **Annual Loyalty Fund** grows, so grows Alpha Sigma Phi. Every additional dollar (all tax-deductible by the way) contributed frees up other income for expansion, scholarship development, leadership development programs, career development services and publications such as *The Tomahawk*.

A total of 1,708 brothers made contributions to the annual giving program. The average gift was \$30.27 for a total gross of \$51,696.49.

The average gift and the gross are new records. The total number of brothers giving is a very exciting sign. For the past two years the number of brothers taking part in this vital program had declined from a peak of 2,204 in 1979-80. This year is the time to match that peak and exceed it!

Don't wait to be asked. Write your check today. Make it out to the Alpha Sigma Phi Memorial Fund. And because it is tax-deductible, make it a healthy figure. (Because of rising postage costs, all brothers aren't getting special mailings on behalf of the Annual Loyalty Fund. The Fraternity would rather use that postage money to continue sending every brother *The Tomahawk*. Most fraternities send their publication only to those brothers who contribute annually.)

On the following pages are listed—with special thanks—the names of those brothers who are helping keep Alpha Sigma Phi great. (On most of the pages you'll find photos of the recent National Educational Conference, an outstanding leadership training experience for our undergraduate brothers made possible in part by your contributions.)

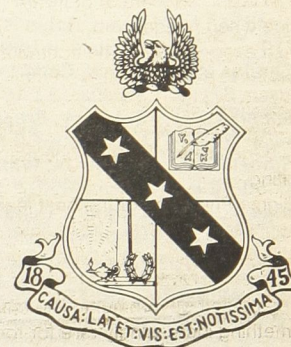
The special clubs

The **Annual Loyalty Fund** recognizes brothers at several giving levels. **The Founders** are those who have given a one time or cumulative gift of \$1000 or more. **Anniversary Club** members are those brothers who give annually \$137 or more—a dollar a year for each year of the Fraternity's age. (It'll be \$138 this time!)

Phoenix Club members are those who gave \$50-136. And the Honor Roll salutes those who contribute up to \$50. Brothers are asked to inform Headquarters of any errors or omissions in any of the listings. The number following year or initiation is the number of times a brother has contributed to the program.

A new, special recognition

Grand Councilor **James Fitzpatrick, Illinois Tech '47**, Palm Beach, FL has been spearheading the effort to create a new group of brothers who provide needed support for Alpha Sigma Phi. (Continued on next page)



"The cause is hidden, the results well known," is the open motto that appears below the Fraternity's crest and coat of arms. Loyal alumni brothers are the cause and the results are growing more encouraging, year by year, in the annual giving program that supports Alpha Sigma Phi.

Here's my '83-84 Annual Loyalty Fund Contribution!

Alpha Sigma Phi Fraternity
24 West William Street
Delaware, Ohio 43015

Here is my tax-deductible gift, made out to the Alpha Sigma Phi Memorial Fund. I want to invest in excellence for Alpha Sigma Phi.

- ☐ Pinnacle Club—\$250 (\$500 for charter membership)
- ☐ Anniversary Club—\$138
- ☐ Phoenix Club—\$137-\$50
- ☐ Honor Roll—\$25
- ☐ Other _____

Name _____

Chapter _____

Home Address _____

Phone _____

City _____

State _____ Zip _____

Occupation and work address _____

Phone _____

(With your contribution, be sure to send news about yourself for *The Tomahawk*.)

Ring. Beta Psi, Hensseler Polytechnic, is proud of Alpha Sigma Phi. So they arranged with the phone company for a special number: A-S-I-G-P-H-I or 274-4744. They report success with "dry rush": "Interaction between brothers and prospects worked. We took time to get to know them as people, not just another face at a party. The drinking age shouldn't change this—this should be every chapter's philosophy!" reports Beta Psi's **Mark Boileau**.



Anniversary Club breaks record in '82-83

- Akre, Charles T.**
Iowa '28/11
- Anderson, Gary A.**
Westminster '71/09
- Baetz, George G.**
Cincinnati '37/12
- Baldwin, David M.**
Ohio '30/10
- Beeghly, Charles M.**
Ohio Wesleyan '27/13
- Beeghly, Robert T.**
Ohio Wesleyan '31/01
- Bergman, Robert S.**
Illinois Tech '53/12
- Best, Elbridge J.**
California '13/12
- Bischof, Laurence F.**
Kentucky '18/06
- Black, Louis R.**
Illinois '27/10
- Breedlove, Alan M.**
Penn State '77/02
- Bryan, Robin R.**
Tri-State '63/08
- Bunch, Robert G.**
Marshall '33/15
- Burns, W. Bruce**
Ohio State '63/08
- Burton Jr., Wm. D.**
Tulane '67/07
- Calaway, Cullen P.**
Ohio State '19/13

- Campbell Jr., L. R.**
Penn '47/10
- Chapman, Marvin A.**
Michigan '33/13
- Christy, R. Neil**
Marietta '38/09
- Cleworth, C. William**
Illinois '14/10
- Coccia, Michel A.**
Illinois Tech '42/07
- Coffey, Ralph**
California '17/10
- Commons, John P.**
Colorado '18/06
- Conlon, Thomas L.**
Michigan '25/10
- Cornell, Thomas B.**
Michigan State '56/09
- Cox, Kenneth A.**
Purdue '72/04
- Craft, James E.**
Penn '48/05
- Cupp, Paul J.**
Penn '21/09
- Curry, Tommy G.**
Missouri Valley '60/08
- Davis, Timm W.**
Iowa State '79/03
- Delamater, R. W.**
Penn '26/06
- Dexter, Richard A.**
Oregon State '60/10
- Doane, John F.**
Illinois '36/10
- Dumont, William P.**
Ohio State '16/09
- Eaton, W. Kenneth**
Penn '19/09
- Egler, Dan L.**
Indiana '67/01
- Faulkner, Frederick L.**
Illinois Tech '43/09
- Fijak Jr., Theodore**
Illinois Tech '58/11
- Fontana Jr., Roland D.**
California '27/13
- France, Richard W.**
American '69/02
- Franks, Melvin E.**
Illinois '34/10
- Gallagher, Edward S.**
Lehigh '34/12
- Gallagher, Richard H.**
Illinois '55/10
- Gibbs, Richard R.**
Oklahoma '51/12
- Glos, Donald F.**
Illinois '21/11
- Glos, Raymond E.**
Illinois '22/14
- Gromiller, James W.**
Penn State '51/08
- Grossman, Robert A.**
Ohio State '67/09
- Hadsell, Norman W.**
Ohio Wesleyan '52/09
- Hall, Wilfred M.**
Colorado '15/13
- Hallett, Robert J.**
Purdue '64/01
- Hancock, Roy F.**
Penn State '29/09
- Hanson, Donald R.**
Stanford '53/09
- Hart, George R.**
Westminster '43/09
- Haseltine, Charles DeB.**
California '27/15
- Hilstrom, Hollis R.**
Iowa State '31/12
- Howsam, Robert L.**
Colorado '38/10
- Hoyt, John R.**
U.C.L.A. '29/08
- Johnson, John**
Tufts '60/01
- Kegel, William C.**
Westminster '48/08
- Kegel, W. Ryan**
Baldwin-Wallace '74/05
- Kelsey, Roland J.**
Illinois '38/10
- Kerney, Robert W.**
Illinois Tech '40/06
- Kishman, George H.**
Baldwin-Wallace '43/08
- Kornegay, Horace**
Wake Forest '42/07
- Krebs, Frank J.**
Mt. Union '29/25
- Krejci, William G.**
Purdue '67/09
- Kutz, Robert W.**
California '67/45
- Labahn, Alfred H.**
Illinois '44/03
- Leasure, David E.**
Ohio State '65/01
- Leindecker, John P.**
Michigan State '58/07
- Lieullen, Russell O.**
Oregon State '58/08
- Lilly, John H.**
Purdue '68/01
- Lundgren, John C.**
Colorado '30/11
- Magoffin, Beriah**
Kentucky '38/49
- Mansell, Thomas V.**
Westminster '39/01
- Martin, Donald L.**
Stanford '47/12
- Mathes, William A.**
Oklahoma '70/12
- McCullough, Charles W.**
Illinois Tech '41/10
- McDerimid, D. C.**
Washington '24/09

- McKenzie, Maitland B.**
California '22/10
- Mellen, John E.**
Ohio Wesleyan '36/06
- Mense, Allan T.**
Arizona '64/08
- Middlekauff, Richard E.**
Oregon State '61/05
- Miles, John R.**
Oklahoma '64/10
- Miller, Stan N.**
Purdue '64/11
- Monnett, Richard L.**
Wayne State '51/11
- Morgan, Donald R.**
Purdue '57/05
- Mosiman, Floyd W.**
Stanford '17/20
- Moskowitz, John**
Lehigh '47/09
- Mueller, Harald C.**
Illinois Tech '39/16
- Olinghouse, John E.**
Oklahoma '64/06
- Paulsen, R. Thomas**
Illinois Tech '43/06
- Peterson, Otto S.**
Illinois Tech '39/07
- Pidluski, Harry**
Penn State '47/05
- Presser, Ernest R.**
Purdue '61/02
- Pruett, Carl E.**
Illinois '38/14
- Ransom, Raymond A.**
Carnegie-Mellon '25/11
- Ribeiro, Sebastian C.**
N.Y. Polytechnic '44/02
- Richardson, George S.**
Colorado '17/09
- Rietz, Robert E.**
Purdue '50/04
- Rikli, Charles A.**
Oklahoma '67/01
- Roehm, Ralph D.**
Ohio State '17/10
- Romig, Gerald C.**
Penn State '23/12
- Rose, Robert R.**
Oregon State '61/06
- Rukavina, Peter J.**
Purdue '79/02
- Sandercox, Robert A.**
Bethany '51/10
- Sanders, Richard S.**
Missouri Valley '62/08
- Schalliol, Dennis E.**
Indiana '68/04
- Scheidegg, Carl P.**
Stevens Tech '66/09
- Schmid, Marvin G.**
Nebraska '20/09
- Schultz Jr., Niels**
Stanford '35/12
- Schwind, Jeffrey P.**
Toledo '75/04
- Sheehan Jr., Robert M.**
Westminster '76/05
- Sheen, Robert T.**
Lehigh '30/04
- Showerman, John B.**
Northern Michigan '69/10
- Shuck, John W.**
Indiana '67/01
- Shute, Lawrence A.**
Purdue '63/11
- Sims, John H.**
Ohio State '36/07
- Sisson, Harry M.**
Wisconsin '24/11
- Smith, Theodore C.**
Ohio Wesleyan '49/07
- Stafford, Thomas H.**
Purdue '66/09
- Sternbergh, G. Alan**
Westminster '48/11
- Strand, William R.**
Ohio Wesleyan '48/05
- Strecker, Robert B.**
Washington '78/04
- Thurston, Stanley G.**
Iowa State '66/09
- Trubow, George B.**
Michigan '53/15
- Turner, Fred W.**
Ohio Wesleyan '20/10
- Varner, Evvin C.**
Presbyterian '58/20
- Wadsworth, T. P.**
California '17/40
- Walker, Robert D.**
Oklahoma '50/08
- Waters, Michael D.**
Oregon State '73/06
- Webber, Charles E.**
Michigan '61/10
- Wehner Jr., John M.**
Penn '43/01
- Wendell, Mel W.**
Illinois Tech '54/12
- Widmer, Kemble**
Lehigh '34/07
- Wienke, Ralph E.**
Missouri Valley '50/11
- Williams, Eugene S.**
California '24/14
- Williams, Jack L.**
Mt. Union '49/09
- Wise, Alfred B.**
Baldwin-Wallace '43/08
- Wood, Douglas L.**
Michigan '58/07
- Wulff, Kenneth A.**
U.C.L.A. '35/08
- Wyckoff, John W. V.**
Marietta '16/10
- Young, Robert H.**
California '15/10

MEMORIAL GIFTS

Through the year members of the Fraternity and the general public as well make contributions to the Memorial Fund to memorialize or honor brothers and friends. The tax-deductible gifts are meaningful. They live on by underwriting the scholarship and educational programs of Alpha Sigma Phi, adding a new dimension to the lives of young men. These are gifts received during '82-83.

Howard D. Blind, Ohio Wesleyan '52, New Philadelphia, OH, in memory of William Davis, Sr., R.P.I. '50, Raleigh, NC; Mrs. Lillian Boula in memory of James A. Boula, Illinois '36, Allegan, MI; Sidney L. Eaton, Harvard '24, Needham, MA, in memory of all deceased Beta Brothers; Charles De B. Haseltine, California '27, Reno, NV in memory of Arthur B. Fox, California '27, Fairport, NY and Frank F. Hargear, California '18, Beverly Hills, CA.

Robert W. Kutz, California '67, Bakersfield, CA, in memory of Frank F. Hargear, California '18, Beverly Hills, CA; Mrs. Evelyn Martin in memory of Harry R. Martin, Penn State '37, Glassboro, NJ; Frank W. Meyer, U.C.L.A. '55, Mayport, FL, in memory of Fran W. Meyer, Wisconsin '23, Glendale, CA; Stan N. Miller, Purdue '64, Lafayette, IN, in memory of Hugh McCullough Hart, Westminster '39, New Wilmington, PA.

Ralph E. Scott, Pennsylvania '26, Dallas, TX, in memory of Jack J. McDowell, Pennsylvania '25, Bradford, PA; A. Brodie Smith, California '15, San Francisco, CA, in memory of Frank F. Hargear, California '18, Beverly Hills, CA; Evvin C. Varner, Presbyterian '58, Pineville, NC, in memory of C. Gilbert Coburn, Missouri '31, Stamford, CT, and Frank F. Hargear, California '18, Beverly Hills, CA.

T. P. Wadsworth, California '17, Berkeley, CA, in memory of Frank F. Hargear, California '18, Beverly Hills, CA, and George V. Williams, California '13, Hayward, CA; Robert H. Young, California '15, Bakersfield, CA, in memory of Ralph McGoe, California '23, Bakersfield, CA.

(Continued from previous page)

He has been challenging brothers to become members of the **Pinnacle Club** (an annual \$250 gift). Brothers giving \$500 will be recognized as charter members of the **Pinnacle Club**. A special Certificate goes to each **Pinnacle Club** charter member. The new category will be listed for the first time in next year's report.

With even a slight increase in contributing alumni, Alpha Sigma Phi can continue to keep initiation fees steady and competitive. With a large increase of donors, the opportunities for growth and improvement are limitless.

Make sure your name is on this list next year. Make your commitment today to keep Alpha Sigma Phi outstanding. □



Beta Mu, Wake Forest University continues in its winning ways scholastically. The Dean has reported to Headquarters that Beta Mu achieved close to a "B" average for the entire chapter —well above the all-fraternity and all-men's average. Beta Mu has consistently taken top honors at Wake Forest.



Undergraduate delegates from chapters across the country gather at the 1983 National Educational Conference held at The Ohio State University. The Conference centers on leadership and character development. Made possible by alumni contributions to the annual giving program, the event gives young undergraduate brothers a chance to meet, share ideas and come in contact with outstanding speakers, educators and business leaders.

The Phoenix Club

Here are some brothers who deserve special thanks—the members of The Phoenix Club. These brothers during the past year contributed between \$50 and \$136 to the "Old Gal."

These gifts underwrote expansion efforts, special chapter seminars, publications and much more.

The first numbers after each name indicate initiation date; the second numbers indicate the number of times the brother has contributed to the Loyalty Fund.

ALABAMA
Carson, W. G. '43/07
Francis, A. R. '61/08

AMERICAN
Bishop Jr., J. B. '58/04
Bowes Jr., R. '73/01
Buck, T. R. '48/03
Hoak, B. C. '46/03
Ogram Jr., E. W. '48/02
Travaglini Jr., J. P. '66/04

ARIZONA
Austin, E. P. '55/07

ATLANTIC CHRISTIAN
Aycock Jr., M. L. '68/03

BALDWIN-WALLACE
Acton, B. A. '69/06
Larsen, D. H. '53/08
Reynolds, D. L. '51/07
Schnaterbeck, R. A. '53/07
Shirkey, W. L. '46/10
Wise, A. B. '43/08

BETHANY
Ciuffoletti, A. G. '50/05
Cutlip, R. B. '37/11
Kuti, A. J. '35/10
McGall, E. C. '50/10
Saxman, B. E. '33/11

BOWLING GREEN
Dedrick, T. R. '67/20
Deutsch, R. E. '65/10

Philippi, L. D. '76/03
Wischow, H. K. '50/04

BUFFALO
Scarminach, C. A. '63/06
Tennant, P. A., Maj '65/06

CALIFORNIA
Arthur, R. J., Dr. '43/12
Clarke, G. A. '31/03
Drew, J. E. '16/12
Haseltine, C. D. '27/15
Moore, D. '49/09
Needham, W. S. '42/14
Nichols, M. A. '64/07
Reidy, K. J. '58/12
Richards, W. L. '38/04
Richardson, J. A., Mj. Gen. '29/04
Riemke, R. A. '63/09
Warnock, W. K. '40/03
Wells, G. M., Bgen '13/03
White, A. E. '18/12
White, M. K. '56/08
Witzel, E. M. '37/11
Witzel, F. D., Capt '28/11

U.C.L.A.
Donegan, P. W. '54/02
Flickinger, P. E. '47/11
Grube, K. P. '30/08
McCranie, D. B. '54/03
Meyer, F. W. '55/01
Mitchell, H. L. '33/09

Sturgis, C. R. '43/09
Wong, C. '66/08

CARNEGIE-MELLON
Ransom, R. A. '25/11

CASE-WESTERN
Binder, G. P. '39/07

CHARLESTON
Buckalew, J. L. '68/04
Cox II, W. E. '60/05
Kincaid Jr., C. W. '60/05
Spadaro, G. M. '63/04
Treadwell, W. F. '67/07
Willock, R. M. '63/01

CINCINNATI
Sipes, I. G., Dr. '61/07

COLORADO
Carpenter, H. '27/20
Hall, W. M. '15/13
Robertson, O. L. '18/20
Watrous, W. M. '34/08
Weese, H. J. '61/10

COLUMBIA
Collin, W. E. '21/04
Day, A. '20/07
Hall, S. C., Dr. '20/06
Koenig Jr., A. S., Dr. '32/08
Mueller, C. H. '22/09
Poceluiko, N. '49/12

CONNECTICUT
Vanek, R. J. '64/11

CORNELL
Conger III, G. B. '56/10
Engelhardt, C. '39/12
Freeman, J. S. '66/09
Phillips, E. S., Prof '28/05
Van Heiningen, J. J. '57/08

DAVIS & ELKINS
Greer III, R. C. '50/06

DETROIT TECH
Dise, J. H. '66/07

EASTERN MICHIGAN
Wilson, K. D. '69/03

HARVARD
Wyman, J. H. '21/03

ILLINOIS
Cleworth, C. W. '14/10
Gladish, R. L. '61/05
Grater, W. C., Dr. '40/06
Lanterman, J. B. '34/08
Locke III, T. H. '63/09
Lowe, G. K. '31/03
Pruett, C. E., Dr. '38/14
Putta, J. G. '39/09
Robnett, P. H. '48/09
Selig, J. A. '31/10
Tagler, G. J. '70/07
Wickman, R. P. '36/08

ILLINOIS TECH
Anderson, W. E. '41/09
Balza, J. J. '68/11
Basile, J. F. '75/06
Chase, E. D. '58/07
Dekovic Jr., C. W. '54/05
Fijak Jr., T., Cmdr '58/11
Freund, R. J. '44/08
Hrbek, G. M. '75/06
Kegel Pe, R. A. '59/07
Leland, W. H. '63/11
Munini, L. J. '61/07
Oldenburg, R. A. '42/04
Paulsen, R. T. '43/06
Uram, C. G. '51/08
Wage, A. E. '49/10
Weidenmiller, J. E. '41/09
Wendell, M. W. '54/12
Whittingham, D. J. '39/07

INDIANA
Jump, B. W. '77/03

INDIANA TECH
Eversole, K. B. '71/06

IOWA
Akre, C. T. '28/11
Harrison, J. M. '31/09

Annual Loyalty Fund

Knutson, E. H. '37/03
Sidwell, R. R. '32/03

IOWA STATE
Arnold, L. E. '23/12
Jaspers, R. H., Dr. '57/07
Krahmer, B. A. '58/04
Meyer, L. A. '62/06
Riepe, C. R. '35/13
Stearns, W. F. '29/12
Wirth, W. J. '34/14

KENTUCKY
Lyle Jr., I. W. '31/09
Miller, J. W. '33/08

LAWRENCE TECH
Chegash, S. M. '76/03

LEHIGH
Carey, R. P. '49/02
Dempsey, P. J. '52/09
Hendrick, R. R. '46/04
Looloian Jr., J. K. '68/05
Lubbers, A. W. '31/07
Moskowitz, J. '47/09
Mountsier, J. S. '46/09
Sheen, R. T. '30/04
Stine, S. H. '76/04
Williams Jr., H. H. '47/07

MARIETTA
Bush Jr., G. E. '24/04
Hickel, N. R. '33/10
Patrick, G. A. '60/09
Smith Jr., F. D. '48/09

MARSHALL
Britton, G. R. '49/09
Green, N. B. '47/02
Smith, G. O., Ltcol '53/04

MASSACHUSETTS
Carpenter, E. S. '21/07
Johnson, F. W. '61/02
Mulligan, J. '67/03
Shipman, L. C. '37/08

M.I.T.
Boynton, W. P. '29/03

MEMBERS AT LARGE
Robison, C. V. '41/07

MIAMI
Riddle III, P. J. '52/11

MICHIGAN
Cady Jr., S. H. '24/07
Carscallen, C. H. '57/08
Damm, R. M. '30/05
Dukarski, M. J. '73/06
Holzhauer, R. N. '40/12
McDonald, A. L. '26/02
Park, R. W. '54/06
Pederson Jr., E. A. '34/09
Ruhl, R. C. '60/11
Walbridge, W. E. '35/10
Waterbury, W. R. '43/09

MICHIGAN STATE
Ash, F. '62/08
Winquist, C. J. '56/08

MIDDLEBURY
Baines, E. A. '40/08
Powers, W. H., Dr. '35/09

MILTON
Jambrek, W. L. '59/03
Neave, J. W. '42/03

MINNESOTA
Hanna, W. L. '18/09

MISSOURI VALLEY
Brown MD, R. C. '66/04
Sanders, R. S. '62/08
Sleeper, F. H. '49/09

MT. UNION
Leyda, G. R. '29/04

NEBRASKA
Cole, D. F. '13/12
Hay, B. H. '26/01
Parks, N. C. '37/09
Woods, E. M. '36/09

N.J.I.T.
Doby, G. F. '44/13
Johnson, T. W. '39/03
Keach, B. C. '49/10
Sarnowski, W. P. '30/04

NY POLYTECHNIC
Lawler, W. '33/08

N. C. STATE
Bland, M. A. '78/01

OHIO NORTHERN
Fornadley Jr., G. T. '55/10
Hall, E. M. '54/03
Van Dyne, J. R. '72/04
Von Fultz, B. '49/06

OHIO STATE
Augenstein, G. M. '70/04

Brengman, K. C. '53/03
Drescher, C. H. '53/05
Huber, C. C. '42/09
Koch, G. G. '61/13
McLean, C. R. '53/12
Potts, W. D. '66/09
Pritchett, C. P., Dr. '29/10
Roos, H. S. '27/11
Wooley, C. '36/09

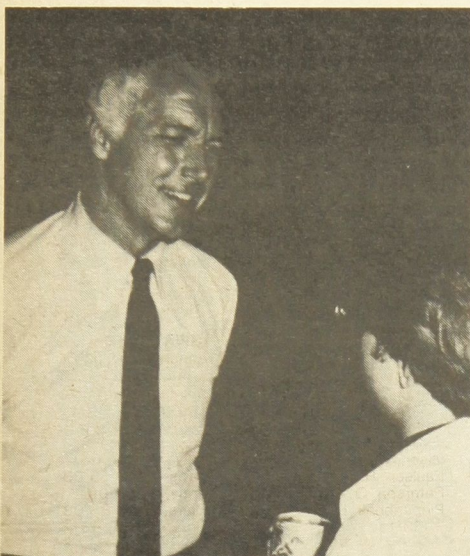
OHIO WESLEYAN
Arai DDS, H. Y. '54/05
Brandfass, E. A. '28/10
Elwood, W. K., Dr. '47/12
Greene, M. F. '30/08
Johnston, R. F. '34/09
Mellen, J. E. '36/06
Nyberg, M. W. '37/03
Polandick, C. '55/09
Severinghaus, J. W. '25/05
Staples, J. R. '31/02

OKLAHOMA
Breden, R. H. '26/11
Conrey, T. M. '36/08
Francis, J. E. '56/10
Lane, G. R. '50/02
Sharp, G. H. '49/08
Thomas, J. S. '48/09

OREGON STATE
Berg, G. D. '76/04
Hagg, O. N. '23/11
Lieuallen, R. M. '58/04
Martin Jr., R. W. '42/07
Russell, E. E. '20/10
Scholz, T. F., Lt '75/01

PENN
Bell, J. H. '47/08
Campbell Jr., L. R. '47/10
Di Pasqua, A. A. '48/02
Knight, A. B. '29/04
Little, B. A. '19/08
Moomaw, S. J. '52/09
Renninger, F. H. '45/09
Russell, G. B. '31/12
Standish Jr., L. J. '32/09

Annual Loyalty Fund



Dr. Ed King, Dean, Bradley University, talks with an undergraduate brother following King's presentation on the role of ideals and ritual in daily life. Your tax-deductible contributions to the Annual Loyalty Fund help make it possible for young brothers to hear and meet nationally-known speakers like King.

PENN STATE

Aughenbaugh Jr. MD, J. A., Dr. '76/02
Brower, R. F. '56/08
Fencil, L. R. '30/10
Harrison, J. '37/02
Holland Jr., W. F., Dr. '28/04
Jones, J. A. '56/04
Kissinger, G. D. '30/05
Lord, A. H. '62/07
Malloy, P. E. '62/04
McDermott, C. W. '32/04
Reichenbach, N. H. '21/11
Van Valkenburg, J. F. '40/10
Walker, R. A., Col. '55/08

PURDUE

Hepler, J. K., Dr. '55/03
McDonald, W. G. '42/04
Mehalko Jr., G. T. '69/03
Morgan, D. R. '57/05
Newgard, J. R. '39/07
Richardson, S. '49/03
Rietz, G. P. '75/03
Rietz, R. E. '50/04
Slavin, P. M. '66/02
Taylor, C. E. '42/04

R.P.I.

Rappolt, J. F. '56/11
Ryan, K. C. '78/02
Smith, G. T. '43/09
Smith, M. W. '78/02
Stephenson II, H. L. '76/04
Vennett, R. M. '61/06

RUTGERS

Crecca Jr., D. '47/01
Dean, J. E. '37/12
Holloway Jr., G. E., Dr. '31/10
Senerchia MD, F. F. '31/12
Shafer, K. '58/10
Wheaton Jr., N. E. '31/12

SACRAMENTO STATE

Carston, A. J. '63/05
Sartini, D. G. '61/06
ST. JOHN'S
Smith, E. I. '32/10
STANFORD
Aw, F. T. '61/03
Hayes, E. B. '31/09
Hopwood, G. L. '64/02
Ingram, D. L. '51/10
Stroud, W. M. '74/07
Sylvester, P. '50/02

STEVENS TECH

Barry, A. C. '61/10
Biamonte, R. V. '42/07
Ermisch, A. R. '26/10
Goldfarb, C. M. '75/07
Heydt, H. J. '70/08
Kleiber, C. E. '26/09
Oliver, B. H. '26/12
Wohlmann, C. A. '63/10

SYRACUSE

Morton, P. S. '39/02
O'Hara, A. P. '38/10

TARKIO

Cox, D. J. '70/03

TOLEDO

Anderson, D. W. '65/05
Boor Jr., R. L. '55/11
Hettick, H. H. '37/09
Hutchinson, J. R. '62/07
Myers, J. S. '61/08
Stall, H. P., Dr. '61/04

TRI-STATE

Buell, C. W. '37/04
Franconi Jr., A. M. '67/09
Jones, J. N. '57/10
Patino, G. '58/01
Peden, E. R. '55/02
Printz II, J. A. '73/01
White, N. O. '41/02

TUFTS

Abdu MD, L. '37/07

Dandrow Jr., R. V.

'46/04
Zamparelli, J. F. '47/08
TULANE
Szymurski, S. R. '68/04

WAGNER

Mayer, G. R. '35/03
Russo, T. J. '47/11

WAKE FOREST

Gray, P. J. '65/06
Lee, R. M. '74/02

WASHINGTON

Burrows, K. G. '46/10
Clearman, J. F. '56/04
Ditmars, I. D. '25/12
Dobson, J. W. '26/10
Foster, L. B. '32/02
Patton, L. G. '48/05
Still, M. D., Capt '75/06
Wood, W. R. '19/12

WAYNE STATE

Blackwell, J. W. '47/02
Dill Jr., C. H. '50/02
Flees, W. L. '67/13
Gaberson, H. A., Dr. '51/14
Monnett, R. L. '51/11

WEST VIRGINIA

Corcoran, H. V. '32/03

W. VA. WESLEYAN

Arnold, J. S. '36/13
Gaston, W. R. '48/04
Simpson, W. W. '41/09

WESTMINSTER

Anderson, G. '71/09
Burr, D. H. '76/02
Garvey, K. J. '75/03
Graven, E. R. '75/04
Herchenroether, D. D. '77/03
Leech, E. J. '77/02
Navarra, F. H. '48/08
Paine, F. V. '44/09
Sheehan, J. P. '77/03
Toporcer, L. H., Dr. '54/06
Vogel, C. E. '49/06

WISCONSIN

McGurn, W. E. '28/08
Sullivan Jr., J. F. '21/08
Yegen Jr., P. '17/15

WOFFORD

Cooksey, J. L. '52/02

YALE

Beckwith, S. A. '15/14
Norton, R. D. '17/04

Honor Roll donors

Brothers who contributed up to \$50 are listed below. And the important thing about the Loyalty Fund is the number of brothers taking part. If your name is here, many thanks. If not, make sure it is next year. And also encourage all brothers you know to join you in this special list. It's good company!

The first numbers following each name indicate initiation year; the second numbers indicate the number of times the brother has taken part in the Loyalty Fund.

ALABAMA

Carson, W. G. '43/07
Copeland, D. A., Dr. '62/06
Cronin, D. J. '48/09
Eich Jr., W. F. '30/04
Francis, A. R. '61/08
Garland, M. V. '66/10
Koch, R. S., Dr. '34/07
Monast, C. H. '40/02
Reinghaus, R. W. '60/03
Rust III, W. W. '65/03

AMERICAN

Anglin, W. M. '49/06
Barkind, W. L. '40/09
Bishop Jr., J. B. '58/04
Bowers Jr., R. '73/01
Braithwaite, G. L. '74/03
Buck, T. R. '48/03
Bullard, D. K. '61/06
Cauffiel, B. B. '74/04
Denny, R. L. '49/02
France, R. W. '69/02
Fry, C. H. '64/03
Hoak, B. C. '46/03
Jeffrey II, J. G. '51/10
Kashishian, S. '76/05
Maher, J. R. '68/01
Marino, F. T. '40/07
Muron, V. A. '51/07
Ogram Jr., E. W. '48/02
Popham III, L. C. '50/09
Shiro, E. L. '57/02
Sonder Jr., O. L. '47/06
Spielman, J. E. '50/02
Springob, H. K., Dr. '48/11
Taylor, K. H. '47/06
Tourtellot, P. L. '57/07
Travaglini Jr., J. P. '66/04
Vallieres, A. I. '41/10

ARIZONA

Austin, E. P. '55/07
Hofer, M. M. '67/06

ATLANTIC CHRISTIAN

Aycock Jr., M. L. '68/03
Barefoot, W. T. '53/05
Davis Jr., M. G. '78/03
Ginn, A. S. '58/01
Gliarmis, L. S. '58/07
Potter, J. W. '58/02
Raspberry Jr., E. A. '58/07
Saleeby, W. M. '76/03

BALDWIN-WALLACE

Acton, B. A. '69/06
Attack, F. C. '44/04
Burton, C. A. '58/01
Chapman, J. H. '48/10
Coy, R. L. '58/03
Dick, R. '47/07
Diddle, B. L. '72/01
Fatica, M. F. '39/09
Geiss, M. G. '46/06
Goss, G. G. '52/09
Govich, B. M. '49/13
Harris, J. '72/01
Hawk, S. T. '64/02
Hunter Jr., G. A. '56/02
Kegel, W. R. '74/05
Kishman, G. H. '43/08
Larsen, D. H. '53/08
Leach, J. K., Dr. '41/10
Mattox, R. E. '61/03
McLaughlin, J. A. '56/06
Moore, R. E. '70/02
Mount, W. '43/09
Nemeth Jr., J. K. '47/09
Owens, W. F. '61/09
Restid, B. W. '72/04
Reynolds, D. L. '51/07
Roth, B. J. '46/02
Schalois, M. J. '51/04
Schnaterbeck, R. A.

Last minute news: Theta, University of Michigan receives commendation from IFC for chapter's participation. Gamma Zeta, Bowling Green takes first in homecoming floats as did Beta Rho, Toledo. Alpha Theta, University of Missouri gets compliments from University for taking part in a special Alcohol Awareness program. Delta Delta, Slippery Rock University gives 50 hours to university phone-a-thon.

'53/07

Shirkey, W. L. '46/10
Stephens, M. E. '73/02
Swanson, A. V. '52/03
Wescott, L. M. '58/04
Wilson Jr., T. N. '49/02
Wise, A. B. '43/08

BETHANY

Bartholomew II, T. '71/07
Ciuffoletti, A. G. '50/05
Cutlip, R. B. '37/11
Davis, K. W. '70/01
Horne, W. H., Dr. '29/12
Kuti, A. J. '35/10
Lester, H. J. '67/06
Maloy, T. D. '61/08
McGall, E. C. '50/10
Moyer, W. T. '60/01
Owen, G. E. '29/05
Sandercox, R. A. '51/10
Saxman, B. E. '33/11
Sipe, H. C. '34/06

BOWLING GREEN

Blakemore, L. M. '52/10
Cameron, W. A. '50/05
Conrad, C. '66/08
Dedrick, T. R. '67/20
Deutsch, R. E. '65/10
Group, G. G. '50/06
Krotz, G. R. '50/09
Moyer, J. W. '70/02
Orr, R. D. '69/07
Philippi, L. D. '76/03
Ryder, G. J. '50/05
Wischow, H. K. '50/04

BUFFALO

Anderson, T. M. '62/08
Barrett, R. E. '62/06
Brown, D. E. '50/01
Bunge, K. E., Maj. '66/09
Clark, P. D. '51/01
Gautille, J. C. '68/01
Harris, G. W., Dr. '51/03
Hiel, A. E. '61/09
Kriz, S. R. '66/05
Krystof, J. E. '56/01
McCurdy Jr., R. C. '53/03
Scarminch, C. A. '63/06
Temnant, P. A., Maj. '65/06
Terlecky, P. M., Dr. '62/07

CALIFORNIA

Arthur, R. J., Dr. '43/12
Bell, D. V., Cmdr '42/10
Best, E. J., Dr. '13/12
Bree, J. H. '24/08
Brown, E. '54/02
Bryant, T. T. '30/06
Carrick, R. P. '54/07
Clarke, G. A. '31/03
Coffey, R. '17/10
Dietz, H. A. '25/13
Doane, J. F. '36/10
Drew, J. E. '16/12
Follis, R. G. '19/03
Fontana Jr., R. D. '27/13

Glassley, F. B. '34/02
Haley, W. W. '58/01
Hasetline, C. D. '27/15
Henderson, J. E. '20/02
Higgins, N. S. '48/05
Kutz, R. W. '67/45
Lutz, R. D. '47/07
Marina, P. M. '40/03
McCarty, F. '28/11
McKenzie, M. B. '22/10
Miller, T. K. '35/09
Moers, D. '49/09
Needham, W. S. '42/14
Nichols, M. A. '64/07
Obendorf, J. H. '47/09
Perham, G. S. '50/04
Perkins, D. C. '64/16
Ragan, E. M. '37/09
Reidy, K. J. '58/12
Richards, W. L. '38/04
Richardson, J. A., Mj. Gen. '29/04

Riemke, R. A. '63/09
Rogers, S. H. '63/05
Ross, E. '18/11
Schick, J. C. '42/07
Smith, A. B. '15/08
Stanaro, C. J. '47/06
Street, W. S. '22/12
Talbot, W. A. '24/02
Thorburn, D. B. '23/04
Wadsworth, T. P. '17/40
Walker, P. J., Dr. '14/09
Walker, S. R. '65/04
Warnock, W. K. '40/03
Watson, D. '27/06
Wells, G. M., Bgen. '13/03
Wertsch, R. A. '37/09
White, A. E. '18/12
White, M. K. '56/08
Wilber, H. M. '22/07
Williams, E. S. '24/14
Williams, G. V. '13/06
Witzel, C. R. '32/10
Witzel, E. M. '37/11
Witzel, F. D., Capt. '28/11
Young, R. H. '15/10
Zanzot, H. C. '31/07

U.C.L.A.

Ackerman, L. C. '36/07
Badger, T. C. '45/06
Butterfield, F. H. '40/03
Byer, E. '26/03
Campbell, L. E. '56/09
Courtney, J. '43/01
DeHaven, D. L. '57/06
Donegan, P. W. '54/02
Field, B. H. '26/11
Fielden, R. C. '27/11
Flickinger, P. E. '47/11
Francisco, J. B. '27/06
Froelich, F. H. '30/11
Gallup, L. K. '42/08
Grube, K. P. '30/08
Hall, J. E. '32/09
Hoyt, J. R. '29/08
Johnson, P. F. '30/09
Knox Jr., F. L. '27/02
Kuster, D. H. '50/08
Leonard, W. R. '34/12
McCrane, D. B. '54/03
Meyer, F. W. '55/01
Mitchell, H. L. '33/09
Nuckles, T. F. '48/05
Rowley, E. A. '70/02
Rush, W. J. '49/06
Sanders, F. H., Cmdr. '49/09
Sturgis, C. R. '43/09
Trammell, R. L. '70/11
Ulrich, M. L. '26/08
Van Paddenburg, J. C. '46/02
Wills, E. C. '22/06
Wong, C. '66/08
Wulff, K. A. '35/08

CARNEGIE-MELLON

Fleming, W. B. '25/10
Ransom, R. A. '25/11
Robinson, J. E. '31/09
Rosing, T. F. '27/10
Schauwecker, K. F. '30/07
Sidells, A. F. '26/10
Treon, D. '27/07

CARTHAGE

Paton, H., Rev. '27/03

CASE-WESTERN

Binder, G. P. '39/07
Cook, A. J. '39/09
Garrison, D. A. '39/07

CENTRE

Adams, M. W. '32/05
Bedinger, G. G. '32/02
Robinson Jr., J. H. '36/07
Willett, J. R. '32/08
Williams Jr., P. A. '32/05

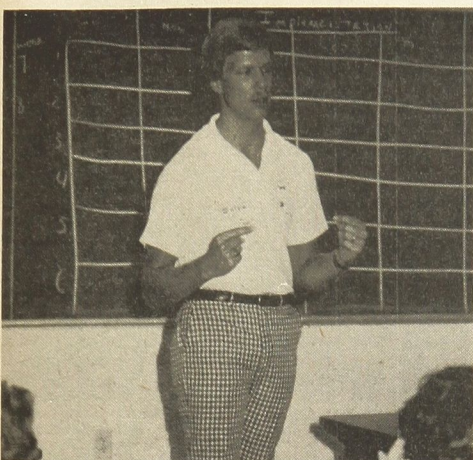
CHARLESTON

Alexander III, G. W. '64/07
Belknap, L. K. '68/05

Chapter notes: At **Mu**, University of Washington, **Mark Arend** elected IFC president, succeeding Alpha Sig **Jeff Rogers**. **Greg Hansen** receives national award for academics and leadership from American Accounting Association. At **Nu**, University of California, Berkeley, members helped local public

schools by creating libraries where before there had been jumbled boxes of books. Across America: chapters are using the new Senior Service from Rituals for Life for their mid-year graduates. **Delta**, Marietta, issues two newsletters and has used gallons of paint in a major house improvement project.

Annual Loyalty Fund



Kevin Garvey, former Executive Director and now on the administrative staff of Clarkson College, presents a workshop on a positive pledge education program at the 1983 National Educational Conference. Alumni contributions to the annual giving program make it possible to bring to young undergraduate brothers outstanding speakers, educators and business leaders. Annual giving also helps provide chapter workshops.

Buckalew, J. L. '68/04
Cox II, W. E. '60/05
Davis, A. I. '65/07
Holliday, R. J. '63/10
Keller Jr., R. G. '63/02
Kincaid Jr., C. W. '60/05
Quinn, S. R. '66/03
Roberts, B. '62/08
Spadaro, G. M. '63/04
Treadwell, W. F. '67/07
Willcock, R. M. '63/01

CHICAGO
Ackley, L. M. '20/02
Elliott, C. B. '22/07
Freidheim Jr., L. E. '30/09
Jackson, R. H. '44/03
McDonald, G. H. '20/10
Puschel, W. E. '29/05
Root, J. V. '24/04
Scholz, R. R. '25/03
Vicek, A. J. '31/06

CINCINNATI
Baetz, G. G. '37/12
Beecroft Jr., W. G. '55/08
Brettschneider, D. J. '69/07
Cohorn, G. P. '72/09
First, T. E. '54/09
Honious, G. L. '61/05
Murphy, D. W. '64/05
Peake, D. W., Lt. '68/06
Schock, D. L. '69/09
Segerer, R. W. '54/05
Sipes, I. G., Dr. '61/07
Vanatta, H. C. '37/06

COE
Allen, J. R. '63/02
MacKenzie, J. J. '62/09
Moore, D. L. '71/02
Shors, W. F. '29/09
Wise, W. M. '58/02

COLORADO
Carpenter, H. '27/20
Commons, J. P. '18/06
Dereus, V. G. '25/09
Dye, P. H. '35/06
Eckel, J. G. '20/09
Gallagher, W. W. '38/08
Giacomini, L. G. '15/03
Greager, H. C. '29/03
Hall, W. M. '15/13
Hanson, J. E. '39/06
Howsam, R. L. '38/10
Johnson Jr., C. P. '39/07
Lewis, R. G. '30/04
Lundgren, J. C., Dr. '30/11

Ramsey, T. E. '25/03
Richardson, G. S. '17/09
Robertson, O. L. '18/20
Sellers, J. E. '29/12
Shideler, F. M. '15/04
Stewart, B. M., Dr. '33/04
Strang, H. L. '24/04
Thomas, E. W. '39/09
Watrous, W. M. '34/08
Weese, H. J. '61/10
Yetter, P. A. '23/03

COLUMBIA
Bruns, J. S. '29/03
Collin, W. E. '21/04
Day, A. '20/07
Hall, S. C., Dr. '20/06
Hawkins, R. C. '16/08
Koenig Jr., A. S., Dr. '32/08
Mueller, C. H. '22/09
Palmer, D. O. '26/08
Poculuko, N. '49/12
Scovil, F. K. '18/05
Weldon, E. D. '13/10

CONCORD
Davis, R. C. '68/05
Poston, S. M. '78/01

CONNECTICUT
Antes, J. E. '51/10
Barton, R. R. '64/09
D. Ambrosio, D. '61/09
Griswold, D. E. '50/09
Gulino, L. J. '68/04
Hogan, A. G. '51/09
Jones, P. B. '67/05
Korponai, D. A. '63/08
Munson, B. E. '62/03
Murray, L. P. '52/07
Nemerout, E. C. '56/01
Nolan, C. V., Mr. '64/04
Vaneck, R. J. '64/11
Velturo, J. W. '50/03

CORNELL
Alden, J. C., Dr. '52/08
Boland Jr., F. J. '42/01
Brown Jr., S. K. '38/01
Conger III, G. B. '56/10
Corrigan, C. R. '76/02
Delaney, W. E. '54/03
DiNapoli, L. A. '75/04
Dunbar, R. A. '50/09
Ellinger, V. P. '73/03
Engelhardt, C. '39/12
Ensdorf, W. E. '59/03
Fox, C. J. '09/02
Freeman, J. S. '66/09
Gillespie, J. J., Ltcol '32/09

Griffith, R. L. '25/03
Hamill, J. W. '53/07
Herbert, B. A. '58/09
Johnson, H. S. '09/04
Linsner, G. P. '55/05
Little, A. N. '74/03
Moore, J. E. '73/03
Nolin, A. R. '20/15
Phillips, E. S., Prof '28/05
Riddle, W. E. '61/06
Ryberg, E. '64/08
Skilton II, H. I. '57/03
Smith, D. C. '27/03
Toussaint, P. J. '66/08
Van Heiningen, J. J. '57/08
Verbsky, J. D. '51/06
Yoder, H. F. '23/06

DAVIS & ELKINS
Bandel, R. A. '61/01
Bunnell, R. B. '49/04
Cathie, W. C. '63/08
Coombs, D. A. '67/02
Dakes, M. G., Ltcol '56/08
Downes, S. C. '53/04
Gaiss, H. G. '56/02
Greer III, R. C. '50/06
Gudz, W. '49/07
Hudson, G. N. '63/06
Hunt, L. B., Ltcol '64/05
Jones, W. F. '51/02
Libby Jr., H. J. '50/04
Libby, W. R. '49/06
Morgan, H. M. '52/05
Renner, E. H. '49/03
Shepler, F. C. '59/02
Thoburn, T. J. '61/04
Wendling, I. P. '50/05
Yulo, F. R., Dr. '49/08

DETROIT TECH
Barton, B. G. '68/08
Barton, G. G. '68/10
Dise, J. H. '66/07

EASTERN MICHIGAN
Hawke, T. '67/03
Karam, A. '66/03
Pearsall, A. '66/07
Wilson, K. D. '69/03

FINDLAY
Apple III, C. M. '72/06
Szentpetery, J. H. '68/02

FRANKLIN & MARSHALL
Snyder Jr., C. F. '41/06

HARTWICK
Beecher, R. V. '35/05
Cody, L. A. '54/08
Davidson, M. C. '78/02
Jamison, M. R. '74/01
King, D. C. '68/05
Kratoville Jr., H. J. '50/05
Marvin, W. R. '73/03
Munson, G. '69/03
Pealer, C. '61/03
Roggensack, H. J. '76/02
Sawicki, R. A. '74/03
Schell, C. S. '73/03
Smith, J. E. '61/04
Spadaccia, R. E. '67/03
Storch, P. T. '72/02
Swift, R. F. '59/05
Williams, R. W. '48/05

HARVARD
Eaton, S. L. '24/10
Farnham, A. S. '26/10
Hall, L. P. '19/08
Wheeler, C. O. '15/02
Wyman, J. H. '21/03

ILLINOIS
Armstrong, H. C. '50/06
Balderson, B. A. '34/04
Baldwin, D. M. '30/10
Black, L. R. '27/10
Bourn, H. J. '59/06

Brydges, W. T. '26/09
Caveney, J. E. '46/04
Christian, H. P., Dr. '33/02
Cleworth, C. W. '14/10
Cowan, L. J. '51/03
Elliott, W. J. '47/04
Foster, J. C. '69/03
Foute, H. K. '38/08
Franks, M. E. '34/10
Fregeau, J. C. '67/04
Gallagher, R. H. '55/10
Garrett Jr., F. J. '37/07
Gillen, M. C. '65/08
Given, C. M. '63/05
Gladish, R. L. '61/05
Glos, D. F. '21/11
Glos, R. E., Dr. '22/14
Goeller, J. A. '28/02
Goranson, G. D. '66/04
Grater, W. C., Dr. '40/06
Haines, R. W. '29/09
Hameetman, R. A. '71/06
Hartmann, C. P. '54/08
Helleny, T. '42/03
Henderson, R. D. '42/05
Hermann, R. J. '63/02
Jakowsky, R. H. '70/03
Johnson, W. '35/02
Kelsey, R. J. '38/10
Kessler, G. W. '40/03
Kotovic, C. L. '26/08
Labahn, A. H. '44/03
Lanterman, J. B. '34/08
LaRue Jr., R. E. '26/08
Lauterbach, W. W. '18/08
Lehwald, J. W. '31/06
Lewis, J. T. '23/04
Locke III, T. H. '63/09
Lowe, G. K. '31/03
Marchiando, P. J. '59/06
McCurdy, D. D. '50/09
Monsson, C. D. '38/09
Nelson, G. M. '39/06
Olson, R. H. '54/03
Park, S. D. '26/03
Pruett, C. E., Dr. '38/14
Putta, J. G. '39/09
Robnett, P. H. '48/09
Selig, J. A. '31/10
Snyder, D. A. '22/08
Sproat, R. A. '49/01
Tagler, G. J. '70/07
Trutter, J. T. '39/09
Weibel, J. R. '62/02
Wickman, R. P. '36/08
Witherspoon, L. T. '47/03

ILLINOIS TECH
Allen, R. L. '53/03
Anderson, R. F. '39/02
Anderson, W. E. '41/09
Anker, E. J. '55/07
Bakalar, R. D. '66/02
Balza, J. J. '68/11
Basile, J. F. '75/06
Bergman, R. S. '53/12
Blaisdell, W. W. '63/02
Bledsoe, V. C. '62/09
Browning, R. W. '44/05
Buben, M. C., Dr. '72/03
Carey, N. W. '41/09
Carlson, R. N. '66/08
Chase, E. D. '58/07
Coccia, M. A. '42/07
Collier, T. P. '39/11
Dahlstrom, T. A. '58/09
Dekovic Jr., C. W. '54/05
Deuter, C. H. '39/07
Devore, P. E. '58/03
Erikson, G. '58/09
Faulkner, F. L. '43/09
Fijak Jr., T. L., Cmdr '58/11
Freund, R. J. '44/08
Gabel, R. B. '65/07
Gallagher Jr., G. C. '47/03
Geoghegan Jr., J. A. '76/02
Gillespie Jr., H. R. '41/03
Giordano, L. P. '57/03

Glossop Jr., D. L. '52/08
Hrbek, G. M. '75/06
Imbsen, G. H. '58/02
Jansen Jr., P. '43/09
Janssen Jr., E. G. '47/10
Jensen, N. B. '61/06
Johnson, F. I. '39/04
Kegel Pe, R. A. '59/07
Kerney, R. W. '40/06
Kizior, D. J. '72/03
Kopera, P. M. '75/03
Krafft, R. C. '48/04
Kustin Jr., C. '54/06
Leland, W. H. '63/11
Long, L. E. '43/05
Lovejoy, J. W. '58/09
Malhock, D. J. '41/07
Matsuda, G. P. '72/07
McCullough, C. W. '41/10
Morgan, G. A. '30/10
Mueller, H. C. '39/16
Munini, L. J. '61/07
Oldenburg, R. A. '42/04
Olson, R. R. '78/03
Paulsen, R. T. '43/06
Peterson, O. S. '39/07
Piepenbrink, R. E. '39/11
Plengey, W. D. '39/11
Rahn, R. W. '51/04
Ruda, M. J. '69/08
Sallmann, D. W. '65/10
Schneeberger, C. E. '61/03
Sholeen, C. R. '66/03
Sindelar, R. L. '54/02
Smith, C. D. '62/07
Stewart, W. P. '57/09
Tappan, P. W. '49/06
Uram, C. G. '51/08
Vanden Boogart, R. C. '72/03
Wage, A. E. '49/10
Weidenmiller, J. E. '41/09
Wendell, M. W. '54/12
Whittingham, D. J. '39/07
Zinkel, R. R. '50/05

INDIANA
Anderson, R. W. '71/05
Beeman, G. L. '68/09
Buruff, J. H. '67/07
Brown, T. L. '75/01
Butler, P. A. '68/01
Chaney, J. R. '67/09
Chisholm III, R. D. '77/03
Cockrum, R. '67/02
Egler, D. L. '67/01
Hittinger, S. T. '74/02
Hoffman, D. J. '77/03
Jump, B. W. '77/03
Kariya, J. P. '73/04
Koch, C. J. '79/04
Lewis, R. G. '67/01
Lucas, D. J. '67/01
Maus, R. T. '67/01
McHenry, J. F. '72/01
McKay, J. T. '68/05
Nugen, B. R. '67/18
Richardson, R. J. '68/01
Schalliol, D. E. '68/04
Shuck, J. W. '67/01
Sunderman, M. R. '70/03
Vandermay, F. W. '68/01

INDIANA TECH
Bohlim, R. C. '72/04
Cates, R. '71/03
Eversole, K. B. '71/06
MacPherson II, D. R. '71/04
Rauscher, K. R. '70/06
Schuerman, T. M. '74/02

IOWA
Akre, C. T. '28/11
Brandhorst, G. H. '27/05
Carmichael, H. H. '28/04
Carmichael, W. P. '30/09

Claassen, H. J. '28/02
Conn, B. C. '28/02
Engeseth, H. B. '25/03
Hanna, K. L. '29/02
Harrington, R. J. '28/10
Harrison, J. M. '31/09
Holmes, V. V. '28/01
Hutchison, E. J. '24/09
Jorgensen, A. P. '32/03
Knutson, E. H. '37/03
Lubke, H. A. '38/03
Manchester, W. H. '29/03
Maurer, N. L. '33/02
Runke, R. C. '31/01
Sears, J. H. '38/02
Sidwell, R. R. '32/03
Thompson, E. A. '35/01

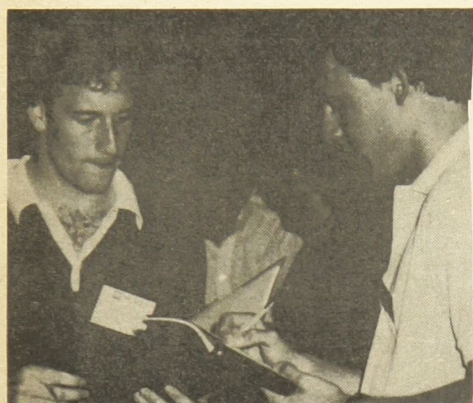
IOWA STATE
Anderson, W. J., Dr. '55/11
Arnold, F. J. '23/08
Arnold, L. E. '23/12
Arnold, W. R. '25/08
Best, L. M. '21/05
Cloys, W. '20/08
Davis, T. W. '79/03
Drew, D. '59/09
Eilers, J. W. '68/03
Floren, T. '68/03
Fry, L. V., Dr. '34/08
Grimes, G. C. '65/08
Groves, R. E. '32/02
Gunderson, J. M. '56/09
Heiberg, E. R. '60/03
Hill, R. A. '74/05
Hilstrom, H. R. '31/12
Horgen, I. S. '20/02
Jaspers, R. H., Dr. '57/07
Jennings, R. E. '61/07
Johnson, H. C. '58/04
Kallett, R. H. '70/02
Kerr, R. J. '65/02
Krahmer, B. A. '58/04
Landis, D. A. '76/02
Meyer, L. A. '62/06
Mino, J. E. '72/06
Mortimer, H. C. '20/02
Nickerson, H. J., Dr. '58/09
O'Connor, W. J. '56/07
Paras, G. S. '34/10
Plotz, G. A. '69/05
Riepe, C. R. '35/13
Rule, J. R. '56/07
Samson, L. P. '73/03
Stearns, W. F. '29/12
Sterbenz, F. '59/09
Thomas, C. W. '52/05
Thurston, S. G. '66/09
Wirth, W. J. '34/14
Ziemann, T. E. '65/05

KENTUCKY
Allen, B. L. '27/08
Bischof, L. F. '18/06
Davis, L. B. '31/09
Engler, F. E. '49/09
Jones, O. L. '20/08
Kane, J. M. '32/11
Lyle Jr., I. W. '31/09
Magoffin, B. '38/49
Manly III, S. '26/08
McUddy, C. O. '17/05
Miller, J. W. '33/08
Saunders, W. H., Ltcol '28/07
Wilson, W. C. '26/10

LAWRENCE TECH
Armbruster, M. D. '72/02
Chegash, S. M. '76/03
Komendera, T. J. '74/01
Look Jr., R. C. '74/01
Weir, T. K. '67/07

LEHIGH
Abel, R. W. '51/07
Ambrogio Jr., J. N. '39/08
Blake III, R. E. '69/07
Brown, R. W. '32/02
Brumbaugh, H. F. '57/02
Carey, R. P. '49/02
Dempsey, P. J. '52/09

Annual Loyalty Fund



Mike Gombert, left, Davis & Elkins and Steve Amend, Penn State, get to know each other at the 1983 National Educational Conference of Alpha Sigma Phi. Opportunities for brothers to come together to share fraternalism, ideas and gain leadership skills are made possible in part by alumni annual giving. Your gift will help underwrite the annual educational conference, regional leadership schools and various chapter workshops.

Dworski, L. D. '66/08
Gallagher, E. S. '34/12
Gleichmann Jr., T. F. '57/08
Griffith, G. J. '71/02
Hamilton, R. W., Dr. '52/07
Haviland Jr., R. L., Ltcol '60/07
Heilman III, E. H. '59/02
Hendrick, R. R. '46/04
Herrick, R. F. '31/01
Hovanec Jr., G. A. '72/07
Koppes, A. W. '50/03
Krumrine III, P. H. '70/08
Lewis, G. B. '63/04
Looloian Jr., J. K. '68/05
Lubbers, A. W. '31/07
Marsden, R. D. '37/03
Moskowitz, J. '47/09
Mountsier, J. S. '46/09
Quinn III, J. J. '74/07
Rankin, C. D. '30/11
Regi, W. E. '74/02
Roe, R. T. '71/03
Sheen, R. T. '30/04
Stine, S. H. '76/04
Sunderland, D. E. '62/07
Swatt, K. E. '68/02
Volpe, R. J. '72/05
White, E. T. '39/06
Whitmer, K. '34/07
Williams Jr., H. H. '47/07
Wilson, R. M. '33/10
Zacharchuk, W. V. '46/06

LOYOLA

Basich, J. E. '68/03
Brown, M. D. '70/09
Burrell, M. J. '73/04
Cascino, A. E. '70/03
Laubhan, D. A. '68/07
Liebentritt, D. J. '70/07
Lynch, M. A. '75/06
O'Donnell, J. K. '68/05

LYCOMING

Bartlow, K. P. '65/04
Ellenberger, M. E. '72/03
Harris, D. G. '66/03
Melick, D. R. '74/05
Platoff, K. S. '75/04
Unruh, R. J. '65/01

MARIETTA

Bush Jr., G. E. '24/04
Chadwick, R. C. '67/02
Chorpenning, F. W., Ltcol '34/05
Christy, R. N. '38/09

Crawford, C. H. '29/10
Crecco, R. D. '57/02
Crone, P. C., Dr. '26/08
Daniels, B. S. '64/03
Decker, R. O. '28/02
Evans, S. A. '66/02
Felici, A. '48/09
Forrester, C. W. '66/06
Freiberg Do, J. R. '57/04
Frye, J. C. '31/08
Gibbens, W. B., Judge '18/04
Hejl, A. C. '55/07
Hickel, N. R. '33/10
Holst, L. S. '31/03
Illencik, B. J. '61/05
Kelley, W. F. '55/07
Kotchka, J. A. '58/06
Lord Jr., S. M. '60/04
Mohn, M. P., Dr. '49/08
Patrick, G. A. '60/09
Smith Jr., F. D. '48/09
Stewart Jr., G. E. '48/02
Wyckoff, J. W. '16/10

MARSHALL

Astorg, R. G. '65/01
Basham, H. W. '77/04
Blevins, D. M. '70/02
Bootton, E. M. '49/05
Britton, G. R. '49/09
Bunch, R. G. '33/15
Chapman, J. H. '55/02
Durrett, W. B. '36/02
Flack, P. R. '70/03
Green, N. B. '47/02
Henderson, C. C. '29/11
Matthews, W. F. '65/03
Smith, G. O., Ltcol '53/04
Winter, P. C. '31/09

MASSACHUSETTS

Barke, H. E. '37/04
Battistella, R. M. '55/04
Benead MD, C. '35/03
Bishop, F. M. '27/04
Brewster, D. T. '39/07
Canney, G. G. '26/07
Carpenter, E. S. '21/07
Dodgett, T. E. '60/08
Doolittle, A. H. '23/03
Dresser, M. '25/08
Johnson, F. W. '61/02
Kibbe, M. H., Dr. '31/03
Luce, P. E. '36/08
Minkwitz, S. A. '67/05
Mulligan, J. '67/03
Poey, F. '21/04
Shipman, L. C. '37/08
Southard Jr., J. K. '60/06
Stranger, H. L. '37/06
Wilbur, H. A. '58/02

M.I.T.

Boynton, W. P. '29/03
Peterson, R. '29/01
Redcay, A. K. '34/09

MEMBERS AT LARGE

Clark, F. V. '44/07
Herman, D. E. '69/08
Robison, C. V. '41/07

MIAMI

Pitts, T. R. '53/04
Riddle III, P. J. '52/11

MICHIGAN

Beckman, W. A. '54/06
Bieser, C. O. '47/08
Brady, F. J. '30/08
Bronson, K. R. '38/03
Brown, D. G. '65/06
Cady Jr., S. H. '24/07
Caley, T. G. '48/01
Campbell, J. A. '20/06
Carscallen, C. H. '57/08
Chapman, M. A. '33/13
Conlon, T. L. '25/10
Damm, R. M. '30/05
Devine Jr., W. D. '60/07
Dodd, R. '42/04
Dukarski, M. J. '73/06
Dunham, D. B. '24/09
Dunham, H. L. '17/13
Eades, C. C. '19/04
Engel, C. S. '30/09
Garner, J. E. '29/07
Gernt, W. C. '14/06
Grinnell, H. S. '25/11
Hagar, C. N. '37/04
Hofelich, R. M. '27/08
Holzhauer, R. N. '40/12
Huber MD, J. F. '22/05
Jacobson, E. A. '74/03
Janet, R. J. '41/10
Johnson, A. F. '48/05
Jung, R. H. '29/05
Lauria, L. '62/08
Magnus Jr., A. H. '51/06
Mason, W. G. '17/07
McClintie, W. A. '33/03
McDonald, A. L. '26/02
McDonald, N. S. '29/03
McWood, A. B. '49/07
Murray, J. R. '40/09
Nelson, K. M. '39/06
Park, R. W. '54/06
Pederson Jr., E. A. '34/09
Pomeroy, J. A. '26/06
Powell, D. S. '67/06
Robison, S. W. '27/08
Rockershausen, W. F., Lt '56/06
Ruhl, R. C. '60/11
Schwark, J. R. '65/06
Shirrell, R. D. '47/04
Shoup Jr., G. L., Dr. '47/08
Stoller, R. A. '28/03
Sturm, W. D. '56/05
Tessmer, R. '48/06
Thompson, R. E. '64/09
Thornley, R. B. '33/02
Tinnckell, C. C. '75/03
Trubow, G. B. '53/15
Walbridge, W. E. '35/10
Waterbury, W. R. '43/09
Webber, C. E. '61/10
West, L. R. '38/06
Wieneke, R. F. '19/10
Wilson, W. W. '47/11
Wood, D. L. '58/07
Zahnow, O. C. '37/07

MICHIGAN STATE

Ash, F. '62/08
Beyer, A. R. '59/09
Cornell, T. B. '56/09
Leindecker, J. P. '58/07
Winquist, C. J. '56/08

MIDDLEBURY

Baines, E. A. '40/08
Chapin Jr., M. W. '25/05
Donnelly, J. L. '25/08
Frank, H. J. '25/07
Happ, C. L. '25/11
Powers, W. H., Dr. '35/09

Siipola, G. T. '30/07

MILTON

Hein, L. K. '56/05
Jambrek, W. L. '59/03
Konrad, T. J., Capt '62/01
Moss, M. S. '66/06
Mugger, T. C. '49/08
Neave, J. W. '42/03

MINNESOTA

Anderson, K. E., Dr. '30/10
Andrus, M. H. '32/03
Clark, L. S. '20/08
Denison, C. A. '30/12
Gallagher, R. E. '21/05
Hanna, W. L. '18/09
Regnier, L. A. '23/10
Smith, L. P. '19/07
Thompson, T. M. '30/07

MISSOURI

Bredall MD, J. J. '29/04
Frerck, W. G. '29/02
Gill, B. F. '46/08
Gwinner, D. C. '55/12
Moore, J. A. '30/07
Murray, R. W. '50/08
Stewart, W. D. '29/03
Thayer, W. W. '47/01

MISSOURI VALLEY

Bernhardt, J. G. '62/11
Billington, B. J. '54/06
Blackburn, J. L., Dr. '49/08
Brown MD, R. C. '66/04
Curry, T. G. '60/08
Dowd, R. L. '68/09
Edwards, K. '71/07
Espeland, C. '61/04
Gehrke, C., Dr. '45/03
Jager, K. A. '68/10
Keller, W. H. '70/05
Kleiner, G. A. '73/02
Lee, L. M. '56/07
Molander, L. L. '61/05
Neill, W. E. '58/04
Orvis, J. W., Cmdr '60/01
Sanders, R. S. '62/08
Sleeper, F. H. '49/09
Weeks Jr., R. W. '57/03
Wienke, R. E. '50/11

MT. UNION

Hutton, C. O. '29/05
Keller, C. C. '29/08
Kohl, M. F., Dr. '30/07
Krebs, F. J., Dr. '29/25
Leyda, G. R. '29/04
McFarland, V. A. '29/09
Soldo, B. A. '50/03
Thoma, D. J. '29/08
Wehner, R. S. '29/03
Williams, J. L. '49/09
Yaggi, J. S. '35/02

NEBRASKA

Cole, D. F. '13/12
Denning, R. H. '38/09
Dunn, W. H. '39/09
Felton, H. W. '21/10
Hay, B. H. '26/01
Mumford, W. G. '43/02
Parks, N. C. '37/09
Schmid, M. G. '20/09
Warren, C. '23/02
Woods, E. M. '36/09

N.J.I.T.

Delahanty, J. L. '47/03
Doby, G. F. '44/13
Elias, M. J. '26/03
Gauch, J. H. '50/09
Johnson, T. W. '39/03
Keach, B. C. '49/10
Kupfrian, W. J. '30/02
Sarnowski, W. P. '30/04
Wolpert, F. S. '26/09

NY POLYTECHNIC

Alexion, J. C. '38/12
Crager, W. C. '26/08
Kaupp, W. O. '35/09
Lawler, W. '33/08

Ribeiro, S. C. '44/02
Wandmacher, C. '45/03

N. C. STATE

Bland, M. A. '78/01
Coward, W. B. '38/11
Ellis, R. R. '43/02
Lindstrom Jr., J. H. '30/09
Livera, A. L. '36/02
Lovelace, E. K. '36/07
Nobles, J. W. '78/02
Schoof, H. F., Dr. '33/02
Shore, T. J. '77/04
Williams, G. R. '78/02

NORTHERN MICHIGAN

Blemberg, P. J., Capt '69/06
Lattrel, R. L. '74/02
Showerman, J. B. '69/10
Strutzel, P. J. '69/03

OHIO NORTHERN

Allen, N. L. '50/04
Brouse Jr., D. L. '59/02
Ciaston, S. F. '72/06
Colonna, J. G. '69/02
Emerson, J. '65/08
Fender, F. D. '38/05
Fornadley Jr., G. T. '55/10
Hall, E. M. '54/03
Hansen, H. J. '46/10
Henning, L. R. '48/09
Mitchell, J. L. '65/02
Needy Jr., J. A. '55/09
Schaffner, C. R. '72/09
Smith, D. M. '56/02
Smith, V. L. '66/07
Thomas, B. A. '73/05
Tutelian, E. '55/02
Van Dyne, J. R. '72/04
Vogt, T. F. '69/10
Von Fultz, B. '49/06

OHIO STATE

Armstrong, G. S. '43/08
Aten, F. G. '40/10
Augenstein, G. M. '70/04
Boner, E. W. '48/02
Bougher, E. L. '25/09
Breneman, K. C. '53/03
Burns, W. B. '63/08
Calaway, C. P. '19/13
Calhoun, R. L. '28/11
Cameron, J. R. '39/07
Demelker, B., Col. '30/05
Drescher, C. H. '53/05
Dumont, W. P. '16/09
Gerlach, J. G. '43/11
Grossman, R. A. '67/09
Harper, C. L. '40/07
Herman, H. A. '24/09
Huber, C. C. '42/09
Jahn, A. C. '27/08
Koch, G. G. '61/13
Kohl, J. R. '39/07
Lape, D. K. '54/10
Lathrop, G. L. '23/11
Leasure, D. E. '65/01
Lemon, G. E. '31/17
Linn, G. L. '49/10
McLean, C. R. '53/12
Millay MD, G. F. '40/09
Millious, J. M. '34/04
Mohr, P. D. '53/09
Oberlin, H. R. '54/07
Potts, N. D. '28/10
Potts, W. D. '66/09
Pritchett, C. P., Dr. '29/10
Reece, R. M. '51/04
Roehm, R. D. '17/10
Rogers, S. G. '77/03
Roos, H. S. '27/11
Schellenger, S. W. '27/03
Schuster, H. L. '45/08
Schwiesow, C. W., Dr. '33/04
Sims, J. H., Capt '36/07
Slemmons, R. H. '24/05
Stegmiller, H. W. '32/10
Swisher, M. H. '21/08

Tuttle, G. D. '23/10
Wachtel, F. T. '76/04
Wooley, C. '36/09
Young, R. W. '22/06

OHIO WESLEYAN

Arai DDS, H. Y. '54/05
Bailey, M. C. '37/04
Beck, G. C. '40/11
Beeghly, C. M. '27/13
Beeghly, R. T. '31/01
Blind, H. D. '52/07
Brandfass, E. A. '28/10
Broberg, W. E. '47/08
Burns, R. F. '37/08
Elwood, W. K., Dr. '47/12
Fargo, R. B. '57/02
Ferris, J. S., Capt '39/04
Franklin, R., Dr. '36/01
Graham, W. F., Lt '63/03
Greene, M. F. '30/08
Guest, T. W. '47/05
Hadsell, N. W. '52/09
Hatch, E. R., Dr. '48/03
Hockman, W. H. '35/11
Hornans, R. '33/09
Humphreville, J. E. '49/02
Johnson, O. N. '17/06
Johnston, R. F. '34/09
Lawson, K. S. '51/05
Lovell, C. E. '27/10
Lovell, E. M. '33/10
McCammon, M. B. '20/06
Mellen, J. E. '36/06
Merrill, J. B. '52/03
Mills Jr., A. A. '37/09
Mullin, G. B. '26/03
Murdoch, W. D. '28/02
Naylor, C. I. '32/06
Nyberg, M. W. '37/03
Ott, D. C., Dr. '31/05
Otto, C. C. '53/07
Plunkett Jr., J. A. '49/06
Polandick, C. '55/09
Pratt, S. F. '32/11
Rinear, H. W. '40/02
Rayen, J. '26/08
Recker, T. L. '35/10
Rees, W. H. '28/10
Reiter, D. K. '59/08
Robertson, W. M. '23/03
Severinghaus, J. W. '25/05
Smith, C. '17/02
Smith, T. C. '49/07
Spees, L. G. '57/04
Staples, J. R. '31/02
Stephens, J. H. '48/12
Strand, W. R. '48/05
Sullivan, D. L. '49/08
Swank, R. W. '49/07
Swisher Jr., J. H. '47/04
Thaler MD, D. M. '49/06
Turner, F. W. '20/10

OKLAHOMA

Ashton, F. T. '29/07
Barnett, W. J. '32/09
Breedon, R. H. '26/11
Christian, V. G. '67/03
Clark, J. A. '30/06
Colbert, B. R. '48/09
Collins Jr., J. E. '53/06
Conrey, T. M. '36/08
Damelio, C. '69/03
Daniels, C. E. '61/07
Everett, J. P. '37/12
Fields, J. D. '23/03
Fleet, J. J. '24/08
Francis, J. E. '56/10
Gibbs, R. S. '51/12
Gilliland, R. E. '51/03
Gordon, W. T., Dr. '50/08
Graham, R. E. '74/03
Haas Jr., G. G. '67/07
Harmon, J. T. '59/04
Janson Jr., N. F. '68/03
Joyce, W. V. '24/10
Kelly, G. C. '63/03
Lane, G. R. '50/02
Lucy, R. F. '51/04
Mathes, W. A. '70/12





Alpha Sigma Phi makes available at considerable savings a special package insurance program for chapter houses to insure building, contents, loss of rents, public liability and other coverage. Chapters, house corporations and alumni associations should contact Fraternity Headquarters for further information. The program allows local agents to remain involved.



If Grand Senior President **Stan Miller**, left, tells you that being GSP is all work, don't believe him. Here he performs an official function—greeting the 1983 National Sweetheart, Colleen Alberts. At right is her escort, **Casey Liotta** of Widener University. Miss Alberts, selected by undergraduates for her campus activities, scholarship and beauty, was recognized at the National Educational Conference. The Conference, a leadership and character development experience, is underwritten in part by your participation in the annual giving program.

Meyer, P. B. '55/02
Miles, J. R. '64/10
Montgomery, R. P. '23/08
Montgomery, R. S. '26/05
Morrison, R. I. '29/04
Mount, P. C. '69/07
Murphy, E. A. '73/02
Olinghouse, J. E. '64/06
Paulos, V. E. '48/01
Pierce, I. J. '35/09
Pierce Jr., W. L. '50/02
Rikli, C. A. '67/01
Sharp, G. H. '49/08
Sheffer, J. B. '61/02
Slayton, J. A. '72/06
Terry, S. L. '66/06
Thomas, J. S. '48/09
Vassilakos, D. G. '70/06
Walker, R. D. '50/08
Wiggins, W. E. '23/09
Willits, M. P. '23/03
Woody, W. P. '62/06

PENN

Barnshaw, H. D., Dr. '24/10
Bell, J. H. '47/08
Bentz Jr., L. W. '45/08
Boag, W. A. '19/11
Brown, W. R. '30/06
Brummer, J. A. '28/05
Budd, R. M. '21/08
Campbell Jr., L. R. '47/10
Cawley, R. C. '38/09
Cowan Jr., H. B. '43/04
Craft, J. E. '48/05
Cupp, P. J. '21/09
Delamater, R. W. '26/06
Di Pasqua, A. A. '48/02
Eaton, M. T. '19/04
Eaton, W. K. '19/09
Grimaldi, J. T. '47/04
Haenn Jr., W. '42/05
Hall Jr., F. '57/02
Haydock Jr., R. '42/01
Johnson Jr., G. S., Dr. '47/07
Jones, W. W., Rev. '48/03
Knight, A. B. '29/04
Knox, C. E. '46/03
Lasor, W. S., Rev. '28/08
Little, B. A. '19/08
Mainardi Jr., A. J. '51/01
Maloney, W. G. '36/05
Mitchell, C. H. '40/09
Moomaw, S. J. '52/09
Place Jr., J. D., Lt. '39/05
Potts, A. J. '50/01
Puzio, T. J. '50/06
Renninger, F. H. '45/09
Ritchie, B. T. '60/07
Russell, G. B. '31/12
Schweikert, D. K. '42/06
Scott Jr., R. E. '26/11
Sparks, D. R. '46/06
Standish Jr., L. J. '32/09
Sunder, W. G. '28/06
Taylor, A. M. '19/04
Thorpe Jr., C. E. '39/06
Tracy, E. A. '58/02
Van Ranst, M. A. '34/05
Waite, F. R. '43/08
Washburne Jr., L. F. '35/03
Wehner Jr., J. M. '43/01
Young, J. K. '30/02

PENN STATE

Astorino, L. D. '65/10
Aughenbaugh Jr. MD, J. A., Dr. '76/02
Bader, G. '23/10

Baker, R. E. '22/06
Boyd, G. H. '36/05
Breedlove, A. M. '77/02
Brower, R. F. '56/08
Brown, H. S. '56/03
Bufalini, B. A. '74/02
Colbaugh, J. E. '67/07
Custer, S. A., Col. '41/10
Dare, J. H. '69/05
Dean, R. C. '61/08
Eaglesham, T. W. '33/07
Eichholtz Jr., R. A. '70/05
Fallon III, T. F. '41/06
Fencil, L. R. '30/10
Ferrari, R. A. '56/06
Gilbert, P. F. '41/11
Good, W. G. '58/09
Graham Jr., S. T. '31/02
Griffith Jr., A. A., Ltcol '58/04
Gromiller, J. W. '51/08
Hallman, K. H. '30/03
Hancock, R. F. '29/09
Harris Jr., A. C. '32/07
Harrison, J. '37/02
Hicks, A. J. '36/02
Hinkel, R. R. '58/02
Holland Jr., W. F., Dr. '28/04
Houghton, W. R. '37/03
Hunt Jr., M. '31/02
Jones, H. L. '30/08
Jones, J. A. '56/04
Jones, J. K. '26/09
Kissinger, G. D. '30/05
Kistler, D. R. '56/05
Kurkiewicz, R. M. '77/02
Leonard, R. '44/08
Lord, A. H. '62/07
Malloy, P. E. '62/04
Mamula, W. '77/04
Marozzi, E. V. '64/04
Martin, A. L. '48/04
Martinez, M. A. '51/07
McAmbly, J. F. '33/05
McDermott, C. W. '32/04
McDougall, C. D. '23/05
Meckes, R. A. '70/03
Megargel, C. E. '22/12
Nicklas, J. W. '19/06
Novak, R. L. '42/03
O'Haren, T. J. '54/07
Page Jr., V. C. '37/10
Parnley, H. M. '28/08
Patton, J. M. '33/10
Perry, D. G. '42/08
Pidlusi, H. '47/05
Predzin, J. L. '47/08
Prystowsky, E. N. '66/02
Quinn, M. G. '30/09
Radov, J. S. '46/02
Rankin, P. B. '23/11
Reichenbach, N. H. '21/11
Rodd, N. F. '29/08
Romig, G. C. '23/12
Roush, R. E. '30/02
Seitz, K. A. '75/02
Selden, J. W. '38/10
Shaeffer, C. W. '30/06
Smith, R. H. '54/09
Sowers, C. W. '53/05
Starnier, V. R. '76/02
Tate Jr., M. S. '41/02
Thompson, R. D. '53/07
Van Valkenburg, J. F. '40/10
Vohs, C. J. '75/04
Walker, R. A., Col. '55/08
Wannemacher Jr., P. S. '48/02
Warrender MD, W. F. '53/08
Whisler, J. H. '33/06
Wilcox, R. L. '27/03
Williams, H. S. '35/03
Wise, D. H. '72/02

PRESBYTERIAN

Beckham, R. S. '28/05
Blankenship, D. S. '28/09

Braswell, J. M. '61/01
Cranford, W. H. '34/04
Garrett, D. T. '61/04
Slavin, P. M. '66/02
Stankewich, S. R. '76/03
Varner, E. C. '58/20
Williams III, E. L. '79/01

PURDUE
Abrams, M. J. '71/01
Allen, C. D. '72/07
Allen, D. M. '77/01
Allen, E. N. '71/08
Allen, R. A. '43/10
Baas, J. E. '65/03
Baker, R. D. '73/11
Barnes, J. V., Dr. '65/01
Bartlett, B. R. '72/01
Baumann, B. E. '66/03
Booty, R. A. '61/02
Byers, M. J. '66/01
Cady, D. W. '66/05
Caldwell, W. R. '58/05
Clarke, D. W. '68/05
Cortelyou, R. B. '68/01
Cox, K. A. '72/04
Cragun, A. D. '69/02
Crarry, S. F. '72/05
Crosen, E. A. '68/03
Cunningham, D. G. '72/07
Dickerson, J. N. '71/03
Eastwood, J. A. '60/01
Eickhoff, D. R. '64/07
Faulkner III, F. L. '71/06
Ford, L. C. '72/05
Frankenfield, R. M. '69/01
Frapwell, R. T. '72/08
Freehafer, C. R. '55/05
Froman III, C. A. '76/03
Giunipero, L. C. '67/07
Goodwin, J. L. '68/02
Grossman, F. A. '39/04
Hall, B. '46/02
Hallett, R. J. '64/01
Hamman, J. D. '67/02
Hays, L. M. '55/01
Henry, C. E. '69/01
Henry, G. H. '69/01
Hepler, J. K., Dr. '55/03
Holmes, T. B. '76/01
Hood, G. A. '72/10
Hudson Jr., C. E. '61/04
Huffman, E. B. '39/03
Hurt, C. D. '63/03
Hutton, S. J. '68/02
Karpick, D. M. '71/03
Klink, K. C. '79/01
Knapp, J. E. '68/02
Krejci, W. G. '67/09
Kreps, D. W. '72/02
Kuchar, R. A. '58/09
Lamberson, A. L. '53/01
Leech, J. N. '69/08
Lilly, J. H., Dr. '68/01
Lindemann, R. C., Dr. '71/09
Longo Jr., M. '67/01
Mason, J. E. '64/01
Mathew, A. G. '73/01
Maxted, W. R. '44/08
McDonald, W. G. '42/04
Mehalko Jr., G. T. '69/03
Mihalik, A. S. '68/07
Miller, S. N. '64/11
Morgan, D. S. '69/01
Morgan, D. R. '57/05
Mouw, H. J. '46/10
Nayman, K. R. '71/04
Newgard, J. R. '39/07
Pearson, R. G. '67/06
Presser, E. R. '61/02
Price, D. A. '65/04
Richardson, S. '49/03
Richey, R. C. '69/07
Rietz, G. P. '75/03
Rietz, R. E. '50/04
Risk, J. G. '58/01
Roberts, K. L. '69/02
Robinette, G. W. '79/01
Rorke, T. P. '55/07
Rukavina, P. J. '79/02
Sausaman Jr., R. F. '64/10
Schrader, J. D. '64/05
Seratin, A. J., Dr. '62/04
Shroyer II, G. W. '51/01

Annual Loyalty Fund

Shute, L. A. '63/11
Sinise, G. A. '70/06
Skidmore, T. A. '71/02
Slavin, P. M. '66/02
Smith, B. M. '65/02
Smith, S. W. '75/07
Smith, T. D. '77/02
Stafford, T. H. '66/09
Stanton, L. A. '69/01
Stephan Jr., R. E. '65/02
Stewart, R. A. '62/01
Stutsman Jr., P. M. '56/03
Sum, R. N. '52/05
Swartzbeck, G. W. '68/01
Taylor, B. L. '42/01
Taylor, B. E. '65/01
Taylor, C. E. '42/04
Topel, R. A. '75/05
Vanskoik, R. H. '59/01
Villard, M. G. '75/02
Wachter, C. M. '68/09
Walker, L. J. '69/01
Walker, R. S. '73/01
Wanders, S. P. '75/04
Warner, R. L. '76/04
Weinhardt, S. A. '72/06
White, W. E. '76/01
Williams, H. W. '69/07
Wilson, G. G. '66/05
Wright, W. P. '70/04
Wulf Jr., C. A. '41/03
Young Jr., R. A. '66/05
Yount, R. '75/03

R.P.I.
Friedman, R. A. '77/03
Hoefflein, J. R. '76/03
Lansing, K. J. '77/01
Mackey, L. B. '47/06
Martin Jr., W. J. '75/05
Murphy, C. J. '66/02
Rappolt, J. F. '56/11
Ryan, K. C. '78/02
Silverman, B. C. '76/03
Smith, G. T. '43/09
Smith, M. W. '78/02
Stephenson II, H. L. '76/04
Vennett, R. M. '61/06

RIO GRANDE
Armbruster III, G. A. '72/02
Taylor, H. C. '73/06
Williams, M. A. '79/01

RUTGERS
Aaroe, W. H. '38/03
Berry, C. A. '53/03
Bills, C. T. '48/05
Blasi, M. G. '65/07
Britson, R. A. '68/01
Caferio, S. C. '78/01
Cheng, B. '69/03
Crecca Jr., D. '47/01
Dean, J. E. '37/12
Fritts, T. W. '66/08
Gilde Jr., L. C. '47/09
Gordon Jr., J. F. '35/09
Holloway Jr., G. E., Dr. '31/10
Kramer, G. A. '31/07
Kunigonis, J. J. '71/06
Kuzsen, F. N. '37/08
Matey, M. A. '68/03
Mielach, B. F. '51/03
Moyer, T. T. '67/03
O. Gorman, K. E. '76/03
O'Neal Jr., W. G. '47/02
O'Neill, J. F. '62/08
Ort, G. H. '31/08
Pannucci, J. '68/10
Petty, R. K. '31/11
Pfeifer, D. M. '62/06
Senerchia MD, F. F. '31/12
Shafer, K. '58/10
Smith, L. T. '31/02
Somers, G. M. '49/08
Staves, S. G. '71/03
Van Dien, F. F. '58/06
Wheaton Jr., N. E. '31/12

Howell, R. C. '62/06
Monk, L. P. '60/10
Sartini, D. G. '61/06
Sipes, S. R., Ltmdr '63/07
Tellefson, R. W. '60/05

SLIPPERY ROCK
Coulson, S. C. '78/02
Depaul, L. J. '73/09

ST. JOHN'S
Smith, E. I. '32/10

STANFORD
Aw, F. T. '61/03
Bradley, G. E. '25/08
Campbell, K. W. '42/05
Culp, H. G. '49/08
Gard, J. J. '48/04
Hancock, J. W. '55/10
Hanson, D. R. '53/09
Hayes, E. B. '31/09
Hopwood, G. L. '64/02
Ingram, D. L. '51/10
Irvine, E. E. '47/02
Koepke, F. H. '39/05
Krawczuk, J. E. '58/04
Lahusen, G. '47/09
Martin, D. L. '47/12
McCourt, P. E. '56/10
Melvin, S. R. '40/07
Mosiman, F. W. '17/20
Phillipson, D. E. '61/08
Quick, T. C. '49/02
Richardson, E. H., Col. '29/03
Russell, J. D. '30/10
Sale, D. B. '47/05
Schmidt, T. F. '32/10
Schultz Jr., N. '35/12
Schwartz, N. M. '69/01
Stroud, W. M. '74/07
Sturgeon, J. A. '54/07
Styvester, P. '50/02
Winther, R. '29/11
Yost, F. M. '37/10

STEVENS TECH
Barry, A. C. '61/10
Biamonte, R. V. '42/07
Brooks, A. E. '65/04
Cancelosi, J. F. '67/09
Cassidy, T. F. '56/04
Cipolla, J. A. '39/01
Crabtree, J. '62/04
Crandall, S. H. '41/02
Crone, L. A. '26/09
Cummings, E. W. '63/03
Eckel, E. J. '50/05
Ermisch, A. R. '26/10
Forslund, D. C. '59/03
Gibbs, J. R. '42/07
Goldfarb, C. M. '75/07
Grouls, D. R. '61/07
Heydt, H. J. '70/08
Kaugerts, J. E., Dr. '60/03
Keowen, R. T. '28/05
Kleiber, C. E. '26/09
Kugler, A. N. '26/09
Lidstrom, J. A. '57/15
Mahan, R. A. '63/02
McCullough, W. A. '62/09
McKenzie, A. A. '59/04
McKimm, T. '61/06
Oliver, B. H. '26/12
Scheidt, G. P. '66/09
Schutte, W. G. '70/05
Skoblar, L. T. '66/06
Stemmle, R. W. '59/05
Stengel Jr., C. W. '40/09
Stockner, G. C. '62/08
Sundberg, E. B., Col. '29/09
Tamulevich, J. J. '69/09
Tobin, R. W. '26/09
Van Seggern, P. '63/05
Vikjaer, E. A. '78/01
Wohlmann, C. A. '63/10
Yanulevich, C. J. '77/04
Zwack, R. T. '26/09

SYRACUSE
Cusumano, J. F. '48/04
Hintermister, F. A. '51/04

SACRAMENTO STATE
Carston, A. J. '63/05

Annual Loyalty Fund



Providing more opportunities for sharing that special spirit of brotherhood is one of the goals of Alpha Sigma Phi. Here left to right, Grand Secretary **Richard Sanders, Missouri Valley '62**, Cleveland; Grand Councilor **Edmund A. Hamburger, N.Y. Polytechnic '45**, Los Angeles and Executive Secretary Emeritus **Ralph Burns, Ohio Wesleyan '32**, Delaware, Ohio. The brothers had gathered at the 1983 National Educational Conference at The Ohio State University, a program underwritten in part by your gift to the Annual Loyalty Fund drive. Your tax-deductible contributions help provide work toward forming more alumni groups that will bring brothers together.

Letteney, E. J. '25/02
Morton, P. S. '39/02
Oberfell, J. W. '49/05
O'Hara, A. P. '38/10
Serafini, A. '35/04
Snyder, L. J. '39/03
Thompson, W. P. '25/04
Truncer, J. J. '26/02
Wells, T. F. '57/06

TARKIO
Cox, D. J. '70/03
Kramer, K. A. '71/03
Zaremba, J. N. '72/01

TOLEDO
Allen, J. K. '41/04
Anderson, D. W. '65/05
Bensch, A. C. '65/08
Boor Jr., R. L. '55/11
Breymaier DDS, D. D. '47/04
Butler, J. A. '57/04
Dean, C. '42/04
Decker, R. G. '68/02
Escott, J. J. '68/02
Haden, J. W. '59/04
Hagele, R. G. '49/07
Heftrick, H. H. '37/09
Hutchinson, J. R. '62/07
Lange, W. H. '59/08
Layman, R. C. '74/03
Meyers, M. C. '53/02
Myers, J. S. '61/08
Myers, W. G. '47/07
Pfander, L. V. '49/02
Redlfsen, D. E. '75/06
Redmond, R. '65/11
Schwinn, J. P. '75/04
Stall, H. P., Dr. '61/04
Stevens, J. H. '75/02
Stoeckley, J. T. '46/05
Towse, R. '53/03
Traut, J. M. '74/03
Trepinski, C. P. '69/02
Zaenger, J. '56/04

TRI-STATE
Alfieri, J. E. '53/04
Bryan, R. R. '63/08
Budreau, M. A. '75/06
Buell, C. W. '37/04
Chadwick, L. J. '68/06
Day, R. J. '65/02
Dedrick, F. R. '66/05
Forbriger, W. S. '46/09
Franconi Jr., A. M. '67/09
Hollenbeck, P. B. '79/02
Jenner, D. A. '68/03
Joiner, T. H. '61/07
Jones, J. N. '57/10
Lewis, W. R. '60/08
Lienesch, G. W. '41/10
Maxel, J. M. '57/10
Opp, K. L. '64/03
Patino, G. '58/01
Peden, E. R. '55/02
Poweska, J. V. '37/02
Printz II, J. A. '73/01
Reichert, R. F. '64/04

Remington, J. W. '39/05
Ruegamer, P. S. '76/03
Samuelson, F. L. '42/03
Thomas, R. J. '71/04
White, N. O. '41/02

TUFTS
Abdu MD, L. '37/07
Anderson, H. A. '32/02
Blanchard Jr., N. H. '50/03
Boiger, L. J. '40/12
Dandrow Jr., R. V. '46/04
Johnson, J. '60/01
Klitzke, M. R. '51/08
Lori, F. J. '60/02
Miller, D. I. '65/06
Palmieri, J. F. '32/06
Parks, E. W. '47/08
Sarno, R. C. '64/05
Snow, L. V. '40/03
Stevens, D. E. '49/10
Thompson, R. W. '59/09
Virginski, W. B. '61/10
Waghorne, A. C. '32/02
Zamparelli, J. F. '47/08

TULANE
Burkett Jr., W. J. '71/06
Burton Jr., W. D. '67/07
Gardner, J. B. '63/02
Harper, E. W. '64/02
Krupsky, J. W. '68/09
Serold, R. W. '66/03
Szymurski, S. R. '68/04

WAGNER
Bishop, S. P. '63/06
Cranston, V. A. '52/09
Dietrich, S. W. '38/09
Goss, C. K. '63/02
Johnson, W. E. '40/08
Klinger, J. J., Mr. '35/03
Mayer, G. R. '35/03
Russo, T. J. '47/11
Schenk, L. C. '28/03
Schmidt Jr., H. F. '81/01
Schroeder, M. O., Col. '39/06
Troast, G. G. '71/05

WAKE FOREST
Armstrong, S. H. '72/02
Blanton, J. C. '42/04
Doulong, D. H. '76/02
Gray, P. J. '65/06
Gross, J. R. '53/03
Harrell Jr., V. H. '39/07
Hutchinson Jr., T. S. '68/04
Koether III, G. H. '68/12
Kornegay, H. '42/07
Lanford, C. G. '58/04
Lee, R. M. '74/02
Matthews, T. L., Rev. '72/06
May, J. B. '76/04
Moran, D. F. '77/03
Ryan, J. T. '59/06

Shaw, M. D. '66/04
Small, L. C. '51/07
Vine, J. G. '77/01

WASHINGTON
Kappel Jr., J. C. '58/06
Lange, G. H. '51/08
Mitchell, G. L. '61/10

WASHINGTON
Berg, R. L. '76/02
Burr, W. M. '23/11
Burrows, K. G. '46/10
Clearman, J. F. '56/04
Damen, M. T. '76/03
Dawes, J. R. '35/04
Ditmars, I. D. '25/12
Dobson, J. W. '26/10
Ellerbeck, K. H. '30/02
Erickson, A. J. '37/07
Everett, L. H. '70/05
Fletcher, J. H. '21/05
Foster, L. B. '32/02
Griffith, J. M. '28/05
Hunter, R. T. '28/07
Johnston, R. G. '63/05
Kirk, R. L. '41/01
Kuhn, S. G. '76/03
Landon, F. J. '35/07
Lotto, R. W. '35/02
Martin, D. E. '52/06
Martin, T. E. '51/06
Mazna, G. J. '20/02
McClarren, R. H. '25/12
McDermid, D. C. '24/09
Merrill, J. M. '34/06
Morrison, L. P. '71/04
Nelson Jr., W. H., Col. '34/05
Palena, J. F. '64/05
Patton, L. G. '48/05
Pool, J. T. '62/05
Ramsey, R. E. '53/03
Rapier, D. R. '69/07
Reid, B. E. '77/02
Rue, W. R. '24/12
Seeley, J. H. '51/02
Shively Jr., N. L. '75/03
Skoog, D. R. '45/05
Still, M. D., Capt '75/06
Stoner, W. L. '35/03
Strecker, R. B. '78/04
Strugar, G. R. '57/06
Therriault, T. M. '67/03
Turner, C. P. '26/08
Wasley, W. F. '64/10
Wood, W. R. '19/12
Young, W. E. '46/04

WAYNE STATE
Axel, H. C. '46/04
Blackwell, J. W. '47/02
Chance Jr., J. H. '40/10
Chase, R. R. '38/03
Craft, W. H. '48/03
Dill Jr., C. H. '50/02
Flees, W. L. '67/13
Gaberson, H. A., Dr. '51/14

Gardner, C. W. '51/08
Heller, J. A. '42/06
Hotchkiss, G. D. '56/03
Ingles, E. C. '49/02
Jones, L. E. '48/01
Kopka, D. F. '48/08
Langtry, E. R. '38/02
Leonard, J. K. '52/04
Lowe, C. E. '47/09
Mac Phee, W. D. '49/08
Monnett, R. L. '51/11
Schneider Jr., A. E. '56/04
Smith, L. A. '41/06
Watt, W. D. '67/03

WEST VIRGINIA
Corcoran, H. V. '32/03
Dardorff, W. A. '50/04
Devol, H. A. '31/04
Martin, W., Dr. '32/06

W. VA. WESLEYAN
Arnold, J. S. '36/13
Booth, H. W. '45/02
Brown, C. W. '43/10
Chapman, V. R. '33/12
Cody, N. F. '33/08
Gaston, W. R. '48/04
Hymes, C. M. '47/09
McCourt, E. H. '33/05
Simpson, W. W. '41/09

WESTMINSTER
Anderson, G. '71/09
Boak, J. D. '49/03
Bosse, T. K. '70/05
Burr, D. H. '76/02
Campbell, G. W., Dr. '41/03
Cheeseman, R. E. '46/02
Christofferson, J. R. '52/02
Delo, G. L. '75/06
Edwards, F. J. '70/06
French, T. A., Dr. '39/04
Front, C. M. '75/03
Garvey, K. J. '75/03
Graven, E. R. '75/04
Hall, J. D., Dr. '51/01
Hart, G. R., Dr. '43/09
Herchenroether, D. D. '77/03
Herrick, G. H. '52/05
Hildebrand, C. H. '44/11
Jamison, W., Dr. '39/10
Johnston, R. L. '71/05
Kegel, W. C. '48/08
Krampf, R. F., Dr. '61/01
Leech, E. J. '77/02
Luftner, B. H. '64/02
Manley, R. E. '41/05
Mansell, T. V. '39/01
McCullough, T. L. '57/10

Alpha Sig Necktie—You can proudly show you're a Sig with a distinctive Fraternity tie of dark blue with a full-color coat of arms woven throughout. The ties are woven in England and manufactured in New York by William Chelsea, Ltd. Ties are \$16.00 postpaid when ordered through Alpha Sigma Phi, 24 West William Street, Delaware, Ohio 43015.

Merwin, R. L. '51/03
Moran, P. L. '46/01
Muchow, W. P. '64/09
Musser, P. M., Rev. '42/05
Navarra, F. H. '48/08
Paine, F. V. '44/09
Schaefer, R. J. '51/06
Scheid Jr., J. E., Dr. '42/11
Schneckenburger, D. K. '73/06
Sheehan, J. P. '77/03
Sheehan Jr., R. M. '76/05
Smith, A. E. '49/03
Smith, H. W. '63/02
Sternbergh, G. A. '48/11
Toporcer, L. H., Dr. '54/06
Vogel, C. E. '49/06
Wagner, W. B. '52/11
Wavle III, J. A. '77/03

Robinson Jr., W. '77/02
Rossi, C. A. '77/02
Sharbaugh, C. R. '67/03
Shervin, V. E. '75/02
Sommerer, F. B. '79/01
Valent, T. F. '65/07

WISCONSIN
Dougherty, G. H. '30/05
Hilgendorf, H. '36/04
McGurn, W. E. '28/08
Perrin, H. L. '18/09
Pinther, H. O., Col. '16/09
Ruhsam, E. H. '17/07
Sisson, H. M. '24/11
Stevens, C. E. '33/09
Sullivan Jr., J. F. '21/08
Yegen Jr., P. '17/15

WOFFORD
Cooksey, J. L. '52/02
Horton, T. B. '40/02

YALE
Beckwith, S. A. '15/14
Bracken, T. E. '25/05
Downey, K. G. '24/08
Eames, E. H. '23/07
Good, P. S., Dr. '41/02
Holden, W. H. '15/05
Madison, W. N. '23/10
Murphy, A. K. '31/07
Norton, R. D. '17/04
Traub, H. J. '21/10
Withington, N. E. '26/09

THE TOMAHAWK

A publication of Alpha Sigma Phi Fall 1983
Postmaster: Change of address form No. 3579 should be sent to Alpha Sigma Phi, 24 West William Street, Delaware, Ohio 43015.

Address corrections: Please help us keep our addresses up to date. If the man named on label is no longer in college and not at this address, please advise us. Please tell us about any spelling errors or other mistakes. When moving, notify Headquarters as far in advance as possible.