

THE

FALL 1988

TOMAHAWK

O F A L P H A S I G M A P H I

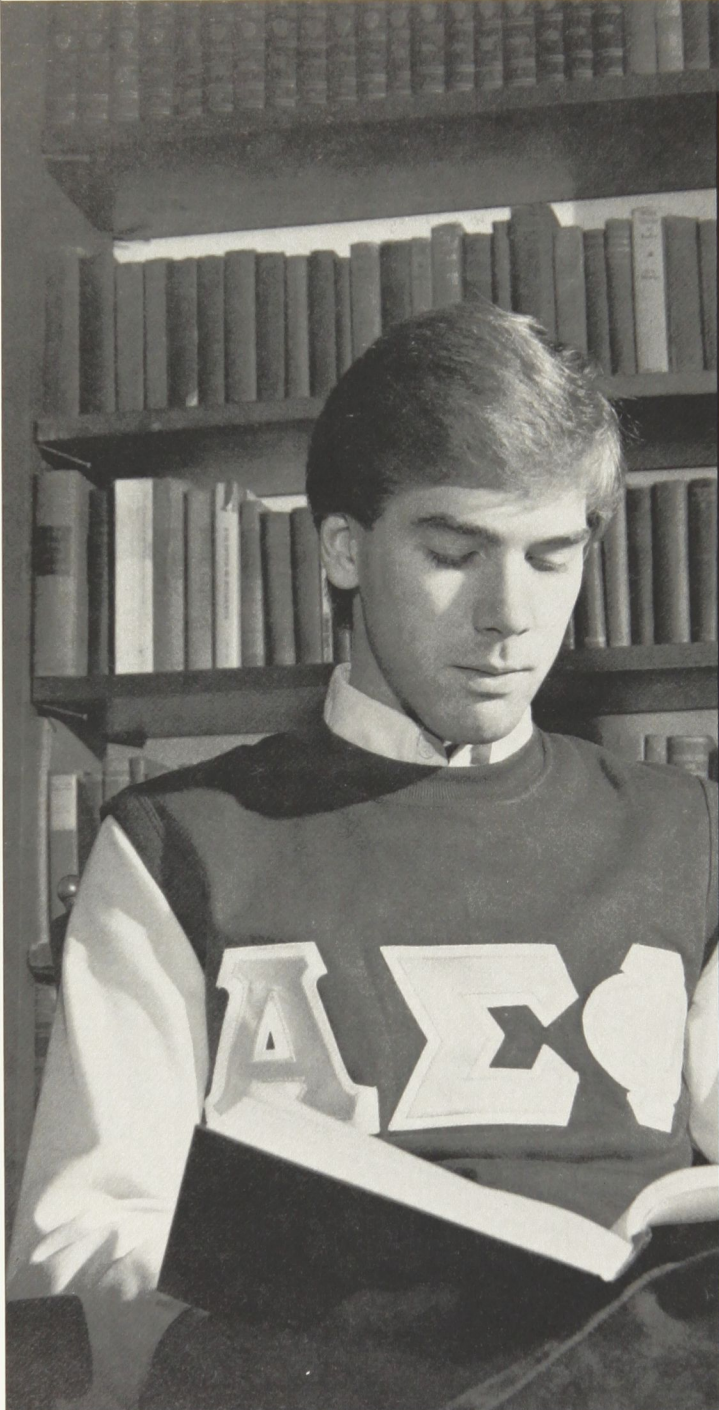


IN THIS
ISSUE:

- Annual Report

• Salute to "Mr. Alpha
Sigma Phi"

Vis Est Notissima



Welcome to your Fall "Annual Report" issue of *The Tomahawk* in our new magazine format. This is the first time in twelve years that our journal has appeared as a magazine. We hope you enjoy it. It is the Grand Council's plan to publish the "Annual Report" issue in this same format for years to come. Please let us know how you like it.

Our inaugural issue is dedicated to the man who served as Executive Secretary of Alpha Sigma Phi at the time the last magazine was published in 1976. This is of course "Mr. Alpha Sigma Phi," Ralph F. Burns, Ohio Wesleyan '32. Ralph's dedication to the "Old Gal" and commitment to our brotherhood are legendary. Not only did he serve gallantly as our Executive Secretary from 1936-76, he has continued to serve the Fraternity as a *volunteer* during the past twelve years—and he just keeps on giving. We are proud to salute Ralph in our cover story.

We send a big "thank you" to all our brothers who supported the Annual Loyalty Fund during 1987-88. Our annual roll of donors is included in this issue. The continued success story of Alpha Sigma Phi requires quality funding. More and more brothers are stepping forward to manifest their commitment to Alpha Sig excellence.

The 1987-88 year was another great one for Alpha Sigma Phi. Immediate Past Grand Senior President Robert A. Sandercox, Bethany '51, makes his final annual report to the brotherhood in this issue. You will be interested to read about the "Old Gal's" triumphs, challenges, and opportunities.

Excellence is what we seek. Thank you for your brotherhood and for doing all you can in helping Alpha Sigma Phi with our excellence mission.

Causa: Latet: Vis: Est: Notissima

The cause is hidden, the results well known.

Robert M. Sheehan, Jr.

Robert M. Sheehan, Jr.
Westminster '76
Executive Director and Editor

ON THE COVER:

"Mr. Alpha Sigma Phi" 8

For fifty-six years Ralph F. Burns has carried on the proud traditions of Alpha Sig excellence—and he is still going strong! Read all about our Executive Secretary Emeritus in our salute to "Mr. Alpha Sig."



ANNUAL REPORT:

Excellence Mission Continues 4

Immediate Past Grand Senior President **Robert A. Sandercox, Bethany '51** files his final report to the brotherhood on the 1987–88 year. The Alpha Sig tradition of pride has grown throughout the 1980s and we are enthusiastically looking forward to the 1990s.



FEATURE:

Leadership Conference '88 28

The 1988 "Commitment to Excellence" National Leadership Conference & Convention drew a record number 250 undergraduate leaders and alumni to four busy days of leadership seminars and convention activities. Nationally recognized speakers challenged the brotherhood to seek even greater successes.

**COMMITMENT TO
EXCELLENCE**

ΑΣΦ

INSIDE:

Over 450 brothers initiated in 1938 are celebrating their 50th anniversary of brotherhood, see **pages 14–15**. Special recognition is given brothers who have provided for the Alpha Sigma Phi Educational Foundation with bequests and other planned gifts on **pages 12–13**. Our annual salute to more than 3,000 brothers who contributed to the 1987–88 Annual Loyalty Fund fills **pages 16–27** with a special recognition to our "Leadership Club" donors on **pages 17–19**.



The **Tomahawk** is published quarterly by Alpha Sigma Phi Fraternity. Fifty cents a copy. Life subscriptions \$30.00. All remittances should be made payable to Alpha Sigma Phi Fraternity, 24 West William Street, Delaware, Ohio 43015 (614) 363-1911. Third class postage paid at Midland, MI. Produced by Maury Boyd & Associates, Inc., Indianapolis, Indiana.

Postmaster: Change of address form No. 3579 should be sent to Alpha Sigma Phi, 24 West William Street, Delaware, Ohio 43015.

THE ANNUAL REPORT

The Commitment To Excellence Continues

(Grand Senior President **Robert A. Sandercox, Bethany '51** opened the 1988 National Leadership Conference & Convention with this report on Alpha Sigma Phi's successes and challenges.)

Brothers in Alpha Sigma Phi. We like to sing "For he's an Alpha Sig . . . looks like all the others, but he's better than the rest . . ." We believe that to be an Alpha Sig is to be something special. Our convention theme suggests a word that is totally compatible with our self image: EXCELLENCE. Excellence describes for us a good Alpha Sig. In Latin, *ex cellere* means to rise high, to tower over the rest. Since the publication of John Gardner's book on the topic in 1961, excellence has become a byword in American life. It applies to all human enterprise: education, commerce, sports, art and, indeed, "fraternity." I am convinced that if our founding fathers were forming the Fraternity in 1988 one of the words of our ritual would be *kalos*, for excellence. Excellence would stand well with words such as Honor, Charity and Brotherly Love. So, I am delighted with the theme of our conference: "Commitment to Excellence." It's at the heart of "To Better The Man." It is the substance of our open motto, "*Causa Latet Vis Est Notissima*." It is the hope of the rising Phoenix.

Excellence is that kind of homespun weather reporting that gives Brother Willard Scott those high ratings on NBC's Today Show. It is the quality of work that Brother Vincent Price displays each week on his series, "Mystery," on public television. It is the excellence of Brother Tom Watson driving a long one toward the green at the U.S. Open. Excellence is what we read about in *Fortune* magazine de-



Robert A. Sandercox
Bethany '51
Grand Senior President, 1986-88

scribing the business acumen of Brother Warren Buffett at Berkshire Hathaway. And, when our Brother, the U.S. Surgeon General, Dr. C. Everett Koop, tries to give our nation a better understanding of the AIDS dilemma, or when we pick up a volume on theology by Reinhold Niebuhr, we are confronted by excellence. These Alpha Sigs testify that our concentration on excellence this week is right on target.

In the days we have together we shall be pondering the ways we can lead our chapters and our national fraternity to ever higher levels of excellence. Indeed, we will be committing ourselves to excellence as we seek "to better the man."

One thing I must remind, the road to excellence is not always a success story. A person who never attempts anything never fails. We often say "nothing ventured, nothing gained." Or, there's "no pain, no gain!" Failure can be a great teacher. Excellence is the result of a commitment to do our best and to learn from our mistakes and not to give up. You will recall Winston Churchill's advice as a very old man to the boys at his preparatory school. It was a very short speech. He said: "Never . . . Never . . . Never give up." And, so it is, excellence has as much to do with the striving as with the achievement. If you are not willing to try to better the man . . . to straighten out your chapter . . . to build our Fraternity . . . you will never know excellence. Excellence requires commitment; it requires that we try. Remember, only those who never try never fail. I implore you to take that risk.

Alas, my job tonight is not a treatise on excellence, but rather a report on your Fraternity . . . our beloved Alpha Sigma Phi. Eight years ago I was elected to the Grand Council. Two years ago I was honored to become Grand Senior President. Tonight I make an accounting to you. I wish to report briefly on your Fraternity's pursuit of excellence. It's not my story, but it belongs to all of us. It is the result of a lot of trying . . . and some failures. But I do believe it is a story of excellence.

Now, let me review some of our accomplishments.

Annual Report

This National Leadership Conference will reach a new high in attendance; perhaps 250 Alpha Sigs will have signed-in by Saturday. Eight years ago we hoped for 100. In 1986 . . . at no little expense . . . we expanded our annual meeting from three to four days. We began to emphasize leadership training every year; not just on the off years. When I was elected in 1986 at Ann Arbor there were 157 men present. Last year at Bethany we were 192 strong. Now we are 250. This means that our summer meetings—one of the most important things our national fraternity does—are having an ever increasing impact. At our

present growth rate we might anticipate 1,000 participants at our sesquicentennial convention in 1995. Perhaps that should be our goal.

I am proud that during my term as Grand Senior President we initiated the Alumni Volunteer Conference as a part of our annual gathering. Volunteerism is at the heart of our Fraternity. When Alpha Sigma Phi looks back fifty years from now I would not be surprised if they cite this component of our national activity as the most important initiative of the 1980s.

In addition to the increased attendance, the improved quality of the annual confer-

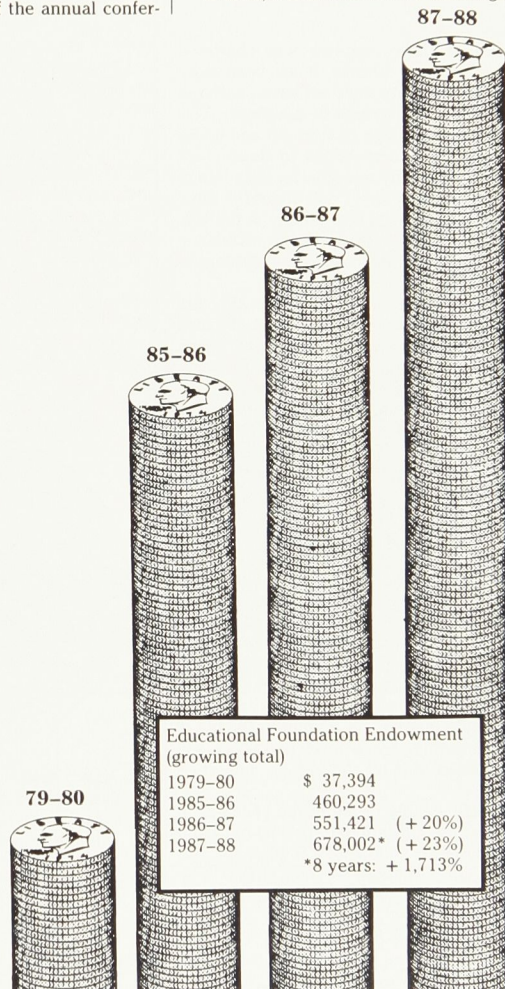
ence is impressive. When I look through the list of topics and presenters we have this year, I am very proud.

Expansion is always an important aspect of a national fraternity. Alpha Sigma Phi has welcomed four new chapters since our last convention:

- in 1986, Delta Mu at William Paterson College;
- in 1987, Delta Nu at Lock Haven State University;
- in 1988, Delta Omicron at Illinois State; and also
- in 1988, Delta Xi at SUNY-Plattsburgh.

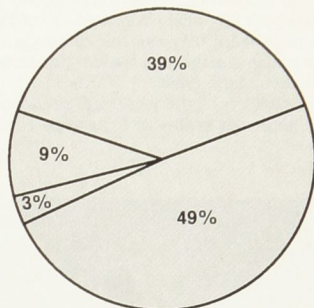
Chapter Statistics

	Pledges		Initiates		Chapter Membership		Initiates To Date
	1986-87	1987-88	1986-87	1987-88	1986-87	1987-88	
American	23	28	22	27	55	64	587
Atlantic Christian	1	5	0	6	21	17	369
Baldwin-Wallace	14	18	7	13	26	25	794
Bethany	23	16	0	17	55	55	653
Bowling Green	9	21	4	13	24	36	419
Cal-Berkeley	10	9	7	10	38	27	823
U.C.L.A.	15	8	7	10	33	27	555
Cornell	17	19	17	19	76	73	1203
Davis & Elkins	3	8	3	0	23	9	703
East Carolina	29	16	27	14	63	44	161
Hartwick	17	9	9	5	55	52	708
Illinois	40	40	28	31	91	103	1511
Illinois State	32	31	—	46	30	42	46
Illinois Tech	16	21	9	13	61	36	761
Indiana	26	27	28	24	59	59	479
Iowa State	23	13	18	11	55	44	722
Lawrence Tech	5	7	5	4	20	18	190
Lehigh	15	16	13	14	55	51	640
Lock Haven	18	19	—	58	44	50	57
Longwood	28	36	21	29	47	75	138
Loyola	12	7	2	12	25	28	326
Lycoming	12	16	5	10	40	47	338
Marietta	18	4	24	4	45	31	1463
Marshall	44	49	39	43	74	89	722
Miami	21	31	20	27	39	41	196
Michigan	11	6	17	5	34	31	976
Missouri	18	19	11	20	44	22	408
Missouri Valley	36	20	19	6	30	42	605
NJIT	19	20	12	19	30	46	552
UNCC	18	13	13	14	38	37	101
Ohio Northern	17	24	17	15	45	50	761
Ohio State	3	6	3	7	23	17	757
Oregon State	28	17	29	11	75	74	1000
Penn State	15	19	19	16	60	69	1343
Plattsburgh	12	32	—	61	45	62	62
Presbyterian	16	6	7	9	25	23	517
Purdue	39	39	35	37	99	75	1181
Radford	21	33	14	14	51	48	139
R.P.L.	13	16	11	12	32	33	593
Rio Grande	8	14	8	12	24	36	253
Rutgers	18	28	25	9	47	53	900
Slippery Rock	17	20	7	20	31	40	173
Stevens Tech	22	5	18	5	46	32	583
Stockton State	18	21	14	23	41	50	88
Toledo	21	13	19	10	53	43	957
Tri-State	6	7	—	4	23	14	991
Tufts	5	11	—	—	23	32	650
Tulane	0	2	0	2	15	10	271
Wake Forest	24	19	25	19	75	74	657
Washington	24	28	20	24	84	71	1611
Westminster	14	24	13	25	52	47	1228
Widener	22	31	16	26	41	49	545
William Paterson	17	21	51	20	56	60	72
Colonies							
Buffalo	—	19	—	—	—	19	—
Iowa	4	9	—	—	20	6	—



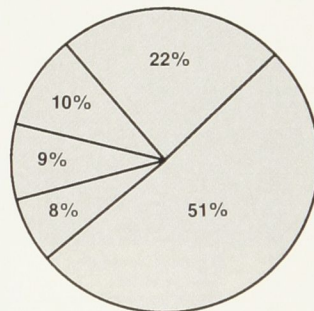
Annual Report

Fraternity Finances, Budget 1988-89



Income:

Undergraduate Dues and Fees: 49%
Annual Loyalty Fund: 39%
Endowment Grants: 9%
Miscellaneous: 3%



Expenses:

Chapter Services & Development: 51%
Administrative Services: 22%
The Tomahawk: 8%
Alumni Services & Development: 10%
Other: 9%

Each of these chapters was chartered with more than 50 men. It has been more than twenty years since we have chartered a chapter with that kind of manpower. This is an important sign of strength and bodes well for the future. Added to these chapters, we are ready to recharter Beta Iota at Tufts on September 17 and about the same time to recognize a new colony at the University of Buffalo. Thus, we are reclaiming two important campuses for our Fraternity in the east.

In eight years pledgings are up 25% and initiations are up 36%. Last year 1,886 men were actively affiliated with Alpha Sigma Phi. This is certainly the highest in twenty years and probably an all time record.

Equally important is the growth in the average chapter size: a testimony to grass roots strength. In 1980 the average chapter numbered 37 men; last year average chapter size was 44: a 19% increase.

Certainly, one of our great success stories is the increase in alumni support . . . and now I am talking about gifts; dollars that help pay for this conference among other things. Eight years ago the net of contributions (after expenses of solicitation) was \$25,688. In the year just passed we reached \$107,339 for a gain in eight years of 318%; 19% in the last two years. We believe that support will continue to grow as we increasingly involve our alumni in the life of the Fraternity. We believe that there will be a direct spin-off in chapter support as well.

We are equally proud of the endowment gifts to our Educational Foundation. Eight years ago our endowment totaled \$37,392. As of June 30, 1988 we had \$678,002 invested with pledges that will take us well over our first million dollars. This is a 1,713% rise in eight years; 47% in the last two years. These investments are provid-

ing an ever increasing stream of cash to support our extensive educational programs; including much of the cost of this annual conference. Perhaps we should goal ourselves for \$15 million by our 150th birthday in 1995. It's not impossible!

Staffing our national fraternity is certainly a major way to underscore commitment to excellence. Last year we added a Director of Chapter Services to our headquarters staff. The presence of Randy Lewis in that position emphasizes our commitment to serving the needs of our undergraduates and their chapters in the best way possible. We are able to produce higher quality conferences, province programs and expansion work because of Randy's efforts. Greater things lie ahead: programs in career development, substance abuse and scholarship are all issues we wish to address with better staffing. Our excellent staff makes Alpha Sigma Phi America's premier fraternity.

We have great momentum. We are blessed with outstanding alumni volunteers. We need to build on this strength and expand upon it at the chapter and the national level.

We are also blessed with outstanding undergraduate leaders and chapters. We are very proud of the many fine accomplishments of Alpha Sigs at chapters across the country. Their achievement reflects upon all of us. However, we are being challenged; challenged by our host universities, by the media, and by the courts. Basically, we are being challenged to live up to who and what we say we are in our publications and ritual. We say that our goal is to outperform the norm, but newspapers are full of accounts of hazing, alcohol abuse and poor academic and social performance. Fortunately, Alpha Sigma Phi did not appear in any of these headlines this

Annual Report

past year. But we have some acts to clean-up. We must try . . . even at the risk of failure . . . to move to excellence in all of our endeavors.

We can meet this challenge in two ways. First, by making a commitment to excellence—personally, and as a chapter. Commit yourself and your chapter to becoming the very best you can be. An exciting new program, "The Standards of Excellence," will be unveiled at this meeting. It includes materials to help you reach goals of excellence. This includes making a commitment to our Code of Conduct—to high values and ethical behavior.

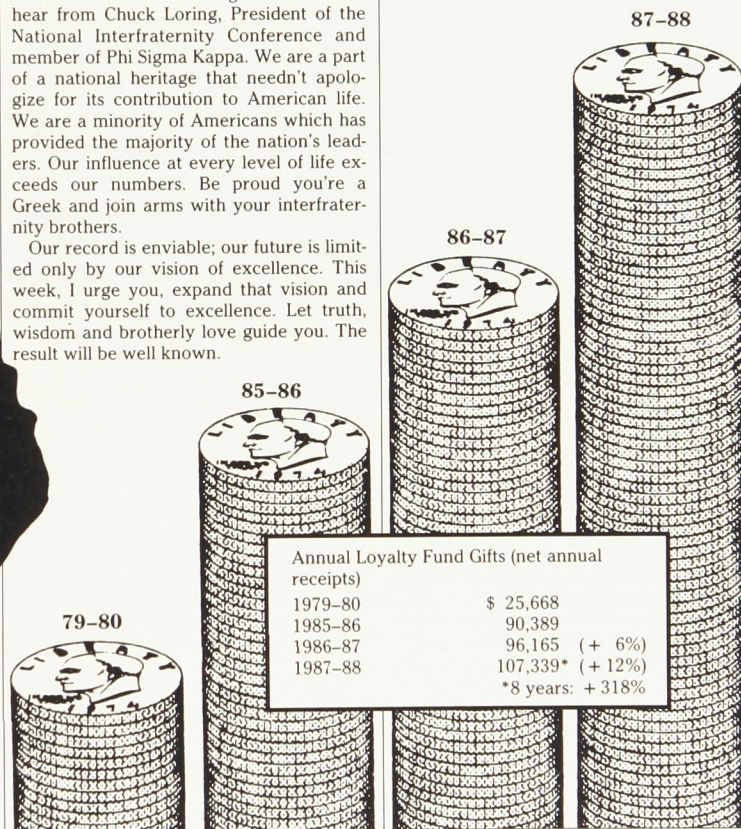
The second way to meet the challenge is to work on a commitment to excellence with the other fraternities on your campus. We have learned that nothing is as important as the system wherein an Alpha Sig chapter resides. We note that most often our best chapters are on campuses where there is strong interfraternalism and co-operation. Together fraternity men and women can provide the excellence that sets the pace on every campus. Later this week we will have the good fortune to hear from Chuck Loring, President of the National Interfraternity Conference and member of Phi Sigma Kappa. We are a part of a national heritage that needn't apologize for its contribution to American life. We are a minority of Americans which has provided the majority of the nation's leaders. Our influence at every level of life exceeds our numbers. Be proud you're a Greek and join arms with your interfraternity brothers.

Our record is enviable; our future is limited only by our vision of excellence. This week, I urge you, expand that vision and commit yourself to excellence. Let truth, wisdom and brotherly love guide you. The result will be well known.

Pledgings & Initiations

1979-80	1,446
1985-86	1,859
1986-87	1,720
1987-88	1,886*

*8 years: + 30%



Ralph F. Burns—

“MR. ALPHA SIGMA PHI”

“He’s a gentleman and a scholar with a heart beneath his vest. He looks like all the others, but he’s better than the rest. For he’s an Alpha Sig!”

He took his vows of brotherhood into Epsilon Chapter of Alpha Sigma Phi at Ohio Wesleyan University on February 21, 1932. For fifty-six years Ralph Frank Burns has been living the life of an Alpha Sig role model—and he’s still going strong today. It has been his dedication to our Fraternity’s high ideals and brotherhood that has earned him the title of “Mr. Alpha Sigma Phi.”

Ralph served as Epsilon Chapter’s President and Rush Chairman as an undergraduate, and earned a degree in social work for his 1935 graduation. His job in a social agency in Cleveland helped him carry out his natural desire to serve others. But, his keen interest in Alpha Sigma Phi did not go unnoticed by his supervisor, also an Alpha Sig from Ohio Wesleyan. When the call went out from the Fraternity national office in New York City that a new Executive Secretary was needed, Ralph was encouraged to interview for the job. The rest, as they say, is history. Brother Burns served as Executive Secretary of Alpha Sigma Phi from 1936 until his retirement in 1976.

“Forty years passed by pretty quickly, really,” Burns has said. “It seems like there was always some major challenge to deal with—depression, a war—something to keep you busy.” How true this is. During the first decade of the “Burns Era,” just as the Fraternity was learning how to deal

with the effects of The Great Depression, World War II broke out. The Fraternity had just completed the 1939 merger with Phi Pi Phi Fraternity and revamped its national constitution. Chapters had gathered great momentum, when all of a sudden most chapters were closed as brothers headed overseas for the war effort. With no membership dues coming

into the national office, Ralph picked up a daytime job at an insurance company, and wrote letters to alumni and brothers overseas by night.

In 1945, Americans returned to college and to their fraternities. Alpha Sigs found a familiar face ready to greet them home—Ralph's contact with brothers during the war years eased the transition back into operation. Ralph and Alpha Sigma Phi were back on the job full time. But changes were in the works. Ralph led the Fraternity through another merger in 1946, this time with Alpha Kappa Pi Fraternity. And by 1949 he and the national office had moved out of expensive New York City to the small college town, host of his alma mater, Delaware, Ohio. It was from these offices that for three more decades Ralph would make his treks to chapters from "coast to coast."

Through all the changes and challenges of his career Ralph has had an important constant—a loving family. Brothers attending national conventions over the years would find JoAnna Burns running the registration table, and perhaps their sons, Bruce and Jonathan, scurrying about. Alpha Sigma Phi was a family affair for the Burns—*and it still is today*. The eldest son, Bruce, joined Zeta Chapter at Ohio State in 1963, while the younger Jonathan accepted an appointment to West Point, Uncle Sam's fraternity. However, a special, secret invitation went out to Jonathan from the Grand Council in 1984 offering him the opportunity to become initiated at special ceremonies during the National Convention at the University of Illinois. No one was more surprised or proud to discover the identity of the special initiate than his father, seated in the front row of the initiation hall. So now all the Burns men are brothers, and Ralph is working on his crop of grandchildren.

Years of service, hard work, and persistent dedication to a cause are reasons enough to laud anyone's career. Yet, these superior qualities of Ralph Burns create just the framework of the man we call "Mr. Alpha Sigma Phi." Consider the following "Burnsian" characteristics:

Brotherhood. "When Ralph is talking with me I feel like I am the most important person in the world," many brothers report. "I met Ralph twenty-five years ago at a National Convention and when he saw me tonight at this alumni dinner he walked over and remembered everything about me like we had met yesterday—what a memory!" other brothers report. Some well spent time will provide the secret to any observer. If Will Rogers never met a man he didn't like, then Ralph Burns has never met an Alpha Sig he did not truly care



Ralph has come to know many famous Alpha Sigs well, such as Vincent Price, Yale '30, who was the featured speaker at the 1968 National Convention. Here Brother Price greets Ralph and other brothers during a visit to the National Headquarters.

about. When you are talking with Ralph *you are* the most important person in the world to him. How much easier that must make it for him to remember names over spans of decades—he doesn't remember names, he remembers brothers. Even the casual observer would also note that Ralph extends this privilege to others beyond the brotherhood. A deeply religious man, he considers brotherhood among all persons a natural credo.

Charity. Service to mankind is a top Alpha Sig ideal. While Ralph spent nearly his entire professional career in service to the "Old Gal" he did not let it stop there. He has been a Rotarian for many years and was named a "Paul Harris Fellow" by his local chapter. He has headed the communi-

ty United Way drive, and been a dedicated volunteer for his church. Upon his "professional" retirement from the Fraternity in 1976 he quickly signed up for volunteer work—which he continues today. He is the volunteer Secretary of the Fraternity's Educational Foundation, and has played key roles at recent national meetings and alumni gatherings. His retirement has also allowed him to increase his community activity, from which many local charities benefit, ranging from Meals on Wheels to the Red Cross. Aside from a heart attack in 1985, from which he quickly recovered, Ralph has experienced excellent health. At 76 years young he maintains the enthusiasm and pace that would tire men half his age, and he can usually be found using this

energy in service to others.

Gentleman. In days gone by, many people understood and appreciated the simple phrase, "He is a gentleman." Today, commonly used terms like "true professional" or "well-bred" are sad substitutes for the humble grace for which a true gentleman aspires. It includes all things that are good—like honesty, faith, and trust. It excludes all that is tawdry. Words defy a complete explanation of "gentleman" except to say that after spending time with Ralph, you find yourself walking away saying to yourself, "What a delightful gentleman."

All of this is not said to suggest that our Brother Ralph is perfect. He can apply the sharp "needle" in just the right way to get under one's skin. But, he makes sure that his target survives and always makes up for it later. And rarely does he give up the last word in any heated discussion.

There is no award that Ralph has not received, nor one ever created that truly attests to the legacy of love and brotherhood he has given Alpha Sigma Phi. He has received both of the Fraternity's highest awards, the Distinguished Merit Award in recognition of his professional accomplishments, and the Distinguished Service



Ralph's first love has always been working with undergraduate brothers, helping them collectively to build a better chapter and individually to be "better men."

Award in recognition of his dedication to the Fraternity. In 1984 the Grand Council named him an honorary "Third Founder" during the kickoff of the Educational Foundation's "Third Founding Endowment

Campaign." He has received the National Interfraternity Conference's highest commendation, The Gold Medal, and the Fraternity Executives Association's Distinguished Service Award.

Yet, Ralph's reaction to any of these honors is always filled with the humility of a servant, just as was his reaction to the standing ovation and cheers given him by the students at this August's National Leadership Conference & Convention—"Thank you," he said, "for letting me share this wonderful experience of brotherhood with you." But this is our opportunity to have the last word in this discussion, and all of

Alpha Sigma Phi says THANK YOU, Brother Burns, for your years of brotherly love—you are a shining example for each and every one of us to try to live up to.

(This article was written by Robert M. Sheehan, Jr., Westminster '76, Executive Director and Editor, 1981-present, and frequent Ralph Burns observer and admirer.)



Ralph and current Executive Director Robert M. Sheehan, Jr., Westminster '76, pose with the portrait that was unveiled and dedicated at the 1984 National Convention. The portrait now hangs in the National Headquarters honoring Ralph as a "Third Founder" of Alpha Sigma Phi.

Omega Chapter

(The TOMAHAWK does not assume responsibility for the accuracy of Omega listings. Information from various sources is printed as it is reported to the National Headquarters for record-keeping purposes. On-going efforts to locate brothers without mailable addresses often reveal names of those who have entered Omega. Some listings therefore are of brothers who have been deceased for some time, but are included for informational purposes and in tribute.)

"Tux" passes on to Omega

In the fall of 1917, a young man matriculated to the University of California, Berkeley from his home town of Orland, CA and accepted an invitation to join Nu Chapter of Alpha Sigma Phi. He took his vows of lifetime membership faithfully. Trusten P. "Tux" Wadsworth was actively involved with the San Francisco Bay Area Alumni Council during his active work career, and turned the Fraternity into his full time avocation/vocation after retirement. He took over editorship of the *Bay Area Newsletter* in 1974 when the council's membership was 70 and local alumni were still smarting over the closing of the Nu Chapter in 1968. By cranking out a newsletter on a monthly basis, written in his delightful, folksy manner, and arranging for continuous monthly Council meetings, "Tux" built the membership of the council up to 200 by the late 1970s.

He would not let the idea of reviving his beloved Nu Chapter die even though virtually all the other area alumni considered the chapter's reactivation to be an impossible dream. By cajoling local alumni and raising money to fund the effort, Tux's dream became a reality in 1982 when Nu was rechartered. He then took the effort one step further by leading the drive to purchase a house for the new chapter. This dream, too, was accomplished in the fall of 1983.

The Grand Council recognized Tux with the Delta Beta Xi Award in 1975 and with the Evvin C. Varner Distinguished Service Award in 1982. He passed into Omega Chapter on April 13, 1988 at the age of 88, and is survived by his "bride," Doris. His boundless energy and dedication to Alpha Sigma Phi serve as an example to us all.

ALPHA—Milton S. Cyatt '22, Brattleboro, VT; Stanley F. White '13, Tracy, CA. **BETA**—Halford B. Sanders '28, Bellflower, CA; George A. Thow '26, North Hollywood, CA. **GAMMA**—Donald A. Klein '62, Landsale, PA. **DELTA**—Paul S. Keever '14, Athens, OH; George Stan '41, Cincinnati, OH; Norman A. Thomas '20, Johnson City, TN. **EPSILON**—Oliver N. Johnson '17, Dayton, OH. **ZETA**—Randall L. Calhoun '28, Sebring, OH; Glenn R. Gierhart '43, Indianapolis, IN; John C. Hlusak '83, Cleveland, OH; Griff L. Lathrop '23, East Peoria, IL. **ETA**—Dr. Raymond E. Glos '22, Oxford, OH; Raymond E. Harroun '30, Atherton, CA; Myron C. Kabel '31, Urbana, IL; Oscar A. Kaiser '11, Laguna Hills, CA; William J. Lang '46, Spring, TX; F. Lyle Pfeiffer '22, Centralia, IL; Donald A. Snyder '22, Neenah, WI; William S. Thommessen '41, Redondo Beach, CA; John Thrithart '38, Memphis, TN; Walter S. Twinting '23, Edwards AFB, CA. **THETA**—Jose E. Armigo '22, Las Vegas, NV; Frank E. Byers '32, Lakewood, OH; Watson D. Harbaugh '25, Evanston, IL; Robert D. Patton '19, Rocky River, OH. **IOTA**—Robert L. Griffith, Esquire '25, Cumming, GA; E. Mark Wolf '27, Tempe, AZ. **KAPPA**—Charles A. Marshall '24, Janesville, WI; Carl J. Miller '22, Alexandria, VA; Silas L. Spengler '16, Madison, WI. **LAMBDA**—Thomas R. Dangelo '47, Massapequa, NY; Francis K. Scovil '18, Kew Gardens, NY. **MU**—Duncan W. Brickell '17, Santa Barbara, CA; George A. Kirkpatrick '29, Sherwood, OR; Fred D. Martin '22, Seattle, WA; John J. McHugh '20, Seattle, WA; Michael J. Paysee '67, Pasco, WA. **NU**—Herbert H. Mensing '42, San Francisco, CA; Trusten P. Wadsworth '17, Berkeley, CA; Fred D. Witzel '28, Menlo Park, CA. **XI**—Dr. Byron W. Bailey '28, Auburn, CA; Irwin W. Jetter '22, Thousand Oaks, CA; Gilbert L. Koza '33, Clarkson, NE; Edgar E. Struve '32, Fullerton, CA. **OMICRON**—Charles F. Christmann, Jr. '26, Exton, PA; Paul J. Cupp '21, Bryn Mawr, PA; Mark H. Kennedy '19, St. Clairsville, OH; Charles L. White '24, Sea Girt, NJ. **PI**—Wilfred M. Hall '15, Boston, MA. **RHO**—J. Philo Nelson '20, Oakland, CA. **TAU**—Hugh R. Hollebeak '24, San Marino, CA. **UPSILON**—Ernest Q. Chapman '31, Harrisburg, PA; James M. Donovan '19, Worthville, PA; J. Russell Keim '30, Pottstown, PA; Edward Podehl '33, Plainsville, PA; William P. Rierson '59, Kailua Kona, HI; James Uber '38, Sun Lakes, AZ. **PHI**—E. L. Henderson '26, Ehrhardt, SC; Russell R. Wood '25, Benton, AR. **PSI**—Vincent F. Buttrivich '21, Portland, OR; James H. McNeely '24, Bend, OR. **ALPHA ALPHA**—David E. Fields '23, Tulsa, OK; John R. Runyan '32, St. Joseph, MI. **ALPHA BETA**—Roy G. Green '38, Salem, OR;

Leo G. Nopoulos '38, Dexter, IA. **ALPHA GAMMA**—Samuel P. Crago '26, Mesa, AZ; Roland E. Land '30, Austin, TX; Karl F. Schauwecker '30, Downers Grove, IL. **ALPHA DELTA**—Burton D. Guild '34, Essex Junction, VT. **ALPHA EPSILON**—E. W. Hrabchak '36, Milford, CT; Robert G. Withington '32, Bristol VT. **ALPHA ZETA**—Ralph C. Fielden '27, Los Angeles, CA; Jack S. Whittaker '32, Monterey Park, CA. **ALPHA ETA**—Vincil Harmon '30, Hermann, MO. **ALPHA THETA**—Elmer A. Ernst '41, Springdale, CT; Robert L. Hall '39; David Maitland '49, Canton, MA; Roger D. Walsh '41, St. Louis, MO; Duthiel Frederick Zeiser '31, Webster Groves, MO. **ALPHA IOTA**—Earl E. Bradley '30, Florence, AL. **ALPHA KAPPA**—Dana L. Farnsworth, '32, Belmont, MA; Juluis Scutari '60, Wethersfield, CT; John S. Sibray '53, Charleston WV. **ALPHA MU**—Homer T. Yoder '39, Cleveland, OH. **ALPHA NU**—Bernie Kessler '47, Meadville, PA; Richard Wharton '48, Sewickley, PA. **ALPHA OMICRON**—C. J. Korbecki '47, St. Louis, MO. **ALPHA PI**—Donald G. Maddy '49, Middletown, IN; Joseph E. Noel '40, Warsaw, IN; Lee Oldenburg '50, S. Acton, MA; Scott Starling '79, Fairfield, TX; Dale Vanguntan '43, Indianapolis, IN. **ALPHA RHO**—Herman Hoffmann '38; Henry Pruner '39; Walter E. Skinner '39. **ALPHA SIGMA**—John W. Kern '26, Victoria, TX; William G. Krauel '47, Fanwood, NJ. **ALPHA TAU**—Charles Bogert '36, Lavallette, NJ; Donald H. Castle '26, Palm Harbor, FL; John H. Daley '28. **ALPHA PSI**—Melvin A. Bennett '29, Myrtle Beach, SC; Stuart Campbell, Jr. '34, Wytheville, VA. **BETA GAMMA**—Earl H. Epling '29, West Palm Beach, FL; Raymond L. Henthorne '33, St. Louis, MO; Arthur J. Markley '29, North Ridgeville, OH; Cedric N. Snedegar '31, Frankford, WV. **BETA DELTA**—George L. Garner '32, Huntington, WV; John A. Holmes '82, Charleston, WV. **BETA IOTA**—Theodore R. Higgins '21, Epsom, NH; Edward M. Quinn '38, Lowell, MA. **BETA MU**—Ben R. Richardson '47. **BETA OMICRON**—William C. Overton '35, Long Beach, CA; Robert E. Robinson '50, Brownsburg, IN. **BETA RHO**—Thomas A. Brahier '84, Fremont, OH. **BETA CHI**—Floyd Beach '55; Bernard Gallagher '57. **BETA TAU**—Joseph J. Tigue '38, Troy, MI. **GAMMA BETA**—Milus W. Bonker '42, Manly, IA. **GAMMA GAMMA**—John R. Alusik '50, Stratford, CT; Christopher O. Shea '65, Hartford, CT. **GAMMA DELTA**—George N. Hudson '63, Dover, DE. **GAMMA XI**—John F. Gimblin III '62, Burlington, MA. **GAMMA OMICRON**—K. Terrell Brown '65, Ballwin, MO. **GAMMA PI**—Gregory Vilsack '64, Verona, PA.

Educational Foundation

Past Grand Senior President,

Trustee Glos passes away

Dr. Raymond E. Glos, Illinois '22, who served as Grand Senior President of Alpha Sigma Phi from 1966-68, passed into Omega Chapter on August 26, 1988. After graduating from the University of Illinois in 1926, and teaching there for a year, Brother Glos joined the faculty at Miami University (Ohio). He completed his doctorate at Ohio State University while teaching at Miami. In 1939 he became the Dean of Miami's School of Business Administration, a position which he held until his retirement in 1969. He is the co-author of what is still one of the top-selling business textbooks in the country, "Business: Its Nature—An Introduction." In recent years the university has named a professorship and a Scholar-Leader Room in his honor.

Brother Glos served on the Grand Council from 1960-68, and was a Trustee of the Alpha Sigma Phi Educational Foundation from 1966-80. He served as national Scholarship Chairman from 1956-58 and received the Delta Beta Xi Award in 1956. In 1971 he received the Evin C. Varner Distinguished Service Award. Brother Glos exemplified the life of an Alpha Sig scholar and gentleman.



*Dr. Raymond E. Glos
Illinois '22*

Commons Trust leaves \$31,000

A trust established by **John P. Commons, Colorado '18**, has transferred a residual interest bequest to the Alpha Sigma Phi Educational Foundation of \$31,000. Brother Commons passed into Omega Chapter in 1983 and left the Educational Foundation an outright \$20,000 bequest at that time. "Although I am not a wealthy man," stated Brother Commons at the time he arranged the bequest, "this allows me the opportunity to give something back to the Fraternity in a very meaningful way when I am no longer in need of the means." At the same time, Brother Commons arranged for the Foundation to benefit from a trust he had set up. Now that the conditions of the trust have been met, the Foundation has received the second bequest.

Brother Commons' gifts, totalling \$51,000, have been invested in the Educational Foundation's Endowment where they will produce investment income annually which will support the educational and leadership development activities of Alpha Sigma Phi in perpetuity. Gifts of this type help to assure that the quality of Alpha Sigma Phi will be guaranteed for generations of brothers to come. Brothers interested in more information on bequests or other deferred giving opportunities to the Educational Foundation should fill out the form on p. 13 and send it to the National Headquarters.

Trustees establish Hanna Fund

The Trustees of the Alpha Sigma Phi Educational Foundation have honored **Warren L. Hanna, Minnesota '18, Omega '87** by establishing the "Warren L. Hanna Fund" as a part of the Foundation's permanent endowment. The "named fund" was set at a value of \$51,000 as of July 1, 1988, the beginning of the most recent fiscal year. This reflects the amount that Brother Hanna gave to the Foundation as his gift to The Third Founding Endowment Campaign in 1984.

"The Warren L. Hanna Fund is now an identifiable part of the Foundation's permanent endowment," said **Dr. Robert E. Miller, Connecticut '49**, Chairman of the Foundation Trustees. "Every year the amount of Brother Hanna's fund, as reflected in our annual report, will grow through investment growth. His meaningful contribution will be there for all to see and for future generations to appreciate. The relative meaningfulness of his fund will remain protected because of the in-



*Warren L. Hanna
Minnesota '18*

vestment growth it will experience." Alumni may set up their own "named fund" within the Foundation's permanent endowment by making outright gifts during their lifetime of \$10,000 or more, or by directing that such a fund in at least that amount be set up through their will or other deferred giving instrument. For more information contact the National Headquarters or return the form on page 13.

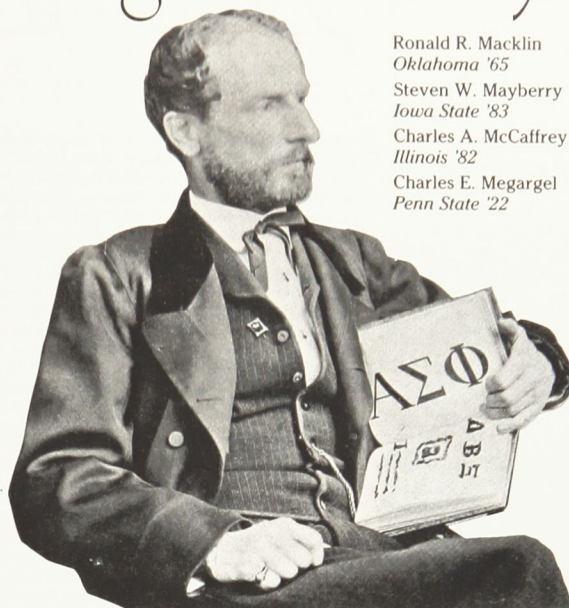
Educational Foundation

The Manigault Society

Following is our annual cumulative listing of all brothers qualifying for "The Manigault Society." These brothers have listed the Alpha Sigma Phi Educational Foundation as a beneficiary in their will, trust, insurance policy, or other deferred giving instrument. Join today and receive your certificate recognizing you as a member! Your name will then annually appear in this listing every fall. To join, fill out and return the slip below to the National Headquarters.

Stuart W. Anderson
Eastern Michigan '73
Howard E. Beebout
Marietta '21
Elbridge J. Best
California '13
Louis R. Black
Illinois '27
Francis J. Boland
Cornell '42
Ralph F. Burns
Ohio Wesleyan '32
John R. Chaney
Indiana '67
David R. Claussen
Iowa State '84
John P. Commons
Colorado '18
Geoffrey M. Connell
Michigan '82
Kevin W. Davis
Bethany '70
Timm W. Davis
Iowa State '79

Richard A. Dexter
Oregon State '60
Ronald W. Dollens
Purdue '65
Dallas L. Donnan
Illinois '21
J. Edward Drew
Cal-Berkeley '16
William D. Edwards, Jr.
Bowling Green '65
William H. Fenn
RPI '73
James V. Fitzpatrick
Illinois Tech '47
Kevin J. Garvey
Westminster '75
Richard R. Gibbs
Oklahoma '51
John B. Gibson, Jr.
Indiana '85
Raymond E. Glos
Illinois '22
Perry M. Goth
Oklahoma '66



Edmund A. Hamburger
Polytechnic '45
Emmet B. Hayes
Stanford '31
John R. Hoyt
UCLA '29
Ralph S. Hudson
Yale '15
Brian W. Jump
Indiana '77

Howard J. Kleinoeder
Washington '35
Christopher J. Koch
Indiana '79
Frank J. Krebs
Mt. Union '29
Randall S. Lewis
Oregon State '81
A. W. Lubbers
Lehigh '31

Ronald R. Maklin
Oklahoma '65
Steven W. Mayberry
Iowa State '83
Charles A. McCaffrey
Illinois '82
Charles E. Megargel
Penn State '22

Dr. Dennis R. Parks
Baldwin-Wallace '72
Lyndon B. Payne
Rio Grande '85
Larry D. Philippi
Bowling Green '76
Robert A. Sandercox
Bethany '51
Steven S. Sanderson
Michigan '23
James D. Schrader
Purdue '64
Jeffrey P. Schwind
Toledo '75
John A. Selig
Illinois '31
Robert M. Sheehan, Jr.
Westminster '76
John O. Swenson
Missouri Valley '65
Peter L. Tourtellot
American '57
William F. Treadwell
Charleston '67
Evin C. Varner
Presbyterian '58
Charles J. Vohs
Penn State '75
Frank L. Wahman
Indiana '73
Alfred B. Wise
Baldwin-Wallace '43
Steven V. Zizzo
Illinois '84

NEWS FOR THE TOMAHAWK—ANYTHING NEW?? YOU DON'T SAY . . .

Name _____ Date _____
(first) (last) Chapter _____

Home Address: _____ Bus. Address: _____

Phone: () _____ Phone: () _____

☐ This is a new address. ☐ This is a new address.

I prefer that my fraternity mail be sent to my home/business (circle one) address.

☐ I have personal or career news for *The Tomahawk* and have filled out below.

☐ Please send me a complimentary copy of the brochure "Planned Giving Opportunities for Alpha Sigma Phi Excellence."

☐ I would like information about providing for myself and others through a life income gift to Alpha Sigma Phi.

☐ Please send me information on programs which currently need endowment funding.

☐ I have made provisions for Alpha Sigma Phi in my will, life insurance policy, or trust. Please send me my certificate as a new member of "The Manigault Society."

Newsworthy items (include personal news, civic activities, fraternity activities, news about other brothers): _____

RETURN TO: Alpha Sigma Phi Fraternity/24 W. William St./Delaware, OH 43015

50 YEAR

Fifty years have passed quickly for the initiation class of 1938. The following brothers have each celebrated their Golden Anniversary of membership in Alpha Sigma Phi. Each has been presented with a special recognition certificate from the Grand Council in recognition of their 50 years of dedicated brotherhood. Congratulations, brothers!!!



Robert L. Housam, Colorado '38 was the President of the Cincinnati Reds from 1967-78 and returned from 1983-85 to build the Reds into a contender again. He received the Alpha Sigma Phi Distinguished Award in 1974.

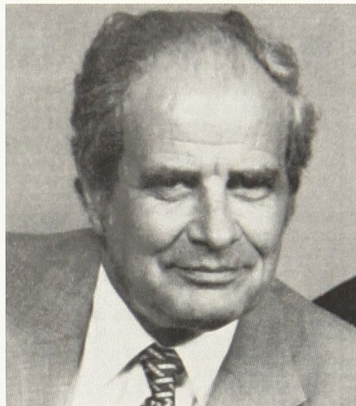


During the late 30's the studious looking Charles W. Aldridge, Michigan '38 was known as "Doc" by his Theta brothers. The nickname stuck—"Doc" is now a physician practicing in Grand Rapids, Michigan.

MEMBER-AT-LARGE—Walter T. Kuhlmeier, Rancho Mirage, CA. **ALABAMA**—William E. Stanton, Arlington, VA; Robert J. James, Houston, TX. **BETHANY**—Paul W. Deafenbaugh, Beltsville, MD; Robert L. Martin, Wheeling, WV. **CALIFORNIA**—George L. Bolitho, Whittier, CA; Raymond E. Horan Jr., Little Rock, AR; Clark W. Pinkham, Los Angeles, CA; Karl W. Schmidt, Madison, NJ; Alfred E. Stendahl, North Hollywood, CA; Weldon L. Richards, Walnut Creek, CA. **U.C.L.A.**—Walter F. Allington, Solana Beach, CA; Richard S. Drake, Los Angeles, CA; Donald L. Flint, Solana Beach, CA; William K. Johnke, Uniondale, NY; Stanley Klausner, San Pedro, CA. **COLORADO**—Robert B. Alexander, Dayton, OH; Wayne E. Fuller, El Paso, TX; Warren Gallagher, Lincoln, IL; Earl F. Harter, Lancaster, PA; Robert L. Howsam, Glenwood Springs, CO. **COLUMBIA**—William Bertsche, Croton-on-Hudson, NY; Dr. James J. Finnerty, Bellport, NY; Vincent F. McLarney, New Providence, NJ; Benjamin A. Tator, Miami FL. **CORNELL**—Robert T. Bronkie, Williamsville, NY; Sam K. Brown Jr., Arlington, VA; Joseph M. Daley, Mountain Lakes, NJ; Frederick Fahnoe, Kinnelon, NJ; Jack R. Francis, Levittown, NY; Joseph A. Gioia, Rochester, NY; Gilbert B. Jaeger, Camden, ME; William A. Potts MD, Lexington, SC; William K. Stamets Jr., Greendale, WI; James A. Young Jr., Clermont, FL; Robert L. Zouck, Cruz Bay, VI. **FRANKLIN & MARSHALL**—Donald E. Barnett, Lancaster, PA; John H. Hershey, Aiken, SC; William J. McCoy, Plainfield, NJ; J. William McIntyre, Esq., Bedford, PA; George E. Raab, Doylestown, PA; Herbert C. Schmutz, Basking Ridge, NJ. **HARTWICK**—Herbert P. Beardsley, Worcester, NY; Norman H. Burton, Oneida, NY; William S. Fisher, Buffalo, NY; Raymond J. Johnson, Perry, NY; Robert A. Reynolds, Dunedin, FL; Wilson J. Worman, Syracuse, NY. **ILLINOIS**—K. Slade Austin, Washburn, WI; Louis G. Brown, Rockport, IL; Robert H. Driggs, Ridgecrest, CA; Edwin H. Foreman, Heber Springs, AR; H. Kenneth Foute, Elmwood Park, IL; Roland J. Kelsey, Bonita Springs, FL; Fred M. Kilker, Fullerton, CA; Octavio A. Mendez, Panama City, Panama; C. Douglas Monsson, Flossmoor, IL; John R. Mueller, Skokie, IL; Loren E. Popkins, Morrison, IL; Dr. Carl E. Pruett, McLean, VA; Theo V. Purvin, Hinsdale, IL; Fred E. Roedger, Cleveland Heights, OH; M. Rayman Scamehorn, Vero Beach, FL; James Shinkoff, Rockville, MD; John Thrithart, Memphis, TN; Walter W. Wolf, Alpena, MI. **IOWA**—Frank M. Baker, Houston, TX; Clive V. Clark, Rockwell City, IA; Paul M. Lee, Boulder City, NV; Herbert A. Lubke, San Diego, CA; Stanley M. McClean, Winthrop Harbor, IL; Charles D. Meyer, San Francisco, CA; Fred E. Mumm, Cedar Rapids, IA; Maj. Donald F. Neider, St. Leon, West Germany; J. Harold Sears, Des Moines, IA; Gaylord D. Ward, Baker, OR; James H. Wilson, Solon, IA. **IOWA STATE**—Charles W. Conrose, Webster, NY; Bert C. Hanson, Pocatohas, IA; William F. Oertel, Mason City, IA; Charles S. Ritts, Park Ridge, IL; Leland H. Woodburn, Green Valley, AZ. **KENTUCKY**—Lawrence T. Corbin, Oak Ridge, TN; Thos F. Rees, Schenectady, NY; Raymond W. Schlachter, Bradley, IL. **LEHIGH**—John D. Betz, Gwynedd, PA; Richard M. Shepherd, Wilmington, DE; Robert A. Wilson, Cranford, NJ. **MARIETTA**—Henry W. Adrian, Hartford, CT; R. Neil Christy, Marietta, OH; Richard D. Day, Bethesda, MD; William E. Ross, Marietta, OH; Cecil E. Swartz, Deep River, CT. **MARSHALL**—John F. Sinnott, Newton, NC; Clifford W. Slater, Williamson, WV. **MASSACHUSETTS**—Richard B. Hayward, Salem, OR; Howard F. King, Slatersville, RI; John C. Miller, Charlton, MA; Paul N. Porcopio, Amherst, MA; Stanley C. Reed, Halifax, MA; Evi C. Scholz, Dover Plains, NY. **MICHIGAN**—Charles W. Aldridge, Grand Rapids, MI; Gordon H. Arnold, Reseda, CA; Keith R. Bronson, Channel Islands, CA; Frank J. Feely Jr., Center Harbor, NH; George H. Gangwere Jr., Kansas City, MO; William B. Hall, Palm City, FL; Walter E. Hobert, Newhall, CA; Ralph H. Schwarzkopf, Arden, NC; George H. Sherman, Issaquah, WA; Everett R. Trebilcock, E. Lansing, MI; Vincent D. Valek, Holly, MI; Leonard R. West Sr., Bloomfield Heights, MI; George S. Whitman, Northridge, CA; James S. Wilkie, Plandome, NY. **MIDDLEBURY**—Roland W. Anderson, Alexandria, VA; Ames T. Barber, Glens Falls, NY; James H. Cassidy, Bethesda, MD; Charles M. DeLaverne, Salt Point, NY; John J. Eagan, Waterbury Center, VT; George A. Eastland, Spring Valley, CA; Robert S. Gerrig, Yonkers, NY; Karl L. Hofmann, Liverpool, NY; John C. Johnson, Worcester, MA; Robert L. Johnson, Wenham, MA; W. D. Knight, Berkeley, CA; Edgar F. Sprague, La Mesa, CA; John W. Van Tuyl, Arlington, VA. **MINNESOTA**—Homer L. Hussey, Sun City, AZ. **MISSOURI**—Joseph L. Bellanca, Gowanda, NY; Eugene Browning, Independence, MO; Marshall J. Dugger, Afton, MO; Gregory A. Dunn, Dan Rafael, CA; Merrill R. Gassert, Flushing, NY; Charles Leroy, St. Louis, MO; Harvey L. Patton, Wheaton, IL. **MOUNT UNION**—Malcolm M. Kienle, Canton, OH. **NEBRASKA**—Hon. Walter H. Cropper, Omaha, NE; Reuben H. Denning, Richardson, TX; John H. Gayer, Lakewood, CO; Robert F. May, Denver, CO; William A. Moores, Mesa, AZ; Dale C. Tinstman, Lincoln, NE. **N.J.I.T.**—Edmond S. Bauer, Kirkwood, MO; Raymond F. Hall, San Diego, CA; Henry O. Meyer, Leonia, NJ; Donald F. Smith, Pt. Pleasant Beach, NJ; Wilbert H. Zuest, Toledo, OH. **N.Y. POLYTECHNIC**—Carl G. Braun, Belvidere, NJ; John C. Carlson, Severn, VA; William A. Hunter, Danvers, MA; Alvar Johanson, Plainville, NY; John Lerstang, Lake Worth, FL; Walter Messner, Anaheim, CA; Edward J. Paprocki, Hollis, NY; D. Drayton Schwartz, Wantagh, NY; George M. Wambold, Staten Island, NY. **N.C. STATE**—George T. Braswell, Marietta, GA; W. B. Coward, Raleigh, NC. **OHIO STATE**—Robert M. Bailey DVM, Elide, OH; Charles C. Hamilton, W. Middlesex, PA; Jack F. Hamilton, Columbus, OH. **OHIO WESLEYAN**—John A. Akerstrom, Macedonia, OH; John Ohly Carlson, New Philadelphia, OH; Dr. Carter F. Cort, Vero

BROTHERS

Beach, FL; Robert H. Fitts, Naples, FL; James C. Houston, Ft. Lauderdale, FL; Victor J. Kehrer, Lynchburg, VA; William G. Shaw, Annandale, VA. **OKLAHOMA**—Clyde J. Stephens, Atoka, OK. **OREGON STATE**—C. Lloyd Anderson, Corvallis, OR; Norman H. Cutshall PhD, Oak Ridge, TN; Malcolm J. Johnson PhD, Redmond, OR; Ronald T. Miller, Portland, OR; Leonard Patterson, Portland, OR; Frank J. Seberg, Bellevue, WA; Robert M. Sturges, Troutdale, OR; Roy H. Thorson, Sierra Madre, CA. **PENN**—Robert S. Bargar, Jamestown, NY; Winston Dorrell, Jacksonville, FL; John H. Fenstormacher, New York, NY; David T. Hopper, Wilmet Flat, NH; Bernard F. Jameson, Modesto, CA; John L. Marsh, New York, NY; John D. Place Jr., Cortland, NY; Philip Stauderman, Cranbury, NJ; Neil P. Stauffer, N. Palm Beach, FL; Alfred R. Valentine, E. Williston, NY; Carl E. Wagner Jr., Baltimore, MD; Harold M. Weaver, London, England; John M. Wendell, Palm Harbor, FL; James W. Wilsie, South Portland, ME. **PENN STATE**—John A. Dornsife, Springfield, PA; Richard H. Hall, Franklin, TN; Charles P. Hoffman, Macungie, PA; Robert C. Keim, St. Marys, PA; John R. Miller, Millheim, PA; George W. Sandell, Dallas, TX; Milton R. Sheen Jr., Petersburg, FL; Archie C. Tanner, Great Bend, PA. **RUTGERS**—William H. Aaroe, St. Albans, WV; George P. Conlon, South Amboy, NJ; Arnold R. DeAngelis, Reno, NV; Kenneth H. Deith, Indian Harbor Beach, FL; Ransom F. Galdwin Jr., Jupiter, FL; Kenneth H. Lowery, Round Hill, VA; Erwin P. Perkins, Belleville, NJ; Raymond A. Quad, Phoenix, AZ; Clifford R. Radus, San Rafael, CA; George L. Vandillen, Lakehurst, NJ. **STANFORD**—Nat Brown, Stockton, CA; Duane J. Gerry, San Diego, CA; Charles J. Kellogg, San Mateo, CA; Allan H. Kittell, Portland, OR; John M. Lindsay, Hartland, WI; Kenneth W. Roberts, Menlo Park, CA; Donald L. Ruggles, Camarillo, CA; George F. Schnack, Honolulu, HI; Robert S. Worthington, Santa Rosa, CA; James R. Wood, Falls Church, VA. **STEVENS TECH**—Henry J. Barchi, Yardley, PA; Louis G. Beffa Jr., Morristown, NJ; Hendrik B. Douwes, Whiting, NJ; John J. English, Rutherford, NJ; Alfred W. Fielding, Allendale, NJ; John D. Jones, Asbury Park, NJ; Maurice L. Noyer, Westhampton Beach, NY; Frank K. Quirolo, Las Cruces, NM; Daniel M. Pater Jr., Keystone Heights, FL. **SYRACUSE**—Bernard F. Eames, West Haverhill, MA; Charles E. Holly, Newton, MA; Charles A. Liguori, Olean, NY; Frank R. Liguori, Ithaca, NY; S. W. Merrick, Denver, CO; Alfred P. Ohara, Patterson, NY. **TRI-STATE**—Max F. Alters, Bellefonte, PA; Victor A. Camfield, Huntington Beach, CA; Ernest Cleveland, Troy, OH; Herbert S. Cooke, Webster, NY; A. Roscoe Erbe, Phoenix, AZ; Gilbert Gabel, Lexington, KY; Thomas Kazberovich, Daytona Beach, FL; Weldon B. Lynne, Piqua, OH; Sprague A. Mackenzie, Wadsworth, OH; Albert J. Stein, North Ft. Myers, FL. **TOLEDO**—Harold F. Boehler, Toledo, OH; William E. King, Camp Hill, PA; James R. Lafrance, Perrysburg, OH; Calvin R. Miller, Avon Lake, OH; Joseph F. Nachman, San Diego, CA; Richard W. Shoemaker, Toledo, OH; Eugene H. Zytus, Naples, FL. **TUFTS**—Willard J. Bird, Watertown, MA; Karl E. Dahlen, Philadelphia, PA; W. Douglas Leggat, Lowell, MA; Lewis D. Loring, Germantown, TN; Alexander Parker, Wolfeboro, NH. **WAGNER**—Frank Botancourt, New York, NY; Aldred V. Danielson, Scarsdale, NY; Gerhard G. Dietrich, Palmyra, PA; Siegfried W. Dietrich, Downingtown, PA; John Guttler, Parlin, NJ; Elbert Harris, Westfield, NJ; J. Clark Mullin, Staten Island, NY; Lloyd F. Rice, Huntington Station, NY; Kenneth W. Rogler, Fair Lawn, NJ; Henry C. Sondergaard, New Milford, NJ; Russell A. Smith, Beach Haven, NJ; Robert P. Vomacka, Largo, FL. **WAKE FOREST**—James M. Banister, Cathedral City, CA; Ernest S. Benson, Wilmington, NC; Richard Darling, Trenton, NJ; Marshall P. Durham, Abilene, TX; Philip J. Latta, Marietta, GA; John P. Spencer, Seaboard, NC. **WASHINGTON**—Wilton H. Crosby, Puyallup, WA; Henry A. Fisher, Oakesdale, WA; Jack C. Heglie, Polson, MT; Harold W. Johnston, Seattle, WA; Clinton F. Raymond Jr., Vancouver, B.C.; Bert E. Rose Jr., Dallas, TX; Arden E. Stevens, Strathmore, CA; Jack B. Wheaton, Kirkland, WA; William E. Ziegler, Seattle, WA. **WAYNE STATE**—John B. Barrows, Troy, MI; Richard R. Chase, Encino, CA; Clinton W. Englander, Oakland, MD; Edwin R. Langtry, New Baltimore, MI; Donald R. McElroy, Sun City West, AZ; Alfred L. Nelson Jr., Sarasota, FL; Robert J. Nelson, Livonia, MI; Jack F. Nichols, Northville, MI; Roy M. Ossman, Huntington Woods, MI; George E. Reed, St. Louis, MO; Dr. Armand A. Renaud, Minneapolis, MN; Ted M. Scott, Huntington Beach, CA; Roy H. Shaffer, Camarillo, CA; Leonard L. Sidwell, Grayling, MI; Robert P. Webster, Anaheim, CA; Walter W. Westphal, Birmingham, MI. **WEST VIRGINIA WESLEYAN**—Frederick M. Arnold, De Graff, OH; Marvin B. Bush, Wilton Manors, FL; James C. Cox Jr., Plainview, TX; Mason E. Darnall, Buckhannon, WV; Paul Gatskie, Dunbar, WV; George Grubbs, Charleston, WV; Fred J. Linger, Buckhannon, WV; Robert B. Lowe, Fairview, WV; Jack L. Moore, Dunnellon, FL. **WESTMINSTER**—Joshua T. Stewart, Palm Bay, FL. **WISCONSIN**—William E. Altman, Sheboygan, WI; Byron O. Bell, Lake Geneva, WI; Norman M. Brennan, Lakeland, FL; John F. Stumreiter, Madison, WI; Arthur D. Van de Erve, Vero Beach, FL. **YALE**—Norman Badenhop, Vero Beach, FL; Edward Bermingham, Sedona, AZ; William Carnill, Lake Wales, FL; Thomas T. Church, Bethlehem, PA; Julian Ferguson, Ormond Beach, FL; Charles E. Ford, Pittsburgh, PA; David M. Gerber MD, Middletown, OH; Charles E. Gilbert, E. Holden, ME; Seth Heywood, Manchester, NH; Philip J. Huber, Troy, MI; Donald MacGregor, Havertown, PA; Col. Gerald H. Miller, Colorado Springs, CO; Pratt D. Phillips, Salisbury, MD; Henry C. Pierce, Leawood, KS; Blackwell Williams, Water Mill, NY.



Alfred "Pete" O'Hara, Syracuse '38, served Alpha Epsilon as HSP and went on to earn his law degree. In recent years Brother O'Hara has used his leadership skills in the corporate world. He is Chairman of the Board of Bacardi Corporation, makers of Bacardi Rum.



Richard H. Hall, Penn State '38 served as HSP of Upsilon Chapter, and is now owner of River House Farm in Franklin, Tennessee.

Annual Loyalty Fund Donor Salute

Alpha Sig alumni again proved that they want Alpha Sigma Phi to remain the greatest fraternity in America through their generous support to the 1987-88 Annual Loyalty Fund.

Tax-deductible alumni gifts to the Annual Loyalty Fund of the Alpha Sigma Phi Educational Foundation support many of the programs critical to the continued success of Alpha Sigma Phi. These include publication of *The Tomahawk*, the annual Alumni Workshop, chapter visitations by Chapter Leadership Consultants, the National Leadership Conference, regional Province Leadership Conferences, and a variety of educational manuals and materials.

"Our goal is to provide every Alpha Sig with the best, most educational, fraternity experience possible and to remain as one of America's premier national fraternities" says Executive Director, **Robert M. Sheehan, Jr., Westminster '76**.

Alpha Sigma Phi alumni continue to respond to the financial challenge of operating a major American higher education institution. The 1987-88 Annual Loyalty Fund broke another record for giving as proceeds increased by 12% to \$107,339.

The 1988-89 Annual Loyalty Fund goals have been set high. Basic cost increases along with the plans for continuing the new Alumni Conference

and expanding other programs call for a 15% increase in donation proceeds. The key to meeting the goal will be the Annual Loyalty Fund's Leadership Clubs, which include gifts made at these levels:

Grand Senior Presidents Club \$1,000; Charter Member Pinnacle Club \$500; Pinnacle Club \$250; and Anniversary Club \$143.

"We need brothers to make their gifts in the highest Leadership Club they can," says Educational Foundation Trustee, **Richard R. Gibbs, Oklahoma '51**, who is Chairman of the Grand Senior Presidents Club.

The 1987-88 Honor Roll



Brothers who contributed to the 1987-88 Annual Loyalty Fund at any level are listed below. If your name is here, many thanks, if not, make sure it is next year. And also encourage all brothers you know to join you in this special list. It's good company!

MEMBERS AT

LARGE

Burns, J.K. '84
Elliott, J.W. '69
Herman, D.E. '69
Robison, C.V. '41

ALABAMA

Boyle, W.J. '40
Carson, W.G. '43
Dean, R.E. Sr. '58
Eich, W.F. '30
Farragut, G.E. '53
Francis, A.R. '61
Larner, H.V. '68
Lee, R.M. '40
Madison, E.J. '58
Sofie, J.F. '50
Turner, W.B. '65
Vergos, G.M. '50
Weathers, D.L. '64

AMERICAN

Abbadessa, J.P. '40
Aloia, A.C. '79
Anglin, W.M. '49
Barkdull, W.L. '40
Bause, D.F. '54
Billone, C.G. '74
Bishop, J.B. '58
Bond, R.W. '63
Boni, C.M. '83
Bralthwaite, G.L. '74
Burch, T.A. '63
Butler, A.L. '64
Butler, E. Jr. '58
Caricofe, N.A. '83
Caulfield, B.B. '74
Chottiner, L.I. '80
Creasy, J.C. III '67
Denny, R.L. '49
England, J.R. '56
Franklin, S.B. '74
Fry, C.H. '84
Gainer, R.A. '66
Green, D.C. '66
Hall, D.L. '58
Hammond, J.H. Jr. '60
Jeffrey, J. II '51
Lock, W.T. Jr. '62
Marino, F.T. '40
Markel, K. '80

Muron, V.A. '51
Nemiroff, F.L. '79
Ogram, E.W. '48
Petrini, W.S. '55
Rich, A.H. '54
Snyder, D.E. '70
Sonder, O.L. '47
Spielman, J.E. '50
Springob, H.K. '48
Staurulakis, E. '79
Staurulakis, L. '79
Stone, W.H. '83
Tourtellot, P.L. '57
Vallieres, A.I. '41
Witter, R.M. '52

ARIZONA

Austin, E.P. '55
Medigovich, D.B. '55
Mense, A.T. '64
Muir, A.L. '56
Powers, D.E. '66
Steinwachs, D.M. '67
Stewart, W.D. '62
Strickland, R.L. '55
Tokuyama, H.H. '62

ATLANTIC CHRISTIAN

Allen, R.J. '66
Aycocck, M.L. '68
Barefoot, W.T. '53
Evelt, G.M. Jr. '63
Faircloth, L.O. '58
Gialrims, L.S. '58
Gravitt, R.D. Jr. '68
Harwood, J.C. '58
Jacobs, E.W. Jr. '68
Kornegay, A.R. '60
Myers, A.W. '79
Pleasant, C.W. Jr. '77
Rasberry, E.A. Jr. '58
Salleeby, W.M. '76
Sherratt, W.E. '65
Silverthorne, R.G. Jr. '75
White, J.W. Jr. '73
Wilder, R.W. '73
Wilkins, L.D. '74



Dr. Robert E. Miller, Connecticut '49, is Chairman of the Educational Foundation Trustees. He is President of Quinebaug Valley Community College in Danielson, CT. Brother Miller received the 1988 Distinguished Service Award at the Final Banquet of the 1988 National Leadership Conference & Convention, recognizing his years of service to the "Old Gal."

BALDWIN-WALLACE

Bazur, J.H. '46
Beach, R.A. Jr. '47
Beck, T.A. '72
Berns, P.S. '65
Burnsides, D.D. '72
Burton, C.A. '58
Cary, H. '46
Chapman, J.H. '48
Coy, R.L. '58
Ewers, W.R. '71
Goss, G.G. '52
Govich, B.M. '49
Harris, J. '72
Howard, R.F. '59
Irons, J.B. Jr. '60
Johnston, R.J. '58
Larsen, D.H. '53
Moore, R.E. '70
Mountz, W. '43
Nemeth, J.K. '47

Nichols, J.D. '68
Owens, W.F. '61
Parks, D.R. '72
Petulla, D.M. '73
Reiner, R.P. '39
Restid, B.W. '72
Reynolds, D.L. '51
Robinson, C.T. '60
Ross, K.W. '59
Roy, W.R. '59
Shumay, A.J. '70
Sietman, R.J. '40
Stark, J.M. '73
Stephens, M.E. '73
Sykora, T.A. '48
Taub, R.S. II '71
Thiemann, D.A. '61
Thomas, D.A. '53
Volk, T. '39
Wendt, V.E. '49
Wilson, T.N. Jr. '49



Richard R. Gibbs, Oklahoma '51 is an Educational Foundation Trustee and is chairing the Annual Loyalty Fund's "Grand Senior Presidents Club" again in 1988-89. He is the Chairman of Automatic Engineering Inc., Tulsa, OK.

Wise, A.B. '43
BETHANY
Bartholomew, T. II '71
Bonville, W.J. '47
Calabrese, C.T. '60
Campbell, T.W. Jr. '63
Cohn, S.L. '65
Cutlip, R.B. '37
Davis, K.W. '70
Desomma, V.V. III '81
DiChristina, D.G. '80
Dragonin, G.N. '56
Finley, J.L. '43
Friebe, J.C. '71
Funka, T.H. '65
Grimes, L.E. '61
Hornor, W.H. '29
Jonsson, W.R. '57
Larsen, P.F. '59
McGall, E.C. '50
Miller, E. '46

Moyer, W.T. '60
Sandercox, R.A. '51
Saxman, B.E. '33
Sipe, H.C. '34
Spaulding, D.L. '67
Stermer, R.A. '55
Taylor, C.R. '47
Ueland, S.B. '64
Wallace, R.M. '40
Wolf, W.F. '47
Zaphyr, P.A. '47

BOWLING GREEN

Ankerman, H.F. '65
Bimonte, R.M. '84
Bishop, D.B. '77
Blakemore, L.M. '52
Cameron, W.A. '50
Conrad, C.D. '67
Dedrick, T.R. '67
Deutch, R.E. '65

Continued on page 20

The 1987-1988 Leadership Clubs



Grand Senior Presidents Club

\$1,000-Up

Elliot A. Baines
Middlebury '40
John D. Betz
Lehigh '38
Don M. Blevins
Marshall '70
Peter S. Fuss
Michigan '54
Richard R. Gibbs
Oklahoma '51
Henry Hamburg
Tri-State '36
Hollis R. Hilstrom
Iowa State '31

John R. Hoyt
U.C.L.A. '29
Howard L. Kleinoeder
Washington '35
Robert W. Kutz
California '67
Robert A. Sandercox
Bethany '51
Robert M. Sheehan, Jr.
Westminster '76
Stan G. Thurston
Iowa State '66
Alfred B. Wise
Baldwin-Wallace '43



Charter Member Pinnacle Club

\$500 to \$999

Robert L. Bashell
Milton '69
George P. Binder
Case-Western '39
R. Daniel Braun
Toledo '58
Hugh Carpenter
Colorado '27
R. Neil Christy
Marietta '38
Randall B. Cutlip
Bethany '37
Ronald W. Dollens
Purdue '65
Leon R. Fencil
Penn State '30

Kevin J. Garvey
Westminster '75
Donald E. Genereux
Iowa State '71
Loren G. Gillespie
Ohio State '49
Norman W. Hadsell
Ohio Wesleyan '52
Robert L. Howsam
Colorado '38
Robert W. Kerney
Illinois Tech '40
Joseph B. Lanterman
Illinois '34
Wayne H. Leland
Illinois Tech '63
Maitland B. McKenzie

California '22
David I. Miller
Tufts '65
Stan N. Miller
Purdue '64
Carl E. Moore, Jr.
Loyola '86
Robert H. Morris
Michigan '57
Fred H. Navarra
Westminster '48
Michael A. Nichols
California '64
Charles Polandick
Ohio Wesleyan '55
Kent G. Porter
Missouri Valley '74

George S. Richardson
Colorado '17
Marvin G. Schmid
Nebraska '20
Robert T. Sheen
Lehigh '30
John B. Showerman
Northern Michigan '69
William R. Strand
Ohio Wesleyan '48
Joyce A. Swan
Missouri '29
Richard D. Vanselow
Missouri Valley '50
Thomas N. Wilson, Jr.
Baldwin-Wallace '49



Pinnacle Club

\$250 to \$499

Mahlon L. Aycok
Atlantic Christian '68
Robert D. Baker
Purdue '73
Bruce G. Barton
Detroit Tech '68
Lawrence F. Bischof
Kentucky '18
Ralph W. Brown
Lehigh '32
William A. Buending
Milton '53
Robert G. Bunch
Marshall '33
Roger F.X. Carney
Purdue '58
Marvin A. Chapman
Michigan '33
Daniel Crecca
Rutgers '47
Jon B. Crumpton
Iowa State '75

R. W. Delamater
Penn '26
Patrick J. Dempsey
Lehigh '52
Richard A. Dexter
Oregon State '60
Fitz E. Dixon
Widener '73
Dan L. Egler
Indiana '67
L. Edgar Freidheim
Chicago '30
Lloyd V. Fry
Iowa State '34
J. Guilford Gerlach
Ohio State '43
Mark C. Gillen
Illinois '65
Charles M. Goldfarb
Stevens Tech '75
George R. Hart
Westminster '43

Bruce H. Hay
Nebraska '26
Stephen C. Hetz
Ohio Wesleyan '62
Marshall Hieronimus
Oregon State '75
George E. Holloway
Rutgers '31
Kenneth C. Hudson
Illinois Tech '52
Lawrence B. Hunt
Davis & Elkins '64
Donald J. Imbriale
R.P.I. '75
Brian P. Judge
Lawrence Tech '67
Brian W. Jump
Indiana '77
William C. Kegel
Westminster '48
Charles W. Kincaid
Charleston '60

Christopher J. Koch
Indiana '79
William G. Krejci
Purdue '67
Robert E. La Rue
Illinois '26
Roland A. Langley
California '49
William P. Lawler
Polytechnic '33
Wayne H. Leland
Illinois Tech '63
Randall S. Lewis
Oregon State '81
John C. Lundgren
Colorado '30
Charles W. McCullough
Illinois Tech '41
Edward A. Meagher
Penn '45
Robert B. Meckel
California '40

Pinnacle Club continued \$250 to \$499

John R. Miles
Oklahoma '64
Robert E. Miller
Connecticut '49
John G. Parilla
W. Va. Wesleyan '59
James F. Rappolt
R.P.I. '56
Robert C. Ruhl
Michigan '60
John D. Russell
Stanford '30
Thomas J. Russo
Wagner '47

Blair E. Saxman
Bethany '33
Theodore F. Schmidt
Stanford '32
Niels Schultz
Stanford '35
William G. Schutte
Stevens Tech '70
Carleton W. Schwiesow
Ohio State '33
J. Patrick Sheehan
Westminster '77
I. Glenn Sipes
Cincinnati '61

Dale E. Snyder
American '70
Robert W. Stemmle
Stevens Tech '59
John F. Sullivan, Jr.
Wisconsin '21
Louis D. Sullivan
Ohio Wesleyan '49
John Donald Talbot
Stevens Tech '63
Peter L. Tourtellot
American '57
Charles P. Turner
Washington '26

Charles J. Vohs, Jr.
Penn State '75
Warren E. Watkins
Westminster '51
Melville W. Wendell
Illinois Tech '54
Nelson E. Wheaton, Jr.
Rutgers '31
Ralph E. Wiencek
Missouri Valley '50
Eugene S. Williams
California '24
Everett M. Witzel
California '37



Anniversary Club

\$142 to \$249

Lennis C. Ackerman
U.C.L.A. '36
John N. Adam
Penn State '30
Steven G. Amend
Penn State '82
Ralph W. Anderson
Iowa State '33
Ransom J. Arthur
California '43
Frederick C. Ash
Michigan State '62
E. Paul Austin
Arizona '55
Hobart R. Avery
Cornell '22
George Bader
Penn State '23
Norwood E. Band, Jr.
Ohio Wesleyan '57
Elmer R. Bax
Missouri '39
Charles M. Beeghly
Ohio Wesleyan '27
Charles S. Bell
Oklahoma '55
Robert S. Bergman
Illinois Tech '53
R. J. Bilger
Cornell '47
David B. Bishop
Bowling Green '77
Vincent P. Blunno
Columbia '32
Michael G. Blasi
Rutgers '65
Russell B. Blight
Davis & Elkins '60
Robert L. Boor, Jr.
Toledo '55
Robert A. Booty
Purdue '61
Duncan B. Borland
Washington '73
Gary L. Braithwaite
American '74
Robert H. Bredeen
Oklahoma '26
Ronald C. Brown
Missouri Valley '66
John S. Bruce
Penn State '53
James L. Bruce, Jr.
Presbyterian '64
Robin R. Bryan
Tri-State '63

Michael J. Byers
Purdue '66
Luther R. Campbell, Jr.
Penn '47
Charles H. Carscallen
Michigan '57
William G. Carson
Alabama '43
Jack E. Caveney
Illinois '46
James C. Chadwick
Penn State '77
John R. Chaney
Indiana '67
Steven M. Chegash
Lawrence Tech '76
Guy A. Clarke
California '31
Livingston A. Cody
Hartwick '54
James H. Conway
California '50



Steven V. Zizzo, Illinois '84, top and John B. Gibson, Jr., Indiana '85 are Chapter Leadership Consultants for Alpha Sigma Phi during 1988-89. They will be visiting chapters nationwide helping with goal-setting, officer training and chapter programming.

Jesse L. Cooksey
Wofford '52
Thomas B. Cornell
Michigan State '56
Wilbur E. Cox, II
Charleston '60
Walter H. Cropper
Nebraska '38
Michael A. Crowley
Illinois Tech '77
Tommy G. Curry
Missouri Valley '60
Robert J. Czajkowski
Penn State '75
George D'Addamo
Iowa State '67
Theodore A. Dahlstrom, Jr.
Illinois Tech '58
Floyd A. De Nicola
Davis & Elkins '49
Clarke DeWaters
Wagner '52
Chester A. DiLallo
Columbia '55
C. E. Dilley
Ohio Wesleyan '42
J. Harvey Dize
Detroit Tech '66
John F. Doane
California '36
Thomas C. Dolan
Loyola '68
Patrick W. Donegan
U.C.L.A. '54
Carl H. Drescher
Ohio State '53
John M. Dufford
Penn State '41
Howard A. Dunn
Oregon State '42
Joseph F. Dunn
Syracuse '43
Charles K. Dutcher
Ohio State '71
Scott E. Egan, Jr.
Ohio State '60
Dennis R. Eickhoff
Purdue '64
Winfred A. Fishel
Wake Forest '45
Philip E. Flickinger
U.C.L.A. '47
Kenneth J. Fonseca
R.P.I. '77
Robert M. Frankenfield
Purdue '69

Lynn L. Fruth
Toledo '69
Edward S. Gallagher
Lehigh '34
James B. Gardner
Tulane '63
Brian D. Gates
Westminster '57
Robert M. Gill
Radford '83
Alba R. Glassburn, Jr.
Colorado '35
Fred B. Glassley
California '34
Donald F. Glos
Illinois '21
Raymond E. Glos
Illinois '22
Arthur F. Goldsby
Lehigh '51
Stephen E. Goldsmith
Marietta '64
William T. Gordon
Oklahoma '50
Robert C. Greer, III
Davis & Elkins '50
Gary J. Griffith
Lehigh '71
Robert A. Grossman
Ohio State '67
Thomas J. Hachten
Lehigh '81
E. Spence Hackney
Missouri Valley '67
Robert G. Hagele
Toledo '49
James H. Hammond, Jr.
American '60
Candler C. Harper
Presbyterian '60
John M. Harrison
Iowa '31
Carl P. Hartmann
Illinois '54
Arthur W. Hathaway
Lycoming '77
Jeffery C. Hayes
Penn '65
Clarke D. Henley
Lehigh '66
Daniel D. Herchenroether
Westminster '77
Warren H. Hinks, Jr.
Penn State '42
Jack K. Holmes
Tufts '41

Anniversary Club continued \$142 to \$249

Phillip M. Horan
Penn '49
Charles C. Huber
Ohio State '42
Wilbur F. Hurlburt, Jr.
N.J.I.T. '32
Arthur C. Hurt, Jr.
Stanford '27
William L. Jambrek
Milton '59
Fred I. Johnson
Illinois Tech '39
Robert F. Johnston
Ohio Wesleyan '34
James Kaiser
Illinois '75
Abe Karam
Eastern Michigan '66
Robert A. Kegel
Illinois Tech '59
Roland J. Kelsey
Illinois '38
Harry M. Kepner
Ohio Wesleyan '56

Eugene V. Marozzi
Penn State '64
Donald L. Martin
Stanford '47
Charles A. McCaffrey
Illinois '82
Ambrose E. McCaskey, Jr.
West Virginia '31
Gerald P. McCloskey
California '56
Duane D. McCurdy
Illinois '50
Edward C. McCall
Bethany '50
John T. McKay
Indiana '68
William S. McLeod, III
California '66
Allan T. Mense
Arizona '64
Wayne R. Merrick
Syracuse '37
Jack M. Merrill
Washington '39

Julius K. Nemeth
Baldwin-Wallace '47
Walter E. Neuls
Wagner '63
Frederick G. Newberg
Wagner '62
J. Robert Newgard
Purdue '39
Frederick M. Noble
Chicago '20
Robert S. Nocek
Illinois Tech '63
Jerome H. Orlans
Wayne State '69
Douglas F. Osborne, Jr.
Wake Forest '68
Frederick V. Paine
Westminster '44
Joseph Pannucci
Rutgers '68
Mickey J. Panovich
U.C.L.A. '41
Dennis R. Parks
Baldwin-Wallace '72
Denson C. Pate
Ohio State '64
Robert G. Pearson
Purdue '67
William L. Phillips
Penn State '59
John H. Powell
Washington '43
Ernest R. Presser
Purdue '61
Jackson W. Rafeld
W. Va. Wesleyan '33
David A. Ramsey
Marshall '53
Robert F. Reichert
Tri-State '64
James I. Reid
Missouri '36
Emil W. Reznik
Westminster '48
Charles A. Rikli
Oklahoma '67
Burton T. Ritchie
Penn '60
Charles V. Robison
your chapter '41
Fred E. Roedger
Illinois '38
Harry E. Roethe, Jr.
Illinois '48
E. Kent Rogers
Wake Forest '50
Joseph G. Roosevelt
Stevens Tech '67
Edwin M. Ross
California '18
Francis P. Russell
U.C.L.A. '55
Frederick D. Sample
Widener '67
Dennis E. Schalliol
Indiana '68
Carl P. Scheidegg
Stevens Tech '66
Louis C. Schenk
Wagner '28
Donald W. Schindler
Marietta '50
Jeffrey P. Schwind
Toledo '75
Andrew J. Serafin
Purdue '62
Gene H. Sharp
Oklahoma '49
James E. Shepherd
Missouri '29
William E. Sherratt
Atlantic Christian '65

Lee C. Shipman
Massachusetts '37
Richard A. Shirley
Michigan '53
Alexander J. Shumay
Baldwin-Wallace '70
Domingos R. Silva
Mt. Union '49
John H. Sims
Ohio State '36
Leonard T. Skoblar
Stevens Tech '66
Frank D. Smith, Jr.
Marietta '48
Mark W. Smith
R.P.I. '78
Robert E. Spadaccia
Hartwick '67
Frank C. Stone
California '27
Robert B. Strecker
Washington '78
Waldo D. Sturm
Michigan '56
Louis E. Surles
Missouri Valley '54
Kenneth E. Swatt
Lehigh '68
William F. Tague
Syracuse '40
Robert S. Taub, II
Baldwin-Wallace '71
Frederic H. Taylor
Yale '37
David L. Thiele
Missouri Valley '58
F. Terry Thomasson
Tri-State '53
H. Harold Tokuyama
Arizona '62
Louis H. Toporcer
Westminster '54
George B. Trubow
Michigan '53
John T. Trutter
Illinois '39
Charles G. Uram
Illinois Tech '51
Curtis W. VanDeMark
Cincinnati '60
Herbert Vaughan
Wagner '31
Richard M. Vennett
R.P.I. '61
Gus M. Vergos
Alabama '59
Philip F. Voigt
Wisconsin '31
Samuel K. Wait
Cornell '49
Richard M. Wallace
Bethany '40
Theodore D. Wayman
Westminster '82
Stephen A. Weinhardt
Purdue '72
Andrew A. Werneke
Iowa State '69
Ryon W. Wilder
Atlantic Christian '73
John L. Williams
Westminster '39
Frederick C. Winner
Lycoming '70
Charles J. Winquist
Michigan State '56
Clifford Wong
U.C.L.A. '66
W. Russell Wood
Washington '19
John F. Zamparelli
Tufts '47

Top Ten Reported Pledges, 1987-88

1. Marshall, Beta Delta	49
2. Illinois, Eta	40
3. Purdue, Alpha Pi	39
4. Longwood, Delta Iota	36
5. Radford, Delta Theta	33
6. SUNY Plattsburgh, Delta Xi	32
7. Illinois State, Delta Omicron	31
Miami, Gamma Theta	31
Widener, Gamma Xi	31
10. American, Beta Chi	28
Rutgers, Beta Theta	28
Washington, Mu	28

(Figures as of end of '87-'88 academic year. Based on reports submitted to National Headquarters by chapters.)

Carl E. Kleiber
Stevens Tech '26
David E. Knauss
Lehigh '79
Bruce A. Krahmer
Iowa State '58
Frank J. Krebs
Mt. Union '29
Alfred H. Labahn
Illinois '44
Edwin R. Langtry
Wayne State '38
Ronald W. Lee
Washington '68
James K. Leonard
Wayne State '52
Richard Leonard
Penn State '44
George R. Leyda
Mt. Union '29
John A. Lidstrom
Stevens Tech '57
Russell O. Lieuallen
Oregon State '58
W. Thomas Lock, Jr.
American '62
Robert A. Mahan
Stevens Tech '63
Joseph D. Marble
Michigan '47
Michael Mariolis
Missouri Valley '69

Clarence E. Merritt
Toledo '41
Albert A. Mills, Jr.
Ohio Wesleyan '37
Herbert L. Mitchell
U.C.L.A. '33
Henry W. Mohr
California '47
M. Robert Moister
Davis & Elkins '60
Richard L. Monnett
Wayne State '51
John E. Moore
Cornell '73
Donald R. Morgan
Purdue '57
Douglas H. Mowat
Tri-State '54
William T. Moyer
Bethany '60
William P. Muchow
Westminster '64
Lawrence J. Munini
Illinois Tech '61
Jackson S. Myers
Washington '31
Ronald M. Nakamura
Penn '58
Charles H. Nash
Washington '42
William S. Needham
California '42

Honor Roll

Continued from p. 16

20

Honor Roll

EASTERN MICHIGAN

Antonucci, S.A. '70
Cabello, R.G. '70
Hentrich, W.G. '82
Karam, A. '66
Marushak, L.E. '67
Pearshall, A. '66
Stegeman, J.W. '66

FINDLAY

Apple, C.M. III '72
Backus, H.C. '71
Donahue, R.J. Jr. '66

FRANKLIN & MARSHALL

Brumbaugh, L.C. '36
Snyder, C.F. '41

HARTWICK

Bang, C.D. '72
Beecher, R.V. '35
Birks, R.J. '68
Burhouse, J.R. '64
Chai, W. '51
Cody, L.A. '54
Colihan, W.J. '72
Davidson, M.C. '78
Deffer, S.J. '79
Droesch, E.B. '79
Gerdts, R.H. '70
Graunke, R.H. '47
Hendrick, S.D. '73
Hooks, J.W. '50
Kirk, J.T. '68
Kistler, S.B. '47
Kratoville, H.J. Jr. '50
Lisuzzo, S.J. '73
Livingston, P.A. '35
Loweth, W.A. '70
Marvin, W.R. '73
Mayes, M.R. '39
Munk, J.C. '78
Murdoch, G.W. '71
Nelson, C.J. '48
Obernesser, M.S. '77
Ohi, W.A. '75
Oliver, R.K. '47
Pealer, C. '61
Peinkofer, J.R. '79
Pozefsky, M.W. '77
Roggensack, H.J. '76
Sawicki, R.A. '74
Sipprell, R.D. '60
Smith, J.E. '61
Spadaccia, R.E. '67
Steves, D.L. '78
Stock, C.W. '64
Storch, P.T. '72
Swift, R.F. '59
Vanhoesen, M.G. '37
Williams, R.W. '48

HARVARD

Backus, D.C. '24
Broder, C.A. '24
Carpenter, A.T. '29
Eaton, S.L. '24
Farnham, A.S. '26
Gorriaran, M. '23
Wyman, J.H. '21

ILLINOIS TECH

Anderson, J.A. '50
Anderson, R.F. '39
Bakalar, R.D. '66
Balza, J.J. '68

Benson, R.E. '51
Bergman, R.S. '53
Blaisdell, W.W. '63
Bledsoe, V.C. '62
Browning, R.W. '44
Buben, M.C. '72
Buechler, J.R. '60
Carey, N.W. '41
Carlson, R.N. '66
Cassill, D.W. '73
Chase, E.D. '58
Cocchia, M.A. '42
Collier, T.P. '39
Conroy, W.J. '53
Crowley, M.A. '77
Dahlstrom, T.A. Jr. '58
Danforth, G.E. '63
Deuter, C.H. '39
Dolber, R.E. '75
Evanoff, S.P. '77
Fikaj, T. Jr. '58
Fitzpatrick, J.V. '47
Franczek, M.A. '78
Frost, R.S. '42
Gabel, R.B. '65
Gallagher, G.C. Jr. '47
Geoghegan, J.A. Jr. '76
Gillespie, H.R. '41
Glossop, D.L. Jr. '52
Gouwens, A.J. '62
Graham, C.P. '34
Griglik, C. '50
Harison, L.C. '47
Hess, D.E. '60
Hudson, K.C. '52
Imbsen, G.H. '58
Jansen, P. Jr. '43
Janssen, E.G. '47
Johnson, F.J. '39
Jonelis, R.E. '43
Kegel, R.A. '59
Kerney, R.W. '40
Leavitt, E.H. '43
Leland, W.H. '63
Lietz, A.J. '80
Long, L.E. '43
Mailhook, D.J. '41
Marsh, H.R. '53
McCullough, C.W. '41
McMahon, J.C. '78
Miller, T.H. '70
Morgan, G.A. '30
Morrissey, G.M. Esq. '62
Munini, L.J. '61
Nocek, R.S. '63
Novy, R.F. '44
Oldenburg, R.A. '42
Olson, R.R. '78
Oslakovic, C.S. '60
Paulsen, R.T. '43
Piepenbrink, R.E. '39
Plengey, W.D. '39
Rahn, R.W. '51
Ruda, M.J. '69
Rudolph, O.B. '49
Sallmann, D.W. '65
Shea, L.W. '69
Sholeen, C.R. '66
Singer, T.T. '50
Smith, C.D. '62
Stec, T.A. '79
Stewart, W.P. '57
Stuart, D.K. '64
Tappan, P.W. '49
Uram, C.G. '51
Vanden Boogart, R.C. '72
Weinreich, D.C. '80
Wendell, M.W. '54
Wilt, W.F. '45
Youngberg, E.C. '39
Zinkel, R.R. '50

ILLINOIS

Abraham, R. '62
Anderson, M.S. '72
Austin, J.D. '35
Balderson, B.A. '34
Bennett, R.W. '54
Bourn, H.J. '59
Brydges, W.T. '26
Carney, J.C. '57
Caruso, J.L. '82
Caveney, J.E. '46
Cloyd, R.H. '48
Cooper, M.E. '66
Costabile, R.C. '35
Cowan, L.J. '51
Davis, T.L. '28
Dunniway, D.A. '53
Foster, J.C. '69
Foute, H.K. '38
Froehling, D.A. '77
Gallagher, R.H. '55
Galloway, D.A. '69
Garrett, F.J. '37
Geiselhart, E.R. '82
Ghiselli, A.C. '35
Gillen, M.C. '65
Given, C.M. '63
Gladish, R.L. '61

Kass, D.V. '84
Kelsey, R.J. '38
Klocek, G.W. '66
La Rue, R.E. '26
Labahn, A.H. '44
Landon, R.H. '25
Lanterman, J.B. '34
Lauterbach, W.W. '18
Lehwald, C.J. '61
Lewis, J.T. '23
Lowe, G.K. '31
Luken, R.L. '60
Maughmer, M.D. '69
McCaffrey, C.A. '82
McCurdy, D.D. '50
Meents, W.F. '33
Monsson, C.D. '38
Monsson, W.H. '19
Nelson, G.M. '39
Norby, W.H. '65
Olson, R.H. '54
Park, S.D. '26
Plech, R.J. '31
Platt, F.J. '31
Powell, R.K. '49
Pruett, C.E. '38
Putta, J.G. '39
Rhodes, M.G. '57

INDIANA

Brown, T.L. '75
Cable, J. '67
Chaney, J.R. '67
Egler, D.L. '67
English, M.L. '71
Fagg, L.R. '67
Fischer, R.P. '69
Fricke, M.D. '79
Harris, D.E. '77
Hillinger, S.T. '74
Hoffman, D.J. '77
Hunter, C.H. '77
Jump, B.W. '77
Koch, C.J. '79
McKay, J.T. '68
Neddo, L.M. Jr. '67
Nelson, J.T. '81
Newmann, C.F. '67
Nicholas, J.W. '74
Nugen, B.R. '67
Perkins, K.R. '71
Pollack, M.W. '82
Presnal, B.S. '79
Schalliol, D.E. '68
Simon, A.R. '80
Stangebye, V.H. '71
Struhs, J.P. '84

Crumpton, J.B. '75
Culbert, L.L. '68
D'Addamo, G. '67
Dockstader, W.B. '37
Drew, D. '59
Ethington, R.D. '71
Fischer, M.J. '76
Floren, T. '68
Foster, J.R. '56
Fry, L.V. '34
Funke, A.L. '74
Genereux, D.E. '71
Grimes, G.C. '65
Gunderson, J.M. '56
Hawkins, E.J. '28
Hawkins, L.L. '31
Heiberg, E.R. '60
Hill, R.A. '74
Hilstrom, H.R. '31
Holthaus, K.C. '71
Jaspers, R.H. '57
Jennings, R.E. '61
Johnson, H.C. '58
Kaled, A.R. '62
Kallett, R.H. '70
Kerr, R.J. '65
Kirkpatrick, C.W. '70
Knief, J.C. '74
Kraemer, B.A. '58
Maddy, M.W. '79
Miller, T.E. '69
Mino, P.M. '69
Nickerson, H.J. '58
Nordland, R.A. Jr. '80
O'Conner, W.J. '56
Olsen, R.G. '70
Olson, S.E. '65
Paras, G.S. '34
Pearson, R.K. '62
Penney, S.E. '20
Peterson, W.F. '61
Phillippi, A.F. '76
Riepe, C.R. '35
Ritts, C.S. '38
Sanford, E.C. '33
Seminario, J.P. '76
Stambaugh, G.M. '71
Stearns, W.F. '29
Taylor, G.S. '40
Thomas, C.W. '52
Thurston, S.G. '66
Wedekind, R.R. '61
Wenzel, D.R. '61
Werneke, A.A. '69
Wirth, W.J. '34
Wood, D.E. '66
Zeller, M. '59
Ziemann, T.E. '65

The 1,000 Club— Total Brothers Initiated

1. Washington, Mu	1611
2. Illinois, Eta	1511
3. Marietta, Delta	1463
4. Penn State, Upsilon	1343
5. Westminster, Alpha Nu	1228
6. Cornell, Iota	1203
7. Purdue, Alpha Pi	1181
8. Oregon State, Psi	1000
Closing In:	
9. Tri-State, Beta Omicron	991
10. Michigan, Theta	976

Glos, D.F. '21
Glos, R.E. '22
Grace, D.L. '69
Grater, W.C. '40
Grill, J.A. '51
Guthoff, R.H. '31
Haines, R.W. '29
Hall, J.H. '40
Hall, W.D. '42
Hameetman, R.A. '71
Hamilton, K.A. '55
Hanson, R.F. '49
Hartmann, C.P. '54
Helleny, T. '42
Hendricks, F.D. '30
Hodal, R.J. '34
Holste, J.R. '54
Hughes, V.W. '71
Izard, R.F. '59
Jasper, R.H. '70
Jirus, R.A. '53
Johnson, N.E. '40
Kaiser, J. '75

Roedger, F.E. '38
Roethe, H.E. Jr. '48
Roxworthy, P.J. '73
Sandvold, C.E. '16
Selig, J.A. '31
Snyder, W.L. '71
Stambach, H.M. '33
Stotlar, S.D. '47
Thom, D.E. '51
Trutter, J.T. '39
Watson, R.B. '61
Watson, S.D. '76
Weibel, J.R. '62
Williams, G.R. '40
Young, R.A. '56
Zander, R.W. '49

Wahman, F.L. '73
Wernicke, S.A. '69
Willey, D.L. '78

IOWA STATE

Adams, R.W. '36
Anderson, R.W. '33
Anderson, W.J. '55
Arnold, F.J. '23
Babcock, J.R. '65
Battell, F.C. '34
Berg, R.E. '50
Boatman, J.R. '79
Bohan, C.L. '28
Boyd, W.E. '62
Brooks, M.R. '39
Buck, R.M. '30
Carpenter, M.W. '55
Carter, H.W. '25
Charland, E.G. '78
Clausen, D.R. '84
Cloys, W. '20

IOWA

Akre, C.T. '28
Carmichael, H.H. '28
Conn, B.C. '28
Davis, H.L. '32
Dewel, B.F. '26
Engeseth, H.B. '25
Hanna, K.L. '29
Harrison, J.M. '31
Hix, W.J. '30
Hutchison, E.J. '24
Lubke, H.A. '38
Manchester, W.H. '29
Masters, G.A. '30
Maurer, N.L. '33
Nelson, E.J. '36
Nopoulos, L.G. '38
Peterson, K.M. '27
Post, R.B. '36

Honor Roll

Runke, R.C. '31
Sidwell, R.R. '32
Thompson, E.A. '35

KENTUCKY

Allen, B.L. '27
Bethel, H.L. '37
Bischof, L.F. '18
Clarke, W.J. '52
Cummins, K.D. '47
Davis, H.K. '56
Engler, F.E. '49
Hund, J.W. '35
Jones, O.L. '20
Kane, J.M. '32
Lyle, I.W. Jr. '31
Magoffin, B. Jr. '37
O'Bannon, L.S. '21
Russell, V.C. '58
Saunders, W.H. '28
Schlachter, R.W. '38
Trosper, O.W. '41

LAWRENCE TECH

Chegash, S.M. '76
Debin, G.J. '84
Evans, M.W. '76
Filzpatrick, P.J. '69
Judge, B.P. '67
Look, R.C. Jr. '74
Schmaltz, A.T. '69
Shahinian, S.J. '83
Swidler, M.D. '76
Vetraino, L.G. '69
Weir, T.K. '67

LEHIGH

Abel, R.W. '51
Auletta, L.J. Jr. '80
Basye, J.D. '73
Bennett, W.J. '54
Berney, S.M. '81
Betz, J.D. '38
Blythe, P.A. '85
Bradley, S.R. '80
Breckner, J.R. '82
Brown, R.W. '32
Carroll, W.H. '78
Carson, J.H. '66
Cooper, D.G. '60
Dean, J.C. '76
Dempsey, P.J. '52
Dengler, R.M. '30
Donahue, T.P. '78
Dworski, L.D. '66
Dyre, W.T. '35
Eberly, N.D. '59
Endriss, W.W. '68
Field, A.W. '49
Gallagher, E.S. '34
Goldsby, A.F. '51
Gough, R.G. '59
Grey, F.J. '83
Griffith, G.J. '71
Hachten, T.J. '81
Haist, R.M. '77
Hamilton, R.W. '52
Haviland, R.L. Jr. '60
Hendrick, R.R. '46
Henley, C.D. '66
Hovanec, G.A. '72
Huth, F.R. Sr. '42
Janata, V.F. '60
Jensen, J.S. '79
Karoli, K.T. '81
Knauss, D.E. '79
Koppes, A.W. '50
Krumrine, P.H. III '70
Loux, H.A. '48
Lubbers, A.W. '31

Markel, J.L. '65
Marsden, R.D. '37
McGrath, J.H. '72
McMurtrie, J.B. '56
Miller, E.W. '76
Miller, L.H. '40
Mountsler, J.S. '46
Mountsler, R.W. '43
Moyer, D.L. '58
Parsons, J.H. '34
Pawluk, J.A. '69
Potash, T.E. '80
Quinn, J.J. III '74
Riccio, L.J. '66
Ricker, K.A. '83
Schopbach, S.C. '64
Sheen, R.T. '30
Shepherd, R.M. '38
Smith, H.S. '75
Smith, M.J. '83
Stapleton, R.D. '56
Stine, S.H. '76
Sunderland, D.E. '62
Swatt, K.E. '68
Volpe, R.J. '72
Von Dreusche, C.F. Jr.
Waltman, W.C. '42
Weber, E.H. '53
Weigman, T.E. '67
Weller, M.L. '78
Widmer, K. '34
Williams, H.H. '47
Wilson, R.M. '33
Winter, H.K. '74
Wise, B.A. '70
Yammarino, J. '82
Young, H.O. '35
Zacharchuk, W.V. '46

LONGWOOD

Campbell, F.W. '82
Cole, T.L. III '80
Cosner, D.W. '83
Tilghman, H.P. '80

LOYOLA

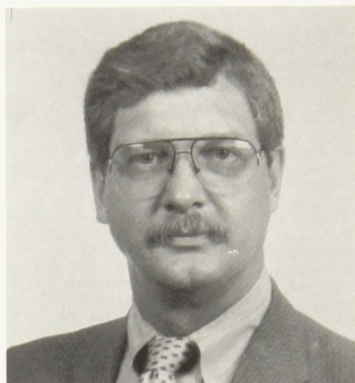
Brown, M.D. Jr. '70
Burrell, M.J. '73
Cullerton, J.J. '68
Dolan, C.P. '68
Farrell, J.M. '68
Keane, J.E. '70
Laubhan, D.A. '68
Lynch, M.A. '75
Moore, C.E. Jr. '86
Orser, S.J. '69
Scott, D.R. '75
Stainer, G.A. '70
Whitaker, J.W. '68

LYCOMING

Bartlow, K.P. '65
Bepko, G.L. '65
Dupler, J.R. '69
Ellenberger, M.E. '72
Hathaway, A.W. '77
Herchenrider, M.W. '71
Kepner, D.R. '75
Melick, D.R. '74
Milner, T.J. '65
Ollas, F.L. '65
Piatoff, K.S. '75
Shebell, M.W. '85
Unruh, R.J. '65
Vreeland, P.C. '80
Winner, F.C. '70
Yanuzzi, P.M. '81

M.I.T.

Boynton, W.P. '29
Kohr, J.M. '34
Wilsey, H.R. '35



Bill Krejci, Purdue '67, Kingwood, TX
has been promoted to area manager of
export sales for Shell Oil in the western
hemisphere.

MARIETTA

Anderson, D.L. '64
Arkle, T. Jr. '37
Barker, B.G. '64
Boling, P.C. '60
Bruce, J.E. '64
Buehler, F.L. '64
Bush, G.E. Jr. '24
Caplinger, C.W. '61
Cardillo, C.M. '37
Choquette, N.R. '65
Chorpenning, F. '34
Christy, R.N. '38
Clark, S.E. '66
Collins, P. '81
Cordes, N.L. '37
Crawford, C.H. '29
Crecco, R.D. '57
Cubelli, G.E. '39
Davis, M.G. '41
Forrester, C.W. '66
Frizzell, G.A. '67
Goldsmith, S.E. '64
Greene, R.D. '28
Hall, R.R. '53
Happ, S.C. '30
Haveron, W.E. '66
Hazlett, W.H. '58
Hejl, A.C. '55
Henning, J.R. '53
Hickel, N.R. '33
Jackson, G.C. '52
Kelley, W.F. '55
Lechner, D.L. '57
MacDonald, G.L. '69
Mannos, J.G. '71
McGauran, R.A. '61
Mohr, M.P. '49
Nagy, R.A. '59
Perkins, L.F. '55
Perkins, W. '65
Plummer, L.E. '59
Quallen, J.E. '72
Rempe, E.T. Jr. '24
Rochester, D.A. '62
Roshak, P.M. '59
Schindler, D.W. '50
Selser, J.E. '67
Smith, J.F. '48
Smith, F.D. Jr. '48
Smith, W.K. '58

Snyder, W.E. '49
Stewart, G.E. '48
Stout, I.L. '55
Voelker, R.F. '64
Wartluft, D.L. '60
Warzocha, K.J. '62
White, K.M. '74
Wilking, J.H. '56

MARSHALL

Astorg, R.G. '65
Babb, D.P. '80
Basham, H.W. '77
Blackburn, R.T. Jr. '54
Blevins, D.M. '70
Britton, G.R. '49
Bunch, R.G. '33
Chapman, J.H. '55
Cyrus, M.G. '29
Evans, W.D. Jr. '59
Fletcher, D.E. '65
Hazelndine, N.P. '34
Henderson, C.C. '30
Hodges, R.J. '63
Hylbert, M.A. '42
Johnson, M.S. '84
Johnston, H.L. Jr. '69
Kalayci, T.H. '61
Maynard, J.C. '47
Medors, J.L. '64
Murphy, B.G. '67
Ramsey, D.A. '53
Rayburn, C.M. '46
Smith, G.O. '53
Smith, H.W. Jr. '62
Smith, R.M. '47
Sowards, J.B. '49
Webb, D.G. Jr. '30
Wilkinson, R.E. '80
Winter, P.C. '31

MASSACHUSETTS

Bouley, A.L. '63
Brewster, D.T. '39
Canney, G.G. '26
Carpenter, E.S. '21
Crotty, P.A. '62
Davis, H.L. '64
Devaux, J.D. '61
Dodge, T.E. '60
Donovan, P.R. '67

Feindel, D.A. '62
Gagnon, R.T. '31
Hughes, P.W. '65
Johnson, F.W. '61
Kabat, J. '35
Kibbe, M.H. '31
Komic, J.N. '64
Maginnis, J.J. '15
McCowan, W.B. '36
Meehan, J.I. '37
Miller, J.C. '38
Minicucci, D. '69
Minkwitz, S.A. '67
Morze, A.F. '60
Oldach, W.H. '62
Paquette, S.R. '60
Reed, S.C. '38
Rice, J.E. '63
Sampson, H.J. '35
Shipman, L.C. '37
Stranger, H.L. '37
Tracy, R.H. '62
Ward, A.R. '64
Whitney, P.V. '56
Wilbur, H.A. '58
Zuger, A.P. '27

MIAMI

Artman, R.B. '82
Riddle, P.J. III '52
Rodriguez, A.J. Jr. '82
Vacca, W.E. '52

MICHIGAN STATE

Ash, F.C. '62
Beyer, A.R. '59
Cornell, T.B. '56
Dean, W.E. '56
Douglas, B.G. '61
Gregg, O.W. '61
Knisel, B.R. '58
Simms, R.J. '56
Warren, B.H. '56
Winquist, C.J. '56

MICHIGAN

Aldridge, C.W. '38
Beckman, W.A. '54
Bertelsen, M.H. '62
Bombray, M.F. '66
Brady, F.J. '30
Brown, D.G. '65
Cant, R.H. '65
Carscallen, C.H. '57
Chapman, M.A. '33
Clark, K.E. '58
Cova, J.C. '68
Danyko, D.D. '66
Devine, W.D. Jr. '60
Dukarski, M.J. '73
Dunning, J.M. '23
Feely, F.J. Jr. '38
Fuss, P.S. '54
Garner, J.E. '29
Gillette, B.L. '68
Gnewkowsky, S.M. '67
Grierson, R.A. '48
Grinnell, H.S. '25
Hagar, C.N. '37
Henderson, W.W. Jr. '49
Hofelich, R.M. '27
Holzhauer, R.N. '40
Jacobson, A.E. '74
Jacobson, H.K. '48
Janes, R.J. '41
Jensen, M.D. '83
Johnson, A.F. '48
Jung, R.H. '28
Kinnunen, N.H. Jr. '57
Knevels, R.H. '50

La Sage, D.P. '47
Ladd, J.W. '64
Lauria, L. '62
Lynn, J.E. '53
Magnus, A.H. '51
Mallinak, E.M. '63
Marble, J.D. '47
McDonald, A.L. '26
McDonald, N.S. '29
McGlaughlin, N.D. '31
Morris, R.H. '57
Murray, J.R. '40
Nelson, K. '39
O'Connor, T.W. '40
Powell, D.S. '67
Puffer, J.W. '61
Quinlan, M.C. '51
Reisdorf, C.H. '41
Robison, S.W. '27
Rockershausen, W.F. '56
Ruhl, R.C. '60
Shirley, R.A. '53
Shirrell, R.D. '47
Shoup, G.L. Jr. '47
Simon, W.S. '67
Simonds, C.D. Jr. '34
Sonnanstine, A.E. '67
Spindler, J.F. '48
Stoller, R.A. '48
Sturm, W.D. '56
Tessmer, R.G. '48
Thompson, R.E. '64
Thornley, R.B. '33
Timm, D.M. '78
Tinknell, C.C. '75
Trubow, G.B. '53
Waterbury, W.R. '43
Weston, L.D. '47
Whitman, G.S. '38
Wilkie, J.B. '39
Wilson, W.W. '47
Worthington, J.R. '51
Zahnow, O.C. '37

MIDDLEBURY

Baines, E.A. '40
Barber, A.T. '38
Barmby, J.G. '40
Black, D. '39
Donnelly, J.L. '25
Grant, R.H. '37
Happ, C.L. '25
Hasseltine, W.H. '25
Landon, E.F. '25
Powers, W.H. '35
Pratt, L.W. '37
Slipola, G.T. '30

MILTON

Badger, R.C. '56
Barranco, W.S. Jr. '65
Bashell, R.L. '69
Buending, W.A. '53
Campion, J. '68
Carle, N.L. '42
Cherichetti, G.C. '64
Gerhardt, S.H. '71
Hari, A.S. '65
Hein, L.K. '56
Jambrek, W.L. '59
Kuemerling, R.C. '52
Lapham, J.R. '69
Moss, M.S. '66
Muggler, T.C. '49
Nelson, C.L. '66
Oehrlein, B.M. '64
Politto, J.L. '66
Primrose, L.C. '70
Stark, J.H. '65
Stephens, B.W. '66

Honor Roll

Sunby, C.R. '47
Weaver, G.S. '50
Wheeler, C.L. '49

MINNESOTA

Clark, L.S. '20
Denison, C.A. '30
Gallagher, R.E. '21

MISSOURI VALLEY

Bakun, A.F. '46
Bextermeueller, D.B. '72
Blackburn, J.L. '49
Blum, C.E. '80
Brown, R.T. '70
Brown, R.C. '66
Burns, F.P. '69
Carver, J.H. '50
Chambers, D.L. '59
Chockley, R.S. '50
Combs, A.B. '78
Curry, T.G. '60
Dods, J.C. '53
Dowil, R.L. '68
Gehrke, C.W. '45
Gibilisco, J.D. '71
Hackney, E.S. '67
Izard, L.T. '50
Jager, K.A. '68
Keller, W.H. '70
Kleiner, G.A. '73
Knauss, L.T. '66
Korbecki, C.J. '47
Kropp, D.S. '70
Kusenko, P.D. '67
Long, R.H. '64
Mariolis, M. '69
Maschmann, M.W. '72
Miller, C.A. '83
Minor, D.W. '62
Odman, G.E. '63
Ort, R.R. '68
Porter, K.G. '74
Roth, W.H. '65
Rowlinson, J.A. '62
Schondel, G.E. '63
Spaulding, E.D. '50
Surles, L.E. '54
Thiele, D.L. '58
Vanselow, R.D. '50
Vaughn, D.A. '72
Wienke, R.E. '50
Young, K.L. '49

MISSOURI

Bax, E.R. '39
Busby, M.J. '82
Dumler, D.J. '62
Evers, H.L. '42
Ferck, W.G. '29
Gill, B.F. '46
Gwinner, D.C. '55
Hanlon, D. III '80
Jackson, G.H. Jr. '54
Kaemmerer, M.A. '37
Lewandowski, J. '80
Moore, J.A. '30
Murray, R.W. '50
Owen, C.M. '29
Reid, J.I. '36
Shepherd, J.E. '29
Skinner, R.L. II '82
Swan, J.A. '29

MT. UNION

Evans, J. '49
Hansen, G. '31
Kohl, M.F. '30
Krebs, F.J. '29
Leyda, G.R. '29

Mohr, J.M. '53
Silva, D.R. '49
Yaggl, J.S. '35

N. C. STATE

Amos, H.G. '78
Bland, M.A. '78
Boykin, J.A. Jr. '35
Coward, W.B. '38
Crews, R.W. '78
Galba, E.P. '31
Gardiner, T.B. '33
Hall, L.T. '78
Honeycutt, A.J. '35
Lanier, G.A. '79
Lindstrom, G.H. Jr. '30
Livera, A.L. Sr. '36
Lord, F.E. III '79
Lovelace, E.K. '36
May, W.L. '42
Schoof, H.F. '33
Shore, R.L. '78
Shore, T.J. '77

N.J.I.T.

Altman, S.J. '82
Bedrock, N.R. '82
Chayko, J. '82
Coleman, R.S. '47
Cox, R.J. '26
Dai Pan, M. '82
Delahanty, J.L. '47
Drake, V.O. '26
Elias, M.J. '26
Fehn, G.F. '36
Gauch, J.H. '50
Hofer, A.J. '34
Hurlburt, W.F. Jr. '32
Ismaili, S. '82
Kennedy, E.C. '42
Kupfrian, W.J. '30
Lemassena, R.W. '29
Mayer, R.E. '27
McGee, J.W. '82
O'Malley, T.J. '36
Penik, S.E. Jr. '82
Reibel, P.F. '47
Wolpert, F.S. '26

NEBRASKA

Cropper, W.H. '38
Denning, R.H. '38
Felton, H.W. '21
Gonzales, D.J. '36
Hay, B.H. '26
Jackson, J.C. '37
Jacobson, A.F. '24
Mann, M.E. '25
Mueller, J.W. '37
Mumford, W.G. '43
Schmid, M.C. '20
Tinstman, D.C. '38
Warren, C.V. '23
Whitmore, R.E. '25

NEW HAMPSHIRE

Coldwell, H.I. '31
Robbe, D.C. '33

NORTHERN

MICHIGAN

Dunn, M.P. '69
Gathman, M.A. '73
Lattrel, R.L. '74
Masters, G.E. '76
Showerman, J.B. '69
Smarr, S.R. '69
Zmuda, F.W. '69

OHIO NORTHERN

Allen, N.L. '50
Brown, L.T. '71
Buhl, J.H. '68
Carleton, R.B. '56
Clouse, G. '62
Colonna, J.G. '69
Cotton, L.T. II, '66
Craft, P.H. '59
Crosby, P.D. '48
DeWitt, R.E. '48
Derfel, J.N. '69
Emerson, J.W. '65
Fender, F.D. '48
Fingers, E.L. '82
Fornaday, G.T. '55
Fultz, B.V. '49
Funk, H.D. '56
Goldsmith, J.L. '74
Gorman, C.H. '69
Gunderman, G.P. '70
Hall, E.M. '54
Hansen, H.J. '46
Herman, J.H. '55
Higgins, T.H. '66
Hosack, J.L. '63
Iddings, J.W. '55
Jacobs, W.H. '46
Kepner, G.D. '66
Kistler, J.A. '56
Kronour, R.J. '71
Lawrence, D.G. '64
Leyda, J.P. '56
Marshall, J.D. '75
Miller, J.W. '55
Mitchell, J.L. '65
Needy, J.A. Jr. '55
Pfeiffer, M.A. '56
Raisson, H.B. '32
Remy, D.L. '69
Rose, P.M. '79
Schaffner, C.R. '72
Schneider, T.E. '85
Smith, D.M. '56
Stock, D.D. '65
Thomas, B.A. Esq. '73
Tutellian, E. '55
Van Dyne, J.R. '72
Vogt, T.F. '69
Weaver, W.W. '67

OHIO STATE

Adkins, E.H. '18
Aman, J.A. Jr. '81
Armstrong, G.S. '43
Aten, F.G. '40
Aylsworth, W.E. '57
Banyots, J.J. '68
Bauder, J.R. '55
Bucher, D.L. '66
Cameron, J.R. '39
Cesco, R.E. '69
Clark, E.W. '30
Connell, F.G. '21
Dove, T.M. '52
Drescher, C.H. '53
Duke, A.J. '40
Dumont, W.P. '16
Dutcher, C.K. '71
Egan, S.E. Jr. '60
Evans, J.J. '69
Foster, J.V. '62
Fraser, J.W. '55
Gerlach, J.G. '43
Gillespie, L.G. '49
Greene, H.L. Jr. '43
Grossman, R.A. '67
Harper, C.L. '40
Huber, C.C. '42
Jahn, A.C. '27

Kinzbach, J.G. '76
Kieder, J.E. '42
Klein, J.D. '53
Koch, G.G. '61
Lape, D.K. '47
Lemon, G.E. '31
Linn, G.L. '49
McLean, C.R. '53
Millous, G.F. '40
Mohr, P.D. '53
Morrison, R.L. '55
Oberlin, H.R. '54
Pate, D.C. '64
Potts, N.D. '28
Potts, W.D. '66
Ripple, H.L. '40
Roth, R.C. '58
Schulze, A.W. '75
Schuster, H.L. '45
Schwiesow, C.W. '33
Shafer, M.R. '29
Sims, J.H. '36
Slemmons, R.H. '24
Stegmiller, H.W. '32
Strong, W.B. '42

Cunningham, L.L. '29
Davies, A.E. '23
Deabler, H.L. '63
Degraff, B.A. Jr. '57
Dilley, C.E. '42
Ehmann, E.D. '59
Elwood, W.K. '47
Ferris, J.S. '39
Frail, R.A. '41
Franklin, R. '36
Graham, W.F. Jr. '63
Greene, M.F. '30
Guest, T.W. '47
Hadsell, N.W. '52
Hannie, D.E. '60
Hartshorn, H.M. '31
Hatch, E.R. '48
Hetz, S.C. '62
Hockman, W.H. '35
Hodges, R.E. '66
Homans, R.H. '33
Hull, H.A. '39
Humphreysville, J.E. '49
Johnsen, R.C. '58
Johnston, R.F. '34
Jones, J.R. '47

Rodie, W.B. '68
Roth, C.V. '51
Smith, H.A. '34
Smith, T.C. '49
Staples, J.R. '31
Strand, W.R. '48
Sullivan, L.D. '49
Swank, R.W. '49
Swisher, J.H. Jr. '47
Swisher, T.R. '51
Thaler, D.M. '49
Townsend, J.S. '39
Williams, R.T. '21

OKLAHOMA

Barnett, W.J. '32
Bell, C.S. '55
Bird, J.D. Jr. '53
Bishop, M.A. '77
Bott, D.F. '74
Bredren, R.H. '26
Bruschi, D.M. '65
Buley, B.J. '80
Burt, W.S. Jr. '61
Colbert, B.R. '48
Crnkovich, J.T. '48
Cunningham, E.C. '68
Cutright, C.L. '48
Daniels, C.E. '61
Doverspike, T.R. '70
Erbar, T.E. '65
Evatt, B.L. '59
Fleet, J.J. '24
Francis, J.E. '56
Gibbs, R.R. '51
Gordon, W.T. '50
Haas, G.G. '67
Hicks, D.T. '63
Huddgens, R.V. '49
Johnson, D.K. '27
Kallenberger, P.C. '70
Kelly, G.C. '63
Knezek, E.S. Jr. '54
Lenau, C.L. '28
Link, H.W. '49
Lucy, R.F. '51
Messer, S.D. '57
Meyer, P.B. '55
Miles, J.R. '64
Murphy, E.A. '73
Payne, W.B. '62
Pitts, W.O. '48
Rikli, C.A. '67
Schendel, T.E. '52
Sharp, G.H. '49
Slayton, J.A. '72
Swimmer, M.O. '62
Thomas, J. '48
Travis, D.E. '67
Trolinger, S.C. '70
Tryon, J.T. '66
Turner, A.C. '64
Vassilakos, D.G. '70
Walker, R.D. '50
Welch, W.F. '35
Williamson, T.R. '79
Woody, W.P. '62
Zust, R.A. '23

OREGON STATE

Alderson, R.L. '64
Berg, G.D. '76
Boutwell, M.N. '79
Bree, J.L. '50
Brock, R.L. '47
Carpenter, L.H. '27
Carson, W.E. '33
Cummings, J.W. '59
Dexter, R.A. '60
Dietz, C.P. '70



Dr. Duane A. Dukes, Ohio State '69 is the recipient of John Carroll University's Distinguished Faculty Award for the 1988-89 academic year. The award is based on excellence in classroom teaching, scholarship, advisement of students, and community service.

Wheelin, T.J. '34
Whipple, P.S. Jr. '56
Wicks, C.H. '22
Wooley, C.E. '36
de Melker, B. '30

Kehrer, V.J. '38
Kepner, H.M. '56
Kepner, P.R. '51
Lawson, K.S. '51
Lovell, E.M. '33
Lukas, L.L. '42
Luthy, R.V. '39
McGarrity, W.F. '27
Merrill, J.B. '52
Mills, A.A. Jr. '37
Morrow, R.A. '55
Murdock, W.D. '28
Naylor, C.I. '32
Nyberg, M.W. '37
Ott, D.C. '31
Plunkett, J.A. Jr. '49
Polandick, C. '55
Pratt, S.F. '23
Quinn, L.L. '26
Recker, T.L. '35
Reiter, D.K. '59
Robertson, W.M. '23

OHIO WESLEYAN

Abel, K.E. '40
Band, N.E. Jr. '57
Barbour, J.D. '29
Beck, G.C. '40
Beghly, C.M. '27
Blind, H.D. '52
Brandfass, E.A. '28
Broberg, W.E. '47
Brown, W.M. '34
Burdge, M.A. '59
Burns, R.F. '32
Carlson, J.O. '38
Chenoweth, D.R. '40
Cole, E.B. '13

Honor Roll

Dolg, J.A. '47
Dunn, H.A. '42
Ferguson, R.R. '50
Gardner, J.J. '76
Gustafson, G.L. '57
Hagg, O.N. '23
Hammer, J.H. '59
Hawkins, D.L. '63
Hawley, N.R. '25
Helgeson, V.A. '25
Hieronimus, M. '75
James, H.L. '20
Joiner, J.D. '75
Jolma, L.N. '64
Joy, F.L. '29
Knowlton, D.L. '63
Kruse, J.W. '34
LeGore, D.D. '57
Lee, K.D. '77
Lewis, R.S. '81
Lidell, H.V. '32
Lieuallen, R.M. '58
Lieuallen, R.O. '58
Locke, D.E. '75
Lukasewycz, V.A. '78
Lund, W.H. '24
Manuel, J.C. '50
Moreland, H.M. '43
Morgan, J.N. '71
Murphy, R.M. '47
Parkhurst, N.P. '56
Phillips, J.G. '47
Ramerman, J.B. '73
Robbins, D.F. '72
Robinet, F.L. '75
Sanford, D.D. '47
Scholz, T.F. '75

Andrews, P.D. Sr. '30
Austin, B.K. '78
Bader, G. '23
Balkey, A.J. Jr. '55
Benford, J.G. '56
Bloom, R.R. '48
Boyd, G.H. '36
Breedlove, A.M. '77
Bright, W.J. '33
Brna, R.L. '77
Brower, R.F. '56
Brown, P.N. '47
Bruce, J.S. '53
Burkett, P.E. '36
Bushey, C.N. '36
Chadwick, J.C. Esq. '77
Chemerys, J.J. '47
Collins, E.W. '74
Colvin, D.P. '70
Coppola, G.G. '82
Crossin, J.A. '78
Custer, S.A. '41
Czajkowski, R.J. '75
Dean, R.C. '61
Deysher, J.E. '76
Doyle, R.P. '56
Dufford, J.M. '41
Dussinger, P.M. '81
Elchholtz, R.A. Jr. '70
Elcan, B.A. '79
Euler, R.J. Jr. '56
Feeney, J.V. '33
Fencil, L.R. '30
Ferguson, D.W. '54
Ferrari, R.A. '56
Ferraro, J.L. '57
Fisher, C.R. '74

Hinks, W.H. Jr. '42
Hinks, R.R. '42
Holland, W.F. Jr. '28
Houghton, W.R. '37
Jones, J.K. '26
Kissinger, G.D. '30
Kistler, R.D. '56
Kliegerman, R.E. Esq. '65
Kosinski, J.R. '66
Kowalczyk, R.J. '76
Kurkiewicz, R.M. '77
La Greca, R.J. '65
Ladley, D.O. '56
Laroche, J.J. Sr. '33
Lechthaler, R.C. '60
Leonard, R. '44
Lindenmuth, E.J. '28
Lindenmuth, W.E. '35
Lohman, D.G. '42
Lord, A.H. '62
Marozzi, E.V. '64
Marquette, J.W. '62
Martinez, M.A. '51
Mc Ambly, J.F. '33
McCurdy, J.A. '80
McHenry, J.S. '75
Meckes, R.A. '70
Megargel, C.E. '22
Metzger, C.H. '52
Mills, D.F. '47
O'Haren, T.J. '54
Packer, J.R. '80
Page, V.C. '37
Parmley, H.M. '28
Patton, J.M. '33
Peetz, E.S. '42
Phillips, W.L. '59

Selden, J.W. '36
Shaeffer, C.W. '30
Sigel, R.A. '32
Skoglund, J.W. '49
Smith, R.H. '54
Taite, M.S. Jr. '41
Thompson, R.D. '53
Vanvalkenburg, J.F. '40
Vohs, C.J. Jr. '75
Walker, R.A. '55
Wannemacher, P.S. Jr. '48
Warrender, W.F. '53
Wenger, J.A. '80
Wescott, G.T. '50
Wickersham, R.B. Jr. '80
Wilcox, R.L. '27
Williams, H.S. '35
Yeager, L.E. '76
Young, C.R. '66

PENN

Abel, A.E. '35
Bardwil, J.A. '47
Barnshaw, H.D. '24
Battista, C. '62
Bell, J.H. '47
Bentz, L.W. Jr. '45
Brown, W.R. '30
Bunzel, C.F. Jr. '54
Campbell, L.R. Jr. '47
Carmen, H.A. III '48
Chase, D.G. '53
Delamater, R.W. '26
Dipasqua, A.A. '48
Dunn, T.L. '51
Eckersley, R.N. '39
Grimaldi, J.T. '47

Meagher, E.A. '45
Meller, H.E. '46
Mitchell, C.H. '40
Mookaw, S.J. '52
Mokamura, R.M. '58
Pettitt, W.A. '37
Phillips, C.J. '25
Place, J.D. Jr. '38
Potts, A.J. '50
Puzio, T.J. '50
Ramin, W.H. '49
Reader, D.B. '55
Rech, W.F. '45
Renninger, F.H. '45
Ritchie, B.T. '60
Schweikert, D.K. '42
Scott, R.E. '26
Shaw, A.S. Jr. '47
Shawkey, D.W. '56
Skalsky, A.I. '61
Standish, L.J. Jr. '32
Stuart, P.A. III '69
Tracy, E.A. '58
Tucker, T.F. '46
Van Ranst, M.A. '34
Weidlich, C. '49
Wiltmer, T.H. '61
Young, J.K. Esq. '30

POLYTECHNIC

Hayes, E.G. '36
Laestadius, J.E. '36
Lawler, W.P. '33
Lee, F.L. '48
Stamaty, J.H. '43
Wandmacher, C. '45
Zemetra, M.J. '35

PRESBYTERIAN

Allen, D.B. '74
Axman, R.L. '72
Beckham, R.S. '28
Bell, R.W. '74
Blankenship, D.S. '28
Braswell, J.M. '61
Bruce, J.L. Jr. '64
Clary, E.G. Jr. '43
Clayton, M.D. '78
Culp, J.L. '37
Freeman, T.B. '51
Garrett, D.T. '61
Good, B.H. '32
Harding, E. Jr. '50
Harper, C.C. '60
Higgins, H.T. Jr. '46
Lanier, R.H. '78
Love, J.T. '75
McKie, A.R. '56
Pedicord, S.R. '51
Peebles, M.J. '52
Styles, W.B. '65
Sumner, R.C. '58
Timmons, R.K. Jr. '37
Tucker, C.R. '74
Varn, J.B. '74
Watts, C.A. Jr. '57
Williams, R.C. '62
Wilson, G.D. '39

PURDUE

Abrams, M.J. '71
Alexander, D.H. '65
Allen, C. '72
Allen, D.M. '77
Allen, E.N. '71
Allen, R.A. '43
Amsler, J.R. '68
Atkinson, G.J. '73
Baas, J.E. '65
Bauer, R.D. '73
Baumann, B.E. '66

Beeson, F.N. '39
Bianchini, G.V. '81
Bland, L.I. '59
Booty, R.A. '61
Bowers, J.A. '68
Brooks, J.A. '79
Byers, M.J. '66
Carney, R.F. '58
Chudek, C.W. '82
Clarke, D.W. '68
Cox, K.A. '72
Crugan, A.D. '69
Crory, S.F. '72
Cron, G.L. '69
Croson, E.A. '68
Cutshaw, J.W. Jr. '51
David, S.R. '73
Delaplane, K.S. '81
Dickmeyer, M.J. '82
Dollens, R.W. '65
Donaldson, B.A. '51
Earle, A.P. '42
Eickhoff, D.R. '64
Endres, R.O. '69
Eppler, G.N. '69
Fisher, L.A. '69
Ford, L.C. '72
Frankenfield, R.M. '69
Froman, C.A. '76
Gibson, R.L. '71
Giunipero, L.C. '67
Givler, M.C. '65
Goodrich, B.F. '78
Grossman, F.A. '39
Hansen, R.M. '75
Hasse, R.M. '76
Heginbotham, T.C. '80
Hepler, J.K. '55
Hesselberth, J.F. '59
Holmes, T.B. '76
Hood, G.A. '72
Hudson, C.E. '61
Hurt, C.D. '63
Ibbotson, R.J. '61
Jackson, A.C. Jr. '41
Jarvis, A.E. Jr. '67
Karpick, D.M. '71
Kauffman, J.T. '43
Klink, K.C. '79
Krampe, S.E. '69
Krejci, W.G. '67
Kreps, D.W. '72
Krol, S.M. '80
Krouse, R.E. '51
Kuchar, R.A. '58
Kutter, D.A. '63
Lamberson, A.L. '53
Lorton, R.E. Jr. '68
Mayer, J.R. '76
Marshall, C.A. '81
Mayo, D.E. '39
McDonn, M.H. '79
McDonald, W.G. '42
Mihalk, A.S. Jr. '68
Miller, S.N. '64
Miller, J.C. '73
Montgomery, G.L. '74
Morgan, D.R. '57
Murphy, P.F. III '69
Murphy, K.M. '75
Murphy, T.F. '79
Muth, W.A. '80
Newgard, J.R. '39
Nickerson, B.M. '76
O'Sullivan, T.M. '81
Oppenheim, R.L. '83
Oreffice, A.T. '81
Pearson, R.G. '67
Pierce, D.L. '57
Presser, E.R. '61
Price, D.A. '65



William E. (Bill) Young, Washington '46, Bellevue, WA, has been appointed superintendent of records for King County, WA. Recently, he was chosen Member of the Year by the Eastside Republican Club and Member of the Month by the King County Republican Club.



John M. Parisi, Lehigh '76, Boynton Beach, FL, has been appointed vice president/regional manager of the Coral Springs Regional Office of Gee and Jensen, Engineers-Architects-Planners Inc. of West Palm Beach. He has been with the company eight years.

Spriggs, D.G. '53
Stricklin, G.L. '68
Sturges, R.M. '38
Thornton, D.D. '53
Truttman, F.M. '48
Vaillancourt, D.R. '39
Williams, S.H. '74
Wilson, F.H. '55
Wolf, T.S. '73
Yonker, N.J. '80

PENN STATE

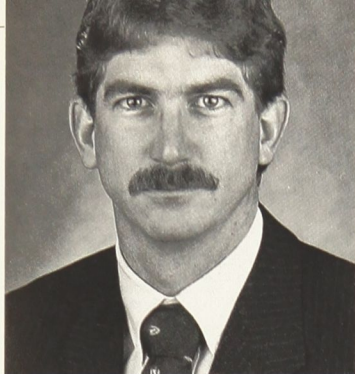
Adam, J.N. '30
Adams, A.H. '37
Amend, S.G. '82

Gates, A.R. '29
Gilbert, P.F. '41
Gombos, E.R. '65
Good, W.G. '58
Griffith, A.A. '58
Gromiller, J.W. '51
Hallman, K.H. '30
Hancock, R.F. '29
Harris, A.C. '32
Hartzell, M.A. '30
Heckendorn, J.G. '66
Heinze, D.W. '48
Hertner, H.H. '58
Hewitt, T.J. '72
Hicks, A. '36

Pischke, R.O. '50
Pizolato, M.R. '80
Predzin, J.L. '47
Prystowsky, E.N. '66
Putman, J.W. '42
Putney, D. '25
Radov, J.S. '46
Rankin, P.E. '23
Reichenbach, N.H. '21
Rigney, J.J. '78
Rosen, W.P. '70
Russell, L.G. '39
Rutherford, J.J. '29
Scherr, C.A. '75
Schrom, D.A. '40

Hayes, J.C. '65
Horan, P.M. '49
Inshaw, W.R. '37
Jacoby, E.G. Jr. '61
Jaussi, W.F. '50
Johnson, G.S. '47
Kilgore, J.G. '68
Knox, C.E. '46
Knust, B.H. '42
La Sor, W.S. '28
Lantz, J.H. '35
Lindgren, O.W. '36
Lowe, N.B. '21
Lutz, C.J. '14
Maloney, W.G. '36

Honor Roll



Lynn T. Hall, N.C. State '78 has been selected **Master Salesman for 1987** by his employer, **Monanto Co.,** in recognition of his outstanding sales results.

Ragle, S.R. '69
Reeder, C.D. '72
Rice, J.D. '67
Rietz, G.P. '75
Rietz, R.W. Jr. '72
Rietz, R.E. '50
Robertson, J.A. '86
Robinette, G.W. '79
Sampson, J.R. '74
Sausaman, R.F. Jr. '64
Scala, V.E. '56
Schrader, J.D. '64
Schultz, S.A. '69
Schweikher, G.A. '78
Serafini, A.J. '62
Shores, S.D. '44
Shumaker, H.D. '82
Shumaker, W.A. '78
Shute, L.A. '63
Sinise, G.A. '70
Skaggs, J.H. '60
Smith, S.W. '75
Smith, T.D. '77
Smith, W.E. '71
Snow, R.D. '53
Sockwell, A.R. '80
Sprong, K.E. '78
Stafford, T.H. '66
Steward, C.E. '53
Stewart, R.A. '62
Stutsman, P.M. '47
Sum, R.N. '52
Svengalis, K.F. '66
Taylor, B.L. '42
Topel, R.A. '75
Waara, F.M. '56
Wachter, C.M. '68
Walker, L.J. '69
Wallace, P.K. '55
Wanders, S.P. '75
Warner, R.L. '76
Weinhardt, S.A. '72
White, C.R. '77
Wilkinson, E.C. '76
Williamson, D.M. '63
Young, R.A. Jr. '66
Yount, R.E. '75
Zezima, A.M. '68

R.P.I.

Austin, K.J. '74
Banks, C.W. '54
Beard, J.A. '78
Benzten, R.C. '48
Boileau, M.R. '82
Campaign, W.J. '72
Campbell, B.J. '80
Caola, R.J. Jr. '73
Carlson, H.E. '50
Daley, T.J. '54

Disanto, K.E. '87
Evans, M.D. '84
Fenn, W.H. '73
Fonseca, K.J. '77
Foster, E.W. Jr. '62
Friedman, R.A. '77
Gardner, J.L. '77
Green, A.C. '63
Greene, S. '85
Hayes, B.L. '69
Horbattuck, W.J. '80
Imbriale, D.J. '75
Jones, R.F. '74
Judson, H.C. Jr. '41
Kaiser, D.F. '75
Leone, N.L. '54
Lieberman, J.W. '77
Locher, J.W. '46
Long, G. '75
Mackey, L.B. '47
Martin, W.J. Jr. '75
Matia, M.J. '78
Merwin, W.G. '64
Olender, E.J. '67
Rappolt, J.F. '56
Reilly, J.M. '69
Rosenstein, E. '73
Ryan, K.C. '78
Simonds, D.R. '68
Smith, G.T. '43
Smith, M.W. '78
Smyth, D.N. '56
Stockert, P.A. '80
Vennett, R.M. '61
Wright, J.R. '78

RADFORD

Fisher, S. '82
Gill, R.M. '83
Hornsby, H.B. '80
McCarthy, S. '83

RIO GRANDE

Barksdale, J.W. '72
Colopy, C.S. '81
Drew, K.K. '75
Lloyd, H.B. '73
Neff, B.W. '78
Schafer, J.G. '79
Smyser, R.H. II '72
Soper, A.A. '73
Summers, T.A. '75
Williams, M.A. '79

RUTGERS

Aaroe, W.H. '38
Allen, F.H. '57

Asay, G.W. '33
Bauman, B.W. '77
Baumer, E.F. '31
Berry, C.A. '63
Blasi, M.G. '65
Britton, R.A. '68
Broeker, J.J. '75
Brofazi, F.R. '51
Cafiero, S.C. '78
Cheng, B. '69
Clabattioni, L.J. '78
Crecca, D. Jr. Esq. '47
Crossland, R.O. '58
Dean, J.E. '37
Dessel, D.R. '81
Deuschl, D.E. '59
Dreslin, W.J. '61
Drew, J.V. '49
Ennis, R.N. '53
Essig, J.L. '47
Fritts, T.W. '66
Gasparich, A.A. Jr. '50
Geck, R.C. '58
Gilde, L.C. '47
Goddard, J.H. '67
Gordon, J.F. '35
Gould, C.R. '63
Grosse, L.T. '53
Grun, J.L. '72
Holloway, G.E. '31
Hough, H.D. Jr. '31
Jaszek, A.F. '61
Johnson, L.E. '61
Kadey, F.L. Jr. '49
Killen, W.J. '51
Koft, B.W. '41
Kumasaka, A.M. '47
Kuszen, F.N. '37
Laird, E.J. Jr. '76
Leaming, T.F. '31
Leonard, A.L. '33
MacWhinney, K.W. '35
Magee, W.C. '69
Marino, J.G. '33
Matey, M.A. '68
Matlick, L.D. '73
Mielach, B.F. '51
Morse, C.B. '31
O'Gorman, K.E. '76
Oland, W.N. '34
O'Neill, J.F. '62
Ort, G.H. '31
Pannucci, J. '68
Petry, R.K. '31
Redegeld, J. '48
Ross, K.M. Jr. '39
Rosser, K.M. '75
Schaefer, W.H. '65
Shafer, K. '58
Sherwood, S.A. '41
Simon, M. '64
Smith, L.T. '31
Somers, G.M. '49
Spencer, F.C. '32
Steiner, J.R. '65
Strong, R.G. '49
Struthers, A.M. '31
Sun, W.S. '82
Taylor, H.G. '59
Thompson, E.H. '47
Tramontana, R.A. '61
Van Dien, F.F. '58
Wheaton, N.E. Jr. '31
Wheaton, R.H. '40
Wiss, R.R. '71
Zaparanick, R.R. '64

SACRAMENTO STATE

Brannon, G.A. '61
Carston, A.J. '63
Georgakakos, J.H. '63

Howell, C.D. '61
Howell, R.C. '62
Monk, L.P. '60
Rivas, R.F. '62
Sartini, D.G. '61
Sherwood, R.E. '67
Sipes, S.R. '63
Tellefson, R.W. '60
SLIPPERY ROCK
Carter, A.A. '79
Cherney, W.J. '78
Coulon, S.C. '78
Haines, C.C. '80
Kalisz, R.S. '70
Pickett, P.W. '80
Ruszkiewicz, R.C. '79
Yeaman, J.B. '77

ST. JOHN'S

Bradley, J.P. '35
Eccleston, H.H. '33
Westcott, C.T. '35

STANFORD

Bellows-Blakely, D. '70
Bloom, C.W. '47
Bradley, G.E. '25
Brown, N. '38
Campbell, K.W. '42
Carney, D.M. '63
Cash, J.H. Jr. '60
Conlin, W.R. '33
Cramer, T.D. '42
Danielson, S.L. '58
Duncan, H.M. '27
Frost, J.E. '48
Gard, J.H. '52
Gard, J.J. '48
Giffra, M.R. '37
Hancock, J.W. '55
Haserot, J.J. '52
Hayes, E.B. '31
Hayes, H.G. '54
Hopwood, G.L. '64
Hurt, A.C. Jr. '27
Irvine, E.E. '47
Klier, R.F. '60
Krawczuk, J.E. '58
La Husen, G.L. '47
Martin, D.B. '48
Martin, D.L. '47
McCourt, P.E. '56
Mills, E.V. Jr. '33
Mosiman, F.W. '17
Nordblom, R.H. III '80
Poore, J.A. III '62
Raby, J.C. '63
Richardson, E.H. '29
Robinson, G.C. '75
Russell, J.D. '30
Scatena, J.A. '29
Schmid, B.L. '47
Schmidt, T.F. '32
Schultz, N. '35
Schwartz, N.M. '69
Smith, R.C. Jr. '63
Sylvester, P. '50
Winther, R.H. '29
Yost, F.M. '37

Cummings, E.W. '63
Dupaola, J.J. '65
Ermisch, A.R. '26
Flanagan, P.F. '65
Forlund, D.C. '59
Geist, R.J. '63
Gibbs, J.R. '42
Goglia, M. '35
Goldfarb, C.M. '75
Grouls, D.R. '61
Hanson, R.L. '48
Hochstein, J.I. '70
Jendzelzyk, D.A. '80
Kaugerts, J.E. '60
Keown, R.T. '28
Kleiber, C.E. '26
Kraycir, J.R. '61
Lidstrom, J.A. '57
Mahan, R.A. '63
McCullough, W.A. '62
McKenzie, A.A. '59
McKimm, T. '61
Meltzer, L.A. '68
Natanson, P.S. '68
Oliver, B.H. Jr. '26
Payne, W.M. '45
Restivo, G.M. '76
Roosevelt, J.G. '67
Schiedeg, C.P. '66
Schutte, W.G. '70
Skoblar, L.T. '66
Sommargren, G.E. '64
Stemmle, R.W. '59
Stengel, C.W. Jr. '40
Straussman, R. '81
Talbot, J.D. '63
Tarnawsky, K.G. '79
Vikjaer, E.A. '78
Wilcox, P.J. '63
Wood, R.A. '36
Wright, J.V. '71
Wuest, H.J. '50
Zwack, R.T. '26
van Everdingen, J. '62

SYRACUSE

Carriagan, W.J. Jr. '53
Cockrell, R.A. '26
Countryman, D.J. '37
Cusumano, J.F. '48
Dunn, J.F. '43
Ferry, E.M. '29
Hintermister, F.A. '51
Letteney, E.J. '25
Merrick, W.R. '37
Michalec, G.K. '48
Murphy, F.D. '49
Pattitocci, J.V. '35
Perry, R.W. '53
Rapp, G.H. '29
Remy, C.N. '45
Shattuck, L.B. '26
Tague, W.F. Sr. '40
Thompson, W.P. '25
Truncer, J.J. '26
Wells, T.F. '57

TARKIO

Cox, D.J. '70
Kramer, K.A. '71

TOLEDO

Ackland, T.R. '60
Adams, D.A. '64
Anderson, R.T. '52
Aredy, J.M. '52
Beddoes, G.A. '81
Beiler, B.J. '37
Biniker, N.J. '75
Boor, R.L. Jr. '55
Braun, R.D. '58
Brooks, E.C. '37
Bubb, M.E. '80
Coen, W.P. '50
Dean, G.C. '42
Dennis, K.B. '79
Dunn, J.P. '66
Escott, J.J. '68
Frey, J.R. '46
Fruth, L.L. '69
Gilzow, C.A. '63
Gray, D.A. '58
Hagele, R.G. '49
Hettrick, H.H. '37
Hill, P.M. '67
Hutchinson, J.R. '62
Kreutz, C.L. '74
Lange, W.H. '59
Layman, R.C. '74
Martin, B.A. '68
Mathies, W.F. '61
Merritt, C.E. '41
Moran, J.P. '63
Myers, J.S. '61
Myers, W.G. '47
Nachman, J.F. '38
Niedzielski, J.C. '79
Perry, E.W. Jr. '66
Poirier, T.C. '62
Redfles, D.E. '62
Redmond, R. '65
Restivo, J.F. '75
Root, R.C. '64
Rutherford, J.W. '55
Salem, O.S. '72
Schwind, J.P. '75
Stall, H.P. '61
Stoeckley, J.T. '46
Towse, R.W. '53
Traudt, J.M. '74
Trepinski, C.P. '69
Veler, E.J. '52
Winters, W.R. Jr. '66
Zaenger, J. '56

TRI-STATE

Alfieri, J.E. '53
Anderson, J.R. '71
Bishop, F.L. '51
Bovee, M.W. '82
Brown, L. '70
Bryan, R.R. '63
Buell, C.W. '37
Carter, T.L. '59
Cloud, E.L. '59
Coval, A.B. '37
Day, R.J. '65
Dedrick, F.R. '66
Eckert, C.E. '50
Forbringer, W.S. '46
Gabel, G.H. '38
Green, J.F. '42
Grimm, J.S. '59
Hamburg, H. '36
Heustis, L.G. '37
Jerome, D.D. '68
Joiner, T.H. '61
Jones, J.N. '57
Kelley, W.L. '43
Klee, J.J. '57
LeBaron, G.M. '42
Lettinger, R.D. '42
Levers, S.M. '42
Lewis, W. R. '82
Lienesch, G.W. II '41
Maxel, J.M. '57
McCormick, J.T. '35
Mortimer, J.W. '65
Mowat, D.H. '54
Myers, C.S. '72
Neumann, D.A. '70

Honor Roll

Memorial Gifts

Through the year members of the Fraternity and the general public as well make contributions to the Educational Foundation to memorialize or honor brothers and friends. The tax-deductible gifts are meaningful. They live on by underwriting the scholarship and educational programs of Alpha Sigma Phi, adding a new dimension to the lives of young men. These are gifts received during '87-'88.

Mrs. Alyce Allen in memory of B. Layton Allen, Kentucky '27, Park Hill, KY. *Myrtle S. Bradley* in memory of Earl E. Bradley, Alabama '30, Florence, AL. *William T. Brydges*, Illinois '26, Springfield, IL in memory of William J. Lang, Illinois '46, Spring, TX; *Quentin L. Robnett*, Illinois '62, Tucker, GA and Donald A. Snyder, Illinois '22, Neenah, WI. *Robert E. Cavallo*, West Virginia '57, Wantagh, NY in memory of Julius Scutari, West Virginia '60, Wethersfield, CT. *Richard R. Gibbs*, Oklahoma '51, Tulsa, OK in memory of David Fields, Oklahoma '23, Tulsa, OK; *Raymond E. Glos*, Illinois '22, Oxford, OH and *Trusten P. Wadsworth*, California '17, Berkeley, CA. *Raymond E. Glos*, Illinois '22, Oxford, OH in memory of John L. Carey, Yale '23, Taconic, CT. *Mrs. J. W. Kern* in memory of John W. Kern, Wagner '26, Victoria, TX. *Mrs. Rosemary Korbecki* in memory of C. J. Korbecki, Missouri Valley '47, St. Lou-

is, MO. *Robert W. Kutz*, California '67, Arcata, CA in memory of Gary A. Anderson, Westminster '71, Chandler, AZ; *Carl Schick*, California '42, Larkspur, CA; *Evin C. Varner*, Presbyterian '58, Pineville, NC; *Trusten P. Wadsworth*, California '17, Berkeley, CA and *Frederick D. Witzel*, California '28, Menlo Park, CA. *David L. Martz*, West Virginia '54, Bay Shore, NY in memory of Julius Scutari, West Virginia '60, Wethersfield, CT. *Mrs. Anna Mayer* in memory of Robert E. Mayer, New Jersey Institute of Technology '27, Cedar Grove, NY. *Stan N. Miller*, Purdue '64 in memory of Raymond E. Glos, Illinois '22 Oxford, OH. *Robert L. Quinn*, Ohio Wesleyan '26, Steubenville, OH in memory of J. Walter Severinghaus, Ohio Wesleyan '25, Scarsdale, NY. *Kevin J. Reidy*, California '58, Danville, CA in memory of Trusten P. Wadsworth, California '17, Berkeley, CA. *Mrs. Yvonne Ross* in memory of Kenneth M. Ross, Jr., Rutgers '39, Tempe, AZ. *Mrs. Betty Stan* in memory of George Stan, Marietta '41, Cincinnati, OH. *George B. Trubow*, Michigan '53, Wheaton, IL in memory of Raymond E. Glos, Illinois '22, Oxford, OH. *W. Russell Wood*, Washington '19, Laguna Hills, CA in memory of Vernon B. Sheblack, U.C.L.A. '26, Laguna Hills, CA.

Nitta, G.S. '69
O'Donell, W.J. '63
Orr, C.E. '39
Paul, A.J. '61
Rapp, E.J. '50
Reichert, R.F. '64
Remington, J.W. '39
Riegel, T.E. '68
Shoup, W.R. '36
Starr, R.F. '57
Stewart, J.I. '56
Stone, M.E. '73
Thomasson, F.T. '53
Webb, J.H. '62
Weigel, E.M. '36
Wheat, G.F. Jr. '50

Hickman, R.E. Jr. '66
Holmes, J.K. '41
Huening, P.C. '65
Klitzke, M.R. '51
Larson, G.P. '37
Lyons, F.T. '48
Madden, W.J. '58
McCann, A.J. '51
Milkey, H.E. '49
Miller, D.I. '65
Munroe, C.I. '47
Newton, E.H. '62
Nicholson, A.R. Jr. '53
Nickerson, T.A. '52
Olsen, A.K. '47
Palmieri, J.F. '32
Parks, E.W. '47
Stevens, D.E. '49
Stout, R.P. '50
Sullivan, J.F. '40
Sweed, E.B. '47
Taormina, E.R. '53
Veilleux, L.A. '34
Vendittis, D.J. '57
Virginski, W.B. '61
Zamparelli, J.F. Esq. '47

TULANE

Barlow, W.L. '64

Benoit, J.S. '83
Burton, W.D. Jr. '67
Crowther, P.E. '69
Gardner, J.B. '63
Harper, E.W. '64
Krupsky, J.W. '68
Laclede, R.P. '71
Stevenson, D. '62
Wright, T.L. '80

U.C.L.A.

Ackerman, L.C. '36
Badger, T.C. '45
Barnes, P.L. '58
Benoit, R.J. Jr. '49
Binford, W.M. '26
Branovan, M.J. '84
Butterfield, F.H. '40
Byer, E.A. '26
Cheney, J.A. '47
Corey, R.W. '50
Courtney, J. '43
De Haven, D.L. '57
Demmon, R.H. '26
Donegan, P.W. '54
Field, B.H. '26
Flickinger, P.E. '47
Glenn, H.L. '50
Gould, R.S. '26

Grube, K.P. '30
Hall, J.E. '32
Harrison, J.E. '49
Heins, D.R. '49
Holt, J.H. '26
Horgor, J.C. '53
Hoyt, J.R. '29
Jenkins, E.R. '35
Johnson, P.F. '30
Knox, F.L. '27
Kossack, W.C. '43
Koughan, W.M. '54
Krust, J.W. '48
Kuster, D.H. '50
Leonard, W.R. '34
McCranie, D.B. '54
Mitchell, H.L. '33
Nelson, F.H. '47
Nelson, R.A. '53
Nevarez, L.J. '57
Peter, W.M. '61
Panovich, M.J. '41
Pierce, W.R. '51
Reed, C.M. '66
Rush, W.J. '49
Russell, F.P. '55
Sanders, F.H. '49
Shaffer, J.R. '37

Ulrich, M. '26
Verzosa, D.D. '86
Wills, E.C. '22
Wong, C. '66
Young, F.W. '66

U.N.C.C.

Bernheim, D.M. '80
Washburn, V.W. Jr. '78
Wiley, J.O. '78

W. VA. WESLEYAN

Arnold, J.S. '36
Bentfield, E.S. '33
Brown, C.W. '43
Chapman, V.R. '33
Cody, N.F. '33
Cox, J.C. Jr. '38
Gaston, W.R. '48
Gay, R.S. '47
Hammer, A.T. '33
Hood, V.P. '51
Hopkins, R.C. '41
Long, W.P. '35
McCourt, E.H. '33
Metrolka, J.J. '55
Mickel, R.E. '48
Parilla, J.G. Esq. '59
Rafeld, J.W. '33
Simpson, W.W. '41
Walker, D. '37
Widney, H.J. '36

WAGNER

Barbes, J.D. '37
Bibbo, R.A. '62
Blaauw, E. '45
DeWaters, C. '52
Diaz, E.M. '50
Eggy, E.N. '62
Fraser, K.S. '80
Grunthaler, R.G. '73
Hoppe, E.O. '26
Johnson, W.E. '40
Klump, R.A. '52
Mullin, J.C. '38
Nelson, C.F. '70
Neuls, W.E. '63
Newberg, F.G. '62
Pagan, W.J. '58
Ranges, A.E. '55
Rogler, K.W. '38
Russo, T.J. Esq. '47
Schenck, L.C. '28
Schroeder, M.O. '39
Stevens, G.W. '65
Tosi, A.J. '50
Vaughan, H. '31
Volpe, W.A. '47

WAKE FOREST

Bullard, B.L. '49
Cannon, D. '62
Caputo, J.A. '69
Chapman, S.T. '78
Clarke, C.W. III '77
Crawley, R.J. '47
Crittenden, R.F. '79
Duncan, J.H. '47
Durham, L.D. '36
Ferrell, C.O. '55
Fisher, W.A. '45
Fleener, P.E. '80
Fritsch, A.J. '67
Gray, P.J. '65
Gross, J.R. '53
Hedgepeth, W.C. '52
Ketner, B.A. '56
Kotther, G.H. III '68
Leonard, C.W. Jr. '78

MacQueen, D.R. '77
Martin, R.M. '36
Matthews, T.L. '72
May, J.B. '76
Mewborn, N.M. '79
Osborne, D.F. Jr. '68
Passera, W.R. '82
Plybon, P.C. Sr. '36
Preutette, I.C. '46
Rogers, E.K. '50
Ryan, J.T. '59
Seen, S.F. '54
Shaw, M.D. '66
Siska, B.D. '75
Small, L.C. '51
Small, M.J. '46
Smith, D.C. '79
Smith, R.I. '32
Stephens, G.K. '81
Turner, J.C. '52
Warren, J.T. '79
Williams, C.E. Sr. '49
Woodward, R.C. '49
Yeatts, R. '59

WASHINGTON UNIV.

Mitchell, G.L. '61
Steinmann, D.H. '53
Striker, E.A. '53

WASHINGTON

Angiuli, D.T. '83
Arvidson, C.J. '60
Bartee, J.J. '82
Batty, R.W. '65
Beall, J.H. Jr. '60
Berg, R.L. '76
Berglund, S.M. '69
Bestwick, W.W. '49
Bolam, J.W. '45
Bonaudi, W.C. '61
Borland, D.B. '73
Burr, W.M. '23
Burrows, K.G. '46
Chevalier, R.E. '42
Clark, R.W. '40
Clearman, J.F. '56
Cockburn, L.C. '43
Conner, C.F. '75
Cummins, D.C. '60
Damen, M.T. '76
Ditmars, I.D. '25
Dobson, D.C. '37
Dobson, J.W. '26
Doherty, M.J. '73
Dressel, H.H. '47
Erickson, A.J. '37
Everett, L.H. '70
Fahn, M.L. '71
Fellows, R.A. '70
Fenstermaker, A.T. '73
Fesenmaier, V.L. '31
Fiebig, C.A. '80
Goodfellow, J.P. '45
Graf, R.L. '54
Hammann, P.L. '75
Harris, E.M. '47
Harvey, W.W. '35
Herr, B.N. '41
Herron, J.C. '27
Hickey, L.M. '35
Hutchinson, W.B. '29
Johnson, S.R. '29
Kennedy, H.G. '36
Kennedy, J.E. '50
Kleinodner, H.L. '35
Kuhn, S.G. '76
Landon, F.J. '35
Lauber, C.D. '45
Lee, R.W. '68
Loverich, E.T. '35

Honor Roll

Maloney, R.M. '40
Martin, T. '51
McClarren, R.H. '25
McHugh, J.J. '20
Meredith, J.E. '54
Merrill, J.M. '39
Miller, C.S. '58
Myers, J.S. '31
Nash, C.H. '42
O'Hara, T.R. '78
Passmore, R.O. '68
Pearl, J.C. '62
Pike, R.W. '71
Powell, J.H. '43
Raichle, R.C. '40
Ramsey, R.E. '53
Redmon, N.A. '57
Rice, R.H. '42
Robinson, R.F. '42
Rudy, C.P. '37
Rue, W.R. '24
Sandifur, R.I. '68
Schlumberger, S.B. '79
Schwarz, P.W. '42
Seely, J.H. '51
Still, M.D. '75
Stitz, E.L. Sr. '30
Strecker, R.B. '78
Strugar, G.R. '57
Turner, C.P. '26
Wallace, D.A. '49
Wasley, W.F. '64
Wilson, M.H. '67
Wood, W.R. '19
Yeaman, J.H. '48
Young, W.E. '46
Zemack, W.W. '37
Ziegler, W.E. '38

WAYNE STATE

Adams, T.F. '56
Axel, H.C. '46
Bebb, J.W. '57
Campbell, M.E. '49
Carzoli, R. '50
Chance, J.H. '40
Chase, R.R. '38
Craft, W.H. '48
Earl, W.F. '51
Gaberson, H.A. '51
Gannon, P.W. '52
Gardner, C.W. '51
Hill, J.C. '57
Hotchkiss, G.D. '56
Ingles, E.C. '49
Jones, L.E. '48
King, D.F. '54
Lancina, R.L. '60
Langtry, E.R. '38
Larsen, R.C. '41
Leonard, J.K. '52
Macphee, W.D. '49
Mondro, J.M. '65
Monnett, R.L. '51
Nelson, A.L. Jr. '38
Nelson, R.J. '38
Orlans, J.H. '69
Salton, R.F. '43
Scott, T.M. '38
Selden, R.E. '56
Shedy, J.E. '67
Sincock, F.A. '50
Stevens, W.D. '56
Tropea, J.L. '58
Walas, T.E. '69
Watt, W.D. '67

WEST VIRGINIA

Ayers, W.E. '51
Cavallo, R.E. '57
De Vol, H.A. '31
Faddoul, J.R. '62

Ferguson, R.K. '52
Giourgas, M.S. '50
Hardison, C.C. '58
Leiphart, C.D. '31
Mangus, J.L. '50
Mankin, W.W. '33
Martz, D.L. '54
McCaskey, A.E. Jr. '31
Mills, H.A. Jr. '52
Toompas, E.A. '47
Trenton, A.F. '48
Woy, J.B. '48

WESTMINSTER

Anderson, D.A. '51
Bingham, W.K. '47
Boak, J.D. '49
Bobst, L. '56
Bosse, T.K. '70
Briggs, A.H. Sr. '76
Burr, D.H. '76
Calvert, R.C. '64
Cheeseman, R.E. '46
Chew, L.R. '72
Dahlburg, D.R. '39
Delo, G.L. '75
Druce, T.W. '81
Duffey, H.L. '42
Eckles, T. '47
Farner, D.M. '83
FERENCE, W.J. Jr. '84
Fetters, N.C. II '63
Field, D.W. '64
Fiscus, P.R. '42
Fuller, J.R. Esq. '71
Furmanek, M. '81
Garvey, K.J. '75
Gates, B.D. '57
George, R.D. '61
Gittings, S.R. '77
Griffith, J. '49
Hart, G.R. '43
Hayden, C.A. '81
Heintz, J.D. '79
Herchenroether, D.D. '77
Herchenroether, H.C. Jr. '32
Herrick, G.H. '52
Hildebrand, C.H. '44
Holub, F.J. Jr. '42
Hutchison, D.L. '41
Jamison, W.N. '39
Johnston, R.L. '71
Keaton, R. '82
Kegel, W.C. '48
Mansell, J.L. '51
McWilliams, J.E. Jr. '49
McCreary, J.C. '42
McCullough, T.L. '57
McKenna, R.X. '81
McQuiston, V.G. '75
Merwin, R.L. '51
Morris, G.B. '50
Muchow, W.P. '64
Navarra, F.H. '48
Nickeson, R.S. '39
Paine, F.V. '44
Pawlosky, F.X. '47
Pellat, R. '51
Pfaff, P.S. '75
Preston, R.G. '56
Raynor, B.H. Jr. '77
Repack, R.T. '76
Reznik, E.W. '48
Rickard, J.R. '54
Ritter, T.K. '74
Ruth, F.H. '47
Schaefer, R.J. '51
Scheid, E.R. '78
Scheid, J.E. '42

Schneckenburger, D.K. '73
Sexton, R.M. '62
Shane, S. '52
Sheehan, J.P. '77
Sheehan, R.M. Jr. '76
Shirey, L.W. '47
Slonaker, P.M. '81
Smith, A.D. '66
Smith, H.W. '63
Strouss, J.M. Jr. '40
Toporcer, L.H. '54
Tunmore, E.R. '64
Varone, R.D. '67
Wagner, W.B. '52
Watkins, W.E. '51
Wayle, J.A. '77
Wayman, T.D. '82
Wharton, H.V. '42
Williams, J.L. '39
Wilson, D.A. '68
Wilson, T.E. '49
Winn, G.B. '79

WIDENER

Alexander, J.V. '75
Aron, L.W. '70
Bailey, J.W. '78

Banagan, W.J. '80
Brekne, S.A. '77
Buckley, R.R. '78
Cowlright, J.W. '64
Crampton, C.F. '76
Detskas, R.T. '68
Dixon, F.E. '73
Eichlin, B.J. '84
Erismann, C.A. '73
Evans, A.G. '62
Fuini, D.L. '64
Haffey, J.F. '79
Hargadon, J.J. '73
Klein, S.M. '74
Lawton, L.E. '64
Linal, A.Z. Jr. '68
Littman, C.A. '63
Lotter, G.C. '66
MacFarland, J.W. '65
Marks, J.J. '64
Nadig, C.C. '62
Petkov, A.A. '62
Pfeifle, W.G. '64
Pressman, H.C. Esq. '78
Priebe, D.A. '62
Quinn, K.B. '83
Rainey, R.G. '67

Ricci, V.B. '62
Robinson, W. Jr. '77
Sample, F.D. '67
Schweizer, B. '82
Shervin, V.E. '75
Sommerer, F.B. '79
Stanley, D.D. '73
Sullivan, J.J. '79
Treat, R.J. '72
Valent, T.F. '65
Zeller, G.W. '62

WISCONSIN

Brace, D.O. '20
Chase, L.P. '20
Dougherty, G.H. '30
Maercklein, R.W. '36
McGurn, W.E. '28
Pinther, H.O. '16
Stevens, C.E. '33
Sullivan, G.R. '29
Sullivan, J.F. Jr. '21
Taube, K.D. '52
Tauber, P.W. '23
Voigt, P.F. '31
Waskow, W.L. '28

Yegen, P. Jr. '17
WOFFORD
Cooksey, J.L. '52
Gaines, W.P. '60
Horton, T.B. Jr. '40

YALE

Bovard, R.O. '32
Calfee, J.B. '32
Eames, E.H. '23
Elton, J.E. '26
Flint, B. '42
Foertmeyer, W.L. '40
Frost, R. '40
Good, P.S. '41
Kohman, R.N. '40
Korn, H.J. '35
Madison, W.N. '23
Mennel, W.C. '37
Murphy, A.K. '31
Samuelson, A.W. '43
Shuman, E.S. '43
Taylor, F.H. '37
Tweedy, R.S. '35
Wilson, J.O. '35
Withington, N.E. '26

Eighteen brothers celebrate 75 years

Seventy-five years ago the "Old Gal" accepted two new chapters: Nu at the University of California, Berkeley and Xi at the University of Nebraska. The Initiation Class of 1913 includes the following eighteen brothers who are now celebrating their diamond anniversary of membership in Alpha Sigma Phi:

Edward D. Cleary
Ohio Wesleyan '13

Ernest B. Cole
Ohio Wesleyan '13

James H. Day
Massachusetts '13

Earle S. Draper
Massachusetts '13

John H. Engel, Jr.
Michigan '13

Ewald U. Klumb
Wisconsin '13

Shamus O. McFadden
Michigan '13

Eldon S. Moberg
Massachusetts '13

Thomas W. Perry
Ohio Wesleyan '13

Wesley W. Polk
Illinois '13

Harry E. Roethe, Sr.
Wisconsin '13

R. Warren Sheedy
Washington '13

William A. Slyh
Ohio Wesleyan '13

J. Raymond Smith
Ohio Wesleyan '13

Clyde M. Stanley
Ohio Wesleyan '13

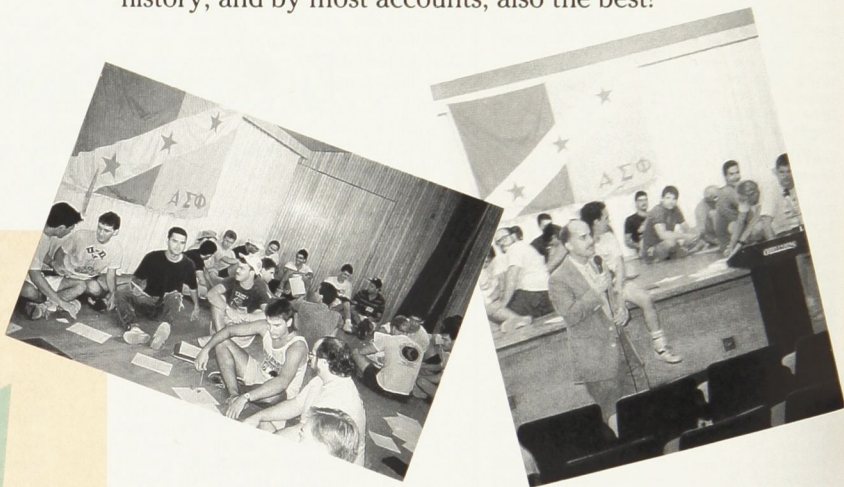
Theron D. Weaver
Michigan '13

G. M. Wells
Washington '13

W. C. Woodford
Marietta '13

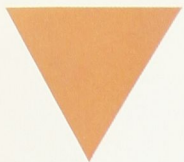
Commitment to Excellence

Over 250 undergraduate and alumni leaders met in Columbus, Ohio, at The Ohio State University from August 10-14 for the 1988 National Leadership Conference & Convention. It was the largest conference in the Fraternity's history, and by most accounts, also the best!



Several small group seminars were held throughout the conference, each geared to helping brothers improve their personal leadership skills and chapter operations. Seminars included Time Management, Scholarship, Legal Liability and Risk Management, Dealing with Apathy, Financial Management, Rush, Creativity, Alumni Relations, and more.


Conference sessions followed the "Commitment to Excellence" theme. Key issues facing all college students were addressed, as nationally recognized speakers were enlisted to challenge the brotherhood. Vic Boschini, Assistant Dean of Students at Indiana University, led a discussion of ethics in his "Maintaining Values in a 'Value-less' Society" session. Barbara Tootle, Assistant to the President at The Ohio State University, spoke on "Human Dignity in Men/Women Relationships." Mike Green, a nationally acclaimed expert on alcohol abuse prevention, challenged the brothers to regulate their alcohol use responsibly. National anti-hazing crusader, Eileen Stevens, shared the tragic story of her son's death from a hazing incident ten years ago. Mrs. Stevens is "pro-fraternity" and encouraged the brothers to develop pledge and brotherhood programs to build *positive* experiences. Chuck Loring, Past National President of Phi Sigma Kappa Fraternity and current President of the National Interfraternity Conference, followed up Mrs. Stevens' talk with a presentation on "Positive Membership Education."



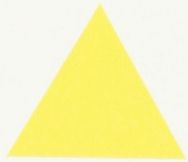
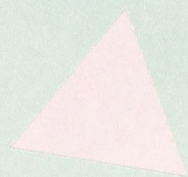
In addition to the busy schedule of educational sessions provided at the conference, one official delegate from every chapter participated in "convention business sessions"—the biennial responsibility of running our national fraternity. Delegates participated in one of four committees: Finance, Credentials/Resolutions/Law, Grand Council Nominations, or Chapter Standards and Ethics. The delegates tackled important issues shaping the future direction of Alpha Sigma Phi. Delegates voted to increase their own annual dues to the National Fraternity from \$50 to \$55 per man, and to increase the pledge fee by \$5 to \$40 per man. The delegates felt that these increases would help the Fraternity continue improvements in important operations and services. A new Code of Conduct for chapter member behavior was passed, as was a requirement that all

pledges achieve a 2.0 grade average before initiation. A comprehensive policy on alcohol use was passed which stressed limiting legal liabilities, and eliminating unlawful and unhealthy alcohol usage. The delegates unanimously approved the Fraternity's new excellence standards program, "Roadmap to Success," as a way for every chapter to make its own *commitment to excellence*.

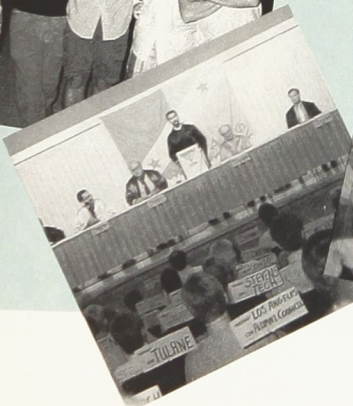
The delegates unanimously elected new officers to the Grand Council. The terms of Grand Senior President Robert A. Sandercox, Bethany '51 and Immediate Past

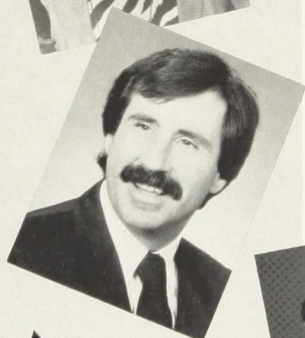
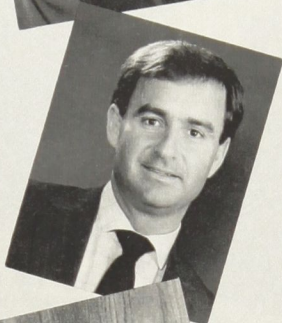
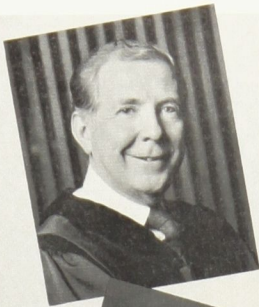


Over 250 undergraduates and alumni gathered at the Hyatt Regency-Columbus for the Final Banquet of the 1988 National Leadership Conference & Convention.

Conference delegates worked hard during the day in formal meetings and enjoyed brotherhood between chapters from "coast to coast" by night.





Featured presenters included, top to bottom, Ohio Supreme Court Justice Andy Douglas, Toledo '51 who spoke at the Final Banquet. Brother Douglas received the Distinguished Merit Award for outstanding profes-

sional achievement at the banquet. Other speakers, on "Positive Membership Education" was NIC President Chuck Loring, on "Hazing" was Eileen Stevens, and on "Alcohol Abuse Prevention," Mike Green.

Grand Senior President Donald R. Morgan, Purdue '57 expired at the convention. Newly elected as Grand Senior President was **Edmund A. Hamburger, Polytechnic '45**, as Grand Junior President was **James V. Fitzpatrick, Illinois Tech '47**, as Grand Treasurer, **Charles J. Vohs, Penn State '75**, and as Grand Secretary, **Dr. Dennis R. Parks, Baldwin-Wallace '72**. Newly elected to their first of two possible four-year terms on the Grand Council were **Stan G. Thurston, Iowa State '66** and **Dr. Larry G. Spees, Ohio Wesleyan '57** as Grand Councilors and **Robert G. Cabello, Eastern Michigan '70** as Grand Marshal.

While undergraduate leaders kept themselves busy with all these activities, a dedicated crew of fifty alumni were participating in the second annual Alumni Volunteer Conference. Chapter advisors, alumni corporation/association officers, Grand Province Chiefs, and other interested alumni learned—through workshops and from one another—how to help their local chapters grow stronger. "The key," noted one alumnus, "is to help guide—not control—our younger brothers in their goal *To Better The Man.*"



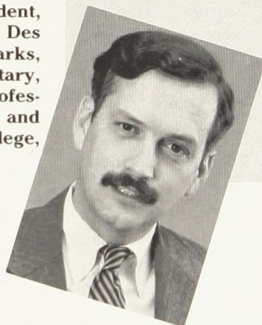
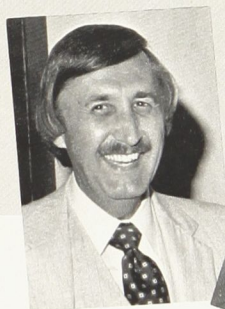
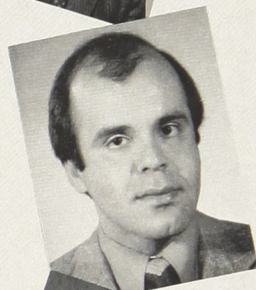
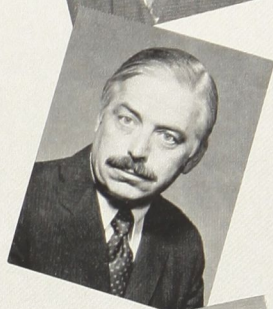
Craig Snyder, Penn State '85, top, receives the Frank F. Hargear Memorial Award from Grand Senior President Sandercox. Eta Chapter representatives, center, collected three awards on behalf of their chapter, including the Grand Senior President's Award, the Gary A. Anderson Pledge Education Award, and the Friends of Alpha Gamma Award for chapter member James B. McPike '87. Conference Coordinators, bottom left, were saluted for their hard work during the conference—left to right—Mike Williams, Penn State '87, Scott Kern, Illinois State '88, T.J. Mannix, Miami '86, Wes Owen, Iowa State '87, and Jim Brown, UNC-Charlotte '86.

The highlight of the conference was the Awards Banquet at the Hyatt Regency Hotel. The Featured Speaker for the banquet was State of Ohio Supreme Court Justice **Andy Douglas, Toledo '51**. Brother Douglas told the brothers that Alpha Sigma Phi could help them become anything they want to be. He credited the Fraternity for the many successes in his life. The Grand Senior President's Awards to the best chapters in the country at large and small Greek systems went to **Eta, University of Illinois** and **Beta Delta, Marshall University** respectively. The Frank F. Hargear Memorial Award recognizing the top undergraduate brother was claimed by **Craig Snyder, Penn State '85**.

Other chapter awards included Scholar

of the Year, **Michael R. Jakupca, Baldwin-Wallace '86**; Friends of Alpha Gamma, **James B. McPike, Illinois '87**; Grants-in-Aid, **Thomas M. Holz, and Thomas A. Rapa, Stevens Tech '87**; Tomahawk, **Iowa State University**; "Old Gal Gazette," **Marshall University**; Newsletter, **Cornell University**; Service, **Lock Haven and Marshall Universities**; Philanthropy, **Pennsylvania State University**; Gary A. Anderson Memorial Award (outstanding pledge education program), **University of Illinois**; and the Alpha Gamma Upsilon (most improved chapter), **University of Miami**. A special Grand Senior President's Citation went to **Penn State** for its dedication and service to the Four Diamond Cancer Fund.

Newly elected officers include: (clockwise) Edmund A. Hamburger, Polytechnic '45, Grand Senior President, is a member of the law firm of Mitchell, Silberberg and Knupp in Los Angeles; James V. Fitzpatrick, Illinois Tech '47, Grand Junior President, owns a thoroughbred horse farm in Ocala, FL; Robert G. Cabello, Eastern Michigan '70, Grand Marshal, is Vice President of Student Services, Delta College, University Center, MI; Charles J. Vohs, Penn State '75, Grand Treasurer, is Vice President of Cape Cod Bank and Trust in Hyannis, MA; Dr. Larry G. Spees, Ohio Wesleyan '57, Grand Councilor, is Professor of Education and Psychology, Rio Grande College, Rio Grande, OH; Stan G. Thurston, Iowa State '66, Grand Councilor, is Executive Vice President, Life Care Services Corporation, Des Moines, IA; and Dr. Dennis R. Parks, Baldwin-Wallace '72, Grand Secretary, is Associate Dean and Associate Professor of the College for Graduate and Business Studies, Lake Erie College, Painesville, OH.



Alpha Sigma Phi's annual leadership conferences would not be possible without the generous support of alumni gifts through the Alpha Sigma Phi Educational Foundation. These conferences, described by many young men as "the most positive experience of my life," help build character, teach leadership, and enhance the excellence mission of every chapter. The 1989 National Leadership Conference will be held at Indiana University on August 2-6. Exciting programs and an endless supply of brotherhood await alumni and undergraduate brothers, alike. Plan now to attend!

