

Summer 1993

## Celebrating 150 years of brotherhood

The year was 1845. Almost 150 years ago.

In American terms, that's ancient history.

James K. Polk was president. The Western Expansion was in full drive. A battle was brewing among Southern and Northern states in the halls of Congress. And the real sounds of war with Mexico were about to begin.

But on a cold December night, three Yale freshmen met to outline the principles and ideals of a new Society. A Society founded to share and perpetuate itself through a unique, exemplary tie that binds its members for life.

It was then that Alpha Sigma Phi was born.

Today, more than 50,000 men have become part of the Mystic Circle, having pledged our honor to the high ethics and secret ideals of our Society.

We live in large cities, and small towns. In rural areas, and some of the most densely populated areas on earth. We live in all 50 states, and many other nations.

But we are all linked as Brothers.

Celebrating the birth of this phenomenon we call Alpha Sigma Phi has posed a challenge as diverse and broadly spread as our members.

For the past two years, a special Sesquicentennial Committee has met to plan how Alpha Sigma Phi should commemorate our anniversary.

And the plans are almost as phenomenal as our Fraternity itself.

"Our goal was to design a celebration in which everyone could participate," says **Bob Shaw, American '84**, Sesquicentennial chairman. "We wanted to devise a systematic series of celebrations that help us commemorate the 150th anniversary of the National Fraternity, without interfering with the celebrations and traditions of our local chapters."

The committee, comprised of Fraternity alumni, undergraduate members, representatives of the Fraternity Headquarters staff, past Grand Senior Presidents and Executive Secretary Emeritus **Ralph Burns, Ohio Wesleyan '32**, has developed recommendations to be presented to the Grand Council and this year's National Leadership Conference.

Grand Historian and committee member **Bob Kutz, California '67**, says that marking the sesquicentennial is a time for all Fraternity members to recognize the uniqueness of our Brotherhood. Brother Kutz is also preparing the 150 year history of the Fraternity for publication.

"We have a rich and diverse history that parallels the growth and history of the United States," he says. "It's a history of which we should be proud — and build upon to make this a better fraternity for future generations of members."

The committee has been careful to outline recommendations to celebrate Alpha Sigma Phi's



sesquicentennial that can include all members of the Fraternity — regardless of their proximity to active chapters.

Essentially, the plans for celebration are as follows:

- \* *Commit to an official celebration period from January 1, 1995 through the National Leadership Conference & Convention in the summer of 1996.*

- \* *Develop a theme and sesquicentennial logo to be used throughout the celebration period.*

- \* *Develop sesquicentennial celebration guides for chapter and alumni organization use.*

- \* *Encourage use of the celebration theme in local chapter Founders' Day, Sig Bust and other festivities.*

- \* *Hold the 1995 national meeting in Charleston, SC, home of Alpha Sigma Phi founder Louis Manigault.*

- \* *Hold the 1996 national meeting in a site to be determined that would be in keeping with the sesquicentennial theme.*

- \* *Commemorate Founders' Day on December 6, 1995 at Yale, with a celebration to include a dinner, Black Lantern processional, and to site a marker noting the Fraternity's 150th anniversary.*

Details of these events and the development of support materials for them are presently being explored by Sesquicentennial Committee members and Headquarters staff. More

information is to be announced at the 1993 National Leadership Conference.

Special efforts are planned during the celebration period to capture in photography and video tape local and national events that incorporate the sesquicentennial theme. A visual collage is to be prepared and shown at the 1996 national meeting as the culmination of the Sesquicentennial.

Brother Kutz believes that the celebration period helps draw attention about how to ensure the quality of Alpha Sigma Phi's next 150 years.

"It's important to look at our past in context with the present and future goals of the Fraternity," he says. "The celebration period can easily launch us into a new era for Alpha Sigma Phi."

(Please turn to next page)

## On the Inside . . .

Two chapters charter, one as a rebirth, page 3.

Read what some of our chapters accomplished in 1992-93, pages 8-9.

The Great Flood of '93 touches home for an Alpha Sig, page 10.

Brothers on the move, see pages 11-14.

Need a job? Get your name in Alpha Sig Connections to let your brothers know, page 17.

Want to promote a chapter anniversary, homecoming, alumni event? Let us know so we can list your get-together in the calendar of events on page 20.



# The sesquicentennial of Alpha Sigma Phi

(continued from page 1)

Committee Chairman Bob Shaw agrees. "Marking 150 years of Alpha Sigma Phi gives us the opportunity to begin its future. Our unofficial theme for the 1996 NLC&C is 'New Directions.' "It's more than stopping to celebrate a moment in time. It's a time to gather with friends and celebrate life and our Brotherhood. Moreover, it's a time to reestablish the ideals of our Brotherhood. Alpha Sigma Phi is so diverse that we all have different fraternity experiences. The way we interpret its ideals may be different, but we are all bound by the Mystic Circle. The Sesquicentennial celebration is a time to reassess what the Fraternity is all about." Planning Alpha Sigma Phi's 150th anniversary touches many areas of the Fraternity's life and operations.

To make it successful — and meaningful — fundamental operations are being closely examined.

Alumni organizations in cities and communities both accessible and inaccessible to active chapters are being formed. In areas where interest in on-going alumni involvement is not viable, special efforts are being made to encourage celebration of Founders' Day.

Additionally, the promotion of scholarship, updating our membership manual "To Better The Man," starting an aggressive expansion program and launching a major capital campaign are all being studied to see how to best use our Sesquicentennial to set the stage for Alpha Sigma Phi's future.



In session, the Sesquicentennial Committee hammers out details and logistics for the celebration of Alpha Sigma Phi's 150th Anniversary.

And rechartering Alpha Chapter by December 6, 1995 at Yale University has also been a point of discussion at several levels of the Fraternity.

All told, the advent of Alpha Sigma Phi's Sesquicentennial has given rise to a number of issues within the Fraternity — issues that properly discussed and decided upon will directly impact how we march into the next century, and the positive new direction we'll take.

As plans are finalized, "The Tomahawk" and other Fraternity publications will make the information available.

"We want every Brother who wants to participate in our celebration to feel that he has a place where he will be welcome," says Shaw. "Every member has an important role to play in our Sesquicentennial. We should all want to celebrate. If we think about the wars, the economic depressions and the social upheavals through which our Brotherhood has not only survived, but thrived, we should be proud to celebrate."

And proud to set the stage for our future. □

By Jeffrey R. Hoffman  
NC State '76



Some of the Sesquicentennial Committee members at the Fraternity Headquarters. From left to right: Top row: Steven V. Zizzo, Illinois '84; G. Scott Grissom, Oklahoma '78. Second row: Edward W. Lenane, Plattsburgh '88; Robert J. Shaw, American '84; Ralph F. Burns, Ohio Wesleyan '32; John H. Luckenbill, Stockton State '84; Jack M. Merrill, Washington '39; Mathew A. Snethen, IIT '92; Edmund A. Hamburger, Polytechnic '45.

## THE TOMAHAWK

An Educational Journal  
Vol. 91, No. 4  
Summer 1993  
Member, College Fraternity Editors Association

The Tomahawk is the oldest college fraternity publication. It first appeared in November 1847 at Yale College and continued until the college suspended it in 1852. Since its revival in April 1909, it has been continuously published.

### Editor

John R. Chaney  
Indiana '67

### Managing Editor

Beverly J. Moody

### Design Editor

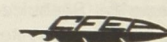
Jeffrey P. Schwind  
Toledo '75

### Production Coordinator

Debbie Pike

### Circulation

Christy Gray



### Contributing Reporters

J. Tyler Cox/Alumni News  
Wake Forest '75

Jeffrey R. Hoffman

N.C. State '76

Richard T. Ritter

Toledo '91

Ohio Wesleyan '93

Robert A. Wade

Bowling Green '83

Peter L. Tourtellot,

American '57

U.S. Postal Service, Statement of Ownership, Management and Circulation. Title of Publication: THE TOMAHAWK of Alpha Sigma Phi (USPS 007-964, ISBN: 0741-5435). Date of Filing: 9/1/93. Frequency of issue: Quarterly. Number of issues published annually: Four. One dollar a copy, lifetime subscription price, \$30.00. Location of known office of publication: 12 Lexington Boulevard, Delaware, Ohio 43015. Location of the headquarters or general business offices of the publishers: Same as above. Editor: John R. Chaney, 12 Lexington Boulevard, Delaware, Ohio 43015. Managing Editor: Beverly J. Moody, 12 Lexington Boulevard, Delaware, Ohio 43015. Owner: Alpha Sigma Phi Fraternity, Inc., 12 Lexington Boulevard, Delaware, Ohio 43015. Known bondholders, mortgagees and other security holders: None. Extent and nature of circulation—average number of copies each issue during preceding 12 months and (actual number of copies of single issue published nearest to filing date): 36,175 (35,138). Paid circulation, sales through dealers and carriers, street vendors and counter sales: 0 (0). Mail subscriptions: 33,958 (33,934). Total paid circulation: 33,958 (33,934). Free distribution by mail carrier or other means, samples, complimentary and other free copies: 1,517 (504). Total distribution: 35,475 (34,438). Copies not distributed: office use, left over, unaccounted, spoiled after printing: 700 (700). Return from news agents: 0 (0). Total: 36,175 (35,138). I certify that the statements made by me above are correct and complete. John R. Chaney, Editor.

The Tomahawk is published quarterly by the Citizen's Publishing & Printing Company, Ellwood City, PA U.S.A. for Alpha Sigma Phi Fraternity. One dollar a copy. Lifetime subscriptions \$30.00. All remittances should be made payable to Alpha Sigma Phi Fraternity, P.O. Box 838, Delaware, Ohio 43015 (614) 363-1911. Second class postage paid at Delaware, OH, and at additional mailing offices. Publication Number: USPS: 007-964; ISSN: 0741-5435. Produced by Maury Boyd & Associates, Inc., Indianapolis, Indiana.

Postmaster: Change of address form No. 3579 should be sent to Alpha Sigma Phi, P.O. Box 838, Delaware, Ohio 43015-0838.



## Epsilon Chapter at Ohio Wesleyan reborn

On April 24, 1993, Epsilon alumni and undergraduates gathered to celebrate brotherhood and the rebirth of the chapter at Ohio Wesleyan University. The chapter was initially founded in 1863, rechartered in 1963, but had been inactive since 1971.

After enduring twenty-two years without a chapter of Alpha Sigma Phi at their alma mater, Epsilon alumni were highly enthusiastic about the event. This excitement was equalled only by the undergraduate members of Epsilon Chapter whose two-year effort as Brothers of a Social Society (B.O.S.S.) had culminated in the evening's events.

Among the celebration's special guests were **George Lord, Ohio Wesleyan '61** (Past Grand Senior President and keynote speaker for the banquet); **Ralph F. Burns, Ohio Wesleyan '32**, "Mr. Alpha Sigma Phi," who provided special remarks; **Dr. Larry Spees, Ohio Wesleyan '57**, Grand Secretary, Master of Ceremonies for the banquet and assisted Executive Vice President **John R. Chaney, Indiana '67**, in presenting the charter; and **Richard L. Jackson, Ohio Wesleyan '50**, Grand Chapter Advisor of Epsilon Chapter.

This occasion provided a special opportunity for alumni to interact with the undergraduates and actively participate in the ceremony. The brotherhood took part in the senior service honoring graduating seniors and serenading the 1993 Talisman Rose Queen, Laura Williams, with a beautiful rendition of the "Sweetheart Song."

Additionally, the Epsilon alumni gathered for the first meeting of the fledgling Epsilon Alumni Association. Richard Jackson was named President of the Association and was commissioned to insure that everything possible



Eight of many committed men responsible for Epsilon Chapter's reactivation at Ohio Wesleyan University pose during the formal chartering ceremonies.

will be done to bring about reconciliation with Ohio Wesleyan University.

Excitement was not limited to Epsilon members alone. Members of the Gamma Pi Chapter at the University of Findlay presented the Epsilon undergraduates with the "Baby Blanket" and the Alpha Badge, both of which are given to the most recently chartered chapter. **G. Scott Grissom, Oklahoma '78**, made the trip all the way from Oklahoma and presented the chapter with glass etchings of the pledge pin and the crest. Farrell J. "Doc" Gallagher, father of **Scott Gallagher, Ohio Wesleyan '93**, presented the chapter with a plaque bearing the crest of Alpha Sigma Phi to serve as an annual brotherhood award honoring a graduating senior for exemplary contributions to the chapter.

At the climax of the evening's events was the presentation of two charters to the care of the undergraduates of Epsilon Chapter. The first charter presented was a copy of the original charter from 1863. The second possesses the names of the undergraduates initiated in 1993.

The Epsilon Chapter is proud to be the oldest active chapter of Alpha Sigma Phi. All alumni are encouraged to visit us and Alpha Sigma Phi Fraternity Headquarters when you are visiting Central Ohio

—**Richard T. Ritter, Toledo '91, Ohio Wesleyan '93**

## Central Michigan charters

After more than years of very hard work and dedication, the brothers of Phi Kappa Colony at Central Michigan University received their charter and were initiated into the Mystic Circle of Alpha Sigma Phi as the Delta Rho Chapter. Fifty brothers were initiated in the ceremony which took place on Thursday, April 29, 1993, and was carried out by Brothers **Robert G. Cabello, Eastern Michigan '70**; **Robert C. Look, Jr., Lawrence Tech '74**; **Jeffery S. Owens, Illinois '87**; **Edward W. Lenane, Plattsburgh '88**, and brothers from Gamma Zeta Chapter at Bowling Green State University.

The celebration of the chartering ceremony took place on Friday, April 30, at the Mount Pleasant Country Club. The ceremony was done as a traditional Alpha Sig black tie affair. There were many special guests in attendance at this grand affair, including, Grand Marshal **Mark Still, Washington '75**; Executive Vice President **John R. Chaney, Indiana '67**; Immediate Past Grand Senior President and Educational Foundation Trustee **Charles J. Vohs, Penn State '75**, and many of the presidents from the various fraternities and sororities on CMU's campus.

The evening's special guest speakers included Grand Chapter Advisor, Dr. Robert Cabello, and also the campus Greek Advisor, Joe Oravec. The table was then set and the ceremony's feast was met with a very tasteful prime rib dinner enjoyed by all. Finally, the long awaited unveiling and presentation of the charter was carried out by Brothers Still and Chaney and then the real celebration began.

The men of Central Michigan University are very happy and proud to become the Delta Rho Chapter of Alpha Sigma Phi. The brothers would like to extend a very special thanks to everyone who has helped them in any way, especially Chapter Leadership Consultant, **Mark Winston, Oregon State '88**. They would also like to extend a very special thank you to Grand Chapter Advisor, Dr. Robert Cabello. Bob has been with them since the beginning of this group. Bob's superb guidance and helpfulness has brought them to where they are today.



This group of young men at Central Michigan University proudly accepts the charter designating them as Delta Rho Chapter of Alpha Sigma Phi.





Peter Tourtellot is a partner in Anderson Bauman Tourtellot Vos & Company, an interim management company based in Greensboro, North Carolina.

## Business and bloodlines

The mom and pop store has something in common with McDonnell Douglas, Anheuser-Busch and Marriott Corporation. All of them are family-run businesses and though they make up the backbone of the private enterprise system, some experts believe they are fast going the way of the dinosaur.

Among other things, family businesses are threatened by divorce, the generation gap, merger mania and exorbitant estate taxes. Many stagnate from lack of fresh ideas; even a greater number wander about aimlessly without benefit of strategic planning.

Today less than one third of successful family businesses make it through the third generation, and less than half of those survive. More and more founders of family enterprises are opting to sell out, collect the fruits of their many years' labor and escape to a comfortable retirement.

In the late 1980s investors in the U.S. and abroad shopped furiously for small family businesses, sometimes with offers that equaled ten to 15 times cash flow.

Family and business don't always mix so well. Families are about people being themselves and feeling accepted for what they are. A business is run on results and performance. Success in

# 7

## DEADLY CHALLENGES

business doesn't mean success as father or mother or wife. The reverse is also true.

Here's a look at the seven most deadly challenges to family businesses:

**Sibling Rivalry** - The founder of a nationally-known rental firm generously awarded stock to his children over a period of years. Unfortunately, he was a bit too generous. The younger generation used their leverage to boot the old man out of the CEO slot, then began squabbling among themselves.

During the mid-1980s the heirs to a metropolitan newspaper fought so bitterly that the founder threw up his hands and sold the paper to a national syndicate.

Even when succession is clear-cut, the road isn't always so smooth. A serious rift could develop between father and son. In one case, the founder of a \$50 million business and his only son clashed over his choice of a wife. For more than 10 years, the father hasn't spoken to the son and gives him as little authority as possible. When the business is eventually passed onto the next generation either by death or disability, the son will be ill-prepared for the task.

Deciding which relative or which of their offspring should run the business after retirement or death is one of the most difficult challenges a

### LACK OF IDEAS

#### TAXES

#### MIXING FAMILY/DECISIONS

#### Sibling rivalry

#### DIVORCE

#### Nepotism

#### Lack of Planning

family business owner will ever face. To be effective, a succession plan must be done early . . . before a crisis precipitates it.

"The timing can be extremely critical," says Al Harris, a managing partner with Deloitte & Touche. "A company can be just a few years old, rapidly growing and needing a new level of younger management to continue that growth; or an older, more established firm may have a founder whose heirs have no interest in the business. In both cases, the future of the company depends on succession planning," he said.

A good succession plan should spell out the distribution of stock to the next generation, establish voting power and decide how the estate taxes will be paid. The plan should also make sure the heir-apparent gets the proper training and grooming for the job. But some owners simply can't bring themselves to do it. Retirement to them is a living death and they can't stand to be away from the business. Many refuse to admit

legal battle has broken out. When he dies, that battle will surely become a war that rips apart the company.

Little wonder then that prenuptial agreements in first marriages are starting to come into vogue.

**Nepotism** - A positive aspect of family businesses is the extraordinary amount of pride and loyalty found in its members. But sometimes this loyalty distorts the perspective and causes one to only consider the family's point-of-view.

Nepotism causes bright, skillful managers who aren't in the family to take their talents elsewhere. Moreover, problems caused by family members can be easily swept under the carpet. Outsiders are hesitant to confront the boss with news that a son, daughter or favorite cousin is falling behind on a crucial project or abusing drugs on the job.

Nepotism can also be a barrier to professionalism. If being a family member always counts more than professional skills and performance, then the company could soon be in serious trouble.

Even if nepotism isn't rampant in a family-run business, owners are usually reluctant to turn over much control to an outsider, no matter how qualified or brilliant.

**Lack of Fresh Ideas** - Tightly knit family businesses not only tend to keep outsiders from gaining too much power, but lack fresh ideas as well. A good way to ensure a fresh perspective and to create objective feedback is by forming an outside board. Such a board can sharpen a company's focus, serve as an arbiter for any internal squabbles and help evaluate the performance of the company.

"At first, outside direction can be painful for some family members, but it can bring much-needed discipline to a business, especially in budgeting," says Harris. A few years ago one of his clients added outside board members after a partial change of ownership. "As a result, the board has taken a new objectivity and removed some of the emotion from the decision-making process," he said. "Today the company is responding much better to changes in the marketplace."

**Taxes** - Estate taxes can be extremely heavy - up to 50 percent at the federal level. In fact, after the estate tax is paid or financed, the once thriving business may take on a quite different financial look. Parts of the business might have to be sold to pay off the tax. Indeed, the heirs may very well feel they are now in partnership arrangement with Uncle Sam. While the payments can be extended to 15 years, the interest must still be paid at current value.

(continued on next page)



## Alcohol use, abuse and management

You are the treasurer of your chapter. You and three other members of your chapter, including the president, allow your apartment to be used for a fraternity party. As the treasurer, you wrote a check from the fraternity account to pay for the alcohol. All members of the fraternity and their guests were invited. Approximately 200 minors (under 21 years of age) attended the party. The party was held in the evening. During the early morning hours of the next day a fraternity member, who was under 21, collided with a pickup truck killing one of the passengers and rendering the other a quadriplegic.

The fraternity party described above is surprisingly common at some universities. The fact pattern was also the subject of an actual case known as *Frasset v. Delta Kappa Epsilon*, 807 F.2d 1150 (3rd Cir. 1986). In the *Fasset* case, EVERY member of the chapter was sued. Everyone who provided substantial assistance was held civilly liable for the injuries suffered, including the treasurer, even though he did not attend the party, and various other members of the chapter.

## Business and bloodlines

(continued from previous page)

What is needed is some creative legal counsel which can then be carried out before the business founder dies or turns over the reins. Careful planning by a skilled attorney can go a long way in easing the burden of estate taxes.

**Lack of Strategic Planning-** Every business, family-run or not, needs a mission statement and strategic planning to survive the tough world of the '90s. It will keep the firm from drifting year to year, focusing only on keeping up sales and market share, or moving away from what the company does best. Vision is usually found in a company founder's head, but after that person is gone, it may be lost.

A strategic plan with a mission statement is a formula for success. It will allow family members to evaluate their own feelings about the business and its future and prevent legal battles and turf-fighting ahead.

So, what can a family-run business do to keep healthy and profitable generation after generation? In short, they should develop a succession plan, make sure the successor is properly trained, install an outside board of directors, draft a mission statement and strategic plan and don't be afraid to staff talented outsiders.

None of these are easy to do but once accomplished, they can allow a family-run business to be as professional and accountable as a public corporation while enjoying all the freedom of a private company. □

By Peter L. Tourtellot  
American '57

Because fraternities usually do not make a profit by selling alcohol, fraternities are considered social hosts. Most states have determined that social hosts ARE liable for injuries caused by intoxicated minors. This is known as "social host liability." In most social host liability cases, any person or organization can be held liable if they substantially contribute to or create an unreasonable risk of intoxicating minor guests. Simply put, because alcohol consumption by minors is a criminal offense, anyone who contributes to that consumption is posing an unreasonable risk on society. Therefore, the substantial contributor can be held personally liable for all injuries incurred because of his unreasonable actions.

It should be noted that although most states limits their social host liability to injuries caused by intoxicated minors, some courts, and indeed a growing number, have extended the social host liability to injuries caused by intoxicated adults. In these cases, courts have held that serving an intoxicated adult is unreasonable, wanton and reckless. See *Koval v. Hoffer*, 181 Conn. 355 (1980) for a case holding a social host liable for the actions of an intoxicated adult.

Fraternities should be cautioned. Due to the growing trend to find responsible parties, I believe that more states will try to extend their social host liability cases to accidents involving intoxicated adults. Therefore, proper and responsible supervision of all party attendees is required.

How does a fraternity, who still wants to have parties where alcohol is served, limit its liability? The answer is simple: **USE COMMON SENSE.** Each chapter should establish procedures whereby all attendees at the party are checked for their age. Those who are of age should be given some type of designation, i.e., a colored wrist band or waterproof stamp. Only those with the appropriate designation should be allowed to consume alcohol. Unless the fraternity chapter contracts with a bar or bartender who assumes liability and has adequate liability insurance, all parties should be conducted on a bring-your-own basis. This reduces the fraternity's exposure since the chapter did not purchase the alcohol—the injury-causing substance. All minors who are in attendance should be carefully monitored to ensure that they consume no alcohol. All adults should be carefully monitored throughout the party to make sure that they do not become intoxicated. In addition, nonalcoholic beverages and nonsalty snack foods should be provided. When attendees leave the party, the fraternity should make sure that appropriate transportation is provided, including a fraternity sponsored shuttle service by a driver who did not consume alcohol the entire evening. Each of these actions are reasonable steps that will reduce the likelihood of an intoxicated attendee injuring an innocent third party.

The key to alcohol management is to have a controlled (specific invitation only) party where 1)

USE  
COMMON



only those who meet the state minimum age are allowed to drink, 2) alcohol consumption is monitored throughout the duration of the party, and 3) each attendee is checked before departing the party to ensure that safe transportation will be used. Not only may these procedures protect you, your chapter, and our national organization from a multi-million dollar lawsuit, but one of the lives that it saves may be your own. □

By Robert A. Wade  
Bowling Green '83

**FROM THE AUTHOR:** This column is intended to assist chapters in developing risk management guidelines and policies. Although this column is intended to be helpful and educational, not every recommendation may be right for your chapter or situation. For example, the laws in your state or your school's policies and regulations may differ from the presumptions made in this column. Therefore, please consult with appropriate individuals before implementing any recommendation made in this column. Please send any questions or article recommendations to The Tomahawk Editor, c/o Risk Management Update, Alpha Sigma Phi Fraternity, P. O. Box 838, Delaware, OH 43015-0838.



## Bill Lubbers puts his money where his heart is

Sit down and talk with **A. William "Bill" Lubbers, Lehigh '31**, and his wife, Doris, and they'll make you feel like a part of a caring and interested family.

And in fact, you are: The Lubbers' version of the Alpha Sigma Phi family.

Lubbers is a solid, straight-forward man, who like his wife, Doris, a long-time American Red Cross volunteer, believes in giving something back.

"The Fraternity has always been a great interest," Lubbers says. "The people I lived with, I kept as friends."

Without hesitation, Lubbers recalls his pledge class by name and where each brother is today. And it's because of those friendships and because of Alpha Sigma Phi's mission, that he established the \$50,000 A. William and Doris M. Lubbers Beta Epsilon Chapter Endowment Fund.

Established under the guidelines of the Alpha Sigma Phi Educational Foundation, the Lubbers not only enjoy perpetuating Fraternity benefits, but enjoy certain financial benefits as well.

Lubbers established the Fund as a charitable remainder trust to benefit educational efforts of future members of our Lehigh Chapter.

A charitable remainder trust allows the giver to irrevocably contribute an asset to the trust while retaining the right to receive any investment income from the asset for life.

In the case of Bill and Doris Lubbers, their gift of \$50,000 in IBM stock produces double the income they would have received from regular dividends if they had retained the stock—income they will receive as long as they live. The



Transfer to Mizzou? The Fraternity has an immediate opening for a live-in undergraduate or graduate advisor for the Alpha Theta Chapter at the University of Missouri-Columbia. Applicants should have leadership capability and be willing to work intimately with a modest size chapter on a major research institution campus. In addition to living in a beautiful chapter facility, the live-in advisor may also be eligible for meals and tuition assistance. If you are interested, please contact Jim Reid at 1508 Watson, St. Charles, MO 63301, (314) 946-9559/Home, (314) 272-6190/Office, or the Fraternity Headquarters.

remaining asset is then passed to the Alpha Sigma Phi Educational Foundation to establish their named fund.

Charitable remainder trusts are fully approved by the Internal Revenue Service and encourage good people like the Lubbers to contribute to charitable organizations while they are still alive.

"It's a way everyone can win," says Foundation Vice President for Development **Steven V. Zizzo, Illinois '84**. "The Lubbers get to share their good fortune with Alpha Sigma Phi for generations, while receiving substantially more income because their asset is now invested over a variety of opportunities, not just a single stock—and they avoid the bite of capital gains taxes."

Bill Lubbers agrees. "If we had sold the stock, we would have taken a terrible rap," he says.

Any person who would like to establish similar funds are encouraged to contact Brother Zizzo. Under the Chapter Endowment Fund program a chapter fund can be created or added to with a minimum contribution of \$500. To establish a named fund, an initial commitment of \$10,000 is necessary."

"It's an individual decision with which one should be comfortable," says Lubbers. "If a Fraternity brother says he's going to do something for charity, I'd ask 'What about Alpha Sigma Phi?' But it's up to the individual to initiate the process because giving in this manner is so personal."

It's that personal touch and generosity of Bill and Doris Lubbers that ensure future Alpha Sigs the enjoyment of our Fraternity experience. An experience that lasts a lifetime.

By **Jeffrey R. Hoffman, N.C. State '76**

For information about how you can take advantage of the income and tax benefits of a charitable remainder trust or contribute to any form of planned giving to Alpha Sigma Phi, contact Steve Zizzo at 614-363-1911. Or write to him at Alpha Sigma Phi Educational Foundation, 12 Lexington Boulevard, P. O. Box 838, Delaware, OH 43015-0838.

## MANTLE OF HEROISM

Tarawa and the Struggle for the Gilberts, November 1943

*Michael B. Graham with a foreword by Ken Hechler*

Fifty years ago, American troops came perilously close to disaster on the Pacific's remote Gilbert Islands. Just before dawn on Sunday, November 20, 1943, Operation Galvanic was launched—the first major amphibious operation against Japanese-held islands. Over 100,000 men and the largest assembly of warships in history were in place off islands shielded by razor-sharp barrier reefs. An easy and "glorious" victory was anticipated in this battle, the symbolic first step toward Tokyo.

Confidence was high as the Americans boarded their landing craft. It seemed impossible that any living thing could have survived the intensity of the naval and air bombardment that had been aimed at these small spits of land for the past few days. But the Japanese had prepared well. Just a few hours later, at Tarawa Atoll, the confidence changed to horror as the amphibious vehicles were torn apart by murderous fire, and the Marines, forced to wade

ashore, were cut down by enemy machine guns. The few survivors who made it to the beach huddled behind a seawall amid piles of bodies and hideously twisted wreckage, numbed by the ferocity of the resistance.

Based on careful research of all published and unpublished sources—the first such synthesis of all available material—Michael Graham has written one of the most readable pieces of military history to be published in many years. The capture of Tarawa and Makin atolls was billed as a stunning victory, but the cost is questioned to this day.

**Michael Graham, Marshall '80** is a U.S. government foreign affairs officer specializing in the Middle East and South Asia. Graham holds a BA in journalism, an MA in international relations from Marshall University, and is a graduate of the Foreign Service Institute postgraduate school of area studies. He has edited a book on international relations and authored or edited articles on topics ranging from foreign affairs to the American Civil War. Graham lives in Maryland, just outside of Washington, D.C.

## Expansion a priority

Alpha Sigma Phi is embarking on a bold period of expansion! D. Todd Harris, UCLA '92 has joined the staff and is charged with expanding the number of undergraduate chapters. Todd is working to develop chapters using a strategic plan developed by Fraternity volunteers and staff. But, we realize that some very important opportunities may be overlooked if we rely solely on our plan.

Because of our past success in using students who transfer to another school or knowledge of highly qualified and motivated students at schools without an Alpha Sig Chapter or insight into a particular institution's situation, we continue to rely on your ideas, leads and networking for expansion opportunities. Should you want to assist with expansion or provide expansion leads, please contact Todd Harris at the Fraternity Headquarters.



---

# Omega Chapter

---

(The TOMAHAWK does not assume responsibility for the accuracy of Omega listings. Information from various sources is printed as it is reported to the National Headquarters for recordkeeping purposes. Ongoing efforts to locate brothers without mailable addresses often reveal names of those who have entered Omega. Some listings therefore are of brothers who have been deceased for some time, but are included for informational purposes and in tribute.)

**BUFFALO, GAMMA EPSILON CHAPTER:** James M. Mark '62, Horseheads, NY.

**CARNEGIE-MELLON, ALPHA GAMMA CHAPTER:** Donald Treon '27, Sunbury, PA.

**CARTHAGE, GAMMA BETA CHAPTER:** Raymond L. Bell '42, Quincy, IL.

**CHICAGO, CHI CHAPTER:** Frederick M. Noble '20, Palm Desert, CA.

**COLORADO, PI CHAPTER:** Edgar M. Wahlberg '19, Estes Park, Co.

**CORNELL, IOTA CHAPTER:** Rodney M. Tallman '53, Concord, CA; Joseph A. Gioia '38, Rochester, NY.

**DAVIS & ELKINS, GAMMA DELTA CHAPTER:** Gabriel Martinez '55, Cidra, PR.

**HARTWICK, BETA XI CHAPTER:** Paul J. Peknik '56, Rome, NY.

**HARVARD, BETA CHAPTER:** Clyde Comstock '28, Boynton Beach, FL.

**ILLINOIS, ETA CHAPTER:** James H. Nogle '24, Champaign, IL; Theodore W. Reineking '36, Arlington Hts, IL; Howard L. Santer '40, Pasadena, CA.

**ILLINOIS TECH, ALPHA XI:** Norman W. Carey '41, Sarasota, FL.

**IOWA STATE, PHI CHAPTER:** Ingwal S. Horgen '20, Harrisonburg, VA.

**KENTUCKY, SIGMA CHAPTER:** Robert C. McDowell '33, Bath, OH.

**LEHIGH, BETA EPSILON CHAPTER:** Andris Bikis '55, Nashua, NH; John B. McMurtrie '56, Williamsport, PA.

**MARIETTA, DELTA CHAPTER:** John B. Holst MD '29, Williamston, MI.

**MASSACHUSETTS, GAMMA CHAPTER:** Theo Zavorski '24, Easthampton, MA.

**MIDDLEBURY, ALPHA DELTA CHAPTER:** John J. Sheehan '25, Bronxville, NY.

**M.I.T., BETA BETA CHAPTER:** Aaron K. Redcay '34, Beverly Hills, FL.

**NEBRASKA, XI CHAPTER:** Warren H. Dunn '39, Omaha, NE; Heremiah Shumway '16, Hartington, NE.

**N.C. STATE, BETA ZETA:** Fred J. McGrath '43, Marietta, GA.

**OHIO STATE, ZETA CHAPTER:** Edward P. Cory '39, Cuyahoga Falls, OH; Arthur Jahn '27, Upper Arlington, OH; Neal H. Magee '29, Columbus, OH.

**OHIO WESLEYAN, EPSILON CHAPTER:** Robert L. Quinn '26, Steubenville, OH.

**OKLAHOMA, ALPHA ALPHA CHAPTER:** Glynn DeHaas '35, Drummond, OK; Donald B. Gould '25, Aurora, CO; Robert D. Walker '50, Edmond, OK.

**OREGON STATE, PSI CHAPTER:** Robert C. Burkhart '21, Seattle, WA.

**PENN, OMICRON CHAPTER:** John A. Brainerd '23, Lansdale, PA; Alden R. Gates '29, Hingham, MA.

**PENN STATE, UPSILON CHAPTER:** T. Stewart Goas '30, Mechanicsburg, PA; Alfred R. Hardtmayer '34, Cleveland, OH.

**PURDUE, ALPHA PI CHAPTER:** Randy L. Gibson '71, San Diego, CA.

**RADFORD, DELTA THETA CHAPTER:** William B. Butler '92, Richmond, VA.

**STANFORD, TAU CHAPTER:** Everett H. Claiborne '33, San Jose, CA; Wayne M. Reid '54, Olympia, WA.

**TRI-STATE, BETA OMICRON CHAPTER:** Douglas H. Mowat '54, Marysville, MI.

**TUFTS, BETA IOTA CHAPTER:** Leonard J. Bolger '40, Arlington, MA.

**WAGNER, ALPHA SIGMA CHAPTER:** Henry Cornish '42, Syracuse, NY; Lee Y. Davidheiser '33, Staten Island, NY; Walton G. Kibat '35, Staten Island, NY; Carl H. Ludders '29, Orchard Park, NY; Carl B. Voiges '22, Spring, TX.

**WASHINGTON, MU CHAPTER:** Wesley William Bergman '39, Longview, WA; Irving H. Frieze '31, Lacey, Wa; George A. Keeney '43, Mountlake Terrace, WA.

**WAYNE STATE, BETA TAU:** Alfred L. Nelson '38, Sarasota, FL.

---

## MEMORIAL GIFTS



The memory of brothers who enter Omega Chapter may be honored by contributions to the Alpha Sigma Phi Educational Foundation ... gifts that live on by underwriting the scholarship and educational programs of Alpha Sigma Phi.

Stan N. Miller, Purdue '64, in memory of John F. Savage, Toledo '51; Lawrence C. Ford, Purdue '72; Evin C. Varner, Presbyterian '58; and Gary Anderson, Westminster '71.

---

## HONOR GIFTS



Throughout the year brothers make gifts to the Educational Foundation "in honor of" another brother to commemorate a special event, accomplishment, or activity the brother may have taken part in. Public organizations also make gifts to the Educational Foundation "in honor of" a brother who may have performed a special duty for the organization but refused to be paid for it.

Anonymous in honor of Steven V. Zizzo, Illinois '84, Powell, OH. ☐

**WESTMINSTER, ALPHA NU CHAPTER:** Joseph H. MacKenzie '50, Wilmette, IL.

**WISCONSIN, KAPPA CHAPTER:** Grant H. Dougherty '30, Quincy, IL.

**WOFFORD, BETA PHI CHAPTER:** John R.T. Major '40, Columbia, SC; Joseph S. Reid Jr. '42, Woodruff, SC.

**YALE, ALPHA CHAPTER:** Miles E. Goodrich '17, Paxinos, PA; Chester H. Loomis '34, West Hartford, CT; Donald G. Smith '20, Irving, TX; Palmer York Jr. '36, San Francisco, CA. ☐



# Chapter Reports

## Chapter Reports

## Chapter Reports

## Chapter Reports

## Chapter Reports

## Chapter Reports

## Chapter Reports

Here's your chance to "visit" with the undergraduate chapters of Alpha Sigma Phi—through their review of recent activities and achievements.

Chapters welcome your visit in person. Check the directory in this issue for chapters near you. Give them a call and attend a meeting.

You can assist as a volunteer in the Fraternity's Province Program. Write Alpha Sigma Phi, 12 Lexington Boulevard, P. O. Box 838, Delaware, Ohio 43015-0838 for more information, or use the Volunteer form on page 14.

### Alpha Pi Purdue University

Our most noteworthy event this year was our successful Anchor Splash Philanthropy. The DG's participated in this event with us.

During this past year we qualified second for the Purdue Grand Prix. We were involved, however, in an accident on lap 30 and was unable to complete the race. Joe Balitewicz won the Friends of Rho Award at last year's National Leadership Conference & Convention. This year nine of our members will be attending the conference. Rush was a great success this year. We have 29 new members. Our house occupancy will be going up next year. With our G.P.A. improving from 4.49 to 4.588, our house has gone from 30th to 15th! Our Alumni Board gave us \$3,075 for scholastic achievement. We are planning to have another strong rush, keep improving our G.P.A., and have less defaulting in intramurals, in addition to improving our standings, this coming year.

### Beta Omicron Tri-State University

This past year the brothers put extra effort in everything that they did for the house. Much of this effort was directed toward becoming more organized and to make sure that everyone did their part for the house. Many things were done for the community such as a food drive, helping the Red Cross and providing a free "Haunted House" for the children of Angola. In other areas, we had seven new members join the house. This is due to the extra rushing directed by the Rush Committee. The Rush Committee is also working now to have a pledge class in the fall for the first time in several years. These new members are much needed since several brothers are graduating within the next year. Many

improvements have been made to the house this past year. The "Old Gal" received a new heater, stove, tile and carpet. We would like to thank the alumni for the financial help that went to benefit the house. Also, it was wonderful to see all of you back for this year's Spring Frolic.

### Beta Rho University of Toledo

This spring has definitely been a great one for the Sigs at the University of Toledo. Things really got moving after a fabulous initiation of 15 new brothers, bringing the active chapter to over 70 brothers strong. The activation was quickly followed by a Black Lantern Processional, the first in over two years. We also are enjoying a packed social calendar with our annual blow-out, Mouse to the Moon, as the highlight. Our sports teams are performing tremendously and having a great time doing so. The Phoenix is definitely rising at Beta Rho and with a brotherhood as strong as ours, it will continue for a long time to come.

### Alpha Psi Presbyterian College

Our past HSP, Clay Gunter, was recently inducted into Pi Gamma Mu, the international honor society for social sciences. He graduated with honors and was selected as a member of Who's Who Among College Students. He received the Big Brother/Little Brother Award, the Academic Excellence Award for Highest G.P.A. and for the second year in a row, the Phoenix Leadership Award.

Alpha Psi Chapter, with its second place finish in softball won the overall B-league championship at Presbyterian College.

Congratulations to Mike Crawford and Shamba Worlick who were elected HSP and HJP respectively for 1993-94.

Many thanks are given to our young Alumni Advisor, Roger Cobb; Chapter Advisor, William Prickett; and Faculty Advisor, Ray Bell, for their help with Alpha Psi Chapter during the past year.

### Beta Mu Wake Forest University

We here at Beta Mu are about to enter a year of transition. This year we had very little trouble finding new brothers to take the place of our

graduating seniors. However, next year, we need to initiate around 25 new brothers to make up for the deficit. This is something the Fraternity has not done since the mid-80's (due to many internal and external factors). If any other chapters have any ideas or suggestions to help us with next year's rush, please send them to us. Any help will be greatly appreciated. On a much lighter side, Beta Mu had a pretty good year. We took second place in our Greek Week out of 13 fraternities. We initiated nine new brothers into the Mystic Circle. We entertained Brian Regan (world famous comedian, who can be seen regularly on the comedy channel) in our house one evening after he performed on our campus. Seven of our brothers were instrumental in Wake Forest's first bowl victory since World War II. We also got involved in the local Head start program and threw Valentine and Easter parties for under-privileged youth. Next year we would like to host either our district's conclave or a SigBust, hopefully with help from the Fraternity Headquarters and other chapters in our area. We can provide accommodations for most brothers who plan to join us. Everyone is welcome. Have a nice summer.

### Alpha Tau Stevens Institute of Technology

This has been a busy semester for the brothers of Alpha Tau. This year we tried a spring rush for the first time. Although not as successful as we had hoped, it proved an invaluable learning experience for the chapter. Four fine men were initiated into the Mystic Circle on April 18, 1993. They are Jim Celauro, Omar Delgado, Howard Smith and Edward Wrocenski. Included in the festivities was our Black Lantern Processional which was especially memorable with the participation of the brothers of Alpha Rho from N.J.I.T.

Service Chairman James Nichols organized a campus team for the MS Walkathon, an annual event which helps to raise money for multiple sclerosis research. Several brothers participated in the event. We applaud everyone involved, especially James, for his diligence and hard work. On April 2, we held our annual Talisman Ball. As



Brothers across the nation have been busy supporting Alpha Sigma Phi's new National Service Project, Canine Companions for Independence (CCI). At Iowa State University, Phi Chapter members joined with another fraternity and sorority to design this poster for Greek Week.



# Chapter Reports

## Chapter Reports

## Chapter Reports

always, it brought undergrads and alumni together in a social atmosphere. Alumni attendance was down from last year, but their support remains as strong as ever as seen by the house improvement donations. Our thanks to everyone involved who made the event a success.

Last year we revived our Parent's Day barbecue, which had been dormant for some years. Everyone had a great time, and it allowed parents to learn more about the brotherhood and our chapter. The day was so successful, we decided to continue the tradition. On April 25, we held another one which was even abetter received that last year.

We would like to wish our graduating seniors the best of luck in their pursuits as the remaining undergraduates look forward to the fall semester.



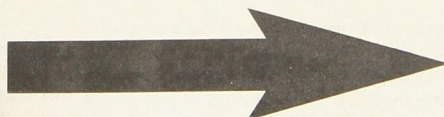
Brothers attending a Province IV activity are having fun while learning. The activity was held at the University of Toledo and focused on brotherhood and leadership development.



Brothers from Iowa State University enjoy a good discussion while standing on their front porch.

**"Recommend a Rushee**

**... or Two ... or Three"**



CHAPTERS NEED YOUR HELP TO LOCATE THE OUTSTANDING SCHOLARS, ATHLETES AND ACTIVITY LEADERS YOU MIGHT KNOW. PLEASE TAKE A FEW MOMENTS NOW TO RECOMMEND SOME GOOD MEN. FILL IN THE DATA AS BEST YOU CAN AND MAKE COPIES OF THIS FORM IF NECESSARY. RETURN THIS FORM TO: Alpha Sigma Phi, P.O. Box 838, Delaware, OH 43015 AND WE WILL FORWARD IT TO THE APPROPRIATE CHAPTER.

Name of Rushee \_\_\_\_\_

Name by which he is usually addressed \_\_\_\_\_

Home Address \_\_\_\_\_

College Address \_\_\_\_\_

High School Attended \_\_\_\_\_

Estimate of High School Scholastic Record \_\_\_\_\_

High School Activities (Honors, Athletics, Offices, etc ) \_\_\_\_\_

Major in College \_\_\_\_\_

Relatives in Alpha Sigma Phi, with chapter and class \_\_\_\_\_

Parents' Names \_\_\_\_\_

Why do you think this man will make a great Alpha Sig: \_\_\_\_\_

Recommended by (please print) \_\_\_\_\_

Home Phone No. ( ) \_\_\_\_\_

Chapter \_\_\_\_\_ Year \_\_\_\_\_

Your help is  
very much appreciated!



# Your Gift Can Be Twice As Valuable!

Listed on this page are companies which have matched gifts to fraternity/sorority foundations.  
Contact your company's personnel office to see if you can make your gift twice as valuable.

Abbott Laboratories Fund  
Aircor, Inc.  
Allendale Insurance Foundation  
Allied Foundation  
Allied-Signal Foundation, Inc.  
Alza Corporation  
Amax Foundation, Inc.  
American Brands, Ltd.  
American Express Foundation  
American President Companies, Ltd.  
The Andersons  
Archer Daniels Foundation  
ARCO Foundation  
ASARCO Foundation  
Ashland Chemicals  
Atlantic Richfield  
Avon Products, Inc.  
Ayres Foundation, Inc.  
Bank of Boston Corporation  
Bankers Trust Company  
BASF Corporation  
Bassett-Walker Inc.  
Batus, Inc.  
Beatrice Foods  
The Beekeeper Foundation  
L.M. Berry and Company  
Best Products Company  
The Black & Decker Corporation  
The Blount Foundation  
The BOC Group, Inc.  
The Boeing Company  
The Boston Edison Foundation  
B.P. America, Inc.  
Bundy Corporation  
Burlington Co. Combined Federal Campaign  
Leo Burnett Company, Inc.  
CPC International, Inc.  
The Calloway Bank  
Carter Wallace, Inc.  
Charles Stewart Mott Foundation  
Chemical Bank  
Chubb & Son Inc.  
Circuit City Foundation  
Citicorp/Citibank  
Cooper Industries Foundation  
Coca-Cola Company  
Computer Associates International, Inc.  
Connecticut National Bank  
Container Corporation of America  
Crestar Financial Corporation  
Frederic W. Cook & Company, Inc.  
Cooper Industries  
CPC North America  
CPC International  
Cray Research Foundation  
CSX Corporation  
Dameron Alloy Foundation  
The Dexter Corporation  
Digital Equipment Corporation  
Dow Corning  
Eaton Corporation  
Emerson Electric Company  
Emhart Corporation  
Enron Foundation  
Ensign-Bickford Foundation  
Equitable Financial Companies  
Equitable Life Assurance Society  
Equitable Insurance Company  
Equitable Real Estate Investment Management, Inc.  
Emsi & Whinnery Foundation  
Exotic Rubber & Plastic  
Farm Credit Services  
First Bank System Foundation  
First Interstate Investment Service  
First National Bank of Minneapolis  
Fluor Corporation  
FMC Foundation  
Ford Matching Gift Program  
Freepoint - McMoran, Inc.  
Fundreburke & Associates, Inc.  
Gary Energy Corporation  
GATX Corporation  
G.D. Searle & Co.  
Gen Corp Foundation, Inc.  
Gen-Flad, Inc.  
General Cinema Corporation  
General Rice Corporation  
Gilman Paper Corporation  
Gulf & Western Industries, Inc.  
John Hancock Mutual Life Insurance Co.  
The Hartline Company  
Hewlett-Packard  
Hormel, Inc.  
Hoechst Celanese Corporation  
Household International  
Illinois Bell  
Illinois Tool Works Foundation  
Index Technology  
Ingersoll-Rand Company  
International Data Group  
International Minerals & Chemical Corporation  
Investors Diversified Services, Inc.  
ITT Corp.  
ITW Foundation  
IU International  
Jeffries & Company  
Jewel Companies, Inc.

John Hancock Mutual Life Insurance  
Johnson Controls  
Johnson & Johnson  
Josten's Inc.  
Kansas City Southern Industries, Inc.  
Keebler Company  
W.K. Kellogg Foundation  
Kemper Group  
Kimberly-Clark Foundation  
Kirk Paper Corporation  
KIRO Inc.  
Kmart Corporation  
Kraft, Inc. Foundation  
Lavi Strauss & Company  
Life of Virginia  
Thomas J. Lipton  
Lyondell Petrochemical Company  
John & Catherine MacArthur Foundation  
Marathon Oil Company  
The McGraw-Hill Foundation, Inc.  
The Mead Corporation  
Merck Company Foundation  
Merit Oil Company  
Microsoft Corporation  
Middle South Services  
Millipore Corporation  
Millipore Foundation  
MMI Companies, Inc.  
Mobil Foundation, Inc.  
Montgomery Ward Foundation  
Morrison-Knudsen Company, Inc.  
The Mutual Life Insurance Co. of New York  
Nabisco Brands, Inc.  
Norman & Company  
National Health & Welfare Mutual Life  
New England Business Service, Inc.  
New Jersey Bell  
Norman & Company  
North Carolina Power Company  
Northern Telecom  
Outboard Marine Corporation  
Pacific Lighting Corporation  
J.C. Penney Company, Inc.  
Penn Central Corporation  
Penn Virginia Corporation  
PepsiCo Foundation  
Petro Lewis Corporation  
Pfizer Corporation  
Philip Morris  
Pitney Bowes/Dictaphone Corporation  
Pitway Corp.  
Pitner, Inc.  
Playboy Enterprises, Inc.  
PQ Corporation  
P. Rowe Price Association Foundation, Inc.  
Procter and Gamble  
Projections Unlimited  
Prospect Hill Foundation  
Quaker Chemical Corporation  
Quaker Oats Foundation  
Quantum  
Rainer National Bank  
Arthur D. Raybin Associates  
Reader's Digest Foundation, Inc.  
Rockefeller Center, Inc.  
Rockwell International Corporation Trust  
Ross, Johnston & Ketersing, Inc.  
SAFECO Insurance Companies  
The Saint Paul Companies, Inc.  
Salcron Brothers, Inc.  
Schering-Plough Foundation  
Scott Paper Company  
Seaboard Surety Company  
Seagram & Sons  
G. D. Searle & Company  
Security Pacific Foundation  
SIFCO Foundation  
Slocum  
The Southland Corporation  
Spiegel, Inc.  
J. M. Smucker Company  
Sprague Tech, Inc.  
Square D Foundation  
Sterling Drug, Inc.  
Stone & Webster, Inc.  
Sun Company  
Sunstrand Corporation Foundation  
Temple-Inland Foundation  
Tesoro Petroleum Corporation  
Thiokol Corporation  
Towers Perrin  
Transamerica Corporation  
Travelers Express Company Inc.  
Twentieth Century Insurance Company  
U.S. West Communications  
Union Pacific Corporation  
United Bank of Colorado, Inc.  
United States Fidelity & Guaranty Company  
United Technologies Corp.  
United Way of Dayton  
Upjohn Company  
The UPS Foundation  
USF&G Insurance Company  
Virginia Power Company  
Warren-King Companies  
The Washington Post Company  
Waste Management, Inc.

Below is a letter from an Alpha Sig who has poignantly recorded his experience with the "Great Flood of 1993." As stated, this story has been repeated all along the Mississippi River and he lists several relief organizations where donations can be sent. The cleanup will take months! If you can help, please do so.

*I'm sure you have heard about the Great Flood of '93 by now. Well, I'm still in little old Carrollton, Illinois where we are high and dry but just eight miles west to Eldred, Illinois, traveling north and south of Eldred are miles of destruction caused by the flood. The many battles of the "war" are all over except for one levee that is holding on by a thread.*

*Only 22 miles from me is Hardin, Illinois in Calhoun County, Illinois. The Illinois River is its east boundary, the Mississippi River is its boundary on the west with the rivers meeting at its southern tip. To get there now is a 100 mile trip around, traveling on dirt country roads part of the way. Mail and UPS are carried over by boat, helicopters bring supplies in daily and gas is rationed.*

*I spent a lot of evenings and days working on various levees. At one they said we had 800 National Guards over in Greene County and over 3,000 meals a day were being made at a small (the only church in Eldred) church's fellowship hall.*

*Every levee had to have sandbags loaded into small boats, taken where they were needed, unloaded and then started on the levee. Every evening we worked until it was too dark to see, at least 10:00 p.m. Once a truck was unloaded another was waiting, giving little time to catch a break. Sandbags are made of burlap or some biodegradable poly something. Neither one is easy to grab and both are hard on your hands. My wife, Sandy, is at the bagging area, either holding or shoveling. I bagged only one day when they would not let civilians at the levee because it was too dangerous. My brother-in-law, two other people and I make quick work of 1 1/2 state trucks full of sand. One Sunday, with temperatures in the high '90's, I was back on the levee. I was luckier than some of the farmers working there that day. The night before we were fighting just two to three inches of water to go. Most thought that levee would go in a day or so, it lasted 12 more days. We were short of people that night so we had to carry the bags where they were needed, too dark for boats and too narrow for four wheelers. When we had finished that small breach at about 11 p.m., I left. Some were still there talking when another breach occurred. These people carried bags in the dark until 6:00 a.m. and were back the next day.*

*The last days were anxious. Finally on a Friday, the call went out for anyone and everyone to help. My brother-in-law and I went to the levee in one place driving by two nice houses and two large machine*

*sheds. We had to drive through about a foot of water to get there. The place was unbelievable, sandbags coming by truck and helicopter. There is not enough boats so we load them to the point of being one or two inches above the water line. A large breach is north of us about 70 yards wide, close enough to see water is leaking all over the place. That breach is closed only to have another one to the south, then a larger one to the north. Guardsmen are chest deep kneeling in the breach to keep the sandbags left in place. We work as hard as we can. I'm waist deep in the water at times. The sun going down, we are running out of time and light and then sandbags. Another breach to the north is reported. Radio reception is bad in that valley. Evacuation orders come in—everyone off the levee. Two boats go to the south, we go north to get people, hoping to return with sandbags. When we get to the loading zone, there are no bags on top and a major breach is reported to the south. Back we go to get the rest but our boat motor quits. After a few minutes and the possibility of a helicopter ride, we finally get it to run, pick up the rest and get out of there. By 6 p.m. on Saturday, one of the houses and one of the machine sheds are gone, the other two have the tops of their roofs sticking out. Most people at the bagging area were just like us, too tired to cry, we'll do that later. Two more levees north of Eldred are lost Sunday bringing 30,000 acres under water.*

*Cleanup will take until, well, months. How much damage is done, no one knows for sure. The help has come from everywhere. If you want to help, donations can be sent to my area to the **Eldred Flood Relief Fund, Eldred, IL 62027; Hillview Flood Relief Fund, Hillview, IL 62050; Calhoun County Flood Relief, Hardin, IL 62047; any chapter of the Red Cross in Greene County (in care of Sandy Gross), Scott County, Calhoun County or Jersey County; or to the American Red Cross.** Any help would be appreciated, the destruction is unbelievable. St. Louis, just 60 miles away, has been hit hard as has many other places. Your thoughts and prayers are also appreciated. It is late and another day awaits.*

YITMC  
David D. Evans, Illinois '82

P.S. I can be reached at 217-942-3636 (business) or 217-942-3993 (home) if you would like more information. □



# ALPHA SIGMA PHI NEWS & NOTES

## American University

**Darrell A. Henry '84**, Culver City, CA, plans to begin a master's degree in public administration and public policy program this fall at the University of Southern California. He and his new wife live in the Los Angeles area.

**Kenneth Markel '80**, N. Potomac, MD, lives at 11218 Welland Street, N. Potomac 20878.

**Gary Risser '88**, Elizabethtown, PA, is a graduate student at Chulalongkorn University in Bangkok, Thailand. He taught English as a second language during 1991-92 as part of Harvard University's World Teach program.

## Baldwin-Wallace College

**Michael Stephens '73**, Pine City, NY, teaches special education at a junior high school in Elmira, NY. He and his wife have two children.

## Bethany College

**Dr. George M. Northrup '42**, Bethany Canyon Lake, CA, is a retired general surgeon. He and his wife have been married 50 years and have six children and 12 grandchildren.

## Bowling Green State University

**Sean Murphy '88**, Tarrytown, NY, is a senior research analyst in corporate human resources at Chemical Bank in New York City.

## University of California at Berkeley

**David V. Bell '42**, Overland Park, KS, retired last year. He now is a part-time ombudsman at the University of Kansas Medical Center.

**Gordon Gill '51**, Nipomo, CA, is president of Gordon Gill Associates, Inc., a consulting and real estate development firm. Last year he was president of the Santa Maria Chamber of Commerce.

**Dr. R. Jerry Naegele '82**, Omaha, NE, has begun residency training in surgery at the Creighton University School of Medicine.

**Steve Rogers '34**, Ann Arbor, MI, retired in 1981 from Ford Motor Co. He now is active in civic affairs and volunteer work.



Sig Salute! Alpha Sigma Phi salutes Brother **David C. Gatzke, UCLA '89**, the National Interfraternity Conference's newest professional staff member. After a year of traveling as Chapter Leadership Consultant for the "Old Gal," Dave moves up in the interfraternal world as the Indianapolis-based NIC's Membership Services Representative.

**Steve Shank '52**, Baja California Sun, Mexico, has spent 25 years in the oil industry.

## University of Chicago

**Felix F. Caruso '22**, Hinsdale, IL, "is healthy and happy and looking forward to a summer of golf with his son and grandsons."

## University of Connecticut

**Walton C. Galinat '43**, Waban, MA, is professor emeritus in the Department of Plant and Soil Science at the University of Massachusetts. He continues to write professional articles for publication and gives lectures.

## Cornell University

**Lester E. Bowers '62**, Warminster, PA, has been elected vice chairman of the Warminster Township Planning Commission. He also was appointed to the Citizen's Advisory Board of the Medical College Hospitals.

## University of Findlay

**Rick Neff '70**, Hudson, OH, is vice president of Midland Title in Akron, OH.

**Mitch Sirota '76**, Winter Springs, FL, has started a wrestling program and implemented new strength-training courses in the Physical Education Department at Valencia Community College. He also is an exercise physiologist for the Civil Air Patrol.

## Hartwick College

**Peter Clark '82**, Marietta, GA, has left banking and begun a four-year program at Life Chiropractic College.

**Frederick G. Covert II '82**, Syracuse, NY, plans to move to Cherry Hill, NJ, in August and look for a teaching job. His wife has taken a new job in Philadelphia.

**Robert P. Mann Jr. '74**, Vero Beach, FL, won a local charity golf tournament and will now compete at the state level. He and his wife enjoy diving, most recently in the Caymen Islands.

## University of Illinois

**Wayne L. Albrecht '56**, Dekalb, IL, is associated with the College of Business of Northern Illinois University.

**John W. Bell '32**, Watseka, IL, writes that he has "a wonderful life" managing his farms and serving on local boards. He and his wife have been married 51 years.

**Dr. Richard Browne '85**, Evanston, IL, has graduated from the University of Illinois College of Medicine and is now taking residency training in surgery at Loyola University Medical Center.

**Royal H. Cloyd '48**, North Berwick, ME, is president emeritus of the Boston Center for the Arts. He lives part of the year in Mexico.

**Brian DeDecker '88**, New Haven, CT, is a student in the biophysics Ph.D. degree program at Yale University.

**John C. Felten '51**, Lake Geneva, WI, reports a new address: W 4135 Jerseyhurst Lane, Rt. 4, Box 911, Lake Geneva 53147.

**Richard Joutras '48**, Northbrook, IL, is retired. He is a trustee for Underwriters Laboratories and the Ringling School of Art and Design.

**Rick Makrickas '70**, Hudson, OH, has been appointed production manager at Goodyear's Stow (OH) mold manufacturing plant.

**Peter J. Marchiando '59**, Niceville, FL, will retire this year from the Air Force. He has been Commander of Phillips Laboratory, one of the Air Force's four super labs.

**Steve Miller '88**, Chicago, IL, lives and works in Chicago.

**Scott Plummer '87**, Naperville, IL, is enrolled in the MBA evening program at Northwestern University's Kellogg Graduate School of Management.

**Harry E. Roethe Jr. '48**, Richmond, VA, retired in 1992 and writes that he is "enjoying it!"

**William A. Skoglund '32**, Batavia, IL, is retired.

**Joe Sorquist '87**, Chicago, IL, is an engineer at LTV Steel.

(Please turn to page 12)

## Former Bulldog All-American named to assistant soccer post

Former Barton College All-American **D. J. Grisewood, Barton '92**, has been named assistant soccer coach for the Bulldogs for the 1993 season, head coach and athletic director Gary Hall announced.

Brother Grisewood, a native of Decatur, Georgia, plans to finish requirements for his degree at Barton in December. He netted 31 goals in his four-year playing career, making him one of the top scorers in the program's history.

In his junior season, he was a first team NAIA All-American as he led the Carolinas Conference in scoring and helped the Bulldogs to a share of the regular season title. Also in 1991, he was chosen to the NAIA All-South and Area VIII first teams.

He was an All-Carolinas Conference and All-District 26 honoree in both his junior and senior seasons and was selected to three post-season all-tournament teams. Last year, his high school,

Shamrock in Decatur, retired his soccer jersey. Grisewood has hopes to play on the professional level after completing his career at Barton. He is currently in the draft pool of players for the new Atlanta franchise on the Continental Indoor Soccer League (CISL). Atlanta will field its first team in the spring of 1994.

"I am very excited about having D.J. work in our program," Hall said. "He will be a tremendous asset to us and we plan for him to be involved in all phases of the program. Since he has been with me as a player for four years, he will be able to step right in and accept a great deal of responsibility immediately."

"He understands the game very well and his experience should be valuable to our younger players. He will be continuing to train as he pursues possibilities as a player on the professional level. He has the ability to be an outstanding coach."





# Alumni News & Notes

(continued from page 11)

**John T. Trutter '39**, Evanston, IL, visited the chapter house this year and left a contribution.

## Illinois Institute of Technology

**Andrew Bielanski '83**, Palm Bay, FL, is a candidate for the Master of Science degree in environmental engineering at the Florida State Institute of Technology. With the help of Brother Steve Zizzo, he has met a group of alumni from Vero Beach.

**Thomas P. Collier**, Pacific Palisades, CA, has an international consulting business. He celebrated his 78th birthday at a party in February.

**Donald A. Ladenberger '64**, Geneva, IL, has left the mechanical engineering field after more than 15 years and is now a product sales manager in charge of outside training.

**Thomas T. Singer '50**, Homewood, IL, retired last December after 40 years in the insurance industry. He writes, "I am proud of the chapter's accomplishments, as reported. Keep up the good work and rushing!"

**Dennis Vail '60**, Beaumont, TX, is an area sales manager for a subsidiary of Betz Laboratories.

**Cliff Westwood '86**, Holyoke, MA, is now a process engineer at Techalloy Co., Inc., a stainless steel and alloy wire manufacturer. He wants to organize a vacation/reunion for all Brothers with whom he attended. Call (413) 534-6216 for details.

## Indiana University

**William Murnahan '78**, Bloomington, IN, has begun a new desktop publishing company, ADvantage Publishing, out of his home.

**Kevin Perlmutter '89**, New York, NY, has been promoted to assistant account executive for the Camel cigarettes account at McCann-Erickson, an ad agency.



Richard R. Sidwell,  
Iowa '32

## University of Iowa

**Richard R. "Dick" Sidwell '32**, Valley Center, CA, is retired from the insurance business. He and Phi Chapter Brother Carl Riepe '35, San Diego, CA, live near each other. He recently visited with Brothers W.H. "Nick" Carter '25, Baton Rouge, LA, and Don Stutsman '35, Philomath, OR.

## Iowa State University of Science and Technology

**Dean Douglas '83**, Algonquin, IL, works in sales at Gemini Moulding Inc. A co-worker is Brother



Five brothers from Alpha Omicron standing in front of their chapter house on the Missouri Valley campus. Pictured with them is "Mom" Morgan (Mrs. Jean Morgan) who was their housemother during their college years. Pictured from left to right are: Dr. Ronald Brown, Wichita, Kansas; Sam Nicholls, Martins Ferry, Ohio; Rick Lee, Ballwin, Missouri; "Mom" Morgan, Lawrence, Kansas; Dr. Paul Thomson, Blue Springs, Mo; and the Rev. Dr. Bill N. Lawrence, Martins Ferry, Ohio. Brothers Nicholls and Lawrence were celebrating their 25th anniversary of graduating from Missouri Valley College and the other brothers, their 24th anniversary.

**Ted D. Jung '80**, Sun Prairie, WI. He has earned a black belt in karate.

**Donald McCarthy '79**, Weymouth, MA, is a sales representative for the Millipore Corp.

**Scott Olson '65**, Cedar Rapids, IA, is associated with Skogman Realty. He reports that Brother Richard F. Ross '54, Ames, IA, has been appointed dean of the Iowa State University College of Veterinary Medicine.

**Jack Wharton '65**, Clive, IA, reports a new business address: 405 6th Avenue, Suite 700, Des Moines 50309.

## Lehigh University

**David Yarmoff '83**, Westport, CT, reports that Brother Joseph Yammarino plans to get married July 18.

## Lock Haven University

**Paul Kabara '89**, Sayreville, NJ, is a physical education teacher for pre-school through third grade in the Pemberton Township.

**Jerry Mullery '89**, Plymouth, PA, is now a security and loss-prevention specialist at Lord and Taylor. He graduated from King's College and is pursuing a master's degree in criminal justice at Marywood College.

**Tim Nester '87**, Indianapolis, IN, is a sales representative for Herff Jones/Nystrom Educational Publishing Co.

**Angelo Petrillo '87**, Plainfield, NJ, is a research chemist for Bristol Myers products.

**Michael Walters '88**, Gettysburg, PA, has a new job as program coordinator for West Shore Recreation.

## Lycoming College

**John E. Sames '88**, Mays Landing, NJ, is the commercial lines manager at his family's insurance company in Pleasantville. He also does computer-system maintenance. He plans to get married Nov. 20.

## University of Massachusetts

**Roger M. Battistella '55**, Ithaca, NY, is professor of health services policy at Cornell University, where he has been since completing doctoral studies at the University of Michigan in the mid '60s. He also is winemaker at Six Mile Creek Vineyard, a family winery. "The welcome mat is always out for Alpha Sigs," he writes.



On April 15, 1993, **Dr. Daniel P. Babb, Marshall '80**, Grand Chapter Advisor of Beta Delta Chapter, a Marshall University Professor, and Chairman of the Chemistry Department, was initiated into the Omega Gamma Chapter of Order of Omega.

Membership is based on high interfraternity involvement, chapter involvement, character, university and community involvement, service and leadership.

In addition to the extraordinary leadership skills Dr. Daniel P. Babb possesses, he was also recognized by the Interfraternity Council as the 1992-1993 Marshall University Greek Support/Advisor of the Year, the highest honor which a volunteer may receive. This award is presented annually to a volunteer which best exemplifies the ideal advisor.

On April 2, 1993, **Kevin G. Grose, Marshall '91**, was presented with the Most Valuable Member of a Student Organization Award (for contributions toward the Interfraternity Council) and the Outstanding Leader of the Year - Junior. These awards, presented by the Office of Student Activities, reflect commitment to several organizations and outstanding leadership abilities.

In addition to the extraordinary leadership skills Kevin G. Grose possesses, he was also recognized by the Interfraternity Council as the 1992-1993 Marshall University Greek Man of the Year, the highest honor which an undergraduate may receive. This award is presented annually to a fraternity man which best exemplifies the ideas and principles of "interfraternity."

## University of Michigan

**Raymond T. Bohn Jr. '43**, Winchester, VA, and his wife recently celebrated their 45th wedding anniversary. His best man at his wedding in Ann Arbor was Brother Bill Waterbury '43, Wrightsville Beach, NC.



# Alumni News & Notes

## Ohio Northern University

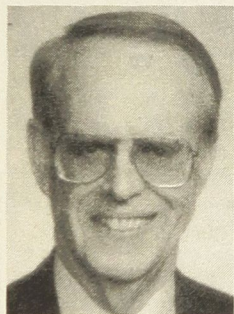
**David Burkholder '80**, Fairborn, OH, and his wife, Lori, are the parents of a new daughter, born last December.



Sig Salute! Grand Secretary **Dr. Larry G. Spees, Ohio Wesleyan '57**, submits this Sig Salute to **G. Scott Grissom, Oklahoma '78**, for directing the initiation of the Epsilon Chapter and for the moral support he gave to the new brothers.

## University of Oklahoma

**Dr. Ronald Graham '74**, Griffin, GA, is an emergency-staff physician at West Georgia Medical Center in LaGrange. He reports that Brother Bill McClure '77, Salinas, CA, is an assistant manager for AFES.



H. M. Moreland  
Oregon State '43

## Oregon State University

**H.M. Moreland '43**, Fair Oaks, CA, has retired from State Farm Insurance Co., where he was manager of the Sacramento area.

## Penn State University

**Herb Hertner '58**, Coconut Grove, FL, writes that he "had a fantastic time helicopter skiing at Bobbie Burns in Western Canada this past February."



Sig Salute! The professional staff salutes Brother **George Banister, Ohio State '50**, of St. Petersburg, FL for sending in the 1949 version of the Pledge Manual and the 1952 issue of the Songs of Alpha Sigma Phi. These mementos are now on display at the Fraternity Headquarters archives. The donation of similar materials about our illustrious 148-year history is always most welcome, Brother Banister!

**Kevin Mszanowski '79**, San Jose, CA, lives at 1516 Camino Cerrado, San Jose 95128.

**Martin S. Walzer '28**, Orlando, FL, entertained Alpha Sigs at his home on the 18th fairway of the Bay Hill Club in March. At the Nestle Golf Tournament, he met Dave Houghton, son of Brother Charles Houghton '30, South Yarmouth, MA.

**Eric Weber '85**, Pittsburgh, PA, reports a new home address: 302 Haugh Drive, Pittsburgh 15237.

## Purdue University

**Ralph Billeter '52**, Rockville, MD, retired in January from the Upjohn Co. after 34 years of service. He now does consulting work in federal medical procurement.

**Craig Borghesani '87**, Bristol, IN, has earned a master's degree in mechanical engineering and is now job hunting.

**Tony Brooks '76**, Livonia, MI, has been promoted to manager of special-studies engineering, vehicle exterior systems, in the Plastic and Trim Products Division at Ford Motor Co. For a cost-saving measure, he has been nominated for the General Manager's Award.

**Bruce Cooper '79**, Lilburn, GA, is a lead engineer in process control at Simons-Eastern Consultants. He and his wife are the parents of their third child, a daughter.

**Alan Cragun '69**, Lebanon, IN, is president of the Lebanon Community School Board.

**Steve Crooks '78**, Warwick, RI, is vice president of Arpin International Group in East Greenwich.

**Trey Etcheson '77**, Greencastle, IN, is president of Farmers State Bank in New Ross.

**Lynn Fisher '69**, Lafayette, IN, reports a new address: 10007 East 500 N., Lafayette 47905.

**Chaz Front '75**, Towson, MD, has started a new material handling company with clients in Maryland, Washington, D.C. and Virginia. He also serves on the board of the Baltimore Museum of Art.

**Richard M. Hansen '75**, Glen Ellyn, IL, is associated with Commonwealth Edison. He recently passed the Board of Certified Safety Professionals exam.

**James D. Hostettler '71**, Lewisburg, PA, picked the wrong time to climb the summit of Mt. McKinley. During the 22-day trip, he said, the group had "the worst weather in a generation," setting a record death toll. He is manager of construction at Bucknell University.

**Eric Lethen '83**, Huntington Beach, CA, operates a commercial sign business. "Fraternity Brothers looking for fun in the sun please don't hesitate to look me up!" he writes.

**Mike McBride '76**, North Judson, IN, is principal of Lacrosse High School and Elementary School. He and his wife are the parents of a second son, born last November.

**Waverly C. McFarland '80**, Collierville, TN, is associated with Buckman Laboratories in Memphis.

**Bob Pearson '67**, Sunnyvale, CA, is director of advanced desktop systems at Sun Microsystems Computer Corp. in Mountain View.

## Do It For You

- ◆ Annual Fee Waiver
- ◆ Low 15.4% Variable Rate

Minimum Monthly Finance Charge \$0.50 (in any month a finance charge is assessed)

## Do It For Your Fraternity

Each time you use the ΑΣΦ Visa Classic, Alpha Sigma Phi receives a portion of the amount you charge.



Order the ΑΣΦ Visa Classic today!  
Call 1-800-669-7474, ext. 007 for an application

\*As of 6/9/93. Rate subject to change.  
This program is currently available only to permanent residents of the United States.

**Bob Rietz '50**, Delaware, OH, is retired. He was plant engineer at the PPG Coatings and Resins Plant. He is active in local civic affairs.

**Capt. Gregory W. Robinette '79**, Waipahu, HI, has been assigned to the Joint Intelligence Center (Pacific) at Pearl Harbor. His wife and daughter joined him there in June.

**Thomas Rorke '55**, Holyoke, MA, lives at 24 Princeton Street, Holyoke 01040.

**Kipp Schulties '90**, Singer Island, FL, is a golf course designer for Gene Bates Golf Design. He also is studying for an MBA degree in finance at the University of Miami.

**William E. Smith '71**, Plano, TX, is executive vice president of operations and support services for Westcott Communications in Carrollton. He had been vice president of the airline services unit at Ryder System Inc.

**Paul M. Stutsman '47**, Miami, FL, is associated with Stutsman Design Group Inc. and is working on a plan for the re-use of Homestead Air Force Base.

**D. Jeff Sullivan '87**, Indianapolis, IN, has been named project coordinator for the Vice President of Tour Operations and Marketing at American Trans Air.

**Kendall Srengalis '66**, Barrington, RI, is in his 11th year as Rhode Island's State Law Librarian. He and his wife have two children.

**Dr. Tom Wozniak '83**, Indianapolis, IN, is chief surgery resident at Methodist Hospital. Next year, he plans to train in cardiothoracic surgery at St. Louis University.

## Radford University

**Tim Aylor '90**, Brightwood, VA, is engaged to be married in May, 1994.

**Gary Booth '89**, Concord, VA, is the safety coordinator for a major pharmaceutical wholesale

(please turn to page 14)



# Alumni News & Notes

(continued from page 13)

company, AlcoHealth Services, in Lynchburg.

**Stephen Downie '82**, Roanoke, VA, is assistant vice president of commercial banking at First Union. He and his wife are the parents of their first child, a daughter, born last September.

**Marty Long '84**, Crewe, VA, is now town manager of Crewe. He and his wife are the parents of a new son, Bret.



Sig Salute! Thirty Brothers from the former SUNY-Binghamton Colony salute Assistant Province Chief **John W. Drummond III**, Illinois State '88, Colony Advisor **David F. Twomey**, Cornell '57, former Undergraduate Representative to the Grand Council Finance Committee **Kevin T. Gates**, NJIT '87, and the RPI's Beta Psi Chapter undergraduates for organizing and implementing a smooth initiation ceremony on very short notice. The salute specifically states, "Your assistance is greatly appreciated."

**John Williams '89**, Annandale, VA, and Brother Richard J. Maxwell '88, Orlando, FL, both work for Armstrong Data Services.

## Rensselaer Polytechnic Institute

**Nicholas L. Leone '54**, Huntsville, AL, has a new job at MEVATEC Corp. in Huntsville.

## University of Rio Grande

**Ricardo L. Alonso '91**, Westerville, OH, is retiring after 20 years of military service. He has been associated with the military-science department at the University of Rio Grande.

**James Barksdale '72**, Columbus, OH, has been an SLD teacher for 17 years in the Columbus Public Schools. He is serving on a local committee that is studying the teacher evaluation process.

**Jeffrey C. Lawler '85**, Columbus, OH, has been promoted to senior account executive at Ameritech Publishing Inc. in Columbus.

**David M. Moore '84**, Powell, OH, has been promoted to corporate pricing coordinator in the corporate office of Emros in Enon. He plans to relocate soon to West Jefferson.

**Terry L. Palmer '72**, Chillicothe, OH, owns Fawcett, Oliver, Glass & Palmer Funeral Home. He is active in local civic groups.

**Lawrence F. Pernestti '89**, Lawton, OK, is a fire direction officer and platoon leader at Fort Sill, where he will be stationed until June, 1994. He was married April 2.

**Robert Rountree**, Bowling Green, KY, is vice president of the Fellowship of Christian Athletes and a Young Life leader.

**Wayne Widener '81**, Houston, TX, is now a computer systems administrator for a small anesthesia billing company.

## Rutgers University

**Calvin Chance '74**, Franklinville, NJ, has been promoted to director of materials management at Wheaton Plastic Products.

**Arthur Knox '82**, Fountain Valley, CA, is a western regional sales manager for a chemical manufacturer. He graduated in May from California State University with an MBA in international business.

**Frederick C. Seponara '64**, Blue Bell, PA, met Brother Art Generas '66 while riding in a New York City cab last January.

## Stanford University

**Jerrold C. Schaefer '60**, San Francisco, CA, is associated with Hanson, Bridgett, Marcus in San Francisco.

## Stevens Institute of Technology

**Earle Cummings '63**, Elk Grove, CA, runs the Urban Streams Restoration Program for the California Department of Water Resources. His department is funding a grant project at Albany Village.

**Leonard Skoblar '66**, Middletown, NJ, has been elected president of Purifien Industries Inc., an activated carbon business.

## University of Toledo

**Dr. R. Daniel Braun '58**, Odessa, TX, has a high-risk obstetrics practice and serves as a lay

## Special Volunteer Needs

The following chapters and alumni are in need of a Grand Chapter Advisor or could use additional advisory assistance:

Cornell University, Ithaca, NY  
Lock Haven University, Lock Haven, PA  
Longwood College, Farmville, VA  
University of Missouri, Columbia, MO  
Missouri Valley College, Marshall, MO  
N.J.I.T., Newark, NJ  
Purdue University, West Lafayette, IN  
Rutgers University, New Brunswick, NJ  
Tri-State University, Angola, IN  
Virginia Technological Institute, Blacksburg, VA  
Wake Forest University, Winston-Salem, NC  
Widener University, Chester, PA

If you are near one of these campuses, and wish to volunteer your time and talents to advising one of these chapters, please call Director of Chapter Services Jeffery S. Owens at the Fraternity Headquarters!

## I Volunteer!

I am interested in learning more about volunteering my time in service to the "Old Gal" in the following capacities:

☐ The Grand Council  
☐ Grand Province Chief  
☐ Grand Chapter Advisor  
☐ Additional local advisor

☐ Province volunteer or Assistant  
☐ Alumni Corporation/Association volunteer  
☐ Reporter for *The Tomahawk*  
☐ Faculty Advisor

I have special talents/training in the following areas which I offer in any special way the "Old Gal" needs me:

Name \_\_\_\_\_ Chapter & Year \_\_\_\_\_  
Home Address \_\_\_\_\_ Home Phone \_\_\_\_\_  
Business Address \_\_\_\_\_ Business Phone \_\_\_\_\_

Here is the name of a brother who I recommend as a prospective volunteer in the following capacities:

☐ The Grand Council  
☐ Grand Province Chief  
☐ Grand Chapter Advisor  
☐ Additional local advisor

☐ Province volunteer or Assistant  
☐ Alumni Corporation/Association volunteer  
☐ Reporter for *The Tomahawk*  
☐ Faculty Advisor

Name of brother \_\_\_\_\_ Chapter & Year \_\_\_\_\_  
Address \_\_\_\_\_ Phone \_\_\_\_\_

Send to : Alpha Sigma Phi Fraternity, P.O. Box 838, Delaware, OH 43015. Tel: 614/363-1911. Fax: 614/369-1845



# Alumni News & Notes

eucharistic minister at St. John's Episcopal Church. He and his wife have identical twins granddaughters.

## Wake Forest University

**Brad Whitehead '88**, Atlanta, GA, is studying for a master's of science degree in management at Georgia Tech. He is employed by the Georgia Department of Industry and Trade.

## University of Washington

**T.A. Rose '43**, Medina, WA, retired in 1976. He has been married 49 years and has two grandchildren.

## Westminster College

**James Coughenour '43**, Edgewater, MD, reports a new address: 330 Riverside Road, Edgewater 21037.

**Roy Fuller '90**, Alexandria, VA, is the Service Master manger of the housekeeping department at George Washington University. He reports that Brother Tony Ferrari '89 also works for Service Master.

**George Gardner '42**, Naples, FL, plans to spend July through October in Washington, D.C. "I note that there are a number of Alpha Sigs in Naples," he writes. "I hope to meet some of them."

**Thomas E. Gorley Jr. '64**, Herndon, VA, has been appointed president of Bell Atlantic Utilities Systems Inc. in Reston.

**The Rev. Joseph M. Hopkins**, New Wilmington, PA, is interim supply pastor at Bethel Presbyterian Church. He served 40 years on the faculty of Westminster College and more than four years as a missionary in southeast Africa.

**Henry S. "Hank" Lish '84**, Pittsburgh, PA, is in the electronic banking department at PNC Bank.

**The Rev. Lyman Taylor '43**, Shelton, CT, retired in 1990. He is a part-time minister of visitation at First United Methodist Church. His jazz-style autoharp, which plays 31 chords on a 21-bar autoharp, was featured in *Autoharp Quarterly* last year.

**Arthur Volmrich '47**, Lake Placid, NY, has been in theatre for 19 years and in more than 50 productions, including the musical, "Scrooge," last December.

**Keith Wilson '78**, Discovery Bay, Hong Kong, has been transferred from Bangkok to Hong Kong, where he is now head of the regional currency derivative trading for the Asian region of Bank of America.

## Widener University

**Todd W. Terhune '86**, Tampa, FL, is now a project engineer at HSA Environmental Inc., a company that provides environmental and engineering services. He got married in May, 1992.



Sig Salute! Brother **John L. Shearburn, Widener '68**, receives a hearty salute from Executive Vice President **John R. Chaney, Indiana '67**. Through the process of negotiating the sale of out-of-state property and subsequently assisting with the closing of the A-S-P Corporation, Brother Shearburn went well beyond the realm of attorney and counselor for our general Fraternity. "I heartily recommend him to Alpha Sigs everywhere," says our Executive Vice President!

*The Tomahawk* welcomes the submission of alumni news and notes. Photographs are also most welcome and will be returned, if requested. Material is subject to editing and will be used in *The Tomahawk* as space permits. Your Fraternity is pleased to offer this space to get in touch with area alumni members wishing to stay in touch with those brothers from long ago. □



**George Armbruster, Rio Grande '72**, is shown here at a luncheon held April 2, at Stouffers Inn in Dayton, Ohio. He was named Teacher of the Year for the Ohio Department of Rehabilitation and Correction. Brother Armbruster teaches Adult Basic Education and GED classes at Ross Correctional Institute, Chillicothe, Ohio. Photo courtesy of Warren Northrop, Orient, Ohio.

## Alpha Sigma Phi announces new cutting-edge program for undergraduate presidents

Alpha Sigma Phi is proud to announce the inaugural Presidents' Academy of Leadership (PAL) for undergraduate chapter and colony presidents. PAL will be held January 21-23, 1994, in Pittsburgh, PA.

The academy is designed for chapter and colony leaders who desire to seek a deeper awareness of understanding of themselves and their actions in order to achieve extraordinary results within their brotherhood.

The program is NOT a "how-to" workshop which covers chapter functions like rush, new member education, and scholarship. Instead, the Presidents' Academy of Leadership promises to give participants the critical thinking and leadership skills they need to produce effective results in all chapter and personal situations.

Participants in PAL will gain skills which will not only help them as chapter leaders now, but will also give them invaluable skills in other future endeavors. The PAL curriculum is designed to focus on leadership skills development.

Participation in PAL will have extraordinary results for the individual participants, for their chapters, and for Alpha Sigma Phi.

## Send us your stuff . . .

You're going through your attic and you find a program from your chapter's 50 year anniversary in 1958, but you're not sure what to do with it. The Alpha Sigma Phi Fraternity Headquarters has an offer—we'll take it.

Paraphernalia, pictures, plaques, programs, pennants. If you aren't able to store it anywhere, let us put it in the Fraternity archives.

If you'd like to contribute a piece of fraternity history, no matter how large or small, please send it to Alpha Sigma Phi Fraternity, 12 Lexington Boulevard, P. O. Box 838, Delaware, OH 43015-0838.



# From *The Tommy Archives*

## 75 years ago

May 1918

Past Grand Senior President Colonel Homer Baxter Sprague's passing to Omega Chapter was the feature story. Though decimated by war, all chapters Alpha through Upsilon submitted comprehensive reports of activity to the editor. Official Alpha Sigma Phi hat bands were being offered at 75 cents and ties at \$1.50.

## 50 years ago

June 1943

An air cadet on the cover represented more than 815 known Alpha Sigs engaged in the war effort. Among the many members featured was Brother **Carroll E. Dilley, Ohio Wesleyan '42**, a future editor of *The Tomahawk*. A feature article written by Brother **John T. Trutter, Illinois '39**, was a tribute to Mrs. C.F. Propst, the official grandmother of all Eta men. Regulation style hat bands were being offered for \$1.00.

The Alpha of Alpha Kappa Pi. No corresponding issue was published.

## 25 years ago

Summer 1968

Brother **Donald J. Gonzales, Nebraska '36**, Williamsburg home was said to be the "house full of history" in the feature article. Among the alumni receiving the Delta Beta Xi award was Brother **Otto Sonder, American '47**. Other prominent alumni mentioned included future Grand Senior President **George B. Trubow, Michigan '53**, and his recent appointment to the Governor's Commission on Law Enforcement and the Administration of Justice for Maryland. Among those undergraduates submitting chapter round-ups included Brothers **Vince Garland, Alabama '66**, **Brian Judge, Lawrence Tech '67**, **James R. Hammond, Washington '66** and current *Tomahawk* editor **John R. Chaney, Indiana '67**. The 1968 National Convention Speaker was announced as Brother **Vincent Price, Yale '30**.

## 10 years ago

Summer 1983

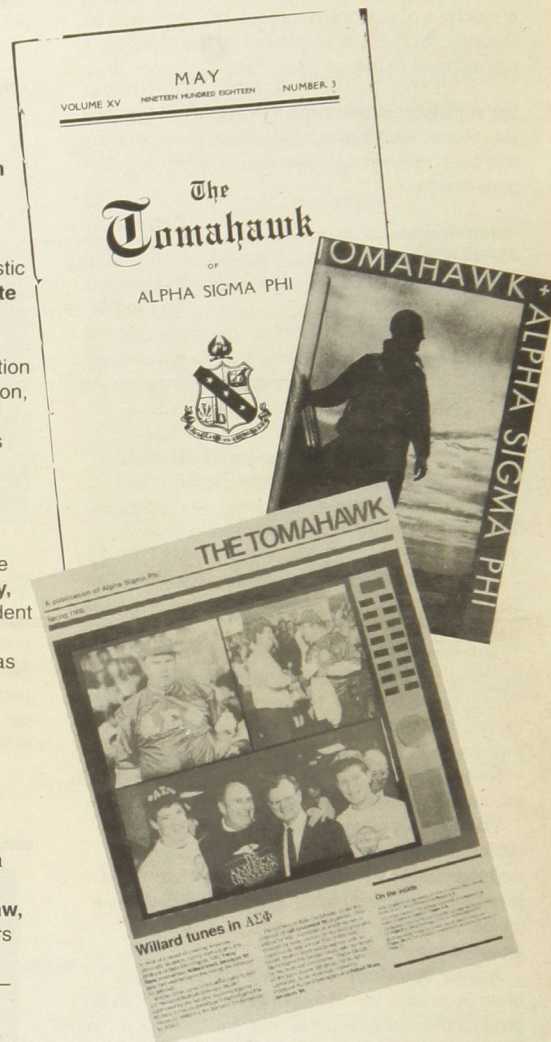
The Black Lantern: March of History was the featured article. An article on the 75th anniversary celebration of the Zeta Chapter was included. *The Tomahawk* was reported as having captured three top national awards for

excellence in an article by Brother **Jeffrey R. Hoffman, NC State '76**. Brother **Robert Gill, Radford '83**, article entitled "In search of community: An advisor looks at Fraternity" shared his personal view. A letter to the editor from Brother **John E. Mellen, Ohio Wesleyan '36**, gave an overview of a long standing business relationship with Brother **Walter Leckuhl, Nebraska '28**, though neither was aware of the other's connection within the Mystic Circle. Congressman **John Kasich, Ohio State '73**, was reported as looking into the rise of military spare part costs which were noted as being "a bit more than the modest rate of inflation during the year." Among the Alpha Sigs in action, current Grand Senior President **Dr. Dennis R. Parks, Baldwin-Wallace '72**, was reported as the new coordinator of Capital University's Cleveland Center and Brother **Lt. Daniel E. Peake, Cincinnati '68**, had recently returned from assignment in Lebanon, **Chuck Rikli, Oklahoma '67**, had returned from an Air Force assignment in Okinawa, Brother **R. T. Beeghly, Ohio Wesleyan '31**, was chairman and president of Standard Slag Co. and Brother **William B. Hutchinson, Washington '29**, was reported as having been honored by his alma mater as Alumnus Summa Laude Dignatus for 1983.

## 5 years ago

Spring 1988

Brother **Willard Scott, American '53**, and a photo collage of him with various American University brothers including Brother **Bob Shaw, American '84**, was on the cover. New chapters at SUNY-Plattsburgh and Illinois State were highlighted. The "heroes" of Alpha Sigma Phi—our volunteers—were featured in depth. Members of the Wake Forest Chapter were pictured in Charleston, SC at the Manigault House.



## Director of Fraternity Operations sought

The Fraternity is seeking a Director of Fraternity Operations for an opening beginning June 1, 1994. This person will require management and interpersonal skills; an ability to recruit, train, motivate and supervise traveling staff, and to plan national level programs and services. The position will require flexibility and a willingness to travel and a strong desire to work with college-aged men.

This is a full-time position, baccalaureate degree required. Salary will be commensurate with capabilities. Ability to work with budgets, operating statements, spread sheets, accounts receivable and audit reports is a plus.

Please submit letter of application listing three references along with a current resume and salary history plus requirements to: John R. Chaney, Executive Vice President, Alpha Sigma Phi Fraternity, P. O. Box 838, Delaware, OH 43015. Or fax information to: 614/369-1845. All inquiries will be handled in a confidential manner.



# Alpha Sig Connections Provides Brothers Assistance

**ALPHA SIG  
CONNECTIONS**  
614-363-1911



Alpha Sigma Phi Fraternity assists brothers whenever possible. Through the Alpha Sig Connections program, the Fraternity acts as a clearinghouse of information for those seeking employment opportunities and those seeking to fill vacant positions in their companies.

Brothers currently looking for positions are listed according to position desired.

Please review categories that may be similar to positions you are wishing to fill. If you find a potential candidate, contact the candidate directly.

Any brothers with position openings are asked to forward the information to the Headquarters so that it may be passed along to potential Alpha Sig candidates.

Brothers wishing to participate in the

listings should contact the Fraternity headquarters for the proper forms to be filed. Alpha Sigma Phi does not charge any fees for the program. The Fraternity provides this program as a service to members and makes no recommendations, guarantees, or promises. ☐

Name	School	Major	Career Desired	Graduation Date
<b>Accounting</b>				
Christopher Egan	Indiana	Accounting	Entry level position	5/93
Stephen C. Gehr	Bowling Green	Accounting	Accounting position	5/93
<b>Aerotechnology</b>				
Jon Oliver	Bowling Green	Aerotechnology	Pilot/Airport Management	5/93
<b>Architecture</b>				
Jason Kaye	I.I.T.	Architecture	Entry Level Architect	5/93
Robb S. Pfeffer	Westminster	Architecture	Architecture/Related field	6/92
<b>Education</b>				
G. Eric Hamm	Rio Grande	B.S. Elementary Ed.	Teaching/Grades 1-8	92
<b>Engineering</b>				
Elias Fernandez	Illinois Tech	Applied Physics	Summer Intern-Physics/Mech. Engineer	12/93
Erik W. Fredeen	Purdue	Mechanical Engineering	Mechanical Engineering	12/93
Bronson J. Funke	Tri-State	B.S. Civil Engineering	Design/Construction-Structural Systems	11/92
Barry Herman	Lehigh	Chemical Engineering	Process Engineer/Tech Sales	6/92
Timothy S. Horan	SUNY, Binghamton	Electrical Engineering	Entry level Electrical Engineering	5/93
Michael S. Kocourek	Iowa State	Mechanical Engineering	Mechanical Engineer	9/92
Michael E. Landt	Illinois	Mechanical Engineering	Summer Internship/Mechanical Engineering	2/93
Alfredo Nevarez	Iowa State	Mechanical Engineering	Mechanical Engineering	2/92
Michael D. Rowles	Widener	Engineering	Production Management	1973
Constantine Sideridis	Rutgers	Ceramic	Engineering/Econ.	
Gregory H. Taylor	Illinois	Electrical Engineering	Technical Sales/Marketing	2/93
<b>Environmental Science</b>				
Neal T. Colwell	Cal. Berkeley	Civil Eng./Env. Studies	Environmental Analyst/Engineer	5/93
Tim Forlow	Findlay	Hazardous Materials Mgt.	Health & Safety Compliance/Permitting	5/93
Evan Weiss	Slippery Rock	B.S. Environmental Plan.	Environmental Consulting/Planning	5/93
<b>Finance</b>				
Jeffrey C. Grau	Lehigh	Finance	Finance w/Foreign Language Skills	6/92
Robert Funk	Lehigh	Economics	Economic/Financial Analyst	6/93
Brian D. Leonard	Illinois	Economics and Finance	Bank Investments	6/93
Joseph V. Marcelli	Lehigh	Economics/Russian Studies	Economic Research w/International Co.	6/93
Daniel A. Wachinski	Lehigh	Finance/Computer Science	Finance with major corporation	6/92
Timothy H. Wate	Lehigh	Mathematics	Actuary	6/93
<b>Health Services</b>				
Derek Collins	Slippery Rock	Occu. Health/Safety Mgt.	Safety Management/Loss Control Rep.	5/93
<b>Management</b>				
Richard Breese	Missouri Valley	Bachelor Science/Finance	Business Administration	5/93
Berry C. Jennings	Missouri Valley	Business Administration	Management field	5/93
Corey J. Kusher	Lock Haven	B.S. Management Science	Management/Entry Level	12/92
David E. Lane	Penn State	B.A. Speech Commun./Mgmt.	Management/Upper Level	5/93
Irwin M. Lazar	Radford	BBA Information Systems	Management/Information Systems	8/92
<b>Public Administration</b>				
Randall Koch	William Paterson	Political Science	Public Administration	5/93
<b>Public Relations</b>				
Patrick J. Hill	Lock Haven	Public Relations	Public Relations/Broadcasting/Journalism	5/94
<b>Safety</b>				
Robert Cote, Jr.	Illinois State	B.S. Occupational Safety	Safety Eng./Loss Control/Prevention	5/93



# ALPHA SIGMA PHI FRATERNITY DIRECTORY



SUMMER 1993

Founded at Yale College, December 6, 1845, by Louis Manigault, Stephen Ormsby Rhea, and Horace Spangler Weiser. National Headquarters for the Fraternity "To Better The Man" is located at 12 Lexington Boulevard, Delaware, Ohio 43015. (614) 363-1911.

## GRAND COUNCIL

Dr. Dennis R. Parks (Penn State '75), Grand Senior President, Director, Lynchburg Center, Div. of Continuing Education, University of Virginia, 1 Quinlan Street, P.O. Box 3199, Lynchburg, VA 24503. (804) 947-6699.  
Stan G. Thurston (Iowa State '66), Grand Junior President, 665 Harwood Drive, Des Moines, IA 50312. (515) 245-7850.  
Dr. Larry O. Speas (Ohio Wesleyan '57), Grand Secretary, 1040 First Avenue, Gallipolis, OH 45631. (614) 245-5353.  
Kevin J. Garvey (Westminster '75), Grand Treasurer, 828 Derby Drive, West Chester, PA 19380.  
Mark D. Still (Washington '75), Grand Marshal, 212 Sparrow Street, Vacaville, CA 95587-7225. (707) 449-0746.  
Larry D. Philippi (Bowling Green '76), Grand Councilor, 4325 Tenth Avenue, San Diego, CA 92103-2306. (619) 456-3880.  
Stuart A. Splask (Westminster '78), Grand Councilor, 1225 Mayberry Lane, State College, PA 16801. (814) 238-3025.

## LIVING PAST GRAND SENIOR PRESIDENTS

Emmet B. Hayes, Stanford '31	1954-56
Charles T. Akre, Iowa '28	1956-60
Dr. John Blackburn, Missouri Valley '49	1968-70
Dr. Robert E. Miller, Connecticut '49	1970-74
George B. Trubow, Michigan '53	1974-76
George E. Lord, Ohio Wesleyan '61	1976-78
Richard A. Dexter, Oregon State '60	1978-80
Richard R. Gibbs, Oklahoma '51	1980-82
Stan N. Miller, Purdue '64	1982-84
Donald R. Morgan, Purdue '57	1985-86
Robert A. Sandercox, Bethany '51	1986-88
Edmund A. Hamburger, Polytechnic '45	1988-90
Charles J. Vohs, Penn State '75	1990-92

## EXECUTIVE STAFF

John R. Chaney (Indiana '67), Executive Vice President  
Jeffery S. Owens (Illinois '87), Director of Chapter Services  
Beverly J. Moody, Vice President for Administration  
D. Todd Harris (UCLA '92), Assistant Director of Chapter Services-Expansion  
Edward W. Lenane (Plattsburgh '88), Sr. Chapter Leadership Consultant  
Michael E. Macfarlane (Longwood '90), Chapter Leadership Consultant  
J. Warren Smith III (Barton '90), Chapter Leadership Consultant

## ADMINISTRATIVE STAFF

Hazel M. Dargatz, Educational Foundation Secretary  
Sandra J. Jagusch, Administrative Secretary  
Christy Gray, Coordinator of Computer Services  
Ruth M. Reed, Chapter Services Secretary  
Merilyn J. Sipes, Comptroller

## GRAND HISTORIAN

Robert W. Kutz (California '67), 495 Forest Avenue, Arcata, CA 95521. (707) 441-5725.

## NATIONAL SCHOLARSHIP DIRECTOR

Mark A. Williams (Rio Grande '79), 4329 Dorothy Drive, Grove City, OH 43123. (614) 875-1512.

## NATIONAL SERVICE DIRECTOR

Alan M. Breedlove (Penn State '77), 89 Altadena Drive, Pittsburgh, PA 15228. (412) 392-5038.

## SESSQUICENTENNIAL TASK FORCE

George B. Trubow (Theta '53), Honorary Chairman, 5555 North Sheridan Road; #1606, Chicago, IL 60640. (312) 387-1445.  
Robert J. Shaw (American '88), Chairman, 1744 Corcoran Street, N.W.; #100, Washington, DC 20009-2472. (202) 659-9510.  
Robert W. Kutz (California '67), Editor, 495 Forest Avenue, Arcata, CA 95521. (707) 441-5725.

## EDUCATIONAL FOUNDATION TRUSTEES

Dr. Robert E. Miller, Chairman of the Educational Foundation: (Connecticut '49), 202 Searies Road, Pomfret Center, CT 06259. (203) 928-2888.  
Stan G. Thurston (Iowa State '66), 665 Harwood Drive, Des Moines, IA 50312. (515) 245-7865.  
Richard R. Gibbs (Oklahoma '51), 1501 East Sixth Street, Tulsa, OK 74120. (918) 585-5703.  
Robert A. Sandercox (Bethany '51), Box 142, Bethany College, Bethany, WV 26032. (304) 829-7723.  
Alfred B. Wise (Baldwin-Wallace '43), Colony Club, 2216 Carriage Lane; #2, Port Clinton, OH 43452. (419) 797-6789.  
Milton Cerny (American '54), Caplin & Drysdale, One Thomas Circle, NW; Suite 1100, Washington, DC 20005. (202) 862-5075.  
Charles J. Vohs (Penn State '75), #4 Ridge Court, Harwich, MA 02645. (508) 394-1300.  
Thomas C. Wajner (Illinois Tech '61), Young Road, Bernardville, NJ 07924. (201) 397-3010.  
John R. Chaney (Indiana '67), President to the Educational Foundation: 12 Lexington Boulevard, Delaware, OH 43015.  
Ralph F. Burns (Ohio Wesleyan '32), Secretary to the Educational Foundation: 12 Lexington Boulevard, Delaware, OH 43015.  
Steven V. Zizzo (Illinois '84), Vice President for Development: 12 Lexington Boulevard, Delaware, OH 43015.  
Theodore R. Kocher (Findlay '92), Director of Alumni Services: 12 Lexington Boulevard, Delaware, OH 43015.

## ALUMNI COUNCILS

Bay Area Alumni Council, Milton W. Morrison (California '37), 5892 Ascot Drive, Oakland, CA 94611.  
Beta Delta Alumni Council, William F. (Biff) Matthews (Marshall '65), 444 Hudson Avenue, Columbus, OH 43055-5813.  
WNV Alumni Council, Kieran Kreiss (Buffalo '65), 763 Tacoma Avenue, Buffalo, NY 14216.

## THE PROVINCES

Province I: Oregon State, Washington.  
Grand Province Chief: Owen G. McCulloch (Oregon State '86), 1344 S.W. 57th, Portland, OR 97221. (503) 226-3423.  
Province II: California-Berkeley, UCLA  
Grand Province Chief: (VACANT)

Province III: Indiana, Illinois, Illinois State, Iowa State, Lindenwood Interest Group, Missouri, Missouri Valley, Purdue.  
Grand Province Chief: Charles A. McCaffrey (Illinois '82), 602 South Johnson, Urbana, IL 61801. (217) 356-2288.  
Assistant Chief: Thomas R. Hinkley (Indiana '84), 30 East Georgia Street; #701, Indianapolis, IN 46204-3620. (317) 321-7969.  
Province IV: Bowling Green, Central Michigan, Illinois Tech, Loyola, Toledo, Tri-State.  
Grand Province Chief: Edward G. Leedom (Bowling Green '86), 7435 Lunitas Lane; #33, Perrysburg, OH 43551. (419) 247-2477.  
Assistant Chief: John V. Kim (Illinois '86), 2661 North Stuart Drive, Arlington Heights, IL 60004. (708) 392-8769.  
Province V: Miami.  
Grand Province Chief: Armando J. Rodriguez, Jr. (Miami '82), 10231 S.W. 33rd Street, Miami, FL 33165. (305) 594-4363.  
Province VI: Bethany, Davis & Elkins, Findlay, Marshall, Ohio State, Ohio Wesleyan, Rio Grande.  
Grand Province Chief: Mark A. Williams (Rio Grande '79), 4329 Dorothy Lane, Grove City, OH 43123. (614) 875-1512.  
Assistant Chief: Jeffrey L. Lewis (Rio Grande '77), 916 East Main Street, Oak Hill, OH 45656. (614) 882-6296.  
Province VII: Barton, Coastal Carolina, East Carolina, Longwood, U.N.C.C., Presbyterian, Radford, Virginia Tech Colony, Wake Forest.  
Grand Province Chief: Richard G. Kahler (Radford '82), 713 Westover Avenue, Norfolk, VA 23507-1622. (804) 533-9464. Assistant Chiefs: Bernice F. Bullard III (Barton '84), 5035 Park Road; #H, Charlotte, NC 28209-5501. (919) 851-1729.  
Jim J. Brown (U.N.C.C. '86), 1310 Corton Drive; #C, Charlotte, NC 28203. (704) 358-3765.  
Bernard Schulz (Radford '89), 715 Harness Creek View Drive, Annapolis, MD 21403. (202) 737-6738.  
Province VIII: American, Lehigh, Lock Haven, Lycoming, Penn State, Slippery Rock, Westminster, Widener.  
Grand Province Chief: (VACANT)  
Assistant Chief: Michael W. Moyer (Lock Haven '87), 1526 North Forest Park Avenue, Baltimore, MD 21207-4924. (301) 582-3222.  
Province IX: Delaware, N.J.I.T., Rutgers, Stevens Tech, Stockton State, William Paterson.  
Grand Province Chief: Craig Snyder (Penn State '85), P. O. Box 133, Wagontown, PA 19376. (215) 975-6100.  
Assistant Chief: James Comerford (N.J.I.T. '84), 70 Keats Road, Basking Ridge, NJ 07920. (201) 817-1944.  
Province X: Cornell, Hartwick, SUNY-Plattsburgh, R.P.I.  
Grand Province Chief: Eric J. Kiriels (Plattsburgh '88), 11A Pinkham Road, Medford, MA 02155. (617) 272-5212.  
Assistant Chiefs: John Drummond III (Illinois State '88), 1823 Dover Court, Schaumburg, IL 60193. (708) 529-4981.  
Michael J. Van Valkenburgh (Plattsburgh '88), 64 Knollbrook Road; #25, Rochester, NY 14610-2165. (914) 338-3624.  
Grand Province Chief Emeritus: Dr. Otto Sonder (American '47), 52 West Street, Oneonta, NY 13820. (607) 432-4719.

## CHAPTER LIST

American University (Beta Chi 1940), Box 77, Eagle Station, Washington, DC 20015. (202) 686-1300. Alexander Wychoff, HSP, Robert J. Shaw (American '84), 1744 Corcoran Street, N.W.; #100, Washington, DC 20009-2472. (202) 659-9510.  
Barton College (Gamma Lambda 1958), 902 West Gold Street, Wilson, NC 27893. (919) 243-7792. Eddie D. Whitley, HSP, Grand Chapter Advisor: Allen R. Stallings (Barton '73), 1301 Lakeside Drive, Wilson, NC 27893. (919) 291-3309. Grand Chapter Advisor Emeritus: Dr. E. A. Rasberry, Jr. (Barton '58), 111 Salem Street, Wilson, NC 27893. (919) 243-5902.  
Bethany College (Beta Gamma 1929), P. O. Box 398, Bethany, WV 26032. (304) 829-7000. Chris Knudson, HSP, (304) 829-4463. Grand Chapter Advisor: Dr. Larry Grimes (Bethany '61), P.O. Box C, Bethany, WV 26032. (304) 829-7921.  
Bowling Green State University (Gamma Zeta 1950), #1 Old Fraternity Row, Bowling Green State University, Bowling Green, OH 43201. (419) 372-2959.  
Gene Olson, HSP, (419) 372-1453. Co-Grand Chapter Advisors: William Cameron (Bowling Green '50), 1205 Birch Avenue, Maumee, OH 43537. (419) 893-3267. Edward G. Leedom (Bowling Green '86), 7435 Lunitas Lane; #33, Perrysburg, OH 43551. (419) 247-2477.  
University of California, Berkeley (Nu 1913), 2498 Piedmont Avenue, Berkeley, CA 94704. (415) 540-9511. Arvin B. Asuncion, HSP, Grand Chapter Advisor: Kevin E. Mozanowski (Penn State '79), 1516 Camino Cerrado, San Jose, CA 95128. (408) 371-5863.  
University of California at Los Angeles (Alpha Zeta 1926), 525 Landfair, Los Angeles, CA 90024. (213) 824-2145. G. Lewis Gildred, Jr., HSP, Co-Grand Chapter Advisors: James Cordi (UCLA '64), 11035 Amigo Avenue, Northridge, CA 91326. (818) 360-1695. Donald Durward (UCLA '62), 27939 Pontevadera, Rancho Palos Verdes, CA 90732. (213) 831-2857.  
Central Michigan University (Delta Rho 1993), 510 South Main, Mt. Pleasant, MI 48858. (517) 772-4051. Martin G. Barker, HSP, Grand Chapter Advisor: Robert G. Cabello (Eastern Michigan '70), 1538 Ottawa Boulevard, Saginaw, MI 48602. (517) 686-9339.  
University of Coastal Carolina (Delta Sigma 1993) P. O. Box 1954, Conway, SC 29526. (803) 236-0251. Edward T. Danis, HSP, Grand Chapter Advisor: Ronnie F. McBryde (Francis Marion '82), 831 Smith Drive, Florence, SC 29501. (803) 665-2946.  
Cornell University (Iota 1909), 804 Stewart Avenue, Ithaca, NY 14850. (607) 272-4755/(607) 272-3993. Steven J. Hewitson, HSP.  
Davis & Elkins College (Gamma Delta 1994), Box O, Davis & Elkins College, Elkins, WV 26241. (304) 636-9772, ext. 317. Garrett Yutzy, HSP, Grand Chapter Advisor: H. Maxwell Morgan (Davis & Elkins '52), 36 East Ridge Drive, Elkins, WV 26241. (304) 636-6643.  
University of Delaware (Delta Pi 1991), 162 Elkon Road, Newark, DE 19711. (302) 366-0995. Robert Moore, HSP, Co-Grand Chapter Advisors: Ralph Spagnolo (Stockton State '85), 333 Mountain View Terrace, Dunellen, NJ 08812. (302) 451-8754. James K. Hashimoto (Lock Haven '87), 100 West Shetland Court, Newark, DE 19711-1502. (302) 453-8982.  
East Carolina University (Delta Eta 1979), 422 West Fifth Street, Greenville, NC 27834. (919) 757-3516. Andrew W. Simpson, HSP, (919) 758-3936. Co-Grand Chapter Advisors: Craig T. Stanley (East Carolina '85), 103 Pinewood Road, Greenville, NC 27858-6402. (919) 757-7233. Robert E. Beckwith, Jr. (East Carolina '81), 413 East Fourth Street, Greenville, NC 27834. (919) 758-1032.  
University of Findlay (Gamma Pi 1964, 1992), 309 College Street, Findlay, OH 45840. (419) 424-2951. Rick A. Reynolds, HSP, Grand Chapter Advisor: Robert J. Thoma (Findlay '66), 1217 Hurd Avenue, Findlay, OH 45840. (419) 424-0602.  
Hartwick College (Beta Xi 1935), 71 Spruce Street, Oneonta, NY 13820. (607) 432-9732. J. David Steeves, HSP, Grand Chapter Advisor: Dr. Otto Sonder (American '47), 52 West Street, Oneonta, NY 13820. (607) 431-4891.  
University of Illinois (Eta 1908), 211 East Armory, Champaign, IL 61820. (217) 367-1788. Todd E. Druley, HSP, Grand Chapter Advisor: Charles A.

McCaffrey (Illinois '82), 602 South Johnson, Urbana, IL 61801. (217) 344-0452.  
Illinois Institute of Technology (Alpha Xi 1939), 3361 South Wabash Avenue, Chicago, IL 60616. (312) 842-8999. Judson Althoff, HSP.  
Illinois State University (Delta Omicron 1988), 9 Delaine, Normal, IL 61761. (309) 454-9236. John A. Langas, HSP, (309) 862-3909. Grand Chapter Advisor: Robert L. Denny (American '49), 205 Parkview Drive, Bloomington, IL 61701. (309) 766-2942.  
Indiana University (Gamma Chi 1968), 1968 North Jordan Avenue, Bloomington, IN 47407. (812) 330-7959. William J. Hollingsworth, HSP. (812) 330-7924. Grand Chapter Advisor: Eric C. Bratton (Indiana '89), 11535 Ralston Avenue, Carmel, IN 46032. (317) 846-1844.  
Iowa State University (Phi 1920), 2717 West Street, Ames, IA 50010. (515) 292-1902. Michael B. Elliott, HSP, Co-Grand Chapter Advisors: Thomas J. Beebe (Iowa State '86), 1717 Marella Trail, Des Moines, IA 50310-3823. (515) 270-0176. Mark J. King (Iowa State '85), 4205 43rd Street, Des Moines, IA 50310.  
Lehigh University (Beta Epsilon 1929), U.C. Box F2, Lehigh University, Bethlehem, PA 18015. (215) 758-2431. John J. Qualis, HSP, (215) 758-0950. Donald S. Jefferis, Jr. (Lehigh '84), 94 Bayberry Court, Glen Mills, PA 19342. (215) 444-4130.  
Lock Haven University (Delta Nu 1987), 29 North Fairview Street, Lock Haven, PA 17445. (717) 748-4304. Donald E. Cole, Jr., HSP, Faculty Advisor: Dan Gales, Lock Haven University, Lock Haven, PA 17445.  
Longwood College (Delta Iota 1980), c/o David Hong, Box 1125, Longwood College, Farmville, VA 23901. (804) 392-7743. Derek A. Dabbs, HSP, Faculty Advisor: Dr. Richard Couture (Longwood '88), 1143 Stokes Station road, Goochland, VA 23063. (804) 395-2216.  
Loyola University of Chicago (Delta Alpha 1968), 1062 West Columbia, Chicago, IL 60626. (312) 764-0049. Antonio W. Allen, HSP, (312) 274-9680. Grand Chapter Advisor: Mike Heneghan (Loyola '68), 2748 Asbury, Evanston, IL 60201. (312) 275-6700.  
Lycoming College (Gamma Rho 1951), Box 971, Lycoming College, Williamsport, PA 17701. (717) 321-4488. George W. Leonhardt III, HSP. (717) 321-4491. Grand Chapter Advisor: James F. Finkler (Lycoming '83), RR 2, Box 105, Hughesville, PA 17737. (717) 322-4676.  
Marshall University (Beta Delta 1929), 201 Fifth Avenue, Huntington, WV 25701. (304) 523-5939. Danell Lewis, HSP, Grand Chapter Advisor: Dr. Daniel P. Babb (Marshall '80), 5137 Newcomb Creek Road, Huntington, WV 25704. (304) 696-2307.  
University of Miami (Gamma Delta 1952), 225 S.W. 65th Avenue, Miami, FL 33144. (305) 284-4663. Aldo Alvarez, HSP, (305) 266-9512. Grand Chapter Advisor: Shahin Heikmat (Miami '83), 10237 S.W. 24th Street, #C341, Miami, FL 33165. (305) 921-7781.  
University of Missouri (Alpha Theta 1929), 1121 Ashland Gravel Road, Columbia, MO 65201. (314) 874-9042. Jeffrey T. Strimman, HSP, Grand Chapter Advisor: Christopher J. Rausch (Missouri '80), 1068 Dawn Valley Drive, Maryland Heights, MO 63043. (314) 947-4969.  
Missouri Valley College (Alpha Omicron 1945), 509 East College Street, Marshall, MO 65340. (816) 886-8745/(816) 886-8741. Sebastian G. Elizondo, HSP, Grand Chapter Advisor: Larry Stockman, Missouri Valley College, Marshall, MO 65346. (816) 886-6924.  
New Jersey Institute of Technology (Alpha Rho 1921), 184 Warren Street, Newark, NJ 07102. (201) 622-8815. Omar Khatib, HSP, Faculty Advisor: Dean Ray Boxer, Associate Dean of Students, N.J.I.T., 323 Martin Luther King Drive, Newark, DE 07102. (201) 645-5134.  
University of North Carolina, Charlotte (Delta Zeta 1979), 7099 Untz Road, Concord, NC 28027. (704) 549-0284. Donald K. Green, HSP, Grand Chapter Advisor: Steve Wangerin (U.N.C.C. '84), 10627 Jardin Way, Charlotte, NC 28215-8044. (704) 335-4370.  
Ohio State University (Delta 1908), 81 East 15th Avenue, Columbus, OH 43201. (614) 294-3359/(614) 294-3350. Joseph G. Strines, HSP, Grand Chapter Advisor: Shaun Sizemore (Marshall '87), 6801 Sharon Court, Columbus, OH 43229. (614) 895-5328.  
Ohio Wesleyan University (Epsilon 1863, 1993), Ohio Wesleyan University, H-W Campus Center, MUB Box 1868, Delaware, OH 43015. Richard T. Ritter, HSP. (614) 368-2559. Grand Chapter Advisor: Richard Jackson (Epsilon '50), 948 Pollock Road, Delaware, OH 43015. (614) 365-0941.  
Oregon State University (Psi 1920), 410 N.W. 25th, Corvallis, OR 97330. (503) 758-3324.  
Pennsylvania State University (Upsilon 1918), 328 East Fairmount Avenue, State College, PA 16801. (814) 238-9720. Robert E. Baisch, HSP, Grand Chapter Advisor: Lawrence P. Walker (Penn State '85), 657 Berkshire Drive, State College, PA 16803. (814) 865-1874.  
Presbyterian College (Alpha Psi 1928), Presbyterian College, Box 1063, Clinton, SC 29325. (803) 883-8528. Michael Crawford, HSP, Grand Chapter Advisor: William H. Price (Presbyterian '62), 500 Calvert Avenue, Clinton, SC 29325. (803) 833-0681.  
Purdue University (Alpha Pi 1939), 951 David Ross Road, West Lafayette, IN 47906. (317) 463-2591. Daniel G. Mullen, HSP.  
Radford University (Delta Theta 1980), 1011-K Fairfax Street, Radford, VA 24141. (703) 639-1070. Matthew G. Duval, HSP, Co-Faculty Advisors: Dr. William R. Kennan (Radford '90), 410 Miller Street, Christiansburg, VA 24073. (703) 381-9920. Dr. Stephen W. Lenhart (Radford '90), Department of Geology, Radford, VA 24142.  
Rensselaer Polytechnic Institute (Beta Psi 1940), 31 Belle Avenue, Troy, NY 12180. (518) 274-4744/(518) 272-7065. Karl F. Slippery, HSP, Co-Grand Chapter Advisors: David J. Garber (R.P.I. '83), 202 Borge Drive, Clifton Park, NY 12065. (518) 276-6736. Paul A. Stockert (R.P.I. '80), (518) 465-2306.  
University of Rio Grande (Delta Epsilon 1972), Box 10, University of Rio Grande, Rio Grande, OH 45674. (614) 245-9356. Michael V. Fisher, HSP.  
Rutgers University (Beta Theta 1931), 106 College Avenue, New Brunswick, NJ 08903. (201) 246-9307. Kevin McFeeley, HSP, Grand Chapter Advisor: Stevan Zullo (Rutgers '79), 955 King George Post Road, Edison, NJ 08837. (908) 686-0933.  
Slippery Rock University (Delta Delta 1970), c/o Slippery Rock University, Student Life Office, B-105 University Union, Slippery Rock, PA 16057.  
William P. Brasko, HSP, Grand Chapter Advisor: Patrick M. Cahalan, (Slippery Rock '90), 257 Merion Drive, Pittsburgh, PA 15228. (412) 288-6495.  
State University of New York at Plattsburgh (Delta Xi 1988), Alpha Sigma Phi Fraternity, S.U.N.Y. - Plattsburgh, Plattsburgh, NY 12901. Grand Chapter Advisor: Bob C. Silverman (R.P.I. '76), P.O. Box 36, 10 Pleasant Street, Peru, NY 12972. (518) 643-2703. Roy P. Kretzer, HSP, (518) 566-8432.  
Stevens Institute of Technology (Alpha Tau 1926), 903 Castle Point Terrace, Hoboken, NJ 07030. (201) 659-9763. Robert F. Weiss, HSP, (201) 653-6683.  
Grand Chapter Advisor: John Janiszewski (Stevens Tech '69), 315 48th Street, Union City, NJ 07087. (201) 348-9247.  
Stockton State College (Delta Lambda 1984), G-Wing College Center, Stockton State College, Pomona, NJ 08240. (609) 965-5736. Andrew J. Delaney, HSP, Grand Chapter Advisor: Michael J. Ferrante (Stockton State '85), 47 Holly Park Drive, Tabernacle, NJ 08088. (609) 265-5516.  
University of Toledo (Beta Rho 1937), 2999 West Bancroft, Unit #A-1, Toledo, OH 43606. (419) 537-3211. Dustin O'Neill, HSP, Co-Grand Chapter Advisors: Greg Fretti (Toledo '81), 4737 West Central Avenue, Toledo, OH 43615. (419)



University of Toledo (Beta Rho 1937), 2999 West Bancroft, Unit #A-1, Toledo, OH 43606. (419) 537-3211. Dustin O'Neill, HSP, Co-Grand Chapter Advisors: Greg Fretti (Toledo '81), 4737 West Central Avenue, Toledo, OH 43615. (419) 473-3276. Ed Nagle (Toledo '81), 3753 Grantley Road, Toledo, OH 43613. (419) 837-6666.

Tri-State University (Beta Omicron 1935), 709 West Maumee, Angola, IN 46703. (219) 665-9215. Thomas F. Billerman, HSP, Grand Chapter Advisor: Mike Pedue (Tri-State '82), 51262 Crooked Oak Drive, Grnager, IN 46530. (219) 357-3610.

Wake Forest University (Beta Mu 1932), Box 7291, Reynolda Station, Winston-Salem, NC 27109. Stephen A. McKnight, Jr., HSP, Faculty Advisor: Brian Crisp, Reynolda Station, P. O. Box 7505, Winston-Salem, NC 27109. (919) 761-5528.

University of Washington (Mu 1912), 4554 19th Avenue, N.E., Seattle, WA

98105. (206) 527-3131. Jeffrey T. Schulte, HSP, Grand Chapter Advisor: Robert Strecker (Washington '78), P. O. Box 15387, Seattle, WA 98115. (206) 527-4141.

Westminster College (Alpha Nu 1939), 129 Waugh Avenue, New Wilmington, PA 16142. (412) 946-9975. Joseph T. Hirz, HSP, Grand Chapter Advisor: Todd S. Cole (Westminster '82), 235 Maple Street, New Wilmington, PA 16142.

Widener University (Gamma Xi 1962), Box 1200, Widener University, Chester, PA 19013. (215) 872-9110/(215) 447-0367. Clayton E. Miller, HSP, Faculty Advisor: David Womack (Widener '92), S.A.C. Office, Widener University, Chester, PA 19013. (215) 499-4412.

William Paterson College (Delta Mu 1986), c/o Student Center, Room 312, William Paterson College, 300 Pompton Road, Wayne, NJ 07470. Richard J. Searis, HSP. (201) 942-8668. Richard McGuire (William Paterson '88),

William Paterson College Bookstore, Student Center, 300 Pompton Road, Wayne, NJ 07470. (201) 595-3232.

COLONIES  
Virginia Technological Institute (Virginia Tech Colony 1993), c/o Chris Vogelsang, President, 4040 Pritchard Hall, Virginia Tech, Blacksburg,

INTEREST GROUPS  
Lindenwood College (Lindenwood Interest Group), c/o Shawn Worman, President, Lindenwood College, P.O. Box 835, 209 South Kings Highway, 949-4133. Advisor: James S. Reid (Tulane '68), 1508 Watson, St. Charles, MO 63301. (314) 272-6190.

## THE TOMAHAWK SIG-POSIUM

Dear  
Alpha  
Sigma  
Phi . . .

June 15, 1993

Dear  $\Lambda\Sigma\Phi$ ,

Enclosed please find a Cashier's Check in the amount of \$1,090.67 payable to the Alpha Sigma Phi Educational Foundation Delta Rho Endowment. As discussed, these were remaining funds from the Gamma Sigma Chapter at Detroit Tech.

It would be appreciated if you would see to it that the funds are used appropriately by the Delta Rho Chapter at Central Michigan University.

Faternally,

Joseph C. Coccia

Detroit Tech '68

Dear Mr. Chaney,

College is a very exciting and challenging period in my life. As a double major in physics and astrophysics at U.C. Berkeley, I am constantly being challenged by new problems and concepts. Yet, I find the art of dealing with people as hard to master as any conceptual idea in physics. In addition, the financial struggle of paying for college has always been dark clouds in the horizon. Alpha Sigma Phi has give me the opportunity to succeed in both the areas of interpersonal skills, personal growth and the financial part of the college life.

As a recipient of the 1992-93 Grant-In-Aid Award for the Alpha Sigma Phi Educational Foundation, I have been able to better afford college. I am fortunate to receive the \$1,000. While \$1,000 is 1/12 of my yearly college expenses, its effect on my financial situation has been immeasurable. The scholarship money has enabled me to pay the house my rent ahead of time. I can hardly describe the relief one feel when one's rent is paid off for the next two months. This would never have been possible without the generous support of the Alpha Sigma Phi Educational Foundation. As a future alumnus, I plan to support the Alpha Sigma Phi Educational Foundation. I hope that there will be

large sums of scholarship money available for those brothers who show the merit and the need for it.

The scholarship which I received not only helped my financial situation, but it also enabled me to be a better brother. For being a financial responsible brother is a very important quality in a brother. By having the financial backing of the scholarship I am able to be a more responsible and accountable brother. I can truly say that the past two years, as a brother in the Mystic Circle of Alpha Sigma Phi, has effected my personality and outlook on life in a way that no other period has. By being a brother in Nu Chapter of Alpha Sigma Phi I have learned more about life than from what I have actually studied at Berkeley. In addition, I have just been elected HSP for the fall semester of 1993. I am truly honored and grateful for the opportunity to excel at life as a brother and as a recipient of the Alpha Sigma Phi Educational Foundation scholarship.

Sincerely yours,

Oren Levy

California '91

## Annual Loyalty Fund

I am proud to donate to the 1993-94 Annual Loyalty Fund.

☐ Check is enclosed

☐ Bill to VISA #: \_\_\_\_\_ MasterCard #: \_\_\_\_\_

SIGN YOUR NAME HERE

DATE

Charge \_\_\_\_\_ payment(s) of \$ \_\_\_\_\_ in:

Oct. Nov. Dec. Jan. Feb. Mar. Apr. May June

☐ \$25 Honor Roll

☐ \$50 Phoenix Club

☐ \$150 Anniversary Club

☐ \$250 Pinnacle Club

☐ \$500 Charter Member/  
Pinnacle Club

☐ \$1,000 Grand Senior

☐ \$2500 Founder's Club

Presidents Club

☐ Other

Name \_\_\_\_\_ Chapter \_\_\_\_\_

Address \_\_\_\_\_

Phone \_\_\_\_\_

Send your tax-deductible gift to: The Alpha Sigma Phi Educational Foundation, 12 Lexington Blvd., P.O. Box 838, Delaware, OH 43015-0838.



# IN MEMORIAM RALPH FRANK BURNS

## May 12, 1912—September 25, 1993



Brother Ralph F. Burns, initiated February 21, 1932, by Epsilon Chapter, Ohio Wesleyan University, joined Omega Chapter Saturday evening, September 25, 1993, while attending a joint meeting of the Fraternity Grand Council and the Educational Foundation Trustees in Pittsburgh, PA.

From his initiation, "Mr. Alpha Sigma Phi" exemplified the finest in the Fraternity. He served Epsilon Chapter as an undergraduate holding many offices and in 1936 was appointed Executive Secretary of Alpha Sigma Phi. During his forty years in this position, he always focused on the undergraduate, never losing sight of the all important Brotherhood.

During Ralph's tenure as Executive Secretary he coordinated the Fraternity's three mergers and saw over 29,000 brothers initiated into the Fraternity. Upon his retirement in 1976, Ralph remained active within the Fraternity serving as Secretary of the Alpha Sigma Phi Educational Foundation. He also maintained many volunteer commitments in his Fraternity, community, and at his alma mater.

In 1938, he was a founding recipient of the Delta Beta Xi Award for service to his Fraternity. He received the Distinguished Merit Award in 1976; and in 1980, the Evin C. Varner, Jr. Distinguished Service Award. In 1984, the Grand Council named him an honorary "Third Founder" during the kickoff of the Educational Foundation's Third Founding Endowment Campaign.

He had served as President of the Fraternity Executives Association, as President of the College Fraternity Editors Association; and as chairman of various committees in the interfraternity world. He was a recipient of the NIC Gold Medal Award and received the Fraternity Executives Association's Distinguished Service Award in 1985.

Brother Burns is survived by his wife Joanna and his two Alpha Sig sons Bruce and Jonathan. Memorial Contributions may be made to the Alpha Sigma Phi Educational Foundation for the Ralph F. Burns Fund. "The Cause is Hidden, the Results Well Known." The Winter issue of *The Tomahawk* will carry a special memorial piece celebrating Brother Burns' life.

## CALENDAR OF EVENTS

1993	CHAPTER	ANNIVERSARY	CHAPTER	ANNIVERSARY
	Ohio State (1908)	85	Indiana (1968)	25
	Illinois (1908)	85	Loyola (1968)	25
	California-Berkeley (1913)	80	SUNY-Plattsburgh (1988)	5
	Penn State (1918)	75	Illinois State (1988)	5
	Presbyterian (1928)	65	Lock Haven (1987)	5
	Barton (1958)	35		
1994	CHAPTER	ANNIVERSARY	CHAPTER	ANNIVERSARY
	Cornell	85	Purdue	55
	Missouri	65	Illinois Tech	55
	Bethany	65	Davis & Elkins	45
	Marshall	65	UNCC	15
	Lehigh	65	East Carolina	15
	Westminster	55	Stockton State	10

## NATIONAL ACTIVITIES

Atlanta	November 4	Regional Alumni Event
San Diego	December 1	Regional Alumni Event and Founders' Day Celebration
Dallas	December 2	Regional Alumni Event and Founders' Day Celebration
Detroit	December 6	Regional Alumni Event and Founders' Day Celebration
Dayton/Cincinnati	December 7	Regional Alumni Event and Founders' Day Celebration
Columbus, OH	December 8	Regional Alumni Event and Founders' Day Celebration
Pittsburgh	January 21-23	Presidents Academy of Leadership
Pittsburgh	January 21-23	Grand Council Winter Meeting
Pittsburgh	January 21-23	Educational Foundation Trustees Meeting
National Leadership Conference & Convention/Volunteer Alumni Conference,		
Chicago O'Hare Marriott Hotel,	August 18-21	

## ALUMNI COUNCIL MEETINGS

Bay Area Alumni	Third Thursday of each month (Except December)
-----------------	---

## CHAPTER AND CAMPUS ACTIVITIES

Barton College Homecoming	October 22-23	RPI Homecoming and Alumni Weekend	October 29-30
Marshall Homecoming	October 22-23	Coastal Carolina Chartering	October 30
Wake Forest Homecoming	October 23	Virginia Tech Colonization	October 31
Illinois Homecoming	October 29-30	Penn State Homecoming and Alumni Weekend	November 5-6
Ohio Wesleyan Fall Fest	October 29-30		

If you have an event or activity that you wish announced in the Calendar of Events, please send information to Editor, *The Tomahawk*, P.O. Box 838, Delaware, OH 43015. If you are interested in assisting with any of the alumni events or would like additional information, please contact Fraternity Headquarters at (614) 363-1911.

## THE TOMAHAWK

A publication of Alpha Sigma Phi Summer 1993

*The Tomahawk* is published four times per year by Alpha Sigma Phi. Second class postage rates are paid at Delaware, OH 43015 and additional post offices. USPS: 007-964; ISBN: 0741-5435.

**Postmaster:** Change of address form No. 3579 should be sent to Alpha Sigma Phi, P.O. Box 838, Delaware, Ohio 43015.

**Address corrections:** Please help us keep our addresses up to date. If the man named on label is no longer in college and not at this address, please advise. Please tell us about any spelling errors or other mistakes. When moving, notify headquarters as far in advance as possible.