



Along the Drive

## HISTORY OF THE UNIVERSITY

The University of Alabama was established in 1831 by the Congress of the United States, and fostered by the founders of the State. The University is the capstone of the public school system of Alabama. It is a part of the public school system and is maintained by the State. Located at Tuscaloosa on the Warrior River, its campus is one of the most beautiful in the South.

The University showed remarkable progress until 1864 when a body of federal cavalry completely destroyed it. The erection of new buildings began, however, in 1867.

The Medical College of Alabama was moved in 1907 from Mobile to the campus and became an organic department of the University.

The University has an endowment fund which is being gradually increased out of royalties arising from leases of coal lands. The income from the endowment is available for maintenance.

Since 1910 the University has quadrupled in size, both in buildings and students. In 1910 there were six hundred and fifty students, at the present time there are twenty-five hundred.

In 1922 a popular subscription for buildings and equipment enabled the University to erect and equip four new buildings. At the present time there are eighteen buildings on the campus not including the Presidents Mansion and the new law building which is now being constructed.

The University is administrated under the following organizations: College of Arts and Sciences; School of Commerce and Business Administration; School of Education; College of Engineering; School of Law; School of Medicine; School of Mines; The Graduate School, and the School of Extension.

The School of Law is the strongest in the South and is a member of the American Association of Law Schools.

The School of Commerce and Business was established in 1909 and has experienced a most phenomenal growth; being second, only, to the College of Arts and Sciences.

Through the College of Engineering the University furnishes the best facilities, in many respects, of any school in the South for the preparation for engineering fields. The Southern Experiment Station of the United States is located here.

The University is a member of the American Association of Universities and Colleges, which places the University on par with the largest Universities of the nation.

There are twenty-one National Fraternities on the campus, constituting one of the most beautiful Fraternity Rows in the South. The number of Fraternities have doubled since 1916, but the increase has not been in proportion to the increase of students.

The University was one of the first colleges in the South to receive a charter of Phi Beta Kappa which dates from 1851.

## DISTRIBUTION OF STUDENTS

Alabama . . . . .	1873	Nebraska . . . . .	1
Arkansas . . . . .	22	New Jersey . . . . .	20
California . . . . .	4	New Mexico . . . . .	1
Connecticut . . . . .	2	New York . . . . .	87
Florida . . . . .	43	North Carolina . . . . .	2
Georgia . . . . .	34	Ohio . . . . .	2
Illinois . . . . .	11	Oklahoma . . . . .	4
Indiana . . . . .	14	Panama . . . . .	1
Japan . . . . .	1	Pennsylvania . . . . .	10
Kansas . . . . .	1	Porto Rico . . . . .	3
Kentucky . . . . .	7	South Carolina . . . . .	5
Louisiana . . . . .	20	Tennessee . . . . .	34
Michigan . . . . .	3	Texas . . . . .	12
Mississippi . . . . .	112	Virginia . . . . .	7
Missouri . . . . .	5	West Virginia . . . . .	1
Montana . . . . .	1	Wisconsin . . . . .	1





*Gorgas Memorial Library*



Morgan Hall



*Tutwiler Hall*



JULIA S. TUTWILER  
? — 1916



The Gymnasium





*Clark Hall*



WILLIS GAYLORD CLARK  
1827 — 1898

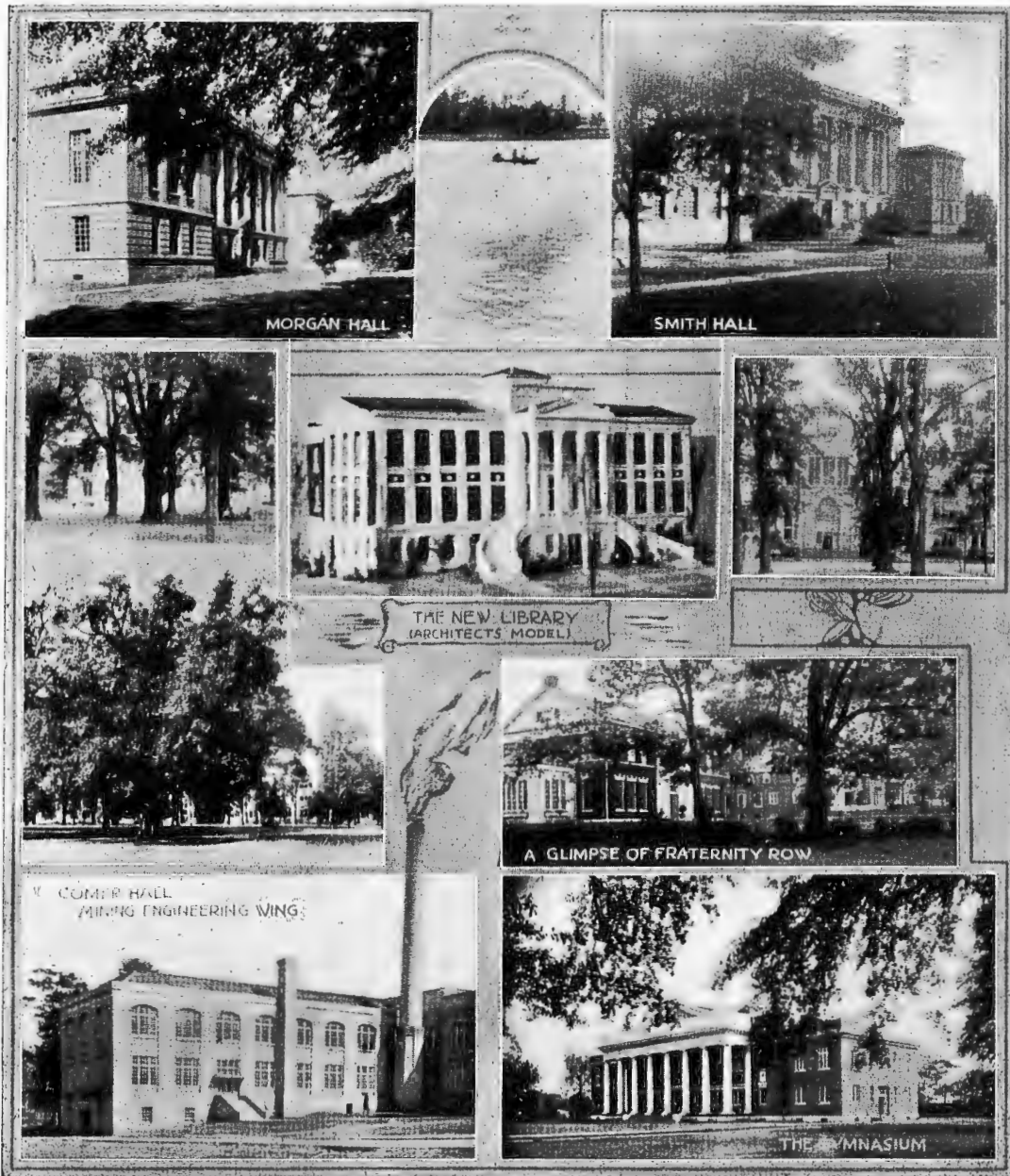




Knott Hall



On the Warrior



IMPORTANT COLLEGE SCENES

## FRATERNITIES AT THE UNIVERSITY OF ALABAMA

SOCIAL			HONORARY		
Delta Kappa Epsilon	. . . . .	1847	Phi Beta Kappa	. . . . .	1851
Phi Gamma Delta	. . . . .	1855	Omicron Delta Kappa	. . . . .	1922
Sigma Alpha Epsilon	. . . . .	1856	Kappa Delta Pi	. . . . .	1922
Kappa Sigma	. . . . .	1869	Chi Delta Phi	. . . . .	1921
Sigma Nu	. . . . .	1874	Tau Pi Epsilon	. . . . .	1922
Sigma Chi	. . . . .	1876	Pi Delta Sigma	. . . . .	1924
Phi Delta Theta	. . . . .	1877	Gamma Sigma Epsilon	. . . . .	1923
Alpha Tau Omega	. . . . .	1885	Chi Beta Phi	. . . . .	1923
Kappa Alpha	. . . . .	1885	Pi Mu Epsilon	. . . . .	1922
Phi Kappa Sigma	. . . . .	1903	Sigma Eta	. . . . .	1922
Zeta Beta Tau	. . . . .	1916	Alpha Phi Epsilon	. . . . .	1918
Pi Kappa Phi	. . . . .	1917			
Lambda Chi Alpha	. . . . .	1917			
Sigma Alpha Mu	. . . . .	1919			
Chi Phi	. . . . .	1919			
Kappa Nu	. . . . .	1921			
Pi Kappa Alpha	. . . . .	1922			
Phi Sigma Kappa	. . . . .	1924			
Delta Tau Delta	. . . . .	1925			
Theta Chi	. . . . .	1926			
Delta Chi	. . . . .	1927			
Delta Sigma Epsilon (Local)	. . . . .	1923			
Chi Delta Sigma	. . . . .	1925			
			PROFESSIONAL		
			Phi Beta Pi	. . . . .	1906
			Theta Kappa Psi	. . . . .	1921
			Phi Chi	. . . . .	1903
			Phi Alpha Delta	. . . . .	1922
			Phi Delta Phi	. . . . .	1922
			Alpha Kappa Psi	. . . . .	1924
			Delta Sigma Pi	. . . . .	1926
			Theta Tau	. . . . .	1922
			Tau Kappa Alpha	. . . . .	1915
			Sigma Delta Kappa	. . . . .	1926





OUR PRESENT HOME

## HISTORY OF CHI DELTA SIGMA

Chi Delta Sigma was founded at the University of Alabama April 7, 1925; by a group of twelve men. The intention of petition Alpha Sigma Phi was written in the original constitution.

We at present, do not own a home, but at the earliest opportunity hope to take advantage of a building plan offered by the University, whereby we could obtain a favorable location on Fraternity Row. Our present home, which is in a highly desirable location adjacent to the Row, will accommodate 24 men. We own all the house furnishings and fixtures.

Chi Delta Sigma has twenty-one active members and twenty-one alumni. Our group represents various parts of Alabama, Mississippi, Arkansas and Florida, however, a majority are Alabamians.

Our group is represented in most of the honorary and professional organizations of the respective schools and colleges of the University. In the school of Commerce and Business Administration we are represented in, The Commerce Club, Sigma Eta, Delta Sigma Pi, Junior Faculty and have an assistant in accounting. The Law Forum, Phi Alpha Delta and Sigma Delta Kappa are organizations of the School of Law in which Chi Delta Sigma is represented. In the College of Arts and Science we have one or more representatives in the Education Club, Pre-med Club and Pi Mu Epsilon. Of the list of honors that may be acquired by students regardless of school or college they represent, Chi Delta Sigma is represented in the following: Euphian Literary Society, Philomatic Literary Society, Excelsior Literary Society, Somerville Literary Society, Baton Club, R. O. T. C. Officers Club, R. O. T. C. Regimental Adjutant, University Band, Forensic Council, Baseball, Track, Basketball, Corolla Staff, Crimson-White Staff, Masonic Club, Alpha Phi Epsilon, Tau Kappa Alpha, and the University Debating Team.

We have been very successful in securing campus honors. There are eight officers to be elected by the entire student body annually. We were successful in electing one of our men for Business Manager of the 1925-1926 Corolla and another for Business Manager of the 1926-1927 Crimson-White. Members of our group have represented their respective classes as Orator, member of Executive Committee for the student body and Forensic Council.

Our social status on the campus has ranked with the best National Fraternities from the beginning and has been well maintained. We have entertained the Sororities as individual groups and representative groups on several occasions.

We have our constitution, by-laws, ritual and records. Our accounting records are complete and very effective in presenting our financial history and status.

---

## SCHOLASTIC STANDING

The scholastic standing at the University is computed on the following basis: A: :4, B: :3, C: :2, D: :1. The number of hours represented by a grade is given weight. A student's average would be computed as follows: Multiply each grade weight, as A: :4, by the number of hours which the grade represents, total results, divide by the total number of hours represented by the students' grades.

The average of the entire student body is 2.15. The average of all fraternity men is 2.23. The average of non-fraternity men is 2.07. Chi Delta Sigma's average is 2.31. Our scholastic record is above the average for fraternities but below the winner of the scholastic loving cup for last year. It is quite interesting to note that the lowest scholastic average of the National Fraternities was 1.70, the highest 2.69, with the others well distributed between the two points. Thus our grades rank among the better half.



Clark Hall

## ACTIVE MEMBERS OF CHI DELTA SIGMA



*First Row*—WILLIAM J. TINDLE, RALPH DODSON, EARL E. BRADLEY

*Second Row*—MURREY SCREVEN, PAUL HODGES, J. D. MORGAN

*Third Row*—WILLIAM STEELE, G. D. HALSTEAD, JOSEPH PHILLIPS, LESLIE KEY

*Fourth Row*—RICHARD DUNKIN, FORMAN SMITH, MAX BRANYON



## ACTIVE MEMBERS OF CHI DELTA SIGMA



*First Row*—JAMES MOSELY, MARVIN BLACKLIDGE, J. D. INGRAM, JR.  
*Second Row*—SANDA B. HELMS, GEORGE NEWKIRK, BELA F. PHILLIPS  
*Third Row*—GORDAN DAVIS, R. McDONALD PHILLIPS, HAROLD G. CAIN, LOUIS BELL  
*Fourth Row*—JAMES BRANYON, BILL ARMSTRONG, JAMES MORGAN, WILLIAM F. BOGARD

## BIOGRAPHICAL SKETCH OF MEMBERS

### BILL ARMSTRONG

Sophomore, Law. Father, T. W. Armstrong; mother, Elizabeth Vann. Born, Headland, Alabama, 1904. Height, 5 ft. 7½ in.; weight, 172 lbs.; complexion, fair; hair, brown; eyes, blue; nationality, American. Home address, Headland, Alabama.

Prepared for College at: Henry County High School. Honors: Basketball; vice-president senior class; president junior class; Dramatic Club.

College Honors: Football, basketball, Sigma Delta Kappa, Business Staff Corolla, Law Forum, Sommerville Literary Society. Scholastic average, 1.83.

---

### JAMES B. BARFIELD

Freshman, Commerce. Father, L. H. Barfield, mother, Rosa E. Reeves. Born, Lineville, Ala., Nov. 10, 1905. Height, 5 ft. 9 in.; weight, 147 lbs.; complexion, fair; hair, brown; eyes blue, nationality, American. Home address, Talladega, Ala.

Prepared for College at: Talladega High School. Honors: football, baseball, tennis, basketball, track, member of Rotary golf team, '23-'24, Tampa, Fla. golf team in '26, athletic association in '23.

College Honors: Golf Team, Pre-Law Club. Scholastic average, 1.93.

---

### LOUIS BELL

Senior, Commerce and Business Administration B. S. Father, V. M. Bell; mother, Gussie Justice. Born, Albany, Alabama, October twenty-seventh, 1904. Height, 5 ft. 9½ in.; weight, 155 lbs.; complexion, dark; hair, brown; eyes, blue, nationality, American. Home address, Albany, Alabama.

Prepared for College at: Albany High School. Honors: Basketball, baseball, honor roll, DeMolay.

College Honors: Commerce Club, DeMolay. Scholastic average, 2.70.

### MARVIN THOMAS BLACKLIDGE

Sophomore, Commerce and Business Administration B. S. Father, W. S. Blacklidge; mother, Sallie Moore. Born, November thirtieth, 1908. Height, 5 ft. 10 in.; weight, 133 lbs.; complexion, fair; hair, brown; eyes, blue; nationality, American. Home address, Moselle, Mississippi.

Prepared for College at: Jones County High School, Ellisville, Mississippi. Honors: Manager baseball, manager football, manager basketball.

College Honors: Manager Freshman basketball. Scholastic average, 1.60.

---

### WILLIAM FLETCHER BOGARD

Sophomore, Arts and Science A. B. Father, B. J. Bogard; mother, Nora Jones. Born, Tuscaloosa, Alabama, 1910. Height, 5 ft. 9 in.; weight, 140 lbs.; complexion, light; eyes, blue; hair, brown; nationality, American. Home address, Fayette, Alabama.

Prepared for College at: Fayette County High School, Fayette. Honors: Football, baseball, class secretary and treasurer, Glee Club, Dramatics.

College Honors: Baseball, Pre-Law Club. Scholastic average, 1.83.

---

### EARL EUGENE BRADLEY

Senior, Commerce and Business Administration B. S. Father, S. H. Bradley; mother, Dora Norris. Born, Albany, Alabama, May nineteenth, 1907. Height, 5 ft. 10 in.; weight, 150 lbs.; complexion, light; hair, brown; eyes, blue; nationality, American. Home address, Decatur, Alabama.

Prepared for College at: Morgan County High School, Hartsell, Alabama. Honors: Glee Club, basketball, baseball.

College Honors: Commerce Club, track squad, Erosophic Literary Society. Scholastic average, 2.35.

## MAX HAMMOND BRANYON

Senior, Arts and Science A. B. Father, A. C. Branyon; mother, Martha Wilkerson. Born, Kingville, Alabama, July 25, 1905. Height, 6 ft. 1 in.; weight, 185 lbs.; complexion, medium; hair, brown; eyes, brown; nationality, American. Home address, Fayette, Alabama.

Prepared for College at: Fayette High School, Fayette, Ala. Honors: Class historian, Football, Debating Club, Glee Club.

College Honors: University Band, Officers Club, R. O. T. C. Band, Baton Club, Educational Club, Pre-Med. Club. Scholastic average, 2.60.

---

## JAMES A. BRANYAN

Junior, Arts and Science A. B. Father, A. C. Branyan; mother, Martha Wilkerson. Born, Mt. Pinson, Alabama, April 16, 1907. Height, 5 ft. 10 in.; weight, 175 lbs.; complexion, fair; hair, brown; eyes, blue; nationality, American. Home address, Fayette, Alabama.

Prepared for College at: Fayette County High School, Fayette. Honors: Football, basketball, Lincoln Literary Society.

College Honors: University band, Baton Club, Freshman football, Forensic Council. Scholastic average, 2.40.

---

## HAROLD G. CAIN

Sophomore, Pre-Law. Father, C. H. Cain; mother, Effie Garrison. Born, Macon, Mississippi, February 6, 1907. Height, 5 ft. 9 in.; weight, 175 lbs.; complexion, dark; hair, brown; eyes, blue; nationality, American. Home address, Fayette, Alabama.

Prepared for College at: Fayette County High School, Fayette. Honors: President Senior class, Debating Club, Football.

College Honors: Y. M. C. A. Scholastic average, 2.00.

## GORDEN DAVIS

Junior, Law. Father, Wilburn E. Davis; mother, Anna Calhoun. Born, Abbeville, Alabama, January 7, 1903. Height, 5 ft. 5 in.; weight, 140 lbs.; complexion, dark; hair, black; eyes, brown, nationality, American. Home address, Abbeville, Alabama.

Prepared for college at: Henry County High School, Headland, Alabama. Honors: Baseball, Literary Societies.

College Honors: Pi Mu Epsilon, Business Manager 1926 Corolla, Junior faculty. Scholastic average, 3.31.

---

## CHARLES RALPH DODSON

Freshman, Commerce and B. A. Father, C. M. Dodson; mother, Gertrude Whittley. Born, January 10, 1910. Height, 5 ft. 7 in.; born in Winfield, Ala.; weight, 130 lbs.; complexion, fair; hair, brown; eyes, blue; nationality, American. Home address, Fayette, Alabama.

Prepared for college at: Fayette County High School. Honors, football, basketball, dramatic club, Literary Society.

College Honors: Y. M. C. A., Commerce Club. Scholastic average, 1.70.

---

## RICHARD MARTIN DUNKIN

Sophomore, Commerce and Business Administration B. S. Father, L. B. Dunkin; mother, Francis Mayfield. Born, Tuscaloosa, Alabama, September 7, 1907. Height, 5 ft. 11 in.; weight, 153 lbs.; complexion, fair; hair, brown; eyes, blue; nationality, American. Home address, West Palm Beach, Florida.

Prepared for College at: Tuscaloosa High School. Honors: Football, baseball, basketball, Debating Club, Dramatics.

College Honors: Baseball squad, basketball squad, Delta Sigma Pi, tennis team, Commerce Club, Druid City Rifles. Scholastic average, 2.00.

### GETHERAL DINK HALSTEAD

Senior, Arts and Science A. B. Father, D. C. Halstead; mother, Dia Balkcomb. Born, Midland City, Alabama, May 21, 1915. Height, 5 ft. 9 in.; weight, 13 lbs.; complexion, light; hair, brown; eyes, blue; nationality, American. Home address, Headland, Alabama.

Prepared for College at: Henry County High School, Headland. Honors: Dramatics, Class Orator.

College Honors: Corolla Staff, Crimson-White Staff, Sigma Delta Kappa, Masons, Pre-Law Club. Scholastic average, 2.87.

---

### SANDA B. HELMS

Senior, Commerce and Business Administration B. S. Father, John R. Helms; mother, Ida Phillips. Born, Blue Spring, Alabama, April 12, 1905. Height, 5 ft. 8 in.; weight, 148 lbs.; complexion, light, hair, brown; eyes, blue; nationality, American. Home address, Blue Springs, Alabama.

Prepared for College at: Newton Institute, Newton, Alabama, Authomatic Literary Society. Honors: Basketball, baseball, vice-president Senior Class.

College Honors: Delta Sigma Pi, Sigma Eta, Euphian Literary Society, Assistantship in Accounting, Junior Faculty, Alternate Executive Committee, Officers Club, Cadet Captain, Regimental Adjutant, Commerce Club. Scholastic average, 3.80.

---

### EDGAR PAUL HODGES

Junior, Commerce. Father, J. P. Hodges; mother, Mannie Freeman. Born, Danville, Alabama, October 25, 1906. Height, 5 ft. 9 in.; weight, 170 lbs.; complexion, fair; hair, black; eyes, blue; nationality, America. Home address, Hartselle, Alabama.

Prepared for College at: Morgan County High School. Honors: Football, Baseball, Track team, Literary Society, Annual Staff, Dramatic Club, Glee Club.

College Honors: Y. M. C. A. Scholastic average, 2.31.

### JOHN D. INGRAM, JR.

Junior, Law. Father, John D. Ingram; mother, Tyra Hill. Born, Delta, Alabama, December 19, 1901. Height, 5 ft. 11 in.; weight, 145 lbs.; complexion, fair; hair, auburn; eyes, brown; nationality, American. Home address, Delta, Alabama.

Prepared for College at: Clay County High School, Delta. Honors: Baseball, football, Manager Student Athletic Association, Business Manager of "The Blue and White" (School paper).

College Honors: Officers Club, Euphian Literary Society, President Philomathic Literary Society-1925, Law Forum, President Alpha Phi Epsilon (Literary Society), Tau Kappa Alpha (Debating), Phi Alpha Delta (Legal), Vice-president Forensic Council-1926, Debating team, Jassons, Business Manager "The Crimson-White" 1927, (College Paper). Scholastic average, 2.20.

---

### LESLIE L. KEY

Sophomore, Engineering. Father, Henry M. Key; mother, Lelia Holder. Born, Laurel, Miss., January 23, 1908. Height, 5 ft. 10 in.; weight, 140 lbs.; complexion, fair; hair, black; eyes, brown; nationality, American. Home address, Morton, Miss.

Prepared for College at: Morton High School. Honors: track, basketball, baseball, football, Literary Society, and Scholarship.

College Honors: A. S. C. E., A. A. E. Scholastic average, 3.1.

---

### JAMES N. MOSELY

Junior, Engineering. Father, S. H. Mosely; mother, Lula Morgan. Born, Selma, Alabama, December 21, 1907. Height, 5 ft. 9 in.; weight, 148 lbs.; complexion, fair; hair, brown; eyes, brown; nationality, American. Home address, Tuscaloosa, Alabama.

Prepared for College at: Tuscaloosa High School. Honors: Baseball, Debating Club, Honor Roll.

College Honors: Honor Roll, A. A. E. Scholastic average, 2.90.



### JIM DONALD MORGAN

Sophomore, A. B. Father, J. T. Morgan; mother, Clara Hipp. Born, Pineapple, Alabama, December 8, 1906. Height, 6 ft.; weight, 160 lbs.; complexion, fair; hair, black; eyes, blue; nationality, American. Home address, Jones Mill, Alabama.

Prepared for College at: Jones High School. Honors: Debating Club, Glee Club, Literary Society, Track, Basketball, Football, Honor Roll, Dramatic Club, President of Senior Class.

College Honors: Y. M. C. A. Literary Society. Scholastic average, 2.31.

---

### JAMES BRYANT MORGAN

Freshman, Law. Father, C. P. Morgan; mother, Ella Johnson. Born, Honoraville, Alabama, October 22, 1903. Height, 6 ft. 1 in.; weight, 170 lbs.; complexion, medium; hair, black; eyes, brown; nationality, American. Home address, Luverne, Alabama.

Prepared for College at: Crenshaw County High School, Luverne. Honors: Debating Club, football, baseball, Valedictorian.

College Honors: Y. M. C. A., Law Forum. Scholastic average, 2.75.

---

### GEORGE EDGAR NEWKIRK

Senior, Commerce and Business Administration B. S. Father, H. B. Newkirk; mother, Ella Prather. Born, Obion, Tennessee, January 26, 1905. Height, 5 ft. 9 in.; weight, 160 lbs.; hair, brown; eyes, blue; complexion, fair; nationality, American. Home address, West Helena, Ark.

Prepared for College at: Charleston High School, Charleston, Mississippi. Honors: football, baseball, basketball, track, Glee Club, President Senior Class.

College Honors: Commerce Club, football, baseball. Scholastic average, 2.17.

### JOSEPH JACKSON PHILLIPS

Freshman, Commerce and Business Administration. Father, B. A. Phillips; mother, Bessie Mae McDonald. Born, Sylacauga, Alabama, August 1, 1910. Height, 5 ft. 8½ in.; weight, 155 lbs.; complexion, fair; hair, brown; eyes, blue; nationality, American. Home address, Sylacauga, Alabama.

Prepared for College at: Sylacauga High School. Honors: football, baseball, basketball, Glee Club, Debating Club, Dramatic Club, Sec. Treas., Sophomore Class.

College Honors: Y. M. C. A., Commerce Club. Scholastic average, 1.72.

---

### RAYMOND McDONALD PHILLIPS

Sophomore, Engineering. Father, Bela A. Phillips; mother, Bessie Mae McDonald. Born, Sylacauga, Alabama, July 24, 1908. Height, 5 ft. 6 in.; weight, 136 lbs.; complexion, fair; hair, black; eyes, blue; nationality, American. Home address, Sylacauga, Alabama.

Prepared for College at: Sylacauga High School, Sylacauga. Honors: Salutorian of Class of 1926, Literary Societies, Chi Delta Theta (Honor Fraternity), Annual Staff '24.

College Honors: Honor Roll, Y. M. C. A., Sophomore Committee. Scholastic average, 3.65.

---

### BELA FOSTER PHILLIPS

Senior, Arts and Science A. B. Father, B. A. Phillips; mother, Mae McDonald. Born, Sylacauga, Alabama, June 5, 1906. Height, 5 ft. 6 in.; weight, 135 lbs.; complexion, dark; hair, black; eyes, brown; nationality, American. Home address, Sylacauga, Alabama.

Prepared for College at: State Secondary Agriculture School, Sylacauga, Alabama. Honors: Debating Club, Basketball, Baseball, Dramatics.

College Honors: Erosophic Literary Society. Scholastic average, 2.17.

#### MURRAY LLOYD SCREVEN, Jr.

Senior, Commerce and Business Administration B. S. Father, M. L. Screven, Sr.; mother, Adele Sprague. Born, Mobile, Alabama, February 22, 1906. Height, 5 ft. 10 in.; weight, 141 lbs.; complexion, fair; hair, light; eyes, blue; nationality, American. Home address, Mobile, Alabama.

Prepared for College at: Mobile High School. Honors: Basketball, Honor Roll.

College Honors: Commerce Club, Assistant in Accounting. Scholastic average, 3.70.

#### WILLIAM MARTIN STEELE

Sophomore, A. B. Father, Will Steele; mother, Mattie Crooks. Born, January 21, 1909. Height, 5 ft. 11 in.; weight, 155 lbs.; complexion, medium; hair, brown; eyes, brown; nationality, American. Home address, Aliceville, Alabama.

Prepared for College at: McCallie School, Chattanooga, Tenn, 2 years, Alabama Military Institute, Anniston, Alabama. Honors: Football, Track, Secretary of Daniel Webster, Literary Society, Student Council.

College Honors: Excelsior. Scholastic average, 2.21.

#### JAMES FORMAN SMITH

Freshman, Law. Father, Eugene Smith; mother, Elizabeth Forman. Born, Sylacauga, Alabama, July 3, 1903. Height, 6 ft. 2 in.; weight, 196 lbs.; complexion, dark; hair, brown; eyes, brown; nationality, American. Home address, Sylacauga, Alabama.

Prepared for College at: Gulf Coast Military Academy, Gulfport, Mississippi. Honors: DeMolay, Track.

College Honors: Masonic Club, Track squad, Band. Scholastic average, 3.07.

#### WILLIAM JAY TINDLE

Senior, Law. Father, W. H. Tindle; mother, Gussie Monroe. Born, Ft. Payne, Alabama, October 19, 1905. Height, 5 ft. 9 in.; weight, 143 lbs.; complexion, light; hair, brown; eyes, blue; nationality, American. Home address, Ft. Payne, Alabama.

Prepared for College at: DeKalb County High School, Ft. Payne. Honors: Glee Club, Dramatics, President Junior Class, Football, Poet of Graduating Class.

College Honors: Sigma Delta Kappa (Legal Fraternity), Philomatic Literary Society, Law Forum, Sommerville Debating Club, Orator, Senior Law Class. Scholastic average, 2.20.

### HERSHEL FULTON COLLINS

Sophomore, Electrical Engineering. Father, W. A. Collins; Mother, Euline Finch Collins. Born, Vernon, Alabama, Feb. 10, 1908. Height 5 ft. 11 inches; weight 145 pounds; complexion, light; hair, brown; eyes, blue; nationality, American. Home address, Guin, Alabama.

Prepared for college at Marion County High School, Guin, Ala. Honors: Dramatic Club, Basketball, Cheer Leader.

College Honors: American Association of Engineers, Y. M. C. A., American Society of Electrical Engineers.

### CHARLES EDWARD DENMAN

Sophomore, Electrical Engineering. Father, John C. Denman; mother, Dorcas Catherine Denman. Born at Birmingham, Ala., Dec. 15, 1907. Height 5 ft. 11 inches; weight 160 pounds; complexion, medium; hair, brown; nationality, American. Home address, Birmingham, Ala.

Prepared for college at Shades Cahaba High School. Honors: Football, Dramatic Club, Literary Society.

College Honors: Y. M. C. A.; American Association of Engineers, Basketball.

### CLARENCE WILFRED FULTON

Junior, Mechanical Engineering. Father, Dorman Lafayette Fulton; mother, Julia Gunn Fulton. Born, Bessemer, Ala., November 26, 1905; height, 5 ft. 11 inches; weight, 170 pounds; complexion, fair; hair, brown; eyes, blue; nationality, American. Home address, 2331 Dartmouth Ave., Bessemer, Ala.

Prepared for college at Bessemer High School, Bessemer, Ala. Honors, Football, Track, Literary Society, Hi-Y Club.

College Honors: DeMolay Club, Y. M. C. A., Society of American Military Engineers, American Association of Engineers.

---

## ALUMNI

J. LANE BLACKLIDGE, '26  
Goodyear Tire and Rubber Co.  
New Orleans, La.

LEWIS BONIFAY, '26  
Dixie Construction Co.  
Birmingham, Ala.

LUCIAN BRYANT, '25  
Union Central Life Insurance Co.  
Birmingham, Ala.

ROBERT COKER, '26  
Coker Lumber Co.  
Selma, Ala.

WILBUR EICH, '26  
Eich and Son  
Tuskegee, Ala.

EMMITT FULMER, '26  
Kirshbaum Clothing Co.  
St. Louis, Mo.

GEORGE MCCAIN, '25  
McCain Motor Co.  
Rockford, Ala.

J. T. MORGAN, '26  
Southern Bell Telephone and Telegraph Co.  
Birmingham, Ala.

ROY PAUL, '26  
Utterbeck and Stenson Law Firm  
Durant, Oklahoma.

VIRGINIUS W. JONES, '26  
Alabama Power Co.  
Tallassee, Ala.

## P E T I T I O N

We the undersigned, students in good standing in the Chi Delta Sigma Fraternity located at The University of Alabama, having hereunto attached our individual and class records, a history of our alma mater, and our organization, do hereby petition Alpha Sigma Phi Fraternity to grant to us and to our successors a Charter for a Chapter of the Fraternity at this institution and to assign us a Charter Letter.

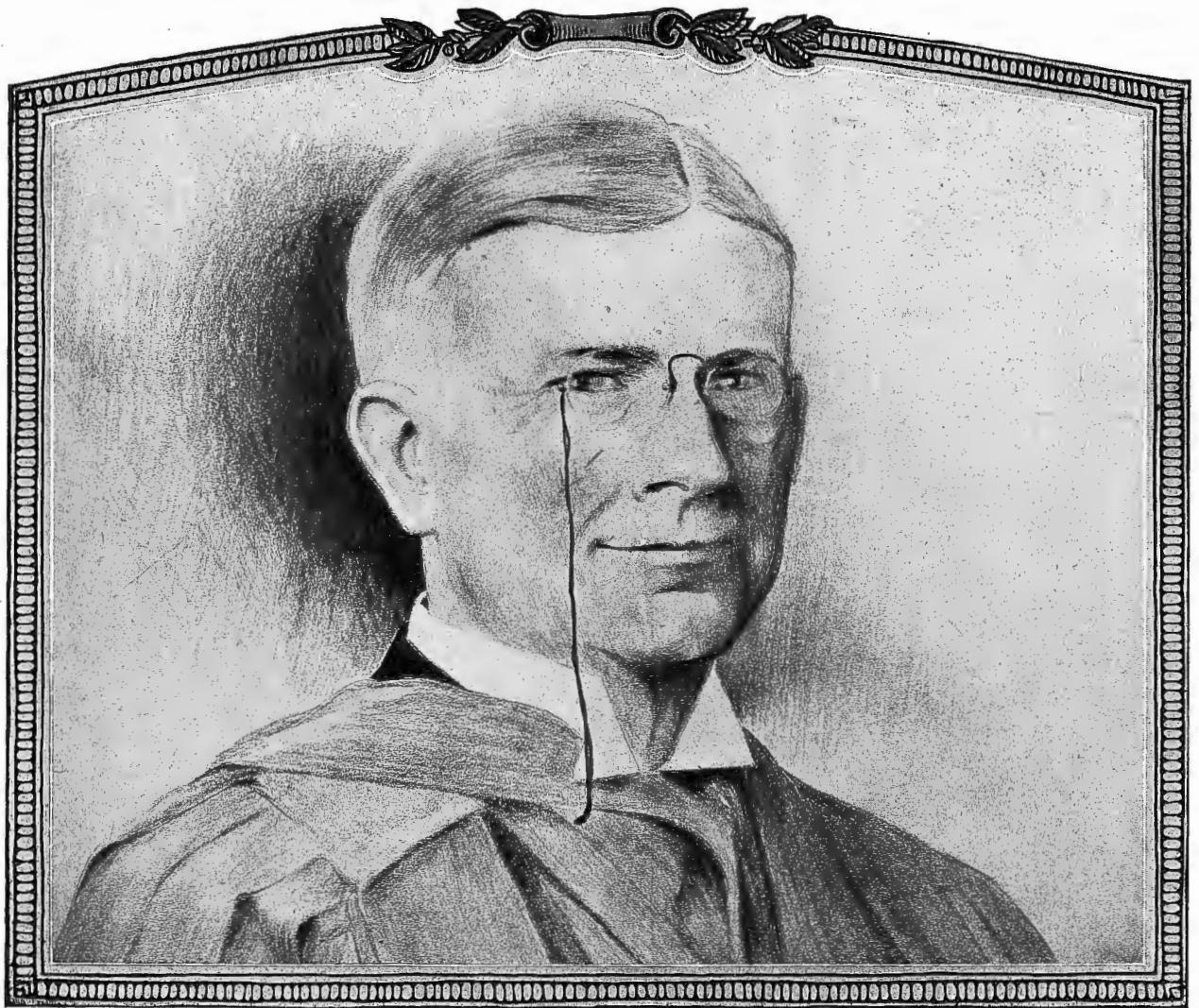
Should this Charter be granted we agree to support the Constitution and By-Laws, Rules and Regulations, Customs, Laws and Traditions of Alpha Sigma Phi Fraternity, to perform its rituals, and to perform our part in the government and support of the Fraternity as such, and, under its laws govern ourselves as a Chapter in harmony and good fellowship, and that we and our successors shall work for the best interest and advancement of the Fraternity wherever and whenever we may, it being understood that nothing in this pledge shall in any way conflict with our religious or political scruples, or our duties and obligations to our college, our family, ourselves, our country, or our God.

IN TESTIMONY WHEREOF, we have hereunto set our hands and seals the.....day of  
.....1927.

BILL ARMSTRONG  
JAMES B. BARFIELD  
LOUIS BELL  
LUCIEN BRYANT  
M. T. BLACKLIDGE  
J. LANE BLACKLIDGE  
LEWIS BONIFAY  
WILLIAM A. BOGARD  
EARL E. BRADLEY  
MAX H. BRANYON  
JAMES A. BRANYON  
H. G. CAIN  
JACK COLLINS  
BOB COKER  
GORDON DAVIS  
C. RALPH DODSON  
RICHARD M. DUNKIN  
FOSTER EICH  
WILFRED FULTON  
G. D. HALSTEAD

SANDA B. HELMS  
GEORGE HINTON  
E. PAUL HODGES  
JOHN D. INGRAM, JR.  
VIRGINIUS W. JONES  
LESLIE L. KEY  
JAMES N. MOSELY  
J. T. MORGAN  
JIM DONALD MORGAN  
J. BRYANT MORGAN  
GEORGE E. NEWIRK  
ROY PAUL  
JOSEPH J. PHILLIPS  
R. McDONALD PHILLIPS  
BELA FOSTER PHILLIPS  
MURRAY L. SCREVEN, JR.  
JAMES F. SMITH  
WILLIAM M. STEELE  
WILLIAM J. TINDLE





PRESIDENT GEORGE H. DENNY

UNIVERSITY OF ALABAMA  
University, Alabama

Office of the President,  
GEORGE H. DENNY

To The Authorities Of  
ALPHA SIGMA PHI FRATERNITY:

Gentlemen:

I desire to commend to you in the highest possible terms the group of young men banded together as a local fraternity under the name of Chi Delta Sigma. This group is petitioning for a charter in your organization.

I am glad to say to you that we shall welcome the coming to our campus of Alpha Sigma Phi. There is tremendous need of additional fraternities on the campus, in view of the unprecedented growth of the student-body within recent years.

My judgment is that a careful investigation of the matter will convince you that you have a splendid opportunity here to enter a most promising field. Fortunately the personnel of the group that is making application to you for a charter represent an unusually fine body of young men from every point of view.

I do not hesitate to commend these petitioners in the highest terms.

Believe me,

Sincerely yours,

GEO. H. DENNY, *President.*

UNIVERSITY OF ALABAMA

University, Alabama

Office of The Dean

February 26, 1927.

ALPHA SIGMA PHI,

Gentlemen:

I am informed by members of Chi Delta Sigma, a local fraternity organized at the University of Alabama in 1925, that it has petitioned you for admission to membership. It gives me pleasure to write you in their behalf. I have examined the records of the thirty students and alumni, who, I am informed, constitute the membership of this local fraternity, and whose names appear below. I find that the scholarship of this group is about the same as the average scholarship of the fraternities already established at the University. I believe also that this group ranks as high in character and personality as our average group of fraternity men. Several of this group are among our best students and finest characters. In view of these facts, I should be glad to see Chi Delta Sigma admitted to membership in Alpha Sigma Phi.

Very truly yours,

C. H. BARNWELL, *Dean.*

ALUMNI:

LEWIS A. BONIFAY  
MAX BRANYON  
LUCIEN E. BRYANT  
ROBERT COKER, JR.  
GORDON DAVIS  
VIRGINIUS W. JONES  
GEORGE A. MCCAIN  
J. T. MORGAN  
ROY PAUL

CLASS OF '27

J. LANE BLACKLIDGE  
SANDA B. HELMS  
BELA F. PHILLIPS  
MURRAY L. SCREVEN  
GEORGE E. NEWKIRK

CLASS OF '28

EARL E. BRADLEY  
JAMES A. BRANYON  
EMMETT FULMER  
G. DINK HALSTEAD  
J. D. INGRAM

CLASS OF '29

W. FOSTER EICH, JR.  
JAMES MOSELY  
BILL ARMSTRONG  
JAMES B. MORGAN  
E. PAUL HODGES

PLEDGES

MARVIN T. BLACKLIDGE  
WM. FLETCHER BOGARD  
HAROLD G. CAIN  
RICHARD M. DUNKIN  
J. C. LOWERY  
JAMES D. MORGAN  
R. McDONALD PHILLIPS  
LESLIE L. KEY  
WILLIAM STEELE  
GEORGE HINTON  
JOSEPH PHILLIPS  
RALPH DODSON  
JAMES BARFIELD  
C. WILFRED FULTON  
JACK COLLINS  
CHARLES DENMAN

University, Ala., Jan. 28, 1927.

ALPHA SIGMA PHI FRATERNITY,

Gentlemen:

The opportunity of saying a word to you on behalf of our local fraternity, Chi Delta Sigma, which is petitioning for admission to your body, appeals to me as a real privilege. I do not believe that there is a finer group of boys on the University campus than the Chi Delta Sigma. They are boys with real social charm, good scholarship, splendid personality, and high ideals. They impress me as possessing in high degree the requisite qualities for the fraternal life.

You doubtless know that the University of Alabama is noted for the number and splendid morale of its fraternities. No more elegant fraternity buildings, I believe, can be found on any college campus, and I am sure that our fraternity rows are unsurpassed. The administration is very friendly to fraternities, and welcomes with open handedness the advent upon the campus of the established national organizations.

Personally I would be glad to see you adopt our Chi Delta Sigma boys, and undoubtedly you would find them worthy in every respect.

Very truly yours,

A. B. MOORE.

*Prof. of History and Dean of the Graduate School, and Member of Phi Sigma Kappa Fraternity.*

---

UNIVERSITY OF ALABAMA  
School of Commerce and Business Administration  
Drawer J  
University, Alabama

LEE BIDGOOD, *Dean.*

January 28, 1927.

ALPHA SIGMA PHI FRATERNITY,

Chicago, Illinois.

Gentlemen:

The Chi Delta Sigma Fraternity of the University of Alabama is petitioning your fraternity for chapter membership. I can recommend the granting of their petition. Nine of the active members are students in the School of Commerce and Business Administration, and known to me personally. With the others I am not acquainted. Judging the whole group by the nine commerce men, it is a good average or better than average fraternity group.

All of the men are personally acceptable. Two of them, Mr. Helms and Mr. Screven, are assistants in the accounting department, and are rightly recognized as among the strongest men in the senior class in commerce. The other two commerce seniors, Blackledge and Newkirk are both good men. I am sure that there are others in the lower classes who will develop the same strength and leadership. On the whole, it seems to me that this group would be a good one with which to enter the University of Alabama.

Very truly yours,

LEE BIDGOOD,

*Dean, School Com. and Bus. Adm.*

LB.J.

UNIVERSITY OF ALABAMA  
University, Alabama

SCHOOL OF EDUCATION

SUMMER SCHOOL

March 31, 1927.

ALPHA SIGMA PHI FRATERNITY,

Dear Sirs:

I desire to commend to you the fine body of University students who constitute the membership of Chi Delta Sigma, a local fraternity which is petitioning for affiliation with your fraternity.

This local fraternity has proved its stability and worth since its organization more than a year ago. High standards have been maintained and the group has given evidence of their serious purpose in maintaining fraternity ideals.

Sincerely yours,

JAMES J. DOSTER,  
*Dean, School of Education.*

---

UNIVERSITY OF ALABAMA  
University, Alabama

SCHOOL OF LAW,  
Office of the Dean

February 19, 1927.

ALPHA SIGMA PHI,  
National Fraternity.

Gentlemen:

I understand that the Chi Delta Sigma, a local fraternity at the University of Alabama, is petitioning for membership in your organization.

This local fraternity is composed of twenty-one members, four of whom are in the Law School. I understand that this is a fine group of young men, and in every way worthy of membership in your organization.

The University of Alabama is growing rapidly in numbers, buildings, and equipment, and it seems to me that this is a peculiarly opportune time for Alpha Sigma Phi to be represented on our campus. It is with pleasure that I recommend this group of young men for your consideration, and I sincerely hope that, after due examination, you will decide to award them a charter.

Very truly yours,

A. J. FARRAH, *Dean.*



UNIVERSITY OF ALABAMA  
University, Alabama

COLLEGE OF ENGINEERING  
GEO. JACOB DAVIS, JR., *Dean.*

February 22, 1927.

ALPHA SIGMA PHI FRATERNITY,

Gentlemen:

I wish to commend to your favorable consideration the application of Chi Delta Sigma Fraternity for charter in your fraternity.

I am acquainted with only the engineering student members of Chi Delta Sigma. I favor, in general however, the association of the students in fraternity organizations. If the other members of the fraternity are of the calibre of the engineering student member I am sure the granting of a charter will be to the benefit of Alpha Sigma Phi.

Very truly yours,

GEO. JACOB DAVIS, JR.,  
*Dean, College of Engineering.*

---

UNIVERSITY OF ALABAMA  
University, Alabama

OFFICE OF THE DEAN OF WOMEN

February 10, 1927.

ALPHA SIGMA PHI,

I have been asked to write my opinion of Chi Delta Sigma, local fraternity, which is petitioning Alpha Sigma Phi.

I am personally acquainted with some of the members of this fraternity but the members who are known to me possess my admiration and respect. My inquiries concerning the fraternity make me believe that they are law-abiding citizens, honorable gentlemen, and earnest students. I shall be glad to talk personally with the Alpha Sigma Phi inspector when that officer visits the University of Alabama. I earnestly hope that your fraternity will grant Chi Delta Sigma's petition.

MARY BURKE, *Dean of Women.*

FRATERNITY OF PHI GAMMA DELTA  
THETA CHAPTER  
University, Alabama

ALPHA SIGMA PHI,

December 7, 1926.

We understand that the local fraternity of Chi Delta Sigma is petitioning you for a chapter and we would like to recommend this group to you.

The University of Alabama is an admirable place for fraternity expansion. Fraternity life is a well established tradition here and is now a vital part of the school life. The University authorities are in sympathy with fraternities and their policy is one of help for fraternity well-being.

The fraternity of Chi Delta Sigma has made an admirable start here on the campus. They have been conservative in their membership and careful of their organization. This group is very representative of our student body, which stands high among southern schools. These men deserve much credit for their work in school life and for their organization.

Sincerely,

THETA OF PHI GAMMA DELTA.

---

DELTA ETA CHAPTER  
DELTA TAU DELTA  
University, Ala.

January 28, 1927.

TO WHOM IT MAY CONCERN:

We have been informed by the Local Fraternity, Chi Delta Sigma, that it is their intention to petition your Fraternity for membership into your Fraternity as a Chapter.

We feel that the men who compose this local chapter could not fail to uphold the honor and high ideals of Alpha Sigma Phi should it be their privilege to secure from you the recognition they seek. In our opinion, they compare very favorably with all the Chapters of National Fraternities now on the campus. We, having known the members of Chi Delta Sigma, individually and as a chapter, are best prepared to tell Alpha Sigma Phi that they could make no mistake by entrusting a charter in these men. Having been neighbors and classmates of theirs, we have found them to be gentlemen in every respect and men any fraternity would be proud of.

Very sincerely yours,

DELTA ETA OF DELTA TAU DELTA,  
C. W. WHITE, JR., *Secretary*.

---

PI KAPPA PHI

OMICRON CHAPTER.

University, Alabama

ALPHA SIGMA PHI FRATERNITY,

Gentlemen:

We heartily recommend Chi Delta Sigma, and would gladly receive Alpha Sigma Phi on the campus.

Sincerely yours,

PI KAPPA PHI FRATERNITY,  
W. H. LINDSEY, JR., *Secretary*.

SIGMA CHI FRATERNITY

IOTA IOTA CHAPTER

University, Alabama

November 30, 1926.

TO THE ALPHA SIGMA PHI FRATERNITY:

Gentlemen:

Iota Iota of the Sigma Chi Fraternity recommends with pleasure the Chi Delta Sigma local Fraternity for your favorable consideration.

Chi Delta Sigma is composed of men who are well represented in student activities, and who are universally popular. All in all, it is an exceptionally strong local.

If Alpha Sigma Phi wishes to enter an institution which is confessedly a good Greek letter field and further more, if it wishes to add to its chapter roll a group of splendid substantial men, your national organization will do well to favor the Chi Delta Sigma Fraternity at the University of Alabama.

Sincerely yours,

WILLIAM MORRISON,  
*For the Chapter.*

---

ALPHA PHI CHAPTER  
—OF—  
THETA CHI FRATERNITY  
University, Ala.

December 4, 1926.

TO WHOM IT MAY CONCERN:

On behalf of Alpha Phi Chapter of Theta Chi I take great pleasure in recommending Chi Delta Sigma as a group of highly principled students. It has been my pleasure to be in close contact with some of these men and at all times and under all conditions they have measured up to the most that could be expected of them.

It is the belief of Theta Chi that Alpha Sigma Phi would be benefited by carefully considering Chi Delta Sigma as a petitioning body.

Very truly yours,

CHAS. D. BOGART, *President,*  
*Alpha Phi of Theta Chi.*

PHI SIGMA KAPPA FRATERNITY  
OMICRON DEUTERON CHAPTER  
University, Alabama

December 7, 1926.

*To the Grand Council of the*

ALPHA SIGMA PHI FRATERNITY:

Feeling that there is an excellent field for more national fraternities at the University of Alabama, and knowing the members of Chi Delta Sigma, Phi Sigma Kappa takes great pleasure in recommending them to you.

Hoping that you will give this group of young men your careful consideration, we are,

Sincerely,

OMICRON DEUTERON OF PHI SIGMA KAPPA,  
FRANK J. WEST, *President*.

---

SIGMA ALPHA EPSILON  
Alabama Mu  
1105 University Avenue  
Tuscaloosa, Ala.

December 16, 1926.

ALPHA SIGMA PHI FRATERNITY,

Gentlemen:

Alabama Mu, Sigma Alpha Epsilon, takes great pleasure in commending to your favorable consideration, Chi Delta Sigma, local fraternity of the University of Alabama.

Sincerely yours,

WYATT C. SIMPSON, *Correspondent*.

---

THE LAMBDA CHI ALPHA FRATERNITY  
ALPHA PHI ZETA  
University, Alabama

November 30, 1926.

CHI DELTA SIGMA,  
University, Alabama.

Gentlemen:

Alpha Phi of Lambda Chi Alpha takes great pleasure in recommending you unconditionally to Alpha Sigma Phi. The majority of your members are known to us personally and a glance at your roll convinces one of the absolute justification of such a recommendation.

It would gratify us very much to learn that you have petitioned successfully and if any further endorsement of your petition be requested from us, we advise you of our willingness to assist you.

Wishing you success, we are,

Sincerely yours,

ALPHA PHI OF LAMBDA CHI ALPHA,  
By JOE J. SMITH, JR.

STATE OF ALABAMA  
TUSCALOOSA COUNTY

Wm. W. Brandon, *Judge of Probate.*  
C. N. Maxwell, Sr., *Chief Clerk.*

Tuscaloosa, Ala. March 31, 1927.

To the ALPHA SIGMA PHI FRATERNITY,  
Chicago, Ill.

Gentlemen of the Alpha Sigma Phi Fraternity:

I am writing you this letter to most cordially recommend the Chi Delta Sigma Local at the University of Alabama applying to your organization for a Charter.

It is my pleasure to personally know this group of young men who compose this Chapter which has 28 active members and 10 alumni members. In all of my fraternity activities I do not believe I have ever met a group of young men who impressed me more favorably as fraternity material than those composing the Local applying to you.

Of the 28 active members there are 10 in the School of Commerce and Business Administration, 6 in the School of Law, 4 in the Engineering School and 8 in other Schools of the institution. It was my great privilege recently to be a guest of this Local in their home and I found them to be among the outstanding men of the institution. Having confidence in my judgment of fraternity material based upon my experience as an active member of the Sigma Alpha Epsilon fraternity, having served them as their Emminent Supreme Arcon for two terms and later as its honorary head I have had the privilege of being thrown with a great many fraternity men of the various institutions of our land and desire to say that I am profoundly impressed that the group of young men applying to you as in every way representing the highest type of American manhood and the best fraternity material.

The University of Alabama in my opinion is the coming institution of the South. As you know it is supported by the State of Alabama and has an endowment of coal lands. Its present matriculation is some 2300 men and women from the best homes in the commonwealth and it is growing by leaps and bounds. This Local represents in my opinion the best element of the student body. They have representatives in many leading literary and honorary societies of the institution and have had as business manager of the paper of the student body and the Annual which is issued each year as well as having officers in the R. O. T. C. In fact they make up a body of young men that will rank with the standard of any fraternity. I cannot too highly recommend them to your organization for favorable consideration nor cannot I too strongly urge you to grant them a Charter and penetrate this the best section of the South by establishing a Chapter of your fraternity at the University of Alabama which in my opinion will soon be the leading University of this southern land.

I am naturally interested in the development of the fraternity life having been an active worker in these lines for years and having occupied a high place as honorary head of a fraternity. I believe I am qualified to pass upon the merits of all members and having investigated I do not hesitate to say that this Local measures up in every particular and I most cordially commend them to your favorable consideration. In my opinion a careful investigation on your part of this splendid chapter and its surroundings will impress you to such an extent that you will not hesitate to grant them a Charter, thereby reflecting honor upon your National Organization.

Yours very truly,

WM. W. BRANDON,  
*Past E. S. A. of S. A. E. and former  
Governor of Alabama.*