

PETITION FOR CHARTER

from

ALPHA SIGMA PHI FRATERNITY

by

the members of

ALPHA DELTA KAPPA FRATERNITY

Missouri Valley College, Marshall, Missouri

DELTA KAPPA to ALPHA SIGMA PHI

P E T I T I O N

WE, THE UNDERSIGNED, students in good standing in Missouri Valley College, located at Marshall, Missouri, hereunto having attached our individual and class records, a history of our alma mater, and our organization, do hereby petition Alpha Sigma Phi Fraternity to grant to us and to our successors a Charter for a Chapter of the Fraternity at this institution and to assign us a Chapter Letter.

Should this Charter be granted we agree to support the Constitution and By-Laws, Rules and Regulations, Customs, Laws and Traditions of Alpha Sigma Phi Fraternity, to perform its rituals, and to perform our part in the government and support of the Fraternity as such, and under its laws govern ourselves as a Chapter in harmony and good fellowship, and that we and our successors shall work for the best interest and advancement of the Fraternity wherever and whenever we may, it being understood that nothing in this pledge shall in any way conflict with our religious or political scruples, or our duties and obligations to out college, our family, ourselves, our country, or our God.

IN TESTIMONY WHEREOF, we have hereunto set our hands and seals the 2nd day of MAY, 1945.

Robert Lynn Browning

Robert

Harvey Arthur Jr.

Kenneth R. Love

Alfred O. Miegert

Jack D'Andrue

Robert E. Harris

Emerson T. Cannon

Thos. G. Allin Jr.

Walter Allen Shuman

Donald M. Mitty

Francis C. Barenbrugge

Charles L. Bates Jr.

John A. Mc Cormack

DELTA KAPPA to ALPHA SIGMA PHI

P E T I T I O N

Van Marcell Robertson

William Emil Koebe

Allen Kauffman

William A. Schmiede Jr.

Joseph E. Hagdora

William R. Philipssen

Kenneth S. Barry.

Lee C. Northcliffe Jr.

James M. Wisely

HISTORY OF MISSOURI VALLEY COLLEGE

Missouri Valley College was chartered in 1888 and opened its first session September 17, 1889. It was the Cumberland Presbyterian College of the Synods of Missouri, Kansas, Nebraska and Colorado, and was regarded as the successor of two earlier colleges of the Church, which had performed a noble service, but had been closed for lack of financial support. Chapel Hill College (1840-1861) was located southwest of Odessa in Lafayette County. With its history are associated as teachers or graduates such names as Rev. R. D. Morrow, Gov. John S. Marmaduke, A. W. Ridings, Rev. James Martin, John C. Cobb, and Senator F. M. Cockrell. McGee College at College Mound in Macon County exerted a wide influence from 1852 to 1874. Among its teachers were Azel Freeman, J. M. Howard, Ben Eli Guthrie, James Dysart, and its president, Rev. J. B. Mitchell. In later years another Cumberland Presbyterian School, Ozark College at Greenfield, Missouri, closed its doors and transferred its records to Missouri Valley College.

In 1874 a movement was started to establish a Synodical College, but only after a minimum of \$100,000 should be made available. An educational commission headed by Rev. James Henry Houx of Warrensburg undertook to raise this sum and after several years of effort did secure \$54,000. Thereafter the movement lagged until James E. Ritchey of Sedalia and others interested in the proposed college invited various towns to offer bids for its location. Marshall offered \$100,000 and the Educational Commission, now under the leadership of Rev. J. B. Mitchell, voted to accept it.

When the College opened, Rev. Erasmus D. Pearson was president of The Board of Trustees and A. J. McGlumpy, Chairman of the Faculty. Dr. McGlumpy administered the affairs of the infant college until April 1, 1890 when Rev. William H. Black, D.D., LL.D. of Lucas Avenue Presbyterian (now Kingshighway) church, St. Louis, became its first president.

The high standards set by the college from the start attracted many promising students, and gave the school a prominent position in the denomination and in the state of Missouri. President Black was widely known as a pulpit orator, a church leader, and a progressive educator. He long took an active part in the affairs of The Missouri Teacher's Association and The Missouri College Union. When the plans for the union of The Cumberland Presbyterian Church and The Presbyterian Church U.S.A. in 1906 were carried through, President Black served as Chairman of the Committee conducting the negotiations for his church. At the time the memberships of the two churches in Missouri were about equal. By this union the college became the institution of the Presbyterian Synod of Missouri U.S.A., and is now under its control.

The College has, through the years, maintained close relations with the Synod and the churches. Many of its graduates have become leaders in Presbyterian and other Christian churches both as ministers and laymen. Alumni are filling responsible positions in many states.

From its earliest years the college has been closely identified with its own local community. It regards itself, in a very fundamental way, as the college of Saline County, and is proud to number a very large group of its responsible citizens among its former students. In attitude

the college has been liberal and non-sectarian striving to be of help to the entire community. That this attitude has been appreciated is evidenced by the great variety of religious groups represented in its student body. It has always had an influence far beyond the limits of its own church.

For thirty-seven years Dr. Black served the college in a distinguished way. In 1926 Samuel R. Braden, Ph.D. became acting President for one year until the election of George H. Mack, D.D. Dr. Mack remained in office eleven years. During these years the college modernized its curriculum, and the student body increased in numbers. In the year 1937-38 the total attendance was 344. Thomas W. Bibb, Ph.D. of Albany College, Oregon became President in 1938 and served until 1943 when Rev. George P. Baity, D.D., President of the Board of Trustees, assumed direction of the college until a president could be secured. J. Ray Cable, Ph.D. of Washington University became President in February, 1944.

During the fifty-five years of its educational work Missouri Valley College has had many distinguished teachers and has been of great service to its community and state. A study of the file of its catalogues reveals a forward looking curriculum constantly being adjusted to the needs of the time. Through the years it has maintained a reputation for high standards and educational integrity. It faces the present critical period of our national life prepared to do its part in tomorrow's world.

LOCATION

The College is located at Marshall, Missouri, county seat of Saline County. It is a prosperous community with good schools and churches, and comfortable homes, surrounded by some of Missouri's richest agricultural lands. It is eighty miles east of Kansas City on the main line of the Alton Railroad. It is also reached by the Missouri Pacific Railroad and by a network of paved highways.

Health conditions are excellent. Water is drawn from deep wells. A successful municipal lighting plant provides unusually satisfactory service.

THE CAMPUS

The forty acre campus comprising the original gift lies in the southeast section of Marshall on a rise of ground sloping away gently in all directions. In the early years many varieties of shrubs and trees were planted. These are now in their prime. The campus is beautifully wooded, and is one of the most attractive in the state. Walks and driveways are well lighted and lawns well kept. Visitors are always welcome.

ACCREDITMENT

Missouri Valley College since 1916 has been approved by the North Central Association of Colleges and Secondary Schools, the regional accrediting agency of this area. Courses completed here are accepted without discount by other colleges and universities, and graduates of the College in general may expect admission to full graduate standing in standard universities on the usual terms. Three members of the Class of 1944 received scholarships or research awards from universities of high standing.

The College is a member of The American Council on Education, The Association of American Colleges, The Missouri College Union and the

Presbyterian College Union. Education courses are approved by the Missouri State Department of Education. Courses in Economics and Business Administration are approved on the same basis as other liberal arts subjects through the North Central accreditation. The Department of Religion meets the requirements of The Board of Christian Education of the Presbyterian Church in the United States of America.

CHURCH RELATIONS

Missouri Valley College is controlled by the Synod of Missouri of the Presbyterian Church in the United States of America. Trustees are confirmed by the Synod, after nomination by the board. Regular reports are made to both the Synod and to the Board of Christian Education. The trustees have adopted the educational and religious standards of the Church. The College has been liberal and non-sectarian. The student body represents a great variety of religious groups, and the college always has had an influence beyond the boundaries of its own church.

DEPARTMENTAL ORGANIZATION

For purposes of effective administration, the work of the college has been divided into seven divisions. Although courses are still listed by departments, the divisional organization serves to emphasize broad integrations of subject matter.

- I. Division of Language and Literature
 1. Department of Classical Languages and Literature
 2. Department of English Language and Literature
 3. Department of Modern Languages and Literature
 4. Department of Speech
- II. Division of Philosophy, Religion and Education
 1. Department of Philosophy
 2. Department of Religion
 3. Department of Education and Psychology
- III. Division of Social Science
 1. Department of History
 2. Department of Political Science
 3. Department of Sociology
- IV. Division of Economics and Business Administration
 1. Department of Economics and Business Administration
 2. Department of Secretarial Training and Commercial Education
- V. Division of Science
 1. Department of Biology
 2. Department of Chemistry
 3. Department of Geology
 4. Department of Home Economics
 5. Department of Mathematics and Astronomy
 6. Department of Physics and Engineering

VI. Division of Physical Education

1. Department of Physical Education for Men
2. Department of Physical Education for Women

VII. Division of Music and Art

1. Department of Music
2. Department of Art

The College confers four degrees: Bachelor of Arts, Bachelor of Science in Education, Bachelor of Science in Business Administration, and Bachelor of Music.

The teaching staff numbers thirty and the student population totals two hundred and five.

Fraternity Conditions at the College

At the present time on the Missouri Valley College Campus, we have one fraternity with national affiliation, the Beta Gamma Chapter of the Sigma Nu; two local women's sororities, the Sigma Phi and the Valkyrs; and the local Alpha Delta Kappa fraternity which is making out this petition.

Each of the women's organizations is making contacts and plans necessary to taking up some national affiliation within the next year.

The above social organizations on the campus have been kept in close contact with the faculty and administration through advisers selected from the faculty by the organization itself. Such selection was subject to the approval of the administration of the college.

The Social Committee of the Faculty, working with the representatives of the fraternities through the Dean of Women's Office, has drawn up certain regulations in regard to rushing, pledging, and initiation which are followed by each of the organizations. The fraternities, as well as any organization on the campus, which may wish to have a social program, must conform to the regulations of the college campus as administered by the Student and Faculty Social Committees. The Student Social Committee is under direct supervision of the Student Senate on the campus. I am attaching to this statement a copy of the regulations of the college governing the fraternities and their procedure in regard to rush week. Changes in these rules are made after due consultation by the representatives of the organizations, on what might be termed a Pan-Hellenic Committee, and the Faculty Social Committee.

Each social organization rents and furnishes a room on the campus which is used by the organization as a chapter room for meetings, or other gatherings sponsored by that particular group.

STUDENT ORGANIZATIONS

- a. The student government organization with a student president and senate limited only by rulings of the faculty and the Board of Trustees.
- b. The Women's Student Government Association, an organization that governs the resident women students limited by rulings of the Faculty and Board of Trustees.
- c. Student dormitory organizations with a house council in each house.
- d. Student Union organization whose purpose is to organize and manage a student union on the campus.
- e. Women's Athletic Association, an organization for the promotion of athletics among women.
- f. Dramatic Arts Club, open to all those who are interested in dramatic production.
- g. Science Club, composed of students and faculty interested in sciences.
- h. Beta, Beta, Beta, national honorary biological fraternity.
- i. Alpha Psi Omega, national dramatic society.
- j. Pi Kappa Delta, national honorary forensic fraternity.
- k. Beta Gamma Phi. local honorary scholastic fraternity.
- l. Pi Gamma Mu, national social science honorary fraternity.
- m. Alpha Delta Kappa, men's local social fraternity.
- n. Sigma Nu, men's national social fraternity.
- o. Sigma Phi, women's local social sorority.
- p. Valkyr, women's local social sorority.
- q. Chi Alpha Omega, local ministerial fraternity.
- r. Young Women's Christian Association.
- s. Choir, Women's voices.
- t. Band, Navy men.

The following organizations, although inactive at the present time, will be restored as soon as personnel is built up by return from war time basis.

- u. Chi Sigma Omicron, music society composed of men and women receiving music awards.
- v. Band and Orchestra.
- w. "V" or Varsity Club open to men who letter in athletics.
- x. Young Men's Christian Association.
- y. Vesper and A capella choirs.

February 8, 1944

REGULATIONS FOR SOCIAL ORGANIZATIONS ON THE CAMPUS

The following rules and regulations drawn up by the Social Committee of the Faculty of Missouri Valley College, and adopted by the Faculty, shall, with such changes as from time to time may be made by the two bodies in accordance with Parliamentary Procedure, be guides for the conduct of social organizations on the Missouri Valley Campus.

- I. Meetings shall be held on Monday evening; such meetings are not to be called before 6:45 p.m., nor are to be continued beyond 8:00 p.m. Special meetings may continue later than 8:00 p.m., or may be called at another time if approved by the Dean of Women. The President of each group is responsible for the orderliness of the meeting rooms and of the safe-guarding of such properties as the organization may use.

II. Sponsorship

A. Choosing:

Sponsors for social organizations on the campus shall be chosen in the following manner:

1. The groups shall nominate a candidate without knowledge of the candidate, whose name shall be submitted for approval to the Faculty Committee on Social Life.
2. Following approval by the Committee, the President of the College shall meet with the nominee to secure consent of the individual and to explain the responsibilities of said sponsor.

B. Term

It is understood that sponsors are not to be chosen for a definite period, but that each is to continue in office indefinitely, unless for some reason it is advisable for the individual to withdraw from said sponsorship.

III. Membership

A. Definition

The membership of an organization in any one year, shall include such initiated members as are registered in College, but the total of such initiated members plus pledges enrolled in the group, at any time shall not exceed 25 for women and 30 for men.

- B. A student registered in College, but carrying less than 12 semester hours may continue in membership of an organization and hold office therein if such procedure does not violate the membership rules of the organization.

IV. Rushing

- A. The time for the formal rushing by the organization shall be fixed by the Dean of Women in consultation with the sponsors and the presidents of the social groups.

- B. The regulations governing the formal rushing for the sororities shall be as follows:

1. The period for rushing will be from ____ to ____ inclusive.
(This period should be after the four weeks examination period.)

2. Men shall not be used in rushing, nor shall they attend any rush parties.
3. Rush Week is to be inaugurated by a joint tea, held by the women's organizations with all women enrolled in the college invited to attend.
4. Each women's organization is to be permitted to have three parties during Rush Week: Two minor parties and a formal dinner.
5. A rush party is composed of a group of active members of one sorority plus non-sorority and honored guests.
6. A list of events shall be registered in the Office of the Dean of Women preceding the beginning of Rush Week.
7. After rushing is completed an itemized list of expenditures for each party is to be filed in the Office of the Dean of Women.
8. The maximum amount to be spent shall be fixed by the Social Committee conferring with the sorority leaders, subject to the Faculty approval.
- C. Provision shall be made for the instruction of the Rushees in financial and business matters for the organizations.
- D. It is permissible to write letters to prospective students explaining the merits of the college in the name of the organization, provided such letters have been submitted in advance and received the approval of the respective sponsor of the organization or of the Dean of Women of the College.

V. Pledging

- A. No student shall be pledged who is not carrying at least 12 semester hours work.
- B. No student may continue as a pledge in a fraternity or sorority who has twice failed to make his grades. Such a student may be re-pledged if the organization wishes after he has made a "C" average for a semester's work of at least 12 semester hours.

NOTE: For the duration to be consistent with the term of pledging prior to initiation the above paragraph for the men's organizations shall substitute "8 weeks" instead of the word "semester."

- C. Preferential bidding is to be used by sororities in accordance with the following regulations:
 1. The time for bidding including invitational lists, rushees' preferential slips, the silent period, the delivery of invitations, and the acceptance or rejection shall be fixed by the Dean of Women in consultation with the sponsors and presidents of the social organizations in accordance with the following regulations:
 - (a) The invitational lists shall include first and second choice material. Second choice is to be listed in the order of preference.
 - (b) The silent period means that period during which there shall be no discussion of organization matters between members and rushees. Violations of this will be considered in each individual case by the Social Committee of the Faculty.
 - (c) An oral invitation must never precede a written one.
 - (d) After the invitational lists and the preferential bids have been matched by the Dean of Women, representatives

- from the organizations, will come to the Office of the Dean of Women to prepare the invitations.
- (e) The invitations will be delivered by the Dean of Women.
 - (f) The formal pledging service in the organization will probably be held at the regular meeting time on Monday following the acceptance.
- D. Rushing for the men's organizations shall be governed by the following procedure.
- 1. The time for the open rush period, the formal rush period, including dates for banquets, the designation of the silent period, the procedure of listing rushees who are to be initiated into membership, the setting of a time for the delivery of invitations by the joint fraternities, and the designation of the time of acceptance by the rushee to the Chairman of the Social Committee, shall be fixed by the Dean of Women as Chairman of the Social Committee in consultation with the sponsors of the men's organizations and the presidents of the organizations.
 - 2. Invitations for pledgeship by the fraternities shall be delivered in writing in the form of formal notes. They shall include the date and the name of the individual to whom the acceptance or rejection is to be made.
 - 3. During the open period, the president of each fraternity shall, within twenty-four hours after pledging, turn in the name of the individual who has been pledged to the Chairman of the Social Committee at which time the other social organizations shall be notified of such pledgeship.
- E. Students who meet the requirements may be pledged during the time designated at the open period. Invitations for pledging in case of women's organizations shall be delivered through the Dean of Women's Office. Names of those pledged to fraternities shall be turned in by the President of the Fraternity to the Dean of Women's Office immediately following acceptance.

VI. Initiation

- A. A pledge may be initiated during his term in residence immediately following the one in which he becomes eligible for membership.
- B. A student to be initiated must be carrying at least 12 semester hours of work.
- C. He shall have made at least one honor point for each hour for which he was enrolled the semester in which he became eligible for membership.
- D. A student being initiated must have his record verified by the Registrar at least two days prior to initiation.
- E. Both pledging and initiation of a last semester senior may be completed in the one semester upon approval by the Social Committee of the Faculty.
- F. For the duration of the war, the men's social organizations will be permitted to initiate candidates at mid-semester following their enrollment in college, providing their scholarship is satisfactory at that time. We define "satisfactory" to mean that the student must be carrying at least 12 semester hours work and must be making a "C" average in the work he is carrying.

HISTORY OF ALPHA DELTA KAPPA

The present ALPHA DELTA KAPPA FRATERNITY is the direct descendant of the TRI "C" CLUB. The Tri "c" Club was a pioneer among the social clubs as it was the first club of its kind to be organized on the campus of Missouri Valley College. This organization began in the fall of 1927. The sponsors of the Club were Dr. Pettyjohn and Coach Godfriaux

The first president of the Tri "C" Club was R. W. Campbell, Jr., of Marshall. Following is a list of the Charter members of the Club:

William Sterrett	William Stoll	J. W. Scott
George Fisher	Chas. Fisher, Jr.	Emerson Higdon
R. W. Campbell	Tom Carter	Eugene Moore
Phillip Smith	Joe Price Frerking	Ralph Yancey
Mark Holecomb	Kenneth Conrad	Arthur Krieckhaus
Noel Ferguson	Edwin Brown	W. R. Lamar

The ALPHA DELTA KAPPA (Tri C) has always been composed of a group of young men banded together for the purpose of promoting a better social life among the students. Meetings are held every week.

Officers are: Grand Chancellor---Emerson T. Cannon
Altar Guard-----William Philipsen
Worthy Chaplain----Joe Hazdra
Chancellor of the
Council-----John McCormack
Chancellor of the
Seal-----Kenneth Barry
Honor Guard-----Francis E. Barenbrugge
Pledge Master-----William E. Korbitz
Reporter-----Allen Kauffman

FINANCIAL STATEMENT

ALPHA DELTA KAPPA FRATERNITY

April 17, 1945

The financial condition of the Alpha Delta Kappa Fraternity is kept on a sound basis by the requirements of the members to meet their obligations to the fraternity. The organization has no debts of any nature at the present time. The budget of the club includes all social affairs and incidental expenses. This money is budgeted at the beginning of each year and the dues set accordingly.

No fraternity or club at Missouri Valley College at the present time has a chapter house. The college authorities have indicated their willingness to support the construction of lodges. Alpha Delta Kappa is looking forward in its financial plan to this end.

If our petition is approved and we become the holders of a national charter of Alpha Sigma Phi, we will alter our dues and assessments to meet the demands of Alpha Sigma Phi so that we may have all the funds necessary for entrance into the fraternity and for maintenance in such a manner that will be creditable to the Alpha Sigma Phi Fraternity.

GEOGRAPHICAL DISTRIBUTION OF STUDENT BODY

Missouri Valley College

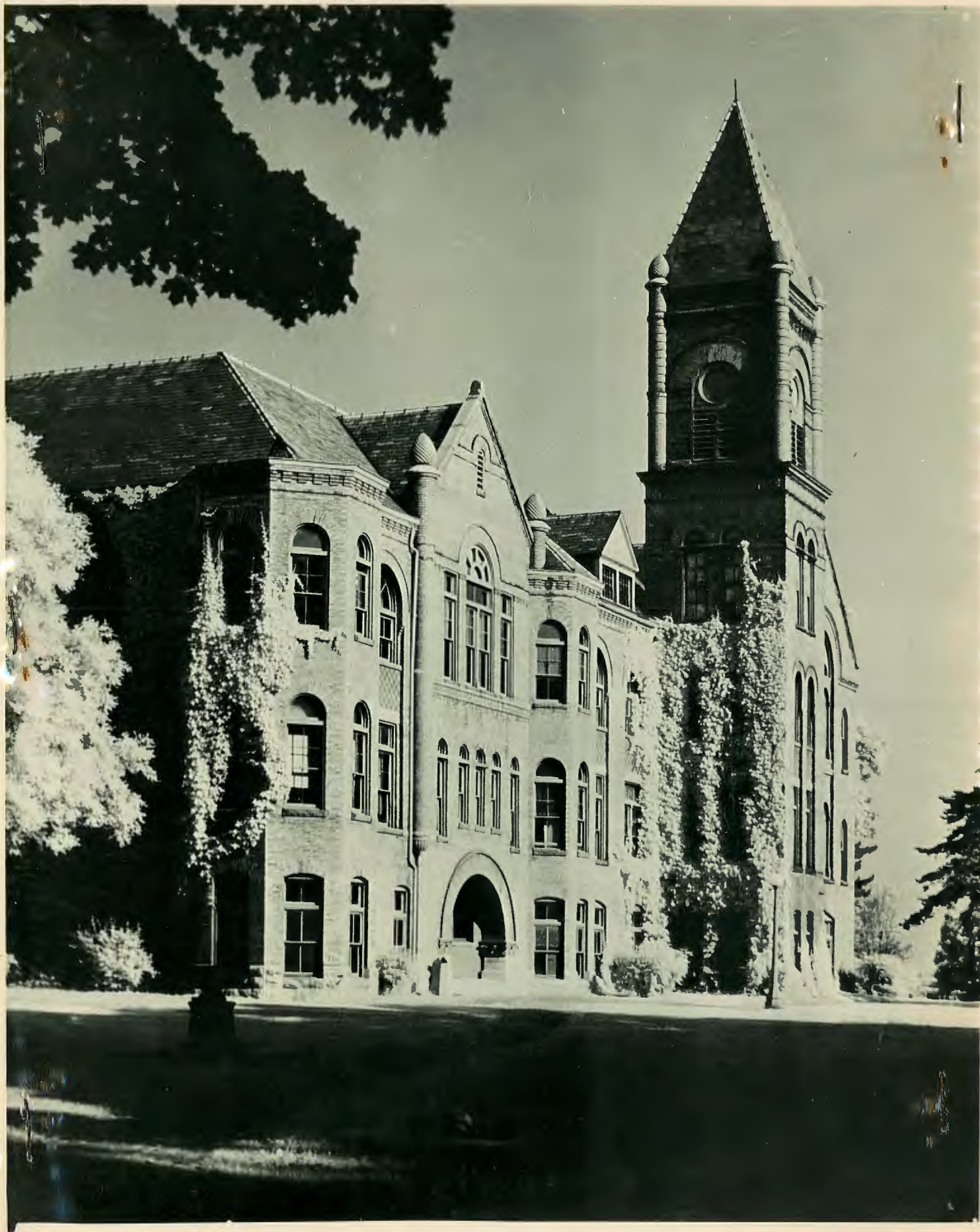
Geographical distribution of residence of students enrolled in
Missouri Valley College November 1, 1944 - March 1, 1945.

Arkansas	2
California	3
Colorado	1
Delaware	1
Illinois	91
Indiana	8
Iowa	2
Kansas	6
Kentucky	1
Massachusetts	3
Michigan	1
Minnesota	3
Missouri	129
Nebraska	8
New Hampshire	1
New Jersey	1
Ohio	2
Pennsylvania	21
Rhode Island	1
Utah	1
Virginia	1
Washington	1
Wisconsin	4









SCHOLASTIC STANDING OF EACH PETITIONER

March 1, 1945

ALLIN, Thomas G., Jr.	2.61 *
ANDRUS, Jack F.	2.11
BARENBRUGGE, Francis E.	1.76
BARRY, Kenneth S.90
BATES, Charles I., Jr.	1.64
BROWNING, Robert L.	2.83
CANNON, Emerson T.	2.26
GUTHRIE, Harvey H., Jr.	2.09
HARRIS, Herbert E., II	1.29
HAZDRA, Joseph B.	1.29
KAUFFMAN, Allen P.	1.47
KORBITZ, William E.	2.23
KRAATZ, Rod	1.16
LOVE, Kenneth R.	1.58
MC CORMACK, John S.	1.29
MC NULTY, Gerald	1.11
NISELY, James M.	1.70
NORTHCLIFFE, Lee C., Jr.	2.11
PHILIPSEN, William R.	2.64
ROBERTSON, Van M.	1.23
SCHMIDLE, William A.	1.00
SHULAW, Walter A.	1.58
WIEGERS, Alfred O.	1.47

* A gives 3 honor points; B gives 2 honor points; C gives 1 honor point;
D and below gives 0 honor points.

Scholastic standing of fraternities on Missouri Valley Campus
November 1, 1944 - March 1, 1945

Alpha Delta Kappa	.	.	1.71
Sigma Nu	.	.	1.60

ALUMNI MEMBERS OF ALPHA DELTA KAPPA FRATERNITY

Arndt, Clarence - 361 West Boyd, Marshall, Missouri - A.B. 1936 - In Service ✓ 9-13-45
 Barnhill, Paul - 874 South Odell, Marshall, Missouri - In Service - Lieut.
 Barnett, Henry - 1195 East 77th Street, Kansas City, Missouri - Minister
 Bell, M. P., Jr. - R.F.D. #4, Marshall, Missouri - B.A. 1932
 Berning, Orville Glenn - R.F.D., Carrollton, Missouri - In Service - Lieut.
 Berry, James - Bentonville, Arkansas
 Billings, John - La Plata, Missouri - A.B. 1934 - Teacher
 Boyd, James - Knob Noster, Missouri - A.B. 1941 - In Service - Ensign
 Brummitt, Joe - c/o Mrs. J. C. Patterson, Moberly, Missouri - In Service -
 Lt. - j.g.
 Buck, John Roger - 911 Walnut, Kansas City 6, Missouri
 Bush, Donald - Ridgeway, Missouri
 Caldwell, Maurice Mack - 531 Molino, Long Beach, California - A.B. 1945 -
 Ministerial Student, Drew Seminary, New York
 Carnahan, Melvin H. - 118 S. Glendale - Wichita, Kansas - A. B. 1938 - In
 Service
 Carter, A. Laten - Ross, Ohio - Minister
 Carter, Joseph - 525 North Brunswick, Marshall, Missouri - In Service
 Casey, Joe P. - 2221 Penn, Joplin, Missouri - Navy V-12 student
 Chenot, David Walter - 1530 Walnutway, Long Beach, California - Navy V-12
 student
 Cline, Caryll - Appleton City, Missouri - In Service
 Collins, Robert Kenneth - 1503 Foliage Street, Pittsburg 21, Pennsylvania -
 Navy V-12 student
 Comaschi, Louis - 12 West 73rd Terrace, Kansas City 5, Missouri - Ph.B. 1934 -
 Chemist
 Cook, Homer Elms - Edina, Missouri - In Service - Lieut. - (M.D.)
 Cox, Jack - Miami, Missouri - A.B. 1938 - In Service
 Crockett, James Jewel - Route #3, Liberty, Missouri - In Service
 Cutler, Don Earl - Blue Springs, Missouri
 Davis, Durwood - 318 E. Vest, Marshall, Missouri
 Duncan, Ralph H. - 8902 Roberts, Kansas City, Missouri
 Deditius, Francis Vermillion - Asst. to pastor - St. Louis Missouri -
 A. B. 1942 - Minister
 DePew, Robert Louis - 409 E. Indiana Avenue, Elkhart, Indiana - Navy V-12
 student
 Dexter, David - 4119 Windsor, Kansas City, Missouri
 Dexter, Richard - 4119 Windsor, Kansas City, Missouri
 Digges, Hayden H. - Glasgow, Missouri - In Service
 Dougherty, J. Raymond - Vandalia, Missouri - A.B. 1933 - Dr. - Osteopath
 Downing, Walter - Leeton, Missouri
 Doyle, Dean - 2612 W. Morse, Chicago, Illinois - In Service
 Duggins, Ralph - R.F.D. #2, Marshall, Missouri - In Service
 Duncan, Bernie - Puxico, Missouri - Navy V-12 student
 Dye, Martin - #1, Marshall, Missouri - In Service
 Edmonds, A. Hamner - Miami, Missouri - In Service - A.B. 1935 - Navy
 Edwards, Gene - Boomer, Missouri
 Ewell, Charles W. - 6148 Morganford, St. Louis, Missouri - A.B. 1938 -
 In business.

Alumni Members of Alpha Delta Kappa Fraternity

Faitos, Ernest - 180 Beach, Santa Cruz, California - Navy V-12 Student
 Freeman, Richard - Carrollton, Missouri - In Service - Major in Army
 Francis, Cecil - Alma, Missouri
 Fullerton, Eugene - Carthage, Missouri - In Service
 Gaunt, Robert - c/o 427 $\frac{1}{2}$ W. 34th St., Terrace, Kansas City, Missouri
 Gerhardt, Malcom E. - 2827 Denver, Kansas City, Missouri - In Service
 Gillespie, M. LeRoy - Chula, Missouri - In Service
 Glenn, Spencer - Brookfield, Missouri - In Service
 Goshom, Meredith Bruce - Alton, Kansas - In Service - Private
 Green, William Glenwood - Armstrong, Missouri - A.B. 1939
 Griffiths, Chas. - 415 E. 74th, Kansas City, Missouri
 Guthrey, Kile P. - 2113 N. 25th, East St. Louis, Illinois - Salesman
 A.B. 1938
 Hall, Bert - 5031 Baltimore, Kansas City, Missouri - In Service - Private
 Hall, Thomas M. - Glasgow, Missouri
 Hansen, Louis - Sin-a-bar Road, Kansas City, Missouri - A.B. 1937 - In Service
 Hansford, George - Sarcoxie, Missouri
 Harbold, Ray Emmett - 703 W. 165 Pl., Gardena, California - Navy V-12 Student
 Harrold, William - Richland, Missouri - In Service
 Harvey, Hudnall - c/o Bouldun, Hughesville, Missouri - A.B. 1938 - In Service
 Chaplain
 Heam, Jack Preston - Sweet Springs, Missouri - In Service - Sergeant
 Heath, Willard Ray - c/o Mr. Perry Storts, Marshall, Missouri - B.S. 1942 -
 In Service - Navy
 Humphreys, Noah - c/o Rose Buckner, Marshall, Missouri - In Service - Army
 Hupp, Wilbur, Jr. - 104 N. Brunswick - Marshall, Missouri - In Service
 Jackson, A. B. - c/o Station KVOO, Tulsa, Oklahoma - Announcer
 Jensen, Eugene Theodore - Lexington, Missouri - A.B. 1939 - In Service - Lieut. ✓ 9-13-45
 Jessee, Randall - Excelsior Springs, Missouri - In Service
 Johns, John Robert - 360 S. Odell, Marshall, Missouri - In Service
 Johnson, Richard M. - 7224 Highland, Kansas City, Missouri
 Jones, Albert LeRoy - c/o Mrs. A. L. Jones, Hamilton, Missouri - A.B. 1937 -
 In Service - Lieut.
 Jones, Ralph - 5616 Enright Avenue - A.B. 1943 - In Service
 Keifer, Amwood - 3433 Arlington Street, St. Louis, Missouri - In Service -
 A/C Navy
 Kelley, Ray - Knob Noster, Missouri
 Kimutis, John - 1618 N. 23rd Street, East St. Louis, Illinois
 Kirby, Wm. Roland - Slater, Missouri
 Laitner, Humphrey Louis - Route 3 Carrollton, Missouri - In Service - Navy
 Lee, Richard S. - Ludlow, Missouri - In Service
 Lentz, J. W. - c/o 4418 Millcreek, Kansas City, Missouri - Salesman
 Lewis, Richard Eldon - 1080 Elm, Long Beach, California - Navy V-12 Student
 Likowski, James Boyd - 1761 E. First Street, Long Beach 3, California - Navy
 V-12 Student
 Llewellyn, J. - Brookfield, Missouri
 Lober, Don - Liberty, Missouri - In Service - Lieut. - Prisoner of War
 Long Raymond H. - Armstrong, Missouri - Ph.B. 1933
 Long, Russell Anderson - 700 S. Douglas, Lee Summit, Missouri - In Service -
 Navy - Annapolis
 Luder, Robert Jacob - 1437 E. 75th Terrace, Kansas City, Missouri

Alumni Members of Alpha Delta Kappa Fraternity

Markland, Everette - 803 Webster Court, St. Louis 19, Missouri
Martin, James - Odessa, Missouri - B.S. 1943 - In Service - Navy
Marshall, Arch - Longwood, Missouri
McAdow, Louis - Mexico, Missouri - Minister Christian Church - A.B. 1937
McBride, Bion A. - 2007 Woodland, Wichita, Kansas - Navy V-12 Student
McChesney, Jack - 791 E. Eastwood, Marshall, Missouri
McColum, Orville - Malta Bend, Missouri - c/o Ballew - In Service
McCoy, Jay Hamilton - Texas Military Institute, San Antonio, Texas - former sponsor - Teacher
McKelvey, Justin - c/o 2nd Presbyterian Church, 55th & Oak Street - Kansas City, Missouri
Miller, John F. - Higginsville, Missouri - In Service - Navy
Mills, William Webster - 2136 Spaulding Street, Long Beach, California - Navy V-12 Student
Milstead, John - West Plains, Missouri
Moore, John George - Formerly of Marshall, Missouri - deceased
Mueller, Byron S. - c/o Evans 1412 S. Garrison, Carthage, Missouri - A.B. 1939 In Service
Murray, Roy - 3046 Huntington, Omaha, Nebraska - A.B. 1933 - Minister
Myers, Overly - Kansas City, Missouri - In Service
Neidermeyer, Edward - 2706 Clifton Avenue, St. Louis, Missouri - A.B. 1941 - In Service - Private
Newhouse, John S. - 305 N. Union, Independence, Missouri
Offutt, Bradley - 2753 - 4th Avenue, S., Minneapolis, Minnesota
Orear, Cecil - 1076 S. Brunswick - Marshall, Missouri
Orear, John - 5627 Highland - Kansas City 4, Missouri - In Service
Pelot, Frank L. - 225 S. Redman, Marshall, Missouri - In Service
Penninger, Ralph S. - Mountain View, Missouri
Pettit, Charles - 3316 Bales, Kansas City, Missouri - In Service
Petzold, Theodore J. - 256 Atlantic Avenue - Long Beach, California - Navy V-12 Student
Pile, William E. - Macon, Missouri - B.S. 1943 - In Service
Poland, Richard Gentry - 224 S. Chestnut - Cameron, Missouri - Navy V-12 Student
Poppewell, Conreux Thomas - Hudson Road, Ferguson, Missouri
Price, Robert - Box 44 Logan County - Beason, Illinois - A.B. 1944 - Teacher
Raines, John - c/o Herrick - Ithaca, New York - Former sponsor - (Dr.) - In Service
Rearick, Frank S. - Rolla, Missouri - Minister
Reidenbach, W. Eugene - Slater, Missouri - A.B. 1938
Rieth, Earl - Marceline, Missouri - In Service
Ritchey, Uriah Edward - Cameron, Missouri - B.S. 1940 - In Service
Ross, John Franklin - 112 Case Street - Michigan City, Indiana - In Service
Rumans, Leon - 217 N. Odell - Marshall, Missouri - A.B. 1933 - In Service
Russell, Noland - 400 West 61st Terrace, Kansas City, Missouri - In Service
Schrader, Charles - Sweet Springs, Missouri
Sill, James D. - Lexington, Missouri - A.B. 1940 - Captain (Chaplain)
Skidmore, Hubert - 461 W. Summitt, Marshall, Missouri - In Service - PM 2/c
Smith, Earl Henry - 457 West Summitt, Marshall, Missouri
Smith, Carl Louis - West Plains, Missouri - B.S. 1941 - In Service - Captain
Soper, Allen B. - R.F.D. - Slater, Missouri - In Service - Navy
Spanbauer, Henry W. - Pleasantville, Missouri - B.S. 1942 - In Service - Navy

Alumni Members of Alpha Delta Kappa Fraternity

Sparks, Charles - 907 Colquitt Street, Houston, Texas - A.B. 1934
Stanfield, Summers - c/o Phillips Tavern, Excelsior Springs, Missouri -
B.A. 1932
Steele, Wesley - Sedalia, Missouri
Sullivan, Raymond Sidney - Miami, Missouri - A.B. 1937 - In Service
Summerville, Charles - 94 Fremont Street, Harrison, New York - In Service -
Ensign in Navy
Swaney, Harvey Donald - Smithville, Missouri - In Service - Ensign in Navy
Tedlock, Robert M. - Bethany, Missouri - A.B. 1940 - In Service
Thompson, Robert - Newcastle, Wyoming - In Service
Toomay, Raymond, Praymer, Missouri
Trent, Charles - 4307 Mayberry, Omaha, Nebraska - In Service - Lieut - Marine
Air Craft
Van der Maaten, Robert - 809 Grand Avenue, Springfield, Missouri - A.B. 1937 -
In Service - Lieut.
Walters, Dewaine - Archie, Missouri
Ward, Eldon Leon, - Carrollton, Missouri
Weston, Joe - 403 W. Hickory, Neosho, Missouri - In Service - Lieut.
Wilcox, Clifton - 1508 E. Jackson, Bloomington, Illinois - B.A. 1932
Williams, Jack Francis - 300 Dlane Street, Burlington, Iowa - Navy V-12 Student
Williams, James A. - Norborne, Missouri - In Service - Teacher - Sergeant
Williams, James Ellsworth - 221 Katherine Avenue, Salinas, California - Navy
V-12 Student
Wilson, Clarence, J. - 344 Jenkins, Slater, Missouri
Windsor, George - Windsor, Missouri - B.S. 1932 - Dr. (Osteopath)
Woodsmall, James - Memphis, Missouri - A.B. 1936



MISSOURI VALLEY COLLEGE
MARSHALL, MISSOURI

OFFICE OF THE PRESIDENT

February 16, 1945

Mr. George E. Worthington
Chairman of Extension
1636 44th St., N.W.
Washington, D. C.

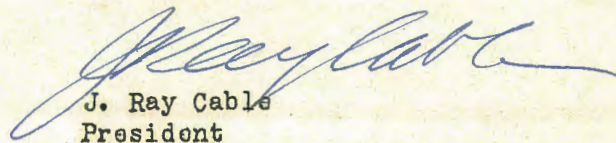
Dear Mr. Worthington:

As President of Missouri Valley College I want to support the application of Alpha Delta Kappa for a charter of Alpha Sigma Phi.

Alpha Delta Kappa is a serious group of students who are willing to meet serious fraternity standards. They represent a good cross section of the men of the college. They have a responsible and cooperative faculty sponsor.

It is the policy of the Board of Trustees to encourage local organizations to secure national charters. I can assure you that the administration stands ready to assist in every legitimate way in the development of a sound fraternity system at this college. In my judgment the local chapter of Alpha Delta Kappa merits the confidence of both the college and the officials of Alpha Sigma Phi.

Sincerely,


J. Ray Cable
President

JRC:DD

March 10, 1945.

Dr. W. H. Cramblet,
National President, Alpha Sigma Phi Fraternity,
Bethany, West Virginia.

My dear Dr. Cramblet:

I understand that Alpha Delta Kappa, a local group at Missouri Valley College, Marshall, Missouri, is petitioning your Fraternity for a charter.

I have known this group since the late '20s. They have maintained a continued organization and have always enjoyed a good reputation on the campus. For several years I knew personally a number of the members - boys of excellent reputation from good families. Dr. Charles W. Gehrke, the sponsor of the group, is at the head of the Chemical Department of Missouri Valley College, and is one of the strongest members of the faculty.

I can recommend the group, without reservation, as being a desirable one for a national fraternity. I sincerely trust that favorable consideration will be given to their petition.

Very truly yours,

John M. Roberts
vj.

John M. Roberts, Grand
Treasurer and Past Regent
of Sigma Nu Fraternity.
Member, Board of Trustees,
Missouri Valley College.

MISSOURI VALLEY COLLEGE
MARSHALL, MISSOURI

OFFICE OF DEAN OF WOMEN

March 13, 1945

Mr. George E. Worthington
Chairman of Extension
1636 44th St., N. W.
Washington, D. C.

Dear Mr. Worthington:

Since coming to Missouri Valley College in September, 1941, I have come to know the Alpha Delta Kappa fraternity well. I have found that the members of this organization, directed by able sponsors, are always willing to take their part in developing the social program of the college.

The members have exerted an influence for good, academically and socially. We feel that the organization has taken a definite part in developing student activities and student loyalty to the College as well as developing its own membership.

Sincerely yours,


(Miss) Melva Rae Gingerich,
Dean of Women

MRG:P

February 17, 1945

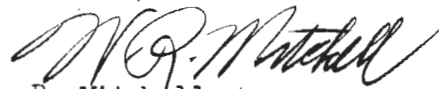
Mr. George W. Worthington
Chairman of Extension
1636-44th Street, N.W.
Washington, D. C.

My dear Mr. Worthington:

I have been asked to make endorsement of the application of the local fraternity, Alpha Delta Kappa, under the rules and regulations for affiliation with Alpha Sigma Phi.

I am glad to do this, especially since I have been connected with Missouri Valley College since 1928 and have known in a general way of the work of the local fraternity. I have been acquainted with the sponsors of the group and through academic records have known of such activities and interests that have been carried on. I believe that the organization as a whole and the members as individuals are worthy of consideration by your organization and I gladly recommend them for affiliation.

Sincerely yours,



W. R. Mitchell
Dean

WRM:DD

February 17, 1945

Mr. George E. Worthington
Chairman of Extension
1636 44th St., N.W.
Washington, D. C.

Dear Mr. Worthington:

The Alpha Delta Kappa fraternity of Missouri Valley College is a group of young men of good morals and of good scholarship. The fraternity was organized in 1927 and since then has played its part on the campus and in civilian life. Its members are doing their bit in the armed forces and as dutiful citizens.

I endorse them heartily for a national organization and feel sure they will make a happy and competent unit in it.

Yours sincerely,

A handwritten signature in cursive script, reading "Wm. I. Ferguson".

Wm. I. Ferguson, Sponsor
Beta Gamma of Sigma Nu

WIF:DD

February 19, 1945

Mr. George E. Worthington
Chairman of Extension
1636-44th Street, N. W.
Washington, D. C.

Dear Mr. Worthington:

The Sigma Phi Sorority of Missouri Valley College
is happy to recommend the Alpha Delta Kappa Fraternity
to your consideration for membership in Alpha Sigma
Phi. The fraternity has maintained high standards
and shown a fine spirit of cooperation on our campus.

Yours very sincerely,

A handwritten signature in cursive script that reads "Grace Thomas".

Grace Thomas, Sponsor
Sigma Phi Sorority

GT:DD

March 31, 1945

Mr. George E. Worthington
Chairman of Extension
1636 44th Street, N. W.
Washington, D. C.

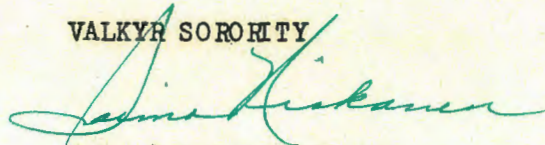
Dear Mr. Worthington:

The Alpha Delta Kappa Fraternity has always taken an active interest in campus activities of Missouri Valley College and have willingly cooperated with the Valkyr Sorority on all occasions.

The Fraternity consists of a fine group of fellows and we feel that they would make a very worth while contribution to any group with which they would be affiliated.

Thus, we, the Valkyr Sorority of Missouri Valley College, are taking this means of endorsing the membership of Alpha Delta Kappa to the Alpha Sigma Phi Fraternity.

VALKYR SORORITY



(Miss) Saima Niskanen
Sponsor

SN:vg

CLASS OF SERVICE

This is a full-rate Telegram or Cablegram unless its deferred character is indicated by a suitable symbol above or preceding the address.

WESTERN UNION

A. N. WILLIAMS
PRESIDENT

1220

SYMBOLS

DL = Day Letter

NL = Night Letter

LC = Deferred Cable

NLT = Cable Night Letter

Ship Radiogram

The filing time shown in the date line on telegrams and day letters is STANDARD TIME at point of origin. Time of receipt is STANDARD TIME at point of destination.

3658 NL COLLECT-LOSANGELES CALIF 14

ALPHA SIGMA PHI FRATERNITY

42 BROADWAY NYK

15 MAY 15 AM 1 39
BX

CONCERNING PROPOSED MISSOURI VALLEY COLLEGE CHAPTER I
SERIOUSLY QUESTION WHETHER NEW CHAPTERS SHOULD BE
ESTABLISHED ANYWHERE UNDER PRESENT CONDITIONS AND ALSO
WHETHER THIS INSTITUTION WOULD JUSTIFY CHAPTER AT ANY TIME
ACCORDINGLY I AM DISPOSED TO VOTE AGAINST GRANTING THIS
CHAPTER AT THIS TIME NEVERTHELESS AT THIS DISTANCE AND WITH

LIMITED INFORMATION I DO NOT WISH TO OPPOSE UNANIMOUS
DECISION OF ALL OTHER MEMBERS OF GRAND COUNCIL AND
THEREFORE IF ALL OTHER MEMBERS VOTE AFFIRMATIVELY PLEASE
COUNT ME AS VOTING AFFIRMATIVELY=

PAUL FUSSELL

SERVICE
This is a full-rate Telegram or Cablegram unless its deferred character is indicated by a suitable symbol above or preceding the address.

MAY
40 BROAD ST.
HANOVER 2/2920

WESTERN UNION

A. N. WILLIAMS
PRESIDENT

1201

SYMBOLS

DL=Day Letter
NL=Night Letter
LC=Deferred Cable
NLT=Cable Night Letter
Ship Radiogram

The filing time shown in the date line on telegrams and day letters is STANDARD TIME at point of origin. Time of receipt is STANDARD TIME at point of destination

GA 465 9 COLLECT=NEW WILMINGTON PENN 12 226 PM MAY 12 PM 2 49

ALPHA SIGMA PHI= 179A *chg*

42 BROADWAY NYKE

I APPROVE INSTALLATION OF CHAPTER AT MISSOURI VALLEY=

H M HART.

THE COMPANY WILL APPRECIATE SUGGESTIONS FROM ITS PATRONS CONCERNING ITS SERVICE

WESTERN
UNION

PA 5 11 51 MAY 12

1891
TIME RETURNED
REASON
MESSENGER No.

4 P
CERT
795

60 MAY 12 PM 2:56

CLASS OF SERVICE

This is a full-rate Telegram or Cablegram unless its deferred character is indicated by a suitable symbol above or preceding the address.

WESTERN UNION

1201

SYMBOLS

DL = Day Letter

NL = Night Letter

IC = Deferred Cablegram

NLT = Cable Night Letter

Ship Radiogram

A. N. WILLIAMS
RESIDENT

The following

SU51 ~~TX~~ COLLECT SER=WUX LOSANGELES CALIF 14 957A

Chg RALPH F BURNS ALPHA SIGMA PHI= *Chg*

42 BROADWAY NYK=

100A

DUPLICATE OF TELEPHONED TELEGRAM

APPROVAL HEREBY GRANTED FOR ALPHA SIGMA PHI CHARTER TO ALPHA DELTA KAPPA AT MISSOURI VALLEY COLLEGE=

WESLEY M HINE.

Bow 9-2744

TO

E I

TIME

130 PM

623

Deliver

THE COMPANY WILL APPRECIATE SUGGESTIONS FROM ITS PATRONS CONCERNING ITS SERVICE

TEL DEPT C B.
1945 MAY 14 PM 1 13

1945 MAY 18 PM

CLASS OF SERVICE

This is a full-rate Telegram or Cablegram unless its deferred character is indicated by a suitable symbol above or preceding the address.

BROAD ST.
VER 2/2920

18-4 extra

WESTERN UNION

A. N. WILLIAMS
PRESIDENT

1201

(32)

QX

SYMBOLS

DL = Day Letter
NL = Night Letter
LC = Deferred Cable
NLT = Cable Night Letter
Ship Radiogram

The filing time shown in the date line on telegrams and day letters is STANDARD TIME at point of origin. Time of receipt is STANDARD TIME at point of destination

CU192 14 COLLECT=CHICAGO ILL 18 1125A

1945 MAY 18 PM 12 35

ALPHA SIGMA PHI FRATERNITY=

42 BROADWAY NYK=103A DUPLICATE OF TELEPHONED TELEGRAM

REPLYING TO YOUR WIRE OF MAY 18 VOTE IN THE AFFIRMATIVE
ON MATTER=

BENJAMIN CLARKE.

18.

TO *E J*
623
1254 P
Delivered

THE COMPANY WILL APPRECIATE SUGGESTIONS FROM ITS PATRONS CONCERNING ITS SERVICE

3092744

WESTERN
UNION

1045
18
PM 12:58
PT C.D.

82 MAY 12 PM 12 32

1045

KELCO

4470000

Votes Received on AΔK-

Cramblet, W. H.

approval

Shotwell, E. B.

approval by phone
5-21-45

Hart, J. M.

approval 5-14-45

Fussell, P.

qualified approval 5-15-45

Clarke, B.

approval 5-18-45

Cochran, L. S.

approval 5-18-45

Neil, W. M.

approval 5-14-45

Washington, J. E.

approval 5-14-45

Young, B. F.

approval 5-17-45

BETHANY COLLEGE
BETHANY, W. VA.

OFFICE OF THE PRESIDENT

May 14, 1945

Dear Ralph,

I have received your letter requesting a vote on the petition of Missouri Valley College. I am voting favorably on the same. This has been gotten out in good shape. I had a wire from Lloyd Cochran about it yesterday which I answered this morning.

I should have told you that the person to contact in Missouri Valley would be either Professor Gehrke, the adviser of the group, or the present head of the organization who is a fine young man from Utah. His father for a number of years was organist in the Mormon Temple at Salt Lake City.

I do hope you can go out for the 2nd and 3rd of June. They will be closing up their work at Missouri Valley the week after the 17th of June and I think they would like to put on a social affair after they go national. I will be quite disappointed if their petition is not acted on favorably.

I am to be in Washington on Friday and will contact George at that time.

Yours,



Mr. Ralph F. Burns
Alpha Sigma Phi Fraternity
42 Broadway
New York, N. Y.

WHC:deb