

A P E T I T I O N  
to the  
A L P H A K A P P A P I F R A T E R N I T Y  
from  
A L P H A B E T A G A M M A S O C I E T Y  
of  
W O F F O R D C O L L E G E

Issued by the Fraternity  
April, 1940  
Spartanburg, South Carolina



## FORMAL PETITION

We, the undersigned, members of the Alpha Beta Gamma Society, a fraternal organization in Wofford College, conscious of the advantages of a national fraternity, do hereby respectfully petition the Grand Officers and Collegiate Chapters, of the Alpha Kappa Pi Fraternity, that a charter be granted us as a Chapter of the Alpha Kappa Pi Fraternity. Should our petition be granted we will thereupon recognize the Executive Council of the Alpha Kappa Pi Fraternity as our supreme legislative, executive and judicial authority. We agree to abide by and obey all the laws, ordinances, and ancient customs of your fraternity, and obligate ourselves to promote its welfare and best interests as becomes a worthy and acceptable Chapter of the Alpha Kappa Pi Fraternity.

For the ALPHA BETA GAMMA SOCIETY

J. O. Crosby, Jr., President

W. T. Lander, Jr., Vice-President

R. L. Dennis, Secretary

E. A. Bradley, Jr., Treasurer



WOFFORD COLLEGE  
(Founded 1854)





## HISTORY OF WOFFORD

Rev. Benjamin Wofford, a local minister of the Methodist Episcopal Church, South, died in the town of Spartanburg, S. C., December 2, 1850. He left in his will a legacy of one hundred thousand dollars to the South Carolina Conference "for the purpose of establishing and endowing a college for literary, classical, and scientific education, to be located in my native district, Spartanburg." One-half of the amount was to be laid aside as a permanent endowment.

A charter was given by the Legislature of South Carolina, December 6, 1851. Suitable buildings having been erected, a president and professors were elected November 24, 1853, and the College was opened August 1, 1854. Since that time it has never been suspended, though for a period during the Civil War it was not above the grade of a classical school. At the close of the war, college classes were again organized.

Measures were taken immediately after the opening of the College to add to the endowment, and they were meeting with a large and gratifying success when interrupted by the War Between the States, 1861-65. In the general wreckage of the war the endowment was swept away, leaving the College only its grounds and buildings. The South Carolina Conference, however, liberally made arrangements to meet the emergency, and by an annual assessment kept the College from closing its doors. This assessment has been increased from time to time as the needs of the College required, and has become a fixed source of income.

The College is located in the City of Spartanburg, a growing community of approximately 30,000 inhabitants, sixty-nine miles southeast of Asheville, N. C., with an altitude of nearly 1,000 feet above sea level, possessing an unusually healthful and bracing all-the-year-round climate and health conditions unsurpassed in the South. Spartanburg has also been long noted as a community with an exceptional social, intellectual, and religious atmosphere. Though a modern commercial city, it still retains the cultural advantages of a college community, offering from time to time opportunities for entertainment that make for the highest refinement—music by the best musicians and lectures by men and women of large achievement and world-wide reputation.

The College campus is a high, well-drained hill and consists of about sixty-five acres. It is a park of unusual natural beauty, and is amply shaded by noble trees of pine, oak, and elm. Few visitors to the Wofford campus ever forget the quiet charm of nature's contribution to what constitutes the "atmosphere" of the College.



Wofford today has an endowment of approximately eight hundred thousand dollars. The value of the buildings and equipment is placed at approximately seven hundred and fifty thousand dollars.

Wofford's undergraduate enrollment is usually around five hundred. Several graduate students are accepted annually. A summer session is operated and the college holds special classes for school teachers who live in and near Spartanburg.

The College is a member of the Association of American Colleges and Universities, the Southern Association of Colleges and Secondary Schools, the Southern University Conference; and it is on the approved list of the American Association of Universities.

The College grants the A. B., B. S., and M. A. degrees.

This winter the Executive Council of the PHI BETA KAPPA approved Wofford College for a chapter of that group and installation is expected during the next session.

Other honorary national fraternities at Wofford are: Blue Key, Scabbard and Blade, Beta Pi Theta, Delta Phi Alpha, Chi Beta Phi, International Relations Club, Pi Gamma Mu, and Sigma Upsilon.

Wofford has a volunteer R. O. T. C. Infantry Unit. Each year about two hundred boys take the basic course in Military Science and Tactics. Out of the Junior Military Class of about eighty members, twenty-five are chosen to take the Advanced Course in Military Science and Tactics. These boys of the advanced course go to R. O. T. C. Camp in the summer. Wofford boys have always made very creditable records while at camp.

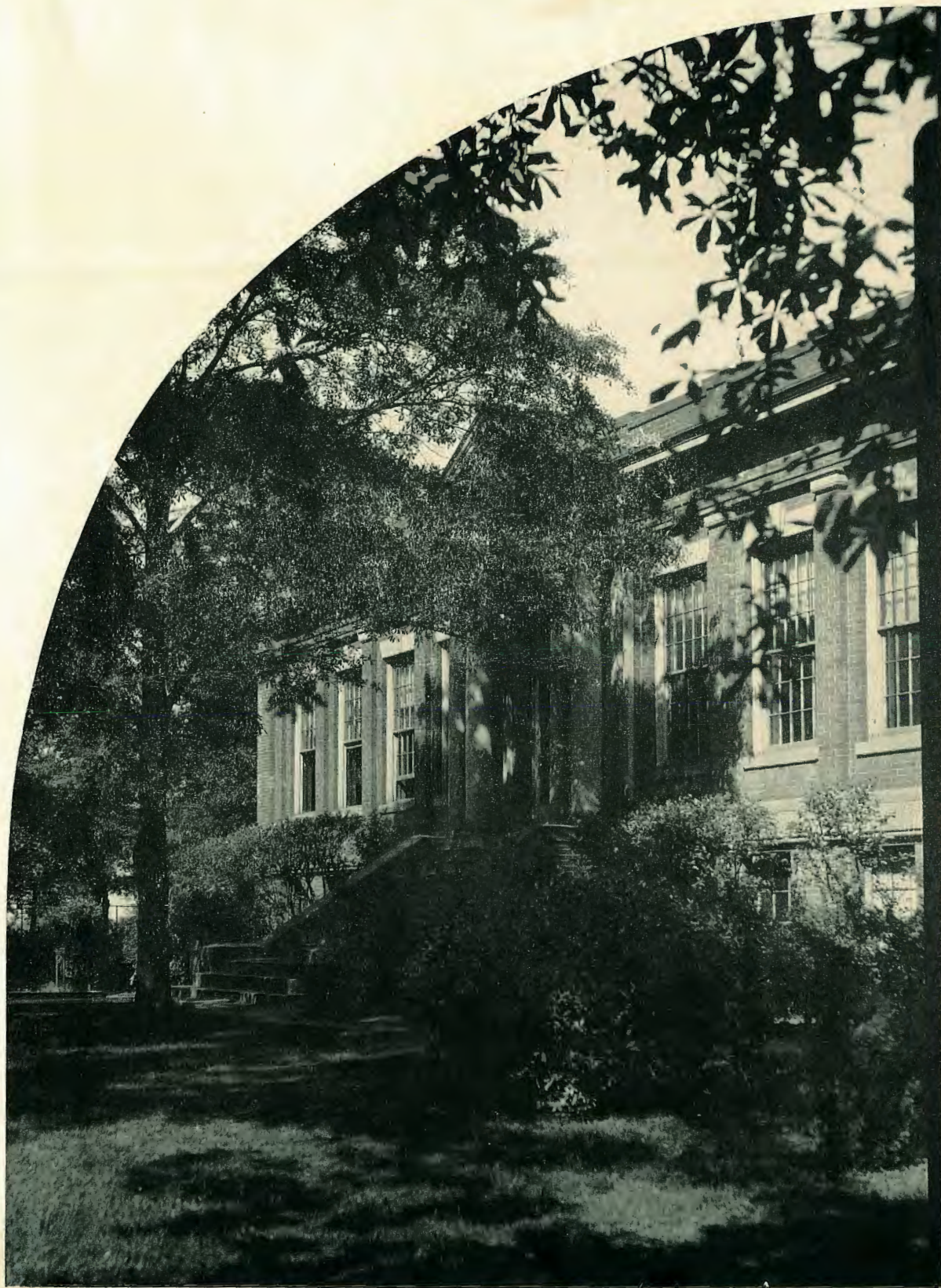
This year Wofford was selected as one of the colleges for a unit of the Civil Aeronautics Authority's college pilot training program. The Wofford unit is composed of twenty-three men, ranging from the Freshman to the Senior classes, and a larger unit is expected next year.

On the Wofford campus are located the following buildings:

Main Building  
Science Hall  
Library  
Y. M. C. A. Building  
Infirmary  
Andrew's Field House  
R. O. T. C. Building

Dormitories:  
Archer Hall  
Carlisle Hall  
Snyder Hall  
  
Nine faculty residences





COLLEGE LIBRARY



## ALPHA BETA GAMMA

Alpha Beta Gamma was founded at Wofford College as Phi Alpha Epsilon in 1933. The original group included many of the leaders of the campus. In 1935 the group became associated with two other locals and became known as the Kappa Sigma Kappa. This association lasted until early in 1940 when the Wofford group, after careful deliberation, decided to dissolve its affiliation with this group. This was done and the name Alpha Beta Gamma adopted.

The local group has always contained a number of the campus leaders. Since its foundation it has each year contributed at least one editor or business manager to the College publications. It has also had a number of members and officers in the various honorary fraternities. Scholastically, the fraternity has always rated very high.

The chapter holds a number of social functions each year. Parties, suppers, and dances are held throughout the school year. Each spring the fraternity holds its formal dance. This year it is to be held April 26th, and it is hoped that our petition for membership in Alpha Kappa Pi might be promptly approved so that we might be installed at that time.

\*\*\*\*\*

## THE COLLEGE AND FRATERNITIES

The College administration is very friendly toward fraternities. The various fraternal groups rent halls uptown, since they are not permitted by the college to maintain houses on the campus. The uptown halls contain sufficient space for game rooms and Chapter meetings. They are the uptown headquarters of the fraternity men.

Approval from the Wofford dean, Dr. A. Mason DuPre, was secured before submitting this petition.

Seven national fraternities operate on the Wofford campus; these are:

Alpha Lambda Tau  
Delta Sigma Phi  
Kappa Alpha

Kappa Sigma  
Lambda Chi Alpha  
Pi Kappa Phi

Sigma Alpha Epsilon



## A L U M N I

W. S. Allen  
 F. R. Atkinson  
 Lt. Cullen Bryant  
 C. L. Chapman, Jr.  
 J. R. Cross  
 S. M. Dannelly  
 G. H. Davidson  
 Rev. Sherwood Davis  
 M. K. Deloach  
 H. C. Gossett  
 D. S. Hartley, Jr.  
 W. H. Hendley, Jr.  
 V. R. Hickman  
 C. H. Holland, Jr.  
 E. S. Hunt, Jr.  
 L. C. Johnson, Jr.  
 J. B. King  
 E. M. Lander, Jr.  
 W. D. Livingston  
 P. J. Newton  
 R. L. Norrell  
 C. L. Parker  
 D. B. Reynolds  
 G. M. Schreyer  
 W. E. Souther  
 Harlan Shuler  
 G. W. Trakas  
 M. C. Way  
 L. C. Wilkerson  
 F. H. Williams  
 S. A. Yelverton

Inman, S. C.  
 Mullins, S. C.  
 Gerlach, Nev.  
 Savannah, Ga.  
 Cross, S. C.  
 Hampton, S. C.  
 Cliffside, N. C.  
 Jamestown, S. C.  
 Saluda, S. C.  
 U.S.C., Columbia, S.C.  
 Darlington, S. C.  
 Spartanburg, S. C.  
 Salley, S. C.  
 Spartanburg, S. C.  
 Fountain Inn, S. C.  
 Mullins, S. C.  
 Anderson, S. C.  
 Dillon, S. C.  
 Centenary, S. C.  
 Georgetown, S. C.  
 Pelzer, S. C.  
 Duke Div. Sch., Durham, N.C.  
 Vanderbilt Med. School  
 Duke Div. School  
 Vanderbilt Med. School  
 Ellenton, S. C.  
 Spartanburg, S. C.  
 Lanes, S. C.  
 Nichols, S. C.  
 Moorestown, N. J.  
 Siler City, N. C.

## P L E D G E S

B. Ahlin  
 W. F. Brown  
 S. T. Holland, Jr.  
 T. B. Horton, Jr.  
 W. C. Martin  
 W. L. Mills

Canton, N. C.  
 Iva, S. C.  
 Simpsonville, S. C.  
 Heath Springs, S. C.  
 Spartanburg, S. C.  
 Prosperity, S. C.



ALPHA BETA GAMMA takes a prominent place in leadership on the campus at Wofford. J. O. CROSBY, Jr., is President of Alpha Beta Gamma, photographer of The Bohemian, member of Carlisle Literary Society, member of the Baptist Student Union Council, and member of the staff of the Old Gold and Black. W. T. LANDER, Jr., is Vice-President of A B G, Editor of The Bohemian, member of International Relations Club, Past President of The Gavel, President of Pi Gamma Mu, member of the Varsity Debating team, President of Preston Literary Society, officer of South Carolina Young Democrats, Lieutenant R. O. T. C., has been listed in two volumes of Who's Who in American Colleges and Universities, and has been elected the student commencement speaker by the faculty.

Other members of the fraternity belong to Sigma Tau Alpha, Pi Gamma Mu, Sigma Epsilon, Chi Beta Phi, the Glee Club, and the Varsity Track Team.

Numerous parties, suppers, and house dances have provided entertainment for the members and friends of the fraternity. The year's social calendar is always rounded out into a grand finale with the annual spring formal dance. During the summer months the brotherhood usually enjoys a house-party at a nearby beach.

#### REGULAR MEMBERS

James O. Crosby, Jr.	Walterboro, S. C.
W. T. Lander, Jr.	Williamston, S. C.
E. A. Bradley, Jr.	Rembert, S. C.
R. L. Dennis	Rembert, S. C.
P. L. Peeples	Hampton, S. C.
J. R. T. Major, Jr.	Columbia, S. C.
W. J. Shealy	Leesville, S. C.
J. W. Henry	Spartanburg, S. C.



## ENDORSEMENTS

New York City, N. Y.  
March 15, 1940.

To the Collegiate Chapters,  
Alpha Kappa Pi Fraternity:

Dear Brothers:

It is with pleasure that I sanction the petition from Wofford College, Spartanburg, South Carolina, to the Alpha Kappa Pi Fraternity. I have been on the Wofford campus on several occasions, and there is no hesitancy whatsoever in sponsoring this group of young men to bear the name of our fraternity. Wofford is one of the old line colleges of the South, and nation, and there is nothing but good report to speak of its life and high grade instruction. Fraternity life is well developed at Wofford, and Alpha Kappa Pi would fit into the life there perfectly. Also a chapter at Wofford College would afford a near neighbor for our very excellent Eta Chapter, Presbyterian College, Clinton, South Carolina.

Without any reservations whatsoever I herewith endorse this petition for a charter in our fraternity.

Fraternally always,  
ALBERT HUGHES WILSON

\* \* \* \* \*

This petition has the hearty endorsement of the Presbyterian College Chapter of Alpha Kappa Pi fraternity, which is only fifty miles from Spartanburg. This is the nearest chapter of Alpha Kappa Pi, and it can answer questions concerning the Alpha Beta Gamma group at Wofford.