

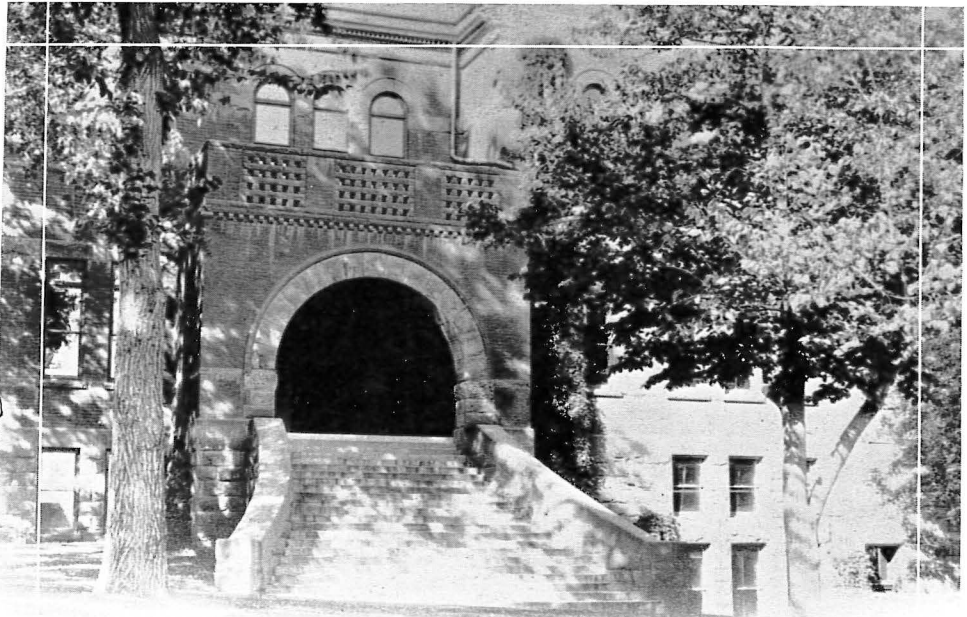
# History of the Colorado School of Mines

This Treatise gives the Location, History, Buildings and Equipment, Entrance Requirements, Financial Support, Tuition, Courses Offered, Degrees Conferred, Faculty and Size and Character of the School





An Aeroplane View



The Hall of Advanced Chemistry

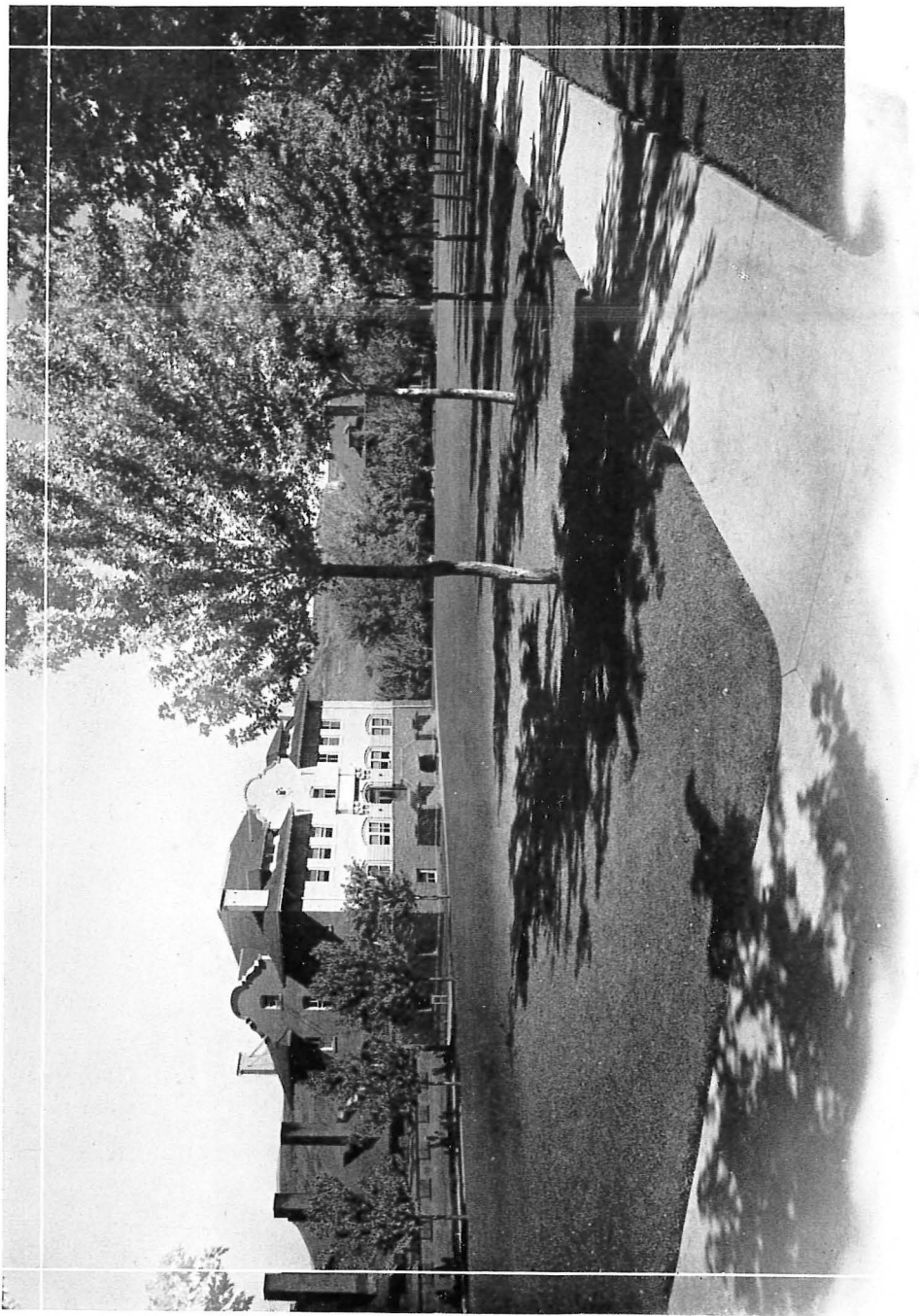
## History of the Colorado School of Mines

**Location** The Colorado School of Mines is situated in the city of Golden, Jefferson County, Colorado. Golden lies at the base of the Rocky Mountain foothills and has an elevation of five thousand seven hundred feet above sea level. It is one of the oldest cities in Colorado and has a population of about twenty-five hundred. The City of Denver lies about sixteen miles to the east and can be reached by three direct railway lines.

**History** In 1864, the year in which Columbia University of Mines, New York, had its inception, the practical miners of Gilpin County, Colorado, instigated a fund for the establishment of a mining school. The revenue was derived from a portion of the receipts from the recording and sale of mineral claims. However, at the present time, no record of this fund is obtainable. In 1868, Bishop Randall, of the Protestant Episcopal Church, established a university at Golden and made provisions for a school of mines. Bishop Randall's university was composed of three buildings, two of which were destroyed by fire in 1874. In the same year the school was removed to Denver.

The curriculum of the school at this time was in the charge of Professor E. J. Mallet, the only instructor, and consisted of courses in assaying and in simple chemical tests. In the same year the School of Mines demonstrated its peculiar value and intimate relation to the Rocky Mountain regions by completing favorable tests on the fuel values of Colorado coals, which had, up to this time, been regarded as unfit for smelting and railroad work and which led to the saving of millions of dollars each year.

In 1874 the appropriation was raised to \$5,000 and Bishop Randall transferred the School of Mines to the territorial authorities. On July 6, 1874, the first Board of Trustees met at Golden and accepted the title deeds from Bishop Randall together with a donation of five acres of land by C. C. Welch. The Board set



Stratton Hall



aside the bulk of the \$5,000 appropriation for the salary of Professor Mallett and the equipment of the school.

Under the act of 1877, the Board of Trustees transferred the property of the school from the territorial to the state board.

The year 1879 was a crucial one in the affairs of the Colorado School of Mines, which, at that time, was confronted by agitation to merge the school with the new State University at Boulder, Colorado. The location of the school at Golden, by the state constitution, served to stay the agitation in the General Assembly, and, at the urgent request of local friends, the school was given a further chance to "make good." A tax of one fifth of a mill was established for the support of the school in this year, thus assuring a steady financial support.

**From this time on, the school has shown a steady increase in buildings, in equipment, in faculty, in students, and in the vigor of its courses, until it is now the largest mining school in the world.**

On January 1, 1880, the first building of the present campus was opened, and the school staff was enlarged to four professors, a janitor and a laboratory assistant. The following year two hundred and fifty dollars was expended towards founding a school library. In 1882 an extension to the first building was completed and the degree Engineer of Mines, (E. M.), first instituted. The annals also show that this year the school won the championship of the Rocky Mountain region in rugby football.

In 1890, the Hall of Physics was added to the Hall of Chemistry and a gymnasium provided for on the lower floor. These three portions are now all united and called the Hall of Chemistry.

Bids for the experimental plant were advertised in 1888, and in the same year the president's residence was started. There were eight members of the faculty and sixty-five students at this time.

The Hall of Engineering was added to the campus in 1894, and the Assay Laboratory was completed in 1900. Contracts were let for Stratton Hall in 1902. The Hall was named in honor of the late W. S. Stratton who donated \$25,000 towards its cost. Guggenheim Hall, a gift of Ex-Senator Guggenheim, was dedicated in 1906. The power house was also built during this year, and the following year the present gymnasium was completed. By 1912 the school was entirely free from debt for the first time in its history. A choice of studies was opened to students in Metal Mining, Coal Mining, Metallurgy, Mining Geology and Chemistry.

**Building and Equipment** The campus grounds comprise approximately twenty-three acres, with eight buildings, in addition to the Metallurgical Research building, which is situated on the banks of Clear Creek, a few blocks from the campus of the school.

Guggenheim Hall—This building was erected and furnished at a cost of \$80,000. It is the administration building and is 164 feet long by 57 feet wide and is surmounted by an ornate tower. The first floor is devoted entirely to the geology department, and includes a lecture room, two laboratories, and office rooms. The second floor contains the library, and the offices of the administration. The third floor contains the assembly hall and offices and lecture rooms for the mathematics department.

Hall of Chemistry—This building contains the main chemical laboratories. There are two laboratories—one for Freshmen chemistry and one for Sophomore chemistry. In addition, there are the Physics laboratory, several large lecture rooms, the freshman and sophomore drawing room, laboratories for gas, fuel and spectroscopic analysis, and the chemical storerooms.

Assay Building—The design and equipment of this building make it probably the best of its kind in the country. There are thirty coal-burning and six oil-burning furnaces, with a desk for each. In addition there is a balance room, a parting room, an office and a storeroom.

Gymnasium—This building was erected at a cost of \$65,000. The first floor



Mine Surveying Laboratory at Idaho Springs

contains a large swimming pool, shower baths, and locker room, finished in white marble tiling. The second floor contains offices and club rooms. The third floor consists of the gymnasium proper.

**Hall of Engineering**—This building contains the school wireless telegraph and telephone apparatus, Junior chemistry laboratory, metallography laboratory, organic and oil shale laboratories, and store rooms.

**Power House**—This plant was erected at a cost of \$40,000 and is designed to furnish light, heat and power to the entire school. The equipment is of a very diversified nature as it is used as a mechanical engineering laboratory.

**Stratton Hall**—The first floor contains two large lecture rooms, with adjoining apparatus rooms. The second floor accommodates the surveying department and the military storeroom. The third floor is used entirely as a large drafting room for the junior and senior classes. The basement contains laboratories for metallurgy, electrical engineering and testing strength of materials laboratory.

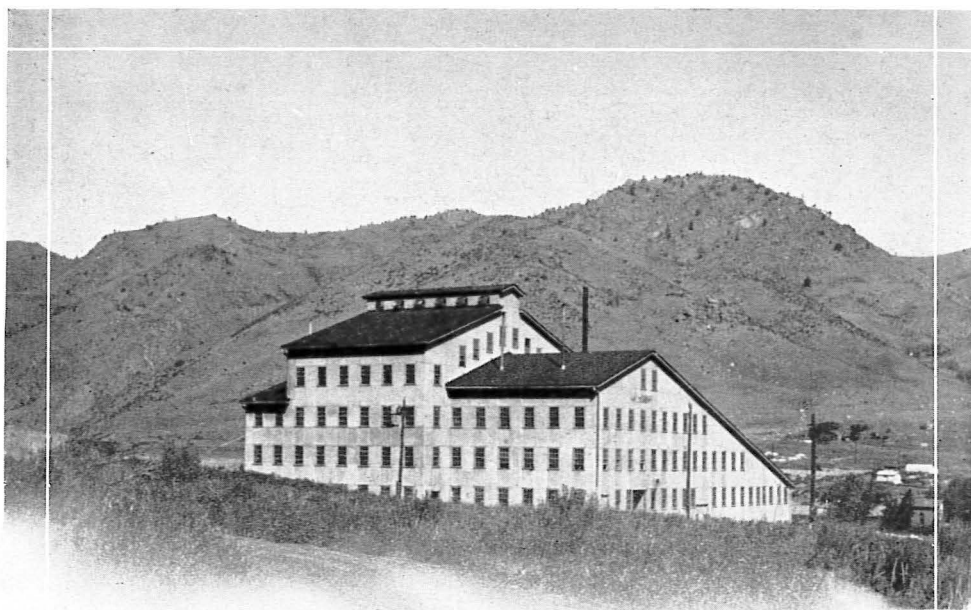
**The Metallurgical Research Building**—This building was built at a cost of over \$100,000 and is situated a short distance from the campus. It is used as a laboratory for ore dressing and also as a testing plant for the benefit of the mining industry. It is the largest and most complete of its kind in the United States.

**The Residence of the President**—This is a brick building of two and one-half stories.

In addition to the above buildings, there is a well-equipped machine shop for the maintenance and repair of equipment, and also for the construction of such apparatus as is required for carrying on any new or original work. A carpenter shop is maintained for the demands which are continually arising in a technical school.

**Organization** The general management of the school is vested by statute in a Board of Trustees, which consists of five members appointed by the Governor of the state, with the advice and consent of the Senate. The members of the Board hold their office for a period of four years, and are appointed in alternating sets of two and three.

**Entrance Requirements** The entrance requirements consist of fifteen standard units, eight of which are specified and seven may be chosen from a list of electives.



#### The Oredressing and Metallurgical Plant

**Financial Support—Tuition** The Constitution of Colorado recognizes the School of Mines as an institution of the state which is supported by an income derived from an annual mill tax known as the "School of Mines Tax." In addition, non-residents of Colorado must pay tuition. Certain fees are assessed for certain courses on all students except scholarship students. These fees are used to cover depreciation, breakage, etc., on apparatus used.

**Courses offered** The regular courses offered in the school are five in number: Metal Mining, Mining Geology, Metallurgy, Chemical Engineering and Petroleum Engineering. Last September three new courses were proposed: Electrical Engineering, Civil Engineering, and Mechanical Engineering.

**Degrees Conferred** The following degrees are conferred:

E. M. (Engineer of Mines).	M. S. (Master of Science).
E. Met. (Metallurgical Engineer).	Sc. D. (Doctor of Science.)
Ch. E. (Chemical Engineer).	Ph. D. (Doctor of Philosophy).
Pet. E. (Petroleum Engineer).	Dr. Eng. (Doctor of Engineering).

The proposed new courses will offer the following degrees:

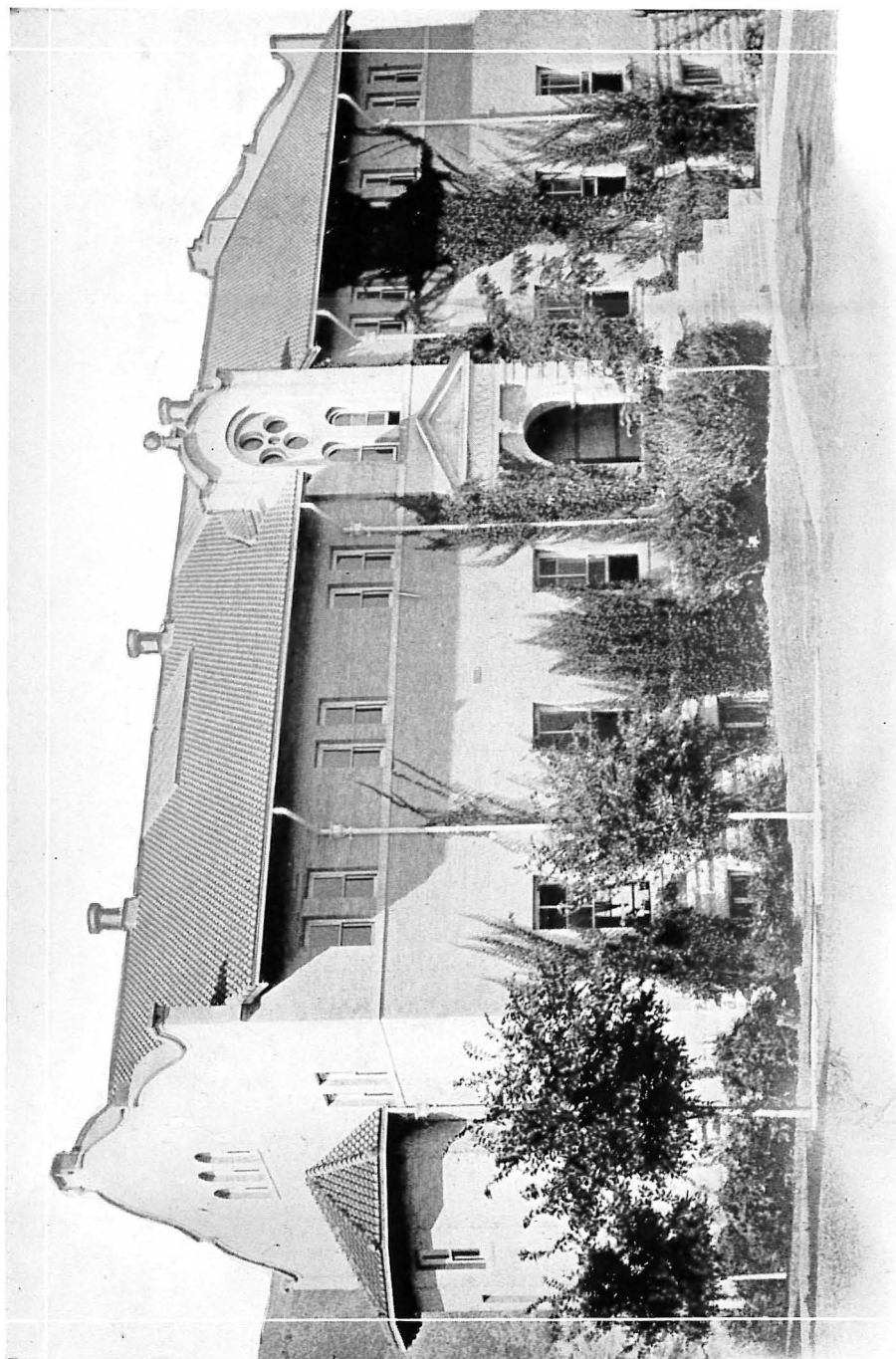
C. E. (Civil Engineer).	M. E. (Mechanical Engineer).
E. E. (Electrical Engineer).	

**The Faculty** The faculty consists of the following:

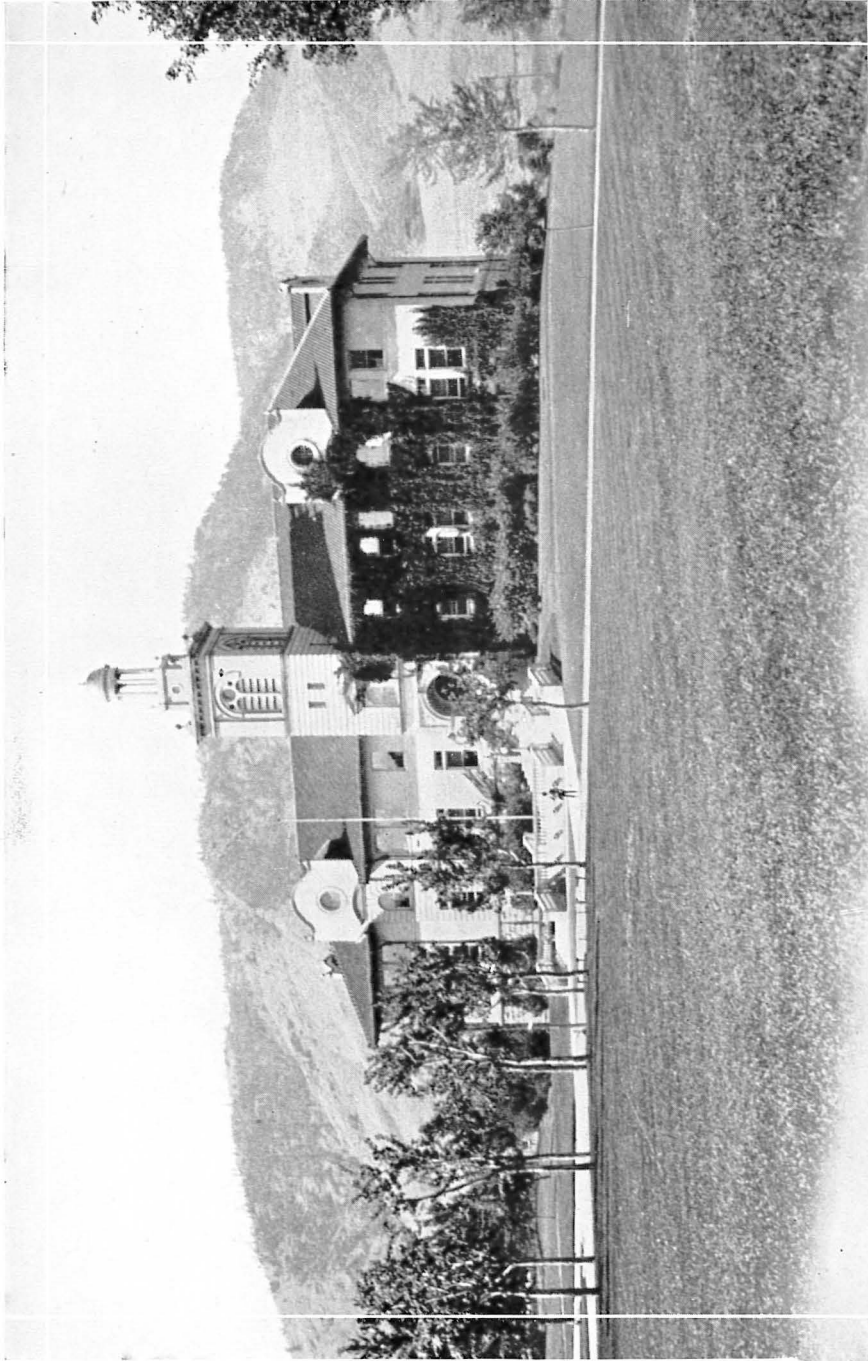
1 President	8 Assistant Professors
4 Deans and Directors	10 Instructors
13 Professors	1 Field Secretary
4 Associate Professors	

The aim of the president has been to place men on the faculty who are specialists in their work. To what extent this has been accomplished may be gained from the world-wide reputation that the school has attained. Among the colleges represented in the faculty these prominent ones appear: Harvard, Columbia, University of Michigan, Massachusetts Institute of Technology, Ohio State University, South Dakota School of Mines, University of Illinois, University of Kansas, and Armour Institute of Technology.

**Size and Character** In September, 1922, the enrollment of the school was five hundred and four. This represents an increase of about 175 per cent within the last five years. The school is open to all, regardless of sex, creed or color. There are at this time no women attending. The student body is drawn from forty-four states of the Union and eleven foreign countries. It also represents former attendance at ninety-eight other colleges and universities.

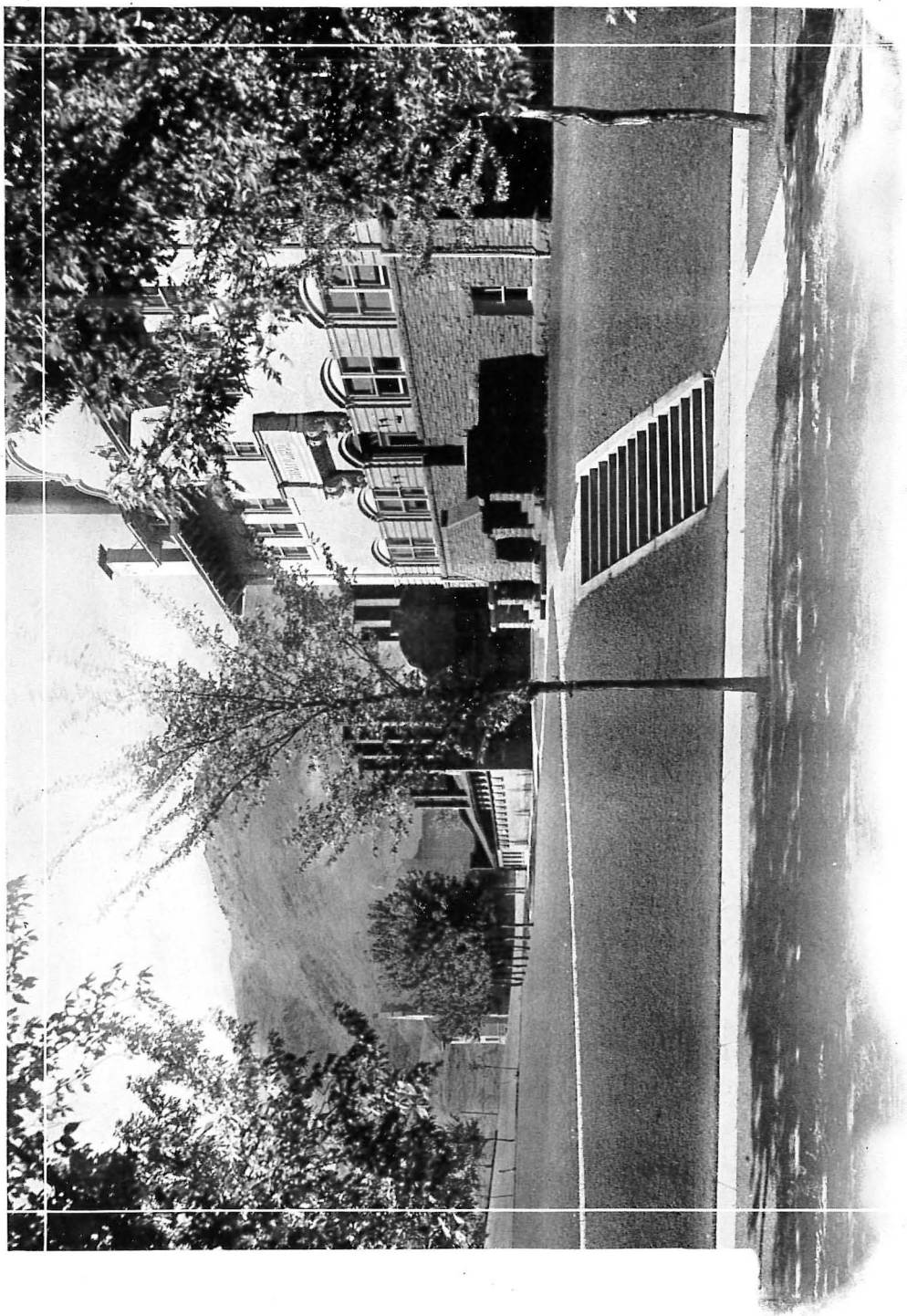


The Gymnasium



Simon Guggenheim Hall





A Campus View



# Social Conditions in Golden

Herein is a Brief Discussion of the Student Organization, of Fraternities and Clubs, and Other Activities which enter into the Social Life of the School.



The Hall of Chemistry

# Social Conditions in Golden

## Student Organization, Fraternities, Clubs, Other Societies, and General Remarks.

**Student Organization** The student body is governed by a group of twelve men called the Student Council. The president of this student legislature is elected by the entire student body and is the representative of the organization of which he is a member. The remaining members are elected by their own organizations. Every society has one representative with the exception of the non-fraternity men who have four. This council controls student activities other than athletics. School athletics are regulated by an Athletic Council composed of four members, two of whom are members of the faculty and two of whom are members of the Senior class. These members are elected by the entire student body.



Beta Theta Pi House



Kappa Sigma House

**Fraternities** The social activities of the Colorado School of Mines are centered about four national fraternity chapters, three honorary national fraternity chapters, and one local fraternity.

The first chapter of the general national fraternities was established in 1901. Within the next seven years the entire four chapters had been founded.

National	Chapter Founded	Members	Pledges
Sigma Nu	1901	25	6
Sigma Alpha Epsilon	1903	20	9
Kappa Sigma	1904	35	8
Beta Theta Pi	1908	26	6

The three honorary, engineering, national fraternity chapters consist of Alpha Colorado Chapter of Tau Beta Pi, Gamma Chapter of Theta Tau, and Colorado Lambda Chapter of Sigma Gamma Epsilon. Tau Beta Pi is composed of those students who are the most proficient in their studies. Theta Tau consists of those students who have attained marked efficiency in scholastic standing, in athletics, and in general student activities. Sigma Gamma Epsilon is restricted to those students who have taken an active interest in mining, geology, and metallurgy. These chapters meet once or twice a month. They play a small part in the social life of the school.

National	Founded
Tau Beta Pi	1905
Theta Tau	1907
Sigma Gamma Epsilon	1922

The only local fraternity is Mu Epsilon Tau.

**Clubs** Besides the four general fraternity chapters, three honorary fraternity chapters, and the one local fraternity, there are eight other social organizations in the school: The Latin-American Club, Chinese Club, Stray Greek Club, Minen Club, Trowel Club, "M" Club, Texas Club, and Ohio Club. The Latin-American Club is limited to students from Latin-American countries. The Chinese Club is composed of Chinese only. The membership of the Stray Greek Club



S. A. E. House

consists of national fraternity men whose society has no chapter in the school. The Minen Club is a non-fraternity organization which was established in 1921. It has been rumored recently that this society has taken active steps to become affiliated with a national fraternity. Men in school who have won their letters for participation in intercollegiate athletics are members of the "M" Club. Students of the Masonic Order have organized the Trowel Club. The Texas Club is composed of students from the Lone Star state. The Ohio Club consists of native sons from the Buckeye state.

**Other Activities** The Glee Club, Band, Radio Society, and the Scientific Society are also important school organizations. The Radio Society was formed for those men interested in wireless and radio telegraphy. The Scientific Society is for Junior Associate members of the American Institute of Mining and Metallurgical Engineers.

**General Remarks** During the four years included between 1918 and 1922 the enrollment of the school has increased one hundred and seventy-seven per cent. The total enrollment for the school year 1921-22 was four hundred and fifty-five. During the present school year, 1922-23, the enrollment of the school has increased fifteen per cent over that of last year. The present attendance of five hundred and four is the largest since the founding of the school. **Notwithstanding this enormous increase it is well to note that no general national fraternity has established a chapter in the Colorado School of Mines within the past fourteen years and that, with the exception of the recently organized Minen Club, no national fraternity has been petitioned by a local society within that time.** Student membership in general national fraternity chapters at Golden is less than twenty-five per cent.



Sigma Nu House

# Mu Epsilon Tau Fraternity

The Following Pages Contain a Short History, Policy, Scholastic Standing, Activity, Size and Financial Report of the Petitioning Local.



M. E. T. House

## Mu Epsilon Tau Fraternity

**History, Policy, Scholastic Standing, School Activities, Social Activities, Size and Financial Report.**

**History** In the fall of the year 1918, a club was formed on the campus of the Colorado School of Mines. The main purpose of this club was the discussion of mining, metallurgical, and geologic subjects. The Greek word, Metallikos (meaning mining), was adopted as a suitable name for the society, but soon the abbreviation, M. E. T. Club, came into common usage. The organization had a constitution and officers. Meetings which were nothing more than "discussion groups" were held every week. Social activities were not participated in until the following year, 1919, when the members of the society, realizing the urgent need of more social organizations in the rapidly expanding school, decided to establish a local fraternity. Accordingly, a petition was prepared and presented to the faculty of the Colorado School of Mines, in which it was requested that permission be granted to establish a local fraternity on the campus. This request was granted readily.

Having been granted permission to establish a local fraternity, the members of the Metallikos Club immediately changed the name of the organization to Mu Epsilon Tau, Greek letters which retained some idea of the original name. From this time on the new fraternity, backed by a firm constitution, was conducted along splendid lines of organization and soon developed into a strong brotherhood whose influence was soon to be felt in campus activities.

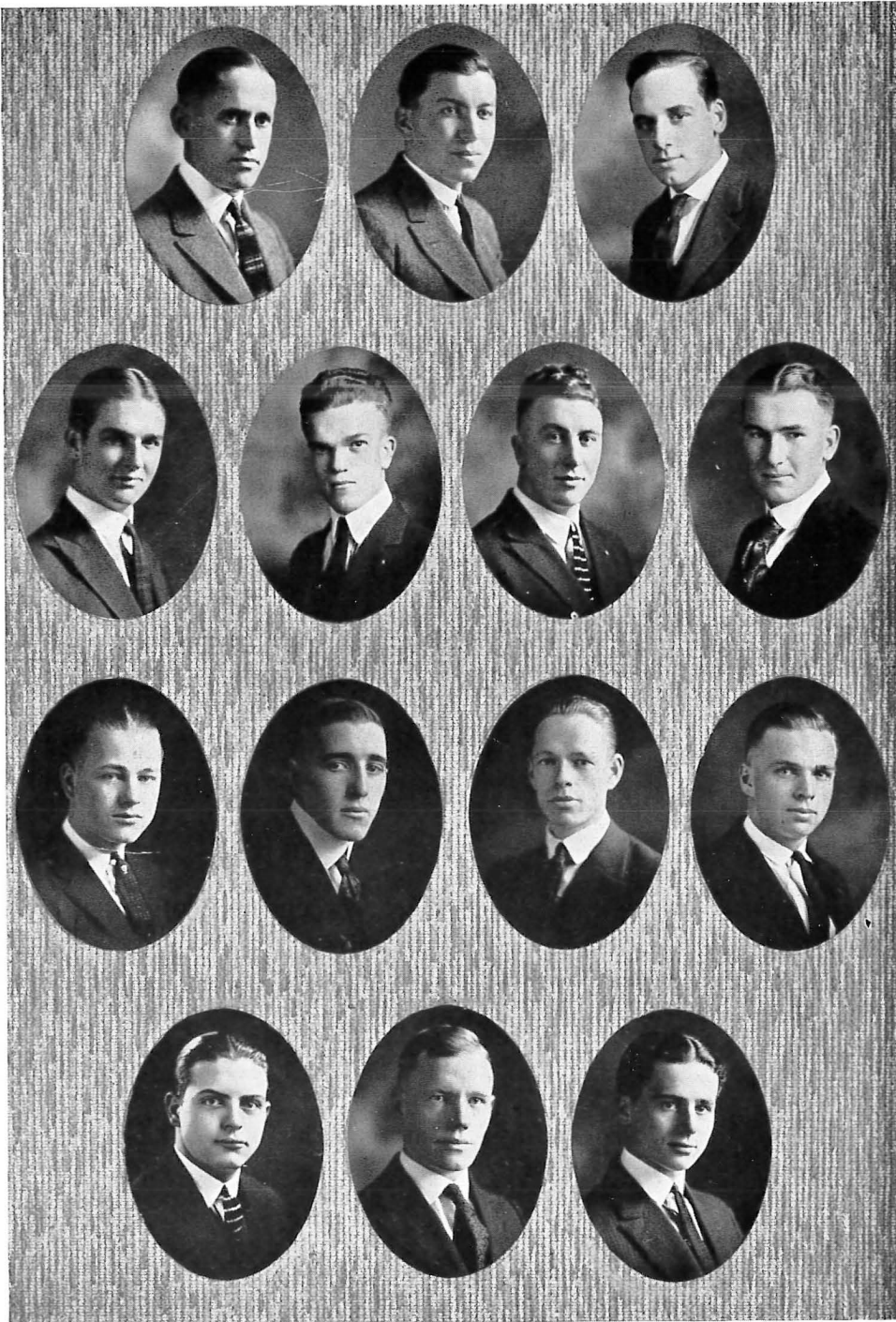
During the first year of the founding of Mu Epsilon Tau, the fraternity had no house. However, at the opening of the 1921 school term the Fraternity obtained two, small, adjacent houses which were ideally located on the campus. The larger of the two houses is now held; the smaller one having been discarded as inconvenient and unnecessary.

**Policy** "The policy of the fraternity has been and is, to enjoy a unity of purpose and the advantages of organization, and in so doing to derive the benefits of good fellowship."

**Scholarship** The scholastic standing of the Fraternity has never averaged below 80 per cent. In the last tabulation of general national fraternity averages Mu Epsilon Tau, with an average of 84.6 per cent., was placed first. At the 1922 graduation exercises, Mr. L. S. Woerber, M. E. T., received the Wolff medal which is given to the graduate who has maintained the highest scholastic average during his entire college career.

Scholastic success of the organization as a whole is accomplished through careful management. Individual grades of the members are obtained and posted each month by the Fraternity. A member may be declared in bad standing if he fails to meet certain scholastic requirements which are specified by the organization. Pledges and members who, on account of improper high school training, find their school work difficult are given special instruction at night classes conducted by upper-classmen. A pledge who has failed to maintain a creditable standing in the class-rooms is not initiated into the Fraternity.





F. Sistermans  
E. J. Brook  
W. Volk

F. E. Delahunty

F. M. Fairbairn  
W. A. Freeman

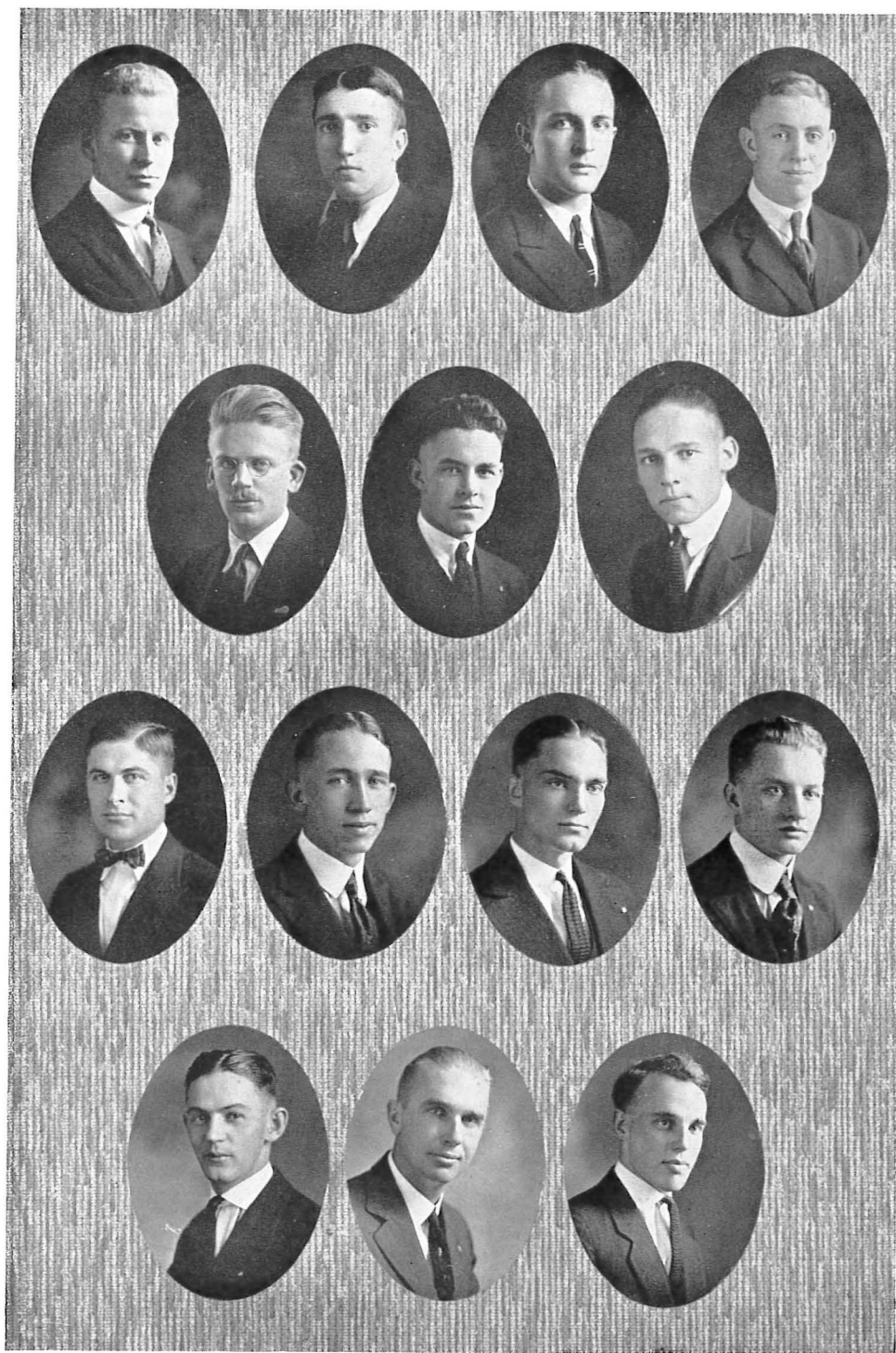
R. D. Mueller

P. R. Krantz

R. W. Litheredge  
H. Ray Lee

D. M. Davis

C. D. Beeth  
D. Purvis  
M. Kiess



L. S. Woeber  
M. B. Jones  
W. R. Anderson  
V. B. Smith

V. L. Denunzio  
A. Rodriguez  
F. W. Kirby  
C. C. Brook

W. T. Millar  
C. F. Beilharz

R. T. Litheredge  
E. Chapman  
C. T. Baroch  
T. H. Griggs

**Student Activities** Each year Mu Epsilon Tau becomes stronger in student activities. The steady rise is readily realized from a study of Fig. 1.

**Social Activities** The social activities of the school are very limited. However, Mu Epsilon Tau participates equally with all the general national fraternities in all social affairs.

**Size** From the very beginning it has been the policy of the Fraternity to limit membership to thirty or thirty-five members, because it is believed that a stronger organization results from this policy. At the present time the Fraternity is composed of twenty-three active members, twelve pledges, and four alumni.

The officers elected for this semester are as follows:

Vernon B. Smith, President  
H. Ray Lee, Vice President  
Truman Griggs, Business Mgr.  
Frank E. Delahunty, Rec. Sec.  
Edward J. Brook, Cor. Sec.

#### FINANCIAL REPORT

Assets	Liabilities
Furniture .....\$1879.54	Bills payable .....\$ 718.32
Kitchen utensils ..... 94.36	Capital ..... 3153.06
Cash ..... 186.54	
Bills Receivable ..... 605.74	
Loans ..... 1105.20	
\$3871.38	\$3871.38

#### Student Activities

	1920	1921	1922
Football squad .....	1	3	7
Football (Frosh).....	5	4	8*
Basketball (Frosh) .....			4*
Baseball team.....	3	4	4
Track .....		6	5
Boxing and Wrestling.....			4
Athletic Managers .....			2
Tau Beta Pi.....		1	3
Sigma Gamma Epsilon .....		1	2
Special Committees .....		2	
Publication Staff .....		4	4
Scholarships held.....	6	9	9
A. I. M. E. ....	5	6	6
Miscellaneous Clubs & Soc.....	3	9	11
R. O. T. C. Officers .....		4	5
Band .....	2	1	5
Total - - - - -	25	54	79

Figure 1 Shewing the gradual rise, year by year, in student activities (\*Captain).

# Individual Records of Petitioners

## INDIVIDUAL RECORD

**Name,** Charles Thomas Baroch

**College address,** M. E. T. House, Golden, Colorado

**Home address,** Golden, Colorado

**Name of Father,** Chas J. Baroch. **Mother,** Anna Spatny

**Where were you born?** Chicago, Ill. **When** May 18, 1901

**Height,** 5 ft. 7 in. **Weight,** 158 lbs. **Complexion,** light

**Color of hair,** blonde. **Eyes,** blue

**Nationality, i. e. descent,** Czecho-Slovak

**Where prepared for college,** North Denver High School

**Preparatory school honors**

**Other colleges attended**

**Honors there**

**Degrees taken and year**

**Department in this institution,** Metal Mining

**Class,** 1923

**Honors taken,** Assistant Editor School paper  
Assistant Editor Annual staff  
Vice President Mines Christian Association.  
Officer R. O. T. C.

**Member of clubs, fraternities, etc., with names of each and if a fraternity what is its character?**

Glee Club  
American Institute of Mining and Metallurgical Engineers  
Mu Epsilon Tau (local)

## INDIVIDUAL RECORD

**Name,** Clarence Donald Beeth

**College Address,** M. E. T. House, Golden, Colorado

**Home address,** Tucumcari, N. Mex.

**Name of father,** Clarence D. Beeth. **Mother,** Gertrude Allen

**Where were you born?** Newton, Kansas. **When,** May 18, 1901

**Height,** 5 ft. 10 in. **Weight,** 155 lbs. **Complexion,** Dark.

**Color of hair,** black. **Eyes,** gray

**Nationality, i. e. descent,** Scotch-Irish

**Where prepared for college,** Tucumcari High School

**Preparatory school honors,** Basketball, Class President

**Other colleges attended**

**Honors there**

**Degrees taken and year**

**Department in this institution,** Metal Mining

**Class,** 1924

**Honors taken**

**Member of clubs, fraternities, etc., with names of each and if a fraternity what is its character?**

Radio Club (President)  
Mu Epsilon Tau (local)



## INDIVIDUAL RECORD

**Name,** Carl Frichot Beilharz

**College Address,** M. E. T. House, Golden, Colorado

**Home address,** 2723 Swiss Ave., Dallas, Texas

**Name of father,** C. F. Beilharz. **Mother,** Laura Frichot

**Where were you born?** Dallas, Texas. **When,** January 21, 1904

**Height,** 5 ft. 9 in. **Weight,** 155 lbs. **Complexion,** medium

**Color of hair,** Brown. **Eyes,** Blue

**Nationality, i. e. descent,** German

**Where prepared for college,** Terrill school, Dallas, Tex., Dallas High School

**Preparatory school honors,** Scholarship  
Annual Staff  
Newspaper Staff  
Basketball

**Other colleges attended**

**Honors there**

**Degrees taken and year**

**Department in this institution,** Metal Mining

**Class,** 1925

**Honors taken**

Frosh Football  
Frosh Basketball (Capt.)  
Class Treasurer 21-22

**Member of clubs, fraternities, etc., with names of each and if a fraternity what is its character?**

Texas Club  
Mu Epsilon Tau (local)

## INDIVIDUAL RECORD

**Name,** Charles Chester Brook

**College Address,** M. E. T. House, Golden, Colorado

**Home address,** 1313 High St., Bellingham, Washington

**Name of father,** Charles E. Brook. **Mother,** Almeda Brownlee

**Where were you born?** Aberdeen, S. Dak. **When,** July 26, 1894

**Height,** 6 ft. 1 in. **Weight,** 180 lbs. **Complexion,** light.

**Color of hair,** light brown. **Eyes,** gray

**Nationality, i. e. descent,** English

**Where prepared for college,** Custer Co. High School, Miles City, Montana.

**Preparatory school honors,** Scholarship

**Other colleges attended**

**Honors there**

**Degrees taken and year**

**Department in this institution,** Metal Mining

**Class,** 1923

**Honors taken**

**Member of clubs, fraternities, etc., with names of each and if a fraternity what is its character?**

Tau Beta Pi

Trowel Club

A. I. M. E.

Mu Epsilon Tau (local)

## INDIVIDUAL RECORD

**Name,** Edward Joseph Brook

**College Address,** M. E. T. House, Golden, Colorado

**Home address,** 1313 High St., Bellingham, Washington

**Name of father,** Charles E. Brook. **Mother,** Almeda Brownlee

**Where were you born?** Aberdeen, S. Dak. **When,** May 6, 1901

**Height,** 6 ft. 1 in. **Weight** 170 lbs. **Complexion,** light

**Color of hair,** brown. **Eyes,** gray

**Nationality, i. e. descent,** English

**Where prepared for college,** Custer High School, Miles City, Montana

**Preparatory school honors,** Valedictorian  
Scholarship  
Debate (3) (4) Capt. (4)  
Extemporaneous (4)  
Student Council (4)

**Other colleges attended**

**Honors there**

**Degrees taken and year**

**Department in this institution,** Metal Mining

**Class,** 1923

**Honors taken,** Boxing and Wrestling Mgr.  
Football squad

**Member of clubs, fraternities, etc., with names of each and if a fraternity what is its character?**

Tau Beta Pi Fraternity  
A. I. M. E.  
Mu Epsilon Tau (local)

## INDIVIDUAL RECORD

**Name,** Martin Edward Chapman

**College Address,** M. E. T. House, Golden, Colorado

**Home address,** Lafayette, Colorado

**Name of father,** Herbert Chapman. **Mother,** Anna Phillips

**Where were you born?** Denver, Colo. **When,** August 17, 1902

**Height,** 5 ft. 10 in. **Weight,** 150 lbs. **Complexion,** Dark

**Color of hair,** brown. **Eyes,** brown

**Nationality, i. e. descent,** English and French

**Where prepared for college,** East Denver High School

**Preparatory school honors,** Track (3)  
Football (2)  
Baseball (1)  
Basketball (1)

**Other colleges attended**

**Honors there**

**Degrees taken and year**

**Department in this institution,** Metal Mining

**Class,** 1925

**Honors taken,** Freshman Football, Varsity squad, Boxing team, Track team

**Member of clubs, fraternities, etc., with names of each and if a fraternity what is its character?**

Mu Epsilon Tau (local)

## INDIVIDUAL RECORD

**Name,** Donald Morrison Davis

**College Address,** M. E. T. House, Golden, Colorado

**Home address,** 1335 Columbia Rd., Washington, D. C.

**Name of father,** George R. Davis. **Mother,** Henrietta Morrison

**Where were you born?** Washington, D. C. **When,** Nov. 28, 1901

**Height,** 5 ft. 7 in. **Weight** 148 lbs. **Complexion,** dark

**Color of hair,** dark brown. **Eyes,** brown

**Nationality, i. e. descent,** Danish-English

**Where prepared for college,** Central High School, Washington, D. C.

**Preparatory school honors,** Baseball

**Other colleges attended**

**Honors there**

**Degrees taken and year**

**Department in this institution,** Metal Mining

**Class,** 1925

**Honors taken**

**Member of clubs, fraternities, etc., with names of each and if a fraternity what is its character?**

A. I. M. E.  
Mu Epsilon Tau (local)

## INDIVIDUAL RECORD

**Name,** Frank Eric Delahunty

**College Address,** M. E. T. House, Golden, Colorado

**Home address,** La Porte, Calif.

**Name of father,** Frank M. Delahunty **Mother,** Marguerite McMahon

**Where were you born?** Gibbonsville, Calif. **When,** May 27, 1901

**Height,** 5 ft. 11 in. **Weight,** 163 lbs **Complexion,** dark

**Color of hair,** dark brown. **Eyes,** blue

**Nationality, i. e. descent,** Irish

**Where prepared for college,** Christian Brothers College, Sacramento, Calif.

**Preparatory school honors,** Football (2), (3), (4)  
Baseball (1)  
Basketball (1) (2)  
Dramatic Society

**Other colleges attended,** St. Marys College

**Honors there,** Baseball (1)  
Football (1)  
Class Treasurer (1)  
Class Vice Pres. (2)

**Degrees taken and year**

**Department in this institution,** Metal Mining

**Class,** 1925

**Honors taken,** Football Numerals  
Baseball squad  
Student Council  
Freshman Basketball

**Member of clubs, fraternities, etc., with names of each and if a fraternity what is its character?**

Mu Epsilon Tau (local)



## INDIVIDUAL RECORD

**Name,** Vincent Louis Denunzio

**College Address,** M. E. T. House, Golden, Colorado

**Home address,** 1186 East Broadway, Louisville, Ky.

**Name of father,** Mark Denunzio. **Mother,** Augusta Cassella

**Where were you born?** Louisville, Ky. **When,** June 1, 1900

**Height,** 5 ft 6 in. **Weight** 135 lbs. **Complexion,** dark

**Color of hair,** dark brown. **Eyes,** brown

**Nationality, i. e. descent,** Italian

**Where prepared for college,** Louisville Boys' High School

**Preparatory school honors,** Football  
Literary Societies  
School magazine staff  
School annual staff

**Other colleges attended**

**Honors there**

**Degrees taken and year**

**Department in this institution,** Metal Mining

**Class,** 1923

**Honors taken,** Newspaper Staff (2) (3)  
Business Manager Annual  
Officer R. O. T. C.

**Member of clubs, fraternities, etc., with names of each and if a fraternity what is its character?**

Sigma Gamma Epsilon  
A. I. M. E.  
Mu Epsilon Tau (local)

## INDIVIDUAL RECORD

**Name,** Frank Manhard Fairbairn

**College Address,** M. E. T. House, Golden, Colorado

**Home address,** Berthoud, Colorado

**Name of father,** Andrew Fairbairn. **Mother,** Lucy Manhard

**Where were you born?** Berthoud, Colo. **When,** April 22, 1897

**Height,** 4 ft 2 in. **Weight,** 102 lbs. **Complexion,** medium

**Color of hair,** light brown. **Eyes,** brown

**Nationality, i. e. descent,** Scotch

**Where prepared for college,** Berthoud High School

**Preparatory Honors,** Basketball  
Baseball  
Cheer leader  
Scholarship  
Prominent in all school activities

**Other colleges attended**

**Honors there**

**Degrees taken and year**

**Department in this institution,** Metallurgy

**Class,** 1923

**Honors taken,** Cheer Leader (1), (2) (3)  
Mgr. Basketball  
Band (1), (2)  
Class Treasurer, (1), (2)  
Baseball squad

**Member of clubs, fraternities, etc., with names of each and if a fraternity what is its character?**

Trowel club  
"M" Club  
Mu Epsilon Tau (local)

## INDIVIDUAL RECORD

**Name,** William Aloysius Freeman

**College Address,** M. E. T. House, Golden, Colorado

**Home address,** 56 Grant St., Denver, Colo.

**Name of father,** Michael Freeman. **Mother,** Mary Miller

**Where were you born?** Denver, Colo. **When,** September 6, 1900

**Height,** 5 ft. 8 in. **Weight** 130 lbs. **Complexion,** light

**Color of hair,** brown. **Eyes,** brown

**Nationality, i. e. descent,** Irish

**Where prepared for college,** Sacred Heart College, Denver, Colorado

**Preparatory honors,** Gold medal scholarship  
Literary Societies  
Assistant editor Newspaper  
Class officer

**Other colleges attended**

**Honors there**

**Degrees taken and year**

**Department in this institution,** Mining Geology

**Class,** 1923

**Honors taken,** Officer R. O. T. C.

**Member of clubs, fraternities, etc., with names of each and if a fraternity what is its character?**

A. I. M. E.  
Mu Epsilon Tau (local)

## INDIVIDUAL RECORD

**Name,** Truman Albert Griggs

**College Address,** M. E. T. House, Golden, Colorado

**Home address,** 2122 N. Marengo Ave., Pasadena, Calif.

**Name of father,** Albert E. Griggs. **Mother,** Anna T. Clausen

**Where were you born?** Minneapolis, Minn. **When,** Sept. 1, 1899

**Height,** 5 ft. 7 in. **Weight,** 140 lbs. **Complexion,** light

**Color of hair,** brown. **Eyes,** blue

**Nationality, i. e. descent,** English-Canadian

**Where prepared for college,** Manual Arts High School, Los Angeles, Calif.

**Preparatory honors,** Scholarship

**Other colleges attended,** California Technical Institute

**Honors there**

**Degrees taken and year**

**Department in this institution,** Petroleum Engineering

**Class,** 1923

**Honors taken**

**Member of clubs, fraternities, etc., with names of each and if a fraternity what is its character?**

Mu Epsilon Tau (local)

## INDIVIDUAL RECORD

**Name,** Harold Warren Haight

**College Address,** M. E. T. House, Golden, Colorado

**Home address,** Tucumcari, New Mexico

**Name of father,** Alfred W. Haight. **Mother,** Lulu Blanche

**Where were you born?** Chickasha, Okla. **When,** July 21, 1902

**Height,** 5 ft. 9 in. **Weight,** 185 lbs. **Complexion,** dark

**Color of hair,** dark brown. **Eyes,** brown

**Nationality, i. e. descent,** Dutch

**Where prepared for college,** Tucumcari High School

**Preparatory school honors,** Scholarship

**Other Colleges attended**

**Honors there**

**Degrees taken and year**

**Department in this institution,** Metal Mining

**Class,** 1925

**Honors taken**

**Member of clubs, fraternities, etc., with names of each and if a fraternity what is its character?**

Band

Mu Epsilon Tau (local)

## INDIVIDUAL RECORD

**Name,** Marshall Gardner Jones

**College Address,** M. E. T. House, Golden, Colorado

**Home address,** New Smyrna, Fla.

**Name of father,** Robert W. Jones. **Mother,** Marie Gardner

**Where were you born?** Glouster, Ohio. **When,** October 1, 1901

**Height,** 5 ft. 10 in. **Weight,** 135 lbs. **Complexion,** dark

**Color of hair,** brown. **Eyes,** gray

**Nationality, i. e. descent,** English-Irish

**Where prepared for college,** New Smyrna High School

**Preparatory school honors,** Scholarship  
Class President  
Track

**Other colleges attended**

**Honors there**

**Degrees taken and year**

**Department in this institution,** Petroleum Eng.

**Class,** 1925

**Honors taken**

**Member of clubs, fraternities, etc., with names of each and if a fraternity what is its character?**

Ohio Club.  
Mu Epsilon Tau (local

## INDIVIDUAL RECORD

**Name,** Percy Randolph Krantz

**College Address,** M. E. T. House, Golden, Colorado

**Home address,** Dunton, Colorado

**Name of father,** John S. Krantz. **Mother,** Margaret Youngclaus

**Where were you born?** Rico, Colo. **When,** Sept. 10, 1899

**Height,** 6 ft. **Weight,** 150 lbs. **Complexion,** blonde

**Color of hair,** blonde. **Eyes,** blue

**Nationality, i. e. descent,** Swedish-Scotch-Irish-English

**Where prepared for college,** Durango High School, Durango, Colorado

**Preparatory school honors,** Scholarship

**Other colleges attended**

**Honors there**

**Degrees taken and year**

**Department in this institution,** Mining Geology

**Class,** 1923

**Honors taken,** Track

**Member of clubs, fraternities, etc., with names of each and if a fraternity what is its character?**

A. I. M. E.

"M" Club

Mu Epsilon Tau (local)

## INDIVIDUAL RECORD

**Name,** Myron Christopher Kiess

**College Address,** M. E. T. House, Golden, Colorado

**Home address,** Bucyrus, Ohio, R. R. No. 8

**Name of father,** Mr. L. O. Kiess. **Mother,** Jemima Pfahler

**Where were you born?** Bucyrus, Ohio. **When,** May 30, 1902

**Height,** 5 ft. 4 in. **Weight** 138 lbs. **Complexion,** dark

**Color of hair,** black. **Eyes,** brown

**Nationality, i. e. descent,** German-French

**Where prepared for college,** Bucyrus High School

**Preparatory school honors,** Dramatics

**Other colleges attended**

**Honors there**

**Degrees taken and year**

**Department in this institution,** Metal Mining

**Class,** 1925

**Honors taken**

**Member of clubs, fraternities, etc., with names of each and if a fraternity what is its character?**

Ohio Club

Mu Epsilon Tau (local)



## INDIVIDUAL RECORD

**Name,** Henry Raymond Lee

**College Address,** M. E. T. House, Golden, Colorado

**Home address,** 900 Garden St., Bellingham, Washington.

**Name of father,** Peter Lee. **Mother,** Lucy Torbenson

**Where were you born?** Minot, N. Dak. **When,** July 13, 1899

**Height,** 6 ft. **Weight,** 165 lbs. **Complexion,** light

**Color of hair,** brown. **Eyes,** gray

**Nationality,** i. e. descent, Norwegian

**Where prepared for college,** Whatcom High School, Bellingham, Wash.

**Preparatory school honors,** Track  
Baseball

**Other colleges attended,** University of Washington

**Honors there**

**Degrees taken and year**

**Department in this institution,** Metal Mining

**Class,** 1923

**Honors taken,** Sec. A. I. M. E. (1) (2)  
Track

**Member of clubs, fraternities, etc., with names of each and if a fraternity what is its character?**

A. I. M. E.

"M" Club

Mu Epsilon Tau (local)

## INDIVIDUAL RECORD

**Name,** Robert Westfield Litheredge

**College Address,** M. E. T. House, Golden, Colorado

**Home address,** 1310 S. Cherry St., Casper, Wyoming

**Name of father,** R. W. Litheredge, Sr. **Mother,** Clara Belle Thomas

**Where were you born?** Ogden, Utah. **When,** November 13, 1898

**Height,** 6 ft. 3 in. **Weight,** 200 lbs. **Complexion,** light

**Color of hair,** light brown. **Eyes,** brown

**Nationality, i. e. descent,** English-Welch-German

**Where prepared for college,** Salt Lake High School, Salt Lake, Utah; Loveland High School, Loveland, Colorado.

**Preparatory school honors,** Scholarship

**Other colleges attended**

**Honors there**

**Degrees taken and year**

**Department in this institution,** Metal Mining

**Class,** 1923

**Honors taken**

**Member of clubs, fraternities, etc., with names of each and if a fraternity what is its character?**

Senior Class Vice President  
Mu Epsilon Tau (local)

## INDIVIDUAL RECORD

**Name,** Robert Dewey Mueller

**College Address,** M. E. T. House, Golden, Colorado

**Home address,** 87 Clinton St., Salamanca, N. Y.

**Name of father,** M. Mueller. **Mother,** Minnie Germann

**Where were you born?** Salamanca, N. Y. **When,** January 1, 1899

**Height,** 5 ft. 8 in. **Weight,** 150 lbs. **Complexion,** dark

**Color of hair,** dark brown. **Eyes,** Gray

**Nationality, i. e. descent,** German-French

**Where prepared for college,** Salamanca High School

**Preparatory school honors,** Baseball (1), (2)  
Basketball (1)

**Other colleges attended**

**Honors there**

**Degrees taken and year**

**Department in this institution,** Mining Geology

**Class,** 1924

**Honors taken,** Baseball (1)  
Junior Prom Committee

**Member of clubs, fraternities, etc., with names of each and if a fraternity what is its character?**

“M” Club  
Mu Epsilon Tau (local)

## INDIVIDUAL RECORD

**Name,** Deane Lockwood Purves

**College Address,** M. E. T. House, Golden, Colorado

**Home address,** Williston, N. Dak.

**Name of father,** Thomas Leroy Purves. **Mother,** Florence Lockwood

**Where were you born?** Rio, Wisconsin. **When,** Nov. 25, 1903

**Height,** 6 ft. 1 in. **Weight,** 168 lbs. **Complexion,** light

**Color of hair,** light brown. **Eyes,** light brown

**Nationality, i. e. descent,** Scotch-Irish

**Where prepared for college,** Williston High School

**Preparatory school honors,** Class Salutatorian

**Other colleges attended**

**Honors there**

**Degrees taken and year**

**Department in this institution,** Metal Mining

**Class,** 1925

**Honors taken**

**Member of clubs, fraternities, etc., with names of each and if a fraternity what is its character?**

Mu Epsilon Tau (local)

## INDIVIDUAL RECORD

**Name,** Frank Sistermans, Jr.

**College Address,** M. E. T. House, Golden, Colorado

**Home address,** 1116 Aurora St., El Paso, Texas

**Name of father,** Frank H. Sistermans, Sr. **Mother,** Clotilde Horn

**Where were you born?** San Francisco, Cal. **When,** Nov. 18, 1897

**Height,** 5 ft. 9 in. **Weight,** 146 lbs. **Complexion,** dark

**Color of hair,** brown. **Eyes,** brown

**Nationality, i. e. descent,** Dutch

**Where prepared for college,** Austin High School

**Preparatory school honors,** Basketball  
Scholarship

**Other colleges attended,** Texas University, Kansas Agricultural College

**Honors there,**

**Degrees taken and years,**

**Department in this institution,** Metal Mining

**Class,** 1923

**Honors taken**

**Member of clubs, fraternities, etc., with names of each and if a fraternity what is its character?**

Mu Epsilon Tau (local)  
A. I. M. E.  
Texas Club

## INDIVIDUAL RECORD

**Name,** Vernon Bonnyfield Smith

**College Address,** M. E. T. House, Golden, Colorado

**Home address,** Morgantown, W. Va.

**Name of father,** John C. Smith. **Mother,** Alice Freed

**Where were you born?** Davis, W. Va. **When,** October 7, 1898

**Height,** 5 ft. 9½ in. **Weight,** 145 lbs. **Complexion,** dark

**Color of hair,** black. **Eyes,** brown

**Nationality, i. e. descent,** French-English

**Where prepared for college,** Randolph Macon Academy, Bedford City, Va.

**Preparatory school honors**

**Other colleges attended,** West Virginia University

**Honors there**

**Degrees taken and year**

**Department in this institution,** Metal Mining

**Class,** 1923

**Honors taken**

**Member of clubs, fraternities, etc., with names of each, and if a fraternity what is its character?**

A. I. M. E.

Mu Epsilon Tau (local)

## INDIVIDUAL RECORD

**Name,** Wilbur Edward Volk

**College Address,** M. E. T. House, Golden, Colorado

**Home address,** 573 S. Spring St., Bucyrus, Ohio

**Name of father,** Edward J. Volk. **Mother,** Cora Pfeiderer

**Where were you born?** Bucyrus, Ohio **When,** December 21, 1902

**Height** 5 ft. 11 in. **Weight** 146 lbs. **Complexion,** light

**Color of hair,** blonde. **Eyes,** blue

**Nationality, i. e. descent,** German

**Where prepared for college,** Bucyrus High School

**Preparatory school honors,** Dramatic Work

**Other colleges attended**

**Honors there**

**Degrees taken and year**

**Department in this institution,** Petroleum Engineering

**Class,** 1925

**Honors taken**

**Member of clubs, fraternities, etc., with names of each and if a fraternity, what is its character**

Ohio Club

A. I. M. E.

Mu Epsilon Tau (local)

# The Alumni of Mu Epsilon Tau

The Alumni members of the Fraternity have been assembled together in the form of a "Who's Who", giving the surname first and Christian and middle name, together with all information as to what he did in college, when he graduated, degrees, honors, and positions held since leaving College.



# The Alumni



## **WILTON TISDALE MILLAR**

MILLAR, Wilton Tisdale, was born of German parents January 2, 1897, at Tye River, Virginia. He attended high school at Front Royal, Virginia, where he won three letters in basketball and baseball. During 1917-19 he attended the Virginia Military Institute and was also a member of the National Guard at Plattsburg, New York. He entered Mines in the fall of 1919, and graduated January, 1922, with the degree of Engineer of Mines. During his stay at Mines he made a good record as a student and an athlete. After graduation he was employed for a time by the Ray Consolidated Copper Company, Ray, Arizona. At present he is employed in the copper mines at Bisbee, Arizona.



## **FREDERICK WHITE KIRBY**

KIRBY, Frederick White, was born of English parents, May 18, 1899, at Cedar Bluff, Virginia. From 1917-20 he attended Virginia Polytechnic Institute and entered Mines in the fall of 1920. Kirby holds the degree of Engineer of Mines which he received in May, 1921. He is a Junior Associate member of the American Institute of Mining and Metallurgical Engineers. At the present time he is employed by the United States Road Department at Cody, Wyoming.

### **LORENZ STAPLETON WOEBER**



WOEBER, Lorenz Stapleton, was born of German parents, April 11, 1900, at Denver, Colorado. He graduated with the degree, Engineer of Mines, in 1922, and was presented with the Wolff Medal at the graduation exercises. The Wolff Medal is given to the graduate who has maintained the highest class scholastic record during the entire four years. Woerber was on the Junior Prom. committee, assistant editor of the school newspaper, Student Council, (3), (4), Secretary Student Council (4), Glee Club, (3), (4), and commanding officer of the R. O. T. C. In addition he was a member of Tau Beta Pi (honorary engineering) fraternity and Sigma Gamma Epsilon (professional mining, metallurgical, and geological) fraternity. On Oct. 11, 1922, Lorenz was married to Miss Zelda Moynahan. At present he is employed as chief assayer by the United Comstock Mines Co., at Gold Hill, Nevada.

### **ROLAND THOMAS LITHEREDGE**



LITHEREDGE, Roland Thomas, was born at Salt Lake City, Utah, May 26, 1900, of German-English parents. He attended high school at Loveland, Colo., and graduated with high scholastic honors, and with letters in football and track. In 1922 he graduated from Mines with the degree of Engineer of Mines. While at Mines he was a member of the Football squad, (1), (2), (4), track team, (4), and a captain in the R. O. T. C. After graduation he was employed by the Sinclair Oil Company in Wyoming for a time but at present is at Ruth, Nevada, on the Engineering staff of the Ruth Consolidated Copper Company.

# Letters of Recommendation

Letters of Recommendation from the President of the School, the Dean, Department  
Heads, All National Fraternity Chapters in Golden and from  
the Pi Chapter of the Alpha Sigma Phi  
Fraternity are herein given

PI CHAPTER  
ALPHA SIGMA PHI FRATERNITY  
UNIVERSITY OF COLORADO

Boulder, Colo.

October 30, 1922

Mr. Edward J. Brook,  
Corresponding Secretary, Mu Epsilon Tau,  
Colorado School of Mines,  
Golden, Colo.

My Dear Mr. Brook:

In answer to your letter of October 21, 1922, I take pleasure in writing you that every member of Pi chapter of Alpha Sigma Phi is behind your move to petition our Fraternity for a charter.

And further, Pi chapter is glad to recommend to her sister chapters, every man now a member of Mu Epsilon Tau.

Pi chapter takes this action because of the fact that the fraternity situation at your school is such that a new chapter of any fraternity could immediately flourish and grow strong; and because of the high regard in which we hold all your members.

Sincerely yours,

(Signed) Zell F. Mabee  
Cor. Sec.  
Pi Chapter, Alpha Sigma Phi

COLORADO  
SCHOOL OF MINES  
GOLDEN, COLO.

Oct. 23, 1922

Mr. Chas. E. Hall, Executive Sec'y.  
Alpha Sigma Phi Fraternity,  
47 West 42nd St.,  
New York City, N. Y.

Dear Sir:

I understand that a group of our students are making application for a chapter in your fraternity. I trust that your fraternity may see its way clear to grant their request. The young men are strong, sturdy, full blooded Americans, and will be an honor to your fraternity. We now have chapters of Beta Theta Pi, Sigma Alpha Epsilon, Sigma Nu, and Kappa Sigma. There is not only no objection to the application here in the school, but a strong feeling in favor of it.

I have been a member of Delta Upsilon since 1884. I am a strong believer in our national fraternities, and aid them in every possible way. Should you desire further information, I shall be very glad to have you write to me again. I am sending a copy of our catalogue and our April Quarterly for your personal use.

Cordially yours,

(Signed) Victor C. Alderson  
President of the Colorado  
School of Mines

COLORADO  
SCHOOL OF MINES  
GOLDEN, COLO.

October 20, 1922

To Whom It May Concern:

This will certify that the local Mu Epsilon Tau fraternity includes in its membership some of the best men at the Colorado School of Mines; that the scholarship of this group of men is well above the average, and that they are on a par with other similar organizations in the matter of student activities. Without exception, the members have the confidence and respect of all who know them and I believe that as a chapter of a National fraternity, Mu Epsilon Tau would be a credit to the organization.

(Signed) Arlington P. Little  
Professor of Electrical Eng.

COLORADO  
SCHOOL OF MINES  
GOLDEN, COLO.

Mr. Vincent L. Denunzio,  
Mu Epsilon Tau Fraternity,  
Golden, Colo.

My Dear Mr. Denunzio:

In reply to your letter, it gives me pleasure to say that I am heartily in favor of the idea expressed therein, and I believe that your organization will be of greater strength and of more benefit to the School by becoming a chapter of a national fraternity.

As you state, the school has now grown to such a size that there is ample room for another organization of this kind, and its connection with a national fraternity should be a distinct advantage to the whole school as well as to your own members. I wish you success, and hope that your endeavors will result in our having here a strong chapter of a really strong, helpful, national fraternity.

Yours very truly,  
(Signed) Lester S. Grant  
Dean of the Faculty

COLORADO  
SCHOOL OF MINES  
GOLDEN, COLO.

Mr. V. L. Denunzio,

Golden, Colo.

Dear Mr. Denunzio:

I am heartily in favor of the establishment of a new national fraternity at the Colorado School of Mines. I think that the large increase in number of students is sufficient warrant for such a movement, and I trust that the local Mu Epsilon Tau fraternity may succeed in becoming a part of a national organization.

Sincerely yours,

(Signed) I. A. Palmer  
Professor of Metallurgy



COLORADO  
SCHOOL OF MINES  
GOLDEN, COLO.

Mr. Vincent L. Denunzio:  
Golden, Colo.

My Dear Mr. Denunzio:

I have heard with great pleasure that it is the intention of the Mu Epsilon Tau to petition a national fraternity in the near future. It is evident that the four fraternities at present in the school are not enough to provide for the needs of our present student body. Being affiliated with a national fraternity would be of great advantage to the present local organization and also add to the number of fraternities that carry the reputation of the Colorado School of Mines to other places. Wishing you all possible success, I am

Cordially yours,

(Signed) James Underhil  
Associate Professor of  
Mining

COLORADO  
SCHOOL OF MINES  
GOLDEN, COLO.

October 25, 1922

This is to certify that I am personally acquainted with the members of the Mu Epsilon Tau fraternity of the Colorado School of Mines and consider the young men above the average in scholarship and the general activities demanded by fraternal organizations.

(Signed) Wilfred W. Scott  
Assoc. Prof. of Chemistry

COLORADO  
SCHOOL OF MINES  
GOLDEN, COLO.

To Whom It May Concern:

Nearly all the members of the local fraternity, Mu Epsilon Tau, are well known to me personally. As a body of men they impress me as being of a superior type and I am sure the organization will compare favorably with that of any local chapter of a national organization.

Owing to the rapid increase in enrollment at the Colorado School of Mines I feel that there is a distinct need for the establishment of an additional national society chapter. I have no hesitation in recommending unqualifiedly that a charter be granted to Mu Epsilon Tau.

(Signed) F. M. Van Tuyl  
Professor of Geology

COLORADO  
SCHOOL OF MINES  
GOLDEN, COLO.

October 20, 1922

To Whom It May Concern:

For the past two years I have been in a position to watch, with interest the growth of the local fraternity, Mu Epsilon Tau.

Their members take an active interest in all phases of school activities and have a good scholastic standing.

I take pleasure in recommending this organization as worthy of a chapter in a national social fraternity.

Yours truly,

(Signed) James J. Lillie  
Beta Theta Pi  
Utah, 1916  
Asst. Professor of Geology

SIGMA ALPHA EPSILON  
COLORADO LAMBDA CHAPTER  
GOLDEN, COLO.

To Whom It May Concern:

It is with great pleasure that we are able to recommend the Mu Epsilon Tau Fraternity at the Colorado School of Mines.

We have known this group of men for the last two years and a half and have always found them to be very progressive and taking an active interest in the affairs of the school.

The men of this fraternity are held in high esteem by all with whom they come in contact. Their participation in the activities of the school has only been such as to add to their prestige and standing.

We consider the Mu Epsilon Tau fraternity a credit and an addition to any National Fraternity that they might see fit to petition.

Very sincerely yours,  
Colorado Lambda Chapter,  
Sigma Alpha Epsilon  
(Signed) E. R. Aaron  
Sec.

**BETA THETA PI  
BETA PHI CHAPTER  
GOLDEN, COLO.**

To Whom It May Concern:

Beta Phi Chapter of Beta Theta Pi heartily recommends Mu Epsilon Tau, a local fraternity in this school which is petitioning for a charter. During the two years of its existence the members of Mu Epsilon Tau have accomplished a great deal. They are a well balanced organization of scholars and athletes and take an active interest in the social life of the school. We think that they would be a worthy addition to any national fraternity.

Sincerely yours,

Beta Phi of Beta Theta Pi  
(Signed) K. P. Hurley,  
Sec.

SIGMA NU FRATERNITY  
GAMMA ETA CHAPTER  
GOLDEN, COLO.

Mu Epsilon Tau Fraternity,  
Golden, Colo.

Dear Sirs:

In reply to your letter of last month, Gamma Eta Chapter of Sigma Nu Fraternity thinks that you have a fine lot of men and are a credit to the school. The fact that the enrollment of the Colorado School of Mines, is now over five hundred, makes room for another fraternity of national standing, should any care to enter. Wishing you the best of success in your efforts to obtain a national charter, we beg to remain

Yours very truly,

Sigma Nu Fraternity  
(Signed) R. H. Clough  
Commander

## Conclusion