

Alpha Sigma Phi Fraternity
from
Torque Fraternity of Purdue University



Purdue University
West Lafayette, Indiana
March 6, 1924

Foreword

ooooo

To Alpha Sigma Phi Fraternity:

We, the members of Torque Fraternity, of Purdue University, believing that we have upheld those high ideals of brotherhood, characteristic of this fraternity and, believing, moreover, that our ideals in no way fall short of those maintained by your organization, do respectfully petition for a charter of Alpha Sigma Phi, to which we pledge our undivided loyalty, support and devotion.

PETITIONERS.

Purdue University

ONE who visits Purdue University for the first time will be agreeably surprised by the immediate impression of the beauty of its spacious campus with its substantial and imposing buildings scattered over the shaded lawn. A closer inspection reveals a surprising equipment of laboratories and every needed kind of apparatus for carrying out its extensive courses of study in technological and scientific lines. Then the visitor will see something of the student body of upwards of 3,000 men and women, and a faculty of 300 members; finally he will catch the spirit of the institution, the earnestness of students and teachers; the thoroughness of instruction; the close connection between study and practice, and gradually he will realize that here, through the co-operation of the federal and state governments, by the earnest devotion of the faculty and officers and the loyalty of the students, there is going on a work of preparing men and women to share in the responsibilities of the world's work, which is exceptional in many ways.

The details of the history and organization of the University are of little general interest, but a short review will give the important points of its founding. Purdue University was established in 1862 in accordance with federal legislation granting public lands to each state to establish colleges "where the leading object shall be, without excluding other scientific and classical studies and including military tactics, to teach such branches of learning as are related to agriculture and to the mechanic arts, in order to promote liberal and practical education of the industrial classes in the several pursuits and professions of life." The University was named by legislative act in honor of John Purdue who, before this act, had donated \$150,000 and one hundred acres of land appurtenant to the institution. Purdue is maintained by federal and state appropriations and student fees and has received, from time to time, substantial donations, in addition to that of John Purdue, from citizens of the county, from Amos Heavilon, Eliza Fowler, James Fowler, William C. Smith and others. The University is exclusively under State control.

To know that thousands of Purdue graduates are scattered over the wide world, taking responsible and successful part in every great activity where men of technical training are needed, and that every year the graduates are sought for in greater numbers than can be supplied for responsible positions in the line of their studies, is of interest to the public which is beginning to distinguish between superficial and efficient education. The departments of instruction are Agriculture, Applied Science, Mechanical Engineering, Civil Engineering, Electrical Engineering, Chemical Engineering, and Pharmacy, each comprising a four years course leading to the degree of Bachelor of Science.

A recent development is the department of Household Economics already overflowing with young women paralleling the efforts of their brothers in scientific preparation for their life work.

It would be a mistake, however, to infer that the curriculum is "practical" to the neglect of sound scientific study. The requirements for admission to the University are equal to or higher than the usual college standards and the class room requirements are the most exacting. In short, one soon realizes that Purdue University is a school of technology of first rank, favorably known far and wide for the quality of its educational and scientific work.

The thirty-four principal buildings of the University contain many unique features. The series of buildings for instruction in shop practice and drawing contain three acres of floor space and are equipped with every appliance for practical training in pattern making, forging, foundry and machine shop practice and mechanical drawing. Separate buildings for each of the engineering schools contain laboratories with complete equipment for practical work in surveying; steel masonry, and cement construction; steam and gas engine operation; the generation of electricity and transmission of electric power, telephone engineering, engineering design, etc. There is a locomotive laboratory, the first of its kind, for the study and operation of the steam locomotive, supplemented by a museum containing a unique collection of locomotives and railway appliances. There is an electric test car for actual road tests by students. The fundamental sciences of Chemistry, Physics and Biology are taught in their respective laboratory buildings of large capacity and superior equipment. Similarly, the School of Agriculture, with its fields, herds of thoroughbred types of live stock, and its laboratories of Dairying, Agronomy, Farm Machinery, and Horticulture, and the Experiment Station with its extensive laboratories and corps of experts devoted to agricultural investigation, demonstrates that farming is no whit behind other technical industries in its dependence upon scientific training.

Student life at Purdue has also its necessary element of play. The splendid Memorial Gymnasium and athletic field are quite as important and popular as the laboratories. With the Intra-Mural sports, Inter-Fraternity sports, and Inter-Ward sports of the unorganized men, every student has the opportunity to participate in some branch of athletics. The Military Corps and fine Cadet Band, and many other forms of student activities furnish every variety of recreation. The Purdue Union Memorial building now under construction, when finished will serve as a headquarters for the social activities of the students. When the new Athletic Bowl is finished, Purdue will be especially well equipped to care for the crowds backing all varsity athletics.

In addition to training men and women for the various walks of life, Purdue University maintains four distinct and separate branches that are of especial service to the public. These are the Agricultural Experiment Station, the Department of Agricultural Extension, the Engineering Experiment Station, and the Engineering Extension Service with its Personnel System.

The Agricultural Experiment Station is a scientific bureau and has an independent staff of scientific workers and separate funds. It has an extensive plant of offices and laboratories. The work of this bureau

is closely related to the school of Agriculture, and is of great interest and benefit to the farmers as well as to the instructional staff and students of that school.

The Department of Agricultural Extension was organized to extend the knowledge gained in the Experiment Station and to carry it to persons not attending Purdue. It is of great benefit to farmers throughout the State, and to others seeking elementary knowledge of agricultural practice and rural betterment. This work is carried on by speakers who tour the state and lecture on the various phases of agriculture.

The Engineering Experiment Station conducts researches in the fields of engineering and co-operates with the various Engineering Societies in its industrial investigations, and publishes and distributes the results in the form of bulletins. The Station is organized with a director, board of management, and working staff. There are available, for the important investigations, the extensive engineering laboratories of the University and the services of the engineering staff of specialists.

The Engineering Extension Service is organized for the purpose of carrying more effectively the work of the Engineering Departments and the Experiment Station to persons engaged in the industries of the State.

Purdue University is prominent in the athletics of the Western Conference, being a member of the Big Ten. The teams compete in football, basketball, baseball, track, cross country running, wrestling, swimming, water basketball, gymnastics, fencing, golf, and tennis. Purdue is noted for basketball championship teams and is well represented in all the other fields of athletics.

At various times during the year, "short courses" and conventions are held for the benefit of those who are unable to attend the regular session of the University. "Short courses" are held in the various phases of agriculture, and conventions are held for the various industrial organizations of the State. Each year a Road School is held under the direction of the Highway Department of the School of Civil Engineering, for the Highway Engineers of the State, and any others who may be interested. The annual meeting of the Indiana Public Utility Association is held at the University. Several other groups of industrial men hold their conventions here at intervals.

Purdue University is not without its share of the social life. There are thirty-three national and local fraternities and nine sororities located here.

Following is a list of the national fraternities and the date of their establishment at Purdue University: Sigma Chi, 1875; Kappa Sigma, 1885; Sigma Nu, 1891; Phi Delta Theta, 1893; Sigma Alpha Epsilon, 1893; Phi Kappa Psi, 1901; Phi Gamma Delta, 1902; Beta Theta Pi, 1903; Alpha Tau Omega, 1904; Theta

1904
1875
1885
1889
1892
1896
1898
1901
1904

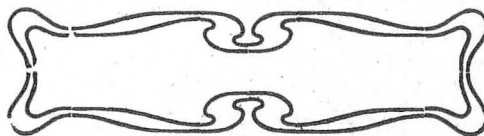
Xi, 1905; Phi Kappa Sigma, 1905; Sigma Phi Epsilon, 1905; Corda Fratres, 1907; Delta Tau Delta, 1907; Acacia, 1907; Triangle, 1909; Alpha Gamma Rho, 1911; Sigma Pi, 1912; Delta Upsilon, 1914; Lambda Chi Alpha, 1915; Phi Delta Chi, 1916; Phi Kappa, 1918; Theta Chi, 1920; Phi Kappa Tau, 1920; Pi Kappa Alpha, 1922; Kappa Delta Rho, 1921; Sigma Alpha Mu, 1922.

The following sororities have chapters at Purdue: Kappa Alpha Theta, 1915; Kappa Kappa Gamma, 1919; Chi Omega, 1919; Pi Beta Phi, 1921; Alpha Xi Delta, 1921; Zeta Tau Alpha, 1921.

The following honorary fraternities are represented on the Purdue Campus: Phi Lambda Upsilon, Tau Beta Pi, Pi Tau Sigma, Sigma Delta Chi, Tau Kappa Alpha, Scabbard and Blade, Kappa Delta Pi, Iron Key, Eta Kappa Nu, Theta Chi Gamma, Omicron Nu, Contour, Alpha Zeta, Ceres, and Hoof and Horn.

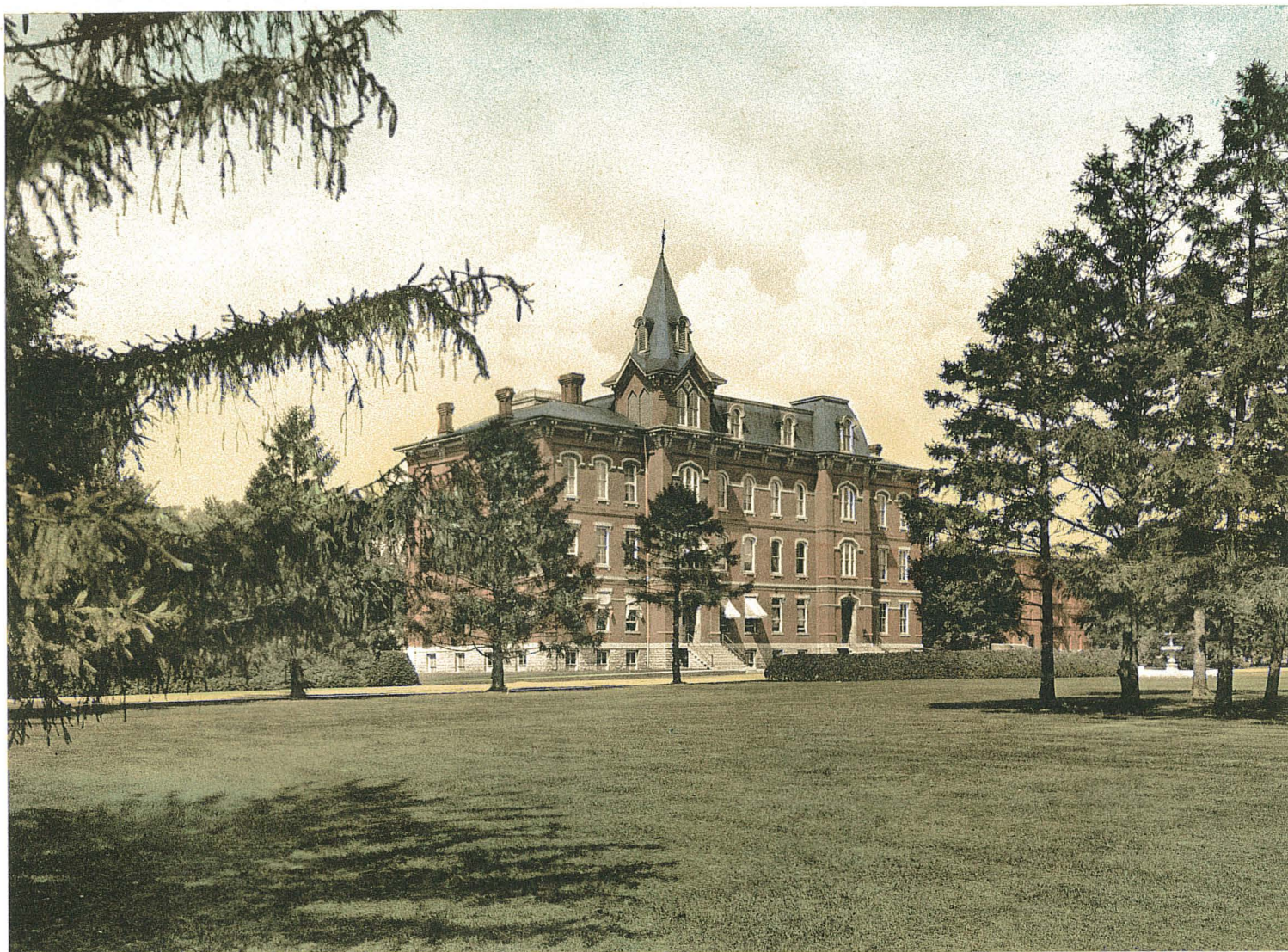
Purdue University is located in West LaFayette, Indiana, just across the Wabash River from LaFayette. It is near the Tippecanoe Battle Ground and Fort Ouiatenon. LaFayette and West LaFayette are connected by a street railway system and are in reality one city, although under two separate municipal governments. LaFayette is well equipped with theaters and places of amusement, which are available to the students whenever they have a little extra time.

LaFayette is one hundred and thirty-five miles from Chicago and seventy miles from Indianapolis. It may be reached by the Big Four Railroad, the Monon Railroad, the Nickle Plate Railroad, the Wabash Railroad, and traction lines. Also many good roads lead to LaFayette and make it easily accessible by motor cars. The city is wonderfully situated on the Wabash River and surrounded by hills that make the entire region a place of beauty, especially during the fall and snowy winter season.

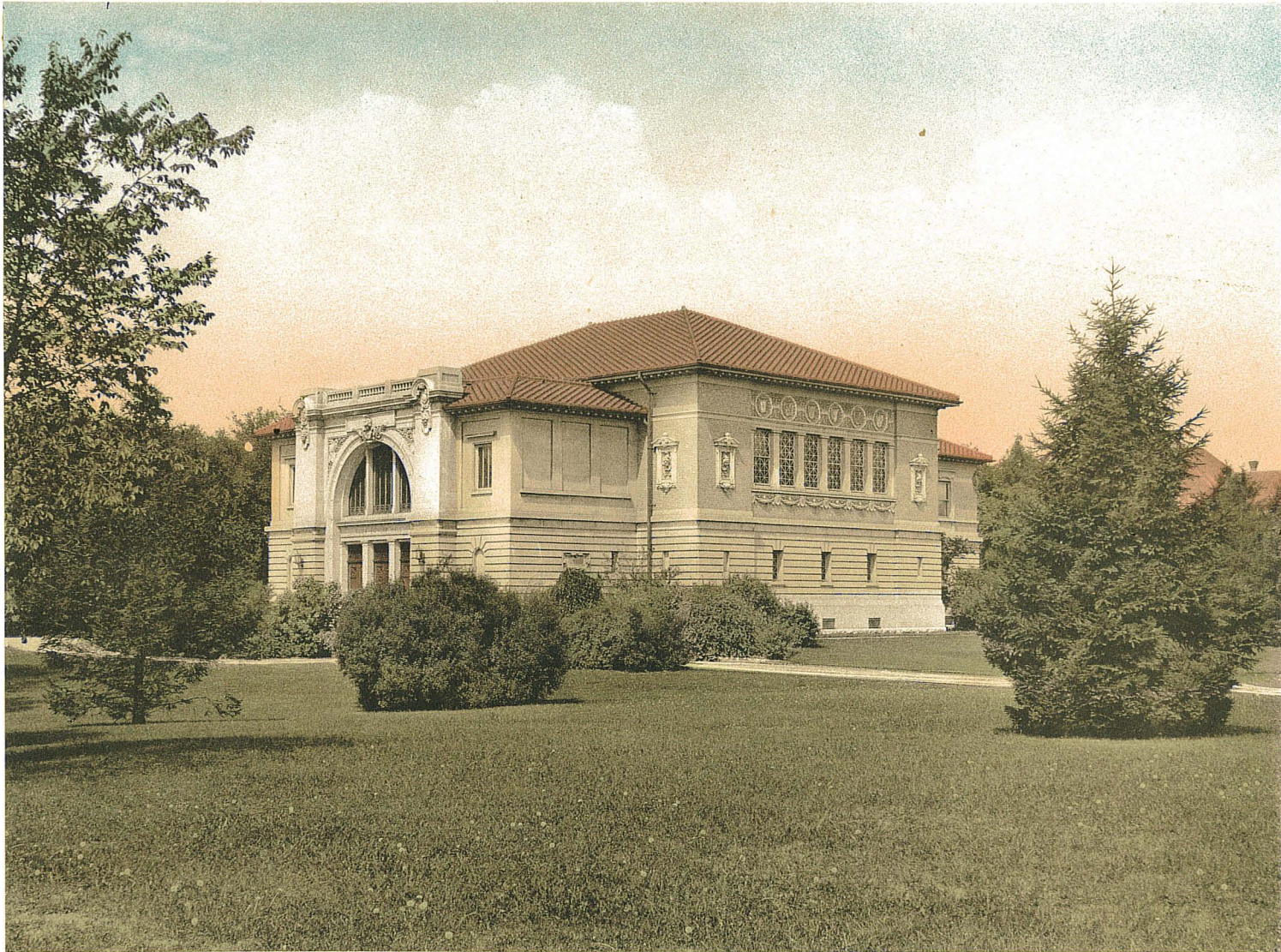




PURDUE GATES.



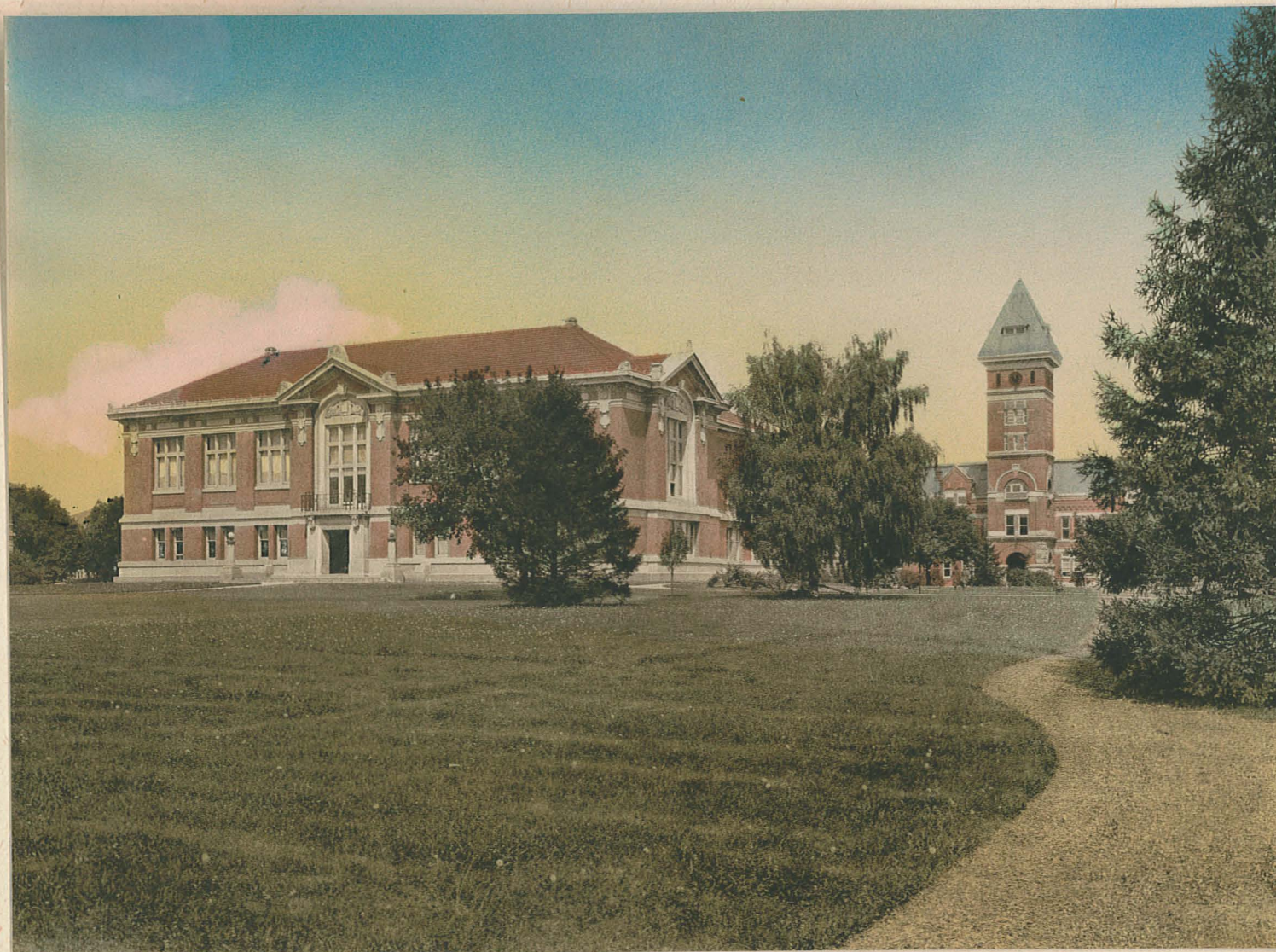
MAIN HALL.



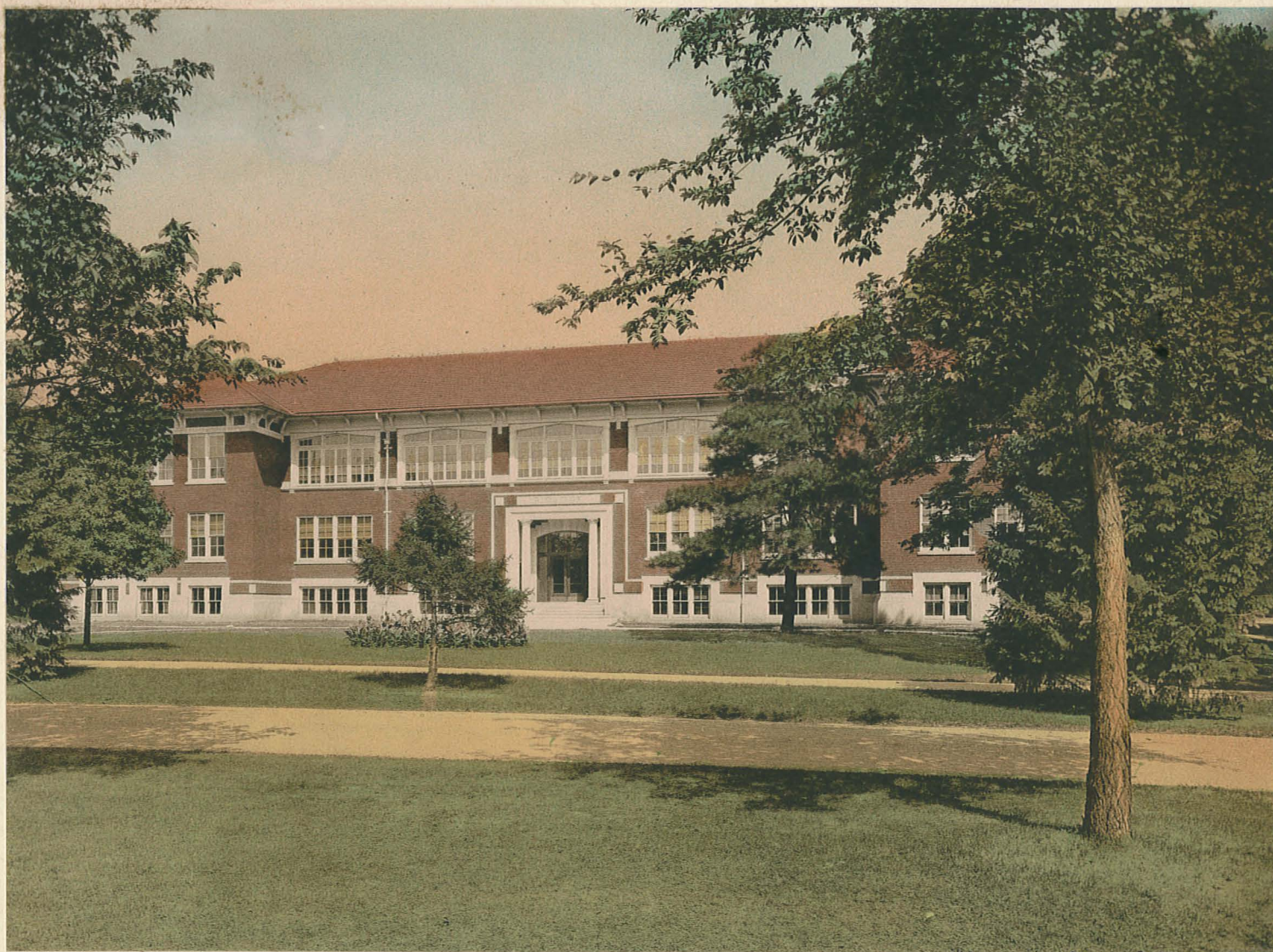
FOWLER HALL.



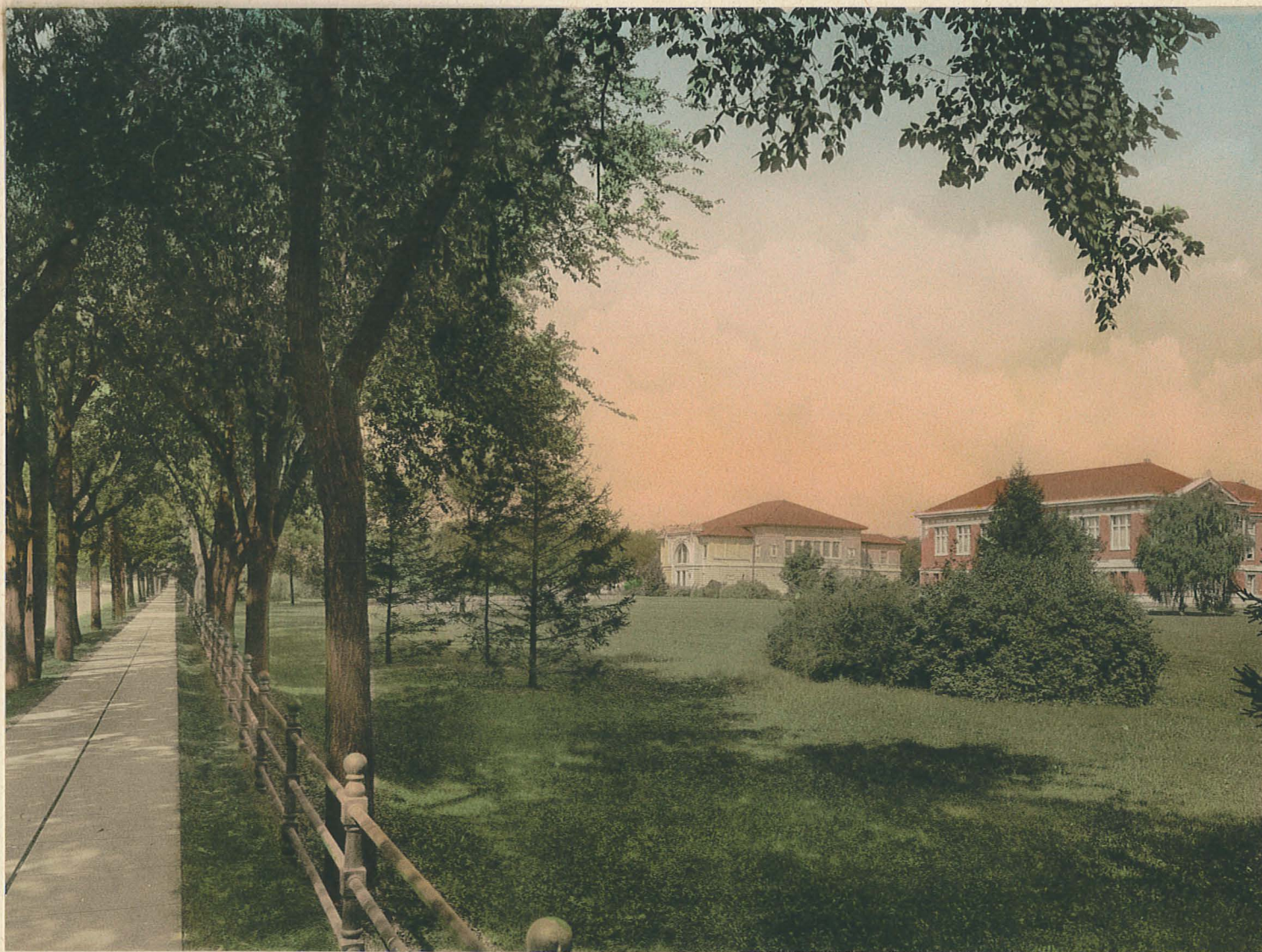
MECHANICAL ENGINEERING BUILDING.



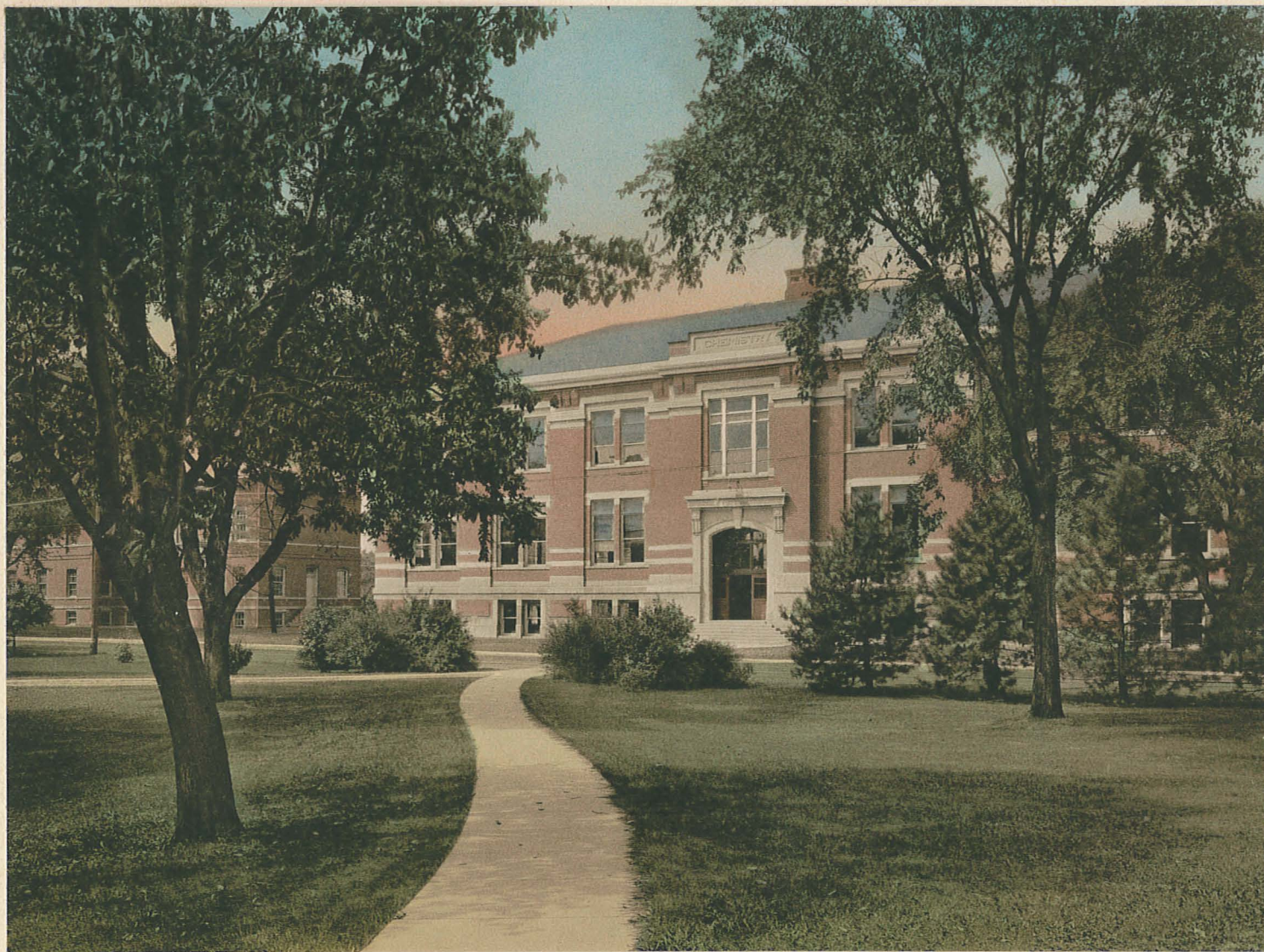
THE LIBRARY.



STANLEY COULTER HALL.



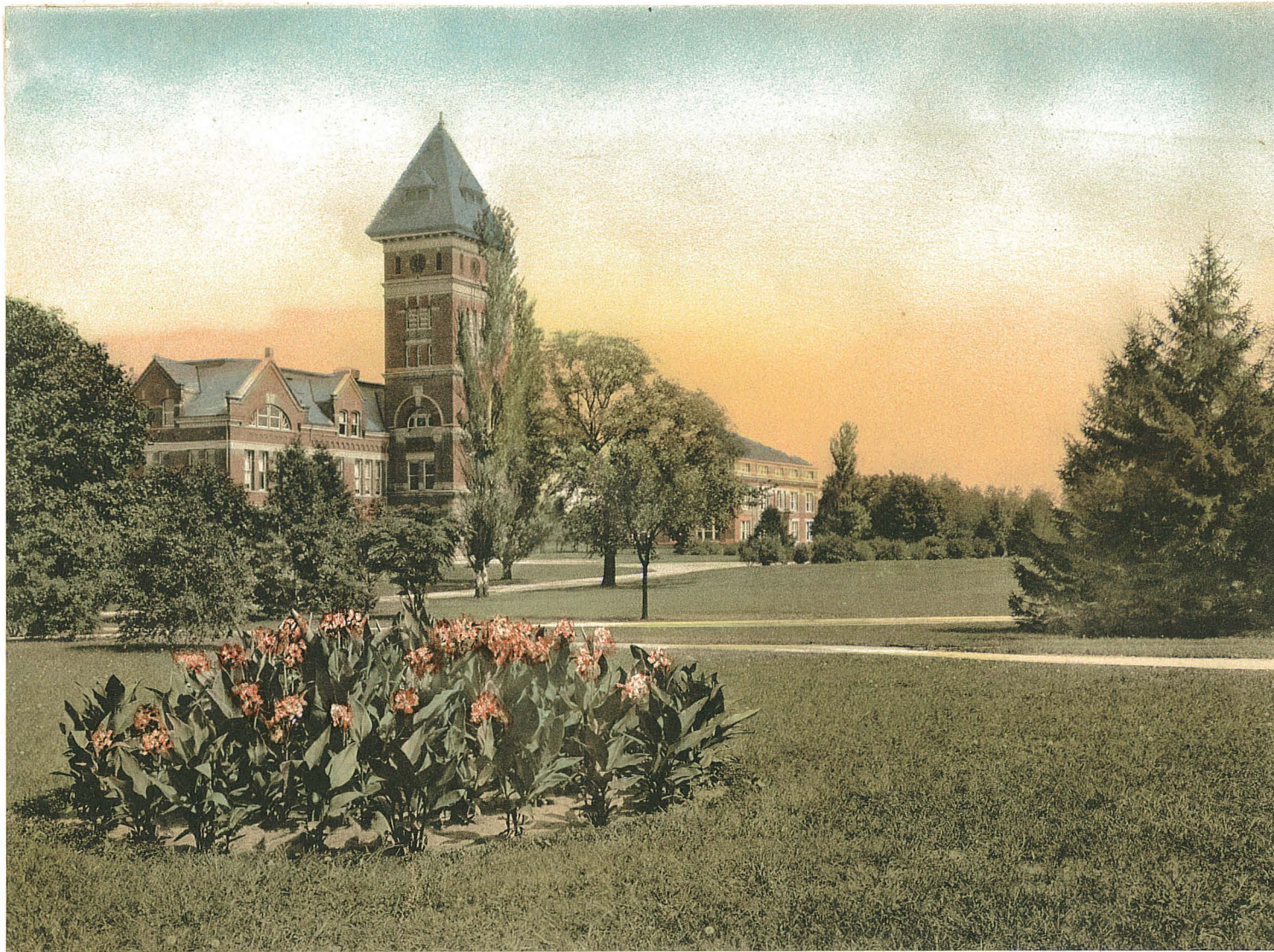
CAMPUS SCENE.



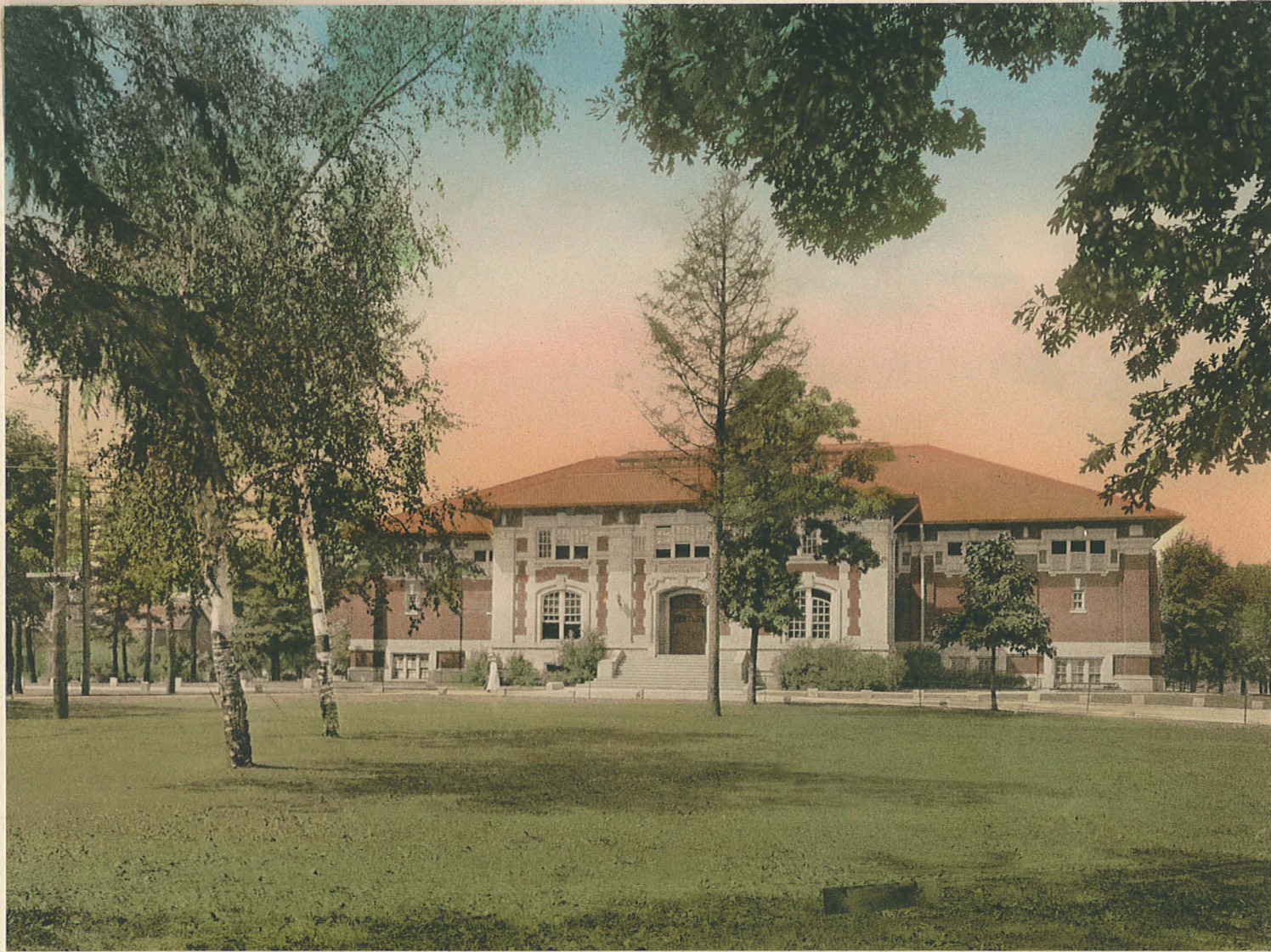
CHEMISTRY BUILDING.



PHARMACY BUILDING.



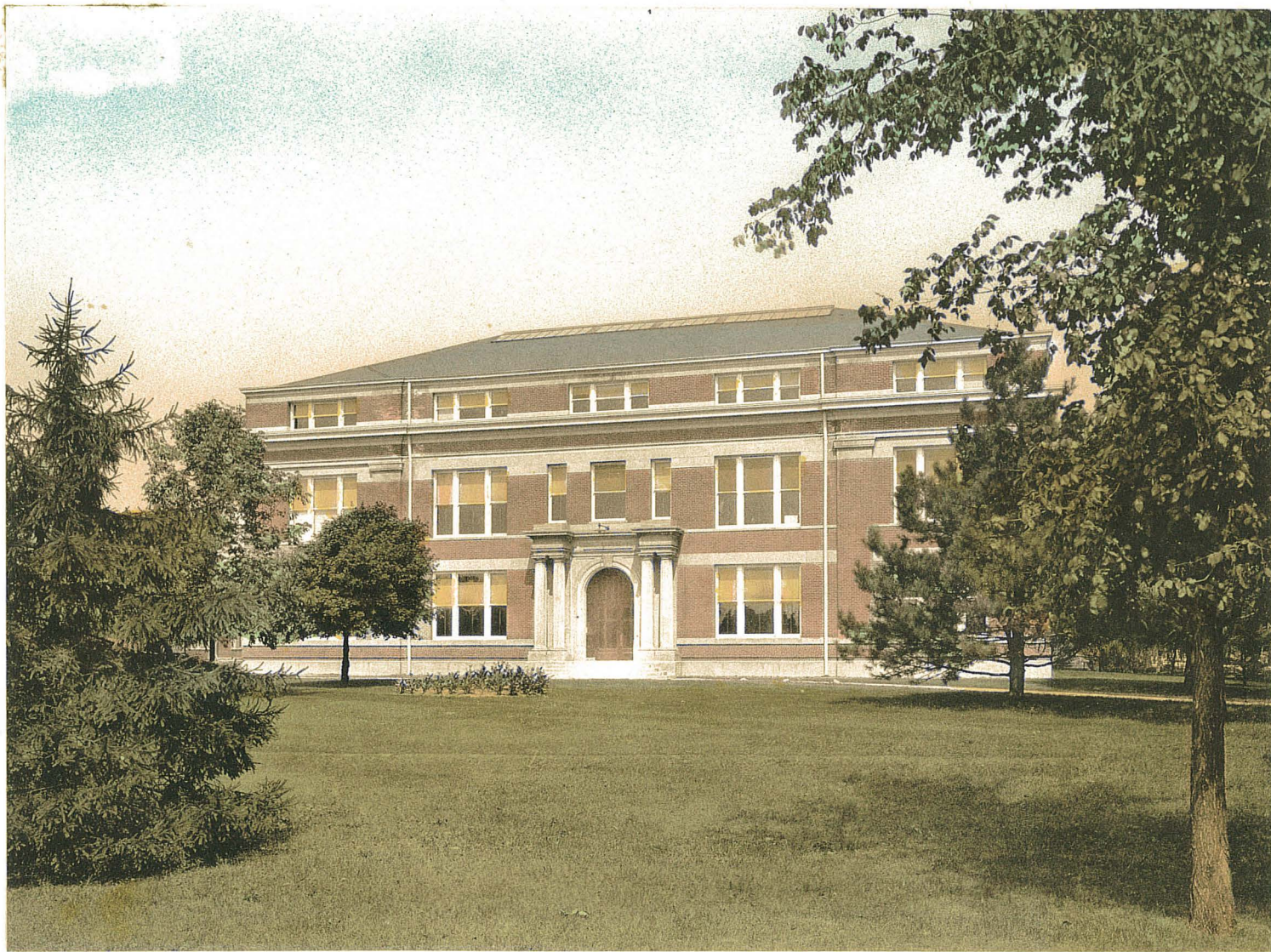
MECHANICAL AND CIVIL ENGINEERING BUILDINGS.



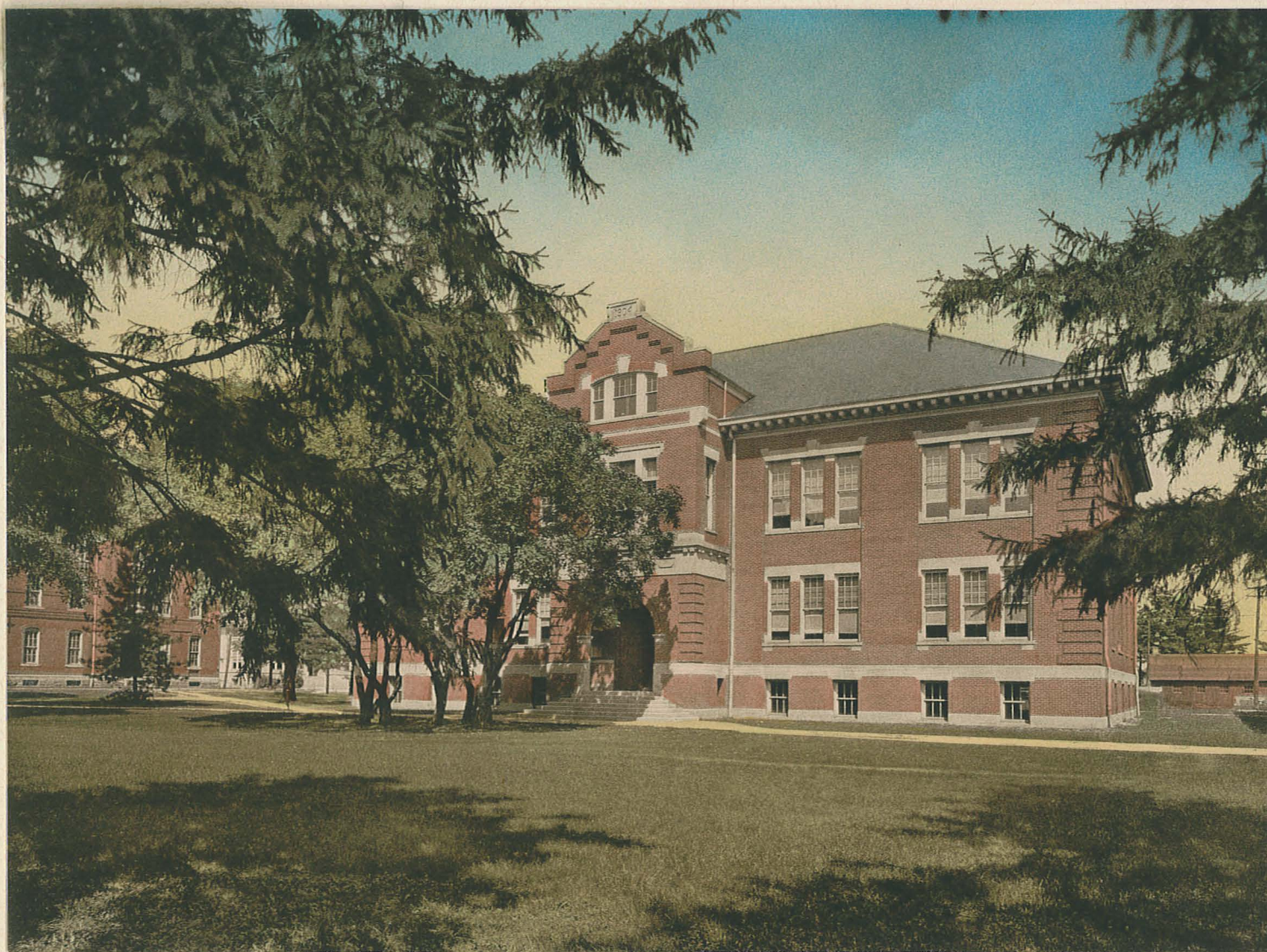
THE GYMNASIUM.



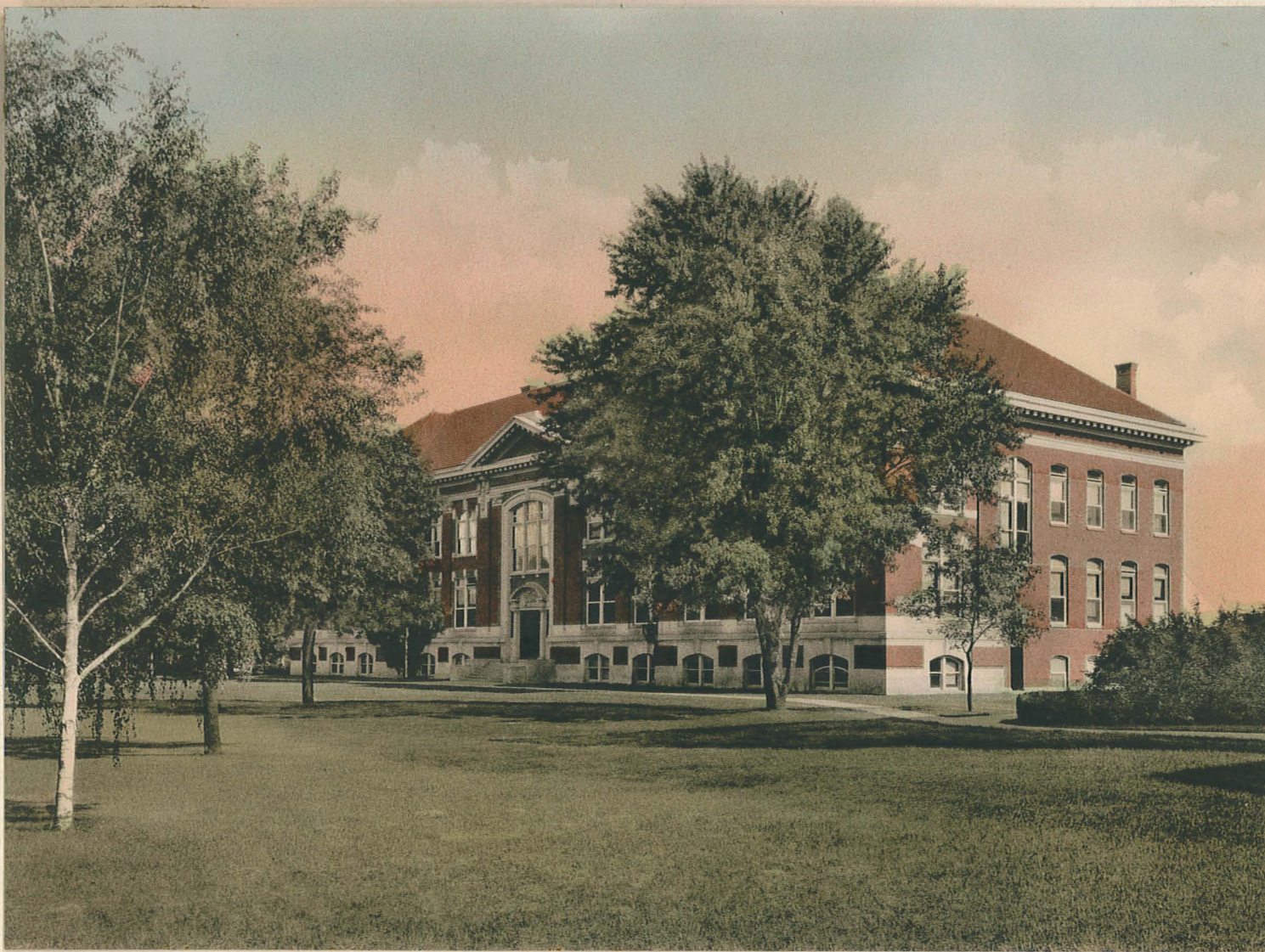
ELECTRICAL ENGINEERING BUILDING.



CIVIL ENGINEERING BUILDING.



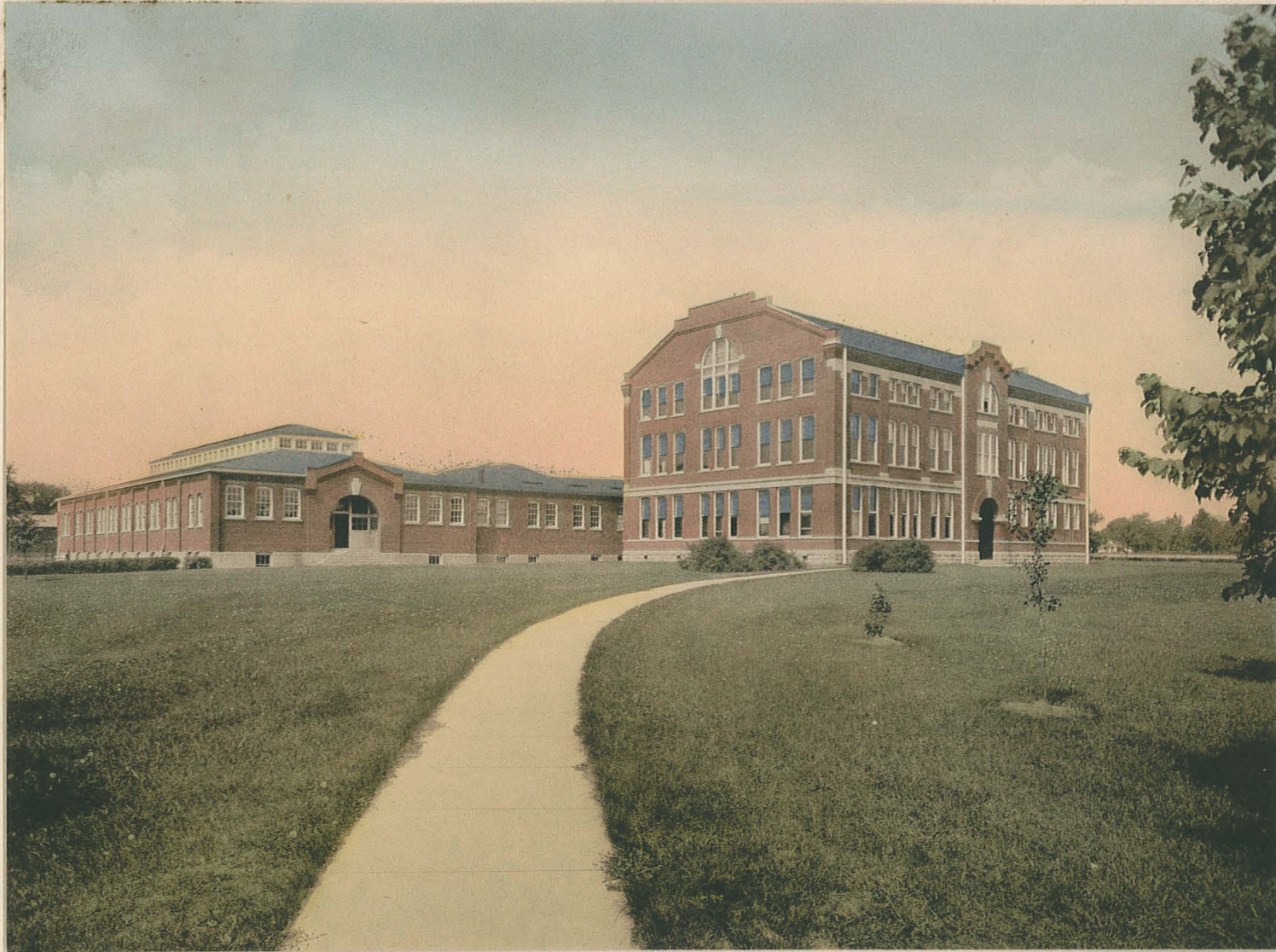
PHYSICS BUILDING.



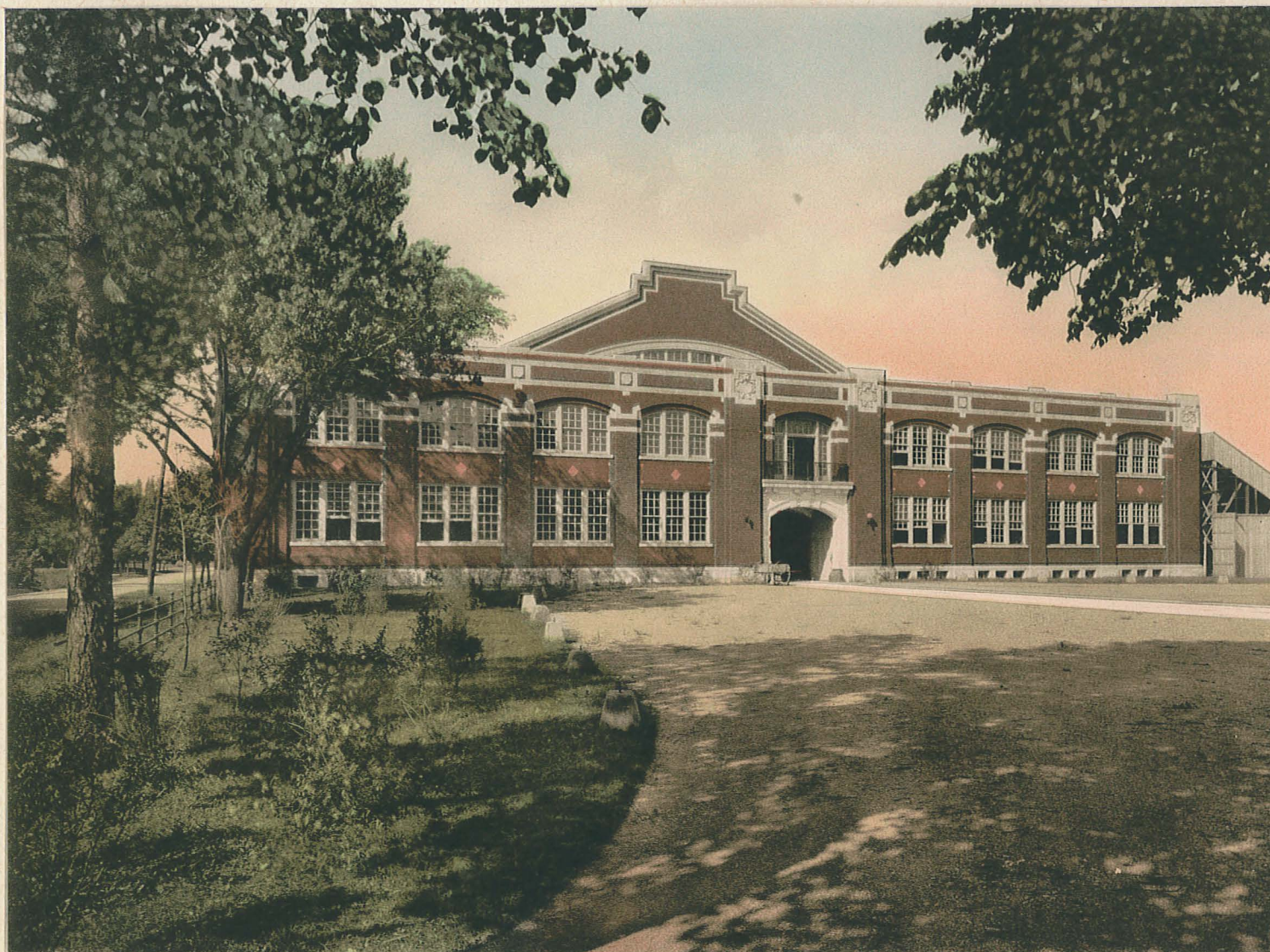
AGRICULTURAL EXPERIMENT STATION.



AGRICULTURE BUILDING.



MECHANICAL AND ENGINEERING SHOPS.



THE ARMORY.

Torque Fraternity of Purdue University








CHAPTER HOUSE

Torque Fraternity of Purdue University

ORGANIZATION

HE idea of organizing a local fraternity in order to bring about more intimate association, to promote good fellowship and to improve scholastic standing among Engineering students, as well as to institute lines of co-operation among the Schools of Engineering and the Engineering Profession in general, was first conceived by R. J. Rhinehart, E. E., '22, and Ivan V. Walter, E. E., '22, in the Spring of 1921. These two men communicated the idea to three of their friends, Richard Wahl, Abram Lorber and Rex L. Reynolds whom they then invited to join them as charter members. The five men then held a number of meetings in the conference room of the Purdue Library where they chose the name Torque, and formulated a constitution. This name and constitution when presented to the Purdue faculty committee on student organizations was accepted early in 1921, which established the Torque Fraternity. Also at this time a ritual was worked out under the guidance and advice of Captain F. W. Bryant.

When school was dismissed for the summer vacation, the present Chapter House had been leased and arrangements made for completely furnishing the house, as a home. Thus we were prepared to start the fall semester with new vigor and with determination to make our first year on the campus one of accomplishment.

Torque is one of the greatest forces known, and realizing its greatness it was chosen as the name of this organization. The elements of Torque in the human mind are those that make life worth living, "Service, Honor, and Success;" which compose our motto.

The membership of this fraternity is chosen from the Engineering students of the University, and from those who, having received a Bachelor of Science degree in Engineering, are instructors, or are actively engaged in the Engineering Profession. The candidates after having been approved by the Membership Committee, which investigates each candidate's character, and ascertains that the man under consideration is in good scholastic standing, must be unanimously accepted by vote of the members.

Members of the other regularly organized fraternities, with the exception of honorary fraternities, are not eligible for membership. Also no men shall be pledged until the first semester of their Freshman year in the University. The membership Committee, consisting of one man chosen from each of the three upper classes, Senior, Junior, and Sophomore, has full power to pass upon the eligibility of all prospective members. This committee has an outlined method of investigating the record of each man without his knowledge, by the co-operation of the faculty, and thus it is able to select men suitable for a progressive and fraternal organization of high standards.

The officers of this Fraternity are President, Vice-President, Secretary, Treasurer, Steward, House Manager, and a Membership Committee consisting of three men. These nine men form the executive committee that passes upon all business that arises between the regular meetings, and settles any question that cannot be settled in the meeting. These officers are elected at the first regular meeting in March, for one year, and take office on the first of April. These men must be Seniors or Juniors with the exception of the Sophomore on the membership committee. In the case of the non-fulfillment of duties, an officer may be impeached by a vote of two thirds of the members, and a new officer elected to fill his place.

Meetings other than the regular ones may be called by the President when necessary. Roberts' Rules of Order are observed at all meetings. With this arrangement, the governing body of the house has at all times been capable of handling any emergencies that have arisen. Also we have been able to show much initiative among the fraternities on the Campus, due to our executive body being exceptionally competent in handling affairs.

We are an Engineering fraternity. Engineering is one of the dominant factors of human activity. Its scope is large, and its demands are large, not only in the number of men, but also in the quality of the men in this field. With the realization of the greatness of this profession, we have considered the question as to how we may best equip ourselves for our chosen work. The prime requisite we believe is Character, and so we make this one of the things for which we stand. Realizing, further, that working alone is futile we make co-operation another point for which we stand. Lastly, we realize that we are helpless unless we are prepared to meet all difficulties, so we make Preparation our third point. Summing up, we stand for a clean character, hearty co-operation, and a mastering of the technique of the profession.

CHRONOLOGY

1920--1921

Torque Fraternity first became a factor in the activities of Purdue University during this year. Our charter members, R. J. Rhinehart, I. V. Walter, R. Wahl, and A. Lorber, all of the Electrical Engineering class of 1922, with Rex. L. Reynolds, of the Electrical Engineering class of 1923, were the men who originated the idea of this organization and had the initiative to make the first step toward making ideals realities. These men wrote the constitution of Torque, and drafted the Ritual. Then they, with the aid of Capt. F. W. Bryant, undertook the difficult task of making their dream of a leading fraternity come true.

Their first step was to select suitable men for the new organization, and, accordingly, seven men were chosen from the sophomore and freshman classes. These men were chosen because of their scholastic ability,

as shown from the University records, and because they had shown unusual characteristics of leadership. In June, these men were initiated into Torque Fraternity at the Lahr Hotel, and the initiation banquet was held afterward in the Lahr dining room.

Before leaving school for the summer, Torque leased the present Chapter-house, which lease continues until June, 1925, and contains a provision for optional renewal of lease should it be desired. Also arrangements were made to have the house fully furnished, ready for the men to occupy when the fall semester opened.

In this manner, Torque Fraternity became a reality, and the organization started gathering that momentum that has swept all obstacles aside, and today is pushing Torque up with and beyond some of the older leading fraternities of Purdue University.

1921-1922

This was to be our first year on the Campus, and, after registration, every member had the making of Torque foremost in mind, each one pledging himself to do his utmost for the betterment and advancement of Torque Fraternity. This, our year of introduction, was destined to be a great year for us.

As we were a young organization, we still had our policies to fix, and so we had to offer to men of ideas some things that the older fraternities did not. Accordingly, that fall, we were able to pledge and initiate a number of juniors who gave the fraternity stability, and a genuine push to the front. In all, during the year, Torque pledged and initiated seven juniors, five sophomores and five freshmen. We also initiated D. D. Ewing, E. E., M. E., Professor of Electric Railway Engineering, and E. F. Burton, B. S., M. E., Instructor of Refrigeration Engineering, as our Faculty Members and Advisors. The men, in the latter capacity, have been of invaluable service in keeping us always headed in the right direction to make progress.

When the University, at the end of the school year, sent out the comparative scholastic ratings of the fraternities, sororities, and unorganized students, the University at large saw that Torque was to be considered in the race for high honors scholastically. Our average was second highest, being above that of several honorary organizations and unorganized students. This showed us the result of hard, conscientious endeavor.

Torque came to be recognized also by the honors won by the individual members. Our Wm. E. Gray was awarded the Wilbur Scholarship that is annually given to the junior engineering student who has the highest grades for his first two years in the University. This award automatically made him President of Tau Beta Pi in his senior year. Also he is the only junior member of this honorary organization. P. S. Simmons, a member of the Campus Literary Society, was elected to Tau Kappa Alpha, an honor due to his being

a member of the Purdue Debating team. In the spring election, he was honored by Tau Beta Pi and Carzeuran. During the year he served also as President of the Human Engineering Society that received much publicity throughout the state. Rex. L. Reynolds, a member of the Campus Literary Society, was elected to Eta Kappa Nu in the fall, and Tau Beta Pi in the Spring. Q. M. Crater was initiated into the Jeffersonian Debating Society. W. M. Duncan was chosen as a member of the Gimlets, a group of seniors formed to promote athletics. A. Lorber was honored also because of the work he did in the design and construction of the Purdue High Tension Line as a part of his thesis. R. Wahl was made Master Musician of the Purdue Band, an honor given only to seniors of exceptional merit. The influence of Torque was beginning to be felt on the Campus.

During the year, we had men representing us in all branches of inter-fraternity sports and campus activities. Although we failed to become champions in any single branch of sport, we made a very fair showing. Our percentage in basketball and baseball were both about .500. Matters of more vital importance than these were pressing, and so we were not able to give sports the necessary support and attention. P. S. Simmons was a member of the Varsity Debating Team. Several men served on the Purdue Exponent Staff, Purdue Union, and Y. M. C. A.

In the spring we made our debut with a Spring Dinner Dance, which has since been made an annual affair. This was held in May, at Lincoln Lodge, to celebrate our birthday and was attended by all members and a number of guests. In this way, we gave our first social affair, and also started our annual custom.

The black spot on this shining year for Torque is the black of mourning due to the death of two of our beloved brothers, A. Lockard and P. S. Simmons. Mr. Lockard, a member of the Mechanical Engineering class of 1921, died in the early spring at his home in Linton, Indiana. "Shorty's" loss was keenly felt as he was such a cheerful fellow, a true friend and brother, and a wonderful entertainer on his banjo. Mr. Simmons, a man of unusual brilliance, died in Pittsburgh, Pennsylvania, in August. "Pete" was everyone's friend, and a born organizer and leader of men. The place he left in the organization was one that could not be readily filled. The loss of two such brothers caused each one of us much sorrow.

1922--1923

Upon our return to school in the fall, we felt that now we had a reputation to uphold, and that to aspire even higher was desirable. Although we felt the loss of Mr. Simmons' leadership, we rapidly became thoroughly organized and set out with a determination to better the record of our first year.

When selecting men for the organization, we used the same careful selection that characterizes our choosing, and at the close of the year we had pledged and initiated nine sophomores and five freshmen. These

men were chosen upon the basis of good character, high scholastic and athletic ability. By their showing while in Torque, we find that our estimation was not in fault. We also initiated A. N. Topping, B. S., Professor of Electrical Engineering, and H. L. Solberg, B. S., M. E., Instructor in Mechanical Engineering, as two additional faculty members and advisors. We think that we were fortunate to get two men of their caliber as they are proving themselves invaluable to a social fraternity of our standards.

Our rating scholastically this year was exceptionally good as we again took second place among the fraternities and sororities. Torque was also well represented by her members in the honorary organizations of the Campus. Mr. Wm. E. Grey served as President of Tau Beta Pi and was elected to Pi Tau Sigma during the year. Rex. L. Reynolds was elected Secretary of Eta Kappa Nu. H. O. Mathews, C. H. Osha, and J. L. Raynor were elected to Eta Kappa Nu. D. H. Dolman and R. F. Davis were elected to Kappa Phi Sigma, an honorary literary fraternity. Wm. E. Grey and Rex. L. Reynolds were elected to Sigma Xi upon graduation. This election is the highest honor given a graduating student here.

Mr. E. F. Burton, one of our faculty members, was given his degree of Mechanical Engineering in the spring. Mr. Burton, although a young man, gives promise of becoming an influential person, due to his work on refrigeration. Mr. H. L. Solberg received his M. S. in Mechanical Engineering during the year.

Torque was also represented in numerous University activities. B. R. Jackson served as Boxing Instructor for the University. C. H. Osha was a member of the Varsity Fencing Team, earning his letter in this sport. He was elected Captain of the team for the season of '23-'24 and President of the Fencers Association. H. O. Mathews was a member of the Varsity Football squad and earned his class numerals. G. L. Jackson was awarded his freshman numerals as a member of the Freshman Gym team. M. V. Keeler earned his class sweater in football as a member of the sophomore team. H. L. Solberg, W. A. Niles, and H. O. Meloy were members of the Purdue Band. H. O. Mathews was elected Vice-President of the Senior Electrical Engineers. W. H. Dietrich was a member of the Purdue Exponent Staff. Other of our men were prominent in the work in A. I. E. E., A. S. M. E., Y. M. C. A., and Purdue Memorial Union.

Our house athletics were much better than last year. In basketball we stood about .600 and in baseball .750. In the other inter-fraternity sports, we were represented but were not champions. As a whole, we had so many activities of importance on hands, that we could not give inter-fraternity athletics the attention necessary to become champions.

Socially, we again held to our rather conservative policy. We held a Christmas Frolic Dance at the Fowler Hotel ballroom. Several alumni, guests from other fraternities, and our members made up a festive crowd and a gay time was had by all. In the spring, we held our Spring Dance, a semi-formal, at Colonial

Hall. All the fraternities sent representatives, and about fifty-five couples were present. With dances of this type we have kept socially prominent, but have not, at any time, given the impression that we neglect our scholastic principles.

When time for summer vacation came, we members of Torque could look back over the year and say that we had made our organization bigger and better. Although the past was something to be proud of, we felt that the future would mean even better things. Accordingly, each man agreed to look up good men for Torque during the vacation.

1923--1924

The spirit of the returning members was such that seeming impossibilities soon came to look like probabilities. With renewed vigor and enthusiasm we set out to make this a record year in our existence. We pledged two juniors, one sophomore, and five freshmen and initiated the juniors and sophomore in November.

Our first achievement upon our return was the petitioning of and admittance to the Pan Hellenic Council. Now Torque is directly helping govern the whole fraternal group of the University.

In the fall election of the honorary fraternities, Torque was well represented. Of the six juniors elected to Phi Lambda Upsilon, Torque had three men, R. F. Davis, F. W. Scott, and R. F. Sheffer. D. J. Withers and M. V. Keeler were selected by Eta Kappa Nu. Also we had C. S. Hegel, N. F. Hindle, F. W. Scott, and R. E. Sheffer elected to Kappa Phi Sigma. In the spring, we should have still more men honored as we have a number eligible to senior honorary societies.

Our members are active in other University activities. C. H. Osha is a member and captain of the Varsity Fencing Team. G. L. Jackson is a member of the Varsity Gym Team. H. E. Gottberg and M. V. Keeler have been awarded numerals as members of the junior football team. H. Malone won his Freshman varsity numeral as a member of the Freshman Varsity Football squad. H. L. Solberg has been made Chief Musician of the Purdue Band. W. A. Niles and R. W. Carson are members of the Band. In the Purdue R. O. T. C., we have two captains and seven second lieutenants. This spring will also show Torque getting more honors in athletics.

Torque is starting a new era for itself in Inter-fraternity athletics. This fall we were eliminated in the indoor baseball tourney in the semi-finals. Our chances for winning the outdoor baseball championship this spring are very good. The basketball team is going strong. H. Wrasse will no doubt win the golf tourney this year. The future of our athletics looks exceedingly bright.

We have had two dances this past fall. The first was a Hard Times Dance, held at Lincoln Lodge. Several stunts were given and a fine time was enjoyed by all. A Christmas dance was held at Colonial Hall just before we left for the holidays. A number of guests attended as well as the members. This ended the social functions for the year 1923.

This year is yet young, and the opportunities to accomplish greater things for Torque are more than ever before. Realizing this, all members are striving to make this the greatest year of our existence.

CONCLUSION

In concluding this section, the reader should realize that at all times we have striven to uphold our constitution and the sacred relations of brotherhood. We have endeavored to help the University and surrounding community in every possible way. We have chosen our men for their good characters and ability as scholars and athletes. We encourage and demand good scholarship from the pledges and members. Torque is striving at all times to become representative of the ideals of Purdue University's Campus.





INFORMAL GROUP



Elbert Franklin Burton, B. S., M. E.
Instructor of Refrigeration Engineering.



Dressel Dewitt Ewing, E. E., M. E.
Professor of Electric Railway Engineering.



Alanson Niles Topping, B. S.
Professor of Electrical Engineering.



Harry Leland Solberg, B. S., M. E.
Instructor of Mechanical Engineering.



Earl Hart, B. S.
Home: Indianapolis, Indiana.
Born: September 17, 1898.
Mechanical Engineering '22.
Irving Literary Society.
Y. M. C. A. Entertainers.
Present Location: LaFayette, Indiana.



Arthur Lockard (Deceased)
Home: Linton, Indiana.
Mechanical Engineering '22.



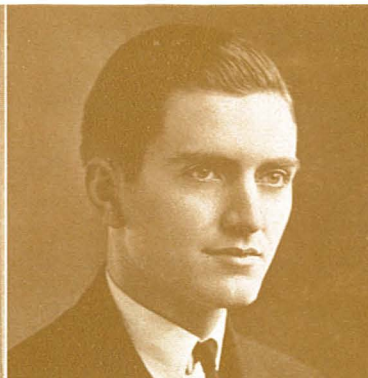
Robert Jarvis Rhinehart, B. S.
Home: Plymouth, Indiana.
Born: August 20, 1900.
Electrical Engineering '22.
Vice-President '21-22.
Present Location: Little Rock, Arkansas.



Abram Lorber, B. S.
Home: Indianapolis, Indiana.
Born: November 7, 1897.
Electrical Engineering '22.
Present Location: Milwaukee, Wisconsin.



Donald E. Wass, B. S.
Home: Owensboro, Kentucky.
Born: March 5, 1900.
Electrical Engineering '23.
Present Location: Plymouth, Indiana.



Frank Cecil Jones
Home: Seymour, Indiana.
Born: February 22, 1904.
School: Senior Electrical.
Secretary '22-23; Acting President '23-24.



Clarence Harold Osha
Home: Vincennes, Indiana.
Born: May 21, 1903.
School: Senior Electrical.
Eta Kappa Nu; Fencing Team 3, 4, Capt. 4; Captain, R. O. T. C.



Joseph Lindsley Raynor
Home: Woodward, Oklahoma.
Born: March 19, 1901.
School: Senior Electrical.
Eta Kappa Nu; Human Engineering Society; Pan-Hellenic Council '23-24.



Wilfrid Bruce Wilbur
Home: Ashley, Indiana.
Born: June 6, 1920.
School: Senior Mechanical.
Human Engineering Society.
President '23-'24.



David James Withers
Home: Princeton, Indiana.
Born: November 14, 1896.
School: Senior Electrical.
Eta Kappa Nu.



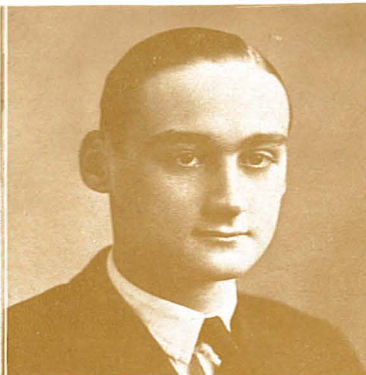
Donald Oliver Brooks
Home: South Bend, Ind.
Born: July 29, 1901.
School: Junior Electrical.
Second Lieutenant, R. O. T. C.; University Chess Champion.



Hilton Boyd Currans
Home: West LaFayette, Indiana.
Born: July 25, 1902.
School: Junior Chemical
Second Lieutenant, R. O. T. C.



Richard Franklin Davis
Home: Pleasant Mills, Indiana.
Born: October 24, 1901.
School: Junior Chemical.
Phi Lambda Upsilon; Kappa Phi Sigma.
Steward '23-24.



Donovan Herbert Dolman
Home: Laporte, Indiana.
Born: October 19, 1902.
School: Junior Electrical.
Kappa Phi Sigma; Manager of University Seven; Captain, R. O. T. C.



Harry Edmond Gottberg
Home: Seymour, Indiana.
Born: October 7, 1902.
School: Junior Mechanical.
Class Football 3.



Charles Schmalzried Hegel
Home: Lagro, Indiana.
Born: September 8, 1903.
School: Junior Chemical.
Kappa Phi Sigma.



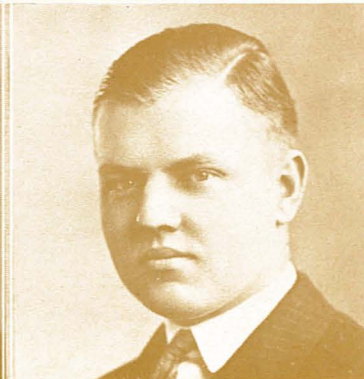
Norman Frederick Hindle
Home: Fort Wayne, Indiana.
Born: April 9, 1902.
School: Junior Chemical.
Kappa Phi Sigma; Second Lieutenant, R. O. T. C.; Engineering Review Staff.
Second Vice-President '23-24.



Frank Celvester Hosimer
Home: Culver, Indiana.
Born: June 28, 1901.
School: Junior Electrical.
Second Lieutenant, R. O. T. C.



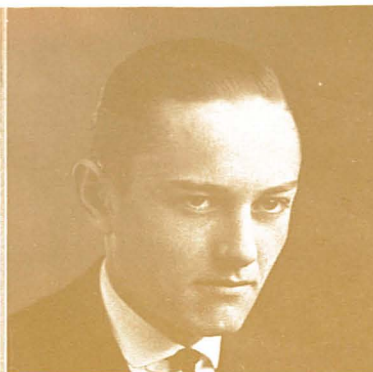
Mark Vincent Keeler
Home: Hammond, Indiana.
Born: April 11, 1902.
School: Junior Electrical.
Eta Kappa Nu; Class Football 1, 2, 3;
Second Lieutenant, R. O. T. C.;
Pan-Hellenic Council '23-24.



Edward Eikenberry Mills
Home: Richmond, Indiana.
Born: December 15, 1903.
School: Junior Civil.
Secretary '23-24.



Frank Walton Scott
 Home: Indianapolis, Indiana.
 Born: March 25, 1903.
 School: Junior Chemical.
 Phi Lambda Upsilon; Kappa Phi Sigma;
 Freshman Cross Country;
 Second Lieutenant, R. O. T. C.



Ralph Eby Sheffer
 Home: Richmond, Indiana.
 Born: June 22, 1904.
 School: Junior Chemical.
 Phi Lambda Upsilon; Kappa Phi Sigma.
 Treasurer '23-24.



Percy Walter Thompson
 Home: Hammond, Indiana.
 Born: November 8, 1908.
 School: Junior Chemical.
 Second Lieutenant, R. O. T. C.;
 Pistol Team.



William Summers Davis
 Home: South Bend, Indiana.
 Born: May 13, 1904.
 School: Sophomore Electrical.



Willis Lightle Hume
 Home: Indianapolis, Indiana.
 Born: December 14, 1901.
 School: Sophomore Civil.



George Lowell Jackson
 Home: Greensburg, Indiana.
 Born: November 17, 1904.
 School: Sophomore Civil.
 Freshman Gymnastic Team; Varsity 2.



Warren Arthur Niles
 Home: Mishawaka, Indiana.
 Born: June 18, 1904.
 School: Sophomore Civil.
 Concert Band.



Paul Selden Stephenson
 Home: Miami Beach, Florida.
 Born: May 17, 1904.
 School: Sophomore Electrical.
 Freshman Football; Freshman Baseball.



Ulysses Byron Yeager
Home: Pittsboro, Indiana.
Born: June 15, 1902.
School: Sophomore Chemical.



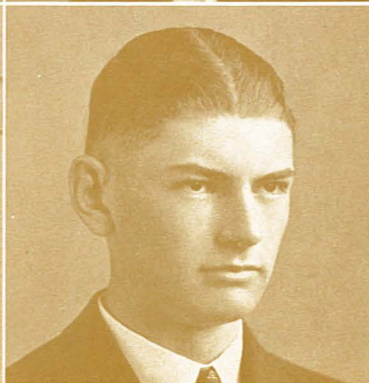
Robert William Carson
Home: Indianapolis, Indiana.
Born: October 27, 1903.
School: Freshman Mechanical.
Band.



Thomas Leo Fritzlen
Home: Indianapolis, Indiana.
Born: October 21, 1905.
School: Freshman Chemical.



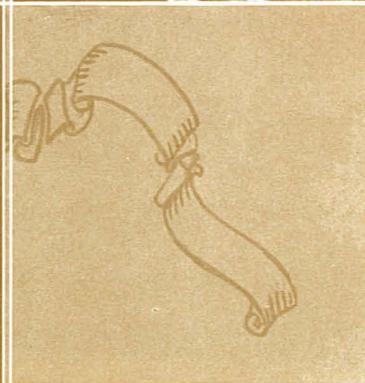
Harold Malone
Home: Richmond, Indiana.
Born: April 15, 1905.
School: Freshman Chemical.
Freshman Varsity Football; Freshman Wrestling Squad.



Leslie Ruel Russell
Home: Seymour, Indiana.
Born: July 25, 1906.
School: Freshman Electrical.



Harold Victor Wrasse
Home: Mishawaka, Indiana.
Born: April 18, 1905.
School: Freshman Electrical.



NON-GRADUATE MEMBERS

ooooo

Sidney Leroy Barber

Home: Chicago, Illinois.
Born: July 24, 1904
Ch. E., '25

Niel Dewey Carey

Home: Huntington, Indiana
Born: June 3, 1898
M. E., '24
Present location: Akron, Ohio

John Paul Charles

Home: Greenfield, Indiana.
Born: April 30, 1903
M. E., '25
Present location: Indianapolis, Indiana

Otis Gerald Cites

Home: Wanatah, Indiana
Born: September 29, 1901
M. E., '25
Present location: Detroit, Michigan.

Quincy M. Crater

Home: Franklin, Indiana
Born: September 18, 1902
M. E., '24
Irving Literary Society

Howard Henry Dietrich

Home: Richmond, Indiana
Born: January 30, 1904
E. E., '25
Present location: Dayton, Ohio
Varsity Swimming; Exponent Staff, '22.

Hugh Oldham Meloy

Home: Greenfield, Indiana
Born: November 17, 1903
Ch. E., '26
Present location: Indianapolis, Indiana
Insignia Board Freshman Class; Band.

Ozro Arlieth Williams

Home: Waldron, Indiana
Born: April 8, 1900
M. E., '23
Present location: Indianapolis, Indiana

SIGNATURES OF PETITIONERS

1. F. C. Jones
2. C. H. Osha
3. J. L. Raynor
4. W. Bruce Wilbur
5. D. J. Withers
6. D. O. Brooks
7. M. B. Currens
8. R. F. Davis
9. D. H. Doherty
10. H. E. Gotting
11. C. L. Hepler
12. W. F. Huddle
13. F. C. Hosmer
14. M. Keeler
15. E. E. Miller

16. J. W. Scott
17. R. E. Sheffer
18. J. W. Thompson
19. W. J. Davis
20. H. L. Hume
21. H. L. Jackson
22. W. A. Viles
23. P. J. Stephenson
24. W. B. Yeager
25. R. W. Carson
26. J. L. Fritzen
27. H. Malone
28. L. R. Russell
29. H. V. Hrusse
30.

Recommendations

PURDUE UNIVERSITY
LAFAYETTE, INDIANA
PRESIDENT'S OFFICE

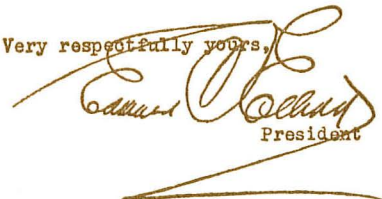
January 18, 1924

To Whom It May Concern:

It is a pleasure to recommend
the Torque Fraternity as a body of young men
not only of good character and fine scholarship
but of a keen interest in the affairs of the
student body.

I can heartily endorse the
petition of the Torque Fraternity for nationalization
with the Alpha Sigma Phi National Fraternity.

Very respectfully yours,


President

PURDUE UNIVERSITY
LAFAYETTE, INDIANA
SCHOOL OF SCIENCE
OFFICE OF THE DEAN

January 15, 1924

The Torque is a local organization of
students of Purdue University. It was
established in 1920 or 1921 and has maintained
itself since that time in competition with the
National Greek letter organizations.

It has at present twenty-five or thirty
members fairly well distributed between the
university classes. In point of scholarship
it ranks very much higher than any of the
National organizations.

The members of the organization are of
good character, are good mixers and are altogether
of the sort that we are apt to call fraternity
material. I should say in a general way that any
one of the members of Torque would have been taken
into some one of our fraternities had it not been
for connection with this Club.

Your organization could not find a better
group of men for the establishment of a chapter
at Purdue University than these who are presenting
their petition to you.


Dean of men

PURDUE UNIVERSITY

LAFAYETTE, INDIANA

OFFICE OF THE DEAN OF ENGINEERING

January 9, 1924.

TO WHOM IT MAY CONCERN:

The Torque Fraternity of Purdue University was organized several years ago in order to give a group of our students an opportunity for social contact.

In general, the members of the Torque Fraternity have been interested in high scholarship attainments. An examination of our records shows that nine members of the Torque Fraternity rank at present very high among our engineering students. This means that they have average grades of 85% or higher.

I am of the opinion that the Torque Fraternity merits favorable consideration for admittance to the National Fraternity.

AAP TM

A. A. Potter

A. A. Potter
Dean of Engineering.

PURDUE UNIVERSITY

LAFAYETTE, INDIANA

SCHOOL OF CHEMICAL ENGINEERING

January 28, 1924.

To Whom It May Concern :

I have known the " Torque ", a local fraternity at this institution, since its founding here.

It is made up of high grade, earnest young men and has a good reputation as to scholarship and the standards of conduct which it exhibits in its membership.

I am therefore glad to recommend the organization.

H. C. Kupper

Head, School of Chemical Engineering.

PURDUE UNIVERSITY
LAFAYETTE, INDIANA
SCHOOL OF MECHANICAL ENGINEERING

January 29, 1924.

TO WHOM IT MAY CONCERN:

It has been my pleasure to have known the personnel of the organization at Purdue University known as the "Torque" since its organization.

This club has been very fortunate, as well as wise, in the selection of its men for its membership. They have stood for the fine things and worthwhile things in the University and have stood in a body back of every movement which was for the betterment of the University.

I am personally acquainted with the faculty advisors of the organization and feel that the high standing which the Torque has always enjoyed in the University is perhaps largely due to their excellent advice and council. I am sure that your earnest consideration of their application for membership in a National organization will reflect ultimately to your own credit.

Yours respectfully,


G. A. Young,
Head, School of Mechanical Engineering.

GAY HO

PURDUE UNIVERSITY
LAFAYETTE, INDIANA
SCHOOL OF ELECTRICAL ENGINEERING

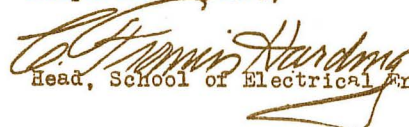
January 19, 1924.

To Whom it May Concern:-

Subject: Recommendation of Torque for
Affiliation with National Fraternity.

As result of personal acquaintance with a large number of the students who are members of the Torque Fraternity of Purdue University and after a study of their scholastic standing and personnel records, the writer is very glad to recommend this organization for such prospective affiliation with any strong national fraternity which it may feel justified in considering seriously.

Respectfully yours,


Head, School of Electrical Engrg.

KAPPA SIGMA HOUSE
WEST LAFAYETTE, INDIANA

Dec. 6, 1923.

To Whom It May Concern:

This is to testify that the Torque Fraternity, in our opinion, is the leading local on the campus, being high in scholarship and surpassing by far, most of the smaller Greeks here in school. They are well represented in all branches of University activities.

Yours truly,

Arthur J. Miller

Pres.



January 9, 1924.

To whom it may concern:

Beta Mu of Beta Theta Pi wishes to indorse the effort of Torque fraternity to become a chapter of a national fraternity and recommends favorable consideration of this now firmly established local by any organization they care to petition.

Very truly yours,

Beta Mu of Beta Theta Pi

By *H. P. Durbin*
President

Purdue Chapter Delta Upsilon
West Lafayette, Indiana

December 16, 1923.

Alpha Sigma Phi Fraternity,

Gentlemen:

The Purdue Chapter of Delta Upsilon gladly recommends the Torque Local Fraternity as a prospective chapter for Alpha Sigma Phi. They have made an excellent showing in scholarship and take an active part on the campus as well.

Very truly yours,

W. P. Kinneman

Pres.

Per R.H.M.

TRIANGLE FRATERNITY
PURDUE UNIVERSITY
WEST LAFAYETTE, IND.

January 5, 1924.

Representing Purdue active chapter of Triangle I wish to state that we consider Torque Fraternity to be one of the leading local fraternities on the campus. Their ranking in a scholastic way is above the average, in athletic ability they rank fair, and they are represented in campus activities. They are a coming organization.


President.

BETA ZETA CHAPTER
SIGMA NU FRATERNITY
PURDUE UNIVERSITY
WEST LAFAYETTE, IND.

January 10, 1924

To whom it may concern:--

This is to certify that the Torque Fraternity of Purdue University is one of the oldest and most prominent Local Fraternities on the campus. It is a member of the Pan Hellenic Council and is active in all of the fraternity affairs of the university.

The chapter is composed of a group of fine fellows and we gladly recommend them to any fraternity whom they may petition.

Yours Truly
L. W. McKinley
Commander of Sigma Nu Fraternity



FRATERNITY OF PHI GAMMA DELTA

LAMBDA IOTA CHAPTER
1114 STATE STREET
LA FAYETTE, INDIANA

Jan. 14, 1924.

To Whom It May Concern:

Phi Gamma Delta wishes to endorse the petition of the Torque Fraternity of Purdue University to Alpha Sigma Phi Fraternity. Knowing the individual members and the record of this organization at Purdue University, the members of Phi Gamma Delta unanimously recommend them as deserving of chapter affiliation.

Yours very truly,

Phi Gamma Delta,

by *J. E. Bixler*
J. E. Bixler.

Alpha Delta Chapter
Theta Chi Fraternity
Lafayette, Ind.

January 14, 1924.

The National Alpha Sigma Phi Fraternity.

Gentlemen:

We are informed that the local Torque Fraternity is petitioning your organization for a charter, and in this connection wish to advise as follows.

The Torque Fraternity is undoubtedly the strongest local on the campus at the present time. The men of this organization with whom we are acquainted are good men and of fraternity calibre. We believe they are ready for a national charter, and should be pleased to see their petition granted.

Yours very truly,

Luther A. Davis

President,

E. C. Stange
Secretary,

PURDUE CHAPTER
Acacia Fraternity

427 STATE STREET
WEST LAFAYETTE, INDIANA

Alpha Sigma Phi Fraternity,

Gentlemen:

We understand that the local Torque Club is petitioning your Fraternity for a chapter at Purdue University. Their membership is composed of men of excellent standards who are recognized and well liked by the campus as a whole as well as this chapter. The Purdue Chapter of the Acacia Fraternity, knowing personally the majority of the members of this group, wishes to take this opportunity to heartily recommend that you grant them a charter.

Very truly yours

The Purdue Chapter of Acacia

By *D. B. Thomas*

GAMMA LAMBDA CHAPTER
DELTA TAU DELTA FRATERNITY
PURDUE UNIVERSITY
WEST LAFAYETTE, IND.

December 19, 1923.

To the Arch Chapter of Alpha Sigma Phi.

Gentlemen: I am glad to recommend to you for a charter the group of students of this university who are applying for that privilege. I speak the sentiment of our Chapter when I say that this would be desirable from the stand point of both the Delta Tau Delta Fraternity and the other fraternities in our school. We feel no doubt but that their record since they were organized will stand investigation and that they are worthy of your consideration.

Very respectfully,

J. W. Salmon
Secretary of Gamma Lambda of Delta Tau Delta

Phi Kappa Psi House
149 Andrews Place
West Lafayette, Indiana

Jan. 15, 1924.

To Whom it may concern,

Indiana Delta of Phi Kappa Psi wishes to recommend for a charter the Torque Fraternity.

They have a mighty fine group of men, high in scholarship and above the average in their strength in campus activities.

We believe that a charter placed here would bring nothing but honor to any national organization.

N. W. Hunter, Sec.



SIGMA ALPHA EPSILON UNIVERSITY

INDIANA BETA CHAPTER
PURDUE UNIVERSITY
WEST LAFAYETTE, INDIANA

Jan. 5, 1923.

To Whom It May Concern:

Hearing that the Torque Fraternity of Purdue University is petitioning a National Greek Letter Fraternity, we are strong in our hearty recommendation of this body of men.

Though not a Greek Organization they have attained membership in the Pan Hellenic Council, which shows their standing among Fraternities on the Purdue Campus.

They are well represented in student activities and their scholarship is high, as the fact that they have men in Phi Lambda Upsilon, Tau Beta Pi, etc., gives evidence.

Indiana Beta of Sigma Alpha Epsilon.

P. O. Wood
C. C.

J. H. FOWLER, CHAIRMAN OF THE BOARD
C. G. FOWLER, PRESIDENT
J. B. GOWDER, VICE PRESIDENT

NO 5889.
CAPITAL \$100,000.
SURPLUS & PROFITS \$175,000.

B. BROCKENBROUGH, CASHIER
B. D. RESE, ASST. CASHIER
J. H. KENSINGER, ASST. CASHIER



LAFAYETTE, IND. January 11, 1924.

TO WHOM IT MAY CONCERN:

The Torque Fraternity has had an account at this Bank since September, 1921. They have always kept a satisfactory balance and have taken care of this account in a business like manner and we feel that their finances are being handled very capably.

Yours very truly,

NATIONAL FOWLER BANK

J. H. KENSINGER
BY
Asst. Cashier.

OFFICERS

C. B. JAMISON, PRESIDENT
S. C. JACKSON, VICE-PRES. AND TREAS.
FLOYD GRANNON, SEC. AND GEN. MGR.

JAMISON BROTHERS CO.

INCORPORATED
HARDWARE - IMPLEMENTS
FURNITURE

LAFAYETTE, INDIANA

Jan. 12, 1924:

DIRECTORS

C. B. JAMISON
S. C. JACKSON
FLOYD GRANNON
A. F. JAMISON
C. F. JAMISON

To Whom It May Concern:-

We are glad to recommend the Members of the Torque Fraternity as honest, upright and commendable young men. Having had business dealings with them since the opening of the organization, we are in position to say they have been prompt and accurate in taking care of all obligations.

We are confident any organization would be fortunate in selecting men of their high standing.

Sincerely yours,

Jamison Bros. Co.

Per *Floyd Grannon*
Sec. and Gen Mgr.

The following Nationalization Committee composed and had published this Petition.

N. F. Hindle

W. L. Hume

G. L. Jackson

F. W. Scott

R. E. Sheffer